

Report No. MDS/PDG-77-1
Revision 4
January 26, 1981

Remove these pages:

Cover Sheet
Figure 6-6 (1 of 5)
Figure 6-6 (2 of 5)
Figure 6-6 (3 of 5)
Figure 6-6 (4 of 5)
Figure 6-6 (5 of 5)

Insert these pages:

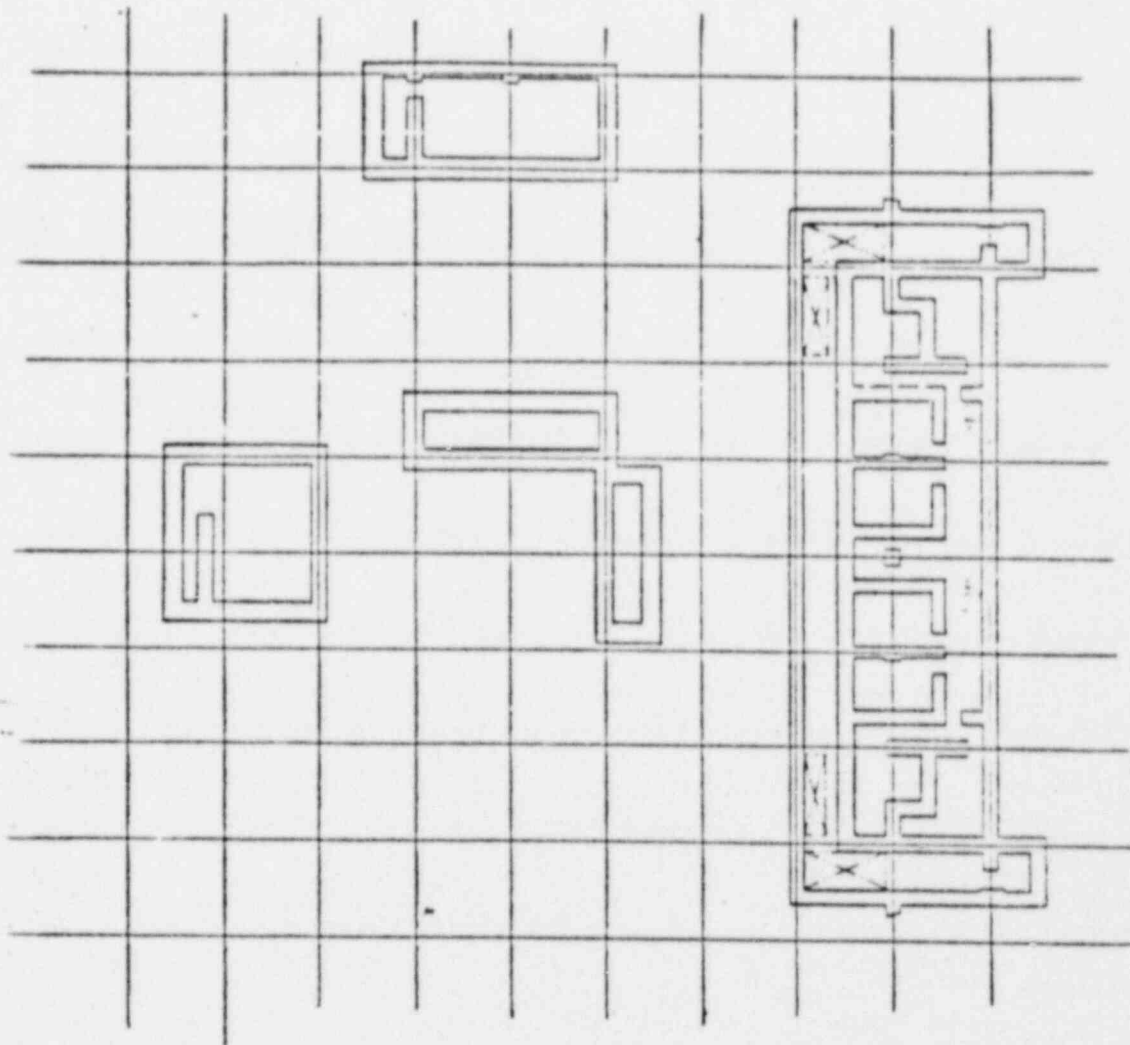
Cover Sheet
Figure 6-6 (1 of 5)
Figure 6-6 (2 of 5)
Figure 6-6 (3 of 5)
Figure 6-6 (4 of 5)
Figure 6-6 (5 of 5)

EVALUATION OF THE EFFECTS OF POSTULATED
PIPE FAILURES OUTSIDE CONTAINMENT
FOR
MCGUIRE NUCLEAR STATION

May 2, 1977

REPORT NO. MDS/PDG-77-1

Revision 1	8-15-77
Revision 2	10-06-78
Revision 3	11-05-80
Revision 4	1-26-81



This entire floor is at 212°F unless otherwise noted.

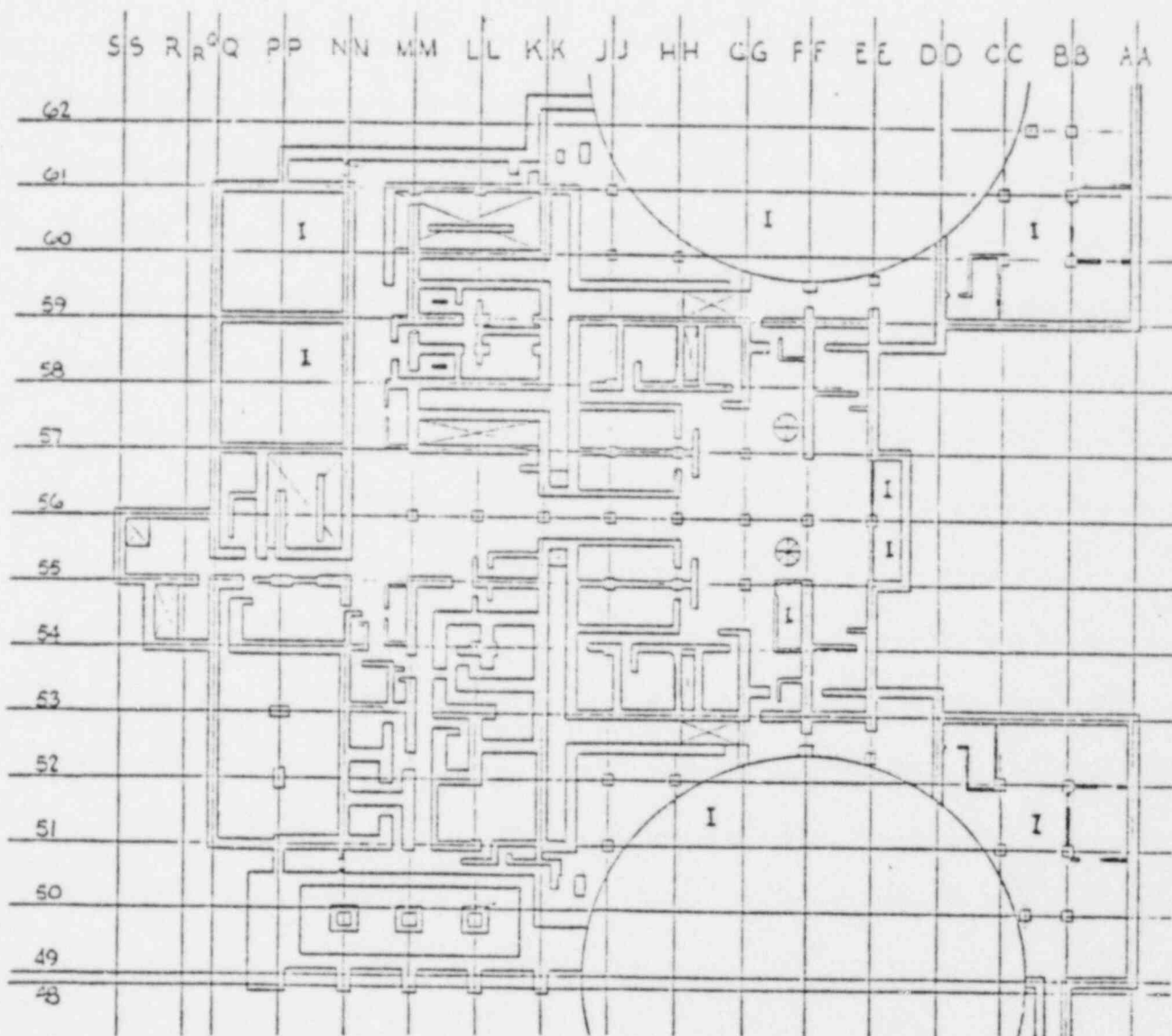
Enveloped Peak Temperatures
(within 1/2 hour) for Elevation
695'

FIGURE 6-6

SHEET 1 OF 5

POOR ORIGINAL

REVISION 4



Regions denoted "I" are isolated from environmental temperature effects.
This entire floor is at 212°F unless otherwise noted.

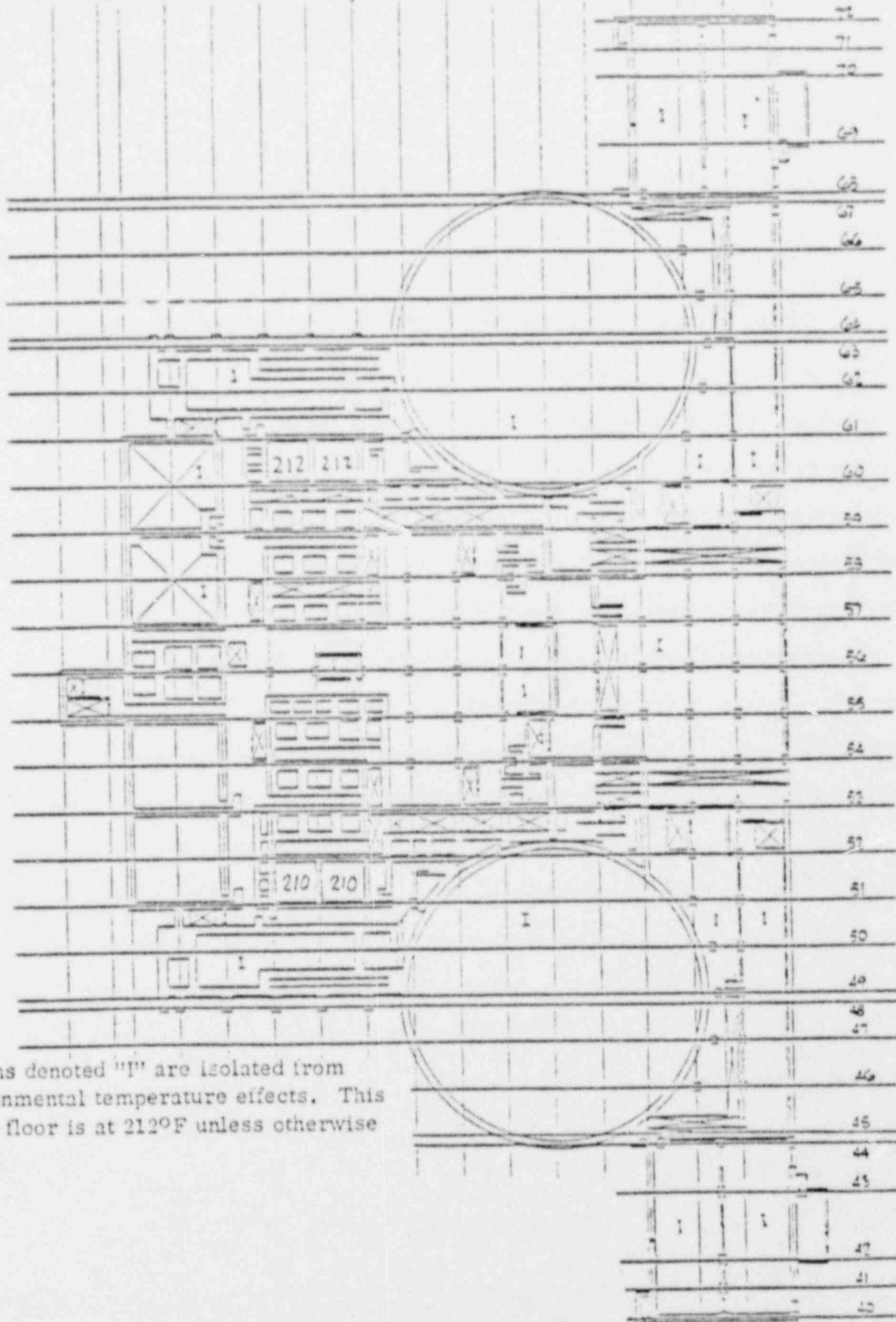
Enveloped Peak Temperatures
(within 1/2 hour) for Elevation
716'

FIGURE 6-6
SHEET 2 OF 5

POOR ORIGINAL

REVISION 4

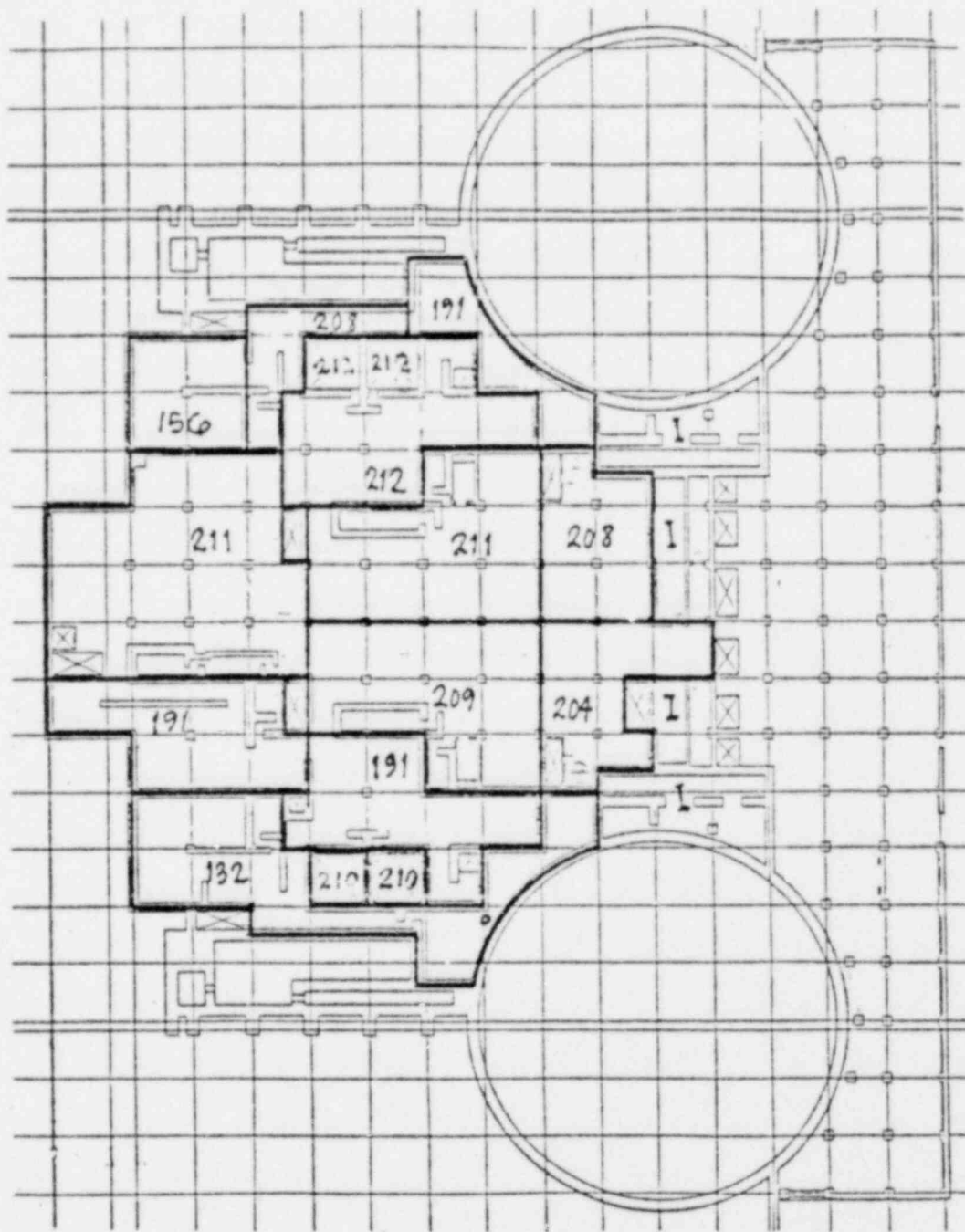
SS R²Q PP NN MM LL KK JJ HH GG FF EE DD CC BB AA



Regions denoted "I" are isolated from environmental temperature effects. This entire floor is at 212°F unless otherwise noted.

Enveloped Peak Temperatures
(within 1/2 hour) for Elevation
733'

POOR ORIGINAL



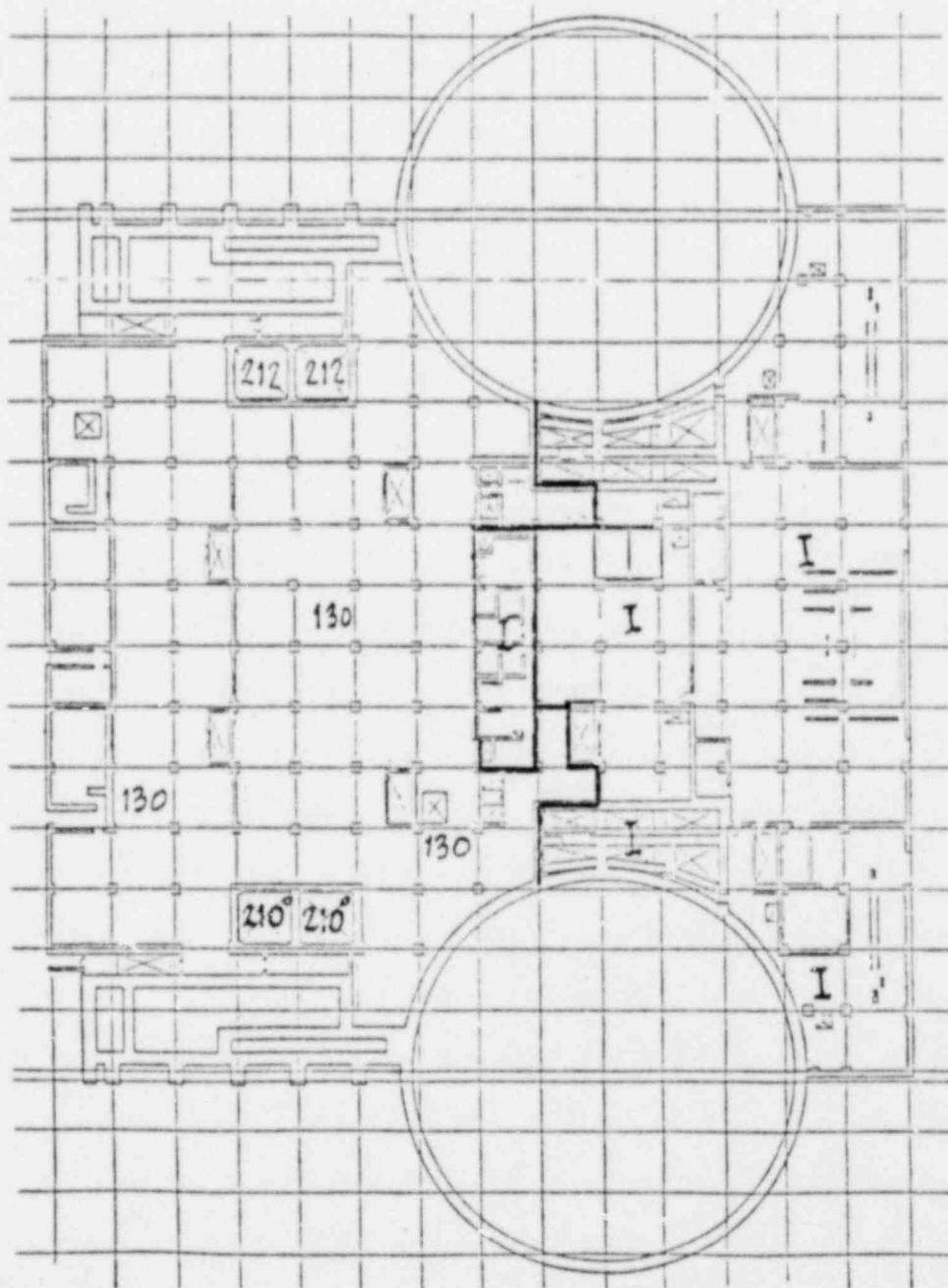
Enveloped Peak Temperatures
(within 1/2 hour) for Elevation
750'

FIGURE 6-6

SHEET 4 OF 5

POOR ORIGINAL

REVISION 4



Enveloped Peak Temperatures
(within 1/2 hour) for Elevation
767'

FIGURE 6-6

SHEET 5 OF 5

POOR ORIGINAL

REVISION 4

Report No. MDS/PDG-77-1
Revision 4
January 26, 1981

Remove these pages:

Cover Sheet
Figure 6-6 (1 of 5)
Figure 6-6 (2 of 5)
Figure 6-6 (3 of 5)
Figure 6-6 (4 of 5)
Figure 6-6 (5 of 5)

Insert these pages:

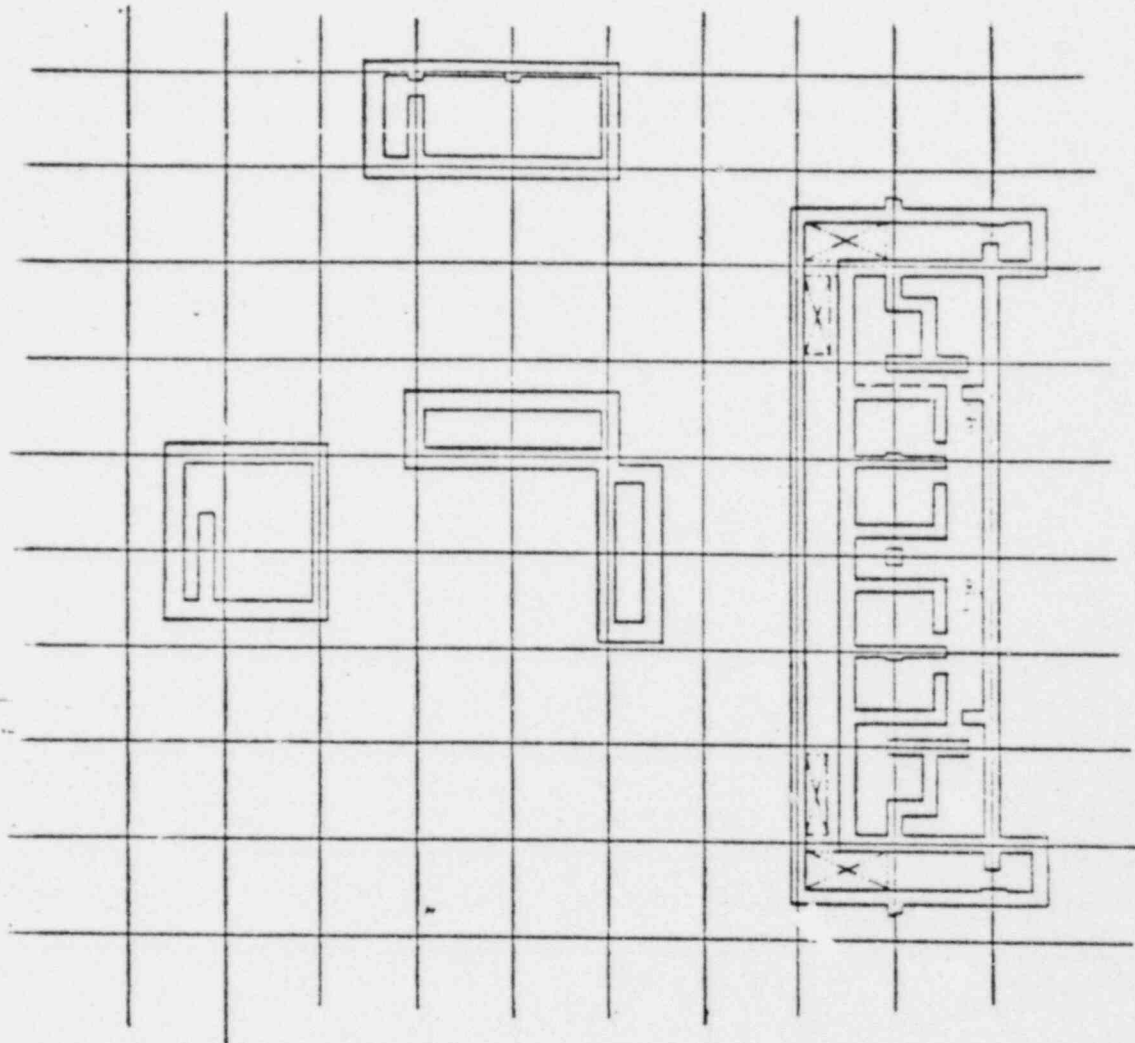
Cover Sheet
Figure 6-6 (1 of 5)
Figure 6-6 (2 of 5)
Figure 6-6 (3 of 5)
Figure 6-6 (4 of 5)
Figure 6-6 (5 of 5)

EVALUATION OF THE EFFECTS OF POSTULATED
PIPE FAILURES OUTSIDE CONTAINMENT
FOR
MCGUIRE NUCLEAR STATION

May 2, 1977

REPORT NO. MDS/PDG-77-1

Revision 1	8-15-77
Revision 2	10-06-78
Revision 3	11-05-80
Revision 4	1-26-81



This entire floor is at 212°F unless otherwise noted.

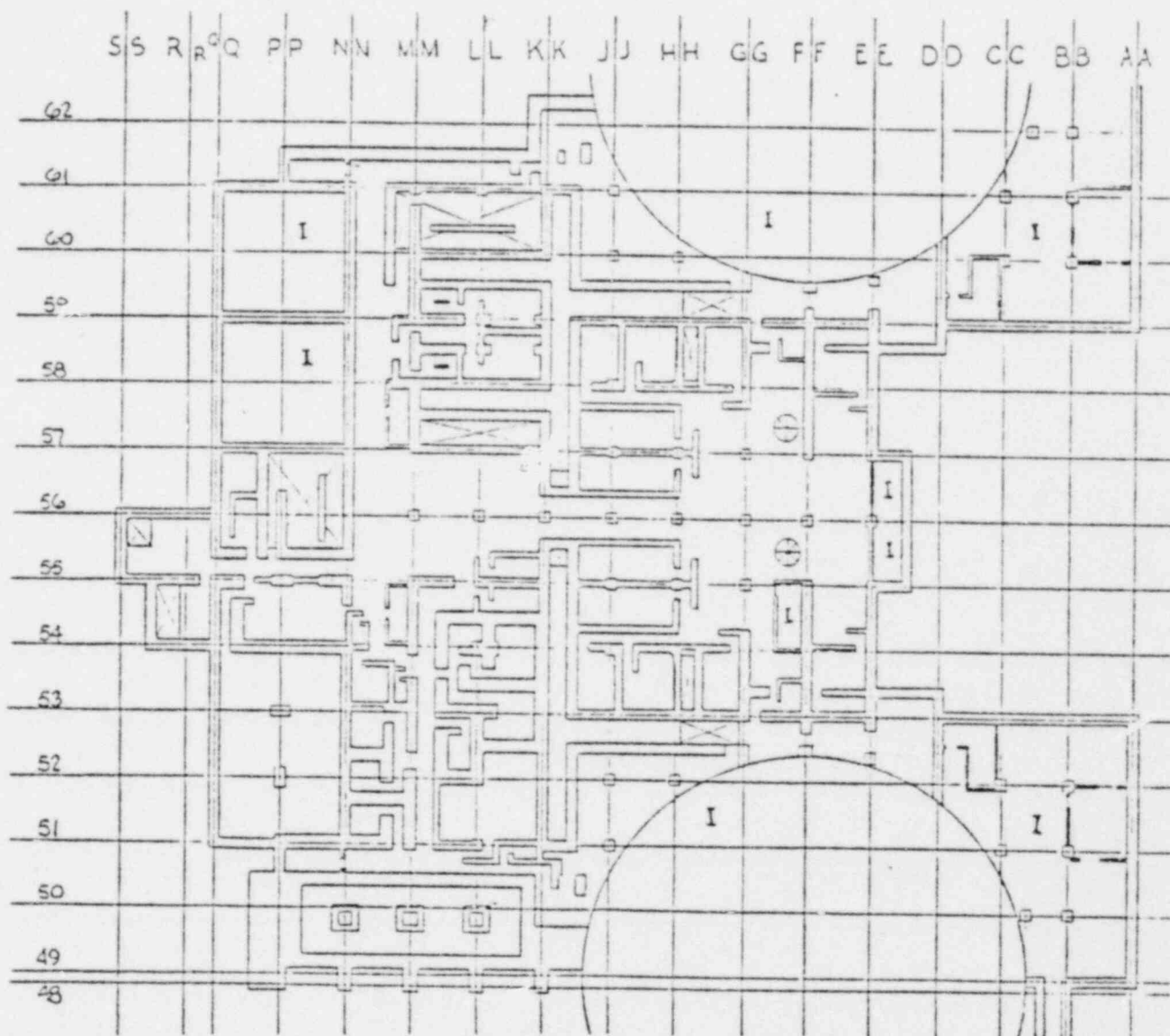
Enveloped Peak Temperatures
(within 1/2 hour) for Elevation
695'

FIGURE 6-6

SHEET 1 OF 5

POOR ORIGINAL

REVISION 4



Regions denoted "I" are isolated from environmental temperature effects.
This entire floor is at 212°F unless otherwise noted.

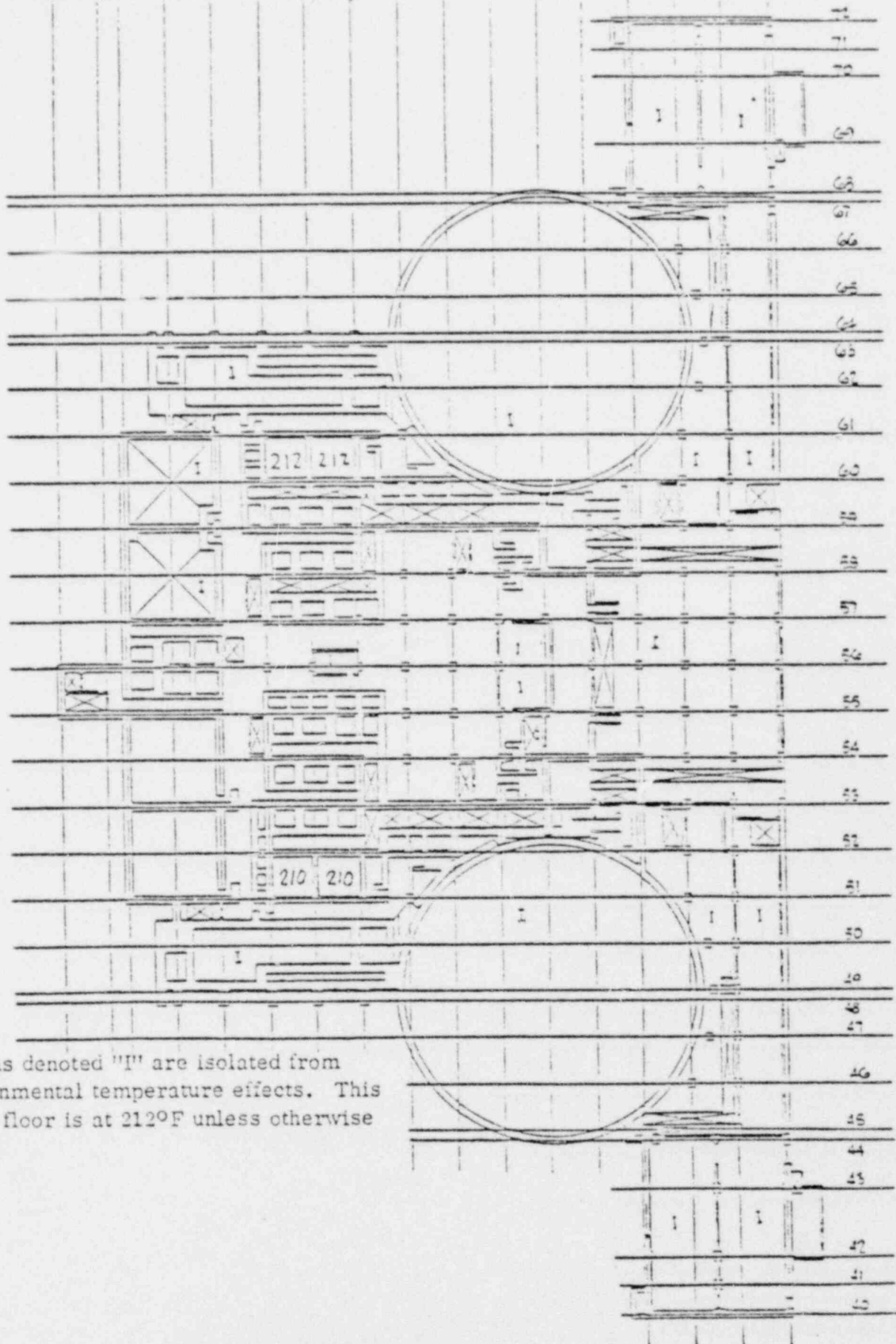
Enveloped Peak Temperatures
(within 1/2 hour) for Elevation
716'

FIGURE 6-6
SHEET 2 OF 5

POOR ORIGINAL

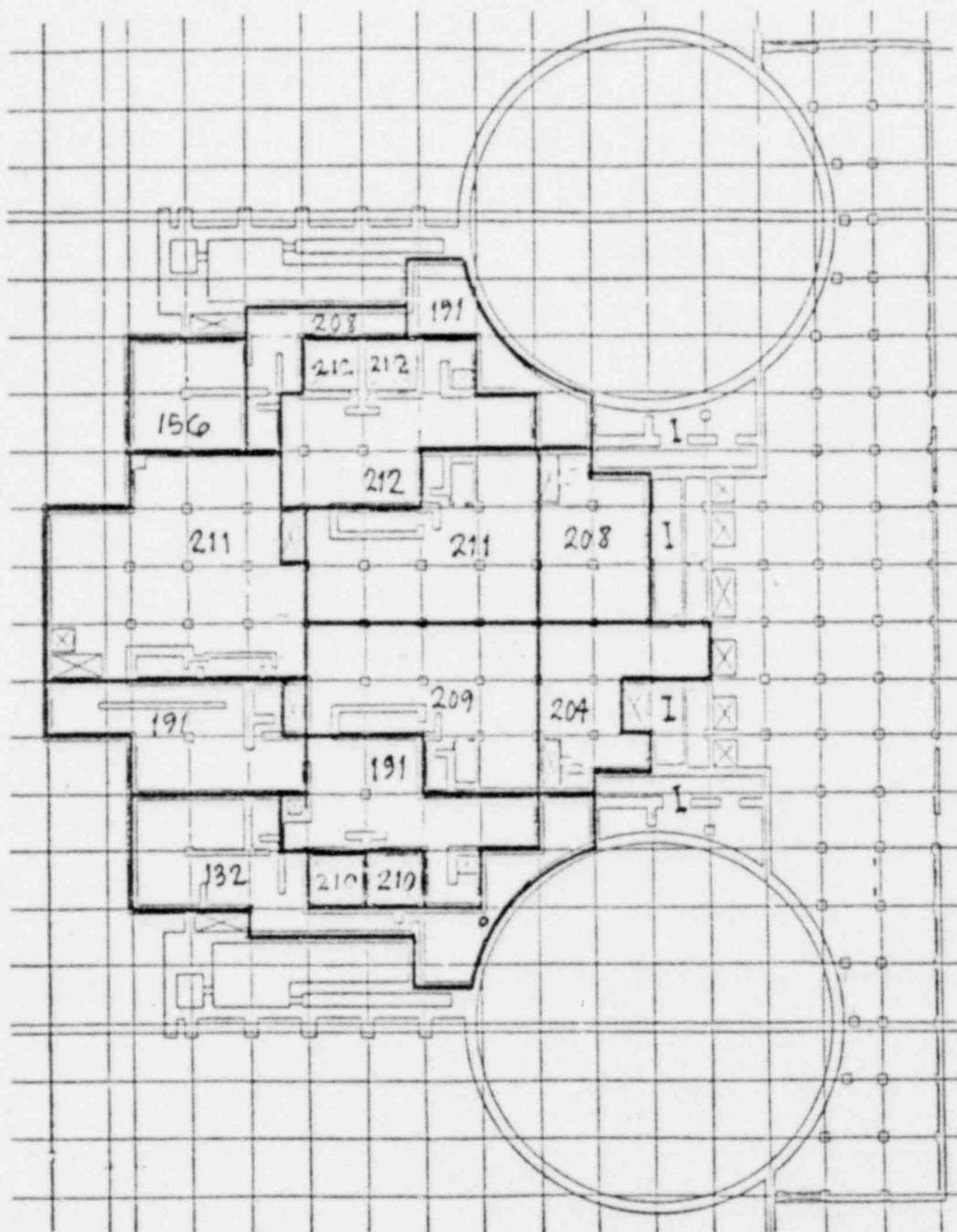
REVISION 4

SIS R²Q PP NN MM LL KK JJ HH GG FF EE DD CC BB AA



Regions denoted "I" are isolated from environmental temperature effects. This entire floor is at 212°F unless otherwise noted.

Enveloped Peak Temperatures
(within 1/2 hour) for Elevation
733'



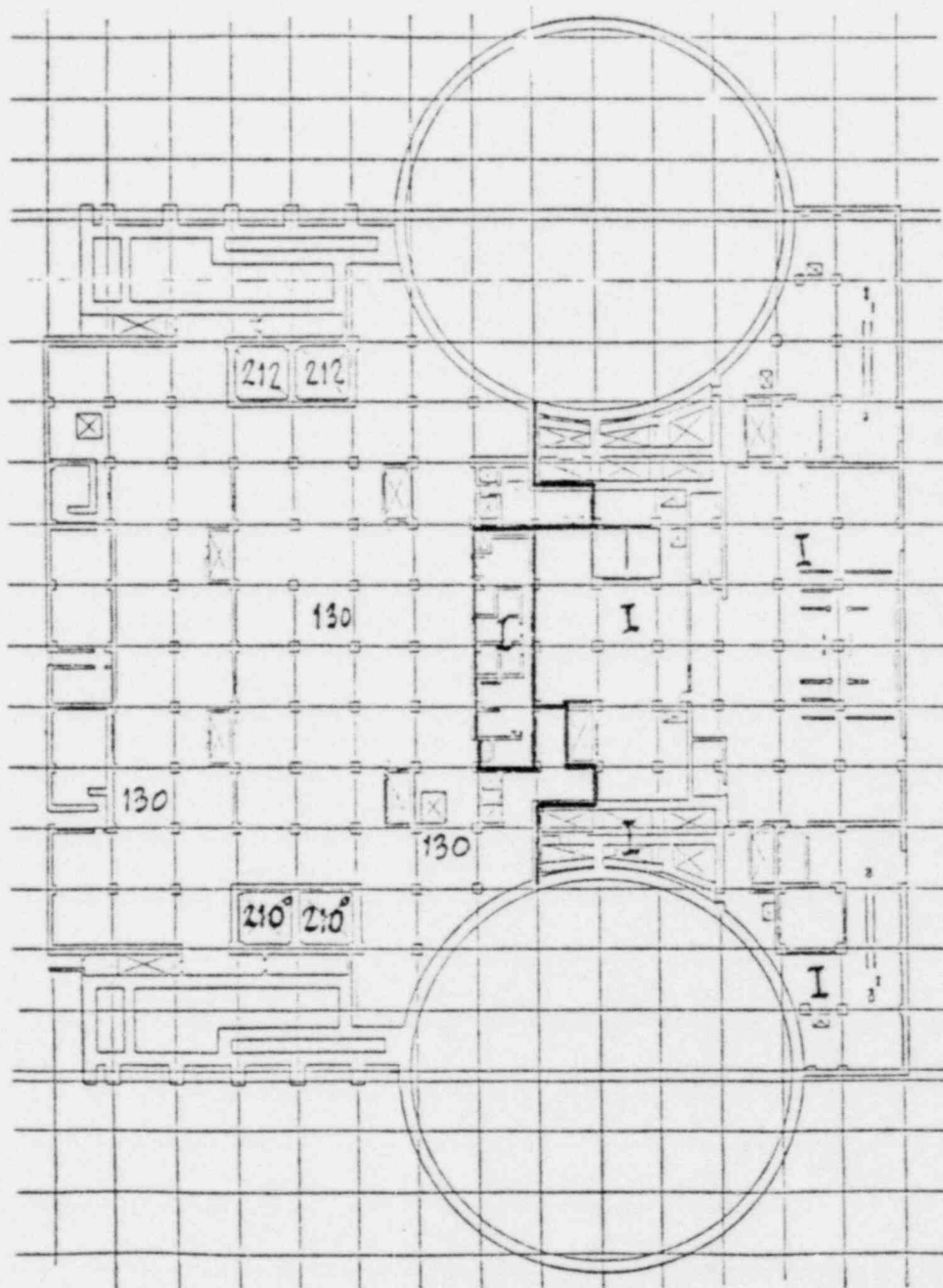
Enveloped Peak Temperatures
(within 1/2 hour) for Elevation
750'

FIGURE 6-6

SHEET 4 OF 5

POOR ORIGINAL

REVISION 4



Enveloped Peak Temperatures
(within 1/2 hour) for Elevation
767'

FIGURE 6-6

SHEET 5 OF 5

POOR ORIGINAL

REVISION 4