



## LONG ISLAND LIGHTING COMPANY

### SHOREHAM NUCLEAR POWER STATION

P.O. BOX 618, NORTH COUNTRY ROAD • WADING RIVER, N.Y. 11792

WILLIAM E. STEIGER, JR.

ASSISTANT VICE PRESIDENT—NUCLEAR OPERATIONS

SNRC-1698

APR 4 1990

U.S. Nuclear Regulatory Commission  
ATTN: Document Control Desk  
Washington, D.C. 20555

Revision of Emergency Preparedness Plan  
Shoreham Nuclear Power Station - Unit 1  
Docket No. 50-322

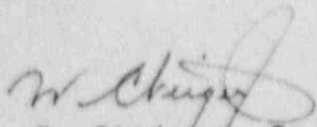
Gentlemen:

In accordance with 10CFR Part 50, Appendix E., Section V and 10CFR50.4, LILCO is forwarding a change to the Shoreham Nuclear Power Station Emergency Preparedness Plan ("Plan"). As detailed in the attachment to this letter, this change removes the position of Corporate Quality Assurance from the Emergency Response Organization (ERO).

This change is being made because, with SNPS in a defueled condition, the functional requirements of the position are no longer needed in the ERO. Personnel who previously filled the Corporate Quality Assurance position have been reassigned to other positions in the ERO.

Pursuant to 10CFR §50.54(q), LILCO has reviewed these changes and has concluded that they do not reduce the effectiveness of the Plan and that the Plan is in compliance with 10CFR50.47 and Part 50, Appendix E.

Should you have any questions or need additional clarification please do not hesitate to call my office.

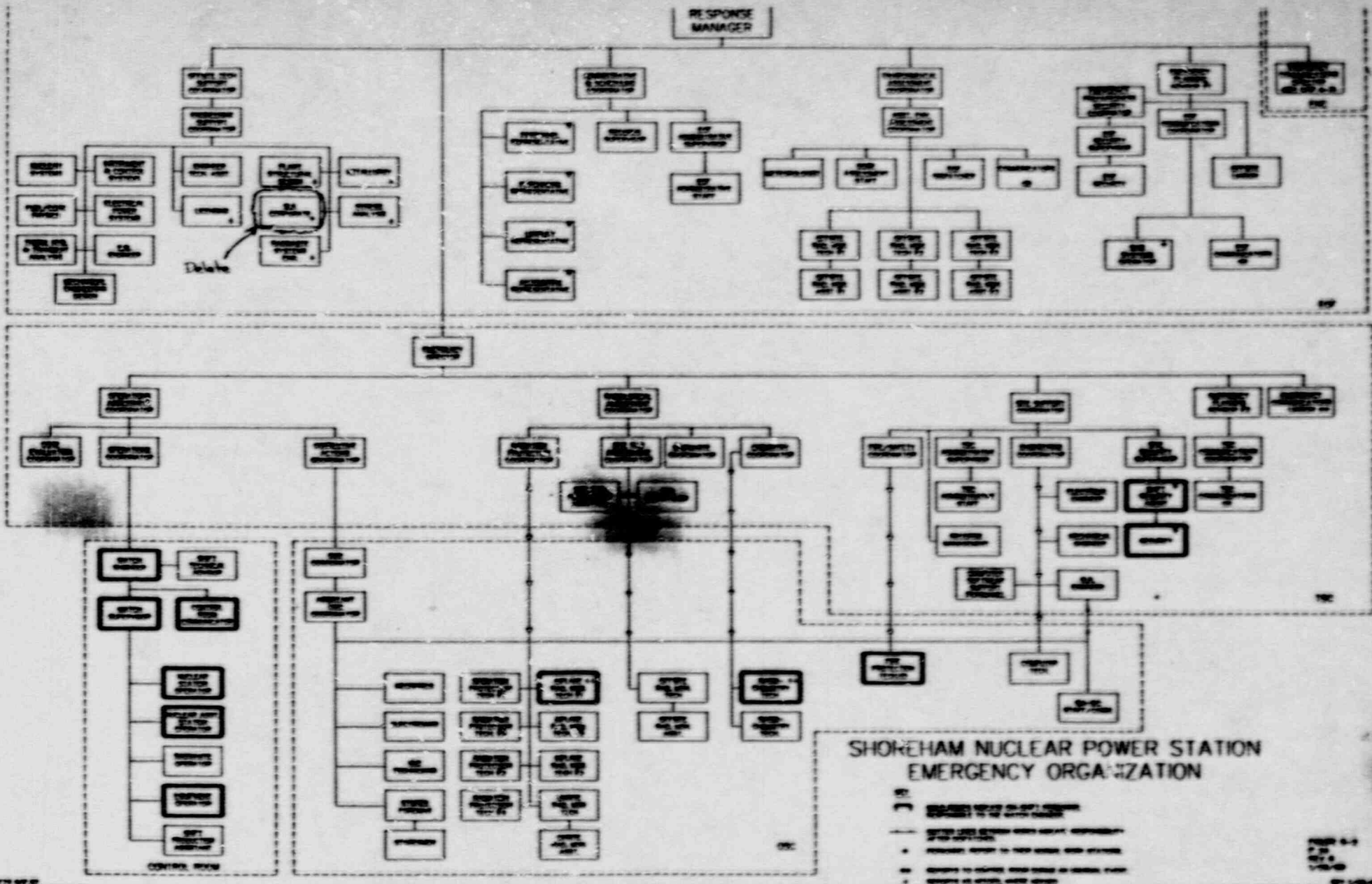
  
W. E. Steiger, Jr.  
Assistant Vice President  
Nuclear Operations

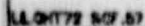
GJG/ap  
Attachment

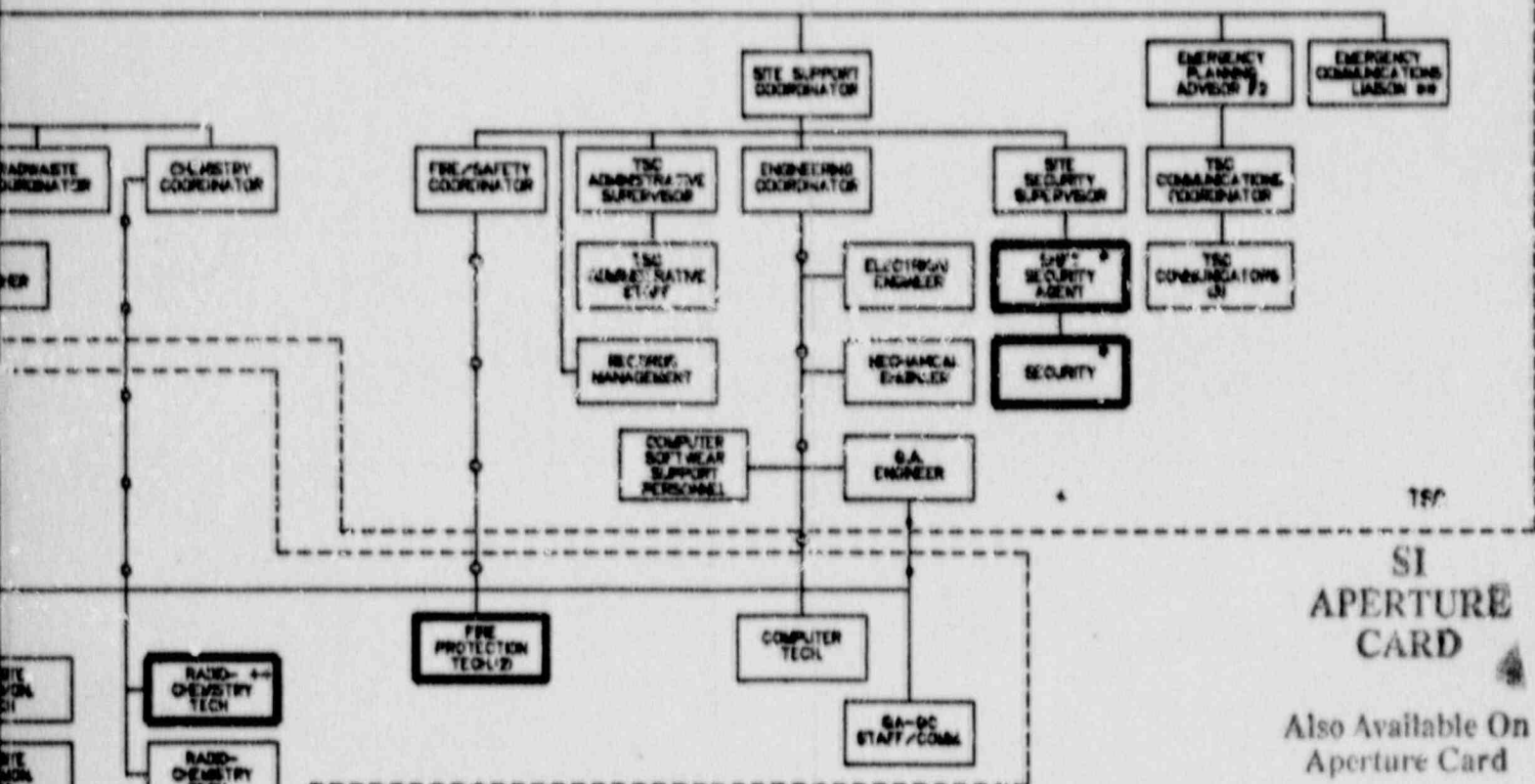
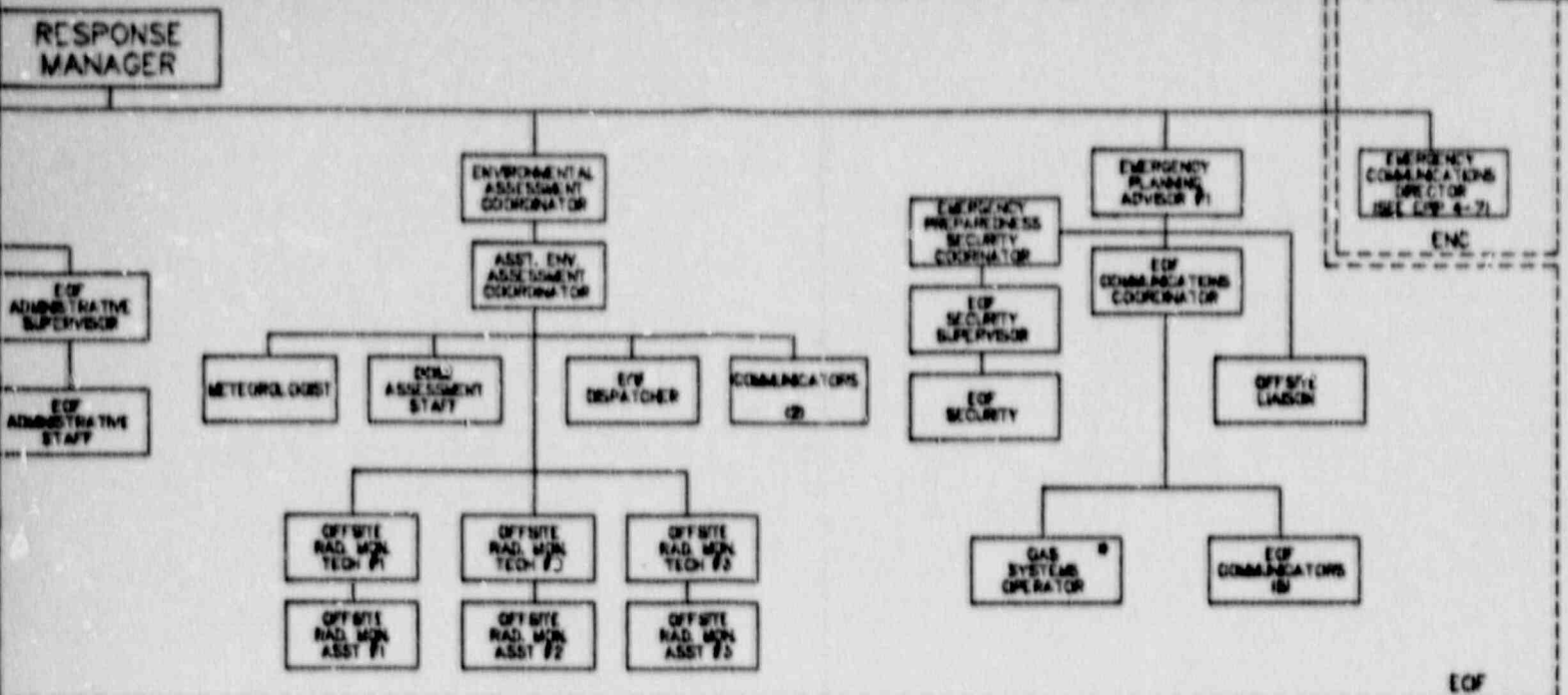
9004130164 900404  
FDR ADOCK 05000322  
F PDC

cc: S. Brown  
T. T. Martin  
L. Doerflein

A045  
11







## SHOREHAM NUCLEAR POWER STATION EMERGENCY ORGANIZATION

### KEY



SOLID LINES INDICATE ON-SHIFT PERSONNEL RESPONSIBLE TO THE WATCH ENGINEER.



DOTTED LINES BETWEEN BOXES INDICATE RESPONSIBILITY AFTER DISPATCHED.



\* PERSONNEL REPORT TO THEIR NORMAL WORK STATIONS.



\*\* REPORTS TO CONTROL ROOM DURING AN UNUSUAL EVENT.



+ REPORTS AS NEEDED, WHERE NEEDED

9004130164-01

FIGURE 5-2  
P. 26  
REV. 8  
1/08/88

BET 1/08/88