

POWER-STRUT

VAN HUFFEL TUBE CORPORATION

P.O. Box 1540 • WARREN, OHIO 44482 • Telephone (216) 372-XXXX

1711

November 25, 1981

EMV VAN H



Director
Office of Inspection & Enforcement
U. S. NUCLEAR REGULATORY COMMISSION
Washington, D. C. 20555

Subject: 10CFR21 Revised Report

Reference: Power-Strut 10CFR21 Report
Dated November 9, 1981

Gentlemen:

The above referenced report has been revised to include Nine Mile Point Unit 2, as a nuclear facility potentially affected, the specific shipment and quantity of basic components (PS-9227-1/2RS) strut nut^s potentially affected.

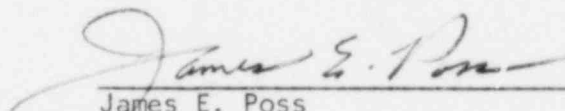
On November 5, 1981, Power-Strut's telephone notification under 10CFR21 to the USNRC Region 1 Duty Officer, Mr. T. Martin, included the Nine Mile Point Unit 2 facility. The inclusion of Nine Mile Point Unit 2 was with advisement that Power-Strut records did not indicate imposition of 10CFR21, and the referenced report would not include this facility. Mr. Martin was further advised that Stone & Webster Engineering for this facility had been notified of the potential noncompliance.

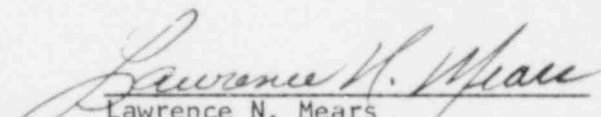
A subsequent visit by L. Mears, Power-Strut Quality Manager, to the Nine Mile Point Unit 2 job site on November 11 and 12, 1981, verified Stone & Webster's identification and segregation of the potentially nonconforming material detailed in this revised report.

During this job site visit, a review of Stone & Webster's, Nine Mile Point Unit 2, Field Purchasing Specification NMP2-M070A for permanent and certain nonpermanent material, verified inclusion of 10CFR21 to suppliers and subsuppliers. Power-Strut is reviewing the requirement with agents, distributors, etc., to pass on customer requirements to the manufacturers.

Very truly yours,

POWER-STRUT DIVISION
VAN HUFFEL TUBE CORPORATION


James E. Poss
Vice President


Lawrence N. Mears
Quality Manager

JEP/LNM/sak

Enclosure

cc: All w/Enclosure

- A. Agarwal, S & W, Cherry Hill
- E. Sweeney, S & W, River Bend Job Site
- K. Luper, S & W, River Bend Job Site
- J. Carter, S & W, Boston
- C. Corso, S & W, Nine Mile Point

IF19
S.11

8112030440 811125
PDR ADOCK 05000220
S PDR

POWER-STRUT

VAN HUFFEL TUBE CORPORATION

P.O. Box 1540 • WARREN, OHIO 44482 • Telephone (216) 372-XXXX
9990 1711

November 9, 1981

Director
Office of Inspection & Enforcement
U. S. NUCLEAR REGULATORY COMMISSION
Washington, D. C. 20555

Subject: 10CFR21 -- Report of Defect Related to
River Bend Nuclear Power Station,
St. Francisville, LA; & Nuclear Projects
WNP #1 & 4, Hanford Works, Richland, WA

Gentlemen:

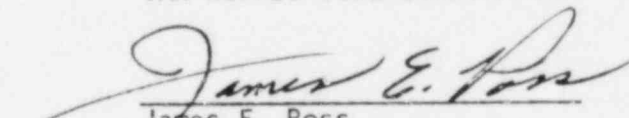
This report describes a condition revealed as a result of Stone & Webster Engineering's initial notification of a potential noncompliance. This potential noncompliance is related to slip load values of PS-9227-1/2RS strut nuts.

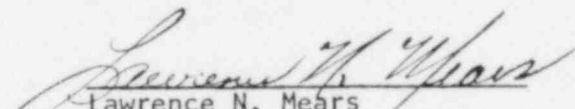
- A.) PS-9227-1/2RS strut nut slip load values determined by Stone & Webster Engineering for the River Bend Nuclear Project could not be consistently confirmed by testing. This testing was conducted by Stone & Webster Engineering and Power-Strut Division, Van Huffel Tube Corporation.

Applicable details as required by 10CFR21, paragraph 21.21 (b) (3), are contained in the attached report.

Very truly yours,

POWER-STRUT DIVISION
VAN HUFFEL TUBE CORPORATION


James E. Poss
Vice President


Lawrence N. Mears
Quality Manager

JEP/LNM/sak
Attachment
cc: Regional Director, USNRC, Region 1

8441130720

10CFR21 -- REPORT OF DEFECT RELATED TO
RIVER BEND NUCLEAR POWER STATION,
ST. FRANCISVILLE, LA; & NUCLEAR PROJECTS
WNP #1 & 4, HANFORD WORKS, RICHLAND, WA

November 9, 1981

Revised November 24, 1981

NAME AND ADDRESS OF THE INDIVIDUAL OR INDIVIDUALS INFORMING THE COMMISSION:

J. E. Poss, Vice President, Power-Strut Division
L. N. Mears, Quality Manager, Power-Strut Division
Van Huffel Tube Corporation
Dietz Road/P. O. Box 1540
Warren, Ohio 44482

IDENTIFICATION OF THE FACILITY, THE ACTIVITY, OR THE BASIC COMPONENT SUPPLIED FOR
SUCH FACILITY OR SUCH ACTIVITY WITHIN THE UNITED STATES WHICH FAILS TO COMPLY OR
CONTAIN A DEFECT.

1.) Basic Component Supplied:

Power-Strut Strut Nut, Part Number PS-9227-1/2RS

2.) Nuclear Facilities Potentially Affected:

- (A) River Bend Nuclear Station
St. Francisville, LA 70775
- (B) Nuclear Projects WNP #1 & #4 Hanford Works
Richland, WA 99352

Rev. —→ (C) Nine Mile Point Unit 2
Scriba, New York 13093

3.) Activity:

Support System Component Material

IDENTIFICATION OF THE FIRM CONSTRUCTING THE FACILITY OR SUPPLYING THE BASIC COMPONENT
WHICH FAILS TO COMPLY OR CONTAIN A DEFECT.

1.) Manufacturer of Basic Component:

Power-Strut Division
Van Huffel Tube Corporation
Dietz Road
Warren, Ohio 44482

NATURE OF THE DEFECT OR FAILURE TO COMPLY AND THE SAFETY HAZARD WHICH IS CREATED OR COULD BE CREATED BY SUCH DEFECT OR FAILURE TO COMPLY.

1.) Nature of Defect:

Shallow depth of strut nut serrations, part number PS-9227-1/2RS

2.) Safety Hazard:

Potential reduced load carrying capacity for slip values in shear loading (slip along axis of channel) Ref. Attachment 1-A.

Note: This noncompliance is not applicable to strut nut pullout tension values (perpendicular to axis of channel) Ref. Attachment 1-B.

THE DATE ON WHICH THE INFORMATION OF SUCH DEFECT OR FAILURE TO COMPLY WAS OBTAINED.

November 5, 1981

IN THE CASE OF A BASIC COMPONENT WHICH CONTAINS A DEFECT OR FAILS TO COMPLY, THE NUMBER AND LOCATION OF ALL COMPONENTS IN USE AT, SUPPLIED FOR, OR BEING SUPPLIED FOR ONE OR MORE FACILITIES OR ACTIVITIES SUBJECT TO THE REGULATIONS IN THIS PART.

| <u>LOCATION</u> | <u>PART NO.</u> | <u>CUSTOMER ORDER NO.</u> | <u>POWER-STRUT INVOICE NO.</u> | <u>QUANTITY</u> | <u>DATE SHIPPED</u> |
|------------------------|-----------------|-------------------------------|------------------------------------|-----------------|---------------------|
| River Bend | PS-9227-1/2RS | 12210-07378 | 8001 | 10,000 Ea. | 11-17-80 |
| River Bend | PS-9227-1/2RS | 12210-09231 | 0917 | 1,500 Ea. | 12-5-80 |
| River Bend | PS-9227-1/2RS | 12210-09231 | 1191 | 1,900 Ea. | 4-16-81 |
| WNP 1/4 Hanford | PS-9227-1/2RS | CA0650 | 0326 | 4,225 Ea. | 11-12-80 |
| Rev. Nine Mile Point 2 | PS-9227-1/2RS | FP012113 | 2122 | 2,000 Ea. | 4-21-81 |

THE CORRECTIVE ACTION WHICH HAS BEEN, IS BEING, OR WILL BE TAKEN: THE NAME OF THE INDIVIDUALS OR ORGANIZATIONS RESPONSIBLE FOR THE ACTION: AND THE LENGTH OF TIME THAT HAS BEEN OR WILL BE TAKEN TO COMPLETE THE ACTION.

1.) Corrective Action:

- (A) Identify and place on hold PS-9227-1/2RS strut nuts
- (B) Responsible design organizations to review and determine the effect of noncompliance based on their application of this product.
- (C) Power-Strut Division has developed and implemented an acceptance criteria for previously produced lots and all future production.

2.) Name of Organization Responsible for Corrective Action:

Power-Strut Division -- Items 1.A & 1.C

Responsible Design/Construction -- Items 1.A & 1.B

ANY ADVICE RELATED TO THE DEFECT OR FAILURE TO COMPLY ABOUT THE FACILITY, ACTIVITY, OR BASIC COMPONENT THAT HAS BEEN, IS BEING, OR WILL BE GIVEN TO THE PURCHASERS OR LICENSEES.

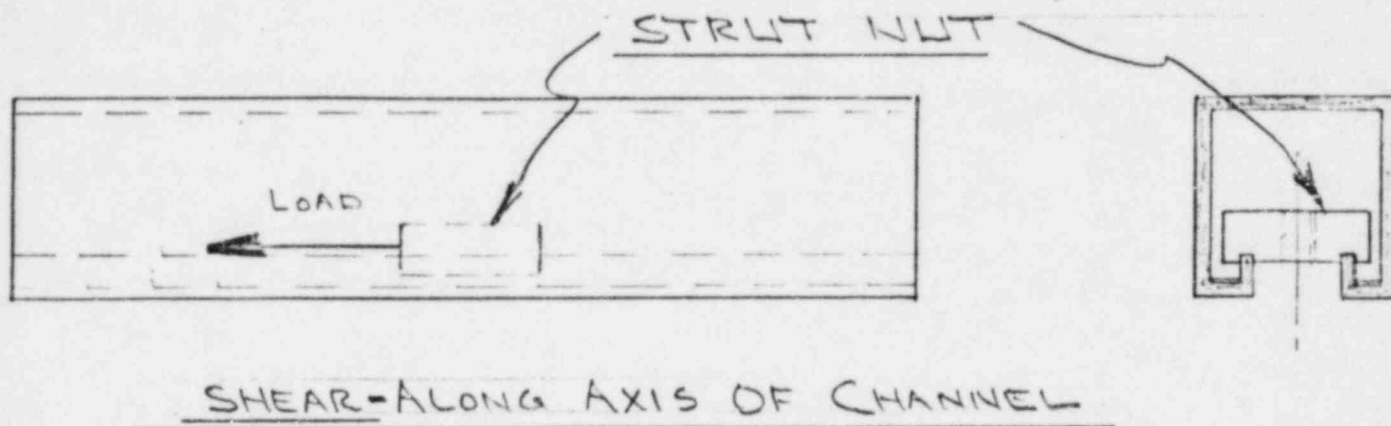
Power-Strut Division, Van Huffel Tube Corporation, has conducted an in-depth review of all previously produced production lots and shipments of PS-9227's. As a result of this review, the following has been determined:

- (A) The condition of shallow serrations in PS-9227 strut nuts is isolated to a specific production lot and specific shipments. (Ref. Locations and quantities supplied subject to regulations.)
- (B) The strut nut serrations for this specific production lot was manufactured on a press with insufficient tonnage to produce acceptable parts on a consistent basis. All other production lots were manufactured on a press with more than sufficient tonnage to consistently produce acceptable material.

10CFR21 -- REPORT OF DEFECT RELATED TO
RIVER BEND NUCLEAR POWER STATION,
ST. FRANCISVILLE, LA; & NUCLEAR PROJECTS
WNP #1 & 4, HANFORD WORKS, RICHLAND, WA

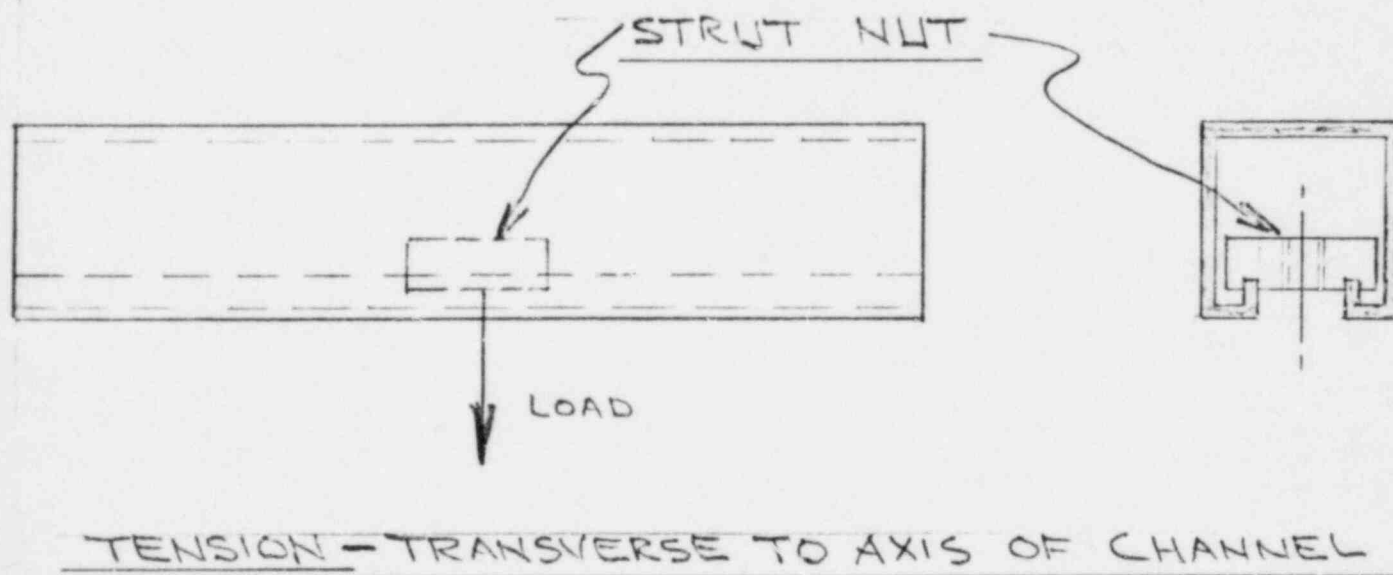
ATTACHMENT 1-A & ATTACHMENT 1-B

November 9, 1981



SKETCH 1A

(ZYZX10GA.)



SKETCH 1B

(ZXZX10GA.)