



Northern Indiana Public Service Company

Nuclear Staff
RR #1, Box 501
Chesterton, IN 46304
November 17, 1978

BAILLY GENERATING STATION N-1

Mr. Ronald Ballard
Environmental Projects Branch No. 1
Directorate of Licensing
U.S. Nuclear Regulatory Commission
Washington D.C. 20548

RE: NORTHERN INDIANA PUBLIC SERVICE COMPANY
BAILLY GENERATING STATION NUCLEAR 1
DOCKET 50-367

Dear Mr. Ballard:

Enclosed herewith are ten (10) copies of the following:

1. Well Charts for 11/1/78 - 11/8/78
2. Bailly Wells Without Recorders for 11/8/78
3. Pond Levels for 11/8/78
4. Pneumatic Pressure Transducers for 11/8/78
5. Water Meter Readings for 11/2/78 - 11/8/78

Sincerely,

R. J. Bohn
Manager, Nuclear Staff

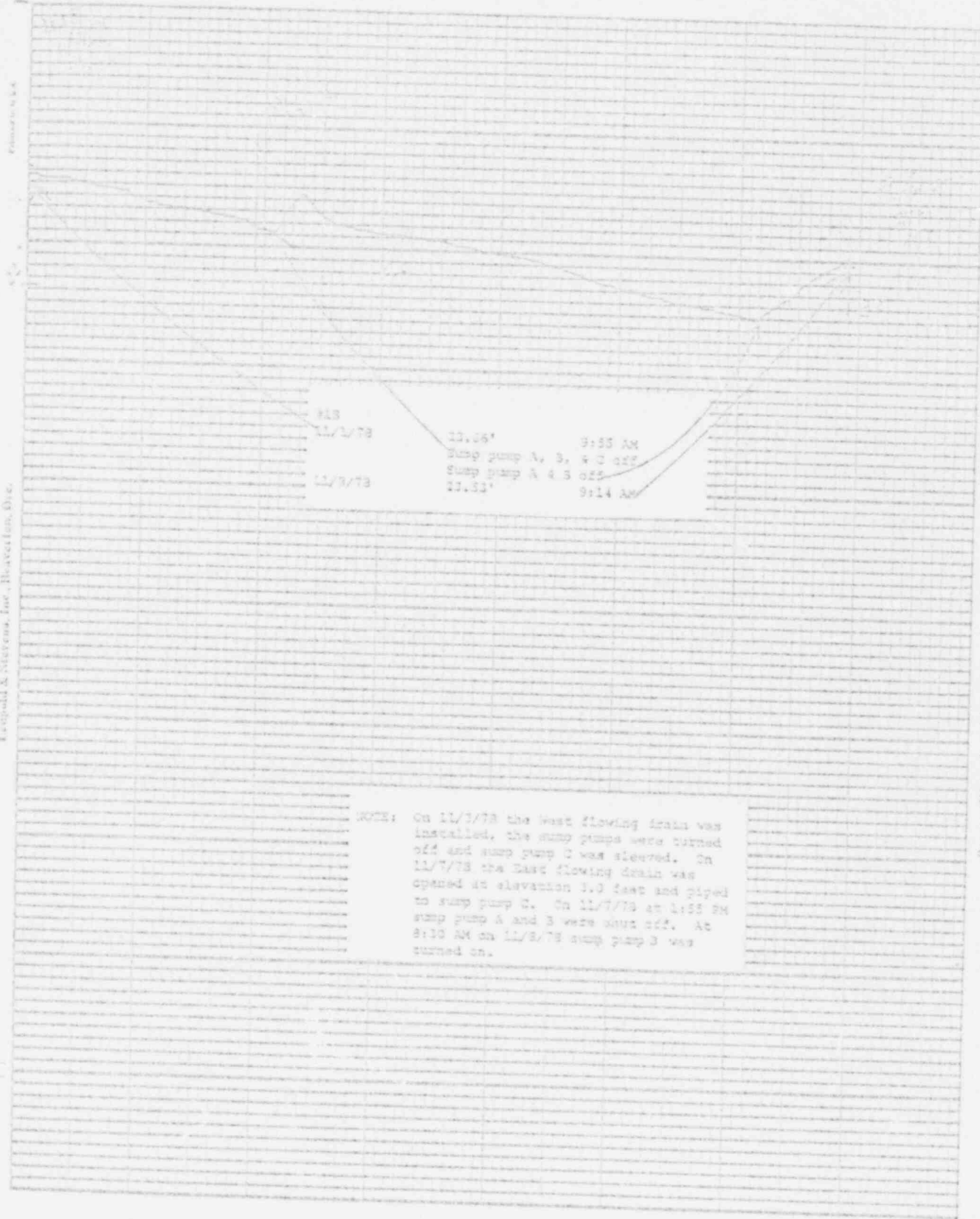
MD/na

Enclosures

File: Ground Water Observation Monitoring Wells

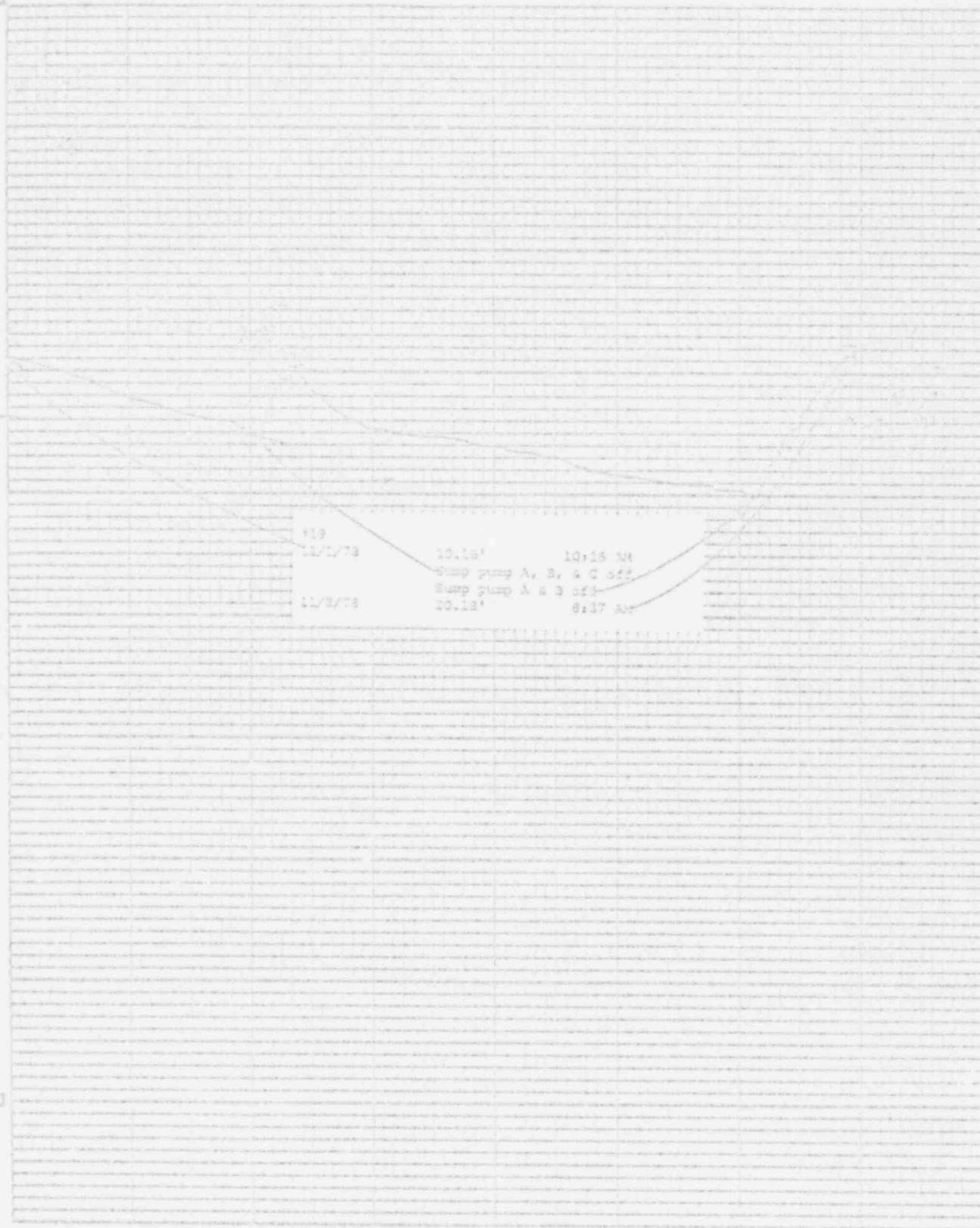
7911910 360-H

Doc 4
ES
1/10



Leopold & Stevens, Inc., Brevard, Ore.

Station 100.0



Seawater Level Recorder - Type F

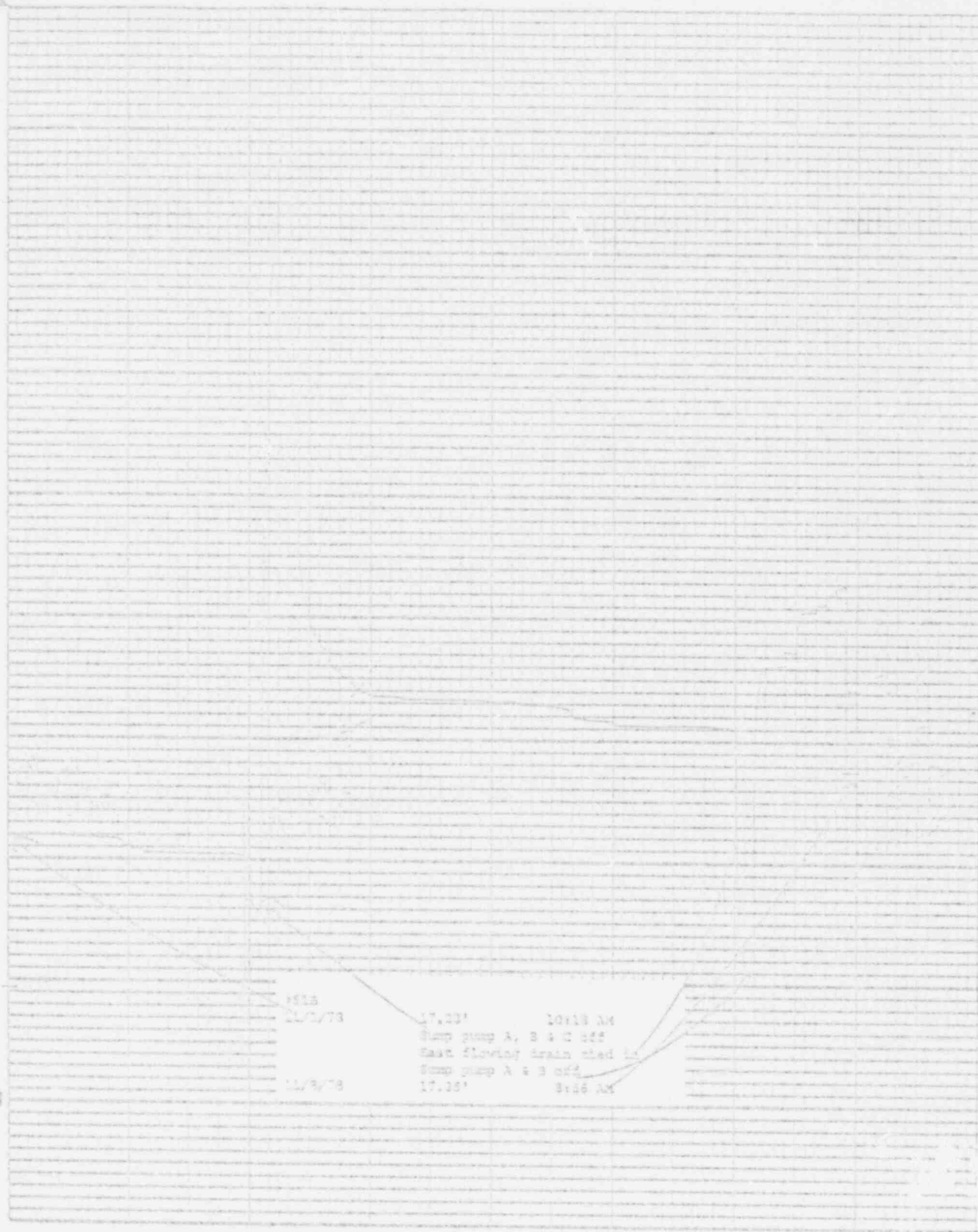
(5)

Chart P-1

Printed on 11/18

Leopold & Stevens, Inc., Houston, Tex.

ad



1615
11/17/78

17.33' 10:15 AM
Sump pump A, B & C off
East flowing drain tied in
Sump pump A & B off
17.35' 8:26 AM

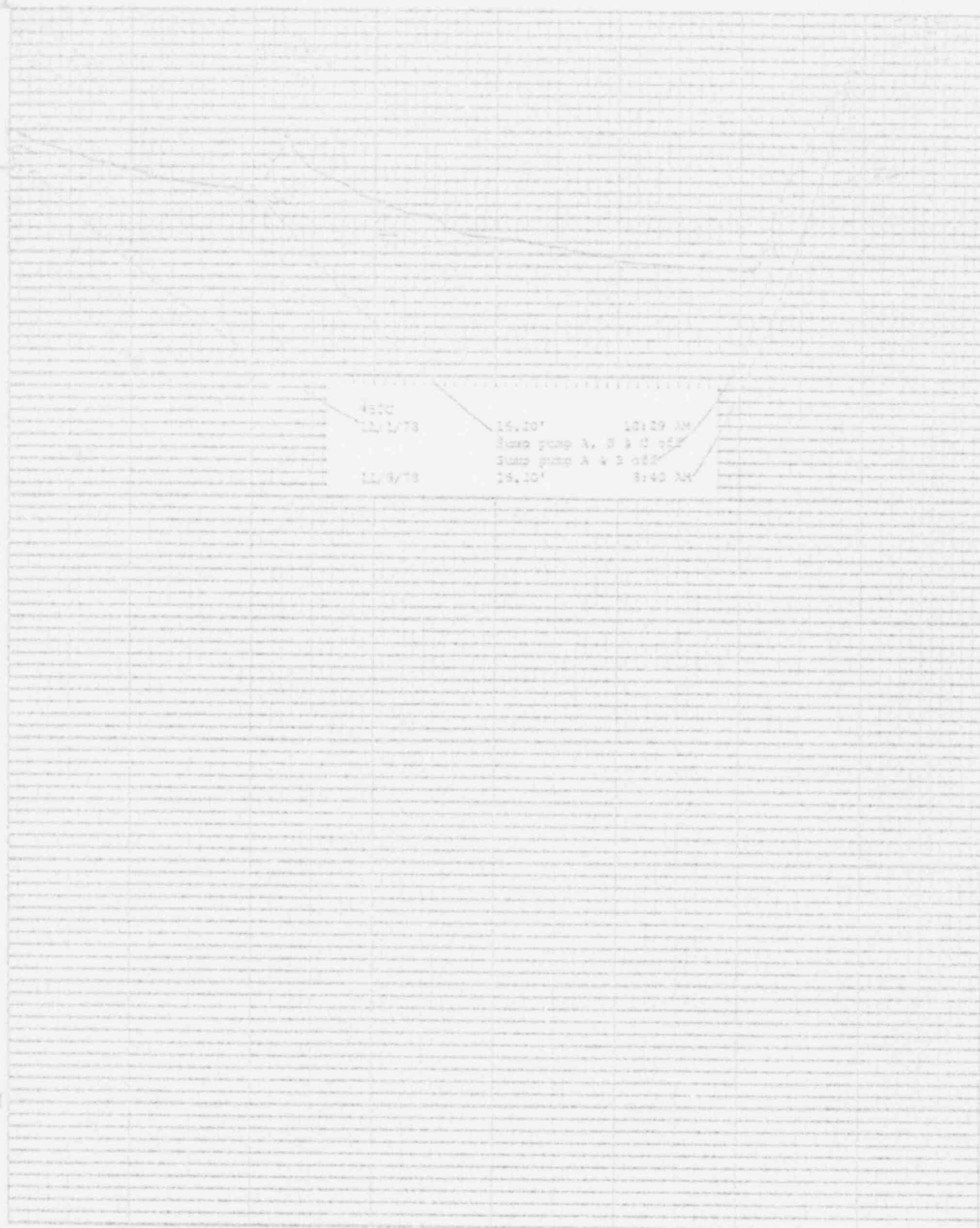
11/17/78

Chart 10-1

Stevens Water Level Recorder - Type B

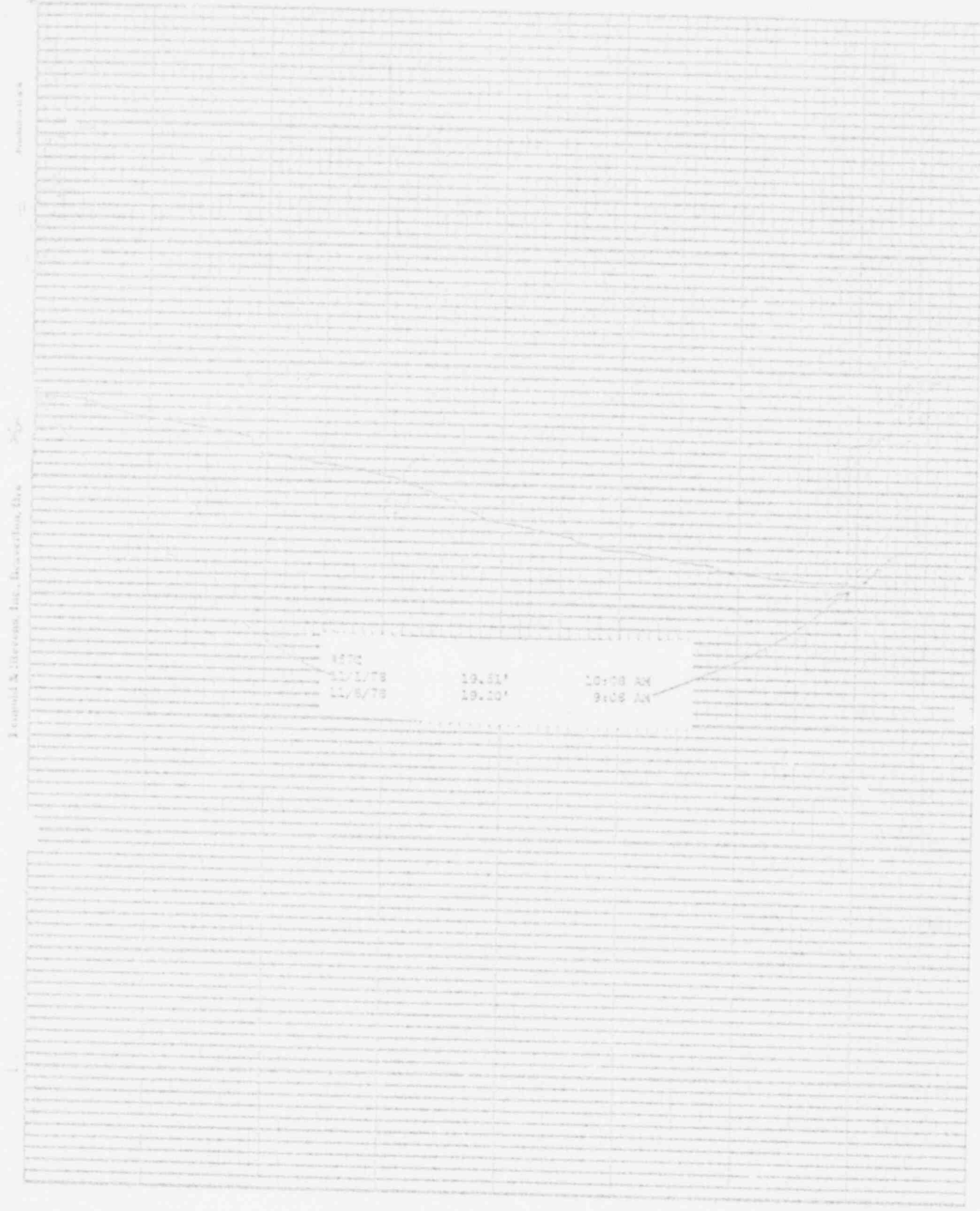
Leopold & Stevens, Inc., Hawthorne, Cal.

Pressure Head



Stevens Water Level Recorder - Type V

Chart 1-1

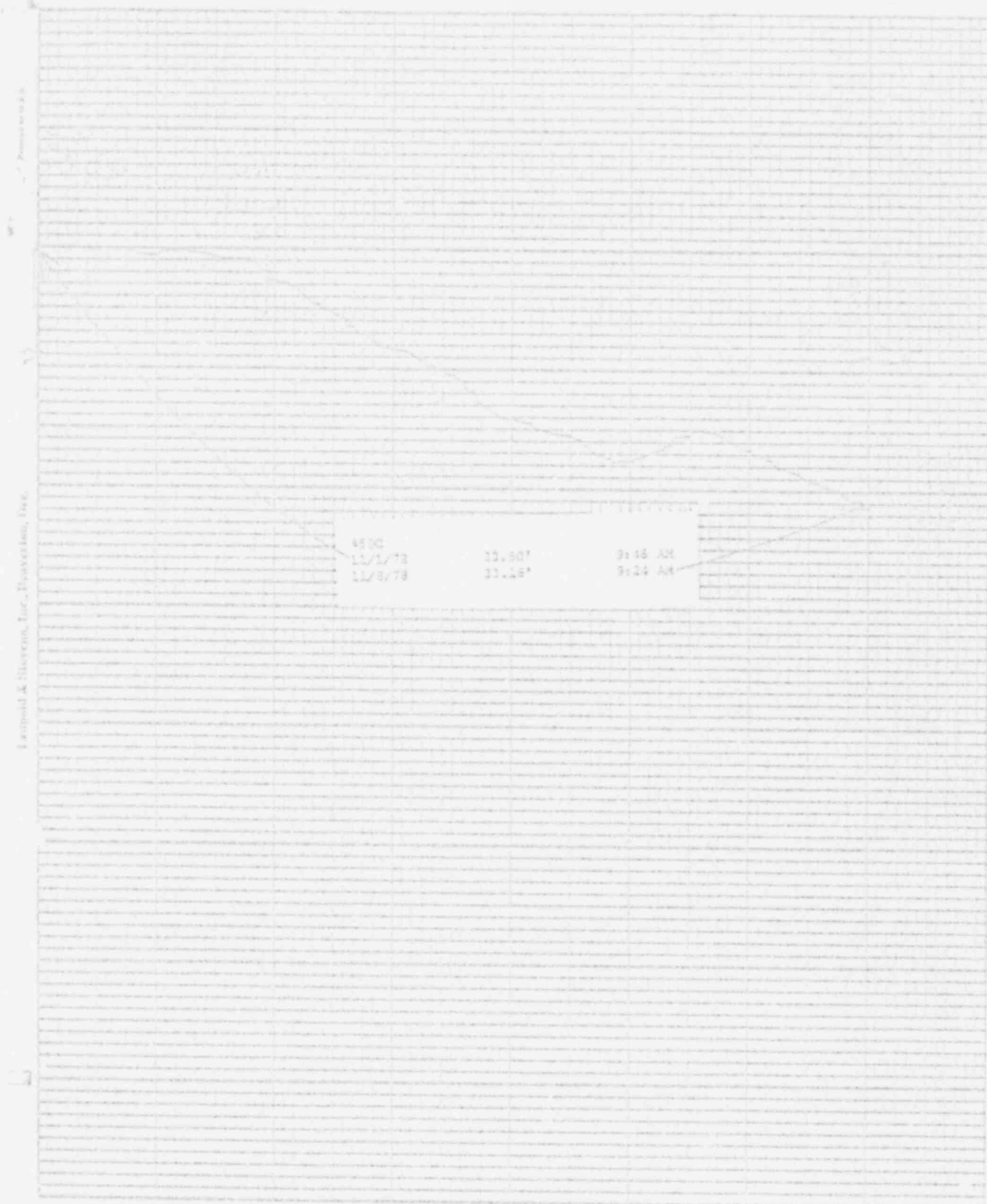


Legend: N. Direction, Inc., Direction, Inc.

Station: Water Level Recorder - Type B

Chart # 1

(1)



Latipol & Sherrin, Inc., Houston, Tex.

Seismic Water Level Recorder - Type B

