



Northern Indiana Public Service Company

Nuclear Staff
RR #3, Box 501
Chesterton, IN 46304
November 3, 1978

BAILLY GENERATING STATION N-1

Mr. Ronald Ballard
Environmental Projects Branch No. 1
Directorate of Licensing
U.S. Nuclear Regulatory Commission
Washington, D.C. 20545

RE: NORTHERN INDIANA PUBLIC SERVICE COMPANY
BAILLY GENERATING STATION NUCLEAR 1
DOCKET 50-367

Dear Mr. Ballard:

Enclosed herewith are ten (10) copies of the following:

1. Well charts for 10/18/78 - 10/25/78
2. Pond levels for 10/26/78
3. Bailly Wells Without Recorders for 10/25/78
4. Pneumatic Pressure Transducers for 10/25/78
5. Water Meter Readings for 10/19/78, 10/20/78
and 10/23/78
6. Dewatering Equipment Installation for 10/18/78 - 10/25/78

Sincerely,

R. J. Bohn
Manager, Nuclear Staff

MD/me

Enclosures

File: Ground Water Observation Monitoring Wells

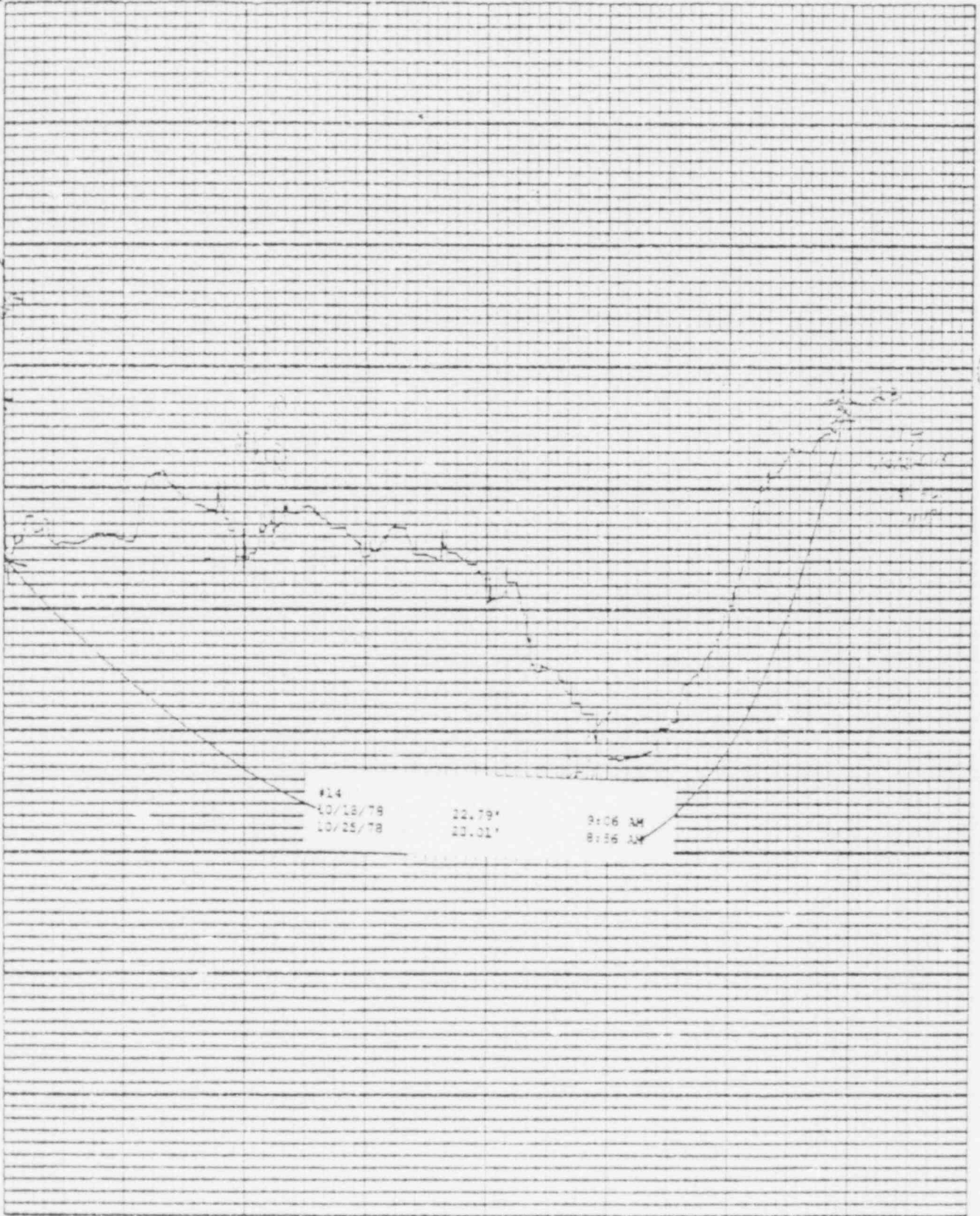
781114208
P,

DOX
ES
110*

Printed in U.S.A.

Leupold & Stevens, Inc., Beaverton, Ohio

10/15/70
10/16/70
10/17/70
10/18/70
10/19/70
10/20/70
10/21/70
10/22/70
10/23/70
10/24/70
10/25/70
10/26/70
10/27/70
10/28/70
10/29/70
10/30/70
10/31/70
11/1/70
11/2/70
11/3/70
11/4/70
11/5/70
11/6/70
11/7/70
11/8/70
11/9/70
11/10/70
11/11/70
11/12/70
11/13/70
11/14/70
11/15/70
11/16/70
11/17/70
11/18/70
11/19/70
11/20/70
11/21/70
11/22/70
11/23/70
11/24/70
11/25/70
11/26/70
11/27/70
11/28/70
11/29/70
11/30/70
12/1/70
12/2/70
12/3/70
12/4/70
12/5/70
12/6/70
12/7/70
12/8/70
12/9/70
12/10/70
12/11/70
12/12/70
12/13/70
12/14/70
12/15/70
12/16/70
12/17/70
12/18/70
12/19/70
12/20/70
12/21/70
12/22/70
12/23/70
12/24/70
12/25/70
12/26/70
12/27/70
12/28/70
12/29/70
12/30/70
12/31/70



#14

10/15/70
10/26/70

22.79'
22.01'

9:06 AM
8:36 AM

Chart F-1

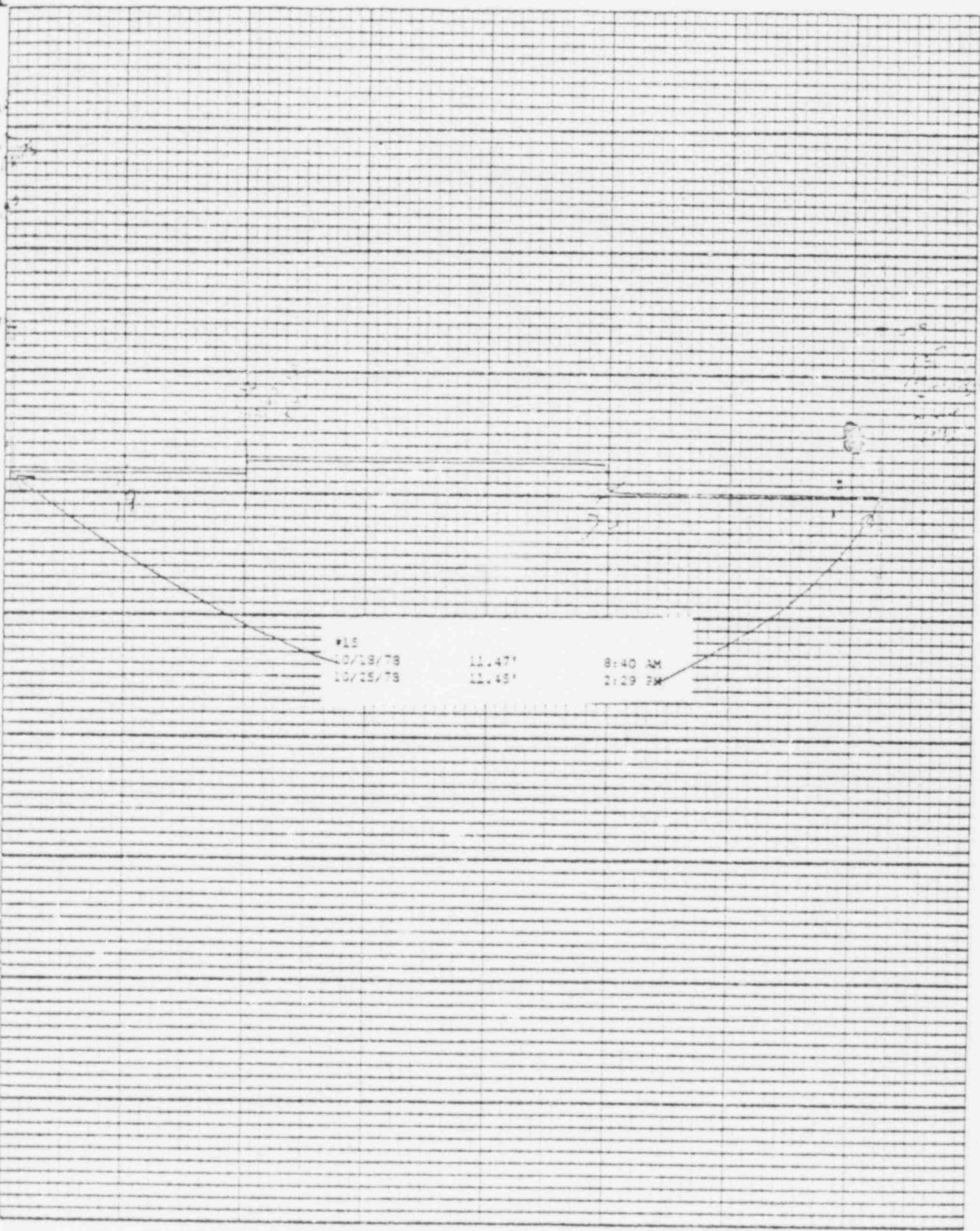
Stevens Water Level Recorder — Type F

Leopold & Stevens, Inc., Healdsburg, Cal.

10/15/78

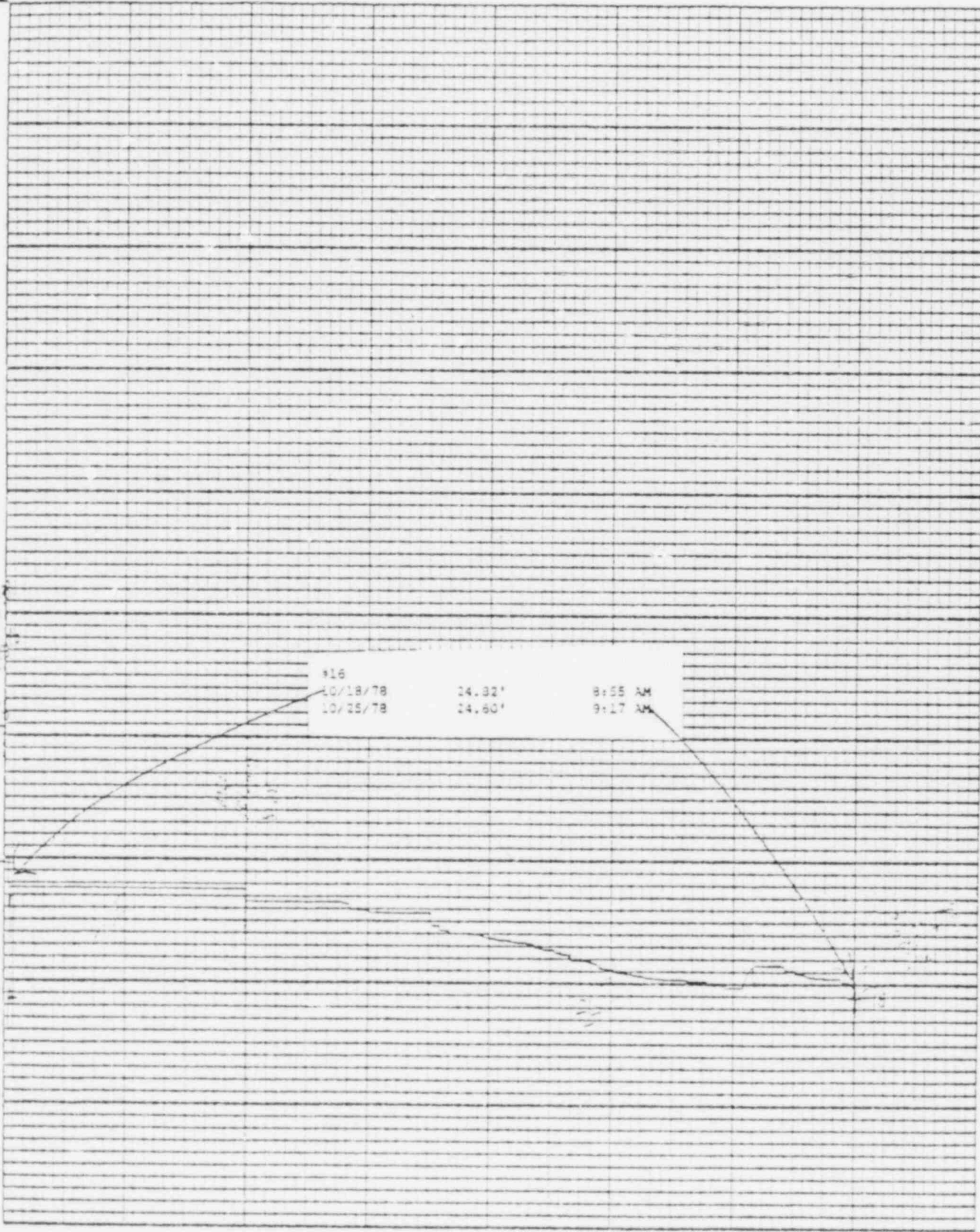
7

12



Printed in U.S.A.

Engineering & Surveying Inc. - Houston, Tex.



© 1994 by S. S. Krieger, Inc., New Haven, Conn.

Citation: *Wang et al.* 2016

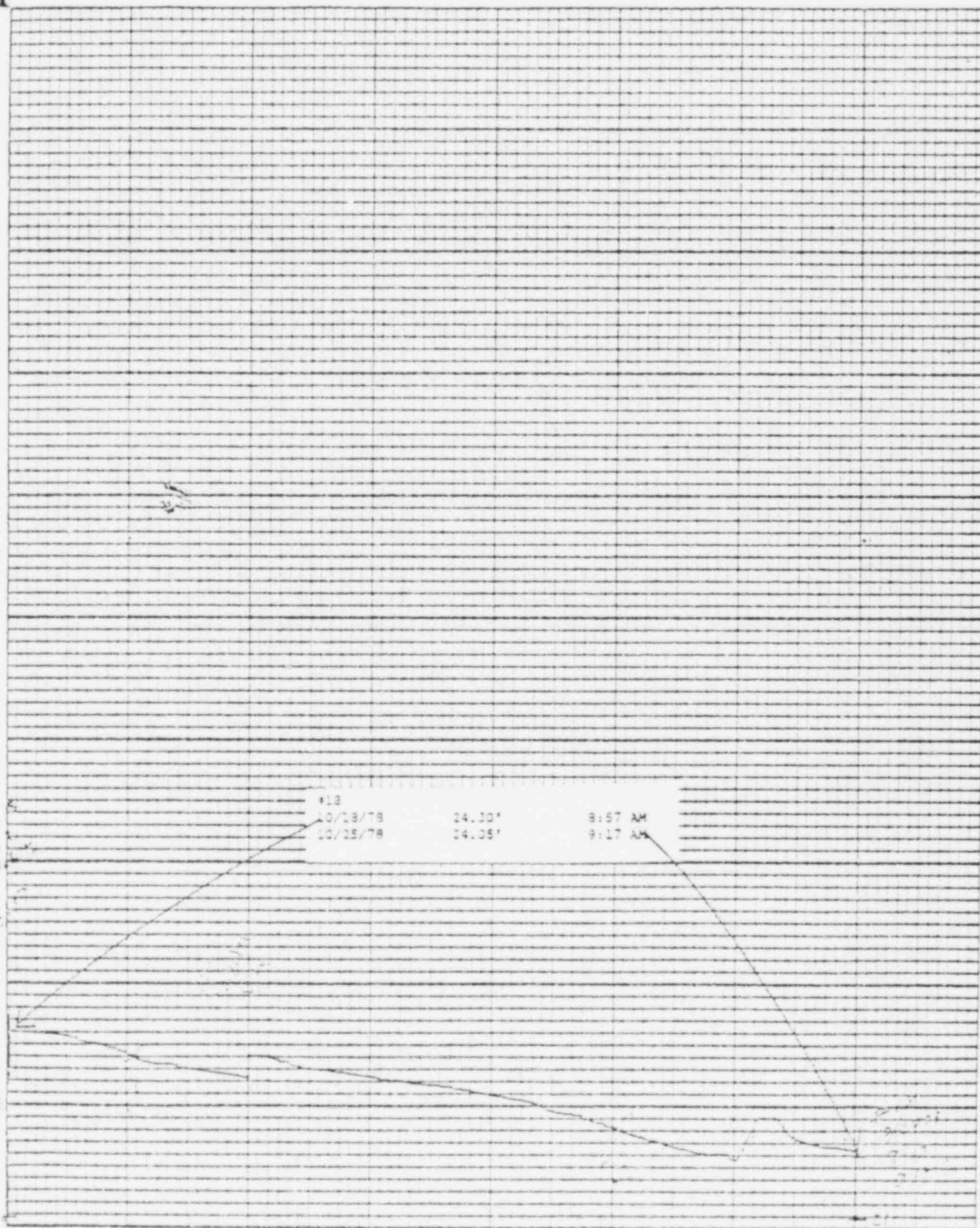
Stevens Water Level Recorder — Type 17

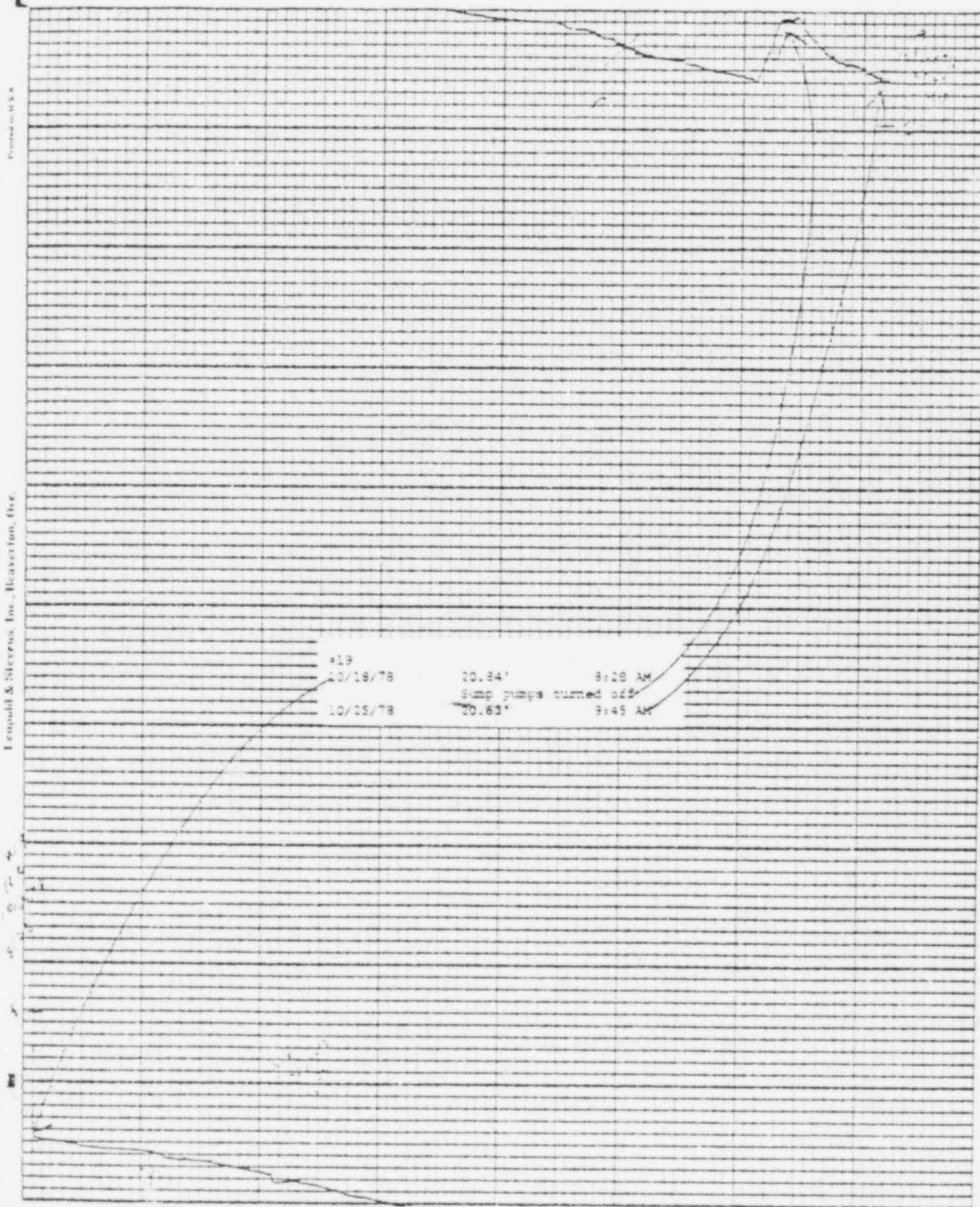
Printed on 11 x 14

Leopold & Stevens, Inc., Beaverlton, Ove

2

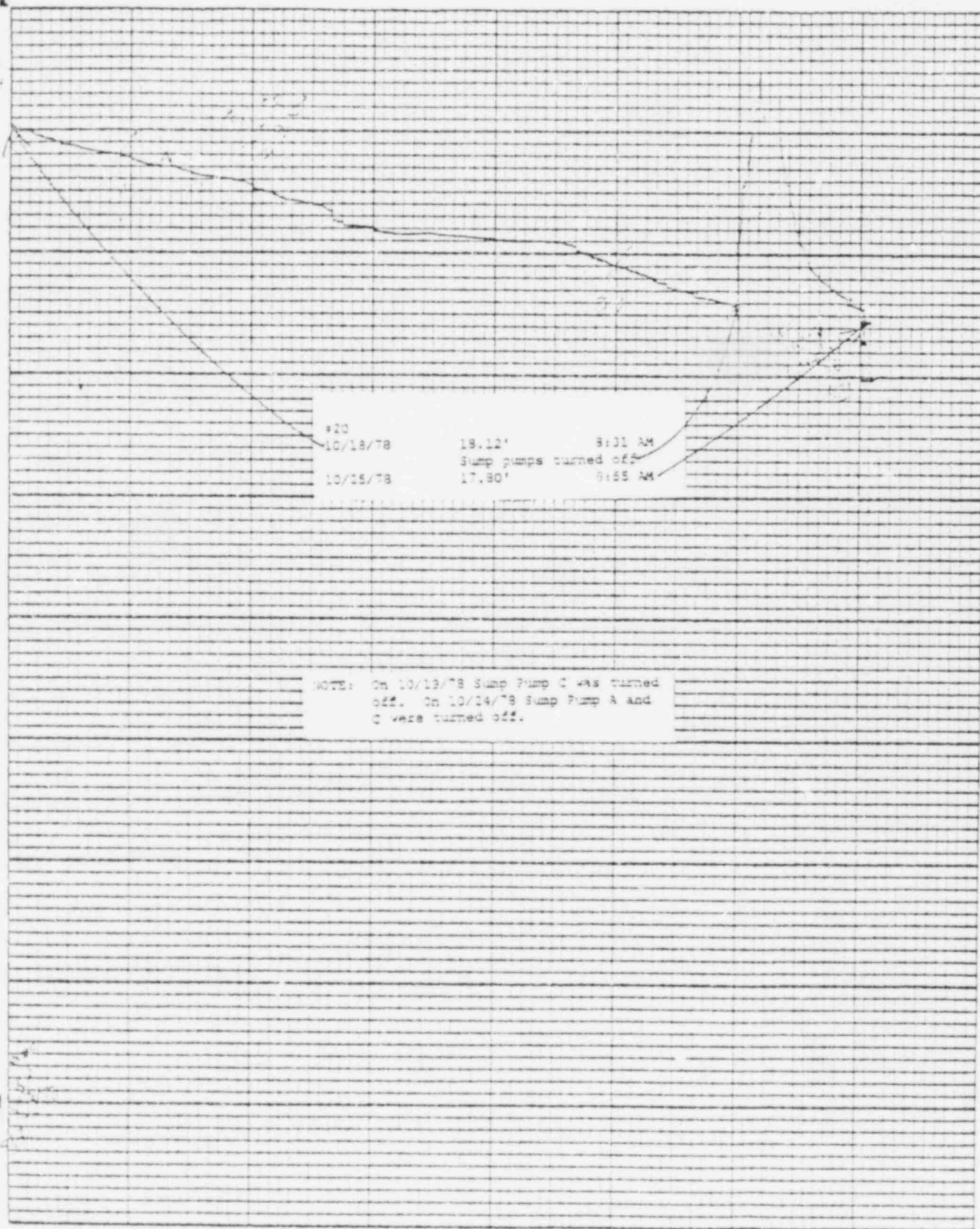
1



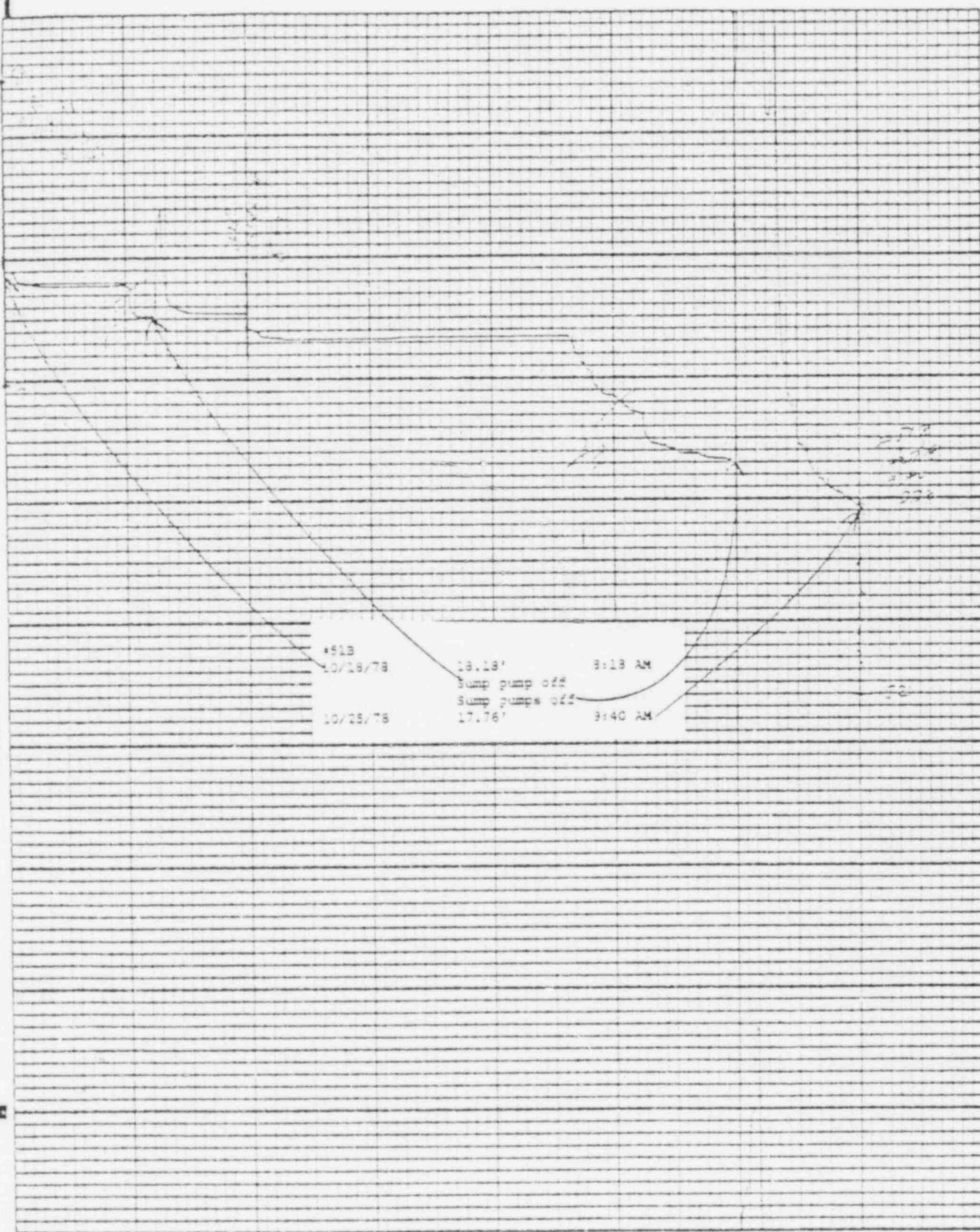
[illegible]

Sieve's Water Level Recorder — Type P

Chart F-1



Printed in U.S.A.



Stevens Water Level Recorder — Type B

Chen et al. 1997-10

Figure

Leopold & Stevens, Inc., Beaverton, Ore.

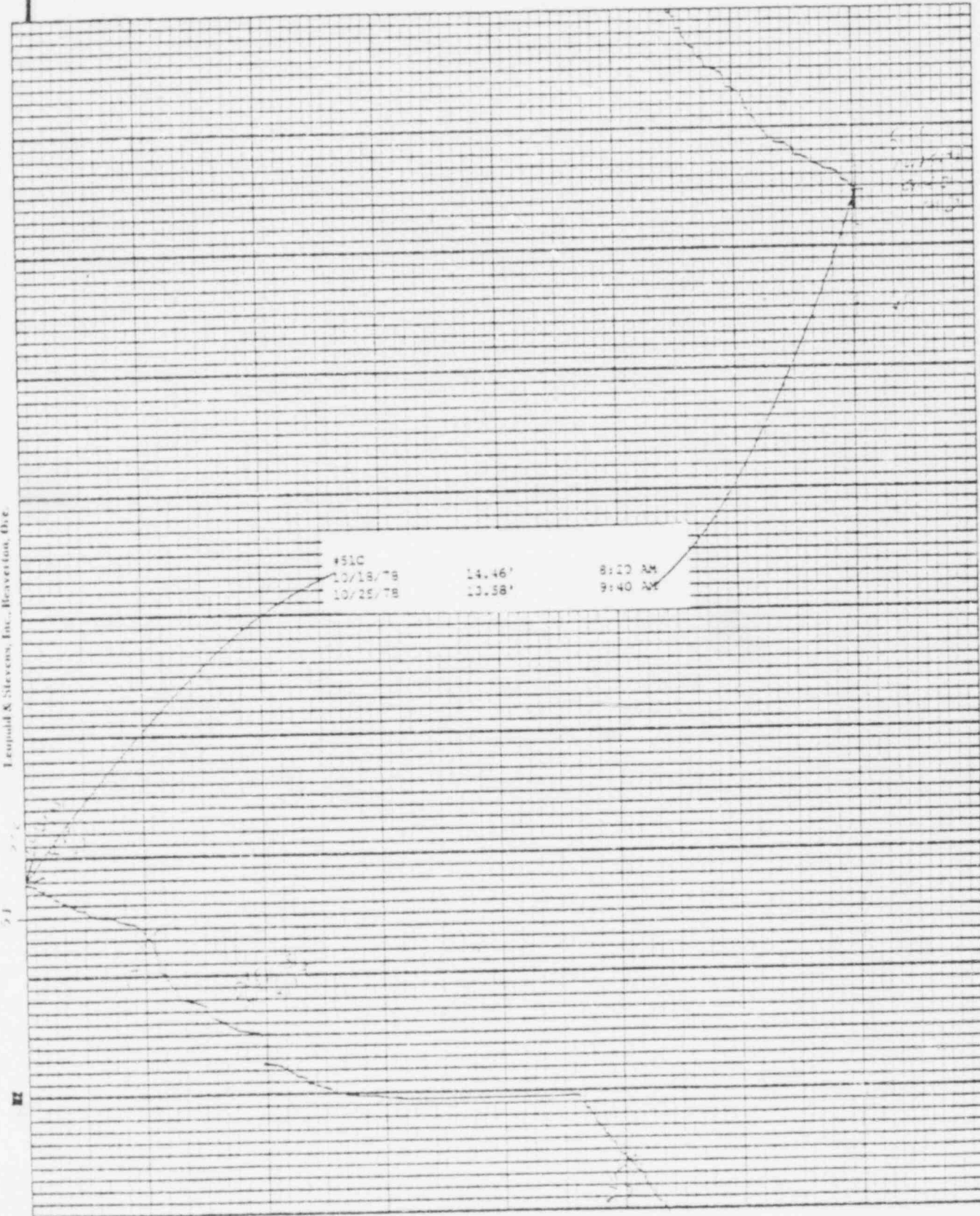
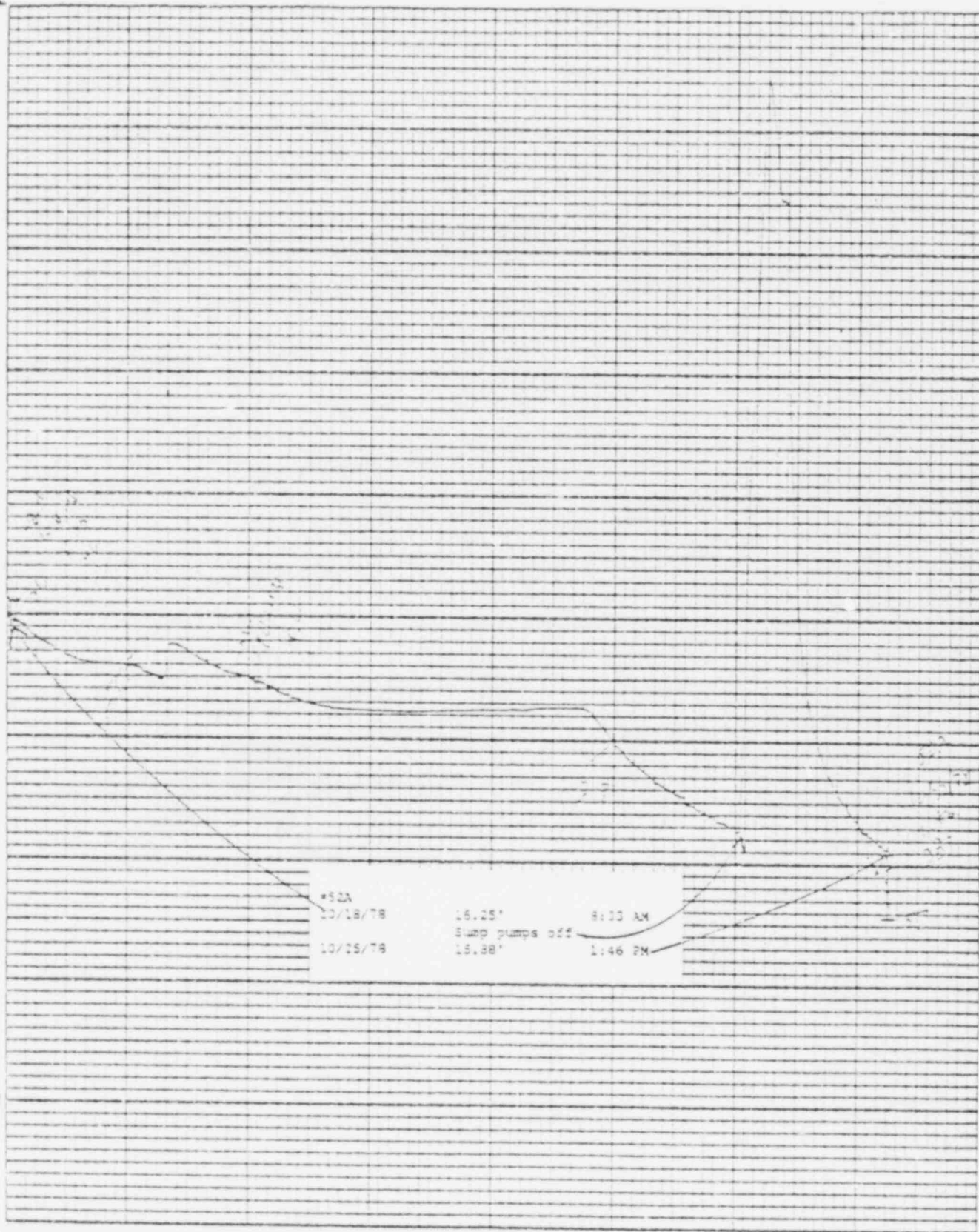


Chart P-1

Stevens Water Level Recorder - Type F

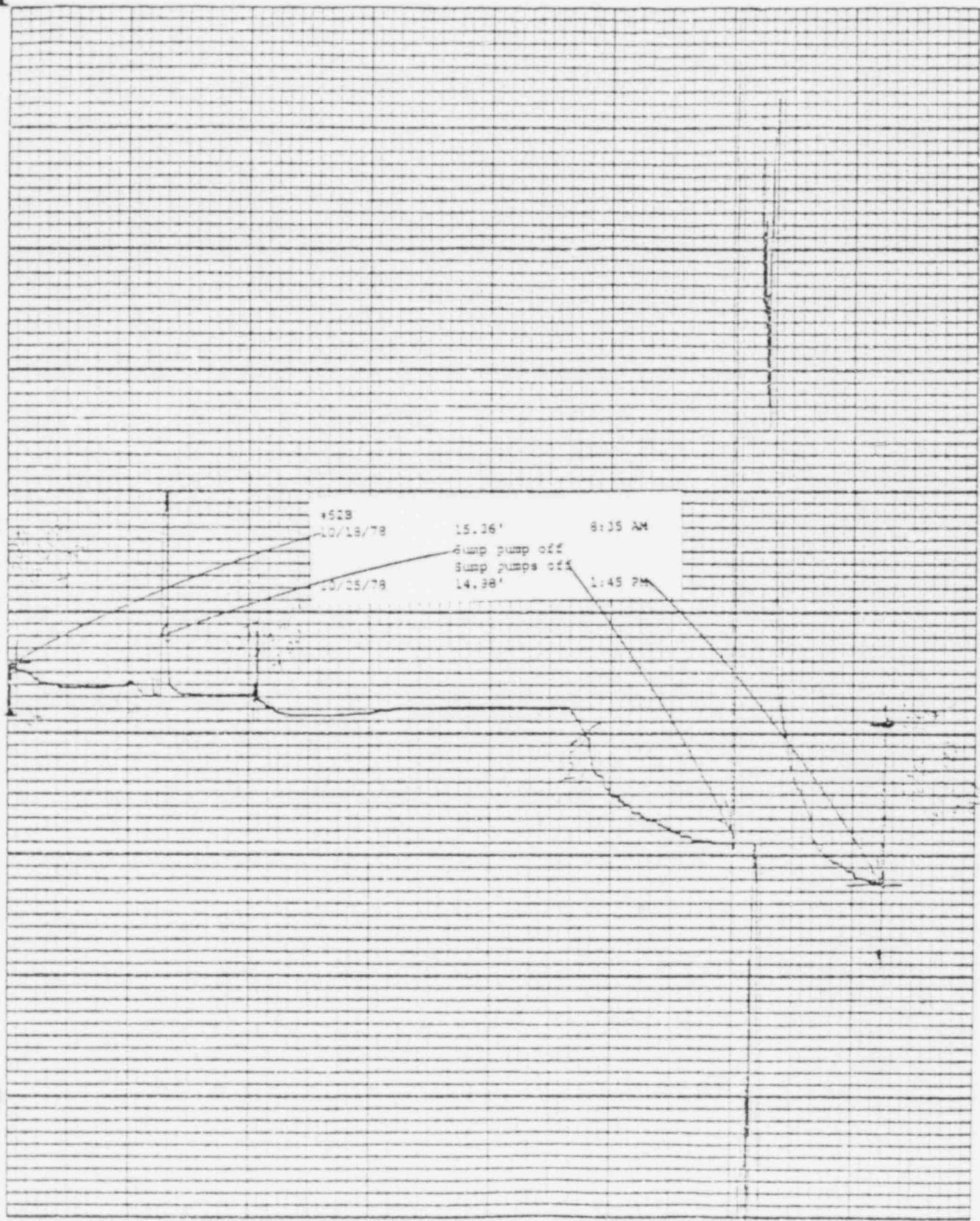
Leopold & Stevens, Inc., Beaverlton, Ore

Plotting on U.S.A.



Leopold & Stevens, Inc., Beaverton, Ore.

Form 100-10-1

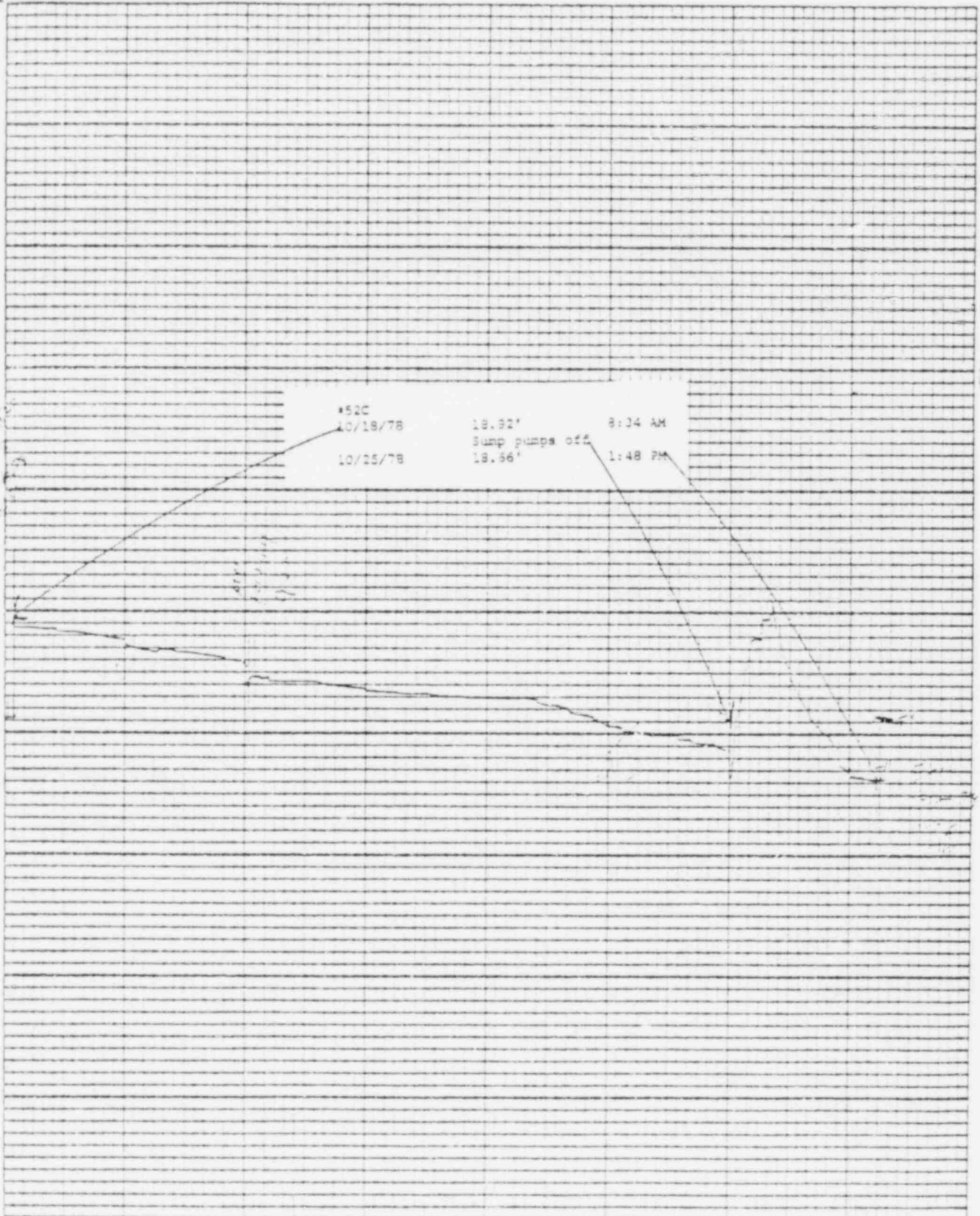


Stevens Water Level Recorder — Type F

Chart F-1

Printed on 10/5/8

Leupold & Stevens, Inc., Beaver Dam, Wis. 53001



Stevens Water Level Recorder - Type P

Chart F-1

Leopold & Stevens, Inc., Beaverton, Ore.

Point: 4A

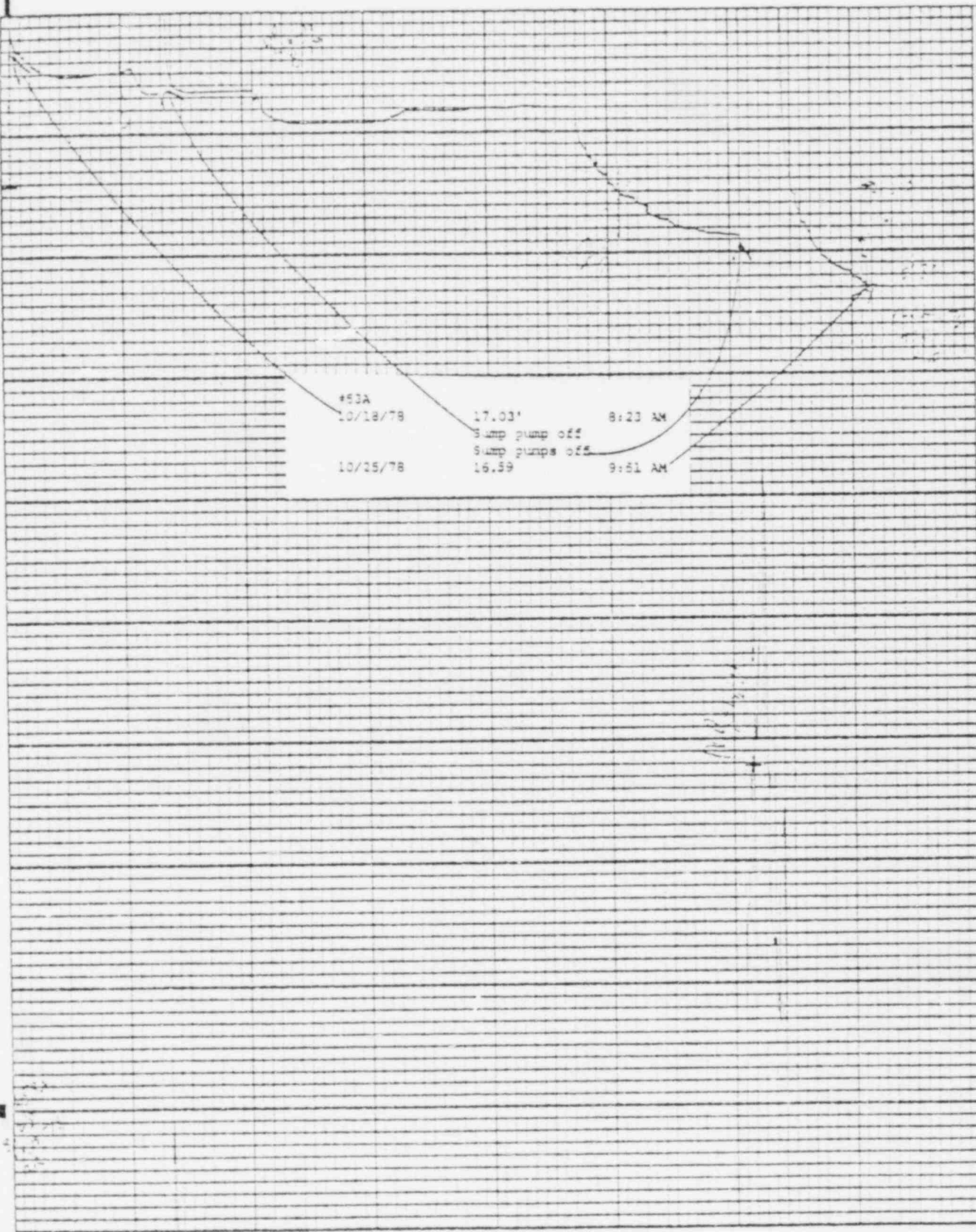
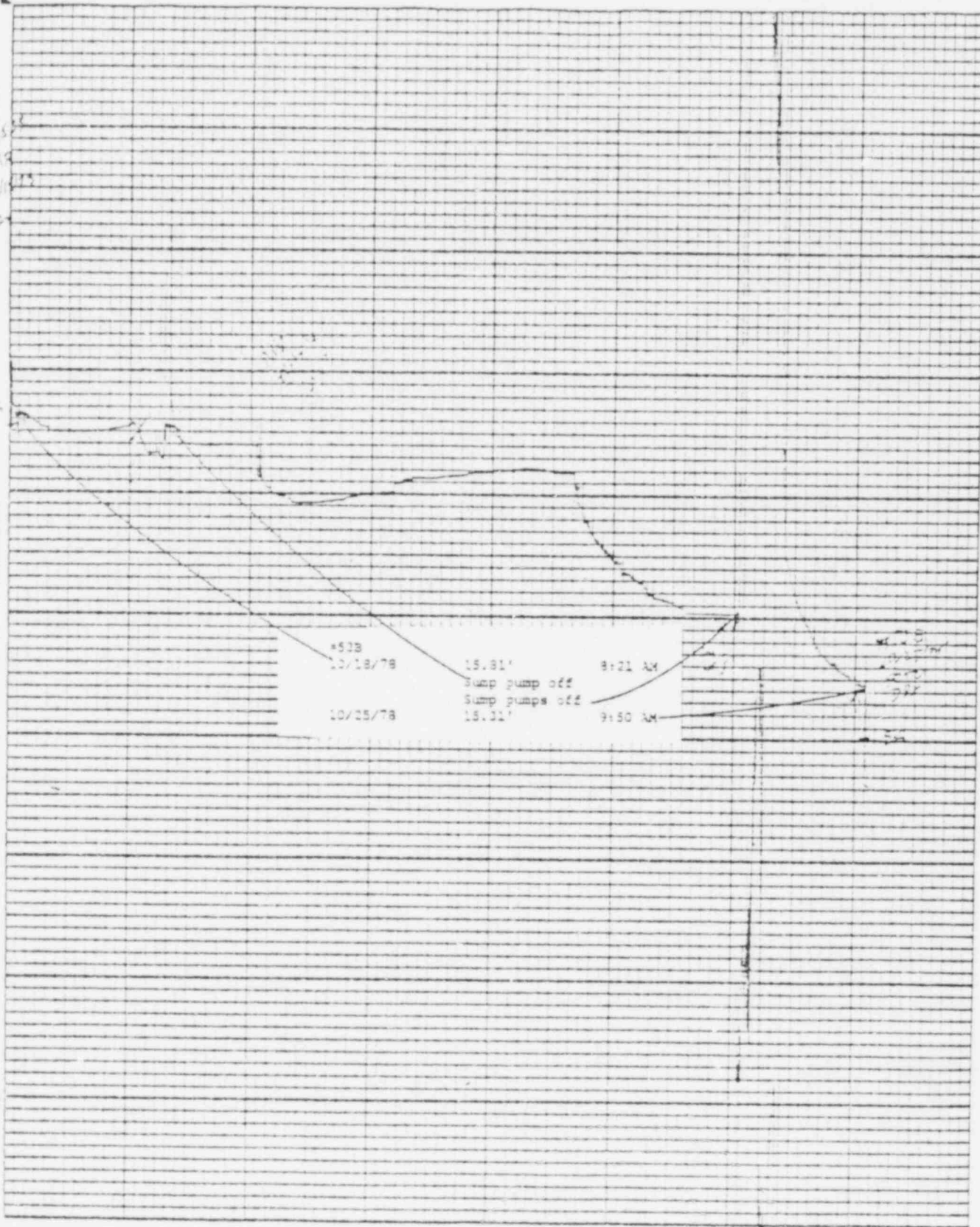


Chart P-1

Stevens Water Level Recorder - Type IV

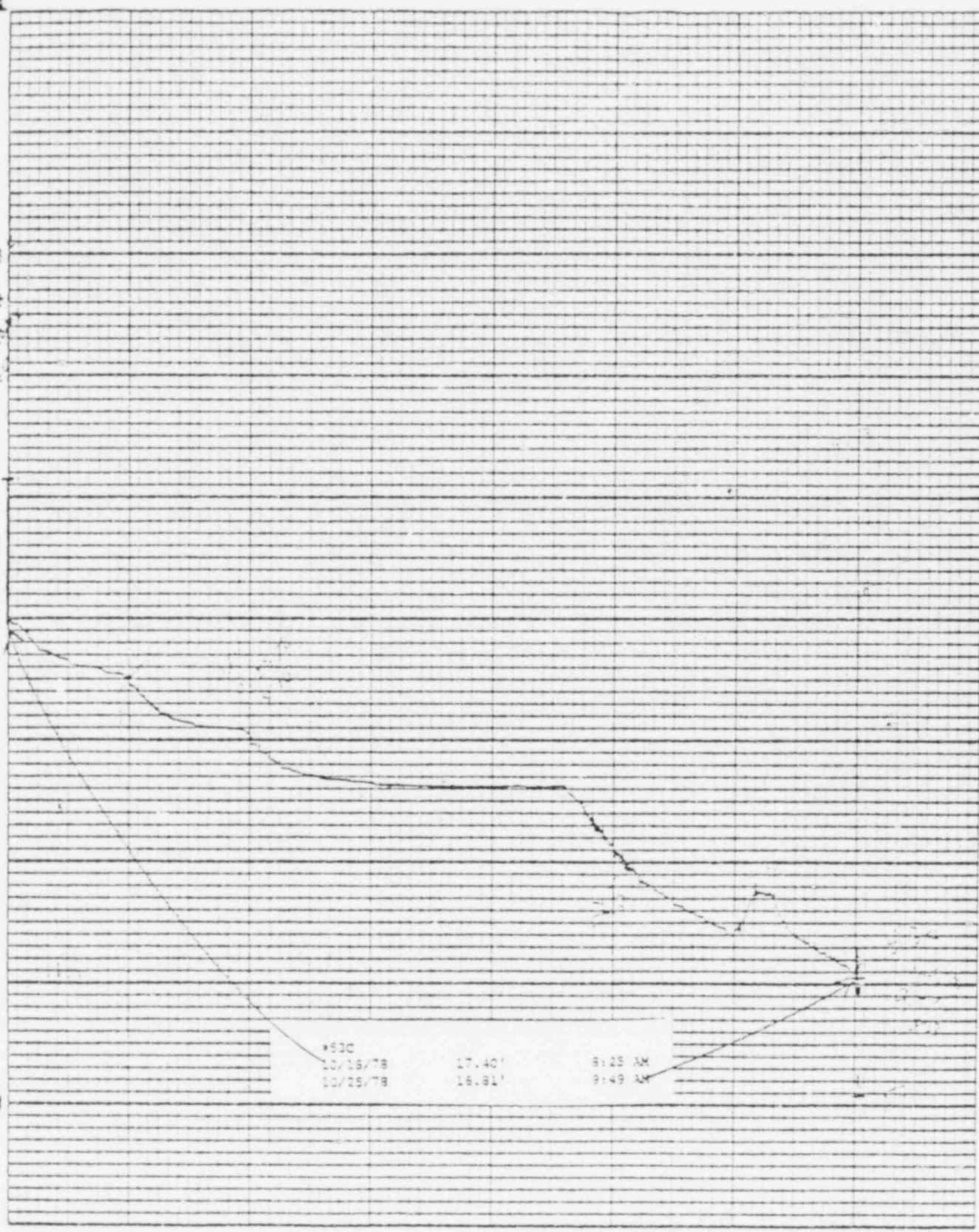
Lemond & Stevens, Inc., Beaverton, Ore.

Stevens

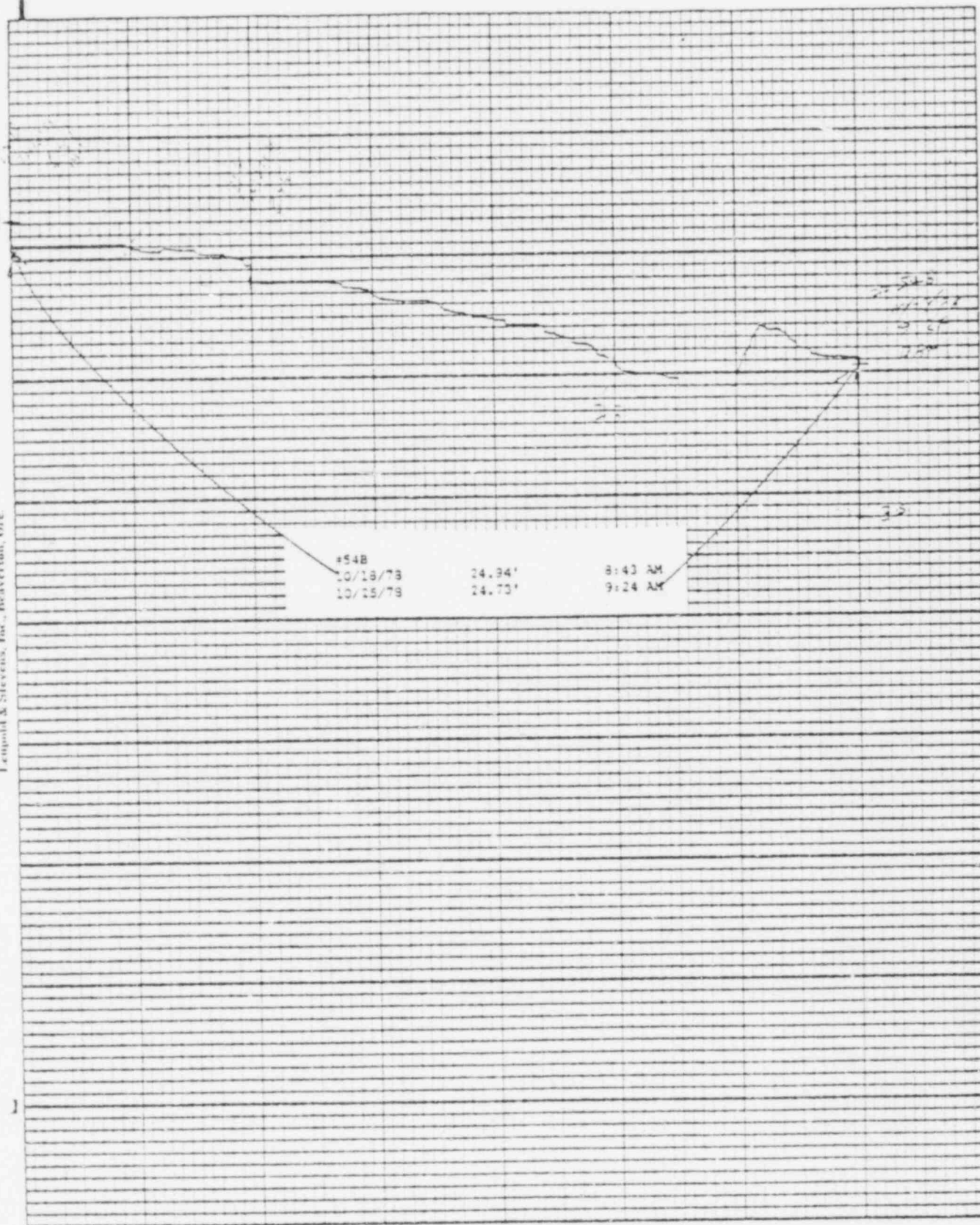


Printed in U.S.A.

Leopold & Stevens, Inc., Benavente, Ore.



Leopold & Stevens, Inc., Beaverton, Ore.



Leinhardt & Stevens, Inc., Haverton, Pa.

$$C_{\text{heat}} = 1$$

Stevens Water Level Recorder — Type K

Printed in U.S.A.

Leupold & Stevens, Inc., Beaverton, Ore.

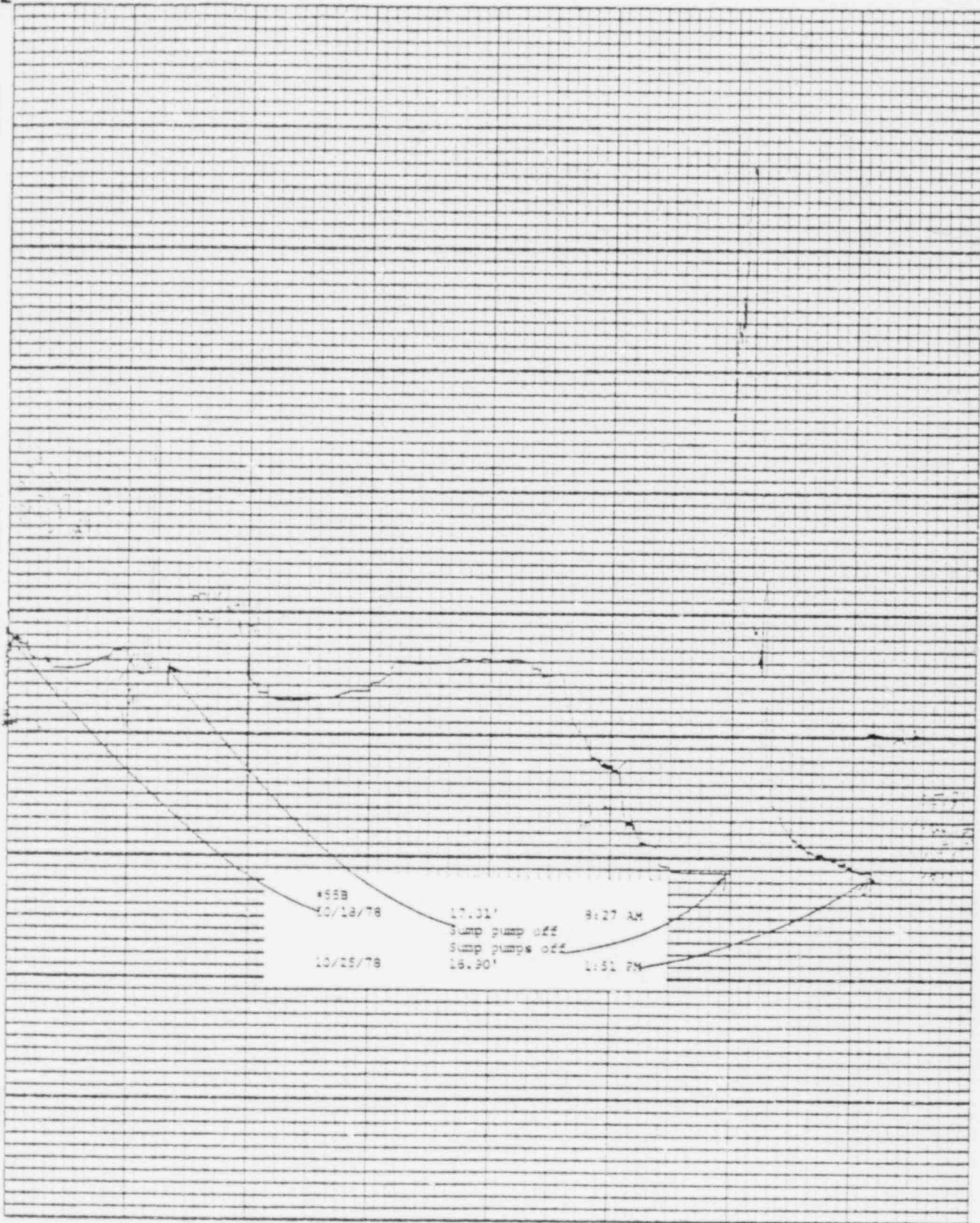
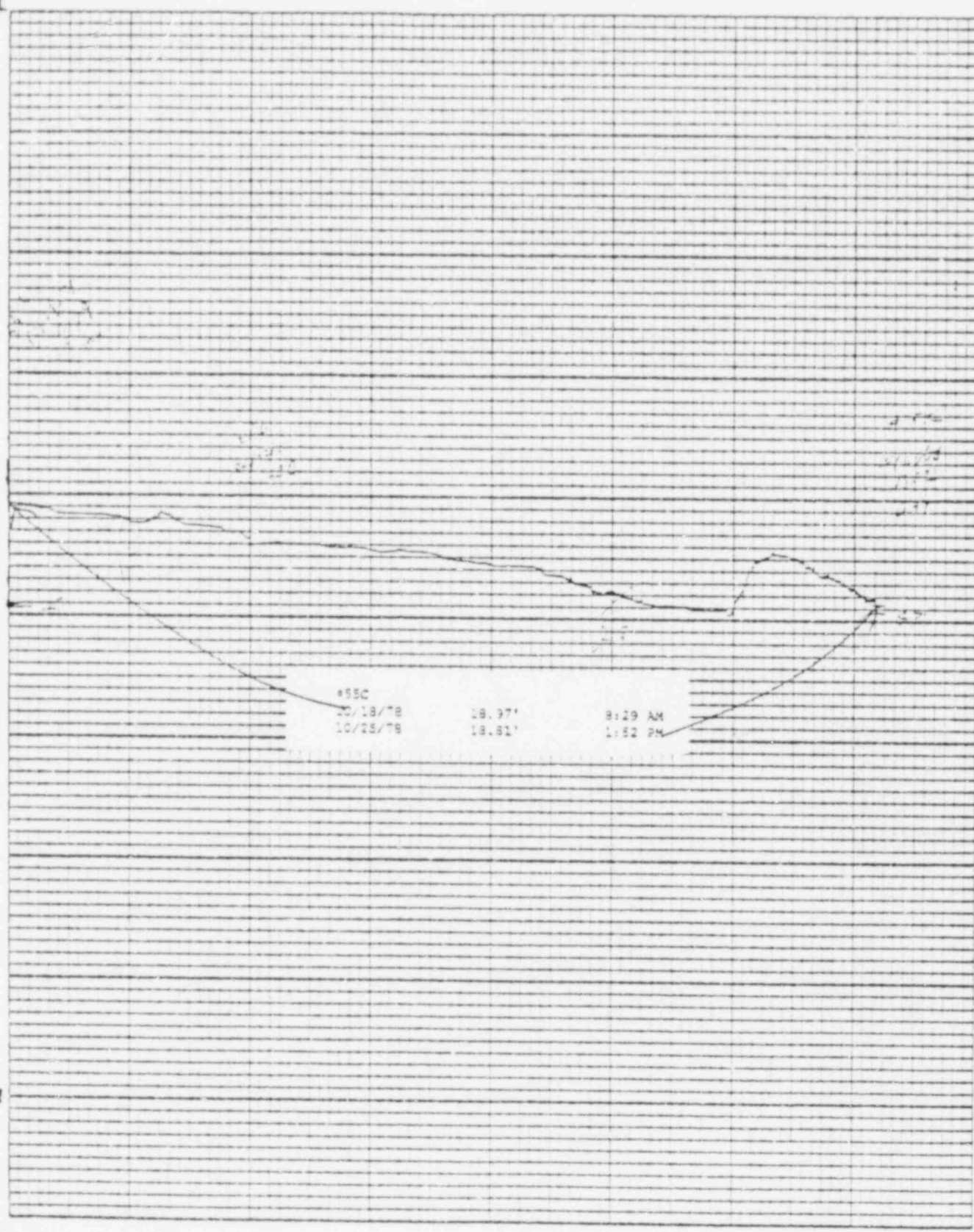


Chart F-1

Sievers Water Level Recorder — Type F

Printed on 11 x 17

Leopold & Stevens, Inc. Beaver, Ore.

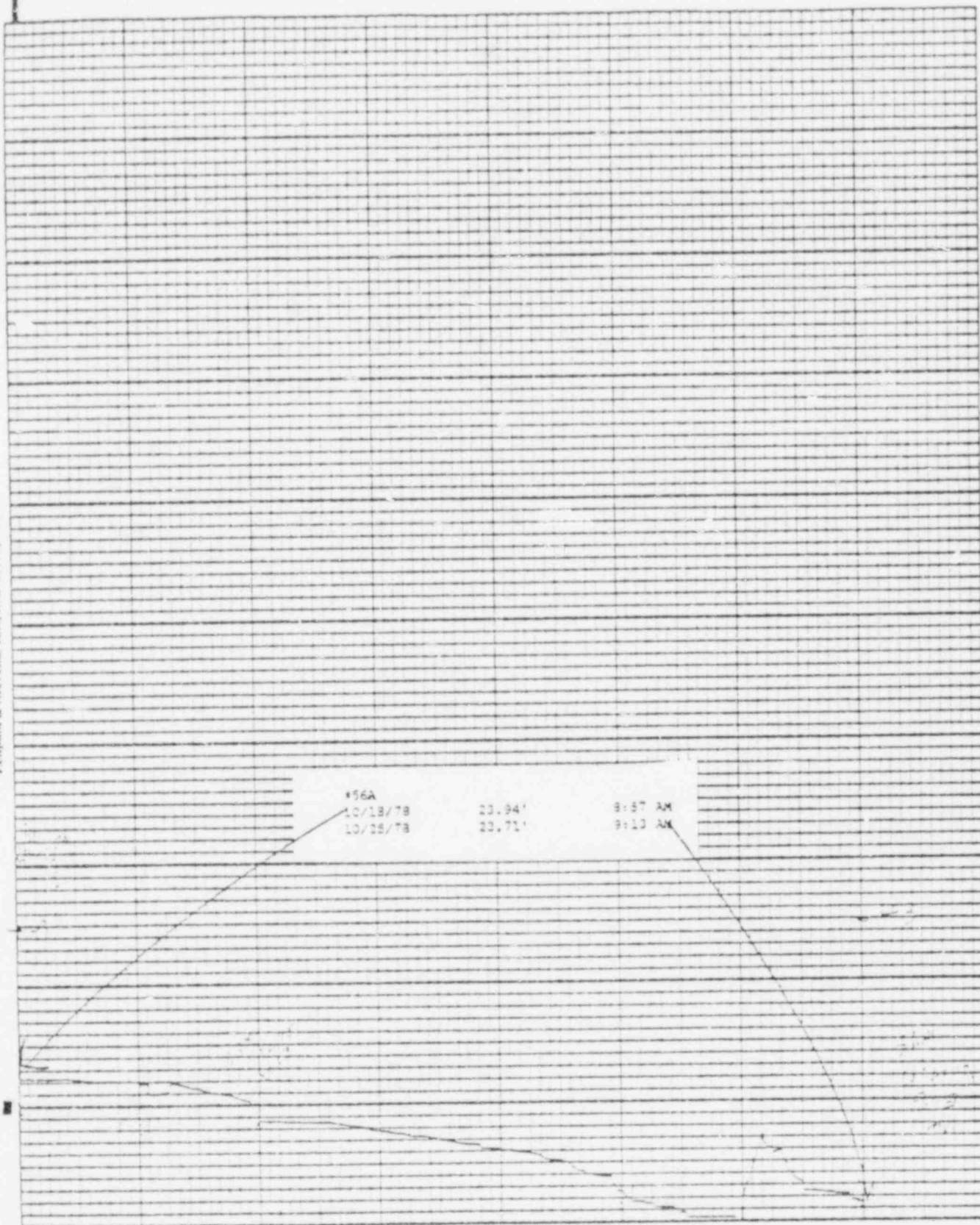


Stevens Water Level Recorder - Type F

Chart F-4

Langford & Stevens, Inc., Beaverton, Ohio

Form No. 1-A



Stevens Water Level Recorder - Type B

Chart P-1

Temple & Stevens, Inc., Beaverton, Ore.

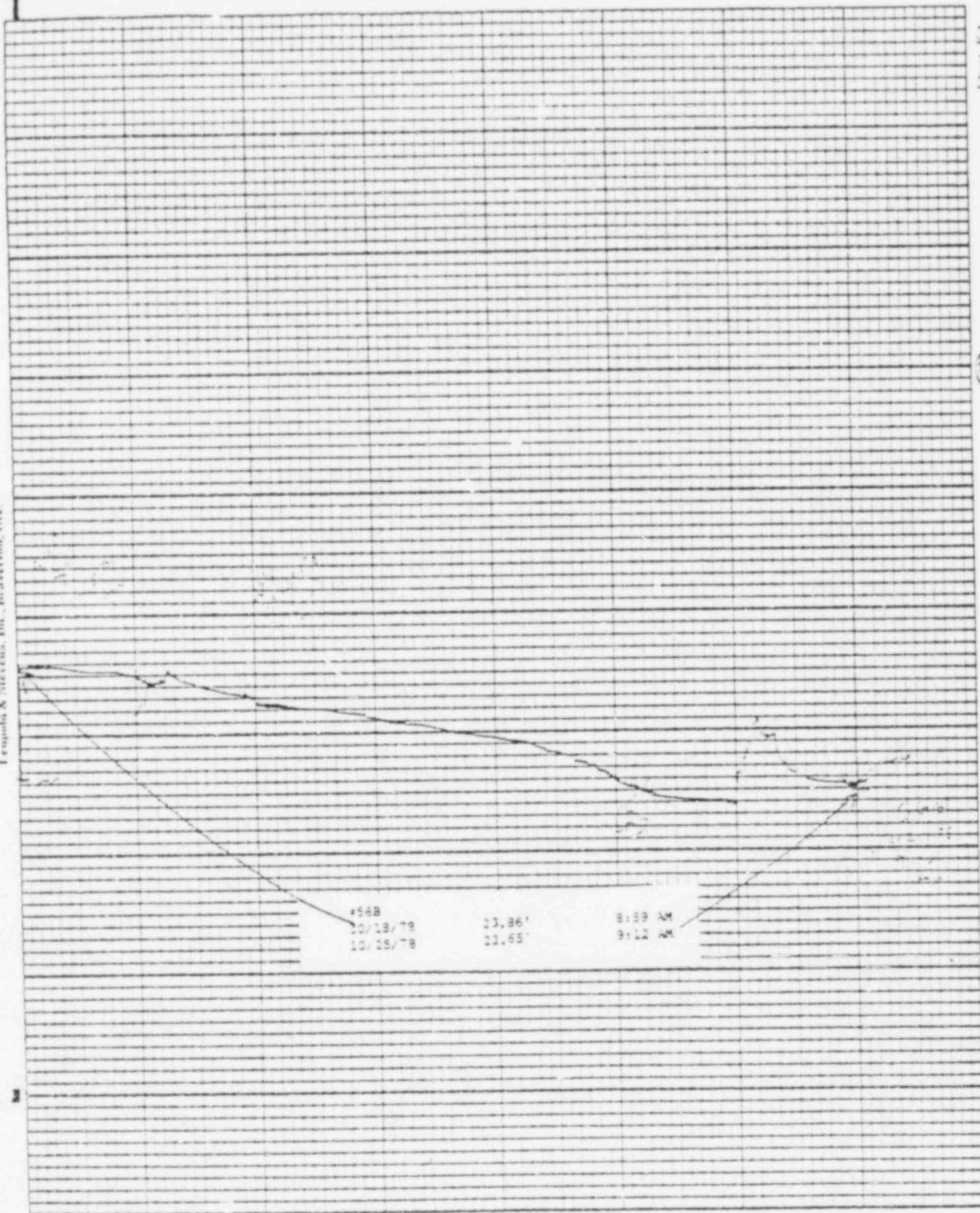
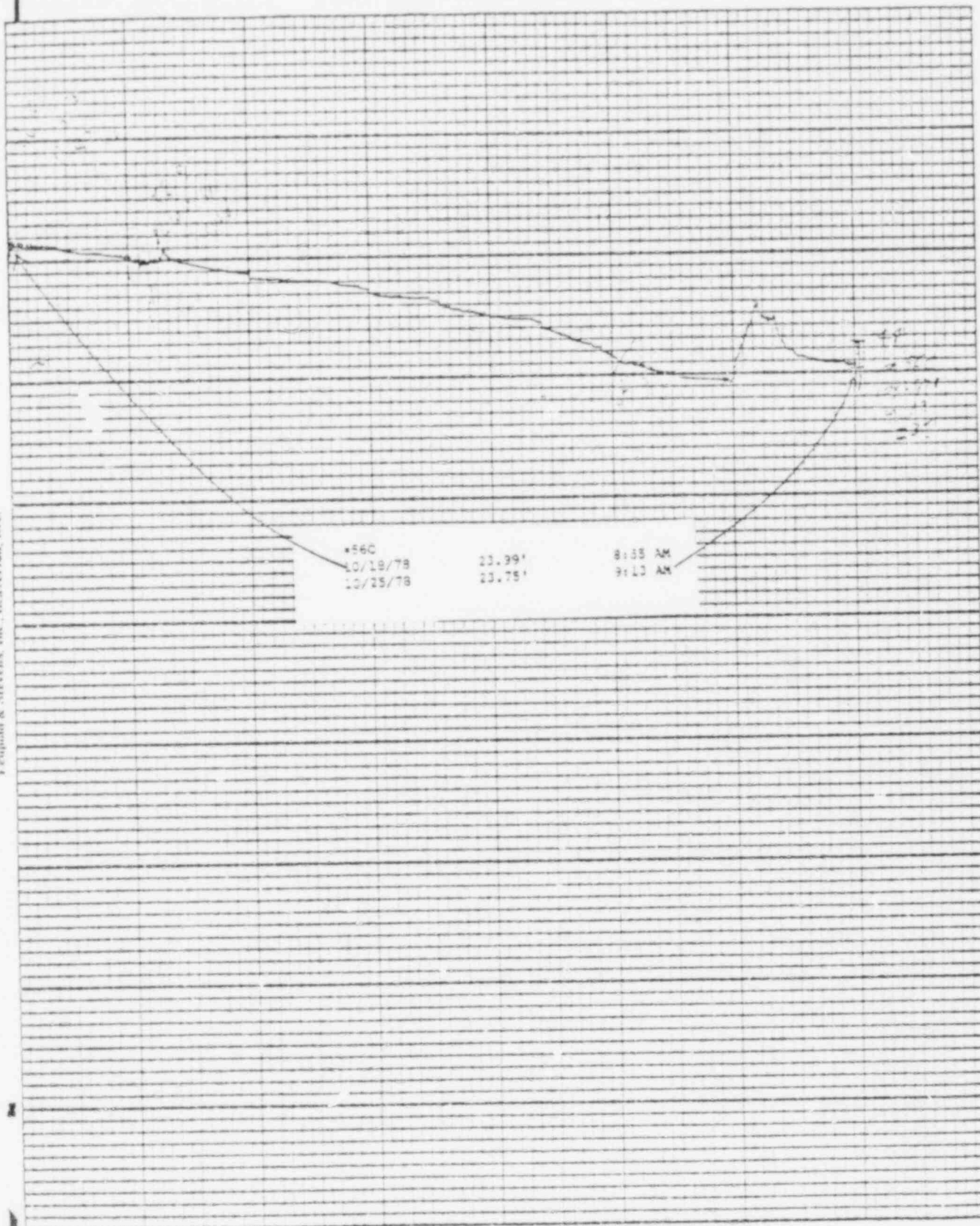


Chart F-1

Stevens Water Level Recorder — Type F

Leopold & Stevens, Inc., Heaverton, Ok.



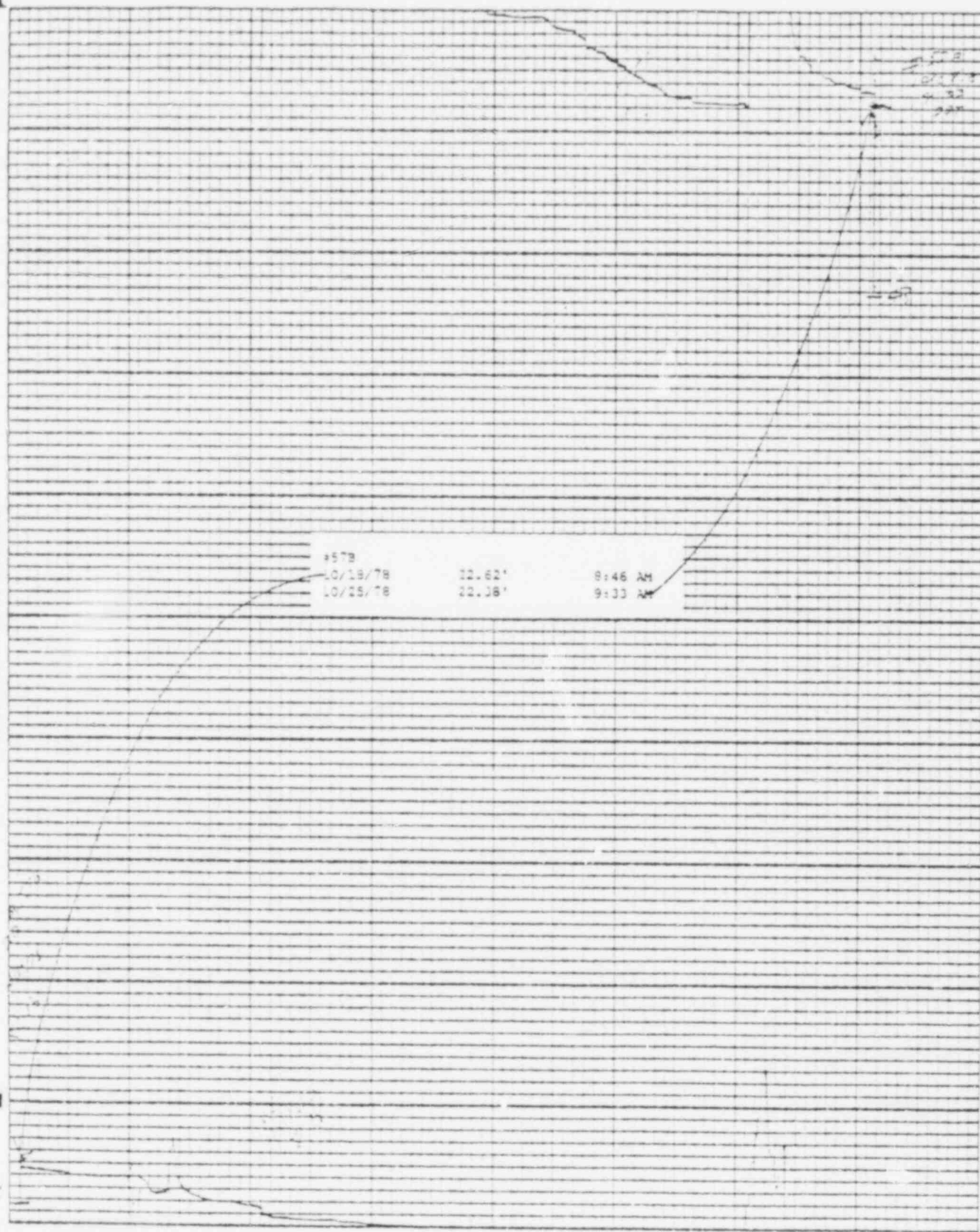
Stevens Water Level Recorder — Type F

(S)

Chart F-1

Leopold & Stevens, Inc., Beaverston, Ohio.

Patented in U.S.A.

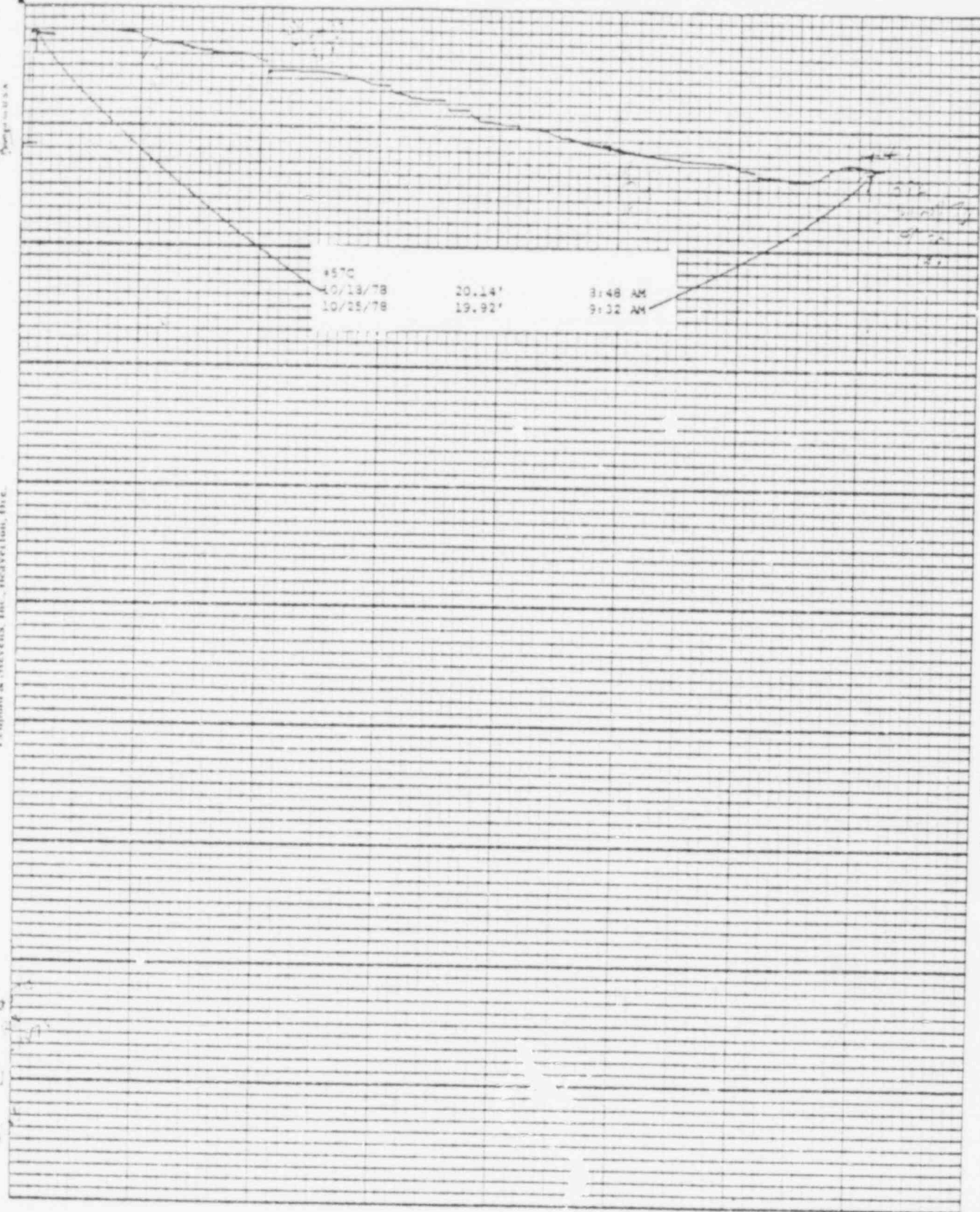


Stevens Water Level Recorder — Type B

Chart B-1

Leopold & Stevens, Inc., Healdsburg, Cal.

Page 1 of 1

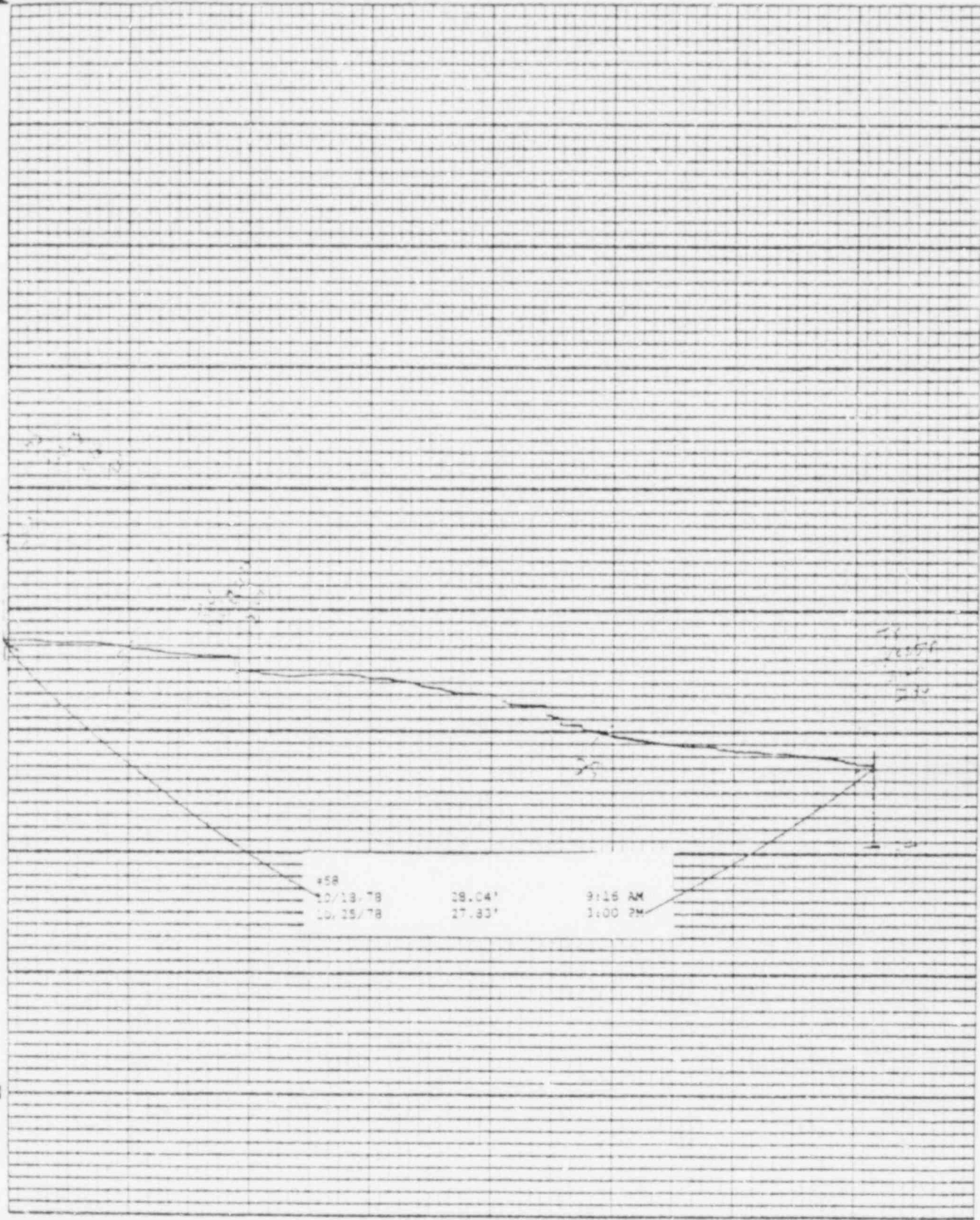


Stevens Water Level Recorder - Type F

Chart F-1

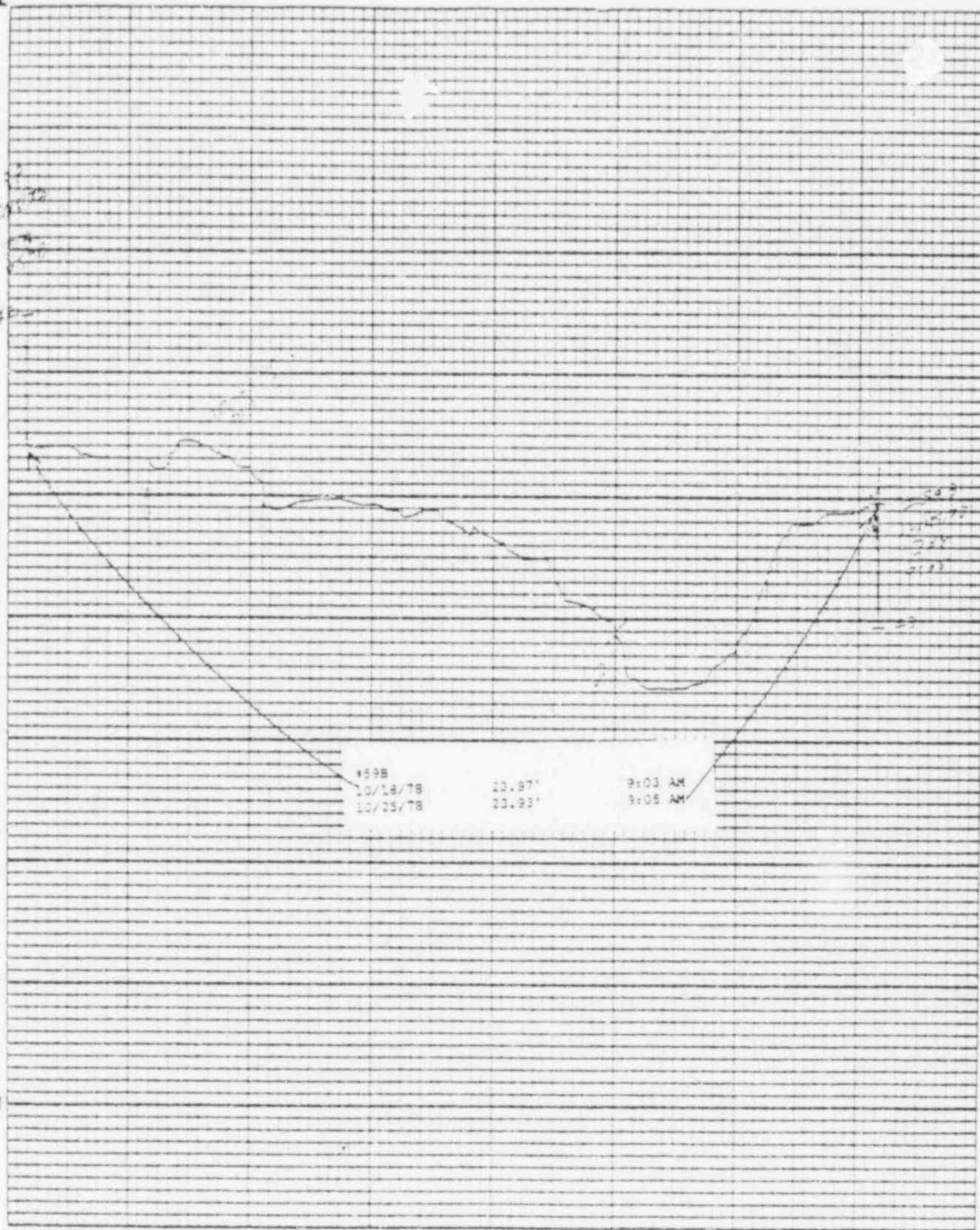
Printed on 10 x 8

Remond & Stevens, Inc., Bennington, Vt.



Leopold & Stevens, Inc., Beaverton, Ore.

Feet on U.S.A.



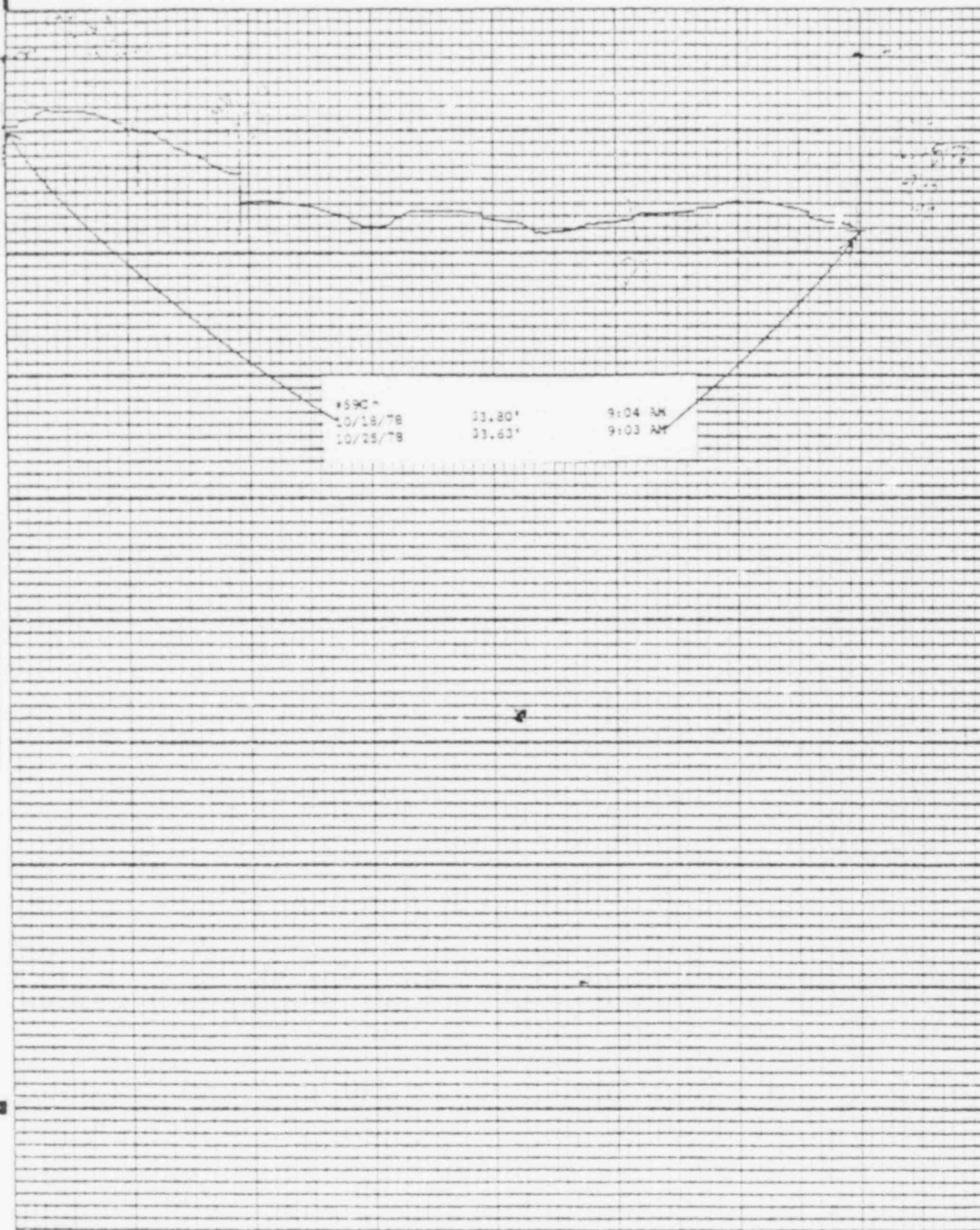
Stevens Water Level Recorder — Type P

(S)

Chart P-1

Leopold & Stevens, Inc., Benavente, Ore.

Printed in U.S.A.



POND LEVELS

<u>POND</u>	<u>10/26/78</u>
1	28.98'
2	30.54'
3	28.96'
4	24.02'
5	23.54'
6	33.26'
7	28.75'
8	DRY
9	28.49'
10	38.87'
11	40.07'
12	36.26'
13	37.03'

MD:lr
10/26/78

BAILLY WELLS WITHOUT RECORDERS

10/25/78

<u>WELL #</u>	<u>WATER ELEVATION IN FEET</u>
62	31.62
65	26.93
67	22.10
72	10.44
73	10.78
74	13.64

MD:lr
10/26/78

PNEUMATIC PRESSURE TRANSDUCERS

10/25/78

<u>TRANSDUCER</u>	<u>WATER ELEVATION IN FEET</u>
P-1	6.2
P-2	10.6
P-3	5.5
P-4	12.3
P-5	14.6
P-6	14.8

MD:lr
10/26/78

WATER METER READINGS

<u>DATE</u>	<u>TIME</u>	<u>METER READING (GALLONS)</u>	<u>INSTANTANEOUS FLOW RATE (GPM)</u>
<u>Sump Pump Discharge</u>			
10/19/78	8:23 AM	188028250	274
10/20/78	8:42 AM	188422100	277
10/23/78	8:02 AM	189596500	269

<u>Well Point Discharge</u>			
10/19/78	8:27 AM	585750	723
10/20/78	8:39 AM	864660	853
10/23/78	7:58 AM	1340500	359

MD:lr
10/26/78