



Northern Indiana Public Service Company

Nuclear Staff
RR #3, Box 501
Chesterton, IN 46304
October 6, 1978

BAILLY GENERATING STATION N-1

Mr. Ronald Ballard
Environmental Projects Branch No. 1
Directorate of Licensing
U.S. Nuclear Regulatory Commission
Washington D.C. 20545

RE: NORTHERN INDIANA PUBLIC SERVICE COMPANY
BAILLY GENERATING STATION NUCLEAR 1
DOCKET 50-367

Dear Mr. Ballard:

Enclosed herewith are ten (10) copies of the following:

1. Well charts for 9/20/78 - 9/27/78
2. Bailly Wells Without Recorders for 9/27/78
3. Water meter readings for 9/21/78 and 9/25/78,
pond levels for 9/27/78
4. Pneumatic Pressure Transducers for 9/27/78
5. Rainfall Flint Lake Pump Station 8/17/78 - 9/27/78
6. Lake Michigan Levels 8/15/78 and 9/1/78

Sincerely,

R. J. Bohn
Manager, Nuclear Staff

MD/me

Enclosures

File: Ground Water Observation Monitoring Wells

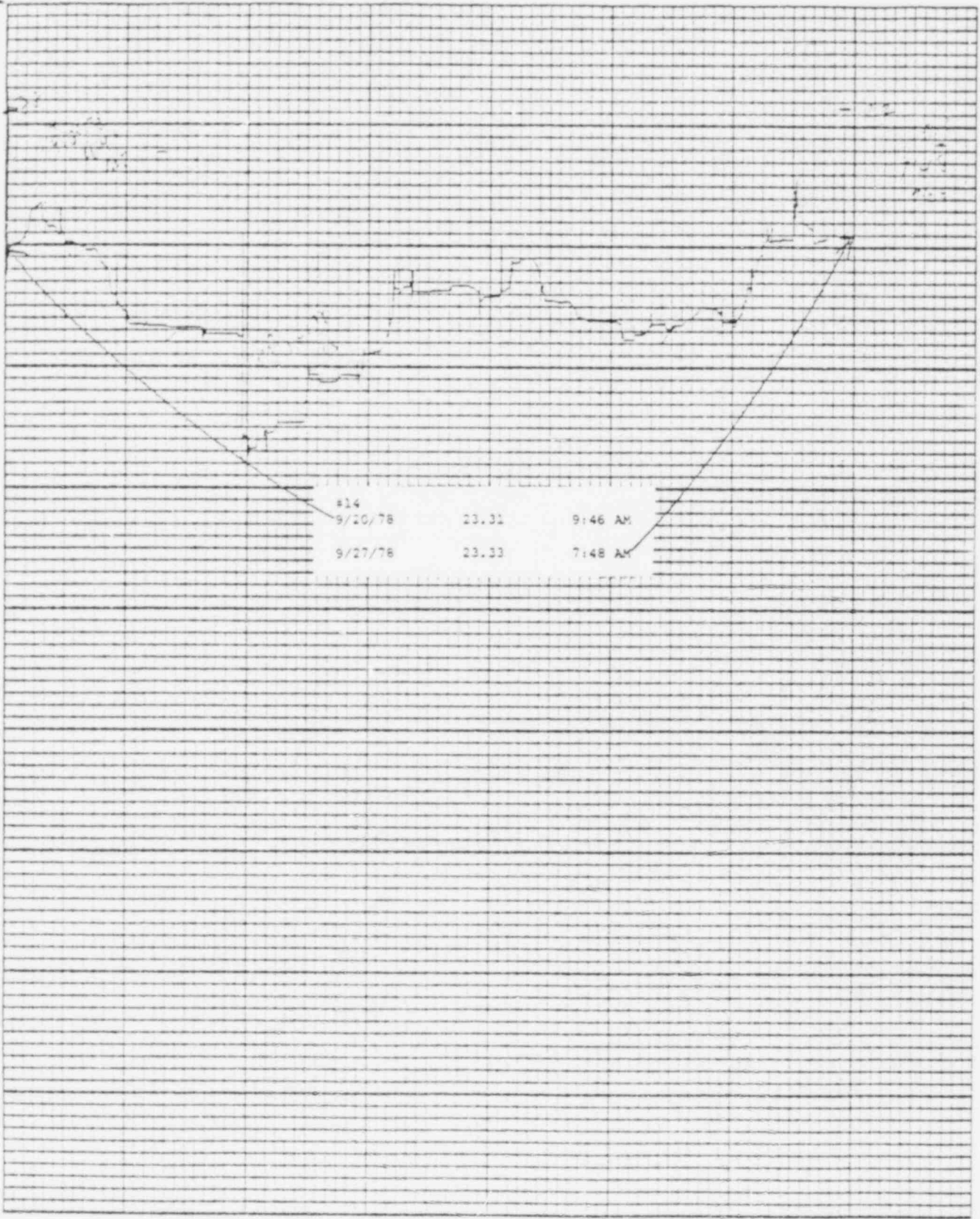
ADD HULMAN

7810160136 A

DOOY/ES *
1/10

Lemuel & Stevens, Inc., Beaver Dam, Wis.

Printed on 11 x 17



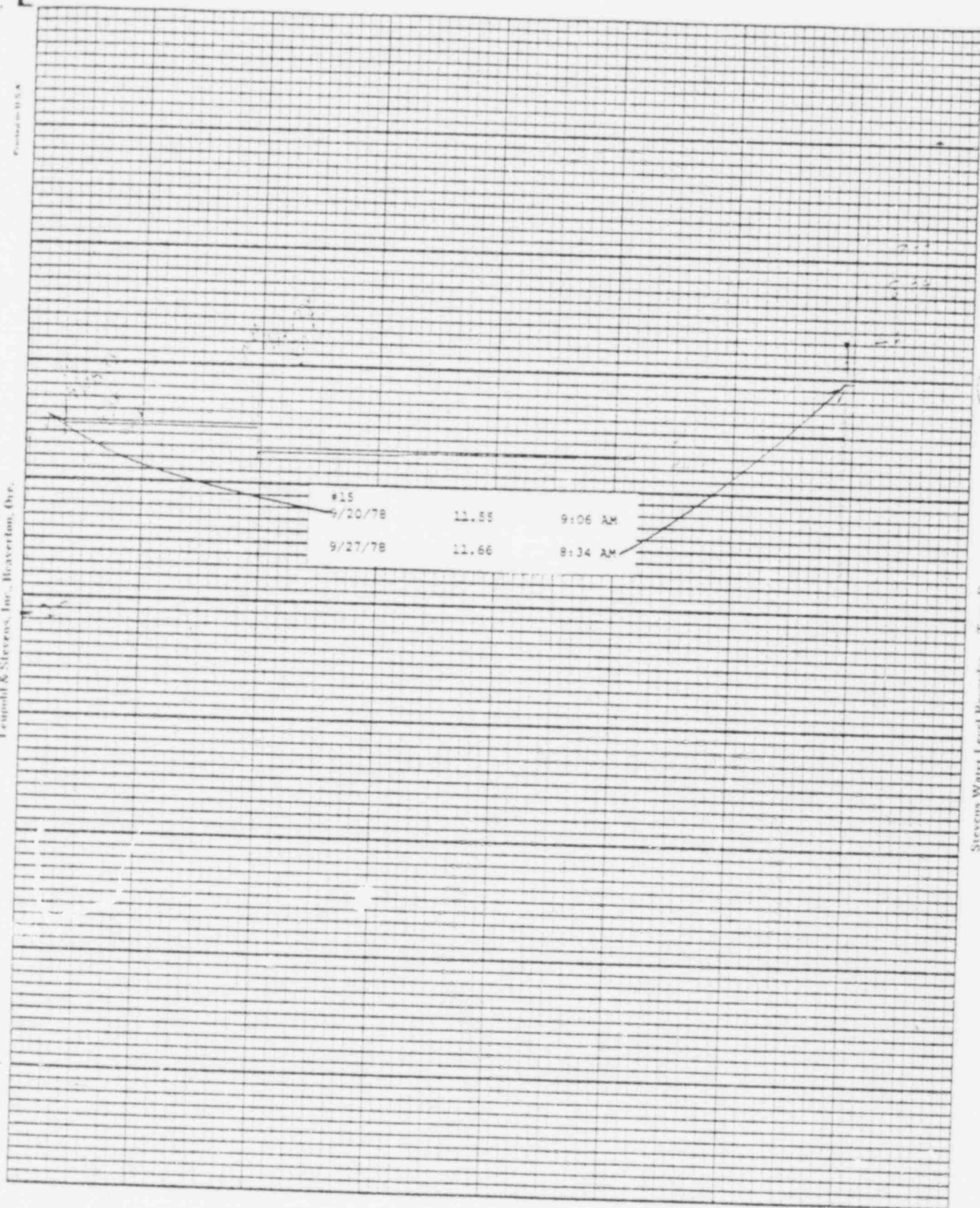
#14		
9/20/78	23.31	9:46 AM
9/27/78	23.33	7:48 AM

Stevens Water Level Recorder - Type B

Chart F-1

Leupold & Stevens, Inc., Beaverlton, Ore.

Printed in U.S.A.



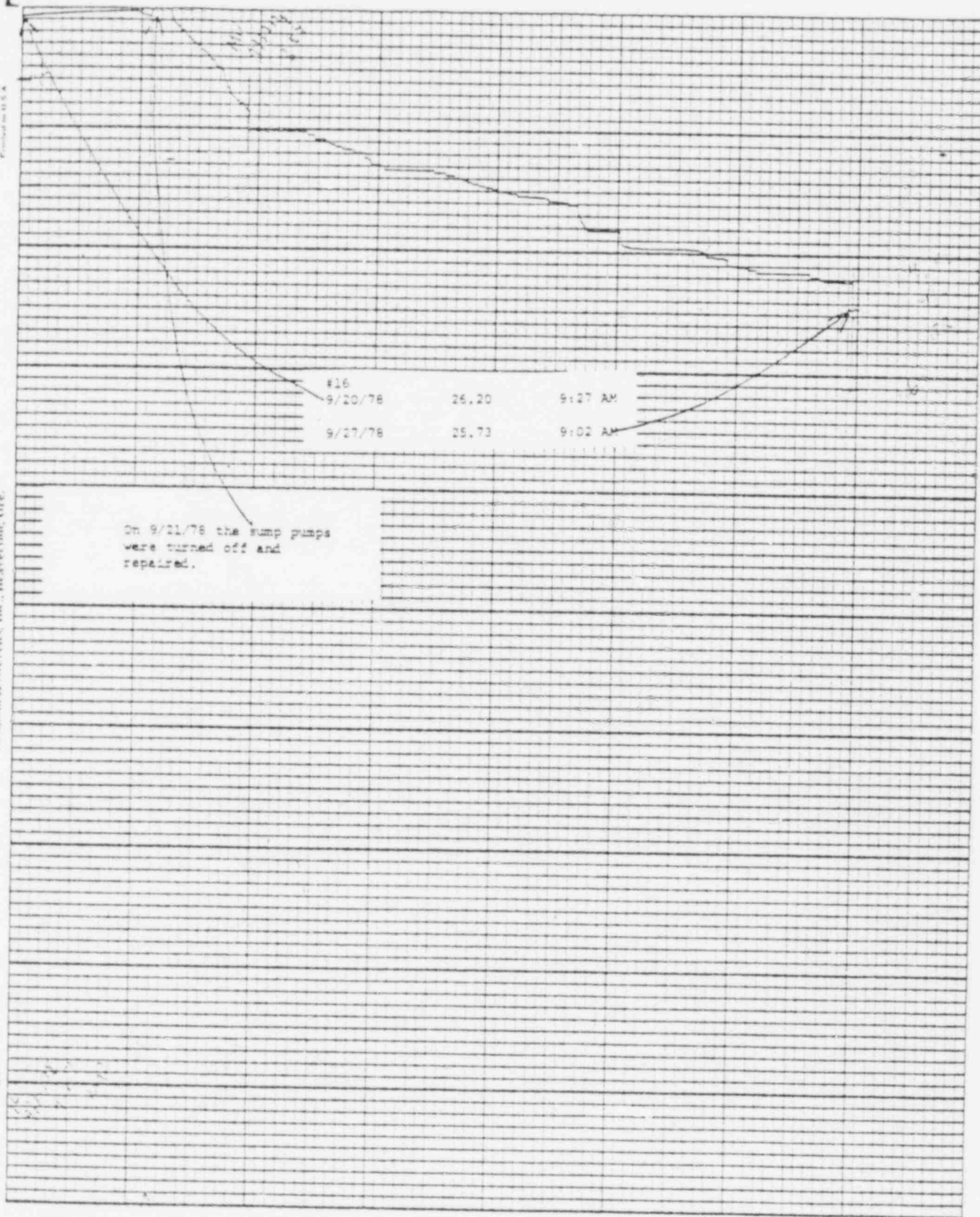
Stevens Water Level Recorder — Type F



Chart F-1

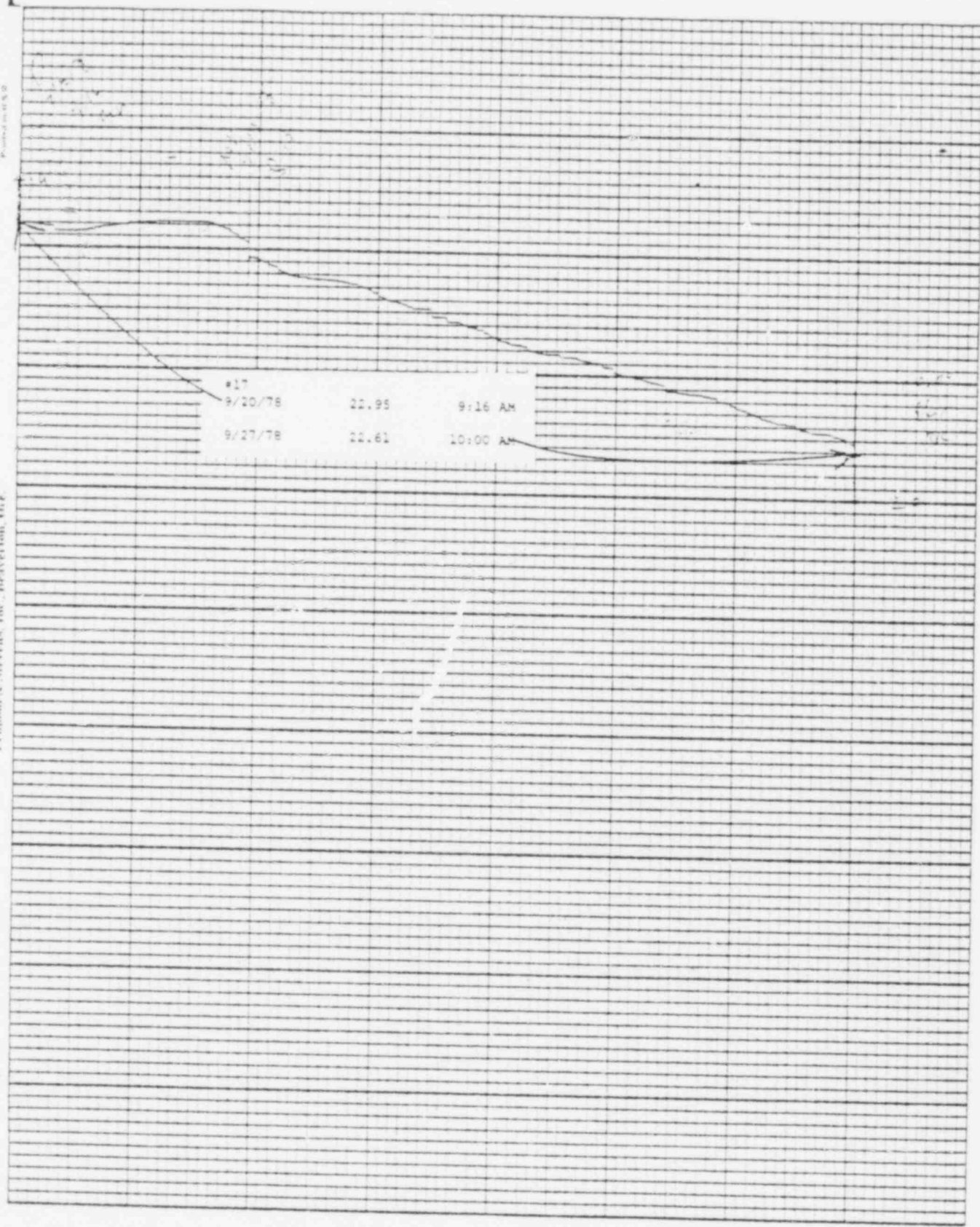
Troubleshoot & Stevens, Inc., Beaverton, Ore.

Printed on 11 x 14



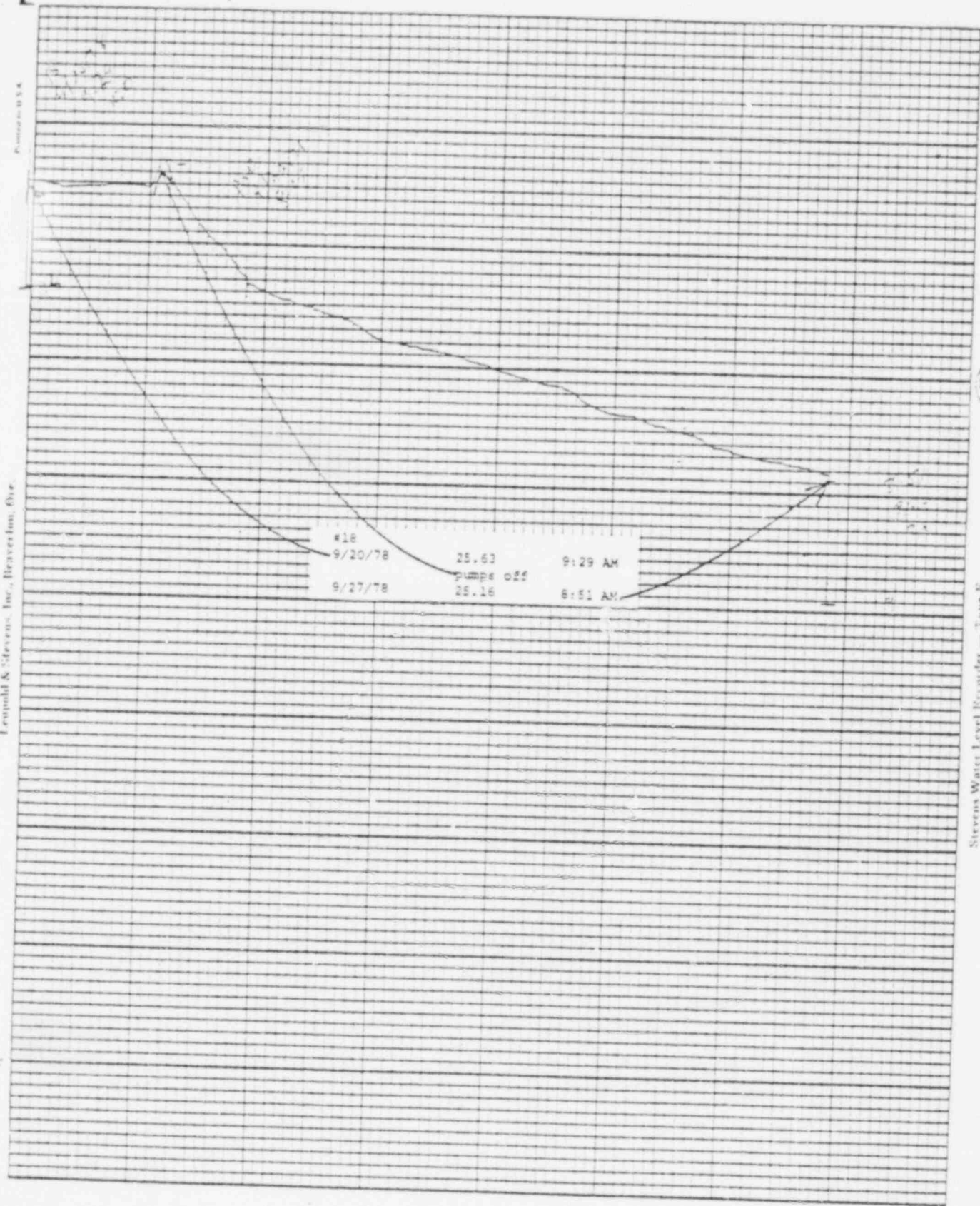
Postmarked 9/20

Fennell & Stevens, Inc., Houston, Tex.



Leonard & Stevens, Inc., Beaver Dam, Wis.

Printed in U.S.A.



Stevens Water Level Recorder — Type F

Chart F-1

Printed on U.S.A.

Ernst & Stevens, Inc. - Haverhill, Ore.

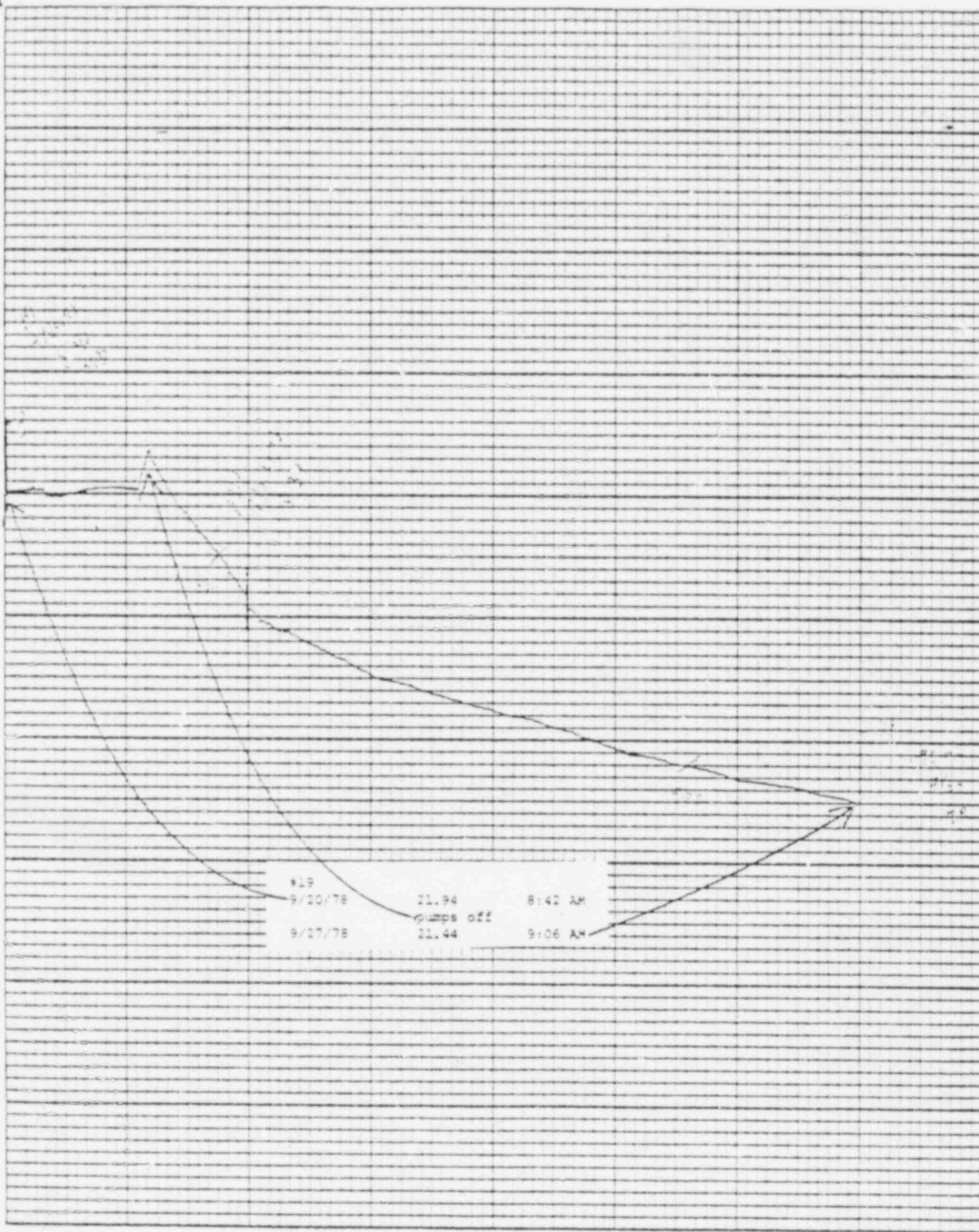


Chart P-4

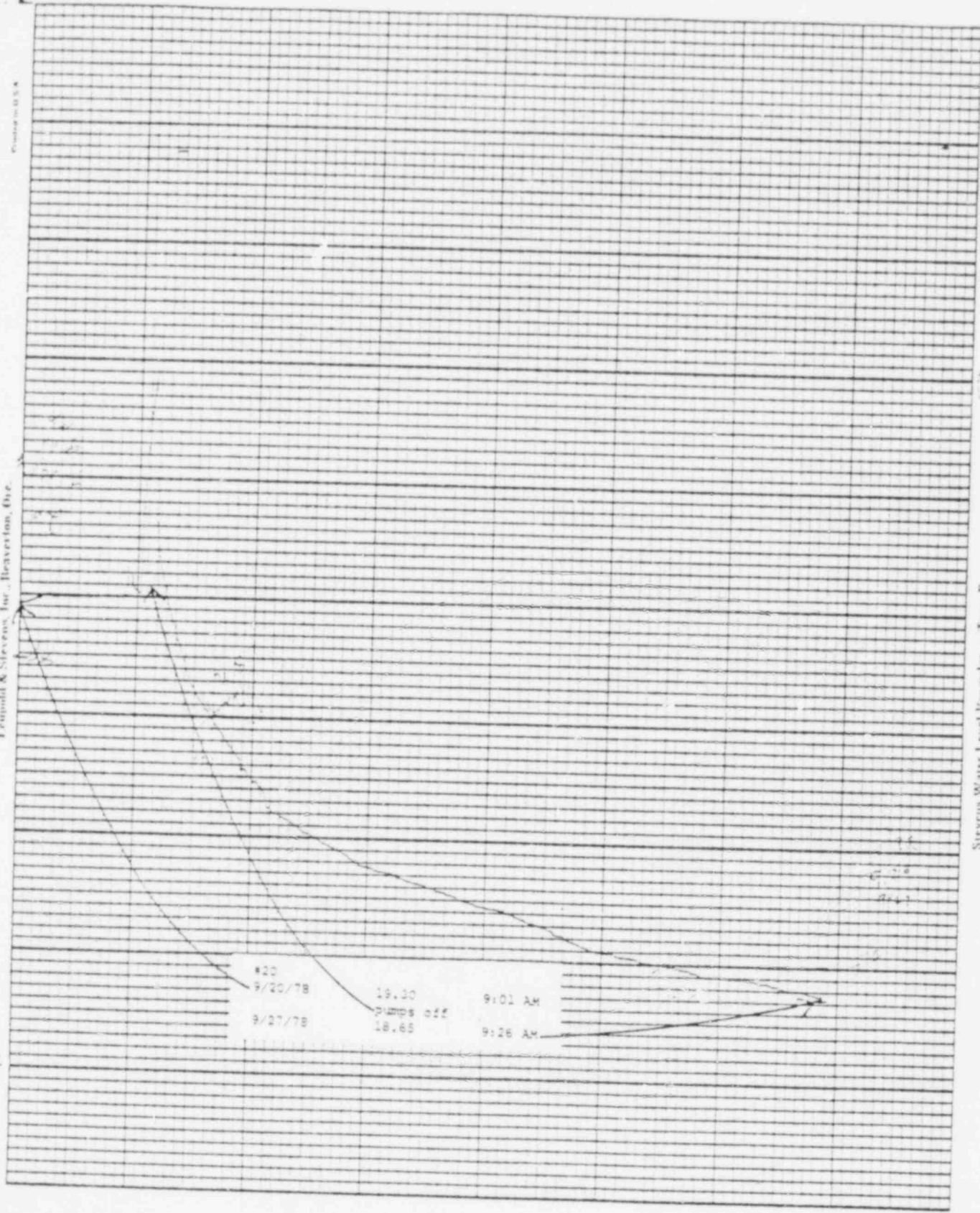
Stevens Water Level Recorder - Type F

Leopold & Stevens, Inc., Beaverton, Ore.

Printed in U.S.A.

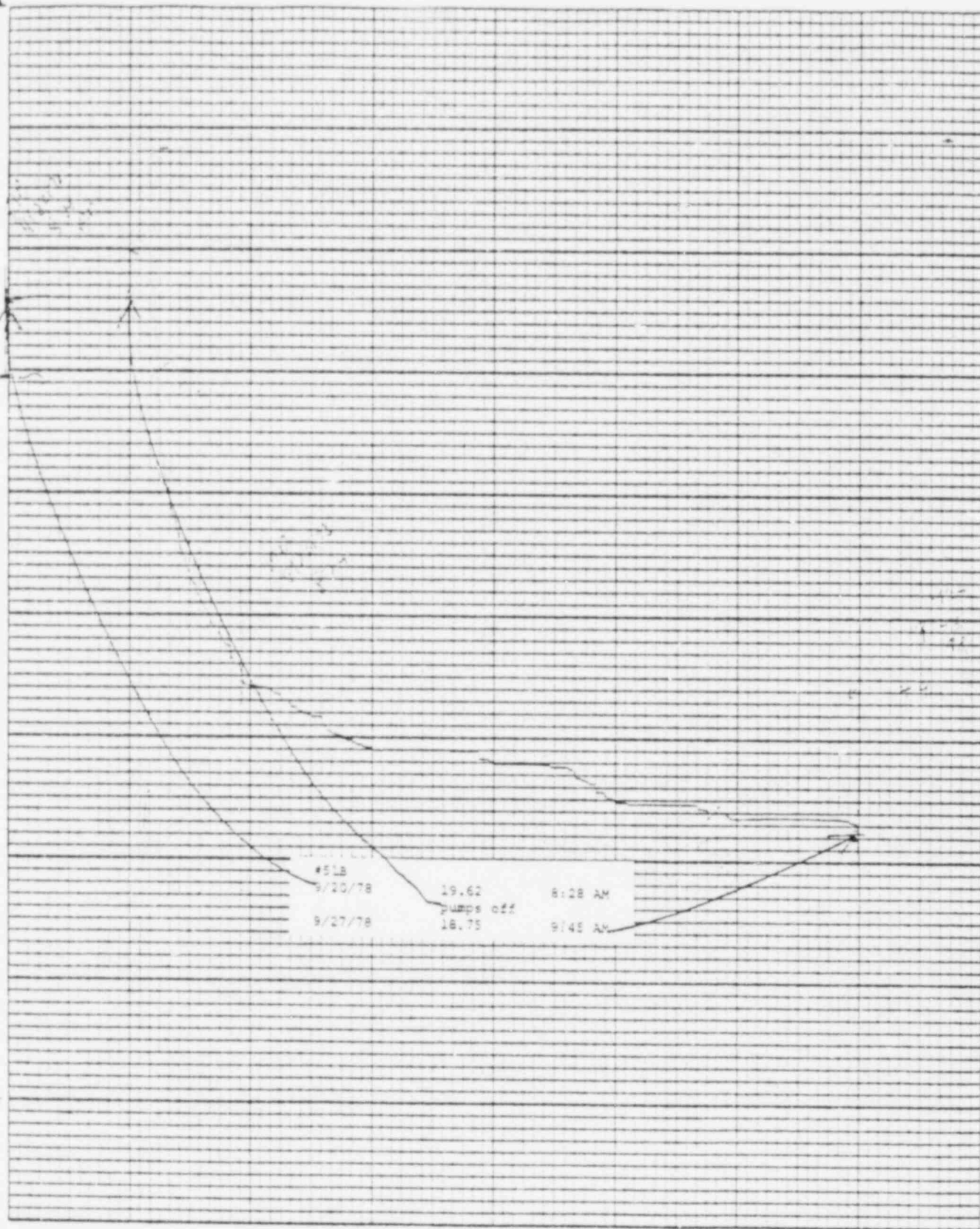
Stevens Water Level Recorder — Type F

Chart F-1



Ingold & Stevens, Inc., Bensenville, Ill.

Form No. 10-5-6

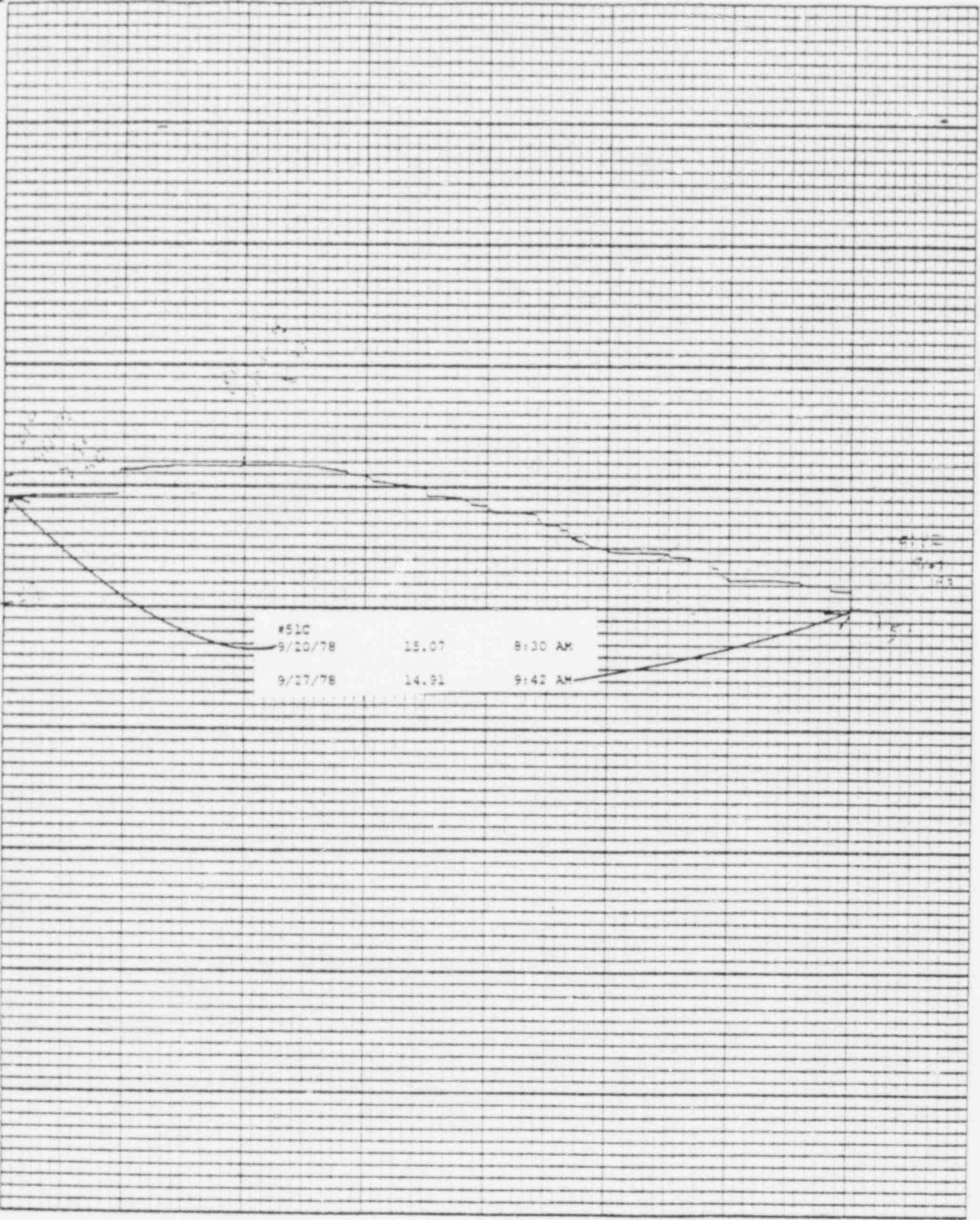


Stevens Water Level Recorder — Type F

Chart F-1

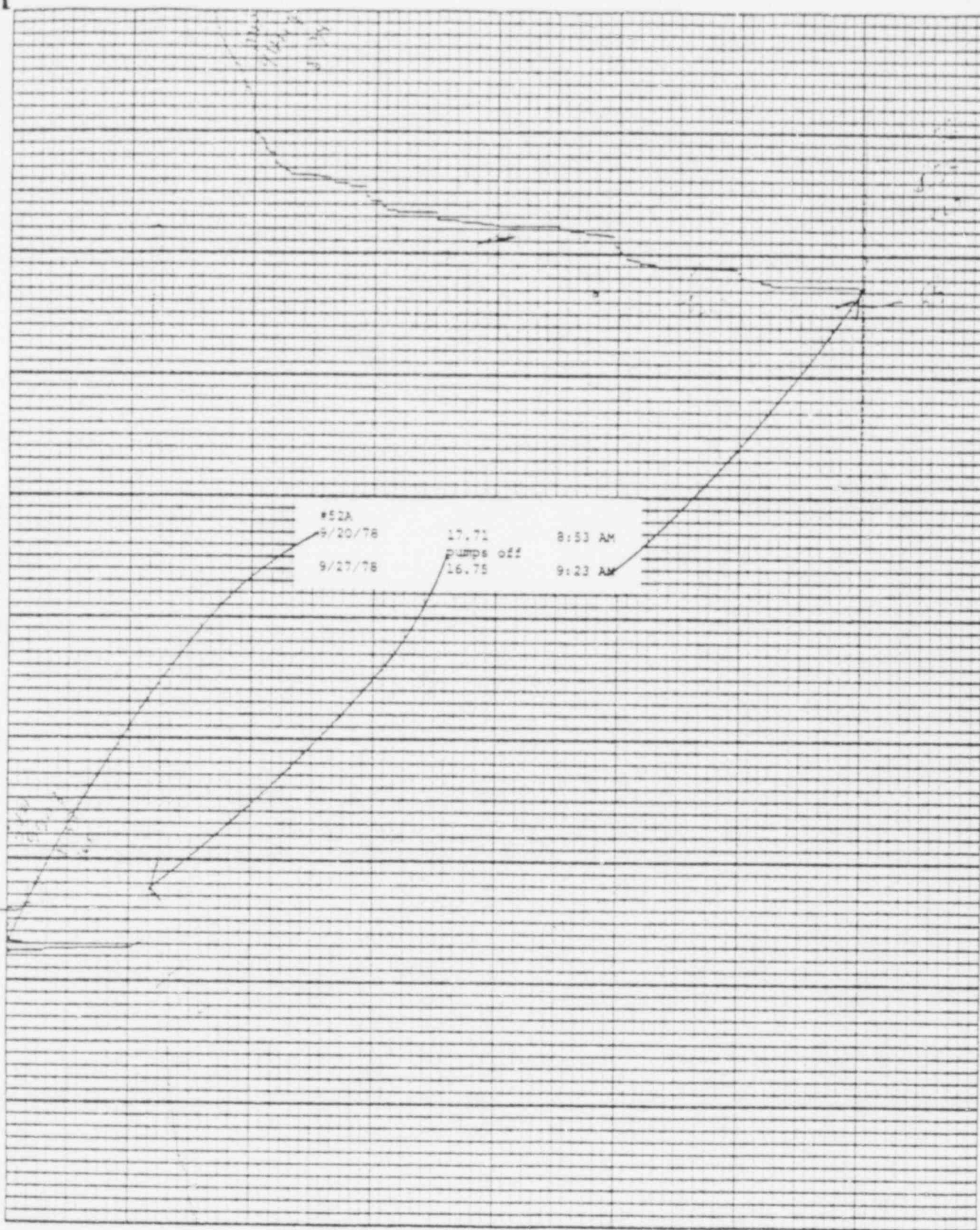
Reynolds & Stevens, Inc., Beaverdam, Vir.

Printed on 11 x 17 in.



Leopold A. Stevens, Inc., Beaverton, Ore.

Model No. 10-1-A



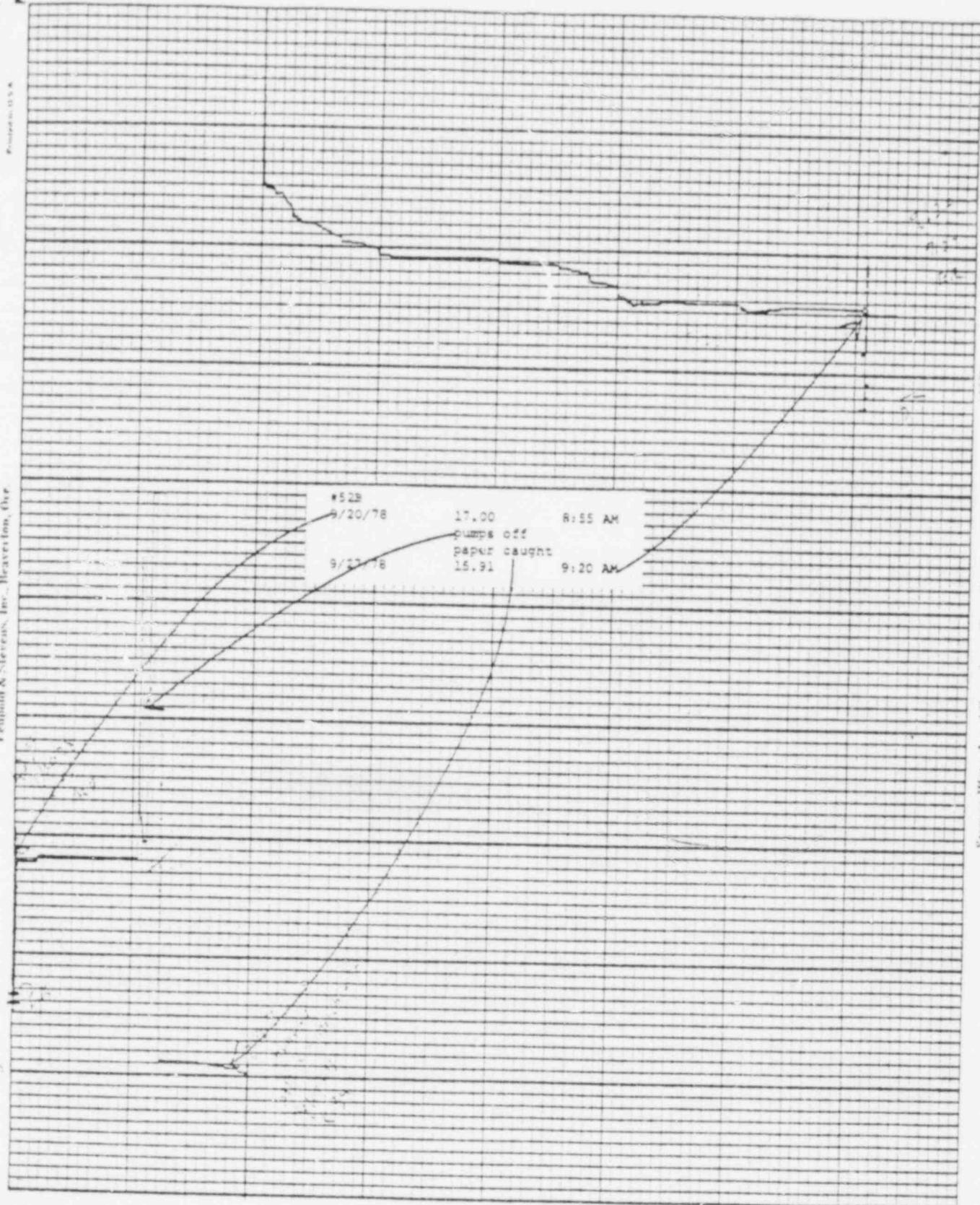
Stevens Water Level Recorder — Type F

(S)

Chart F-1

Leupold & Stevens, Inc., Beaver Dam, Wis.

Product No. 1558



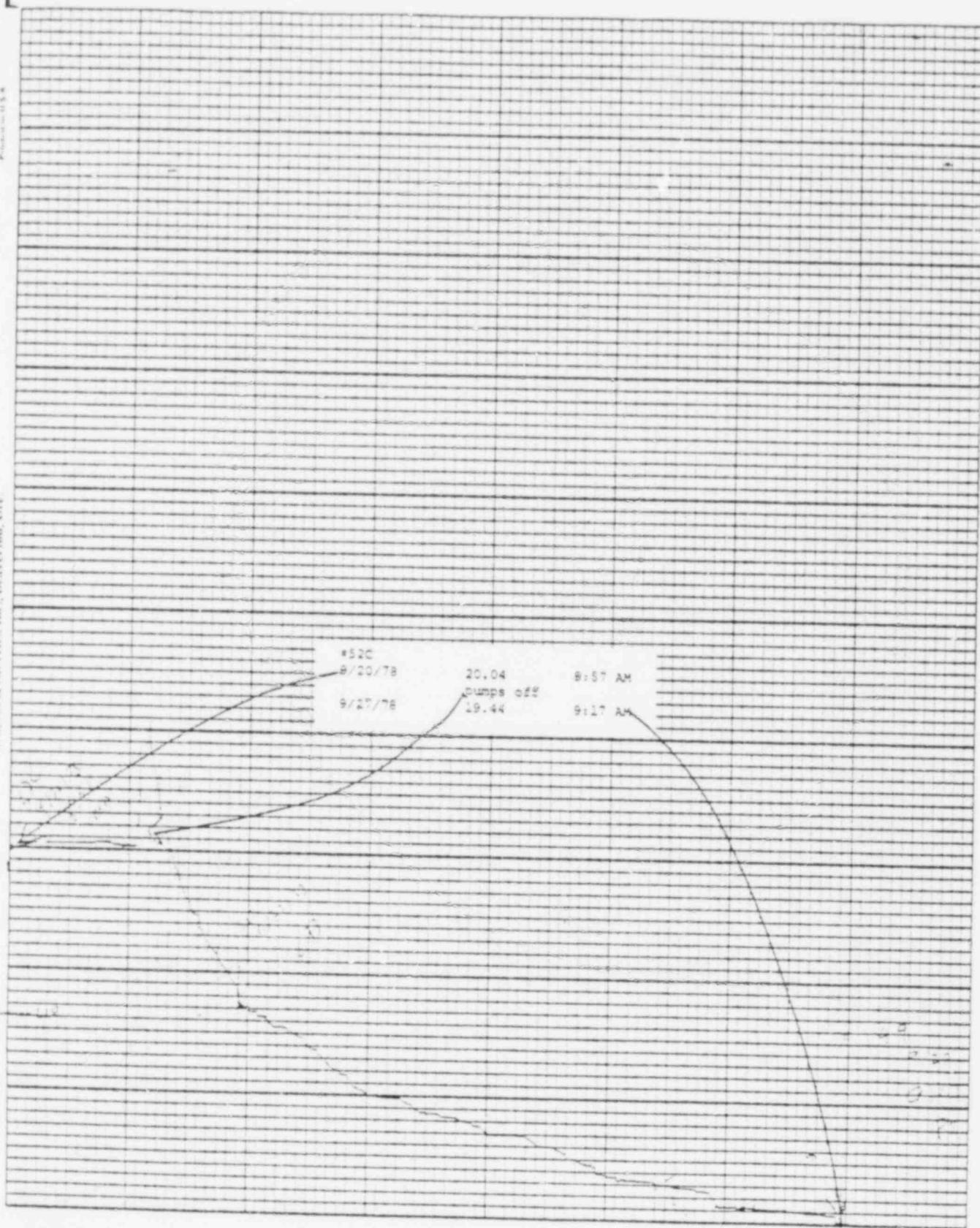
Steven Water Level Recorder — Type F

S

Chart F-1

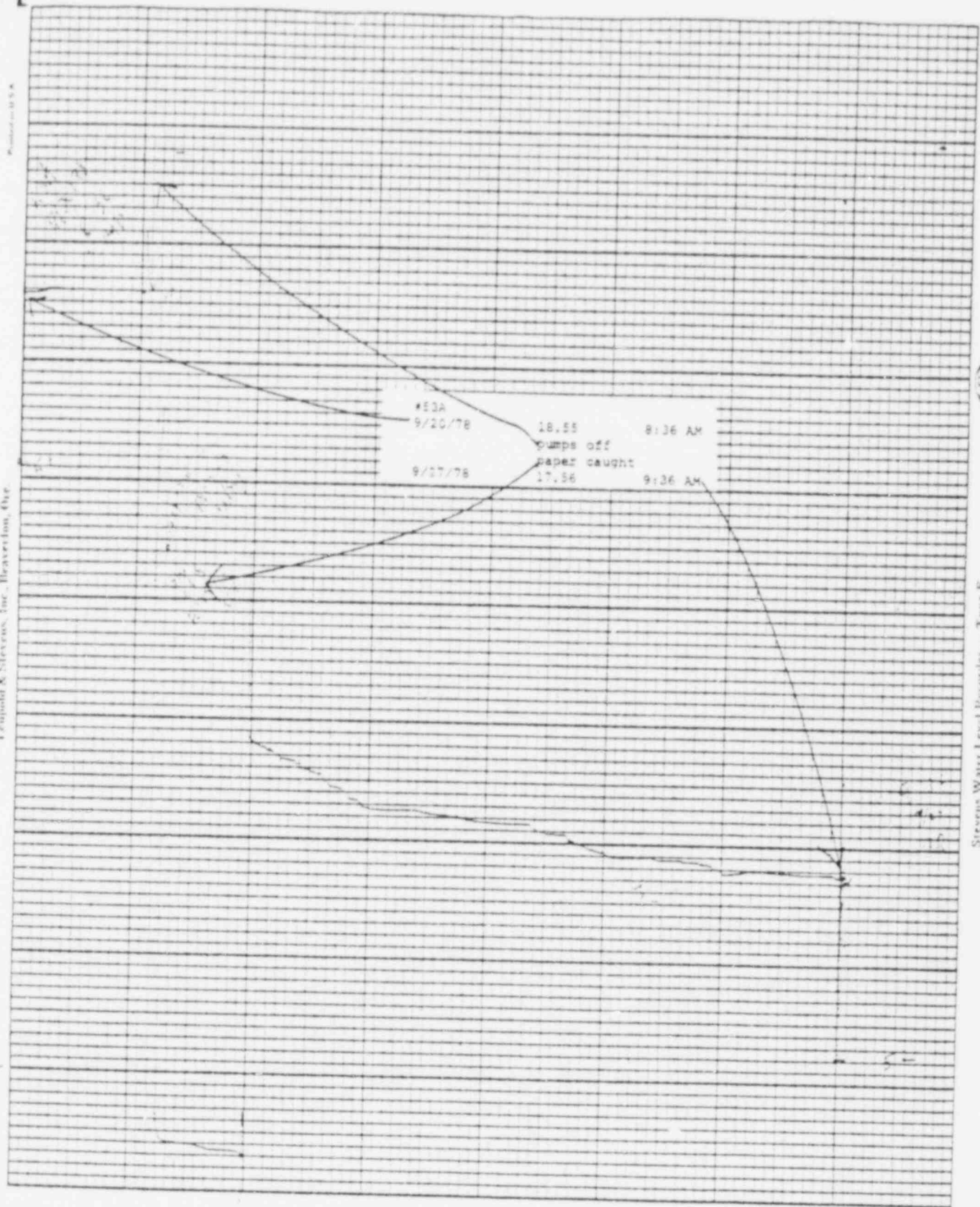
Leinold & Stevens, Inc., Beaver Dam, Wis.

Product No. 115-8



Leopold & Stevens, Inc., Beaverton, Ore.

Printed in U.S.A.



Stevens Water Level Recorder — Type F

Chart F-1

Leopold & Stevens, Inc., Beaverton, Ore.

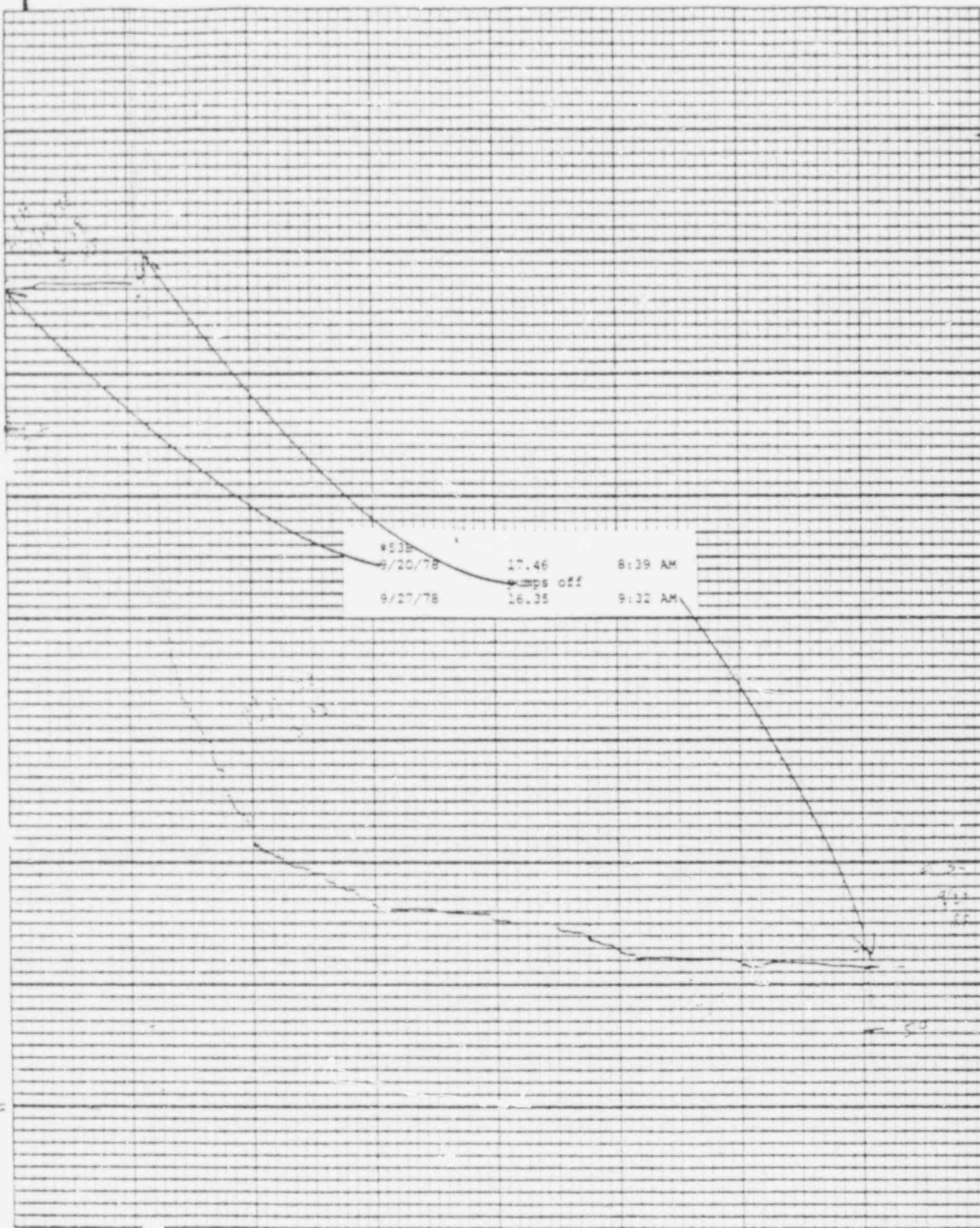


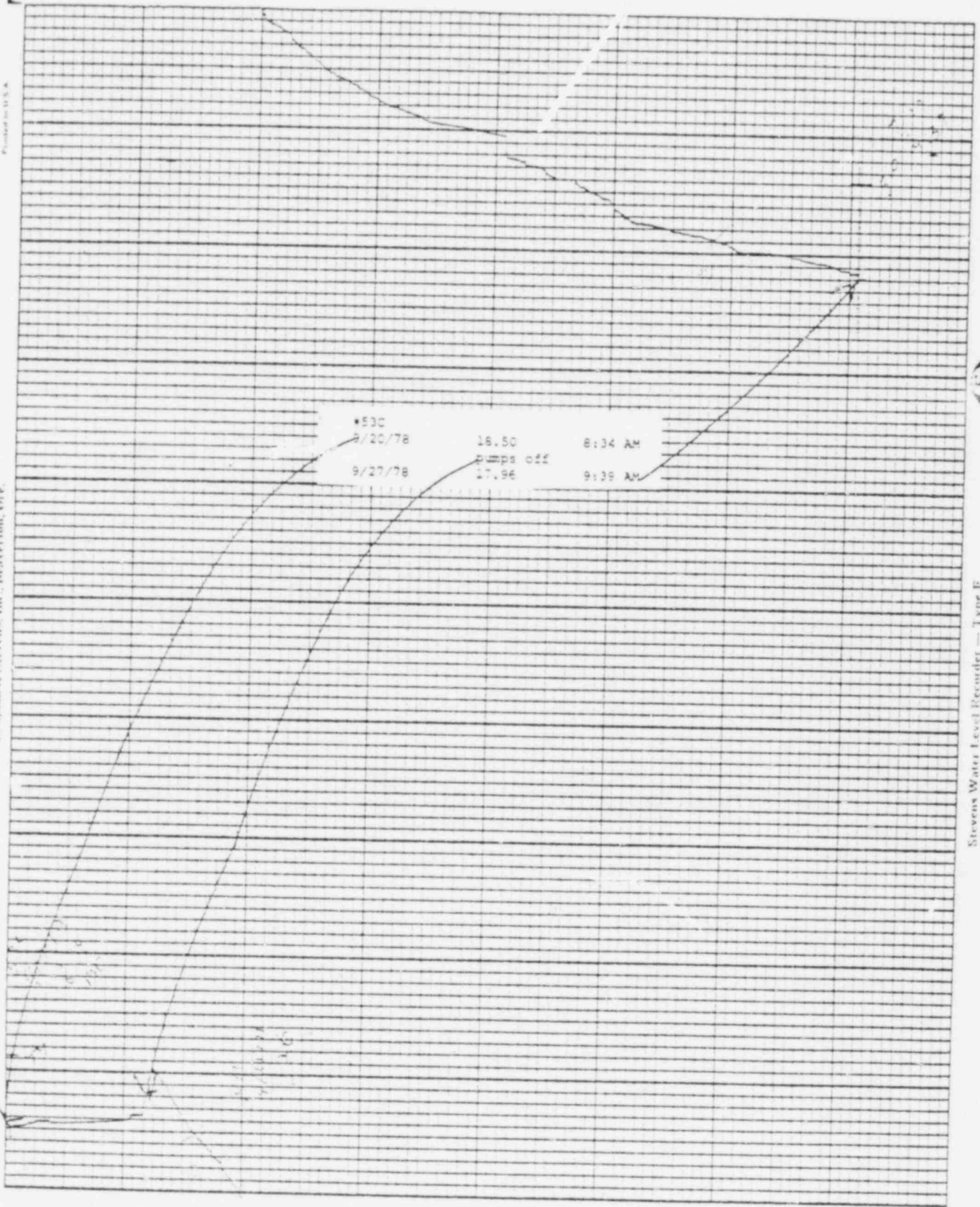
Chart F-1

5

Stevens Wave Level Recorder - Type F

Leopold & Stevens, Inc., Heaverton, Ok.

Printed in U.S.A.

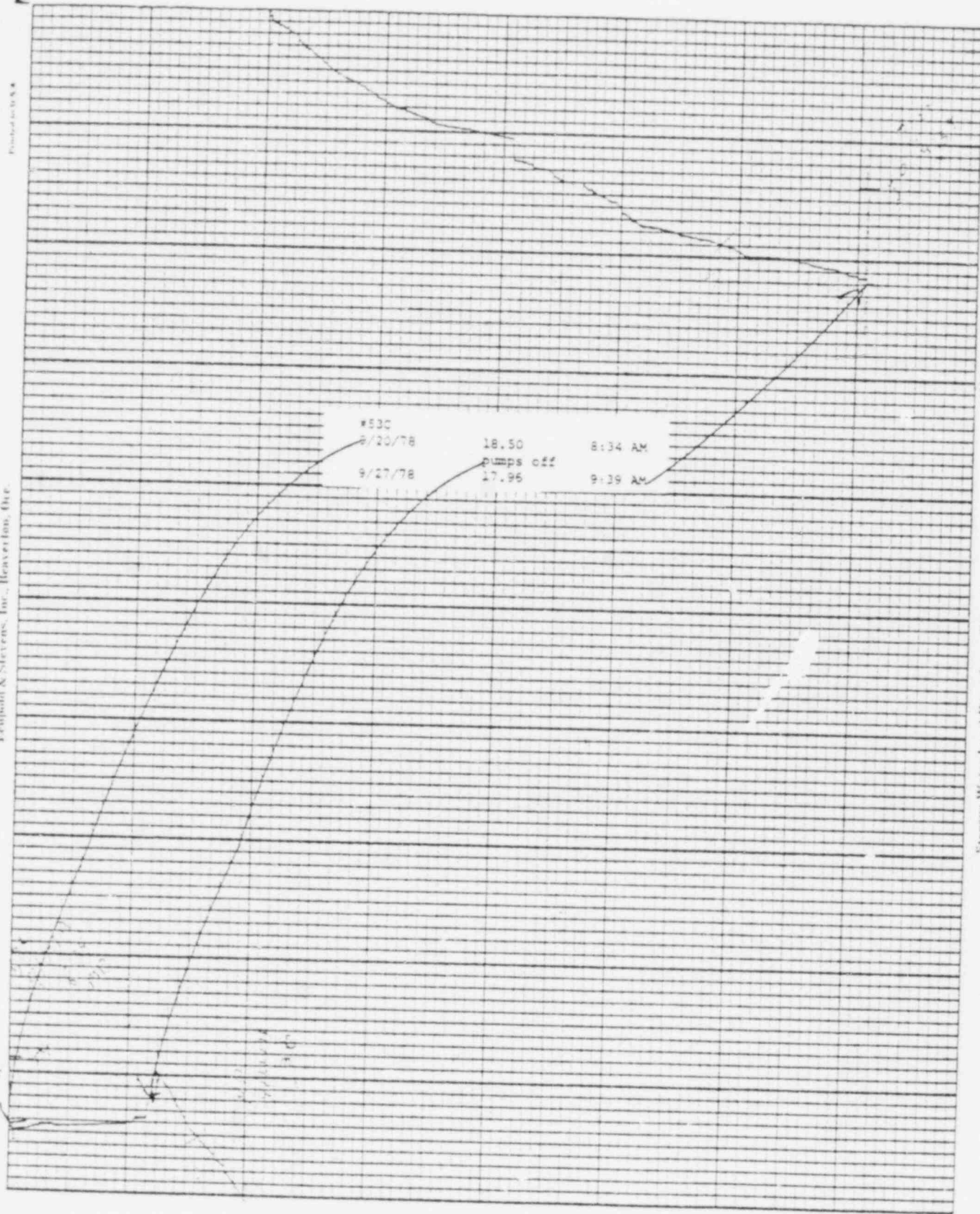


Stevens Water Level Recorder — Type F

Chart F-1

Leopold & Stevens, Inc., Beaverton, Ore.

Printed in U.S.A.



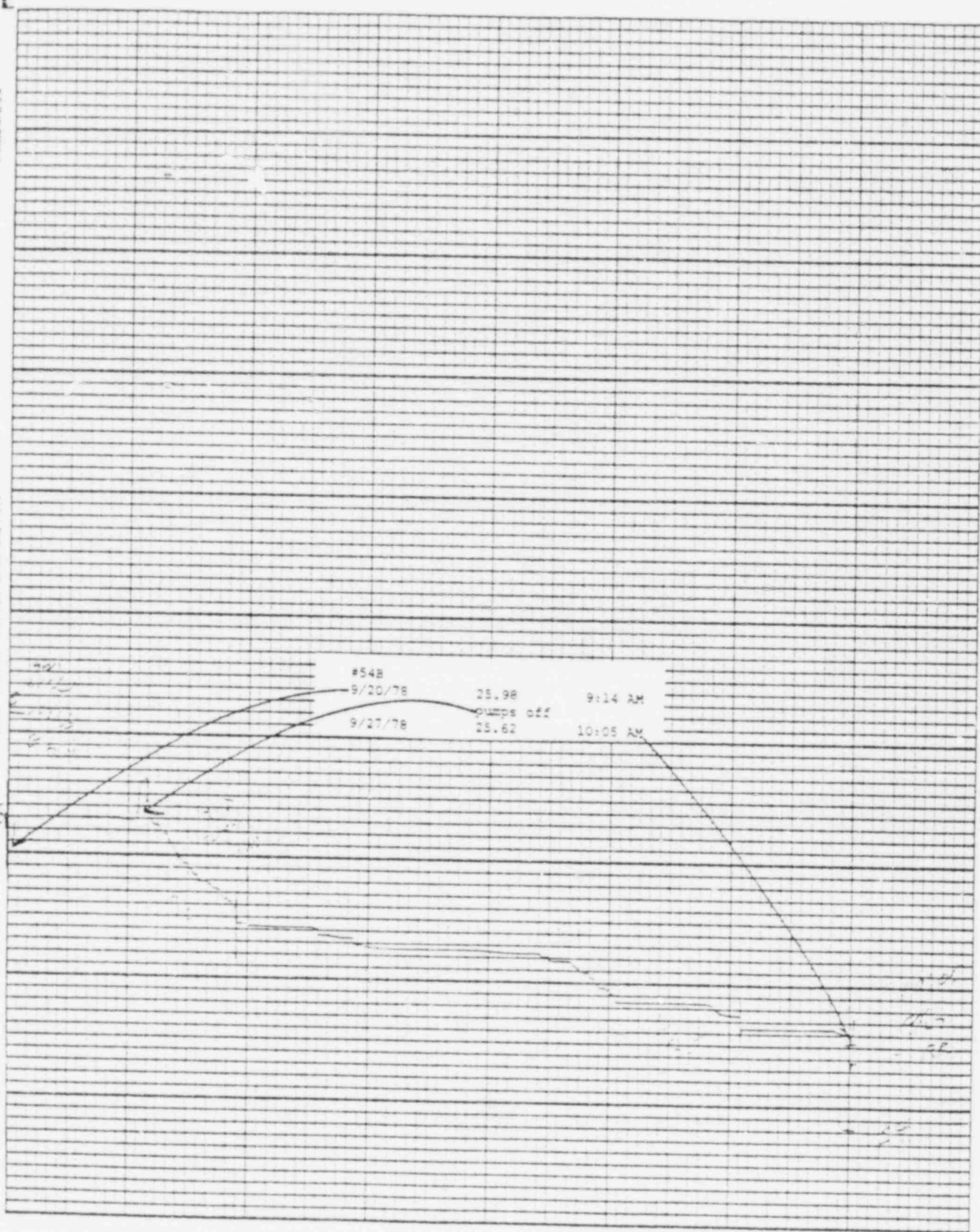
Stevens Water Level Recorder — Type F

(S)

Chart F-4

Printed in U.S.A.

Reynolds & Stevens, Inc., Beaverton, Ore.

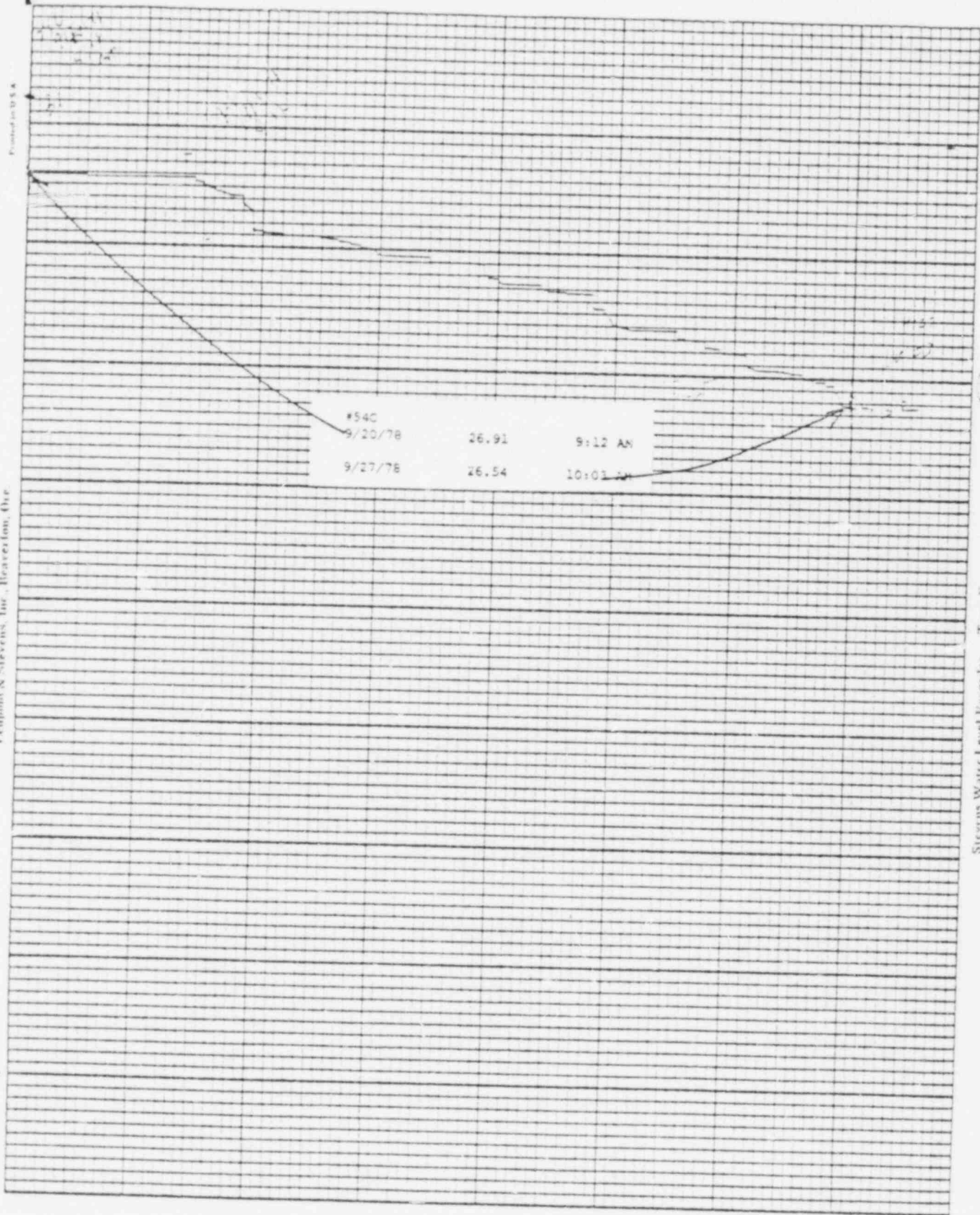


Stevens Water Level Recorder - Type F

Chart F-1

Fennell & Stevens, Inc., Beaverton, Ore.

Printed in U.S.A.



Stevens Water Level Recorder — Type P

Chart P-1

Printed in U.S.A.

Leitch & Stevens, Inc., Beaverton, Ore.

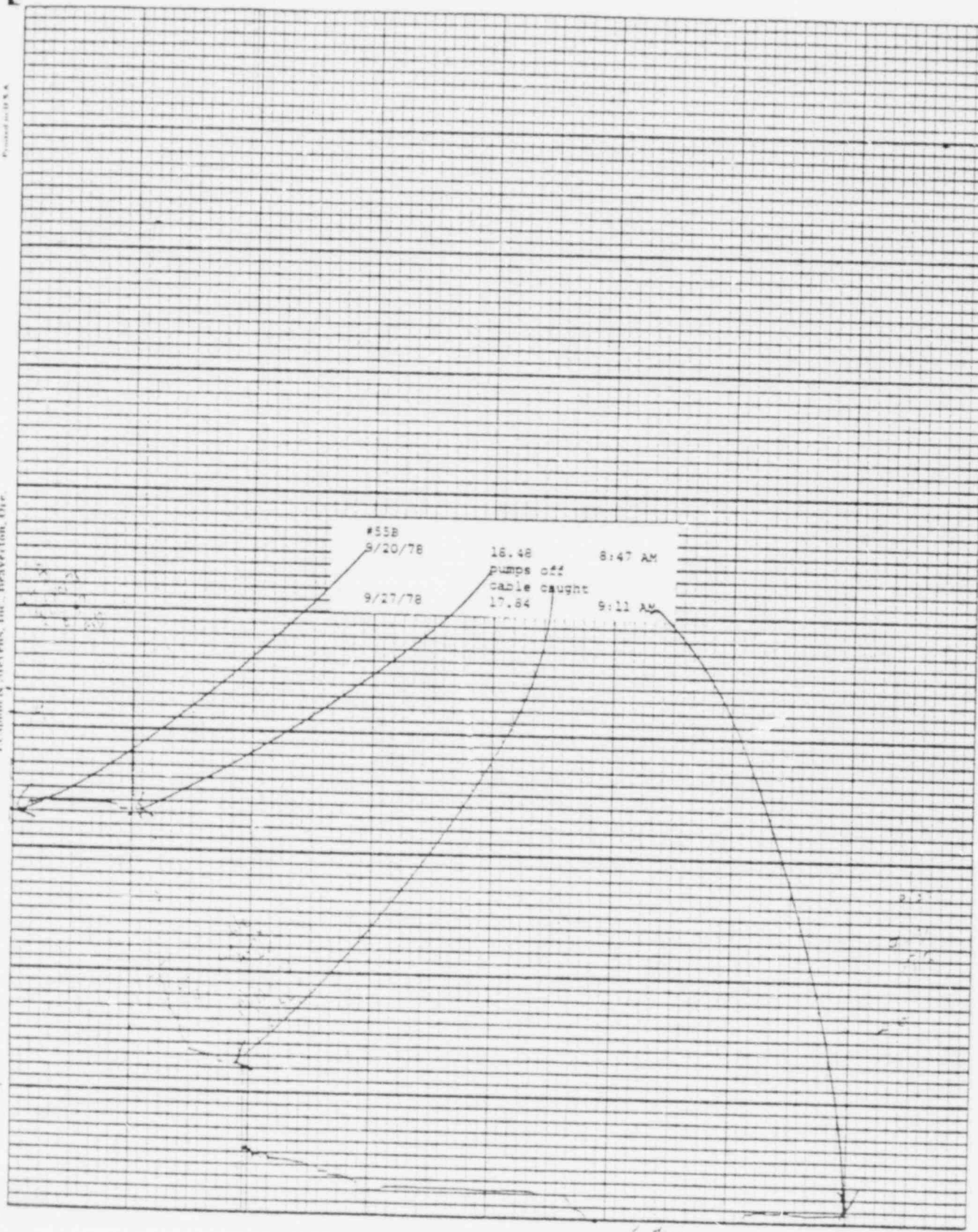
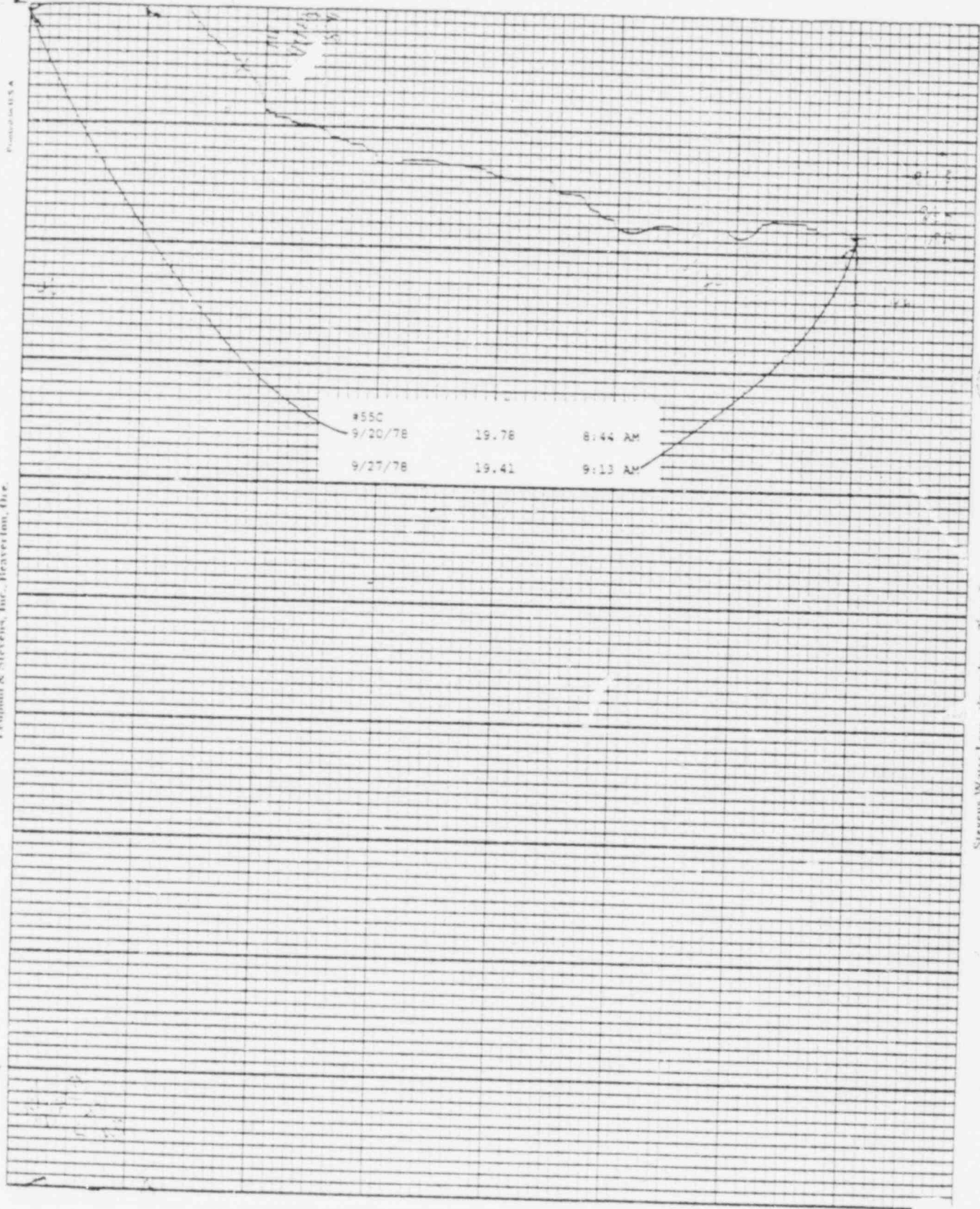


Chart F-1

Stevens Water Level Recorder — Type F

Printed in U.S.A.

Lempold & Stevens, Inc., Pleasanton, Ore.

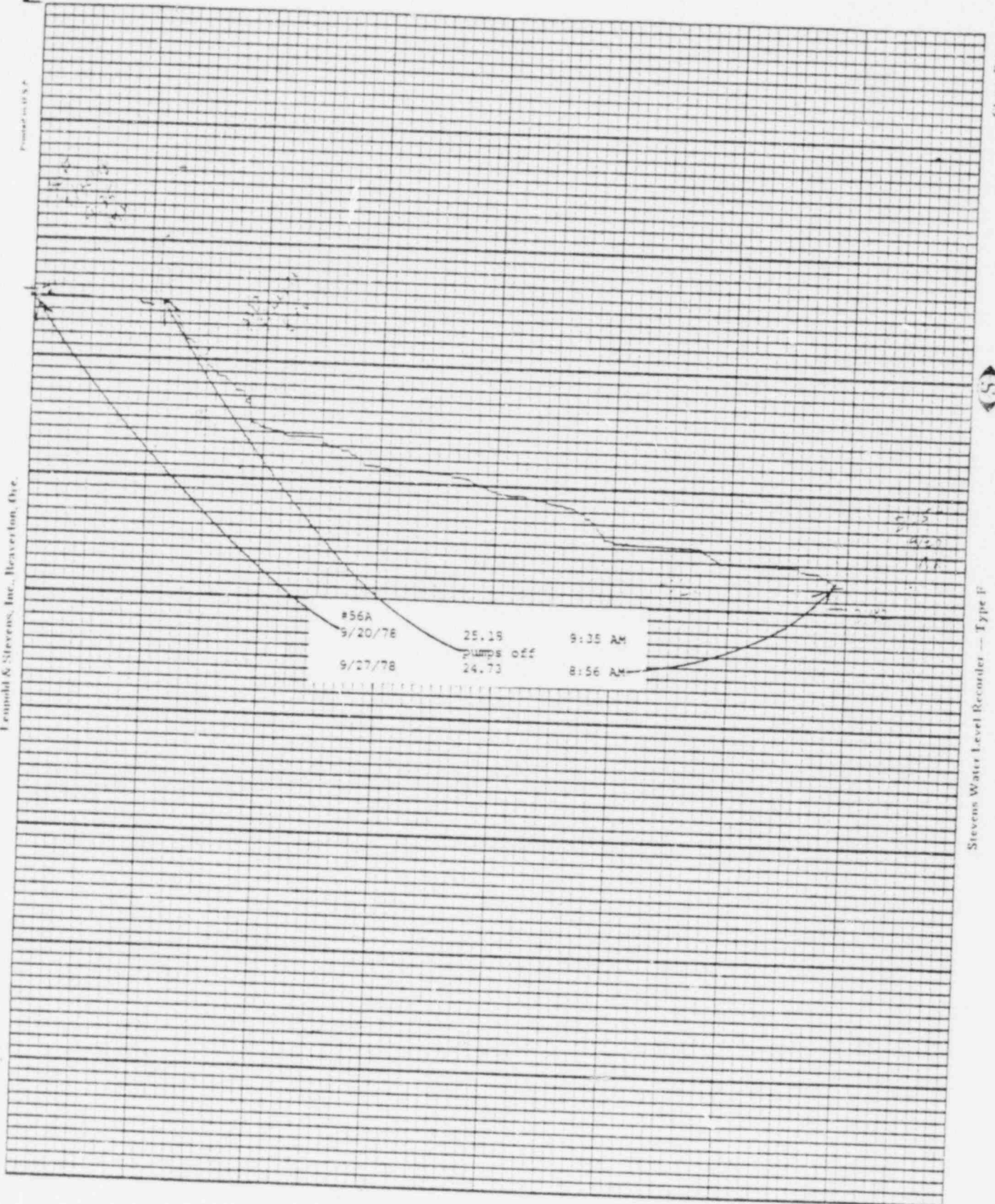


Stevens Water Level Recorder — Type T

Chart F-1

Leopold & Stevens, Inc., Beaverton, Ore.

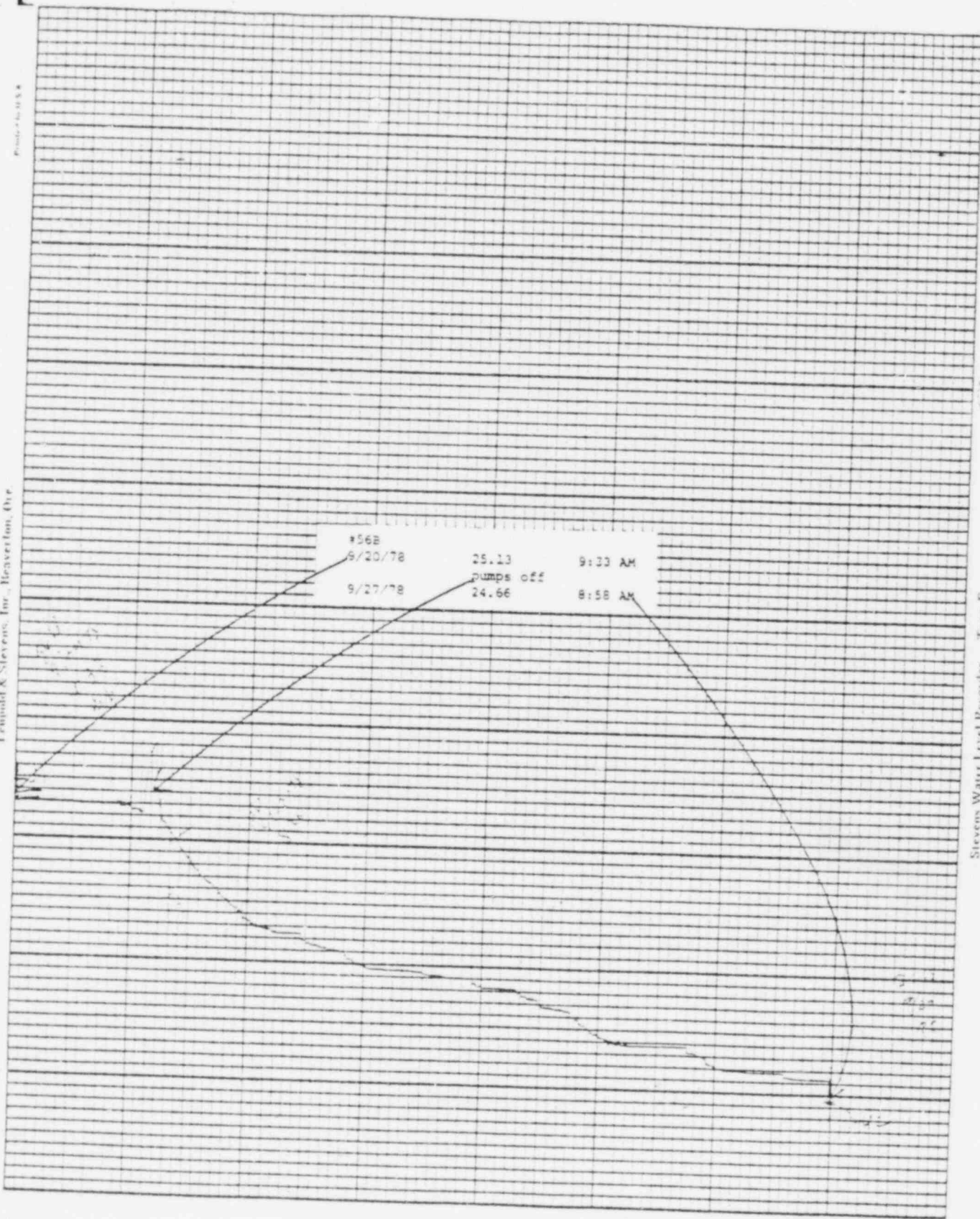
Printed in U.S.A.



Stevens Water Level Recorder — Type F

Chart F-1

Trinidad & Stevens, Inc., Reventon, Ore.

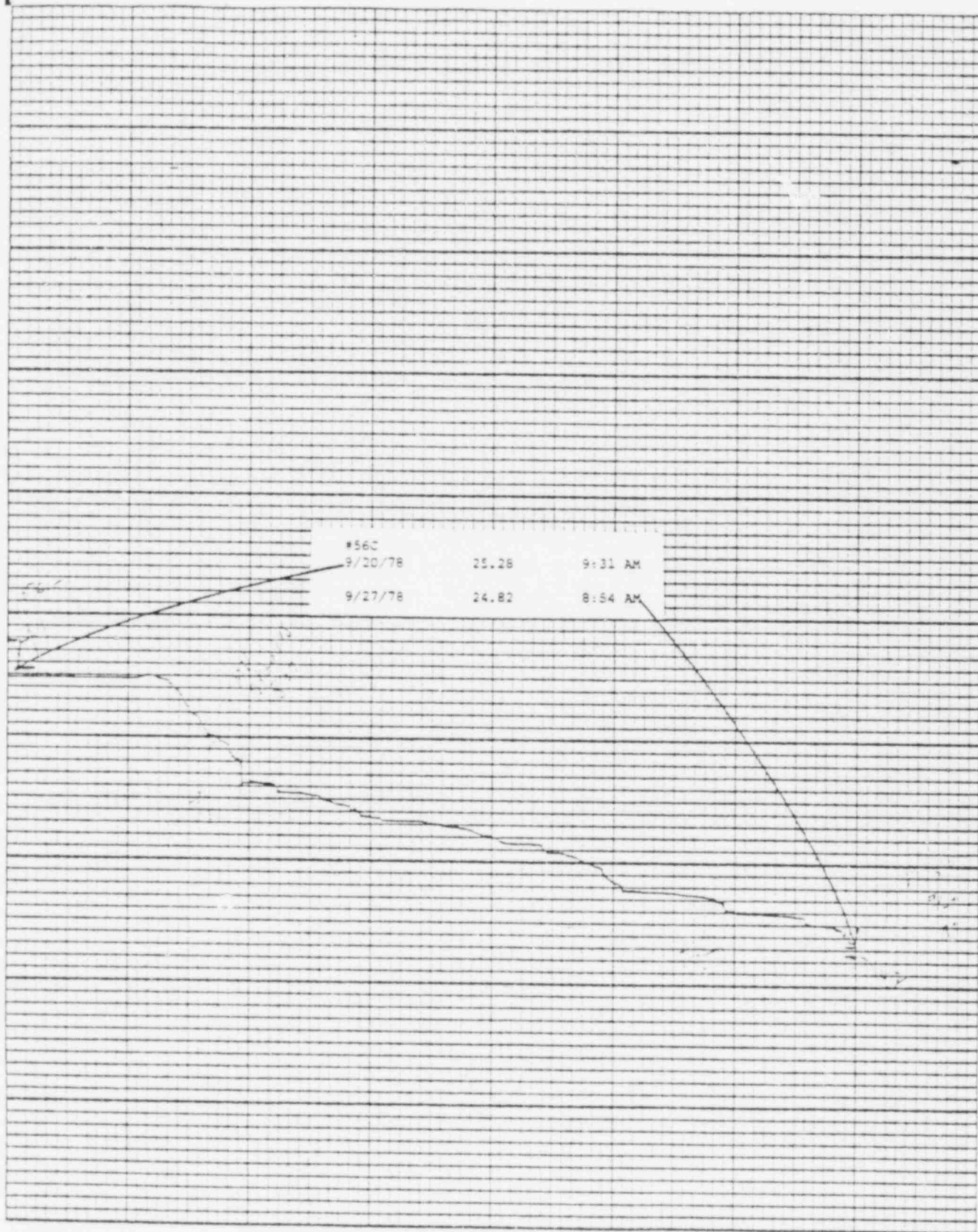


Stevens Water Level Recorder - Type F

Chart F-1

Leopold & Stevens, Inc., Beaverton, Ore.

Printed in U.S.A.



Stevens Water Level Recorder — Type V

Chart F-1

Printed in U.S.A.

Leopold & Stevens, Inc., Beaverton, Ore.

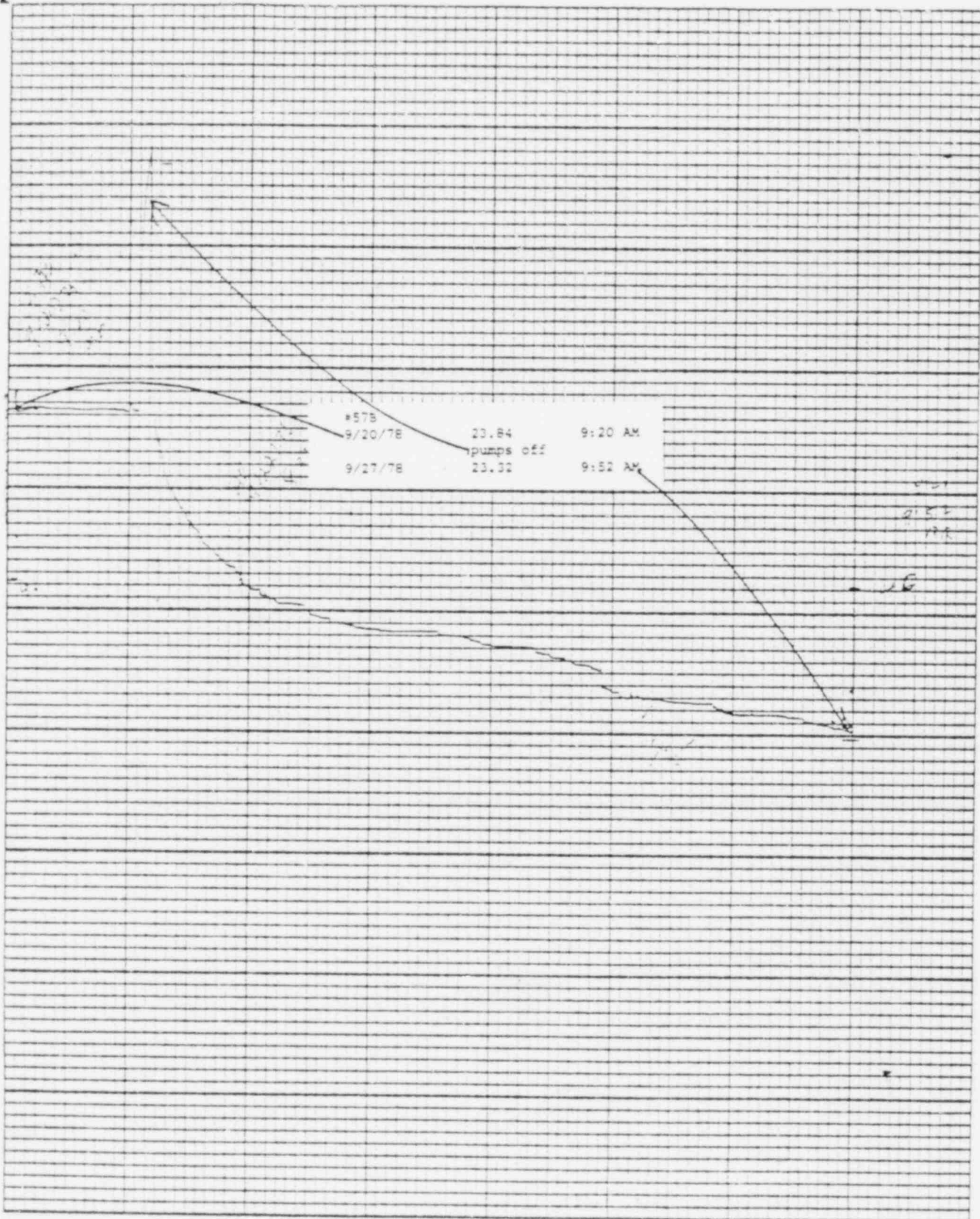
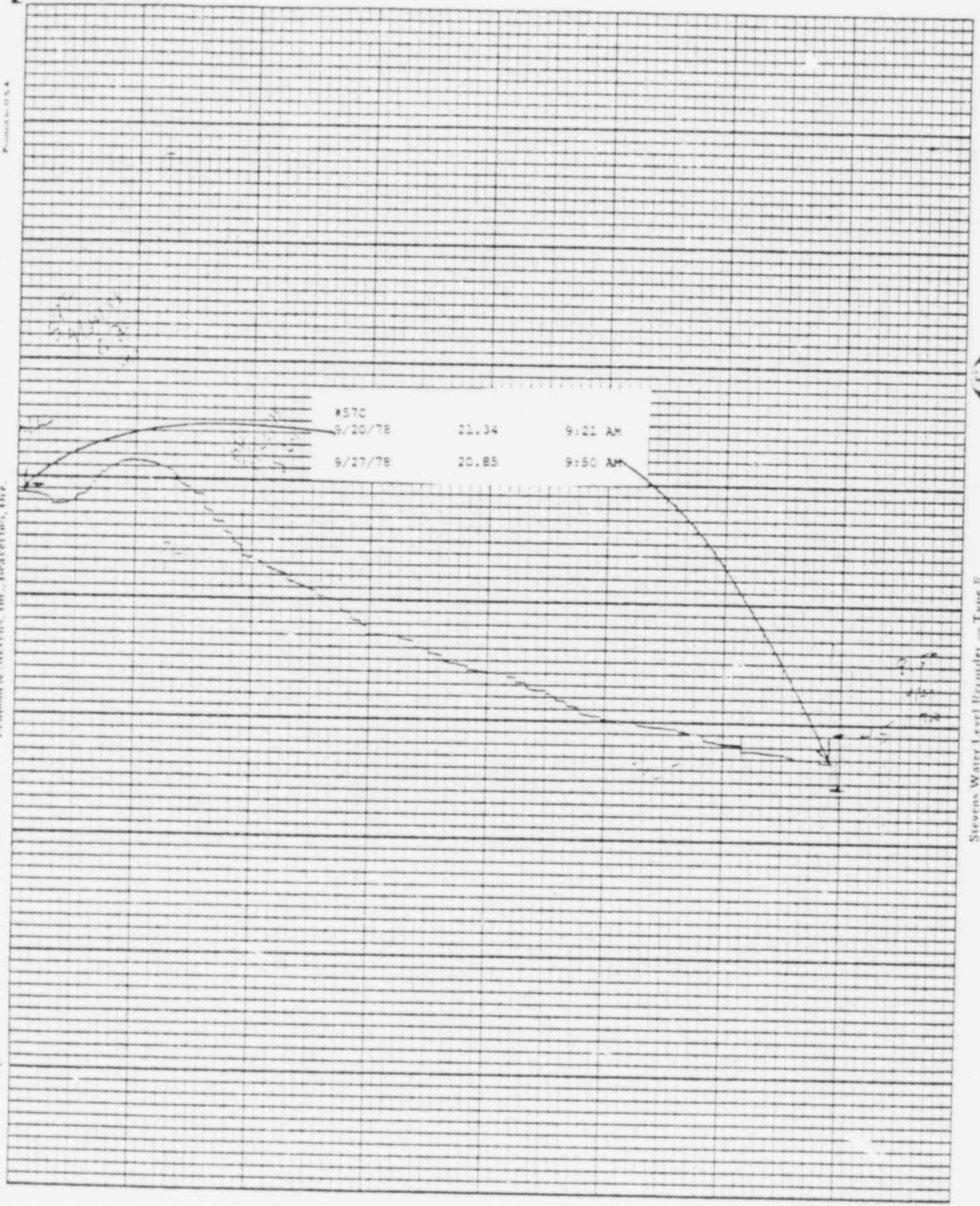


Chart P-1

Stevens Water Level Recorder — Type F

Fremont & Stevens, Inc., Beaver Dam, Wis.

Printed by H. K. K.



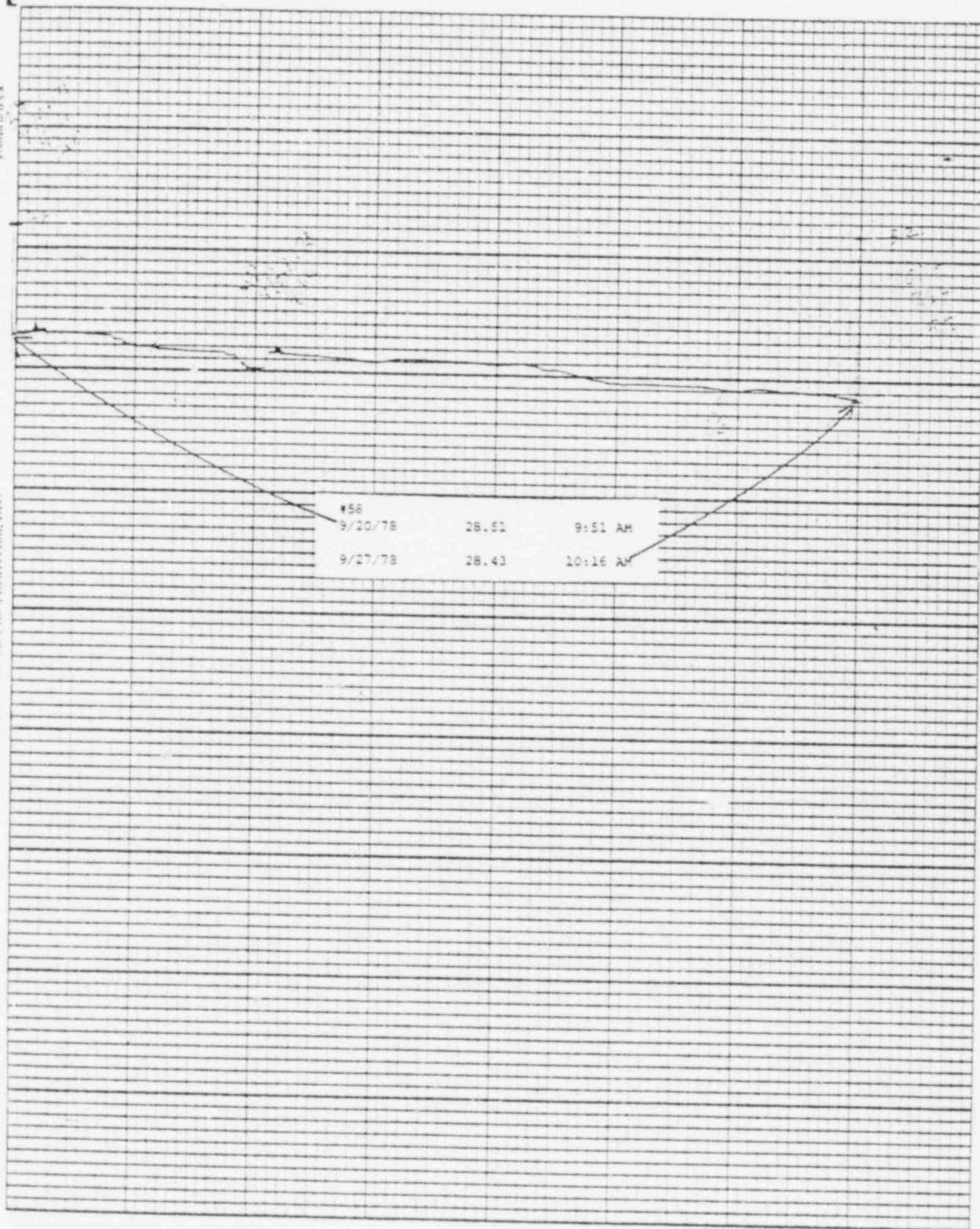
Stevens Water Level Recorder — Type P

(S)

Chart F-1

Leopold & Stevens, Inc., Benavert, Ore.

Printed in U.S.A.



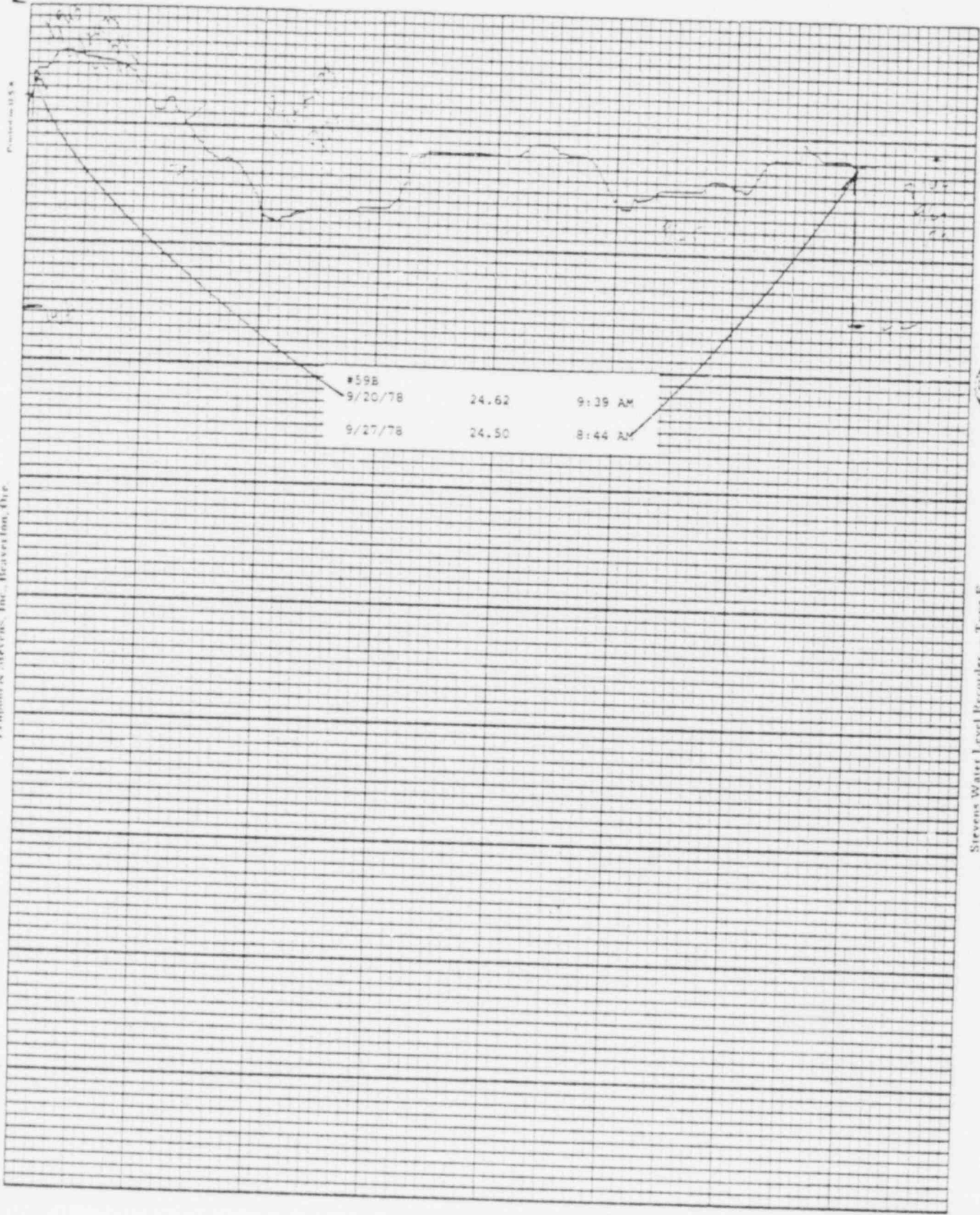
Stevens Water Level Recorder — Type B

(5)

Chart P-1

Empold & Stevens, Inc., Beaver Dam, Wis.

Power in U.S.A.

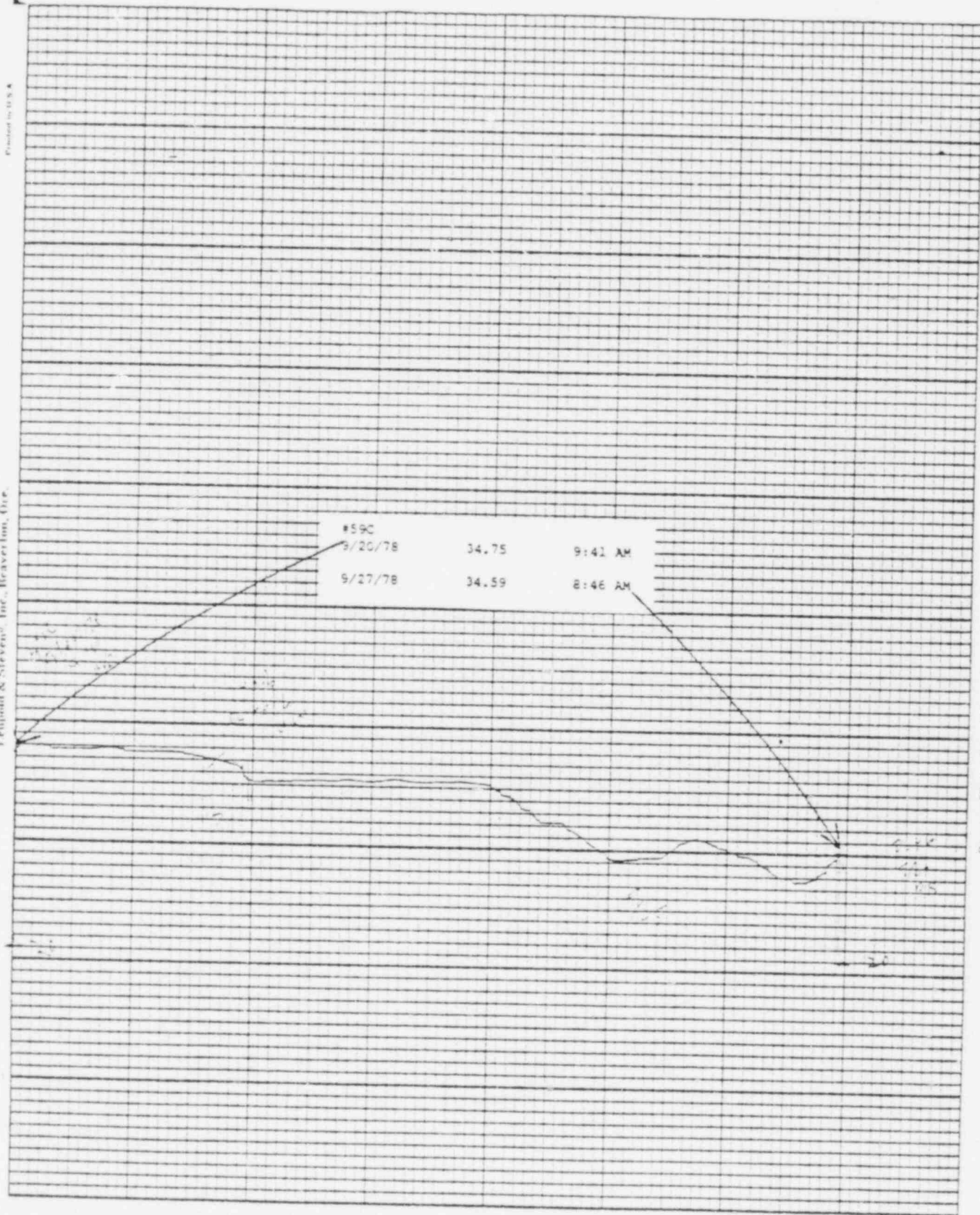


Stevens Water Level Recorder — Type F

Chart F-1

Fremont & Stevens, Inc., Beaverlton, Ore.

Printed by U.S.A.



Stevens Water Level Recorder — Type F

S

Chart F-1

BAILLY WELLS WITHOUT RECORDERS

9/27/78

<u>WELL #</u>	<u>WATER ELEVATION IN FEET</u>
62	32.54
65	27.35
67	23.10
72	10.52
73	10.77
74	13.81

MD:lr
10/2/78

WATER METER READINGS

<u>DATE</u>	<u>TIME</u>	<u>INSTANT GPM</u>	<u>METER READING</u>	<u>AVERAGE GPM</u>	<u>NET CUM. READING</u>
9/21/78	1:51 PM	280	176173000	252	1154000
9/25/78	8:56 AM	305	177910000	314	1737000

POND LEVELS

<u>POND</u>	<u>9/27/78</u>
1	29.28'
2	30.50'
3	29.27'
4	24.15'
5	23.62'
6	33.63'
7	28.30'
8	DRY
9	28.51'
10	39.51'
11	39.35'
12	36.50'
13	38.19'

MD:lr
10/2/78

PNEUMATIC PRESSURE TRANSDUCERS

9/27/78

<u>TRANSDUCER</u>	<u>WATER ELEVATION IN FEET</u>
P-1	7.8
P-2	13.1
P-3	6.7
P-4	13.9
P-5	14.6
P-6	15.3

MD:lr
10/2/78

RAINFALL FLINT LAKE PUMP STATION
8/17/78 - 9/27/78
(RAINFALL IN INCHES)

8/17/78	0	9/1/78	0
8/18/78	0	9/2/78	0
8/19/78	0	9/3/78	0
8/20/78	0	9/4/78	0
8/21/78	0	9/5/78	0
8/22/78	0	9/6/78	0
8/23/78	0	9/7/78	0
8/24/78	0.1	9/8/78	0
8/25/78	0	9/9/78	0
8/26/78	0	9/10/78	NA
8/27/78	0	9/11/78	NA
8/28/78	1.63	9/12/78	NA
8/29/78	0	9/13/78	0.45
8/30/78	0	9/14/78	0.44
8/31/78	0	9/15/78	0
		9/16/78	0
		9/17/78	0.28
		9/18/78	1.15
		9/19/78	0
		9/20/78	0
		9/21/78	0.26
		9/22/78	0.02
		9/23/78	0
		9/24/78	0
		9/25/78	0
		9/26/78	0
		9/27/78	0

MD:lr
10/3/78

LAKE MICHIGAN LEVELS

REFERENCE TO STATION DATUM

<u>DATE</u>	<u>FEET</u>
8/15/78	2.2
9/1/78	2.2

RR:lr
9/29/78