

PHILADELPHIA
NEW YORK
HARRISBURG

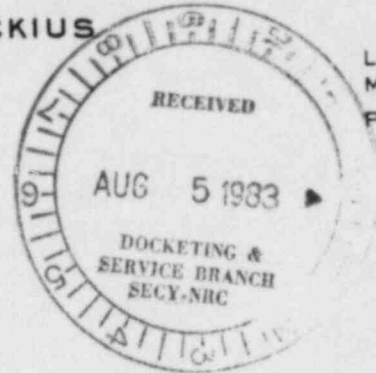
MORGAN, LEWIS & BOCKIUS

COUNSELORS AT LAW
1800 M STREET, N.W.
WASHINGTON, D.C. 20036
TELEPHONE: (202) 872-5000

LOS ANGELES
MIAMI
PARIS
ASSOCIATED OFFICE

GEORGE L. EDGAR
DIAL DIRECT (202) 872-5121

August 5, 1983



Marshall E. Miller, Esquire
Chairman
Atomic Safety & Licensing Board
U.S. Nuclear Regulatory Commission
East-West Towers
4350 East-West Highway
Bethesda, Maryland 20814

Dr. Cadet H. Hand, Jr.
Director
Bodega Marine Laboratory
University of California
West Side Road
Bodega Bay, California 94923

Mr. Gustave A. Linenberger
Atomic Safety & Licensing Board
U.S. Nuclear Regulatory Commission
East-West Towers
4350 East-West Highway
Bethesda, Maryland 20814

Re: Clinch River Breeder Reactor Plant - Docket No. 50-537

Gentlemen:

Enclosed are errata sheets for Applicants' prepared testimony (A Exh's 87, 89, and 95) in the above captioned proceedings. At the evidentiary hearings Applicants will offer versions of Exhibits 87, 89, and 95 which will have the attached errata clearly marked and inserted.

Respectfully submitted,

George L. Edgar
Attorney for
Project Management Corporation

Enclosure

GLE:lpn

Service List

8308090086 830805
PDR ADOCK 05000537
T PDR

DS03

APPLICANTS' DBA TESTIMONY (EXHIBIT 87) ERRATA

Page 8

Add a new final paragraph as follows: In addition to this no-sodium-boiling criterion to assure core coolability, Applicants have committed to impose a quantitative limit related to the degree of internal fuel pellet melting for FSAR analyses. The relationship of the no-sodium-boiling, fuel melting and other fuel design criteria are discussed in Q/A 154. Q/A 51 discusses the only DBA which gives rise to fuel melting and its acceptability. In effect, the event does not generate sufficient molten fuel to produce significant internal fuel pressures that would cause cladding failure and molten fuel ejection. Thus all other DBA conditions are enveloped by the no-sodium-boiling criterion, as discussed above.

Page 33	Line 19	Change "reach" to "travel from the evaporators to"
Page 38	3rd from last line	Add "at power" after "PHTS pumps"
Page 53	Last line	Delete "between heat"
Page 54	Line 4	Change "inbalance" to "imbalance"
Page 56	Line 11	Change "7.1.2" to "7.1 and 7.2"
Page 59	Table Heading	Change "RRS" to "RSS"
Page 66	Line 8	Change "1300" to "13,000"

Page 68	Lines 9, 10	Replace comma after "power" with period; capitalize "because"
Page 81	Line 5	Insert "unacceptable" before "degradation"
Page 95	Figure 35	Modify per attached mark-up
Page 99	Figure 38	Modify per attached mark-up
Page 116	Line 8	Change "mills" to "mils"
Page 126	Lines 17-19	Revise to read "...wall penetration would occur when the crack length is very small..." (Delete Line 18 entirely.)
Page 140	Line 7	Insert "heat" after "generate"
Page 165	Line 22	Change "Qalification" to "Qualification"
Page 206	Line 1	Add "Table 6" above "SSST Guidelines and Doses"
Page 206	-----	In the "Low Population Zone" column, change the "Red Bone Marrow" entry from 1.5 to 0.7 and change the "Mortality Risk Equivalent Whole Body Dose" entry from 0.7 to 1.5
Page 210	Line 7	Change "zircoloy" to "Zircaloy"

off-site power supply consists of four separate connections to the TVA grid as shown in Figure 35.

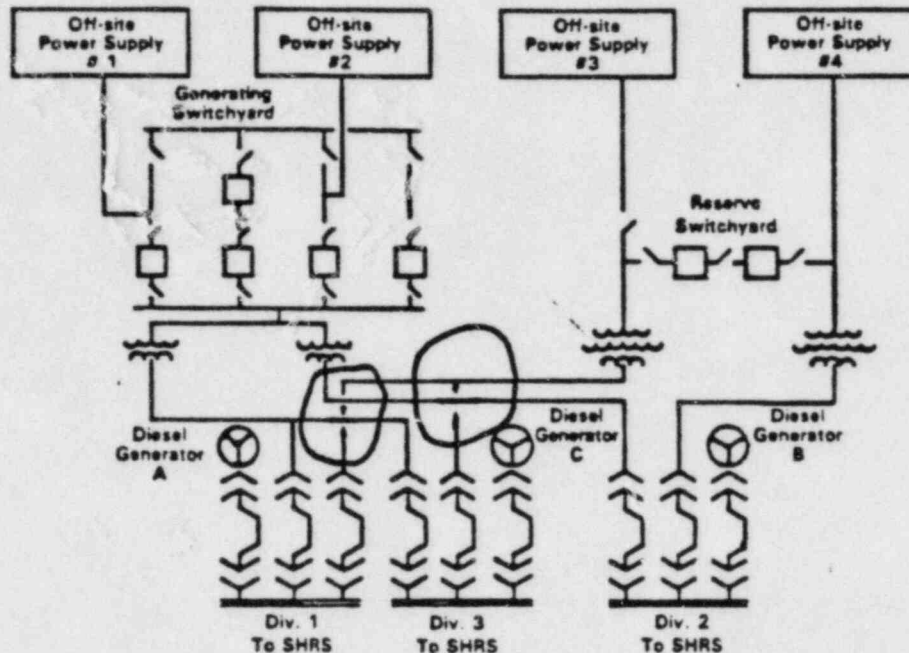


Figure 35. SHRS AC Power Supplies

The principal on-site power supplies are three safety related diesel-generators. The pony motors of each HTS path and its associated PACC are provided on-site power from a diesel-generator which is separate and independent of the diesel-generators for the other two paths. Additional diversity exists because one of the three diesel-generators is a different size and built by a different manufacturer than the other two. The design of the SGAERS electrical equipment and the power supply equipment, including the diesel generators, is of proven technology, demonstrated by service in light water reactor plants. SGAERS mechanical equipment is safety-related, of proven design, designed to the ASME code for nuclear

activities are planned to support further refinement of the model. Further details of the natural circulation verification program are provided in PSAR Section 5.7.5.

Q88. What are the implications of establishing natural circulation capability for CRBRP?

A88. By using this natural circulation capability, along with the turbine-driven AFW pump with battery powered instrumentation and control, SHRS capability can be maintained even in the event of loss of all off-site power and loss of all three on-site diesel-generators (station blackout). Figure 38 summarizes the plant provisions for mitigation of station blackout.

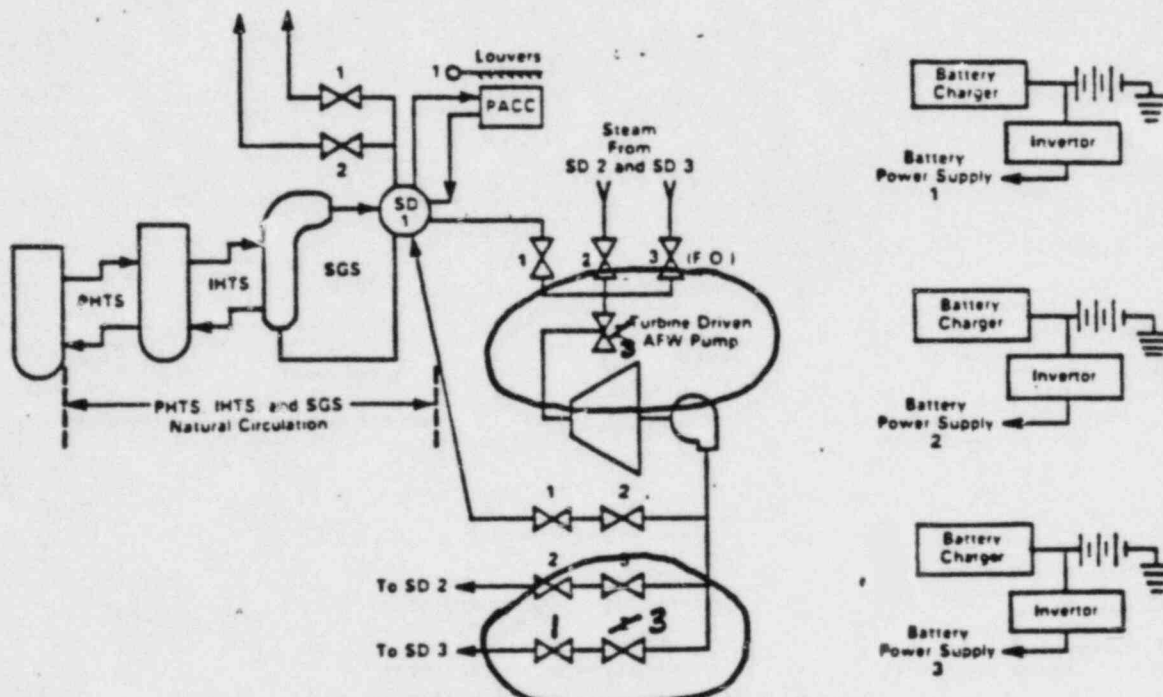


Figure 38. CRBRP Provisions to Mitigate Station Blackout

Q89. What inherent characteristics of CRBRP contribute to a high SHRS reliability?

APPLICANTS' HCDA TESTIMONY (EXHIBIT 89) ERRATA

Cover Sheet	Last line	Delete "Corporation"
Page 37	Lines 12, 13	Revise to read "... in CRBRP-3, Volume 2 as itemized below:
Page 37	-----	In the "Reference" column, delete "(Section of CRBRP-3, Volume 2 unless noted otherwise)"
Page 38	Line 6	Revise to read "Appendix G.2 and Appendix K.2"
Page 38	Line 14	Delete reference "Note 2", and replace with "Appendix K.3"
Page 38	Lines 15-21	Delete Notes 1 and 2
Page 45	Last line of A45	Add "For containment penetrations, the limiting penetration is the equipment hatch, which is limited by buckling. Application of ASME Code Case N-284 showed that the pressure capability of the equipment hatch is comparable to the capability identified in Table 3-10 noted above. The pressure capability of containment and penetrations will be reassessed at the Operating License review stage."
Page 59	Lines 3-6	Delete "(Letter, John R. Longenecker ... October 20, 1982). Replace with "(CRBRP-3, Vol. 2. Appendix K.2)."
Page 93	Line 5	Change "inact" to "intact"
Page 110	Lines 4-7	Delete the sentence "For the EOC-4 core, IB ... at the core mid-plane."

Page 113	Note 40, line 2	Change "1956" to "1950"
Page 117	Table 2 heading	Change "BOC" to "BOC-1", Change "EOC" to "EOC-4"
Page 121	Line 14 of conclusion	Change "an" to "a"
Page 135	Next to last line	Change "TI-033-120-130" to "TI-001-130-025"
Page 140	Line 2 of reference 2	Change "1975" to "1972"

APPLICANTS' RESPONSE TO BOARD AREAS OF
INTEREST 5 AND 6 (EXHIBIT 95) ERRATA

Page 13	Lines 1, 2	Delete "on Page 12", replace with "below"
Page 16	Line 1	Insert "a" before "system"
Page 24	Line 23	Insert comma after "requirements"
Page 24	last line	Add "assembly" after "and"
Page 26	Line 2	Insert comma after "finally"
Page 26	Line 10	Insert comma after "instructions"
Page 28	First paragraph, line 9	Change "owner" to "Owner"
Page 30	Line 3	Change "programs" to "activities"
Page 31	Second paragraph, line 5	Change "in" to "at"
Page 32	Line 3	Insert comma after "ORNL"
Page 32	Line 13, 14	Change "quality assurance program to "Quality Assurance Program"
Page 32	Line 15	Change "owner" to "Owner"
Page 32	Line 19	Change "project quality assurance program" to "Project Quality Assurance Program."
Page 32	Line 22	Change "owner" to "Owner".
Page 32	Line 23	Change "project quality assurance program." to "Project Quality Assurance Program."
Page 34	First paragraph, line 1	Change "January 1980" to "April 1983"

Page 34	First paragraph, line 7	Add after "to the Project." the sentence "From January 1980 to April 1983, I held this position in an acting capacity."
Page 35	Line 18	Change "project" to "Project"
Page 35	Line 20	Change "project" to "Project"

UNITED STATES OF AMERICA
NUCLEAR REGULATORY COMMISSION
BEFORE THE ATOMIC SAFETY AND LICENSING BOARD

In the Matter of
UNITED STATES DEPARTMENT OF ENERGY
PROJECT MANAGEMENT CORPORATION
TENNESSEE VALLEY AUTHORITY
(Clinch River Breeder Reactor Plant)

Docket No. 50-537

CERTIFICATE OF SERVICE

Service has been effected on this date by personal
delivery or first-class mail to the following:

Marshall E. Miller, Esquire
Chairman
Atomic Safety & Licensing Board
U. S. Nuclear Regulatory Commission
East-West Towers
4350 East-West Highway
Bethesda, Maryland 20814 (2 copies by hand)

Dr. Cadet H. Hand, Jr.
Director
Bodega Marine Laboratory
University of California
West Side Road
Bodega Bay, California 94923 (Air Express)

Mr. Gustave A. Linenberger
Atomic Safety & Licensing Board
U. S. Nuclear Regulatory Commission
East-West Towers
4350 East-West Highway
Bethesda, Maryland 20814 (by hand)

Stuart Treby, Esq.
Sherwin E. Turk, Esq.
Elaine I. Chan, Esq.
Geary S. Mizuno, Esq.
Office of Executive Legal Director
U. S. Nuclear Regulatory Commission
Maryland National Bank Building
7735 Old Georgetown Road
Bethesda, Maryland 20014 (2 copies by hand)

*Atomic Safety & Licensing Appeal Board
U. S. Nuclear Regulatory Commission
Washington, D. C. 20555

*Atomic Safety & Licensing Board Panel
U. S. Nuclear Regulatory Commission
Washington, D. C. 20555

*Docketing & Service Section
Office of the Secretary
U. S. Nuclear Regulatory Commission
Washington, D. C. 20555 (original, 3 copies, and
return copy)

William M. Leech, Jr., Attorney General
William B. Hubbard, Chief
Deputy Attorney General
Michael D. Pearigen, Assistant
Attorney General
State of Tennessee
Office of the Attorney General
450 James Robertson Parkway
Nashville, Tennessee 37219

Oak Ridge Public Library
Civic Center
Oak Ridge, Tennessee 37830

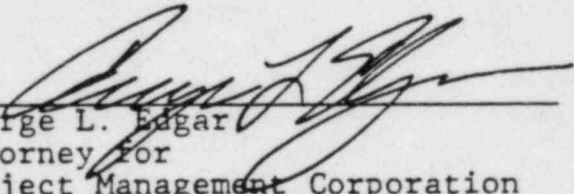
Herbert S. Sanger, Jr., Esquire
Lewis E. Wallace, Esquire
W. Walter LaRoche, Esquire
James F. Burger, Esquire
Edward J. Vigluicci, Esquire
Office of the General Counsel
Tennessee Valley Authority
400 West Summit Hill Drive
Knoxville, Tennessee 37902 (2 copies)

Lawson McGhee Public Library
500 West Church Street
Knoxville, Tennessee 37902

William E. Lantrip, Esquire
Attorney for the City of Oak Ridge
Municipal Building
Post Office Box 1
Oak Ridge, Tennessee 37830

Leon Silverstrom, Esquire
William D. Luck, Esquire
U. S. Department of Energy
1000 Independence Avenue, S.W.
Room 6B-256--Forrestal Building
Washington, D. C. 20585 (2 copies by hand)

Commissioner James Cotham
Tennessee Department of Economic
and Community Development
Andrew Jackson Building, Suite 10007
Nashville, Tennessee 37219



George L. Edgar
Attorney for
Project Management Corporation

DATED: August 5, 1983

*/ Denotes hand delivery to 1717 "H" Street, N.W., Washington, D.C.