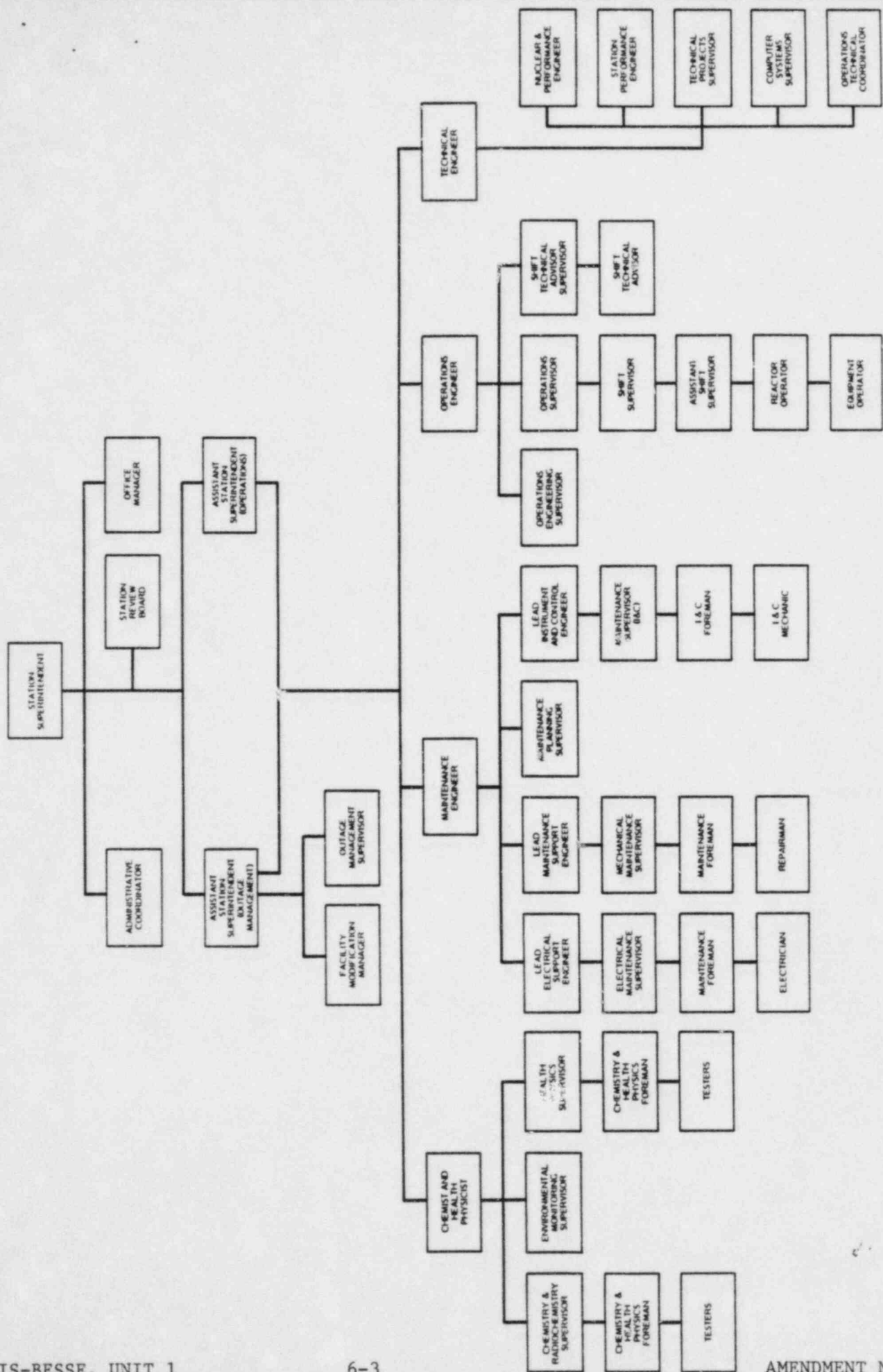


CHART
Figure 6.2-1



DAVIS-BESSE NUCLEAR POWER STATION

ORGANIZATION

Figure 6.2-2

ADMINISTRATIVE CONTROLS

COMPOSITION

6.5.2.2 The Company Nuclear Review Board shall be composed of the:

Chairman:	Director, Fossil Facilities Engineering and Construction
Member:	General Superintendent, Transmission and Substations
Member:	Superintendent, Davis-Besse Station
Member:	Director, Nuclear Services
Member:	Director, Quality Assurance
Member:	General Superintendent, Fossil Generation Facilities
Member:	Director, Nuclear Safety
Member:	Director, Nuclear Facility Engineering
Member:	Others as deemed advisable by the CNRB Chairman*

ALTERNATES

6.5.2.3 All alternate members shall be appointed in writing by the CNRB Chairman to serve on a temporary basis; however, no more than two alternates shall participate as voting members in CNRB activities at any one time.

CONSULTANTS

6.5.2.4 Consultants shall be utilized as determined by the CNRB Chairman to provide expert advice to the CNRB.

MEETING FREQUENCY

6.5.2.5 The CNRB shall meet at least once per calendar quarter during the initial year of unit operation following fuel loading and at least once per six months thereafter.

QUORUM

6.5.2.6 A quorum of CNRB shall consist of the Chairman or his designated alternate and at least half of the appointed CNRB members or their alternates. No more than a minority of the quorum shall have line responsibility for operation of the facility.

*Others as deemed advisable by the CNRB chairman, who are appointed to the Company Nuclear Review Board shall have an academic degree in an Engineering or Physical Science Field; and in addition, shall have a minimum of five years of technical experience, of which a minimum of three years shall be in one or more of the areas specified in Specification 6.5.2.1.

COMPOSITION

6.5.1.2 The Station Review Board shall be composed of the:

Chairman:	Assistant Station Superintendent
Member:	Operations Engineer
Member:	Technical Engineer
Member:	Maintenance Engineer
Member:	Lead Instrument and Control Engineer
Member:	Nuclear and Performance Engineer
Member:	Chemist and Health Physicist
Member:	Nuclear Reliability Manager
Member:	Station Superintendent

ALTERNATES

6.5.1.3 All alternate members shall be appointed in writing by the SRB Chairman to serve on a temporary basis; however, no more than two alternates shall participate as voting members in SRB activities at any one time.

MEETING FREQUENCY

6.5.1.4 The SRB shall meet at least once per calendar month and as convened by the SRB Chairman or his designated alternate.

QUORUM

6.5.1.5 A quorum of the SRB shall consist of the Chairman or his designated alternate and four members including alternates.

RESPONSIBILITIES

6.5.1.6 The Station Review Board shall be responsible for:

- a. Review of 1) all procedures required by Specification 6.8 and changes thereto, 2) any other proposed procedures or changes thereto as determined by the Station Superintendent to affect nuclear safety.
- b. Review of all proposed tests and experiments that affect nuclear safety.