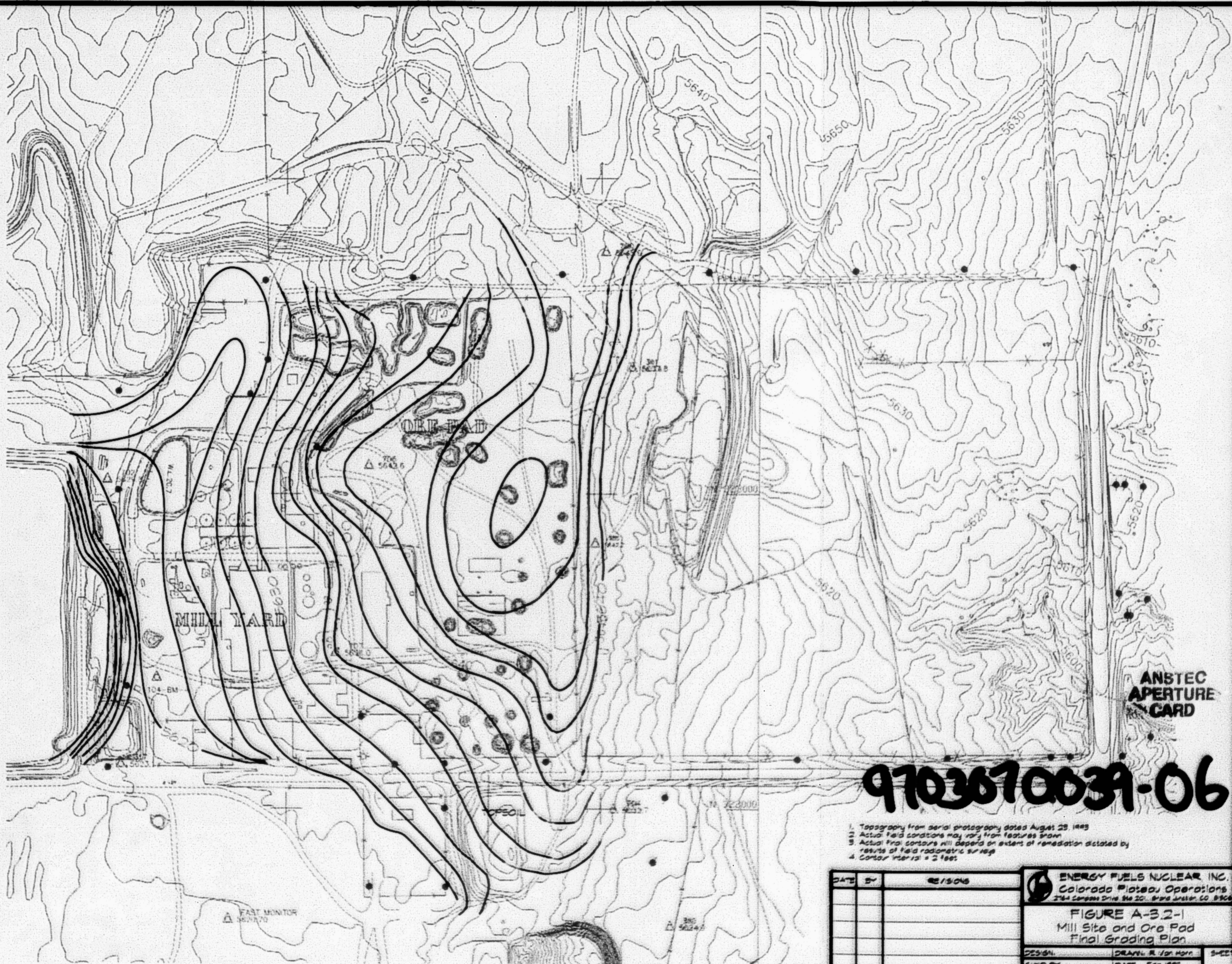


International Uranium (USA) Corporation
White Mesa Mill

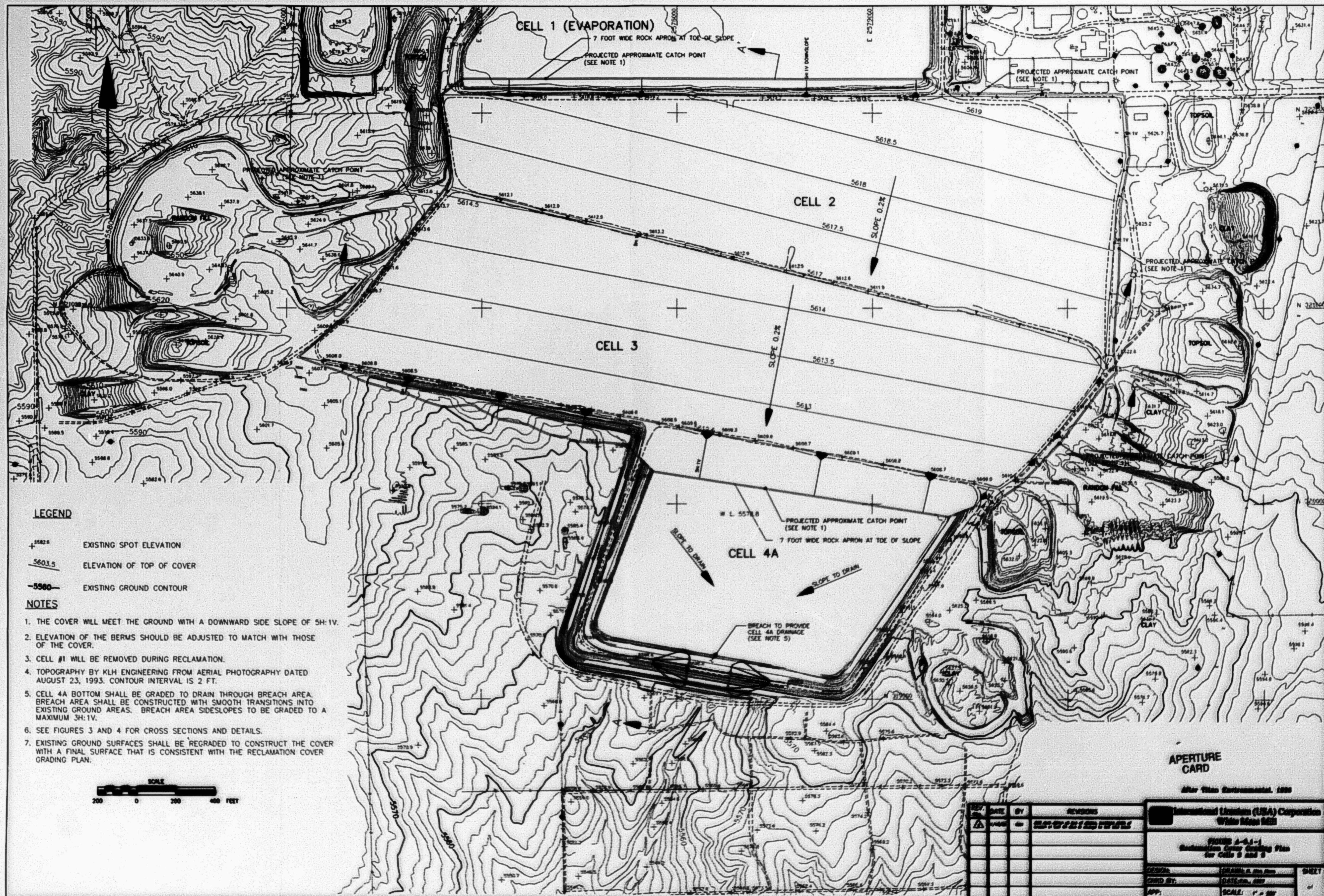
ROCK SAMPLING AND TESTING PROGRAM
EXHIBIT A

DESIGN:	DRAWN: SAK	SHEET 1
CHD BY:	DATE: 9/8/90	
APP: RRR	SCALE: 1"=50'	

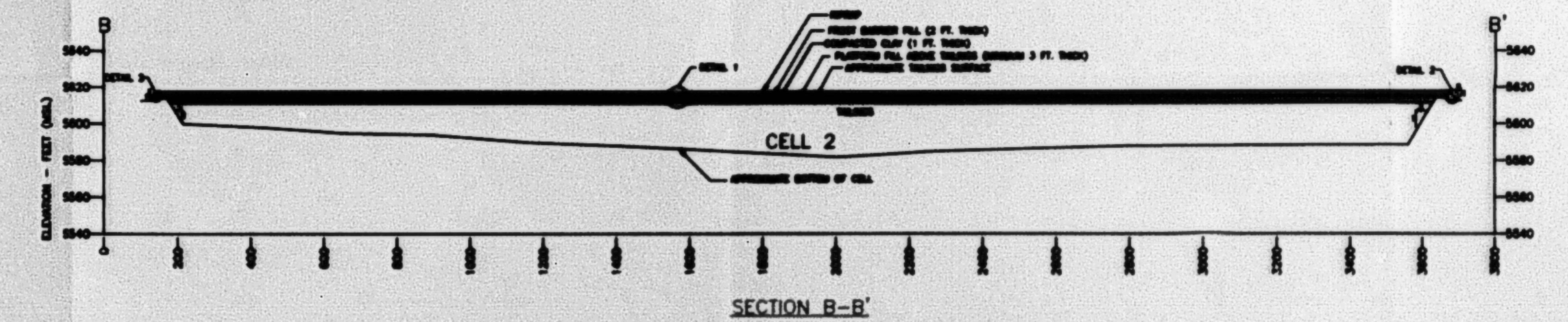


1. Topography from aerial photography dated August 29, 1983
2. Actual field contours may vary from features shown
3. Actual final contours will depend on extent of remediation dictated by results of field radiometric survey
4. Contour interval is 2 feet

DATE	BY	REVISIONS	ENERGY FUELS NUCLEAR, INC. Colorado Plateau Operations 264 Canyon Drive, Ste 201, Grand Junction, CO 81506	FIGURE A-32-1 Mill Site and Ore Pad Final Grading Plan	DESIGN: <u>DR. J. J. HORN</u> CHECKED BY: <u>DATE: FEB 1987</u> APP: <u>SCALE: 1" = 200'</u>	SHEET of



9611300237-01



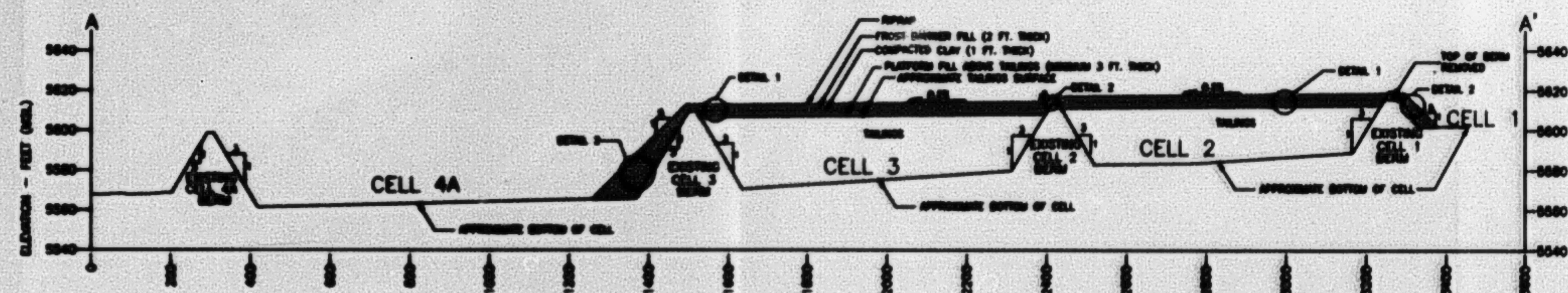
NOTES:

1. FOR POND SURFACE AND SIDE SLOPE COVER DETAILS SEE FIGURE 3.
2. POND BOTTOM INFERRED FROM 'CELL 4 PHASE A AND PHASE B PLAN', WESTERN ENGINEERING INC., (JANUARY 17, 1989).
3. SEE FIGURES 1 AND 2 FOR CROSS SECTIONS LOCATIONS
4. EXISTING GROUND SURFACES SHALL BE REGRADED TO CONSTRUCT THE COVER WITH A FINAL SURFACE THAT IS CONSISTENT WITH THE RECLAMATION COVER GRADING PLAN.

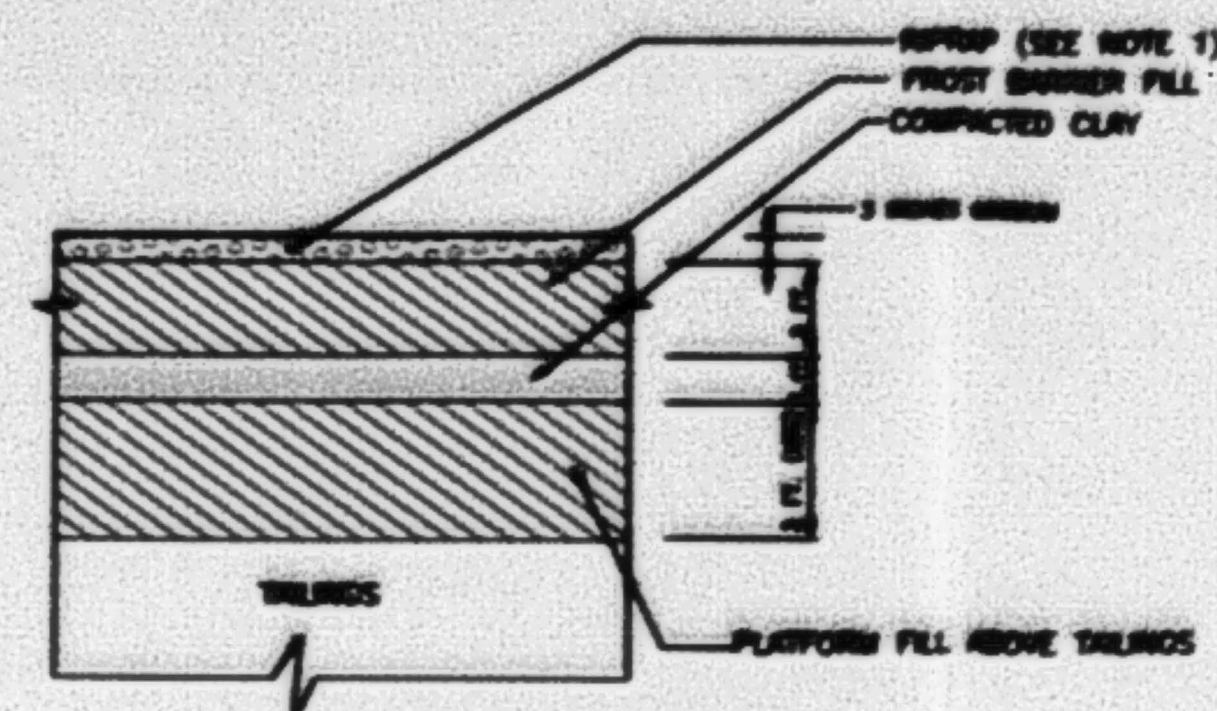
9811300237-03

REV.	DATE	BY	REVISION
1	10/1/89	W.E.	RECLAMATION COVER CROSS SECTIONS
2	10/1/89	W.E.	RECLAMATION COVER CROSS SECTIONS
3	10/1/89	W.E.	RECLAMATION COVER CROSS SECTIONS
4	10/1/89	W.E.	RECLAMATION COVER CROSS SECTIONS
5	10/1/89	W.E.	RECLAMATION COVER CROSS SECTIONS
6	10/1/89	W.E.	RECLAMATION COVER CROSS SECTIONS
7	10/1/89	W.E.	RECLAMATION COVER CROSS SECTIONS
8	10/1/89	W.E.	RECLAMATION COVER CROSS SECTIONS
9	10/1/89	W.E.	RECLAMATION COVER CROSS SECTIONS
10	10/1/89	W.E.	RECLAMATION COVER CROSS SECTIONS

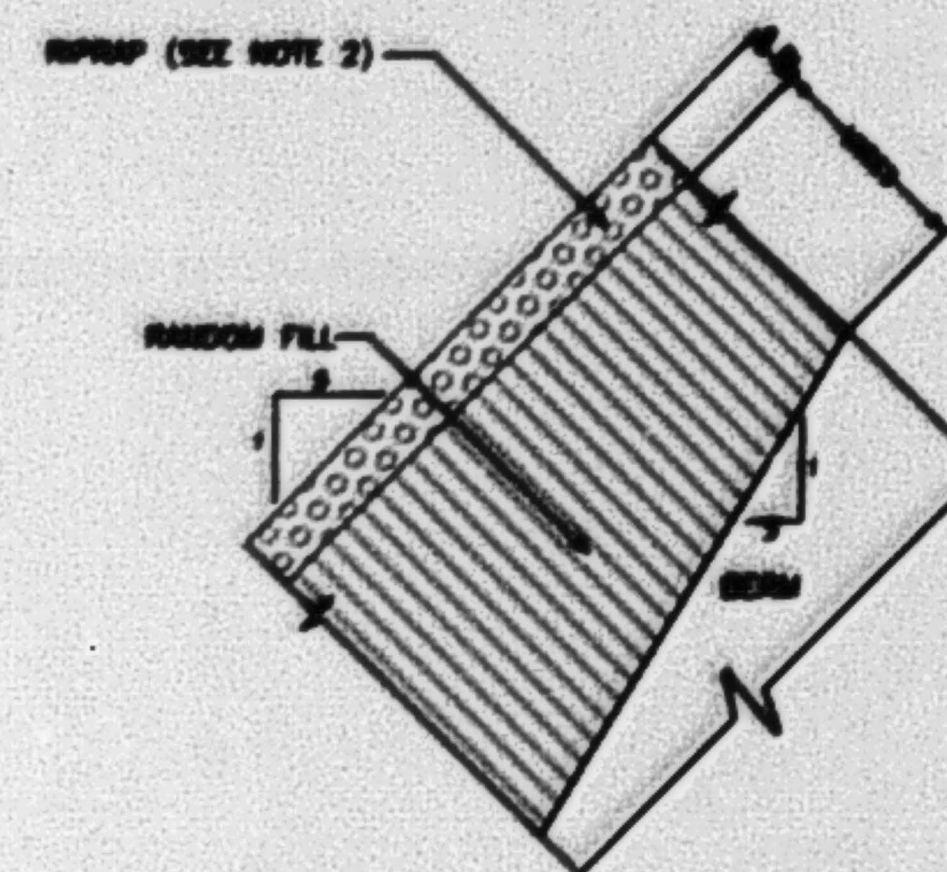
FIGURE A-5.1-3 Reclamation Cover Cross Sections	
DESIGN	W.E.
CHECKED BY	W.E.
APP.	W.E.
SCALE	AS SHOWN



SECTION A-A' (WITH COVER ON CELLS 2 & 3)



DETAIL 1: COVER DETAIL FOR POND SURFACE AREAS
(NOT TO SCALE)

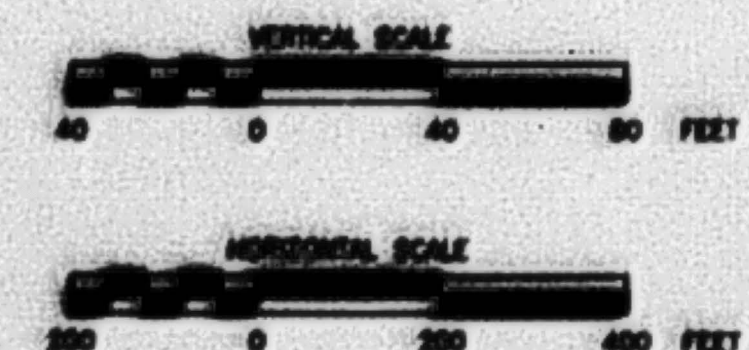


DETAIL 2: COVER DETAIL FOR SIDE SLOPES
(NOT TO SCALE)

NOTES:

1. RIPRAP PLACED ON THE TOP OF COVER WILL CONSIST OF ROCK WITH D50 MINIMUM OF 0.5 INCHES.
2. RIPRAP PLACED ON THE SIDE SLOPES OF COVER WILL CONSIST OF ROCK WITH D50 MINIMUM OF 3.25 INCHES.
3. POND BOTTOM ELEVATIONS INFERRED FROM 'CELL 4 PHASE A AND PHASE B PLAN', WESTERN ENGINEERS INC., (JANUARY 17, 1989).
4. SEE FIGURES 1 AND 2 FOR CROSS SECTION LOCATIONS
5. EXISTING GROUND SURFACES SHALL BE REGRADED TO CONSTRUCT THE COVER WITH A FINAL SURFACE THAT IS CONSISTENT WITH THE RECLAMATION COVER GRADING PLAN.

APERTURE
CARD



9811300237-02

REV.	DATE	BY	REVISIONS	International Uranium (USA) Corporation White Mesa Mill	
1			Initial design and construction	FIGURE A-5.1-2 Reclamation Cover and Cross Sections	SHEET
2			Revised design and construction	DESIGN: A. J. J. J.	1
3			Revised design and construction	DATE: Feb. 1989	
4			Revised design and construction	APP: A. J. J. J.	
5			Revised design and construction	SCALE: As Shown	