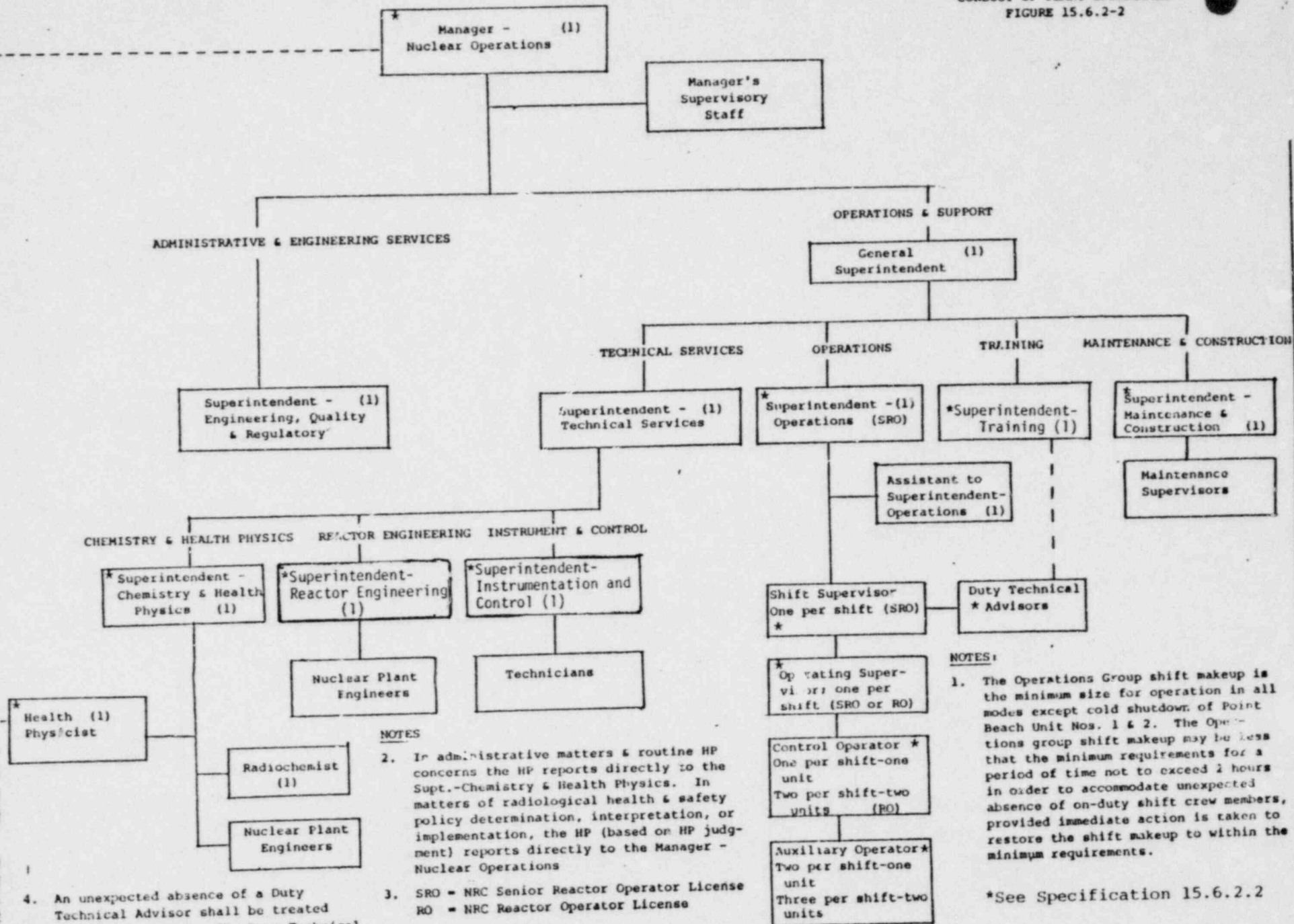


CONDUCT OF PLANT OPERATIONS  
FIGURE 15.6.2-2



NOTES

2. In administrative matters & routine HP concerns the HP reports directly to the Supt.-Chemistry & Health Physics. In matters of radiological health & safety policy determination, interpretation, or implementation, the HP (based on HP judgment) reports directly to the Manager - Nuclear Operations
3. SRO = NRC Senior Reactor Operator License  
RO = NRC Reactor Operator License
4. An unexpected absence of a Duty Technical Advisor shall be treated similar to Note 1. The Duty Technical Advisor is located on-site on ten minute call to the control room.

NOTES:

1. The Operations Group shift makeup is the minimum size for operation in all modes except cold shutdown of Point Beach Unit Nos. 1 & 2. The Operations group shift makeup may be less than the minimum requirements for a period of time not to exceed 2 hours in order to accommodate unexpected absence of on-duty shift crew members, provided immediate action is taken to restore the shift makeup to within the minimum requirements.

\*See Specification 15.6.2.2

8106290117

POOR ORIGINAL