

REV.	DESCRIPTION	DATE	BY	CHKD BY	DATE
18	CLOSURE OF SUB-AREA 11 TO REFLECT CURRENT STATUS.	10/15/01	JE	WR	10/15/01
17	MODIFIED SUB-AREA 11 TO REFLECT CURRENT STATUS.	01/31/00	JE	WR	01/31/00
16	MODIFIED SOUTHERN BOUNDARY OF SUB-AREA C.	10/13/99	JE	WR	10/13/99
15	ADDED FENCES IN SUB-AREA L, L.A., SUB-AREA L, L.A., etc.	6/15/99	JE	WR	6/15/99
14	MODIFIED FENCE LINES IN SUB-AREA F (BURIAL AREA #1).	3/1/99	JE	WR	3/1/99
13	MODIFIED SUB-AREA D (W/2) NORTHERN BOUNDARY.	1/2/99	JE	WR	1/2/99
12	MODIFIED SOUTHERN BOUNDARY.	9/20/98	JE	WR	9/20/98
11	MODIFIED BOUNDARY BETWEEN SUB-AREAS D & H.	8/20/98	JE	WR	8/20/98
10	ADDED WELLS 1342, 1343 & 1344.	3/13/98	JE	WR	3/13/98
9	MODIFIED BOUNDARY BETWEEN SUB-AREAS Q & H.	1/3/97	JE	WR	1/3/97
8	URANIUM WASTE POND #1 ADDED TO SUB-AREA A.	6/27/97	JE	WR	6/27/97
7	ADDED BURIAL AREA #3 & WELLS 1337 THRU 1341.	5/2/97	JE	WR	5/2/97
6	PHASE II AFFECTED AREA MODIFIED IN SUB-AREA H & BOUNDARY CHANGE TO SUB-AREAS I & H.	12/10/96	JE	WR	12/10/96
5	PHASE II AFFECTED AREA MODIFIED TO MATCH GPS SURVEY DATA.	10/11/96	JE	WR	10/11/96
4	DRAWING REFLECTS NEW SURVEY DATA ON FENCE.	6/13/96	JE	WR	6/13/96
3	DRAWING REFLECTS NEW SURVEY DATA ON FENCES AND ROADS.	6/10/96	JE	WR	6/10/96
2	MODIFICATIONS TO PHASE I SUB-AREAS.	11/13/95	JE	WR	11/13/95
1	ADDED PROPERTY SOUTH OF WEST LANE MODIFIED NORTHERN BOUNDARIES.	7/11/95	JE	WR	7/11/95
0	DRAWING ISSUED.	6/1/95	JE	WR	6/1/95

DATE

10/10/94

BY

WR

DATE

APPROVED

SCALE

AS SHOWN

UNAFFECTED AREA (PHASE I)
(Released from License 1996)

UNAFFECTED AREA (PHASE II)

AFFECTED AREA (PHASE II)

AFFECTED AREA (PHASE III)

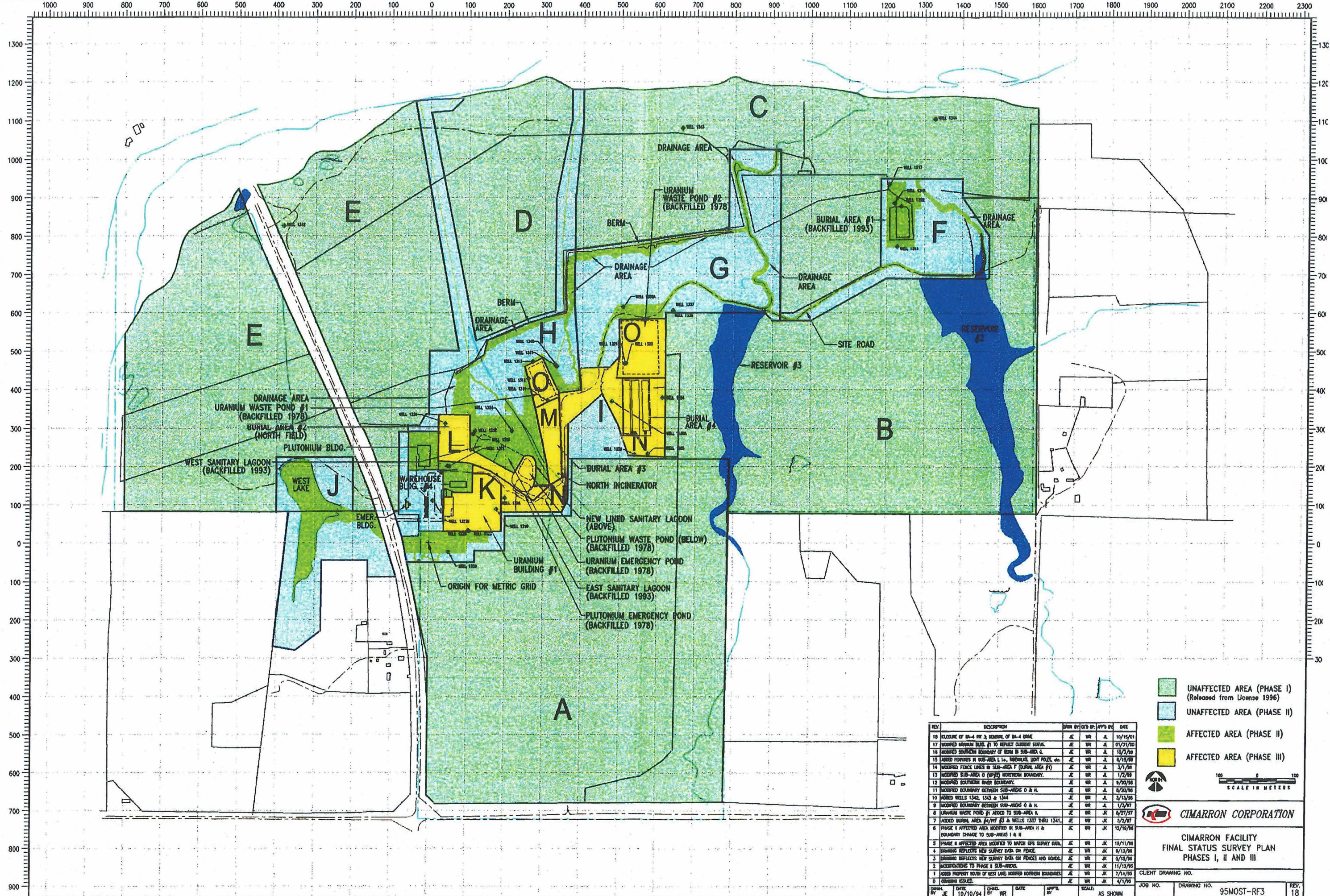
100 0 100

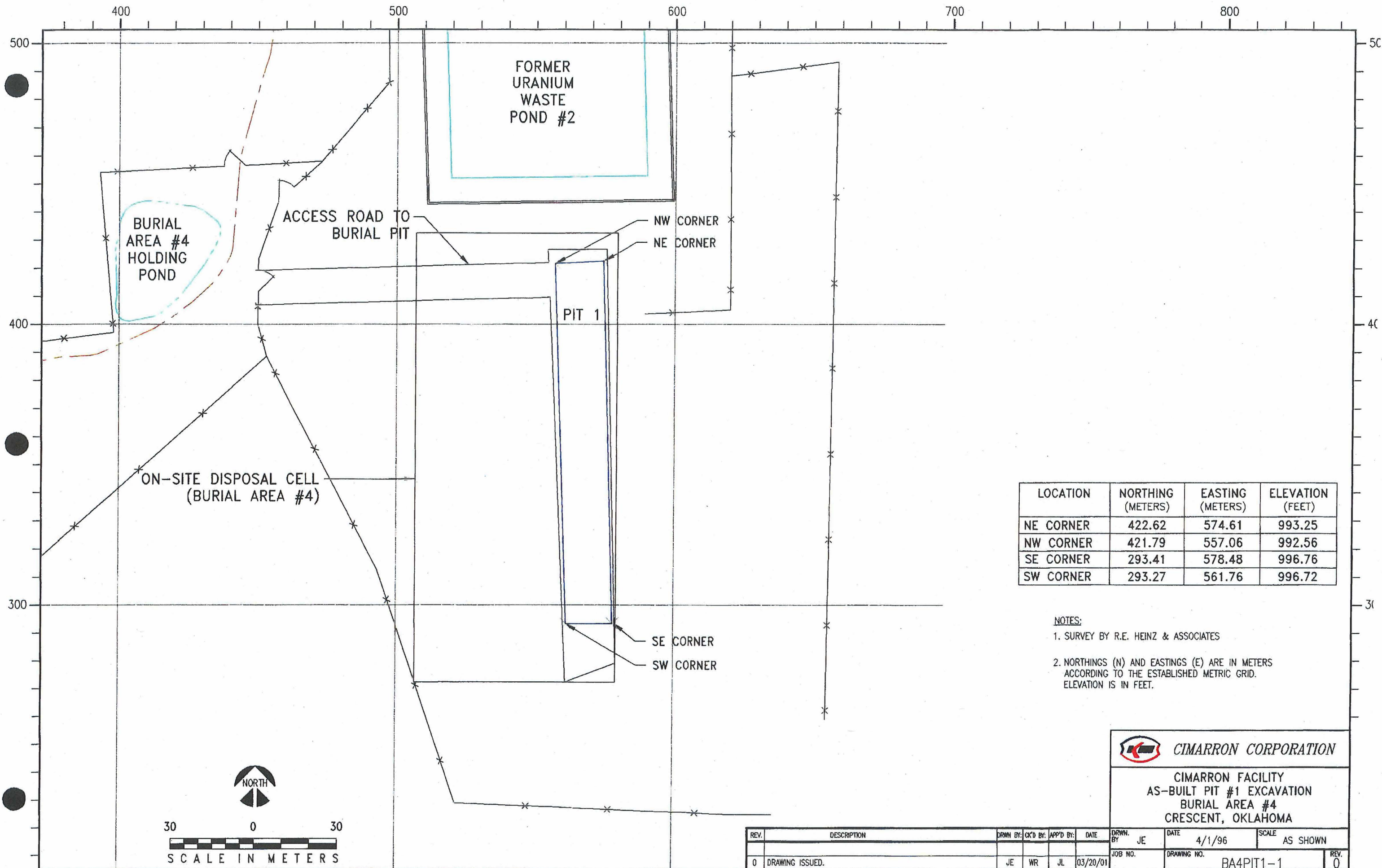
SCALE IN METERS

CIMARRON CORPORATION

CIMARRON FACILITY
FINAL STATUS SURVEY PLAN
PHASES I, II AND III


CLIENT DRAWING NO.
JOB NO.
DRAWING NO. 95MOST-RF3
REV. 18





LOCATION	NORTHING (METERS)	EASTING (METERS)	ELEVATION (FEET)
NE CORNER	422.62	574.61	993.25
NW CORNER	421.79	557.06	992.56
SE CORNER	293.41	578.48	996.76
SW CORNER	293.27	561.76	996.72

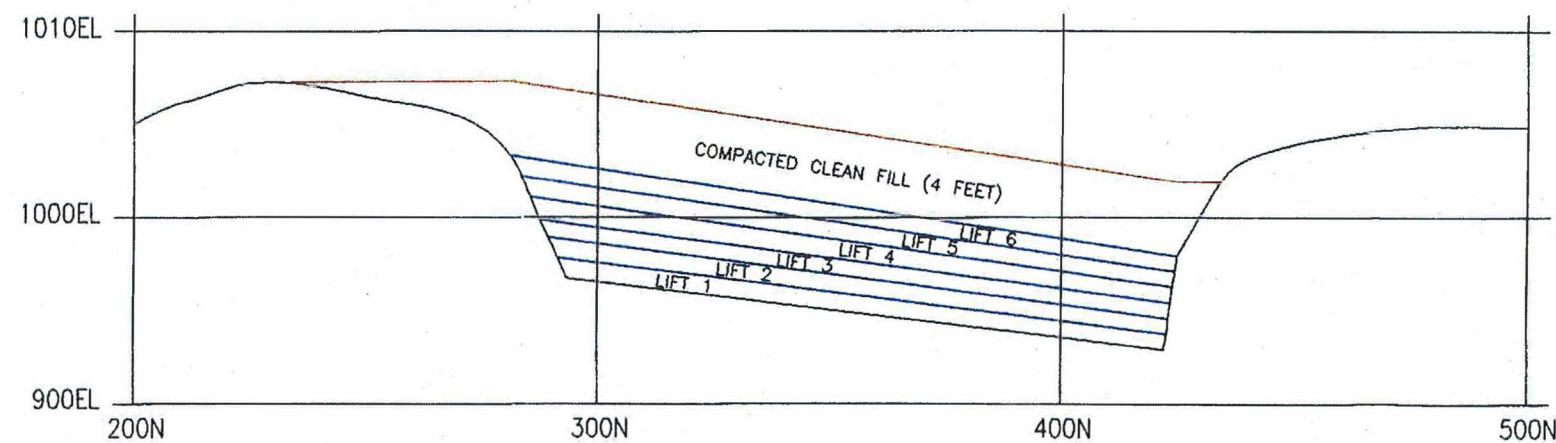
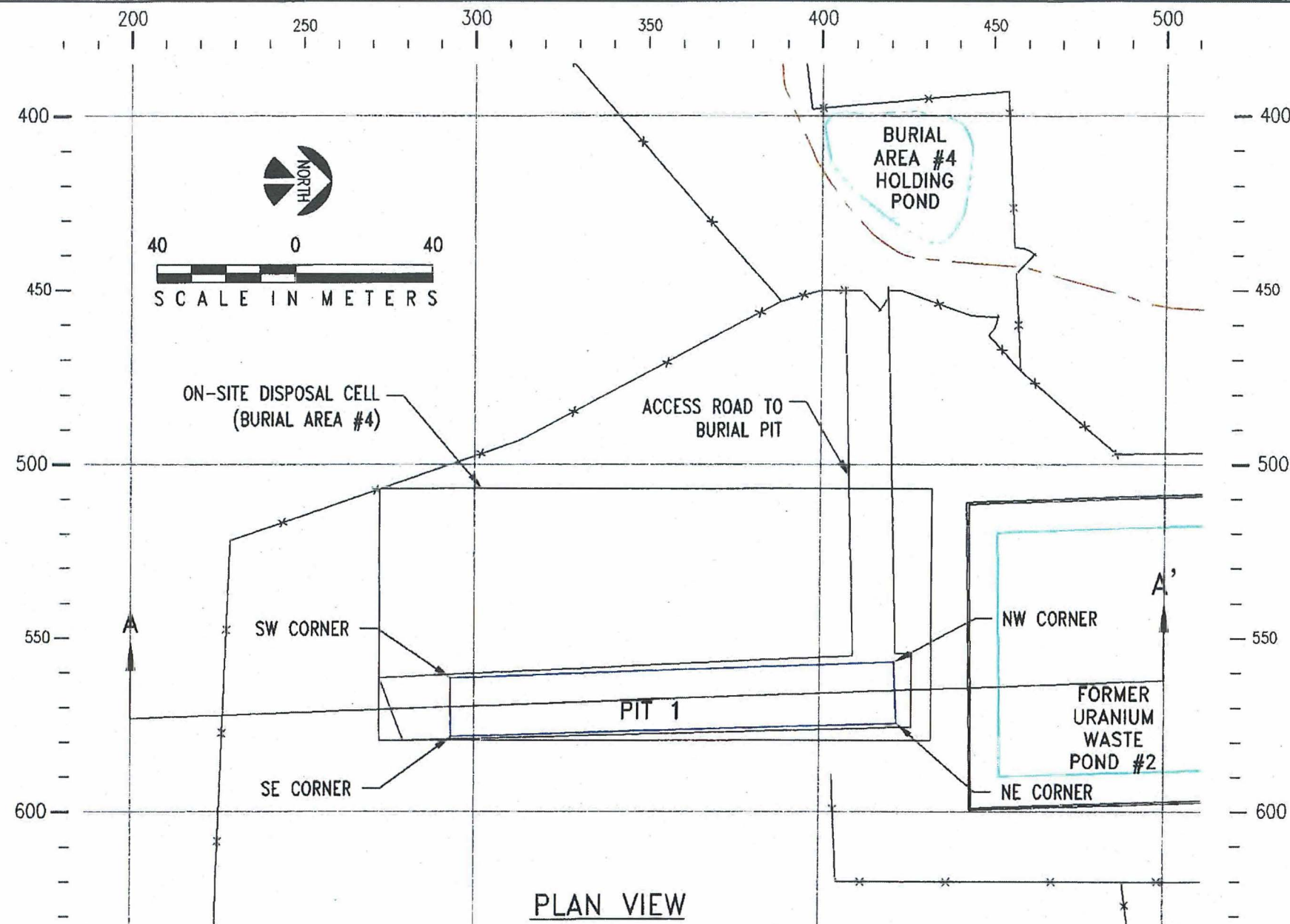
- NOTES:
1. SURVEY BY R.E. HEINZ & ASSOCIATES
 2. NORTHINGS (N) AND EASTINGS (E) ARE IN METERS
ACCORDING TO THE ESTABLISHED METRIC GRID.
ELEVATION IS IN FEET.

**CIMARRON CORPORATION**

CIMARRON FACILITY
AS-BUILT PIT #1 EXCAVATION
BURIAL AREA #4
CRESCENT, OKLAHOMA

REV.	DESCRIPTION	DRWN. BY:	CHK'D BY:	APP'D BY:	DATE	DRWN. BY:	DATE	SCALE
0	DRAWING ISSUED.	JE	WR	JL	03/20/01	JE	4/1/96	AS SHOWN
						JOB NO.	DRAWING NO.	REV.
							BA4PIT1-1	0

.../SITE00/BurialArea4Pit1Plan



HORIZ. SCALE: 1" = 40 M
VERT. SCALE: 1" = 10 FT.

SECTION A-A'

LIFT NUMBER	LOCATION	NORTHING (METERS)	EASTING (METERS)	ELEVATION (FEET)
AS-BUILT PIT EXCAVATION	NE CORNER	422.62	574.61	993.25
	NW CORNER	421.79	557.06	992.56
	SE CORNER	293.41	578.48	996.76
	SW CORNER	293.27	561.76	996.72
LIFT 1	NE CORNER	423.23	574.74	994.01
	NW CORNER	422.06	556.71	993.48
	SE CORNER	291.69	578.81	997.73
	SW CORNER	291.10	561.55	997.93
LIFT 2	NE CORNER	423.84	574.87	994.76
	NW CORNER	422.34	556.35	994.39
	SE CORNER	289.97	579.15	998.71
	SW CORNER	288.93	561.35	999.14
LIFT 3	NE CORNER	424.45	575.01	995.52
	NW CORNER	422.61	556.00	995.31
	SE CORNER	288.25	579.49	999.68
	SW CORNER	286.76	561.15	1000.35
LIFT 4	NE CORNER	425.06	575.14	996.28
	NW CORNER	422.88	555.64	996.23
	SE CORNER	286.53	579.82	1000.65
	SW CORNER	284.59	560.94	1001.56
LIFT 5	NE CORNER	425.67	575.27	997.04
	NW CORNER	423.15	555.28	997.14
	SE CORNER	284.81	580.16	1001.62
	SW CORNER	282.42	560.74	1002.76
LIFT 6	NE CORNER	426.28	575.41	997.80
	NW CORNER	423.43	554.93	998.06
	SE CORNER	283.09	580.50	1002.60
	SW CORNER	280.25	560.54	1003.97
TOTAL VOLUME PLACED IN PIT #1: 164,518 cu. ft.				

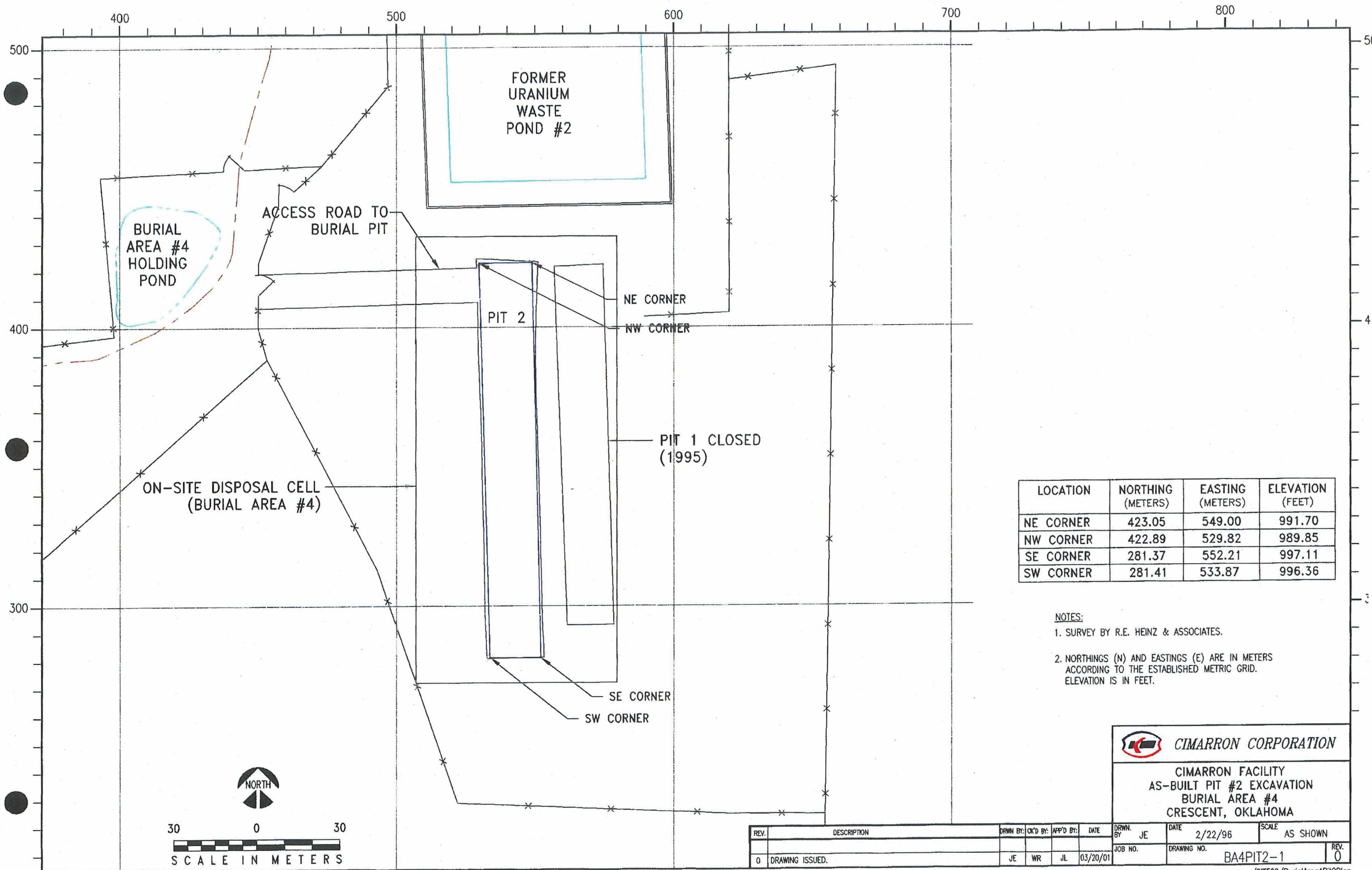
NOTES:

1. SURVEY BY R.E. HEINZ & ASSOCIATES.
2. NORTHINGS (N) AND EASTINGS (E) ARE IN METERS ACCORDING TO THE ESTABLISHED METRIC GRID. ELEVATION IS IN FEET.

CIMARRON CORPORATION
CIMARRON FACILITY
PLAN & ELEVATION, WASTE PLACEMENT PIT #1
BURIAL AREA #4
CRESCENT, OKLAHOMA


REV.	DESCRIPTION	DRWN BY:	CK'D BY:	APP'D BY:	DATE	DRWN BY:	DATE	SCALE
0	DRAWING ISSUED.	JE	WR	JL	03/20/01	JE	3/12/2000	AS SHOWN
						JOB NO.	DRAWING NO.	REV.
							BA4PIT1-2	0

.../SITE00/BurialArea4Pit1Section



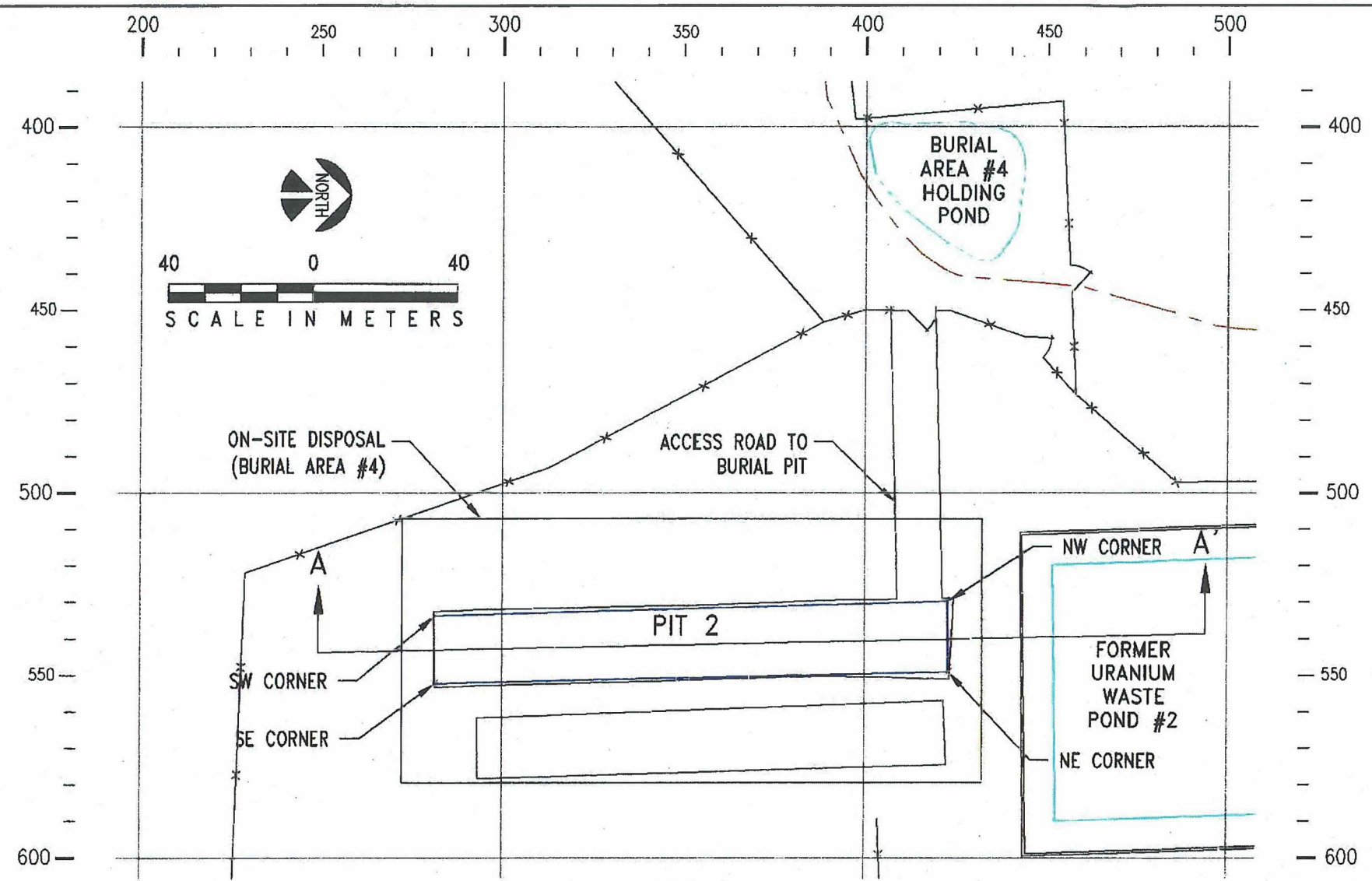
LOCATION	NORTHING (METERS)	EASTING (METERS)	ELEVATION (FEET)
NE CORNER	423.05	549.00	991.70
NW CORNER	422.89	529.82	989.85
SE CORNER	281.37	552.21	997.11
SW CORNER	281.41	533.87	996.36

- NOTES:
- SURVEY BY R.E. HEINZ & ASSOCIATES.
 - NORTHINGS (N) AND EASTINGS (E) ARE IN METERS
ACCORDING TO THE ESTABLISHED METRIC GRID.
ELEVATION IS IN FEET.

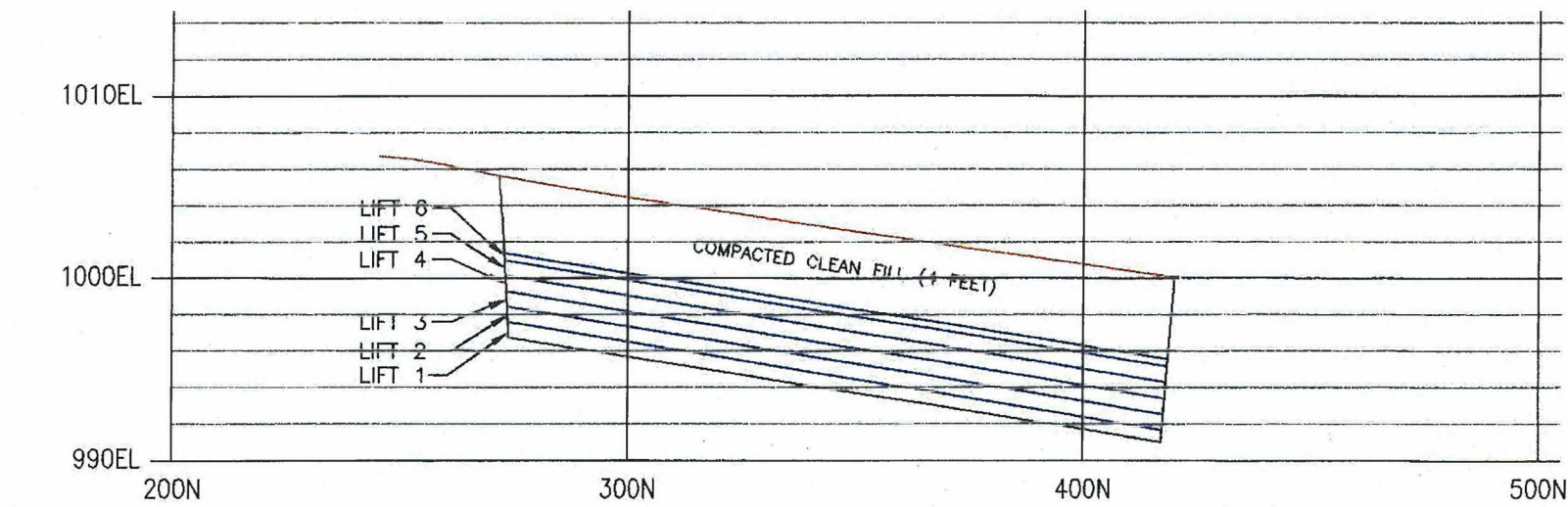
 **CIMARRON CORPORATION**

CIMARRON FACILITY
AS-BUILT PIT #2 EXCAVATION
BURIAL AREA #4
CRESCENT, OKLAHOMA

REV.	DESCRIPTION	DRWN BY:	CHK'D BY:	APP'D BY:	DATE	DRWN BY:	DATE	SCALE
0	DRAWING ISSUED.	JE	WR	JL	03/20/01	JE	2/22/96	AS SHOWN
						JOB NO.	DRAWING NO.	REV.
							BA4PIT2-1	0



PLAN VIEW



SECTION A-A'

HORIZ. SCALE: 1" = 40 M
VERT. SCALE: 1" = 10 FT.

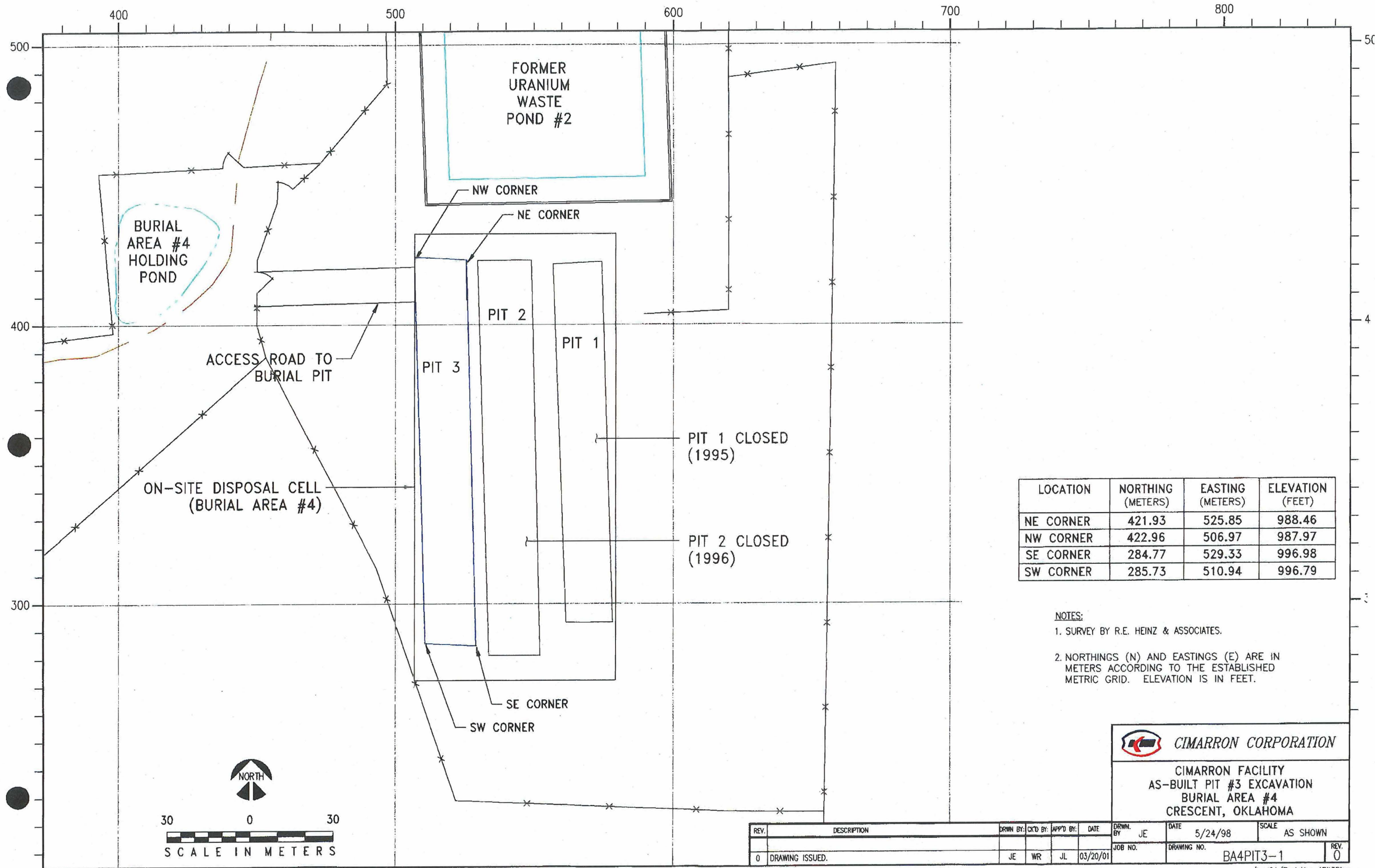
LIFT NUMBER	LOCATION	NORTHING (METERS)	EASTING (METERS)	ELEVATION (FEET)
AS-BUILT PIT EXCAVATION	NE CORNER	423.05	549.00	991.70
	NW CORNER	422.89	529.82	989.85
	SE CORNER	281.37	552.21	997.11
	SW CORNER	281.41	533.87	996.36
LIFT 1	NE CORNER	423.22	549.01	992.49
	NW CORNER	422.97	529.74	990.81
	SE CORNER	281.59	552.49	997.82
	SW CORNER	281.55	534.11	997.34
LIFT 2	NE CORNER	423.40	549.02	993.28
	NW CORNER	423.06	529.67	991.77
	SE CORNER	281.82	552.77	998.52
	SW CORNER	281.70	534.35	998.33
LIFT 3	NE CORNER	423.57	549.04	994.07
	NW CORNER	423.15	529.60	992.73
	SE CORNER	282.04	553.05	999.23
	SW CORNER	281.84	534.60	999.31
LIFT 4	NE CORNER	423.74	549.05	994.86
	NW CORNER	423.24	529.52	993.69
	SE CORNER	282.26	553.33	999.93
	SW CORNER	281.98	534.84	1000.30
LIFT 5	NE CORNER	423.91	549.06	995.65
	NW CORNER	423.33	529.45	994.66
	SE CORNER	282.48	553.61	1000.64
	SW CORNER	282.12	535.08	1001.28
LIFT 6	NE CORNER	424.09	549.08	996.00
	NW CORNER	423.42	529.38	995.09
	SE CORNER	282.70	553.89	1000.96
	SW CORNER	282.26	535.33	1001.72
TOTAL VOLUME PLACED IN PIT #2: 155,950 cu. ft.				

- NOTES:
1. SURVEY BY R.E. HEINZ & ASSOCIATES.
 2. NORTHINGS (N) AND EASTINGS (E) ARE IN METERS ACCORDING TO THE ESTABLISHED METRIC GRID. ELEVATION IS IN FEET.

CIMARRON CORPORATION


CIMARRON FACILITY
PLAN & ELEVATION, WASTE PLACEMENT PIT #2
BURIAL AREA #4
CRESCENT, OKLAHOMA

REV.	DESCRIPTION	DRWN. BY	CK'D BY	APP'D BY	DATE	DRWN. BY	DATE	SCALE
0	DRAWING ISSUED.	JE	WR	JL	03/20/01	JE	3/15/2000	AS SHOWN
						JOB NO.	DRAWING NO.	REV.
							BA4PIT2-2	0



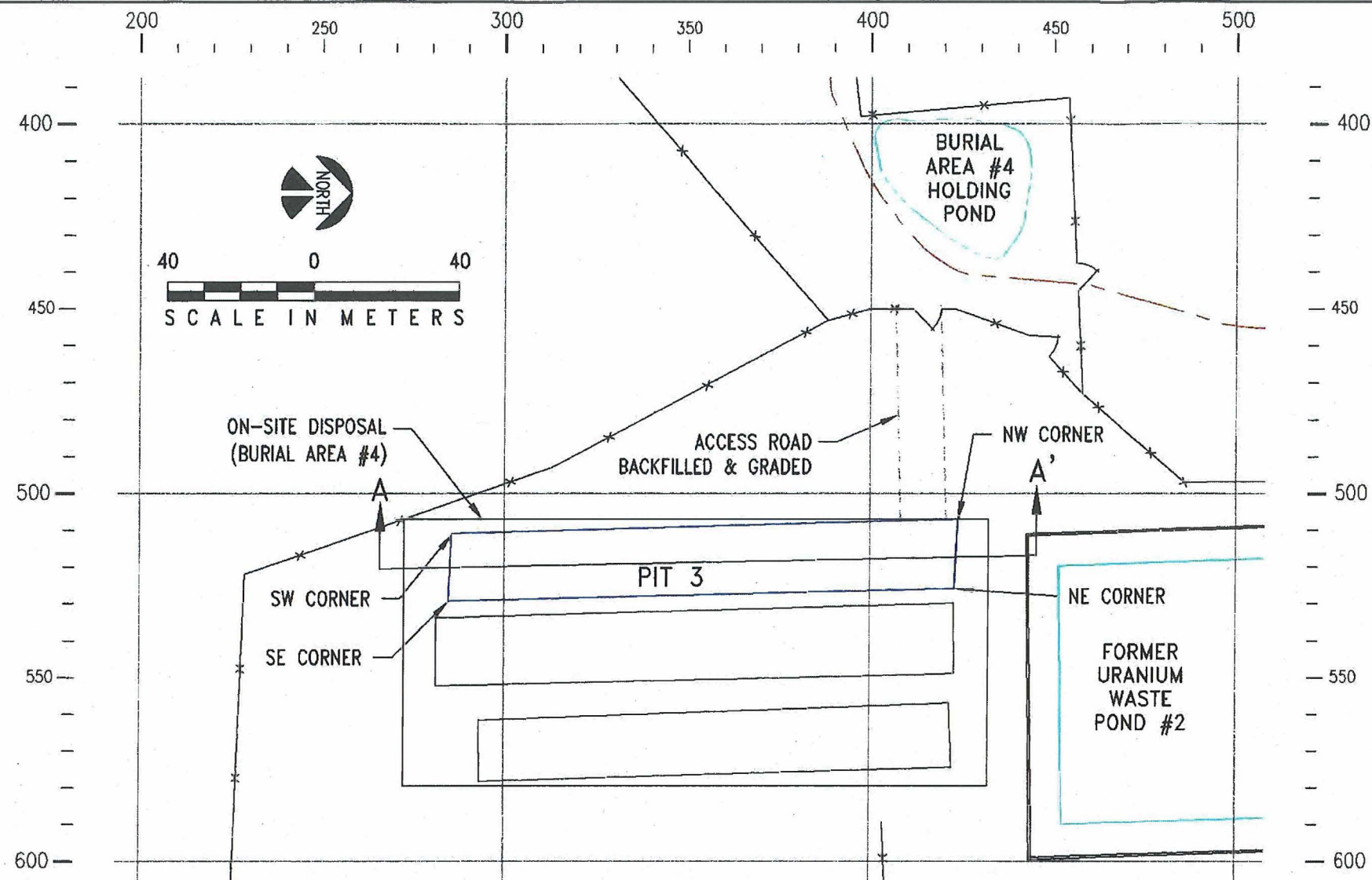
LOCATION	NORTHING (METERS)	EASTING (METERS)	ELEVATION (FEET)
NE CORNER	421.93	525.85	988.46
NW CORNER	422.96	506.97	987.97
SE CORNER	284.77	529.33	996.98
SW CORNER	285.73	510.94	996.79

NOTES:
1. SURVEY BY R.E. HEINZ & ASSOCIATES.
2. NORTHINGS (N) AND EASTINGS (E) ARE IN METERS ACCORDING TO THE ESTABLISHED METRIC GRID. ELEVATION IS IN FEET.

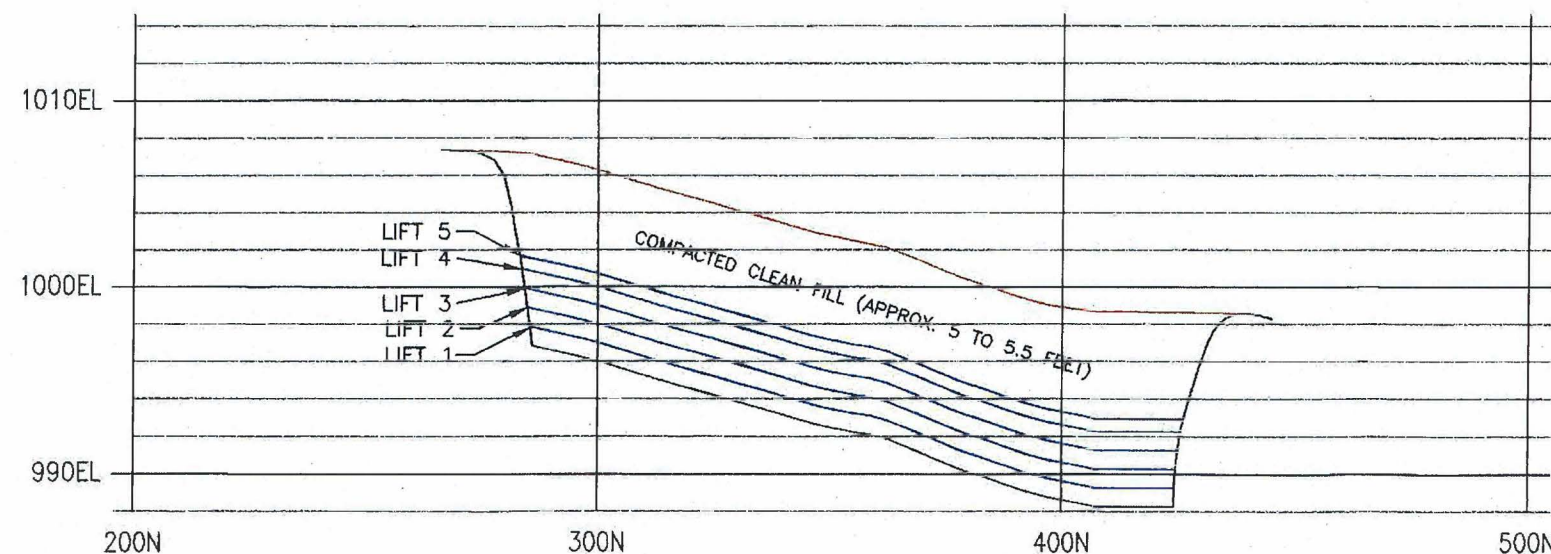
**CIMARRON CORPORATION**

CIMARRON FACILITY
AS-BUILT PIT #3 EXCAVATION
BURIAL AREA #4
CRESCENT, OKLAHOMA

REV.	DESCRIPTION	DRWN. BY:	CKD BY:	APP'D BY:	DATE	DRWN. BY:	DATE	SCALE
0	DRAWING ISSUED.	JE	WR	JL	03/20/01	JE	5/24/98	AS SHOWN
JOB NO.						DRAWING NO. BA4PIT3-1		
						REV. 0		



LIFT NUMBER	LOCATION	NORTHING (METERS)	EASTING (METERS)	ELEVATION (FEET)
AS-BUILT PIT EXCAVATION	NE CORNER	421.93	525.85	988.46
	NW CORNER	422.96	506.97	987.97
	SE CORNER	284.77	529.33	996.98
	SW CORNER	285.73	510.94	996.79
LIFT 1	NE CORNER	421.93	525.85	989.46
	NW CORNER	422.96	506.97	988.97
	SE CORNER	284.77	529.33	997.98
	SW CORNER	285.73	510.94	997.79
LIFT 2	NE CORNER	421.93	525.85	990.46
	NW CORNER	422.96	506.97	989.97
	SE CORNER	284.77	529.33	998.98
	SW CORNER	285.73	510.94	998.79
LIFT 3	NE CORNER	421.93	525.85	991.46
	NW CORNER	422.96	506.97	990.97
	SE CORNER	284.77	529.33	999.98
	SW CORNER	285.73	510.94	999.79
LIFT 4	NE CORNER	421.93	525.85	992.46
	NW CORNER	422.96	506.97	991.97
	SE CORNER	284.77	529.33	1000.98
	SW CORNER	285.73	510.94	1000.79
LIFT 5	NE CORNER	421.93	525.85	993.16
	NW CORNER	422.96	506.97	992.67
	SE CORNER	284.77	529.33	1001.68
	SW CORNER	285.73	510.94	1001.49
TOTAL VOLUME PLACED IN PIT #3: 131,718 cu. ft.				

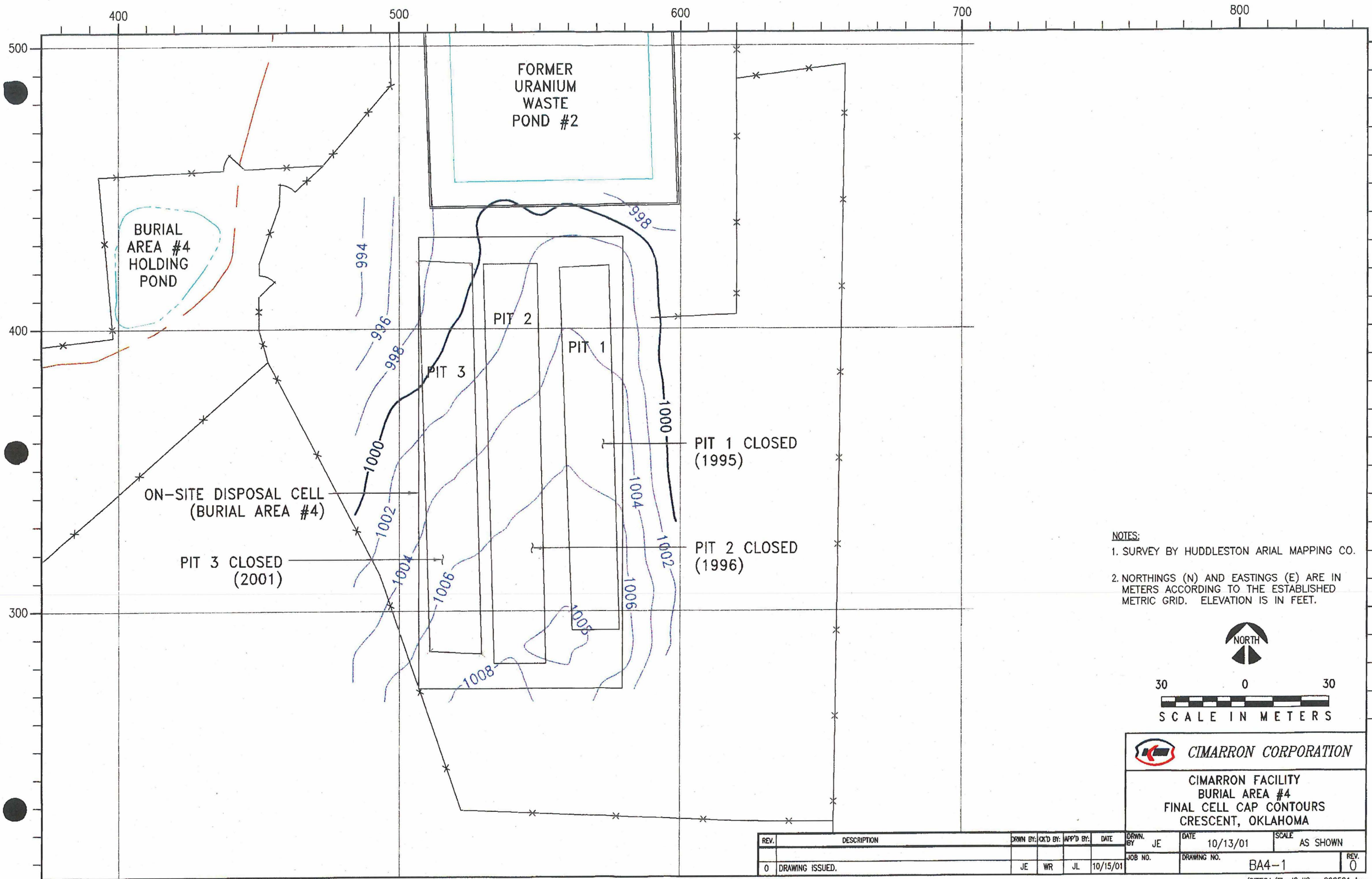


HORIZ. SCALE: 1" = 40 M
VERT. SCALE: 1" = 10 FT.

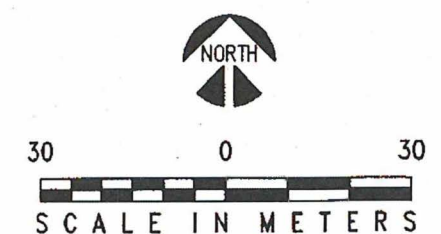
NOTES:


1. SURVEY BY R.E. HEINZ & ASSOCIATES, HUDDLESTON ARIAL MAPPING CO.
2. NORTHINGS (N) AND EASTINGS (E) ARE IN METERS ACCORDING TO THE ESTABLISHED METRIC GRID. ELEVATION IS IN FEET.

<p>CIMARRON FACILITY PLAN & ELEVATION, WASTE PLACEMENT PIT #3 BURIAL AREA #4 CRESCENT, OKLAHOMA</p>	
<p>REV. 0</p>	<p>DESCRIPTION: DRAWING ISSUED.</p>
<p>DATE: 03/20/01</p>	<p>DATE: 2/07/01</p>
<p>SCALE: AS SHOWN</p>	<p>SCALE: AS SHOWN</p>
<p>JOB NO. 0</p>	<p>DRAWING NO. BA4PIT3-2</p>



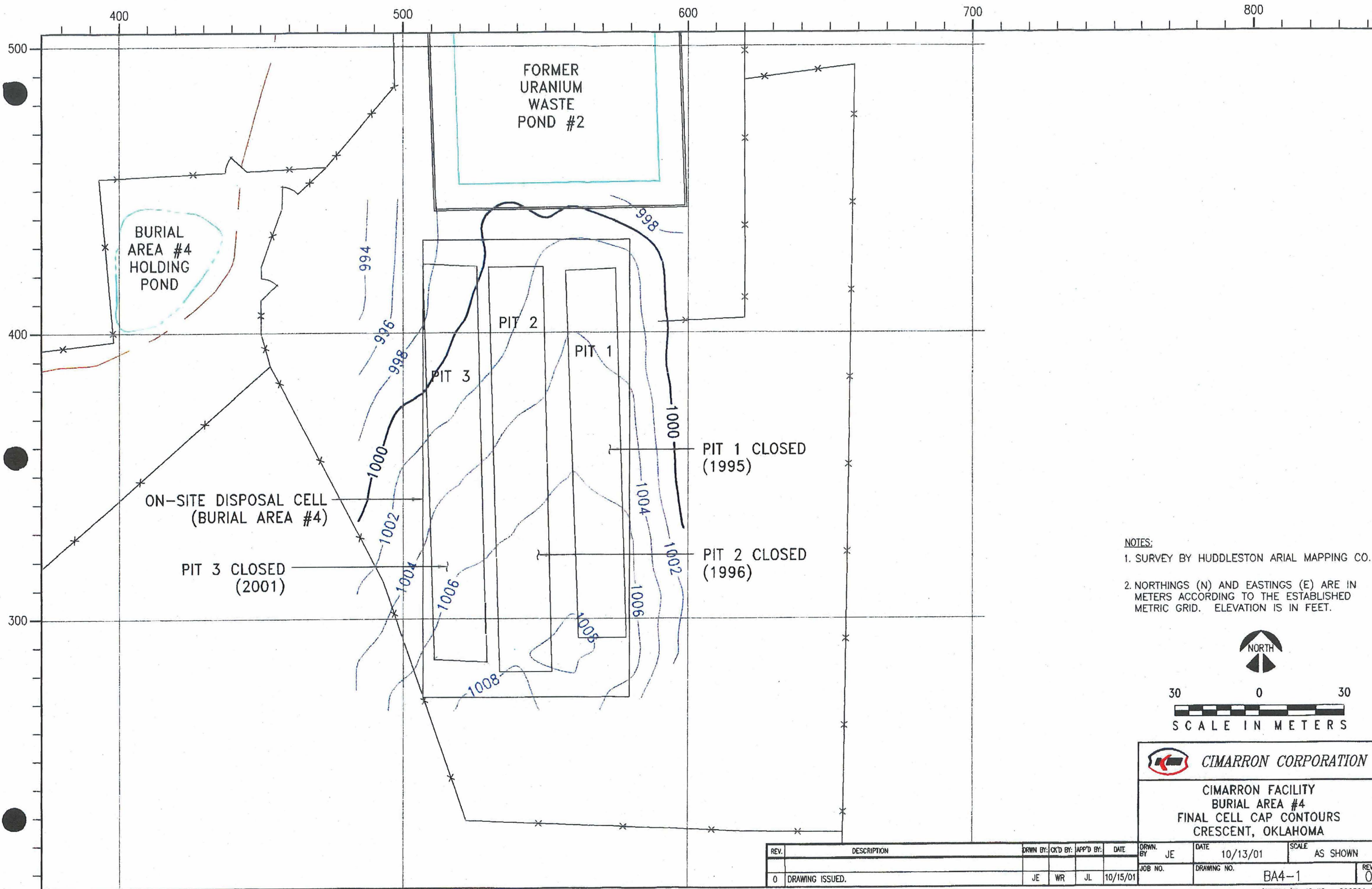
NOTES:
1. SURVEY BY HUDDLESTON ARIAL MAPPING CO.
2. NORTHINGS (N) AND EASTINGS (E) ARE IN METERS ACCORDING TO THE ESTABLISHED METRIC GRID. ELEVATION IS IN FEET.



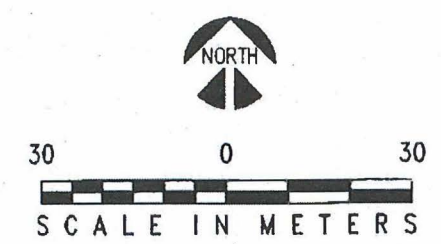
 **CIMARRON CORPORATION**


CIMARRON FACILITY
BURIAL AREA #4
FINAL CELL CAP CONTOURS
CRESCENT, OKLAHOMA

REV.	DESCRIPTION	DRWN BY:	CHK'D BY:	APP'D BY:	DATE	DRWN BY:	DATE	SCALE
0	DRAWING ISSUED.	JE	WR	JL	10/15/01	JE	10/13/01	AS SHOWN
		JOB NO.		DRAWING NO.		REV.		
				BA4-1		0		



NOTES:
1. SURVEY BY HUDDLESTON ARIAL MAPPING CO.
2. NORTHINGS (N) AND EASTINGS (E) ARE IN METERS ACCORDING TO THE ESTABLISHED METRIC GRID. ELEVATION IS IN FEET.



**CIMARRON CORPORATION**

CIMARRON FACILITY
BURIAL AREA #4
FINAL CELL CAP CONTOURS
CRESCENT, OKLAHOMA

REV.	DESCRIPTION	DRWN BY:	CHK'D BY:	APP'D BY:	DATE	DRWN. BY	DATE	SCALE
0	DRAWING ISSUED.	JE	WR	JL	10/15/01	JE	10/13/01	AS SHOWN
						JOB NO.	DRAWING NO.	REV.
							BA4-1	0