



UNITED STATES
NUCLEAR REGULATORY COMMISSION
WASHINGTON, D.C. 20555-0001

November 27, 2019

Mr. John Barrett, Chairman
Citizen Potawatomi Nation
1601 S. Gordon Cooper Dr.
Shawnee, OK 74801

SUBJECT: REQUEST FOR SCOPING COMMENTS CONCERNING THE SHINE
MEDICAL TECHNOLOGIES, LLC APPLICATION FOR AN OPERATING
LICENSE (DOCKET NUMBER: 50-608)

Dear Chairman Barrett:

The U.S. Nuclear Regulatory Commission (NRC) received an application for an operating license from SHINE Medical Technologies, LLC (SHINE) for the proposed SHINE Medical Isotope Production Facility in Janesville, Wisconsin. The application was submitted pursuant to Title 10 of the *Code of Federal Regulations* (10 CFR) Part 50. This facility would be located approximately 4 miles south of Janesville, Rock County, Wisconsin (see Enclosure 1) and if licensed, would produce radioisotopes for use in diagnostic medical procedures.

A review was conducted for the construction permit from 2013-2015. As a result of this review, the NRC issued Construction Permit Number CPMIF-001 to SHINE on February 29, 2016 (Agencywide Documents Access and Management System (ADAMS) Accession Number ML16041A473). The review was supported by NUREG-2189, "Safety Evaluation Report Related to SHINE Medical Technologies, Inc. Construction Permit Application for a Medical Radioisotope Production Facility," dated August 2016, (ADAMS Accession Number ML16229A140) and NUREG-2183, "Environmental Impact Statement for the Construction Permit for the SHINE Medical Radioisotope Production Facility," dated October 2015 (ADAMS Accession Number ML15288A046).

In connection with issuance of an operating license for a production or utilization facility, the NRC is required to supplement the final Environmental Impact Statement (EIS) on the construction permit for that facility in accordance with 10 CFR 51.95(b). The supplement will only cover matters that differ from the final EIS or that reflect significant new information concerning matters discussed in the final environmental impact statement. Therefore, the NRC will prepare a supplement to NUREG-2183 under 10 CFR Part 51, NRC's regulations implementing the National Environmental Policy Act of 1969, as amended (NEPA).

In accordance with 36 CFR 800.8(c), the NRC intends to comply with Section 106 of the National Historic Preservation Act of 1966, as amended (NHPA), through the NEPA process. Accordingly, the NRC staff is inviting parties who may be interested in the proposed action to consult with the NRC staff on this matter. The purpose of this letter is to initiate Section 106 consultation with the Citizen Potawatomi Nation under NHPA. Consistent with the area of potential effects (APE) previously considered for the construction permit application, the APE for this undertaking is the same (i.e., the area at the proposed site and its immediate environs [see Enclosure 2]).

Please submit any comments that you may have on the scope of the environmental review by January 13, 2020. Written comments should be submitted by mail to:

Program Management, Announcements and
Editing Staff Office of Administration
Mailstop TWFN-7A60M
U.S. Nuclear Regulatory Commission
Washington, DC 20555

Electronic comments may be submitted to the NRC by accessing www.regulations.gov and searching for Docket ID NRC-2019-0173.

The NRC accepted the SHINE operating license application for review on October 8, 2019. The application is available through the web-based version of ADAMS, which is accessible at <http://www.nrc.gov/reading-rm/adams.html>. The ADAMS Accession Number for the SHINE operating license application is ML19211C143. The ADAMS Accession Number supplemental environmental report SHINE operating license application is ML19211C139.

The NRC staff plans to hold a public environmental scoping meeting on December 12, 2019, at The Celtic House at Glen Erin Golf Club, 1417 W. Airport Road, Janesville, Wisconsin, 53546. The meeting will convene at 6:00 p.m. and will continue until 8:00 p.m., as necessary. Prior to the meeting, the NRC staff will hold an open house beginning at 5:00 p.m. to discuss the proposed action with interested stakeholders. The NRC staff expects to publish the draft supplement in 2020. A copy of the supplement will be made available for your review and comment.

If you have any questions concerning the NRC staff's review of this operating license application, please contact Mr. Robert Hoffman, Environmental Scientist, at 301-415-1107 or via e-mail at Robert.Hoffman@nrc.gov.

Sincerely,

/RA/

Robert B. Elliott, Chief
Environmental Review License Renewal Branch
Division of Rulemaking, Environmental,
and Financial Support
Office of Nuclear Material Safety
and Safeguards

Docket No. 50-608

Enclosures:

1. Area Map, 6-mile radius
2. Aerial View of the SHINE Site

cc w/encls:

Listserv

Kelli Mosteller, THPO



UNITED STATES
NUCLEAR REGULATORY COMMISSION
WASHINGTON, D.C. 20555-0001

November 27, 2019

Mr. Mike Wiggins, Jr, Chairman
Bad River Band of Lake Superior
Chippewa Indians
P.O. Box 39
Odanah, WI 54861

SUBJECT: REQUEST FOR SCOPING COMMENTS CONCERNING THE SHINE
MEDICAL TECHNOLOGIES, LLC APPLICATION FOR AN OPERATING
LICENSE (DOCKET NUMBER: 50-608)

Dear Chairman Wiggins:

The U.S. Nuclear Regulatory Commission (NRC) received an application for an operating license from SHINE Medical Technologies, LLC (SHINE) for the proposed SHINE Medical Isotope Production Facility in Janesville, Wisconsin. The application was submitted pursuant to Title 10 of the *Code of Federal Regulations* (10 CFR) Part 50. This facility would be located approximately 4 miles south of Janesville, Rock County, Wisconsin (see Enclosure 1) and if licensed, would produce radioisotopes for use in diagnostic medical procedures.

A review was conducted for the construction permit from 2013-2015. As a result of this review, the NRC issued Construction Permit Number CPMIF-001 to SHINE on February 29, 2016 (Agencywide Documents Access and Management System (ADAMS) Accession Number ML16041A473). The review was supported by NUREG-2189, "Safety Evaluation Report Related to SHINE Medical Technologies, Inc. Construction Permit Application for a Medical Radioisotope Production Facility," dated August 2016, (ADAMS Accession Number ML16229A140) and NUREG-2183, "Environmental Impact Statement for the Construction Permit for the SHINE Medical Radioisotope Production Facility," dated October 2015 (ADAMS Accession Number ML15288A046).

In connection with issuance of an operating license for a production or utilization facility, the NRC is required to supplement the final Environmental Impact Statement (EIS) on the construction permit for that facility in accordance with 10 CFR 51.95(b). The supplement will only cover matters that differ from the final EIS or that reflect significant new information concerning matters discussed in the final environmental impact statement. Therefore, the NRC will prepare a supplement to NUREG-2183 under 10 CFR Part 51, NRC's regulations implementing the National Environmental Policy Act of 1969, as amended (NEPA).

In accordance with 36 CFR 800.8(c), the NRC intends to comply with Section 106 of the National Historic Preservation Act of 1966, as amended (NHPA), through the NEPA process. Accordingly, the NRC staff is inviting parties who may be interested in the proposed action to consult with the NRC staff on this matter. The purpose of this letter is to initiate Section 106 consultation with the Bad River Band of Lake Superior Chippewa Indians under NHPA. Consistent with the area of potential effects (APE) previously considered for the construction permit application, the APE for this undertaking is the same (i.e., the area at the proposed site and its immediate environs [see Enclosure 2]).

Please submit any comments that you may have on the scope of the environmental review by January 13, 2020. Written comments should be submitted by mail to:

Program Management, Announcements and
Editing Staff Office of Administration
Mailstop TWFN-7A60M
U.S. Nuclear Regulatory Commission
Washington, DC 20555

Electronic comments may be submitted to the NRC by accessing www.regulations.gov and searching for Docket ID NRC-2019-0173.

The NRC accepted the SHINE operating license application for review on October 8, 2019. The application is available through the web-based version of ADAMS, which is accessible at <http://www.nrc.gov/reading-rm/adams.html>. The ADAMS Accession Number for the SHINE operating license application is ML19211C143. The ADAMS Accession Number supplemental environmental report SHINE operating license application is ML19211C139.

The NRC staff plans to hold a public environmental scoping meeting on December 12, 2019, at The Celtic House at Glen Erin Golf Club, 1417 W. Airport Road, Janesville, Wisconsin, 53546. The meeting will convene at 6:00 p.m. and will continue until 8:00 p.m., as necessary. Prior to the meeting, the NRC staff will hold an open house beginning at 5:00 p.m. to discuss the proposed action with interested stakeholders. The NRC staff expects to publish the draft supplement in 2020. A copy of the supplement will be made available for your review and comment.

If you have any questions concerning the NRC staff's review of this operating license application, please contact Mr. Robert Hoffman, Environmental Scientist, at 301-415-1107 or via e-mail at Robert.Hoffman@nrc.gov.

Sincerely,

/RA/

Robert B. Elliott, Chief
Environmental Review License Renewal Branch
Division of Rulemaking, Environmental
and Financial Support
Office of Nuclear Material Safety
and Safeguards

Docket No. 50-608

Enclosures:

1. Area Map, 6-mile radius
2. Aerial View of the SHINE Site

cc w/encls:

Listserv

Ms. Edith Leoso, THPO



UNITED STATES
NUCLEAR REGULATORY COMMISSION
WASHINGTON, D.C. 20555-0001

November 27, 2019

Mr. Lewis Taylor, Chairman
St. Croix Chippewa Indians
of Wisconsin
St. Croix Tribal Center
24663 Angeline Ave.
Webster, WI 54893

SUBJECT: REQUEST FOR SCOPING COMMENTS CONCERNING THE SHINE
MEDICAL TECHNOLOGIES, LLC APPLICATION FOR AN OPERATING
LICENSE (DOCKET NUMBER: 50-608)

Dear Chairman Taylor:

The U.S. Nuclear Regulatory Commission (NRC) received an application for an operating license from SHINE Medical Technologies, LLC (SHINE) for the proposed SHINE Medical Isotope Production Facility in Janesville, Wisconsin. The application was submitted pursuant to Title 10 of the *Code of Federal Regulations* (10 CFR) Part 50. This facility would be located approximately 4 miles south of Janesville, Rock County, Wisconsin (see Enclosure 1) and if licensed, would produce radioisotopes for use in diagnostic medical procedures.

A review was conducted for the construction permit from 2013-2015. As a result of this review, the NRC issued Construction Permit Number CPMIF-001 to SHINE on February 29, 2016 (Agencywide Documents Access and Management System (ADAMS) Accession Number ML16041A473). The review was supported by NUREG-2189, "Safety Evaluation Report Related to SHINE Medical Technologies, Inc. Construction Permit Application for a Medical Radioisotope Production Facility," dated August 2016, (ADAMS Accession Number ML16229A140) and NUREG-2183, "Environmental Impact Statement for the Construction Permit for the SHINE Medical Radioisotope Production Facility," dated October 2015 (ADAMS Accession Number ML15288A046).

In connection with issuance of an operating license for a production or utilization facility, the NRC is required to supplement the final Environmental Impact Statement (EIS) on the construction permit for that facility in accordance with 10 CFR 51.95(b). The supplement will only cover matters that differ from the final EIS or that reflect significant new information concerning matters discussed in the final environmental impact statement. Therefore, the NRC will prepare a supplement to NUREG-2183 under 10 CFR Part 51, NRC's regulations implementing the National Environmental Policy Act of 1969, as amended (NEPA).

In accordance with 36 CFR 800.8(c), the NRC intends to comply with Section 106 of the National Historic Preservation Act of 1966, as amended (NHPA), through the NEPA process. Accordingly, the NRC staff is inviting parties who may be interested in the proposed action to consult with the NRC staff on this matter. The purpose of this letter is to initiate Section 106 consultation with the St. Croix Chippewa Indians of Wisconsin under NHPA. Consistent with the area of potential effects (APE) previously considered for the construction permit application, the APE for this undertaking is the same (i.e., the area at the proposed site and its immediate environs [see Enclosure 2]).

Please submit any comments that you may have on the scope of the environmental review by January 13, 2020. Written comments should be submitted by mail to:

Program Management, Announcements and
Editing Staff Office of Administration
Mailstop TWFN-7A60M
U.S. Nuclear Regulatory Commission
Washington, DC 20555

Electronic comments may be submitted to the NRC by accessing www.regulations.gov and searching for Docket ID NRC-2019-0173.

The NRC accepted the SHINE operating license application for review on October 8, 2019. The application is available through the web-based version of ADAMS, which is accessible at <http://www.nrc.gov/reading-rm/adams.html>. The ADAMS Accession Number for the SHINE operating license application is ML19211C143. The ADAMS Accession Number supplemental environmental report SHINE operating license application is ML19211C139.

The NRC staff plans to hold a public environmental scoping meeting on December 12, 2019, at The Celtic House at Glen Erin Golf Club, 1417 W. Airport Road, Janesville, Wisconsin, 53546. The meeting will convene at 6:00 p.m. and will continue until 8:00 p.m., as necessary. Prior to the meeting, the NRC staff will hold an open house beginning at 5:00 p.m. to discuss the proposed action with interested stakeholders. The NRC staff expects to publish the draft supplement in 2020. A copy of the supplement will be made available for your review and comment.

If you have any questions concerning the NRC staff's review of this operating license application, please contact Mr. Robert Hoffman, Environmental Scientist, at 301-415-1107 or via e-mail at Robert.Hoffman@nrc.gov.

Sincerely,

/RA/

Robert B. Elliott, Chief
Environmental Review License Renewal Branch
Division of Rulemaking, Environmental
and Financial Support
Office of Nuclear Material Safety
and Safeguards

Docket No. 50-608

Enclosures:

1. Area Map, 6-mile radius
2. Aerial View of the SHINE Site

cc w/encls:

Listserv

Ms. Wanda McFaggan, THPO



UNITED STATES
NUCLEAR REGULATORY COMMISSION
WASHINGTON, D.C. 20555-0001

November 27, 2019

Mr. Douglas Cox, Chairman
Menominee Indian Tribe of Wisconsin
W2908 Tribal Office Loop Road
P.O. Box 910
Keshena, WI 54135

SUBJECT: REQUEST FOR SCOPING COMMENTS CONCERNING THE SHINE
MEDICAL TECHNOLOGIES, LLC APPLICATION FOR AN OPERATING
LICENSE (DOCKET NUMBER: 50-608)

Dear Chairman Cox:

The U.S. Nuclear Regulatory Commission (NRC) received an application for an operating license from SHINE Medical Technologies, LLC (SHINE) for the proposed SHINE Medical Isotope Production Facility in Janesville, Wisconsin. The application was submitted pursuant to Title 10 of the *Code of Federal Regulations* (10 CFR) Part 50. This facility would be located approximately 4 miles south of Janesville, Rock County, Wisconsin (see Enclosure 1) and if licensed, would produce radioisotopes for use in diagnostic medical procedures.

A review was conducted for the construction permit from 2013-2015. As a result of this review, the NRC issued Construction Permit Number CPMIF-001 to SHINE on February 29, 2016 (Agencywide Documents Access and Management System (ADAMS) Accession Number ML16041A473). The review was supported by NUREG-2189, "Safety Evaluation Report Related to SHINE Medical Technologies, Inc. Construction Permit Application for a Medical Radioisotope Production Facility," dated August 2016, (ADAMS Accession Number ML16229A140) and NUREG-2183, "Environmental Impact Statement for the Construction Permit for the SHINE Medical Radioisotope Production Facility," dated October 2015 (ADAMS Accession Number ML15288A046).

In connection with issuance of an operating license for a production or utilization facility, the NRC is required to supplement the final Environmental Impact Statement (EIS) on the construction permit for that facility in accordance with 10 CFR 51.95(b). The supplement will only cover matters that differ from the final EIS or that reflect significant new information concerning matters discussed in the final environmental impact statement. Therefore, the NRC will prepare a supplement to NUREG-2183 under 10 CFR Part 51, NRC's regulations implementing the National Environmental Policy Act of 1969, as amended (NEPA).

In accordance with 36 CFR 800.8(c), the NRC intends to comply with Section 106 of the National Historic Preservation Act of 1966, as amended (NHPA), through the NEPA process. Accordingly, the NRC staff is inviting parties who may be interested in the proposed action to consult with the NRC staff on this matter. The purpose of this letter is to initiate Section 106 consultation with the Menominee Indian Tribe of Wisconsin under NHPA. Consistent with the area of potential effects (APE) previously considered for the construction permit application, the APE for this undertaking is the same (i.e., the area at the proposed site and its immediate environs [see Enclosure 2]).

Please submit any comments that you may have on the scope of the environmental review by January 13, 2020. Written comments should be submitted by mail to:

Program Management, Announcements and
Editing Staff Office of Administration
Mailstop TWFN-7A60M
U.S. Nuclear Regulatory Commission
Washington, DC 20555

Electronic comments may be submitted to the NRC by accessing www.regulations.gov and searching for Docket ID NRC-2019-0173.

The NRC accepted the SHINE operating license application for review on October 8, 2019. The application is available through the web-based version of ADAMS, which is accessible at <http://www.nrc.gov/reading-rm/adams.html>. The ADAMS Accession Number for the SHINE operating license application is ML19211C143. The ADAMS Accession Number supplemental environmental report SHINE operating license application is ML19211C139.

The NRC staff plans to hold a public environmental scoping meeting on December 12, 2019, at The Celtic House at Glen Erin Golf Club, 1417 W. Airport Road, Janesville, Wisconsin, 53546. The meeting will convene at 6:00 p.m. and will continue until 8:00 p.m., as necessary. Prior to the meeting, the NRC staff will hold an open house beginning at 5:00 p.m. to discuss the proposed action with interested stakeholders. The NRC staff expects to publish the draft supplement in 2020. A copy of the supplement will be made available for your review and comment.

If you have any questions concerning the NRC staff's review of this operating license application, please contact Mr. Robert Hoffman, Environmental Scientist, at 301-415-1107 or via e-mail at Robert.Hoffman@nrc.gov.

Sincerely,

/RA/

Robert B. Elliott, Chief
Environmental Review License Renewal Branch
Division of Rulemaking, Environmental
and Financial Support
Office of Nuclear Material Safety
and Safeguards

Docket No. 50-608

Enclosures:

1. Area Map, 6-mile radius
2. Aerial View of the SHINE Site

cc w/encls:

Listserv

Mr. David Grignon, THPO



UNITED STATES
NUCLEAR REGULATORY COMMISSION
WASHINGTON, D.C. 20555-0001

November 27, 2019

Mr. Anthony Reider, President
Flandreau Santee Sioux Tribe of South Dakota
603 West Broad Avenue
P.O. Box 238
Flandreau, SD 57208

SUBJECT: REQUEST FOR SCOPING COMMENTS CONCERNING THE SHINE
MEDICAL TECHNOLOGIES, LLC APPLICATION FOR AN OPERATING
LICENSE (DOCKET NUMBER: 50-608)

Dear President Reider:

The U.S. Nuclear Regulatory Commission (NRC) received an application for an operating license from SHINE Medical Technologies, LLC (SHINE) for the proposed SHINE Medical Isotope Production Facility in Janesville, Wisconsin. The application was submitted pursuant to Title 10 of the *Code of Federal Regulations* (10 CFR) Part 50. This facility would be located approximately 4 miles south of Janesville, Rock County, Wisconsin (see Enclosure 1) and if licensed, would produce radioisotopes for use in diagnostic medical procedures.

A review was conducted for the construction permit from 2013-2015. As a result of this review, the NRC issued Construction Permit Number CPMIF-001 to SHINE on February 29, 2016 (Agencywide Documents Access and Management System (ADAMS) Accession Number ML16041A473). The review was supported by NUREG-2189, "Safety Evaluation Report Related to SHINE Medical Technologies, Inc. Construction Permit Application for a Medical Radioisotope Production Facility," dated August 2016, (ADAMS Accession Number ML16229A140) and NUREG-2183, "Environmental Impact Statement for the Construction Permit for the SHINE Medical Radioisotope Production Facility," dated October 2015 (ADAMS Accession Number ML15288A046).

In connection with issuance of an operating license for a production or utilization facility, the NRC is required to supplement the final Environmental Impact Statement (EIS) on the construction permit for that facility in accordance with 10 CFR 51.95(b). The supplement will only cover matters that differ from the final EIS or that reflect significant new information concerning matters discussed in the final environmental impact statement. Therefore, the NRC will prepare a supplement to NUREG-2183 under 10 CFR Part 51, NRC's regulations implementing the National Environmental Policy Act of 1969, as amended (NEPA).

In accordance with 36 CFR 800.8(c), the NRC intends to comply with Section 106 of the National Historic Preservation Act of 1966, as amended (NHPA), through the NEPA process. Accordingly, the NRC staff is inviting parties who may be interested in the proposed action to consult with the NRC staff on this matter. The purpose of this letter is to initiate Section 106 consultation with the Flandreau Santee Sioux Tribe of South Dakota under NHPA. Consistent with the area of potential effects (APE) previously considered for the construction permit application, the APE for this undertaking is the same (i.e., the area at the proposed site and its immediate environs [see Enclosure 2]).

Please submit any comments that you may have on the scope of the environmental review by January 13, 2020. Written comments should be submitted by mail to:

Program Management, Announcements and
Editing Staff Office of Administration
Mailstop TWFN-7A60M
U.S. Nuclear Regulatory Commission
Washington, DC 20555

Electronic comments may be submitted to the NRC by accessing www.regulations.gov and searching for Docket ID NRC-2019-0173.

The NRC accepted the SHINE operating license application for review on October 8, 2019. The application is available through the web-based version of ADAMS, which is accessible at <http://www.nrc.gov/reading-rm/adams.html>. The ADAMS Accession Number for the SHINE operating license application is ML19211C143. The ADAMS Accession Number supplemental environmental report SHINE operating license application is ML19211C139.

The NRC staff plans to hold a public environmental scoping meeting on December 12, 2019, at The Celtic House at Glen Erin Golf Club, 1417 W. Airport Road, Janesville, Wisconsin, 53546. The meeting will convene at 6:00 p.m. and will continue until 8:00 p.m., as necessary. Prior to the meeting, the NRC staff will hold an open house beginning at 5:00 p.m. to discuss the proposed action with interested stakeholders. The NRC staff expects to publish the draft supplement in 2020. A copy of the supplement will be made available for your review and comment.

If you have any questions concerning the NRC staff's review of this operating license application, please contact Mr. Robert Hoffman, Environmental Scientist, at 301-415-1107 or via e-mail at Robert.Hoffman@nrc.gov.

Sincerely,

/RA/

Robert B. Elliott, Chief
Environmental Review License Renewal Branch
Division of Rulemaking, Environmental
and Financial Support
Office of Nuclear Material Safety
and Safeguards

Docket No. 50-608

Enclosures:

1. Area Map, 6-mile radius
2. Aerial View of the SHINE Site

cc w/encls:

Listserv

Mr. Garrie-Kills-A-Hundred, THPO



UNITED STATES
NUCLEAR REGULATORY COMMISSION
WASHINGTON, D.C. 20555-0001

November 27, 2019

Mr. Edgar B. Kent, Jr., Chairman
Iowa Tribe of Oklahoma
335588 E. 750 Rd.
Perkins, OK 74059

SUBJECT: REQUEST FOR SCOPING COMMENTS CONCERNING THE SHINE
MEDICAL TECHNOLOGIES, LLC APPLICATION FOR AN OPERATING
LICENSE (DOCKET NUMBER: 50-608)

Dear Chairman Kent:

The U.S. Nuclear Regulatory Commission (NRC) received an application for an operating license from SHINE Medical Technologies, LLC (SHINE) for the proposed SHINE Medical Isotope Production Facility in Janesville, Wisconsin. The application was submitted pursuant to Title 10 of the *Code of Federal Regulations* (10 CFR) Part 50. This facility would be located approximately 4 miles south of Janesville, Rock County, Wisconsin (see Enclosure 1) and if licensed, would produce radioisotopes for use in diagnostic medical procedures.

A review was conducted for the construction permit from 2013-2015. As a result of this review, the NRC issued Construction Permit Number CPMIF-001 to SHINE on February 29, 2016 (Agencywide Documents Access and Management System (ADAMS) Accession Number ML16041A473). The review was supported by NUREG-2189, "Safety Evaluation Report Related to SHINE Medical Technologies, Inc. Construction Permit Application for a Medical Radioisotope Production Facility," dated August 2016, (ADAMS Accession Number ML16229A140) and NUREG-2183, "Environmental Impact Statement for the Construction Permit for the SHINE Medical Radioisotope Production Facility," dated October 2015 (ADAMS Accession Number ML15288A046).

In connection with issuance of an operating license for a production or utilization facility, the NRC is required to supplement the final Environmental Impact Statement (EIS) on the construction permit for that facility in accordance with 10 CFR 51.95(b). The supplement will only cover matters that differ from the final EIS or that reflect significant new information concerning matters discussed in the final environmental impact statement. Therefore, the NRC will prepare a supplement to NUREG-2183 under 10 CFR Part 51, NRC's regulations implementing the National Environmental Policy Act of 1969, as amended (NEPA).

In accordance with 36 CFR 800.8(c), the NRC intends to comply with Section 106 of the National Historic Preservation Act of 1966, as amended (NHPA), through the NEPA process. Accordingly, the NRC staff is inviting parties who may be interested in the proposed action to consult with the NRC staff on this matter. The purpose of this letter is to initiate Section 106 consultation with the Iowa Tribe of Oklahoma under NHPA. Consistent with the area of potential effects (APE) previously considered for the construction permit application, the APE for this undertaking is the same (i.e., the area at the proposed site and its immediate environs [see Enclosure 2]).

Please submit any comments that you may have on the scope of the environmental review by January 13, 2020. Written comments should be submitted by mail to:

Program Management, Announcements and
Editing Staff Office of Administration
Mailstop TWFN-7A60M
U.S. Nuclear Regulatory Commission
Washington, DC 20555

Electronic comments may be submitted to the NRC by accessing www.regulations.gov and searching for Docket ID NRC-2019-0173.

The NRC accepted the SHINE operating license application for review on October 8, 2019. The application is available through the web-based version of ADAMS, which is accessible at <http://www.nrc.gov/reading-rm/adams.html>. The ADAMS Accession Number for the SHINE operating license application is ML19211C143. The ADAMS Accession Number supplemental environmental report SHINE operating license application is ML19211C139.

The NRC staff plans to hold a public environmental scoping meeting on December 12, 2019, at The Celtic House at Glen Erin Golf Club, 1417 W. Airport Road, Janesville, Wisconsin, 53546. The meeting will convene at 6:00 p.m. and will continue until 8:00 p.m., as necessary. Prior to the meeting, the NRC staff will hold an open house beginning at 5:00 p.m. to discuss the proposed action with interested stakeholders. The NRC staff expects to publish the draft supplement in 2020. A copy of the supplement will be made available for your review and comment.

If you have any questions concerning the NRC staff's review of this operating license application, please contact Mr. Robert Hoffman, Environmental Scientist, at 301-415-1107 or via e-mail at Robert.Hoffman@nrc.gov.

Sincerely,

/RA/

Robert B. Elliott, Chief
Environmental Review License Renewal Branch
Division of Rulemaking, Environmental
and Financial Support
Office of Nuclear Material Safety
and Safeguards

Docket No. 50-608

Enclosures:

1. Area Map, 6-mile radius
2. Aerial View of the SHINE Site

cc w/encls:

Listserv

Mr. Phillip Cravatt, NAGPRA Contact



UNITED STATES
NUCLEAR REGULATORY COMMISSION
WASHINGTON, D.C. 20555-0001

November 27, 2019

Mr. Ned Daniels Jr., Chairman
Forest County Potawatomi Community
5416 Everybody's Rd.
P.O. Box 340
Crandon, WI 54520M

SUBJECT: REQUEST FOR SCOPING COMMENTS CONCERNING THE SHINE
MEDICAL TECHNOLOGIES, LLC APPLICATION FOR AN OPERATING
LICENSE (DOCKET NUMBER: 50-608)

Dear Chairman Daniels:

The U.S. Nuclear Regulatory Commission (NRC) received an application for an operating license from SHINE Medical Technologies, LLC (SHINE) for the proposed SHINE Medical Isotope Production Facility in Janesville, Wisconsin. The application was submitted pursuant to Title 10 of the *Code of Federal Regulations* (10 CFR) Part 50. This facility would be located approximately 4 miles south of Janesville, Rock County, Wisconsin (see Enclosure 1) and if licensed, would produce radioisotopes for use in diagnostic medical procedures.

A review was conducted for the construction permit from 2013-2015. As a result of this review, the NRC issued Construction Permit Number CPMIF-001 to SHINE on February 29, 2016 (Agencywide Documents Access and Management System (ADAMS) Accession Number ML16041A473). The review was supported by NUREG-2189, "Safety Evaluation Report Related to SHINE Medical Technologies, Inc. Construction Permit Application for a Medical Radioisotope Production Facility," dated August 2016, (ADAMS Accession Number ML16229A140) and NUREG-2183, "Environmental Impact Statement for the Construction Permit for the SHINE Medical Radioisotope Production Facility," dated October 2015 (ADAMS Accession Number ML15288A046).

In connection with issuance of an operating license for a production or utilization facility, the NRC is required to supplement the final Environmental Impact Statement (EIS) on the construction permit for that facility in accordance with 10 CFR 51.95(b). The supplement will only cover matters that differ from the final EIS or that reflect significant new information concerning matters discussed in the final environmental impact statement. Therefore, the NRC will prepare a supplement to NUREG-2183 under 10 CFR Part 51, NRC's regulations implementing the National Environmental Policy Act of 1969, as amended (NEPA).

In accordance with 36 CFR 800.8(c), the NRC intends to comply with Section 106 of the National Historic Preservation Act of 1966, as amended (NHPA), through the NEPA process. Accordingly, the NRC staff is inviting parties who may be interested in the proposed action to consult with the NRC staff on this matter. The purpose of this letter is to initiate Section 106 consultation with the Forest County Potawatomi Community under NHPA. Consistent with the area of potential effects (APE) previously considered for the construction permit application, the APE for this undertaking is the same (i.e., the area at the proposed site and its immediate environs [see Enclosure 2]).

Please submit any comments that you may have on the scope of the environmental review by January 13, 2020. Written comments should be submitted by mail to:

Program Management, Announcements and
Editing Staff Office of Administration
Mailstop TWFN-7A60M
U.S. Nuclear Regulatory Commission
Washington, DC 20555

Electronic comments may be submitted to the NRC by accessing www.regulations.gov and searching for Docket ID NRC-2019-0173.

The NRC accepted the SHINE operating license application for review on October 8, 2019. The application is available through the web-based version of ADAMS, which is accessible at <http://www.nrc.gov/reading-rm/adams.html>. The ADAMS Accession Number for the SHINE operating license application is ML19211C143. The ADAMS Accession Number supplemental environmental report SHINE operating license application is ML19211C139.

The NRC staff plans to hold a public environmental scoping meeting on December 12, 2019, at The Celtic House at Glen Erin Golf Club, 1417 W. Airport Road, Janesville, Wisconsin, 53546. The meeting will convene at 6:00 p.m. and will continue until 8:00 p.m., as necessary. Prior to the meeting, the NRC staff will hold an open house beginning at 5:00 p.m. to discuss the proposed action with interested stakeholders. The NRC staff expects to publish the draft supplement in 2020. A copy of the supplement will be made available for your review and comment.

If you have any questions concerning the NRC staff's review of this operating license application, please contact Mr. Robert Hoffman, Environmental Scientist, at 301-415-1107 or via e-mail at Robert.Hoffman@nrc.gov.

Sincerely,

/RA/

Robert B. Elliott, Chief
Environmental Review License Renewal Branch
Division of Rulemaking, Environmental
and Financial Support
Office of Nuclear Material Safety
and Safeguards

Docket No. 50-608

Enclosures:

1. Area Map, 6-mile radius
2. Aerial View of the SHINE Site

cc w/encls:

Listserv

Mr. Michael LaRonge, THPO



UNITED STATES
NUCLEAR REGULATORY COMMISSION
WASHINGTON, D.C. 20555-0001

November 27, 2019

Mr. Kenneth Meshigaud, Chairperson
Hannahville Indian Community
N14911 Hannahville B-1 Rd.
Wilson MI 49896

SUBJECT: REQUEST FOR SCOPING COMMENTS CONCERNING THE SHINE
MEDICAL TECHNOLOGIES, LLC APPLICATION FOR AN OPERATING
LICENSE (DOCKET NUMBER: 50-608)

Dear Chairperson Meshigaud:

The U.S. Nuclear Regulatory Commission (NRC) received an application for an operating license from SHINE Medical Technologies, LLC (SHINE) for the proposed SHINE Medical Isotope Production Facility in Janesville, Wisconsin. The application was submitted pursuant to Title 10 of the *Code of Federal Regulations* (10 CFR) Part 50. This facility would be located approximately 4 miles south of Janesville, Rock County, Wisconsin (see Enclosure 1) and if licensed, would produce radioisotopes for use in diagnostic medical procedures.

A review was conducted for the construction permit from 2013-2015. As a result of this review, the NRC issued Construction Permit Number CPMIF-001 to SHINE on February 29, 2016 (Agencywide Documents Access and Management System (ADAMS) Accession Number ML16041A473). The review was supported by NUREG-2189, "Safety Evaluation Report Related to SHINE Medical Technologies, Inc. Construction Permit Application for a Medical Radioisotope Production Facility," dated August 2016, (ADAMS Accession Number ML16229A140) and NUREG-2183, "Environmental Impact Statement for the Construction Permit for the SHINE Medical Radioisotope Production Facility," dated October 2015 (ADAMS Accession Number ML15288A046).

In connection with issuance of an operating license for a production or utilization facility, the NRC is required to supplement the final Environmental Impact Statement (EIS) on the construction permit for that facility in accordance with 10 CFR 51.95(b). The supplement will only cover matters that differ from the final EIS or that reflect significant new information concerning matters discussed in the final environmental impact statement. Therefore, the NRC will prepare a supplement to NUREG-2183 under 10 CFR Part 51, NRC's regulations implementing the National Environmental Policy Act of 1969, as amended (NEPA).

In accordance with 36 CFR 800.8(c), the NRC intends to comply with Section 106 of the National Historic Preservation Act of 1966, as amended (NHPA), through the NEPA process. Accordingly, the NRC staff is inviting parties who may be interested in the proposed action to consult with the NRC staff on this matter. The purpose of this letter is to initiate Section 106 consultation with the Hannahville Indian Community under NHPA. Consistent with the area of potential effects (APE) previously considered for the construction permit application, the APE for this undertaking is the same (i.e., the area at the proposed site and its immediate environs [see Enclosure 2]).

Please submit any comments that you may have on the scope of the environmental review by January 13, 2020. Written comments should be submitted by mail to:

Program Management, Announcements and
Editing Staff Office of Administration
Mailstop TWFN-7A60M
U.S. Nuclear Regulatory Commission
Washington, DC 20555

Electronic comments may be submitted to the NRC by accessing www.regulations.gov and searching for Docket ID NRC-2019-0173.

The NRC accepted the SHINE operating license application for review on October 8, 2019. The application is available through the web-based version of ADAMS, which is accessible at <http://www.nrc.gov/reading-rm/adams.html>. The ADAMS Accession Number for the SHINE operating license application is ML19211C143. The ADAMS Accession Number supplemental environmental report SHINE operating license application is ML19211C139.

The NRC staff plans to hold a public environmental scoping meeting on December 12, 2019, at The Celtic House at Glen Erin Golf Club, 1417 W. Airport Road, Janesville, Wisconsin, 53546. The meeting will convene at 6:00 p.m. and will continue until 8:00 p.m., as necessary. Prior to the meeting, the NRC staff will hold an open house beginning at 5:00 p.m. to discuss the proposed action with interested stakeholders. The NRC staff expects to publish the draft supplement in 2020. A copy of the supplement will be made available for your review and comment.

If you have any questions concerning the NRC staff's review of this operating license application, please contact Mr. Robert Hoffman, Environmental Scientist, at 301-415-1107 or via e-mail at Robert.Hoffman@nrc.gov.

Sincerely,

/RA/

Robert B. Elliott, Chief
Environmental Review License Renewal Branch
Division of Rulemaking, Environmental
and Financial Support
Office of Nuclear Material Safety
and Safeguards

Docket No. 50-608

Enclosures:

1. Area Map, 6-mile radius
2. Aerial View of the SHINE Site

cc w/encls:

Listserv

Mr. Earl Meshigaud

Tribal Cultural Representative



UNITED STATES
NUCLEAR REGULATORY COMMISSION
WASHINGTON, D.C. 20555-0001

November 27, 2019

Mr. Marlon White Eagle, President
Ho-Chunk Nation of Wisconsin
P.O. Box 667
W9814 Airport Road
Black River Falls, WI 54615

SUBJECT: REQUEST FOR SCOPING COMMENTS CONCERNING THE SHINE
MEDICAL TECHNOLOGIES, LLC APPLICATION FOR AN OPERATING
LICENSE (DOCKET NUMBER: 50-608)

Dear President White Eagle:

The U.S. Nuclear Regulatory Commission (NRC) received an application for an operating license from SHINE Medical Technologies, LLC (SHINE) for the proposed SHINE Medical Isotope Production Facility in Janesville, Wisconsin. The application was submitted pursuant to Title 10 of the *Code of Federal Regulations* (10 CFR) Part 50. This facility would be located approximately 4 miles south of Janesville, Rock County, Wisconsin (see Enclosure 1) and if licensed, would produce radioisotopes for use in diagnostic medical procedures.

A review was conducted for the construction permit from 2013-2015. As a result of this review, the NRC issued Construction Permit Number CPMIF-001 to SHINE on February 29, 2016 (Agencywide Documents Access and Management System (ADAMS) Accession Number ML16041A473). The review was supported by NUREG-2189, "Safety Evaluation Report Related to SHINE Medical Technologies, Inc. Construction Permit Application for a Medical Radioisotope Production Facility," dated August 2016, (ADAMS Accession Number ML16229A140) and NUREG-2183, "Environmental Impact Statement for the Construction Permit for the SHINE Medical Radioisotope Production Facility," dated October 2015 (ADAMS Accession Number ML15288A046).

In connection with issuance of an operating license for a production or utilization facility, the NRC is required to supplement the final Environmental Impact Statement (EIS) on the construction permit for that facility in accordance with 10 CFR 51.95(b). The supplement will only cover matters that differ from the final EIS or that reflect significant new information concerning matters discussed in the final environmental impact statement. Therefore, the NRC will prepare a supplement to NUREG-2183 under 10 CFR Part 51, NRC's regulations implementing the National Environmental Policy Act of 1969, as amended (NEPA).

In accordance with 36 CFR 800.8(c), the NRC intends to comply with Section 106 of the National Historic Preservation Act of 1966, as amended (NHPA), through the NEPA process. Accordingly, the NRC staff is inviting parties who may be interested in the proposed action to consult with the NRC staff on this matter. The purpose of this letter is to initiate Section 106 consultation with the Ho-Chunk Nation of Wisconsin under NHPA. Consistent with the area of potential effects (APE) previously considered for the construction permit application, the APE for this undertaking is the same (i.e., the area at the proposed site and its immediate environs [see Enclosure 2]).

Please submit any comments that you may have on the scope of the environmental review by January 13, 2020. Written comments should be submitted by mail to:

Program Management, Announcements and
Editing Staff Office of Administration
Mailstop TWFN-7A60M
U.S. Nuclear Regulatory Commission
Washington, DC 20555

Electronic comments may be submitted to the NRC by accessing www.regulations.gov and searching for Docket ID NRC-2019-0173.

The NRC accepted the SHINE operating license application for review on October 8, 2019. The application is available through the web-based version of ADAMS, which is accessible at <http://www.nrc.gov/reading-rm/adams.html>. The ADAMS Accession Number for the SHINE operating license application is ML19211C143. The ADAMS Accession Number supplemental environmental report SHINE operating license application is ML19211C139.

The NRC staff plans to hold a public environmental scoping meeting on December 12, 2019, at The Celtic House at Glen Erin Golf Club, 1417 W. Airport Road, Janesville, Wisconsin, 53546. The meeting will convene at 6:00 p.m. and will continue until 8:00 p.m., as necessary. Prior to the meeting, the NRC staff will hold an open house beginning at 5:00 p.m. to discuss the proposed action with interested stakeholders. The NRC staff expects to publish the draft supplement in 2020. A copy of the supplement will be made available for your review and comment.

If you have any questions concerning the NRC staff's review of this operating license application, please contact Mr. Robert Hoffman, Environmental Scientist, at 301-415-1107 or via e-mail at Robert.Hoffman@nrc.gov.

Sincerely,

/RA/

Robert B. Elliott, Chief
Environmental Review License Renewal Branch
Division of Rulemaking, Environmental
and Financial Support
Office of Nuclear Material Safety
and Safeguards

Docket No. 50-608

Enclosures:

1. Area Map, 6-mile radius
2. Aerial View of the SHINE Site

cc w/encls:

Listserv

Mr. William Quackenbush, THPO



UNITED STATES
NUCLEAR REGULATORY COMMISSION
WASHINGTON, D.C. 20555-0001

November 27, 2019

Mr. Justin F. Wood, Principal Chief
Sac and Fox Nation
Administration Building
920883 S. Hwy 99, Bldg. A
Stroud, OK 74079

SUBJECT: REQUEST FOR SCOPING COMMENTS CONCERNING THE SHINE
MEDICAL TECHNOLOGIES, LLC APPLICATION FOR AN OPERATING
LICENSE (DOCKET NUMBER: 50-608)

Dear Principal Chief Wood:

The U.S. Nuclear Regulatory Commission (NRC) received an application for an operating license from SHINE Medical Technologies, LLC (SHINE) for the proposed SHINE Medical Isotope Production Facility in Janesville, Wisconsin. The application was submitted pursuant to Title 10 of the *Code of Federal Regulations* (10 CFR) Part 50. This facility would be located approximately 4 miles south of Janesville, Rock County, Wisconsin (see Enclosure 1) and if licensed, would produce radioisotopes for use in diagnostic medical procedures.

A review was conducted for the construction permit from 2013-2015. As a result of this review, the NRC issued Construction Permit Number CPMIF-001 to SHINE on February 29, 2016 (Agencywide Documents Access and Management System (ADAMS) Accession Number ML16041A473). The review was supported by NUREG-2189, "Safety Evaluation Report Related to SHINE Medical Technologies, Inc. Construction Permit Application for a Medical Radioisotope Production Facility," dated August 2016, (ADAMS Accession Number ML16229A140) and NUREG-2183, "Environmental Impact Statement for the Construction Permit for the SHINE Medical Radioisotope Production Facility," dated October 2015 (ADAMS Accession Number ML15288A046).

In connection with issuance of an operating license for a production or utilization facility, the NRC is required to supplement the final Environmental Impact Statement (EIS) on the construction permit for that facility in accordance with 10 CFR 51.95(b). The supplement will only cover matters that differ from the final EIS or that reflect significant new information concerning matters discussed in the final environmental impact statement. Therefore, the NRC will prepare a supplement to NUREG-2183 under 10 CFR Part 51, NRC's regulations implementing the National Environmental Policy Act of 1969, as amended (NEPA).

In accordance with 36 CFR 800.8(c), the NRC intends to comply with Section 106 of the National Historic Preservation Act of 1966, as amended (NHPA), through the NEPA process. Accordingly, the NRC staff is inviting parties who may be interested in the proposed action to consult with the NRC staff on this matter. The purpose of this letter is to initiate Section 106 consultation with the Sac and Fox Nation under NHPA. Consistent with the area of potential effects (APE) previously considered for the construction permit application, the APE for this undertaking is the same (i.e., the area at the proposed site and its immediate environs [see Enclosure 2]).

Please submit any comments that you may have on the scope of the environmental review by January 13, 2020. Written comments should be submitted by mail to:

Program Management, Announcements and
Editing Staff Office of Administration
Mailstop TWFN-7A60M
U.S. Nuclear Regulatory Commission
Washington, DC 20555

Electronic comments may be submitted to the NRC by accessing www.regulations.gov and searching for Docket ID NRC-2019-0173.

The NRC accepted the SHINE operating license application for review on October 8, 2019. The application is available through the web-based version of ADAMS, which is accessible at <http://www.nrc.gov/reading-rm/adams.html>. The ADAMS Accession Number for the SHINE operating license application is ML19211C143. The ADAMS Accession Number supplemental environmental report SHINE operating license application is ML19211C139.

The NRC staff plans to hold a public environmental scoping meeting on December 12, 2019, at The Celtic House at Glen Erin Golf Club, 1417 W. Airport Road, Janesville, Wisconsin, 53546. The meeting will convene at 6:00 p.m. and will continue until 8:00 p.m., as necessary. Prior to the meeting, the NRC staff will hold an open house beginning at 5:00 p.m. to discuss the proposed action with interested stakeholders. The NRC staff expects to publish the draft supplement in 2020. A copy of the supplement will be made available for your review and comment.

If you have any questions concerning the NRC staff's review of this operating license application, please contact Mr. Robert Hoffman, Environmental Scientist, at 301-415-1107 or via e-mail at Robert.Hoffman@nrc.gov.

Sincerely,

/RA/

Robert B. Elliott, Chief
Environmental Review License Renewal Branch
Division of Rulemaking, Environmental
and Financial Support
Office of Nuclear Material Safety
and Safeguards

Docket No. 50-608

Enclosures:

1. Area Map, 6-mile radius
2. Aerial View of the SHINE Site

cc w/encls:
Listserv



UNITED STATES
NUCLEAR REGULATORY COMMISSION
WASHINGTON, D.C. 20555-0001

November 27, 2019

Mr. Robert Larsen, President
Lower Sioux Indian Community
39527 Res. Highway 1
P.O. Box 308
Morton, MN 56270

SUBJECT: REQUEST FOR SCOPING COMMENTS CONCERNING THE SHINE
MEDICAL TECHNOLOGIES, LLC APPLICATION FOR AN OPERATING
LICENSE (DOCKET NUMBER: 50-608)

Dear President Larsen:

The U.S. Nuclear Regulatory Commission (NRC) received an application for an operating license from SHINE Medical Technologies, LLC (SHINE) for the proposed SHINE Medical Isotope Production Facility in Janesville, Wisconsin. The application was submitted pursuant to Title 10 of the *Code of Federal Regulations* (10 CFR) Part 50. This facility would be located approximately 4 miles south of Janesville, Rock County, Wisconsin (see Enclosure 1) and if licensed, would produce radioisotopes for use in diagnostic medical procedures.

A review was conducted for the construction permit from 2013-2015. As a result of this review, the NRC issued Construction Permit Number CPMIF-001 to SHINE on February 29, 2016 (Agencywide Documents Access and Management System (ADAMS) Accession Number ML16041A473). The review was supported by NUREG-2189, "Safety Evaluation Report Related to SHINE Medical Technologies, Inc. Construction Permit Application for a Medical Radioisotope Production Facility," dated August 2016, (ADAMS Accession Number ML16229A140) and NUREG-2183, "Environmental Impact Statement for the Construction Permit for the SHINE Medical Radioisotope Production Facility," dated October 2015 (ADAMS Accession Number ML15288A046).

In connection with issuance of an operating license for a production or utilization facility, the NRC is required to supplement the final Environmental Impact Statement (EIS) on the construction permit for that facility in accordance with 10 CFR 51.95(b). The supplement will only cover matters that differ from the final EIS or that reflect significant new information concerning matters discussed in the final environmental impact statement. Therefore, the NRC will prepare a supplement to NUREG-2183 under 10 CFR Part 51, NRC's regulations implementing the National Environmental Policy Act of 1969, as amended (NEPA).

In accordance with 36 CFR 800.8(c), the NRC intends to comply with Section 106 of the National Historic Preservation Act of 1966, as amended (NHPA), through the NEPA process. Accordingly, the NRC staff is inviting parties who may be interested in the proposed action to consult with the NRC staff on this matter. The purpose of this letter is to initiate Section 106 consultation with the Lower Sioux Indian Community under NHPA. Consistent with the area of potential effects (APE) previously considered for the construction permit application, the APE for this undertaking is the same (i.e., the area at the proposed site and its immediate environs [see Enclosure 2]).

Please submit any comments that you may have on the scope of the environmental review by January 13, 2020. Written comments should be submitted by mail to:

Program Management, Announcements and
Editing Staff Office of Administration
Mailstop TWFN-7A60M
U.S. Nuclear Regulatory Commission
Washington, DC 20555

Electronic comments may be submitted to the NRC by accessing www.regulations.gov and searching for Docket ID NRC-2019-0173.

The NRC accepted the SHINE operating license application for review on October 8, 2019. The application is available through the web-based version of ADAMS, which is accessible at <http://www.nrc.gov/reading-rm/adams.html>. The ADAMS Accession Number for the SHINE operating license application is ML19211C143. The ADAMS Accession Number supplemental environmental report SHINE operating license application is ML19211C139.

The NRC staff plans to hold a public environmental scoping meeting on December 12, 2019, at The Celtic House at Glen Erin Golf Club, 1417 W. Airport Road, Janesville, Wisconsin, 53546. The meeting will convene at 6:00 p.m. and will continue until 8:00 p.m., as necessary. Prior to the meeting, the NRC staff will hold an open house beginning at 5:00 p.m. to discuss the proposed action with interested stakeholders. The NRC staff expects to publish the draft supplement in 2020. A copy of the supplement will be made available for your review and comment.

If you have any questions concerning the NRC staff's review of this operating license application, please contact Mr. Robert Hoffman, Environmental Scientist, at 301-415-1107 or via e-mail at Robert.Hoffman@nrc.gov.

Sincerely,

/RA/

Robert B. Elliott, Chief
Environmental Review License Renewal Branch
Division of Rulemaking, Environmental
and Financial Support
Office of Nuclear Material Safety
and Safeguards

Docket No. 50-608

Enclosures:

1. Area Map, 6-mile radius
2. Aerial View of the SHINE Site

cc w/encls:

Listserv

Cheyenne St. John, THPO



UNITED STATES
NUCLEAR REGULATORY COMMISSION
WASHINGTON, D.C. 20555-0001

November 27, 2019

Mr. Joseph "Zeke" Rupnick, Chairperson
Prairie Band of Potawatomi Nation
16281 Q Road
Mayetta, KS 66509

SUBJECT: REQUEST FOR SCOPING COMMENTS CONCERNING THE SHINE
MEDICAL TECHNOLOGIES, LLC APPLICATION FOR AN OPERATING
LICENSE (DOCKET NUMBER: 50-608)

Dear Chairperson Rupnick:

The U.S. Nuclear Regulatory Commission (NRC) received an application for an operating license from SHINE Medical Technologies, LLC (SHINE) for the proposed SHINE Medical Isotope Production Facility in Janesville, Wisconsin. The application was submitted pursuant to Title 10 of the *Code of Federal Regulations* (10 CFR) Part 50. This facility would be located approximately 4 miles south of Janesville, Rock County, Wisconsin (see Enclosure 1) and if licensed, would produce radioisotopes for use in diagnostic medical procedures.

A review was conducted for the construction permit from 2013-2015. As a result of this review, the NRC issued Construction Permit Number CPMIF-001 to SHINE on February 29, 2016 (Agencywide Documents Access and Management System (ADAMS) Accession Number ML16041A473). The review was supported by NUREG-2189, "Safety Evaluation Report Related to SHINE Medical Technologies, Inc. Construction Permit Application for a Medical Radioisotope Production Facility," dated August 2016, (ADAMS Accession Number ML16229A140) and NUREG-2183, "Environmental Impact Statement for the Construction Permit for the SHINE Medical Radioisotope Production Facility," dated October 2015 (ADAMS Accession Number ML15288A046).

In connection with issuance of an operating license for a production or utilization facility, the NRC is required to supplement the final Environmental Impact Statement (EIS) on the construction permit for that facility in accordance with 10 CFR 51.95(b). The supplement will only cover matters that differ from the final EIS or that reflect significant new information concerning matters discussed in the final environmental impact statement. Therefore, the NRC will prepare a supplement to NUREG-2183 under 10 CFR Part 51, NRC's regulations implementing the National Environmental Policy Act of 1969, as amended (NEPA).

In accordance with 36 CFR 800.8(c), the NRC intends to comply with Section 106 of the National Historic Preservation Act of 1966, as amended (NHPA), through the NEPA process. Accordingly, the NRC staff is inviting parties who may be interested in the proposed action to consult with the NRC staff on this matter. The purpose of this letter is to initiate Section 106 consultation with the Prairie Band of Potawatomi Nation under NHPA. Consistent with the area of potential effects (APE) previously considered for the construction permit application, the APE for this undertaking is the same (i.e., the area at the proposed site and its immediate environs [see Enclosure 2]).

Please submit any comments that you may have on the scope of the environmental review by January 13, 2020. Written comments should be submitted by mail to:

Program Management, Announcements and
Editing Staff Office of Administration
Mailstop TWFN-7A60M
U.S. Nuclear Regulatory Commission
Washington, DC 20555

Electronic comments may be submitted to the NRC by accessing www.regulations.gov and searching for Docket ID NRC-2019-0173.

The NRC accepted the SHINE operating license application for review on October 8, 2019. The application is available through the web-based version of ADAMS, which is accessible at <http://www.nrc.gov/reading-rm/adams.html>. The ADAMS Accession Number for the SHINE operating license application is ML19211C143. The ADAMS Accession Number supplemental environmental report SHINE operating license application is ML19211C139.

The NRC staff plans to hold a public environmental scoping meeting on December 12, 2019, at The Celtic House at Glen Erin Golf Club, 1417 W. Airport Road, Janesville, Wisconsin, 53546. The meeting will convene at 6:00 p.m. and will continue until 8:00 p.m., as necessary. Prior to the meeting, the NRC staff will hold an open house beginning at 5:00 p.m. to discuss the proposed action with interested stakeholders. The NRC staff expects to publish the draft supplement in 2020. A copy of the supplement will be made available for your review and comment.

If you have any questions concerning the NRC staff's review of this operating license application, please contact Mr. Robert Hoffman, Environmental Scientist, at 301-415-1107 or via e-mail at Robert.Hoffman@nrc.gov.

Sincerely,

/RA/

Robert B. Elliott, Chief
Environmental Review License Renewal Branch
Division of Rulemaking, Environmental
and Financial Support
Office of Nuclear Material Safety
and Safeguards

Docket No. 50-608

Enclosures:

1. Area Map, 6-mile radius
2. Aerial View of the SHINE Site

cc w/encls:
Listserv



UNITED STATES
NUCLEAR REGULATORY COMMISSION
WASHINGTON, D.C. 20555-0001

November 27, 2019

Ms. Shelley Buck, President
Prairie Island Indian Community
5636 Sturgeon Lake Road
Welch, MN 55089

SUBJECT: REQUEST FOR SCOPING COMMENTS CONCERNING THE SHINE
MEDICAL TECHNOLOGIES, LLC APPLICATION FOR AN OPERATING
LICENSE (DOCKET NUMBER: 50-608)

Dear President Buck:

The U.S. Nuclear Regulatory Commission (NRC) received an application for an operating license from SHINE Medical Technologies, LLC (SHINE) for the proposed SHINE Medical Isotope Production Facility in Janesville, Wisconsin. The application was submitted pursuant to Title 10 of the *Code of Federal Regulations* (10 CFR) Part 50. This facility would be located approximately 4 miles south of Janesville, Rock County, Wisconsin (see Enclosure 1) and if licensed, would produce radioisotopes for use in diagnostic medical procedures.

A review was conducted for the construction permit from 2013-2015. As a result of this review, the NRC issued Construction Permit Number CPMIF-001 to SHINE on February 29, 2016 (Agencywide Documents Access and Management System (ADAMS) Accession Number ML16041A473). The review was supported by NUREG-2189, "Safety Evaluation Report Related to SHINE Medical Technologies, Inc. Construction Permit Application for a Medical Radioisotope Production Facility," dated August 2016, (ADAMS Accession Number ML16229A140) and NUREG-2183, "Environmental Impact Statement for the Construction Permit for the SHINE Medical Radioisotope Production Facility," dated October 2015 (ADAMS Accession Number ML15288A046).

In connection with issuance of an operating license for a production or utilization facility, the NRC is required to supplement the final Environmental Impact Statement (EIS) on the construction permit for that facility in accordance with 10 CFR 51.95(b). The supplement will only cover matters that differ from the final EIS or that reflect significant new information concerning matters discussed in the final environmental impact statement. Therefore, the NRC will prepare a supplement to NUREG-2183 under 10 CFR Part 51, NRC's regulations implementing the National Environmental Policy Act of 1969, as amended (NEPA).

In accordance with 36 CFR 800.8(c), the NRC intends to comply with Section 106 of the National Historic Preservation Act of 1966, as amended (NHPA), through the NEPA process. Accordingly, the NRC staff is inviting parties who may be interested in the proposed action to consult with the NRC staff on this matter. The purpose of this letter is to initiate Section 106 consultation with the Prairie Island Indian Community under NHPA. Consistent with the area of potential effects (APE) previously considered for the construction permit application, the APE for this undertaking is the same (i.e., the area at the proposed site and its immediate environs [see Enclosure 2]).

Please submit any comments that you may have on the scope of the environmental review by January 13, 2020. Written comments should be submitted by mail to:

Program Management, Announcements and
Editing Staff Office of Administration
Mailstop TWFN-7A60M
U.S. Nuclear Regulatory Commission
Washington, DC 20555

Electronic comments may be submitted to the NRC by accessing www.regulations.gov and searching for Docket ID NRC-2019-0173.

The NRC accepted the SHINE operating license application for review on October 8, 2019. The application is available through the web-based version of ADAMS, which is accessible at <http://www.nrc.gov/reading-rm/adams.html>. The ADAMS Accession Number for the SHINE operating license application is ML19211C143. The ADAMS Accession Number supplemental environmental report SHINE operating license application is ML19211C139.

The NRC staff plans to hold a public environmental scoping meeting on December 12, 2019, at The Celtic House at Glen Erin Golf Club, 1417 W. Airport Road, Janesville, Wisconsin, 53546. The meeting will convene at 6:00 p.m. and will continue until 8:00 p.m., as necessary. Prior to the meeting, the NRC staff will hold an open house beginning at 5:00 p.m. to discuss the proposed action with interested stakeholders. The NRC staff expects to publish the draft supplement in 2020. A copy of the supplement will be made available for your review and comment.

If you have any questions concerning the NRC staff's review of this operating license application, please contact Mr. Robert Hoffman, Environmental Scientist, at 301-415-1107 or via e-mail at Robert.Hoffman@nrc.gov.

Sincerely,

/RA/

Robert B. Elliott, Chief
Environmental Review License Renewal Branch
Division of Rulemaking, Environmental
and Financial Support
Office of Nuclear Material Safety
and Safeguards

Docket No. 50-608

Enclosures:

1. Area Map, 6-mile radius
2. Aerial View of the SHINE Site

cc w/encls:

Listserv

Mr. Noah White, THPO



UNITED STATES
NUCLEAR REGULATORY COMMISSION
WASHINGTON, D.C. 20555-0001

November 27, 2019

Mr. Roger Trudell, Tribal Chairman
Santee Sioux Nation
108 Spirit Lake Ave. W.
Niobrara, NE 68760

SUBJECT: REQUEST FOR SCOPING COMMENTS CONCERNING THE SHINE
MEDICAL TECHNOLOGIES, LLC APPLICATION FOR AN OPERATING
LICENSE (DOCKET NUMBER: 50-608)

Dear Chairman Trudell:

The U.S. Nuclear Regulatory Commission (NRC) received an application for an operating license from SHINE Medical Technologies, LLC (SHINE) for the proposed SHINE Medical Isotope Production Facility in Janesville, Wisconsin. The application was submitted pursuant to Title 10 of the *Code of Federal Regulations* (10 CFR) Part 50. This facility would be located approximately 4 miles south of Janesville, Rock County, Wisconsin (see Enclosure 1) and if licensed, would produce radioisotopes for use in diagnostic medical procedures.

A review was conducted for the construction permit from 2013-2015. As a result of this review, the NRC issued Construction Permit Number CPMIF-001 to SHINE on February 29, 2016 (Agencywide Documents Access and Management System (ADAMS) Accession Number ML16041A473). The review was supported by NUREG-2189, "Safety Evaluation Report Related to SHINE Medical Technologies, Inc. Construction Permit Application for a Medical Radioisotope Production Facility," dated August 2016, (ADAMS Accession Number ML16229A140) and NUREG-2183, "Environmental Impact Statement for the Construction Permit for the SHINE Medical Radioisotope Production Facility," dated October 2015 (ADAMS Accession Number ML15288A046).

In connection with issuance of an operating license for a production or utilization facility, the NRC is required to supplement the final Environmental Impact Statement (EIS) on the construction permit for that facility in accordance with 10 CFR 51.95(b). The supplement will only cover matters that differ from the final EIS or that reflect significant new information concerning matters discussed in the final environmental impact statement. Therefore, the NRC will prepare a supplement to NUREG-2183 under 10 CFR Part 51, NRC's regulations implementing the National Environmental Policy Act of 1969, as amended (NEPA).

In accordance with 36 CFR 800.8(c), the NRC intends to comply with Section 106 of the National Historic Preservation Act of 1966, as amended (NHPA), through the NEPA process. Accordingly, the NRC staff is inviting parties who may be interested in the proposed action to consult with the NRC staff on this matter. The purpose of this letter is to initiate Section 106 consultation with the Santee Sioux Nation under NHPA. Consistent with the area of potential effects (APE) previously considered for the construction permit application, the APE for this undertaking is the same (i.e., the area at the proposed site and its immediate environs [see Enclosure 2]).

Please submit any comments that you may have on the scope of the environmental review by January 13, 2020. Written comments should be submitted by mail to:

Program Management, Announcements and
Editing Staff Office of Administration
Mailstop TWFN-7A60M
U.S. Nuclear Regulatory Commission
Washington, DC 20555

Electronic comments may be submitted to the NRC by accessing www.regulations.gov and searching for Docket ID NRC-2019-0173.

The NRC accepted the SHINE operating license application for review on October 8, 2019. The application is available through the web-based version of ADAMS, which is accessible at <http://www.nrc.gov/reading-rm/adams.html>. The ADAMS Accession Number for the SHINE operating license application is ML19211C143. The ADAMS Accession Number supplemental environmental report SHINE operating license application is ML19211C139.

The NRC staff plans to hold a public environmental scoping meeting on December 12, 2019, at The Celtic House at Glen Erin Golf Club, 1417 W. Airport Road, Janesville, Wisconsin, 53546. The meeting will convene at 6:00 p.m. and will continue until 8:00 p.m., as necessary. Prior to the meeting, the NRC staff will hold an open house beginning at 5:00 p.m. to discuss the proposed action with interested stakeholders. The NRC staff expects to publish the draft supplement in 2020. A copy of the supplement will be made available for your review and comment.

If you have any questions concerning the NRC staff's review of this operating license application, please contact Mr. Robert Hoffman, Environmental Scientist, at 301-415-1107 or via e-mail at Robert.Hoffman@nrc.gov.

Sincerely,

/RA/

Robert B. Elliott, Chief
Environmental Review License Renewal Branch
Division of Rulemaking, Environmental
and Financial Support
Office of Nuclear Material Safety
and Safeguards

Docket No. 50-608

Enclosures:

1. Area Map, 6-mile radius
2. Aerial View of the SHINE Site

cc w/encls:

Listserv

Mr. Rick Thomas, THPO



**UNITED STATES
NUCLEAR REGULATORY COMMISSION**
WASHINGTON, D.C. 20555-0001

November 27, 2019

Mr. Donovan White, Tribal Chairman
Sisseton-Wahpeton Oyate
of the Lake Traverse Reservation
12554 BIA Hwy 711
P.O. Box 509
Agency Village, SD 57262

**SUBJECT: REQUEST FOR SCOPING COMMENTS CONCERNING THE SHINE
MEDICAL TECHNOLOGIES, LLC APPLICATION FOR AN OPERATING
LICENSE (DOCKET NUMBER: 50-608)**

Dear Tribal Chairman White:

The U.S. Nuclear Regulatory Commission (NRC) received an application for an operating license from SHINE Medical Technologies, LLC (SHINE) for the proposed SHINE Medical Isotope Production Facility in Janesville, Wisconsin. The application was submitted pursuant to Title 10 of the *Code of Federal Regulations* (10 CFR) Part 50. This facility would be located approximately 4 miles south of Janesville, Rock County, Wisconsin (see Enclosure 1) and if licensed, would produce radioisotopes for use in diagnostic medical procedures.

A review was conducted for the construction permit from 2013-2015. As a result of this review, the NRC issued Construction Permit Number CPMIF-001 to SHINE on February 29, 2016 (Agencywide Documents Access and Management System (ADAMS) Accession Number ML16041A473). The review was supported by NUREG-2189, "Safety Evaluation Report Related to SHINE Medical Technologies, Inc. Construction Permit Application for a Medical Radioisotope Production Facility," dated August 2016, (ADAMS Accession Number ML16229A140) and NUREG-2183, "Environmental Impact Statement for the Construction Permit for the SHINE Medical Radioisotope Production Facility," dated October 2015 (ADAMS Accession Number ML15288A046).

In connection with issuance of an operating license for a production or utilization facility, the NRC is required to supplement the final Environmental Impact Statement (EIS) on the construction permit for that facility in accordance with 10 CFR 51.95(b). The supplement will only cover matters that differ from the final EIS or that reflect significant new information concerning matters discussed in the final environmental impact statement. Therefore, the NRC will prepare a supplement to NUREG-2183 under 10 CFR Part 51, NRC's regulations implementing the National Environmental Policy Act of 1969, as amended (NEPA).

In accordance with 36 CFR 800.8(c), the NRC intends to comply with Section 106 of the National Historic Preservation Act of 1966, as amended (NHPA), through the NEPA process. Accordingly, the NRC staff is inviting parties who may be interested in the proposed action to consult with the NRC staff on this matter. The purpose of this letter is to initiate Section 106 consultation with the Sisseton-Wahpeton Oyate of the Lake Traverse Reservation under NHPA. Consistent with the area of potential effects (APE) previously considered for the construction permit application, the APE for this undertaking is the same (i.e., the area at the proposed site and its immediate environs [see Enclosure 2]).

Please submit any comments that you may have on the scope of the environmental review by January 13, 2020. Written comments should be submitted by mail to:

Program Management, Announcements and
Editing Staff Office of Administration
Mailstop TWFN-7A60M
U.S. Nuclear Regulatory Commission
Washington, DC 20555

Electronic comments may be submitted to the NRC by accessing www.regulations.gov and searching for Docket ID NRC-2019-0173.

The NRC accepted the SHINE operating license application for review on October 8, 2019. The application is available through the web-based version of ADAMS, which is accessible at <http://www.nrc.gov/reading-rm/adams.html>. The ADAMS Accession Number for the SHINE operating license application is ML19211C143. The ADAMS Accession Number supplemental environmental report SHINE operating license application is ML19211C139.

The NRC staff plans to hold a public environmental scoping meeting on December 12, 2019, at The Celtic House at Glen Erin Golf Club, 1417 W. Airport Road, Janesville, Wisconsin, 53546. The meeting will convene at 6:00 p.m. and will continue until 8:00 p.m., as necessary. Prior to the meeting, the NRC staff will hold an open house beginning at 5:00 p.m. to discuss the proposed action with interested stakeholders. The NRC staff expects to publish the draft supplement in 2020. A copy of the supplement will be made available for your review and comment.

If you have any questions concerning the NRC staff's review of this operating license application, please contact Mr. Robert Hoffman, Environmental Scientist, at 301-415-1107 or via e-mail at Robert.Hoffman@nrc.gov.

Sincerely,

/RA/

Robert B. Elliott, Chief
Environmental Review License Renewal Branch
Division of Rulemaking, Environmental
and Financial Support
Office of Nuclear Material Safety
and Safeguards

Docket No. 50-608

Enclosures:

1. Area Map, 6-mile radius
2. Aerial View of the SHINE Site

cc w/encls:

Listserv

Ms. Dianne Desroisiers, THPO



UNITED STATES
NUCLEAR REGULATORY COMMISSION
WASHINGTON, D.C. 20555-0001

November 27, 2019

Ms. Peggy Cavanaugh, Tribal Chairperson
Spirit Lake Tribe
816 3rd Avenue North
P.O. Box 359
Fort Totten, ND 58335

SUBJECT: REQUEST FOR SCOPING COMMENTS CONCERNING THE SHINE
MEDICAL TECHNOLOGIES, LLC APPLICATION FOR AN OPERATING
LICENSE (DOCKET NUMBER: 50-608)

Dear Tribal Chairperson Cavanaugh:

The U.S. Nuclear Regulatory Commission (NRC) received an application for an operating license from SHINE Medical Technologies, LLC (SHINE) for the proposed SHINE Medical Isotope Production Facility in Janesville, Wisconsin. The application was submitted pursuant to Title 10 of the *Code of Federal Regulations* (10 CFR) Part 50. This facility would be located approximately 4 miles south of Janesville, Rock County, Wisconsin (see Enclosure 1) and if licensed, would produce radioisotopes for use in diagnostic medical procedures.

A review was conducted for the construction permit from 2013-2015. As a result of this review, the NRC issued Construction Permit Number CPMIF-001 to SHINE on February 29, 2016 (Agencywide Documents Access and Management System (ADAMS) Accession Number ML16041A473). The review was supported by NUREG-2189, "Safety Evaluation Report Related to SHINE Medical Technologies, Inc. Construction Permit Application for a Medical Radioisotope Production Facility," dated August 2016, (ADAMS Accession Number ML16229A140) and NUREG-2183, "Environmental Impact Statement for the Construction Permit for the SHINE Medical Radioisotope Production Facility," dated October 2015 (ADAMS Accession Number ML15288A046).

In connection with issuance of an operating license for a production or utilization facility, the NRC is required to supplement the final Environmental Impact Statement (EIS) on the construction permit for that facility in accordance with 10 CFR 51.95(b). The supplement will only cover matters that differ from the final EIS or that reflect significant new information concerning matters discussed in the final environmental impact statement. Therefore, the NRC will prepare a supplement to NUREG-2183 under 10 CFR Part 51, NRC's regulations implementing the National Environmental Policy Act of 1969, as amended (NEPA).

In accordance with 36 CFR 800.8(c), the NRC intends to comply with Section 106 of the National Historic Preservation Act of 1966, as amended (NHPA), through the NEPA process. Accordingly, the NRC staff is inviting parties who may be interested in the proposed action to consult with the NRC staff on this matter. The purpose of this letter is to initiate Section 106 consultation with the Spirit Lake Tribe under NHPA. Consistent with the area of potential effects (APE) previously considered for the construction permit application, the APE for this undertaking is the same (i.e., the area at the proposed site and its immediate environs [see Enclosure 2]).

Please submit any comments that you may have on the scope of the environmental review by January 13, 2020. Written comments should be submitted by mail to:

Program Management, Announcements and
Editing Staff Office of Administration
Mailstop TWFN-7A60M
U.S. Nuclear Regulatory Commission
Washington, DC 20555

Electronic comments may be submitted to the NRC by accessing www.regulations.gov and searching for Docket ID NRC-2019-0173.

The NRC accepted the SHINE operating license application for review on October 8, 2019. The application is available through the web-based version of ADAMS, which is accessible at <http://www.nrc.gov/reading-rm/adams.html>. The ADAMS Accession Number for the SHINE operating license application is ML19211C143. The ADAMS Accession Number supplemental environmental report SHINE operating license application is ML19211C139.

The NRC staff plans to hold a public environmental scoping meeting on December 12, 2019, at The Celtic House at Glen Erin Golf Club, 1417 W. Airport Road, Janesville, Wisconsin, 53546. The meeting will convene at 6:00 p.m. and will continue until 8:00 p.m., as necessary. Prior to the meeting, the NRC staff will hold an open house beginning at 5:00 p.m. to discuss the proposed action with interested stakeholders. The NRC staff expects to publish the draft supplement in 2020. A copy of the supplement will be made available for your review and comment.

If you have any questions concerning the NRC staff's review of this operating license application, please contact Mr. Robert Hoffman, Environmental Scientist, at 301-415-1107 or via e-mail at Robert.Hoffman@nrc.gov.

Sincerely,

/RA/

Robert B. Elliott, Chief
Environmental Review License Renewal Branch
Division of Rulemaking, Environmental
and Financial Support
Office of Nuclear Material Safety
and Safeguards

Docket No. 50-608

Enclosures:

1. Area Map, 6-mile radius
2. Aerial View of the SHINE Site

cc w/encls:

Listserv

Dr. Erich Longie, THPO



UNITED STATES
NUCLEAR REGULATORY COMMISSION
WASHINGTON, D.C. 20555-0001

November 27, 2019

Mr. Kevin Jensvold, Chairman
Upper Sioux Community
5722 Travers Lane
P.O. Box 147
Granite Falls, MN 56241

SUBJECT: REQUEST FOR SCOPING COMMENTS CONCERNING THE SHINE
MEDICAL TECHNOLOGIES, LLC APPLICATION FOR AN OPERATING
LICENSE (DOCKET NUMBER: 50-608)

Dear Chairman Jensvold:

The U.S. Nuclear Regulatory Commission (NRC) received an application for an operating license from SHINE Medical Technologies, LLC (SHINE) for the proposed SHINE Medical Isotope Production Facility in Janesville, Wisconsin. The application was submitted pursuant to Title 10 of the *Code of Federal Regulations* (10 CFR) Part 50. This facility would be located approximately 4 miles south of Janesville, Rock County, Wisconsin (see Enclosure 1) and if licensed, would produce radioisotopes for use in diagnostic medical procedures.

A review was conducted for the construction permit from 2013-2015. As a result of this review, the NRC issued Construction Permit Number CPMIF-001 to SHINE on February 29, 2016 (Agencywide Documents Access and Management System (ADAMS) Accession Number ML16041A473). The review was supported by NUREG-2189, "Safety Evaluation Report Related to SHINE Medical Technologies, Inc. Construction Permit Application for a Medical Radioisotope Production Facility," dated August 2016, (ADAMS Accession Number ML16229A140) and NUREG-2183, "Environmental Impact Statement for the Construction Permit for the SHINE Medical Radioisotope Production Facility," dated October 2015 (ADAMS Accession Number ML15288A046).

In connection with issuance of an operating license for a production or utilization facility, the NRC is required to supplement the final Environmental Impact Statement (EIS) on the construction permit for that facility in accordance with 10 CFR 51.95(b). The supplement will only cover matters that differ from the final EIS or that reflect significant new information concerning matters discussed in the final environmental impact statement. Therefore, the NRC will prepare a supplement to NUREG-2183 under 10 CFR Part 51, NRC's regulations implementing the National Environmental Policy Act of 1969, as amended (NEPA).

In accordance with 36 CFR 800.8(c), the NRC intends to comply with Section 106 of the National Historic Preservation Act of 1966, as amended (NHPA), through the NEPA process. Accordingly, the NRC staff is inviting parties who may be interested in the proposed action to consult with the NRC staff on this matter. The purpose of this letter is to initiate Section 106 consultation with the Upper Sioux Community under NHPA. Consistent with the area of potential effects (APE) previously considered for the construction permit application, the APE for this undertaking is the same (i.e., the area at the proposed site and its immediate environs [see Enclosure 2]).

Please submit any comments that you may have on the scope of the environmental review by January 13, 2020. Written comments should be submitted by mail to:

Program Management, Announcements and
Editing Staff Office of Administration
Mailstop TWFN-7A60M
U.S. Nuclear Regulatory Commission
Washington, DC 20555

Electronic comments may be submitted to the NRC by accessing www.regulations.gov and searching for Docket ID NRC-2019-0173.

The NRC accepted the SHINE operating license application for review on October 8, 2019. The application is available through the web-based version of ADAMS, which is accessible at <http://www.nrc.gov/reading-rm/adams.html>. The ADAMS Accession Number for the SHINE operating license application is ML19211C143. The ADAMS Accession Number supplemental environmental report SHINE operating license application is ML19211C139.

The NRC staff plans to hold a public environmental scoping meeting on December 12, 2019, at The Celtic House at Glen Erin Golf Club, 1417 W. Airport Road, Janesville, Wisconsin, 53546. The meeting will convene at 6:00 p.m. and will continue until 8:00 p.m., as necessary. Prior to the meeting, the NRC staff will hold an open house beginning at 5:00 p.m. to discuss the proposed action with interested stakeholders. The NRC staff expects to publish the draft supplement in 2020. A copy of the supplement will be made available for your review and comment.

If you have any questions concerning the NRC staff's review of this operating license application, please contact Mr. Robert Hoffman, Environmental Scientist, at 301-415-1107 or via e-mail at Robert.Hoffman@nrc.gov.

Sincerely,

/RA/

Robert B. Elliott, Chief
Environmental Review License Renewal Branch
Division of Rulemaking, Environmental
and Financial Support
Office of Nuclear Material Safety
and Safeguards

Docket No. 50-608

Enclosures:

1. Area Map, 6-mile radius
2. Aerial View of the SHINE Site

cc w/encls:

Listserv

Ms. Samantha Odegard, THPO



UNITED STATES
NUCLEAR REGULATORY COMMISSION
WASHINGTON, D.C. 20555-0001

November 27, 2019

Mr. Craig Harper, Chief
Peoria Tribe of Indians of Oklahoma
118 S. Eight Tribes Trail
P.O. Box 1527
Miami, OK 74355

SUBJECT: REQUEST FOR SCOPING COMMENTS CONCERNING THE SHINE
MEDICAL TECHNOLOGIES, LLC APPLICATION FOR AN OPERATING
LICENSE (DOCKET NUMBER: 50-608)

Dear Chief Harper:

The U.S. Nuclear Regulatory Commission (NRC) received an application for an operating license from SHINE Medical Technologies, LLC (SHINE) for the proposed SHINE Medical Isotope Production Facility in Janesville, Wisconsin. The application was submitted pursuant to Title 10 of the *Code of Federal Regulations* (10 CFR) Part 50. This facility would be located approximately 4 miles south of Janesville, Rock County, Wisconsin (see Enclosure 1) and if licensed, would produce radioisotopes for use in diagnostic medical procedures.

A review was conducted for the construction permit from 2013-2015. As a result of this review, the NRC issued Construction Permit Number CPMIF-001 to SHINE on February 29, 2016 (Agencywide Documents Access and Management System (ADAMS) Accession Number ML16041A473). The review was supported by NUREG-2189, "Safety Evaluation Report Related to SHINE Medical Technologies, Inc. Construction Permit Application for a Medical Radioisotope Production Facility," dated August 2016, (ADAMS Accession Number ML16229A140) and NUREG-2183, "Environmental Impact Statement for the Construction Permit for the SHINE Medical Radioisotope Production Facility," dated October 2015 (ADAMS Accession Number ML15288A046).

In connection with issuance of an operating license for a production or utilization facility, the NRC is required to supplement the final Environmental Impact Statement (EIS) on the construction permit for that facility in accordance with 10 CFR 51.95(b). The supplement will only cover matters that differ from the final EIS or that reflect significant new information concerning matters discussed in the final environmental impact statement. Therefore, the NRC will prepare a supplement to NUREG-2183 under 10 CFR Part 51, NRC's regulations implementing the National Environmental Policy Act of 1969, as amended (NEPA).

In accordance with 36 CFR 800.8(c), the NRC intends to comply with Section 106 of the National Historic Preservation Act of 1966, as amended (NHPA), through the NEPA process. Accordingly, the NRC staff is inviting parties who may be interested in the proposed action to consult with the NRC staff on this matter. The purpose of this letter is to initiate Section 106 consultation with the Peoria Tribe of Indians of Oklahoma under NHPA. Consistent with the area of potential effects (APE) previously considered for the construction permit application, the APE for this undertaking is the same (i.e., the area at the proposed site and its immediate environs [see Enclosure 2]).

Please submit any comments that you may have on the scope of the environmental review by January 13, 2020. Written comments should be submitted by mail to:

Program Management, Announcements and
Editing Staff Office of Administration
Mailstop TWFN-7A60M
U.S. Nuclear Regulatory Commission
Washington, DC 20555

Electronic comments may be submitted to the NRC by accessing www.regulations.gov and searching for Docket ID NRC-2019-0173.

The NRC accepted the SHINE operating license application for review on October 8, 2019. The application is available through the web-based version of ADAMS, which is accessible at <http://www.nrc.gov/reading-rm/adams.html>. The ADAMS Accession Number for the SHINE operating license application is ML19211C143. The ADAMS Accession Number supplemental environmental report SHINE operating license application is ML19211C139.

The NRC staff plans to hold a public environmental scoping meeting on December 12, 2019, at The Celtic House at Glen Erin Golf Club, 1417 W. Airport Road, Janesville, Wisconsin, 53546. The meeting will convene at 6:00 p.m. and will continue until 8:00 p.m., as necessary. Prior to the meeting, the NRC staff will hold an open house beginning at 5:00 p.m. to discuss the proposed action with interested stakeholders. The NRC staff expects to publish the draft supplement in 2020. A copy of the supplement will be made available for your review and comment.

If you have any questions concerning the NRC staff's review of this operating license application, please contact Mr. Robert Hoffman, Environmental Scientist, at 301-415-1107 or via e-mail at Robert.Hoffman@nrc.gov.

Sincerely,

/RA/

Robert B. Elliott, Chief
Environmental Review License Renewal Branch
Division of Rulemaking, Environmental
and Financial Support
Office of Nuclear Material Safety
and Safeguards

Docket No. 50-608

Enclosures:

1. Area Map, 6-mile radius
2. Aerial View of the SHINE Site

cc w/encls:

Listserv

Mr. Logan Pappenfort, THPO



UNITED STATES
NUCLEAR REGULATORY COMMISSION
WASHINGTON, D.C. 20555-0001

November 27, 2019

Mr. Coly Brown, Chairman
Winnebago Tribe of Nebraska
100 Bluff Street
P.O. Box 687
Winnebago, NE 68071

SUBJECT: REQUEST FOR SCOPING COMMENTS CONCERNING THE SHINE
MEDICAL TECHNOLOGIES, LLC APPLICATION FOR AN OPERATING
LICENSE (DOCKET NUMBER: 50-608)

Dear Chairman Brown:

The U.S. Nuclear Regulatory Commission (NRC) received an application for an operating license from SHINE Medical Technologies, LLC (SHINE) for the proposed SHINE Medical Isotope Production Facility in Janesville, Wisconsin. The application was submitted pursuant to Title 10 of the *Code of Federal Regulations* (10 CFR) Part 50. This facility would be located approximately 4 miles south of Janesville, Rock County, Wisconsin (see Enclosure 1) and if licensed, would produce radioisotopes for use in diagnostic medical procedures.

A review was conducted for the construction permit from 2013-2015. As a result of this review, the NRC issued Construction Permit Number CPMIF-001 to SHINE on February 29, 2016 (Agencywide Documents Access and Management System (ADAMS) Accession Number ML16041A473). The review was supported by NUREG-2189, "Safety Evaluation Report Related to SHINE Medical Technologies, Inc. Construction Permit Application for a Medical Radioisotope Production Facility," dated August 2016, (ADAMS Accession Number ML16229A140) and NUREG-2183, "Environmental Impact Statement for the Construction Permit for the SHINE Medical Radioisotope Production Facility," dated October 2015 (ADAMS Accession Number ML15288A046).

In connection with issuance of an operating license for a production or utilization facility, the NRC is required to supplement the final Environmental Impact Statement (EIS) on the construction permit for that facility in accordance with 10 CFR 51.95(b). The supplement will only cover matters that differ from the final EIS or that reflect significant new information concerning matters discussed in the final environmental impact statement. Therefore, the NRC will prepare a supplement to NUREG-2183 under 10 CFR Part 51, NRC's regulations implementing the National Environmental Policy Act of 1969, as amended (NEPA).

In accordance with 36 CFR 800.8(c), the NRC intends to comply with Section 106 of the National Historic Preservation Act of 1966, as amended (NHPA), through the NEPA process. Accordingly, the NRC staff is inviting parties who may be interested in the proposed action to consult with the NRC staff on this matter. The purpose of this letter is to initiate Section 106 consultation with the Winnebago Tribe of Nebraska under NHPA. Consistent with the area of potential effects (APE) previously considered for the construction permit application, the APE for this undertaking is the same (i.e., the area at the proposed site and its immediate environs [see Enclosure 2]).

Please submit any comments that you may have on the scope of the environmental review by January 13, 2020. Written comments should be submitted by mail to:

Program Management, Announcements and
Editing Staff Office of Administration
Mailstop TWFN-7A60M
U.S. Nuclear Regulatory Commission
Washington, DC 20555

Electronic comments may be submitted to the NRC by accessing www.regulations.gov and searching for Docket ID NRC-2019-0173.

The NRC accepted the SHINE operating license application for review on October 8, 2019. The application is available through the web-based version of ADAMS, which is accessible at <http://www.nrc.gov/reading-rm/adams.html>. The ADAMS Accession Number for the SHINE operating license application is ML19211C143. The ADAMS Accession Number supplemental environmental report SHINE operating license application is ML19211C139.

The NRC staff plans to hold a public environmental scoping meeting on December 12, 2019, at The Celtic House at Glen Erin Golf Club, 1417 W. Airport Road, Janesville, Wisconsin, 53546. The meeting will convene at 6:00 p.m. and will continue until 8:00 p.m., as necessary. Prior to the meeting, the NRC staff will hold an open house beginning at 5:00 p.m. to discuss the proposed action with interested stakeholders. The NRC staff expects to publish the draft supplement in 2020. A copy of the supplement will be made available for your review and comment.

If you have any questions concerning the NRC staff's review of this operating license application, please contact Mr. Robert Hoffman, Environmental Scientist, at 301-415-1107 or via e-mail at Robert.Hoffman@nrc.gov.

Sincerely,

/RA/

Robert B. Elliott, Chief
Environmental Review License Renewal Branch
Division of Rulemaking, Environmental
and Financial Support
Office of Nuclear Material Safety
and Safeguards

Docket No. 50-608

Enclosures:

1. Area Map, 6-mile radius
2. Aerial View of the SHINE Site

cc w/encls:

Listserv

Mr. Randy Teboe, THPO



UNITED STATES
NUCLEAR REGULATORY COMMISSION
WASHINGTON, D.C. 20555-0001

November 27, 2019

Mr. Andrew "Andy" Werk Jr., President
Fort Belknap Indian Community of the Fort
Belknap Reservation of Montana
656 Agency Main Street
RR 1, P.O. Box 66
Harlem, MT 59526

SUBJECT: REQUEST FOR SCOPING COMMENTS CONCERNING THE SHINE
MEDICAL TECHNOLOGIES, LLC APPLICATION FOR AN OPERATING
LICENSE (DOCKET NUMBER: 50-608)

Dear President Werk:

The U.S. Nuclear Regulatory Commission (NRC) received an application for an operating license from SHINE Medical Technologies, LLC (SHINE) for the proposed SHINE Medical Isotope Production Facility in Janesville, Wisconsin. The application was submitted pursuant to Title 10 of the *Code of Federal Regulations* (10 CFR) Part 50. This facility would be located approximately 4 miles south of Janesville, Rock County, Wisconsin (see Enclosure 1) and if licensed, would produce radioisotopes for use in diagnostic medical procedures.

A review was conducted for the construction permit from 2013-2015. As a result of this review, the NRC issued Construction Permit Number CPMIF-001 to SHINE on February 29, 2016 (Agencywide Documents Access and Management System (ADAMS) Accession Number ML16041A473). The review was supported by NUREG-2189, "Safety Evaluation Report Related to SHINE Medical Technologies, Inc. Construction Permit Application for a Medical Radioisotope Production Facility," dated August 2016, (ADAMS Accession Number ML16229A140) and NUREG-2183, "Environmental Impact Statement for the Construction Permit for the SHINE Medical Radioisotope Production Facility," dated October 2015 (ADAMS Accession Number ML15288A046).

In connection with issuance of an operating license for a production or utilization facility, the NRC is required to supplement the final Environmental Impact Statement (EIS) on the construction permit for that facility in accordance with 10 CFR 51.95(b). The supplement will only cover matters that differ from the final EIS or that reflect significant new information concerning matters discussed in the final environmental impact statement. Therefore, the NRC will prepare a supplement to NUREG-2183 under 10 CFR Part 51, NRC's regulations implementing the National Environmental Policy Act of 1969, as amended (NEPA).

In accordance with 36 CFR 800.8(c), the NRC intends to comply with Section 106 of the National Historic Preservation Act of 1966, as amended (NHPA), through the NEPA process. Accordingly, the NRC staff is inviting parties who may be interested in the proposed action to consult with the NRC staff on this matter. The purpose of this letter is to initiate Section 106 consultation with the Fort Belknap Indian Community of the Fort Belknap Reservation of Montana under NHPA. Consistent with the area of potential effects (APE) previously considered for the construction permit application, the APE for this undertaking is the same (i.e., the area at the proposed site and its immediate environs [see Enclosure 2]).

Please submit any comments that you may have on the scope of the environmental review by January 13, 2020. Written comments should be submitted by mail to:

Program Management, Announcements and
Editing Staff Office of Administration
Mailstop TWFN-7A60M
U.S. Nuclear Regulatory Commission
Washington, DC 20555

Electronic comments may be submitted to the NRC by accessing www.regulations.gov and searching for Docket ID NRC-2019-0173.

The NRC accepted the SHINE operating license application for review on October 8, 2019. The application is available through the web-based version of ADAMS, which is accessible at <http://www.nrc.gov/reading-rm/adams.html>. The ADAMS Accession Number for the SHINE operating license application is ML19211C143. The ADAMS Accession Number supplemental environmental report SHINE operating license application is ML19211C139.

The NRC staff plans to hold a public environmental scoping meeting on December 12, 2019, at The Celtic House at Glen Erin Golf Club, 1417 W. Airport Road, Janesville, Wisconsin, 53546. The meeting will convene at 6:00 p.m. and will continue until 8:00 p.m., as necessary. Prior to the meeting, the NRC staff will hold an open house beginning at 5:00 p.m. to discuss the proposed action with interested stakeholders. The NRC staff expects to publish the draft supplement in 2020. A copy of the supplement will be made available for your review and comment.

If you have any questions concerning the NRC staff's review of this operating license application, please contact Mr. Robert Hoffman, Environmental Scientist, at 301-415-1107 or via e-mail at Robert.Hoffman@nrc.gov.

Sincerely,

/RA/

Robert B. Elliott, Chief
Environmental Review License Renewal Branch
Division of Rulemaking, Environmental
and Financial Support
Office of Nuclear Material Safety
and Safeguards

Docket No. 50-608

Enclosures:

1. Area Map, 6-mile radius
2. Aerial View of the SHINE Site

cc w/encls:

Listserv

Mr. Michael J. Black Wolf, THPO



UNITED STATES
NUCLEAR REGULATORY COMMISSION
WASHINGTON, D.C. 20555-0001

November 27, 2019

Mr. Joseph Wildcat, Sr., President
Lac du Flambeau Band of Lake Superior
Chippewa Indians
418 Little Pines Road
P.O. Box 67
Lac du Flambeau, WI 54538

SUBJECT: REQUEST FOR SCOPING COMMENTS CONCERNING THE SHINE
MEDICAL TECHNOLOGIES, LLC APPLICATION FOR AN OPERATING
LICENSE (DOCKET NUMBER: 50-608)

Dear President Wildcat:

The U.S. Nuclear Regulatory Commission (NRC) received an application for an operating license from SHINE Medical Technologies, LLC (SHINE) for the proposed SHINE Medical Isotope Production Facility in Janesville, Wisconsin. The application was submitted pursuant to Title 10 of the *Code of Federal Regulations* (10 CFR) Part 50. This facility would be located approximately 4 miles south of Janesville, Rock County, Wisconsin (see Enclosure 1) and if licensed, would produce radioisotopes for use in diagnostic medical procedures.

A review was conducted for the construction permit from 2013-2015. As a result of this review, the NRC issued Construction Permit Number CPMIF-001 to SHINE on February 29, 2016 (Agencywide Documents Access and Management System (ADAMS) Accession Number ML16041A473). The review was supported by NUREG-2189, "Safety Evaluation Report Related to SHINE Medical Technologies, Inc. Construction Permit Application for a Medical Radioisotope Production Facility," dated August 2016, (ADAMS Accession Number ML16229A140) and NUREG-2183, "Environmental Impact Statement for the Construction Permit for the SHINE Medical Radioisotope Production Facility," dated October 2015 (ADAMS Accession Number ML15288A046).

In connection with issuance of an operating license for a production or utilization facility, the NRC is required to supplement the final Environmental Impact Statement (EIS) on the construction permit for that facility in accordance with 10 CFR 51.95(b). The supplement will only cover matters that differ from the final EIS or that reflect significant new information concerning matters discussed in the final environmental impact statement. Therefore, the NRC will prepare a supplement to NUREG-2183 under 10 CFR Part 51, NRC's regulations implementing the National Environmental Policy Act of 1969, as amended (NEPA).

In accordance with 36 CFR 800.8(c), the NRC intends to comply with Section 106 of the National Historic Preservation Act of 1966, as amended (NHPA), through the NEPA process. Accordingly, the NRC staff is inviting parties who may be interested in the proposed action to consult with the NRC staff on this matter. The purpose of this letter is to initiate Section 106 consultation with the Lac du Flambeau Band of Lake Superior Chippewa Indians under NHPA. Consistent with the area of potential effects (APE) previously considered for the construction permit application, the APE for this undertaking is the same (i.e., the area at the proposed site and its immediate environs [see Enclosure 2]).

Please submit any comments that you may have on the scope of the environmental review by January 13, 2020. Written comments should be submitted by mail to:

Program Management, Announcements and
Editing Staff Office of Administration
Mailstop TWFN-7A60M
U.S. Nuclear Regulatory Commission
Washington, DC 20555

Electronic comments may be submitted to the NRC by accessing www.regulations.gov and searching for Docket ID NRC-2019-0173.

The NRC accepted the SHINE operating license application for review on October 8, 2019. The application is available through the web-based version of ADAMS, which is accessible at <http://www.nrc.gov/reading-rm/adams.html>. The ADAMS Accession Number for the SHINE operating license application is ML19211C143. The ADAMS Accession Number supplemental environmental report SHINE operating license application is ML19211C139.

The NRC staff plans to hold a public environmental scoping meeting on December 12, 2019, at The Celtic House at Glen Erin Golf Club, 1417 W. Airport Road, Janesville, Wisconsin, 53546. The meeting will convene at 6:00 p.m. and will continue until 8:00 p.m., as necessary. Prior to the meeting, the NRC staff will hold an open house beginning at 5:00 p.m. to discuss the proposed action with interested stakeholders. The NRC staff expects to publish the draft supplement in 2020. A copy of the supplement will be made available for your review and comment.

If you have any questions concerning the NRC staff's review of this operating license application, please contact Mr. Robert Hoffman, Environmental Scientist, at 301-415-1107 or via e-mail at Robert.Hoffman@nrc.gov.

Sincerely,

/RA/

Robert B. Elliott, Chief
Environmental Review License Renewal Branch
Division of Rulemaking, Environmental
and Financial Support
Office of Nuclear Material Safety
and Safeguards

Docket No. 50-608

Enclosures:

1. Area Map, 6-mile radius
2. Aerial View of the SHINE Site

cc w/encls:

Listserv

Ms. Melinda Young, THPO



UNITED STATES
NUCLEAR REGULATORY COMMISSION
WASHINGTON, D.C. 20555-0001

November 27, 2019

Ms. Regina Gasco Bentley, Chairman
Little Traverse Bay Bands
of Odawa Indians
7500 Odawa Circle
Harbor Springs, MI 49740

SUBJECT: REQUEST FOR SCOPING COMMENTS CONCERNING THE SHINE
MEDICAL TECHNOLOGIES, LLC APPLICATION FOR AN OPERATING
LICENSE (DOCKET NUMBER: 50-608)

Dear Chairman Bentley:

The U.S. Nuclear Regulatory Commission (NRC) received an application for an operating license from SHINE Medical Technologies, LLC (SHINE) for the proposed SHINE Medical Isotope Production Facility in Janesville, Wisconsin. The application was submitted pursuant to Title 10 of the *Code of Federal Regulations* (10 CFR) Part 50. This facility would be located approximately 4 miles south of Janesville, Rock County, Wisconsin (see Enclosure 1) and if licensed, would produce radioisotopes for use in diagnostic medical procedures.

A review was conducted for the construction permit from 2013-2015. As a result of this review, the NRC issued Construction Permit Number CPMIF-001 to SHINE on February 29, 2016 (Agencywide Documents Access and Management System (ADAMS) Accession Number ML16041A473). The review was supported by NUREG-2189, "Safety Evaluation Report Related to SHINE Medical Technologies, Inc. Construction Permit Application for a Medical Radioisotope Production Facility," dated August 2016, (ADAMS Accession Number ML16229A140) and NUREG-2183, "Environmental Impact Statement for the Construction Permit for the SHINE Medical Radioisotope Production Facility," dated October 2015 (ADAMS Accession Number ML15288A046).

In connection with issuance of an operating license for a production or utilization facility, the NRC is required to supplement the final Environmental Impact Statement (EIS) on the construction permit for that facility in accordance with 10 CFR 51.95(b). The supplement will only cover matters that differ from the final EIS or that reflect significant new information concerning matters discussed in the final environmental impact statement. Therefore, the NRC will prepare a supplement to NUREG-2183 under 10 CFR Part 51, NRC's regulations implementing the National Environmental Policy Act of 1969, as amended (NEPA).

In accordance with 36 CFR 800.8(c), the NRC intends to comply with Section 106 of the National Historic Preservation Act of 1966, as amended (NHPA), through the NEPA process. Accordingly, the NRC staff is inviting parties who may be interested in the proposed action to consult with the NRC staff on this matter. The purpose of this letter is to initiate Section 106 consultation with the Little Traverse Bay Bands of Odawa Indians under NHPA. Consistent with the area of potential effects (APE) previously considered for the construction permit application, the APE for this undertaking is the same (i.e., the area at the proposed site and its immediate environs [see Enclosure 2]).

Please submit any comments that you may have on the scope of the environmental review by January 13, 2020. Written comments should be submitted by mail to:

Program Management, Announcements and
Editing Staff Office of Administration
Mailstop TWFN-7A60M
U.S. Nuclear Regulatory Commission
Washington, DC 20555

Electronic comments may be submitted to the NRC by accessing www.regulations.gov and searching for Docket ID NRC-2019-0173.

The NRC accepted the SHINE operating license application for review on October 8, 2019. The application is available through the web-based version of ADAMS, which is accessible at <http://www.nrc.gov/reading-rm/adams.html>. The ADAMS Accession Number for the SHINE operating license application is ML19211C143. The ADAMS Accession Number supplemental environmental report SHINE operating license application is ML19211C139.

The NRC staff plans to hold a public environmental scoping meeting on December 12, 2019, at The Celtic House at Glen Erin Golf Club, 1417 W. Airport Road, Janesville, Wisconsin, 53546. The meeting will convene at 6:00 p.m. and will continue until 8:00 p.m., as necessary. Prior to the meeting, the NRC staff will hold an open house beginning at 5:00 p.m. to discuss the proposed action with interested stakeholders. The NRC staff expects to publish the draft supplement in 2020. A copy of the supplement will be made available for your review and comment.

If you have any questions concerning the NRC staff's review of this operating license application, please contact Mr. Robert Hoffman, Environmental Scientist, at 301-415-1107 or via e-mail at Robert.Hoffman@nrc.gov.

Sincerely,

/RA/

Robert B. Elliott, Chief
Environmental Review License Renewal Branch
Division of Rulemaking, Environmental
and Financial Support
Office of Nuclear Material Safety
and Safeguards

Docket No. 50-608

Enclosures:

1. Area Map, 6-mile radius
2. Aerial View of the SHINE Site

cc w/encls:

Listserv

Ms. Melissa Wiatroluk, THPO



UNITED STATES
NUCLEAR REGULATORY COMMISSION
WASHINGTON, D.C. 20555-0001

November 27, 2019

Mr. Douglas Lankford, Chief
Miami Tribe of Oklahoma
3410 P St. NW
P.O. Box 1326
Miami, OK 74355

SUBJECT: REQUEST FOR SCOPING COMMENTS CONCERNING THE SHINE
MEDICAL TECHNOLOGIES, LLC APPLICATION FOR AN OPERATING
LICENSE (DOCKET NUMBER: 50-608)

Dear Chief Lankford:

The U.S. Nuclear Regulatory Commission (NRC) received an application for an operating license from SHINE Medical Technologies, LLC (SHINE) for the proposed SHINE Medical Isotope Production Facility in Janesville, Wisconsin. The application was submitted pursuant to Title 10 of the *Code of Federal Regulations* (10 CFR) Part 50. This facility would be located approximately 4 miles south of Janesville, Rock County, Wisconsin (see Enclosure 1) and if licensed, would produce radioisotopes for use in diagnostic medical procedures.

A review was conducted for the construction permit from 2013-2015. As a result of this review, the NRC issued Construction Permit Number CPMIF-001 to SHINE on February 29, 2016 (Agencywide Documents Access and Management System (ADAMS) Accession Number ML16041A473). The review was supported by NUREG-2189, "Safety Evaluation Report Related to SHINE Medical Technologies, Inc. Construction Permit Application for a Medical Radioisotope Production Facility," dated August 2016, (ADAMS Accession Number ML16229A140) and NUREG-2183, "Environmental Impact Statement for the Construction Permit for the SHINE Medical Radioisotope Production Facility," dated October 2015 (ADAMS Accession Number ML15288A046).

In connection with issuance of an operating license for a production or utilization facility, the NRC is required to supplement the final Environmental Impact Statement (EIS) on the construction permit for that facility in accordance with 10 CFR 51.95(b). The supplement will only cover matters that differ from the final EIS or that reflect significant new information concerning matters discussed in the final environmental impact statement. Therefore, the NRC will prepare a supplement to NUREG-2183 under 10 CFR Part 51, NRC's regulations implementing the National Environmental Policy Act of 1969, as amended (NEPA).

In accordance with 36 CFR 800.8(c), the NRC intends to comply with Section 106 of the National Historic Preservation Act of 1966, as amended (NHPA), through the NEPA process. Accordingly, the NRC staff is inviting parties who may be interested in the proposed action to consult with the NRC staff on this matter. The purpose of this letter is to initiate Section 106 consultation with the Miami Tribe of Oklahoma under NHPA. Consistent with the area of potential effects (APE) previously considered for the construction permit application, the APE for this undertaking is the same (i.e., the area at the proposed site and its immediate environs [see Enclosure 2]).

Please submit any comments that you may have on the scope of the environmental review by January 13, 2020. Written comments should be submitted by mail to:

Program Management, Announcements and
Editing Staff Office of Administration
Mailstop TWFN-7A60M
U.S. Nuclear Regulatory Commission
Washington, DC 20555

Electronic comments may be submitted to the NRC by accessing www.regulations.gov and searching for Docket ID NRC-2019-0173.

The NRC accepted the SHINE operating license application for review on October 8, 2019. The application is available through the web-based version of ADAMS, which is accessible at <http://www.nrc.gov/reading-rm/adams.html>. The ADAMS Accession Number for the SHINE operating license application is ML19211C143. The ADAMS Accession Number supplemental environmental report SHINE operating license application is ML19211C139.

The NRC staff plans to hold a public environmental scoping meeting on December 12, 2019, at The Celtic House at Glen Erin Golf Club, 1417 W. Airport Road, Janesville, Wisconsin, 53546. The meeting will convene at 6:00 p.m. and will continue until 8:00 p.m., as necessary. Prior to the meeting, the NRC staff will hold an open house beginning at 5:00 p.m. to discuss the proposed action with interested stakeholders. The NRC staff expects to publish the draft supplement in 2020. A copy of the supplement will be made available for your review and comment.

If you have any questions concerning the NRC staff's review of this operating license application, please contact Mr. Robert Hoffman, Environmental Scientist, at 301-415-1107 or via e-mail at Robert.Hoffman@nrc.gov.

Sincerely,

/RA/

Robert B. Elliott, Chief
Environmental Review License Renewal Branch
Division of Rulemaking, Environmental
and Financial Support
Office of Nuclear Material Safety
and Safeguards

Docket No. 50-608

Enclosures:

1. Area Map, 6-mile radius
2. Aerial View of the SHINE Site

cc w/encls:

Listserv

Ms. Diane Hunter, Acting THPO



UNITED STATES
NUCLEAR REGULATORY COMMISSION
WASHINGTON, D.C. 20555-0001

November 27, 2019

Mr. Geoffrey Standing Bear, Chief
Osage Nation
627 Grandview
Pawhuska, OK 74056

SUBJECT: REQUEST FOR SCOPING COMMENTS CONCERNING THE SHINE
MEDICAL TECHNOLOGIES, LLC APPLICATION FOR AN OPERATING
LICENSE (DOCKET NUMBER: 50-608)

Dear Chief Standing Bear:

The U.S. Nuclear Regulatory Commission (NRC) received an application for an operating license from SHINE Medical Technologies, LLC (SHINE) for the proposed SHINE Medical Isotope Production Facility in Janesville, Wisconsin. The application was submitted pursuant to Title 10 of the *Code of Federal Regulations* (10 CFR) Part 50. This facility would be located approximately 4 miles south of Janesville, Rock County, Wisconsin (see Enclosure 1) and if licensed, would produce radioisotopes for use in diagnostic medical procedures.

A review was conducted for the construction permit from 2013-2015. As a result of this review, the NRC issued Construction Permit Number CPMIF-001 to SHINE on February 29, 2016 (Agencywide Documents Access and Management System (ADAMS) Accession Number ML16041A473). The review was supported by NUREG-2189, "Safety Evaluation Report Related to SHINE Medical Technologies, Inc. Construction Permit Application for a Medical Radioisotope Production Facility," dated August 2016, (ADAMS Accession Number ML16229A140) and NUREG-2183, "Environmental Impact Statement for the Construction Permit for the SHINE Medical Radioisotope Production Facility," dated October 2015 (ADAMS Accession Number ML15288A046).

In connection with issuance of an operating license for a production or utilization facility, the NRC is required to supplement the final Environmental Impact Statement (EIS) on the construction permit for that facility in accordance with 10 CFR 51.95(b). The supplement will only cover matters that differ from the final EIS or that reflect significant new information concerning matters discussed in the final environmental impact statement. Therefore, the NRC will prepare a supplement to NUREG-2183 under 10 CFR Part 51, NRC's regulations implementing the National Environmental Policy Act of 1969, as amended (NEPA).

In accordance with 36 CFR 800.8(c), the NRC intends to comply with Section 106 of the National Historic Preservation Act of 1966, as amended (NHPA), through the NEPA process. Accordingly, the NRC staff is inviting parties who may be interested in the proposed action to consult with the NRC staff on this matter. The purpose of this letter is to initiate Section 106 consultation with the Osage Nation under NHPA. Consistent with the area of potential effects (APE) previously considered for the construction permit application, the APE for this undertaking is the same (i.e., the area at the proposed site and its immediate environs [see Enclosure 2]).

Please submit any comments that you may have on the scope of the environmental review by January 13, 2020. Written comments should be submitted by mail to:

Program Management, Announcements and
Editing Staff Office of Administration
Mailstop TWFN-7A60M
U.S. Nuclear Regulatory Commission
Washington, DC 20555

Electronic comments may be submitted to the NRC by accessing www.regulations.gov and searching for Docket ID NRC-2019-0173.

The NRC accepted the SHINE operating license application for review on October 8, 2019. The application is available through the web-based version of ADAMS, which is accessible at <http://www.nrc.gov/reading-rm/adams.html>. The ADAMS Accession Number for the SHINE operating license application is ML19211C143. The ADAMS Accession Number supplemental environmental report SHINE operating license application is ML19211C139.

The NRC staff plans to hold a public environmental scoping meeting on December 12, 2019, at The Celtic House at Glen Erin Golf Club, 1417 W. Airport Road, Janesville, Wisconsin, 53546. The meeting will convene at 6:00 p.m. and will continue until 8:00 p.m., as necessary. Prior to the meeting, the NRC staff will hold an open house beginning at 5:00 p.m. to discuss the proposed action with interested stakeholders. The NRC staff expects to publish the draft supplement in 2020. A copy of the supplement will be made available for your review and comment.

If you have any questions concerning the NRC staff's review of this operating license application, please contact Mr. Robert Hoffman, Environmental Scientist, at 301-415-1107 or via e-mail at Robert.Hoffman@nrc.gov.

Sincerely,

/RA/

Robert B. Elliott, Chief
Environmental Review License Renewal Branch
Division of Rulemaking, Environmental
and Financial Support
Office of Nuclear Material Safety
and Safeguards

Docket No. 50-608

Enclosures:

1. Area Map, 6-mile radius
2. Aerial View of the SHINE Site

cc w/encls:

Listserv

Dr. Andrea A. Hunter, THPO

**SUBJECT: REQUEST FOR SCOPING COMMENTS CONCERNING THE SHINE
MEDICAL TECHNOLOGIES, LLC APPLICATION FOR AN OPERATING
LICENSE (DOCKET NUMBER: 50-608)**

Dated:

DISTRIBUTION

Public	SLynch, NRR
RidsNrrDanu	LTran, NRR
RidsNrrDanunplb	MBalazik, NRR
RidsNmssRefs	HLogaras, RIII
RidsNmssRefsenrb	ABarker, RIII
RidsNmssRefselrb	MYoung, OGC
RidsACRSACNWMailCenter	JWachutka, OGC
RidsOGCMailCenter	
RidsOCAMailCenter	
GCasto, NRR	

Identical letters have been sent to:

Chairman John Barrett, Citizen Potawatomi Nation
 Chairman Mike Wiggins, Jr., Bad River Band of Lake Superior Chippewa Indians
 Chairman Lewis Taylor, St. Croix Chippewa Indians of Wisconsin
 Chairman Douglas Cox, Menominee Indian Tribe of Wisconsin
 President Anthony Reider, Flandreau Santee Sioux Tribe of South Dakota
 Chairman Edgar B. Kent, Jr., Iowa Tribe of Oklahoma
 Chairman Ned Daniels Jr., Forest County Potawatomi Community
 Chairperson Kenneth Meshigaud, Hannahville Indian Community
 President Marlon WhiteEagle, Ho-Chunk Nation of Wisconsin
 Principal Chief Justin Freeland Wood, Sac and Fox Nation
 President Robert Larsen, Lower Sioux Indian Community
 Chairperson Joseph "Zeke" Rupnick, Prairie Band of Potawatomi Nation
 President Shelley Buck, Prairie Island Indian Community
 Tribal Chairman Roger Trudell, Santee Sioux Nation
 Tribal Chairman Donovan White, Sisseton-Wahpeton Oyate of the Lake Traverse Reservation
 Tribal Chairperson Peggy Cavanaugh, Spirit Lake Tribe
 Chairman Kevin Jensvold, Upper Sioux Community
 Chief Craig Harper, Peoria Tribe of Indians of Oklahoma
 Chairman Coly Brown, Winnebago Tribe of Nebraska
 President Andrew "Andy" Werk Jr., Fort Belknap Indian Community of the Fort Belknap
 Reservation of Montana
 President Joseph Wildcat, Sr., Lac du Flambeau Band of Lake Superior Chippewa Indians
 Tribal Chairman Regina Gasco Bentley, Little Traverse Bay Bands of Odawa Indians
 Chief Douglas Lankford, Miami Tribe of Oklahoma
 Chief Geoffrey Standing Bear, Osage Nation

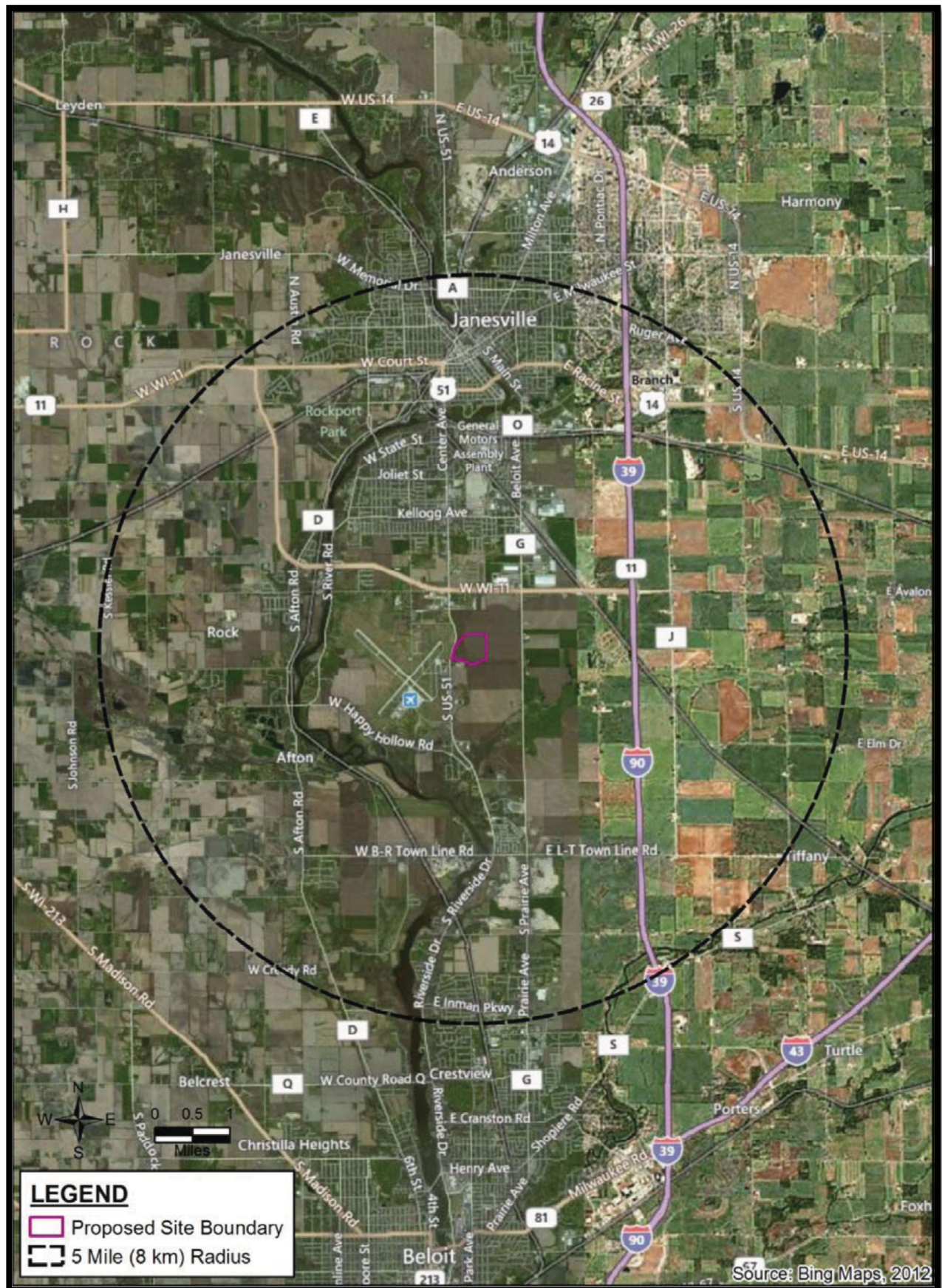
ADAMS Accession Nos: ML19325E112

***via email**

OFFICE	NMSS/REFS	NMSS/REFS	NMSS/REFS	NMSS/REFS	NMSS/REFS
NAME	AWalker-Smith	RHoffman	*NMartinez	JDavis	RElliott
DATE	11/22/2019	11/22/2019	11/22/2019	11/22/2019	11/27/2019

OFFICIAL RECORD COPY

Enclosure 1: Area Map, 6-mile radius



Enclosure 2: Aerial View of the SHINE Site

