



UNITED STATES
NUCLEAR REGULATORY COMMISSION
WASHINGTON, D.C. 20555-0001

November 27, 2019

Ms. Daina Penkiunas
State Historic Preservation Officer
Wisconsin Historical Society
816 State Street
Madison, WI 53706

SUBJECT: REQUEST FOR SCOPING COMMENTS CONCERNING THE SHINE
MEDICAL TECHNOLOGIES, LLC APPLICATION FOR AN OPERATING
LICENSE (DOCKET NUMBER: 50-608)

Dear Ms. Penkiunas:

The U.S. Nuclear Regulatory Commission (NRC) received an application for an operating license from SHINE Medical Technologies, LLC (SHINE) for the proposed SHINE Medical Isotope Production Facility in Janesville, Wisconsin. The application was submitted pursuant to Title 10 of the *Code of Federal Regulations* (10 CFR) Part 50. This facility would be located approximately 4 miles south of Janesville, Rock County, Wisconsin (see Enclosure 1) and if licensed, would produce radioisotopes for use in diagnostic medical procedures.

A review was conducted for the construction permit from 2013-2015. As a result of this review, the NRC issued Construction Permit Number CPMIF-001 to SHINE on February 29, 2016 (Agencywide Documents Access and Management System (ADAMS) Accession Number ML16041A473). The review was supported by NUREG-2189, "Safety Evaluation Report Related to SHINE Medical Technologies, Inc. Construction Permit Application for a Medical Radioisotope Production Facility," dated August 2016, (ADAMS Accession Number ML16229A140) and NUREG-2183, "Environmental Impact Statement for the Construction Permit for the SHINE Medical Radioisotope Production Facility," dated October 2015 (ADAMS Accession Number ML15288A046). In July 2015, the NRC received a determination from the Wisconsin Historical Society that no historic properties would be affected (ADAMS Accession Number ML15191A323).

In connection with issuance of an operating license for a production or utilization facility, the NRC is required to supplement the final Environmental Impact Statement (EIS) on the construction permit for that facility in accordance with 10 CFR 51.95(b). The supplement will only cover matters that differ from the final EIS or that reflect significant new information concerning matters discussed in the final EIS. Therefore, the NRC staff will prepare a supplement to NUREG-2183 under 10 CFR Part 51, NRC's regulations implementing the National Environmental Policy Act of 1969, as amended (NEPA).

In accordance with 36 CFR 800.8(c), the NRC intends to comply with Section 106 of the National Historic Preservation Act of 1966, as amended (NHPA), through the NEPA process. Accordingly, the NRC staff is inviting parties who may be interested in the proposed action to consult with the NRC staff on this matter. The purpose of this letter is to initiate Section 106 consultation with the Wisconsin Historic Preservation Office under NHPA. Consistent with the area of potential effects (APE) previously considered for the construction permit application, the APE for this undertaking is the same (i.e., the area at the proposed site and its immediate environs [see Enclosure 2]).

Please submit any comments that you may have on the scope of the environmental review by January 13, 2020. Written comments should be submitted by mail to:

Program Management, Announcements
and Editing Staff Office of Administration
Mailstop: TWFN-7A60M
U.S. Nuclear Regulatory Commission
Washington, DC 20555

Electronic comments may be submitted to the NRC by accessing www.regulations.gov and searching for Docket ID NRC-2019-0173.

The NRC accepted the SHINE operating license application for review on October 8, 2019. The application is available through the web-based version of ADAMS, which is accessible at <http://www.nrc.gov/reading-rm/adams.html>. The ADAMS Accession Number for the SHINE operating license application is ML19211C143. The ADAMS Accession Number for the supplemental environmental report SHINE operating license application is ML19211C139.

The NRC staff plans to hold a public environmental scoping meeting on December 12, 2019, at The Celtic House at Glen Erin Golf Club, 1417 W. Airport Road, Janesville, Wisconsin, 53546. The meeting will convene at 6:00 p.m. and will continue until 8:00 p.m., as necessary. Prior to the meeting, the NRC staff will hold an open house beginning at 5:00 p.m. to discuss the proposed action with interested stakeholders. The NRC staff expects to publish the draft supplement in 2020. A copy of the supplement will be made available for your review and comment.

If you have any questions concerning the NRC staff's review of this operating license application, please contact Mr. Robert Hoffman, Environmental Scientist, at 301-415-1107 or via e-mail at Robert.Hoffman@nrc.gov.

Sincerely,

/RA/

Robert B. Elliott, Chief
Environmental Review License Renewal Branch
Division of Rulemaking, Environmental,
and Financial Support
Office of Nuclear Material Safety
and Safeguards

Docket No.50-608

Enclosures:

1. Area Map, 6-mile radius
2. Aerial View of the SHINE Site

SUBJECT: REQUEST FOR SCOPING COMMENTS CONCERNING THE SHINE
MEDICAL TECHNOLOGIES, LLC APPLICATION FOR AN OPERATING
LICENSE (DOCKET NUMBER: 50-608)

Dated: November 27, 2019

DISTRIBUTION

Public
RidsNrrDanu
RidsNrrDanunplb
RidsNmssRefs
RidsNmssRefsenrb
RidsNmssRefselrb
RidsAcrsAcnw_MailCTR
RidsOgcMailCenter
RidsOpaMail
RidsOCAMailCenter
RElliott, NMSS
JDavis, NMSS
RHoffman, NMSS
NMartinez, NMSS
GCasto, NRR
SLynch, NRR
LTran, NRR
MBalazik, NRR
HLogaras, RIII
ABarker, RIII
MYoung, OGC
JWachutka, OGC

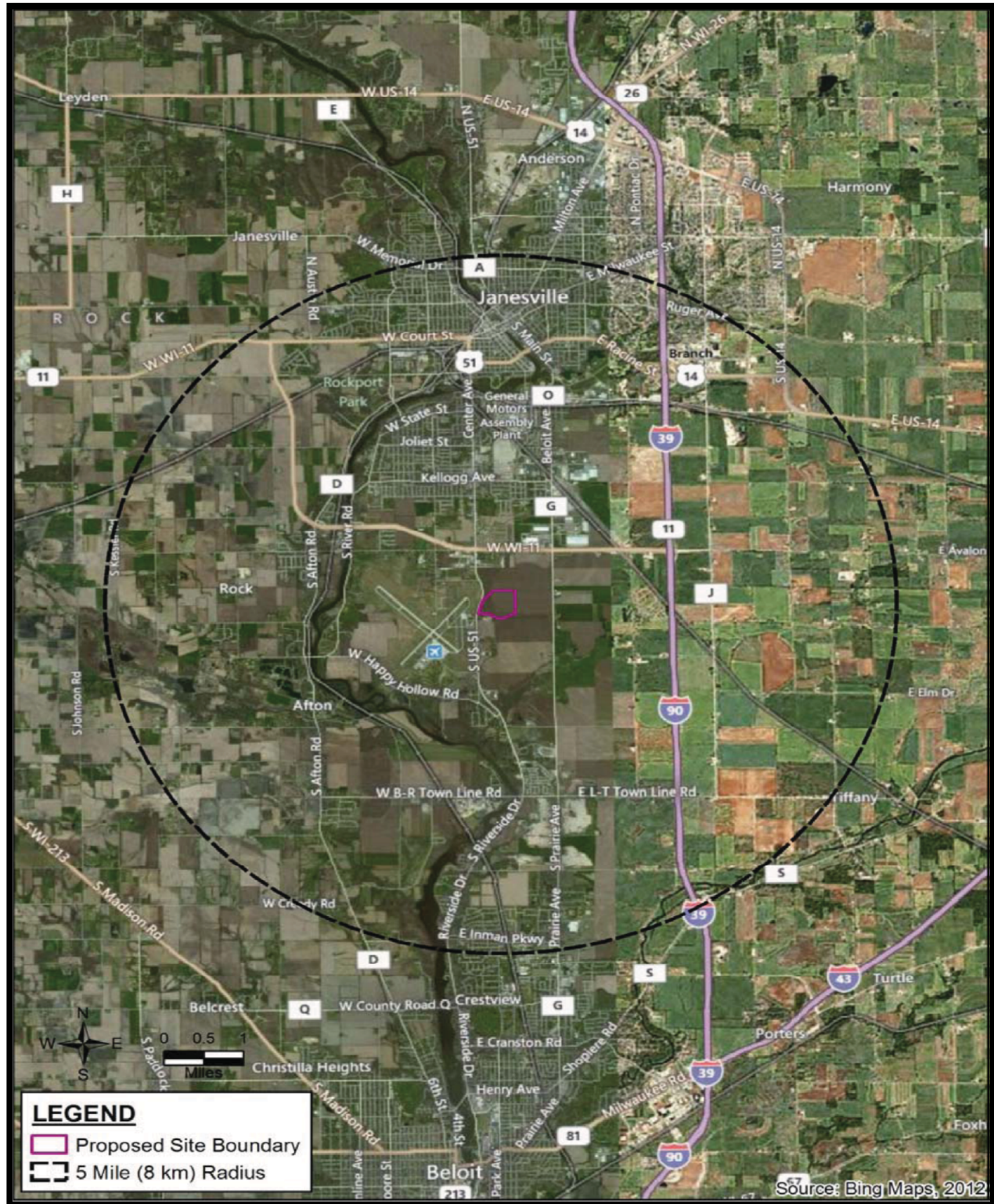
ADAMS Accession Nos: ML19323E507 – Letter

***via email**

OFFICE	NMSS/REFS/EMRB	NMSS/REFS/ELRB	NMSS/REFS/ENRB	NMSS/REFS/ELRB
NAME	*AWalker-Smith	RHoffman	JDavis	RElliott
DATE	11/19/2019	11/20/2019	11/26/2019	11/27/2019

OFFICIAL RECORD COPY

Enclosure 1: Area Map, 6-mile radius



Enclosure 2: Aerial View of the SHINE Site

