

<b>LEGEND:</b>	
	EXISTING GROUND SURFACE CONTOUR & ELEVATION, FEET
	PROPOSED SURFACE CONTOUR & ELEVATION, FEET
	DRAINAGE CHANNEL
	EXISTING ROADS
	NATURAL DRAINAGE
	EXISTING FENCE
	STRUCTURES
	OVERHEAD POWER LINE
	LIMITS OF EARTHWORK
	$D_{50} = 27"$ RIPRAP
	$D_{50} = 3"$ RIPRAP
	BOTTOMLAND SEED MIX

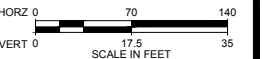
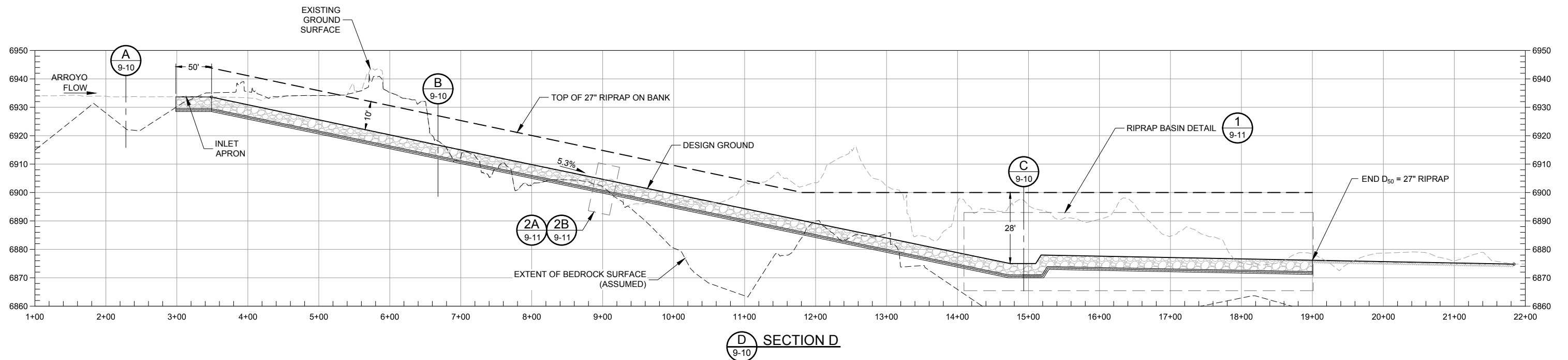
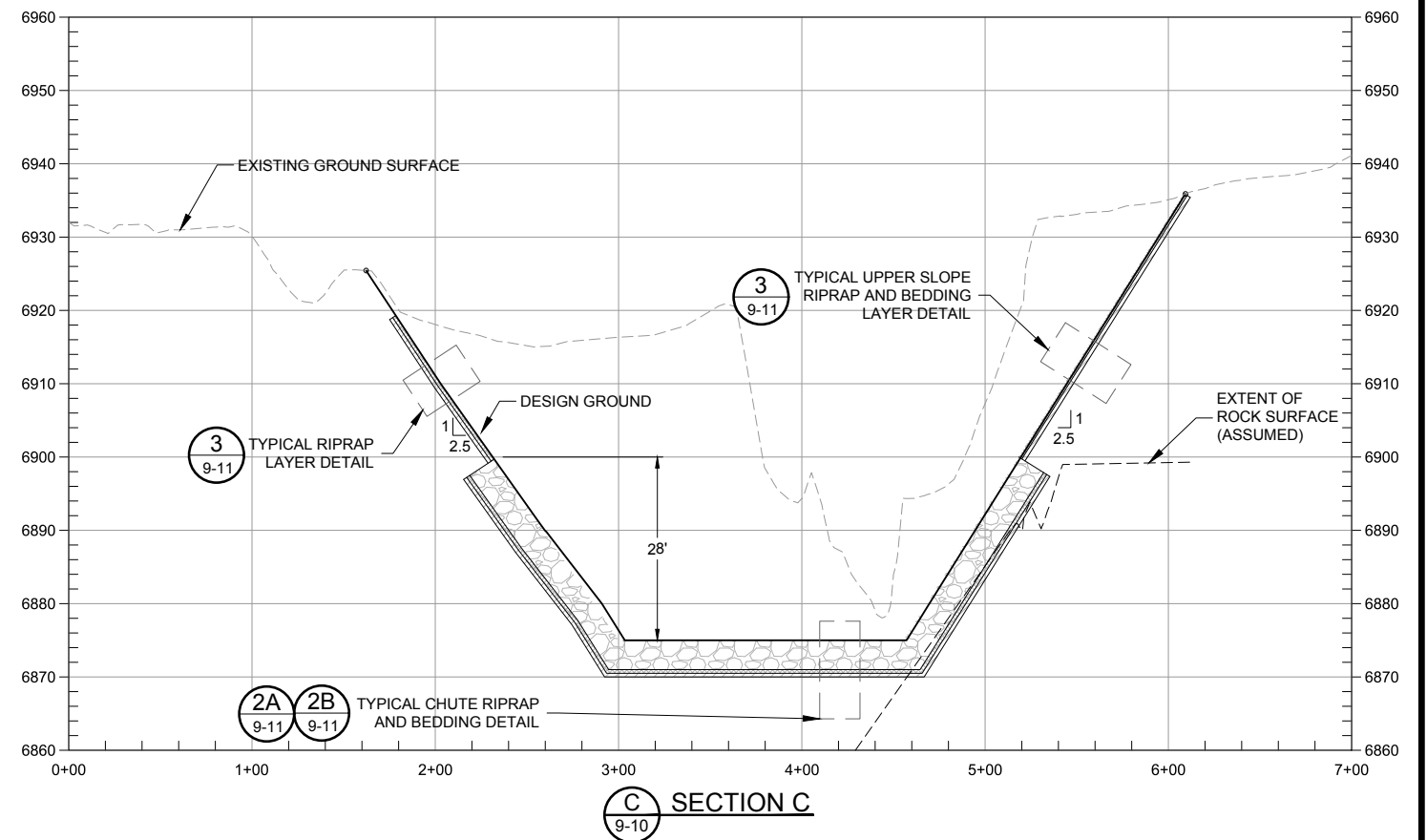
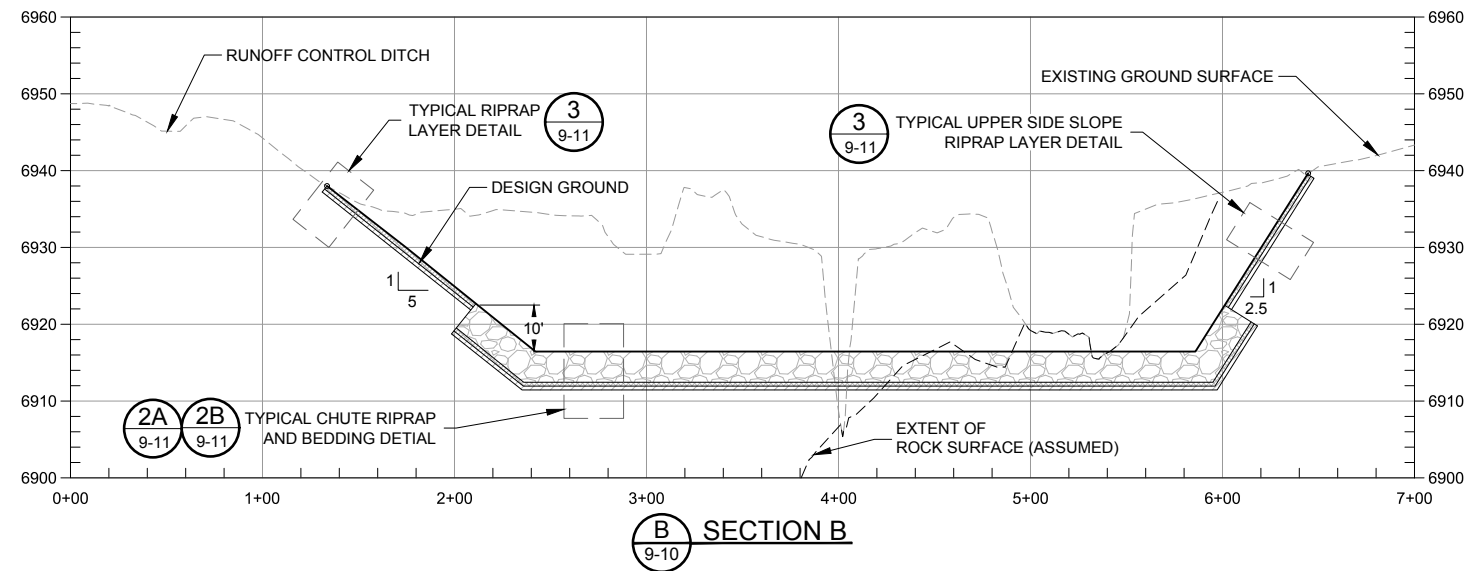
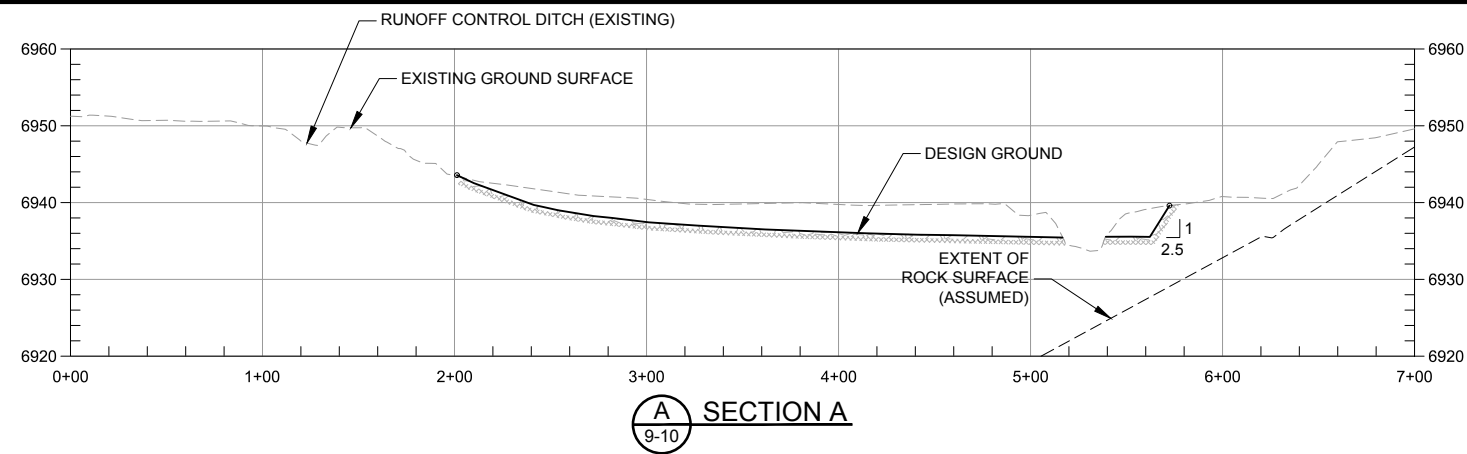
D	09/24/18	KR	ISSUED FOR LAR	DESIGNED <u>J. FRICKSON</u>
C	04/09/18	RW	ISSUED FOR REVISED 95% DESIGN	
B	10/30/17	KR	ISSUED FOR 95% DESIGN	CHECKED <u>N. HAWS</u>
A	07/15/16	RW	ISSUED FOR 30% DESIGN	
REV	DATE	BY	DESCRIPTION	APPROVED <u>J. CUMBERS</u>



UNITED NUCLEAR CORPORATION AND NORTHEAST CHURCH ROCK MINE  
McKINLEY COUNTY, NEW MEXICO  
NORTHEAST CHURCH ROCK PROJECT 95% DESIGN  
MILL SITE REPOSITORY AREA STORMWATER CONTROLS  
RIPRAP CHUTE

HEET  
-09  
001048

p:\m\nevwin103.mnhglobal.com:AM\_PROJECTS\202\Documents\General Electric (GE) NECR Design\Civil\Sheet Sets\NECR-95%\_V2\_REVISED\_DESIGN\_DRAWINGS\09-95.2\_MILL\_SITE\_SW\_CONTROLS\NECR 9-10 MILL SITE PIPELINE PROFILE.dwg LAYOUT:Profile PLOT DATE:10/28/2019 3:00 PM BY:KWEED



D	11/01/19	KR	ISSUED FOR LAR	DESIGNED	J. ERICKSON
C	04/09/18	RW	ISSUED FOR REVISED 95% DESIGN	CHECKED	N. HAWS
B	10/30/17	KR	ISSUED FOR 95% DESIGN	APPROVED	J. CUMBERS
A	03/15/16	RW	ISSUED FOR 30% DESIGN		
REV	DATE	BY	DESCRIPTION		

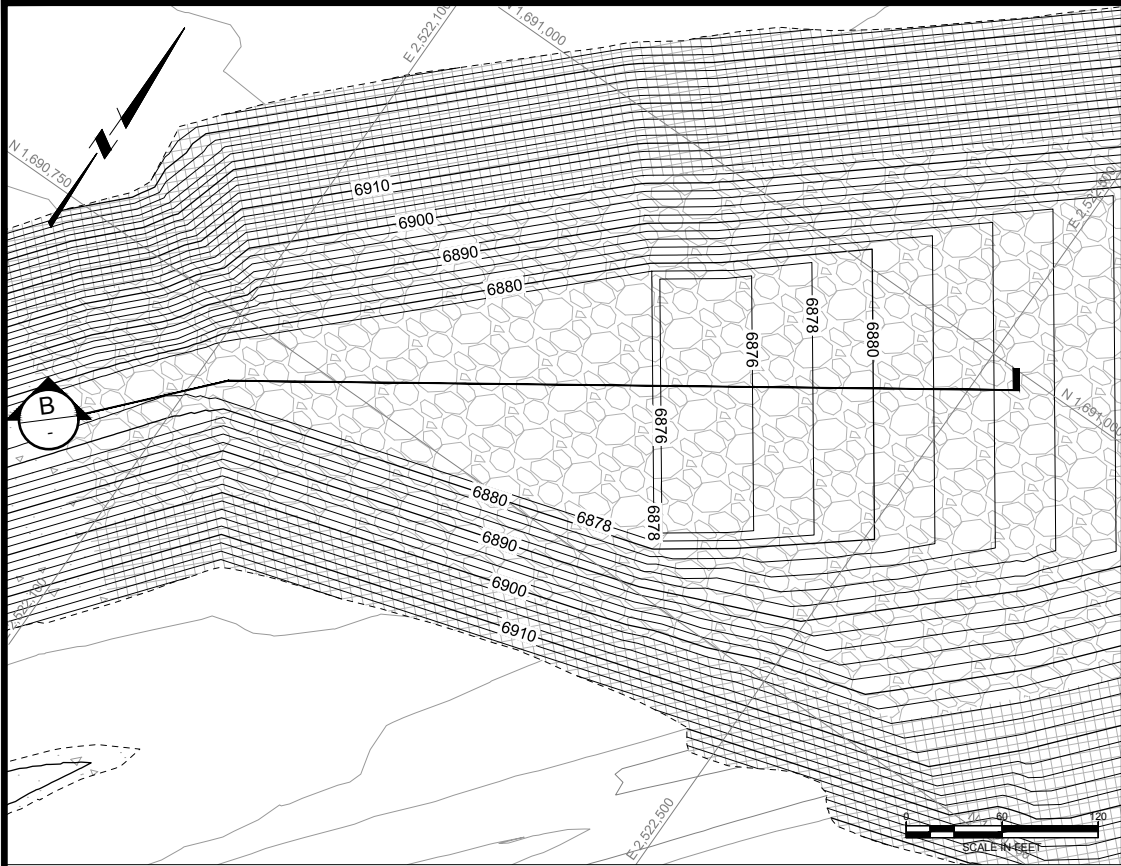


UNITED NUCLEAR CORPORATION AND NORTHEAST CHURCH ROCK MINE  
MCKINLEY COUNTY, NEW MEXICO  
NORTHEAST CHURCH ROCK PROJECT 95% DESIGN  
MILL SITE REPOSITORY AREA STORMWATER CONTROLS  
RIPRAP CHUTE SECTIONS

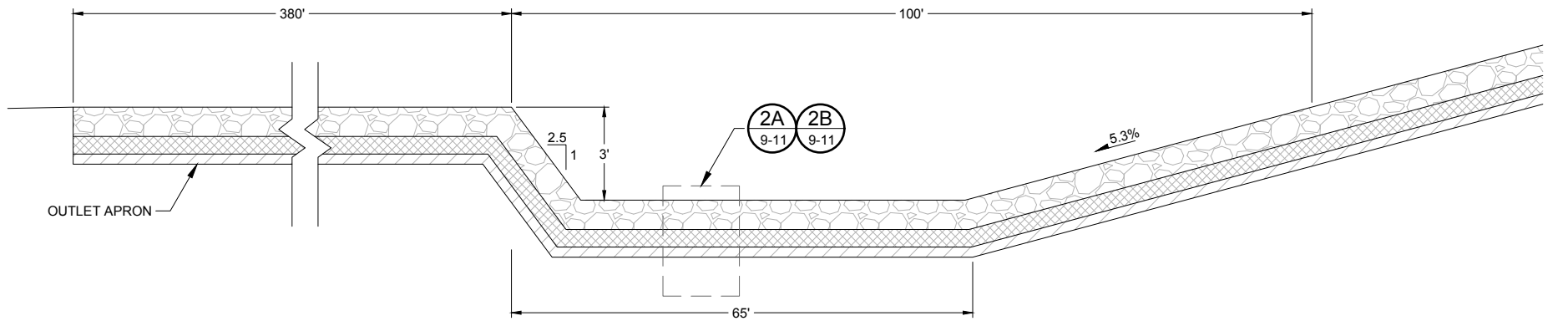
SHEET  
9-10  
233001048



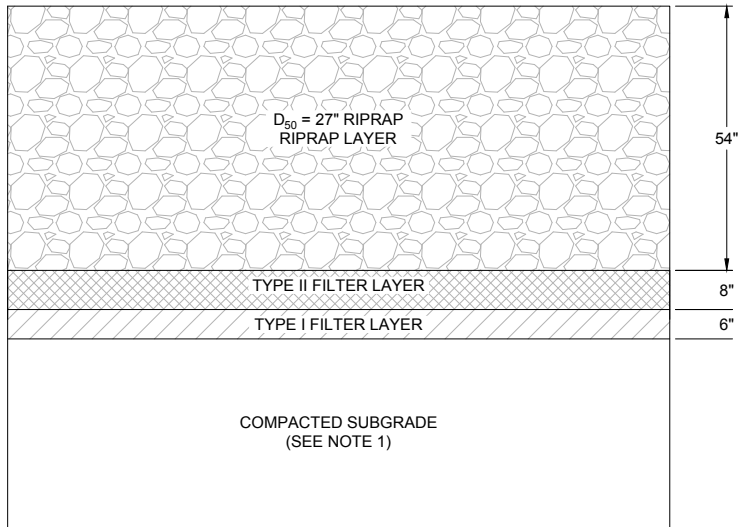
p:\c\omerve\103.mh\global.com:AM\_PROJECTS\202\Documents\General Electric\GE\_NECR\_Design\Civil\Sheet Sets\NECR-95%\_V2\_REVISED\_DESIGN\_DRAWINGS\09-95%\_V2\_SITE\_SW\_CONTROLS\NECR 9-11\_LAYOUT\Details.dwg LAYOUT:Profile PLOT DATE:10/28/2019 8:36 AM BY:KWEED



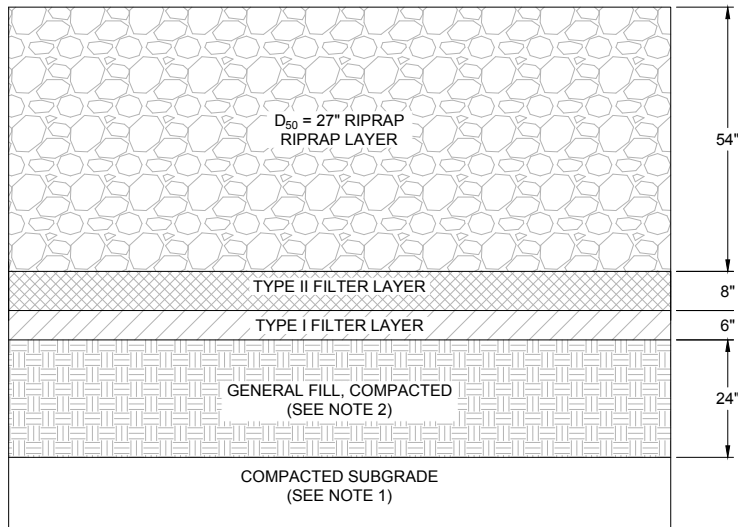
1  
9-11 RIPRAP BASIN - PLAN



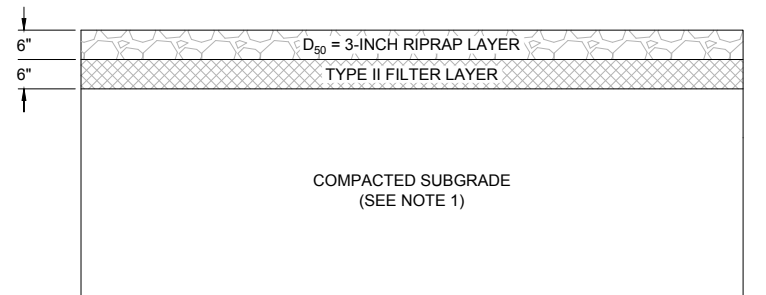
B  
9-11 SECTION B - RIPRAP BASIN  
(NOT TO SCALE)



2A  
9-11 TYPICAL CHUTE RIPRAP AND BEDDING DETAIL  
FOR AREAS OF CUT (NOT TO SCALE)



2B  
9-11 TYPICAL CHUTE RIPRAP AND BEDDING DETAIL  
FOR AREAS OF FILL (NOT TO SCALE)



3  
9-11 TYPICAL UPPER SIDE SLOPE RIPRAP AND BEDDING DETAIL  
(NOT TO SCALE)

NOTES:

1. PREPARE AND COMPACT UPPER FOOT TO MINIMUM 95% OF MAXIMUM DRY DENSITY PER STANDARD PROCTOR.
2. COMPACT TO 95% MAXIMUM DRY DENSITY PER STANDARD PROCTOR IN 6-INCH LIFTS.

D	11/01/19	KR	ISSUED FOR LAR	DESIGNED	J. ERICKSON
C	04/09/18	KR	ISSUED FOR REVISED 95% DESIGN	CHECKED	N. HAWS
B	10/30/17	KR	ISSUED FOR 95% DESIGN	APPROVED	J. CUMBERS
A	03/15/16	RW	ISSUED FOR 30% DESIGN		
REV	DATE	BY	DESCRIPTION		



UNITED NUCLEAR CORPORATION AND NORTHEAST CHURCH ROCK MINE  
MCKINLEY COUNTY, NEW MEXICO  
NORTHEAST CHURCH ROCK PROJECT 95% DESIGN  
MILL SITE REPOSITORY AREA STORMWATER CONTROLS  
RIPRAP CHUTE DETAILS

SHEET  
9-11  
233001048