



Stantec Consulting Services Inc.

3325 S Timberline Road #150
Fort Collins, Colorado 80525

November 11, 2019

File: 233001369

Submitted electronically and via US Mail

Attention: Mr. James Smith, Senior Project Manager

United States Nuclear Regulatory Commission

Uranium Recovery and Materials Decommissioning Branch

Division of Decommissioning, Uranium Recovery and Waste Programs

Office of Nuclear Material Safety and Safeguards

Dear Mr. Smith,

Reference: Responses to Request for Additional Information (Group 2) on the Application for Amendment of USNRC Source Material License SUA-1475 for the United Nuclear Corporation Mill Site, McKinley County, New Mexico (2nd submittal)

On behalf of United Nuclear Corporation and the General Electric Company (UNC/GE), this letter transmits responses to the USNRC request for additional information (Group 2) on the *Application for Amendment of USNRC Source Material License SUA-1475 for the United Nuclear Corporation Mill Site* dated September 24, 2018. USNRC provided the request to UNC/GE via a letter dated July 31, 2019. The responses included in this submittal are for all RAI comments 2.2-1, 2.4-1, 4.3-2, 4.3-3, 4.4-1, 4.4-2, and 4.5-1. Responses to the remaining comments were provided to USNRC on October 14, 2019. The responses included with this submittal and associated revised sections of the application have been submitted electronically via the USNRC Electronic Submissions System and the requested modeling files have been submitted on CD via US Mail.

Please contact me with questions on accessing the documents and contact Roy Blickwedel (UNC/GE) with questions on the submittal.

Regards,

Stantec Consulting Services Inc.

A handwritten signature in blue ink that reads "Melanie M. Davis".

Melanie Davis, P.E., PMP

Project Manager

Phone: 970.212.2749

melanie.davis@stantec.com

Attachment: Responses to USNRC Comments on the Application for Amendment of USNRC Source Material License SUA-1475 for the United Nuclear Corporation Mill Site (2nd submittal)

CC: Roy Blickwedel, GE
Jason Cumbers, Stantec
Steve Dwyer, Dwyer Engineering



ATTACHMENT

**Responses to USNRC Comments (Group 2) on the Application for Amendment of USNRC Source
Material License SUA-1475 for the United Nuclear Corporation Mill Site (2nd submittal)**

Request for Additional Information – Group 2 Safety Evaluation Report

Section 2 - Geology and Seismology

RAI 2.2-1 Structural and Tectonic Features

Provide additional information on the local structural features discussed in 'Application for Amendment' and Appendix G.1 and identified below.

The Church Rock site is in the vicinity of three local structural features. These local features are:

- Pipeline Canyon Lineament
- Fort Wingate Lineament
- Pinedale Monocline

Although Canonie (1987) describes both the Pipeline Canyon Lineament and the Fort Wingate Lineament as monoclinal hinge zones with sufficient fracturing to modify flow within the site, NRC staff is not clear on if the processes that formed the lineaments with associated fault zones are still active. If the lineaments are some type of faults, it is not clear why they were not included in the analysis similar to the previous analyses. Specifically, seismic hazard analyses were previously conducted by Lawrence Livermore National Lab in 1994 for the design of the uranium mill and the tailings site (NRC, 1997). This deterministic analysis was based on the presence of the Pipeline Canyon and Wingate Lineaments.

The information is required for the NRC staff to determine whether 10 CFR Part 40, Appendix A, Criterion 4(e) is met with respect to the proposed amendment, which requires that an acceptable alternate method of determination of seismic hazard has been used or that tailing impoundments are not located near a capable fault. This information is also needed to determine whether Criterion 6(1) is met.

RESPONSE: *UNC evaluated the Pipeline Canyon Lineament, Fort Wingate Lineament, and the Pinedale Monocline. The data interpretation supports a general lack of evidence for the Pipeline Canyon and Fort Wingate Lineament features to represent active faults in this region. The overall lack of geomorphology, as well as lack of offset in older bedrock, is supported by the fact that these features are not included on published USGS geologic and structural maps. Additionally, the Pinedale Monocline is not considered an active fault based on its structure. Therefore, UNC did not revise the seismic hazard analysis (SHA) but the SHA report was updated to reflect the evaluation of the lineaments and monocline. The revised report is included as Attachment 1 to this submittal. The discussion on these structures is in the revised SHA report – see Section 4.1.1 – Lineaments and Monoclines. Also, Section 1.1 and Section 8.0 of the SHA report were revised to accurately reflect the 1994 Lawrence Livermore National Laboratory (LLNL) study. LLNL (1994) performed an analysis considering a random (or background) earthquake and reported values for range of magnitude and return periods. The revised SHA report sections now accurately state results of the LLNL (1994) study, providing clarification for previous studies.*

RAI 2.4-1 Seismicity and Ground Motion Estimates

Identify the fault responsible for the closest seismic event to the Church Rock site: An Mw 4.7 event that occurred on January 5, 1976 approximately 16 miles (26 km) from the site.

Appendix G, Attachment G.1 presents the results of a seismic hazard analysis. Section 4.2 discusses the historic seismic record of the Colorado Plateau and the Fault responsible for the closest seismic event to the Church Rock site. It is not clear to NRC staff why this fault was not identified and why it was not included in the seismic hazard analysis or described in Appendix G, Attachment G.1, Section 4.1.

The information is required for the NRC staff to determine whether 10 CFR Part 40, Appendix A, Criterion 4(e) is met, which requires that an acceptable alternate method of determination of seismic hazard has been used or that tailing impoundments are not located near a capable fault. This information is also needed to determine whether Criterion 6(1) is met.

RESPONSE: *Two earthquakes were recorded within 50 km of the Mill Site: a January 5, 1976 m_b 5.0 earthquake and a March 5, 1977 m_b 4.6 earthquake. These two earthquakes were the focus of a study performed by Wong et al. (1984). The study concluded that due to unusually deep focal depths, they are likely not associated with a geologic structure expressed at the surface. Based on this conclusion, the two earthquakes were assumed part of the background seismicity in the region. The SHA was not revised as the two earthquakes were already included in the development of the background seismic source. The SHA report was updated to discuss these two events, as they were the two closest earthquakes to the site.*

RAI 2.4-2 Seismicity and Ground Motion Estimates

Provide the technical basis for not considering the tailings in estimating the shear wave velocity.

Appendix G, Attachment G.1, Section 4.3 explained that the tailings were not considered in estimating the shear wave velocity because this site-wide Seismic Hazard Analysis was performed to estimate peak accelerations at the original ground surface. The shear wave velocity was estimated in the top 100 feet (30 meters, V_{S30}) of the original ground surface. The mine waste repository will be placed over the existing tailings and in some locations the tailings are approximately 20 m thick. With regards to the mine waste repository, it is not clear why the top of the existing tailings would not be considered “the original ground surface.”

The information is required for the NRC staff to determine whether 10 CFR Part 40, Appendix A, Criterion 4(e) is met, which requires that an acceptable alternate method of determination of seismic hazard has been used or that tailing impoundments are not located near a capable fault. This information is also needed to determine whether Criterion 6(1) is met.

RESPONSE: *This response was provided with the first submittal of responses to RAI Group 2, submitted to the NRC on October 14, 2019.*

Section 3 - Geotechnical Stability

RAI 3.2-1 Mine Waste Characteristics

More than 50 percent of the estimated mine site debris volume is composed of organic material, including logs. Provide the technical basis for why any void space created by organic decomposition will not create subsidence in the mine waste repository area or explain why the presence of voids would not be an issue.

Appendix C.4.2.2, Table C.4-3 gives estimated mine site debris volumes. 10,000 yd³ is listed as vegetation debris type and 2600 yd³ is given as wood. This is roughly 55 percent of the overall debris volume of 22,800 yd³, or almost 2 percent of the total volume within the proposed mine waste repository. As this organic matter decomposes, that volume would be occupied, in time, by void space and, ultimately, by other mine spoils. Subsidence due to such a large volume could impact the integrity of the mine waste repository.

The information is required for the NRC staff to determine whether 10 CFR Part 40, Appendix A, Criterion 1, 3, 4(e), 5(G)(2), and 6(1) would be met.

RESPONSE: *This response was provided with the first submittal of responses to RAI Group 2, submitted to the NRC on October 14, 2019.*

RAI 3.8-1 Disposal Cell Hydraulic Conductivity

Provide electronic input and output files, including descriptive labels, of the UNSAT-H runs described in Appendix G, Attachment G.7 and in Appendix Y.

The simulations performed with UNSAT-H provide estimates of the rate of water infiltrating into the future repository, tailings, and aquifer. Electronic copies of these calculations with descriptive labels are needed for the NRC staff's review, as well as to focus staff efforts on risk significant features and processes. The information is required for the NRC staff to demonstrate compliance with the following criteria in 10 CFR Part 40, Appendix A: Criterion 4(c), which provides requirements for the embankment and cover slopes for tailings and Criterion 6(1), which requires that impoundment designs provide reasonable assurance of control of radiological hazards to be effective for 1,000 years to the extent reasonably achievable, and in any case, for at least 200 years.

RESPONSE: *This response was provided with the first submittal of responses to RAI Group 2, submitted to the NRC on October 14, 2019.*

RAI 3.8-2 Disposal Cell Hydraulic Conductivity

Provide a clear definition for potential evapotranspiration (PET), evaporation (E), and transpiration (T) calculated in UNSAT-H.

It is not clear to NRC staff why two definitions for PET were presented in both Appendix G, Attachment G.7 and in Appendix Y. Penman's equation on page 42

in Appendix G, Attachment G.7 does not include precipitation within the definition of PET while the definition for PET presented on page 47 includes precipitation as part of the definition, but does not include daily wind speed, relative humidity, and net solar radiation. Figures 14 and 15 in Attachment G.7 appear to present monthly PET rates that include precipitation since the two PET rates in the two figures differ. [In addition, although Appendix G, Attachment G.7, Fig. 14 and in Appendix Y, Fig. 12 are representing the same set of values, the figures are different.]

NRC staff is also not clear about the transpiration and evaporation values as calculated by UNSAT-H and as described on page 47, e.g., “potential evaporation is estimated or derived from daily weather parameters.” Both components are described as potential (i.e., T_p and E_p); however, the simulated values of “Transp” and “Evap” as presented in Tables A1 - A8 from Appendix Y do not equal the “PET” column from the tables and, instead, may be actual transpiration and actual evaporation.

The information is required for the NRC staff to demonstrate compliance with the following criteria in 10 CFR Part 40, Appendix A: Criterion 4(c), which provides requirements for the embankment and cover slopes for tailings and Criterion 6(1), which requires that impoundment designs provide reasonable assurance of control of radiological hazards to be effective for 1,000 years to the extent reasonably achievable, and in any case, for at least 200 years.

RESPONSE: *This response was provided with the first submittal of responses to RAI Group 2, submitted to the NRC on October 14, 2019. Appendix G, Attachment G.7 and Appendix Y were updated based on the response and are included as Attachment 2 to this submittal.*

RAI 3.8-3 Disposal Cell Hydraulic Conductivity

Provide additional information to support the claim made in Appendix G, Attachment G.7, Section 5.1 that even if infiltration events could potentially move deeper than the CaCO_3 - bearing horizon, this moisture would likely move back up in the profile and be removed via evapotranspiration (ET).

Although pages 33 and 51 in Appendix Y state that there is no simulated percolation in the model, the application states that water that would infiltrate deeper would be pulled back up and removed as evaporation. Figure 20 presets the 63-year long run results including the first three years without vegetation. For those first years, the annual flux appears to drop especially fast (over 10 cm/yr) within the upper few centimeters of the proposed mine spoil repository. Since transpiration is no longer a mechanism without vegetation, the evaporation process is the most significant process by which water is removed from the cover during this period. Even with vegetation present, evaporation is still the dominant process to remove water from the disposal system in the simulation results presented in Appendix G, Attachment G.7, Appendix A, showing evaporation rates removing more than 50 percent of the rainfall per year for all sensitivity analysis runs including simulated wet years. Consequently, NRC staff is especially interested in the evaporation process and the significant factors that can influence Fick’s law (used to calculate evaporation), such as soil compaction, hydraulic conductivity, soil type, and thickness of the 4-ft admixture / no-rock soil layer. A

comparison with the existing cover and the surrounding area is also of interest: Is there recharge in the borrow areas and the area surrounding the Church Rock site? If yes, why is the evaporation rate insufficient to stop deep percolation in these areas and in the existing radon barrier cover on the Church Rock mill tailings cell (see, e.g., Appendix Y, page 38). That is, what factors enhance the evaporation rates for the future evapotranspirative (ET) cover design?

In addition, what is the depth limit for the effect of evaporation and what factor determines that limit? For example, Figure 22 in Appendix Y shows the mine spoils losing water and becoming drier down to circa 5 m. Appendix Y, Figure 17 indicates that the upward movement of moisture and subsequent evaporation is responsible. The depth between upward movement of moisture and downward movement of moisture should be identified within the mine spoil repository. If the mine spoils are drying out by moving water to the upper ET layers, how much does this contribute in percentage to the overall water budget calculated by the UNSAT-H model? In addition, a technical basis and detailed explanation should be provided for the upward movement of water in the mine spoil repository layers?

The information is required for the NRC staff to demonstrate compliance with the following criteria in 10 CFR Part 40, Appendix A: Criterion 4(c), which provides requirements for the embankment and cover slopes for tailings and Criterion 6(1), which requires that impoundment designs provide reasonable assurance of control of radiological hazards to be effective for 1,000 years to the extent reasonably achievable, and in any case, for at least 200 years.

RESPONSE: *This response was provided with the first submittal of responses to RAI Group 2, submitted to the NRC on October 14, 2019.*

RAI 3.8-4 Disposal Cell Hydraulic Conductivity

Provide water budget tables for the 4-foot “store and release” cover (i.e., the admixture and the soil cover without rock) showing the soil water storage capacity of this important unit over time. Current tables do not show what amount of water is stored in that layer, the amount of water infiltrating through the bottom of the store-and-release unit (i.e., 4 ft.), and the amount of water moving back up into the store-and-release unit by means of evaporation.

Tables in Appendix G, Attachment G.7, Appendix A do not provide this information. Using Table 64, Wet Year #1 as an example (and ignoring the PET value), inflow does not match the outflow and the difference ($60.35 - 7.9 - 44.875 - 4.295 - 0 = 3.28$ cm) may represent the storage capacity for that year, but it is not identified as such. What is the limit that the design store-and-release layer can hold as storage water before water moves downward into the mine spoils themselves?

The information is required for the NRC staff to demonstrate compliance with the following criteria in 10 CFR Part 40, Appendix A: Criterion 4(c), which provides requirements for the embankment and cover slopes for tailings and Criterion 6(1), which requires that impoundment designs provide reasonable assurance of control of radiological hazards to be effective for 1,000 years to the extent reasonably achievable, and in any case, for at least 200 years.

RESPONSE: *This response was provided with the first submittal of responses to RAI Group 2, submitted to the NRC on October 14, 2019.*

RAI 3.8-5 Disposal Cell Hydraulic Conductivity

- i. Provide additional information concerning the uncertainty involved with the UNSAT-H output. Produce additional sensitivity runs to provide reasonable assurance that the chosen parameter values conservatively bound performance and therefore bound uncertainty.
- ii. Although validating the UNSAT-H model associated with the license amendment is not practicable, confidence that the model performs for the purposes for which it is designed is important. For example, documents describing other sites or projects that validated UNSAT-H percolation estimates (i.e., subsequent field studies verified that the simulated results for those sites were close to actual results) would support current UNSAT-H model results.
- iii. Provide references or validation documents that UNSAT-H can meaningfully predict the amount of percolation or infiltration when the precipitation is in the form of snow.
- i. Provide additional information concerning the uncertainty involved with the UNSAT-H output. Specifically, how much uncertainty is involved with the Point of Diminishing Returns (PODR) calculation results as seen in Appendix G, Attachment G.7, Figure 18. A deterministic approach can be useful to bound uncertainty when the analysis can be demonstrated to be conservative. Appendix G, Attachment G.7, Section 7 states that although the varied input parameters such as soil, vegetation and cover profile geometry showed some sensitivity, the most sensitive item was the climatic variation. If precipitation is the dominant process influencing performance, additional sensitivities case should be run to provide reasonable assurance that the chosen parameter values conservatively bound performance. Appendix Y, Section 4.2.2 claims that the 20-year UNSAT-H run average-wet-average precipitation is conservative. Provide additional information to support this conclusion, since the reports do not show how the soil water storage capacity is reacting. Figures 21 and 22 do provide some information in this regard; however, the extremely high soil suction in the fill layers (initial suction is in the millions of -cm) prevents a close analysis of what is happening in the “store and release” cover. Because precipitation is assessed in the application to be the most sensitive item, various combinations of long-term dry, average, and wet cycles, for example, could show which combinations are the most plausible, and thus demonstrate conservatism in the approach. These could be combined with additional scenarios, e.g., fire or drought may destroy the vegetation so that transpiration is minimal for several years. The ranges in the parameters selected should be consistent with the variability and uncertainty in the parameters, and the selected ranges should provide the NRC staff with sufficient information to conclude that uncertainty on performance is bounded. If the factors that affect the evaporation rate are included in the UNSAT-H code as adjustable parameter variables, these factors should be varied and included in additional sensitivity runs.
- ii. Gauging uncertainty through formal validation exercises, such as model calibration, history matching, and prediction, is difficult for long-term disposal

projects. But confidence that the models perform as they are designed, capture relevant features and processes of the disposal system being modeled, and reflect the uncertainty in system knowledge remains central. Previous applications of predicting long-scale recharge using UNSAT-H may have been later validated by subsequent field studies. Providing such documentation would help support current model results.

- iii. The Fort Wingate weather data set contained the wettest year on record (1906), having an annual precipitation volume of 23.8 inches (84.8 cm). Much of the precipitation came in as snow from January to April and October to December. This is a period when PET should be low and transpiration of moisture through vegetation is minimized or completely ceased in the modeling, although Appendix Y's Figures 12 and 13 still show relatively high PET for these months. Even on sunny days, evaporation from a layer of snow would be minimal, besides a small amount of sublimation, so that most of the snow thickness would melt and infiltrate unhindered into the soil. NRC staff is not clear during what time of the year potential evaporation rates at the Church Rock site are sufficiently high enough to draw water back up from the soil, but this appears to not be possible during the winter months.

The information is required for the NRC staff to demonstrate compliance with the following criteria in 10 CFR Part 40, Appendix A: Criterion 4(c), which provides requirements for the embankment and cover slopes for tailings and Criterion 6(1), which requires that impoundment designs provide reasonable assurance of control of radiological hazards to be effective for 1,000 years to the extent reasonably achievable, and in any case, for at least 200 years.

RESPONSE: *This response was provided with the first submittal of responses to RAI Group 2, submitted to the NRC on October 14, 2019.*

RAI 3.8-6 Disposal Cell Hydraulic Conductivity

Cedar Creek (2014) documented vegetation characterization and biointrusion surveys. The biointrusion survey appears to have been confined to mammals. NRC staff have observed on several occasions that there are numerous ant colonies on the current Church Rock cover, so that one could assume that the future cover will also have such colonies. In addition, the report states that the root system of a fourwing saltbush may extend 2 to 6 m below the surface and the root system of big sagebrush may extend 1 to 4 m below the surface. Could deeper ant colonies and plants with longer taproots bring mine spoil material to the surface, or does the licensee believe that a lack percolation will affect the vegetation growing on the cover such that these characteristics would not be in common with the current cover; please provide the basis for this conclusion. Does the licensee have a basis for concluding that hydraulic conductivity values are not sufficiently altered so that UNSAT-H results are influenced, or if not, what would that impact be?

In addition, provide references for the projected communities that are expected to inhabit the repository for the following timeframes (page 2):
Reclaimed: 0 - 50 years; grassland: 25 - 100 years; shrubland: 50 - 1,000 years.

The information is required for the NRC staff to demonstrate compliance with the following criteria in 10 CFR Part 40, Appendix A: Criterion 4(c), which provides requirements for the embankment and cover slopes for tailings and Criterion 6(1), which requires that impoundment designs provide reasonable assurance of control of radiological hazards to be effective for 1,000 years to the extent reasonably achievable, and in any case, for at least 200 years.

RESPONSE: *This response was provided with the first submittal of responses to RAI Group 2, submitted to the NRC on October 14, 2019.*

RAI 3.8-7 Disposal Cell Hydraulic Conductivity

There are several items in Appendix Y that require clarification. A statement or question is associated with each item below. NRC staff asks that the sufficient additional information be provided for each item.

From Appendix Y:

- a) Table 9:
 - Why does the radon barrier have a higher K_s value than the fill (3.6×10^{-5} vs. 2.5×10^{-5} cm/s)?
 - Why does the K_s value for the recompacted radon barrier after the construction of the repository (3.6×10^{-5} cm/s in Tab. 11) have the same K_s value of the existing radon barrier (3.6×10^{-5} cm/s in Tab. 9)?
- b) Table 12:
 - Why are the initial suction values for the fill soil so high (4407686039.0-cm)?
 - Why is the initial suction value for the middle of the radon barrier/liner so high in Figure 23 (over 6000-cm)? Does the compacted radon barrier need to stay moist for it the function as a radon barrier?
- c) Figure 16:
 - Why is there no wet 12th year in the simulation results for profile B2?
 - Why does the annual flux (cm/year) value drop below that of the 10th year?
- d) Figures 21 and 22:
 - Provide labels for the units or layers presented in these figures.
- e) Figure 24:
 - What occurs in the middle of the mine spoils to cause the relatively abrupt change in matric potential around the year 2025?
- f) Table A3:
 - i. Why is T (transpiration) from the existing cover for Year 1 less than half of the T value from the future cover in Table A4?
 - ii. Why is there no change in T at Years 11 and 12?
 - iii. Some years have a combined value of T and E that is higher than Precipitation; do these values include contribution from upward movement of water from the mine spoils?
- g) Table A4:
 - i. Why do values for E seem very high for years 11 and 12? Is any of the precipitation water not accessible for evaporation, or is all

- precipitation water available to the evaporation process at all times, and what is the licensee's basis for this assumption?
- ii. For Year 11 there are 4.22 cm of precipitation that is not removed through transpiration, evaporation, or runoff. For Year 20 there are 0.391 cm of precipitation that is not removed through transpiration, evaporation, or runoff. Is this extra water storage within the 4 ft? Water storage data are needed.
 - iii. For most years, ET plus runoff does not balance out with precipitation, i.e., outflow does not equal inflow.
 - iv. Is "Drain" the same as percolation or deep infiltration?
 - v. Why are the transpiration values generally higher for the results presented in Appendix A of Appendix Y than for Appendix G, Attachment G.7, Appendix A?

The information is required for the NRC staff to demonstrate compliance with the following criteria in 10 CFR Part 40, Appendix A: Criterion 4(c), which provides requirements for the embankment and cover slopes for tailings and Criterion 6(1), which requires that impoundment designs provide reasonable assurance of control of radiological hazards to be effective for 1,000 years to the extent reasonably achievable, and in any case, for at least 200 years.

RESPONSE: *This response was provided with the first submittal of responses to RAI Group 2, submitted to the NRC on October 14, 2019.*

Section 4 - Surface Water Hydrology and Erosion Protection

RAI 4.1-1 Hydrologic Description of Site

Please either add Figure 4.2-12 in Appendix I or indicate a correct figure number for NRC's technical review.

Section 3.1.3 of the SRP directs the NRC staff to review the description of structures, facilities, and erosion protection designs to determine if they are sufficiently complete to allow for an independent evaluation of flooding. In Section 4.2.3, the licensee stated, "...The chute will slope longitudinally at 5.3 percent for about 56 feet vertically, where the flood flows will discharge into a sunken riprap basin. A 5.3 percent slope was selected over steeper slopes that would have less excavation volumes because the 5.3 percent slope grades the chute beyond the steep drop in the arroyo bed (see Appendix I, Figure 4.2-12)."

The Figure 4.2-12 is missing in Appendix I. The missing information is related to the flood flow analysis for the design of riprap chute and the hydraulic design for the sunken riprap basin.

This information is required for the NRC staff to determine whether 10 CFR Part 40 Appendix A, Criterion 1 is met, which relates to minimization of erosion, disturbance, and dispersion by natural forces.

RESPONSE: *This response was provided with the first submittal of responses to RAI Group 2, submitted to the NRC on October 14, 2019.*

RAI 4.2-1 Flooding Determinations

In attachment G.7 of the LAR, the licensee uses the Rational Method to estimate the amount of runoff in its calculation of the rock sizing for the top slopes of the final cover system over the mine waste repository. In the calculation, the licensee uses a runoff coefficient of 0.3, which is not consistent with the guidance in NUREG-1620 and not otherwise supported. Please justify the use of this value. Alternatively, the licensee can revise the calculation based on a runoff coefficient of 0.8.

NUREG-1620, Section 3.2.3, acceptance criteria states that correct model input parameters should be used in the analysis. The NRC staff observes that NUREG-1623 recommends using a value of 0.8 for the runoff coefficient (see page D-7). Additionally, the NRC staff observes that the calculation for rock sizing along the 20 percent slope in Attachment G.8 uses a runoff coefficient of 0.8.

This information is required for the NRC staff to determine whether 10 CFR Part 40 Appendix A, Criterion 1 is met, which relates to minimization of erosion, disturbance, and dispersion by natural forces.

RESPONSE: *This response was provided with the first submittal of responses to RAI Group 2, submitted to the NRC on October 14, 2019.*

RAI 4.2-2 Flooding Determinations

Please justify the use of the Brandt and Oberman method used to calculate the time of concentration in Attachment G.7 and in Attachment G.8 of the LAR. Neither the SRP or additional guidance in NUREG-1623 identify this method as one to consider when estimating the time of concentration. Alternatively, the licensee can consider using a method identified in the SRP or NUREG-1623 to calculate the time of concentration.

NUREG 1620, Section 3.2.3, acceptance criteria states that correct model input parameters should be used in the analysis and that the computational methods used for the design flood estimates are adequate. The time of concentration is a key factor in estimating the peak runoff. The NRC staff performed an independent check of the time of concentration calculations using a different method. The NRC staff's estimated times of concentration that were consistently shorter than what the licensee provided in Tables 3 and 4. As the relationship between time of concentration and peak discharge is inverse (a shorter time of concentration results in higher discharge), the licensee's calculations may not represent a conservative analysis.

This information is required for the NRC staff to determine whether 10 CFR Part 40 Appendix A, Criterion 1 is met, which relates to minimization of erosion, disturbance, and dispersion by natural forces.

RESPONSE: *This response was provided with the first submittal of responses to RAI Group 2, submitted to the NRC on October 14, 2019.*

RAI 4.2-3 Flooding Determinations

Please explain the 1.73 parameter that is used as a 'scale factor from 10-min to D' on the calculation worksheet in Attachment G.8. The NRC staff was not able to locate an explanation or source for this number.

NUREG-1620, Section 3.2.3 directs the staff to verify that model input parameters are accurate. It is not apparent to the NRC staff why the value of 1.73 was chosen or where it came from. This number is used in a calculation package to estimate the unit slope discharge for the 20 percent side slope on the proposed mine waste repository.

This information is required for the NRC staff to determine whether 10 CFR Part 40 Appendix A, Criteria 1, Criteria 4(a), Criteria 6(1) and Criteria 12 are met.

RESPONSE: *This response was provided with the first submittal of responses to RAI Group 2, submitted to the NRC on October 14, 2019.*

RAI 4.2-4 Flooding Determinations

Please correct the apparent inconsistencies indicated in the table below and provide this information to NRC. Because this correction is also related to RAI 4.2-5, please provide complete corrections related to the modeling input, output data, and modeling parameters where applicable.

NUREG-1620, Section 3.2.3 directs the NRC staff to verify that model input parameters and computational methods are accurate. The licensee provided the HEC-HMS model stored in a DVD for an amended Reclamation Plan. The HEC-HMS model is labelled as "NECR_95_HMS4.2.1." The model, "NECR_95_HMS4.2.1," has been reviewed by the staff. It is found that some input parameters and data assigned to the model are not consistent with the data shown in Attachment I.1 to Appendix I, MILL SITE STROMWATER CONTROLS. The inconsistencies are summarized in the below table.

Items	The licensee's parameter values used in the "NECR_95_HMS4.2.1" model are inconsistent with the values presented in the LAR application report. The tables in the report relevant to the inconsistencies are shown in the third column of	Attachment I.1 in Volume I report of the LAR application
1	Sub-watershed areas	Tables A2 and A5 of Attachment A to Attachment I.1
2	Existing Condition Rainfall Loss for watershed IDs, 19, 22, and 35.	Table C1 of Attachment C to Attachment
3	Maximum Storage	Tables C4 and C5 of Attachment C to Attachment I.1
4	Pond Surface Areas	Table F6 of Attachment F to Attachment

5	Area-weighted Averaged PMP Depth in the Pipeline Arroyo watershed is 6.543 inches for 6-hour duration.	Table 4 of Attachment I.1 presents 6.47 inches
6	Trapezoid Channel Bottom Widths	Table E3 of Attachment E to Attachment
7	Channel Lengths	Table E3 of Attachment E to Attachment

This information is required for the NRC staff to determine whether 10 CFR Part 40 Appendix A, Criterion 1, Criterion 4(a), Criterion 6(1) and Criterion 12 are met.

RESPONSE: *This response was provided with the first submittal of responses to RAI Group 2, submitted to the NRC on October 14, 2019.*

RAI 4.2-5 Flooding Determinations

Please provide a corrected file of “NECR_95_HMS4.2.1” that can be executed by the NRC staff to check the consistency between Attachment G and the “NECR_95_HMS4.2.1” modeling results.

The model, “NECR_95_HMS4.2.1,” has been reviewed by the staff. It found that some output data from “NECR_95_HMS4.2.1” model are not consistent with the data shown in Attachments G1 through G16 of Attachment G of Attachment I.1 to Appendix I MILL SITE STORMWATER CONTROLS. NUREG-1620, Section 3.2.3 directs the staff to verify that model input parameters and computational methods are accurate.

This information is required for the NRC staff to determine whether 10 CFR Part 40 Appendix A, Criterion 1, Criterion 4(a), Criterion 6(1) and Criterion 12 are met.

RESPONSE: *This response was provided with the first submittal of responses to RAI Group 2, submitted to the NRC on October 14, 2019.*

RAI 4.2-6 Flooding Determinations

Please correct the apparent inconsistencies as indicated in the table below. In reviewing the LAR, Appendix I, the NRC staff identified several apparent inconsistencies. The NRC staff provides the table below to show the inconsistencies in the LAR Volume I report. NUREG-1620, Section 3.2.3 directs the staff to verify that computational methods are accurate. With these inconsistencies, the NRC staff is not able to confirm the accuracy of the computational methods.

Inconsistencies found by comparing			
Items	Place One	Place Two	Inconsistency
1	Table 10 of Attachment I.1 shows PMF, 26,764 cfs. for	Table G1 of Attachment G to Attachment I.1 shows PMF, 26,443.5	PMF values

2	Table 10 of Attachment I.1 shows peak flow for a 100-year flood is 4,766 cfs.	Table G2 of Attachment G to Attachment I.1 shows 4,826.2 cfs.	100-year peak flood
3	Table 10 of Attachment I.1 shows peak flows for Temporal Culverts 11 through 16.	Tables G10 and G13 of Attachment G to Attachment I.1 show different peak flows when compared to	10-year peak flood
4	On page 2-2, Section 2.4.3 of Volume I, the licensee shows 1-hour	Table 2.9-1 of Volume 1 shows the PMP. That is	1-hour PMP depth
5	Table G1 of Attachment G to Attachment I.1 shows that a runoff volume is 31.302 inches for the model element "J-R16ds." This runoff volume is	Table 4 of Attachment I.1 shows that 1-hour PMP depth is 6.14 inches.	Runoff volume

This information is required for the NRC staff to determine whether 10 CFR Part 40 Appendix A, Criterion 1, Criterion 4(a), Criterion 6(1) and Criterion 12 are met.

RESPONSE: *This response was provided with the first submittal of responses to RAI Group 2, submitted to the NRC on October 14, 2019.*

RAI 4.2-7 Flooding Determinations

Please add embankment elevations in Table 9 of Attachment I.1 of the LAR.

Table 9 of Attachment I.1, Pond Outlets Specified for Hydrologic Modeling, shows the crest elevations of auxiliary spillways for Ponds 1 through 4. The embankment top elevations of those ponds are not described. These unknown elevations need to be included so that the staff can compare the pond embankment elevations with maximum pond levels for a PMP event to ensure that overtopping flows would not appear in hydrologic simulations. NUREG-1620, Section 3.2.3 directs the staff to verify that model input parameters are accurate.

This information is required for the NRC staff to determine whether 10 CFR Part 40 Appendix A, Criteria 1, 4(a), 6(1) and 12 are met.

RESPONSE: *This response was provided with the first submittal of responses to RAI Group 2, submitted to the NRC on October 14, 2019.*

RAI 4.3-1 Water Surface Profiles, Channel Velocities, and Shear Stresses

In Attachment G.7, Tables 5 and 7, please explain how the term 'dh' is calculated. Alternatively, please provide a copy of these tables in a format such that the NRC staff can verify the equations used in the calculation. The NRC staff was not able to locate an explanation or source for this number.

NUREG-1620, Section 3.2.3 directs the staff to verify that model input parameters are accurate. Tables 5 and 7 in Attachment G are used in the calculation of the

shear stresses for the design of the admixture of the final cover system. During its review, the NRC staff was not able to verify how this number was calculated.

This information is required for the NRC staff to determine whether 10 CFR Part 40 Appendix A, Criteria 1, 4(a), 6(1) and 12 are met.

RESPONSE: *This response was provided with the first submittal of responses to RAI Group 2, submitted to the NRC on October 14, 2019.*

RAI 4.3-2 Water Surface Profiles, Channel Velocities, and Shear Stresses

This is related to the hydraulic jump length in the sunken basin at the bottom of the riprap chute and has two parts (see item a and b below). Please either provide a justification for the licensee's calculated hydraulic jump length or provide corrected hydraulic jump lengths indicating that the hydraulic jump lengths of PMF and other floods (e.g. 200-yr and 1000-yr floods) are controlled within the sunken basin. Additionally, please either provide velocity distributions or warrant the submerged hydraulic jump within the sunken basin under various tailwater conditions to indicate that the submerged hydraulic jump condition is always in low flow velocity condition without riprap rock protection for the sunken basin.

NUREG-1620, review procedure (4) in SRP section 3.4.2 directs the staff to evaluate the outlet areas of channels to verify that the discharge area is adequately protected. In Section I.7.3 of Appendix I, the licensee stated, *"The sunken riprap basin is designed at the toe of the chute. The basin has a depth of 2 feet and a length of about 100 feet. The hydraulic modeling shows that the hydraulic jump on the chute will be a submerged jump and controlled by the downstream constriction (see Attachment I.7). Therefore, the jump length will not be influenced by the outlet basin length. To account for potential changes in downstream conditions, the length of the outlet basin was designed by assuming that a free jump would form at the toe of the chute and have a length of six times the sequent flow depth (Chow, 1959) for the PMF, approximately 15 feet."*

- a) The licensee calculated hydraulic jump length based on a free jump, which is six times the sequent flow depth. NRC staff independently calculated the hydraulic jump length and determined the length was 120 feet. The licensee's calculated short hydraulic jump length may be incorrect and not provide enough design length (100 feet) for the sunken basin. Please correct the 100 feet of the basin length shown on Design Drawing 09-11 that should not include the sloping riprap chute length. The Design Drawing 9-11 shows that the riprap rock protection length of outlet apron of the basin is 50 ft and the basin length is 65 feet. Please justify or correct the licensee's computed hydraulic jump length to be confined within the design length (65 ft) of the basin plus the outlet apron length (50 ft).
- b) The tailwater at the downstream location can affect the hydraulic jump location and length. Revise or provide additional information or analysis showing that the sunken basin length is sufficient to cover the lengths of hydraulic jump due to lower flows other than the PMF. The licensee may check other flows less than PMF with multiple tailwater conditions, not only a PMF condition. The licensee's design should encompass different hydraulic jump lengths in low flow conditions that are expected and

controlled within the licensee's property boundary and the sunken basin.

This information is required for NRC staff to determine if the requirements in 10 CFR Part 40, Appendix A, Criteria 1, 6(1), and 12 are met.

RESPONSE: *In design drawings 9-09, 9-10, and 9-11, Stantec extended the apron length to the riprap basin to 380 feet. This is sufficient to provide erosion protection beyond the length of the hydraulic jump. The revised drawings are included as Attachment 3 to this submittal.*

RAI 4.3-3 Water Surface Profiles, Channel Velocities, and Shear Stresses

This RAI is related to the riprap chute design and has three parts.

Please either provide a justification as to why the significant variations of the depth-averaged flow velocity at the cross-section A-A exist in a uniform flow depth or provide changes to the modeling result with the corrected input parameters where applicable.

Please either provide a justification as to why the maximum flow velocity of 27 ft/sec is located near the west bank and not near the centerline of the channel or provide changes to the corrected maximum flow velocity and the relevant modeling parameters where applicable.

Please provide a sediment transport calculation to justify the sediment transport in the design channel of the Pipeline Arroyo between the upstream and downstream of the sunken basin limit to be in a natural balance regime. Please provide information to demonstrate that the design of the downstream channel at the sunken basin outlet can convey the sediment without a sediment deposition to migrate the channel alignment.

In Figure 2 of Attachment I.7, the licensee indicated a maximum depth-averaged flow velocity of 27 ft/sec near the west bank. In Figure 3, the licensee showed that the velocities varied from 27 ft/s to 5 ft/sec within a uniform flow depth of approximately 6 feet. The staff has the following questions about these hydraulic modeling results:

- a) Figure 3 shows velocities in a trapezoid channel at cross-section A-A. The staff asks if the significant velocity change (27 ft/sec to 5 ft/sec) at the cross-section A-A of a straight channel is physically reasonable. The staff expects the prismatic channel cross section A-A should produce uniform velocity distribution. Please provide the licensee's rationale and technical basis for the significant velocity change in the cross-section A-A.
- b) The licensee did not provide support for having the maximum velocity (27 ft/sec) near the west bank (see Figure 2). In general, a curved channel has a maximum velocity near the outer bank, but the licensee's design channel is not a curved. Please provide additional information to support the model results.
- c) The sediment transport between the inlet and outlet of the sunken basin should be in balance after the new rock chute is installed in the Pipeline Arroyo or the accumulated sediment could create sand bars to block the narrow stream flow outlet if the sediment transport in the channel is not

designed to meet a natural regime. Without calculating the proposed sediment transport, the license cannot have an estimated sediment deposit in and downstream of the sunken basin. The sediment may accumulate in the downstream riprap rock channel after a hydraulic jump in the sunken basin.

This information is required for NRC staff to determine if the requirements in 10 CFR Part 40, Appendix A, Criteria 1, 6(1), and 12 are met.

RESPONSE: *Response to Comment A and Comment B*

Figure 3 of Attachment I.7 shows velocities at cross-section A-A range from about 27 to 5 feet per second. Although a straight, prismatic channel would be expected to have a more uniform velocity distribution across the section in which the velocity peak occurs at the center of the section, this riprap chute is not a straight, prismatic channel because the cross-sectional area is contracting along the left (southern) bank as flow moves down the chute as shown in Figure 1 of Attachment I.7. In this asymmetric contraction of flow, the velocity is expected to be greatest along the right (northern) side of the channel where flows have the streamline of least resistance and the velocity would be expected to stagnate along streamlines where the flow is obstructed. This asymmetry in the geometry was the reason that the 3-dimensional Computational Fluid Dynamics (Flow3D) model was used to model this structure.

Response to Comment C

Stantec evaluated the sediment transport capacity upstream and downstream of the riprap chute and basin using the same methods and equations in Attachment I.4 of Appendix I, where the flow depth and shear stress are calculated based on the Manning's Equation for the 5-year and 10-year design discharges. The upstream and downstream sections evaluated are shown in Figure 4.3-3a.

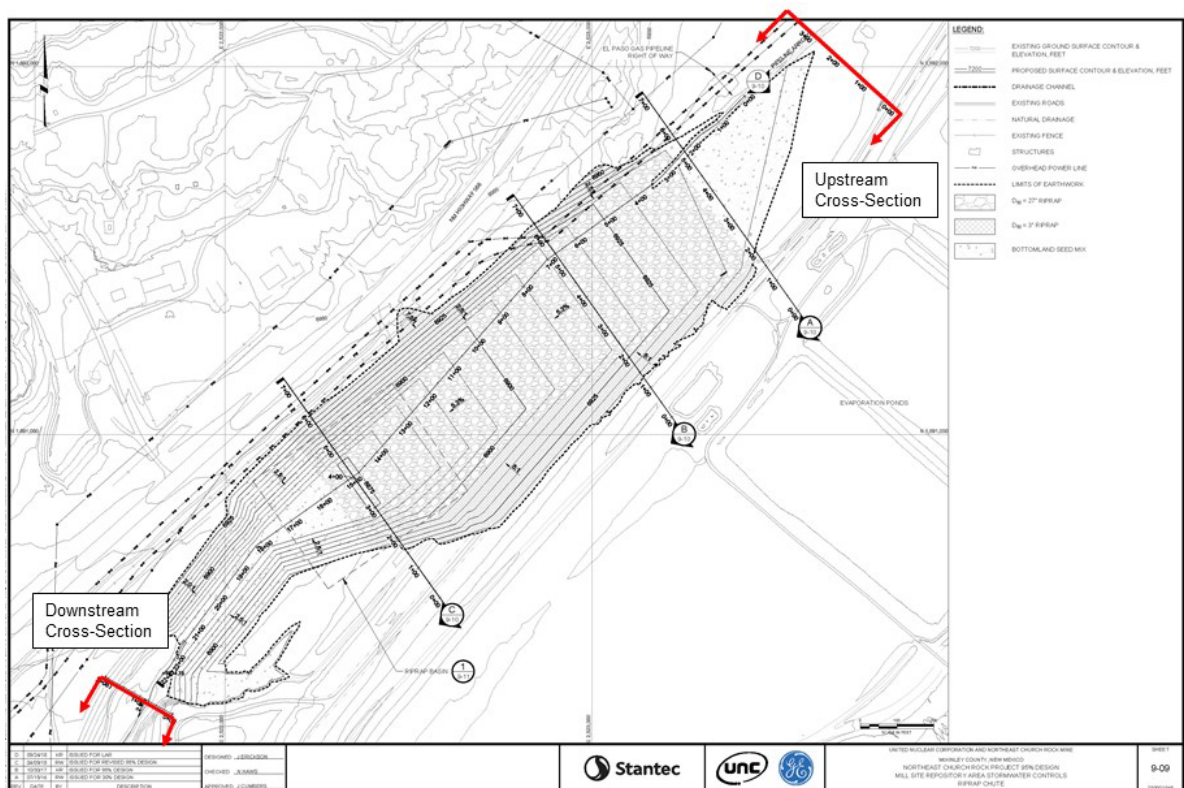


Figure 4.3-3a: Upstream and Downstream Cross-Section Locations

Table 4.3-3a shows and Figure 4.3-3b illustrates the results for bed shear stress .

Table 4.3-3a: Bed Shear Stress Analysis Upstream and Downstream of Rock Chute

Return Period	5-Year		10-Year	
Location	Upstream	Downstream	Upstream	Downstream
Discharge	297.8		1137.2	
Manning's Roughness	0.04	0.04	0.04	0.04
Depth (ft)	4.1	3.3	7.4	6.2
Slope (ft/ft)	0.004	0.017	0.004	0.017
Shear Stress (lbs/ft ²)	1.0	3.5	1.8	6.5

Figure 4.3-3b shows the upstream and downstream water surfaces along the sections for the 5- and 10- year return periods. The results show that the expected shear stresses for the 5-year and 10-year storm are greater downstream of the chute than upstream of the chute and sediment transport capacity downstream of the chute is also greater than upstream of the chute. Therefore, sedimentation is not expected on the downstream side of the riprap chute.

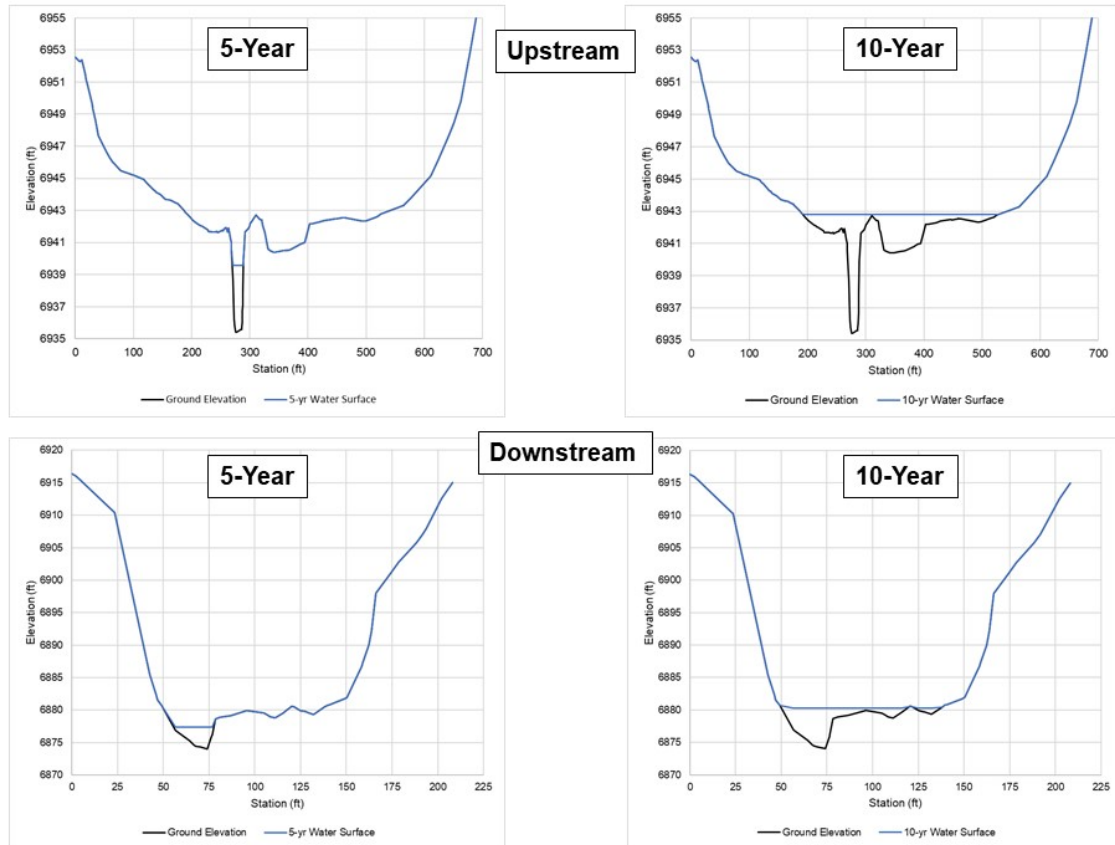


Figure 4.3-3b: Cross-Section Results for 10-Year and 5-Year Design Discharges

RAI 4.4-1 Design of Erosion Protection

Please either provide a justification as to why the riprap rock protection was not designed for an extension near the downstream narrow channel or provide the extension of the riprap rock zone at the downstream narrow channel between Stations 15+80 and 21+00 shown on the Design Drawing 9-09 of Volume II. Please either provide the design flow velocity at the constriction flow area at the end of sunken riprap basin or provide riprap rock layers for erosion protection. Although Figure 3 of Attachment I.7 shows depth-averaged velocity distribution of Flow-3D modeling results, please provide the similar figures for the constriction flow area at the downstream channel near the outlet of sunken basin, (Stations 16+00 and 22+00). Figure 1 of Attachment I.7 of Appendix I shows the plan view of riprap chute. Design Drawings 9-09, 9-10, and 9-11 of Volume II show details for the riprap chute. This is related to the riprap chute design. Please provide technical documentation supporting the licensee's assumption using 12-inch roughness height for the channel surface to simulate flows in the Flow-3D model.

Lack of scour protection design is observed in the downstream channel at the sunken riprap basin outlet (Approximately at Station 15+80, Design Drawing 9-10 of Volume II).

The contraction flow at the constriction section (Station 18+00, Design Drawing 9-09 of Volume II) near the end of the riprap chute can create concentration forces

that cause erosion and scouring on the downstream narrow stream banks. The NRC staff observes that the recommended flow velocity for a vegetated channel in NUREG-1623 is 2.5 to 3 ft/sec maximum. NUREG-1620, review procedure (4) in SRP section 3.4.2 directs the staff to evaluate the outlet areas of channels to verify that the discharge area is adequately protected.

This information is required for NRC staff to determine if the requirements in 10 CFR Part 40, Appendix A, Criteria 1, 6(1), and 12 are met.

RESPONSE: *Stantec updated the design drawings (9-09, 9-10, and 9-11) to extend the riprap layers downstream of the channel constriction to station 19+00. The revised drawings are included as Attachment 3 to this submittal. At this point, grading of the riprap chute ties into the existing Pipeline Arroyo channel.*

The 12-inch roughness height assumed in the Flow3D hydraulic model was chosen as a reasonable representation of the portion of the D_{50} = 27-inch riprap armoring that might protrude into the flow field and contribute to the channel roughness. The roughness height specifies a boundary roughness for the boundary layer assumptions at the channel bed in the model, and does not significantly affect the greater depth-averaged results shown in Attachment I.7 of Attachment I.

RAI 4.4-2 Design of Erosion Protection

Please evaluate the sediment transport capacity of the channels around the mine waste repository or justify why sedimentation of the channels is not expected to impact transport.

The NRC staff observes that sediment transport of the east repository channel is addressed in Attachment I.4 of the LAR. However, only a brief mention of the potential sedimentation in the North diversion channel is made in Attachment I.5 and it does not appear that potential sedimentation was considered for other drainage features on or adjacent to the mine waste repository. NUREG-1620, review procedure (4) in SRP section 3.4.2 directs the staff to consider potential sedimentation in drainage features.

This information is required for NRC staff to determine if the requirements in 10 CFR Part 40, Appendix A, Criteria 1, 6(1), and 12 are met.

RESPONSE: *Stantec provided a supplement to Attachment I.5 of Appendix I to evaluate (in accordance with methods presented in NUREG-1623, Appendix E) whether the North Diversion Channel has capacity for the PMF with 1,000 years of sediment accumulation in the channel. The supplement shows that the North Diversion Channel will have capacity with 1,000 years of channel sedimentation. Attachment I.5 is included as Attachment 4 to this submittal.*

RAI 4.4-3 Design of Erosion Protection

Please demonstrate that the lack of a riprap apron where the mine waste cover system meets the existing ground surface will not result in damage to the cover system. Alternatively, the design could be modified to include a riprap apron. The NRC staff's request should be considered for where the 2 percent, 5 percent, and

20 percent slopes meet the existing ground surface.

During its review of the engineering drawings and calculations in Attachment I, the NRC staff was not able to identify the presence of a riprap apron where the cover system over the mine waste repository meets the existing ground surface. The SRP directs the NRC staff to verify that the design follows the guidance that is available in Appendix D of NUREG 1623. The NRC staff observes that NUREG-1623 discusses riprap sizing at the toe of embankment slopes to minimize the potential for damage to the cover system. NUREG-1623 contains recommendations on the size of the rock that should be considered in a riprap apron, as well as the lateral distance the apron should extend from the toe of the slope.

This information is required for the NRC staff to determine if the regulations in 10 CFR Part 40, Appendix A, Criteria 1, 4(c), 4(d), 6(1), and 12 are met.

RESPONSE: *This response was provided with the first submittal of responses to RAI Group 2, submitted to the NRC on October 14, 2019.*

RAI 4.4-4 Design of Erosion Protection

Please revise the LAR to include the results of a petrographic evaluation of the basalt rock considered as a potential rock source. Additionally, please describe the experience and qualifications of the individual who performed the petrographic analysis.

During its review of the rock durability results in Attachment I.8 of the LAR, the NRC staff observed that a petrographic analysis was performed for the Tampico Pit limestone and the Page pit granite. However, the NRC staff was not able to locate the results of petrographic analysis for the basalt rock source. Additionally, the LAR does not appear to describe the background, qualifications, or experience of the individual who performed the petrographic analysis for all of the rock durability test results. The guidance in NUREG-1623, Appendix D suggests that a petrographic analysis should be performed for all potential rock sources and that the evaluation should be performed by a geologist or engineer experienced in this type of analysis.

This information is required for the NRC staff to determine if the regulations in 10 CFR Part 40, Appendix A, Criterion 1, Criterion 4(c), Criterion 4(d), Criterion 4(f), Criterion 6(1), and Criterion 12 are met.

RESPONSE: *This response was provided with the first submittal of responses to RAI Group 2, submitted to the NRC on October 14, 2019.*

RAI 4.4-5 Design of Erosion Protection

Please revise the technical specifications included with the LAR to include: (1) a methodology and testing frequency for gradation of the riprap and cover soils; and (2) a methodology and testing frequency for layer thickness testing. Alternatively, please describe to the NRC staff where or how the existing technical specifications address these issues.

During its review of the proposed technical specifications included in Appendix J of the LAR (specifically specification 02200 for earthwork and 02273 for riprap), the NRC staff was not able to identify the specifications for the gradation for the materials used in the cover system and riprap used in the channel linings and Pipeline Arroyo. Additionally, the NRC staff was not able to locate where the specifications addressed verification of the in-place thicknesses of the cover system soils or the rip rap placed in channel linings around the mine waste repository (and Pipeline Arroyo). The review procedures in Section 3.4.2 of the SRP direct the NRC staff to consider construction considerations of the proposed activities. Without this information, the NRC staff is unable to verify that the licensee will be able to construct the mine waste repository in a manner that is consistent with the proposed design.

This information is required for the NRC staff to determine if the regulations in 10 CFR Part 40, Appendix A, Criterion 1, Criterion 4(c), Criterion 4(d), Criterion 4(f), Criterion 6(1), and Criterion 12 are met.

RESPONSE: *This response was provided with the first submittal of responses to RAI Group 2, submitted to the NRC on October 14, 2019.*

RAI 4.5-1 Design of Erosion Protection Covers

Please either clarify that the analyses related to erosion control in the Attachments G.7, G.8, I.1 (for the mill site post-RA conditions), I.2, I.3, I.4, I.5 are based on the cover and associated drainage features for the mine waste repository in an optimal condition or whether the analyses reflect a degraded scenario. The NRC staff recognizes that a degraded scenario could occur either when no vegetation is present on the cover system, potentially leading to higher peak flows; or when vegetation is present in the repository drainage channels, potentially leading to decreased flow capacity. Alternatively, revise the LAR to include an analysis of the erosion control aspects of the cover system that reflect potential changes.

In reviewing the calculations in Attachments G and I of Appendices G and H of the LAR, it appears that the licensee has only considered a situation where the cover is functioning as intended. However, Section 3.5.2 of the SRP provides that the NRC staff evaluate the shear stresses and permissible flow velocities over the cover with potential changes that could occur in the long term. Examples of this would include: lack of vegetation; vegetation succession; or general cover degradation. The NRC staff understands that the licensee has designed the mine waste repository to not require active maintenance. The NRC staff observes that the lack of vegetation on the cover system could result in significantly higher peak flows over the cover system and in the drainage features surrounding the mine waste repository than would otherwise occur assuming normal cover performance.

This information is required for the NRC staff to determine if the regulations in 10 CFR Part 40, Appendix A, Criterion 1, Criterion 4(b), Criterion 4(c), Criterion 6(1), and Criterion 12 are met.

RESPONSE: *The responses to this RAI regarding cover erosion control analyses in Attachments G.7 and G.8 were provided with the first submittal of responses to RAI Group 2, submitted to the NRC on October 14, 2019. The response to this*

RAI regarding erosion control analyses in Attachments I.1 through I.5 is provided below.

Stantec evaluated the riprap armored Mill Site Repository Channels (detailed in Attachment I.2 and further discussed in Attachments I.3, and I.4) assuming no vegetation. If vegetation grew in the channels, the vegetation could reduce flow capacity in the channel. To evaluate channel capacity sensitivity to vegetation growth, Stantec increased the computed roughness values for all channels by 0.01 and reevaluated the channel capacity following procedures used previously (outlined in Attachment I.2). The adjusted roughness values are reported in Table 4.5-1a below along with the adjusted minimum channel freeboard for each riprap lined repository channel.

Table 4.5-1a: Vegetated Channel Roughness and Vegetated Channel Freeboard Values

Channel	Initial Manning's Roughness	Adjusted Manning's Roughness	Channel Freeboard (ft)
East Repository Channel STA 00+00 to 18+50 (Swale C - Existing)	0.029	0.039	0.2
East Repository Channel STA 18+50 to 28+30	0.033	0.043	0.4
East Repository Channel STA 28+30 to 34+60	0.039	0.049	0.5
East Repository Channel STA 34+60 to 41+39	0.039	0.049	0.4
Dilco Hill Channel A	0.037	0.047	0.6
Dilco Hill Channel B	0.037	0.047	0.5
Branch Swale H	0.033	0.043	0.6
Runoff Control Ditch	0.033	0.043	0.05

The information provided in Table 4.5-1a shows, even in a “degraded” condition with some vegetation growth through the riprap armoring, the channels will have sufficient capacity to convey the PMF without overtopping.

For the North Cell Drainage Channel, a vegetated channel, Stantec evaluated the worst-case soil condition identified in Attachment I.2 for a poor cover condition, where the cover condition coefficient is changed to 0.333 from the good cover condition coefficient of 1.0. Stantec evaluated the factor of safety for non-erosive conditions on the poor vegetation cover during the PMF in Table 4.5-1b.

Table 4.5-1b: North Cell Drainage Channel Vegetated Channel Analysis for Poor Cover Condition in PMF

Soil Parameters	Worst Case
Soil Classification (USCS):	SW
Plasticity Index, I _p :	2
Void Ratio, e:	0.45
D ₇₅ (inch):	0.01

Vegetation Parameters	
Vegetation Type:	blue grama
Minimum Stem Height (ft):	1
Cover Condition:	3
Stem Density, m (Stems/ft ²) :	Poor
C _i :	500
Solve Soil Parameters	
n _s :	0.0156
C _e :	-
T _{ab} (lb/ft ²):	-
T _a (lb/ft ²):	0.02
Solve Vegetative Parameters	
Adjusted Density, m (Stems/ft ²):	166.67
C _i (Minimum):	5.86
T _{va} (lb/ft ²):	4.40
Channel Hydraulics	
Bottom Width, B (ft) :	55
Minimum Channel Slope, S _{min} (ft/ft) :	0.003
Channel Roughness, n :	0.039
Flow Depth, Y (ft) :	4.11
Channel Velocity (fps) :	1.9
Effective Unit Discharge, q (ft ² /s) :	7.81
Results	
Effective Soil Stress (lb/ ft ²) :	0.02
Effective Vegetal Stress (lb/ ft ²) :	0.75
Soil Factor of Safety :	1.26
Vegetal Factor of Safety :	5.84

The analysis in Table 4.5-1b shows that, even when vegetation is poor in the North Cell Drainage Channel, the factor of safety remains above 5 for the North Cell Drainage Channel during the PMF.

Rehabilitation of the North Diversion Channel was already evaluated assuming the practical range of vegetated conditions (see Attachment I.5 - Tables 2 and 3).

The RAI 4.5-1 comments response previously submitted by Stantec on October 14, 2019 stated:

“An updated version of Appendix I will be provided with the second submittal of responses for the RAI Group 2. “

Since this evaluation did not result in a design change, UNC will not submit alterations to Appendix I.2, I.3, I.4, and I.5 considering the “degraded” conditions of the repository channels.

Section 5 - Protecting Water Resources

RAI 5.1 Protecting Water Resources

Please revise the application to include a groundwater monitoring program to detect additional contaminant seepage from the tailings as a result of the overlying weight of the mine spoils and compaction of the tailings.

The results of Consolidation and Groundwater Evaluation Report (Dwyer Engineering, 2018) concluded that the estimated amount of consolidation and reduction in porosity in the tailings due to added weight from placement of the mine spoils and ET Cover on the existing impoundment will not result in an increase in groundwater flux into the underlying groundwater from the tailings impoundment. The analysis, however, involved certain assumptions (e.g., constant permeability in the tailings, and time-invariant relationship between void ratio and effective stress among others) that were not fully supported in the LAR. The report also stated that any drainage from the tailings will be captured within the underlying alluvium, but no further detailed analysis was provided.

The staff notes that the water holding capacity of the unsaturated alluvium material below the tailings may also be reduced during consolidation due to the weight of mine spoils. In addition, the significance of capturing the drainage in the alluvium beneath the mill tailings material may be questionable because the alluvium is not consistently present beneath the mill tailings. For example, mill tailings located in the north and east of the North Cell were placed directly on the Zone 3 outcrop and Borrow Pit No. 2 was excavated into the Zone 1 subcrop (Canonie Environmental, 1987).

Other evidence of mill tailings seepage directly migrating into Zone 3 includes persistently low pH values observed in the groundwater just downgradient of North Cell due to lack of alluvial materials that have significant amount of acid-buffering capacity whereas Zone 3 itself has little acid-buffering capacity (Hatch Chester, 2019; Canonie Environmental, 1991). Given the large uncertainties and inconclusive aspects of the consolidation analysis with regards to assessing additional water flux and associated contaminant transport from the future impoundment to the groundwater, and given that the groundwater (with seepage from mill tailings) in Zone 3, for example, had historically followed different flow paths (Canonie Environmental, 1987), the current site groundwater monitoring program needs to be re-evaluated and modified if necessary to be able to verify impacts on the groundwater and to assess the performance of the ET Cover after mine spoil disposal and ET Cover completion.

The licensee could propose a groundwater monitoring program, including a monitoring well network (number of monitoring wells, well depths, and locations), and sampling schedule and monitoring parameters. The proposed groundwater monitoring program would account for the geologic and hydrogeologic features near the tailings impoundment. The geometry of mine spoils placement and the contacts with the alluvium materials and Gallup Sandstone may have significant influence on future groundwater flow and contaminant migration possibly to the SW Alluvium, Zone 1 or Zone 3 if release of additional groundwater from the mill tailings occurs.

UNC needs to evaluate and determine whether the current groundwater monitoring network for the mill tailings impoundment is adequate or needs to be modified in order to monitor the potential groundwater impact possibly resulting from the placement of mine spoils and ET Cover in the mill tailings impoundment.

This information is required for the NRC staff to determine if the regulations in 10 CFR Part 40, Appendix A, Criterion 7.

RESPONSE: *This response was provided with the first submittal of responses to RAI Group 2, submitted to the NRC on October 14, 2019.*

References

- 10 CFR Part 20. *Code of Federal Regulations*, Title 10, *Energy*, Part 20, “Standards for Protection Against Radiation.”
- 10 CFR Part 40. *Code of Federal Regulations*, Title 10, *Energy*, Part 40, “Domestic Licensing of Source Material,” U.S. Government Printing Office, Washington, DC.
- Baca, R. G. and S. O. Magnuson, 1990. Independent Verification and Benchmark Testing of the UNSAT-H Computer Code, Version 2.0, EGG-BEG-8811, EG&G.
- Bohnhoff, G., A. Ogorzalek, C. Benson, C. Shackelford, and P. Apiwantragoon, 2009. “Field data and water-balance predictions for a monolithic cover in a semiarid climate,” *Journal of Geotechnical and Geoenvironmental Engineering*, Vol. 135, No. 3, pp. 333–348.
- Canonie Environmental Services Corp. (Canonie). 1987. Reclamation Engineering Services: Geohydrologic Report Church Rock Site Gallup, New Mexico. May. [ML14168A065]
- Canonie Environmental, 1991. Tailings Reclamation Plan as Approved by NRC March 1, 1991 License No. SUS-1475, [ML103230316]
- Cedar Creek Associates. 2014. Vegetation Characterization and Biointrusion Surveys Church Rock Mill Site. July. [ML18267A334]
- Dwyer, S. F., 2003. Water Balance Measurements and Computer Simulations of Landfill Covers, Ph.D. Dissertation: Department of Civil Engineering, University of New Mexico, Albuquerque, New Mexico.
- Dwyer Engineering, LLC, 2018. Consolidation and groundwater evaluation Report, prepared for United Nuclear Corporation, 475 Creamery Way, Exton, PA 19341. [ML18267A276]
- Hargreaves, G. H. and Z. A. Samani, 1985. “Reference crop evapotranspiration from temperature,” *Applied Engineering in Agriculture*, Vol. 1, No. 2, pp. 96–99.
- Hatch Chester, 2019. Annual Review Report – 2018 – Groundwater Corrective Action, Church Rock site, Church Rock, New Mexico. [ML19037A415]
- Interstate Technology and Regulatory Council, Alternative Landfill Technologies Team (ITRC), 2003. Technical and Regulatory Guidance for Design, Installation, and Monitoring of Alternative Final Landfill Covers.
- Khire, M. V., C. H. Benson, and P. J. Bosscher, 1997. “Water Balance Modeling of Earthen Final Covers,” *Journal of Geotechnical and Geoenvironmental Engineering*, Vol. 123, No. 8, pp. 744–754.
- Khire, M. V., C. H. Benson, and P. J. Bosscher, 1999. “Field Data from a Capillary Barrier and Model Predictions with UNSAT-H,” *Journal of Geotechnical and Geoenvironmental Engineering*, Vol 125, No. 6, pp. 518–527.

- Lindeburg, M. (editor) 1989. Civil Engineering Reference Manual, 5th ed. Professional Publications, Belmont, CA.
- Magnuson, S. O., 1993. A Simulation Study of Moisture Movement in Proposed Barriers for the Subsurface Disposal Area, INEL, EGG-WM-10974, EG&G.
- Ogorzalek, A., G. Bohnhoff, C. Shackelford, C. Benson, and P. Apiwantragoon, 2008. "Comparison of field data and water-balance predictions for a capillary barrier cover," *Journal of Geotechnical and Geoenvironmental Engineering*, Vol. 134, No. 4, pp. 470–486.
- Ritchie, J. T. and E. Burnett, 1971. "Dryland Evaporative Flux in a Semi-Humid Climate, 2, Plant Influences," *Agronomy Journal*, Vol. 63, pp. 56–62.
- Roesler, A. C., C. H. Benson, and W. H. Albright, 2002. Field Hydrology and Model Predictions for Final Covers in the Alternative Cover Assessment Program-2002, University of Wisconsin-Madison Geo Engineering Report No. 02-08, September 20.
- Samani, Z. A. and M. Pessarakli, 1986. Estimating Potential Crop Evapotranspiration with Minimum Data in Arizona, *Transactions of the ASAE* Vol. 29, No. 2, pp. 522-524.
- Scanlon, B. R., M. Christman, R. C. Reedy, I. Porro, J. Simunek, and G. N. Flerchinger, 2002. "Intercode comparisons for simulating water balance of surficial sediments in semiarid regions," *Water Resources Research*, Vol. 38, No. 12, pp. 59-1–59-16.
- Scanlon, B. R., R. C. Reedy, K. Keese, and S. Dwyer, 2005. "Evaluation of evapotranspirative covers for waste containment in arid and semiarid regions in the southwestern US," *Vadose Zone Journal*, Vol. 4, pp. 55–71.
- UNC (United Nuclear Corporation), 1991. Tailings Reclamation Plan as Approved by NRC March 1, 1991 License No. SUA-1475. [ML103230255; ML103230287, ML103230306]. August.
- U.S. Department of Energy (DOE), 1989. Technical Approach Document, Revision II, UMTRADOE/AL 050425.0002, Uranium Mill Tailings Remedial Action Project, Albuquerque, New Mexico.
- U.S. Nuclear Regulatory Commission (NRC), 1989. Calculation of Radon Flux Attenuation by Earthen Uranium Mill Tailings Covers, Regulatory Guide 3.64.
- US Nuclear Regulatory Commission (NRC), 1997. Seismic Evaluation of Church Rock Tailings Impoundments, September 1997. [ML19198A003]
- US Nuclear Regulatory Commission (NRC), 2003. NUREG-1620, "Standard Review Plan for the Review of a Reclamation Plan for Mill Tailings Sites Under Title II of the Uranium Mill Tailings Radiation Control Act of 1978," June 2003. ADAMS Accession No. [ML032250190]
- US Nuclear Regulatory Commission (NRC), 2002. NUREG-1623, "Design of Erosion Protection for Long-Term Stabilization," September 2002. ADAMS Accession No. [ML022530043]