

Table 6-2
Utility Staff Levels

License Termination – 50.75(c) Utility Staff

Department	Decon Pd 1	Decon Pd 2	Decon Pd 3	Decon Pd 4	Decon Pd 5	Decon Pd 6
Decommissioning	0	21	21	25	18	0
Engineering	0	49	14	14	12	0
Maintenance and Work Control	0	38	10	10	3	0
Operations	0	15	7	7	0	0
Oversight and Nuclear Safety	0	7	2	2	1	0
Radiation Protection and Chemistry	0	27	26	31	26	0
Regulatory and Emergency Planning	0	10	4	4	4	0.5
Safety and Human Performance	0	13	7	7	7	0
Security Admin	0	6	6	6	6	0
Security Guard Force	0	12	12	12	12	0
Site Management and Administration	0	13	13	13	9	1
Period Totals	0	211	122	131	98	1.5

Spent Fuel - 50.54(bb) Utility Staff

Department	SNF Pd 1	SNF Pd 2	SNF Pd 3	SNF Pd 4	SNF Pd 5	SNF D&D Pd 1	SNF D&D Pd 2
Spent Fuel Shipping	0	0	0	2	2	0	0
Decommissioning	0	0	0	0	0	1	1
Engineering	0	1	1	1	1	0	1
Maintenance and Work Control	0	31	0	0	0	0	0
Operations	0	45	1	1	1	0	0
Oversight and Nuclear Safety	0	1	0.25	0.25	0.25	0	0
Radiation Protection and Chemistry	0	6	4	4	4	1	2
Regulatory and Emergency Planning	0	0	0	0	0	1	1
Security Admin	0	14	10	8	8	1	1
Security Guard Force	0	178	35	35	35	5	5
Site Management and Administration	0	0	0	0	0	1	1
Period Total	0	276	51.25	54.25	54.25	10	12

Site Restoration - Utility Staff

Department	SR Pd 1	SR Pd 2	SR Pd 3	SR Pd 4	SR Pd 5	SR Pd 6
Decommissioning	0	2	0	5	4	2
Engineering	0	1	0	2	1	0
Maintenance and Work Control	0	1	0	2	2	2
Regulatory and Emergency Planning	0	1	0	0	0	0
Safety and Human Performance	0	1	0	2	1	1
Security Admin	0	0	0	1	1	0
Security Guard Force	0	0	0	5	5	0
Site Management and Administration	0	0	0	4	3	3
Period Totals	0	6	0	21	17	8

Table 6-3
DGC Staff Levels

License Termination – 50.75(c) DGC Staff

Department	Decon Pd 3	Decon Pd 4	Decon Pd 5	Decon Pd 6
Administration	9	17	17	0
Engineering	15	29	14	0
Health Physics	16	73	73	2
Management	3	3	3	0
Quality Assurance	2	5	4	0
Waste Operations	7	16	16	0
Period Totals	52	143	127	2

Spent Fuel - 50.54(bb) - DGC Staff

Department	SNF D&D Pd 2
Administration	1
Engineering	2
Health Physics	3
Management	1
Quality Assurance	1
Waste Operations	4
Period Totals	12

Site Restoration DGC Staff

Department	SR Pd 1	SR Pd 2	SR Pd 3	SR Pd 4	SR Pd 5	SR Pd 6
Administration	0	0	0	10	5	4
Engineering	0	0	0	13	11	5
Health Physics	0	0	0	3	0	0
Management	0	0	0	2	2	1
Quality Assurance	0	0	0	2	1	0
Waste Operations	0	0	0	11	7	7
Period Totals	0	0	0	41	26	17

Table 6-4
Waste Disposal Volumes
(Cost Excludes Contingency - 2014 Dollars)

Facility and Waste Class	Waste Weight (LBs)	Waste Volume (CF)	Burial Volume (CF)	Packaging Cost	Transportation Cost	Base Burial Cost	Total Disposal Cost
Class B and C Facility							
Class B	1,132,323	6,696	15,199	\$1,199,186	\$6,433,599	\$72,635,570	\$80,268,355
Class C	407,380	1,546	8,191	\$2,064,309	\$26,706,007	\$39,142,870	\$67,913,186
GTCC	92,861	190	1,882	\$196,288	\$1,680,000	\$38,775,980	\$40,652,268
	1,632,564	8,431	25,272	\$3,459,782	\$34,819,606	\$150,554,420	\$188,833,808
EnergySolutions							
Class A – Debris	200,560,122	3,229,506	3,308,050	\$3,804,262	\$13,779,286	\$211,423,909	\$229,007,458
Class A – Oversize	9,967,521	146,943	184,730	\$187,314	\$784,285	\$22,669,947	\$23,641,545
Class A – Containerized Waste	1,053,914	12,287	16,303	\$397,152	\$364,322	\$4,112,378	\$4,873,851
Class A – Large Component	11,480,200	108,866	136,373	\$6,313,568	\$69,622,664	\$43,582,464	\$119,518,696
Class A – Mixed Waste	62,643	3,012	3,012	\$67,887	\$12,448	\$801,226	\$881,561
	223,124,400	3,500,614	3,648,469	\$10,770,182	\$84,563,005	\$282,589,924	\$377,923,111
Other							
Out of State Class III Landfill	1,909,207,440	25,212,269	29,372,422	\$0	\$146,326,469	\$43,929,750	\$190,256,219
Scrap Metal Recycler	184,787,372	377,117	7,391,495	\$0	\$911,926	\$0	\$911,926
	2,093,994,812	25,589,386	36,763,917	\$0	\$147,238,394	\$43,929,750	\$191,168,144
Grand Total	2,318,751,776	29,098,431	40,437,658	\$14,229,964	\$266,621,006	\$477,074,094	\$757,925,064

7.0 REFERENCES

1. U.S. Nuclear Regulatory Commission, "Domestic Licensing of Production and Utilization Facilities," 10 CFR Part 50, 2008, Available from <http://www.nrc.gov/reading-rm/doc-collections/cfr/part050/full-text.html>.
2. Atomic Industrial Forum, Inc., "Guidelines for Producing Commercial Nuclear Power Plant Decommissioning Cost Estimates," AIF/NESP-036, May 1986.
3. U.S. Nuclear Regulatory Commission, "Standard Format and Content of Decommissioning Cost Estimates for Nuclear Power Reactors," Regulatory Guide 1.202, February 2005.
4. Federal Register, Vol. 4, "Standard Contract for Disposal of Spent Nuclear Fuel and/or High-Level Radioactive Waste," NRC 10 CFR Part 961 (DOE), January 1, 1999.
5. U.S. Nuclear Regulatory Commission, "Technology, Safety and Costs of Decommissioning a Reference Pressurized Water Reactor Power Station," NUREG/CR-0130, June 1978.
6. U.S. Nuclear Regulatory Commission, "Technology, Safety and Costs of Decommissioning a Reference Boiling Water Reactor Power Station," NUREG/CR-0672, June 1980.
7. Life-of-Plant Disposal Agreement, between EnergySolutions, LLC and SCE effective January 1st, 2014.
8. U.S. Nuclear Regulatory Commission, "Multi-Agency Radiation Survey and Site Investigation Manual (MARSSIM)," NUREG-1575, Rev. 1, August 2000.
9. U.S. Department of Energy, "Cost Estimating Guide," DOE G 430.1-1, March 1997.
10. RS Means, "Labor Rates for the Construction Industry," 2014.
11. ABZ, Incorporated, "San Onofre Nuclear Generating Station Units 2 and 3 (SONGS 2/3)", December 14, 2012
12. U.S. Department of Energy, "Acceptance Priority Ranking & Annual Capacity Report," DOE/RW-0567, July 2004.
13. Pacific Gas & Electric, "Establishing an Appropriate Contingency Factor for Inclusion in the Decommissioning Revenue Requirements", April 2009
14. Department of the Navy, "Grant of Easement," May 1964.
15. State of California State Lands Commission, "Lease P.R.C. No. 4862.1", dated November 19, 1984

16. State of California, Executive Order D-62-02, September 2002
17. Southern California Edison, "Testimony On the Nuclear Decommissioning Of SONGS 2 & 3 And Palo Verde Before the Public Utilities Commission of the State of California," December 21, 2012.

Appendix A

List of Systems and Structures

SONGS Plant System and Structure List

Common

Type	System Name or Description
Non	Not Used
Struct	Administration Building (K-40/50)
Struct	AWS Building
Struct	Building L-50
Struct	Gunite Slope Protection
Struct	High Flow Make-Up Demineralizer Area
Struct	ISFSI Support Structures
Struct	Maintenance Building 1 (B-43/B-44)
Struct	Maintenance Building 2 (B-49/B-50)
Struct	Maintenance Building 4 (B-64/B-65)
Struct	Maintenance Building 5 (B-62/B-63)
Struct	Mesa Buildings
Struct	Not Used
Struct	Outage Control Center Building
Struct	REMS Staging Pad
Struct	Seawall - Units 2 & 3
Struct	Security Access Building (A-80, 81, 82)
Struct	Service Building (K-10, 20, 30)
Struct	South Security Processing Facility (K-70)
Struct	South Yard Facility Buildings (T-10, 20, 60 and Haz Mat.)
Struct	Staging Warehouse Building
Ess	Auxiliary Control Systems - Unit 2
Ess	Fuel Handling Building Systems - Unit 2
Ess	Radwaste Systems - Unit 2
Non	Condensate Storage Systems - Unit 2
Non	Containment Building Systems - Unit 2
Non	Diesel Generator Systems - Unit 2
Non	Full Flow Areas Systems - Unit 2
Non	Intake Systems - Unit 2
Non	Penetration Building Systems - Unit 2
Non	Safety Equipment Building Systems - Unit 2
Non	Turbine Bldg Equip to 9 ft - Unit 2
Struct	Condensate Storage Area - Unit 2
Struct	Containment Building - Unit 2
Struct	Control Building - Unit 2
Struct	Diesel Generator Building - Unit 2
Struct	Fuel Handling Building - Unit 2
Struct	Full Flow Building - Unit 2
Struct	Intake Structure - Unit 2
Struct	Penetration Building - Unit 2
Struct	Radwaste Building - Unit 2
Struct	Safety Equipment Building - Unit 2
Struct	Tunnels - Unit 2
Struct	Turbine Building - Unit 2
Ess	Auxiliary Control Systems - Unit 3
Ess	Fuel Handling Building Systems - Unit 3

SONGS Plant System and Structure List

Unit 3

Type	System Name or Description
Ess	Radwaste Systems - Unit 3
Non	Condensate Storage Systems - Unit 3
Non	Containment Building Systems - Unit 3
Non	Diesel Generator Systems - Unit 3
Non	Full Flow Areas Systems - Unit 3
Non	Intake Systems - Unit 3
Non	Penetration Building Systems - Unit 3
Non	Safety Equipment Building Systems - Unit 3
Non	Turbine Bldg Equip to 9 ft - Unit 3
Non	Turbine Generator to 63 ft - Unit 3
Struct	Condensate Storage Tank Area - Unit 3
Struct	Containment Building - Unit 3
Struct	Control Building - Unit 3
Struct	Diesel Generator Building - Unit 3
Struct	Fuel Handling Building - Unit 3
Struct	Full Flow Building - Unit 3
Struct	Intake Structure - Unit 3
Struct	Penetration Building - Unit 3
Struct	Radwaste Building - Unit 3
Struct	Safety Equipment Building - Unit 3
Struct	Tunnels - Unit 3
Struct	Turbine Building - Unit 3

Appendix B

Spent Fuel Shipping Schedule

**SONGS Unit 2 & Unit 3
Spent Fuel Shipping Schedule
2024 DOE Acceptance**

[illegible]

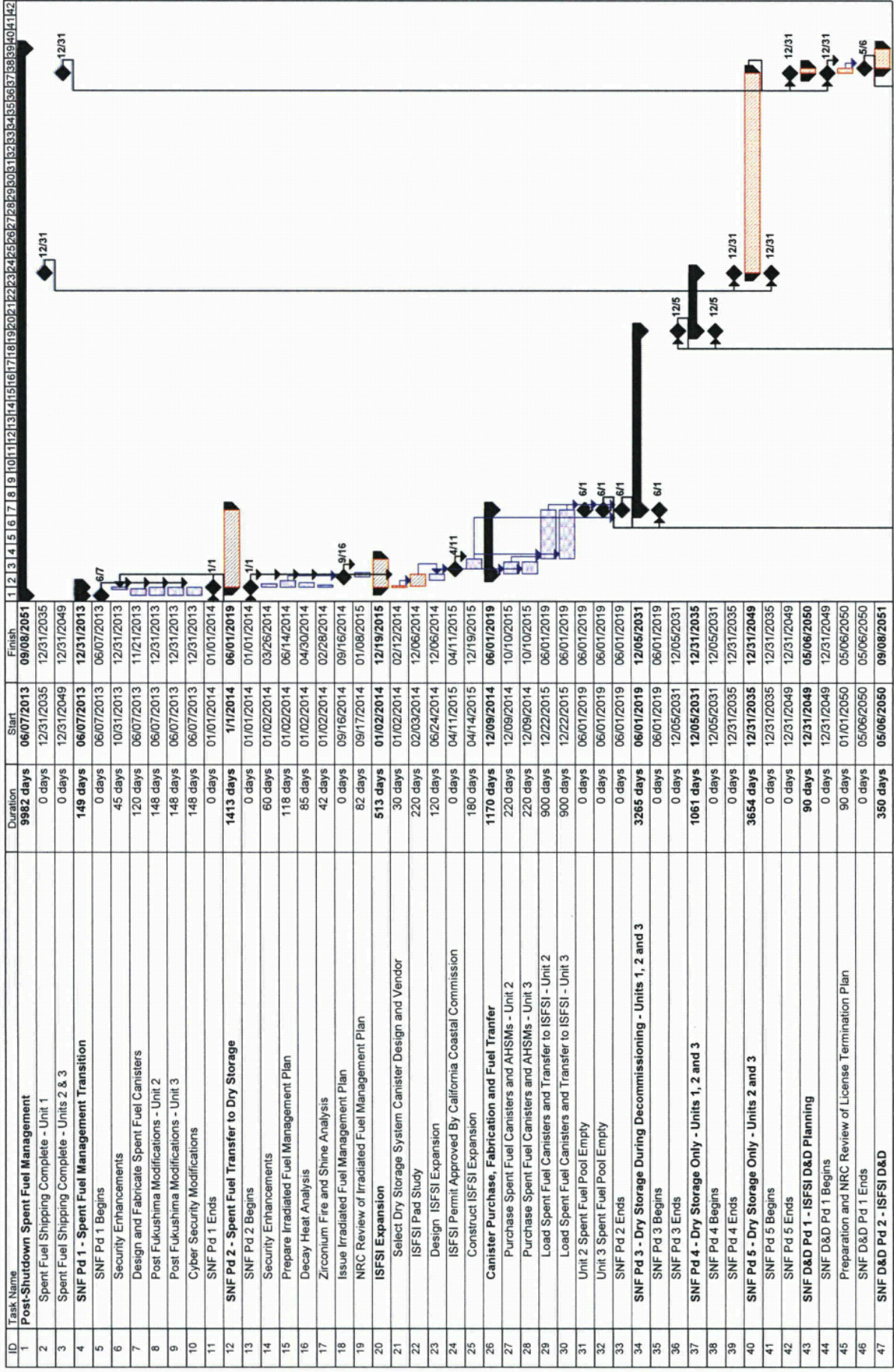
Appendix C

Detailed Project Schedule

SONGS 2 & 3

Detailed Project Schedule

Prompt DECON, DOE Repository Opens 2024



SONGS 2 & 3
Detailed Project Schedule
Prompt DECON, DOE Repository Opens 2024

