

NOT TO SCALE

(Rev. 12 1/03)

NOTE: NODES ARE AS SHOWN ON TABLE 12.2-1.



PERRY NUCLEAR POWER PLANT

Radiation Source Model

Figure 12.2-1

Removed in Accordance with RIS 2015-17

<p>PERRY NUCLEAR POWER PLANT 10 CENTER RD., PERRY, OHIO 44081</p>
<p>RADIATION ZONES, PLAN A ABOVE ELEVS. 568'-6", 574'-10", 577'-6" AND 580'-6" FIGURE 12.3-1 (DWG. E-013-0003-00000)</p>

Removed in Accordance with RIS 2015-17

PERRY NUCLEAR POWER PLANT
10 CENTER RD., PERRY, OHIO 44081

RADIATION ZONES, PLAN B ABOVE
ELEVS. 593'-6", 599'-0", 600'-6",
602'-6", AND 605'-6"

FIGURE 12.3-2
(DWG. E-013-0004-00000)

Removed in Accordance with RIS 2015–17

PERRY NUCLEAR POWER PLANT
10 CENTER RD., PERRY, OHIO 44081

RADIATION ZONES, PLAN C ABOVE
ELEVS. 620'-6", 623'-6" AND
624'-6"

FIGURE 12.3-3
(DWG. E-013-0005-00000)

Removed in Accordance with RIS 2015-17

PERRY NUCLEAR POWER PLANT
10 CENTER RD., PERRY, OHIO 44081

RADIATION ZONES, PLAN D
ABOVE ELEVS. 638'-6", 642'-0"
AND 647'-6"
FIGURE 12.3-4
(DWG. E-013-0006-00000)

Removed in Accordance with RIS 2015–17

PERRY NUCLEAR POWER PLANT
10 CENTER RD., PERRY, OHIO 44081

RADIATION ZONES, PLAN E ABOVE
ELEVS. 652'-0" AND EL. 654'-6",

FIGURE 12.3-5
(DWG. E-013-0007-00000)

Removed in Accordance with RIS 2015–17

PERRY NUCLEAR POWER PLANT
10 CENTER RD., PERRY, OHIO 44081

RADIATION ZONES, PLAN F ABOVE
ELEVS. 664'-7", 665'-0", AND
670'-6"

FIGURE 12.3-6
(DWG. E-013-0008-00000)

Removed in Accordance with RIS 2015-17

PERRY NUCLEAR POWER PLANT
10 CENTER RD., PERRY, OHIO 44081

RADIATION ZONE, PLAN G ABOVE
ELEVS. 689'-6"

FIGURE 12.3-7
(DWG. E-013-0009-00000)

Removed in Accordance with RIS 2015–17

PERRY NUCLEAR POWER PLANT
10 CENTER RD., PERRY, OHIO 44081

RADIATION ZONE,
PLAN H ROOF PLAN

FIGURE 12.3-8
(DWG. E-013-0010-00000)

Removed in Accordance with RIS 2015–17

PERRY NUCLEAR POWER PLANT
10 CENTER RD., PERRY, OHIO 44081

RADIATION ZONE,
SECTION A-A

FIGURE 12.3-9
(DWG. E-013-0011-00000)

Removed in Accordance with RIS 2015-17

PERRY NUCLEAR POWER PLANT
10 CENTER RD., PERRY, OHIO 44081

RADIATION ZONE,
SECTION B-B

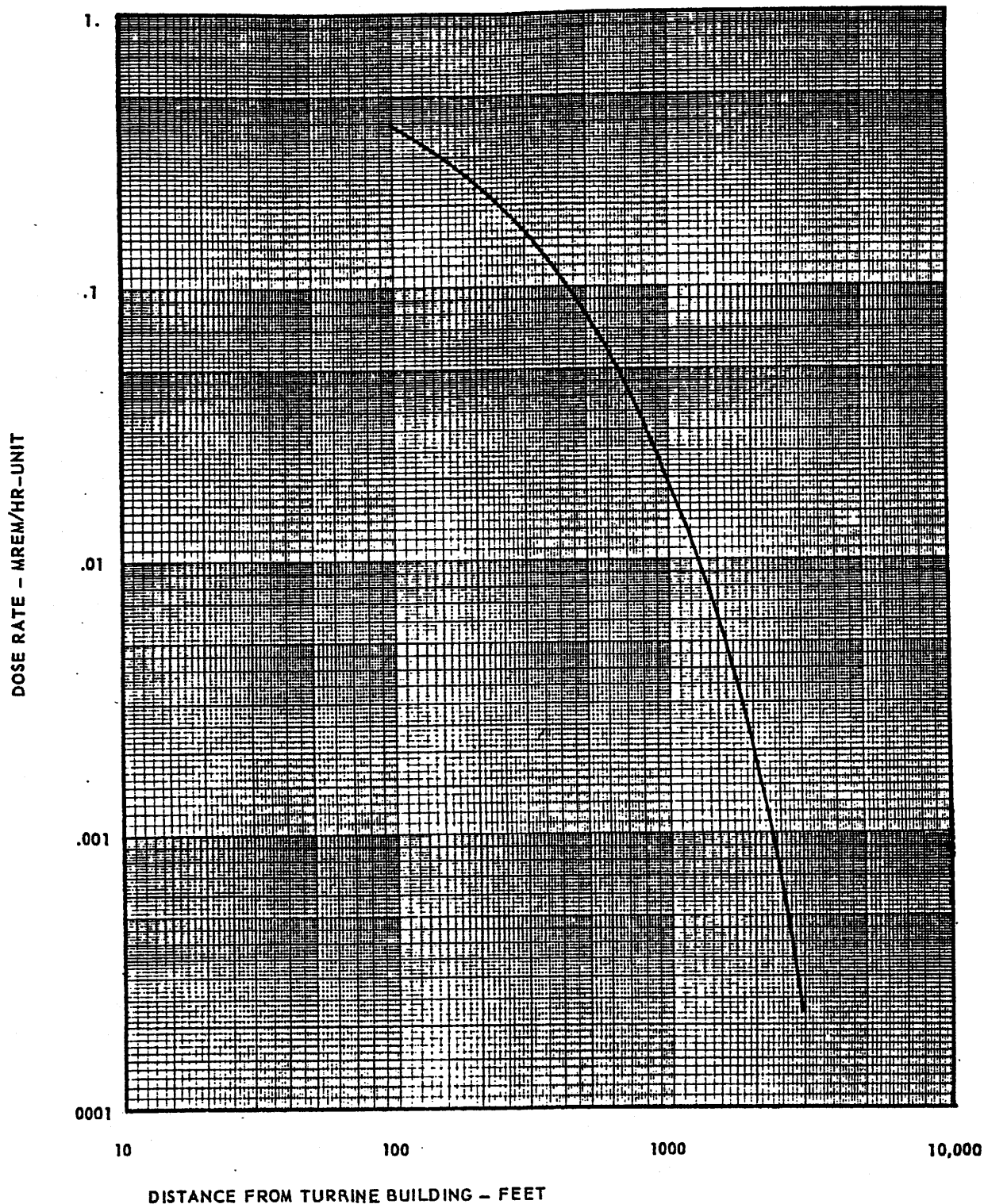
FIGURE 12.3-10
(DWG. E-013-0012-00000)

Removed in Accordance with RIS 2015-17

PERRY NUCLEAR POWER PLANT
10 CENTER RD., PERRY, OHIO 44081

RADIATION ZONE,
SECTION C-C

FIGURE 12.3-11
(DWG. E-013-0013-000000)



(Rev. 12 1/03)



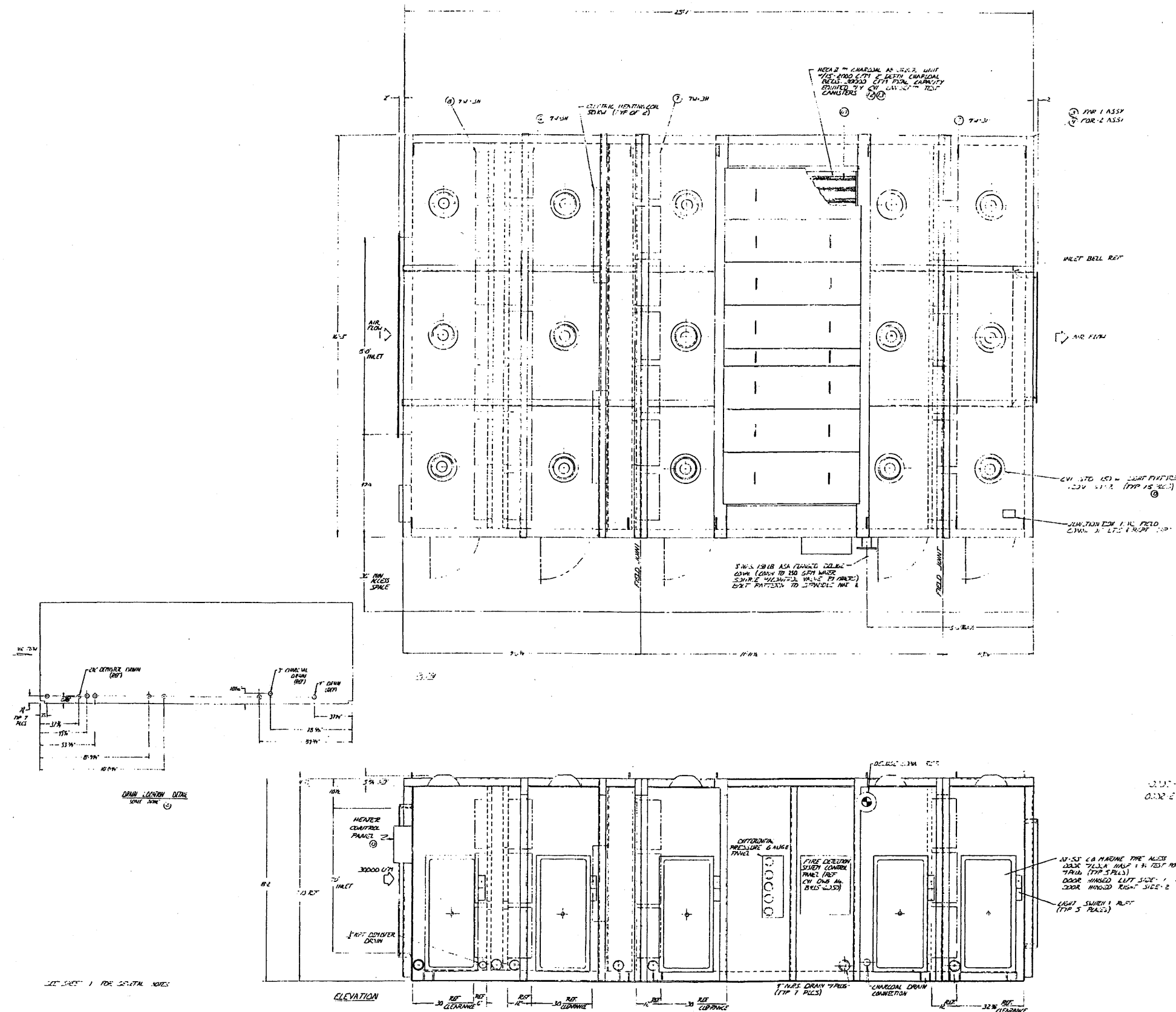
PERRY NUCLEAR POWER PLANT

Skyshine Dose Rate (mrem/hr)
vs. Distance (ft.)

Figure 12.3-12

REVISIONS					
CHK	DATE	BY	APP	REV	DESCRIPTION
R	12/12/12	EP	REV	1	REVISED TO 12/12/12
C	12/12/12	EP	REV	2	ADDED NEW 12/12/12
D	12/12/12	EP	REV	3	ADDED NEW 12/12/12

BILL OF MATERIAL			
ITEM	PART NUMBER	DESCRIPTION	MATERIAL



(Rev. 12 1/03)

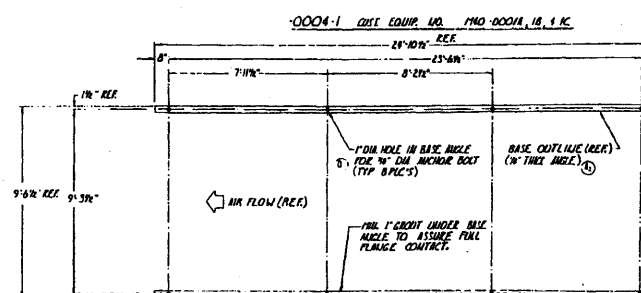
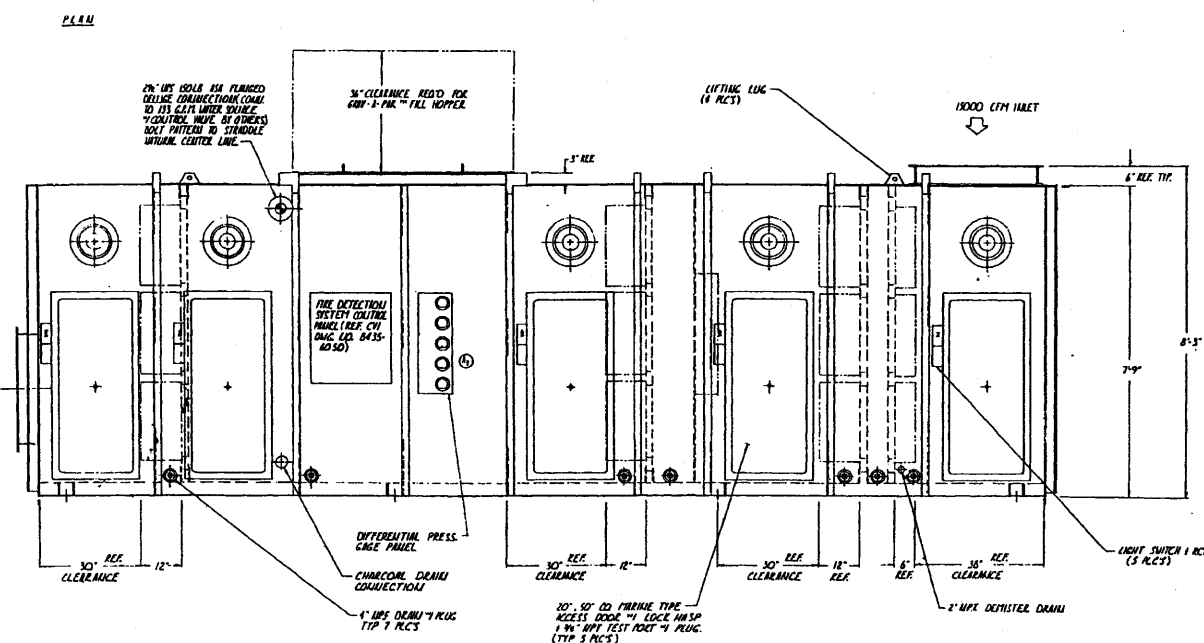
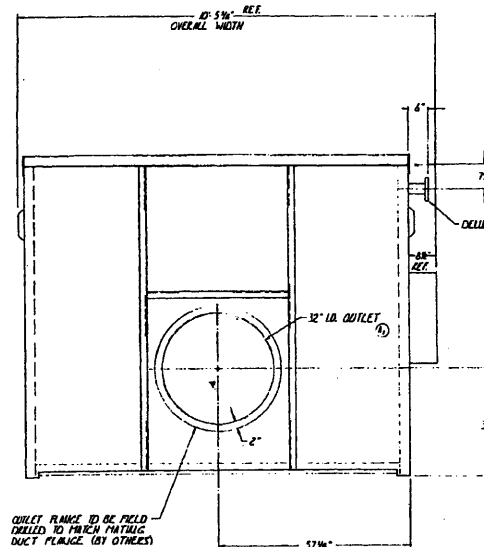
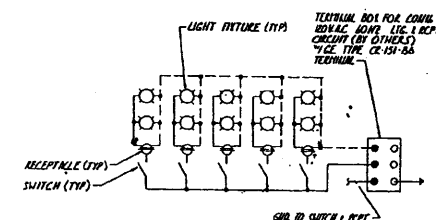
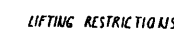
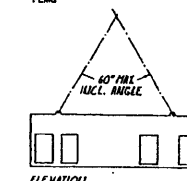
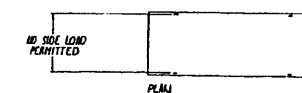
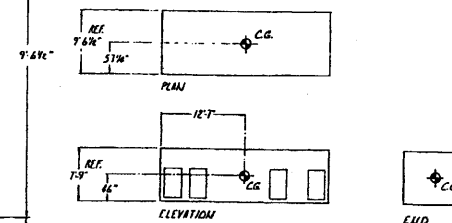
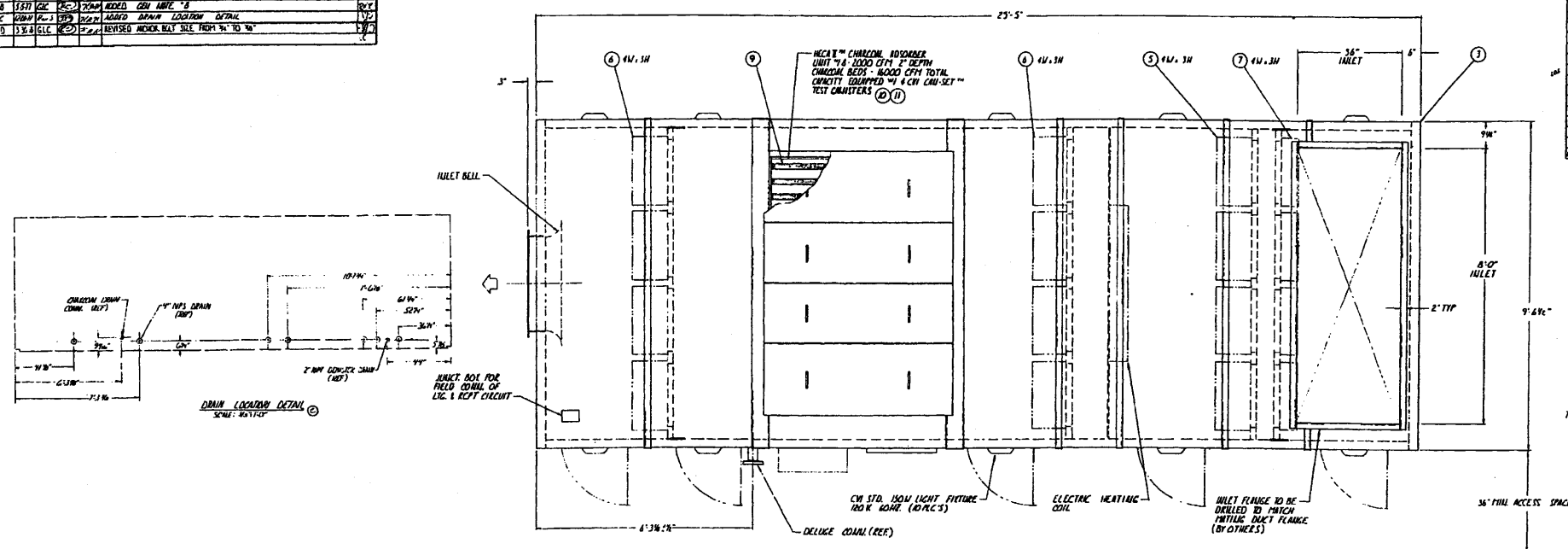
PERRY NUCLEAR POWER PLANT

General Arrangement - Control Room
 Emergency Recirculation Plenum

Figure 12.3-14 (Sheet 2 of 2)

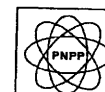
REVISIONS					DESCRIPTION	DATE
QTY	DATE	BY	CHKD	APPR		
1	1/17/92	W	W	J.P.P.	1 KEY OUTLET W/ 3/4" HIGH X ADDED NAIL THICKNESS	1/17/92
					1 KEY GAGE NAIL	1/17/92
8	5/31/92	W	W	W.M.	ADDED 2" X 4" S	5/31/92
2	5/31/92	W	W	W.M.	ADDED 2" X 4" L	5/31/92
9	5/31/92	W	W	W.M.	REVISED INDEX KEY SIZE FROM 1/4" TO 3/4"	5/31/92

AQ. 4020		48		BILL OF MATERIAL		
ITEM	PART NUMBER	QTY	DESCRIPTION	MATERIAL		
1	2435-2024-1	E	FUEL HANDLING AREA ERM. REPAIR			
2	21-2024-00175		REC-FILTER			
3	21-2024-00175		HEMT-FILTER			
4	90-0480-00043		DEP-MISTER			
5						
6	91-0031-00045		CHARGE			
7	90-0300-01425		CHARGE" CHARGER ASST			
8	90-0300-01425		BLANKING COVER			
9						
10						
11						
12						
13						
14						
15						



6. ANNUAL NET MATERIAL SHALL BE WITHIN 4-507 TO BE FURNISHED BY OTHERS
7. HOUSING TO BE PRINTED PER CYI SPEC. WA. 8145-23-1035 (EXCEPTION TO BE PERMITE COATED ONLY - FINISH PRINT BY OTHERS)
8. ITEM NO. 3, 6, 7, 9, 10, 11 TO BE SHIPPED SEPARATE FROM UNIT.
9. TOTAL OPERATING WTS 28000 LB. (EST) SHIPPING WTS 22000 LB. (EST)
10. SEE CYI 0117 MANUAL FOR INSTALLATION OF FILTERS & COMPONENTS.
11. HOUSING DESIGN PRESSURE -1PSIG TO +17PSIG
12. DESIGN AIR FLOW 5000 CFPM
13. CUSTOMER TO MAKE FINAL INSPECTION TO THIS DRAWING.

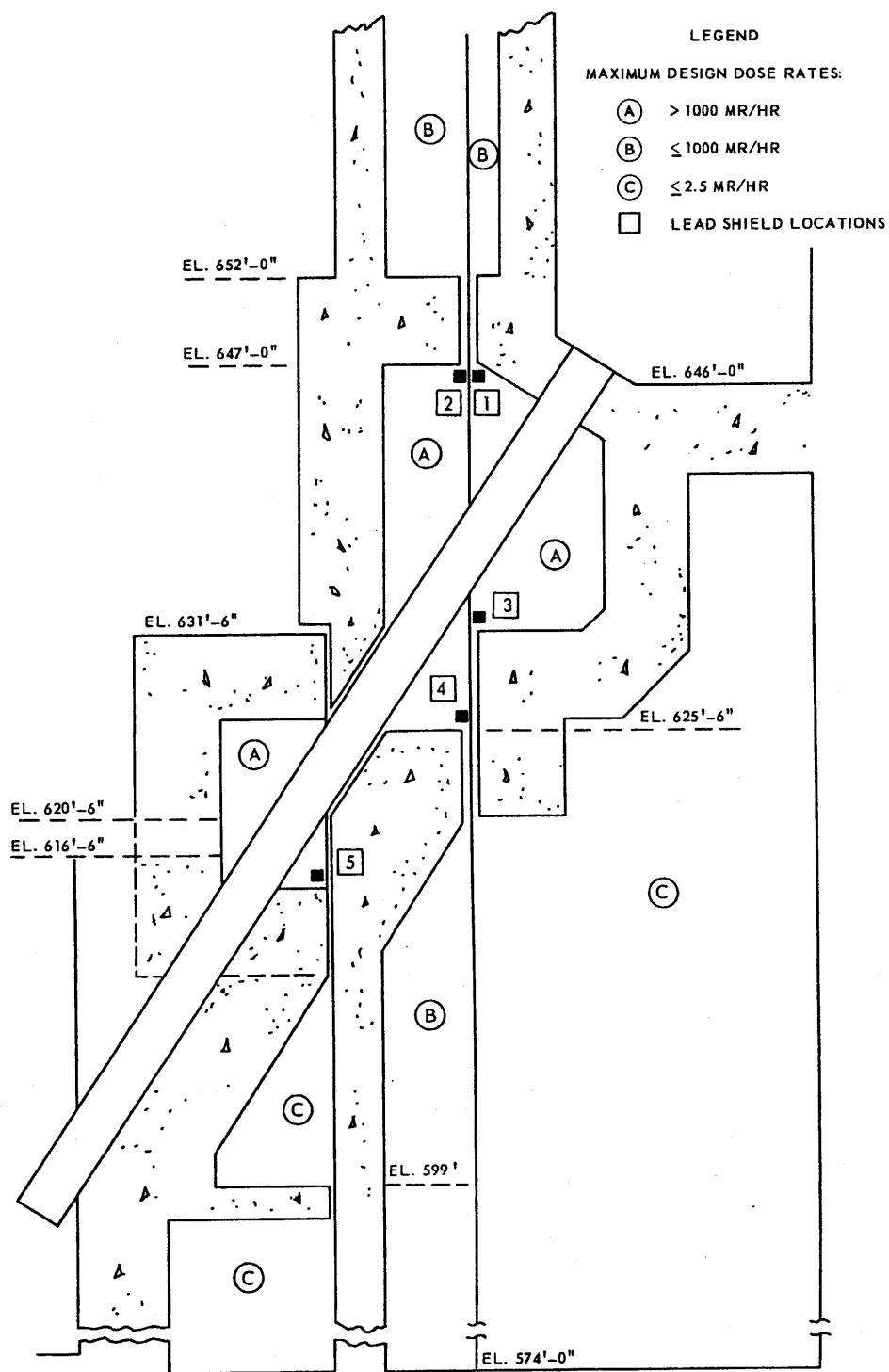
(Rev. 12 1/03)



PERRY NUCLEAR POWER PLANT

General Arrangement - Fuel
Handling Area Exhaust Plenum

Figure 12.3-16



(Rev. 12 1/03)



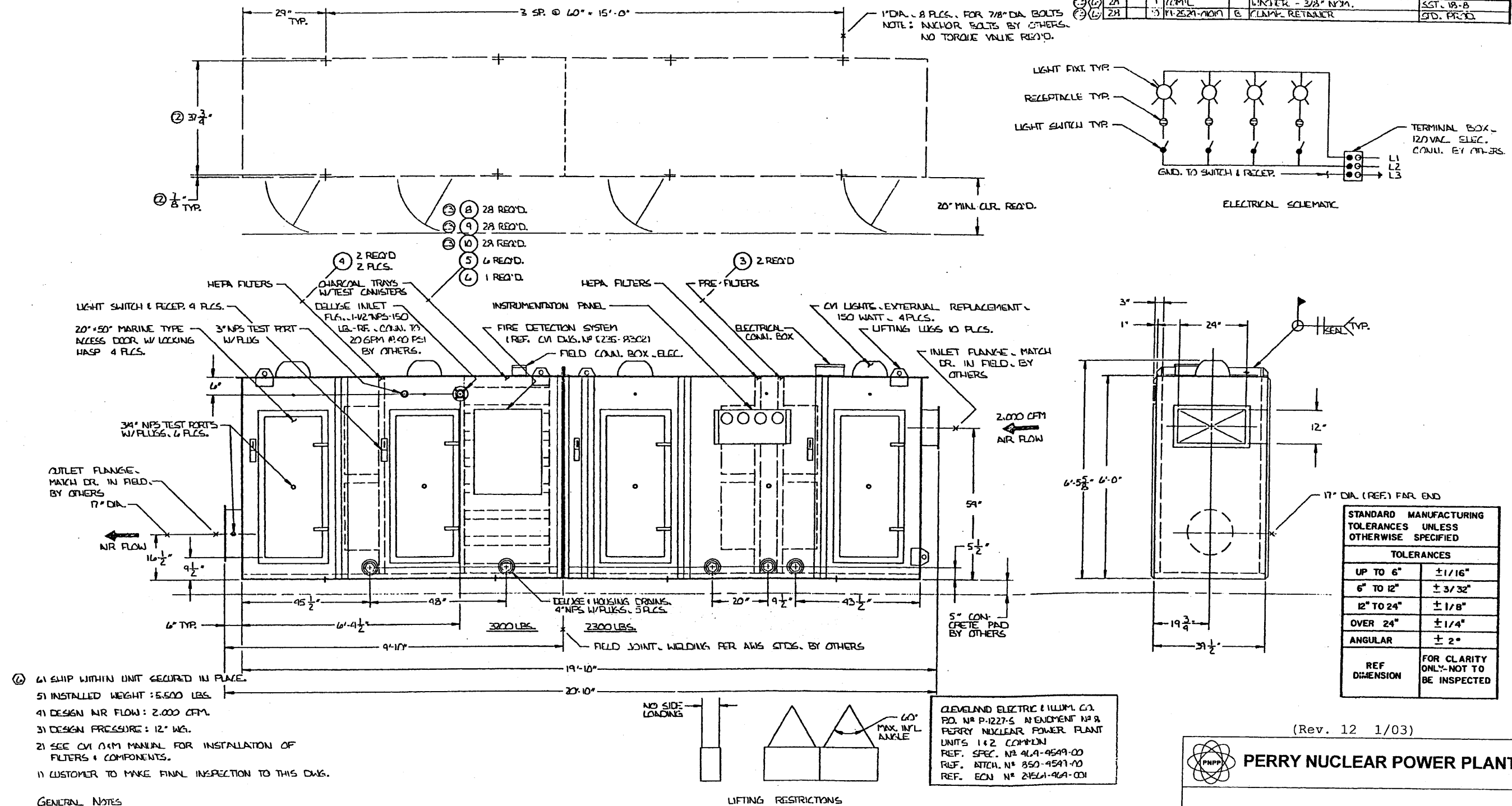
PERRY NUCLEAR POWER PLANT

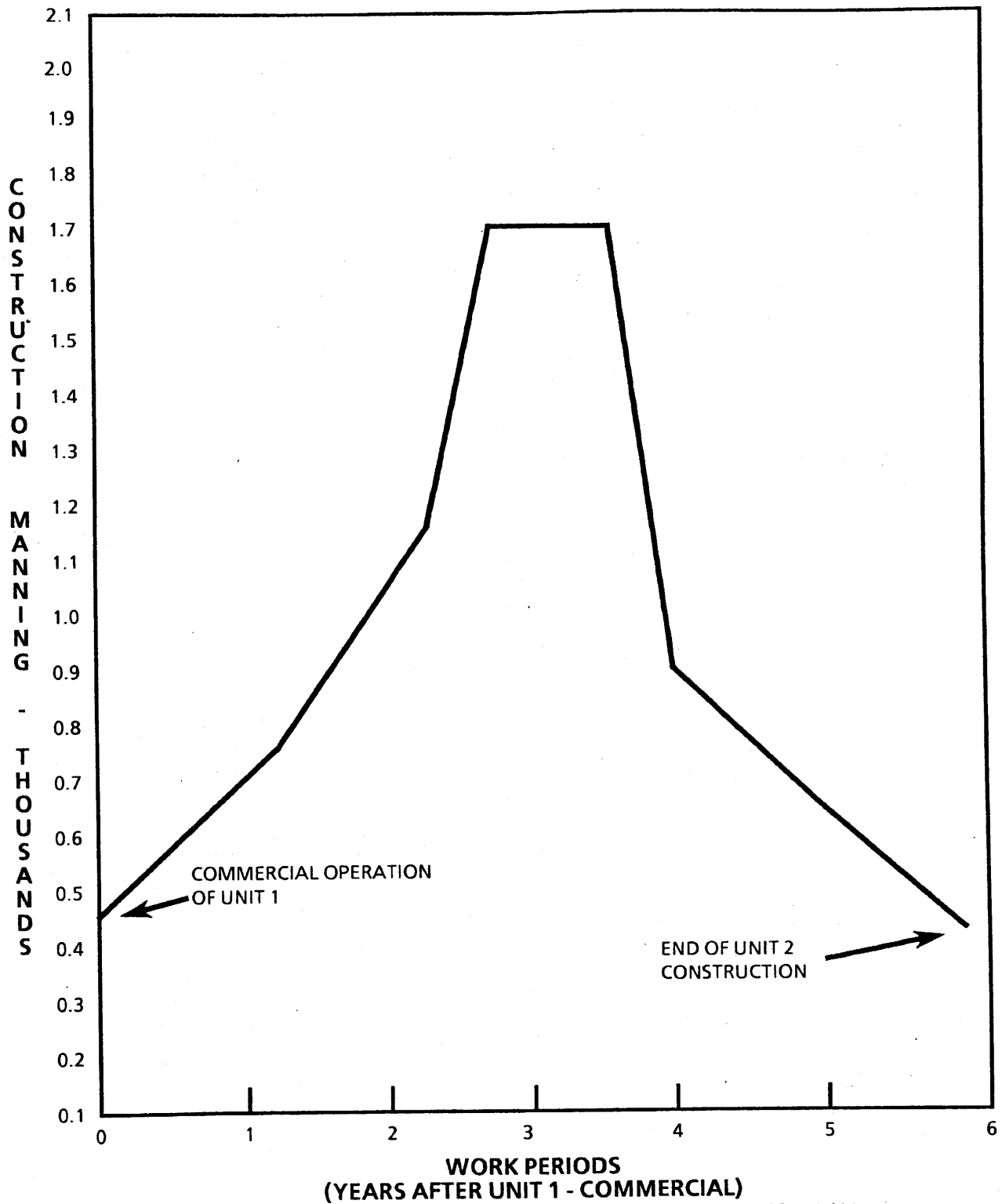
Inclined Fuel Transfer
Tube Radiation Shielding

Figure 12.3-21

REVISIONS						DESCRIPTION
CHG.	DATE	BY	CHKD	APPR	REVD	
1	8/2/83	WJ	WJ			REVISED PER PERRY PROJECT 12.3-22
2	8/2/83	WJ	WJ			REVISED PER PERRY PROJECT 12.3-22
3	8/2/83	WJ	WJ			REVISED PER PERRY PROJECT 12.3-22

BILL OF MATERIAL						DESCRIPTION	MATERIAL
ITEM	PART NUMBER	QTY	UNIT	QTY	UNIT		
1	1	1	1	1	1	FINAL ASSEMBLY	SEE PERRY PROJECT 12.3-22
2	3	3	COMPL	3	COMPL	PRE FILTER N° 77A-02-03 NL	
4	4	4	COMPL	4	COMPL	HEPA FILTER N° 007-02-03 NU	
6	1	1	COMPL	1	COMPL	CARBON TRAY	
1	2	2	COMPL	2	COMPL	CARBON TRAY WITH TEST CANISTERS	
23	3	3	COMPL	3	COMPL	NUT - HEX 3/8" DIA	SI-GRZ
28	7	7	COMPL	7	COMPL	WASHER - 3/8" DIA	SGT-18-B
28	11	11	2521-MOM	11	2521-MOM	CLAMP RETAINER	STD. PRD.





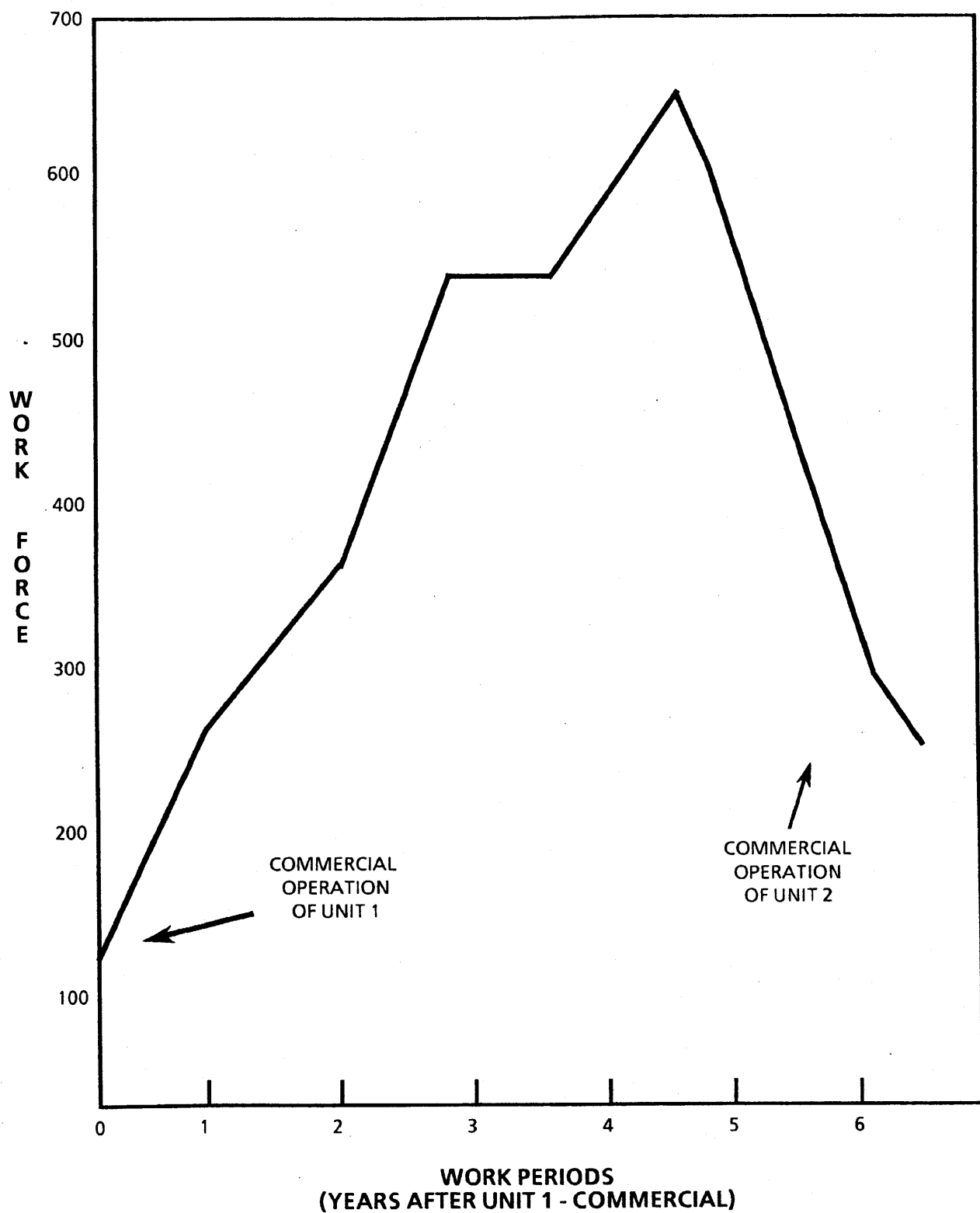
(Rev. 12 1/03)



PERRY NUCLEAR POWER PLANT

Engineering and Construction
Schedule

Figure 12.4-1



(Rev. 12 1/03)



PERRY NUCLEAR POWER PLANT

Site Organization Manning
(Without Perry Plant Department)

Figure 12.4-2

Removed in Accordance with RIS 2015-17

PERRY NUCLEAR POWER PLANT
10 CENTER RD., PERRY, OHIO 44081

POST-ACCIDENT RADIATION ZONES,
PLAN A ABOVE ELEVS. 568'-6", 574'-10",
577'-6" AND 580'-6", PLANT COMPLEX
FIGURE 12.6-1
(DWG. E-013-0003-00000)

Removed in Accordance with RIS 2015-17

PERRY NUCLEAR POWER PLANT
10 CENTER RD., PERRY, OHIO 44081

POST-ACCIDENT RADIATION ZONES,
PLAN B ABOVE ELEV. 593'-6",
599'-0", 600'-6", 602'-6", AND 605'-6",
PLANT COMPLEX
FIGURE 12.6-2
(DWG. E-013-0004-00000)

Removed in Accordance with RIS 2015-17

PERRY NUCLEAR POWER PLANT
10 CENTER RD., PERRY, OHIO 44081

POST-ACCIDENT RADIATION ZONES,
PLAN C ABOVE ELEVS. 620'-6",
623'-6" AND 624'-6", PLANT COMPLEX
FIGURE 12.6-3
(DWG. E-013-0005-00000)

Removed in Accordance with RIS 2015-17

PERRY NUCLEAR POWER PLANT
10 CENTER RD., PERRY, OHIO 44081

POST-ACCIDENT RADIATION ZONES,
PLAN D ABOVE ELEVS. 638'-6", 642'-0"
AND 647'-6", PLANT COMPLEX
FIGURE 12.6-4
(DWG. E-013-0006-00000)

Removed in Accordance with RIS 2015-17

PERRY NUCLEAR POWER PLANT
10 CENTER RD., PERRY, OHIO 44081

POST-ACCIDENT RADIATION ZONES,
PLAN E ABOVE ELEVS. 652'-0"
AND EL. 654'-6", PLANT COMPLEX
FIGURE 12.6-5
(DWG. E-013-0007-00000)

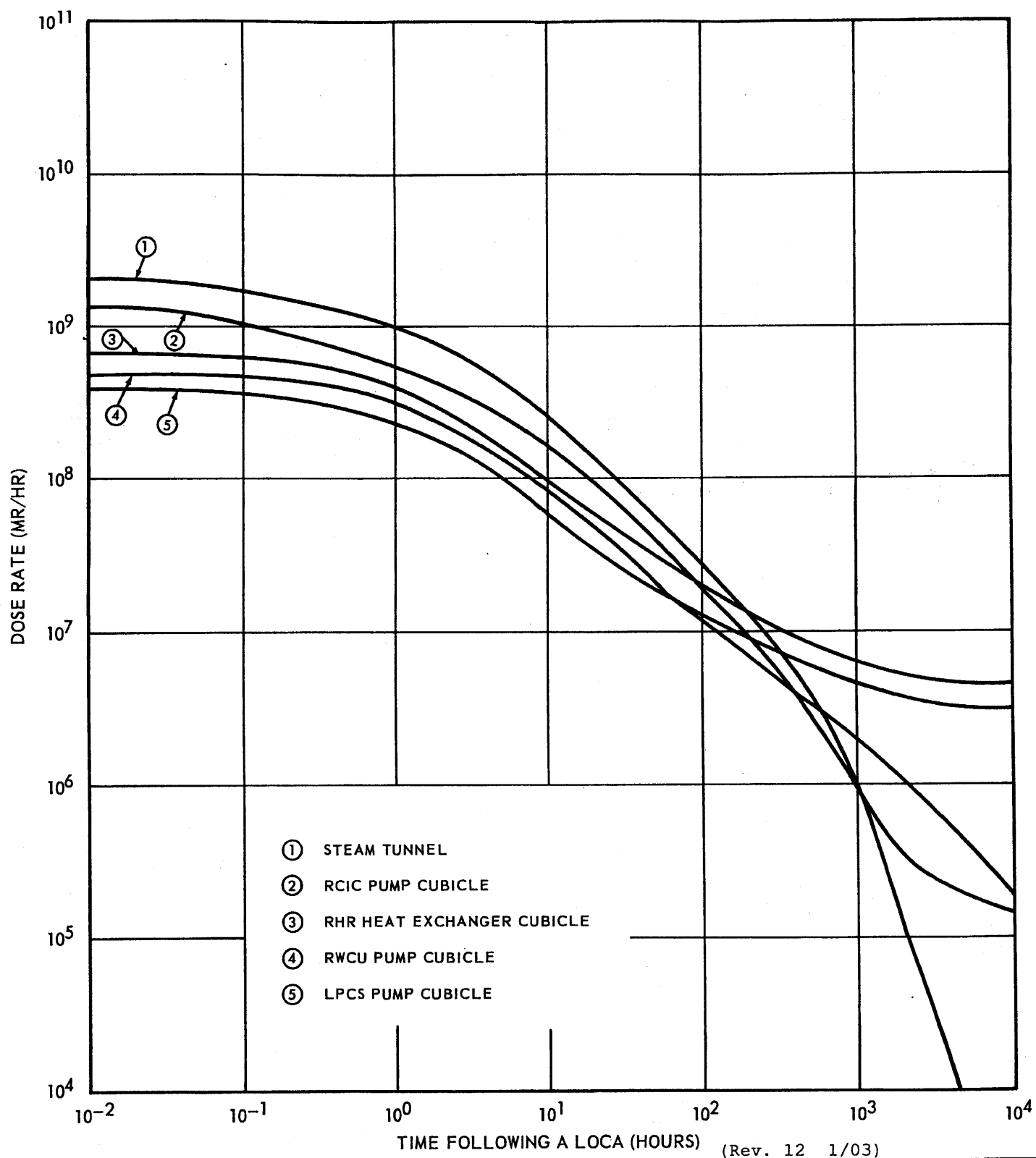
Removed in Accordance with RIS 2015–17

<p>PERRY NUCLEAR POWER PLANT 10 CENTER RD., PERRY, OHIO 44081</p>
<p>POST-ACCIDENT RADIATION ZONES, PLAN F ABOVE ELEV. 664'-7", 665'-0", AND 670'-6", PLANT COMPLEX FIGURE 12.6-6 (DWG. E-013-0008-00000)</p>

Removed in Accordance with RIS 2015-17

PERRY NUCLEAR POWER PLANT
10 CENTER RD., PERRY, OHIO 44081

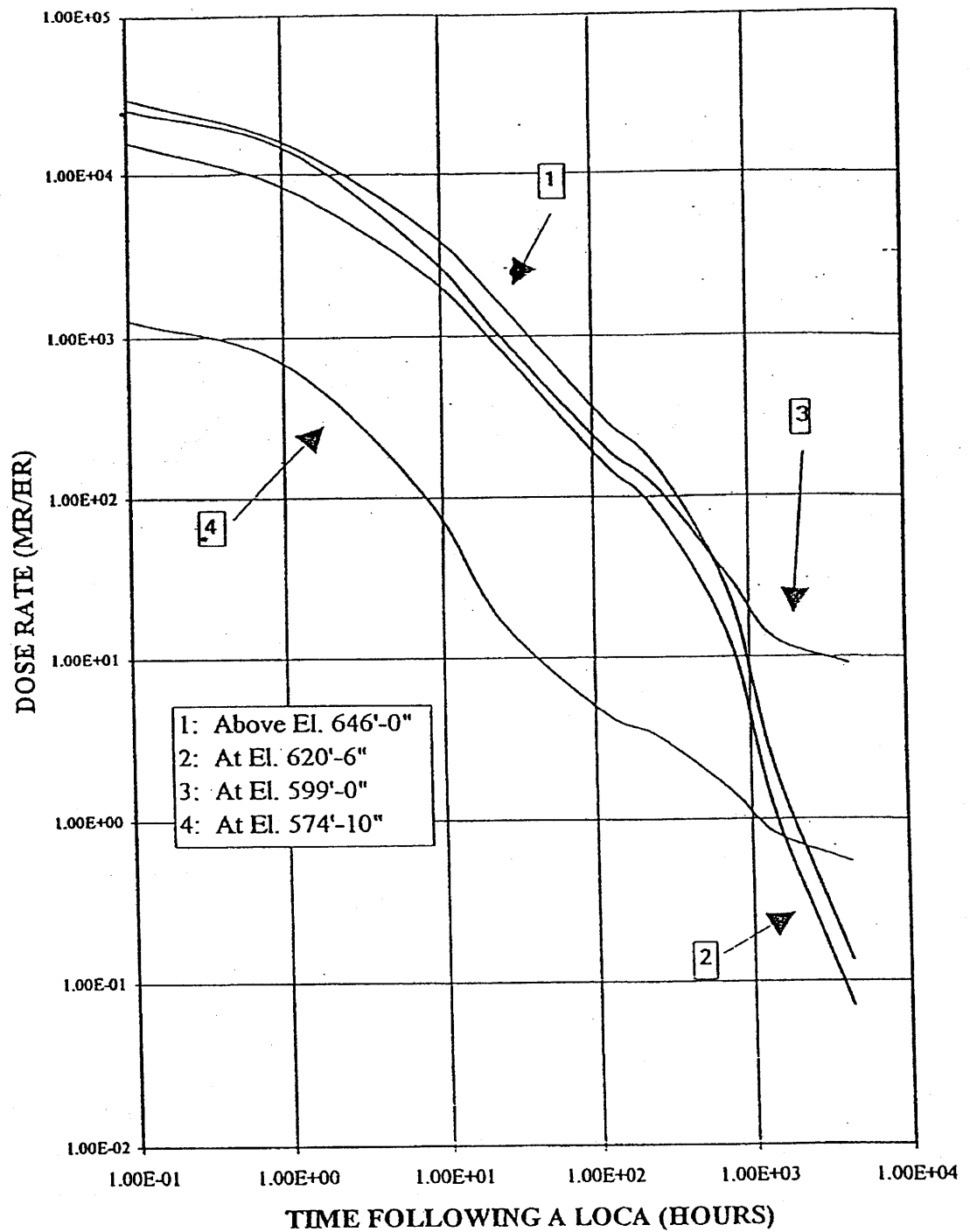
POST-ACCIDENT RADIATION ZONE,
PLAN G ABOVE ELEVS. 689'-6",
PLANT COMPLEX
FIGURE 12.6-7
(DWG. E-013-0009-00000)



PERRY NUCLEAR POWER PLANT

Auxiliary Building Dose Rates
 Versus Time Following a LOCA

Figure 12.6-8



(Rev. 13 12/03)



PERRY NUCLEAR POWER PLANT

Intermediate Building Dose
Rates Versus Time Following a LOCA

Figure 12.6-9