

LEGEND:

LO - LOCK OPEN
V - VENT TO ATMOSPHERE
DH - DRAIN HEADER
VH - VENT HEADER
GA - AUTOMATIC GAS ANALYZER
N - NITROGEN SUPPLY MANIFOLD
LD - LOCAL DRAIN
RWST - REFUELING WATER STORAGE TANK
VB - VACUUM BREAKER
LC - LOCK CLOSED
FC - FAIL CLOSED
FO - FAIL OPEN
ST - TEMPORARY STRAINER
T.S. - TRIP ON CONTAINMENT ISOLATION SIGNAL
L.S. - LOCKED SHUT

REFERENCES:

1. PROCESS FLOW DIAGRAM ④ DWG 6855438
2. DEFINITION OF SYMBOLS
④ E. SPEC G675176 REV. 2
3. INSTRUMENTATION & CONTROL STANDARDS ④ SYMBOLS AND APPLICATIONS FOR INSTRUMENT DIAGRAMS. SECTION 1.1
ISSUED AUG. 12, 1966
4. MATERIAL SPECIFICATION AND FITTINGS
NYPA SPEC. TS-MS-024
④ E. SPEC G676398 REV. 0

REFERENCE DRAWINGS:

9321-C-27413 NUCLEAR LINE SCHEDULE
9321-F-27303 WD WASTE DISPOSAL SYSTEM-GAS
9321-F-27353 ST SAFETY INJECTION SYSTEM SHT. 1
9321-F-27503 ST SAFETY INJECTION SYSTEM SHT. 2
9321-F-27363 CH CHEMICAL & VOLUME CONTROL SYSTEM SHT. 1
9321-F-27373 CH CHEMICAL & VOLUME CONTROL SYSTEM SHT. 2
9321-F-27383 RC REACTOR COOLANT SYSTEM SHT. 1
9321-F-27473 RC REACTOR COOLANT SYSTEM SHT. 2
9321-F-27453 SP SAMPLING SYSTEM
9321-F-27513 AC AUXILIARY COOLANT SYSTEM SHT. 1 & 2
9321-F-27223 SWN SERVICE WATER SYSTEM-NUCLEAR STM. SUPPLY PT.
9321-F-27233 N NITROGEN TO NUCLEAR EQUIPMENT
9321-F-27243 PW PRIMARY MAKE-UP WATER SYSTEM
9321-F-27283 NED NUCLEAR EQUIPMENT DRAINS
9321-F-27483 IV ISOLATION VALVE SEAL WATER SYSTEM
9321-F-27273 AS AUX. STM. & CONDENSATE FOR P.A. BLDG.
9321-F-27253 GA AUTOMATIC GAS ANALYZER SYSTEM

A188852 - CON. ED. DWG. INTEGRATED LIQUID WASTE SYSTEM

NOTES:

1. FOURTEEN DIAMETERS OF STRAIGHT PIPE REQUIRED BETWEEN FLOW METER AND UPSTREAM TEE
- 2.
3. BUBBLER TUBE 3/4" CLASS 153. FOLLOWING VALVES REQUIRE FIELD INSTALLED 3/4" TUBE BY 3/4" PIPE INSERTS TO MATCH 1741, 1705, 1695, 1735, 1697, 1768, & 1769
4. VALVE ACTUATED BY GAS ANALYZER. I & C CHANNEL NO. AC-1067
5. WDS BUBBLERS OPERATE ON INSTRUMENT AIR EXCEPT SPENT RESIN STORAGE TANK CHANNEL LT-1005 WHICH USES NITROGEN
6. ELECTRIC HEAT TRACED
7. STRAINER ST-40 WAS INSTALLED FOR INITIAL FLUSH. STRAINER BASKET HAS BEEN REMOVED UNDER MWR NO. 93-10158
8. VALVE 1724 AND TEMPERATURE COMPENSATOR FURNISHED WITH CE-1063 BY INSTRUMENT VENDOR
9. FOR SYMBOLS LEGEND REFER TO DWG. 9321-D-20163 AND BECHTEL DWG. 3M74-001
10. STRAINER WD-ST-47 IS TO REMAIN AS A PERMANENT STRAINER PER NSE 94-338
11. ALL VALVE NUMBERS ARE PRECEDED BY "WD" AS THE SYSTEM DESIGNATION EXCEPT AS NOTED
12. VALVE NO'S WD-200 & WD-202 HAVE REACH RODS TO PERMIT OPERATION FROM PLATFORM AT EL. 44'-0"
13. LINES 019 & 021-HCD-6" ARE WELDED TO EXPOSED HUB OF 4" EQUIPMENT DRAIN
- 14.
15. PORTIONS OF LINES #130 & #446 WITH ELEVATION LOWER THAN TOP OF WASTE HOLDUP TANK IS SEISMIC CLASS I

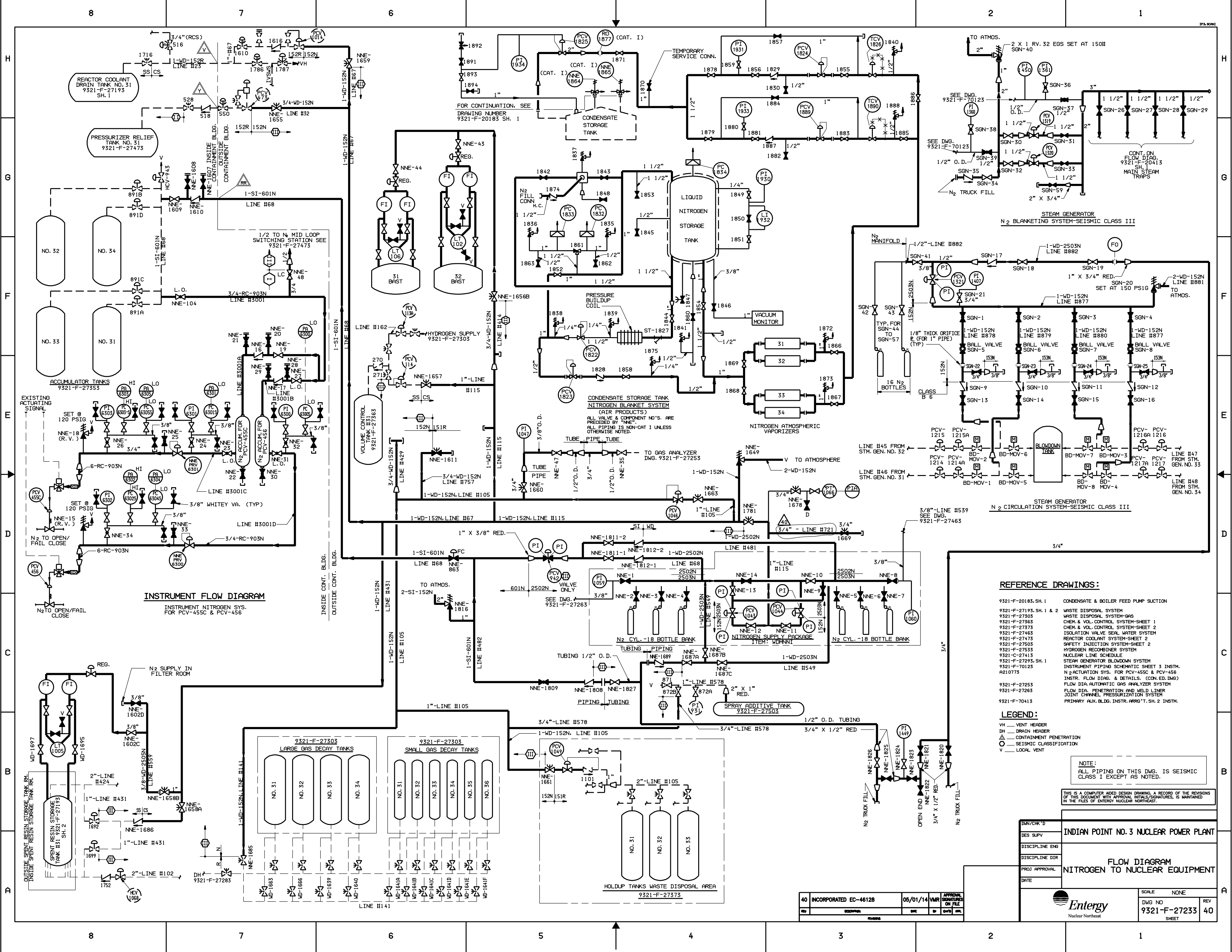
SEISMIC CLASSIFICATION

CONTAINMENT PENETRATION

DWG NO.	9321-F-27193
REV	3
DATE	05/15/08
BY	DM
CHECKED	DM
APPROVED	DM
SCALE	NONE
DWG NO.	9321-F-27193
SHEET	3
REV	17
TYPE	A/FSAR

Entergy
Nuclear Northeast

INDIAN POINT NO. 3 NUCLEAR POWER PLANT
FLOW DIAGRAM
WASTE DISPOSAL SYSTEM
SHEET NO. 3
WASTE HOLDUP PIT



- REFERENCE DRAWINGS:**
- 9321-F-20183, SH. 1 CONDENSATE & BOILER FEED PUMP SUCTION
 - 9321-F-27193, SH. 1 & 2 WASTE DISPOSAL SYSTEM
 - 9321-F-27303 WASTE DISPOSAL SYSTEM-GAS
 - 9321-F-27365 CHEM. & VOL. CONTROL SYSTEM-SHEET 1
 - 9321-F-27373 CHEM. & VOL. CONTROL SYSTEM-SHEET 2
 - 9321-F-27463 ISOLATION VALVE SEAL WATER SYSTEM
 - 9321-F-27473 REACTOR COOLANT SYSTEM-SHEET 2
 - 9321-F-27503 SAFETY INJECTION SYSTEM-SHEET 2
 - 9321-F-27533 HYDROGEN RECOMBINER SYSTEM
 - 9321-C-27413 NUCLEAR LINE SCHEDULE
 - 9321-F-27293, SH. 1 STEAM GENERATOR BLOWDOWN SYSTEM
 - 9321-F-70123 INSTRUMENT PIPING SCHEMATIC SHEET 3 INSTR.
 - 9321-F-70123 N2 ACTUATION SYS. FOR PCV-455C & PCV-456
 - 9321-F-27253 INSTR. FLOW DIAG. & DETAILS (CON. ED. DWG)
 - 9321-F-27263 FLOW DIA. AUTOMATIC GAS ANALYZER SYSTEM
 - 9321-F-70413 FLOW DIA. PENETRATION AND WELD LINEER JOINT CHANNEL PRESSURIZATION SYSTEM
 - 9321-F-70413 PRIMARY AUX. BLDG. INSTR. ROOM T. SH. 2 INSTR.

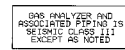
- LEGEND:**
- VH VENT HEADER
 - DH DRAIN HEADER
 - △ CONTAINMENT PENETRATION
 - SEISMIC CLASSIFICATION
 - V LOCAL VENT

NOTE:
ALL PIPING ON THIS DWG. IS SEISMIC CLASS I EXCEPT AS NOTED.

THIS IS A COMPUTER AIDED DESIGN DRAWING. A RECORD OF THE REVISIONS OF THIS DOCUMENT WITH APPROVAL INITIALS/SIGNATURES, IS MAINTAINED IN THE FILES OF ENTERTY NUCLEAR NORTHEAST.

DWG/CHK'D	DES SUPV	DISCIPLINE ENG	DISCIPLINE DIR	PROJ APPROVAL	DATE
INDIAN POINT NO. 3 NUCLEAR POWER PLANT					
FLOW DIAGRAM NITROGEN TO NUCLEAR EQUIPMENT					
SCALE NONE					
DWG NO 9321-F-27233					
REV 40					
SHEET					

40	INCORPORATED EC-46128	05/01/14	VMR	APPROVAL	SIGNATURES	ON FILE
REV	DESCRIPTION	DATE	BY	CHKD	APPD	



9321-F-27235 NITROGEN TO NUCLEAR EQUIPMENT
9321-C-27413 NUCLEAR LINE SCHEDULE
9321-F-27375 CHEMICAL & VOLUME CONTROL SYS. SH. 2
9321-F-27305 WASTE DISPOSAL SYSTEM-GAS
9321-F-27363 CHEMICAL & VOLUME CONTROL SYS. SH. 1
9321-F-27473 REACTOR COOLANT SYSTEM SH. 2
9321-F-27193, SH. 1 & 2 WASTE DISPOSAL SYSTEM
9321-F-27473 REACTOR COOLANT SYSTEM, SH. 2

- 1- VALVES 1800A THRU 1800L ARE ACTUATED AUTOMATICALLY BY GAS ANALYZER 1 & C CHANNEL NO. AC-1067.
- 2- ALL VALVE NUMBERS ARE PRECEDED BY A "GA" SYSTEM DESIGNATION UNLESS OTHERWISE NOTED.
- 3- THE WASTE GAS ANALYZER SYSTEM IS NON-CAT. 1, WITH THE EXCEPTION OF THE MICROPROCESSOR AND ASSOCIATED ALARMS, WHICH IS CAT "M". ALL SYSTEM SUPPORTS ARE QA CAT 1.

ER-IP3-05-10935
REVISION
REVISION

SCALE: NONE	
DWG NO 9321-F-27253	REV 19

TYPE A/FSAR

