
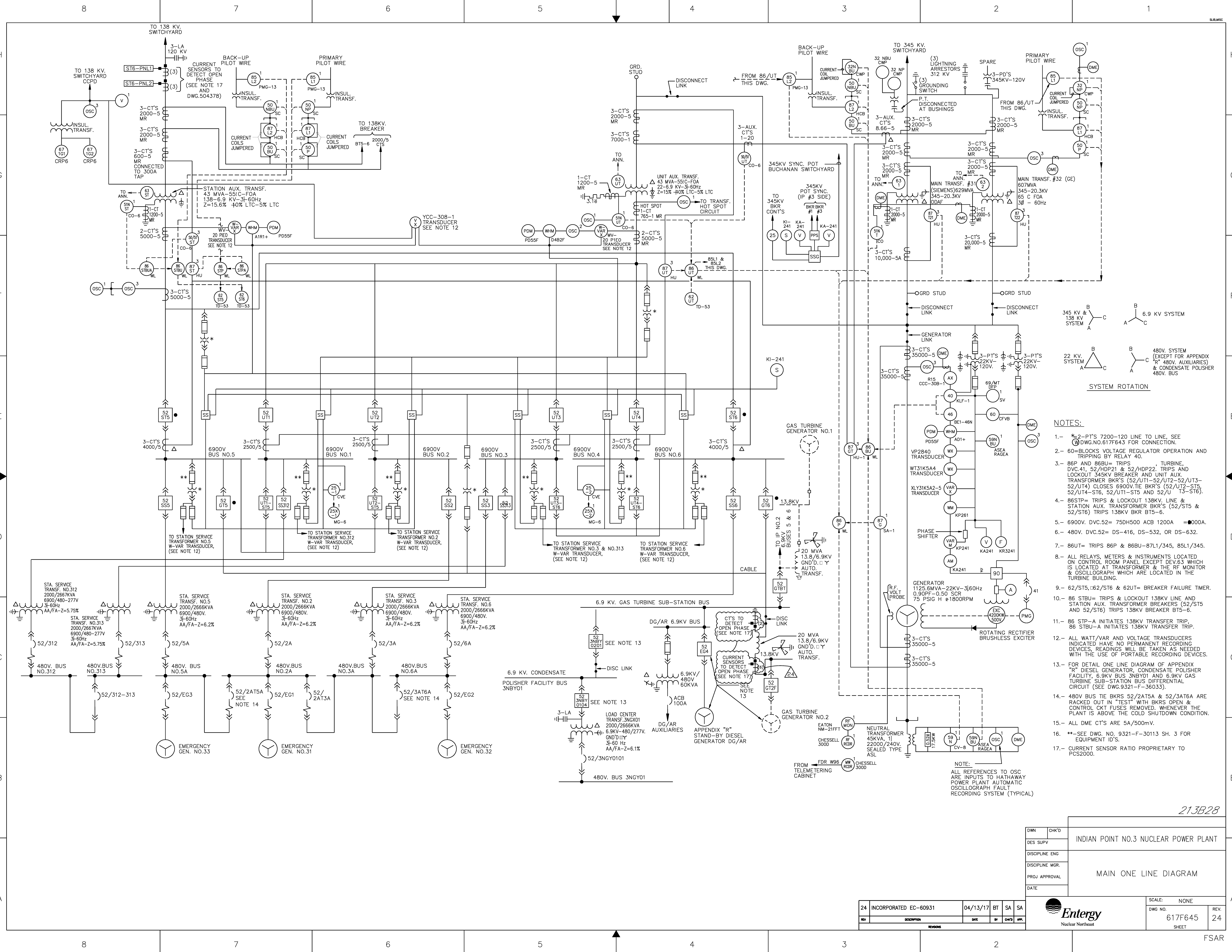


37	INCORPORATED EC-62778	03/22/17	SM	APPROVAL
REV	DESCRIPTION	DATE	BY	CHK'D APP.
REVISIONS				

DWN	CHK'D	INDIAN POINT NO.3 NUCLEAR POWER PLANT	
DES. SUPV			
DISCIPLINE ENG			
DISCIPLINE MGR.			
PROJ. APPROVAL			
DATE		480V ONE LINE DIAGRAM	
 Entergy Nuclear Northeast		SCALE: NONE	
		DWG NO	REV
		617F644	37

THIS IS A COMPUTER AIDED DESIGN DRAWING. A RECORD OF THE REVISIONS OF THIS DOCUMENT WITH APPROVAL INITIALS/SIGNATURES, IS MAINTAINED IN THE FILES OF ENTERGY NUCLEAR NORTHEAST



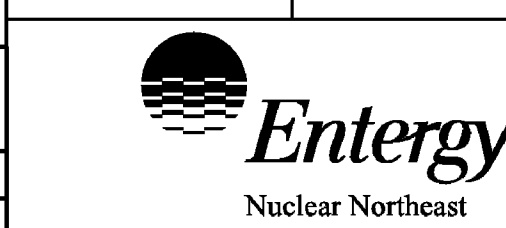
NOTES:

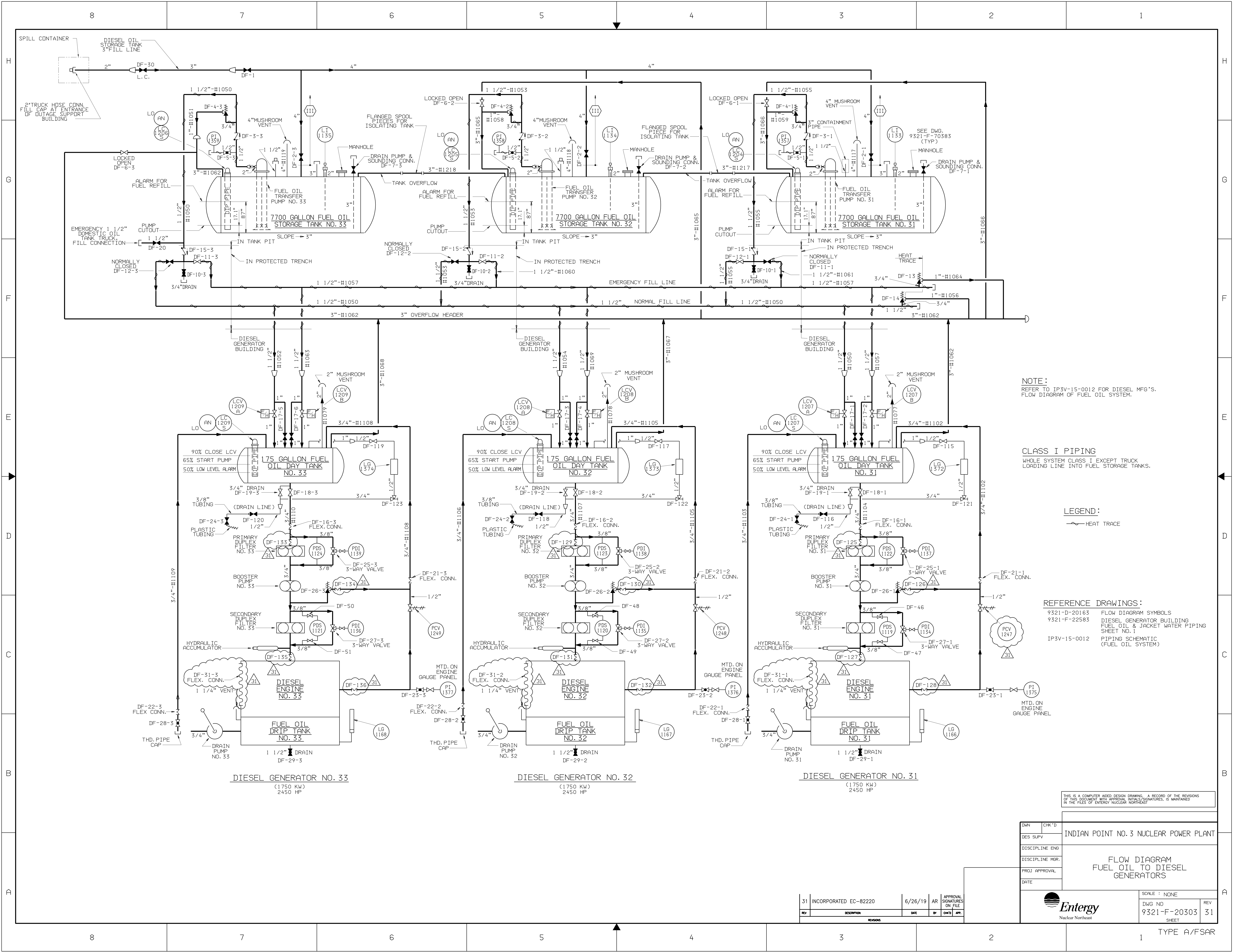
- 1. - *2-PT'S 7200-120V LINE, SEE DWG. NO. 617F643 FOR CONNECTION.
- 2. - 60=BLOCKS VOLTAGE REGULATOR OPERATION AND TRIPPING BY RELAY 40.
- 3. - 86P AND 86BU= TRIPS DVC.41, 52/HDP21 & 52/HDP22, TURBINE LOCKOUT 345KV BREAKER AND UNIT AUX. TRANSFORMER BKR'S (52/UT1-52/UT2-52/UT3-52/UT4) CLOSING 6900V TIE BKR'S (52/UT2-ST5, 52/UT4-ST6, 52/UT1-ST5 AND 52/UT1-ST6).
- 4. - 86STP= TRIPS & LOCKOUT 138KV LINE & STATION AUX. TRANSFORMER BKR'S (52/ST5 & 52/ST6) TRIPS 138KV BKR BT5-6.
- 5. - 6900V. DVC.52= 750H500 ACB 1200A =0000A.
- 6. - 480V. DVC.52= DS-416, DS-532, OR DS-632.
- 7. - 86UT= TRIPS 86P & 86BU-87L1/345, 85L1/345.
- 8. - ALL RELAYS, METERS & INSTRUMENTS LOCATED ON CONTROL ROOM PANEL EXCEPT DEV.63 WHICH IS LOCATED AT TRANSFORMER & THE RF MONITOR & OSCILLOGRAPH WHICH ARE LOCATED IN THE TURBINE BUILDING.
- 9. - 62/ST5, 62/ST6 & 62UT= BREAKER FAILURE TIMER.
- 10. - 86 STBU= TRIPS & LOCKOUT 138KV LINE AND STATION AUX. TRANSFORMER BREAKERS (52/ST5 AND 52/ST6) TRIPS 138KV BREAKER BT5-6.
- 11. - 86 STP-A INITIATES 138KV TRANSFER TRIP. 86 STBU-A INITIATES 138KV TRANSFER TRIP.
- 12. - ALL WATT/VAR AND VOLTAGE TRANSDUCERS INDICATED HAVE NO PERMANENT RECORDING DEVICES, READINGS WILL BE TAKEN AS NEEDED WITH THE USE OF PORTABLE RECORDING DEVICES.
- 13. - FOR DETAIL ONE LINE DIAGRAM OF APPENDIX "R" DIESEL GENERATOR, CONDENSATE POLISHER FACILITY, 6.9KV BUS 3NBY01 AND 6.9KV GAS TURBINE SUB-STATION BUS DIFFERENTIAL CIRCUIT (SEE DWG. 9321-F-36033).
- 14. - 480V BUS TIE BKR'S 52/2AT5A & 52/3AT6A ARE RACKED OUT IN "TEST" WITH BKR'S OPEN & CONTROL CKT FUSES REMOVED. WHENEVER THE PLANT IS ABOVE THE COLD SHUTDOWN CONDITION.
- 15. - ALL DME CT'S ARE 5A/500mV.
- 16. - **SEE DWG. NO. 9321-F-30113 SH. 3 FOR EQUIPMENT ID'S.
- 17. - CURRENT SENSOR RATIO PROPRIETARY TO PCS2000.

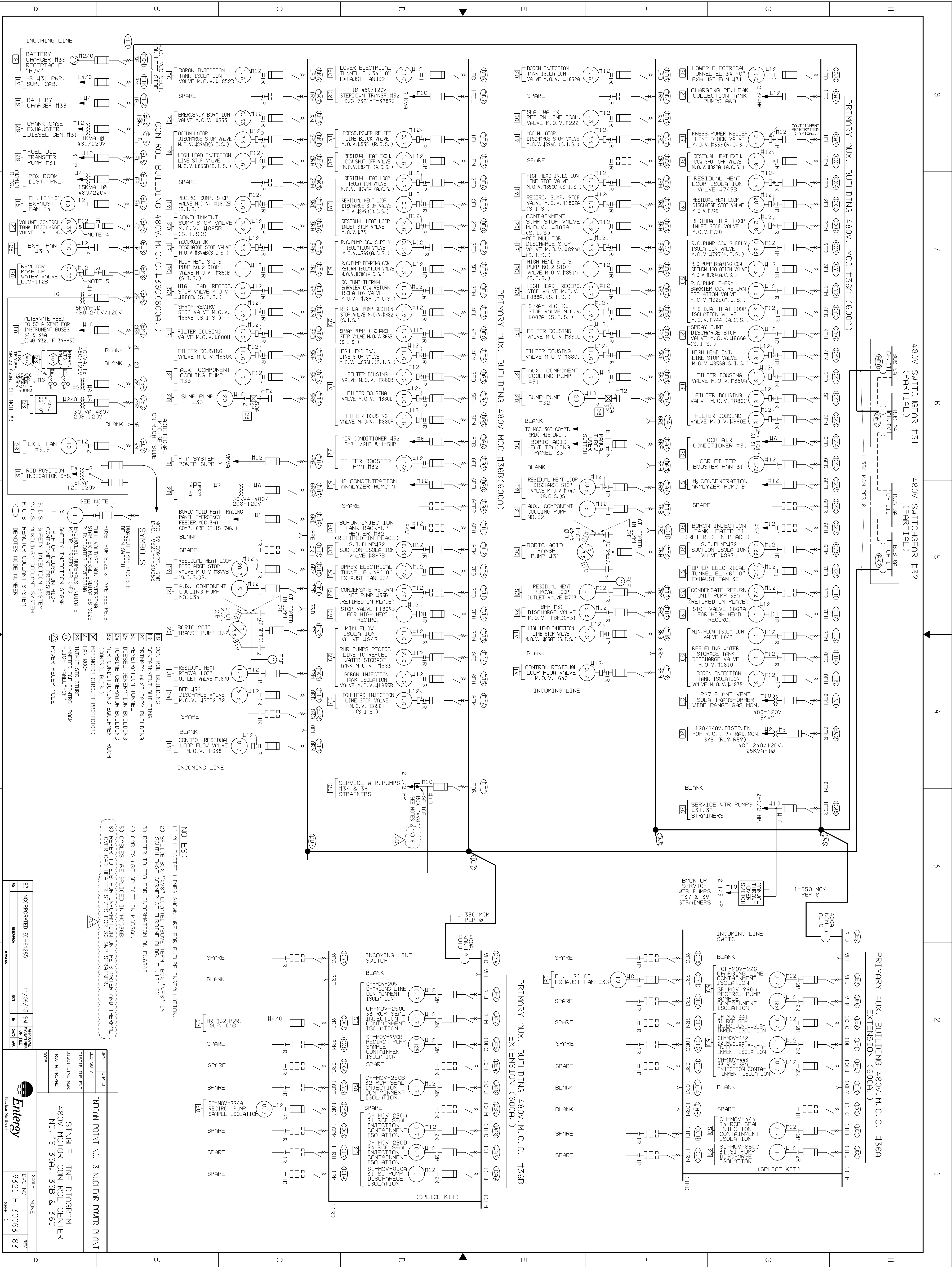
213B28

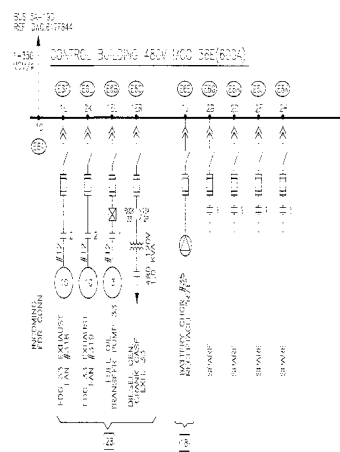
DWN	CHK'D	INDIAN POINT NO.3 NUCLEAR POWER PLANT
DES SUPV		
DISCIPLINE ENG		
DISCIPLINE MGR.		
PROJ APPROVAL		
DATE		MAIN ONE LINE DIAGRAM

SCALE:	NONE	REV.	24
DWG NO.	617F645	SHEET	24





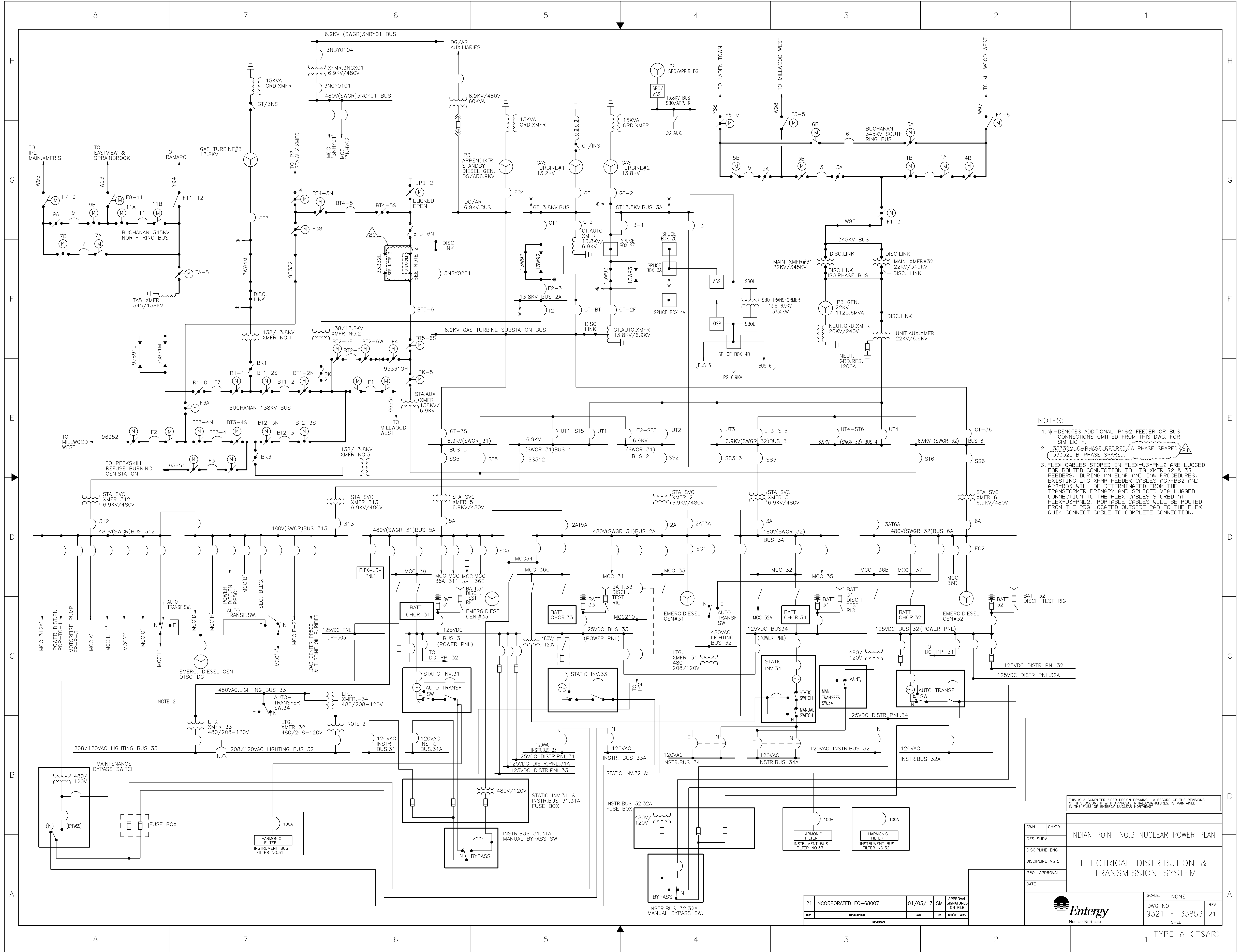


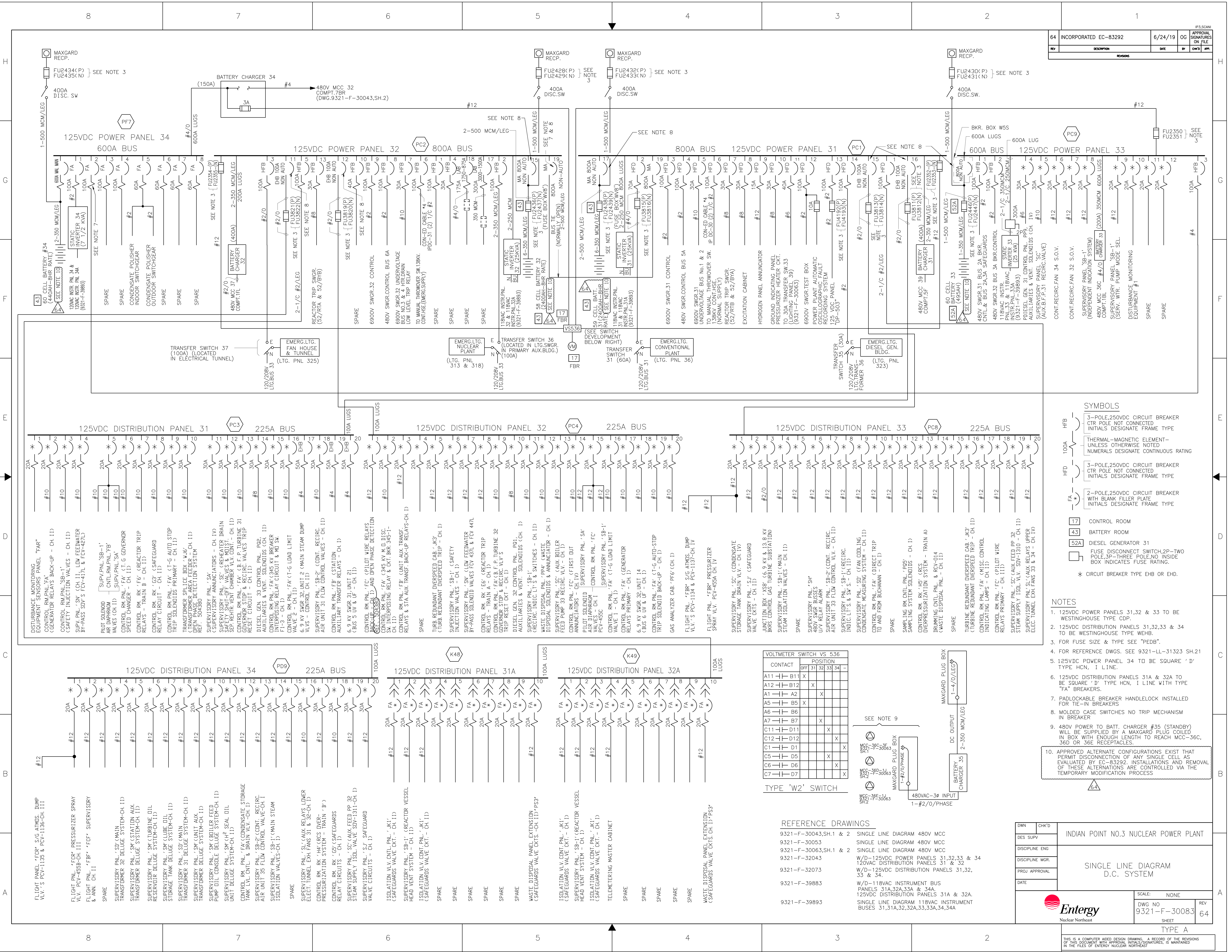


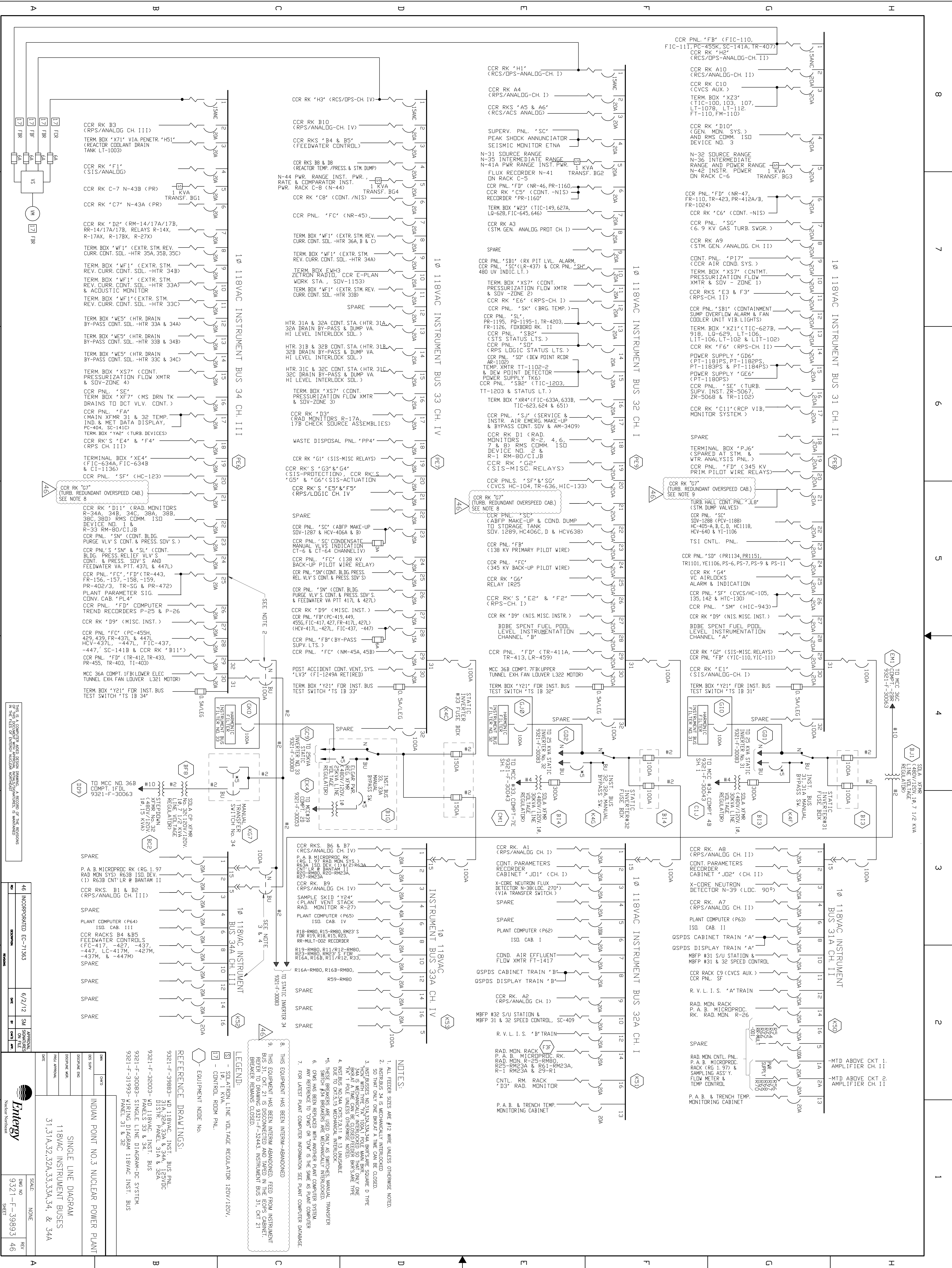
-  NORTH
 CABLE OR PIPE
 PIPE, FOR SIZE & TYPE SEE PDSB
 WALL, WINDOW, DOOR, ETC.
 WINDOW OPENING
 DOOR OPENING
 ELECTRICAL EQUIPMENT
 MECHANICAL EQUIPMENT
 ROOM NUMBER
 CONTROL BUILDING
 DIESEL BUILDING
 SHIP MOTOR SHAFT PROTECTION
 POWER RECEPTACLE

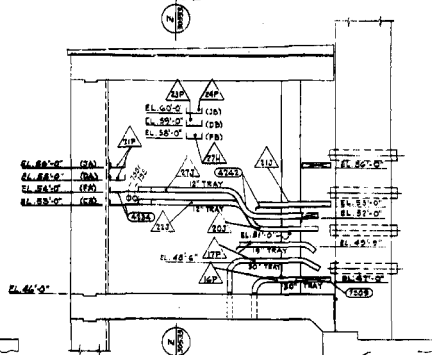
10	100-FOURTEEN 394-05-0304 29 12-06-1955	100-100	52	100-100
11	100-100	100	100	100

[illegible]

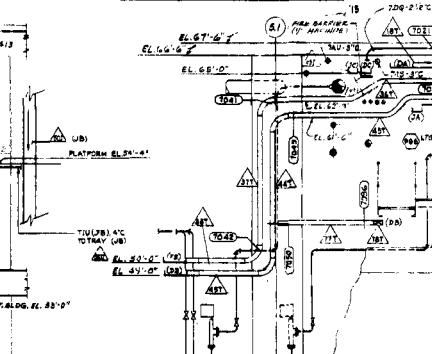




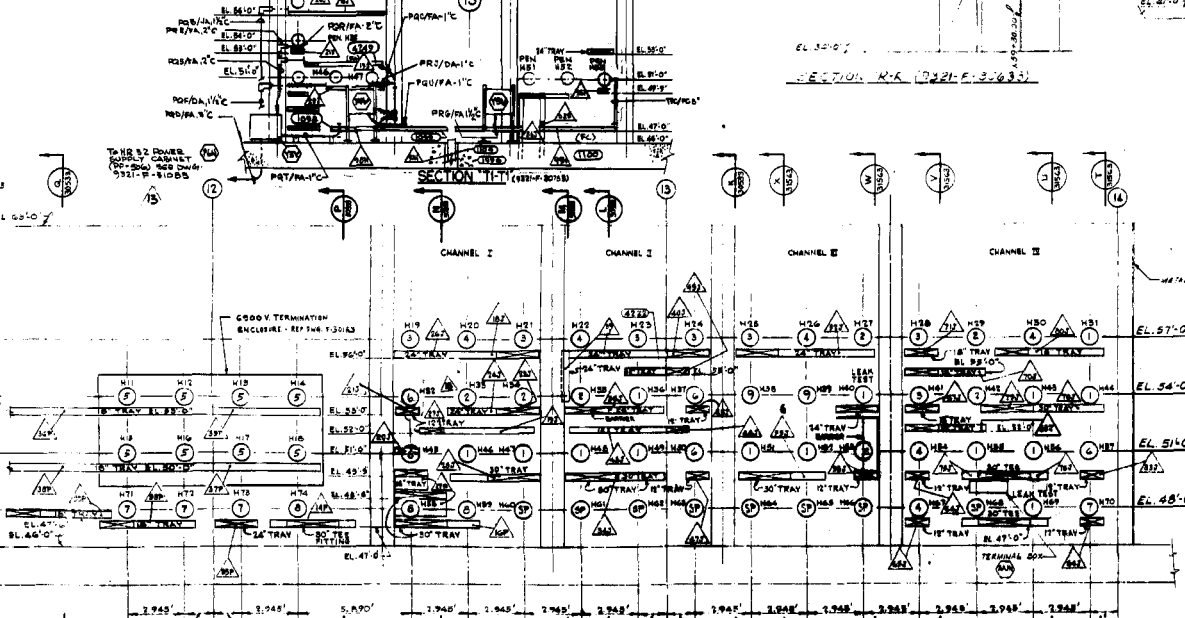




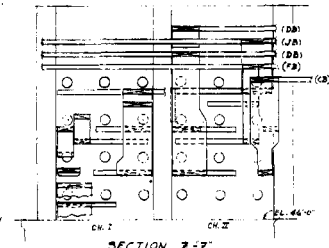
SECTION 'N-N' (9321-F-50613)



SECTION K-K (2221-F-30633)



ELEVATION "A-A"
 ABC LENGTH MEASURED ON INSIDE OF LINE
SCALE: 3/8" = 1'-0"



SECTION 2-2

REFERENCE DRAWINGS
SEE DWG. 9201-F 31558 FOR DWG. NUMBERS.
FOR COMPLETE ROUTING OF CABLE, LISTING OF TRAY
JUNCTION & SECTION NODE NUMBERS SEE 9201-F-33503

[illegible]

WESTINGHOUSE ELECTRIC CORPORATION
ELECTRICAL PENETRATIONS & CABLE TRAYS
SECTIONS

FOR
CONSOLIDATED EDISON COMPANY
INDIAN POINT GENERATING STATION
UNIT NO. 2

9321-F-30533-13

A202420