

LEGEND:  
○ SEISMIC CLASSIFICATION  
— INDICATES THERMAL SLEEVE

REF. DWG.:  
ISI-27383 - INSERVICE INSPECTION FOR  
REACTOR COOLANT SYSTEM

THIS IS A COMPUTER AIDED DESIGN DRAWING. A RECORD OF THE REVISIONS  
TO THIS DOCUMENT WITH APPROVAL INITIALS/SIGNATURES, IS MAINTAINED  
IN THE FILES OF ENTERTY NUCLEAR NORTHWEST.

REDRAWN FROM @ DWG. 685J413

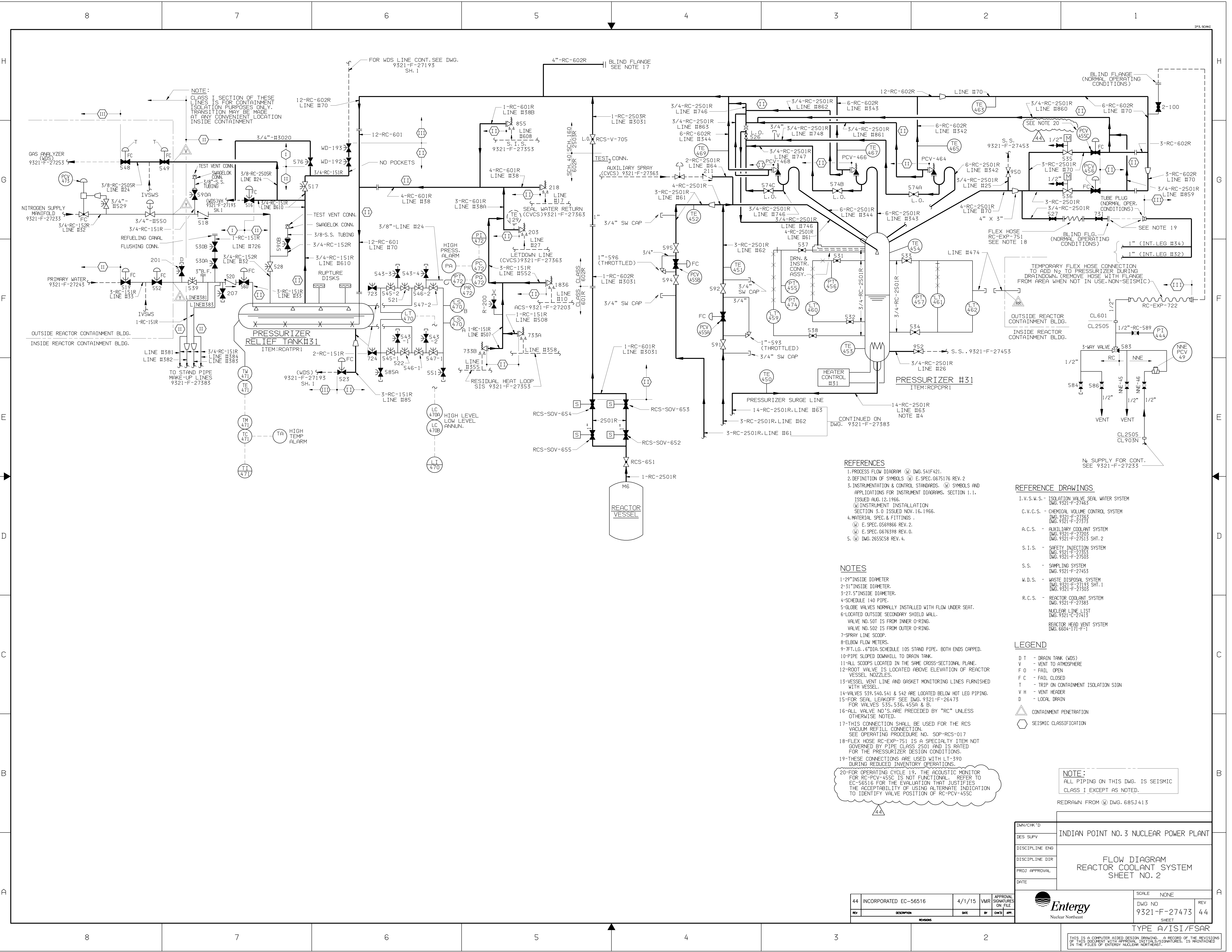
INDIAN POINT NO. 3 NUCLEAR POWER PLANT

FLOW DIAGRAM  
REACTOR COOLANT SYSTEM  
SHEET NO. 1



SCALE: NONE  
DWG NO 9321-F-27383 28  
SHEET

1 TYPE A/ISI/FSAR



REFERENCES

- 1. PROCESS FLOW DIAGRAM (PFD) DWG. 541F421.
- 2. DEFINITION OF SYMBOLS (D.S.) E.SPEC. 6675176 REV. 2
- 3. INSTRUMENTATION & CONTROL STANDARDS. (I.C.S.) SYMBOLS AND APPLICATIONS FOR INSTRUMENT DIAGRAMS, SECTION 1.1.
- ISSUED AUG. 12, 1966.
- (I.C.S.) INSTRUMENT INSTALLATION SECTION 3.0 ISSUED NOV. 16, 1966.
- 4. MATERIAL SPEC. & FITTINGS (M.S.F.) E.SPEC. 6569866 REV. 2.
- (M.S.F.) E.SPEC. 6676398 REV. 0.
- 5. (M.S.F.) DWG. 2655C58 REV. 4.

NOTES

- 1-29" INSIDE DIAMETER
- 2-31" INSIDE DIAMETER
- 3-27.5" INSIDE DIAMETER
- 4-SCHEDULE 140 PIPE
- 5-GLOBE VALVES NORMALLY INSTALLED WITH FLOW UNDER SEAT.
- 6-LOCATED OUTSIDE SECONDARY SHIELD WALL.
- VALVE NO. 501 IS FROM INNER O-RING.
- VALVE NO. 502 IS FROM OUTER O-RING.
- 7-SPRAY LINE SCOOP
- 8-ELBOW FLOW METERS
- 9-7FT. LG., 6" DIA. SCHEDULE 10S STAND PIPE, BOTH ENDS CAPPED.
- 10-PIPE SLOPED DOWNHILL TO DRAIN TANK.
- 11-ALL SCOPES LOCATED IN THE SAME CROSS-SECTIONAL PLANE.
- 12-ROOT VALVE IS LOCATED ABOVE ELEVATION OF REACTOR VESSEL NOZZLES
- 13-VESSEL VENT LINE AND GASKET MONITORING LINES FURNISHED WITH VESSEL
- 14-VALVES 539, 540, 541 & 542 ARE LOCATED BELOW HOT LEG PIPING.
- 15-FOR SEAL LEAKOFF, SEE DWG. 9321-F-26473 FOR VALVES 535, 536, 455A & B.
- 16-ALL VALVE NO.'S ARE PRECEDED BY "RC" UNLESS OTHERWISE NOTED.
- 17-THIS CONNECTION SHALL BE USED FOR THE RCS VACUUM REFILL CONNECTION. SEE OPERATING PROCEDURE NO. SOP-RCS-017
- 18-FLEX HOSE RC-EXP-751 IS A SPECIALTY ITEM NOT GOVERNED BY PIPE CLASS 2501 AND IS RATED FOR THE PRESSURIZER DESIGN CONDITIONS.
- 19-THese CONNECTIONS ARE USED WITH LT-390 DURING REDUCED INVENTORY OPERATIONS.
- 20-FOR OPERATING CYCLE 19, THE ACOUSTIC MONITOR FOR RC-PCV-455C IS NOT FUNCTIONAL. REFER TO EC-56516 FOR THE EVALUATION THAT JUSTIFIES THE ACCEPTABILITY OF USING ALTERNATE INDICATION TO IDENTIFY VALVE POSITION OF RC-PCV-455C

REFERENCE DRAWINGS

- I.V.S.W.S. - ISOLATION VALVE SEAL WATER SYSTEM DWG. 9321-F-27485
- C.V.C.S. - CHEMICAL VOLUME CONTROL SYSTEM DWG. 9321-F-27363 DWG. 9321-F-27373
- A.C.S. - AUXILIARY COOLANT SYSTEM DWG. 9321-F-27203 DWG. 9321-F-27513 SHT. 2
- S.I.S. - SAFETY INJECTION SYSTEM DWG. 9321-F-27353 DWG. 9321-F-27503
- S.S. - SAMPLING SYSTEM DWG. 9321-F-27453
- W.D.S. - WASTE DISPOSAL SYSTEM DWG. 9321-F-27193 SHT. 1 DWG. 9321-F-27303
- R.C.S. - REACTOR COOLANT SYSTEM DWG. 9321-F-27383
- NUCLEAR LINE LIST DWG. 9321-C-27413
- REACTOR HEAD VENT SYSTEM DWG. 6604-171-F-1

LEGEND

- D T - DRAIN TANK (WDS)
- V - VENT TO ATMOSPHERE
- F O - FAIL OPEN
- F C - FAIL CLOSED
- T - TRIP ON CONTAINMENT ISOLATION SIGN
- V H - VENT HEADER
- D - LOCAL DRAIN
- CONTAINMENT PENETRATION
- SEISMIC CLASSIFICATION

NOTE:  
ALL PIPING ON THIS DWG. IS SEISMIC CLASS I EXCEPT AS NOTED.

REDRAWN FROM (Q) DWG. 685J413

|                |  |
|----------------|--|
| DWG/CHK'D      | INDIAN POINT NO. 3 NUCLEAR POWER PLANT |
| DES SUPV       |  |
| DISCIPLINE ENG |  |
| DISCIPLINE DIR |  |
| PROJ APPROVAL  |  |
| DATE           |  |

|        |              |     |  |
|--------|--------------|-----|--|
| SCALE  | NONE         | REV |  |
| DWG NO | 9321-F-27473 | 44  |  |
| SHEET  |              |     |  |

TYPE A/ISI/FSAR

THIS IS A COMPUTER-AIDED DESIGN DRAWING. A RECORD OF THE REVISIONS OF THIS DOCUMENT WITH APPROVAL INITIALS/SIGNATURES, IS MAINTAINED IN THE FILES OF ENTERTY NUCLEAR NORTHEAST.

|     |                       |        |     |                             |
|-----|-----------------------|--------|-----|-----------------------------|
| 44  | INCORPORATED EC-56516 | 4/1/15 | VMR | APPROVAL SIGNATURES ON FILE |
| REV | DESCRIPTION           | DATE   | BY  | CHKD APP.                   |
|     |                       |        |     |                             |