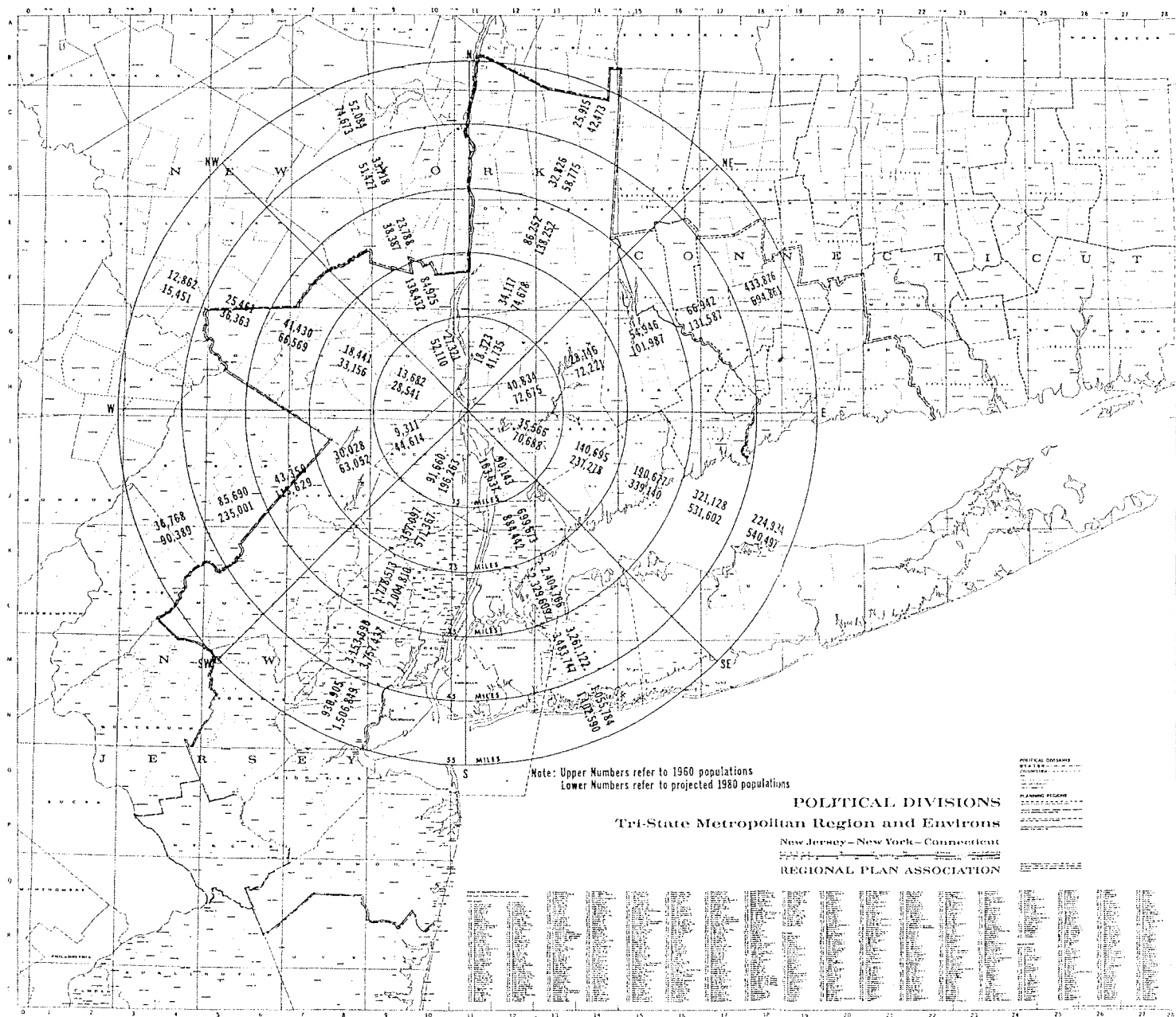
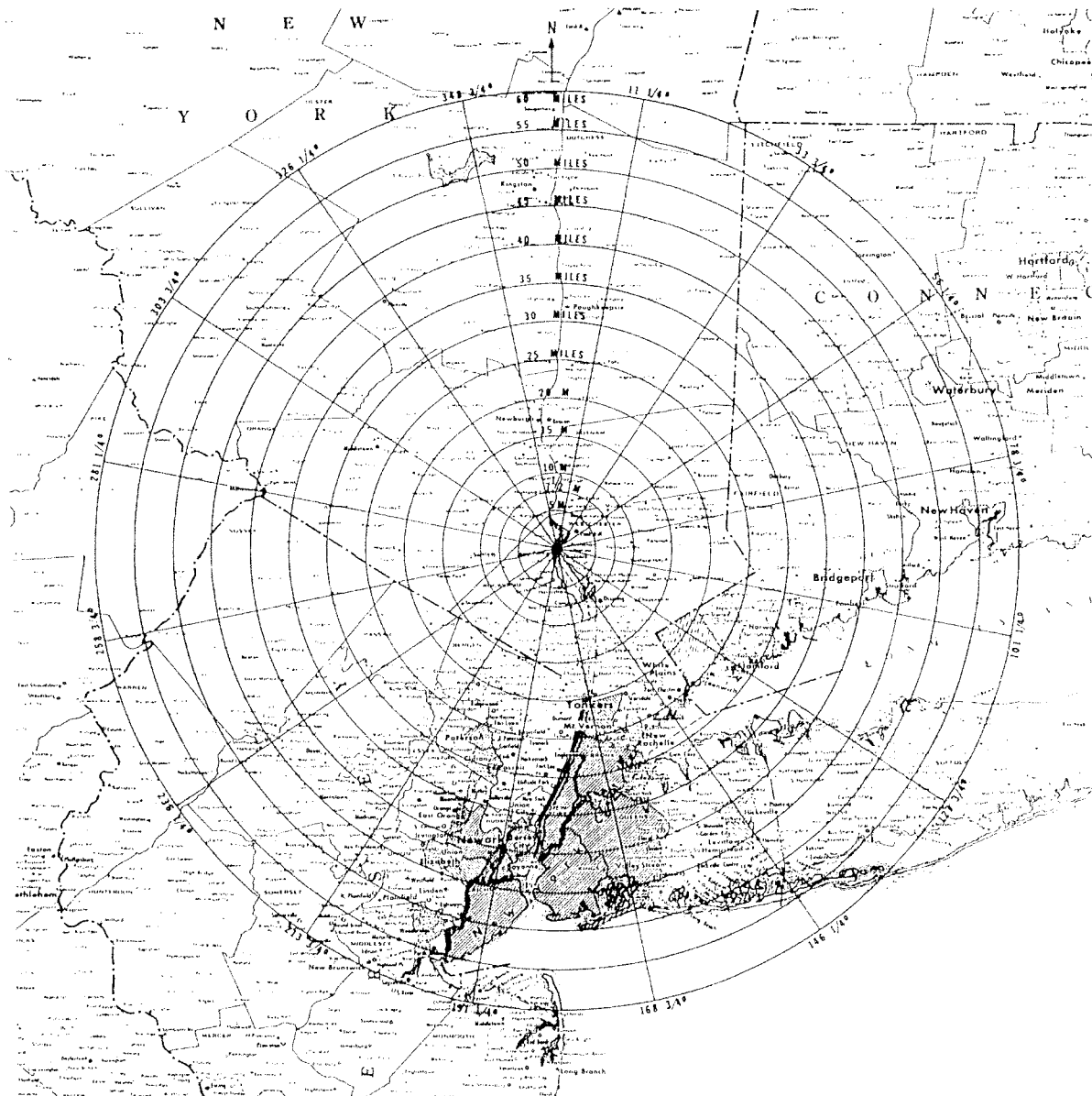
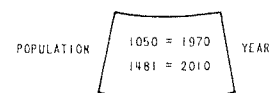
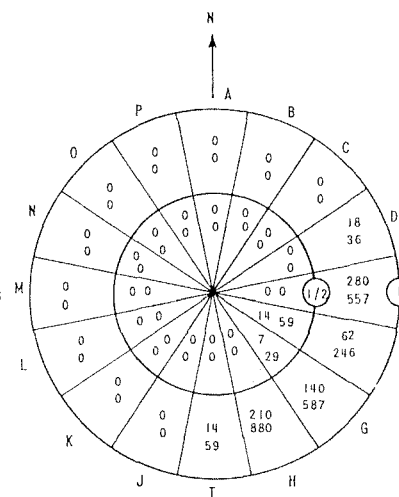
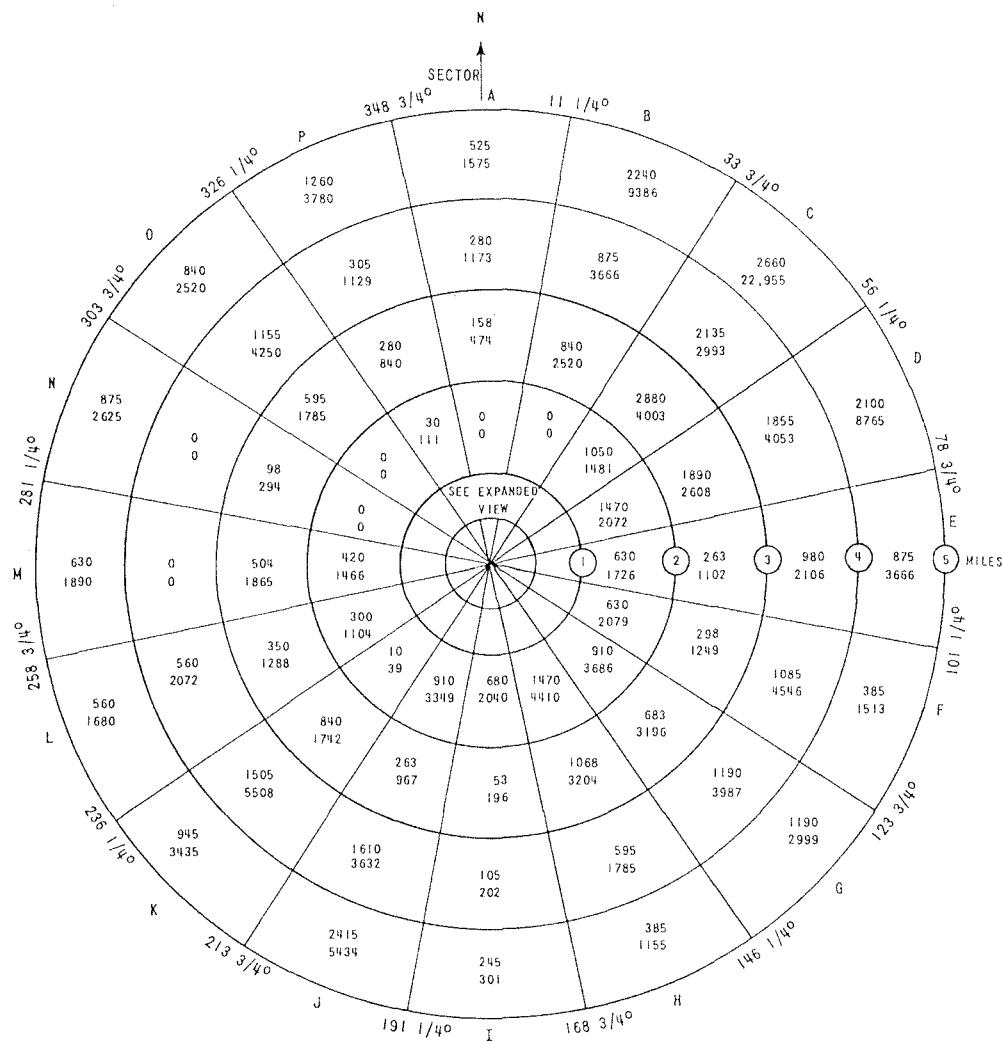


FIGURE NO. 2.2-4

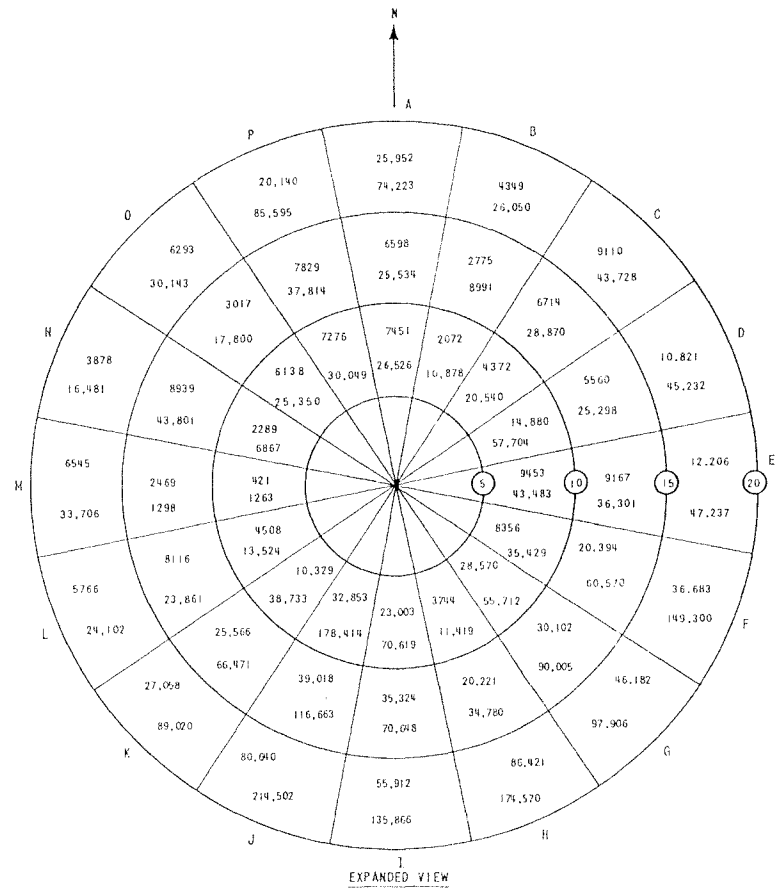
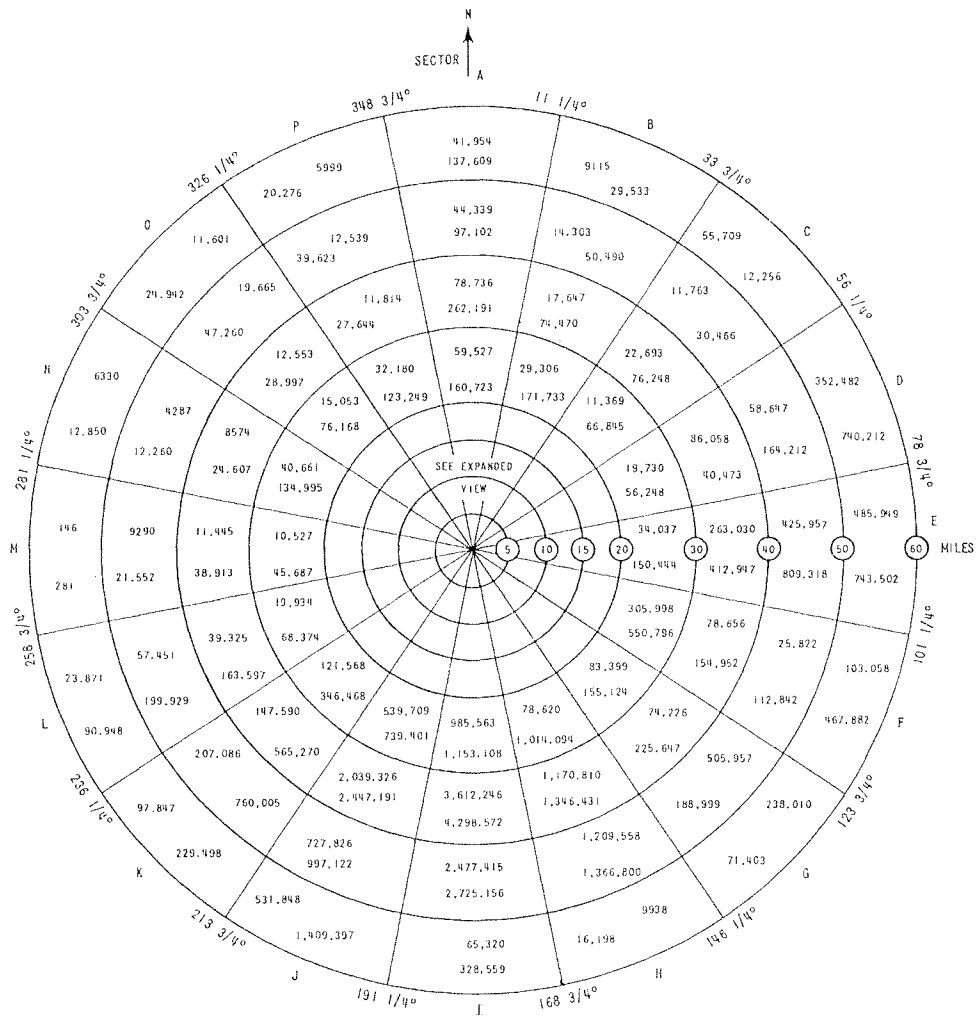




INDIAN POINT 3		FSAR UPDATE	
POPULATION GRID 60 MILE RADIUS MAY 1970 REPORT			
REV 0	JULY, 1982	FIGURE NO.	2.4-2



INDIAN POINT 3		FSAR UPDATE	
POPULATION DISTRIBUTION 5 MILE RADIUS BASED ON JUNE 1972 REPORT			
REV. 0	JULY, 1982	FIGURE NO.	2.4-3



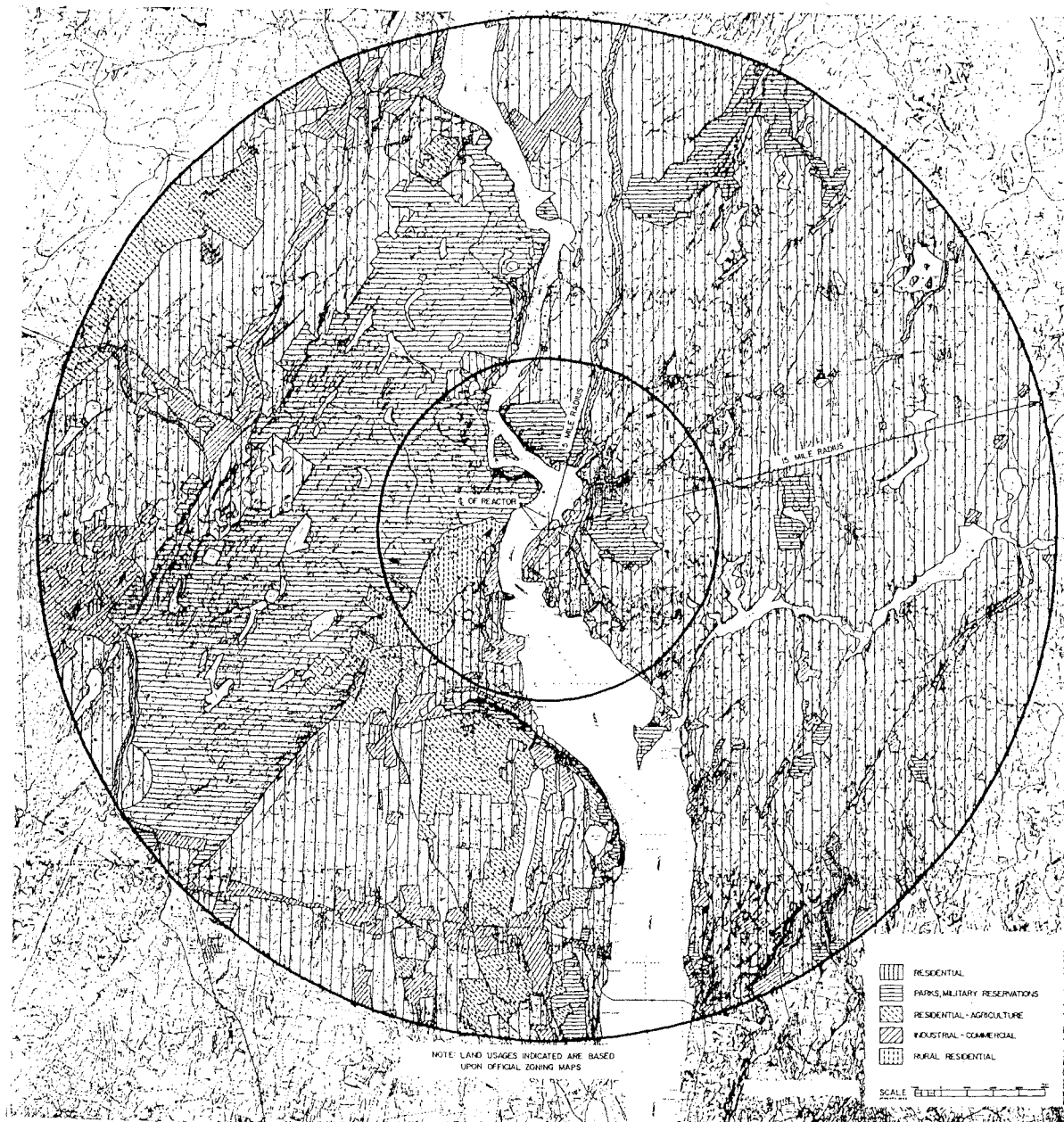
POPULATION

3744 = 1970

11,419 = 2010

YEAR

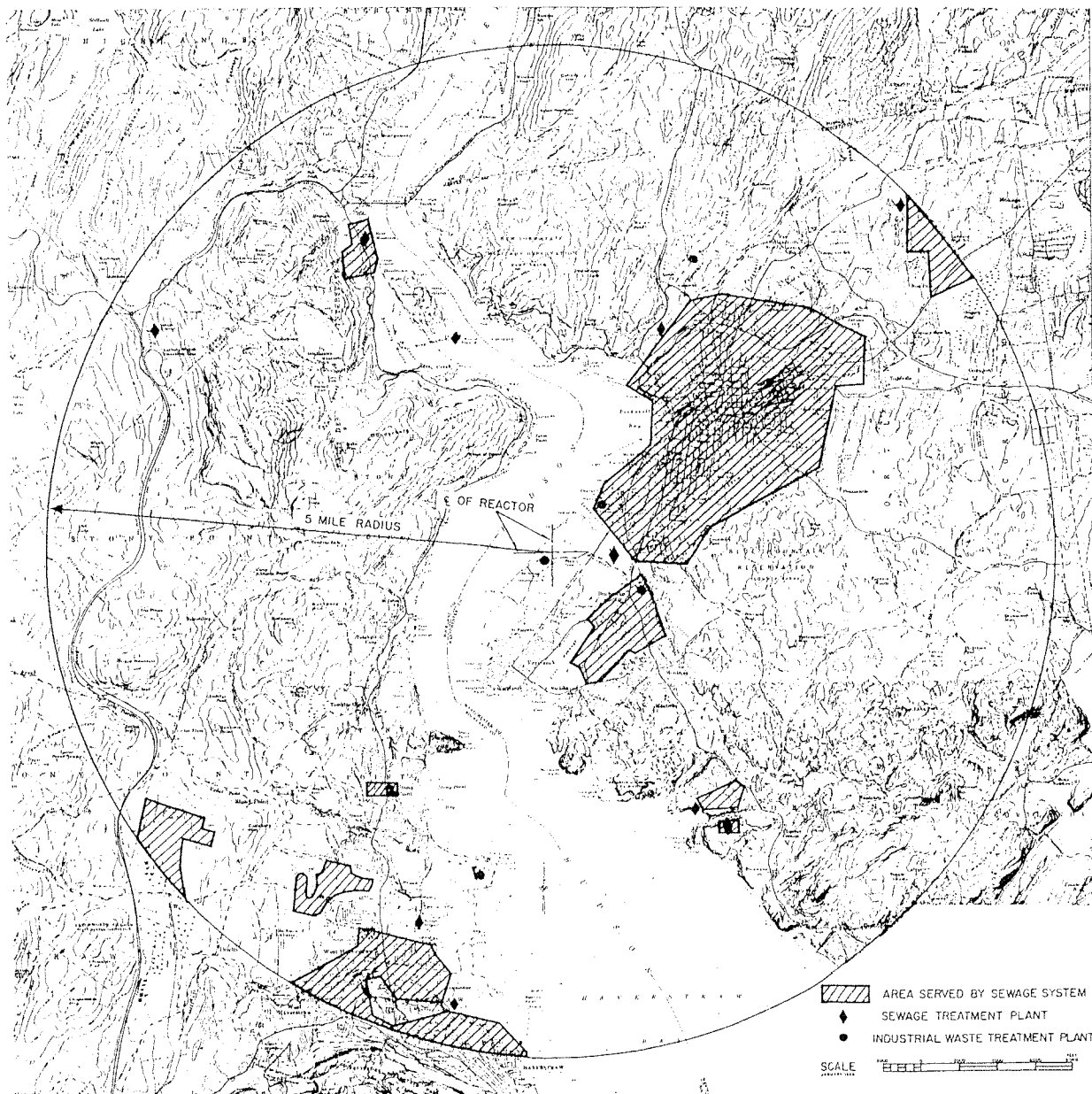
INDIAN POINT 3		FSAR UPDATE	
POPULATION DISTRIBUTION 60 MILE RADIUS (1970, 2010) JULY 1972 REPORT			
REV 0	JULY, 1982	FIGURE NO.	2 4-4



INDIAN POINT 3		FSAR UPDATE	
LAND USAGE (15 MILE RADIUS)			
REV 0	JULY, 1982	FIGURE NO.	2.4-6



INDIAN POINT 3		FSAR UPDATE
PUBLIC UTILITIES		
REV 0	JULY, 1982	FIGURE NO. 2.4-7



INDIAN POINT 3		FSAR UPDATE	
SEWAGE SYSTEMS			
REV 0	JULY, 1982	FIGURE NO.	2.4-B