

INTEGRATED MATERIALS PERFORMANCE EVALUATION PROGRAM  
QUESTIONNAIRE

**Reporting Period:**

- 1. December 14, 2017 – September 19, 2019 Technical Quality of Incidents and Allegation Activities and Compatibility Requirement.**
- 2. August 1, 2015 – September 13, 2019: all other indicators**

Note: If there has been no change in the response to a specific question since the last IMPEP questionnaire, the State or Region may copy the previous answer, if appropriate.

**A. GENERAL**

1. Please prepare a summary of the status of the State's or Region's actions taken in response to each of the open recommendations from previous IMPEP reviews.

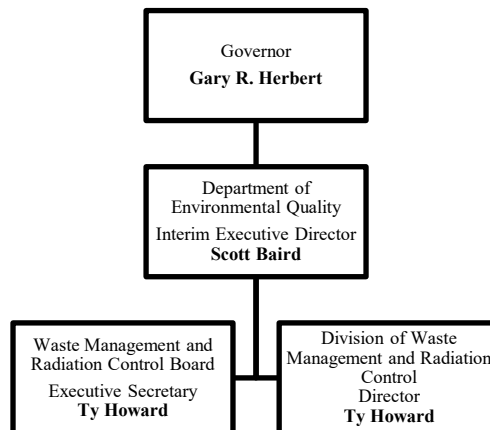
All recommendations from the 2015 IMPEP review were acted on and were addressed in the 2017 periodic review and report. No open recommendations currently exist.

**B. COMMON PERFORMANCE INDICATORS**

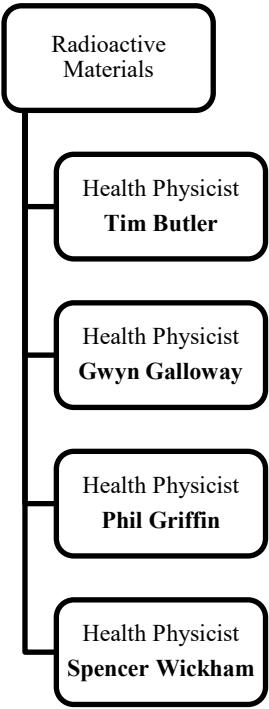
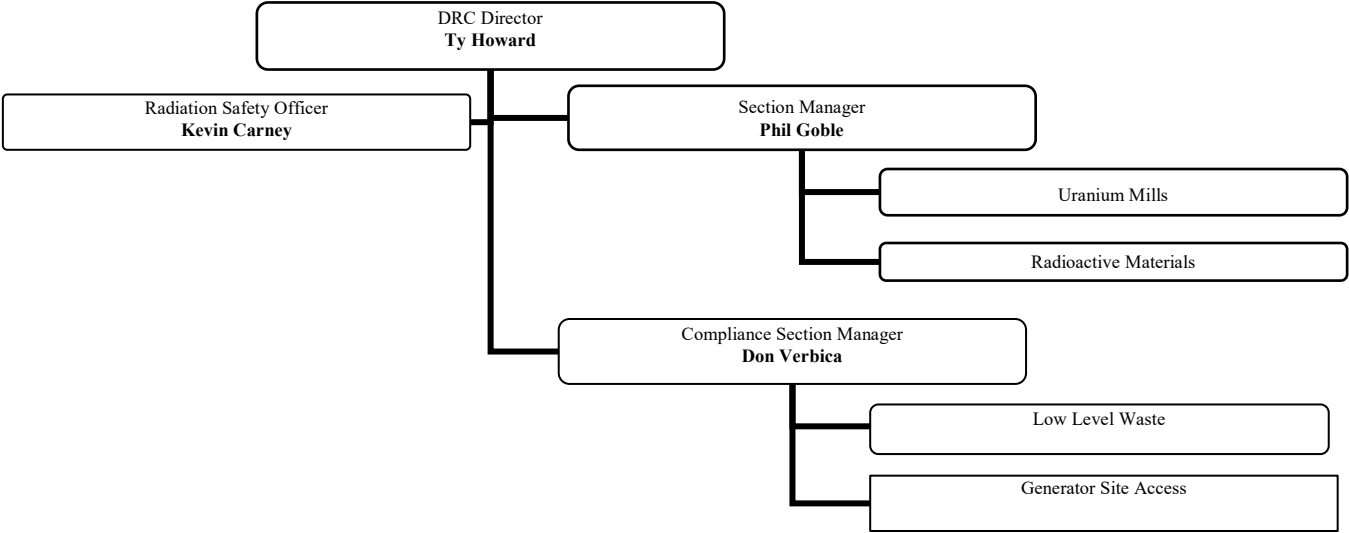
**I. Technical Staffing and Training**

2. Please provide the following organization charts, including names and positions:

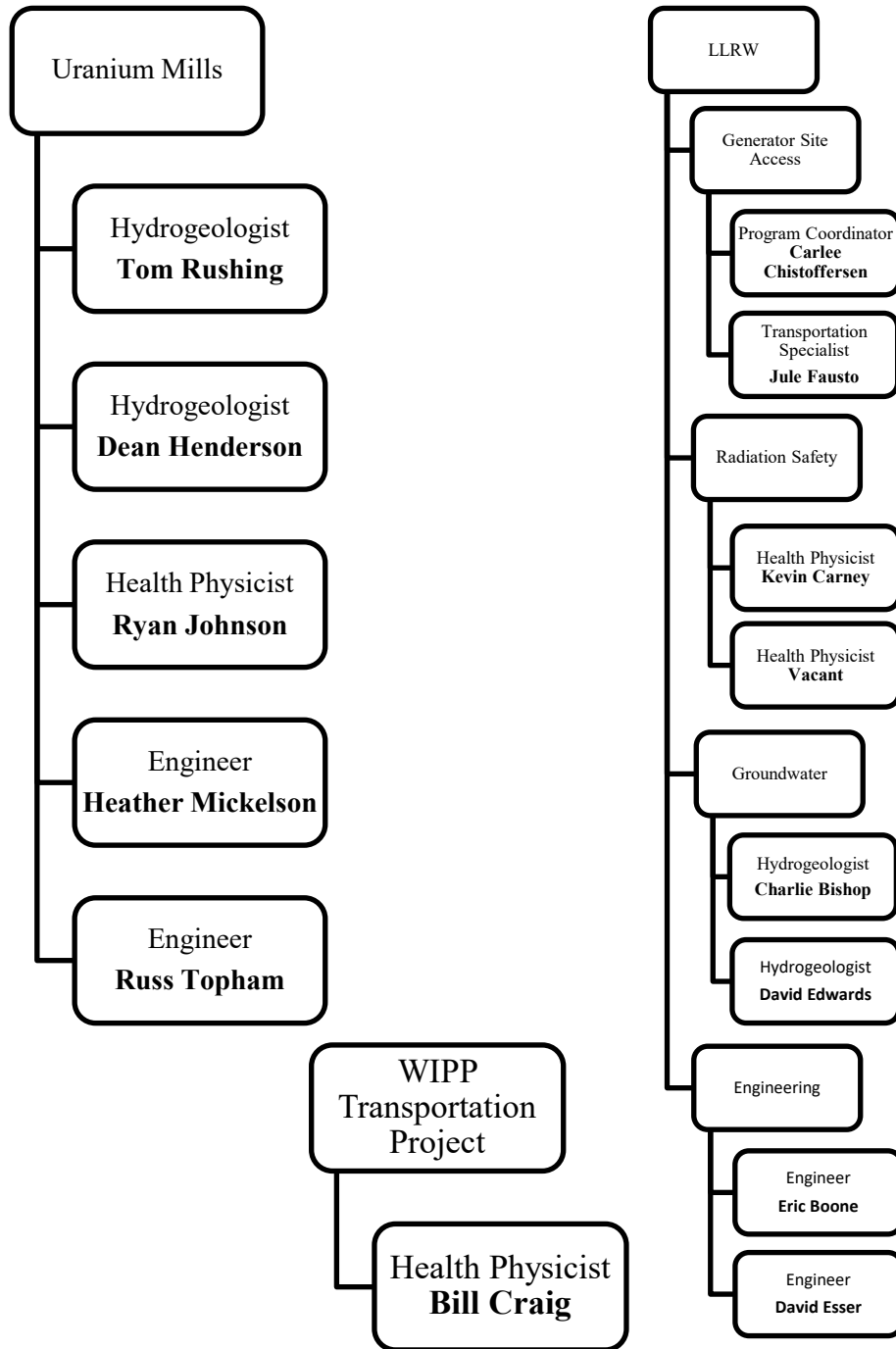
- (a) A chart showing positions from the Governor down to the Radiation Control Program Director;



<sup>1</sup> Estimated burden per response to comply with this voluntary collection request: 53 hours. Forward comments regarding burden estimate to the Records Management Branch (T-5 F52), U.S. Nuclear Regulatory Commission, Washington, DC 20555-0001, and to the Paperwork Reduction Project (3150-0183), Office of Management and Budget, Washington, DC 20503. If an information collection does not display a currently valid OMB control number, NRC may not conduct or sponsor, and a person is not required to respond to, the information collection.



- (c) Equivalent charts for sealed source and device evaluation, low-level radioactive waste and uranium recovery programs, if applicable.



3. Please provide a staffing plan, or complete a listing using the suggested format below, of the professional (technical) full-time equivalents (FTE) applied to the radioactive materials program by individual. Include the name, position, and, for Agreement States, the fraction of time spent in the following areas: administration, materials licensing & compliance, emergency response, low-level radioactive waste, uranium recovery, other. If these regulatory responsibilities are divided between offices, the table should be consolidated to include all personnel contributing to the radioactive materials program.