



Northern Indiana Public Service Company

Nuclear Staff
RR # 3, Box 501
Chesterton, IN 46304
October 26, 1979

BAILLY GENERATING STATION N-1

Mr. Ronald Ballard
Environmental Projects Branch No. 1
Directorate of Licensing
U.S. Nuclear Regulatory Commission
Washington, D.C. 20545

RE: NORTHERN INDIANA PUBLIC SERVICE COMPANY
BAILLY GENERATING STATION NUCLEAR 1
DOCKET 50-367

Dear Mr. Ballard:

Enclosed herewith are ten (10) copies of the following:

1. Well Charts for 10/10/79 - 10/16/79
2. Bailly Wells Without Recorders for 10/17/79
3. Pond Levels for 10/17/79
4. Pneumatic Pressure Transducers for 10/16/79
5. Water Meter Readings for 10/16/79

Sincerely,

R. J. Bohn
Manager, Nuclear Staff

DBY:lu
DBY:lu

Enclosures

File: Ground Water Observation Mon: ing Wells

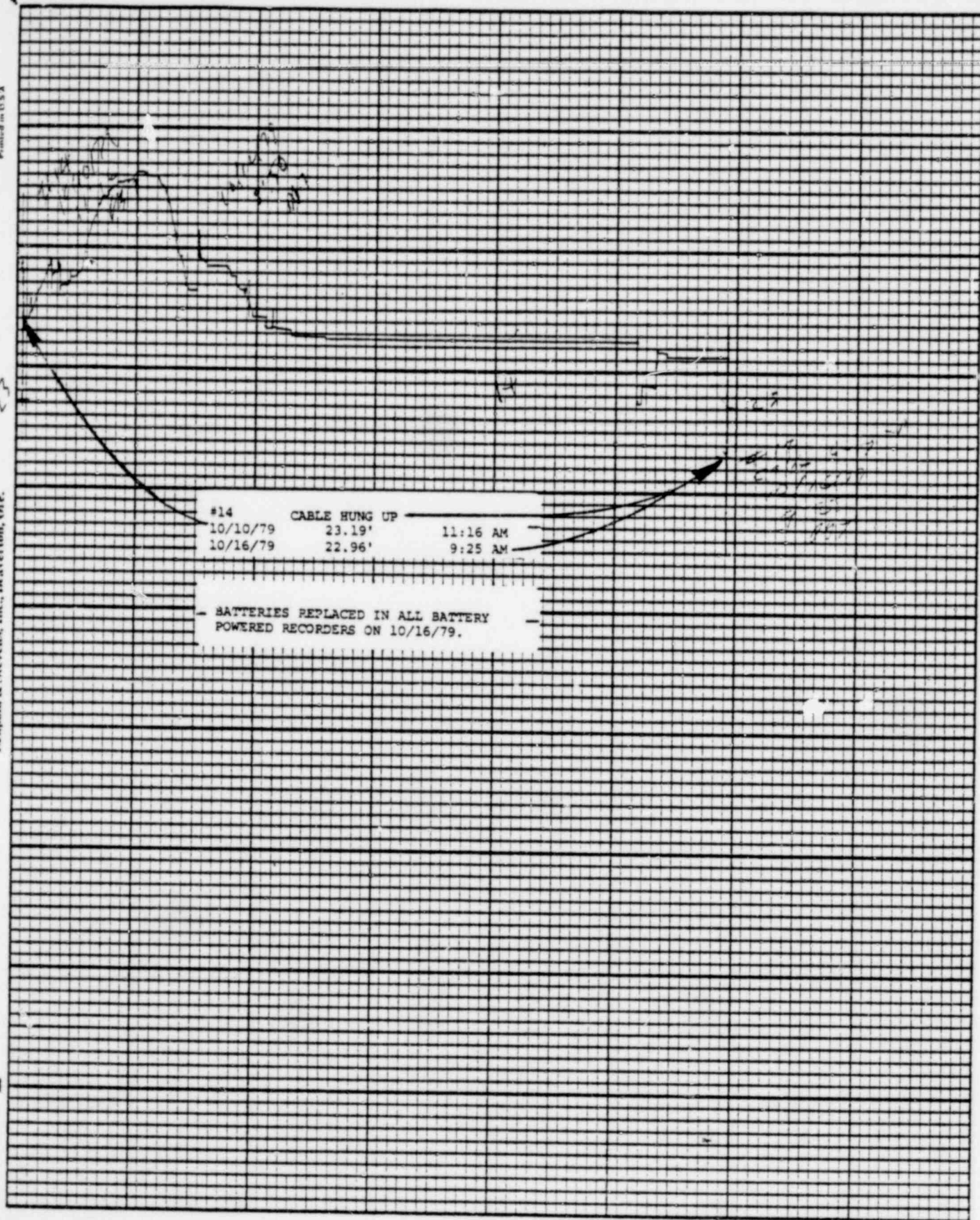
1272 219

7911060

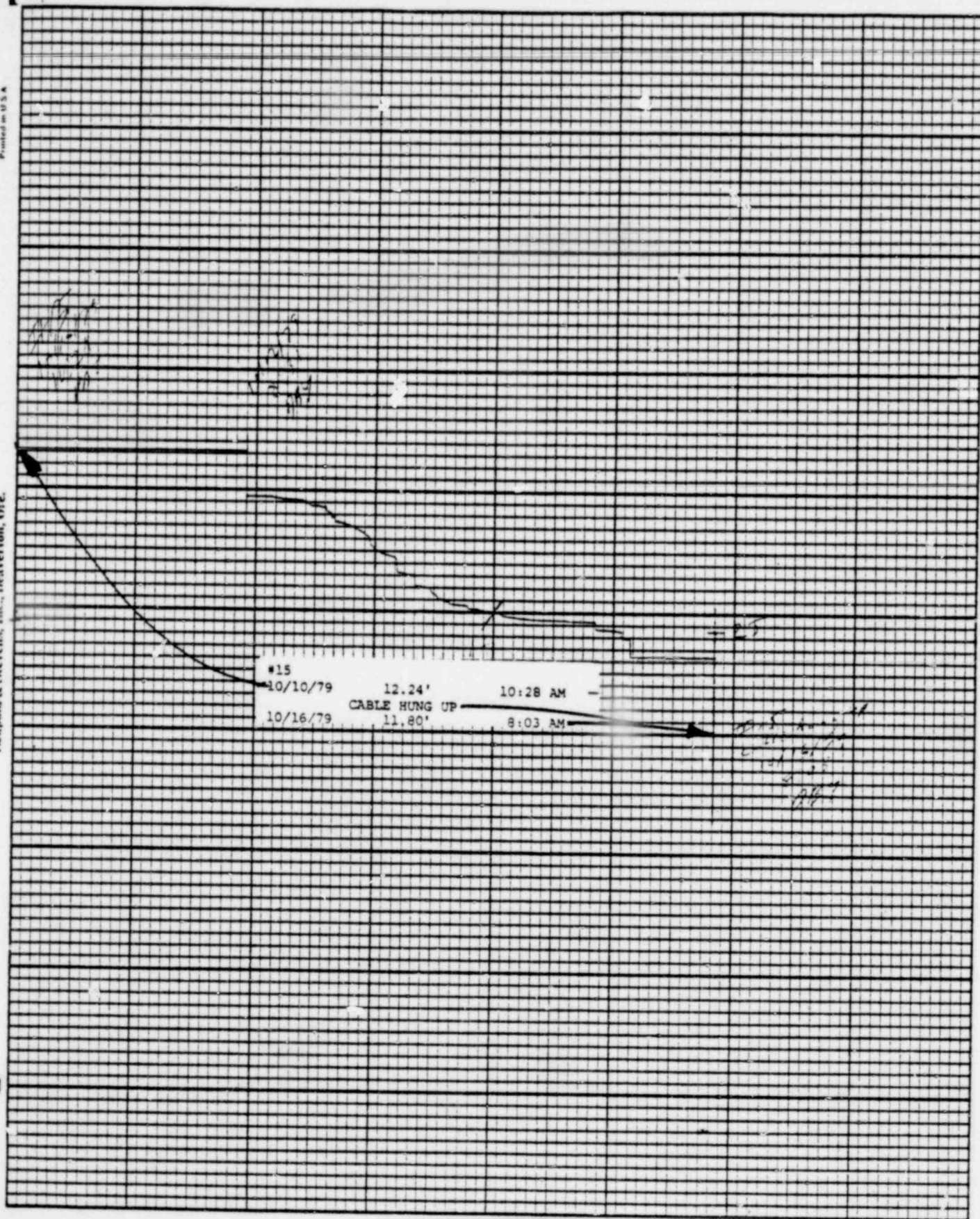
494

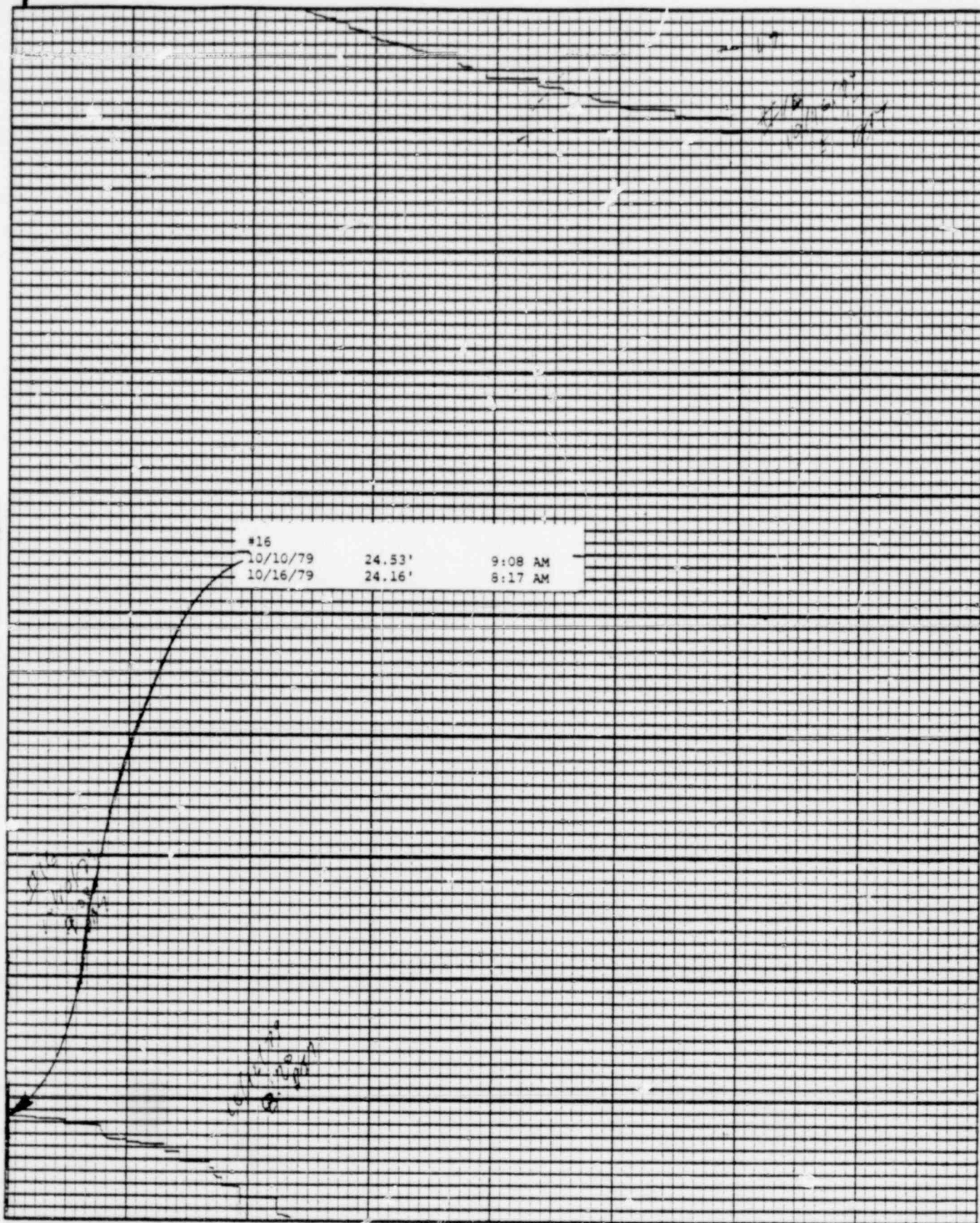
A

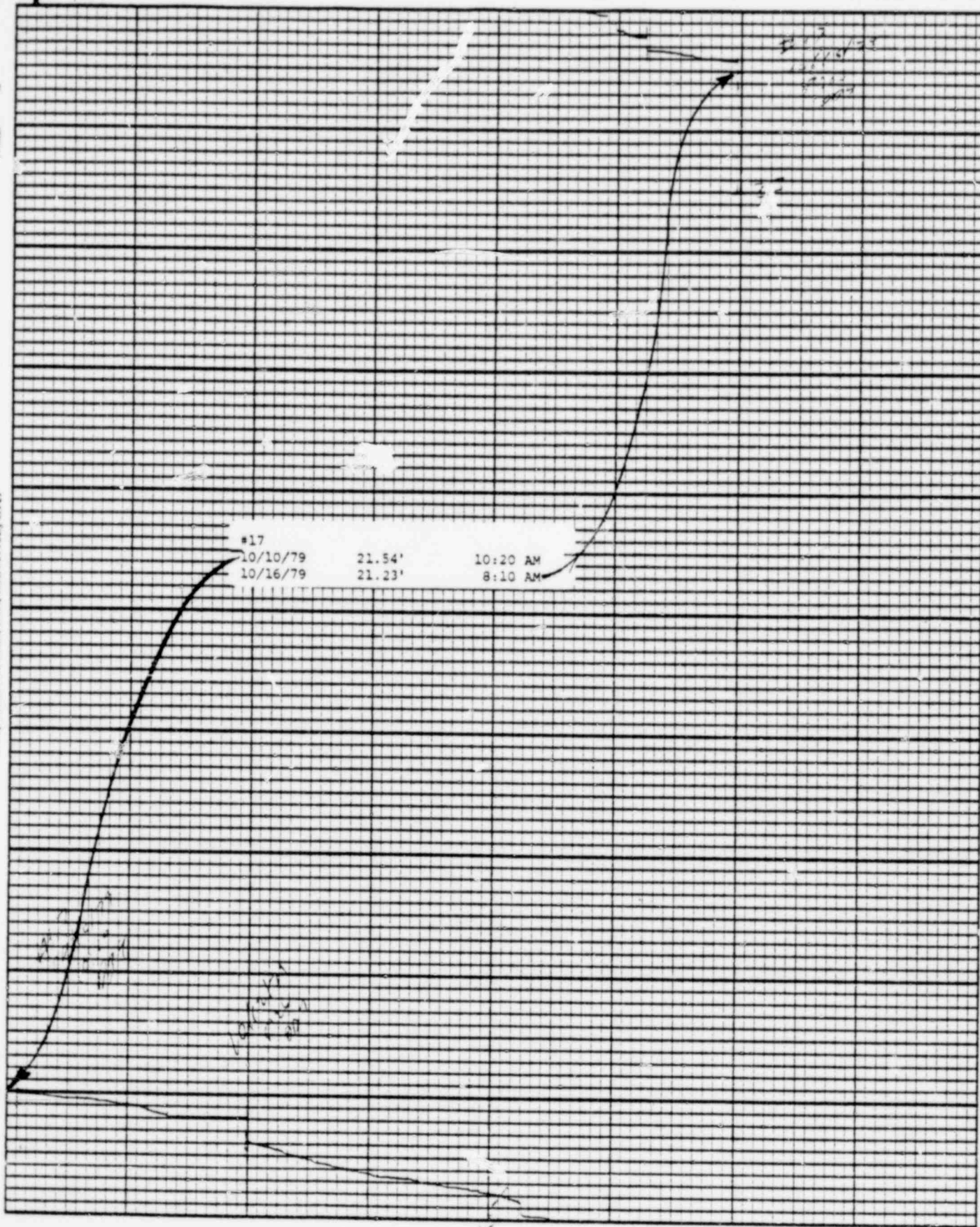
*Do not
ES-11*



1272 220







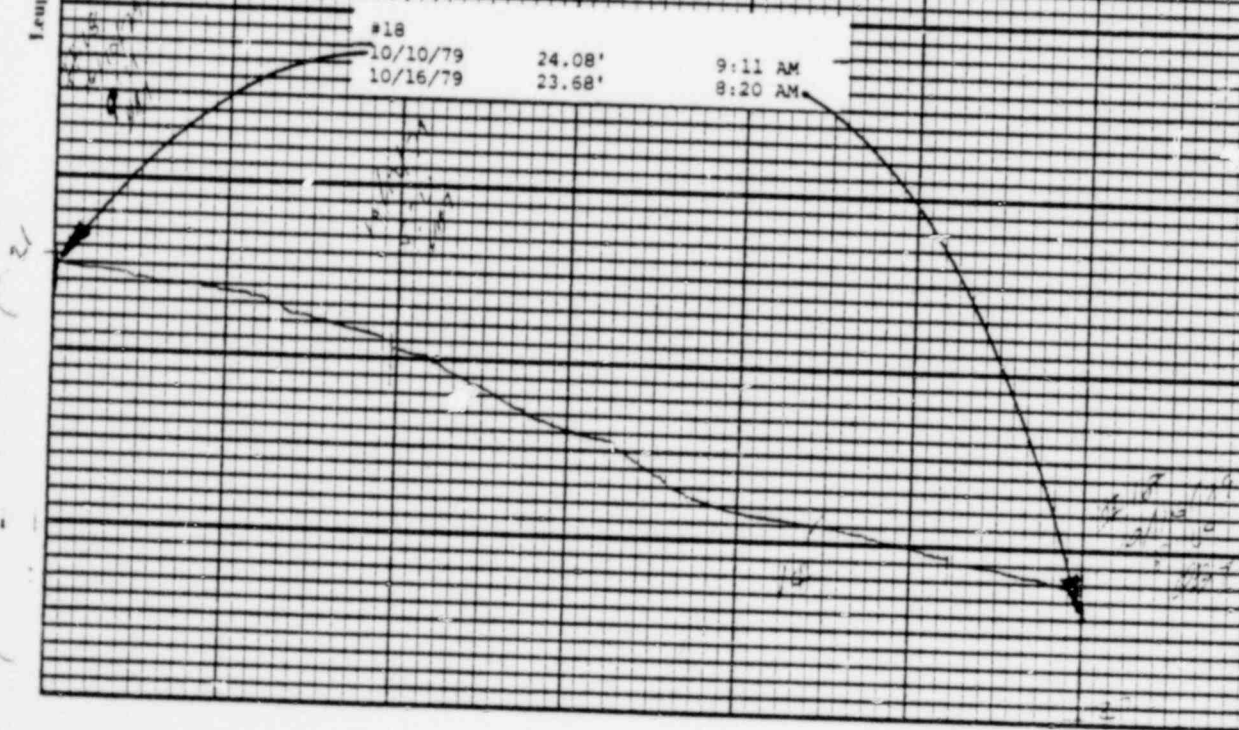
1272 223

Leupold & Stevens, Inc., Beaverton, Ore.

Printed in U.S.A.

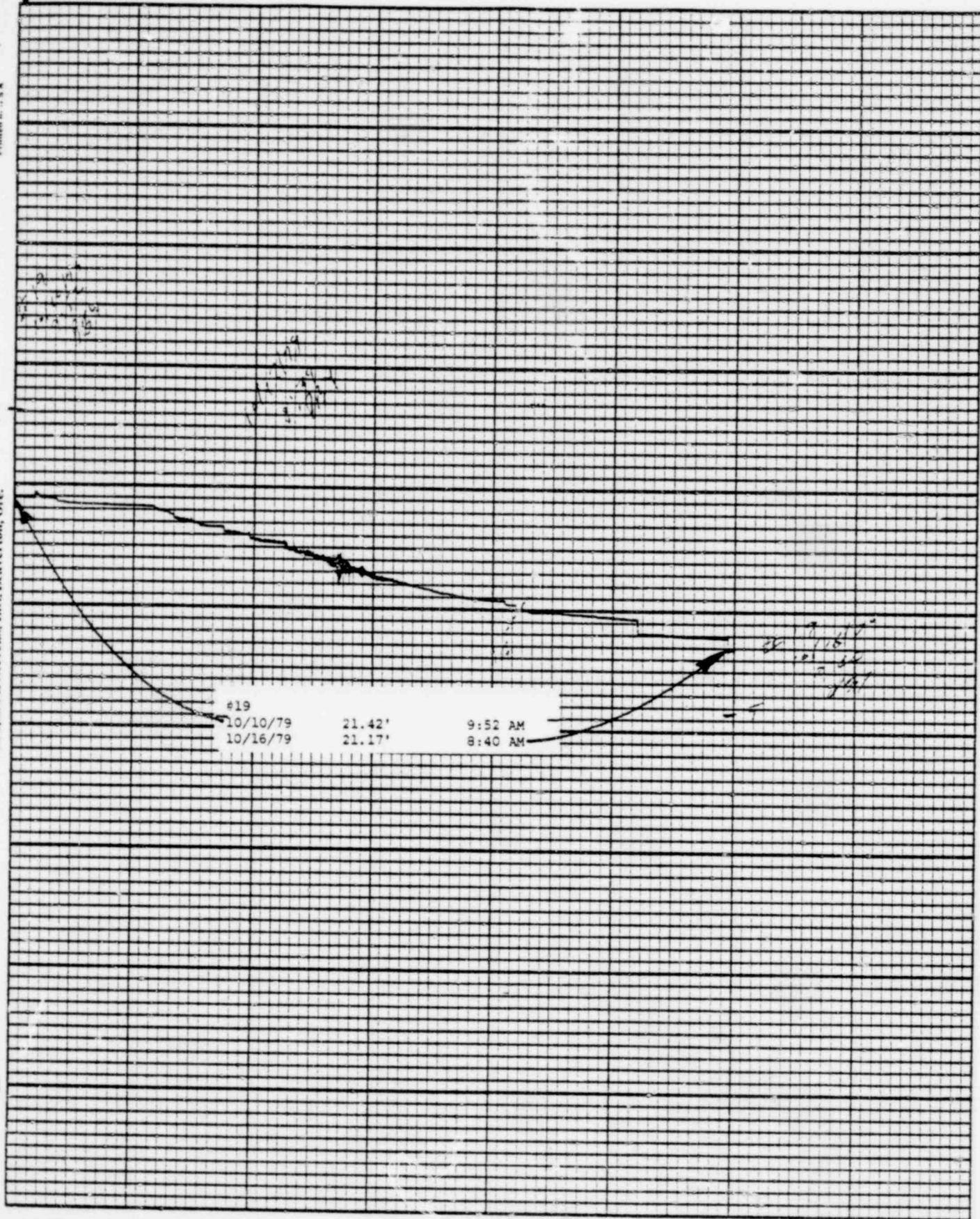
Chart P-1

Stevens Water Level Recorder — Type F



Leupold & Stevens, Inc., Beaverlton, Ore.

Stevens Water Level Recorder — Type F



1272 225

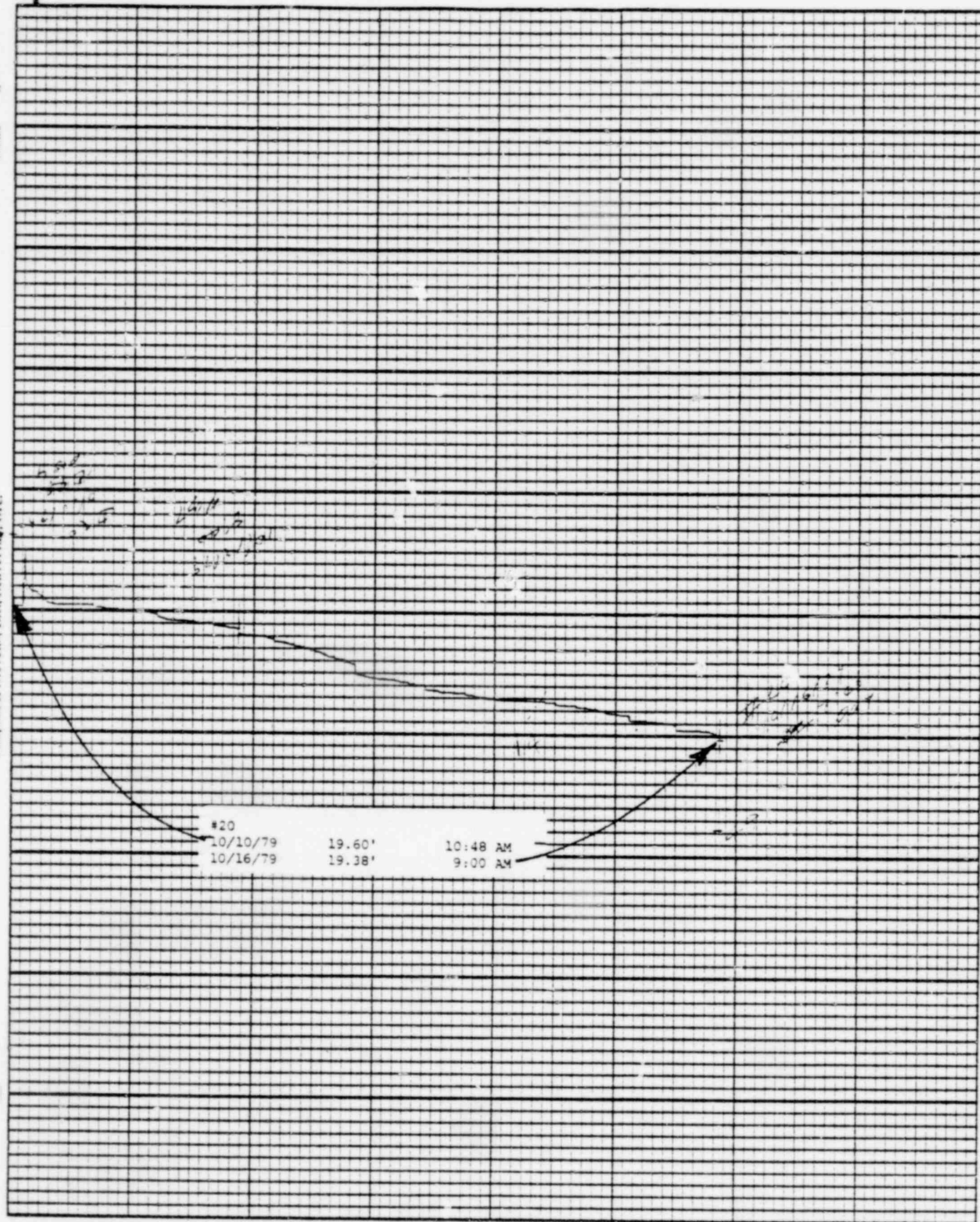
Leupold & Stevens, Inc., Beaver Falls, Pa.

Printed

Stevens Water Level Recorder — Type F



Chart F-1



1272 226

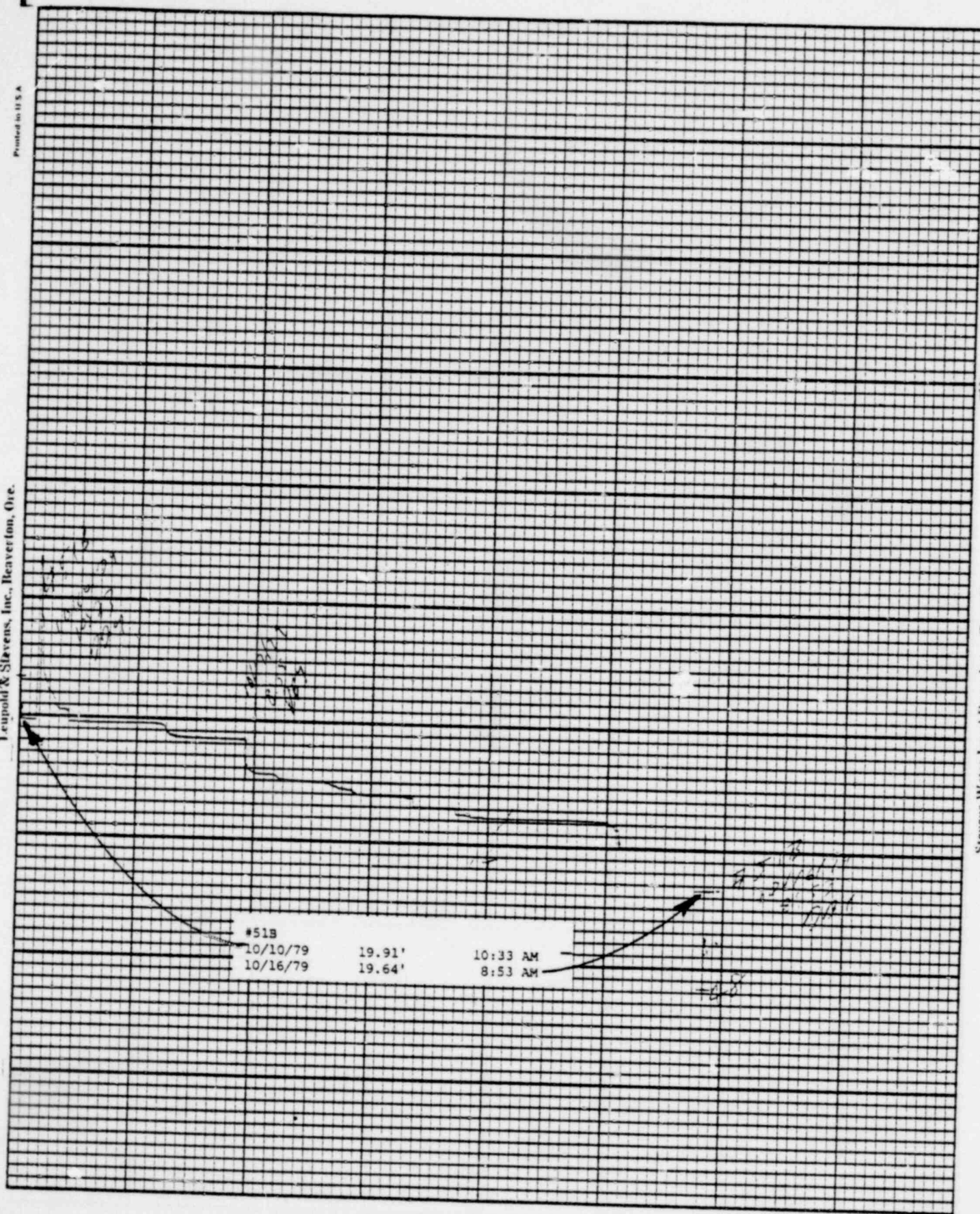
Printed in U.S.A.

Leupold & Stevens, Inc., Beaver Dam, Wis.

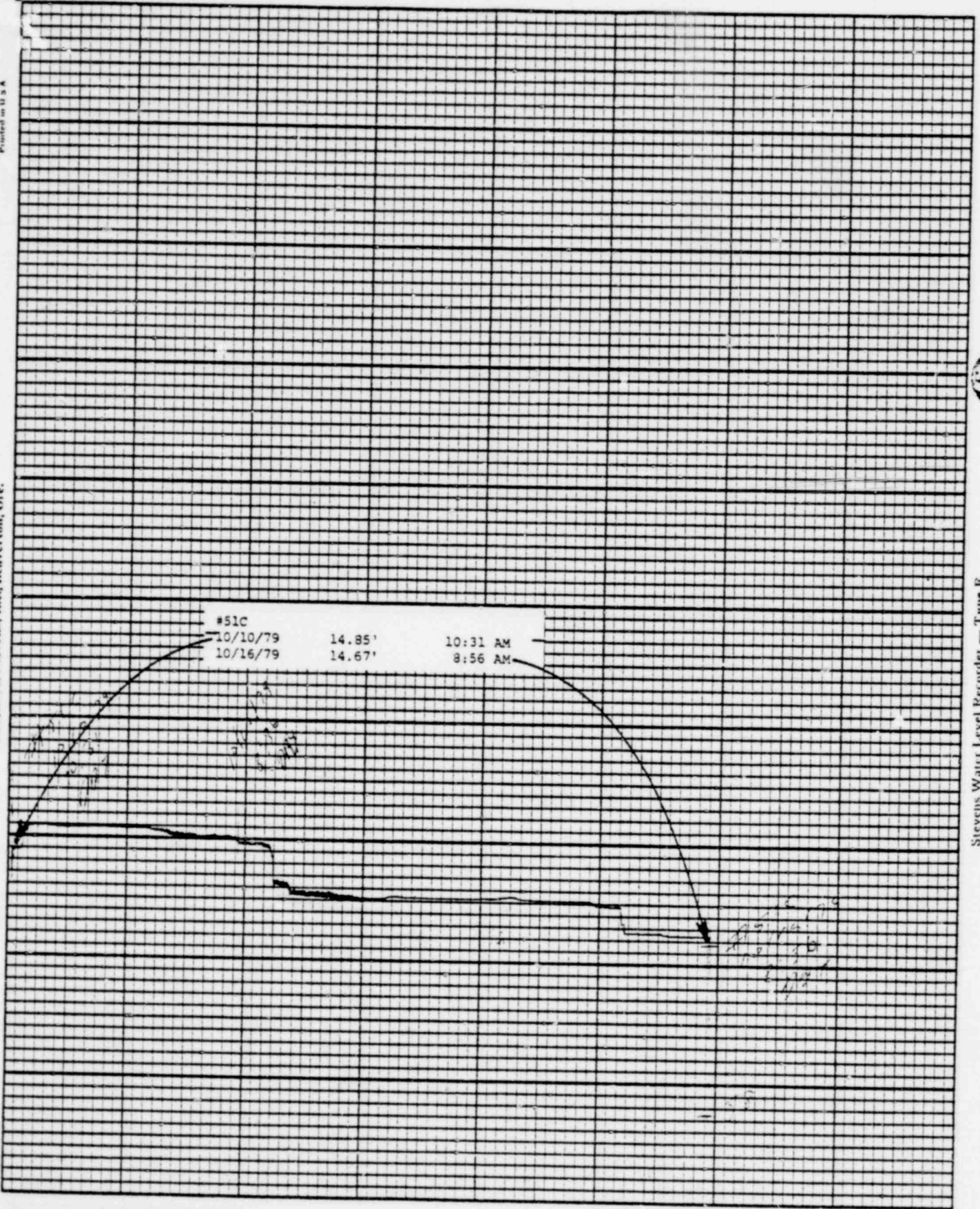
Chart F-1

Stevens Water Level Recorder — Type F

5



1272 227



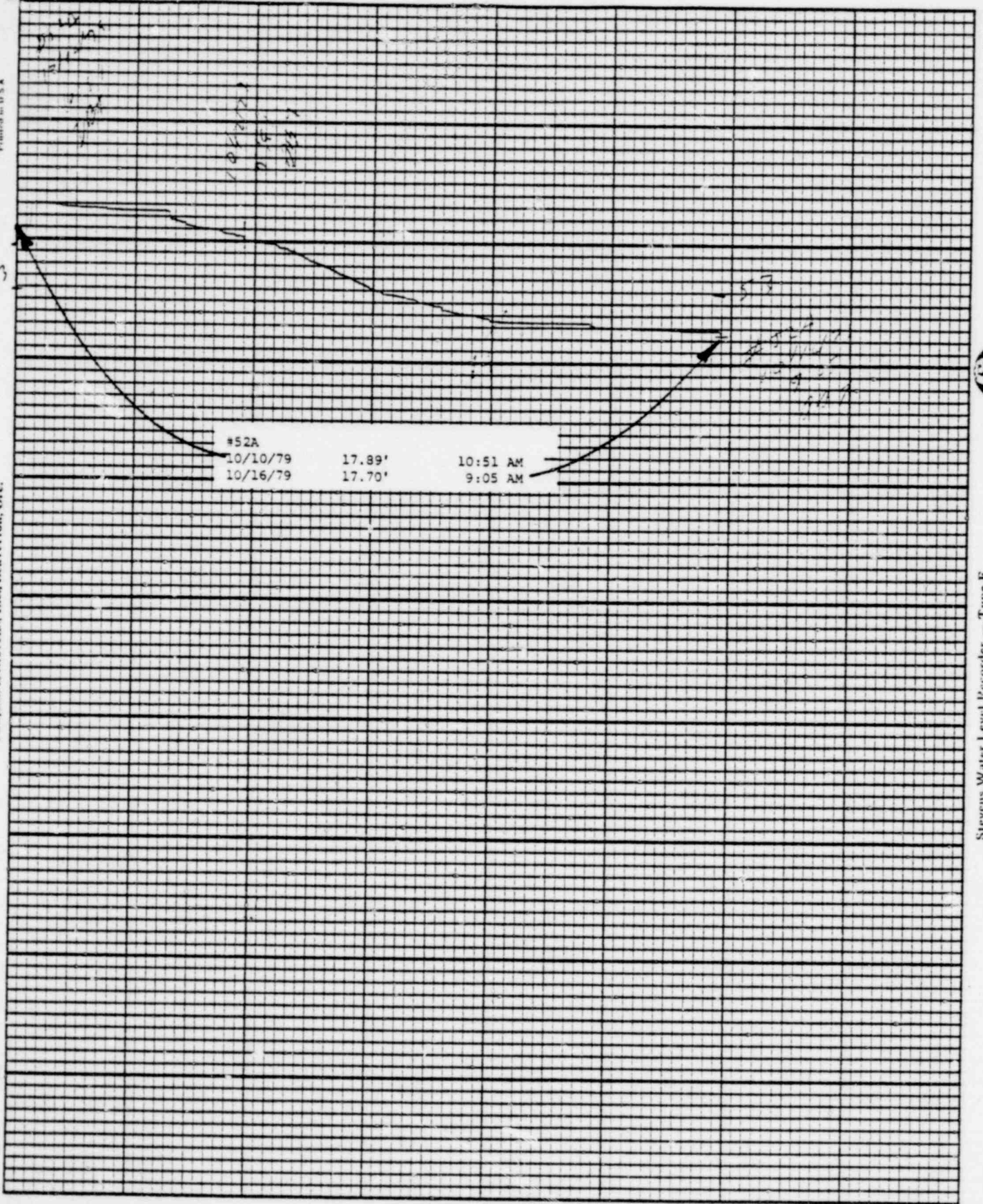
Printed in U.S.A.

Leupold & Stevens, Inc., Beaverlton, Ore.

Chart F-1



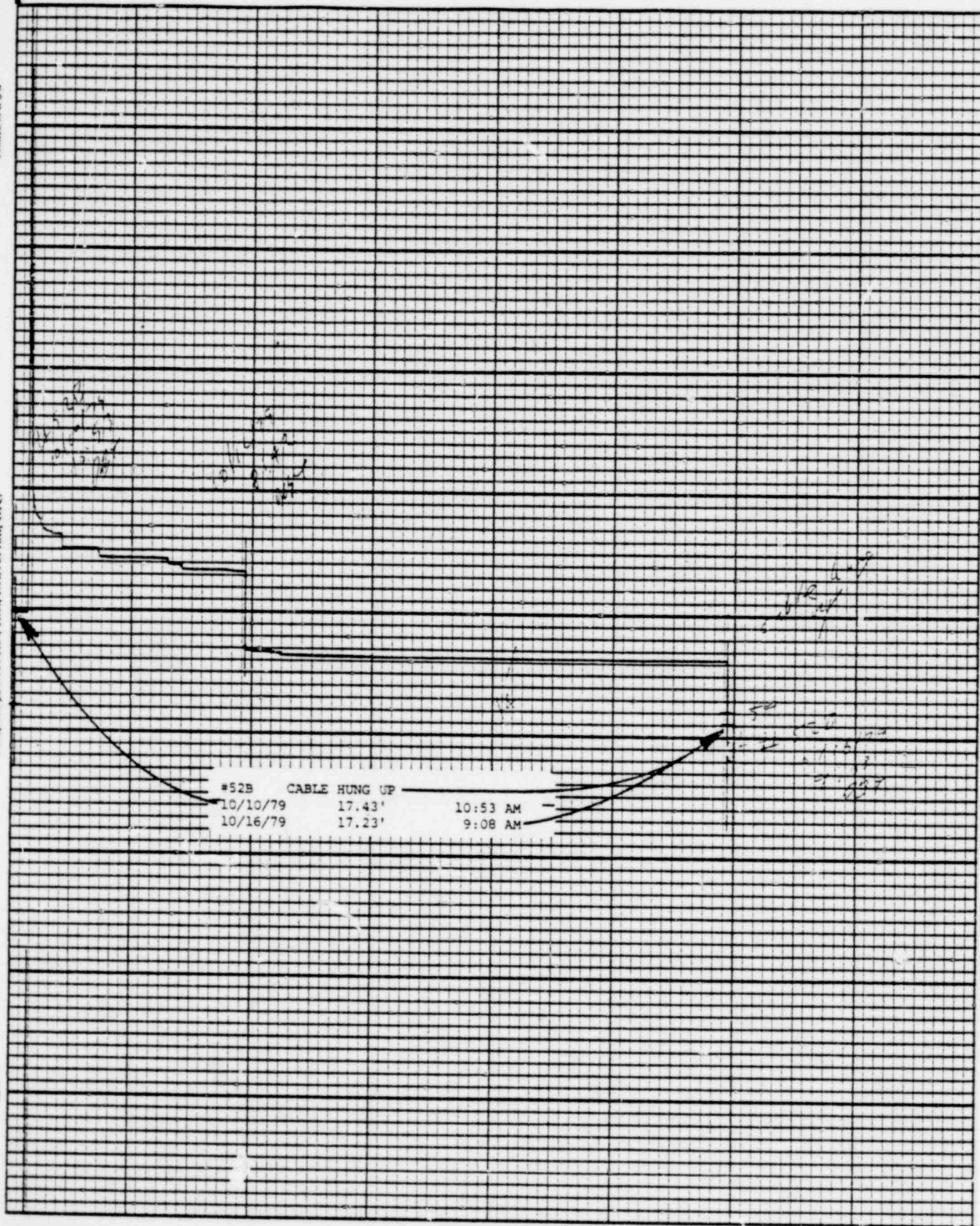
Stevens Water Level Recorder — Type F



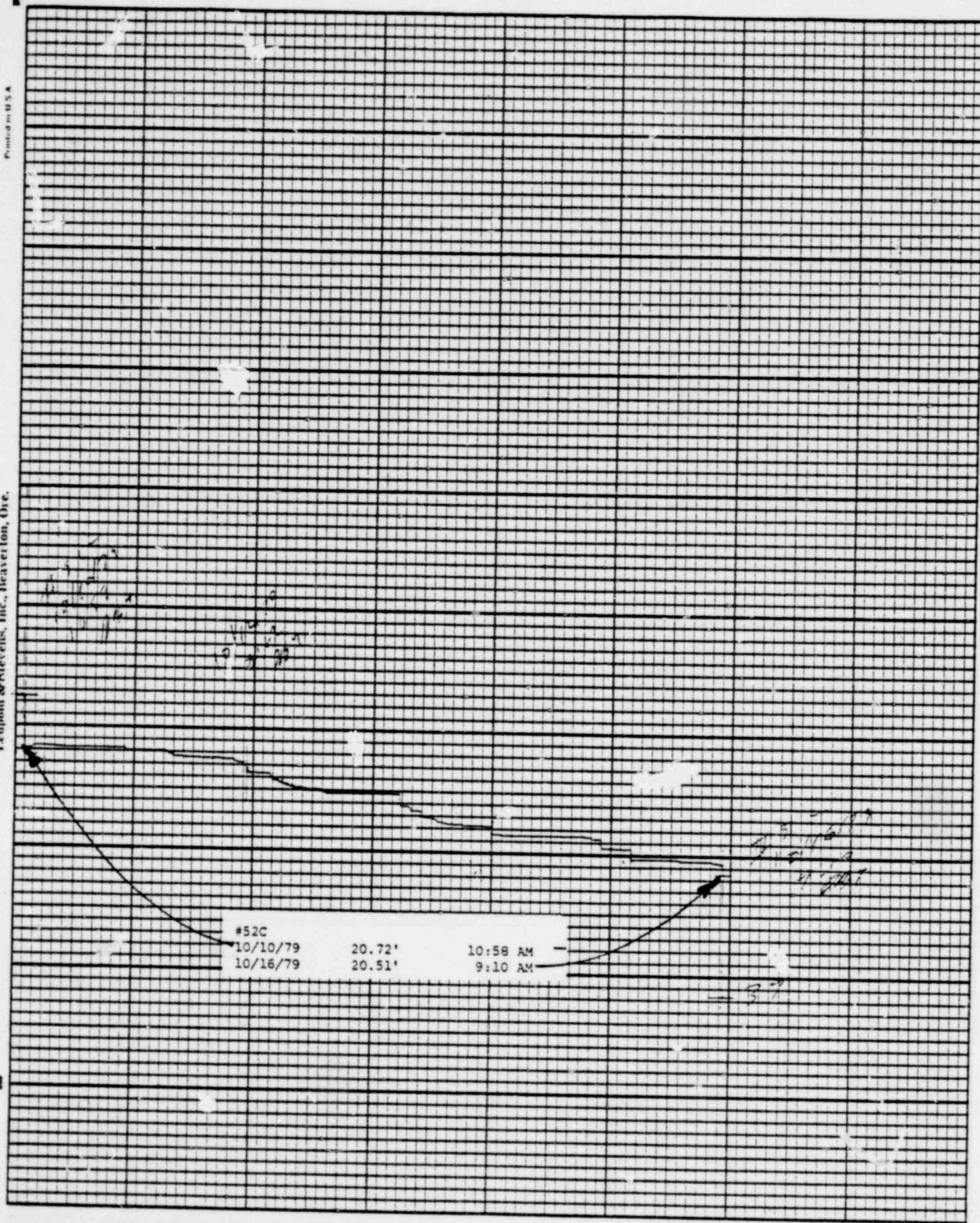
1272 229

Leupold & Stevens, Inc., Beaverlton, Ore.

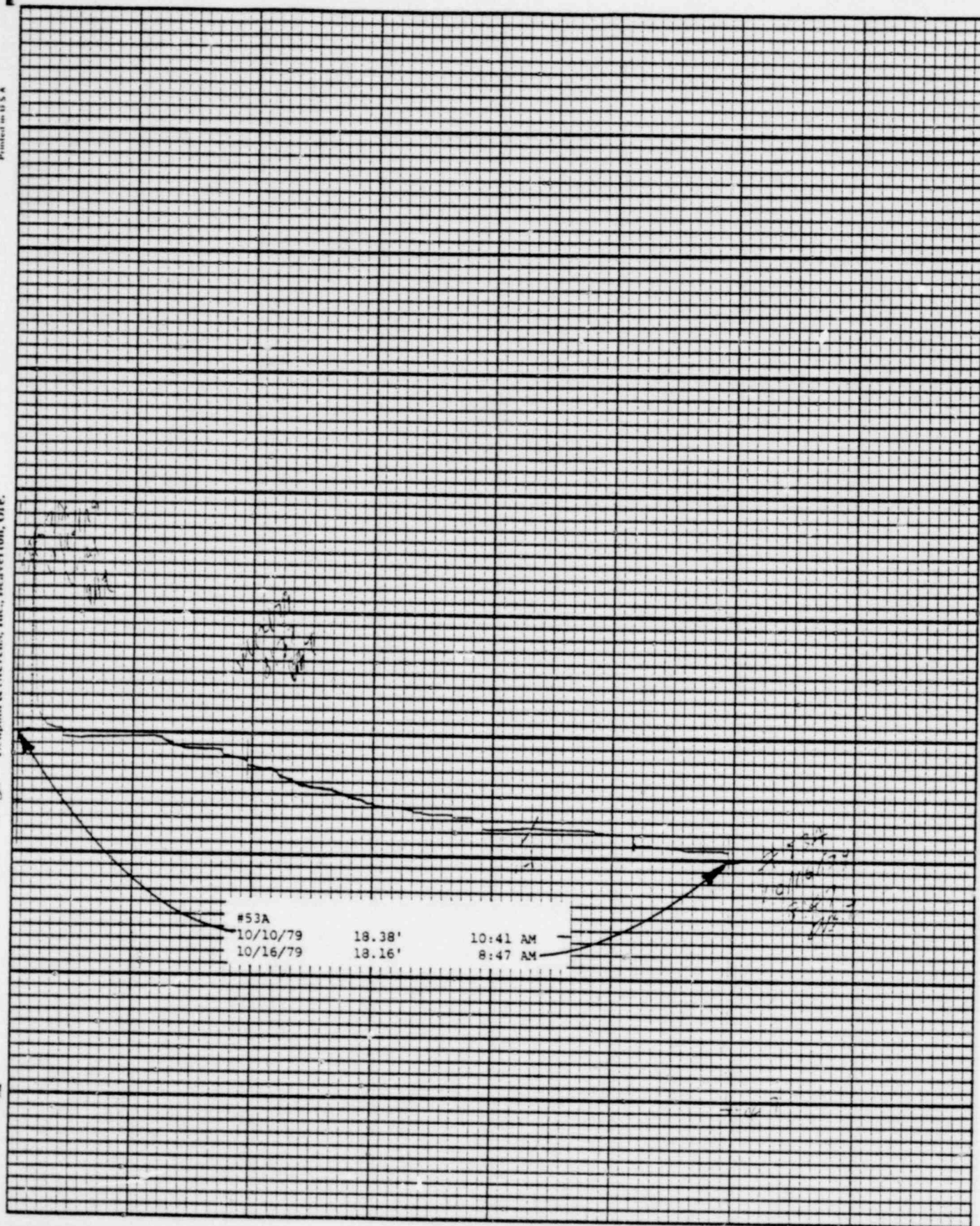
Stevens Water Level Recorder — Type F



1272 230



1272 231



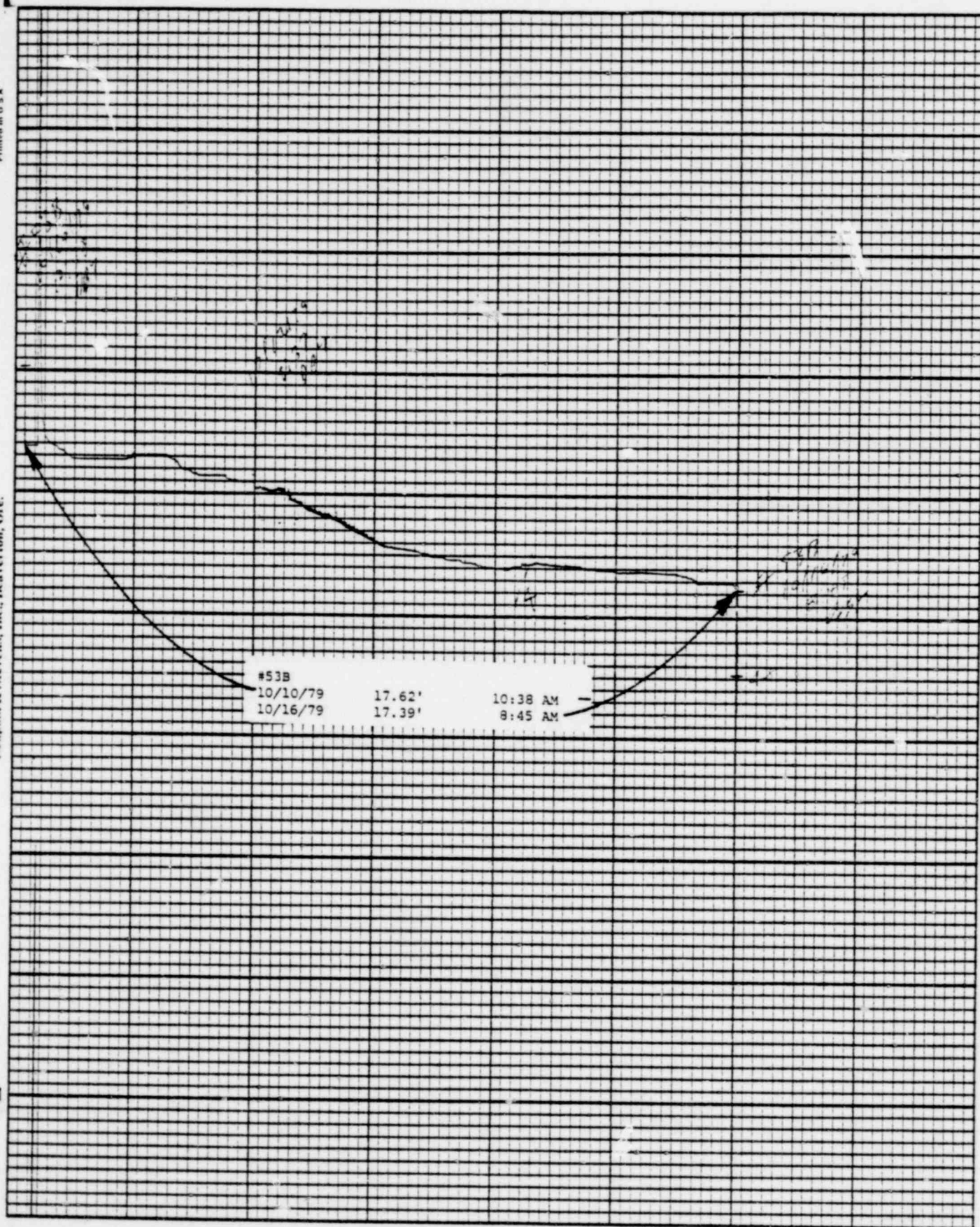
Printed in U.S.A.

Leupold & Stevens, Inc., Beaverton, Ore.

Chart F-1

(S)

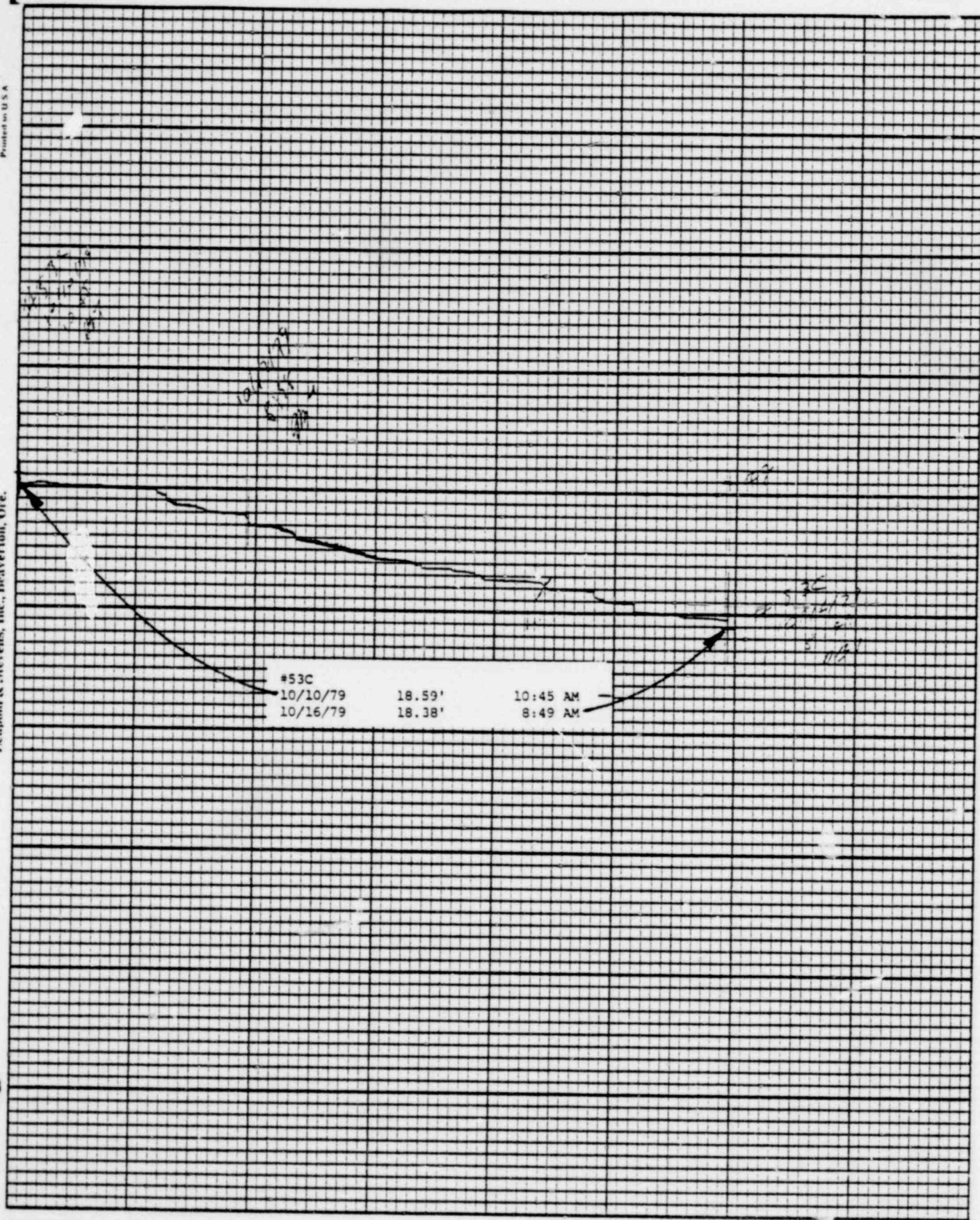
Stevens Water Level Recorder — Type F



1272 233

79

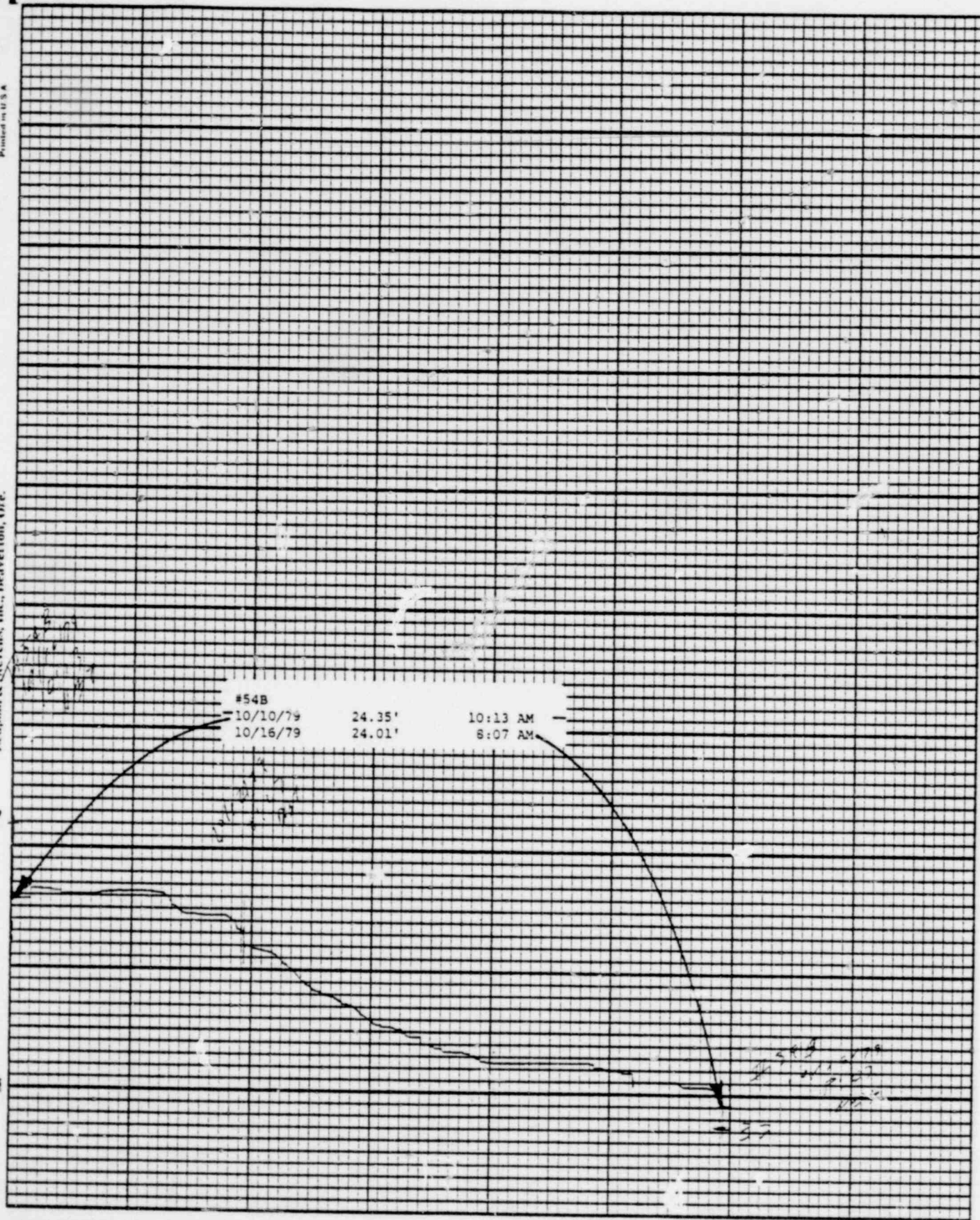
Leupold & Stevens, Inc., Beaverlton, Ore.

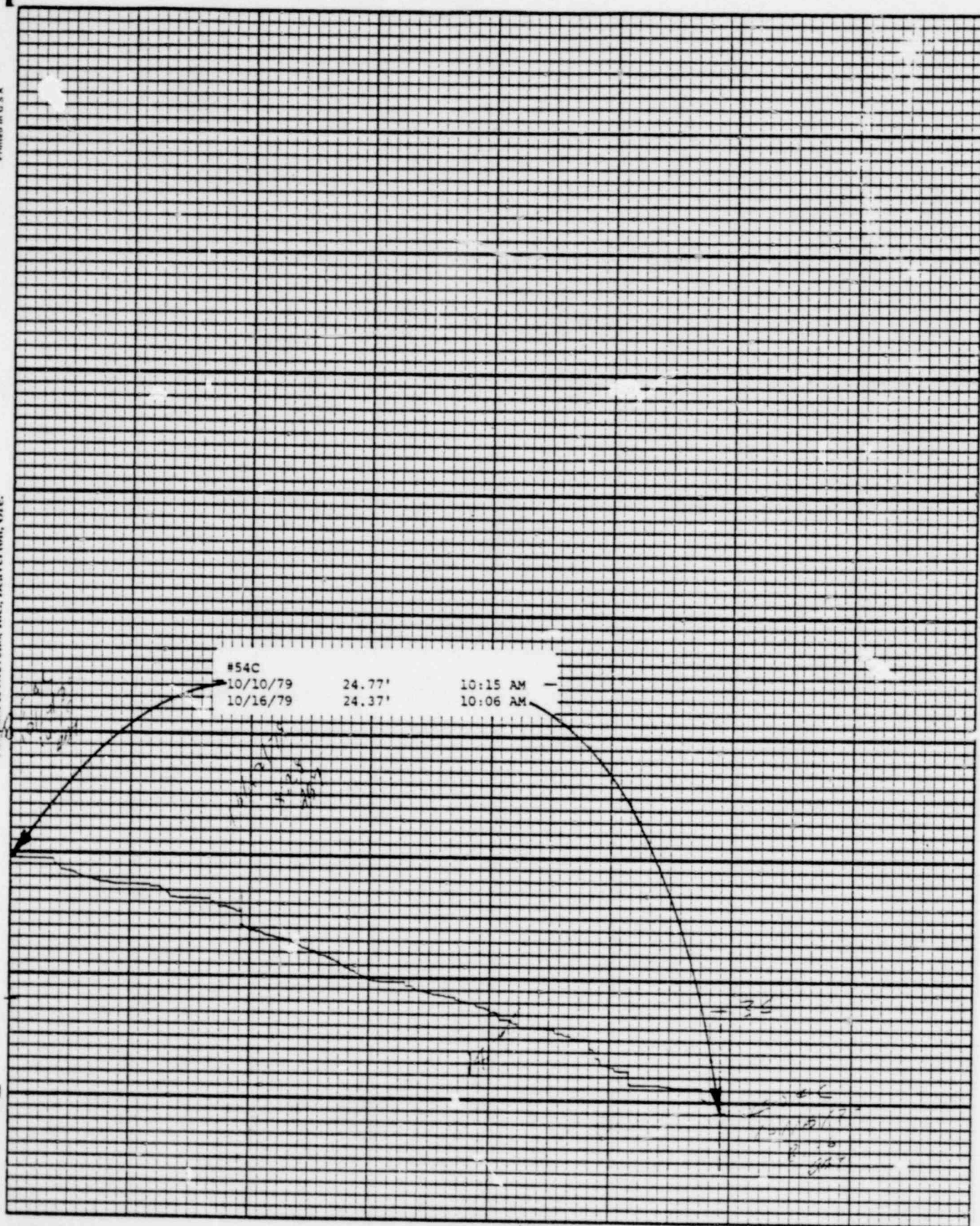


Lenz & Stevens, Inc., Beaverton, Ore.



Stevens Water Level Recorder — Type F

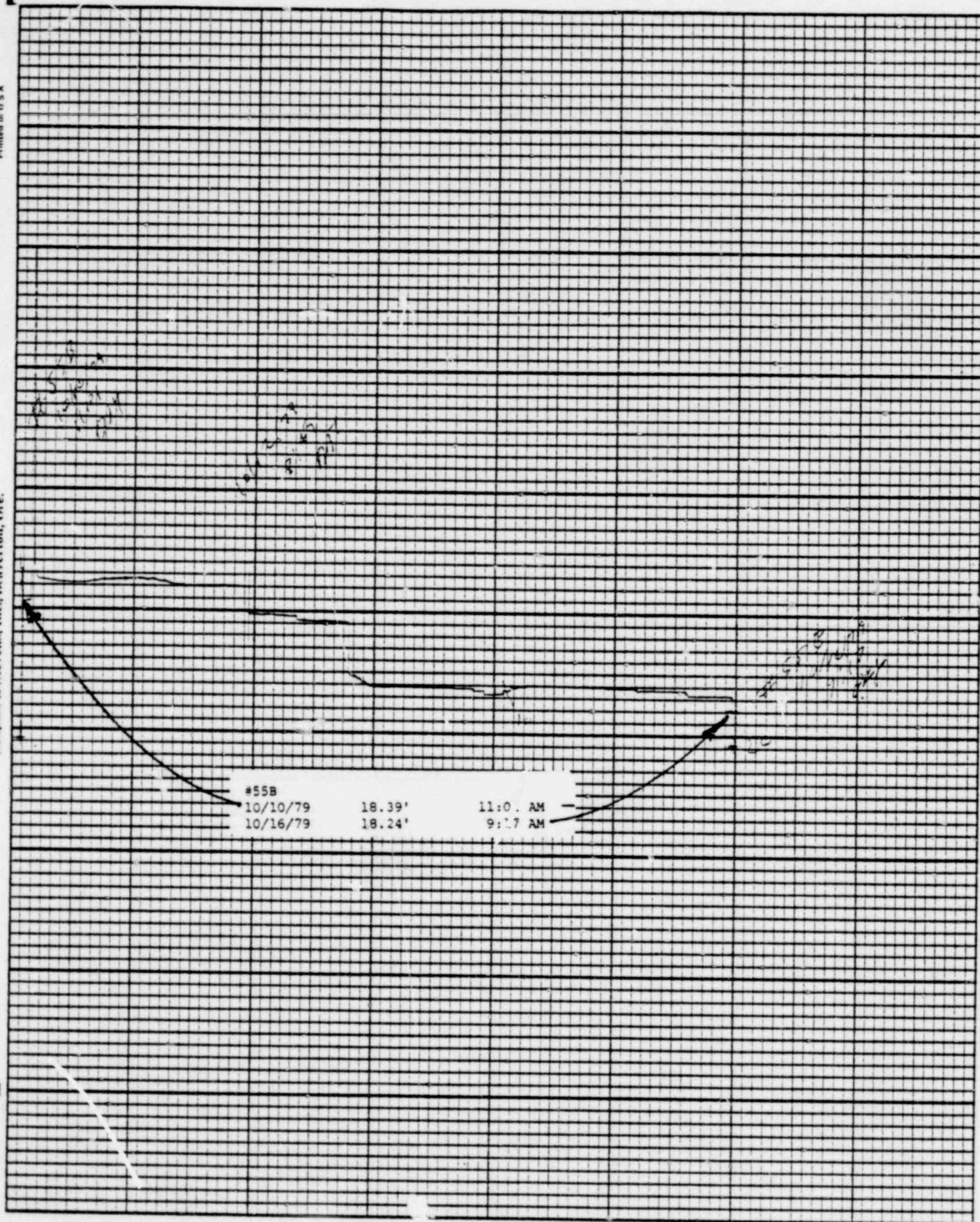




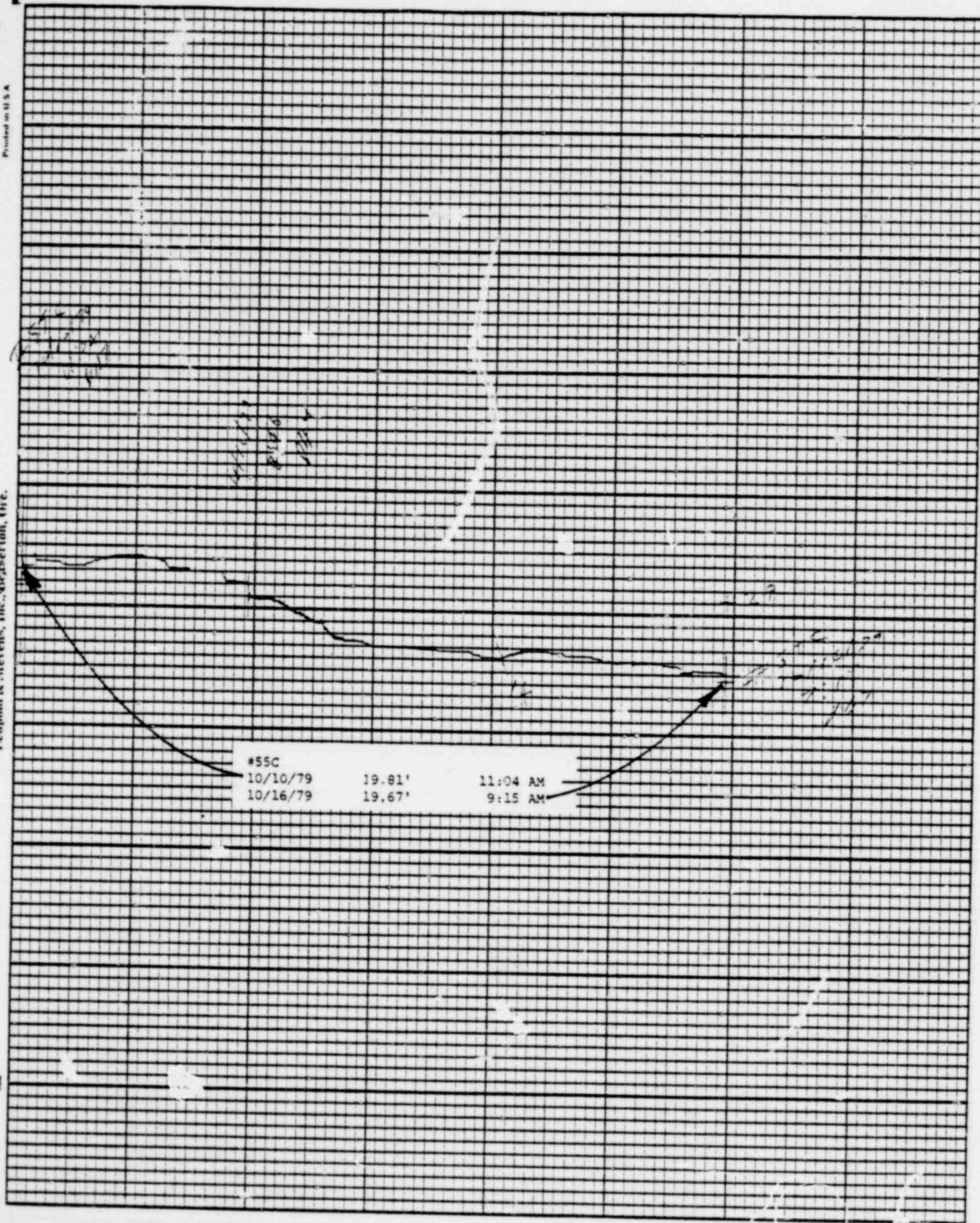
Laupold & Stevens, Inc., Beaverton, Ore.

Stevens Water Level Recorder -- Type F

(S)

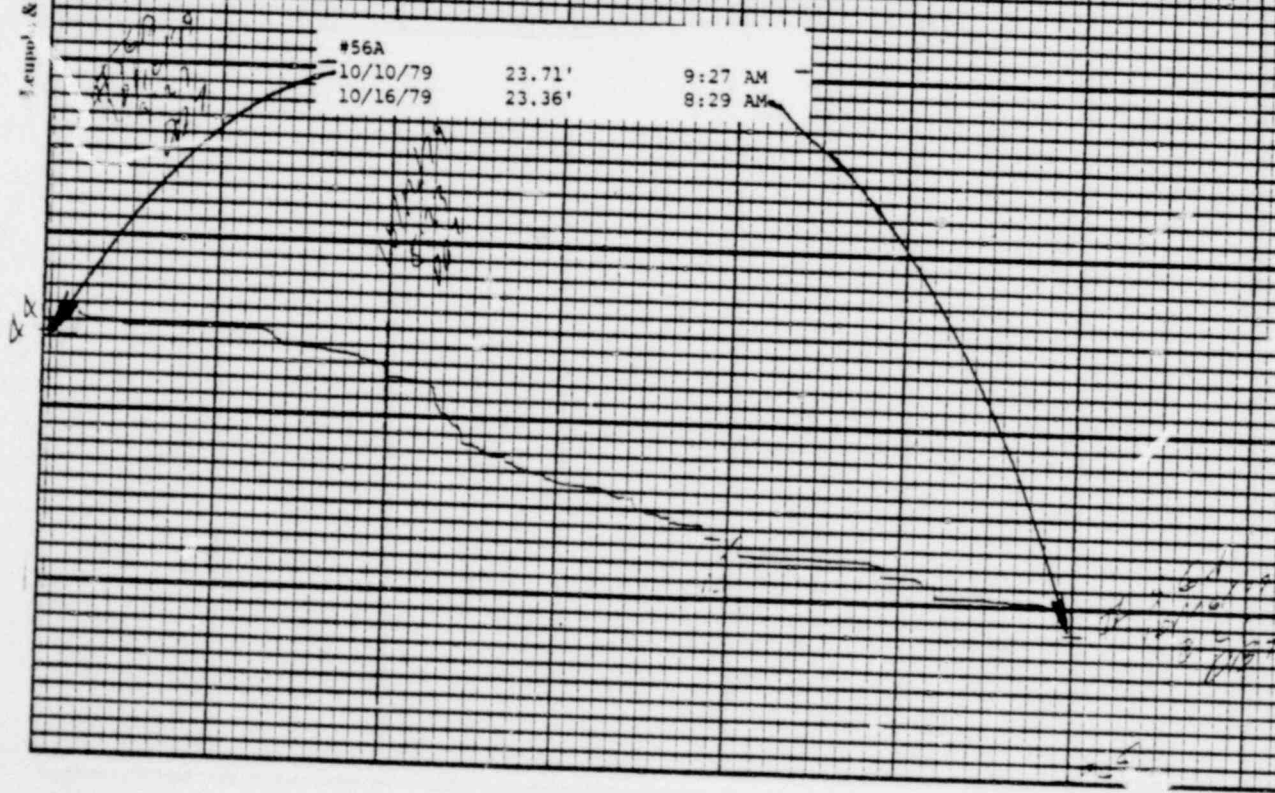


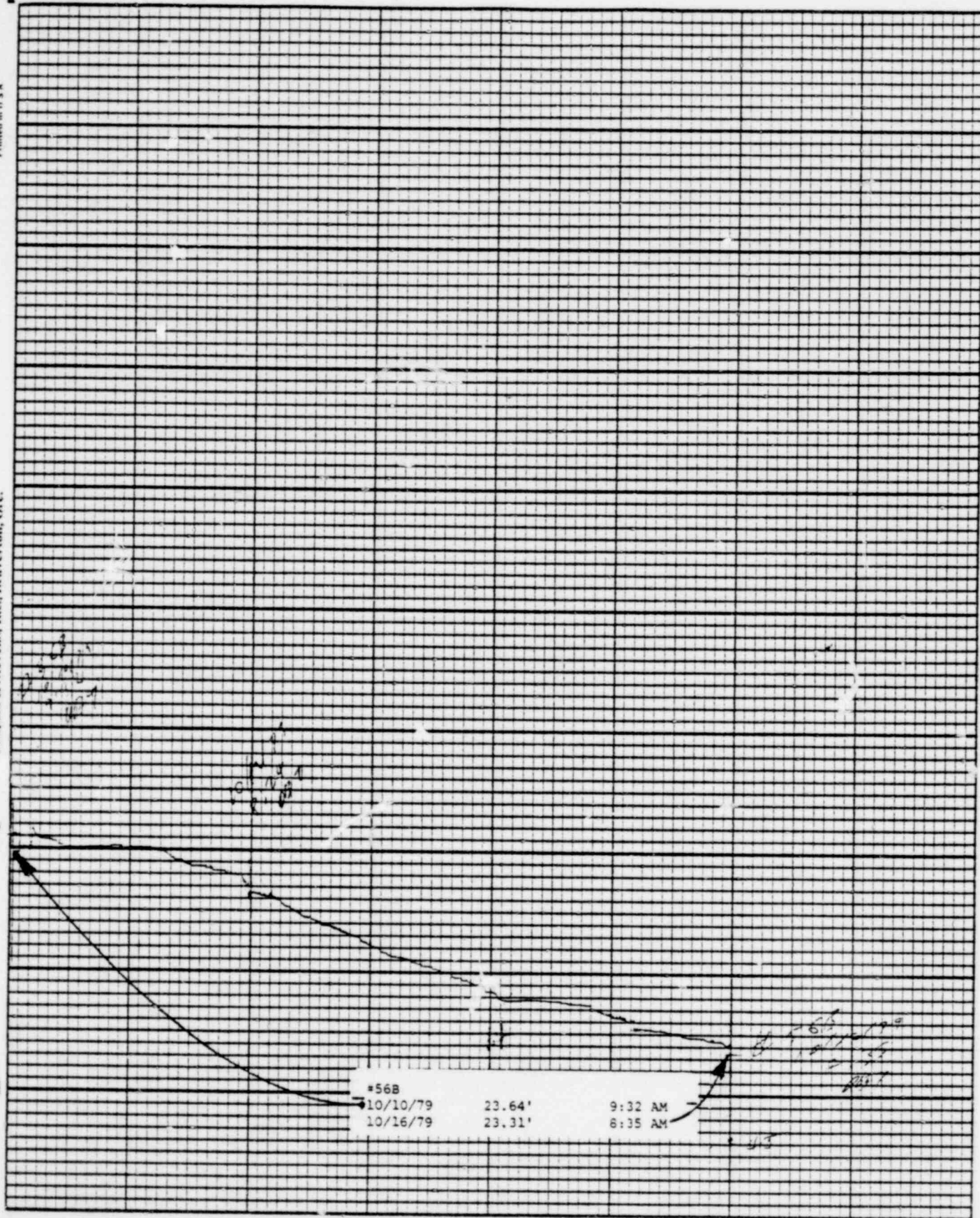
1272 237



Leupold & Stevens, Inc., Beaverton, Ore.

Stevens Water Level Recorder — Type F

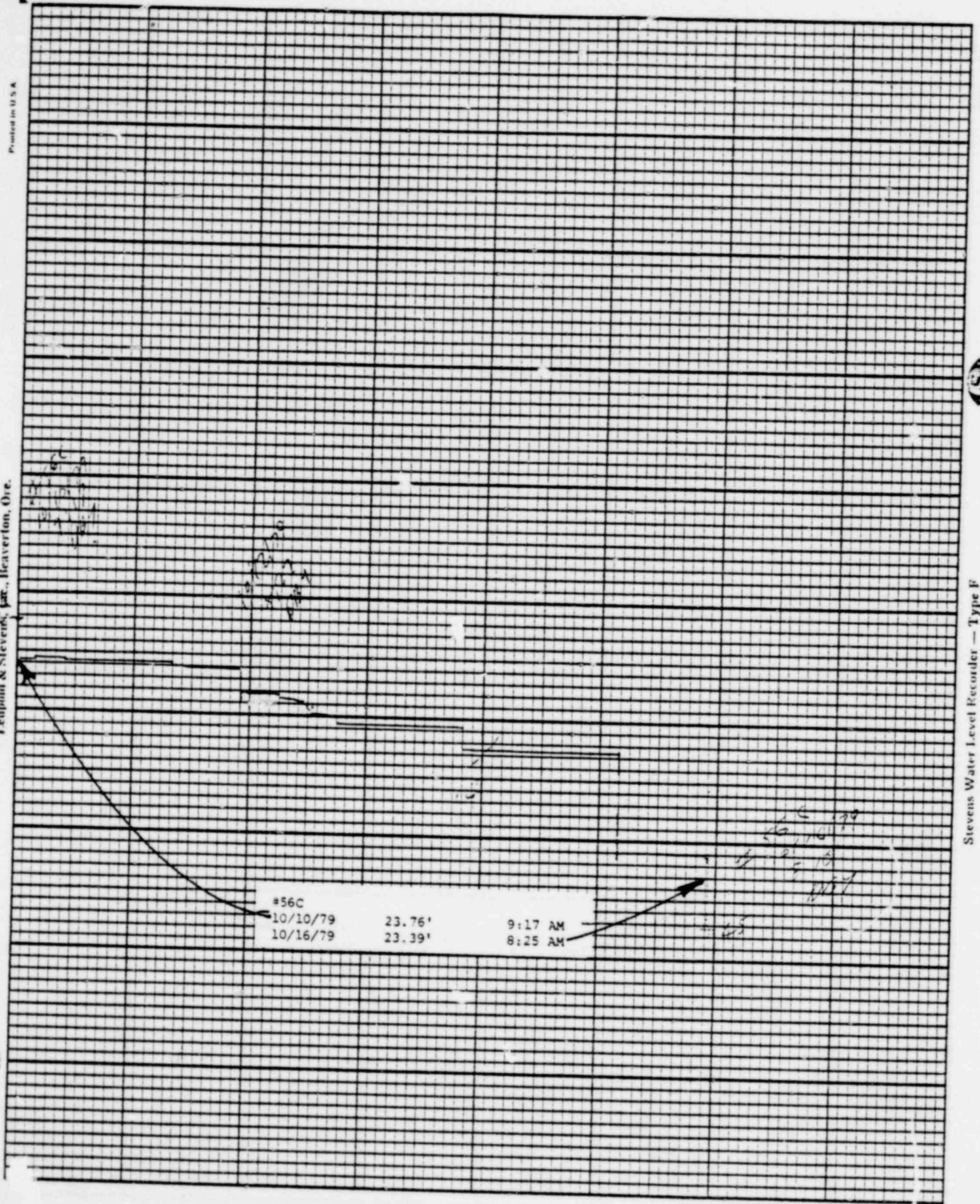




Leupold & Stevens, Inc., Beaver, Ore.

Stevens Water Level Recorder — Type F

(S)



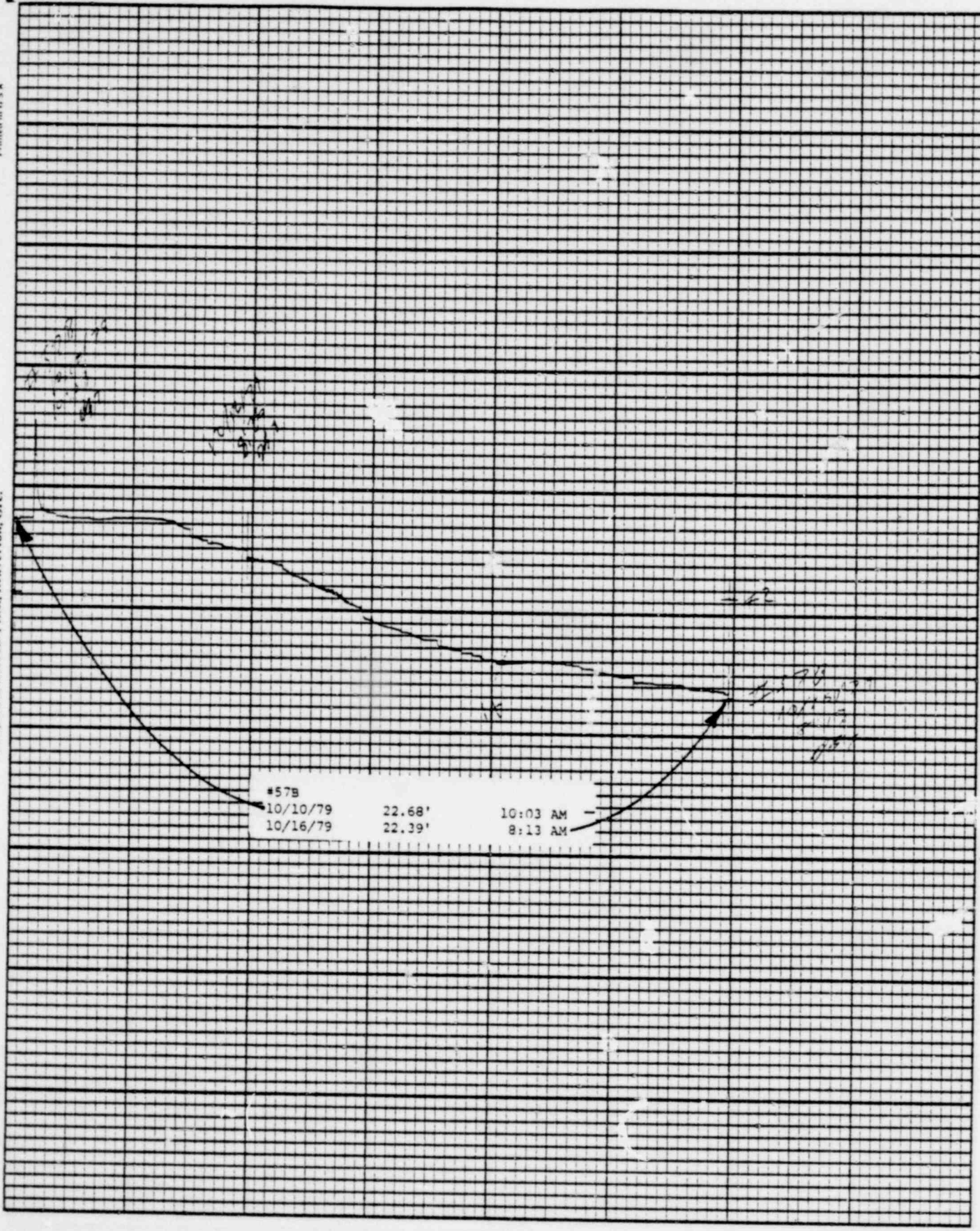
Printed in U.S.A.

Leupold & Stevens, Inc., Beaverton, Ore.

Chart F-1

5

Stevens Water Level Recorder — Type F



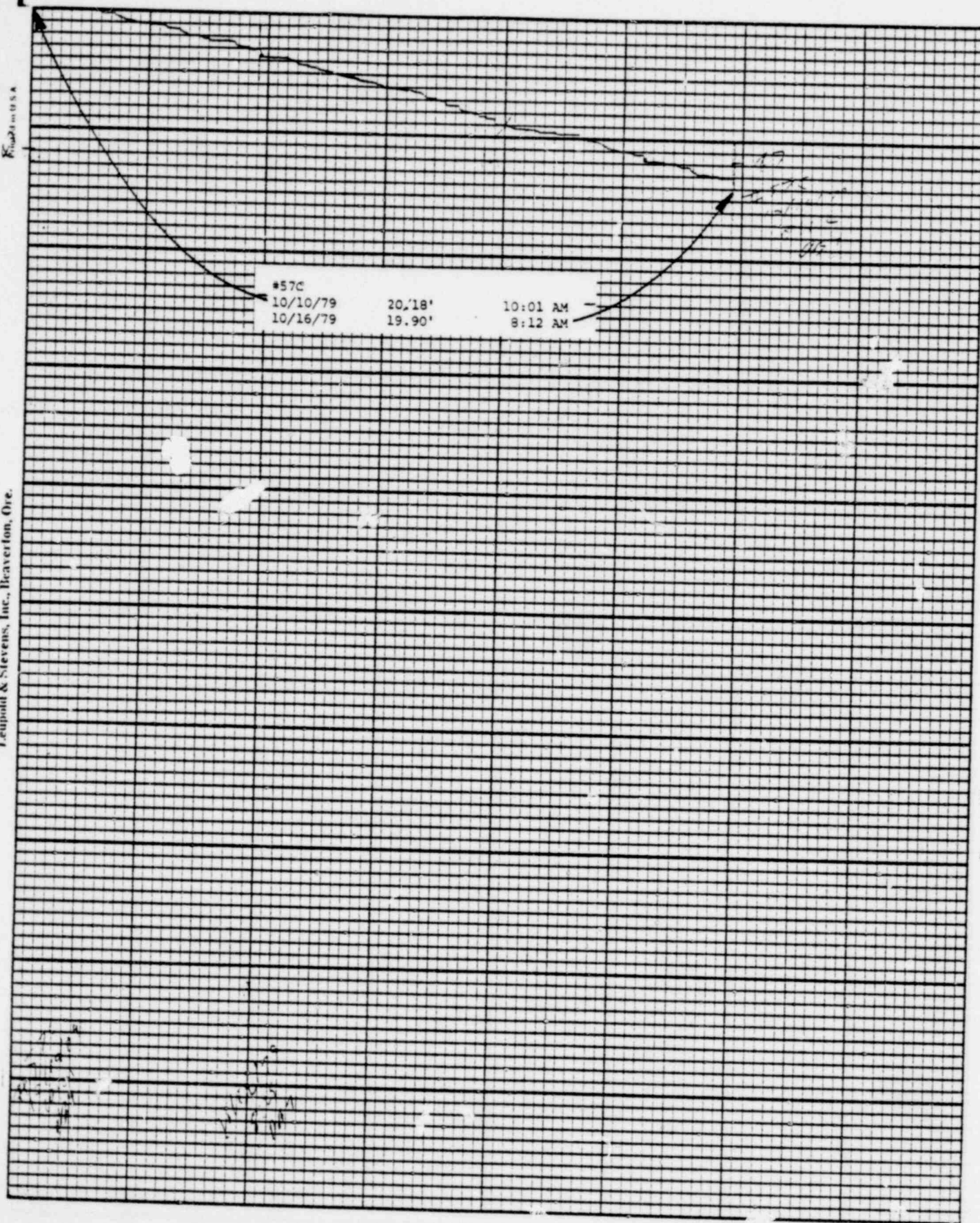
1272 242

Leupold & Stevens, Inc., Beaverton, Ore.

Chart F-1

Stevens Water Level Recorder — Type F

Chart F-1



1272 243

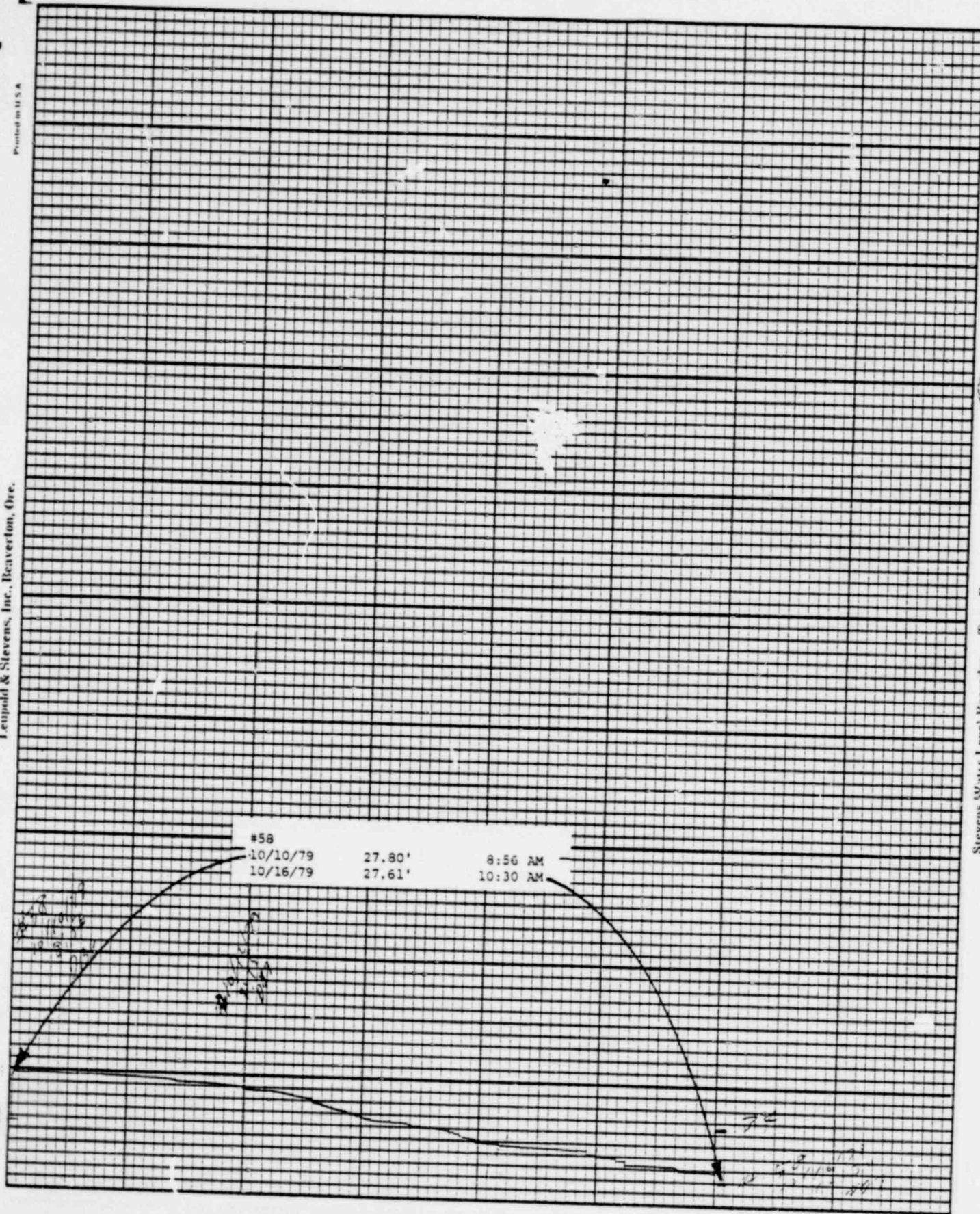
Printed in U.S.A.

Leipold & Stevens, Inc., Beaverton, Ore.

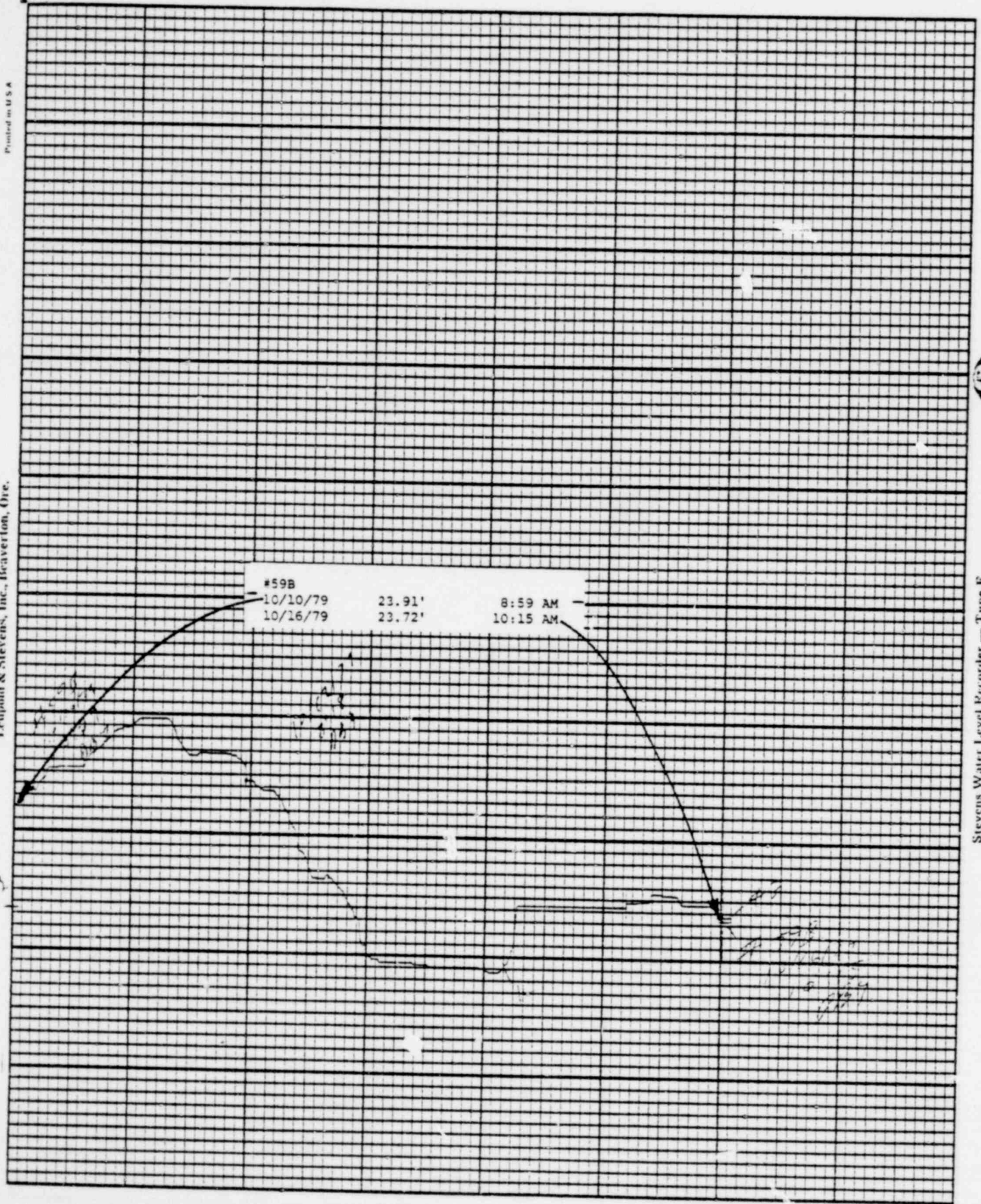
Chart F-1

Stevens Water Level Recorder — Type F

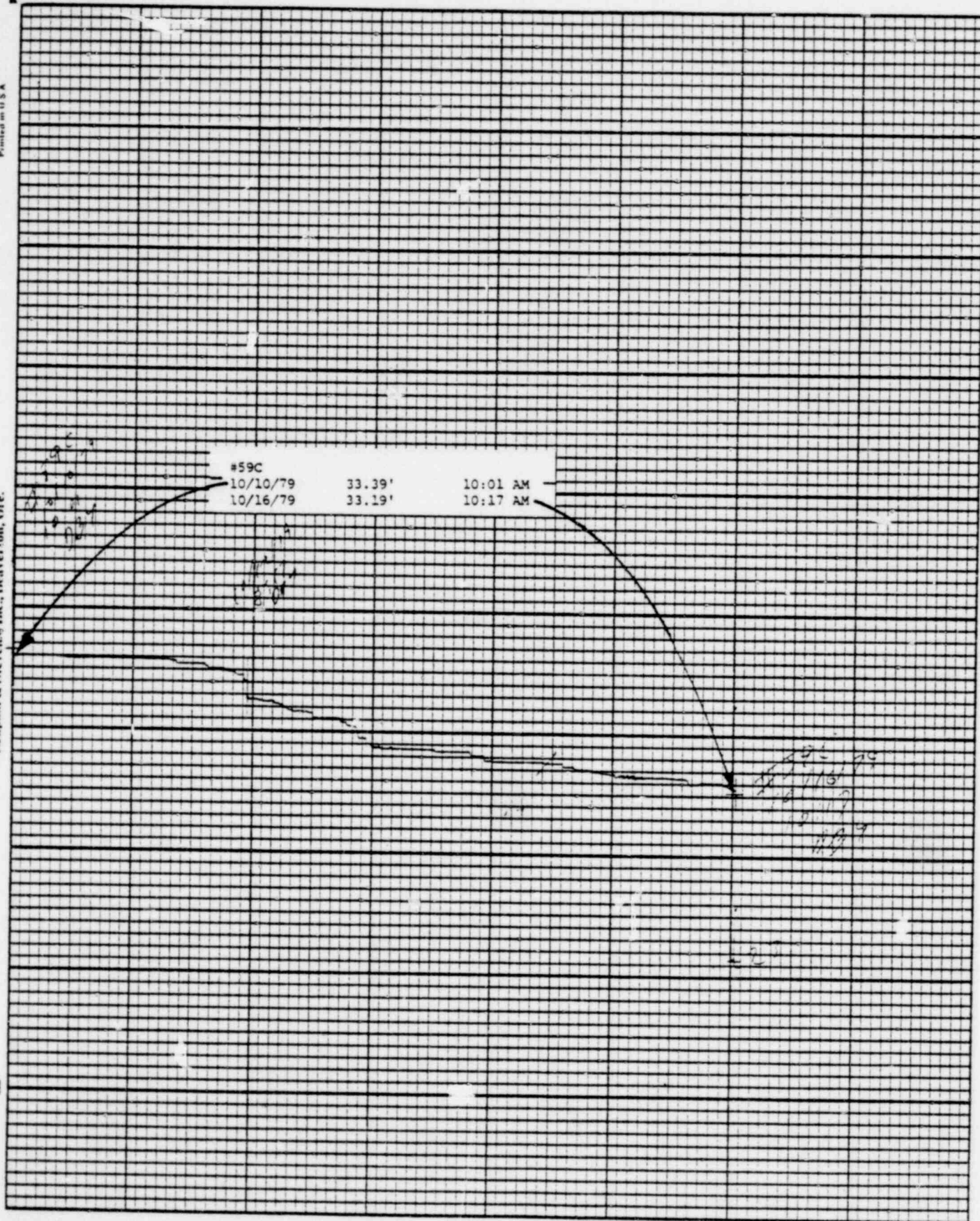
(S)



1272 244



Leupold & Stevens, Inc., Beaverton, Ore.



Stevens Water Level Recorder — Type F

Chart F-1

BAILLY WELLS WITHOUT RECORDERS

10/17/79

<u>WELL #</u>	<u>WATER ELEVATION IN FEET</u>
62	31.44
65	26.91
67	21.85
72	10.79
73	11.61
74	14.50

DBY:bd

1272 247

POND LEVELS

<u>POND</u>	<u>10/17/79</u>
1	27.23'
2	30.26'
3	27.91'
4	23.25'
5	22.68'
6	32.73'
7	DRY
8	DRY
9	28.57'
10	39.27'
11	39.87'
12	36.74'
13	37.45'

1272 248

DBY:bd

PNEUMATIC PRESSURE TRANSDUCERS

10/16/79

TRANSDUCER

WATER ELEVATION IN FEET

P-1	11.4
P-2	10.2
P-3	6.9
P-4	13.5
P-5	14.4
P-6	15.5

1272 249

DBY:bd

WATER METER READINGS

<u>DATE</u>	<u>TIME</u>	METER <u>READING</u> (GALLONS)	<u>INSTANTANEOUS FLOW RATE</u> (GPM)
<u>Sump Pump Discharge</u>			
10/16/79	10:23 AM	307,999,000	217

Well Point Discharge

10/16/79	10:23 AM	9,025,589	NOT IN USE
----------	----------	-----------	------------

DBY:bd

. 1272 250