



## Northern Indiana Public Service Company

Nuclear Staff  
RR # 3, Box 501  
Chesterton, IN 46304  
October 29, 1979

BAILLY GENERATING STATION N-1

Mr. Ronald Ballard  
Environmental Projects Branch No. 1  
Directorate of Licensing  
U.S. Nuclear Regulatory Commission  
Washington, D.C. 20545

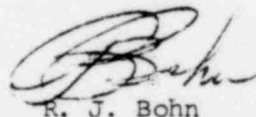
RE: NORTHERN INDIANA PUBLIC SERVICE COMPANY  
BAILLY GENERATING STATION NUCLEAR 1  
DOCKET 50-367

Dear Mr. Ballard:

Enclosed herewith are ten (10) copies of the following:

1. Well Charts for 10/3/79 - 10/10/79
2. Bailly Wells Without Recorders for 10/10/79
3. Pond Levels for 10/10/79
4. Pneumatic Pressure Transducers for 10/10/79
5. Water Meter Readings for 10/10/79

Sincerely,



R. J. Bohn  
Manager, Nuclear Staff

*cl ppe*  
DBY:lu

Enclosures

File: Ground Water Observation Monitoring Wells

*Handwritten:*  
DooH  
ES  
11

1276 040

7911060287

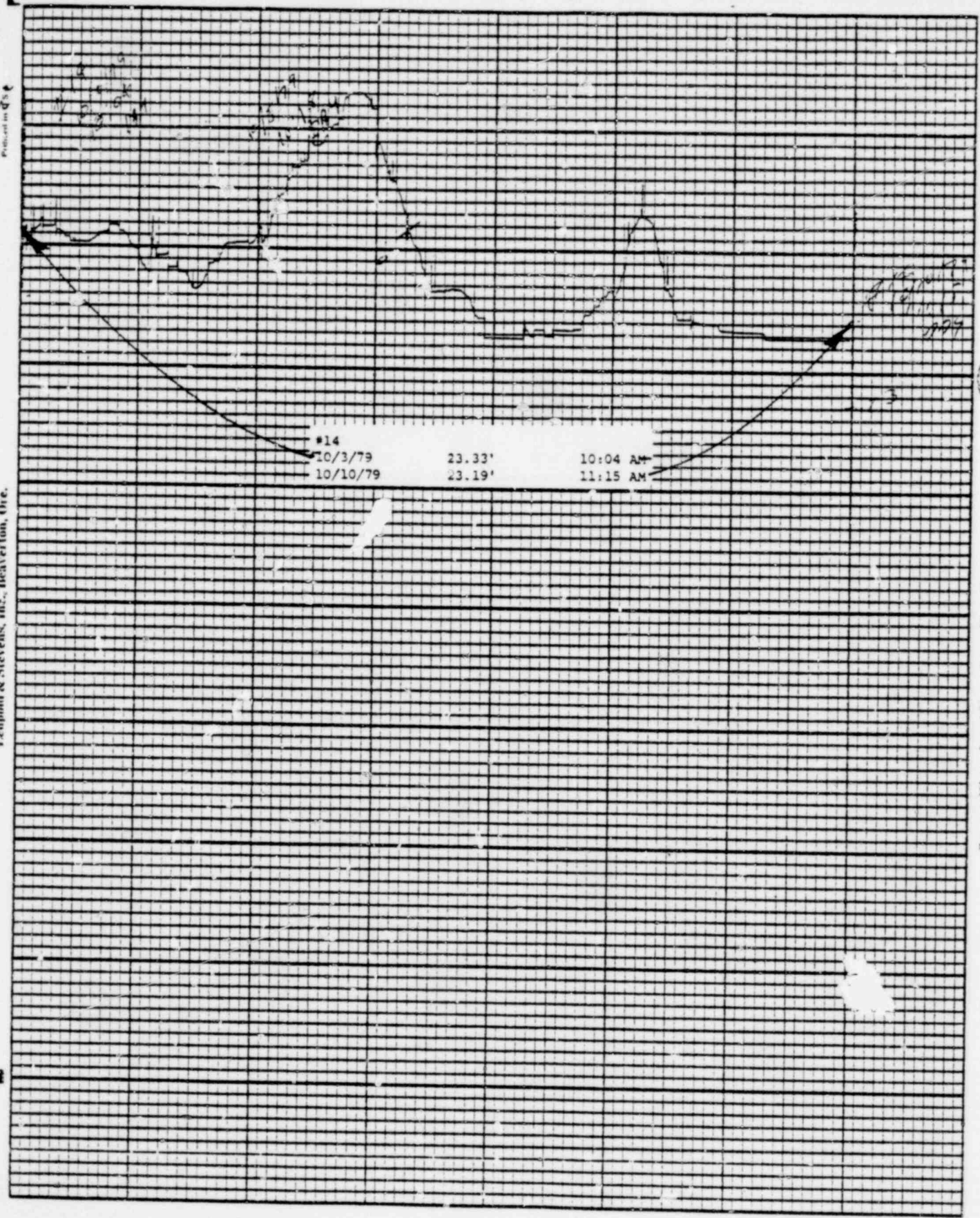
Printed on 7 1/2 x 11 in.

Leupold & Stevens, Inc., Beaverton, Ore.

Chart P. 1

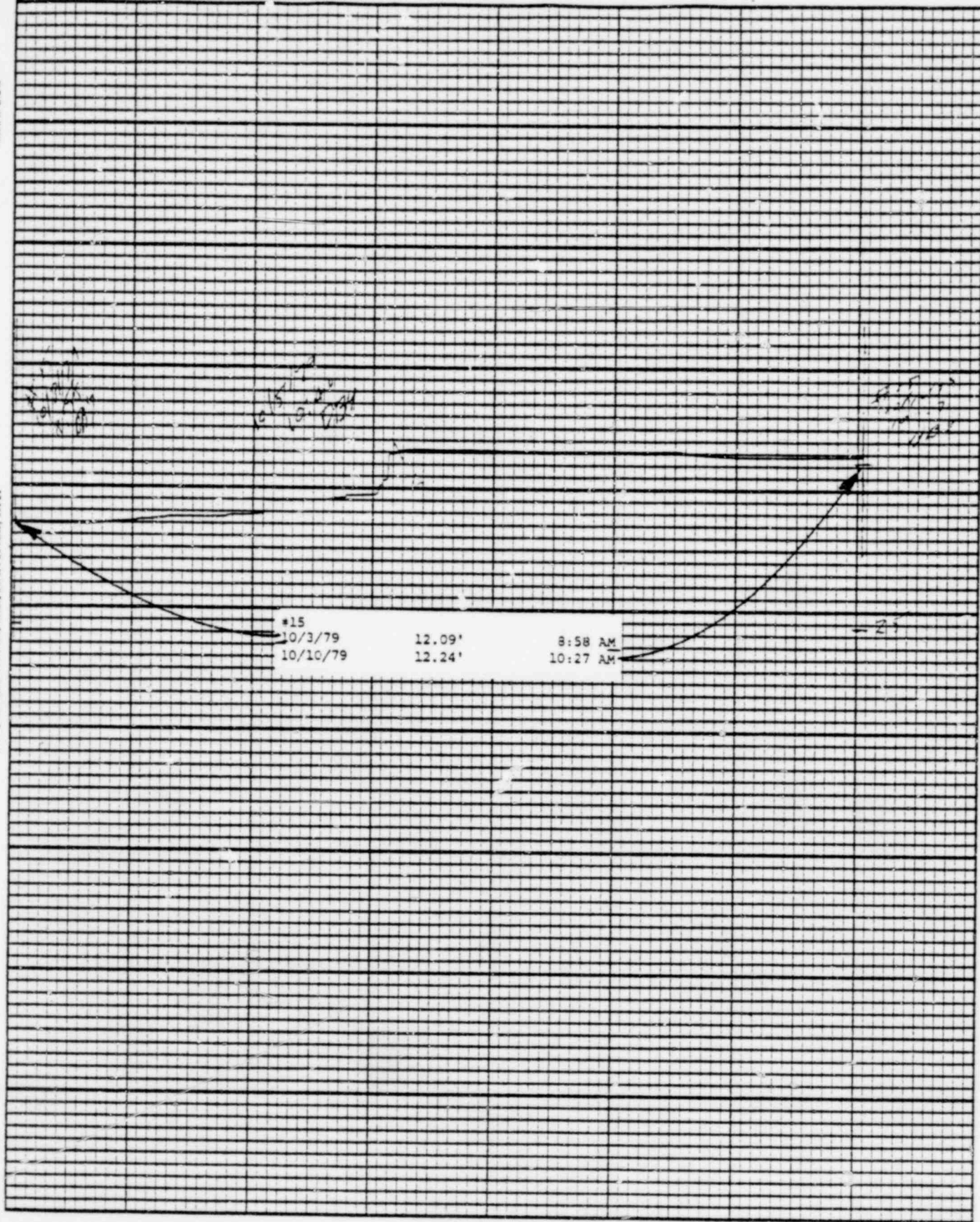
(S)

Stevens Water Level Recorder — Type F



POOR ORIGINAL

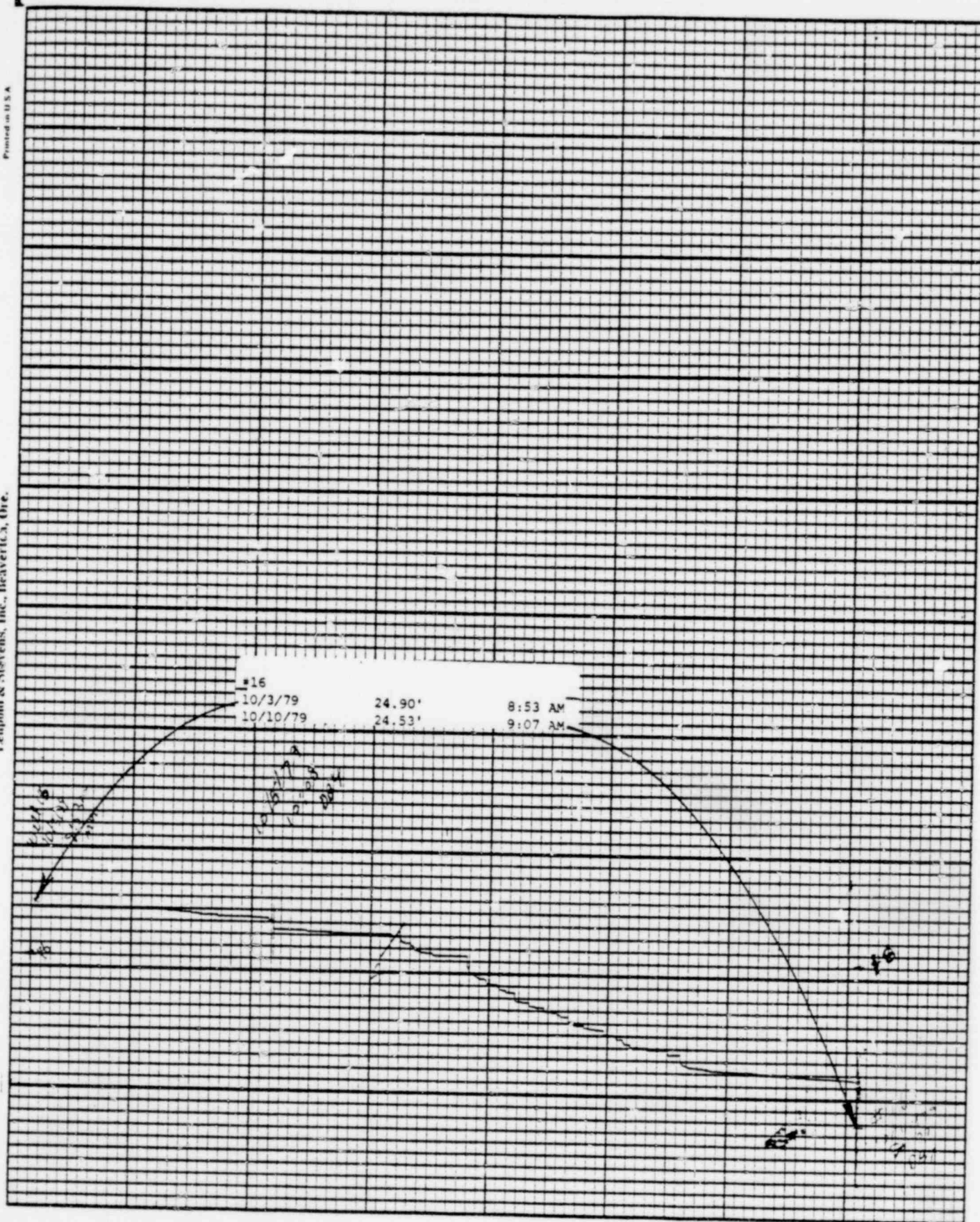
1276 041



POOR ORIGINAL

1276 042

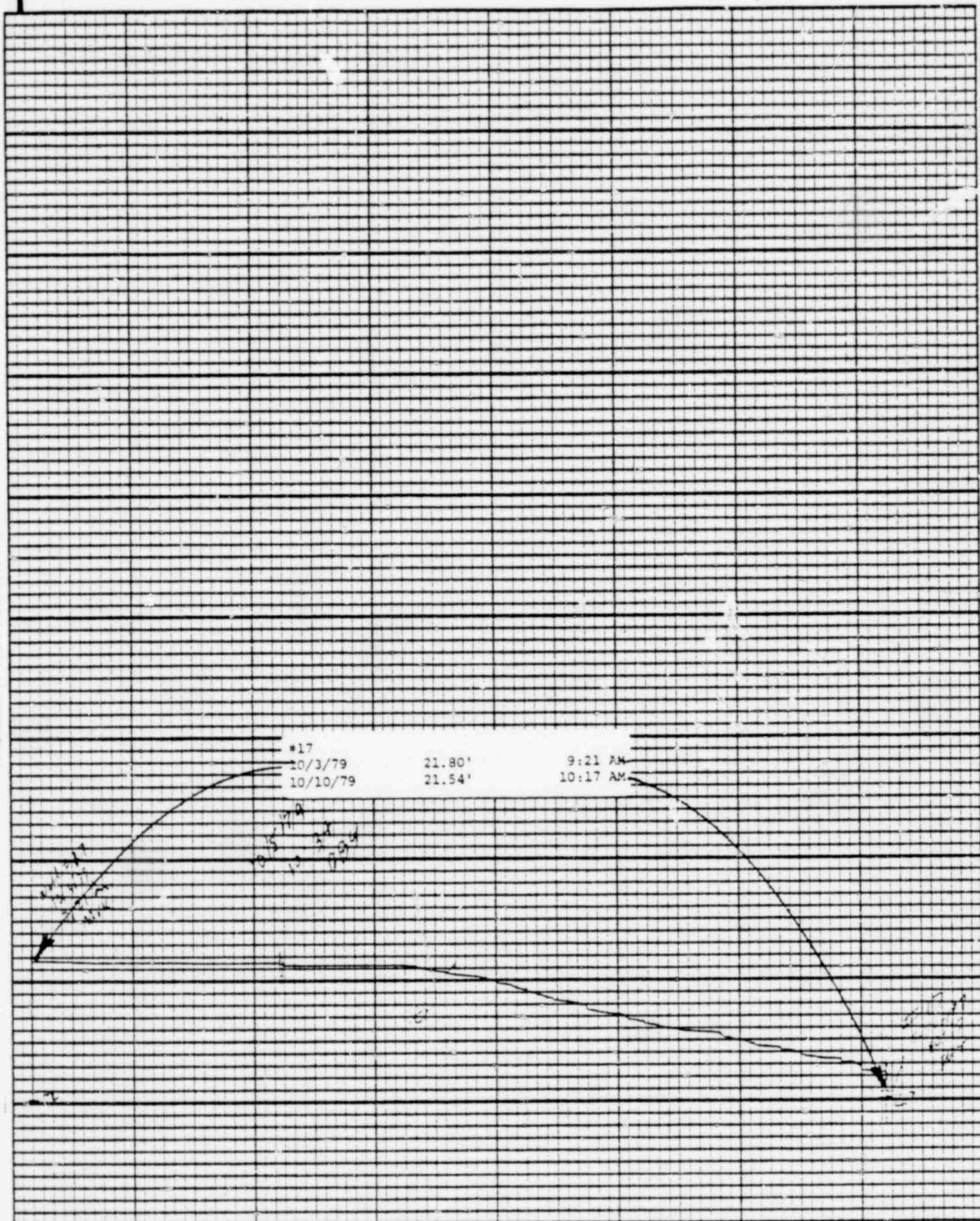




POOR ORIGINAL

1276 043



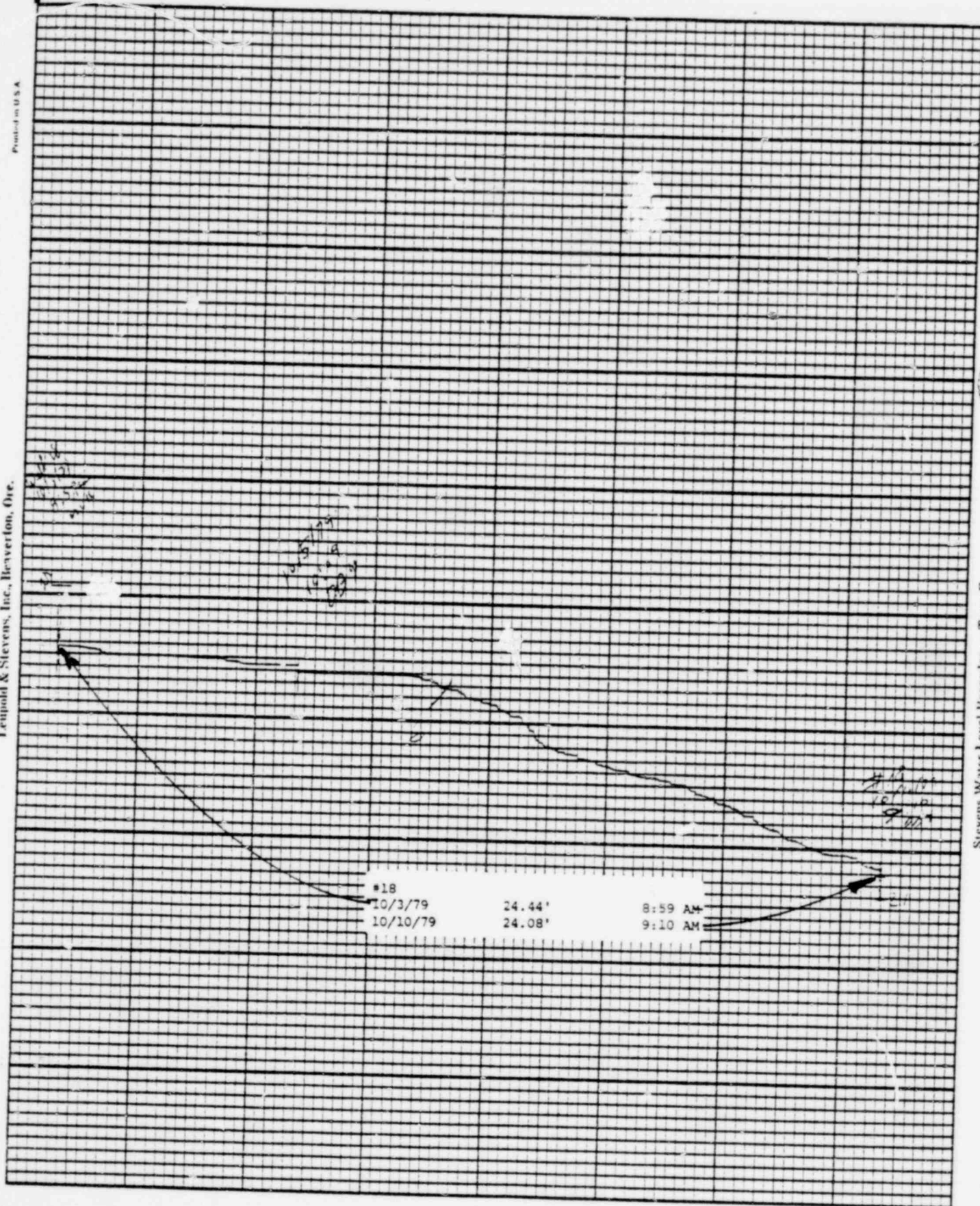


Leupold & Stevens, Inc., Beaverton, Ore.

Printed in U.S.A.

Chart F-1

Stevens Water Level Recorder — Type F



POOR ORIGINAL

1276 045

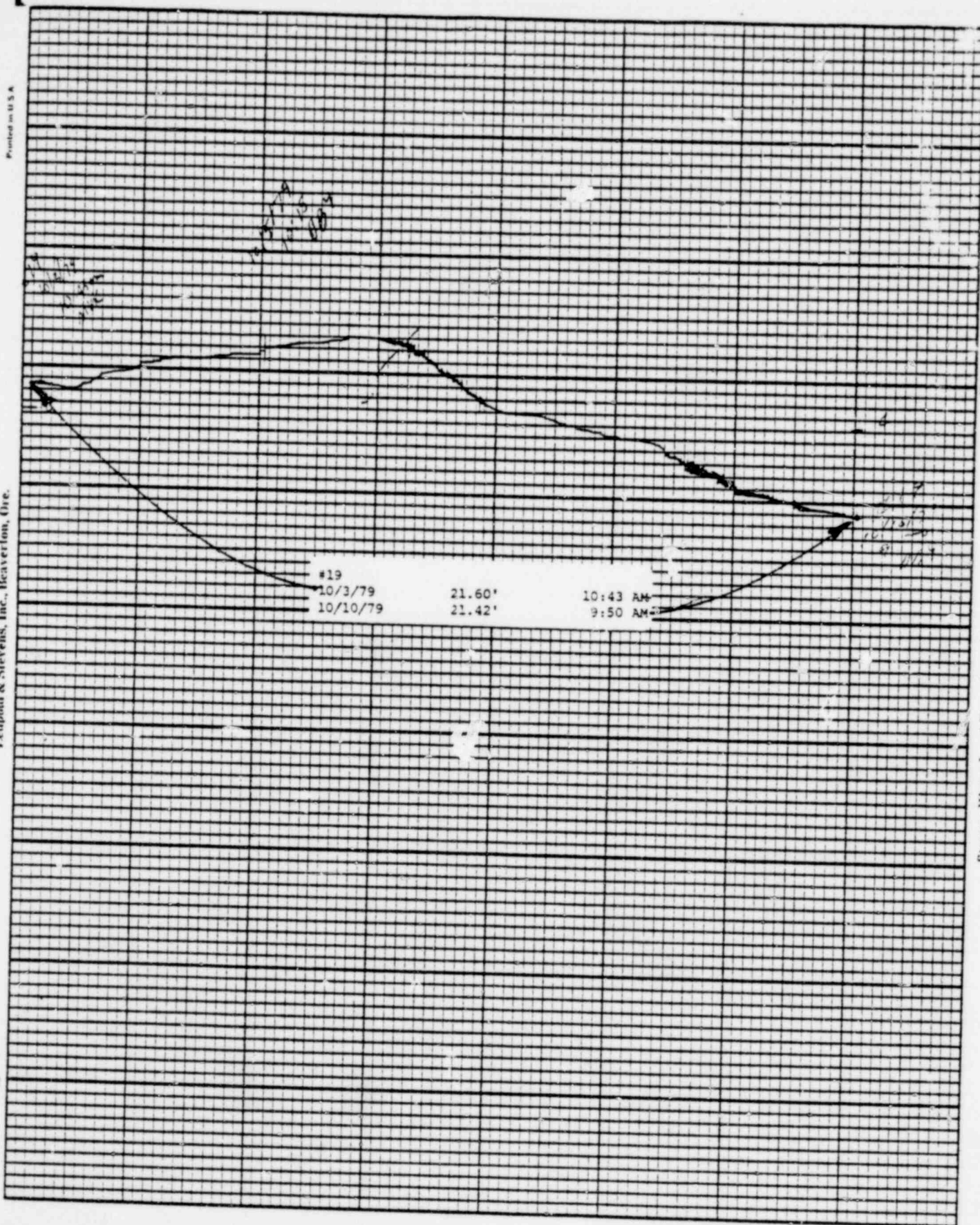


Printed in U.S.A.

Leupold & Stevens, Inc., Beaverlton, Ore.

Chart F-1

Stevens Water Level Recorder — Type F

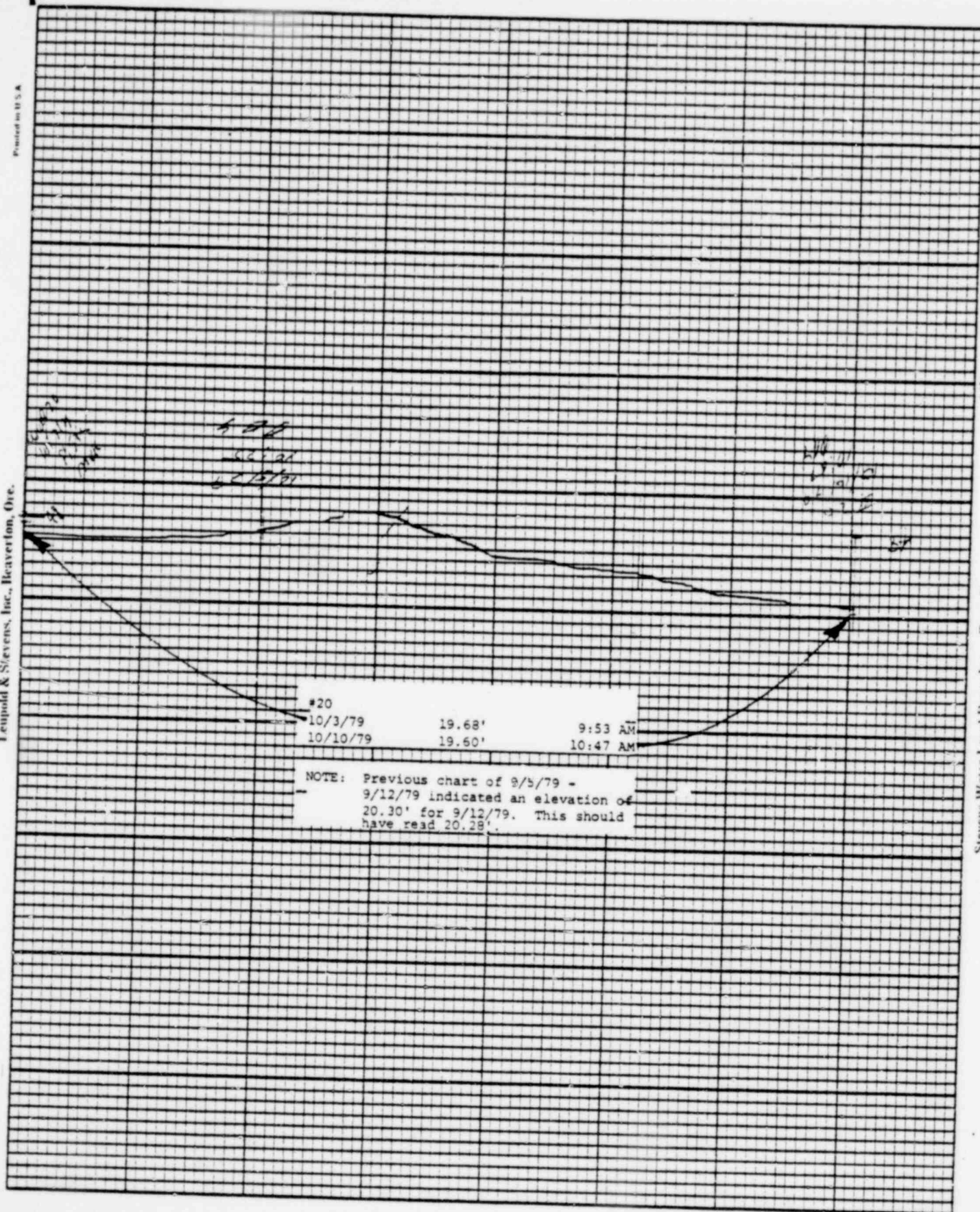


POOR ORIGINAL

1276 046



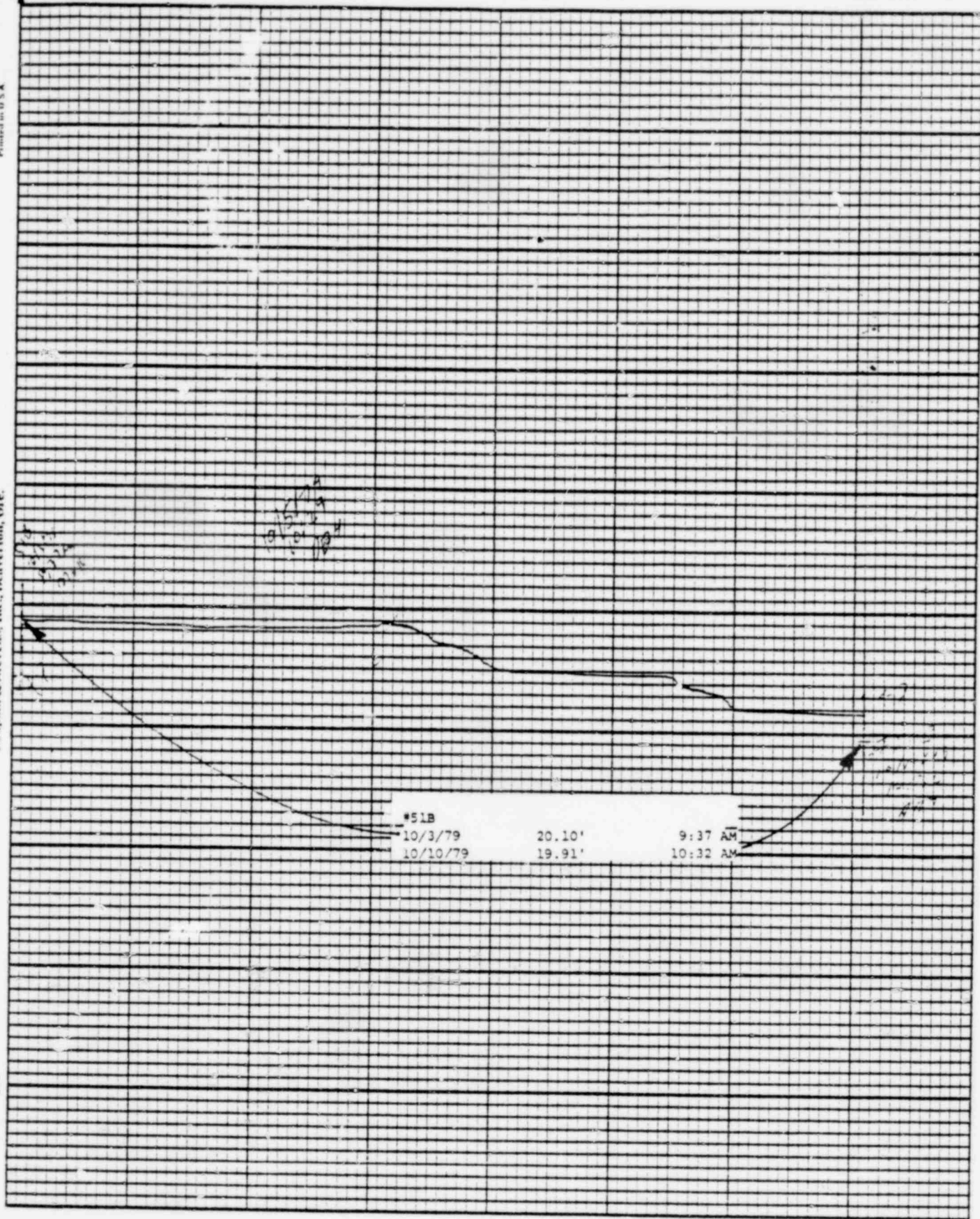
Leupold & Stevens, Inc., Beaverlton, Ore.



Stevens Water Level Recorder — Type F

POOR ORIGINAL

1276 047



POOR ORIGINAL

1276 048



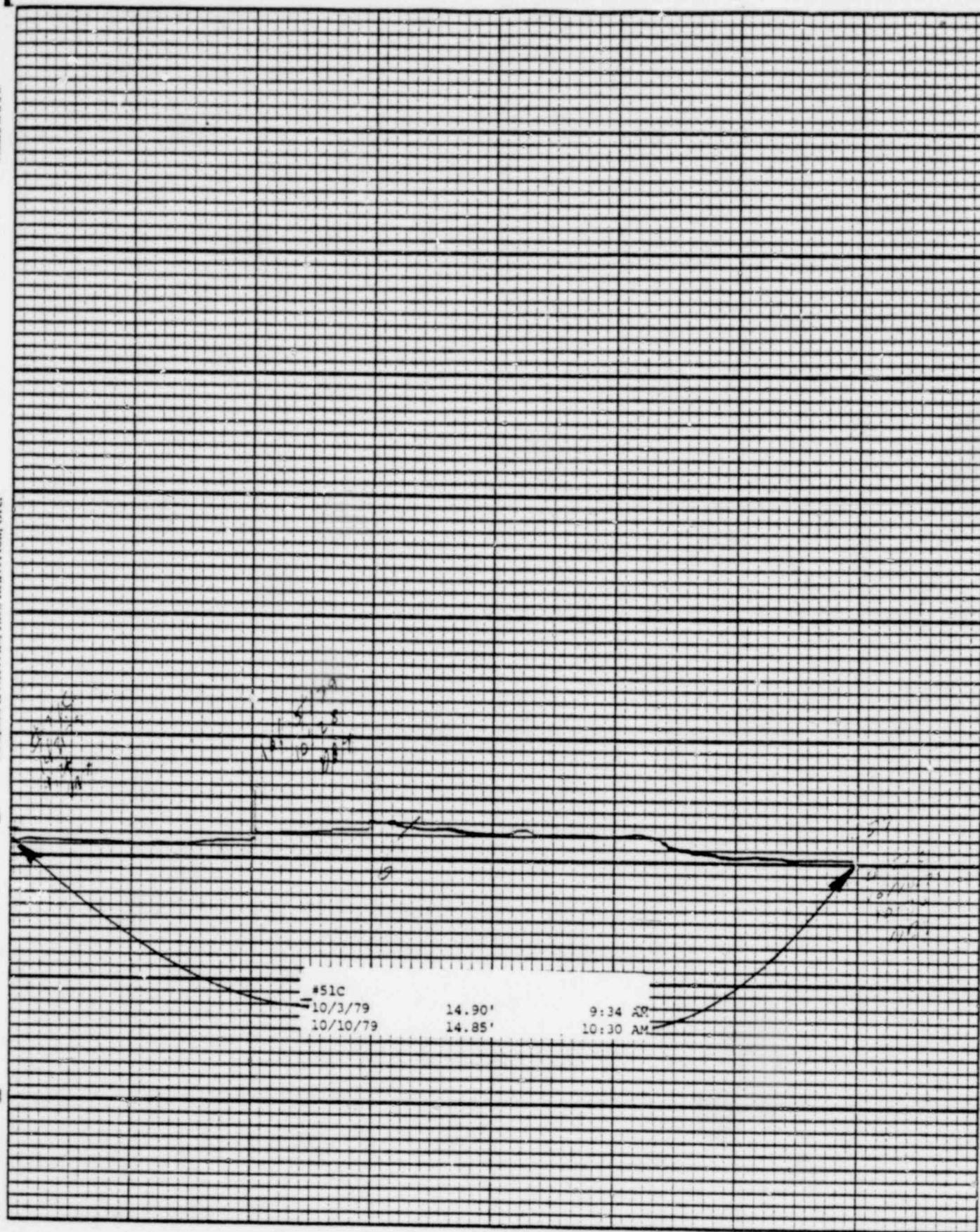
Printed in U.S.A.

Leupold & Stevens, Inc., Beaverton, Ore.

Chart F-1



Stevens Water Level Recorder — Type F



POOR ORIGINAL

1276 049



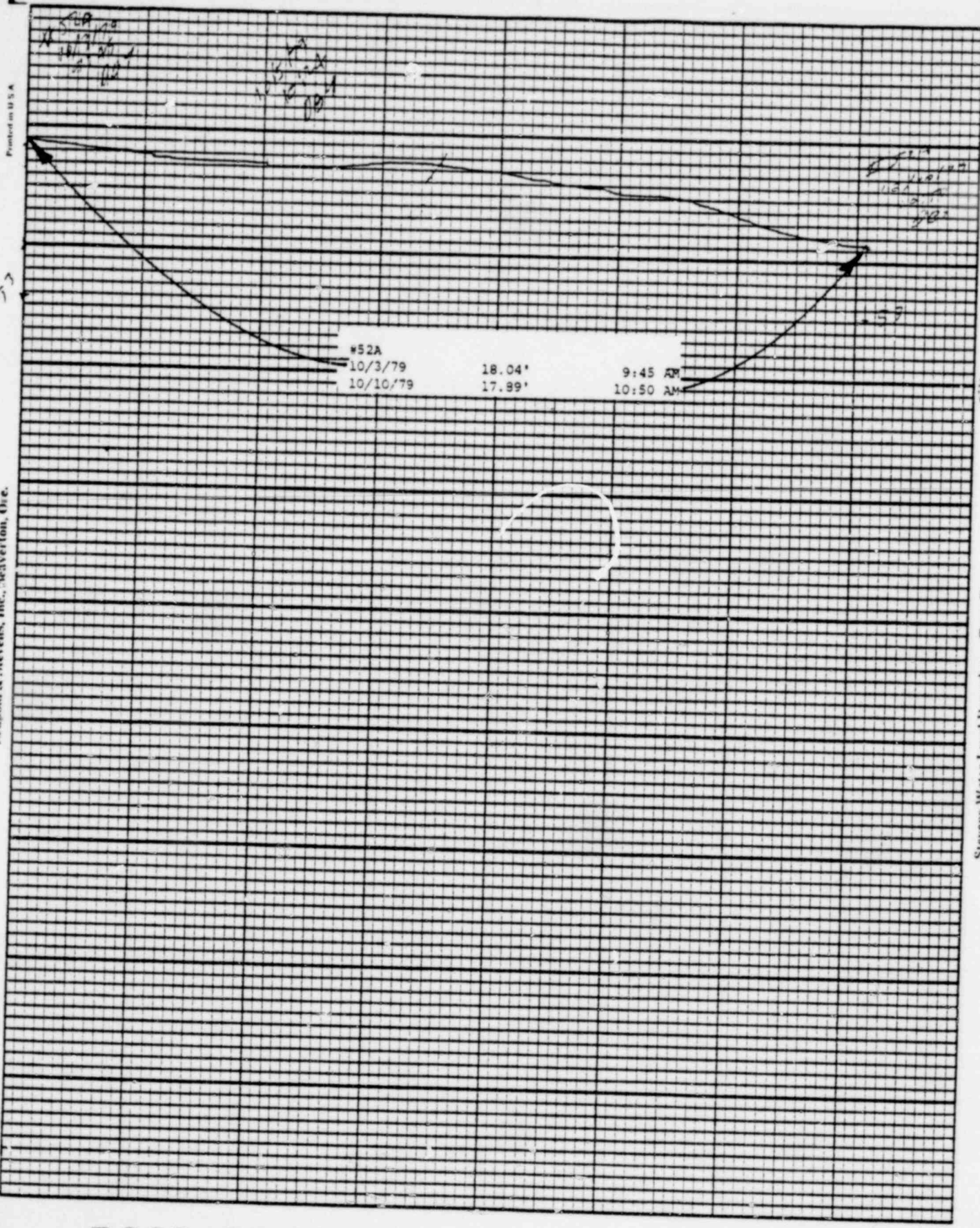


Chart F-4

Stevens Water Level Recorder — Type F

POOR ORIGINAL

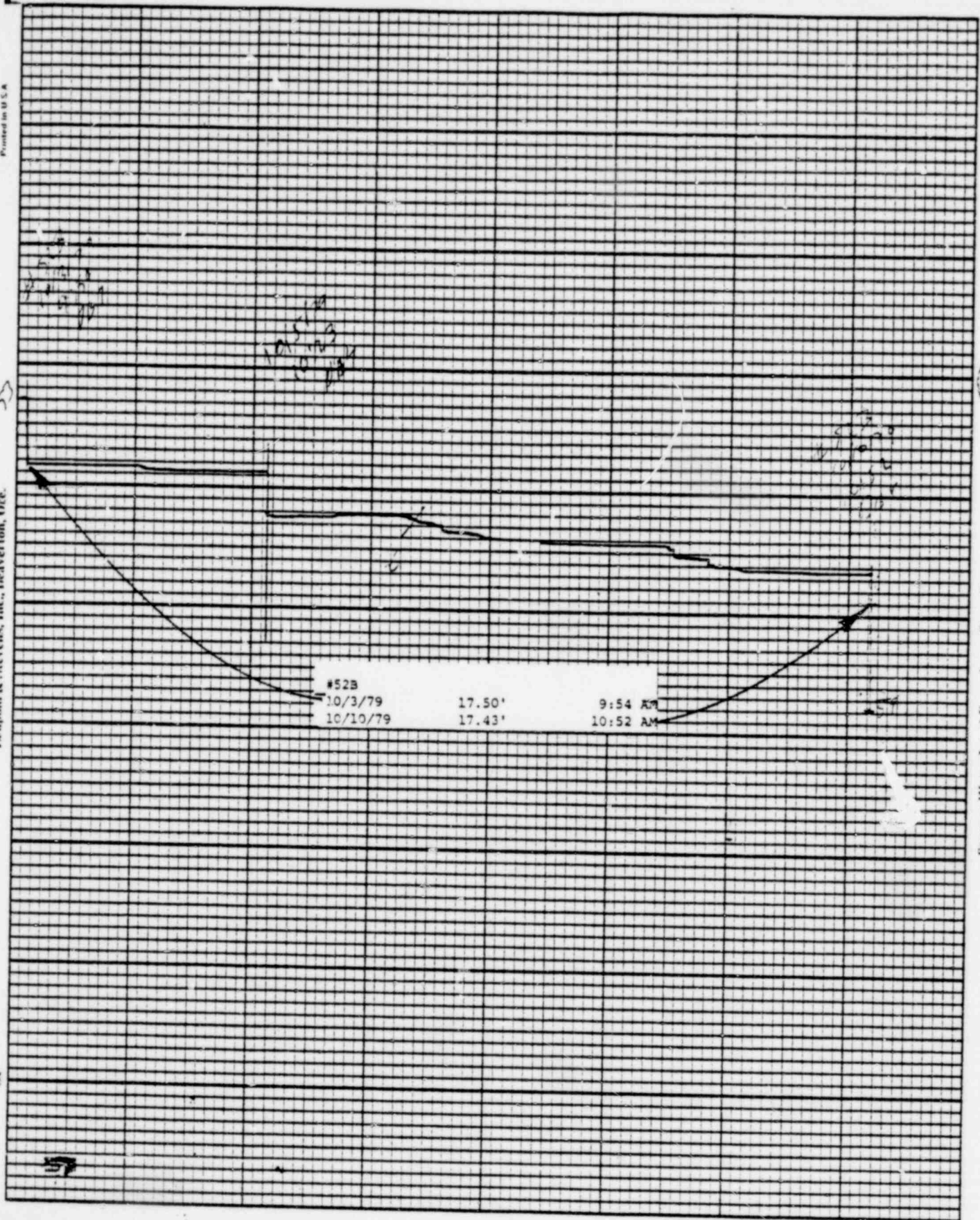
1276 050

Printed in U.S.A.

Leupold & Stevens, Inc., Beaverlton, Ore.

Chart P-1

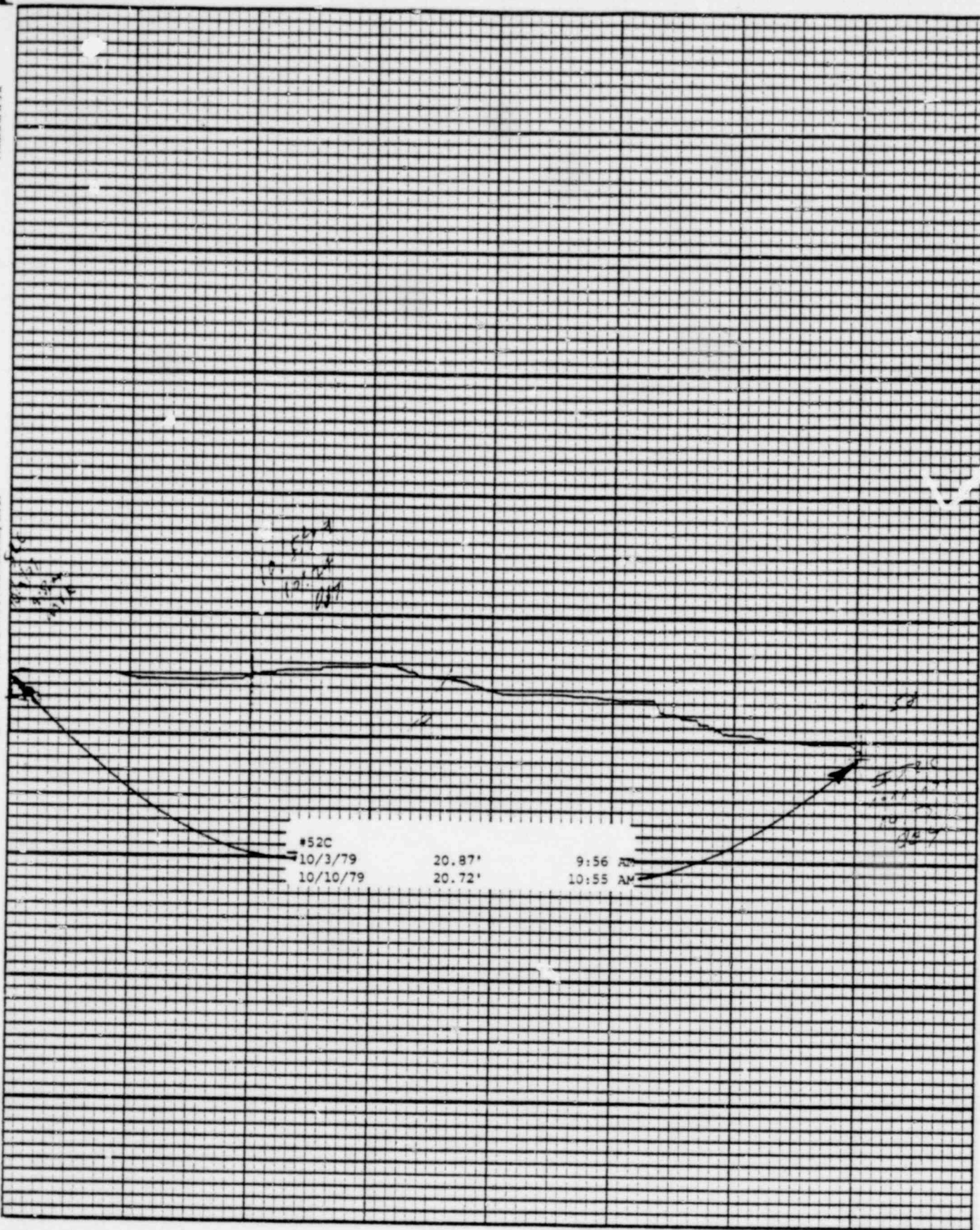
Stevens Water Level Recorder — Type F



POOR ORIGINAL

1276-051





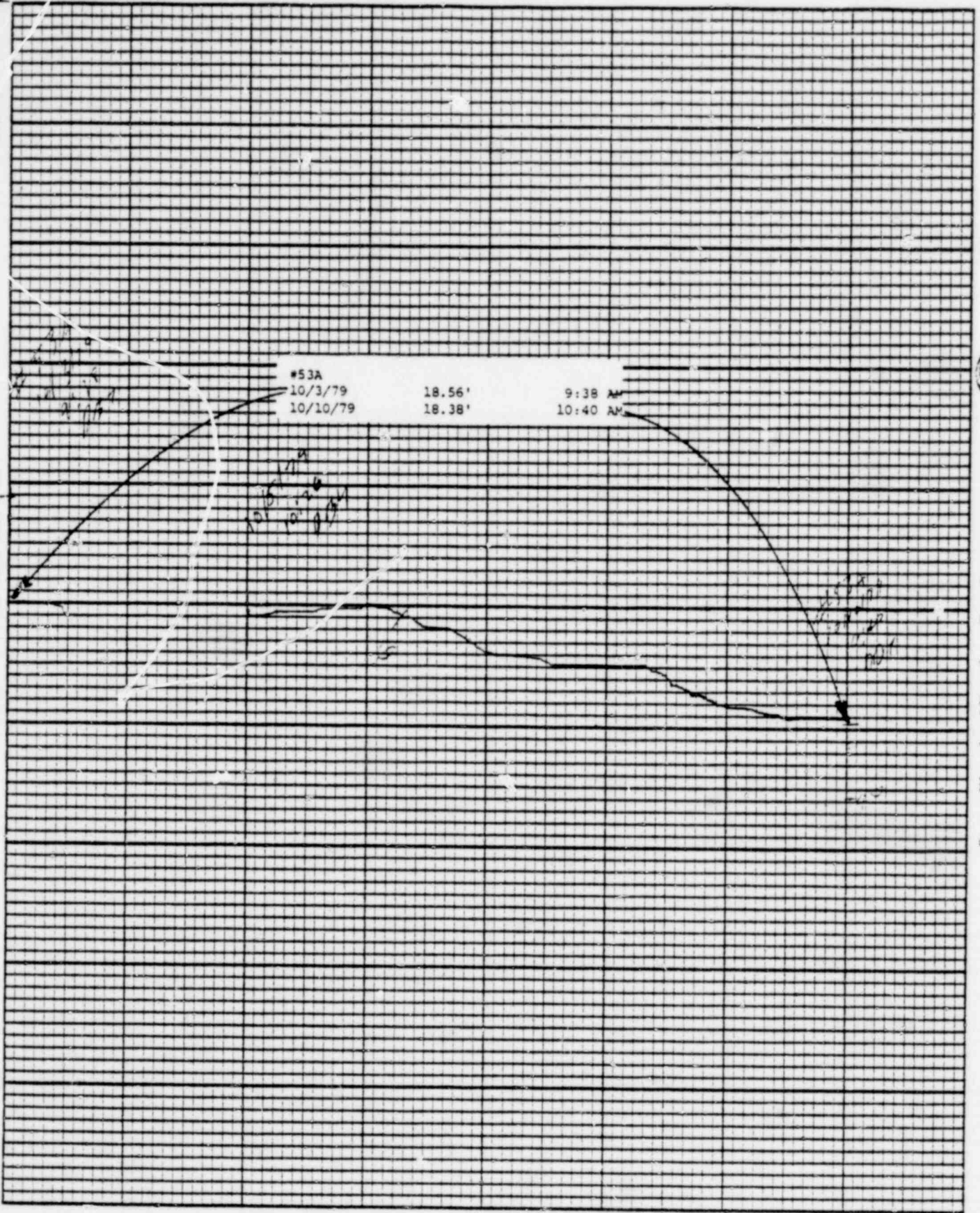
POOR ORIGINAL

1276 052



Leupold &amp; Stevens, Inc., Beaverton, Ore. 97005

### Sterling Water Level Recorder — Type R



POOR ORIGINAL

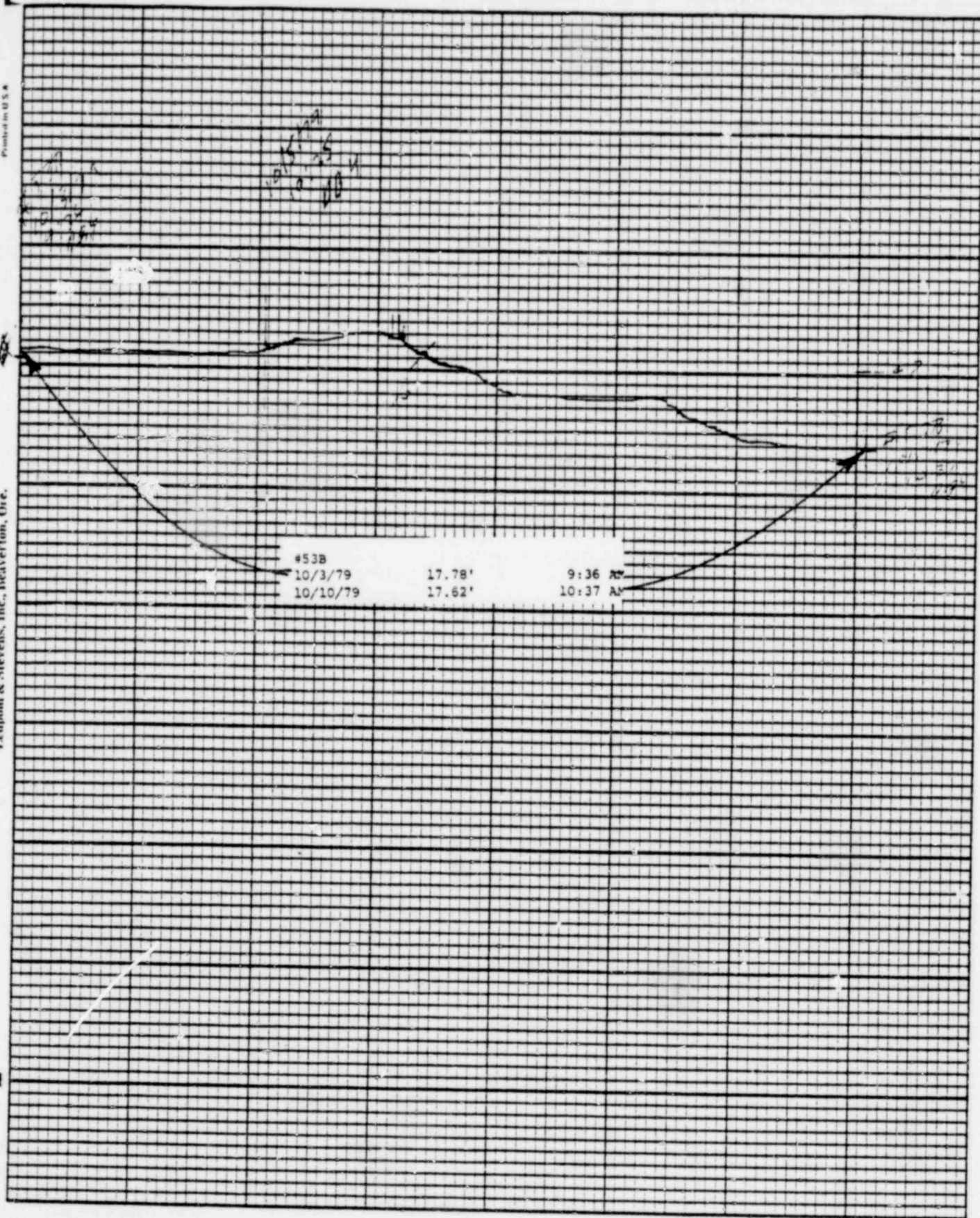
1276 053

Printed in U.S.A.

Leupold & Stevens, Inc., Beaverton, Ore.

Chart F-1

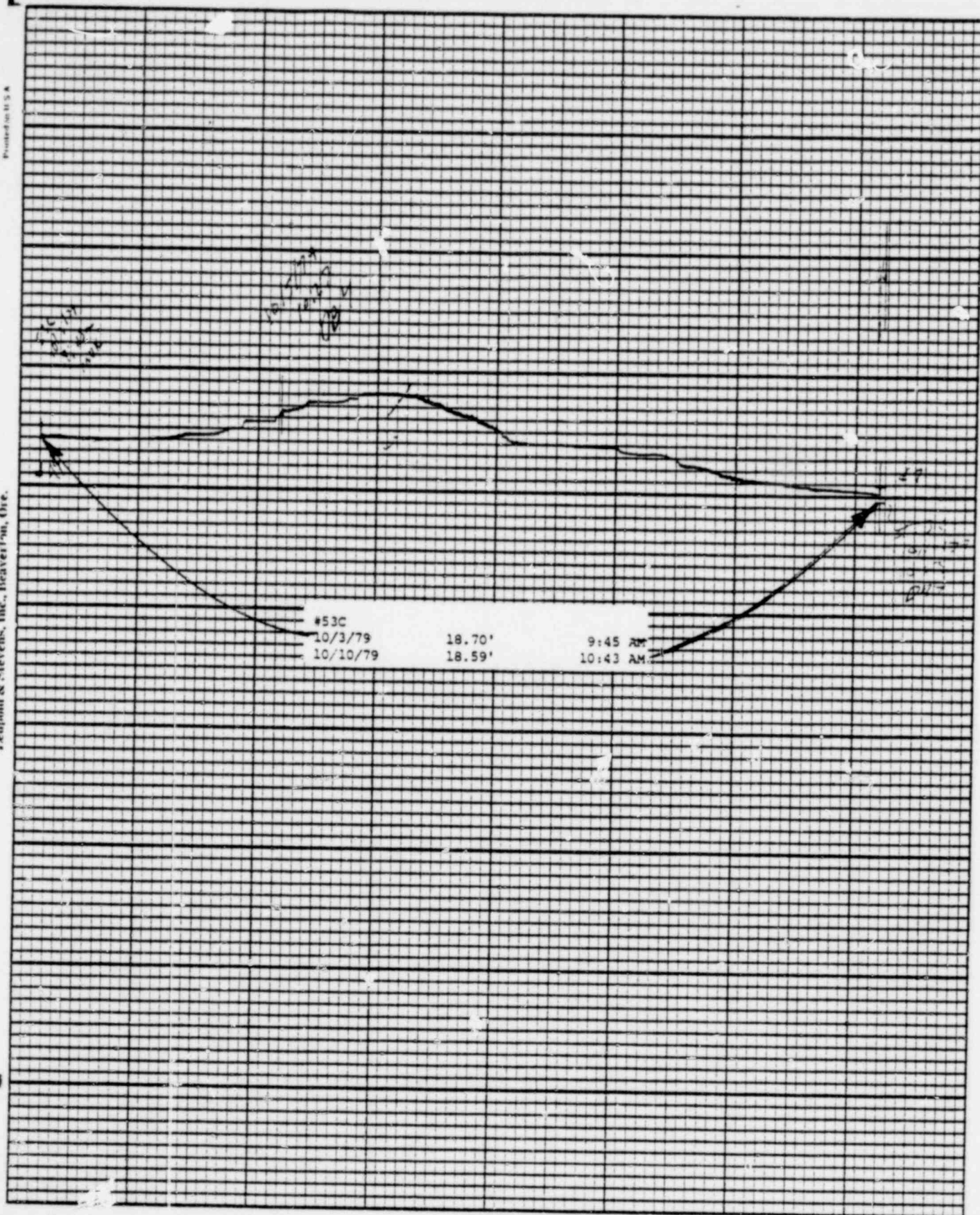
Stevens Water Level Recorder — Type F



POOR ORIGINAL

1276 054





POOR ORIGINAL

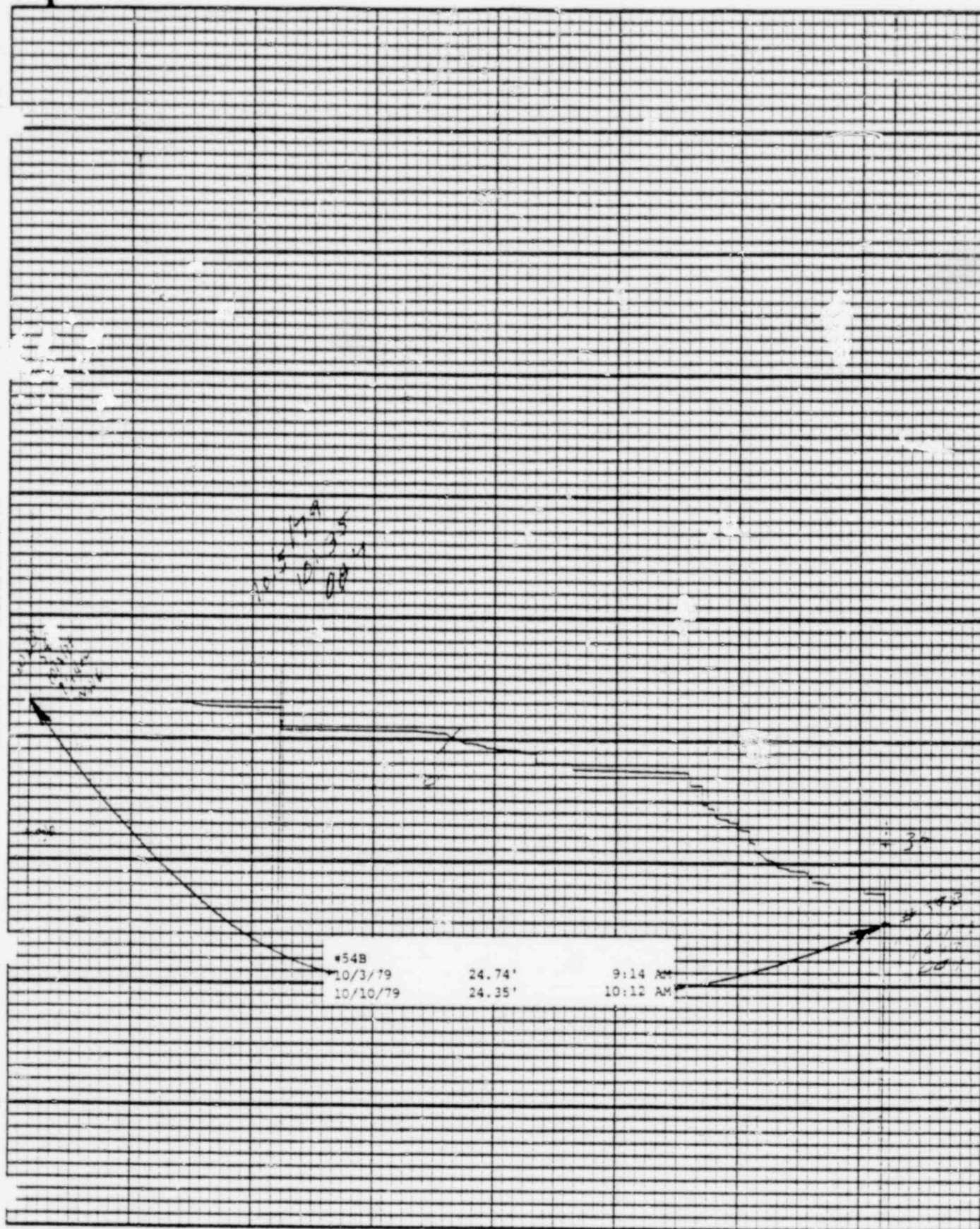
1276 055



Leupold &amp; Stevens, Inc., Beaverton, Ore.

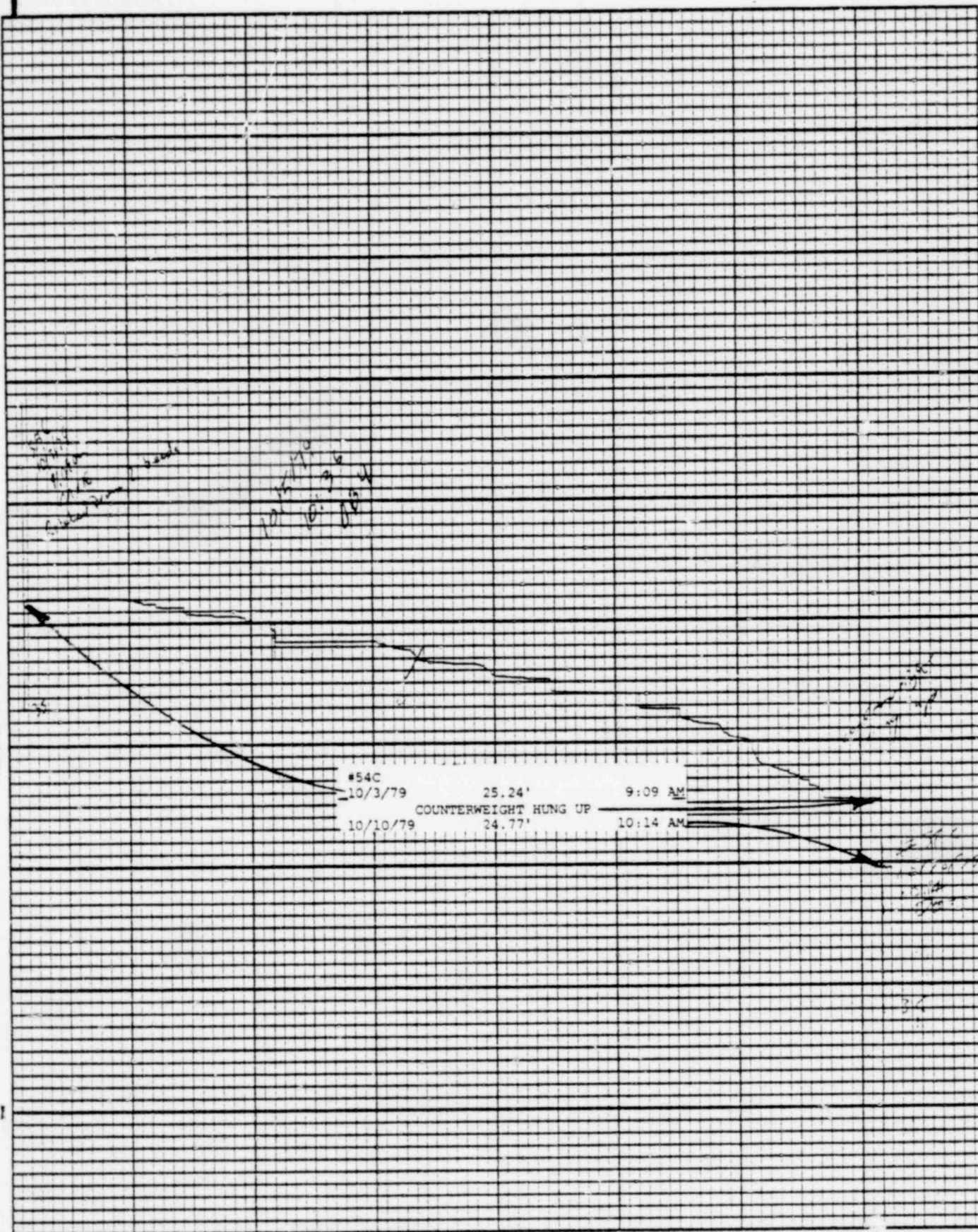
Chart F-1

Stevens Water Level Recorder — Type F



POOR ORIGINAL

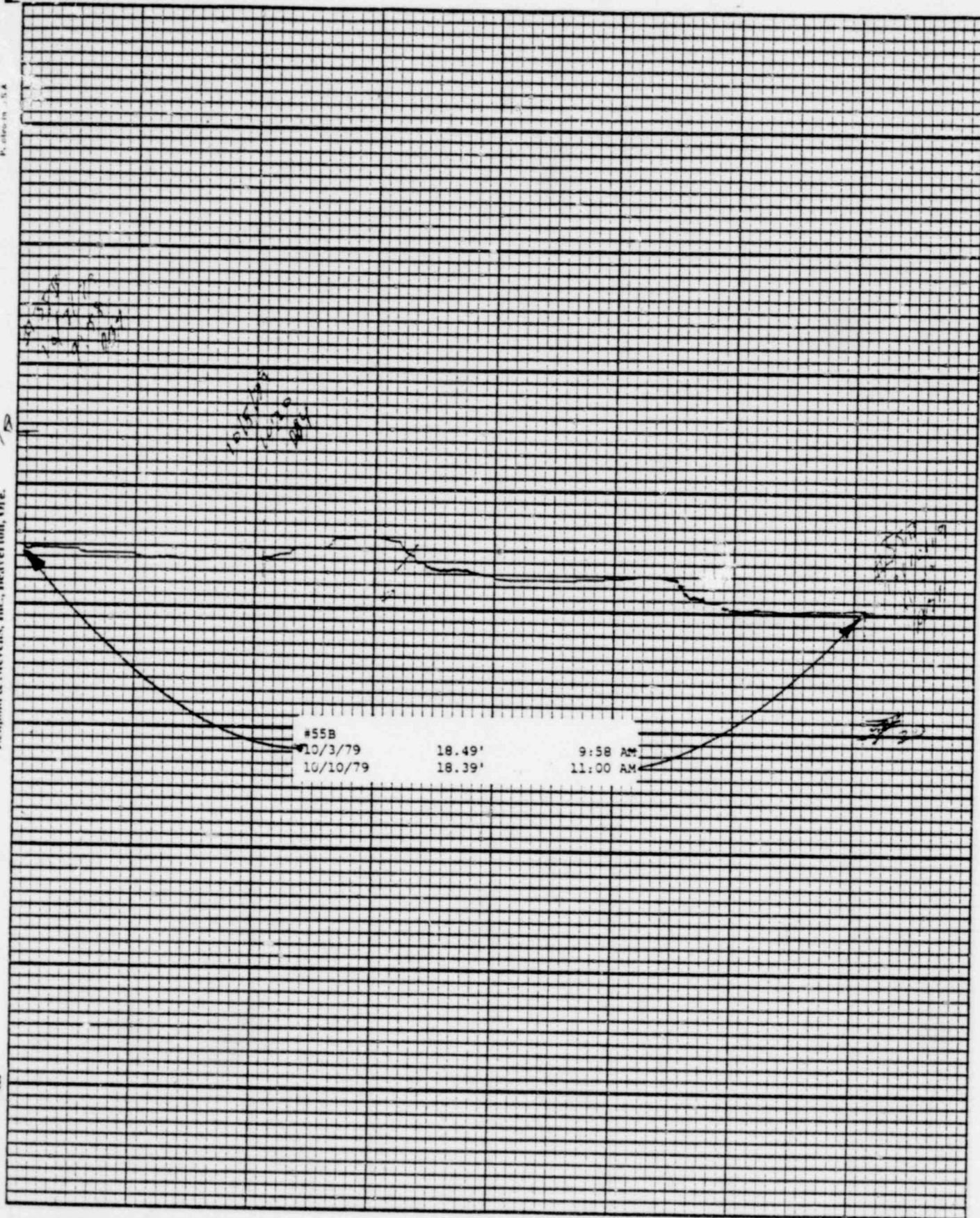
1276 056



POOR ORIGINAL

1276 57

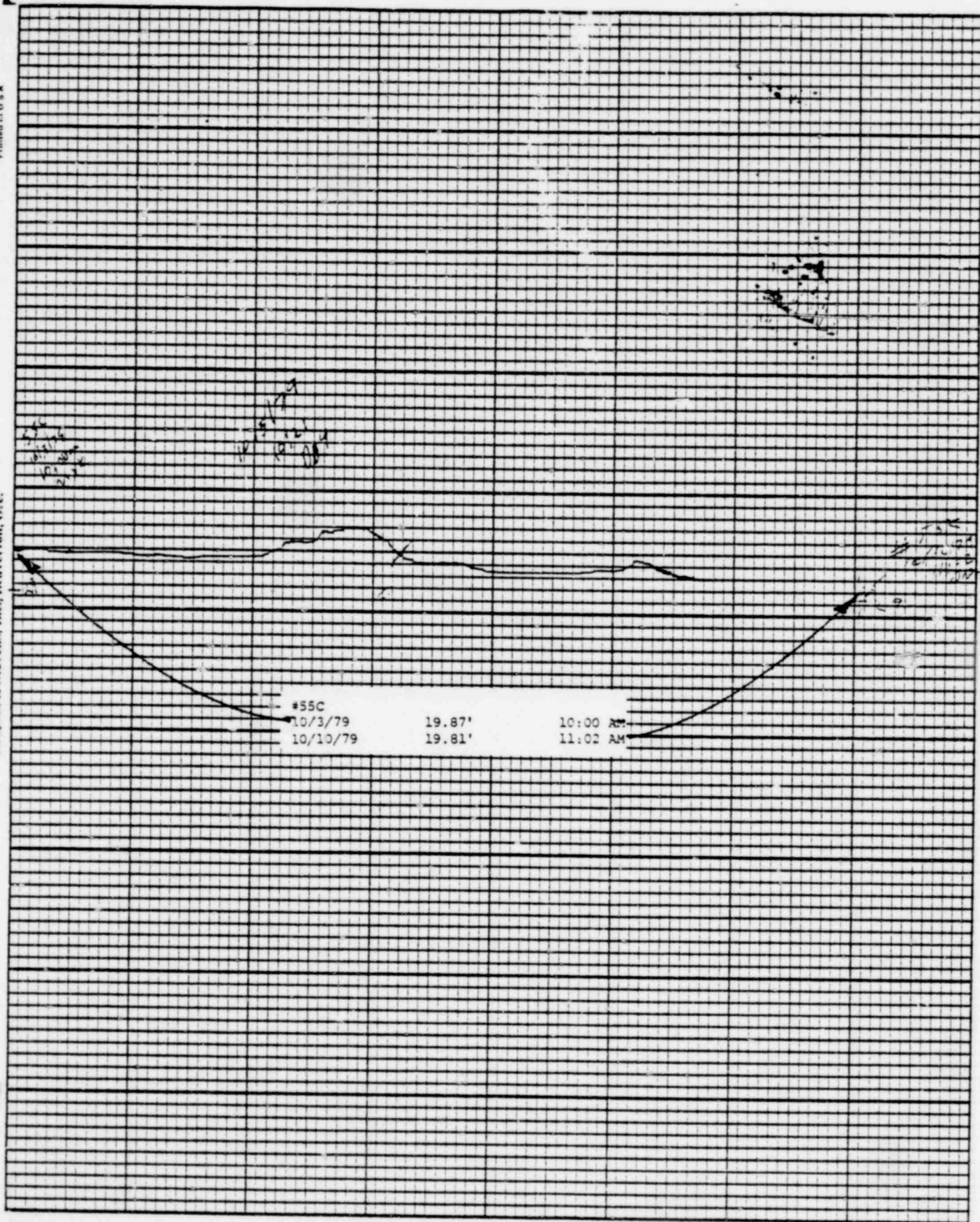




POOR ORIGINAL

1276 058





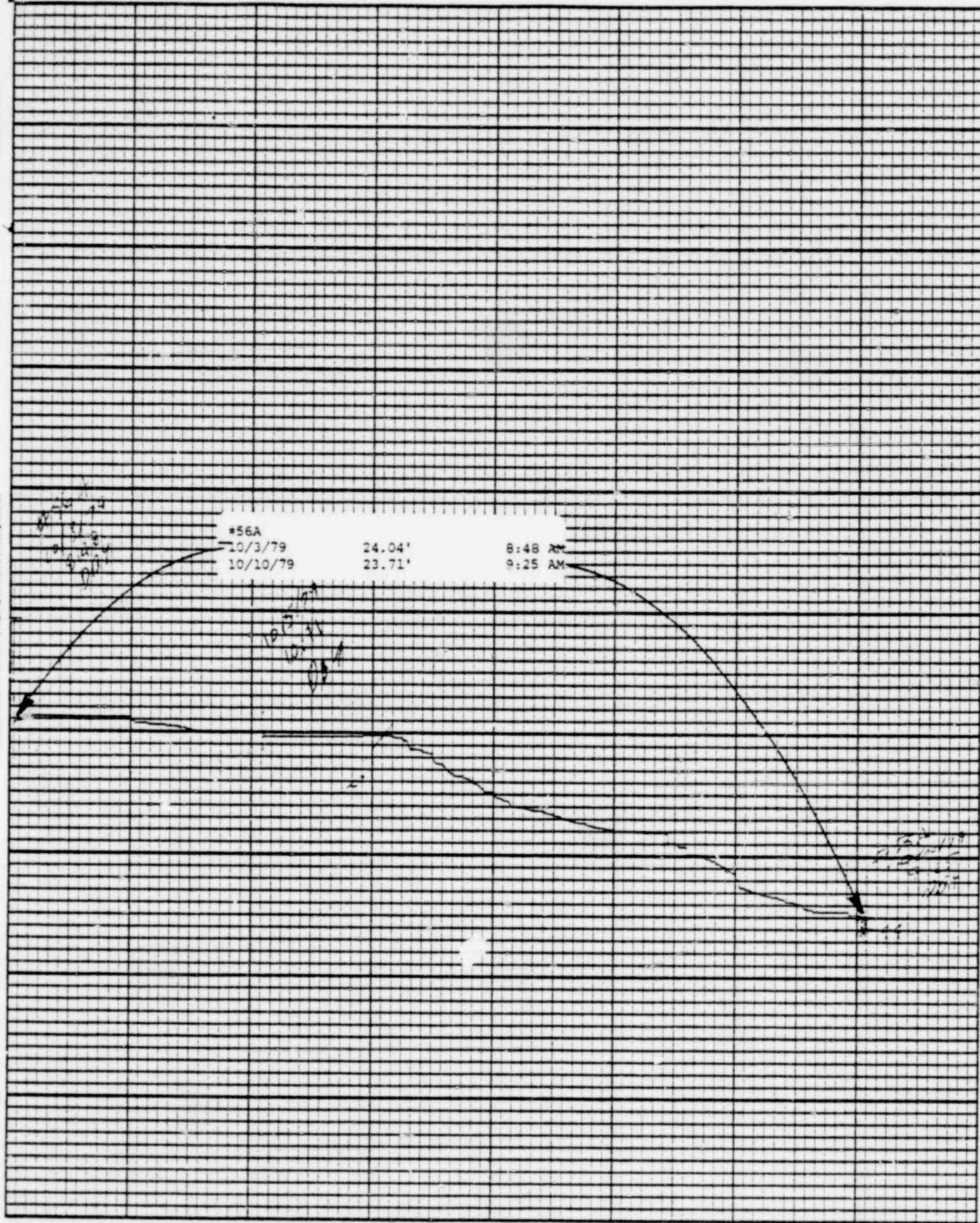
POOR ORIGINAL

1276 059

Lemond & Stevens, Inc., Beaverlton, Ore.

(S)

Stevens Water Level Recorder — Type F

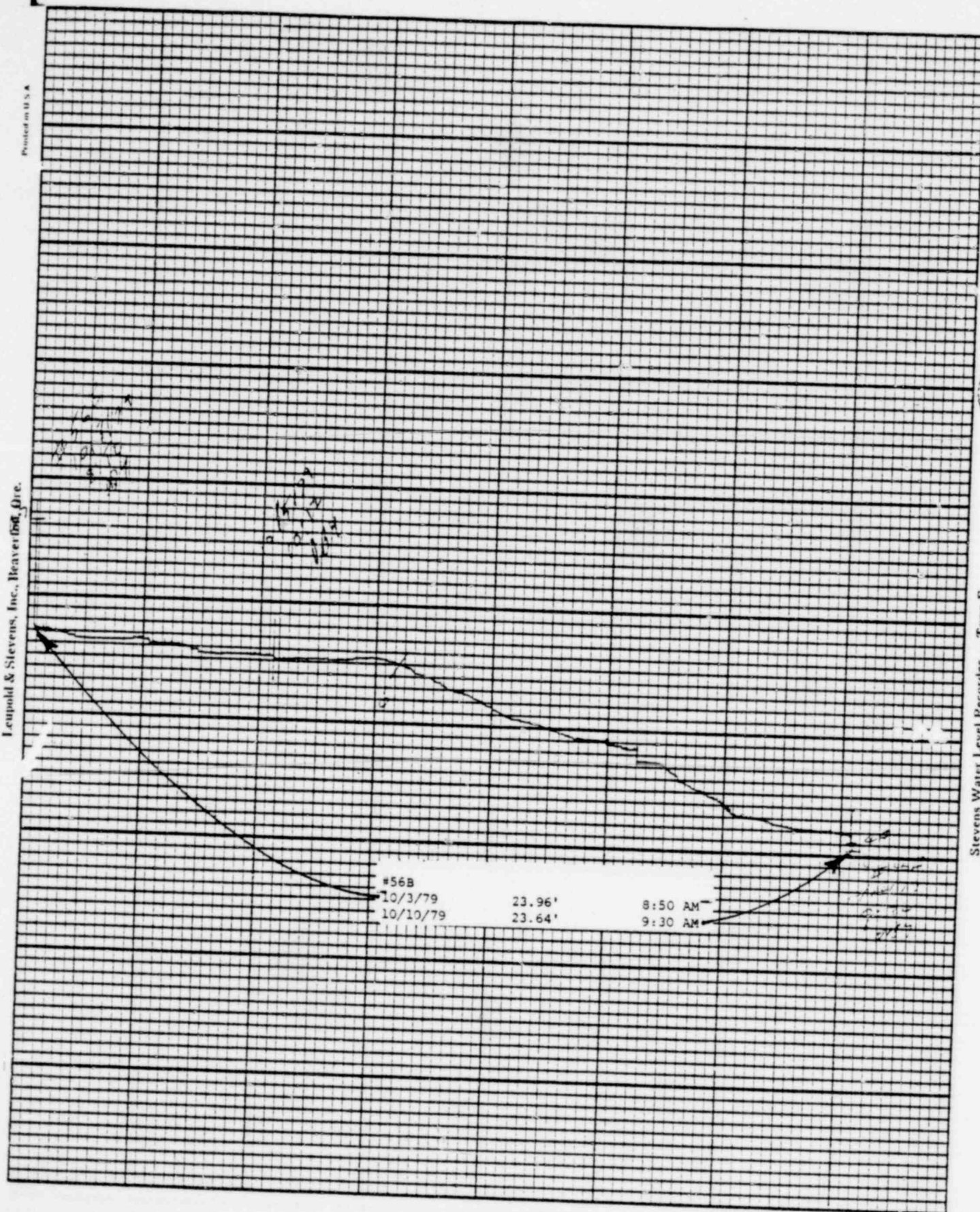


POOR ORIGINAL

1276 060



Stevens Water Level Recorder — Type F



POOR ORIGINAL

1276 061

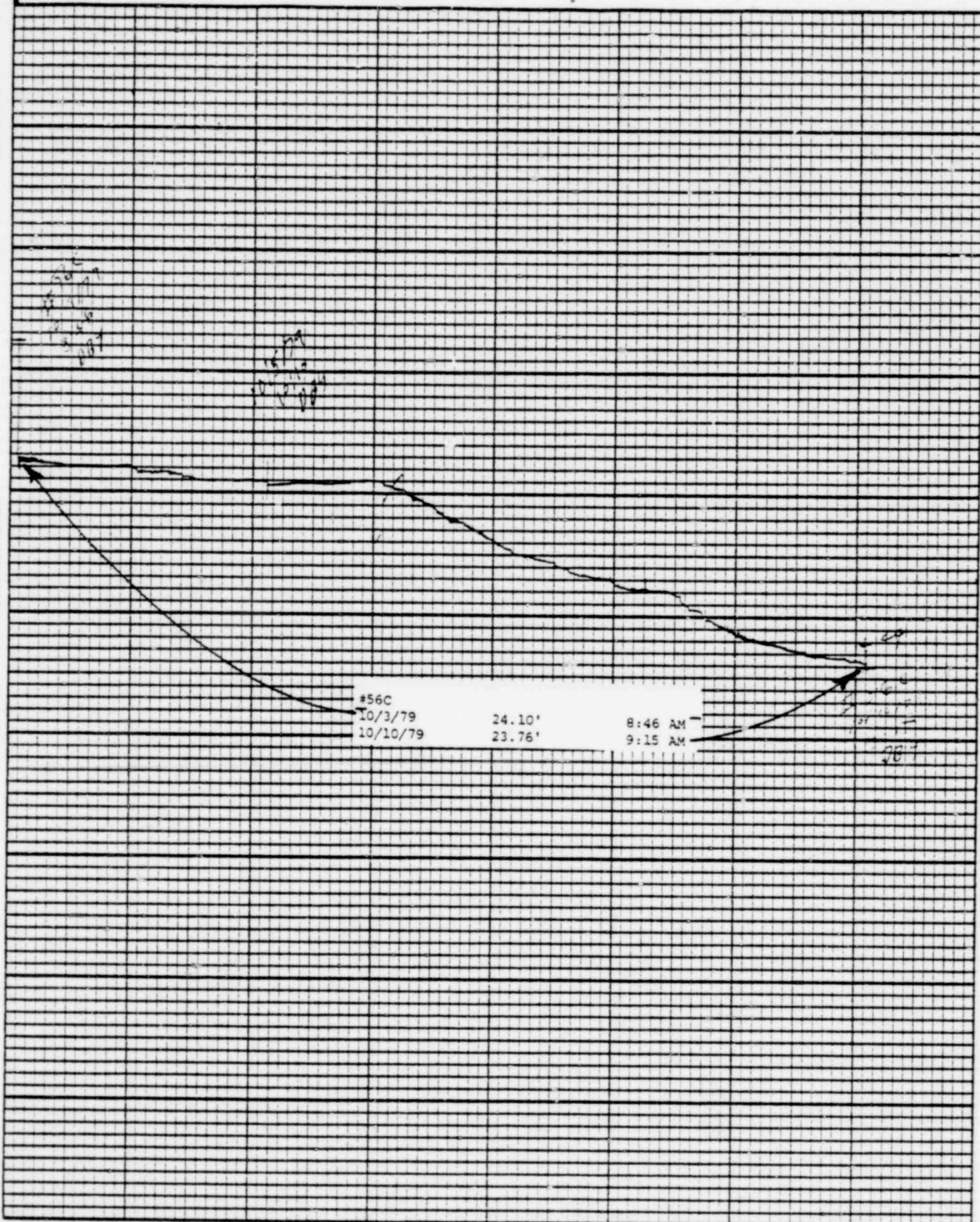
Printed in U.S.A.

Leupold & Stevens, Inc., Beaverton, Ore.

Chart F-1

5

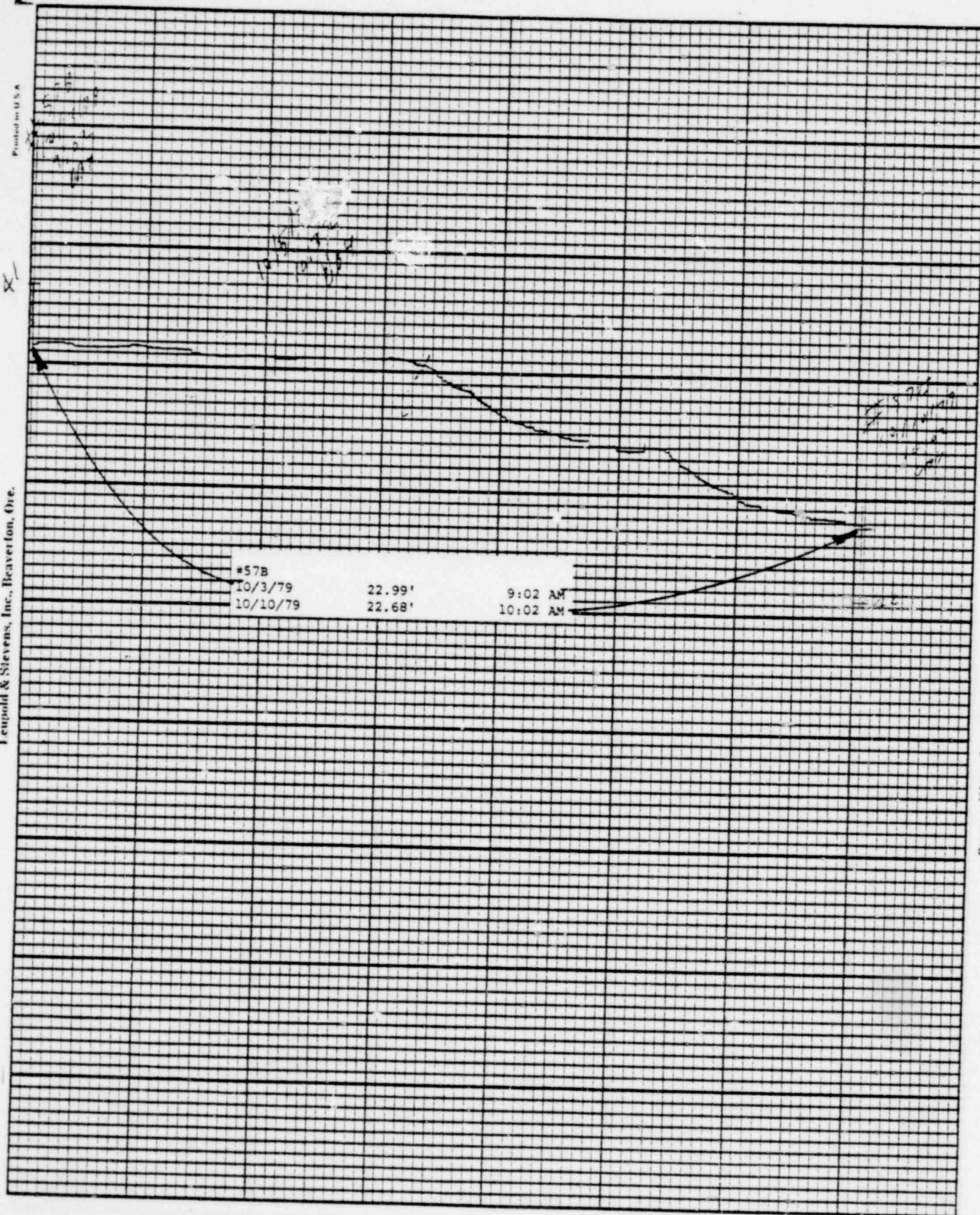
Stevens Water Level Recorder — Type F



POOR ORIGINAL

1276 062

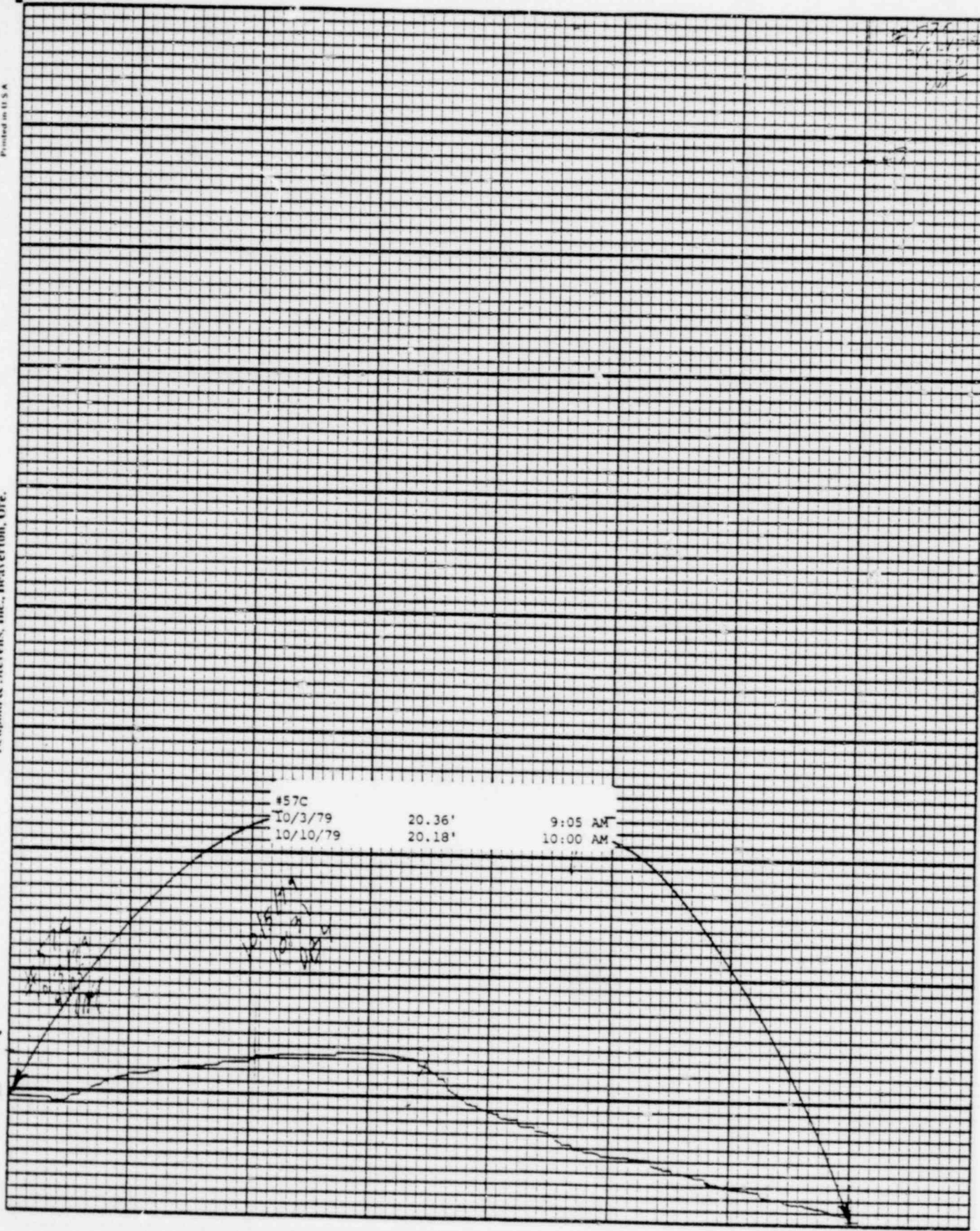




Stevens Water Level Recorder — Type F

POOR ORIGINAL

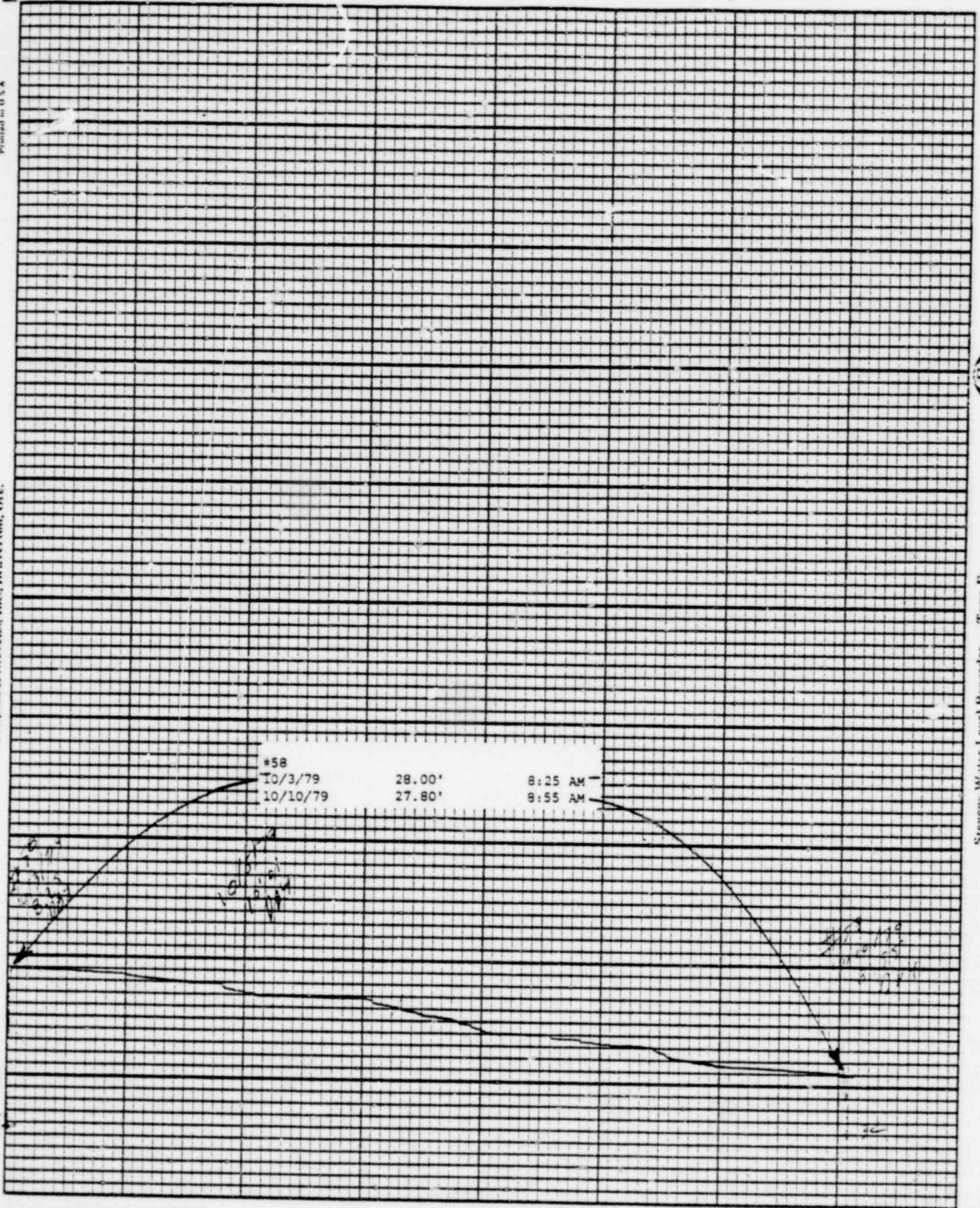
1276 063



POOR ORIGINAL

1276 964





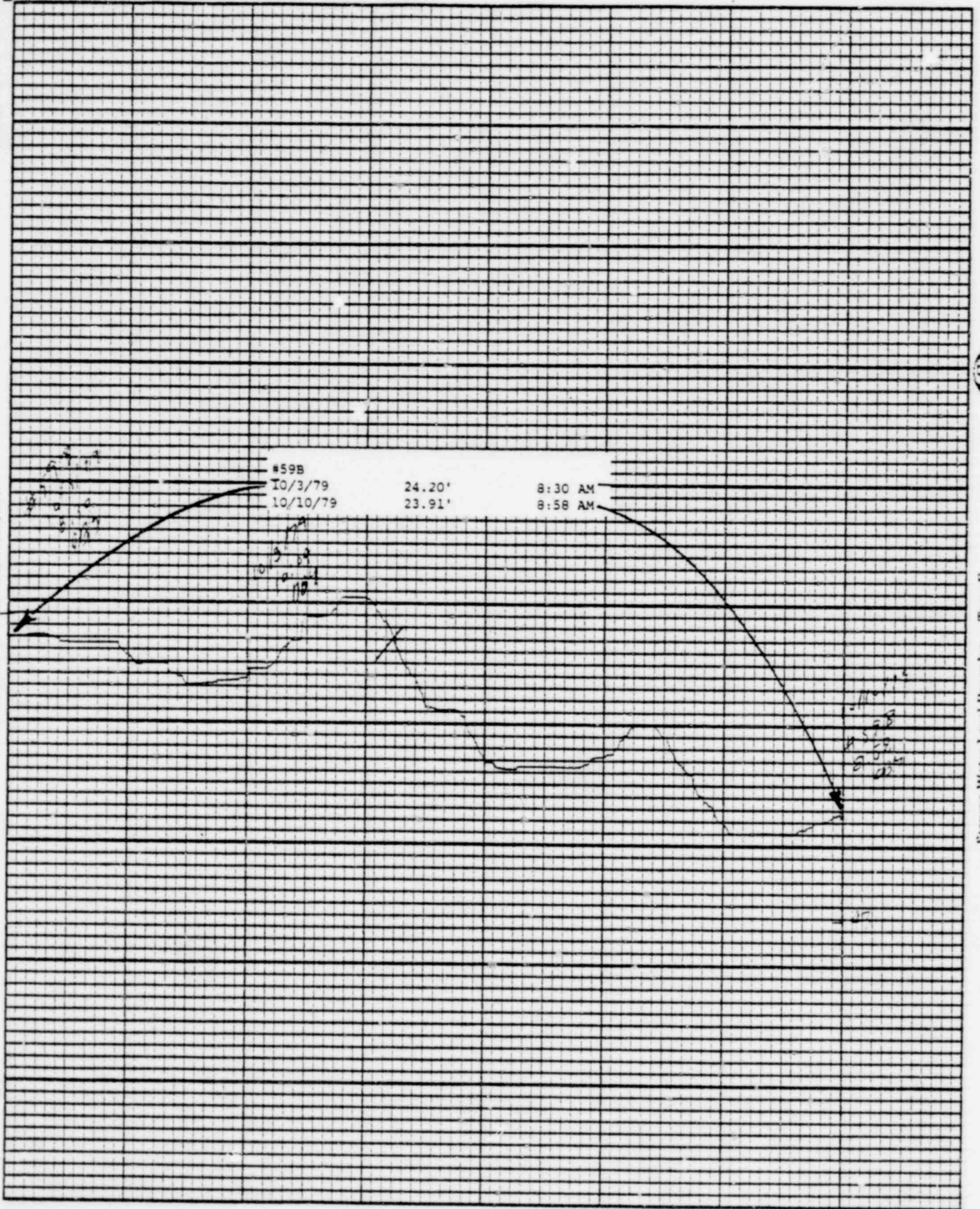
POOR ORIGINAL

1276 065

Leupold & Stevens, Inc., Beaverlton, Ore.

Stevens Water Level Recorder — Type F

(S)



POOR ORIGINAL

1276 066



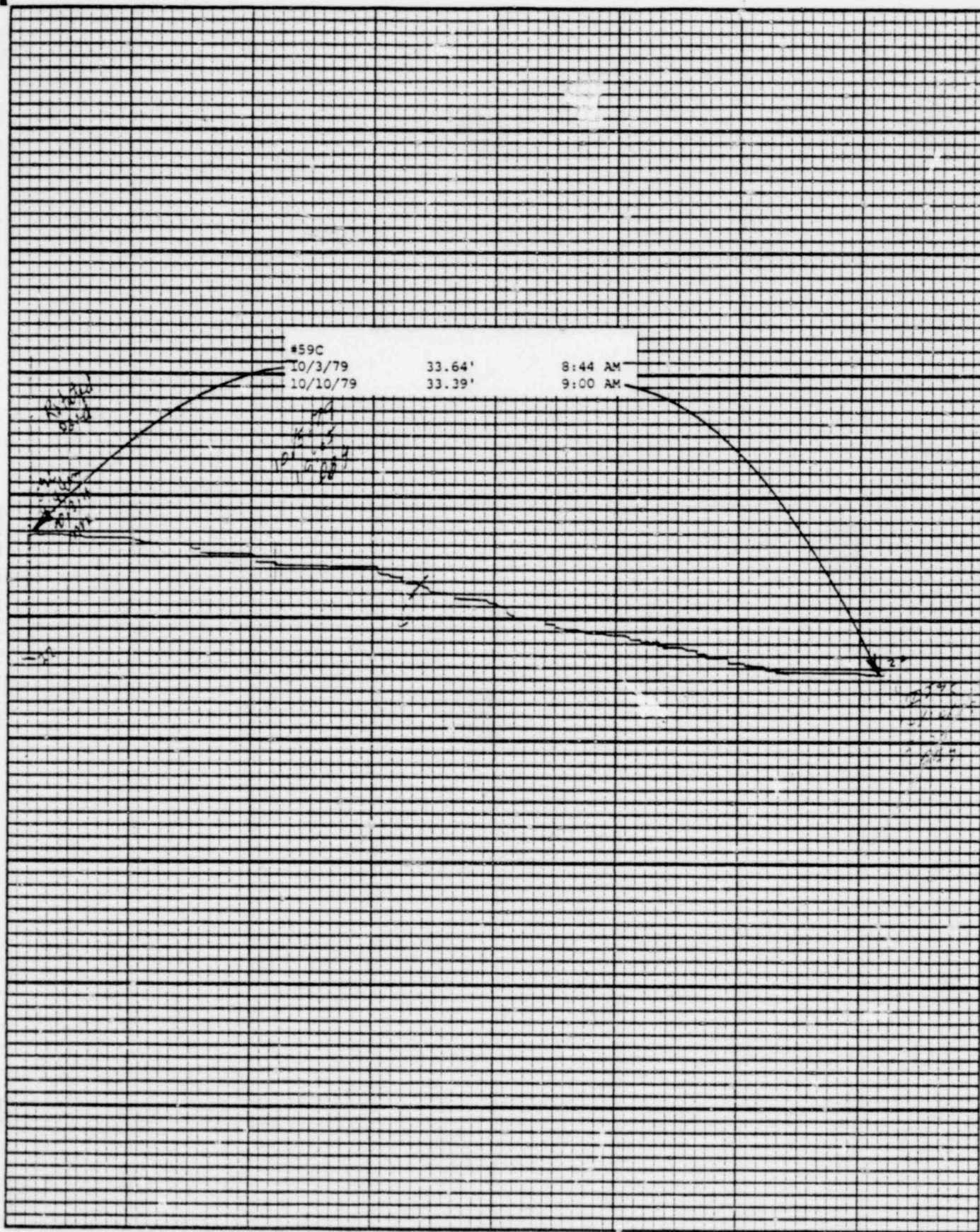
Printed in U.S.A.

Leupold & Stevens, Inc., Beaverton, Ore.

Chart F-1



Stevens Water Level Recorder — Type F



POOR ORIGINAL

1276 067

BAILLY WELLS WITHOUT RECORDERS

10/10/79

<u>WELL #</u>	<u>WATER ELEVATION IN FEET</u>
62	31.64
65	27.16
67	22.27
72	10.02
73	11.36
74	14.52

DBY:bd

1276 068



POND LEVELS

<u>POND</u>	<u>10/10/79</u>
1	27.65'
2	30.29'
3	27.95'
4	23.36'
5	22.79'
6	32.97'
7	DRY
8	DRY
9	28.57'
10	39.27'
11	39.62'
12	36.22'*
13	36.87'

\* Previous data of Pond #12 on 9/19/79 indicated an elevation of 26.63'. This should have read 36.63'.

DBY:bd

1276 069

PNEUMATIC PRESSURE TRANSDUCERS

10/10/79

<u>TRANSDUCER</u>	<u>WATER ELEVATION IN FEET</u>
P-1	11.0
P-2	10.2
P-3	6.4
P-4	12.1
P-5	12.4
P-6	15.1

DBY:bd

1276 070



WATER METER READINGS

<u>DATE</u>	<u>TIME</u>	<u>METER READING (GALLONS)</u>	<u>INSTANTANEOUS FLOW RATE (GPM)</u>
-------------	-------------	----------------------------------------	------------------------------------------

Sump Pump Discharge

10/10/79	1:25 PM	306,145,000	217
----------	---------	-------------	-----

Well Point Discharge

10/10/79	1:25 PM	9,025,589	NOT IN USE
----------	---------	-----------	------------

DBY:bd

1276 071