



Northern Indiana Public Service Company

Nuclear Staff
RR # 3, Box 501
Chesterton, IN 46304
September 28, 1979

BAILLY GENERATING STATION N-1

Mr. Ronald Ballard
Environmental Projects Branch No. 1
Directorate of Licensing
U.S. Nuclear Regulatory Commission
Washington, D.C. 20545

RE: NORTHERN INDIANA PUBLIC SERVICE COMPANY
BAILLY GENERATING STATION NUCLEAR 1
DOCKET 50-367

Dear Mr. Ballard:

Enclosed herewith are ten (10) copies of the following:

1. Well Charts for 9-12-79 - 9-19-79
2. Bailly Wells Without Recorders for 9-12-79 - 9-19-79
3. Pond Levels for 9-12-79 - 9-19-79
4. Pneumatic Pressure Transducers for 9-12-79 - 9-19-79
5. Water Meter Readings for 9-19-79

Sincerely,

R. J. Bohn
Manager, Nuclear Staff

OK
DBY:lu

Enclosures

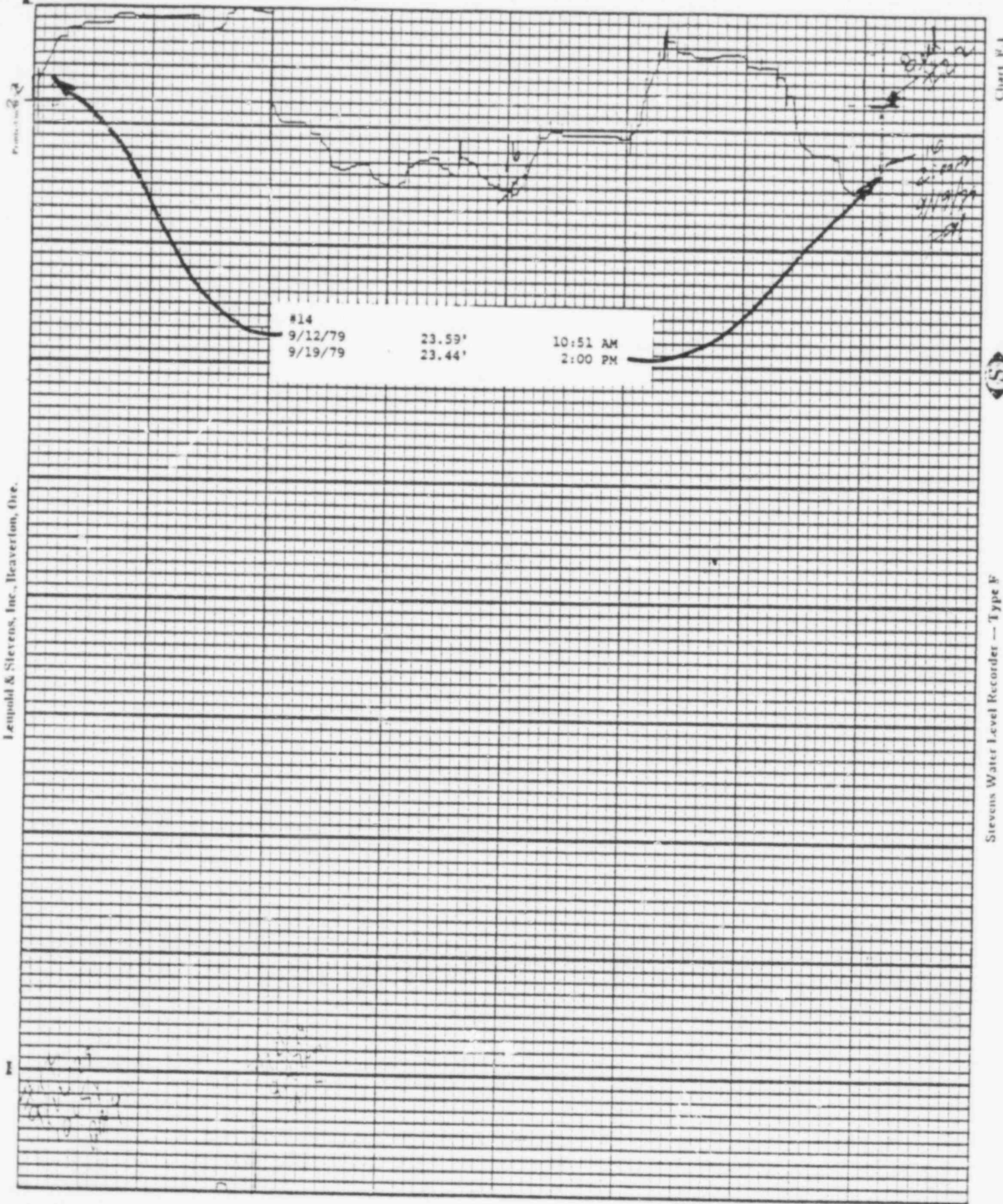
File: Ground Water Observation Monitoring Wells

1076 145

*Do not
ES-11*

7910110 323

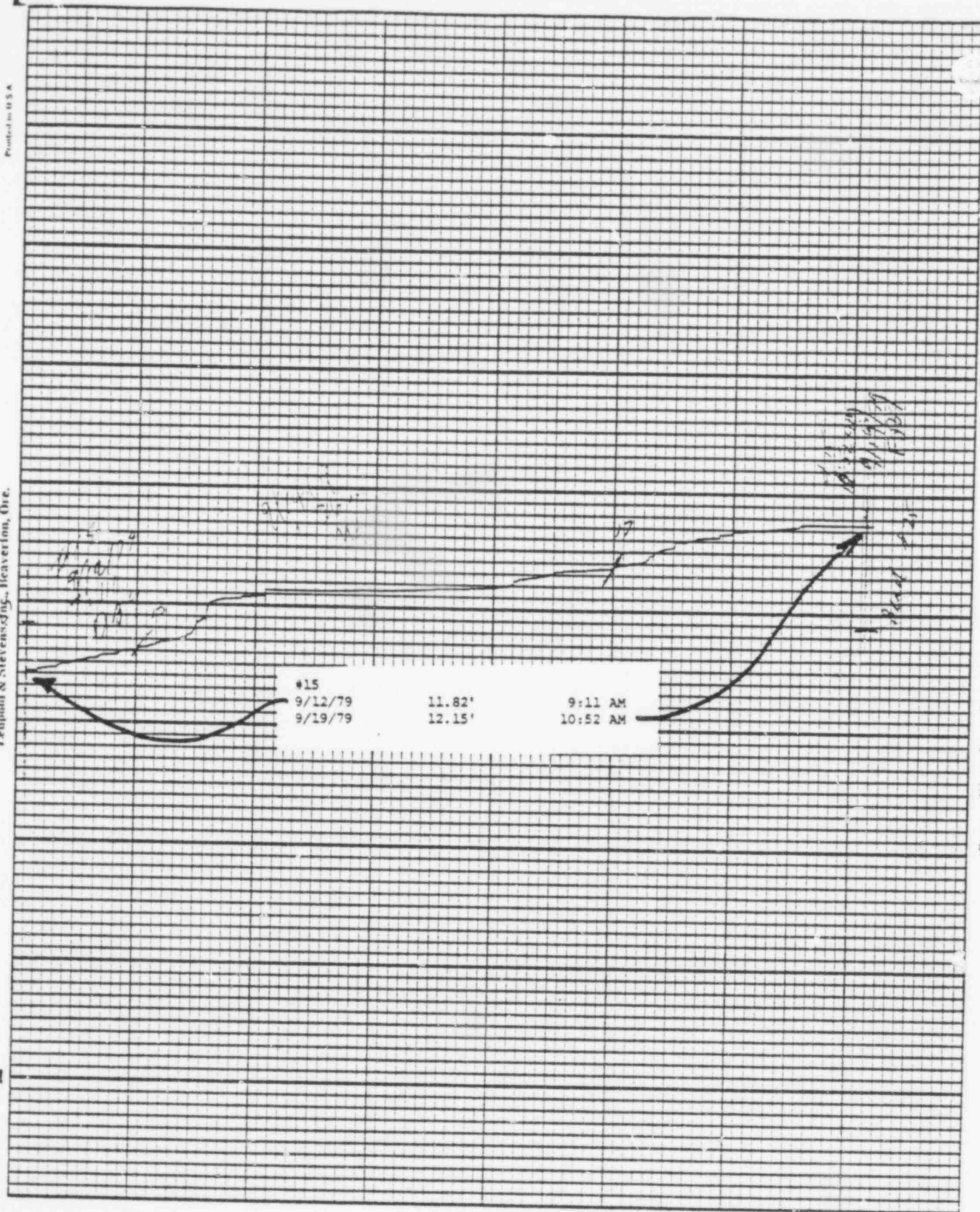
Lempold & Stevens, Inc., Beaverton, Ore.



Stevens Water Level Recorder — Type F

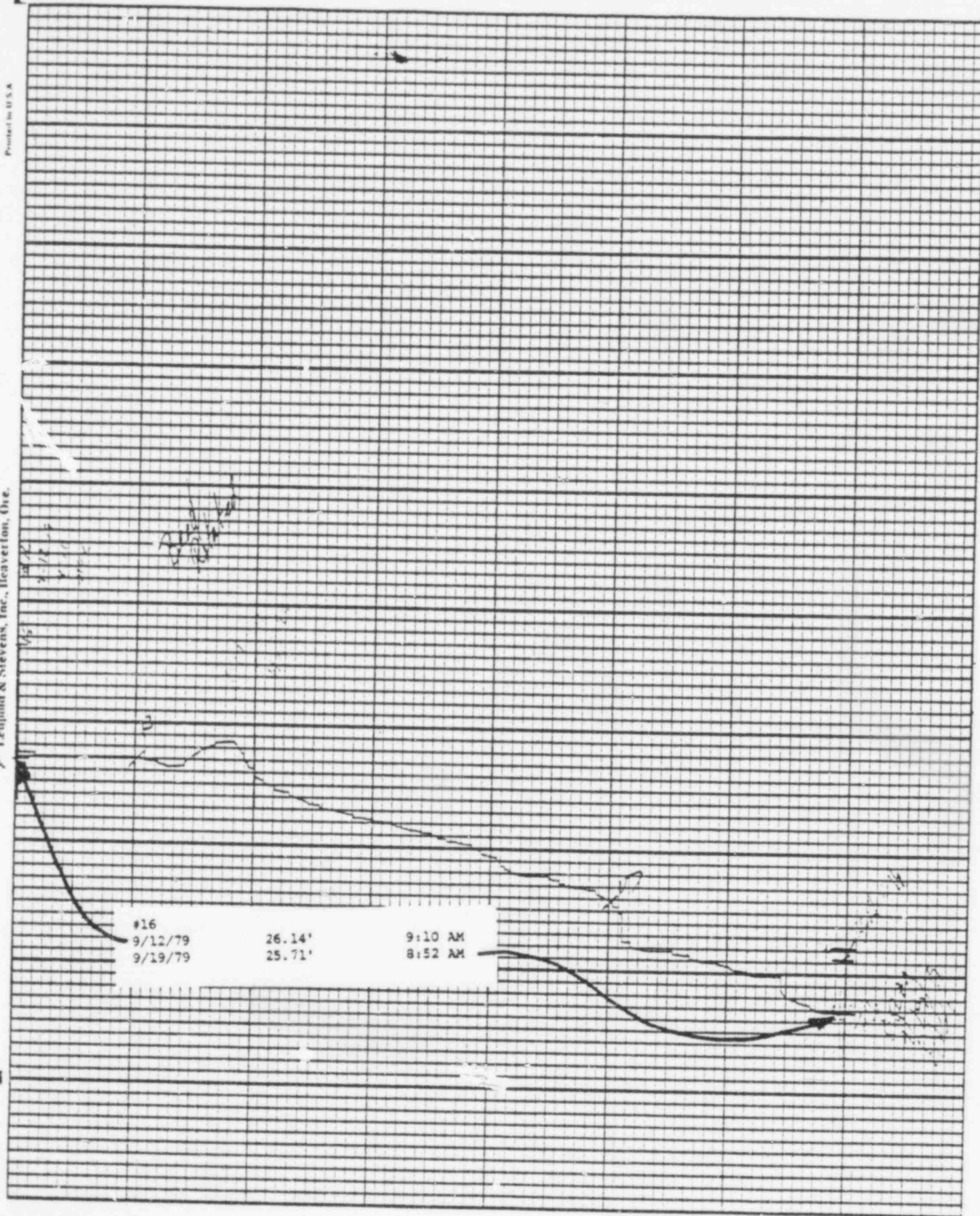
POOR ORIGINAL

1076 146



POOR ORIGINAL

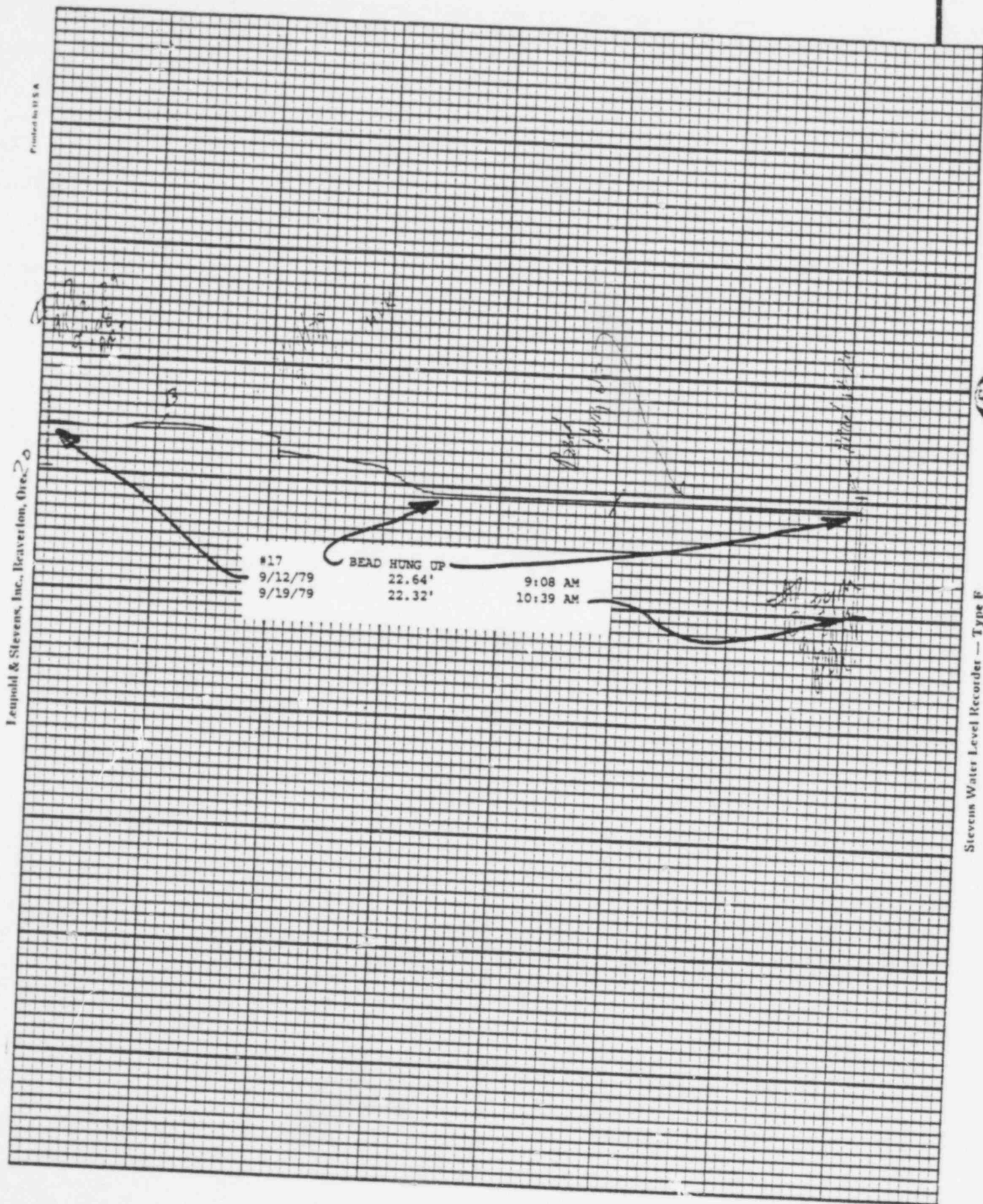
1076 147



POOR ORIGINAL

1076 148

Leupold & Stevens, Inc., Beaverton, Ore. 97005



Stevens Water Level Recorder — Type F

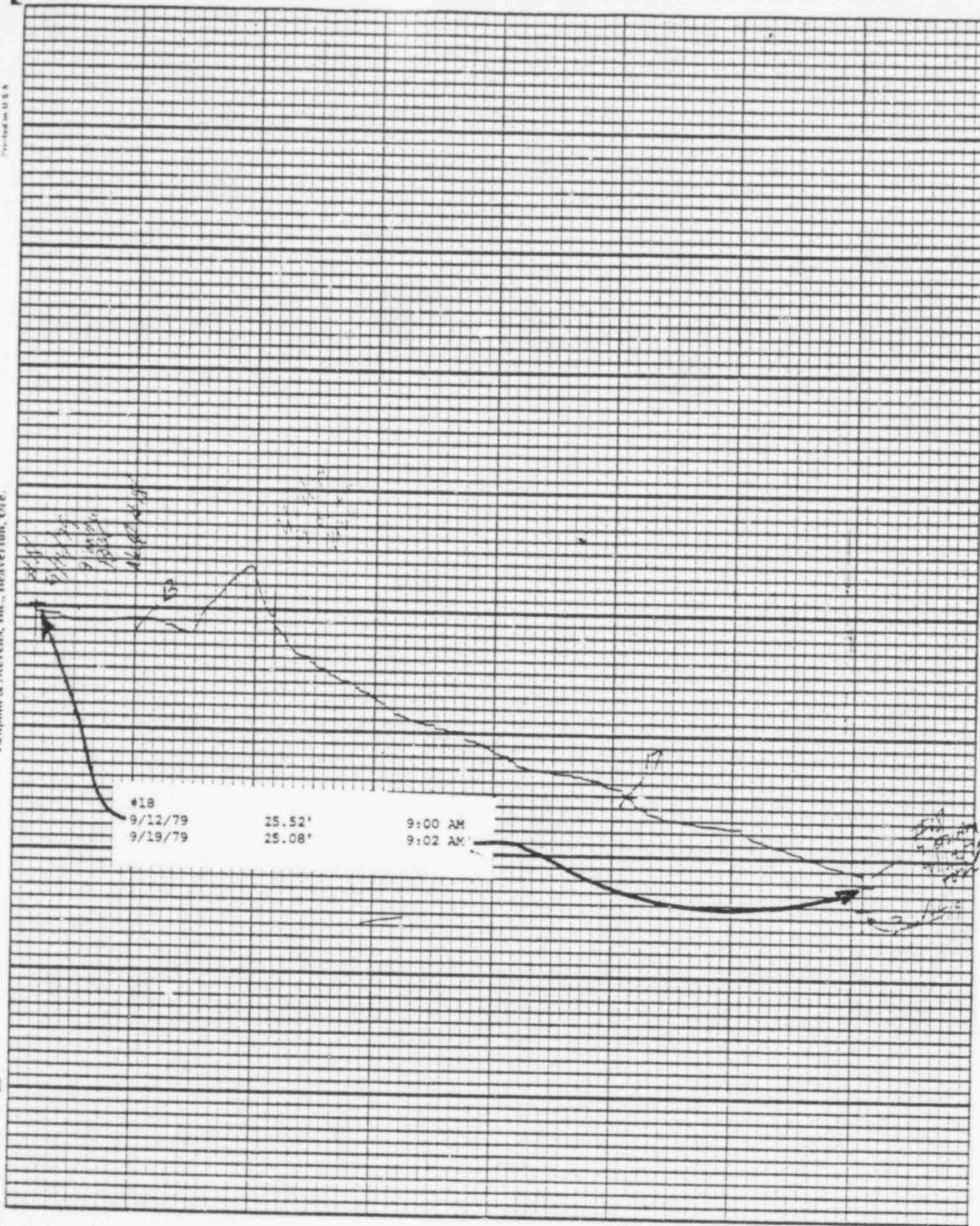
ENTRANCE

POOR ORIGINAL

1076 149

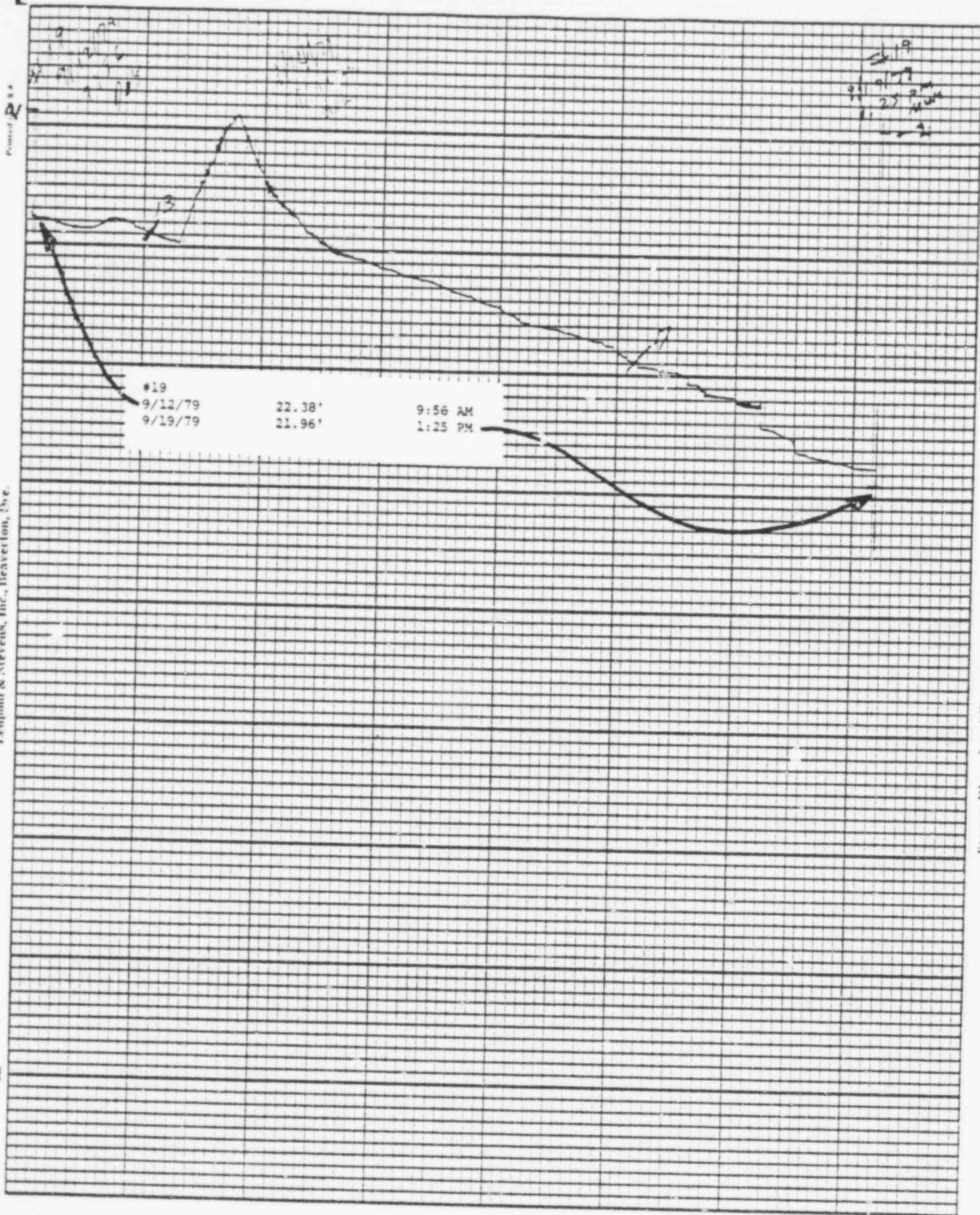
Leopold & Stevens, Inc., Benavon, Ore.

Stevens Water Level Recorder — Type F



POOR ORIGINAL

1276 150



POOR ORIGINAL

1076 151

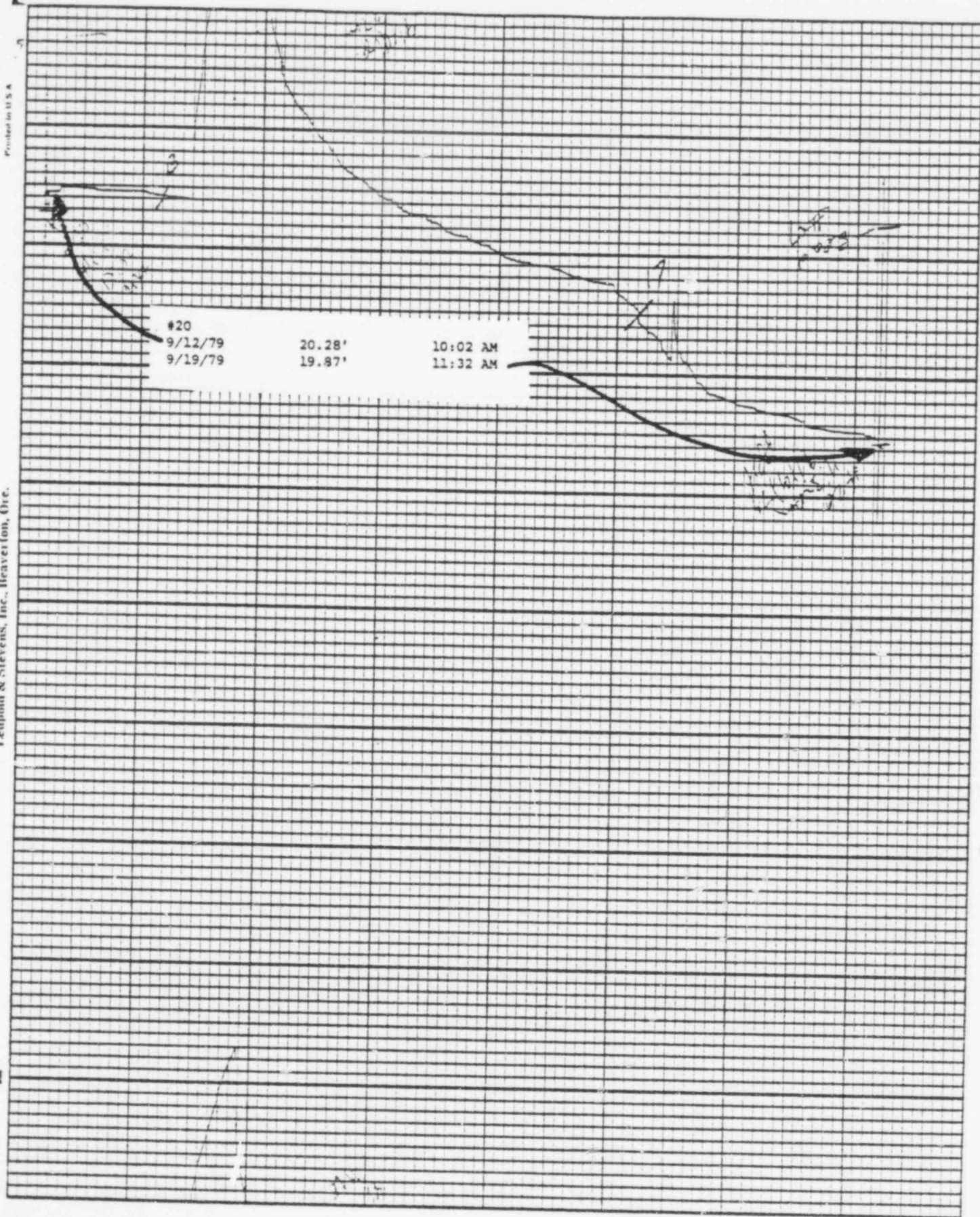
Leupold & Stevens, Inc., Beaver ton, Ore.

Printed in U.S.A.

Chart F-1

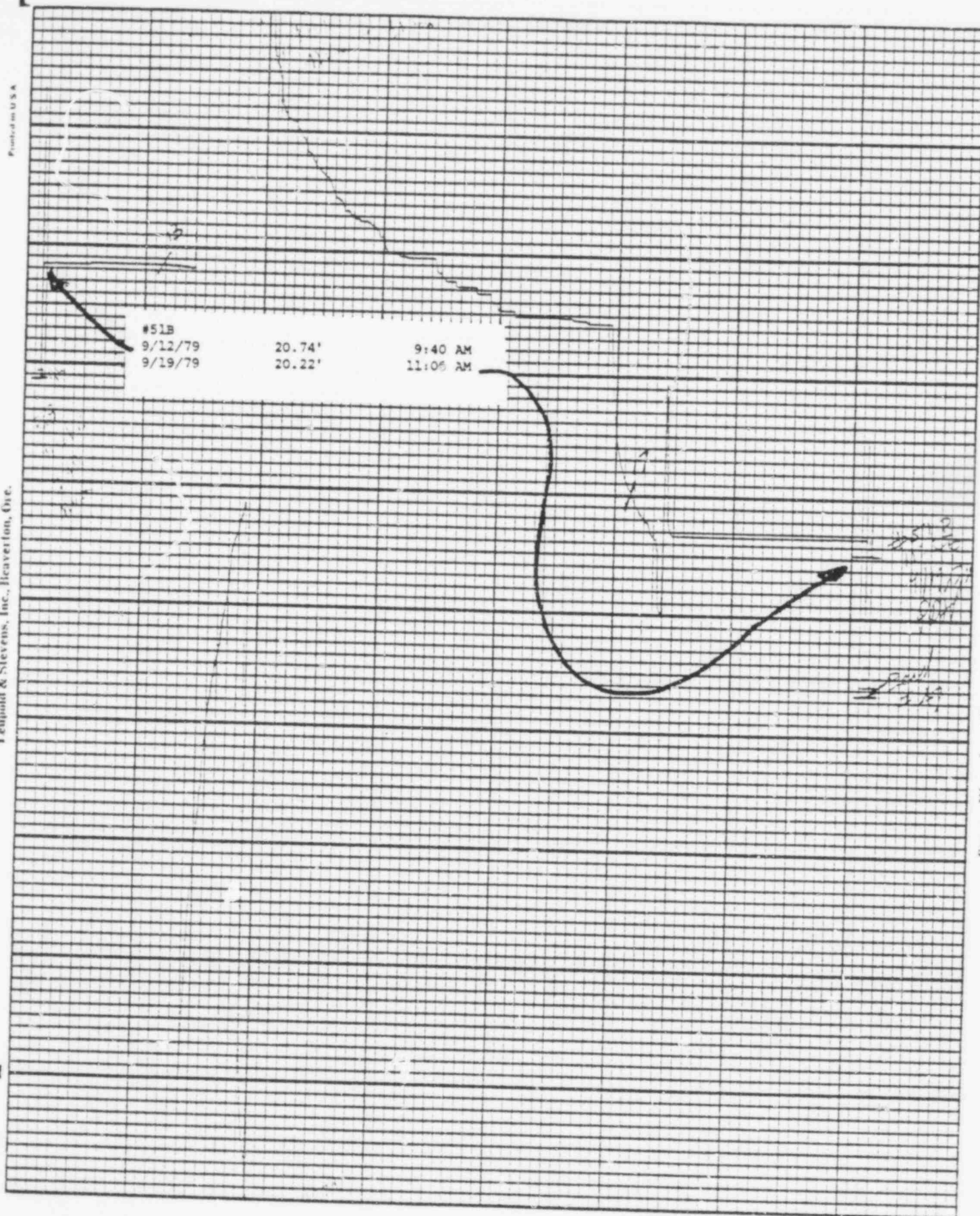
Stevens Water Level Recorder — Type F

ENCLOSURE



POOR ORIGINAL

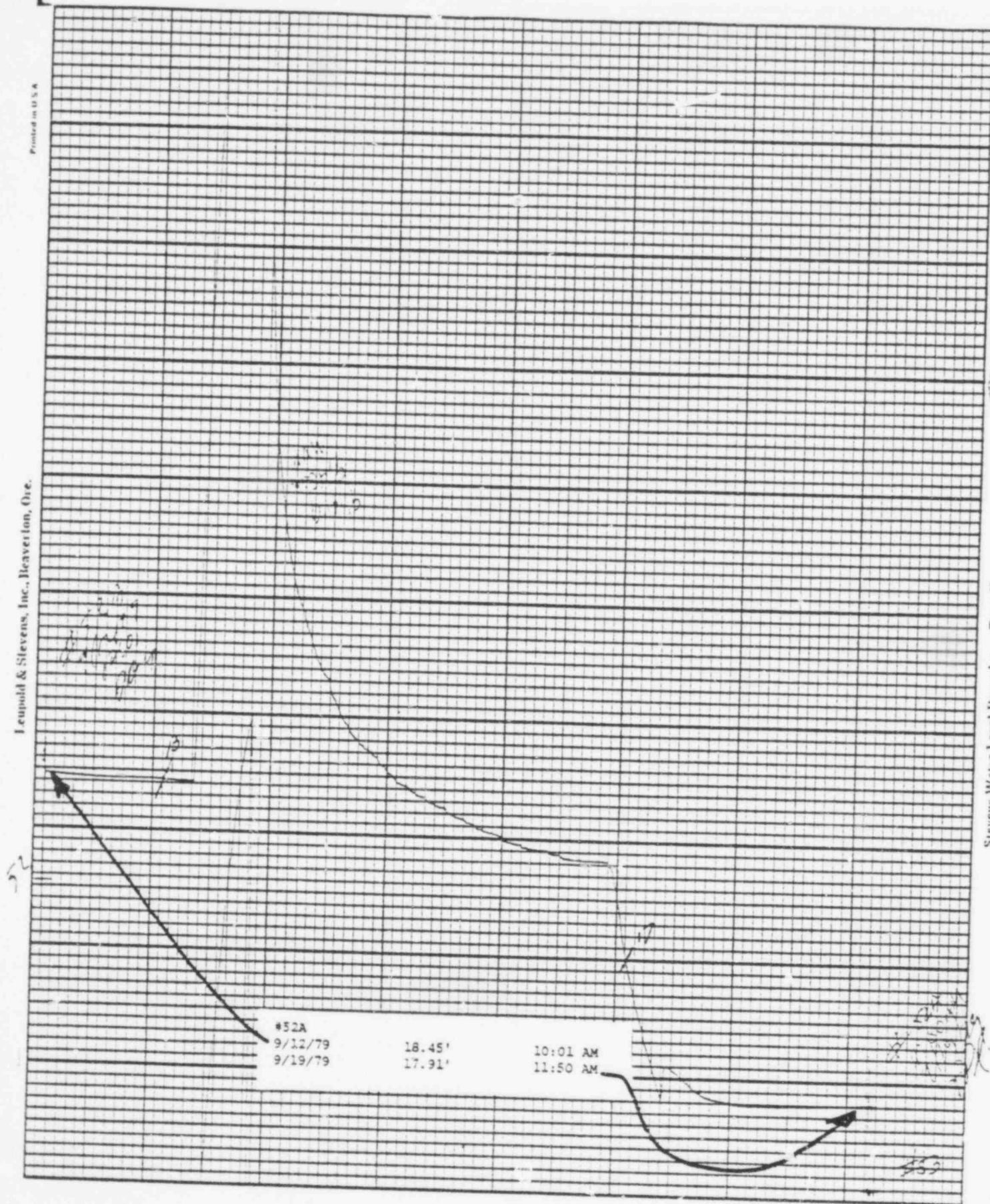
1976 152



POOR ORIGINAL

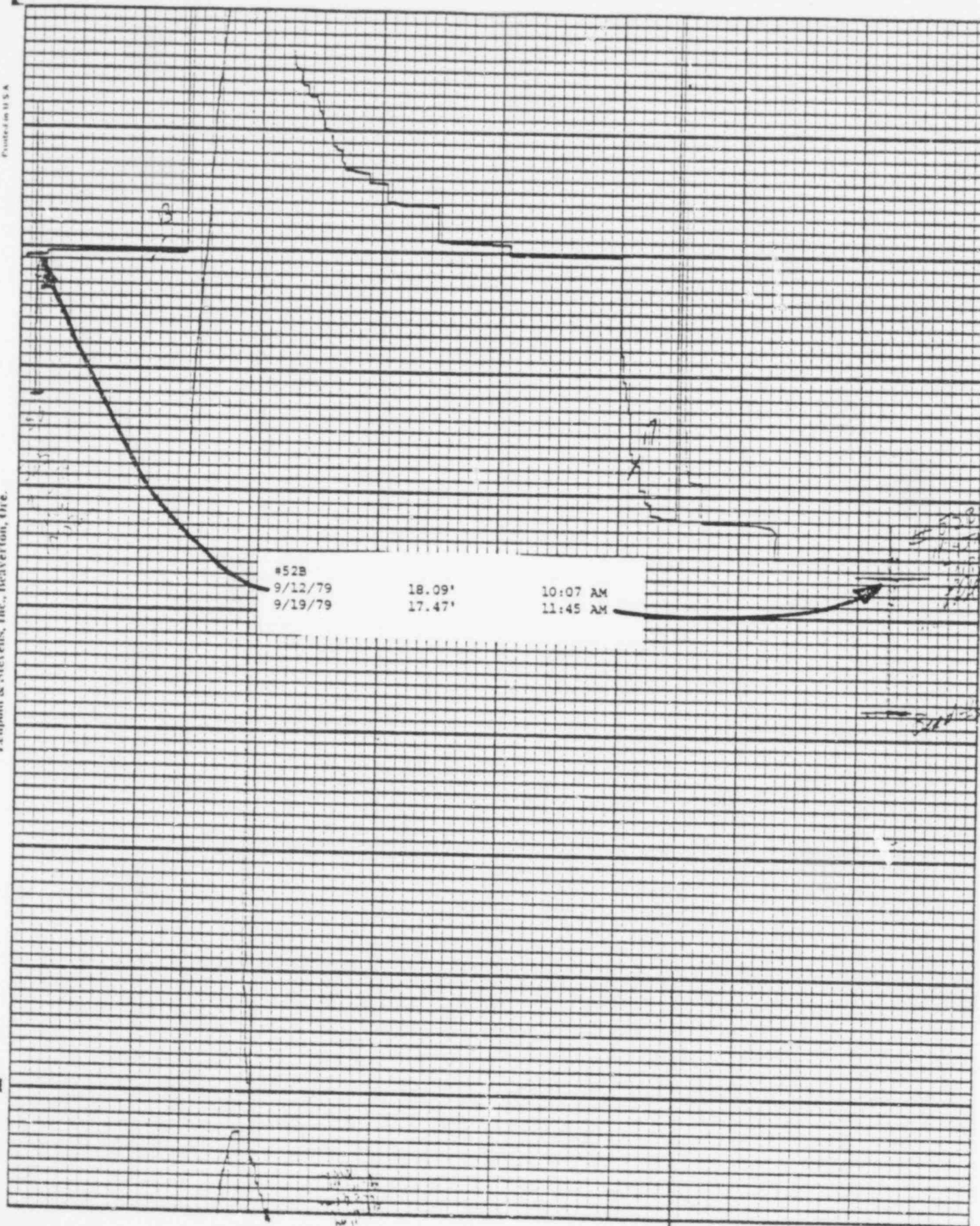
1076 153





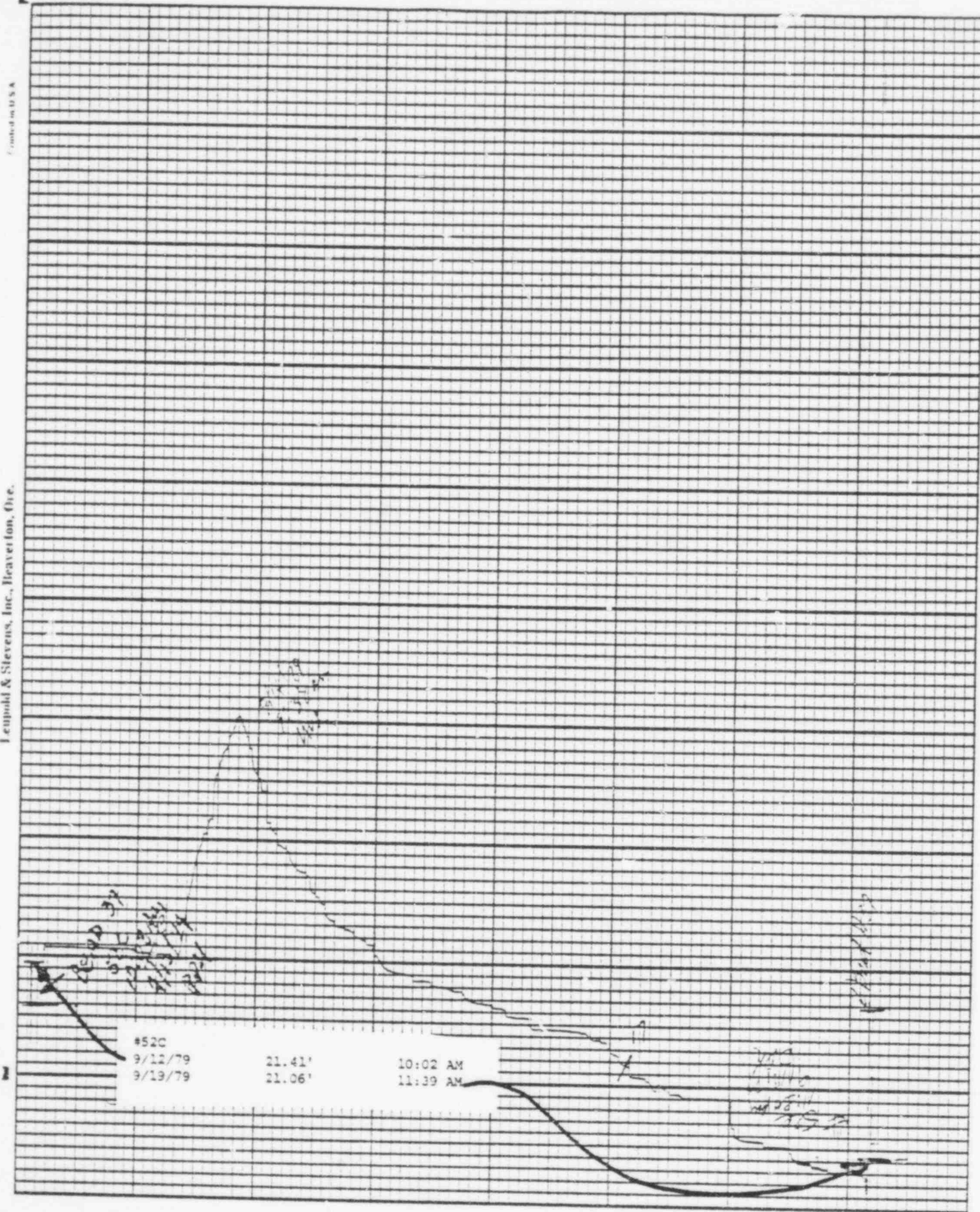
POOR ORIGINAL

1076 155



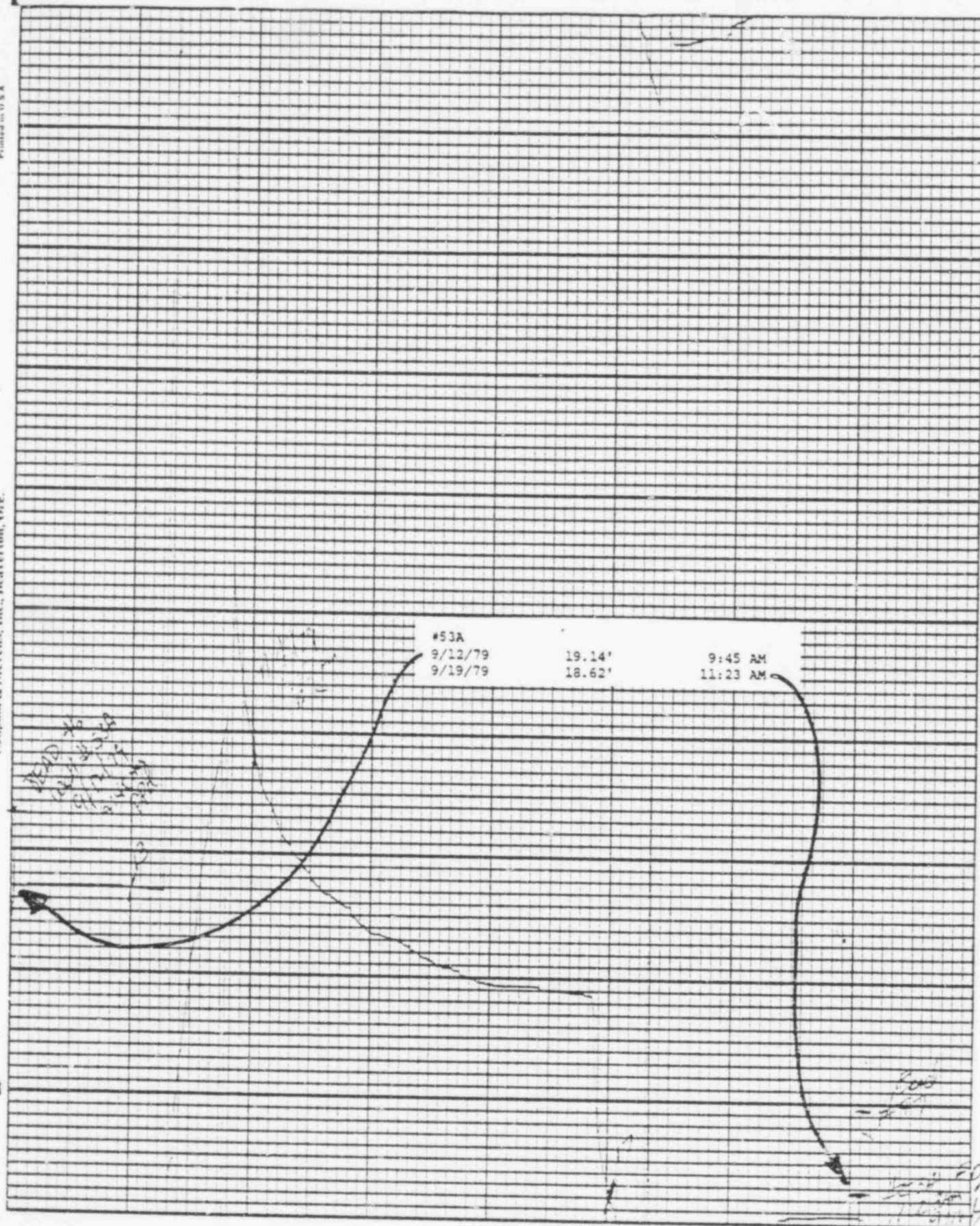
POOR ORIGINAL

T076 156



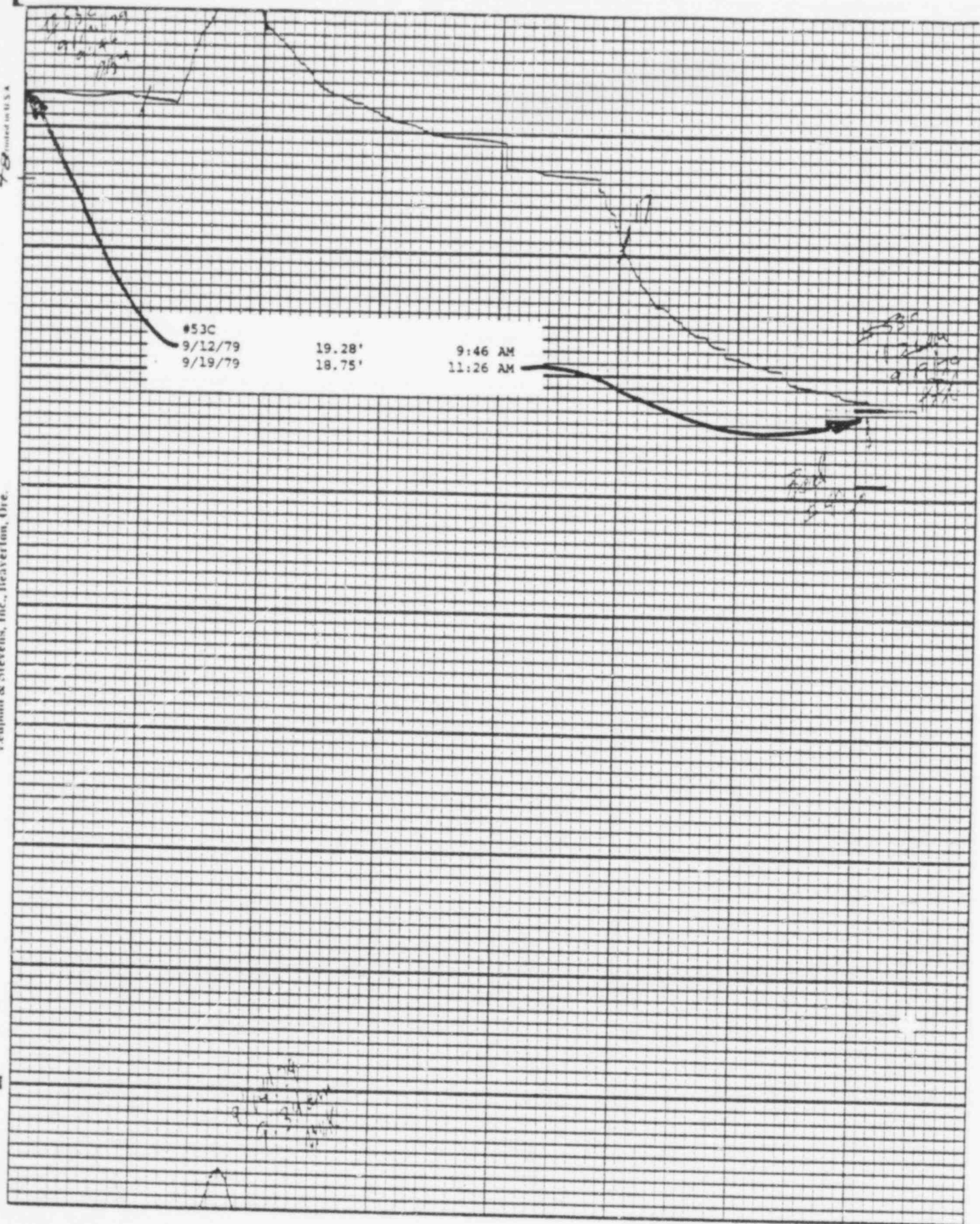
POOR ORIGINAL

1076 157



POOR ORIGINAL

1076 158



POOR ORIGINAL

1076 159

Jenipold & Stevens, Inc., Heaverton, Ore.

Printed in U.S.A.

Chart F-1

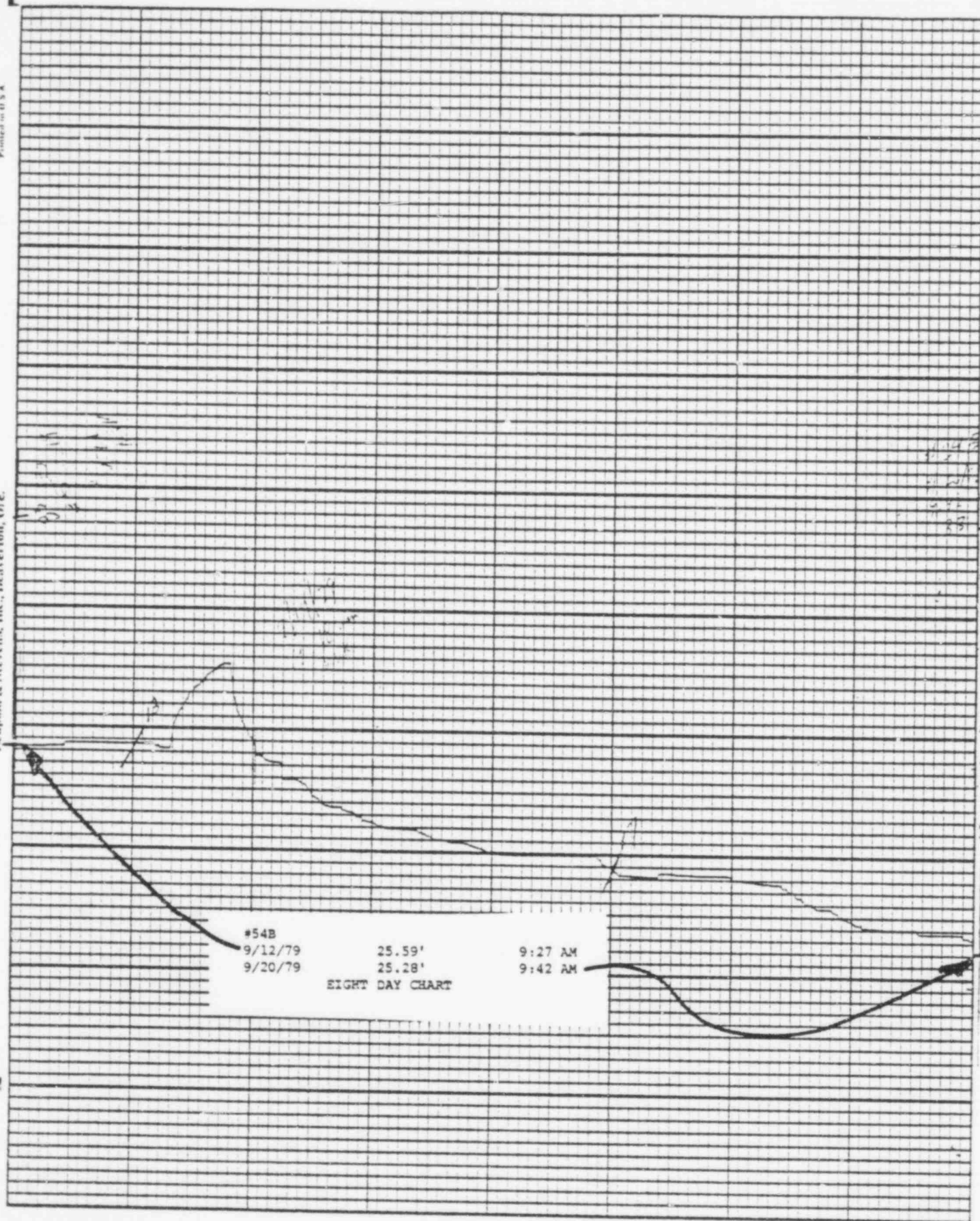
Stevens Water Level Recorder — Type F

(5)

#538		
9/12/79	18.27'	9:49 AM
9/19/79	17.72'	11:18 AM

POOR ORIGINAL

1076 160



POOR ORIGINAL

1076 161

Leupold & Stevens, Inc., Beaverton, Ore.

Stevens Water Level Recorder — Type F

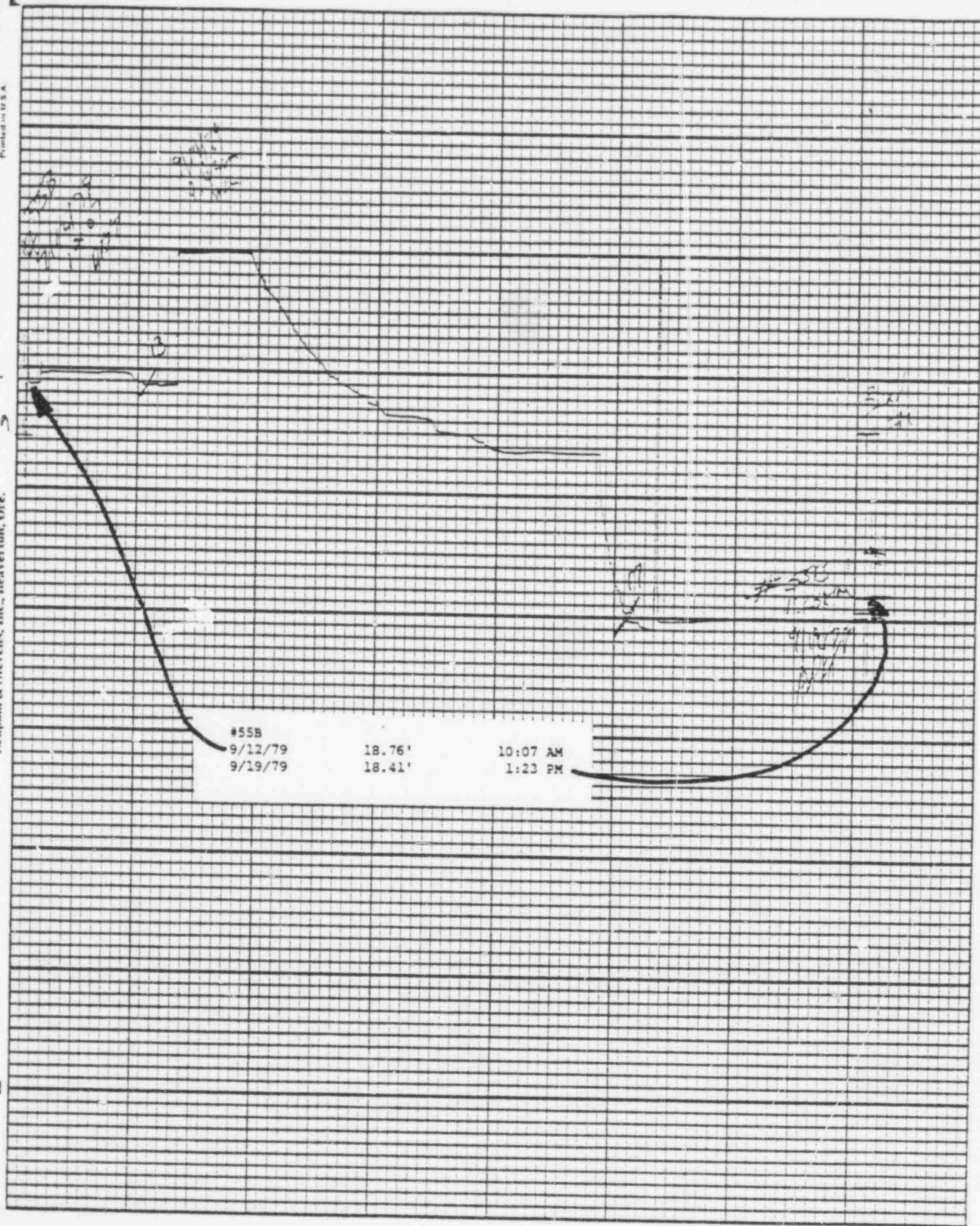
#54C		
9/12/79	26.36'	9:23 AM
9/20/79	25.94'	9:32 AM

EIGHT DAY CHART

Elevation of 26.36' for 9/12/79 should read 26.32' due to error in data reduction in previous week.

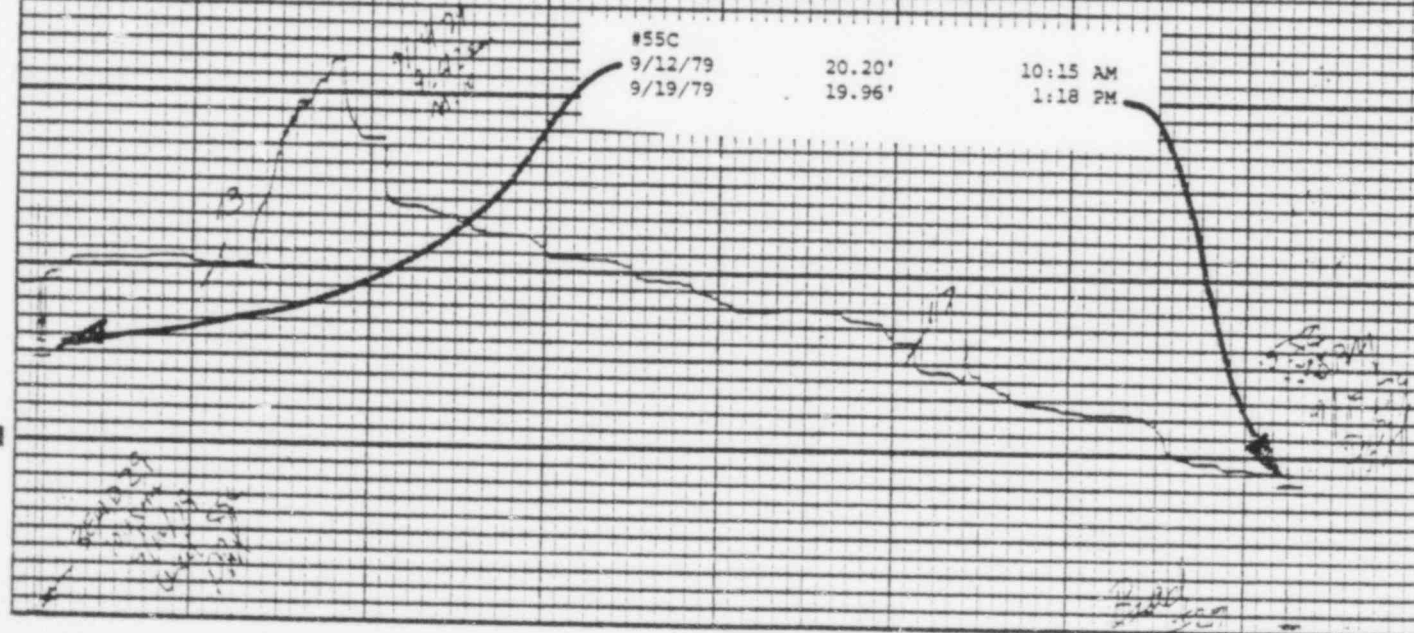
POOR ORIGINAL

1076 162



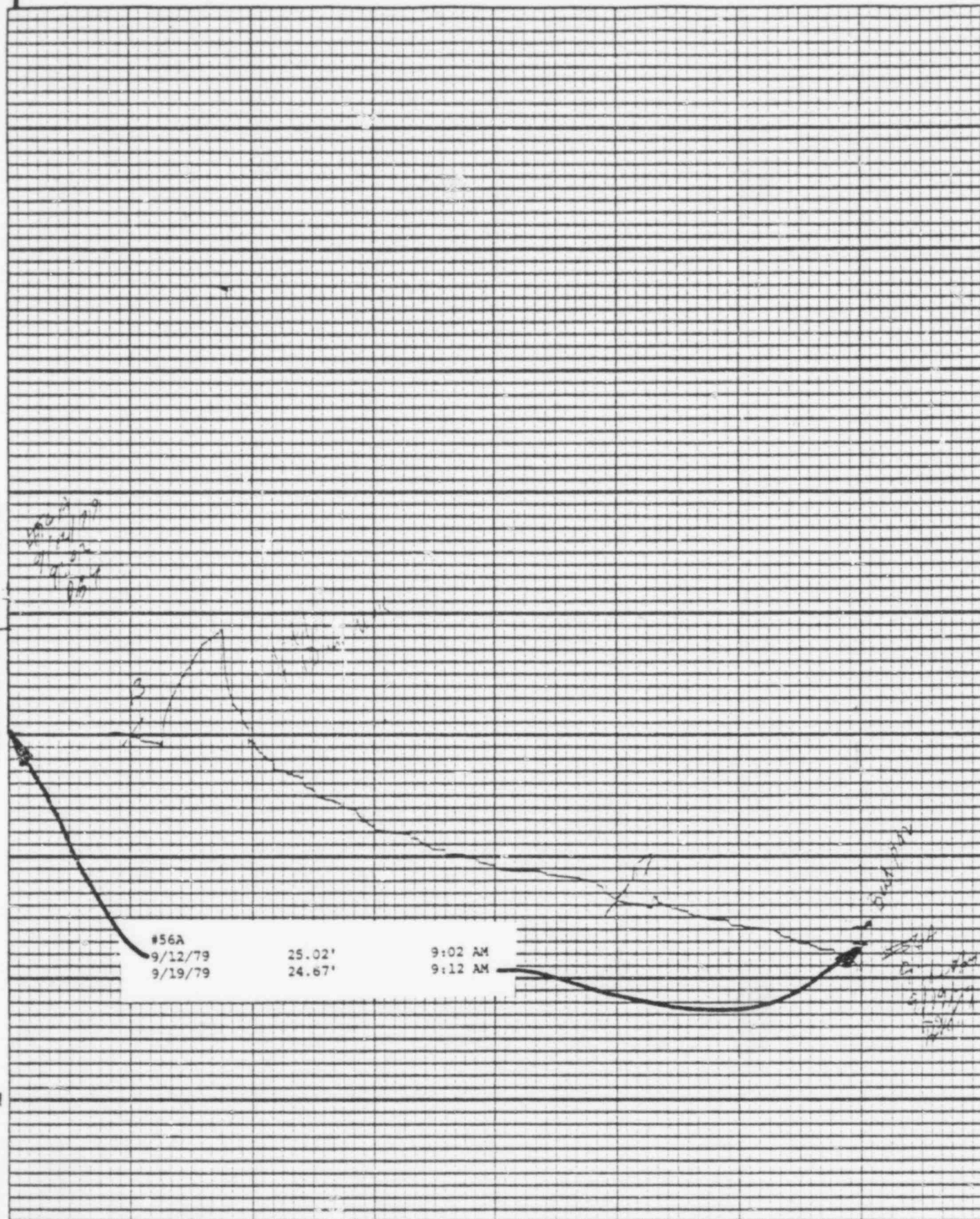
POOR ORIGINAL.

1076 163



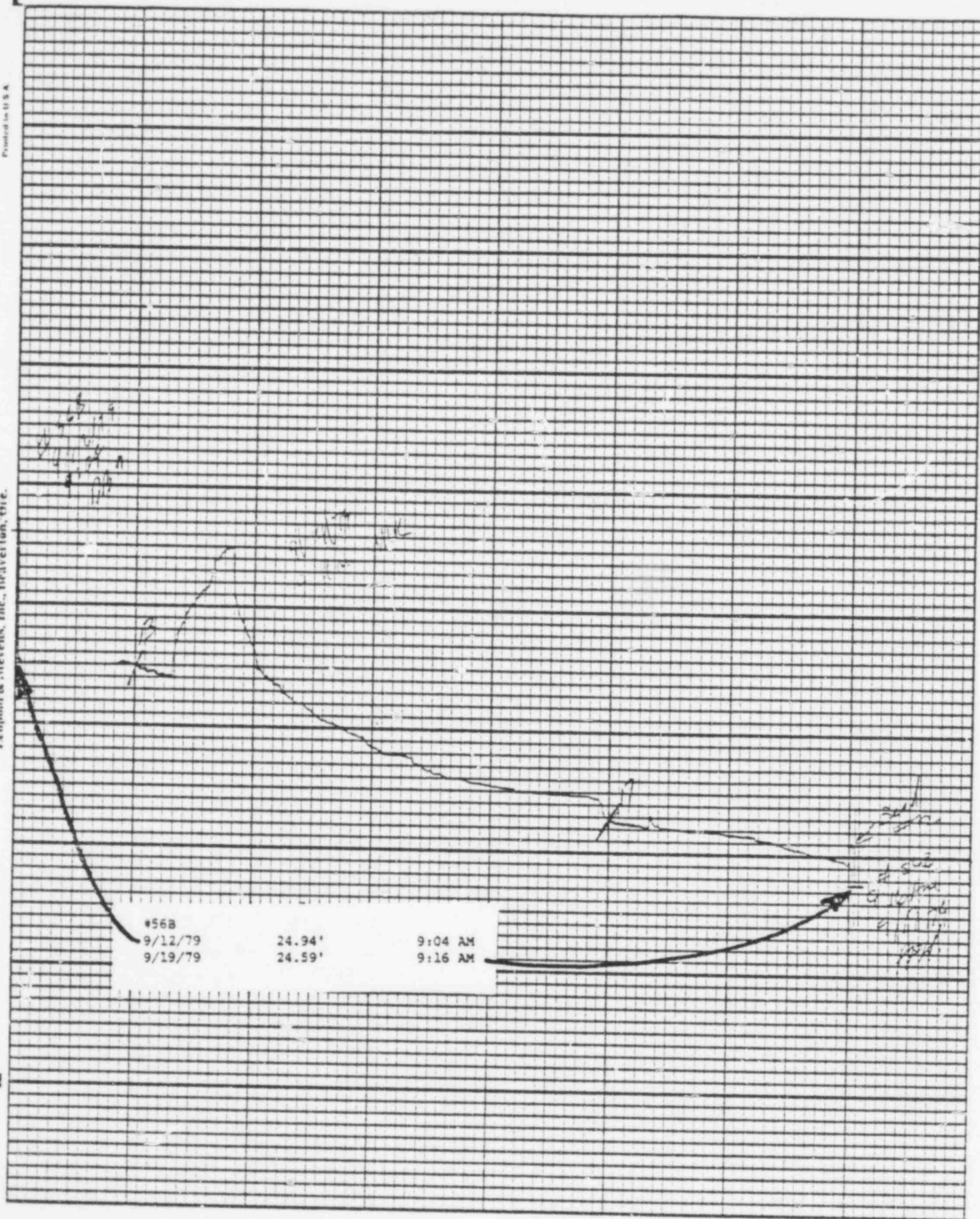
POOR ORIGINAL

1076 164



POOR ORIGINAL

1970 165



POOR ORIGINAL

1076 166 -

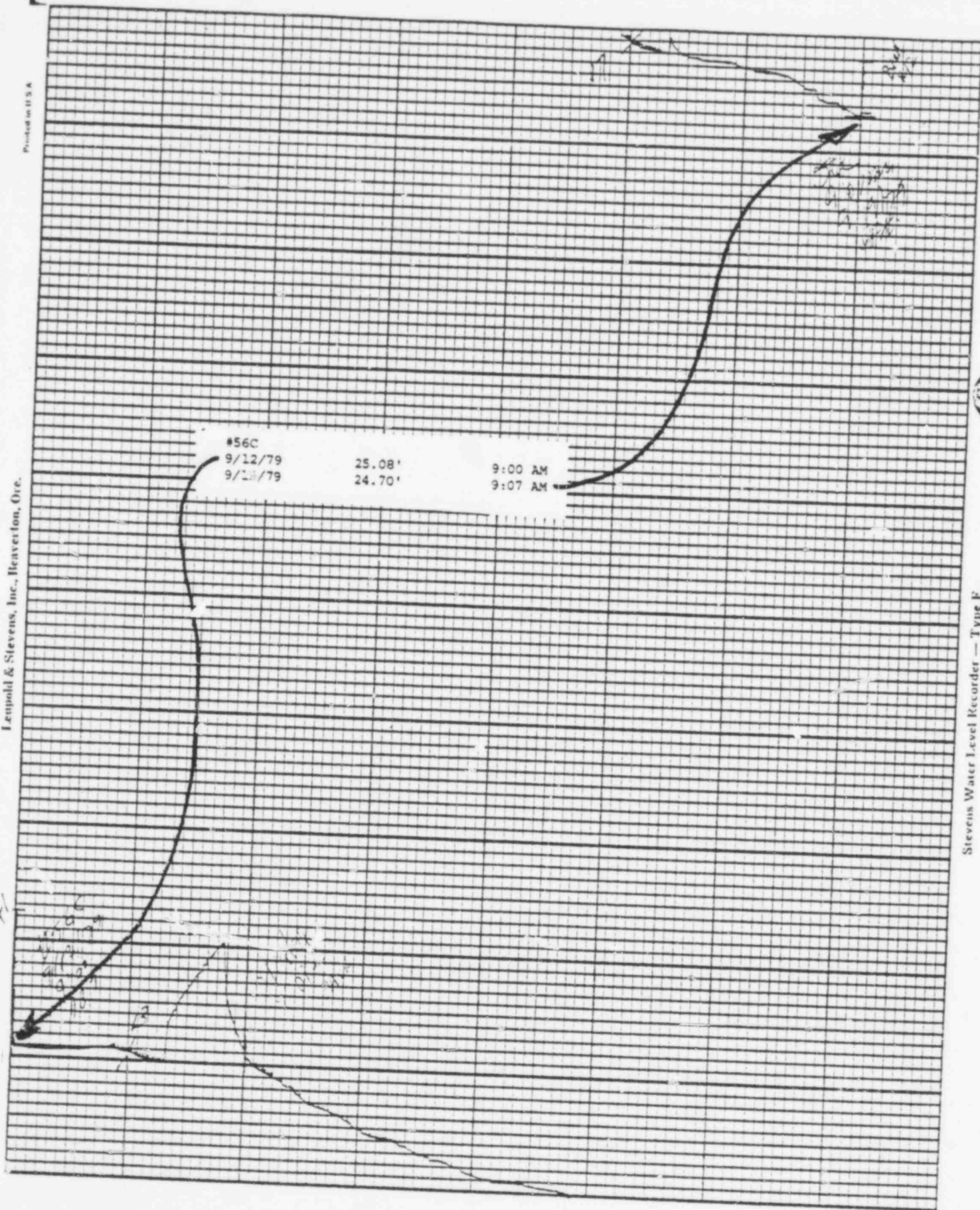
Leupold & Stevens, Inc., Beaverton, Ore.

Printed in U.S.A.

Chart F-1

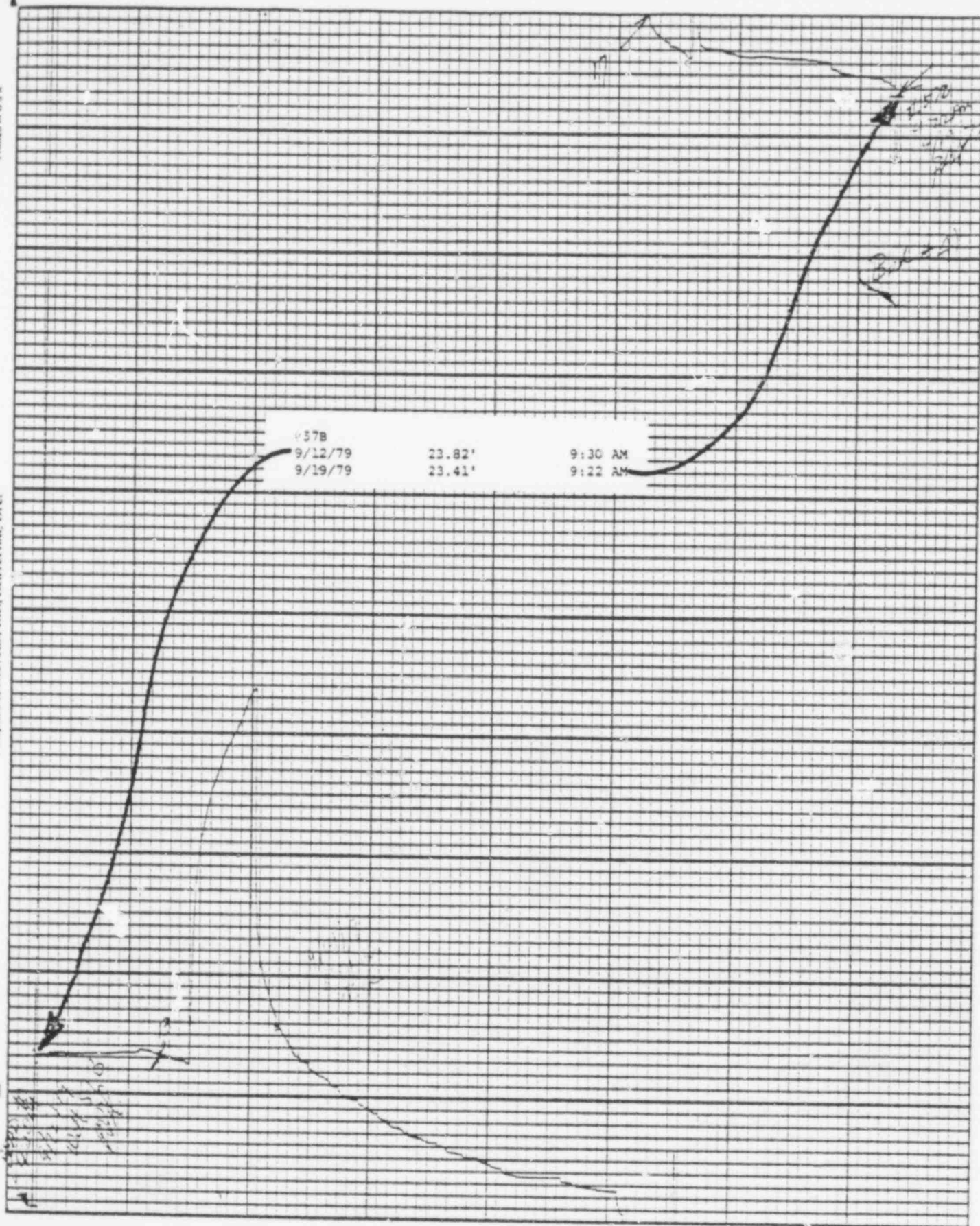
Stevens Water Level Recorder — Type F

ENCLOSURE



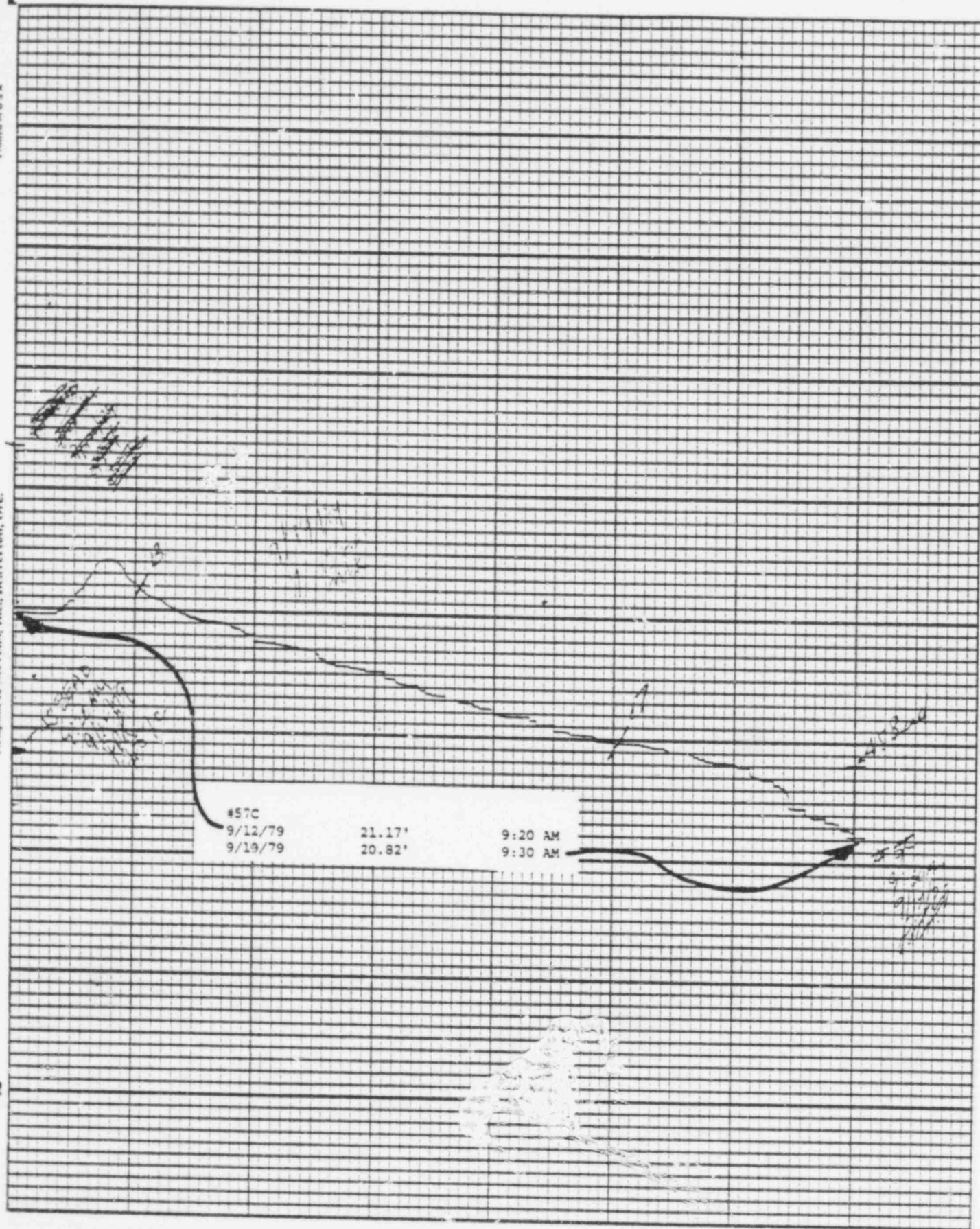
POOR ORIGINAL

1076 167



POOR ORIGINAL

1076 168

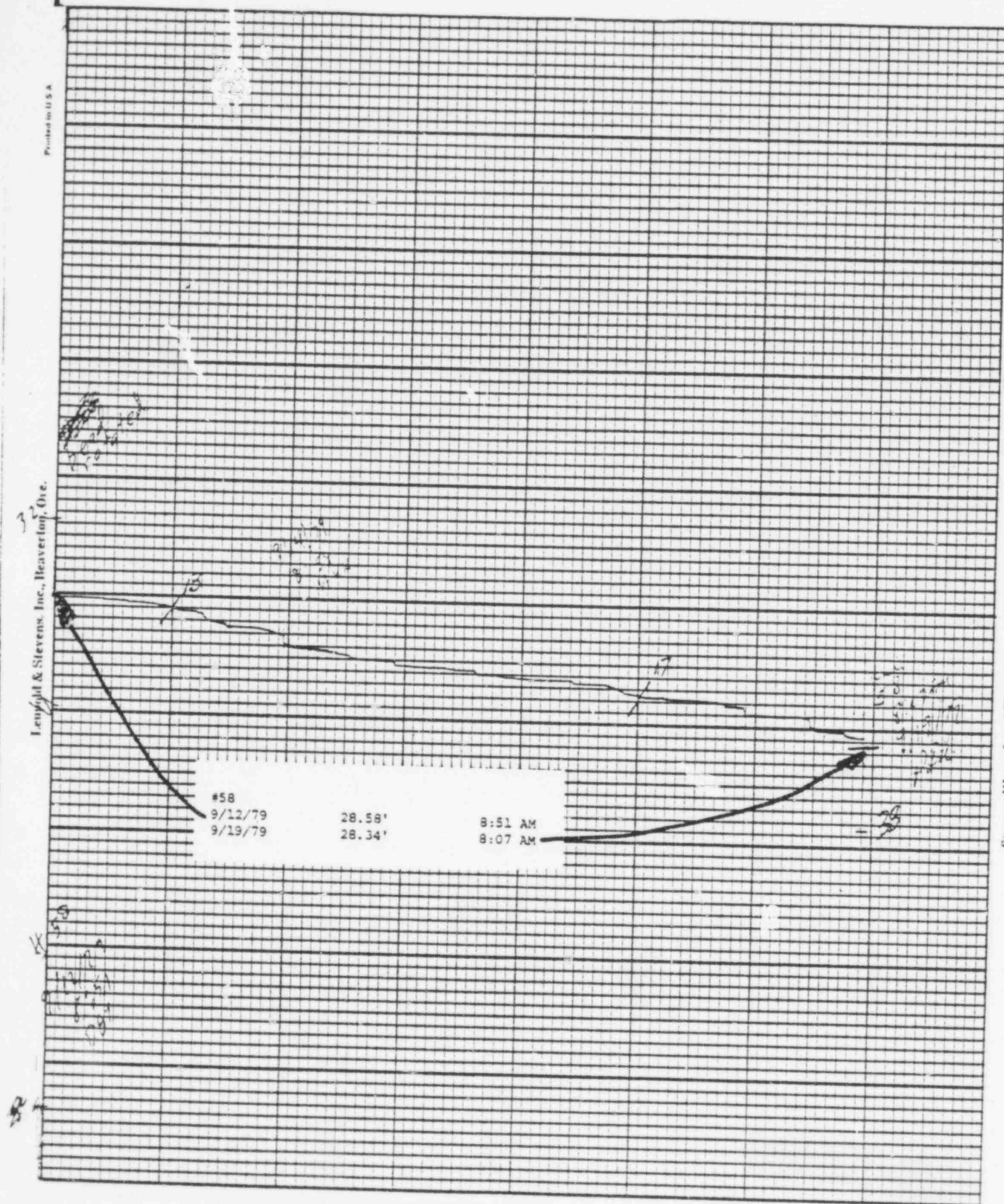


POOR ORIGINAL

1076 169

Leighton & Stevens, Inc., Denver, Colo.

Stevens Water Level Recorder — Type F



POOR ORIGINAL

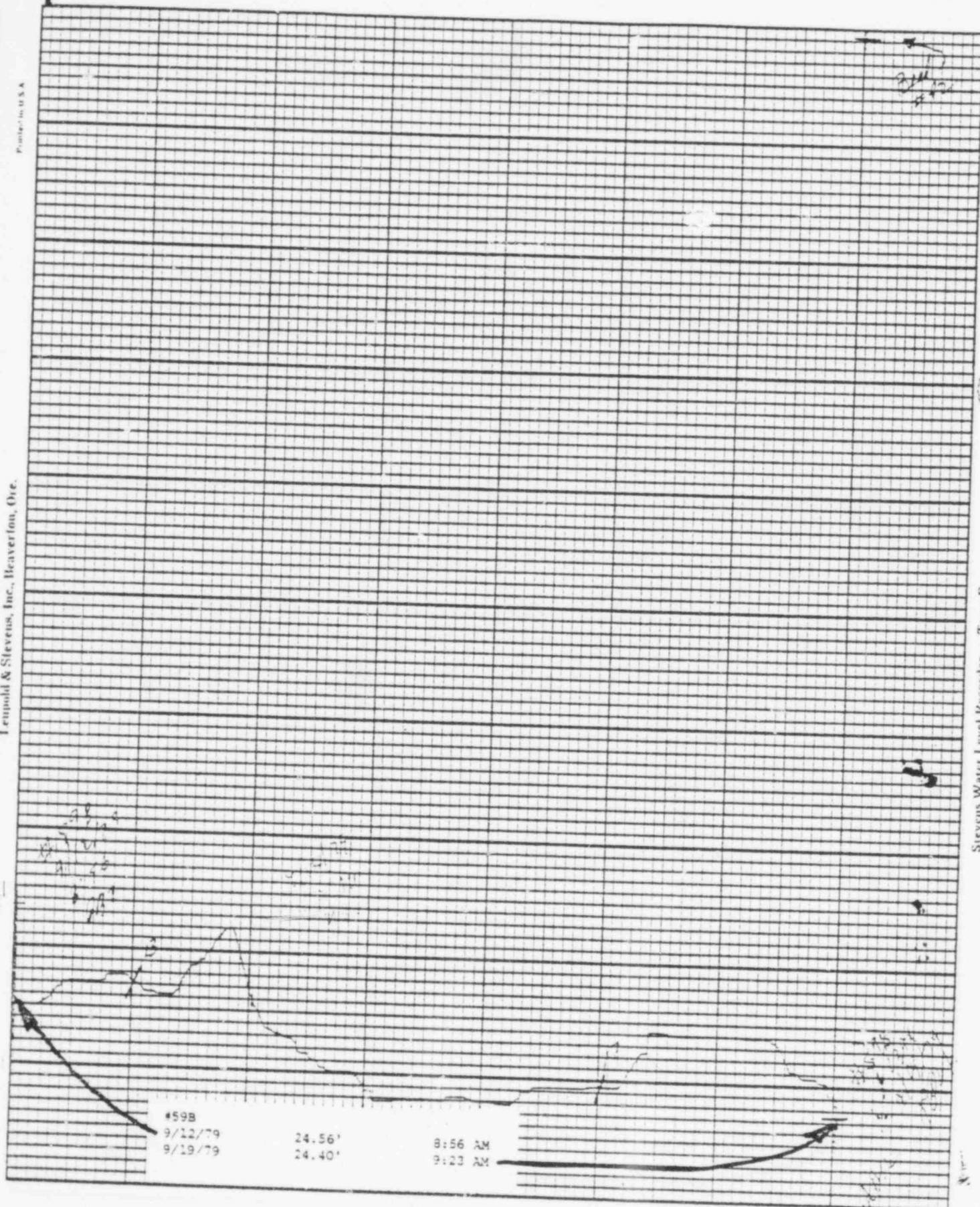
1076 170

Leupold & Stevens, Inc., Beaverton, Ore.

Printed in U.S.A.

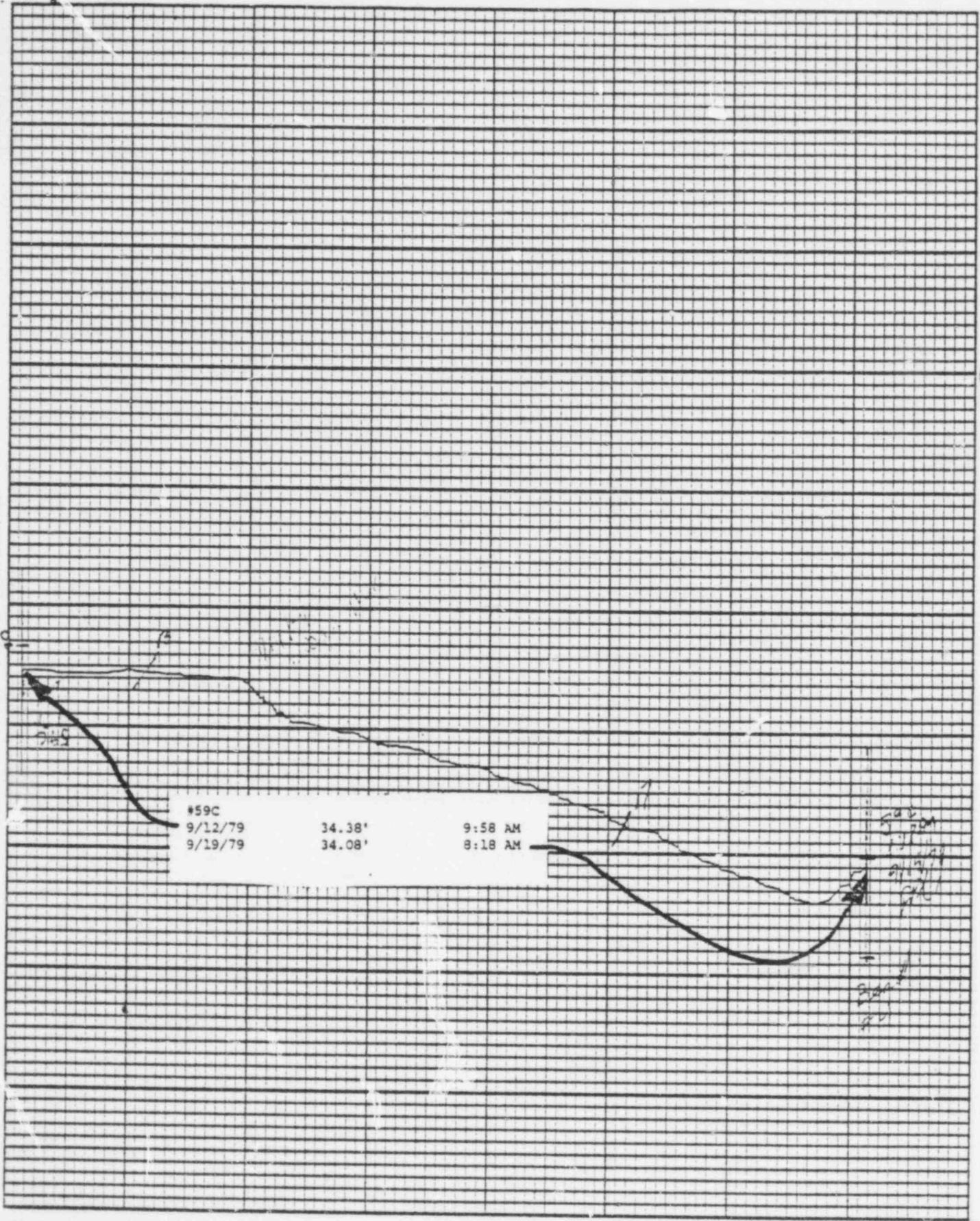
Chart F-1

Stevens Water Level Recorder -- Type F



POOR ORIGINAL

1076 171



POOR ORIGINAL

1376 172

POND LEVELS

<u>POND</u>	<u>9/19/79</u>
1	28.65
2	30.40
3	28.67
4	23.66
5	23.15
6	33.27
7	DRY
8	DRY
9	28.54
10	40.62
11	39.25
12	26.63
13	37.39

DBY:bd

1076 173

BAILLY WELLS WITHOUT RECORDERS

9/19/79

<u>WELL #</u>	<u>WATER ELEVATION IN FEET</u>
62	32.08
65	27.33
67	23.02
72	10.85
73	11.44
74	14.58

DBY:bd

1076 174

PNEUMATIC PRESSURE TRANSDUCERS

9/19/79

<u>TRANSDUCER</u>	<u>WATER ELEVATION IN FEET</u>
P-1	9.6
P-2	9.0
P-3	6.4
P-4	13.9
P-5	14.2
P-6	14.4

DBY:bd

1076 175

WATER METER READINGS

<u>DATE</u>	<u>TIME</u>	METER READING (GALLONS)	<u>INSTANTANEOUS FLOW RATE</u> (GPM)
-------------	-------------	-------------------------------	---

Sump Pump Discharge

9/19/79	1:44 P.M.	299,419,750	224
---------	-----------	-------------	-----

Well Point Discharge

9/19/79	9,025,589	281,589 Gallons Discharged 6:00 A.M. 6:00 P.M. September 17, 1979
---------	-----------	---

MVK:lu

1076 176