



Northern Indiana Public Service Company

Nuclear Staff
RR#3, Box 501
Chesterton, IN 46304
September 7, 1979

BAILLY GENERATING STATION N-1

Mr. Ronald Ballard
Environmental Projects Branch No. 1
Directorate of Licensing
U.S. Nuclear Regulatory Commission
Washington, D.C. 20545

RE: NORTHERN INDIANA PUBLIC SERVICE COMPANY
BAILLY GENERATING STATION NUCLEAR 1
DOCKET 50-367

Dear Mr. Ballard:

Enclosed herewith are ten (10) copies of the following:

1. Well Charts for 8/22/79 - 8/29/79
2. Bailly Wells Without Recorders for 8/29/79
3. Pond Levels for 8/29/79
4. Pneumatic Pressure Transducers for 8/29/79
5. Water Meter Readings for 8/29/79

Sincerely,

R. J. Bohn
Manager, Nuclear Staff

DBY:js

Enclosures

File: Ground Water Observation Monitoring Wells

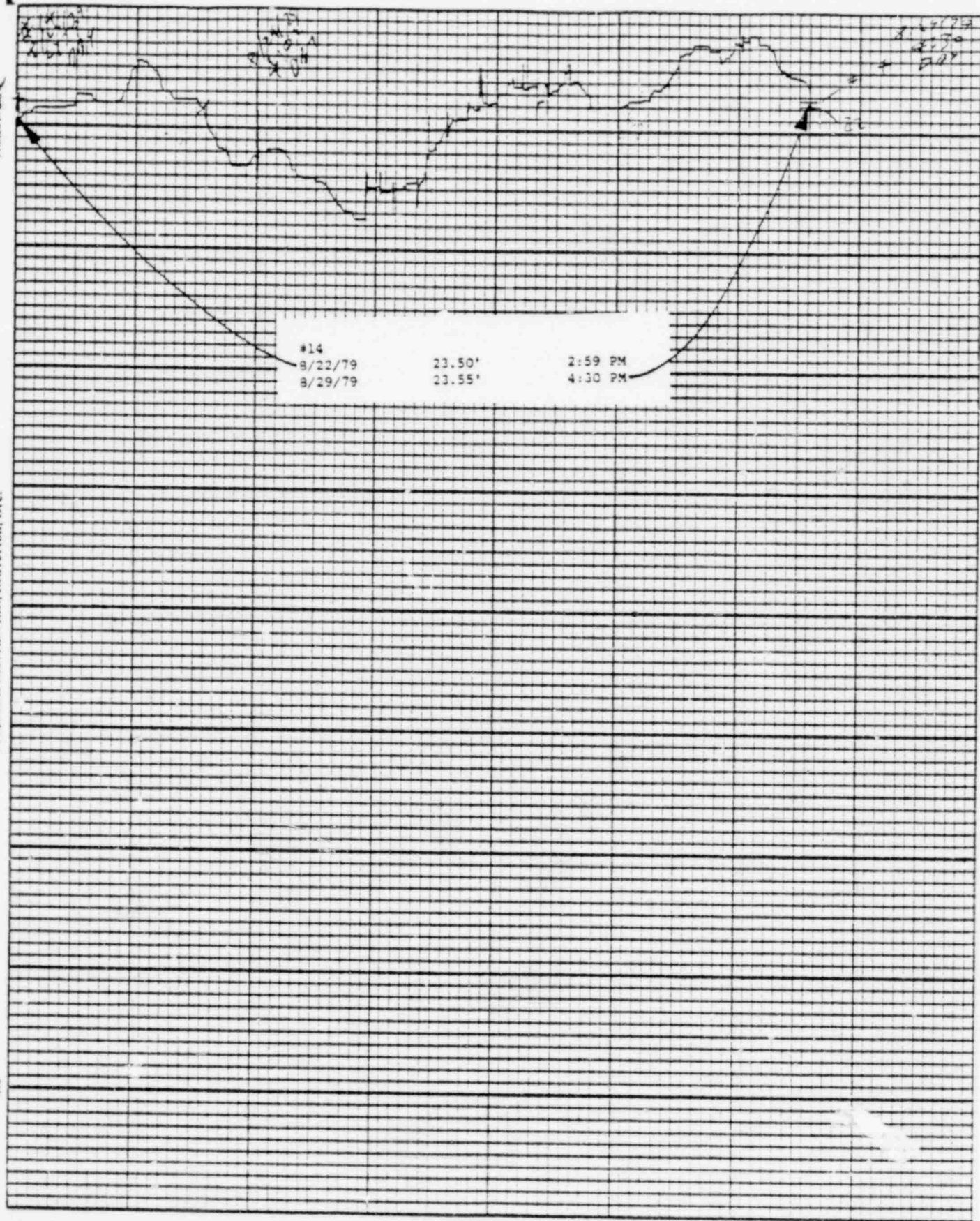
*Do not
Est*

7909250547

1019 056

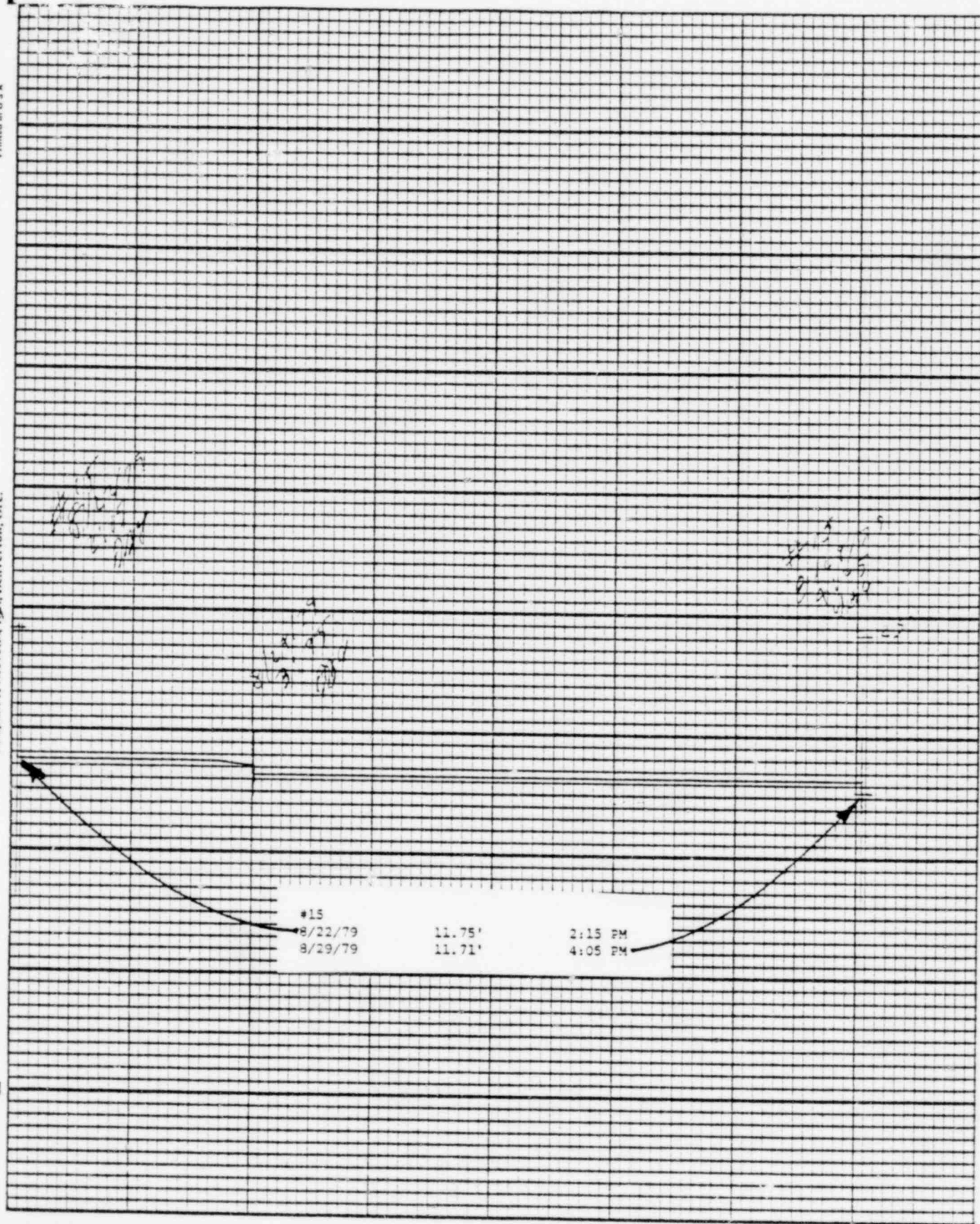
Leupold & Stevens Inc., Beaverton, Ore.

Printed in U.S.A.



POOR
ORIGINAL

1019 057

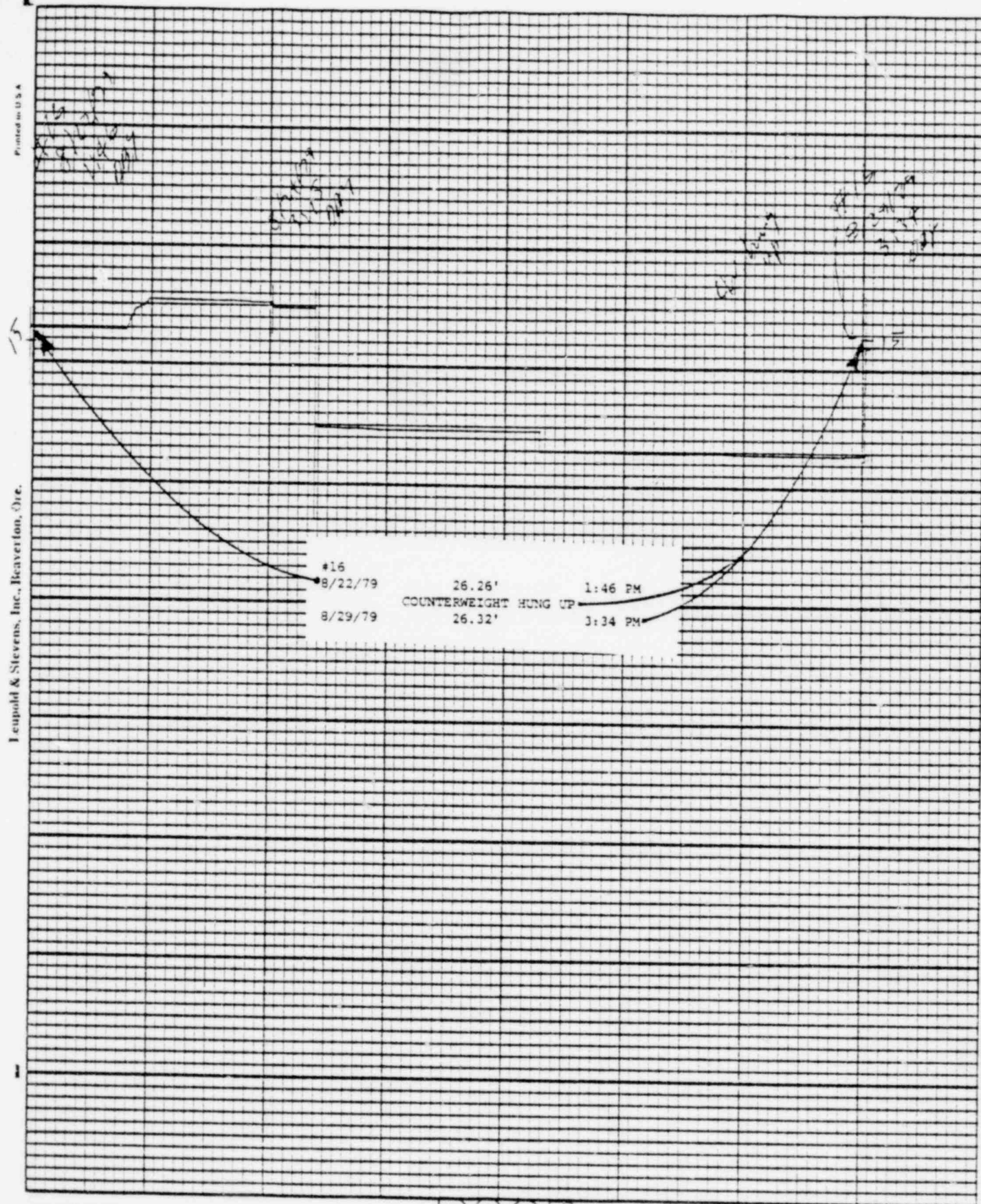


POOR
ORIGINAL

1019 058

Leupold & Stevens, Inc., Beaverton, Ore.

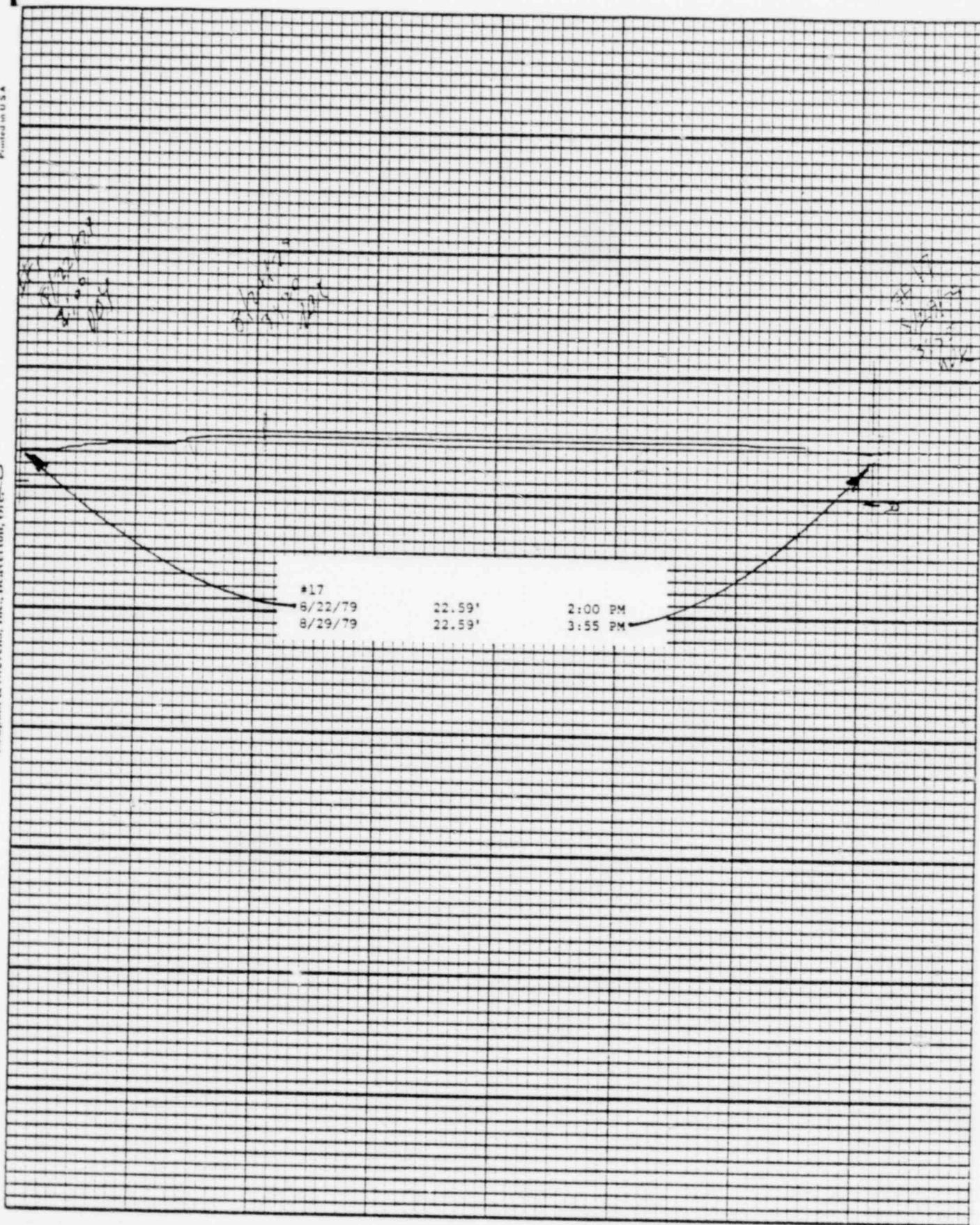
Chart 12-1



Stevens Water Level Recorder — Type F

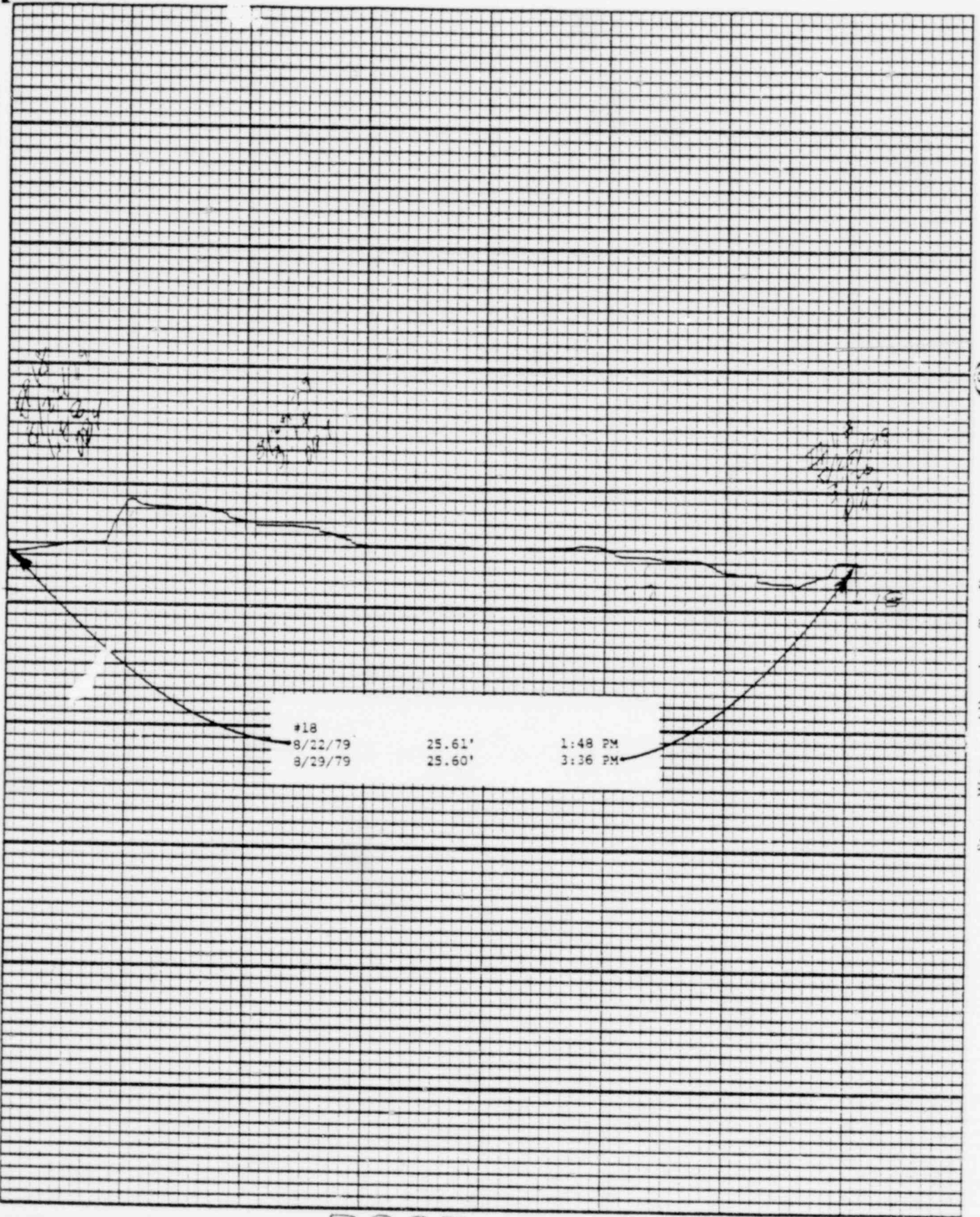
POOR
ORIGINAL

1019 059



POOR
ORIGINAL

1019 060



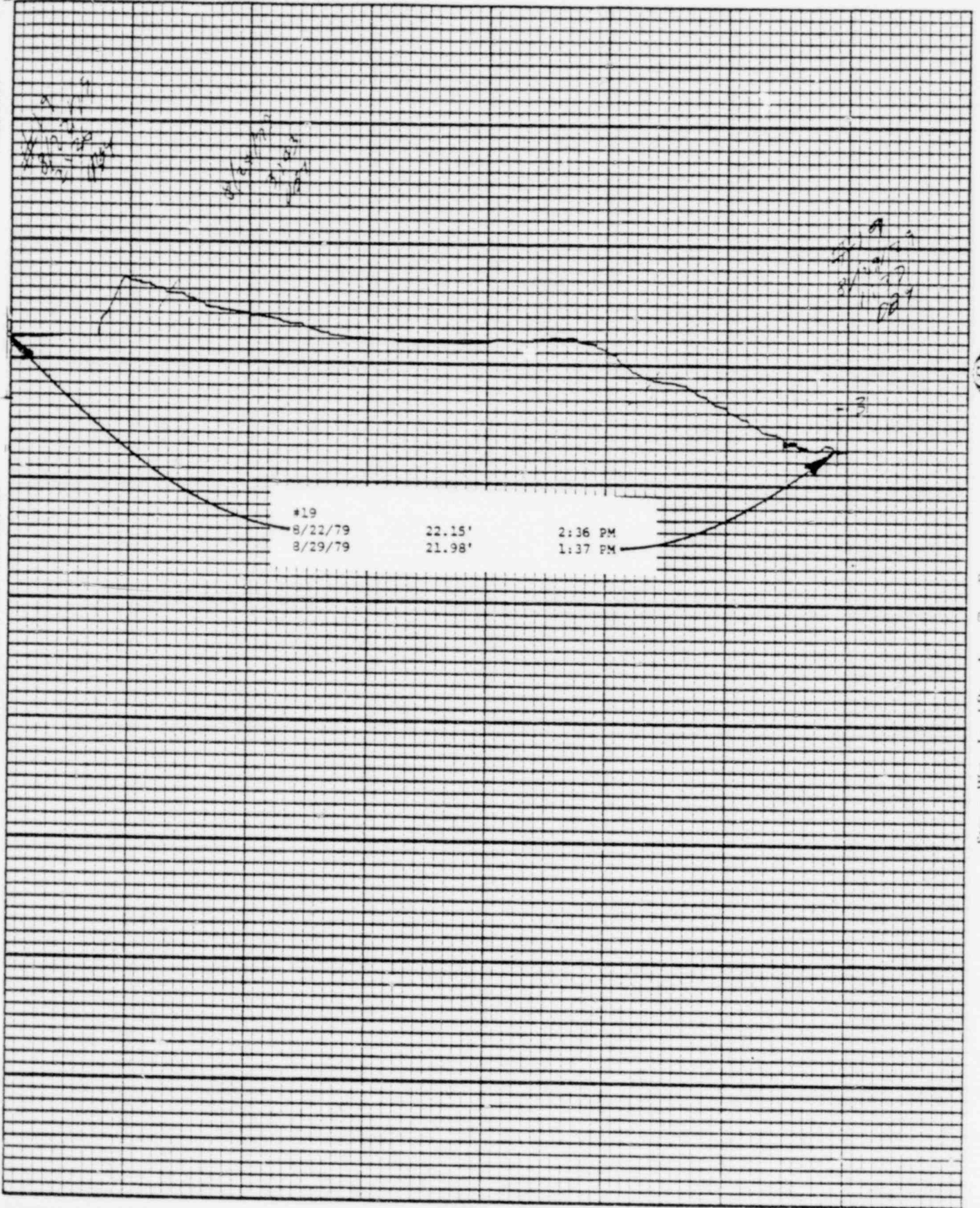
Printed on U.S.A.

Leopold & Stevens, Inc., Beaverton, Ore.

Chart F.1

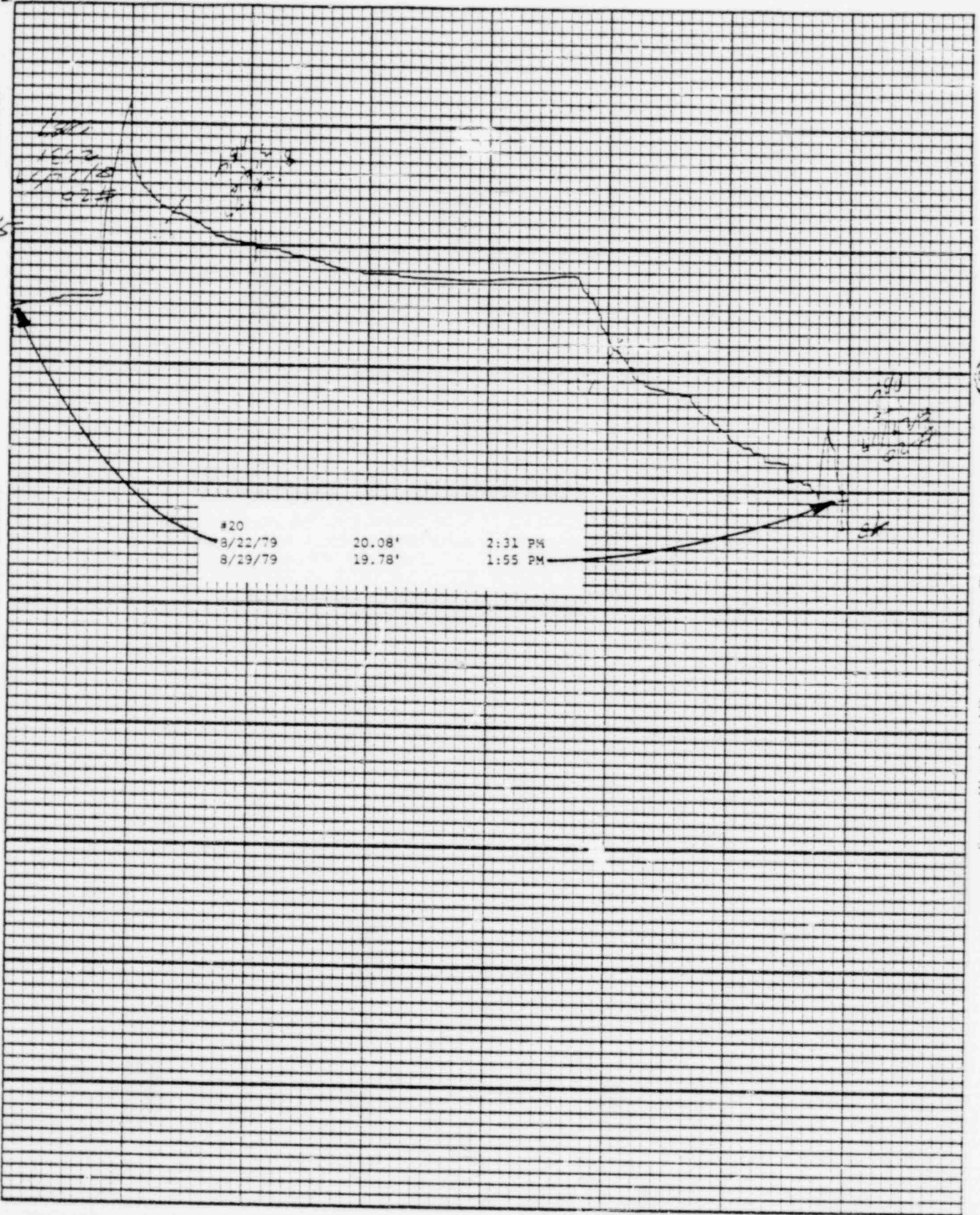
Stevens Water Level Recorder — Type F

(S)



POOR
ORIGINAL

1019 062

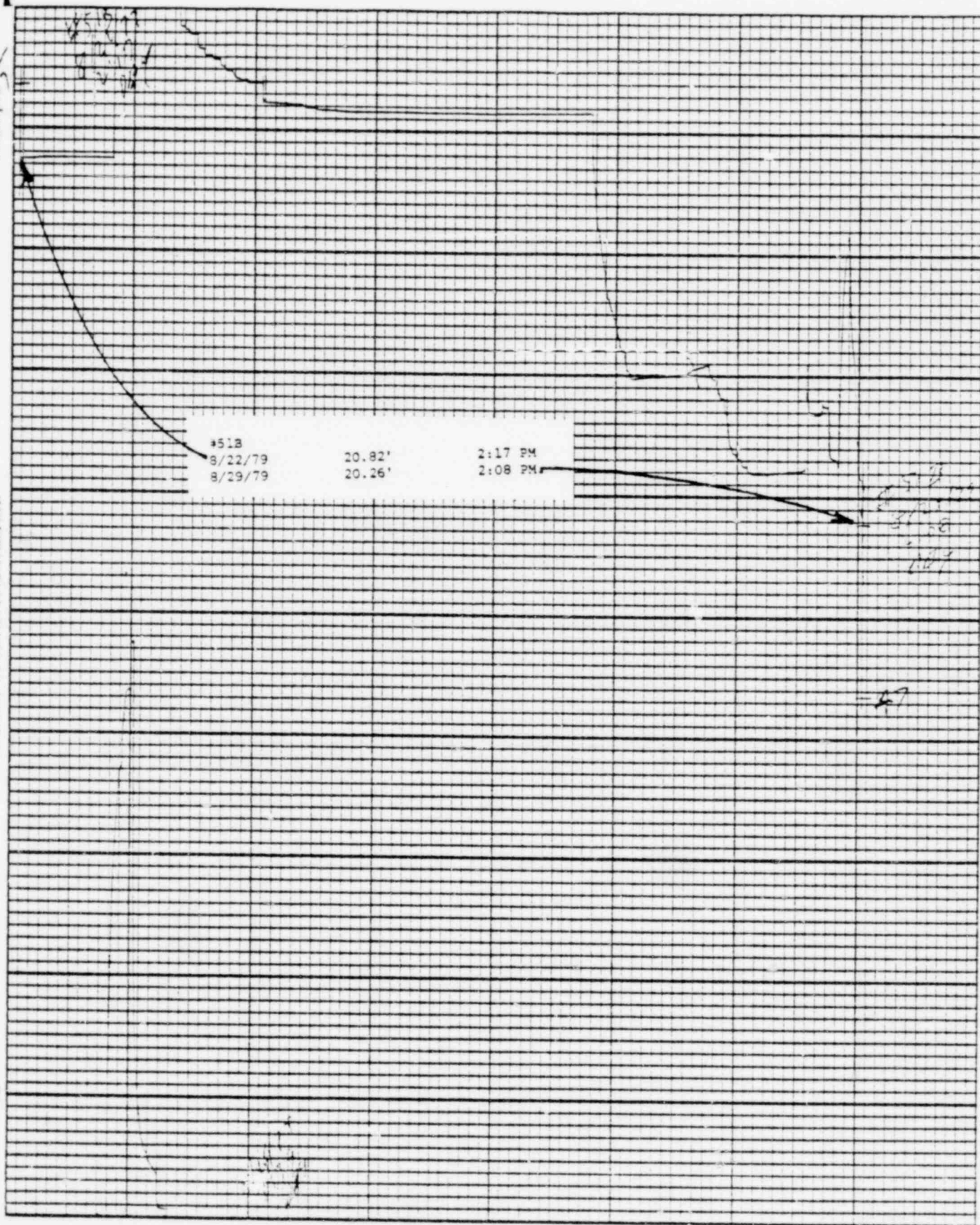


POOR
ORIGINAL

1019 063

Leupold & Stevens, Inc., Beaverton, Ore.

Printed on 11/85



Printed in U.S.A.

56

Leupold & Stevens, Inc., Beaverlton, Ore.

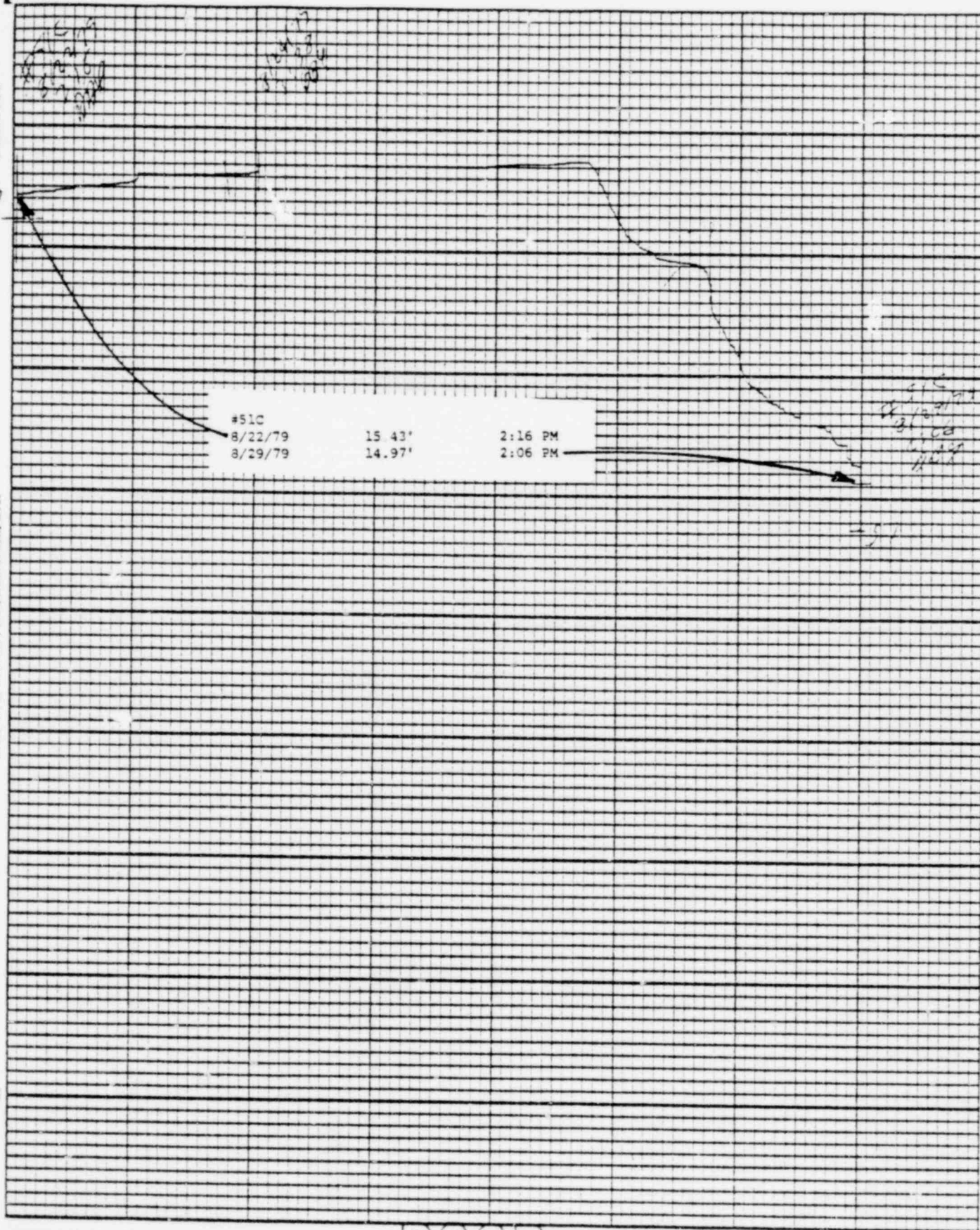


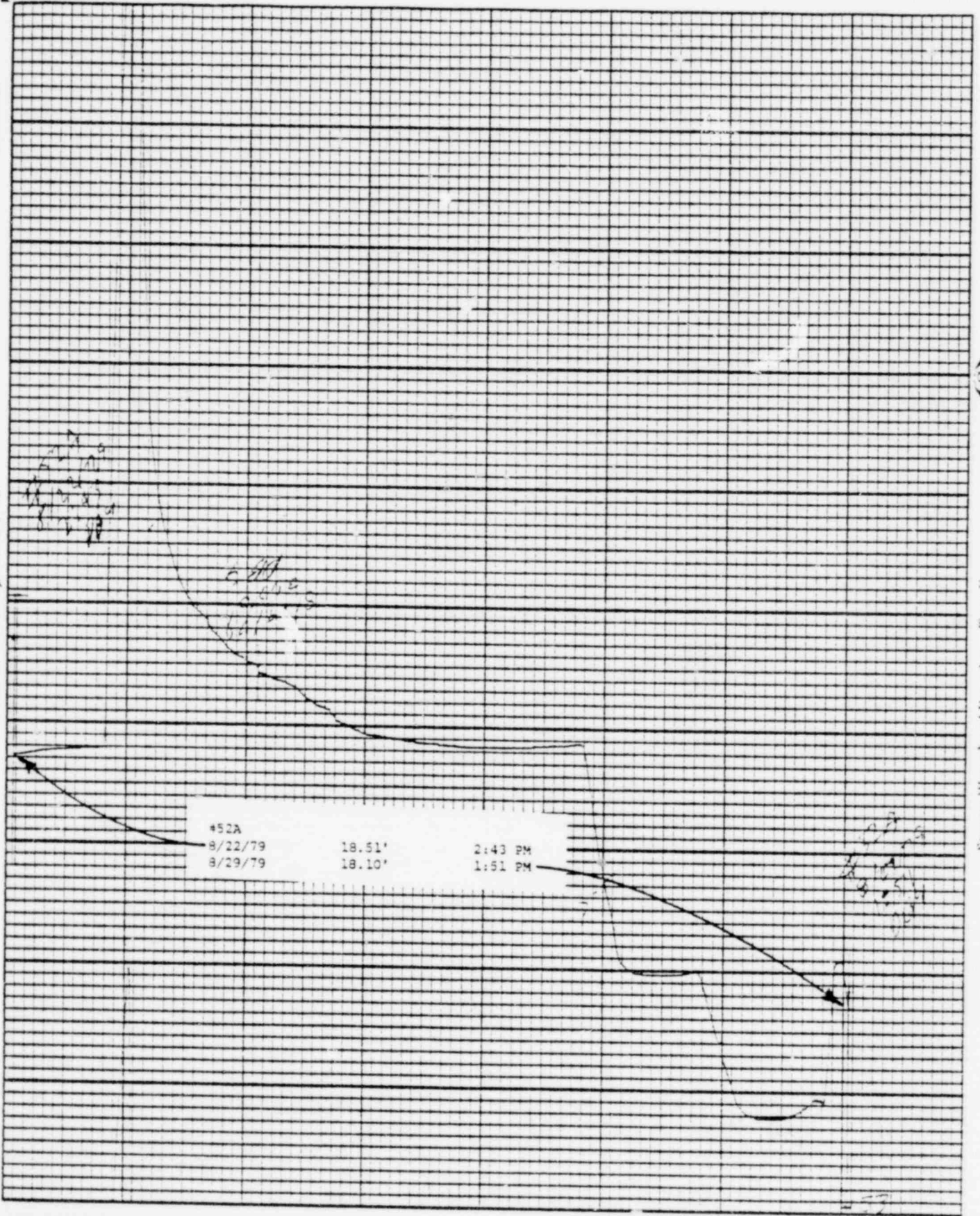
Chart F-1

(S)

Stevens Water Level Recorder — Type F

POOR
ORIGINAL

1019 065



POOR
ORIGINAL

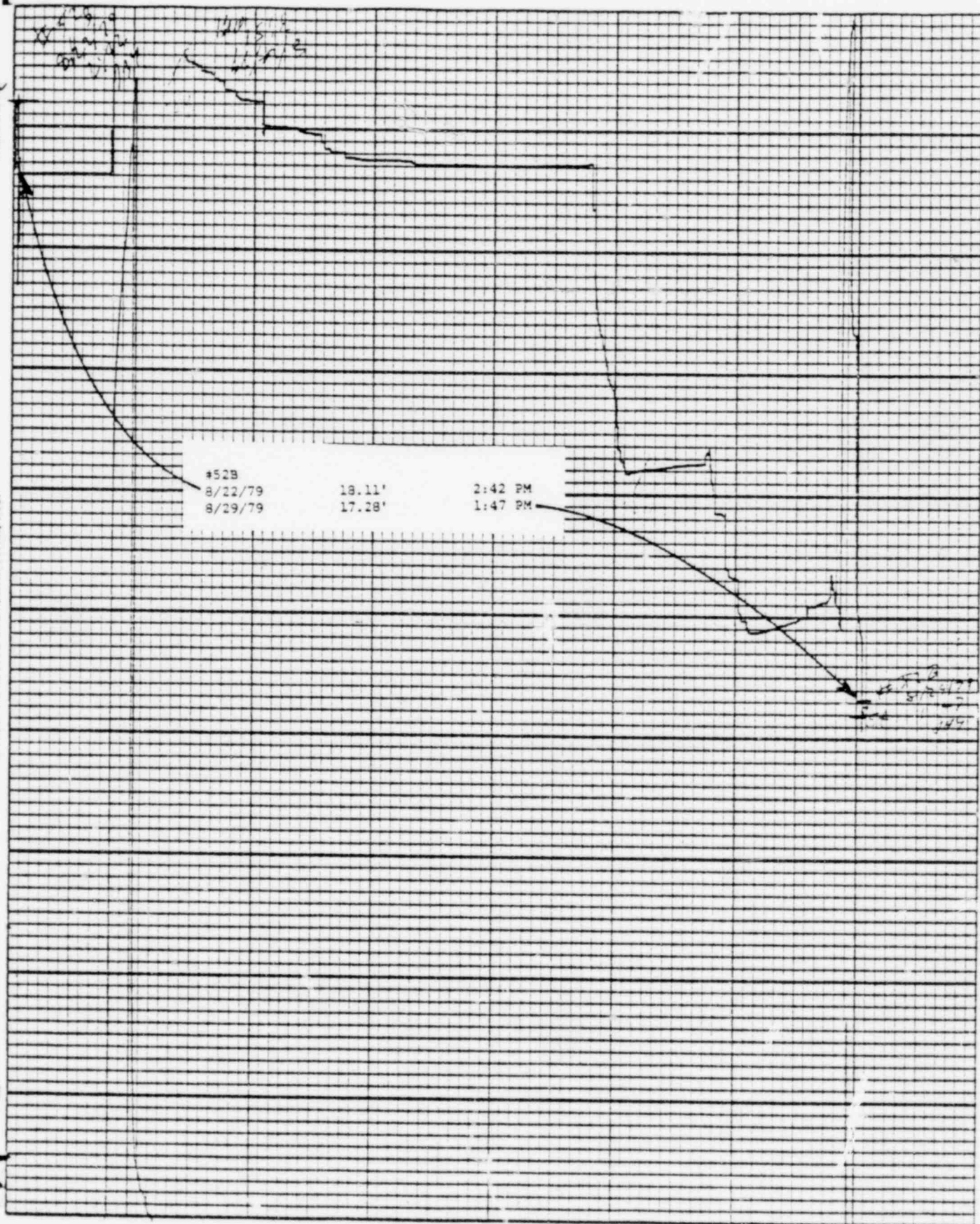
1019 066

Printed on USP

Stevens Water Level Recorder -- Type B

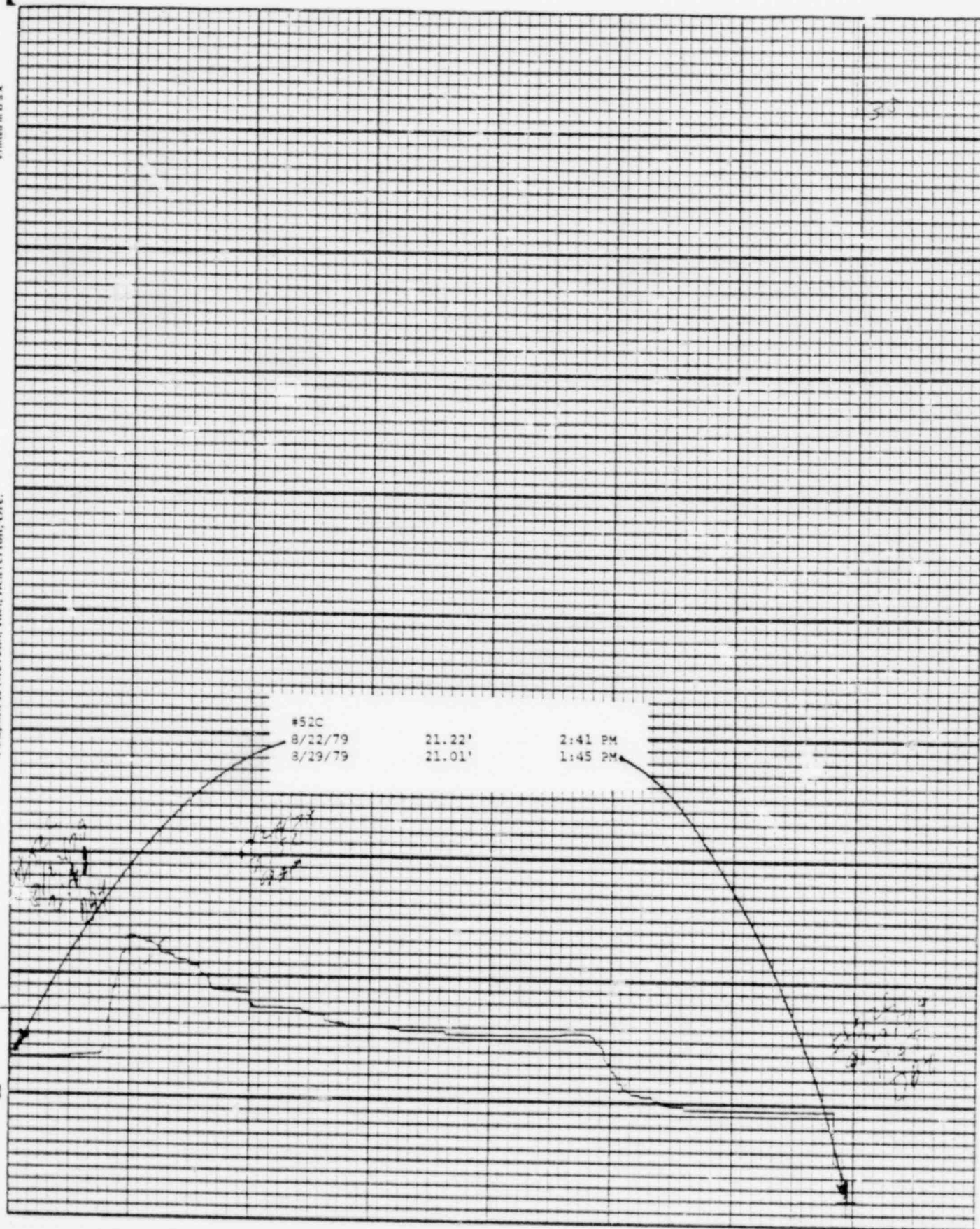


Chart P-1



POOR
ORIGINAL

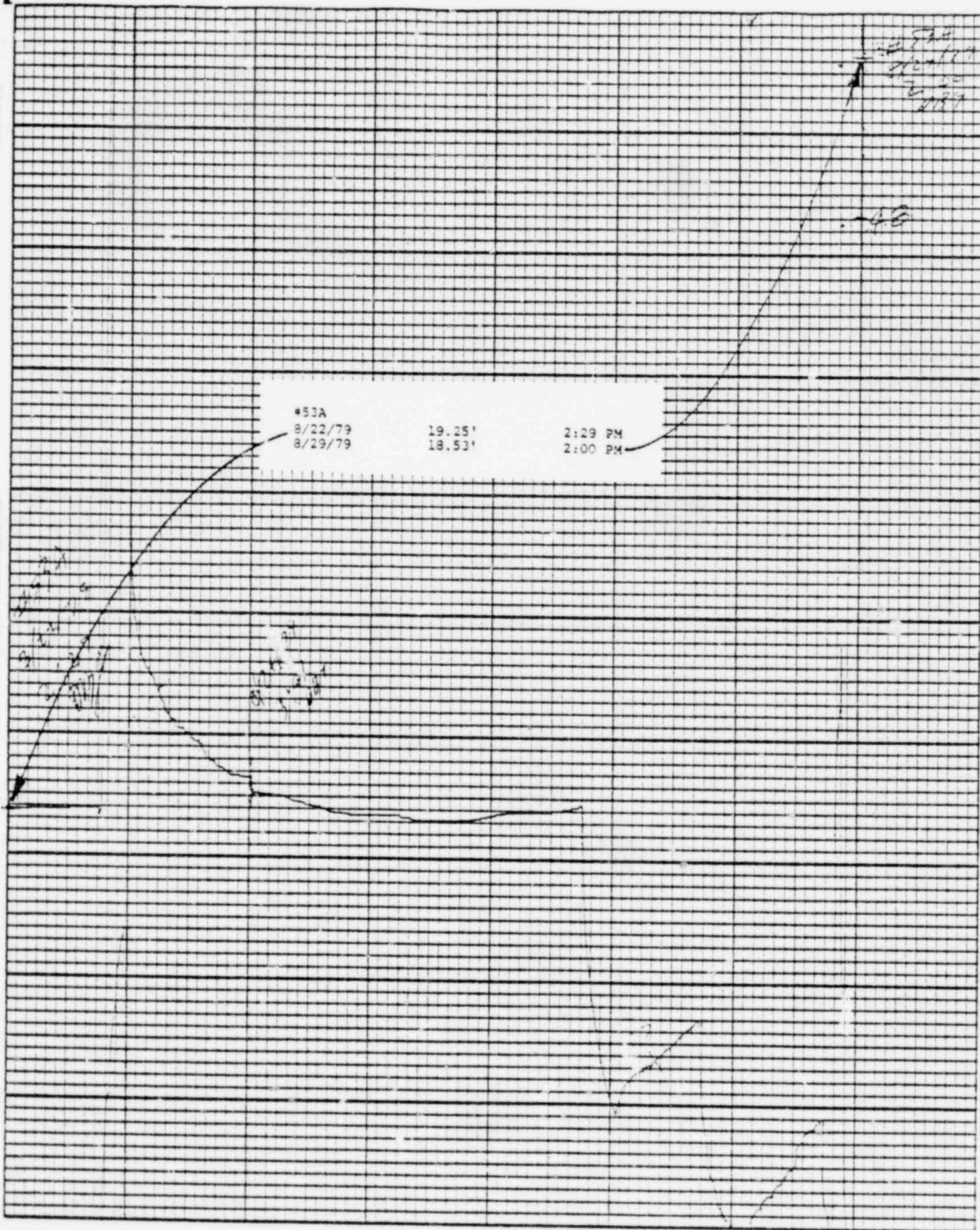
1019 067



POOR
ORIGINAL

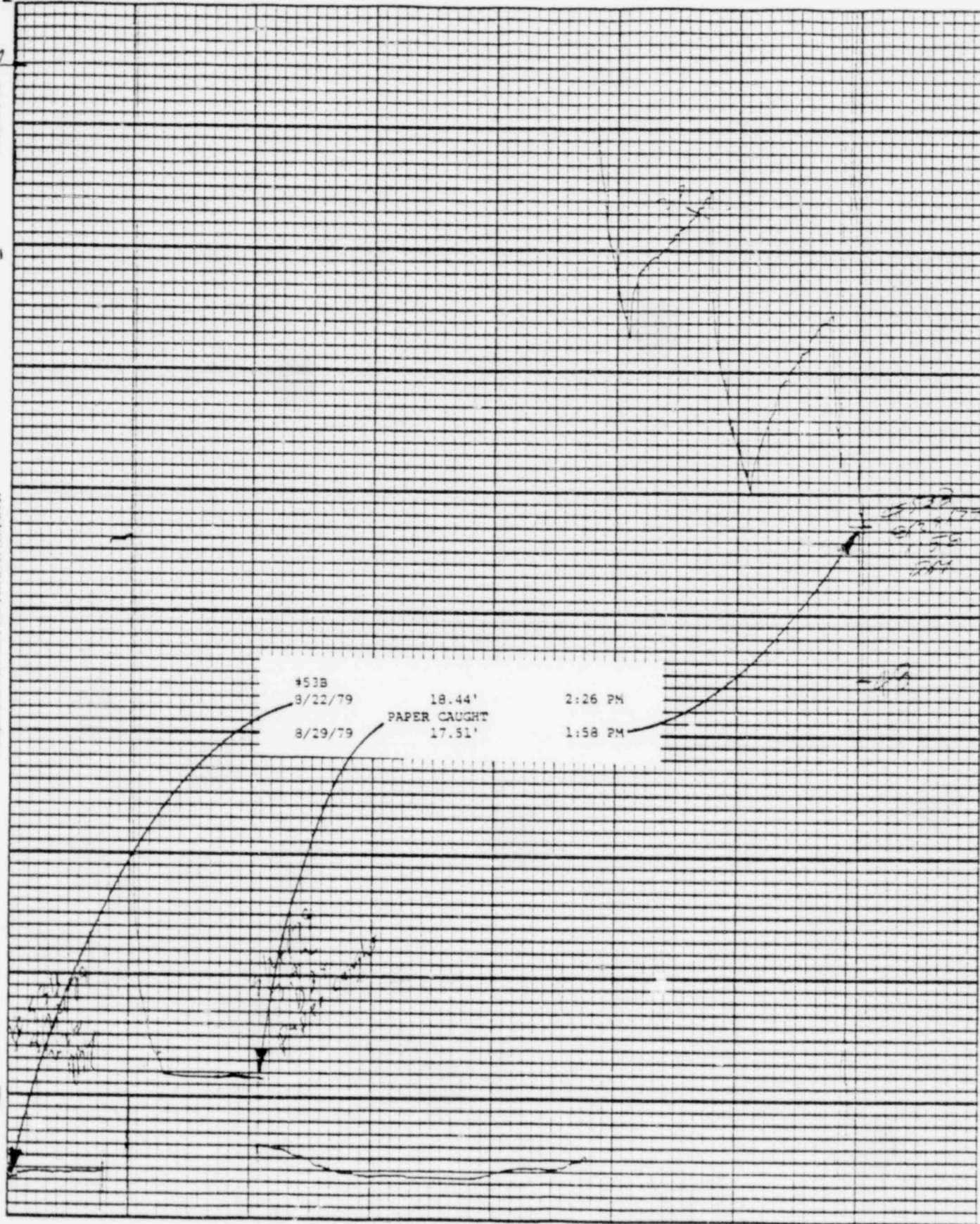
1019 068

X6



POOR
ORIGINAL

1019 069

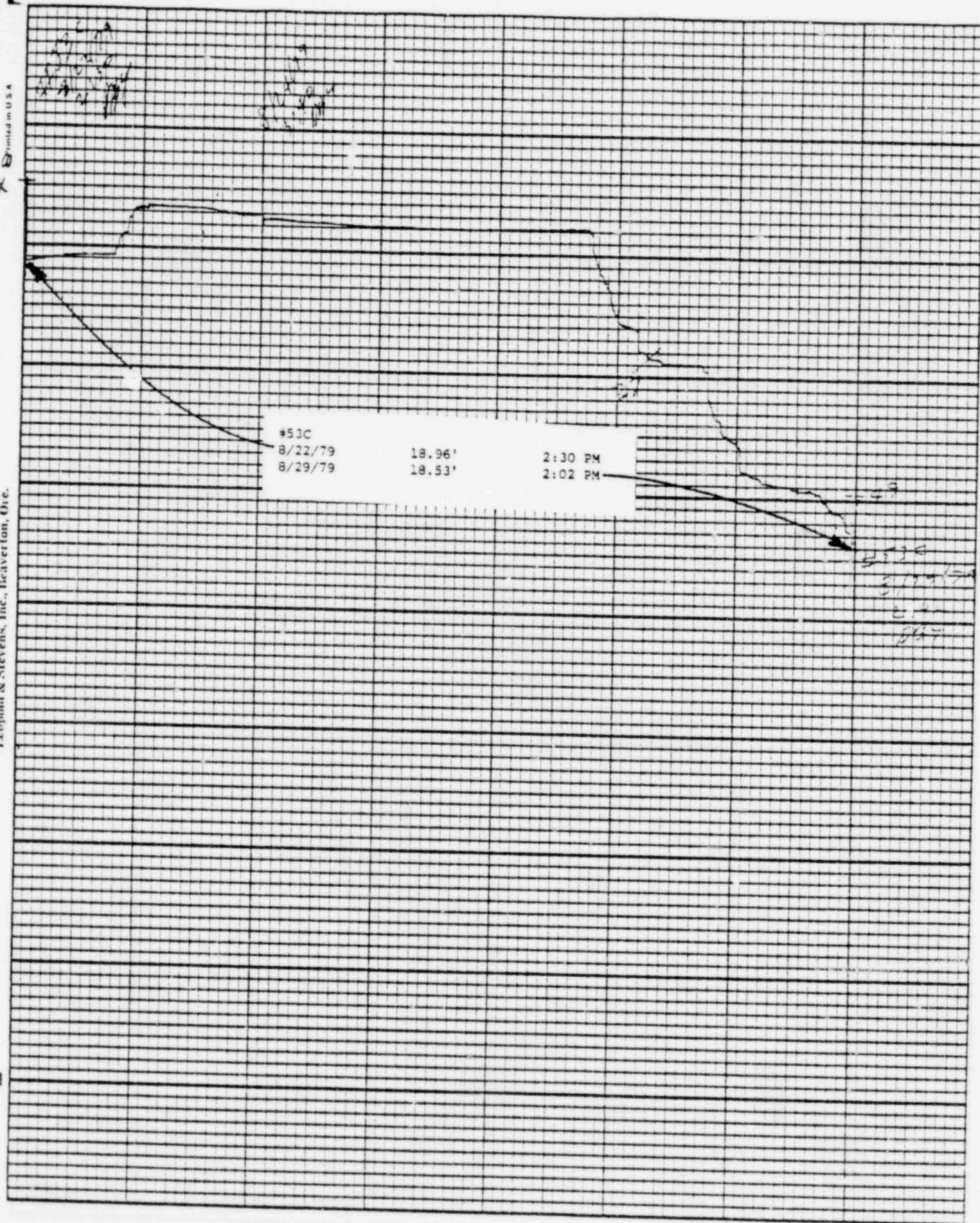


POOR
ORIGINAL

1019 070

Printed in U.S.A.

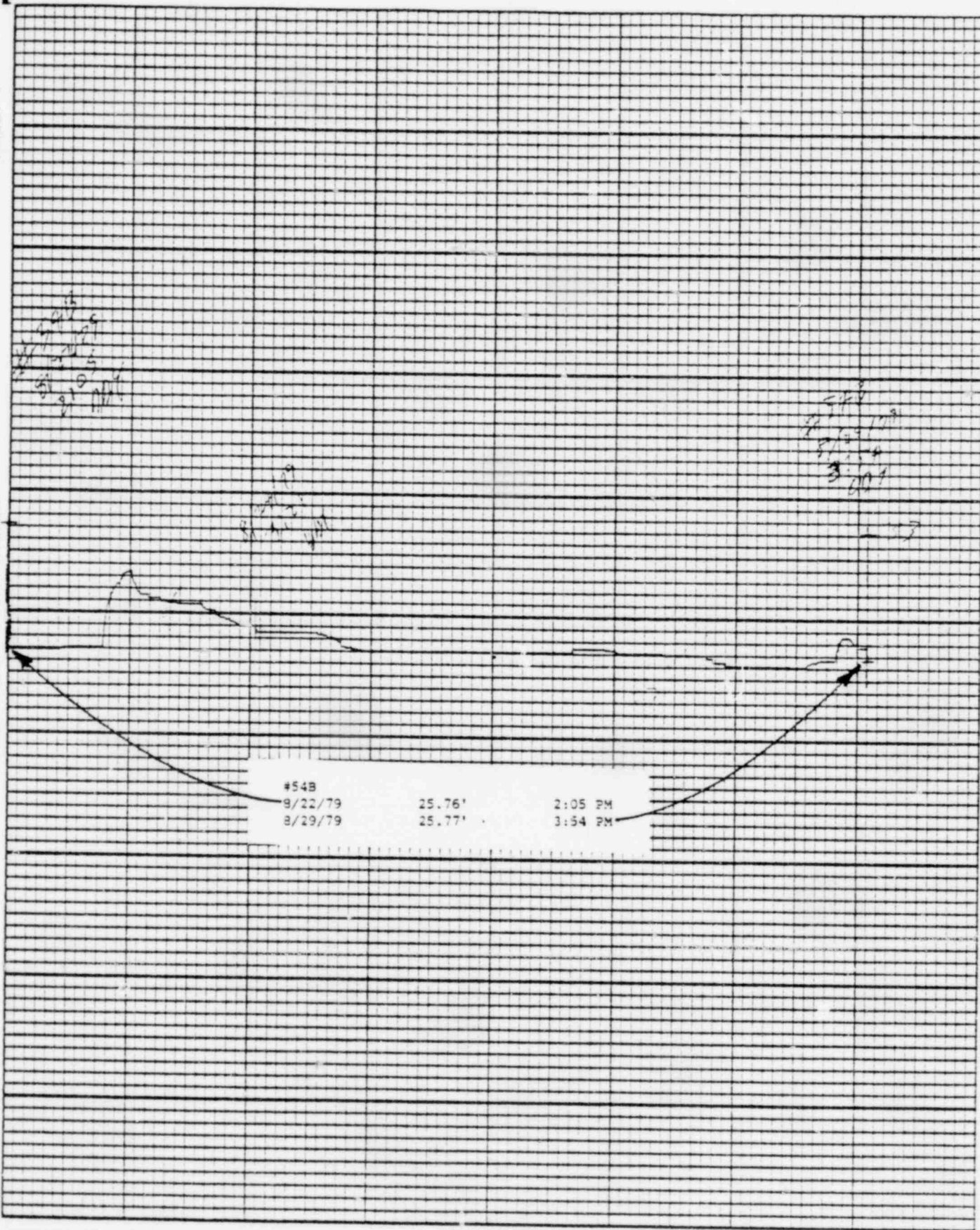
Leopold & Stevens, Inc., Beaverton, Ore.



POOR
ORIGINAL

1019 071

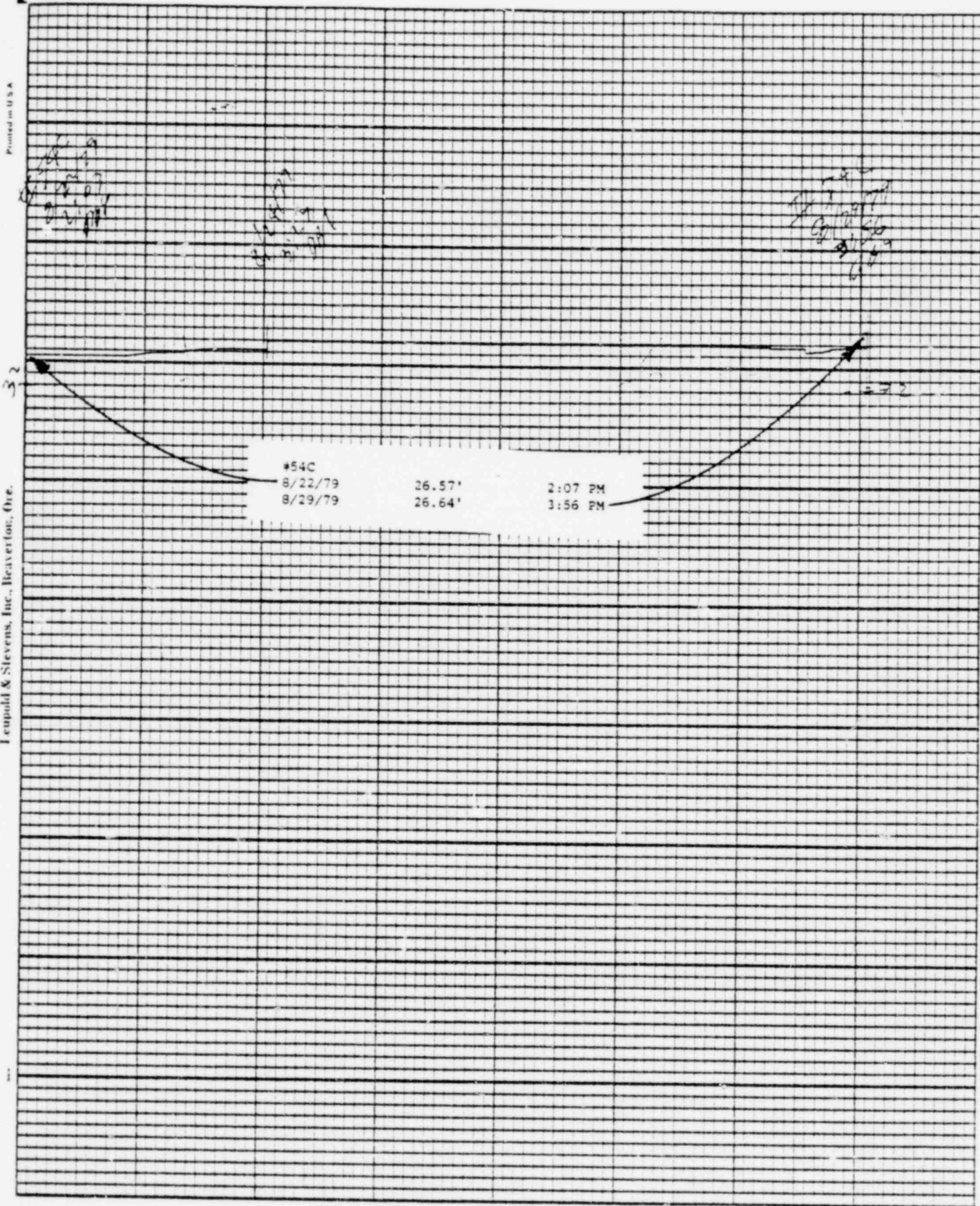
Leupold & Stevens, Inc., Beaverford, Wis.



Stevens Water Level Recorder — Type F

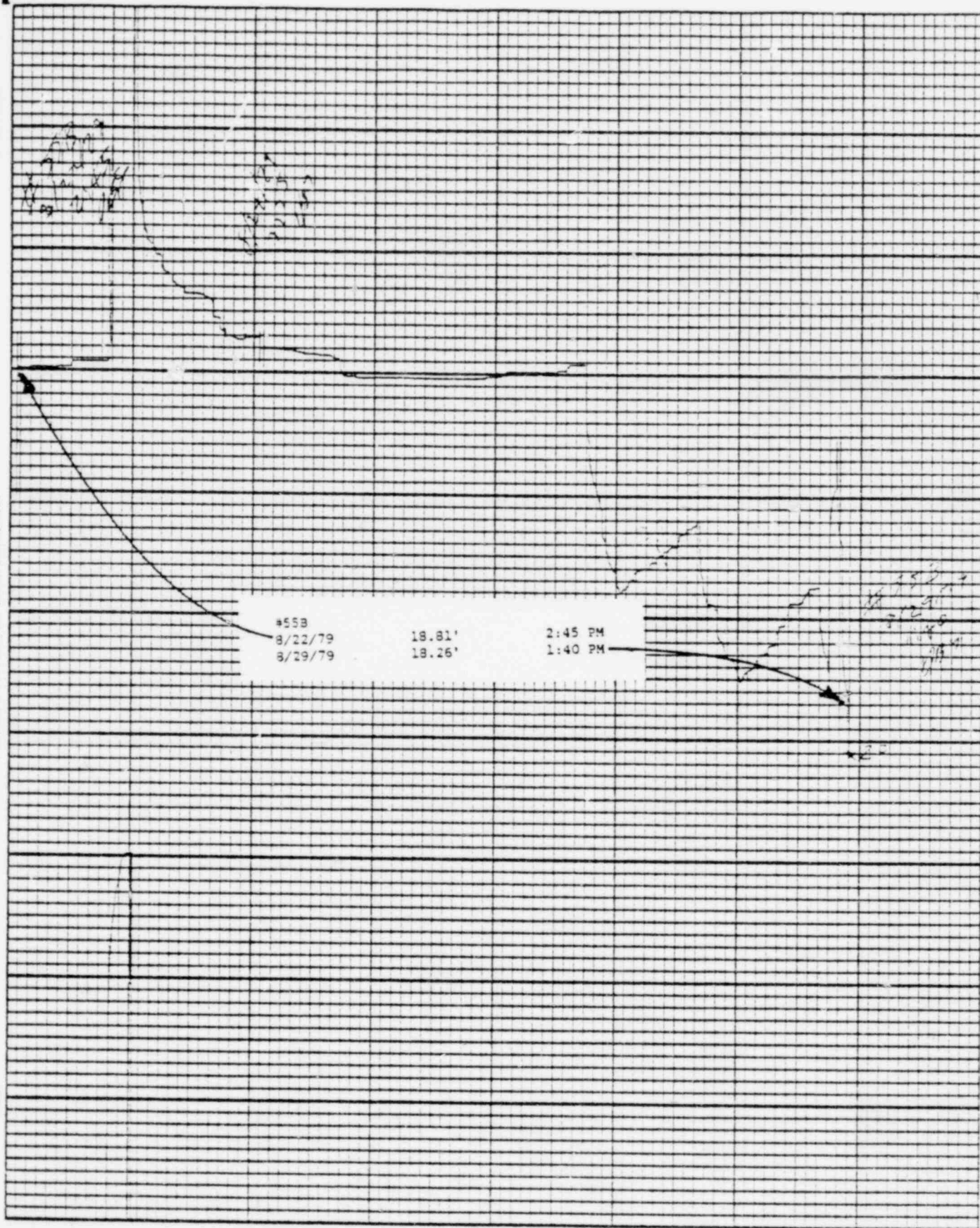
POOR
ORIGINAL

1019 072



POOR
ORIGINAL

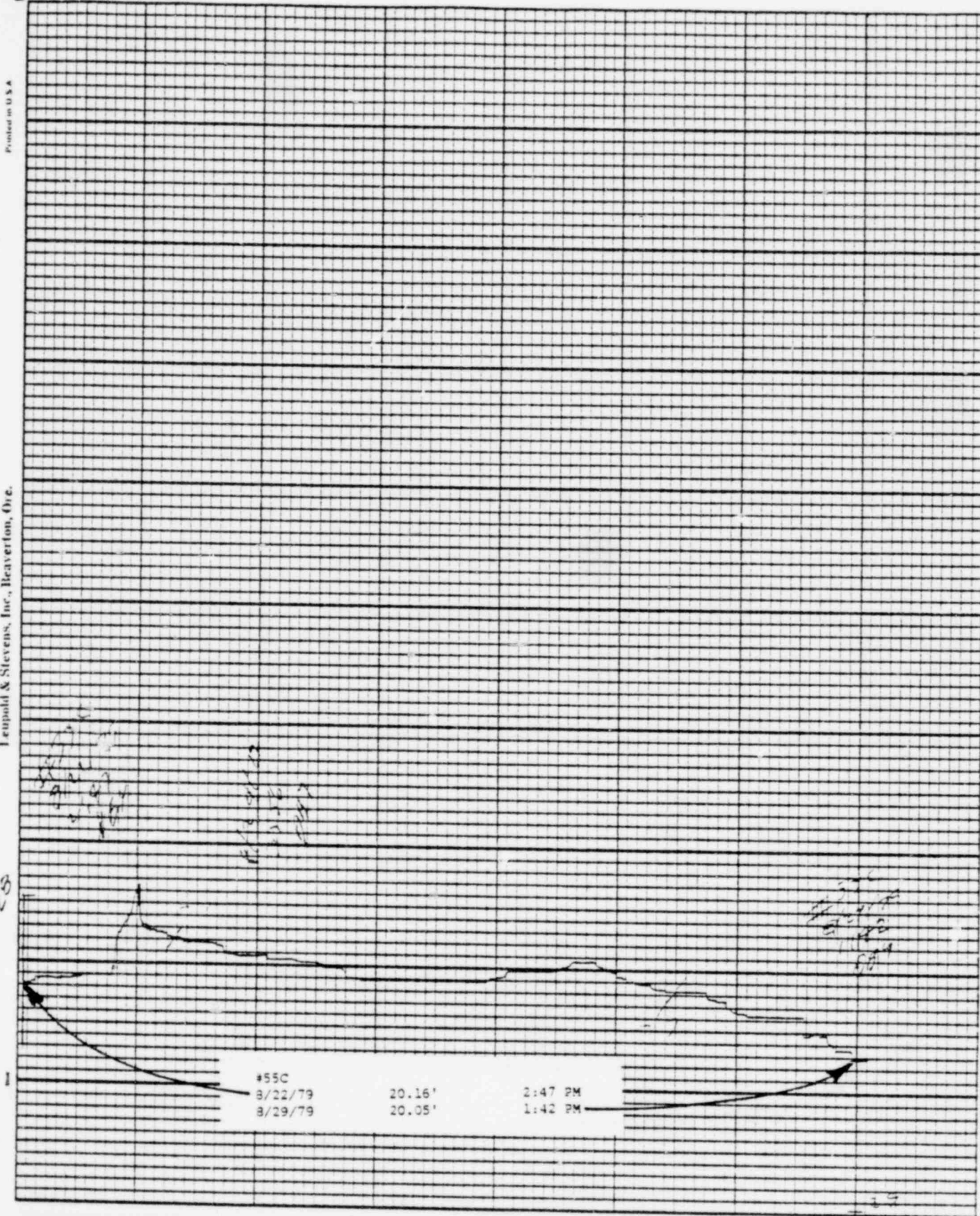
1019 073



POOR
ORIGINAL

1019 074

23



POOR
ORIGINAL

1019 075

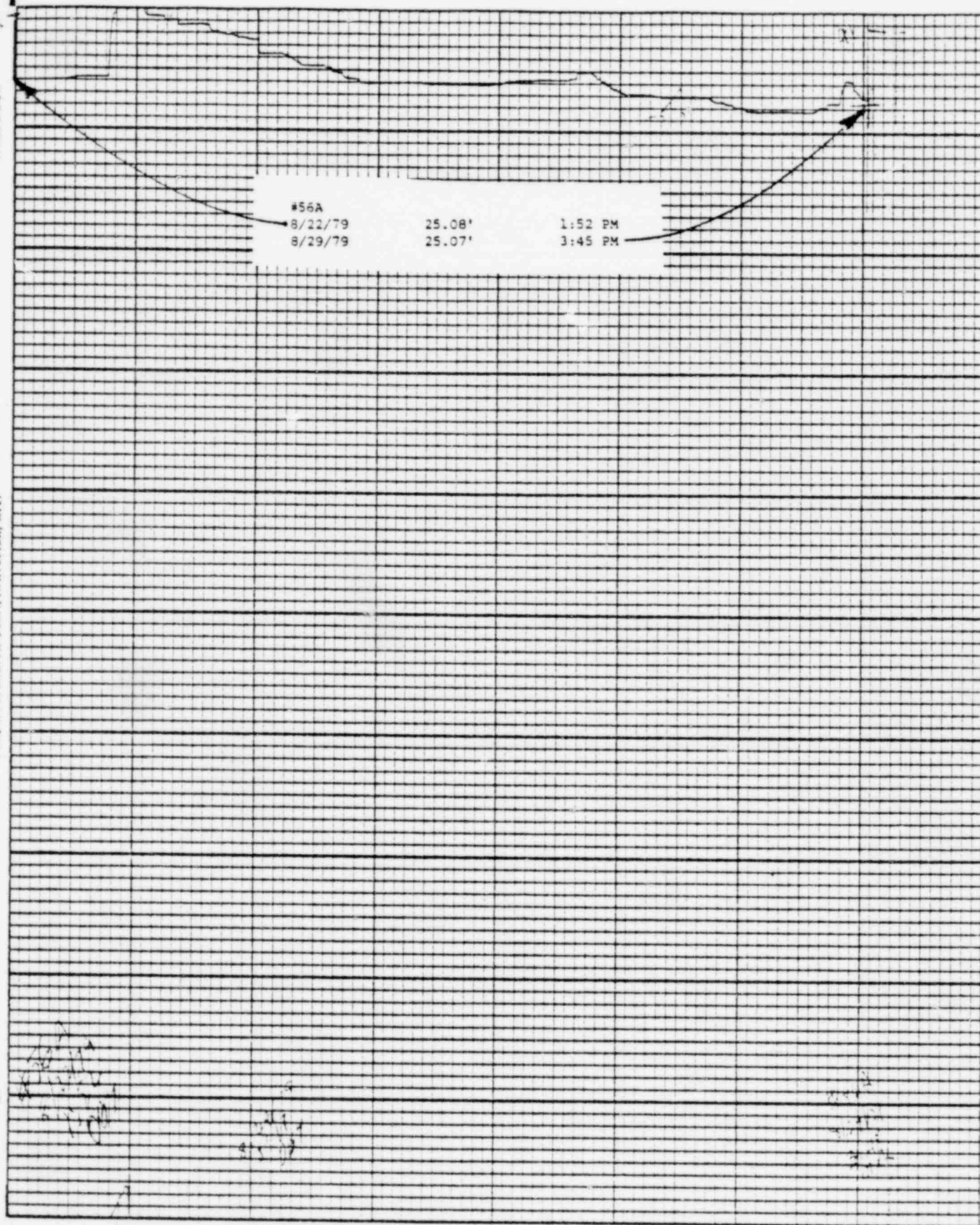
Printed in U.S.A.

Leupold & Stevens, Inc., Beaverton, Ore.

Chart F-1

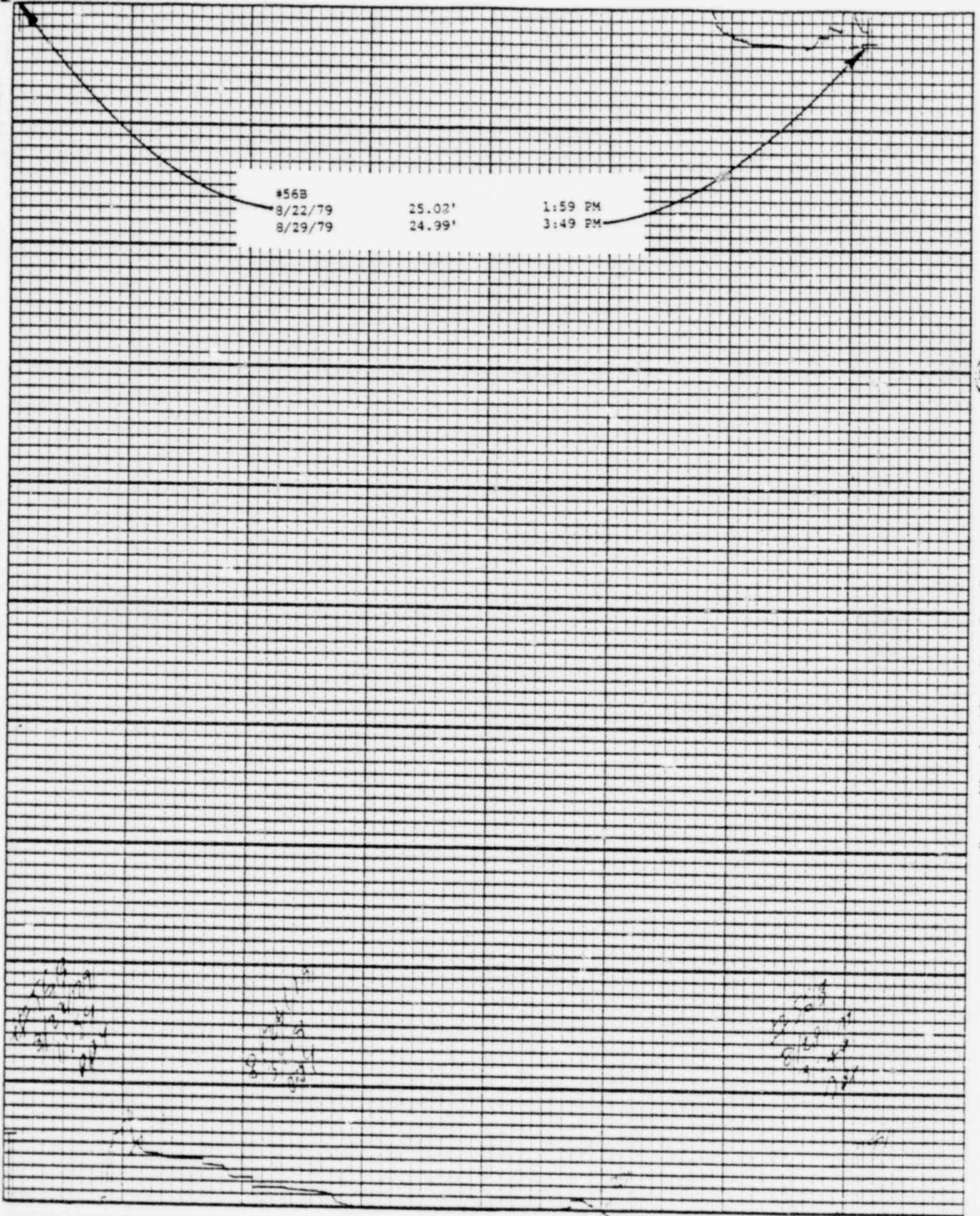
Stevens Water Level Recorder — Type F

(S)



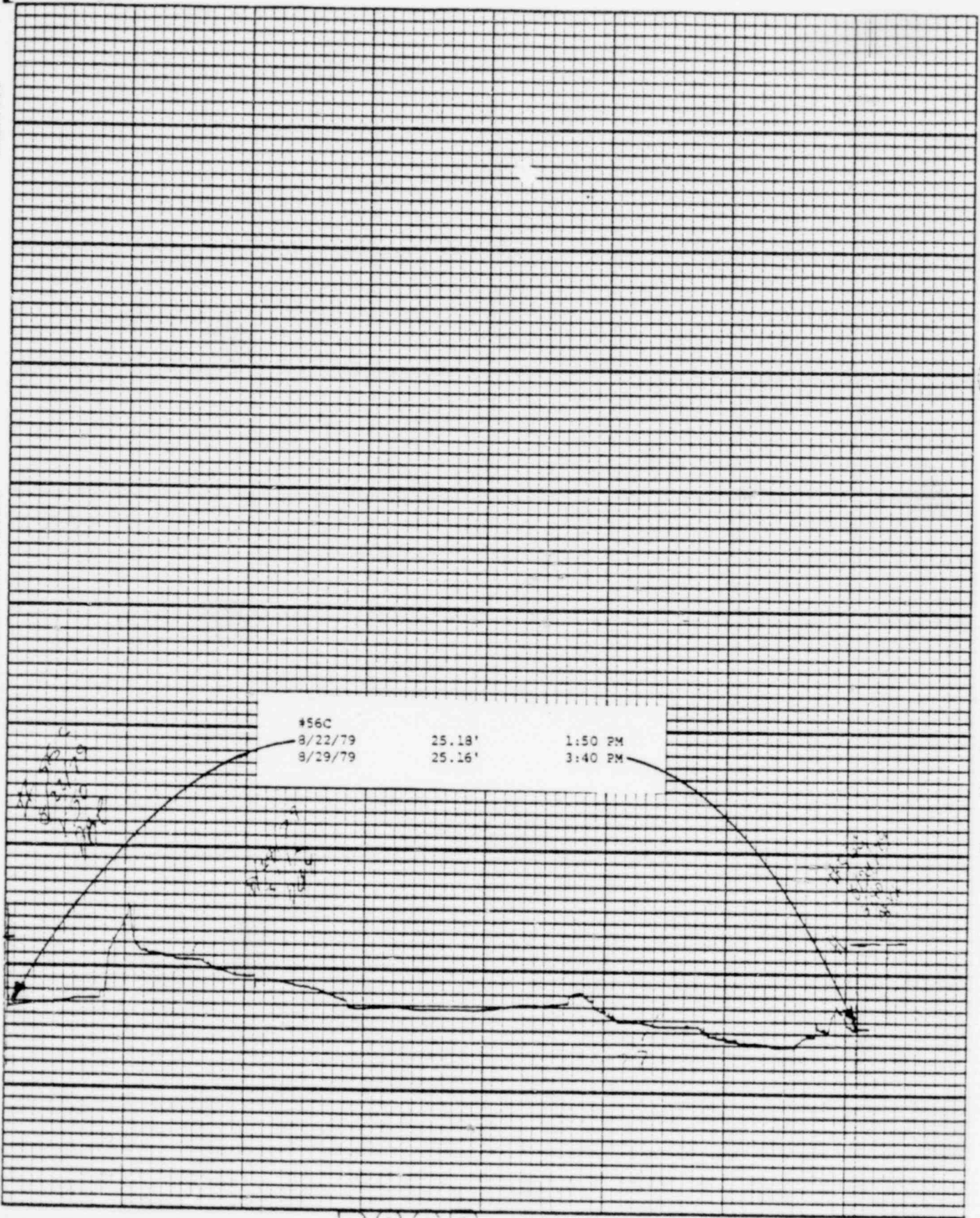
POOR
ORIGINAL

1019 076



POOR
ORIGINAL

1019 077



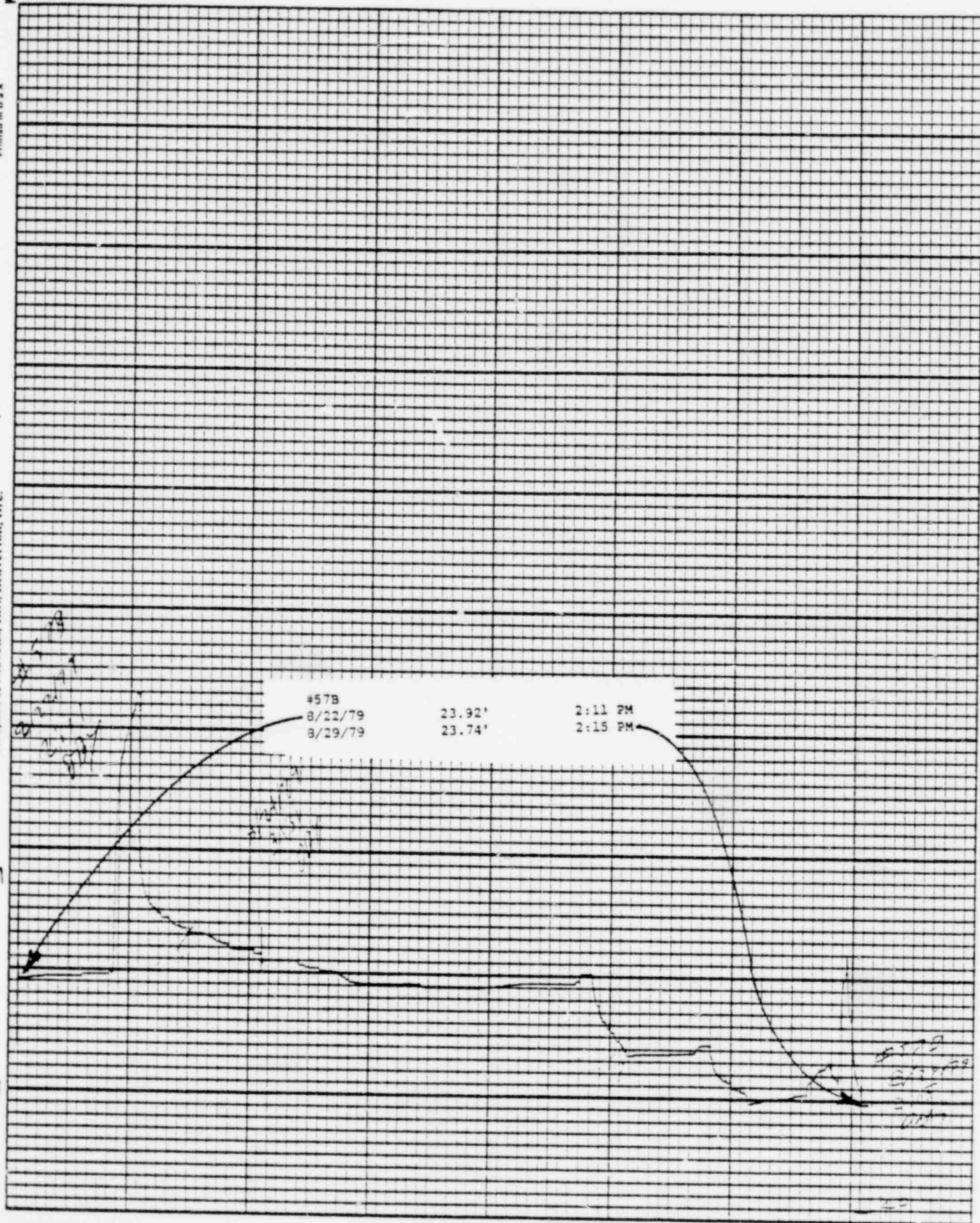
POOR
ORIGINAL

1019 073

Leupold & Stevens, Inc., Beaverlton, Ore.

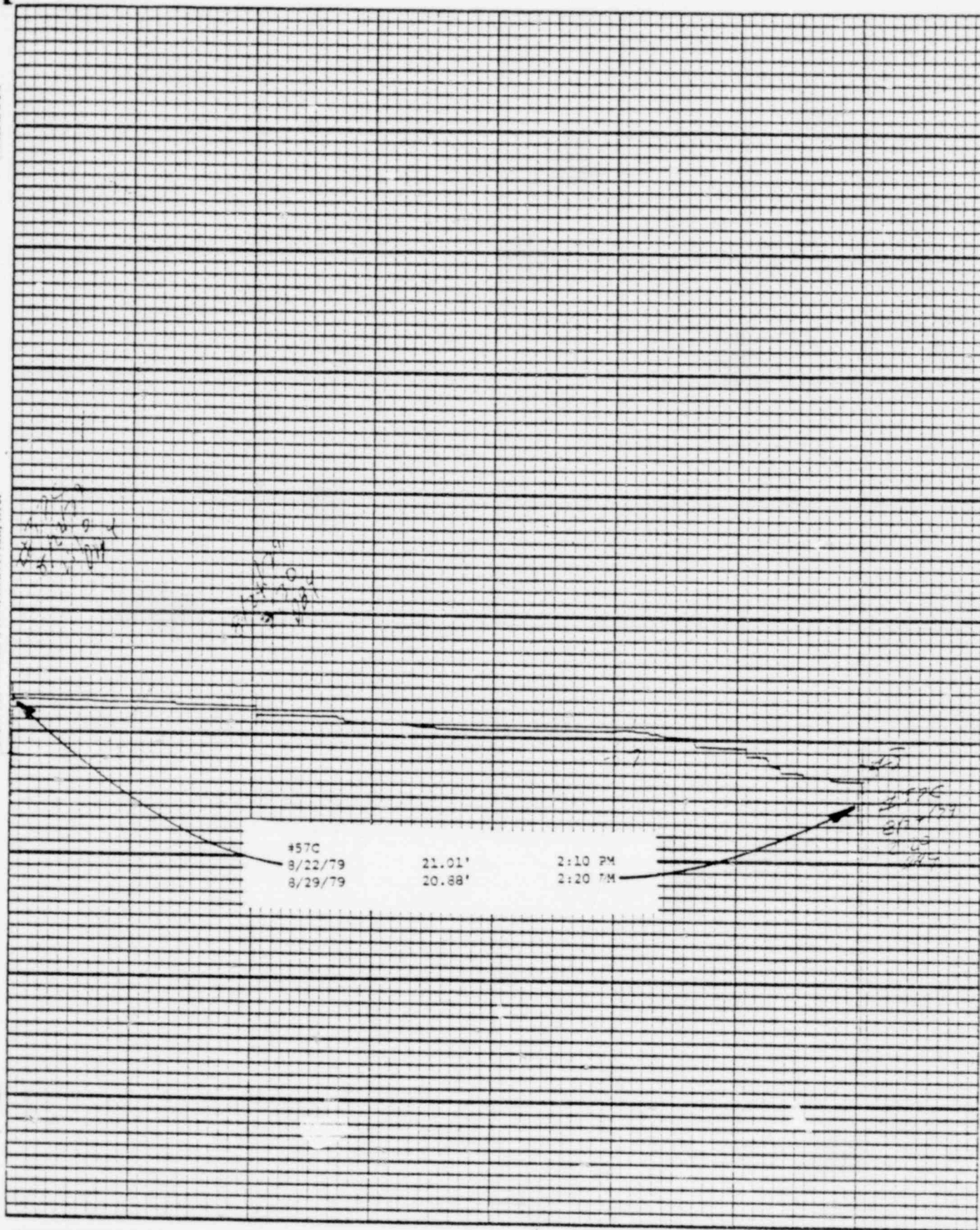
Stevens Water Level Recorder — Type F

(5)



POOR
ORIGINAL

1019 379



POOR
ORIGINAL

1019 080

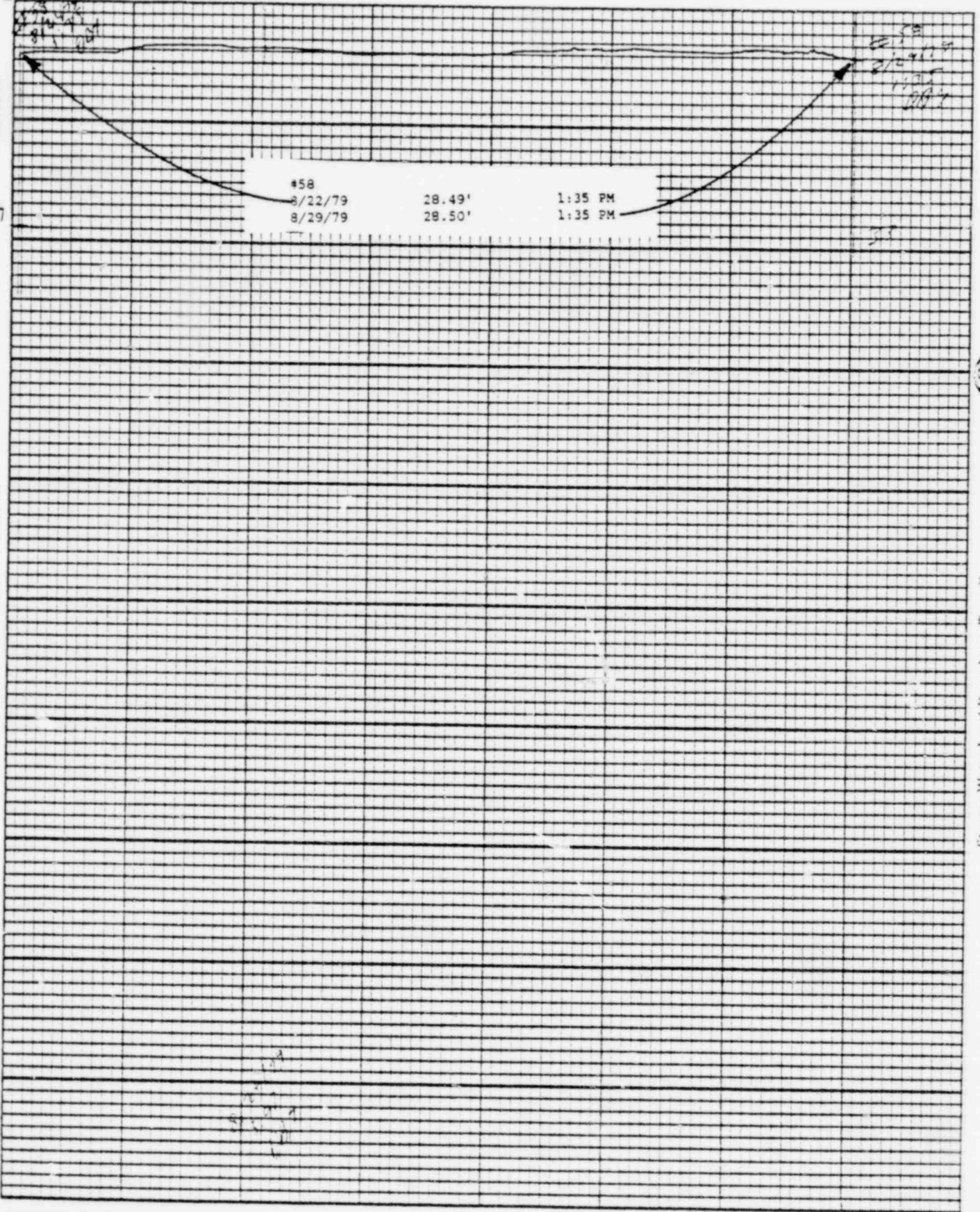
Printed in U.S.A.

Leupold & Stevens, Inc., Beaverton, Ore.

Chart F-1

(S)

Stevens Water Level Recorder — Type F



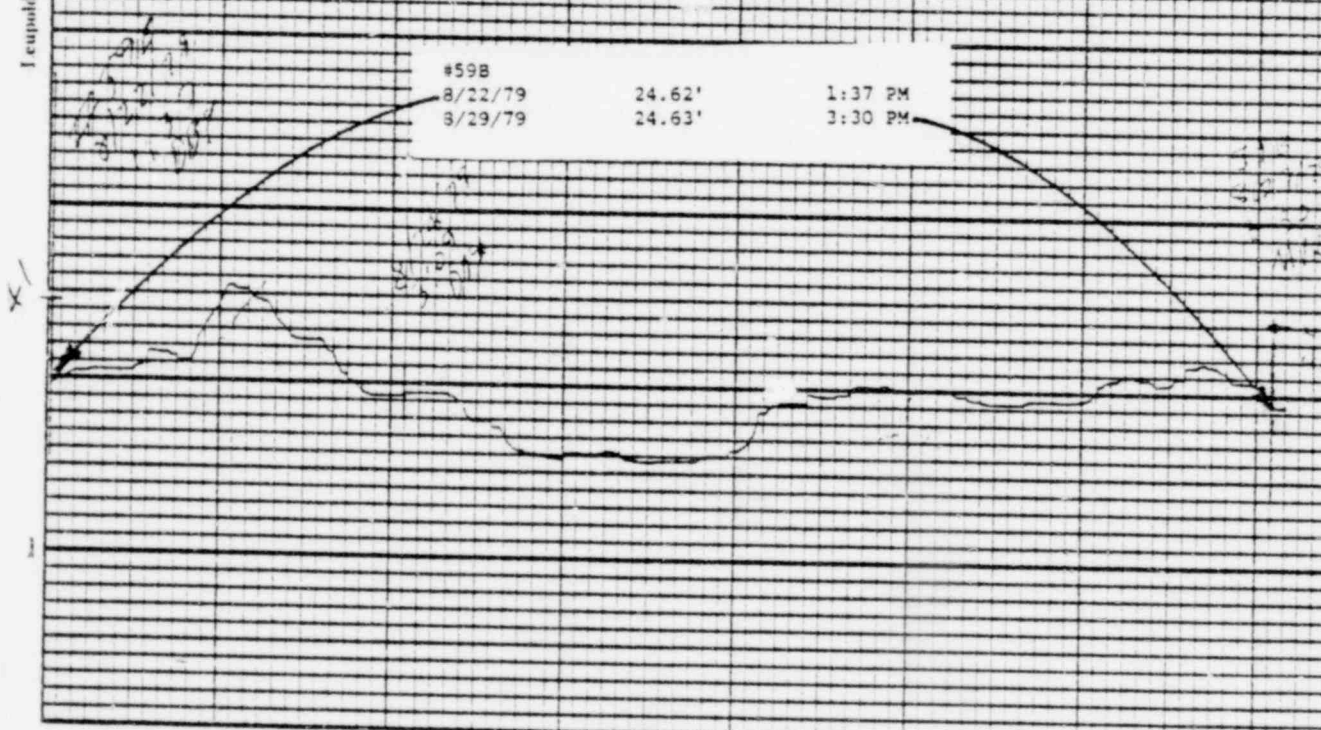
POOR
ORIGINAL

1019 081

Leupold & Stevens, Inc., Beaver Falls, Pa.

Stevens Water Level Recorder — Type F

(S)



POOR
ORIGINAL

1019 082

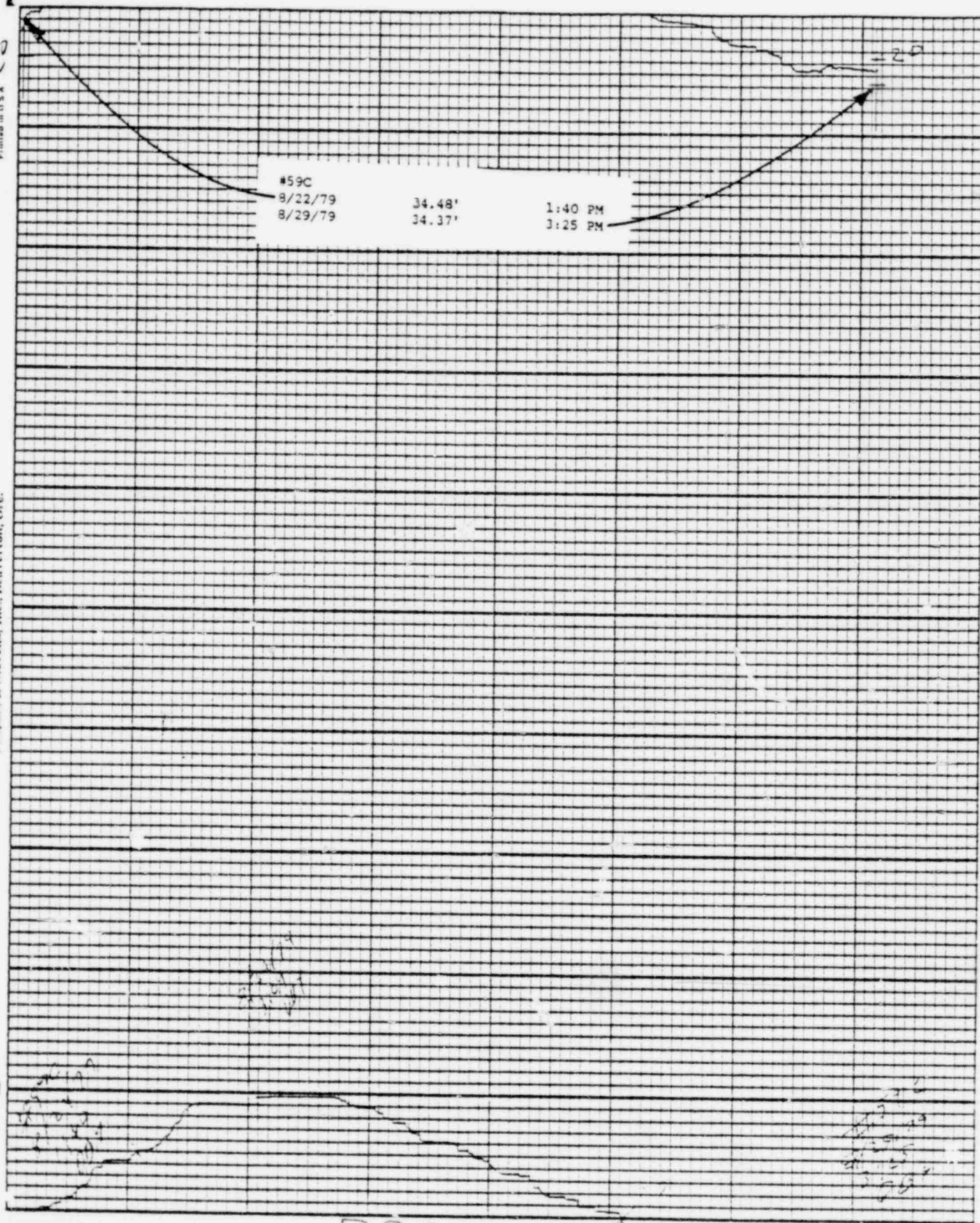
Printed in U.S.A.

Leupold & Stevens, Inc., Beaverfon, Ore.

Chart F-1

(S)

Stevens Water Level Recorder — Type F



PNEUMATIC PRESSURE TRANSDUCERS

8/29/79

<u>TRANSDUCER</u>	<u>WATER ELEVATION IN FEET</u>
P-1	9.6
P-2	9.9
P-3	6.4
P-4	12.8
P-5	13.5
P-6	15.7

DBY:bd

1019 084

BAILLY WELLS WITHOUT RECORDERS

8/29/79

<u>WELL #</u>	<u>WATER ELEVATION IN FEET</u>
62	32.42
65	27.52
67	23.31
72	11.01
73	11.42
74	14.78

DBY:bd

1019 085

POND LEVELS

<u>POND</u>	<u>8/29/79</u>
1	29.19'
2	30.48'
3	29.19'
4	23.94'
5	23.37'
6	33.58'
7	28.42'
8	DRY
9	28.56'
10	39.40'
11	40.62'
12	36.69'
13	38.10'

DBY:bd

WATER METER READINGS

<u>DATE</u>	<u>TIME</u>	<u>METER READING (GALLONS)</u>	<u>INSTANTANEOUS FLOW RATE (GPM)</u>
-------------	-------------	--	--

Sump Pump Discharge

8/29/79	4:16 PM	292,960,000	209
---------	---------	-------------	-----

Well Point Discharge

8/29/79	4:15 PM	8,744,000	Meter repaired and reinstalled
---------	---------	-----------	--------------------------------

Well Points on

7:30 AM to 4:00 PM on 8/27/79

7:30 AM to 4:00 PM on 8/28/79

7:30 AM to 3:30 PM on 8/29/79

DBY:bd

1019 087