



Northern Indiana Public Service Company

Nuclear Staff
RR # 3, Box 501
Chesterton, IN 46304
August 10, 1979

BAILLY GENERATING STATION N-1

Mr. Ronald Ballard
Environmental Projects Branch No. 1
Directorate of Licensing
U.S. Nuclear Regulatory Commission
Washington, D.C. 20545

RE: NORTHERN INDIANA PUBLIC SERVICE COMPANY
BAILLY GENERATING STATION NUCLEAR 1
DOCKET 50-367

Dear Mr. Ballard:

Enclosed herewith are ten (10) copies of the following:

1. Well Charts for 7/25/79 - 8/1/79
2. Bailly Wells Without Recorders for 8/1/79
3. Pond Levels for 8/1/79
4. Pneumatic Pressure Transducers for 8/2/79
5. Water Meter Readings for 8/1/79
6. USGS Wells for 8/2/79

Sincerely,

R. J. Bohm
R. J. Bohm
Manager, Nuclear Staff

OK BR
DBY:lu

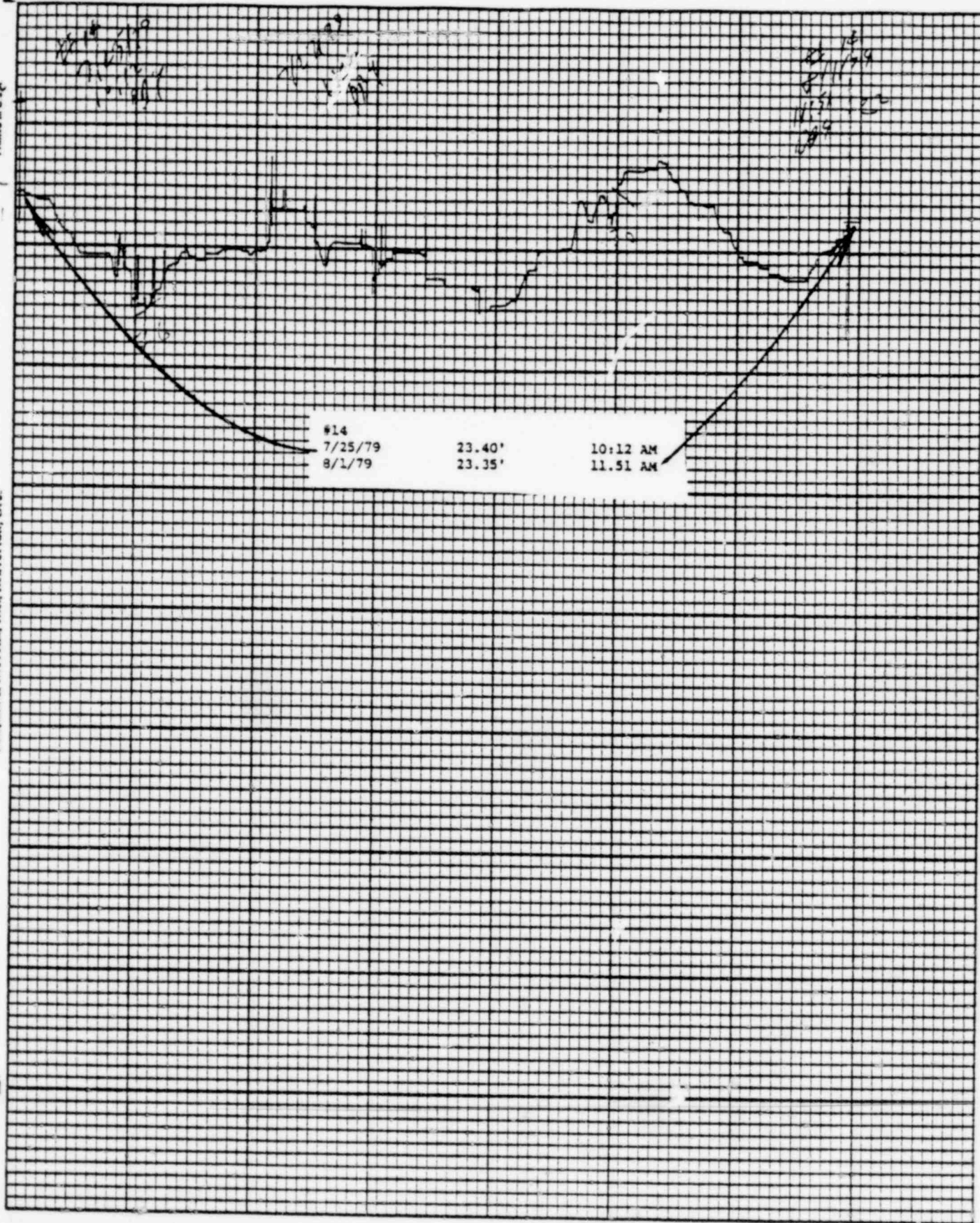
Enclosures

File: Ground Water Observation Monitoring Wells

*Doody
ES
11*

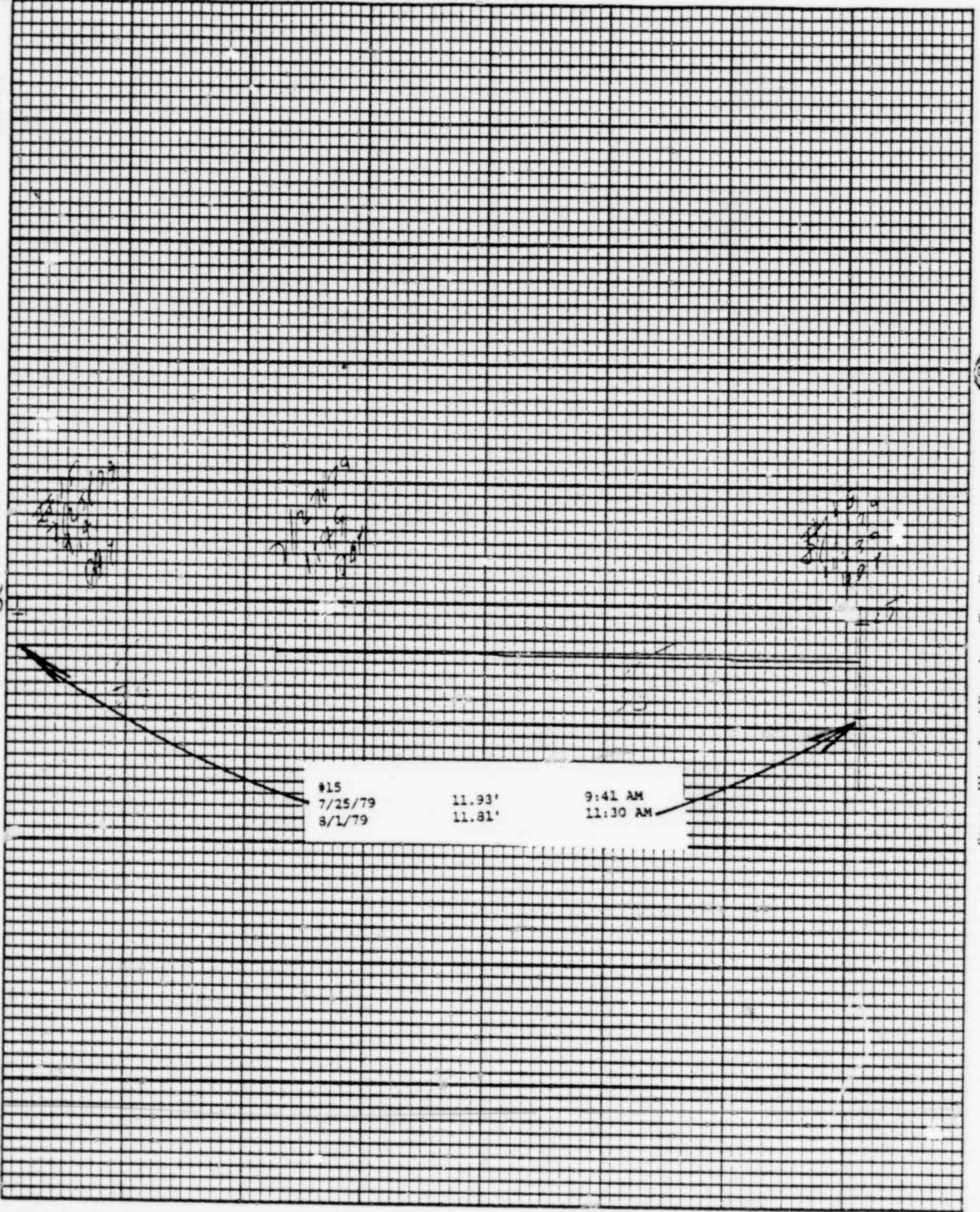
847 182

7908220333



POOR ORIGINAL

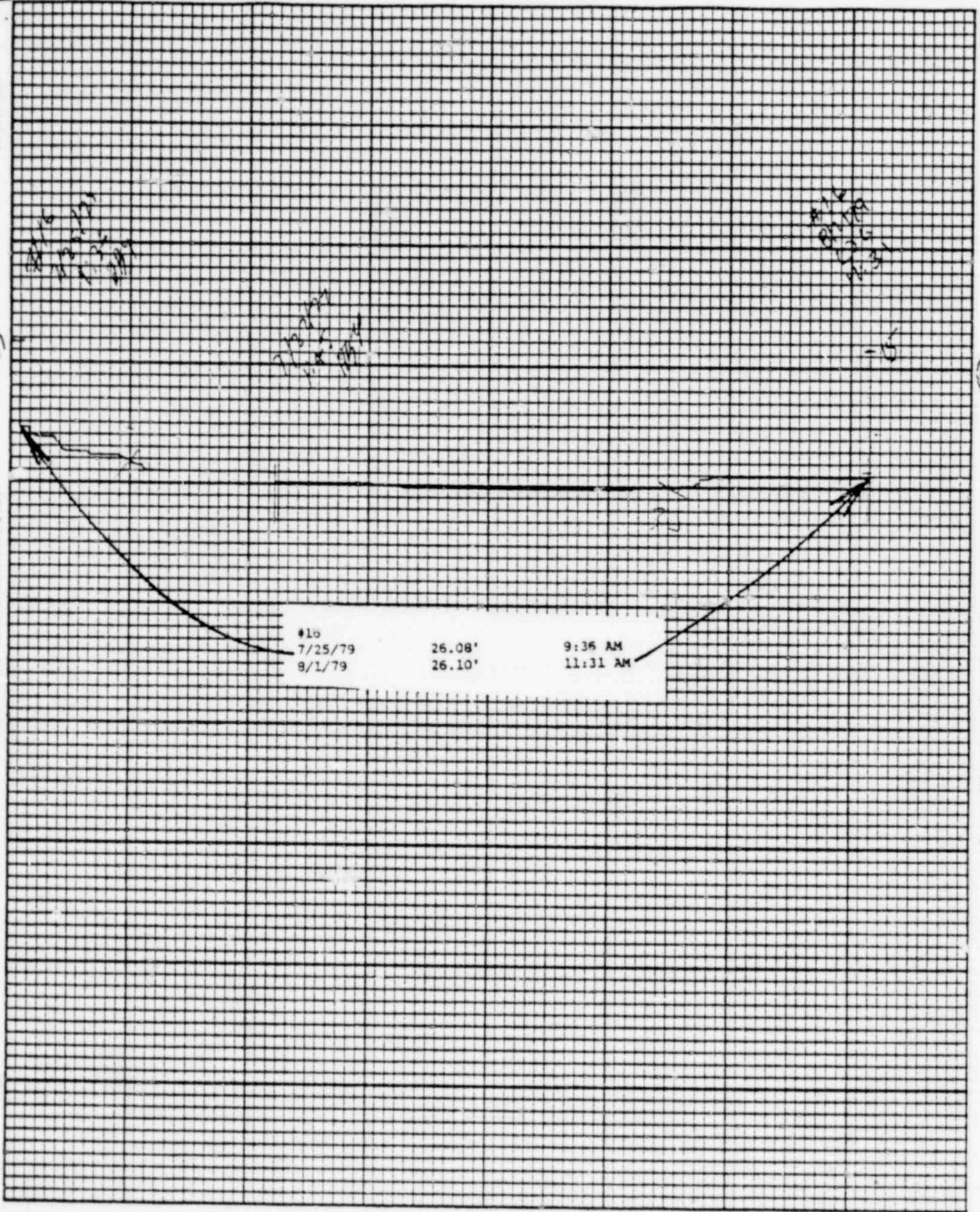
847 183



1000 ORIGINAL

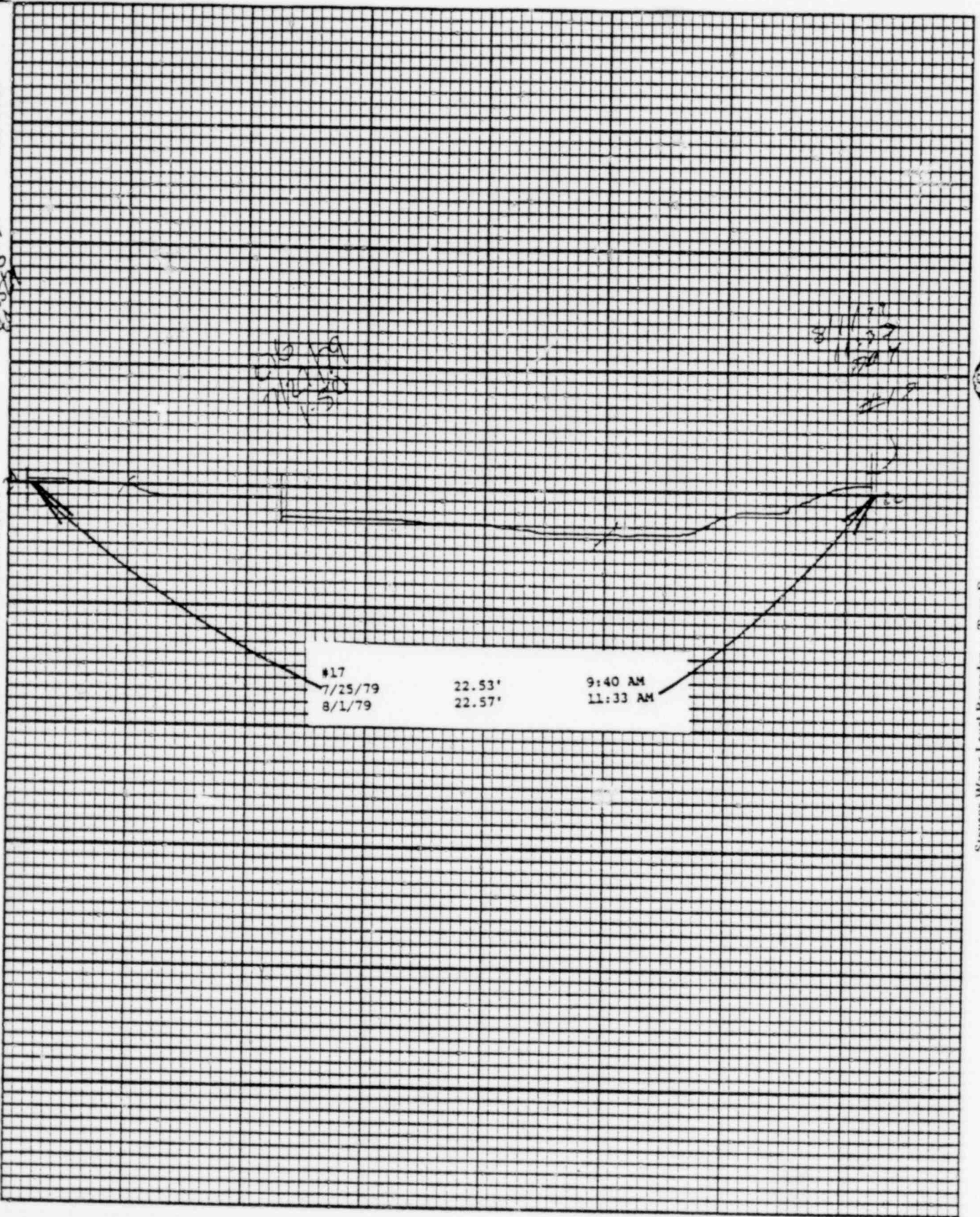
Leupold & Stevens, Inc., Heaverlon, Ore.

Stevens Water Level Recorder — Type F



POOR ORIGINAL

847 185



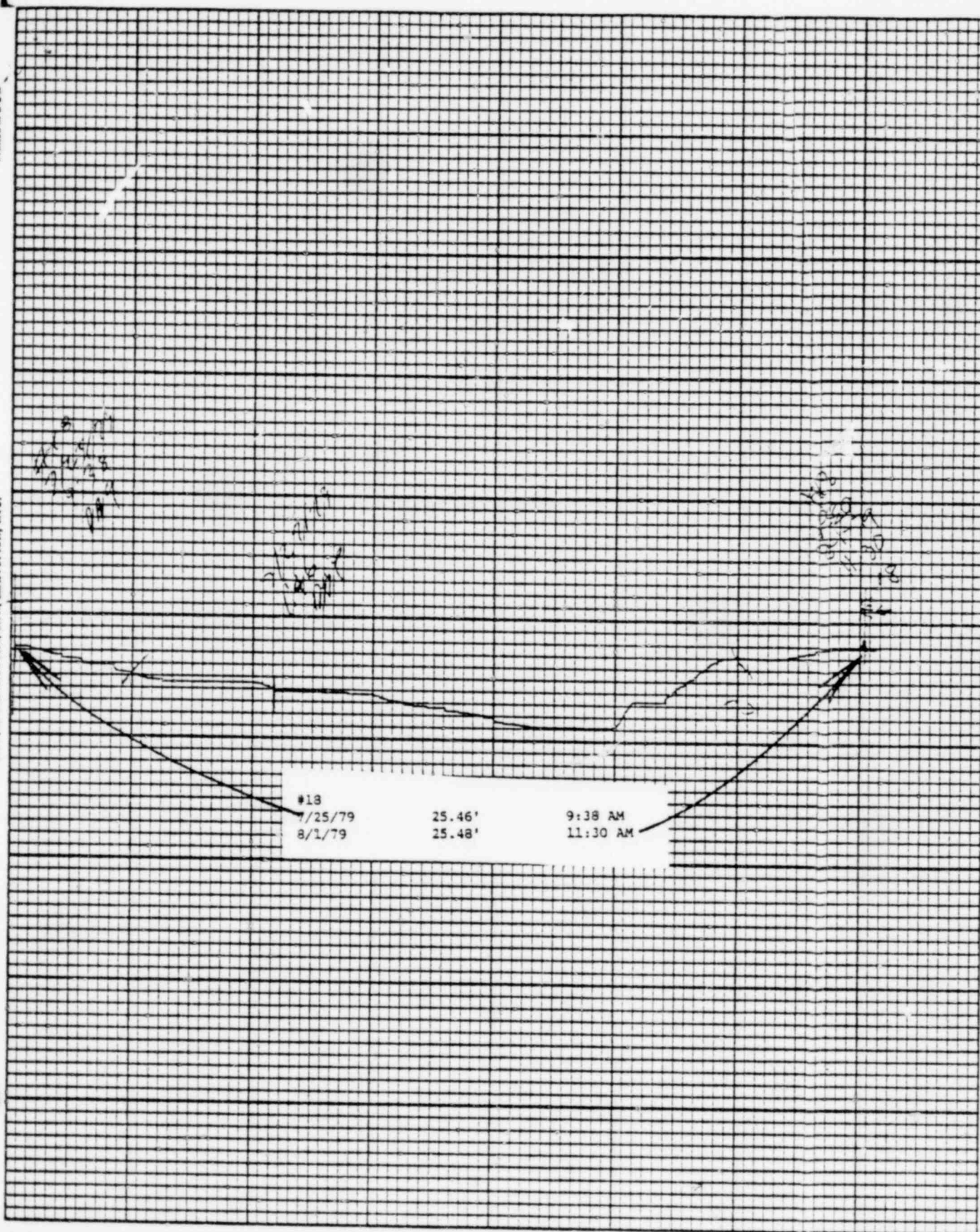
POOR ORIGINAL

847 186

Printed in U.S.A.

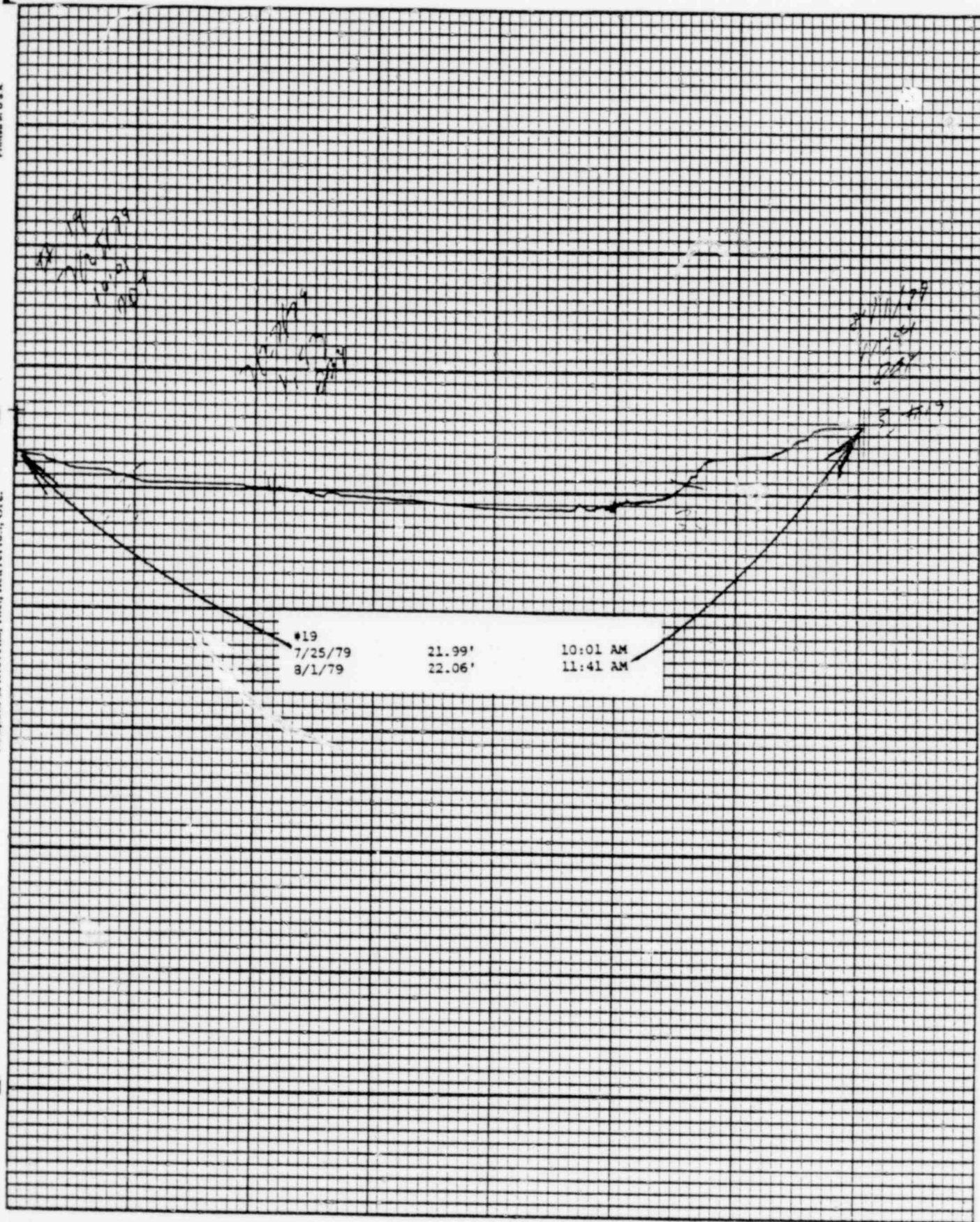
Chart P-1

Stevens Water Level Recorder — Type F



POOR ORIGINAL

847 187



POOR ORIGINAL

847 188

Printed in U.S.A.

11-20
D6
7/25/79

Leupold & Stevens, Inc., Beaverton, Ore.

Chart F-1

(S)

Stevens Water Level Recorder — Type F

#20		
7/25/79	19.87'	10:00 AM
8/1/79	19.93'	11:42 AM

POOR ORIGINAL

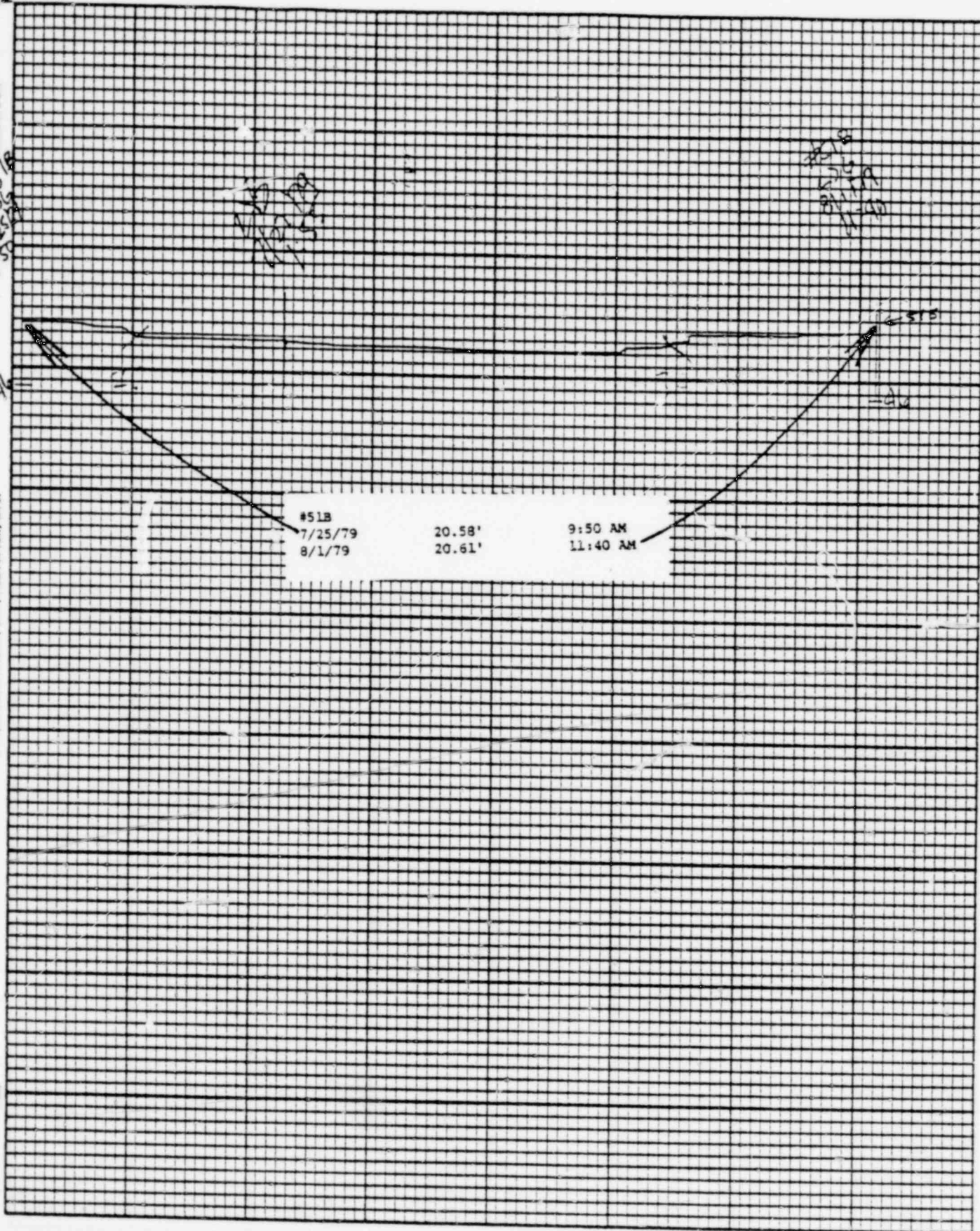
847 189

Printed in U.S.A.

Leupold & Stevens, Inc., Beaverton, Ore.

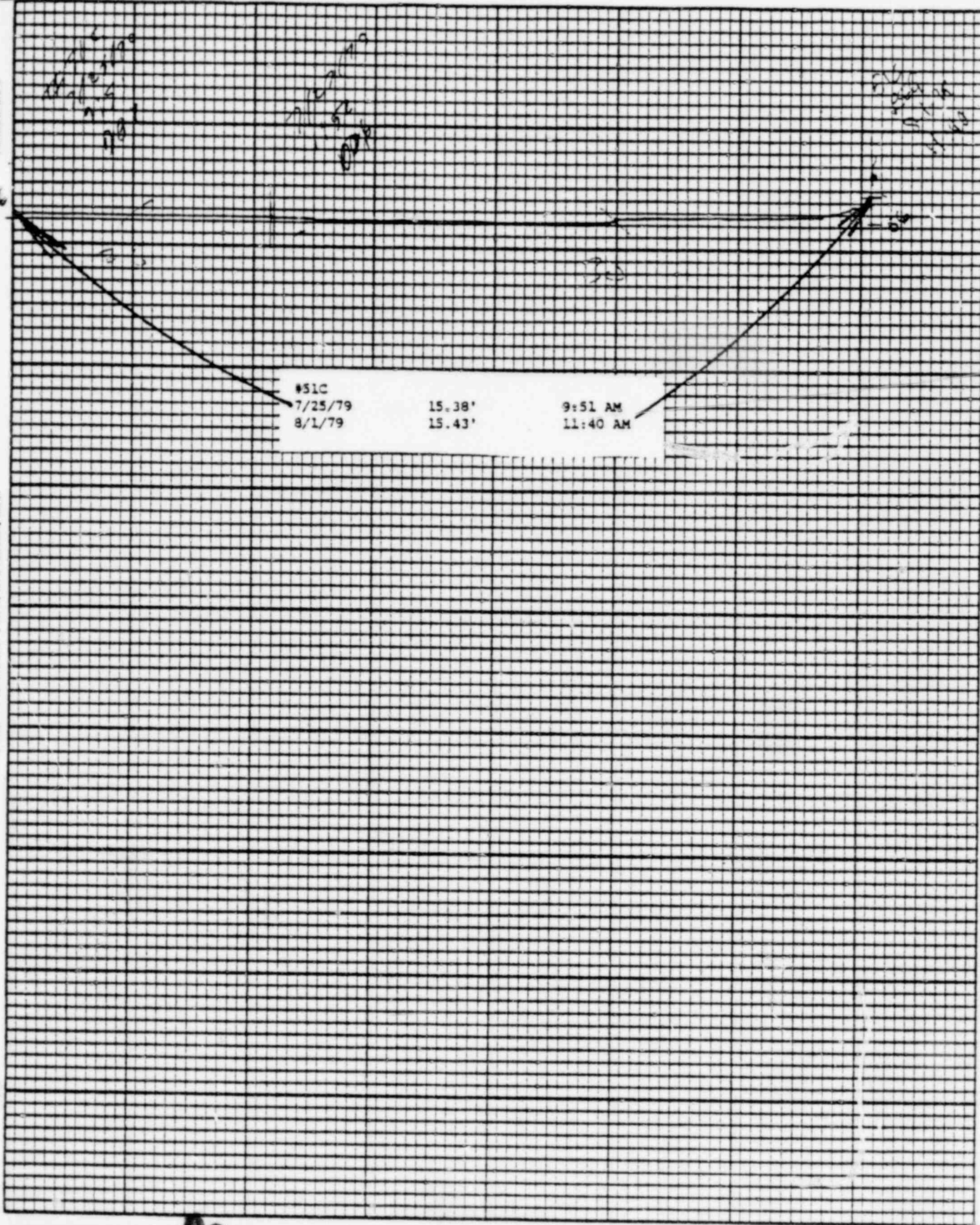
Chart P-1

Stevens Water Level Recorder — Type F



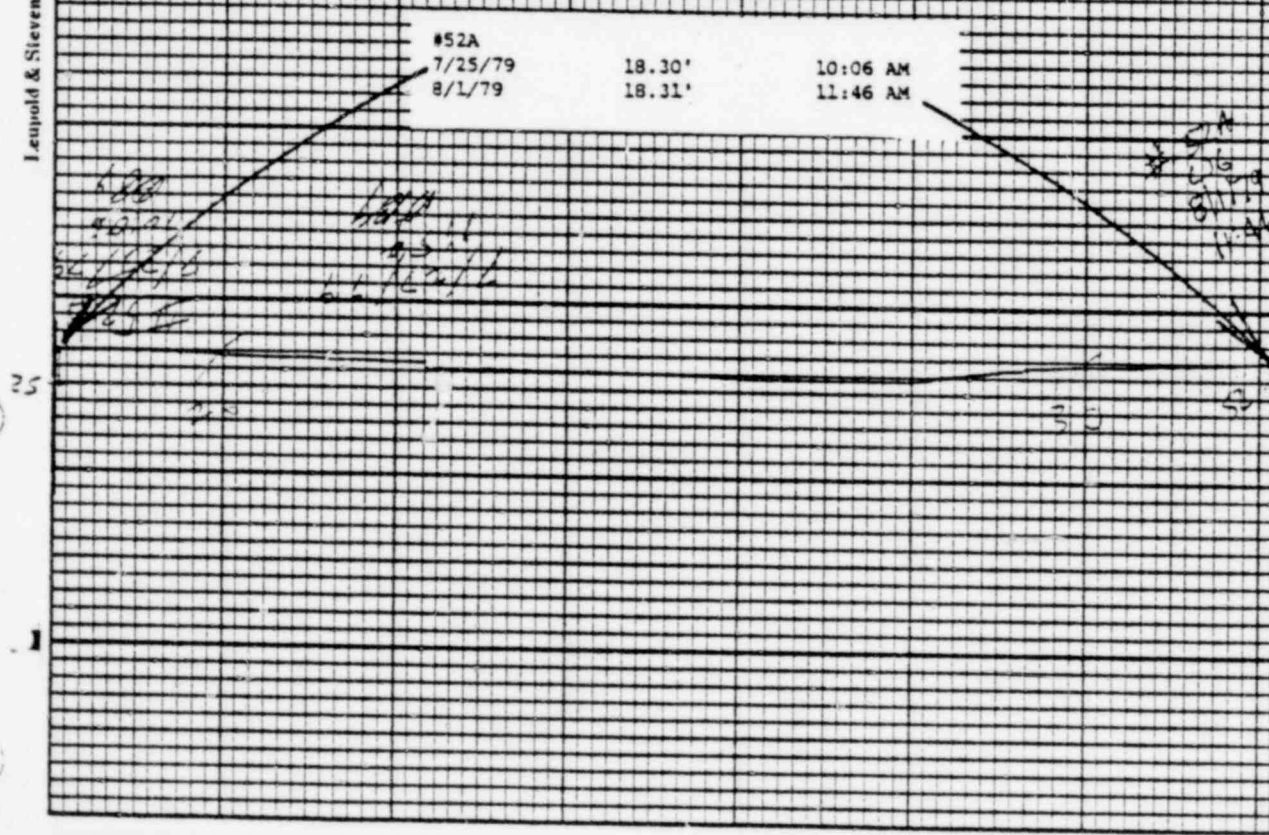
POOR ORIGINAL

847 190



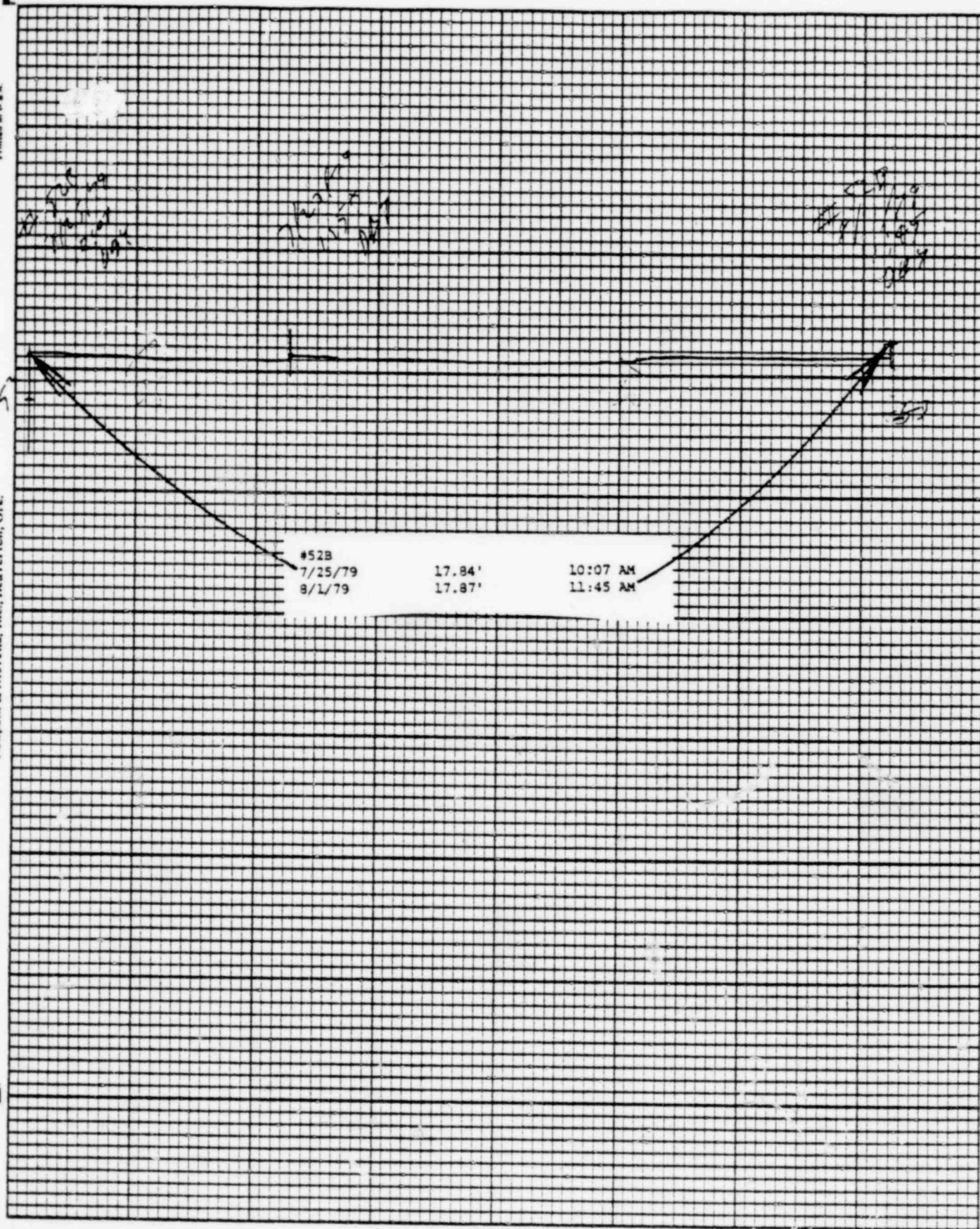
Leupold & Stevens, Inc., Beaverton, Ore.

Stevens Water Level Recorder — Type F



POOR ORIGINAL

847 192

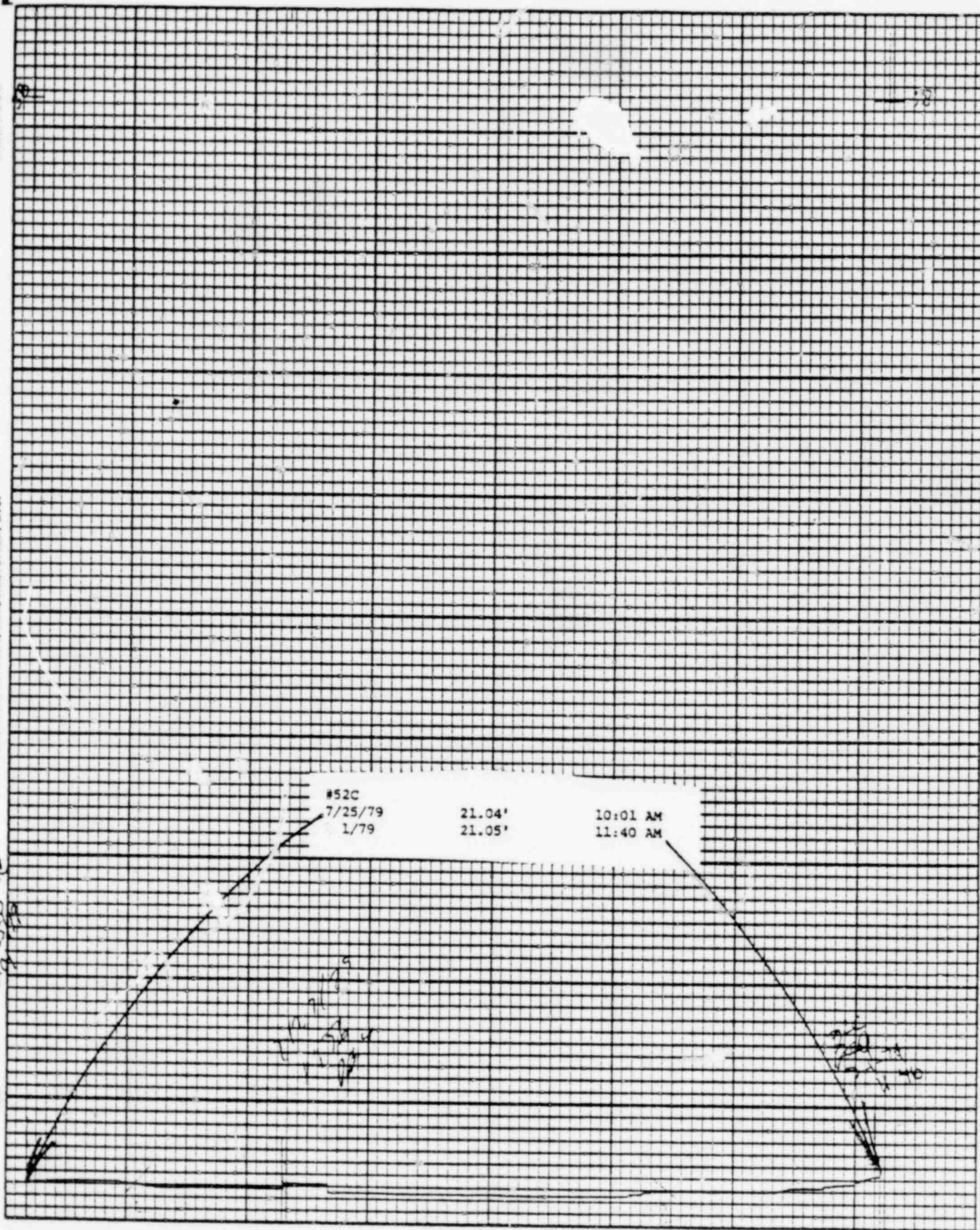


POOR ORIGINAL

847 193



10.75-25.02
10.75-25.02



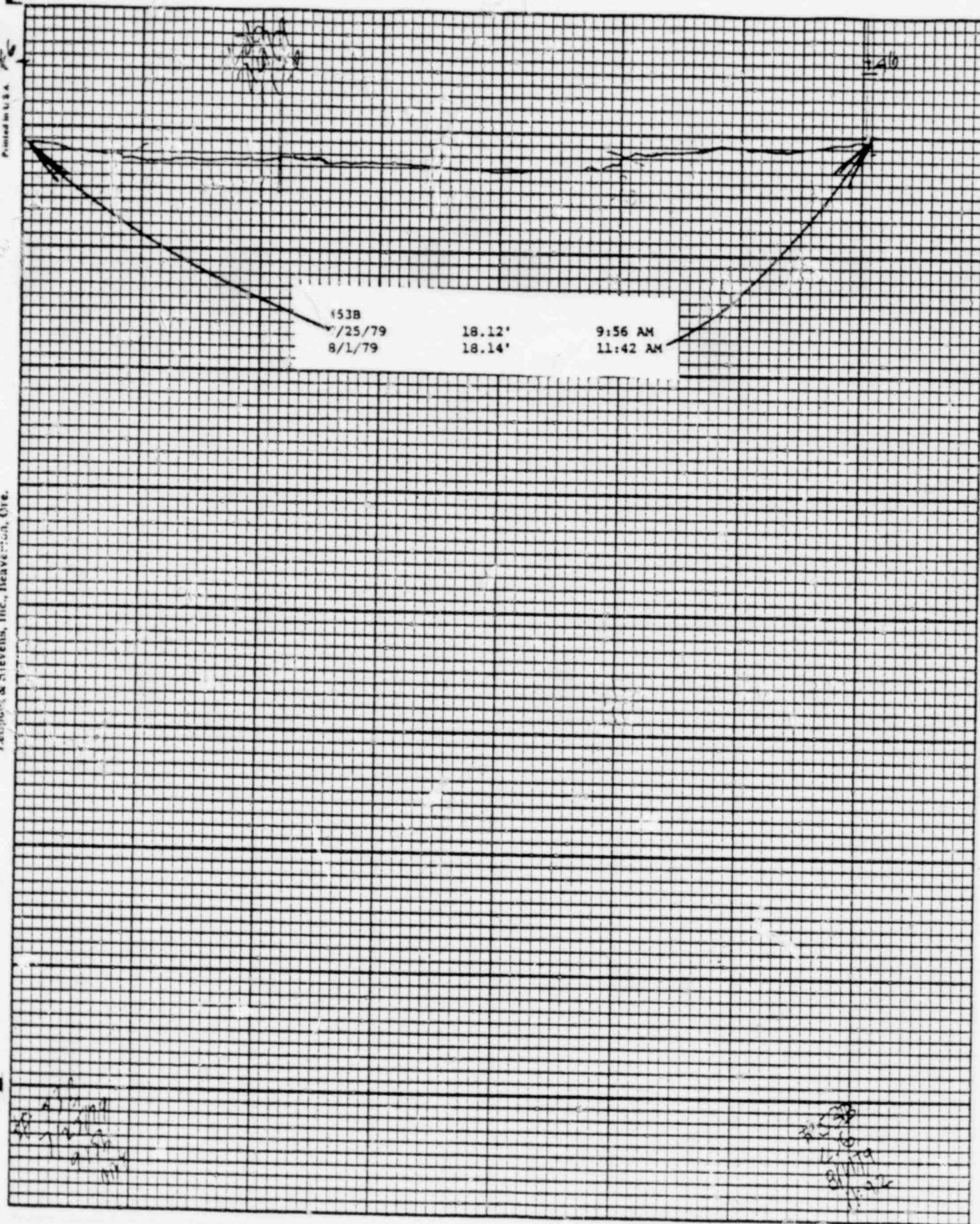
POOR ORIGINAL

847 194

#53A
7/25/79 19.04' 9:57 AM
8/1/79 19.04' 11:46 AM

POOR ORIGINAL

847 195



POOR ORIGINAL

847 196

2/25/79
9:56 AM

Leupold & Stevens, Inc., Heaverton, Ore.

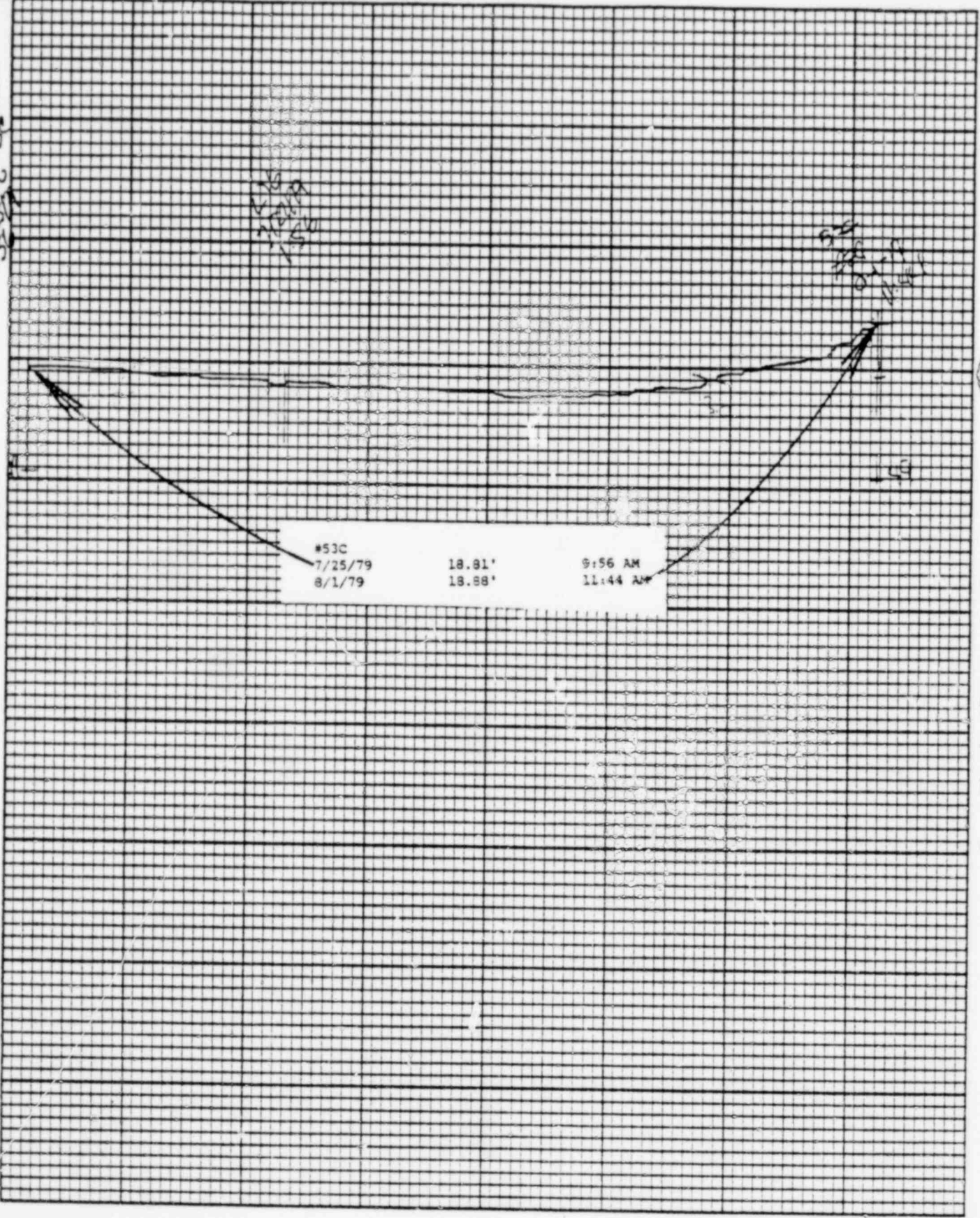
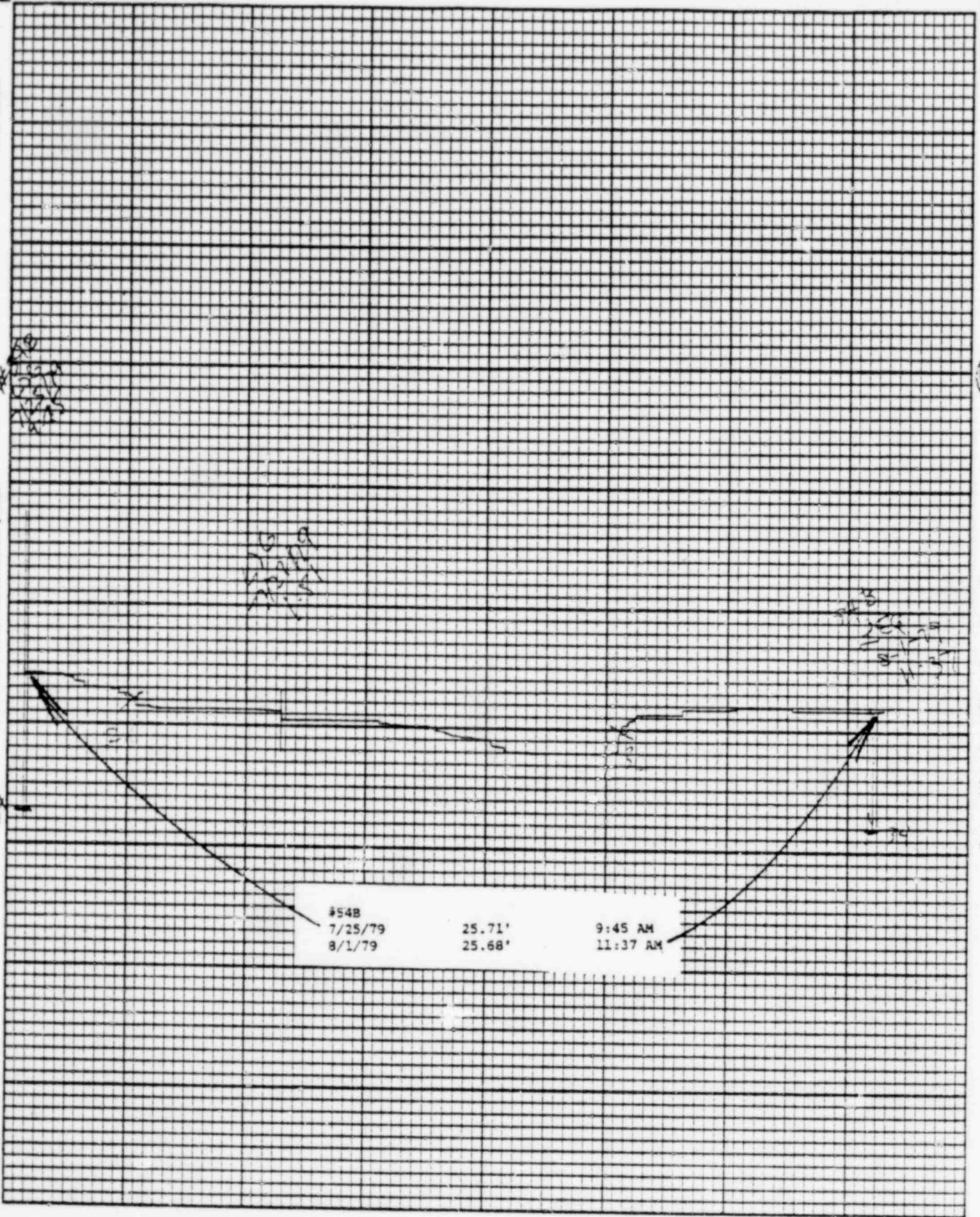


Chart F-1

Stevens Water Level Recorder — Type F

POOR ORIGINAL

847 197



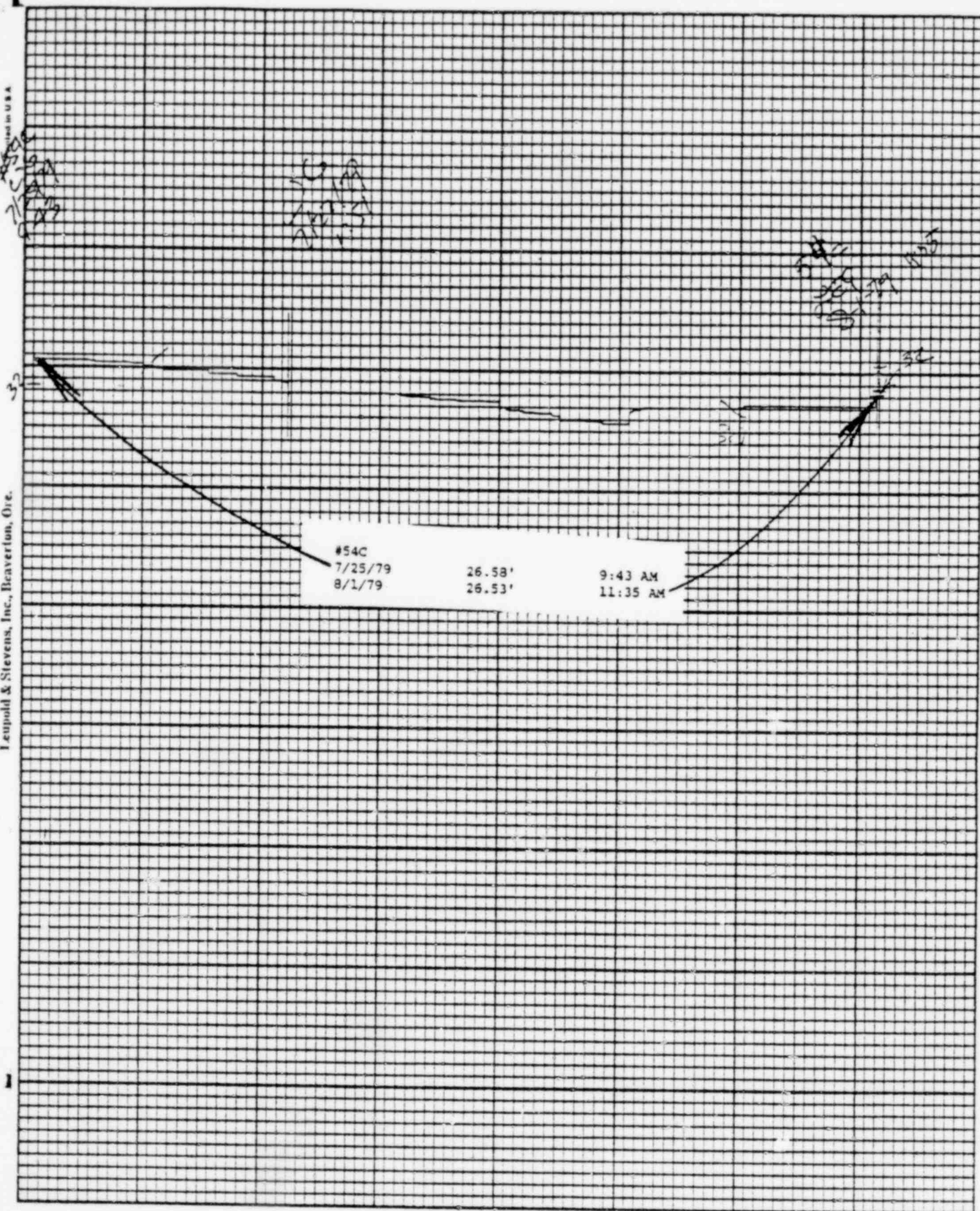
POOR ORIGINAL

847 198

123



Stevens Water Level Recorder — Type F



POOR ORIGINAL

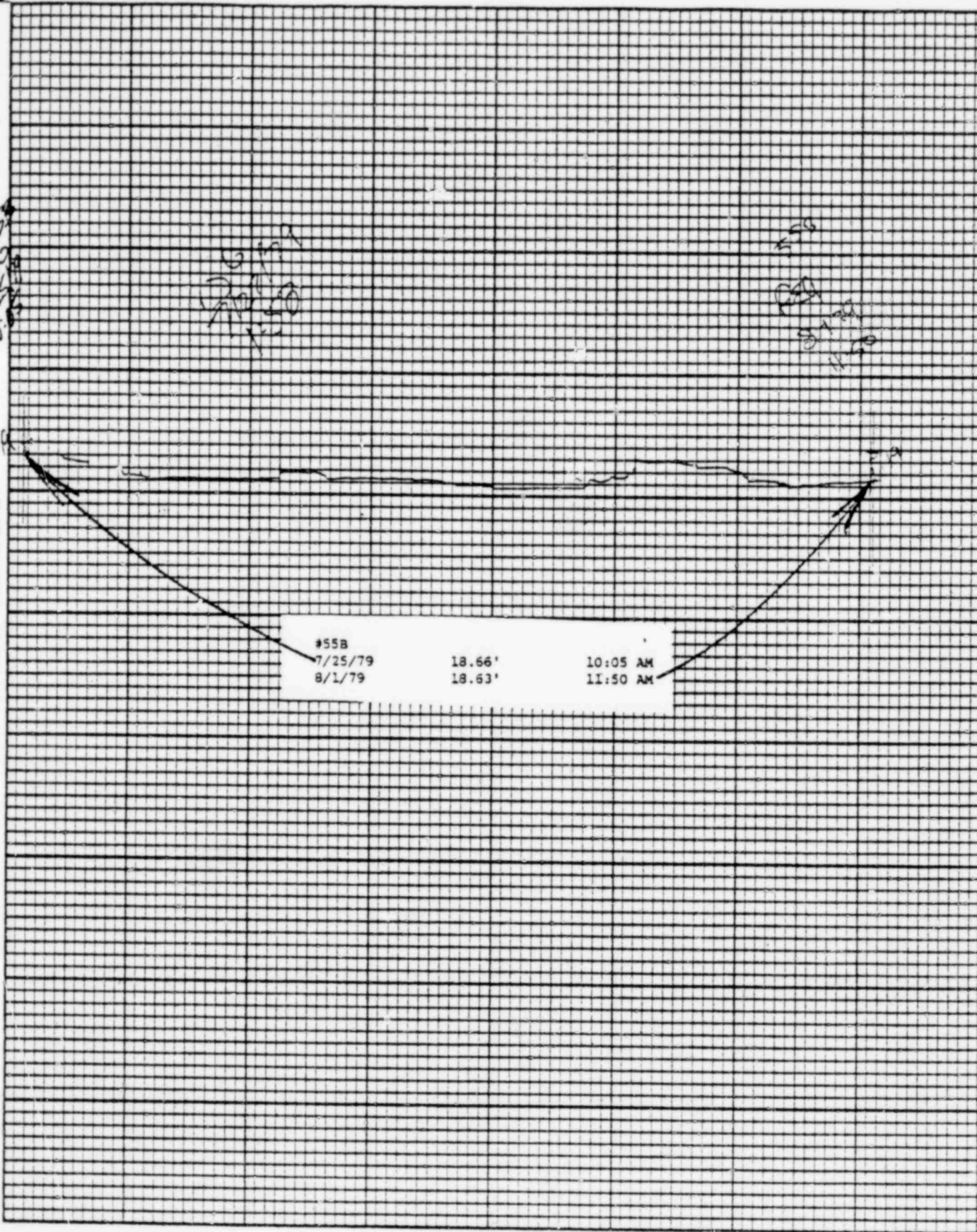
847 199

Printed in U.S.A.

Leupold & Stevens, Inc., Beaverlton, Ore.

Chart F-1

Stevens Water Level Recorder — Type F



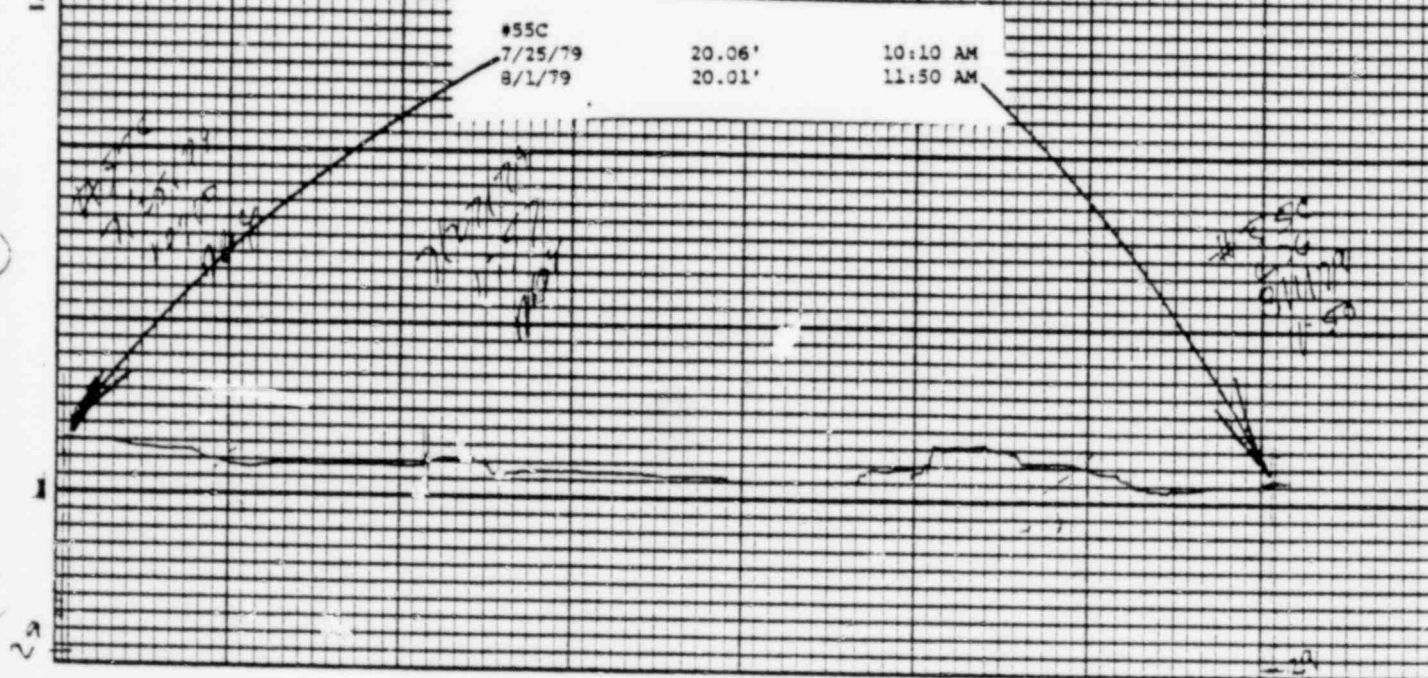
POOR ORIGINAL

847 200

Leupold & Stevens, Inc., Beaverton, Ore.

Chart P-1

Stevens Water Level Recorder — Type F



POOR ORIGINAL

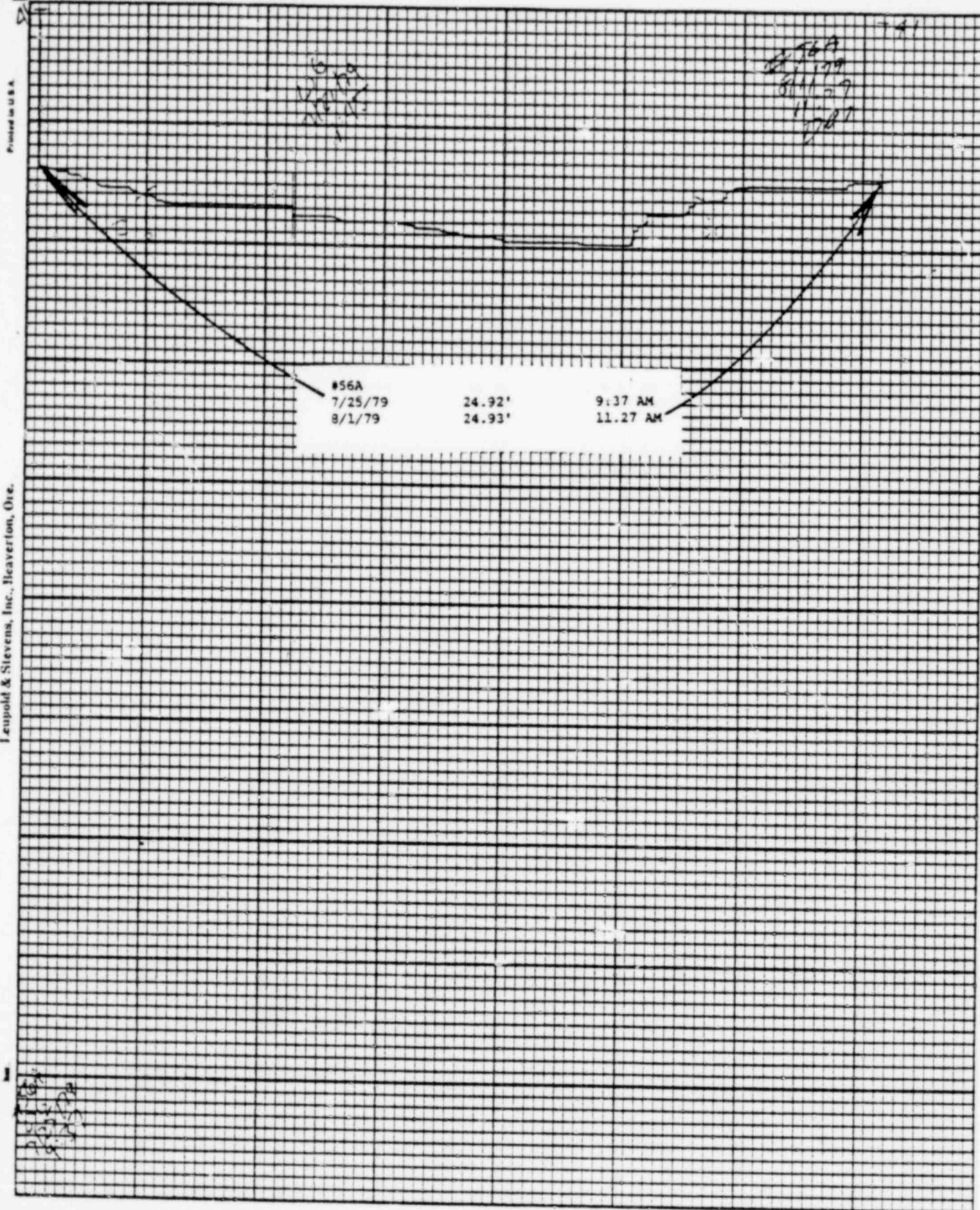
847 201

Printed in U.S.A.

Leupold & Stevens, Inc., Heaverlon, Ore.

Chart F-4

Stevens Water Level Recorder — Type F



PCOR ORIGINAL

847 202

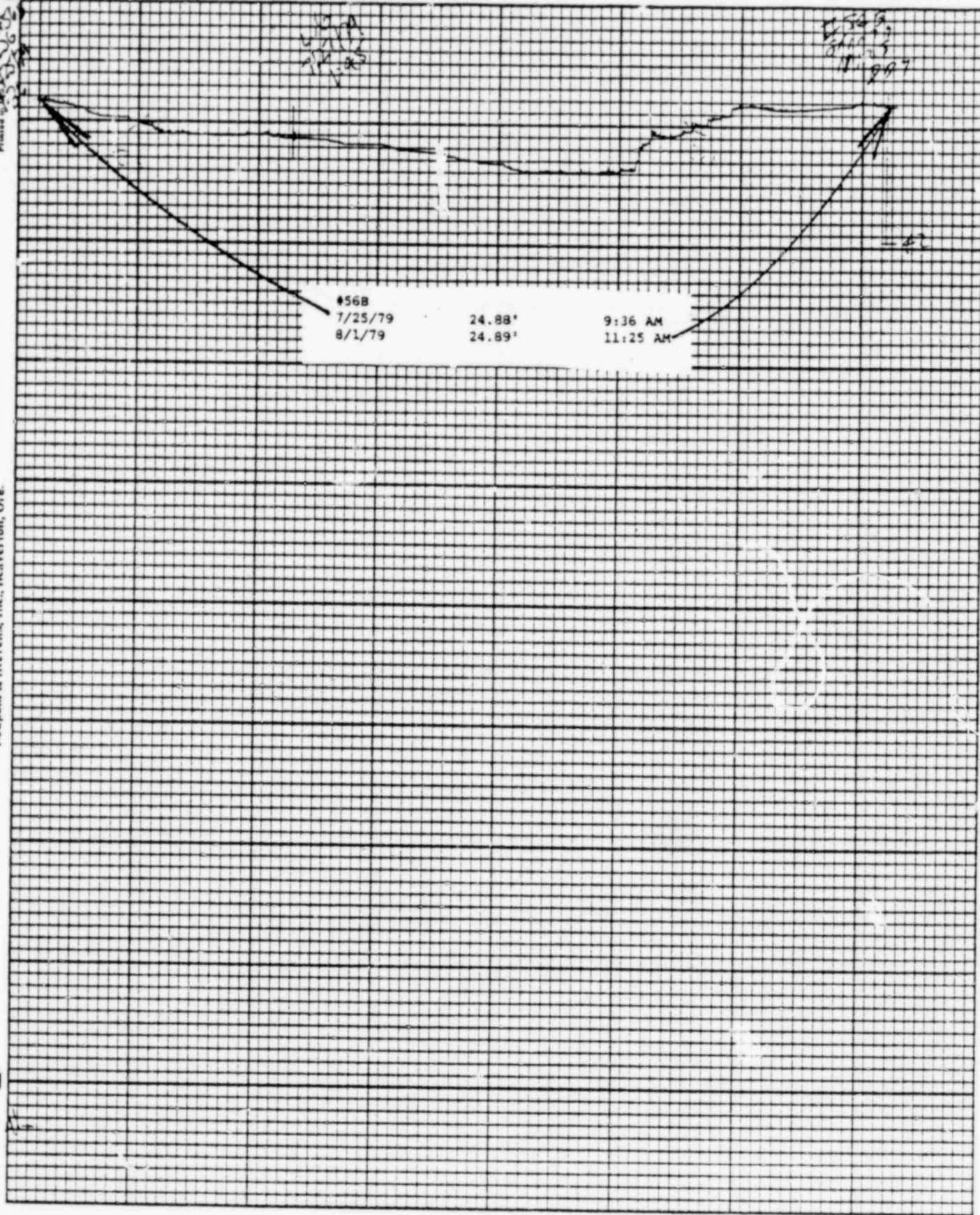
Leopold & Stevens, Inc., Beaverton, Ore.

Printed by Leopold & Stevens, Inc.

Chart P-1

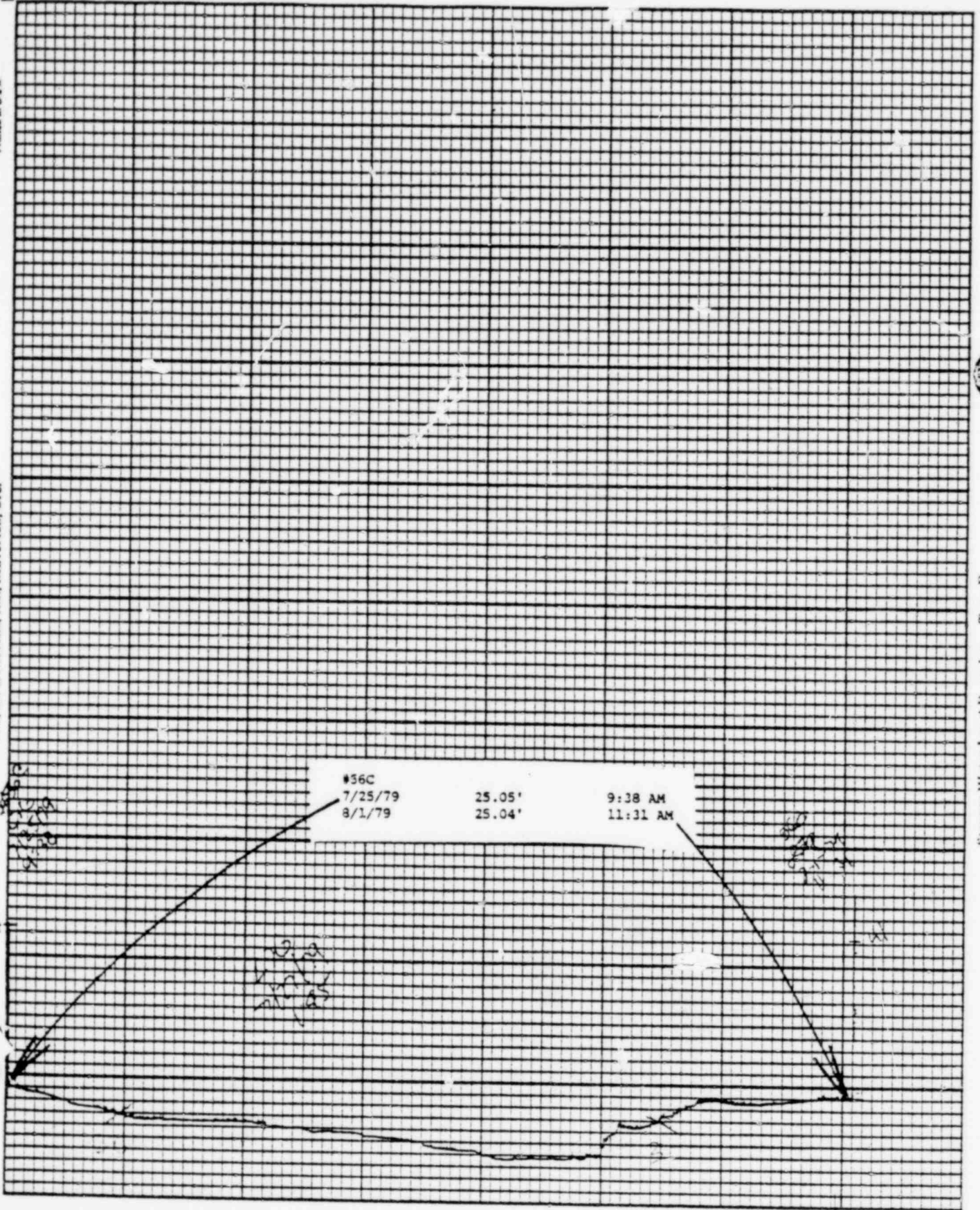
Stevens Water Level Recorder — Type F

S



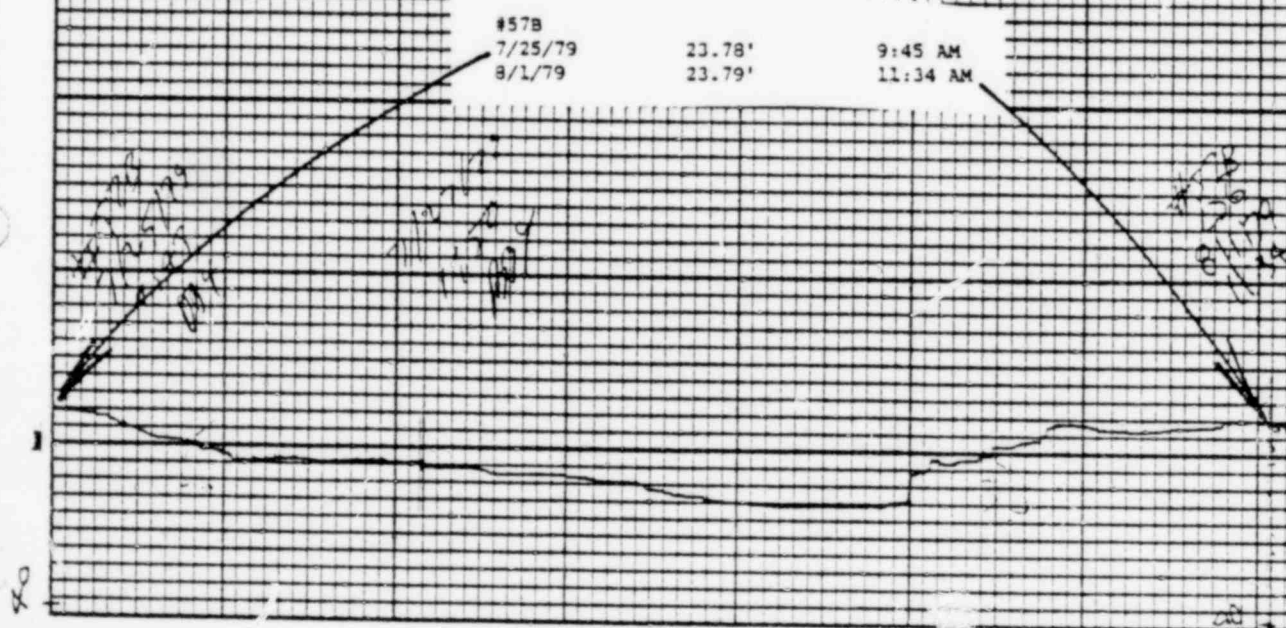
POOR ORIGINAL

847 203



POOR ORIGINAL

847 204



POOR ORIGINAL

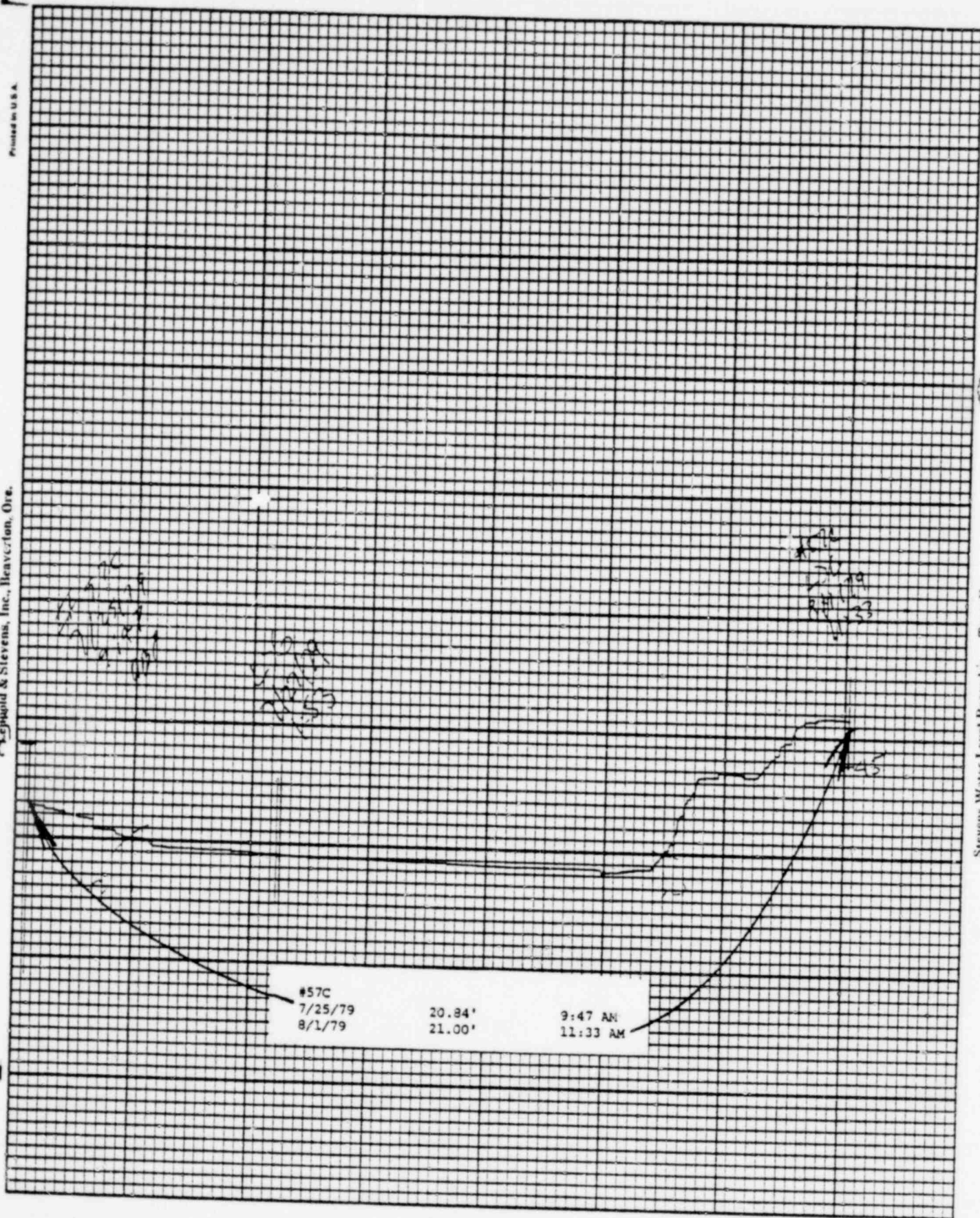
847 205

Printed in U.S.A.

Chart P.

Reggould & Stevens, Inc., Beaverton, Ore.

Stevens Water Level Recorder — Type R



POOR ORIGINAL

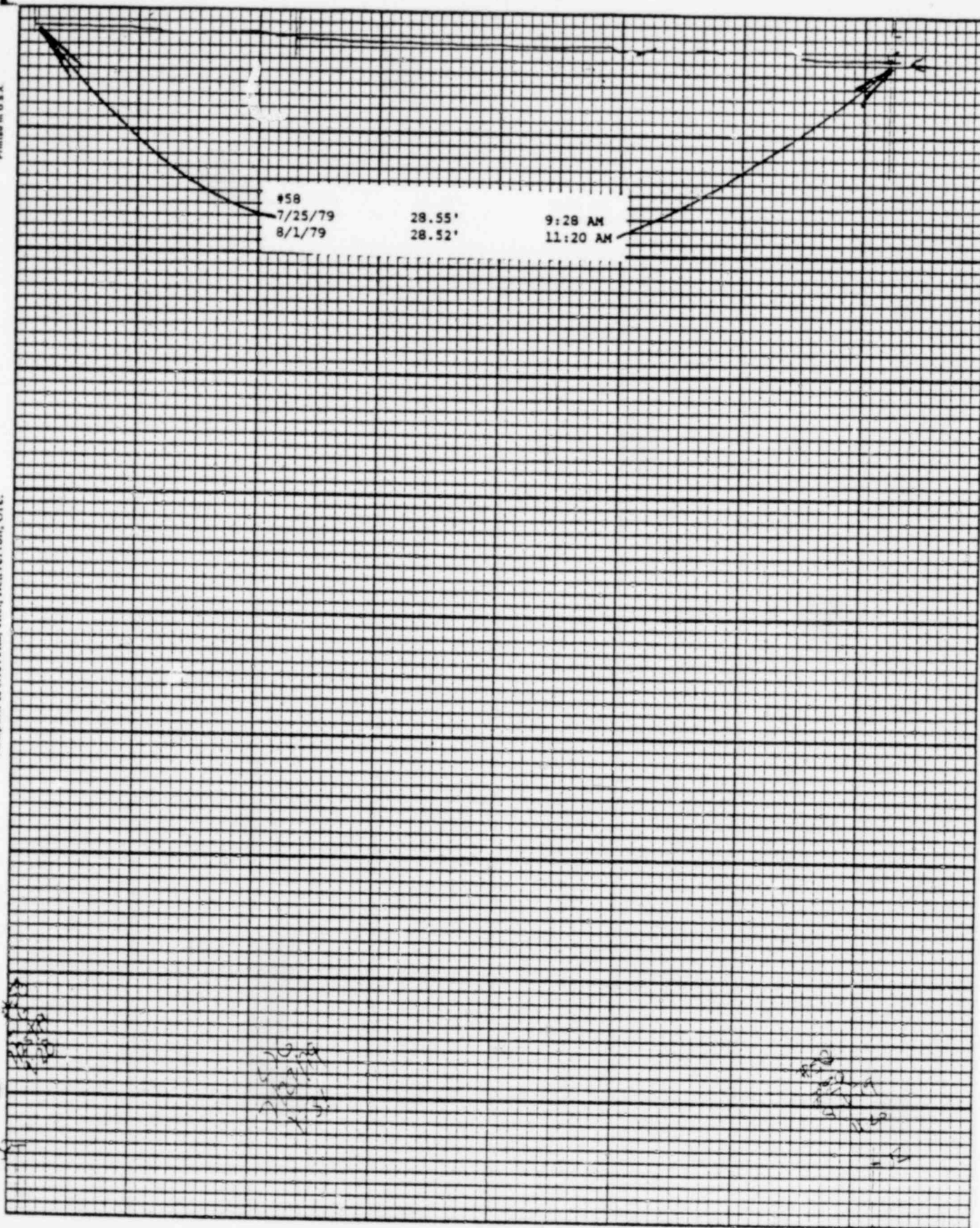
847 206

Printed in U.S.A.

Leupold & Stevens, Inc., Beaverton, Ore.

Chart F-1

Stevens Water Level Recorder — Type F

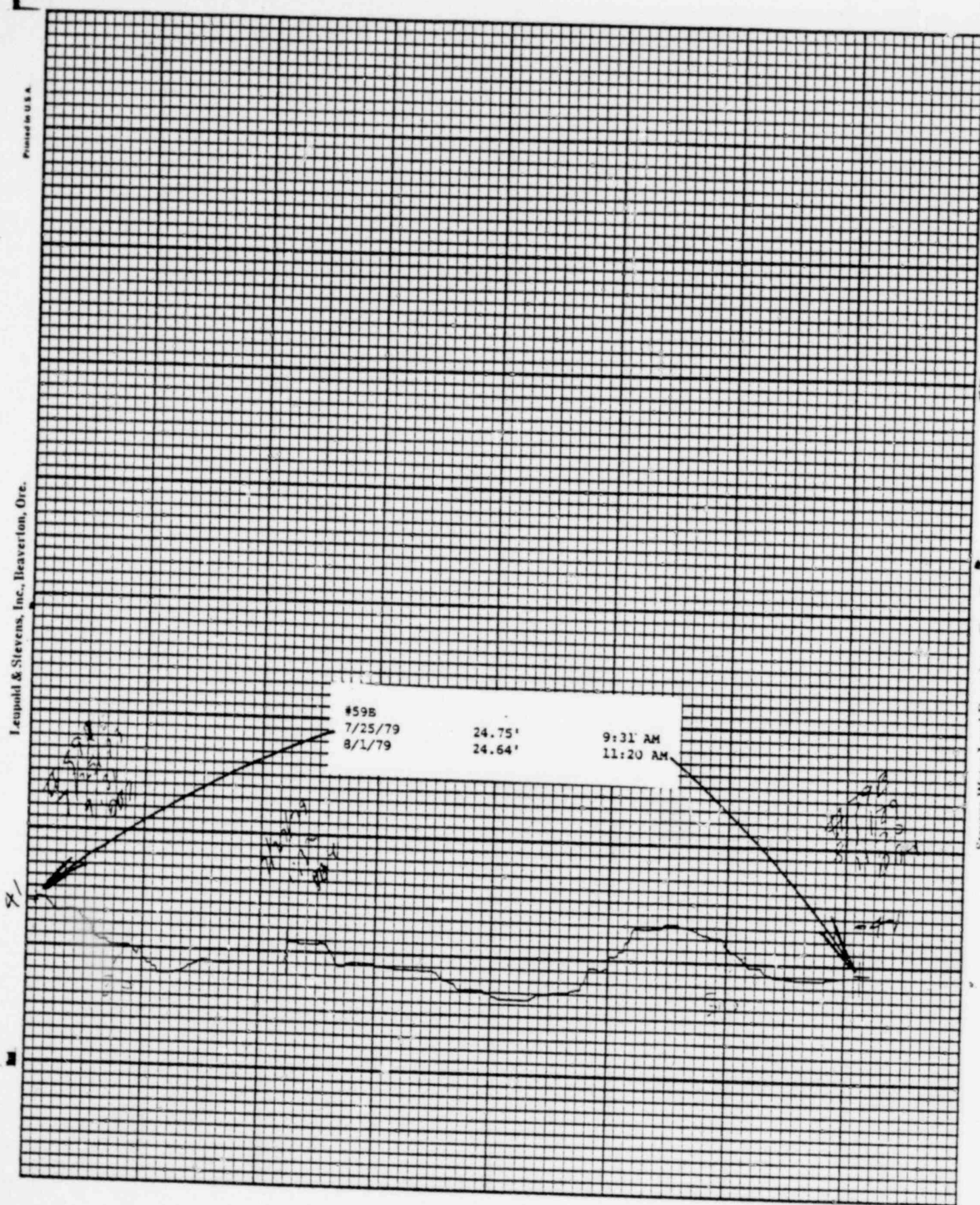


POOR ORIGINAL

847 207

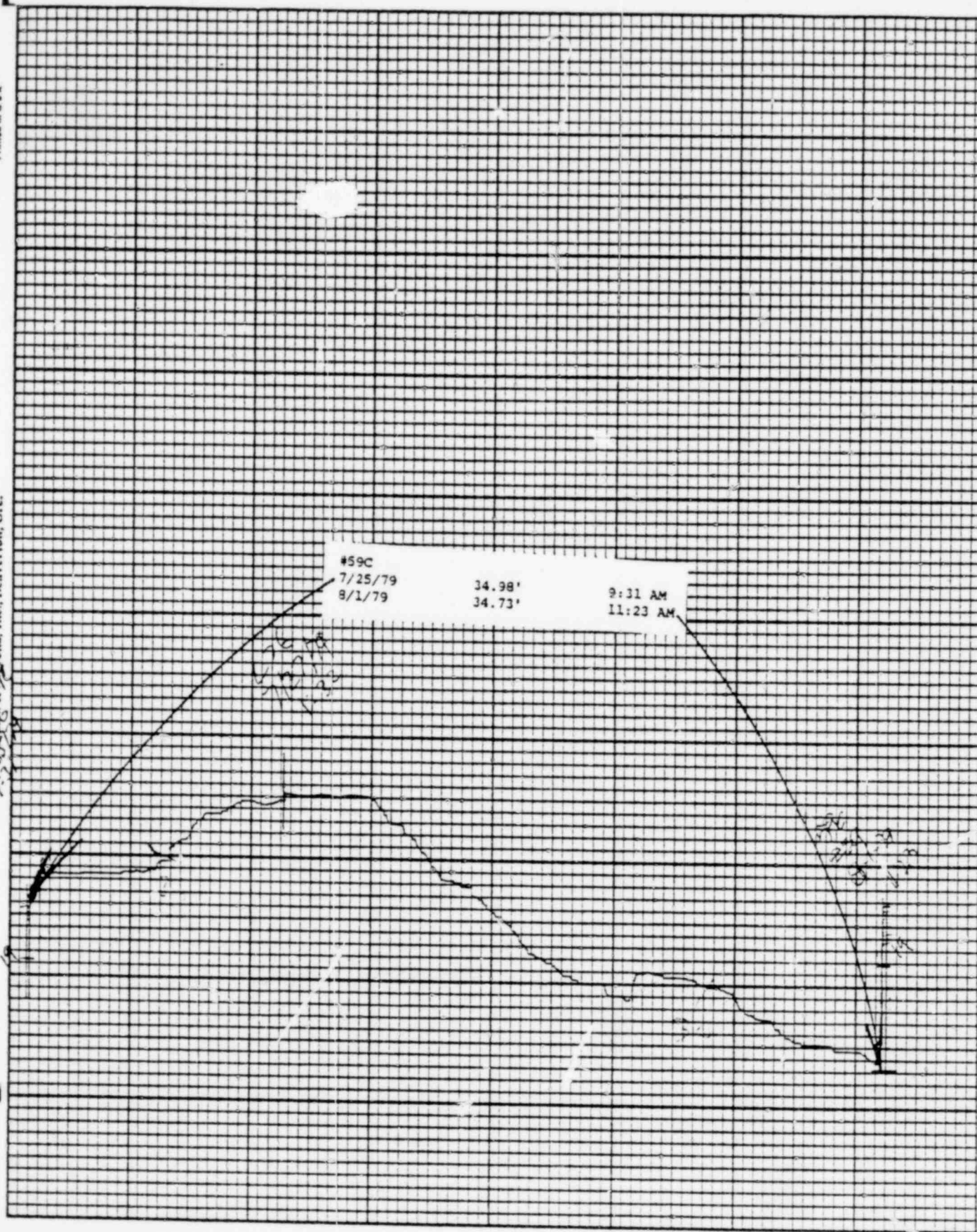
Leupold & Stevens, Inc., Beaverlton, Ore.

Stevens Water Level Recorder — Type F



POOR ORIGINAL

847 208



POOR ORIGINAL

847 209

BAILLY WELLS WITHOUT RECORDERS

8/1/79

<u>WELL #</u>	<u>WATER ELEVATION IN FEET</u>
62	32.77
65	28.04
67	23.42
72	10.84
73	11.24
74	14.59

DBY:bd

847 210

POND LEVELS

<u>POND</u>	<u>8/1/79</u>
1	28.99' *
2	30.50' *
3	28.96'
4	23.62' *
5	23.54'
6	33.31' *
7	Inaccessible
8	DRY
9	28.44'
10	39.65'
11	39.92'
12	37.01' *
13	32.74'

*Measured on 8/2/79

DBY:bd

847 211

PNEUMATIC PRESSURE TRANSDUCERS

8/2/79

<u>TRANSDUCER</u>	<u>WATER ELEVATION IN FEET</u>
P-1	11.6
P-2	9.3
P-3	8.5
P-4	14.6
P-5	14.0
P-6	15.7

DBY:bd

847 212

WATER METER READINGS

<u>DATE</u>	<u>TIME</u>	<u>METER READING (GALLONS)</u>	<u>INSTANTANEOUS FLOW RATE (GPM)</u>
-------------	-------------	--	--

Sump Pump Discharge

8/1/79	2:58PM	285,541,000	233
--------	--------	-------------	-----

Well Point Discharge

SYSTEM NOT IN USE

DBY:bd

847 213

USGS WELLS
(ELEVATION IN FEET ABOVE STATION DATUM)

8/2/79

<u>WELL</u>	<u>WATER LEVEL</u>
19	25.02
20	NOT IN SERVICE
21	30.19
22	29.98
23	29.79
101	22.89
D-1	27.28
D-2	23.93
D-3	30.35
G-1	36.18
G-2	33.13
G-3	33.92
G-4	32.10
G-5	34.53
G-6	30.86

DBY:bd

847 214