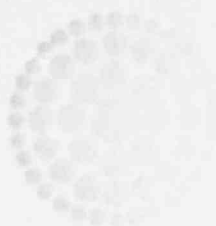


TTC



**Florida
Power**
CORPORATION

July 25, 1979

File: 3-0-3-a-3

JUL 27 AM 10:37

Mr. J. P. O'Reilly
Director
U.S. Nuclear Regulatory Commission
Office of Inspection & Enforcement
Suite 3100
101 Marietta Street
Atlanta, GA 30303

Subject: Crystal River Unit 3
Docket No. 50-302
Operating License No. DPR-72
IE Bulletin No. 79-13

Dear Mr. O'Reilly:

Enclosed please find our response to Item 6 of IE Bulletin No. 79-13. This response describes the results of the feedwater weld examinations performed at Crystal River Unit 3 at the request of your office.

Should you have any questions, please contact this office.

Very truly yours,

FLORIDA POWER CORPORATION

W. P. Stewart

W. P. Stewart
Manager
Nuclear Operations

ECSekcT02(D71)

494 158

7908150709

790458

RESULTS OF FEEDWATER WELD EXAMINATIONS
REQUESTED BY NRC REGIONAL OFFICE
PRECEDING IE BULLETIN NO. 79-13

Nine(9) Feedwater Piping Welds (including welds on one 3" riser) and seven (7) Emergency Feedwater Piping Welds (including one 3" riser) were examined by radiography. Attached is a table outlining the results of these examinations. The indications listed in the attached tables for the Main Feedwater and Emergency Feedwater systems are defined as follows:

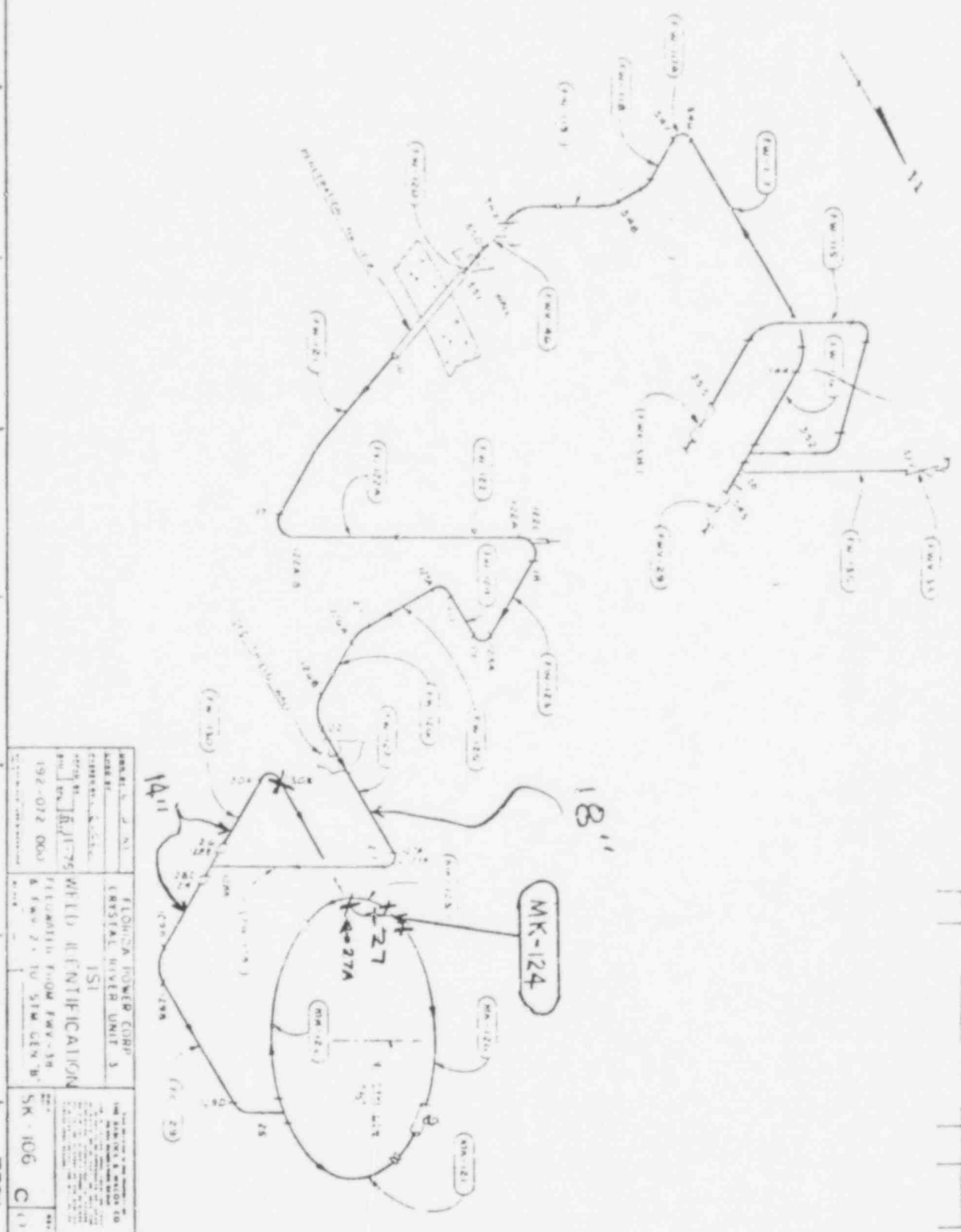
Recordable Indications are all discontinuities detected in the examination area recorded during the radiographic examination.

Reportable Indications are all discontinuities which exceed in size, shape, or number the amount allowed by ASME Section XI or the applicable original fabrication code.

No service-related indications were found. Fabrication defects were found at Weld No. FW-MK 124 to 125, FW-MK 132 to 133, and FW-130 Seam B. As per our agreements with Mr. N. Economos of your staff, we will examine these welds during two subsequent ISI inspections.

MAIN FEEDWATER, OTSG-B

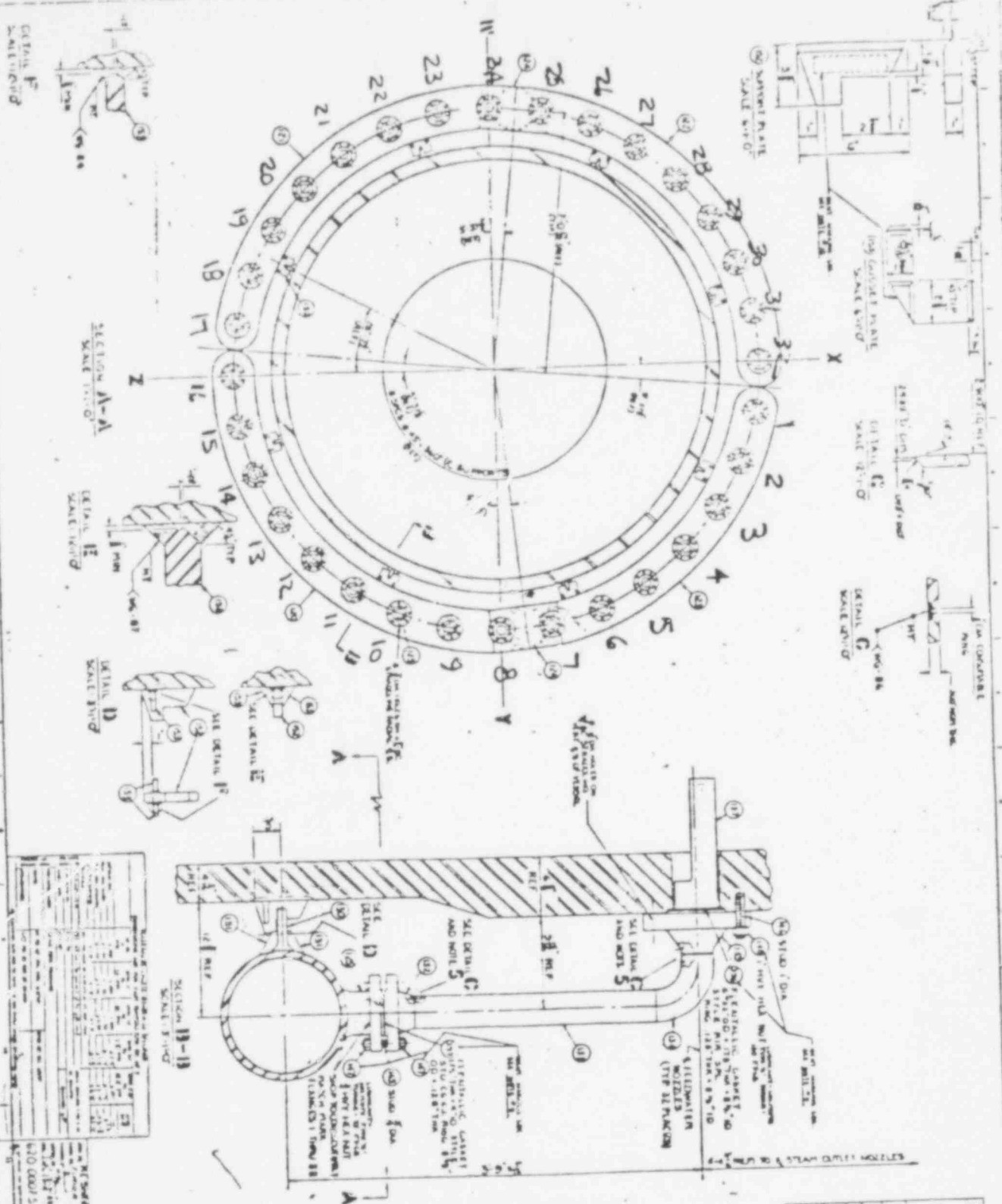
<u>Weld Number</u>	<u>Description</u>	<u>ISO</u>	<u>Size</u>	<u>Indications</u>
FW-130B	Ell to Pipe	SK-106C	14" Sch 80	1 - Reportable (Fabrication Defects)
FW-27A	Pipe to Ell	SK-106C	14" Sch 80	1 - Recordable
FW-27	Ell to Tee	SK-106C	14" Sch 80	2 - Recordable
MK-124 to MK-123	Toe to Header	B&W 134922	14" Sch 80	2 - Recordable
MK-124 to MK-120	Toe to Header	B&W 134924	14" Sch 80	No - Reportable
MK-124 to MK-125	Toe to 3" lg. Weld Neck Flange	B&W 134924	14" Sch 80 to 3" Flange	2 - Recordable (Fabrication Defects)
MK-132 to MK-133	Flange to Pipe	B&W 134924	3" Sch 80	3 - Reportable 1 - Recordable (Fabrication Defects)
MK-133 to MK-134	Pipe to Ell	B&W 134924	3" Sch 80	1 - Recordable
MK-134 to MK-135	Ell to Flange	B&W 134924	3" Sch 80	3 - Recordable



APPROVED BY: [Signature]	FLORIDA POWER CORP.	THE STATE OF FLORIDA
DATE: 10/11/75	CRYSTAL RIVER UNIT 3	DESIGNED BY: [Signature]
PROJECT NO. 100-11-75	ISI	CHECKED BY: [Signature]
192-072 (DO)	WELDED METALLURGICAL	APPROVED BY: [Signature]
	RECOMMENDED FOR FV-10	
	BY FV-2 TO STATION B	
	BY FV-2	
	SK-106 C (1)	

Main Feedwater

POOR ORIGINAL



Main Fuel/Water

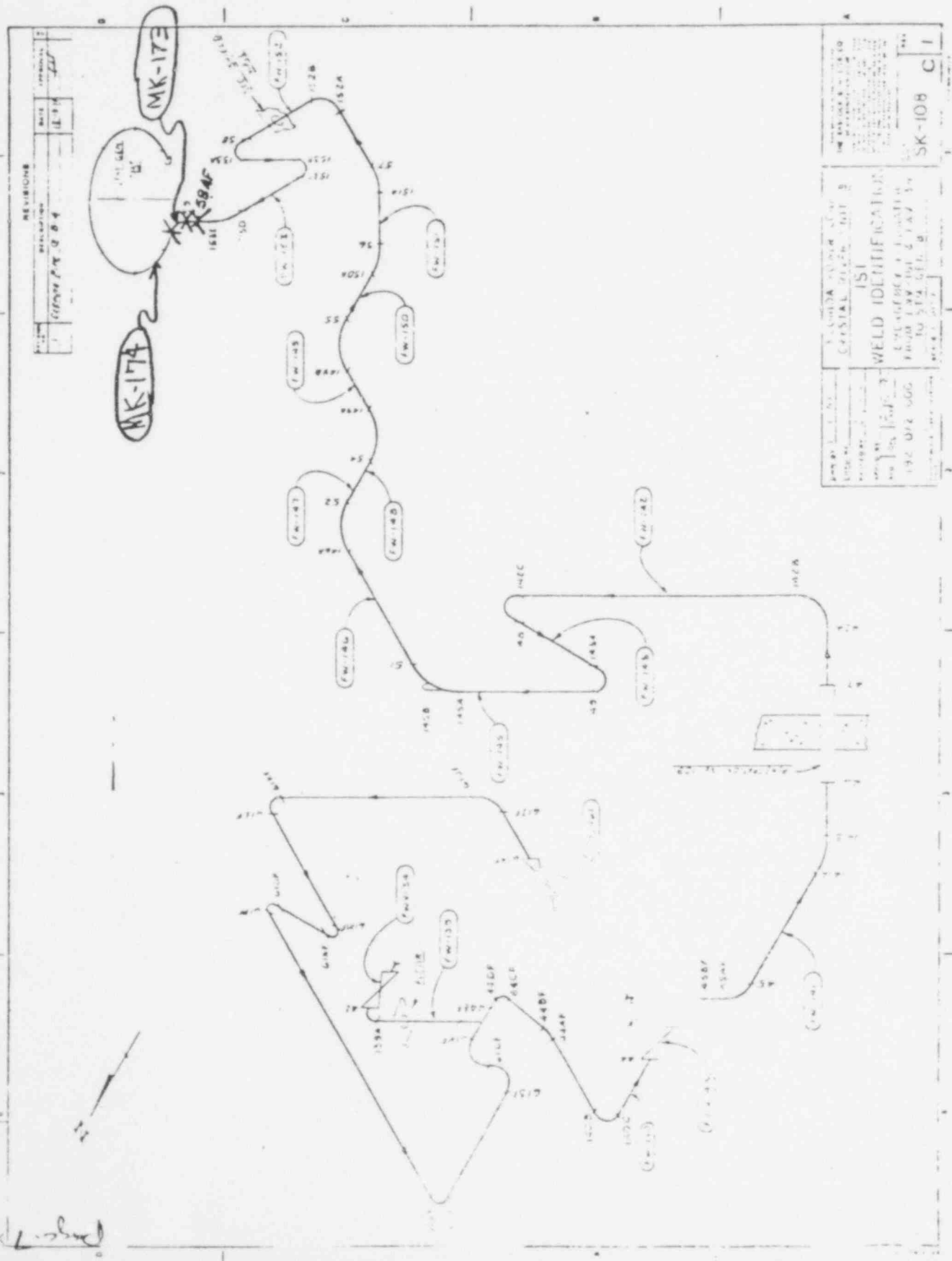
POOR ORIGINAL

EMERGENCY FEEDWATER, OTSG-B

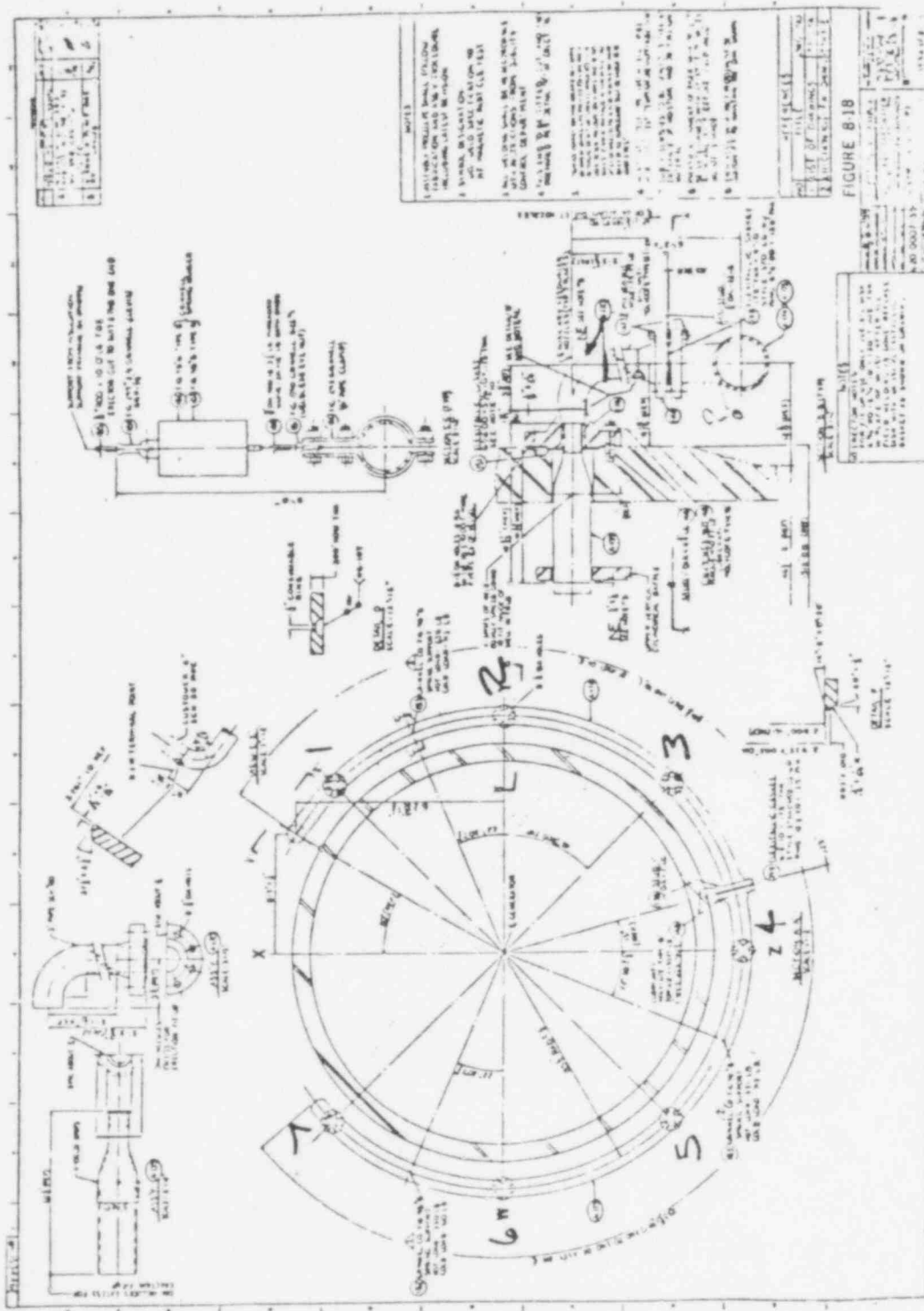
<u>Weld Number</u>	<u>Description</u>	<u>ISO</u>	<u>Size</u>	<u>Indications</u>
EF-58AF	Pipe to Pipe	SK-108C	6" Sch 80	3 - Recordable
EF-59	Pipe to Ell	SK-108C	6" Sch 80	5 - Recordable
MK-173 to MK-A174	Ell to Header	SK-108C	6" Sch 80	3 - Recordable
MK-A174 to MK-179	Flange to Header	B&W 153446	6" Sch 80 3" Weld Neck	No - Recordable
MK-132 to MK-338	Flange to Pipe	B&W 153446	3" Sch 80	3 - Recordable
MK-338 to MK-134	Pipe to Ell	B&W 153446	3" Sch 80	No - Recordable
MK-134 to MK-138	Ell to Flange	B&W 153446	3" Sch 80	3 - Recordable

POOR ORIGINAL

Aus Feedwater



POOR ORIGINAL



Asx Feedwater (EF)

B:W DWG # 153446

FIGURE B-18