



Northern Indiana Public Service Company

Nuclear Staff
RR # 3, Box 501
Chesterton, IN 46304
July 27, 1979

BAILLY GENERATING STATION N-1

Mr. Ronald Ballard
Environmental Projects Branch No.1
Directorate of Licensing
U.S. Nuclear Regulatory Commission
Washington, D.C. 20545

RE: NORTHERN INDIANA PUBLIC SERVICE COMPANY
BAILLY GENERATING STATION NUCLEAR 1
DOCKET 50-367

Dear Mr. Ballard:

Enclosed herewith are ten (10) copies of the following:

1. Well Charts for July 11, 1979 through July 18, 1979
2. Bailly Wells Without Recorders for July 18, 1979
3. Pond Levels for July 18, 1979
4. Pneumatic Pressure Transducers for July 18, 1979
5. Water Meter Readings for July 18, 1979

Sincerely,

R. J. Bohn
Manager, Nuclear Staff

ckp
DBY:lu

Enclosures

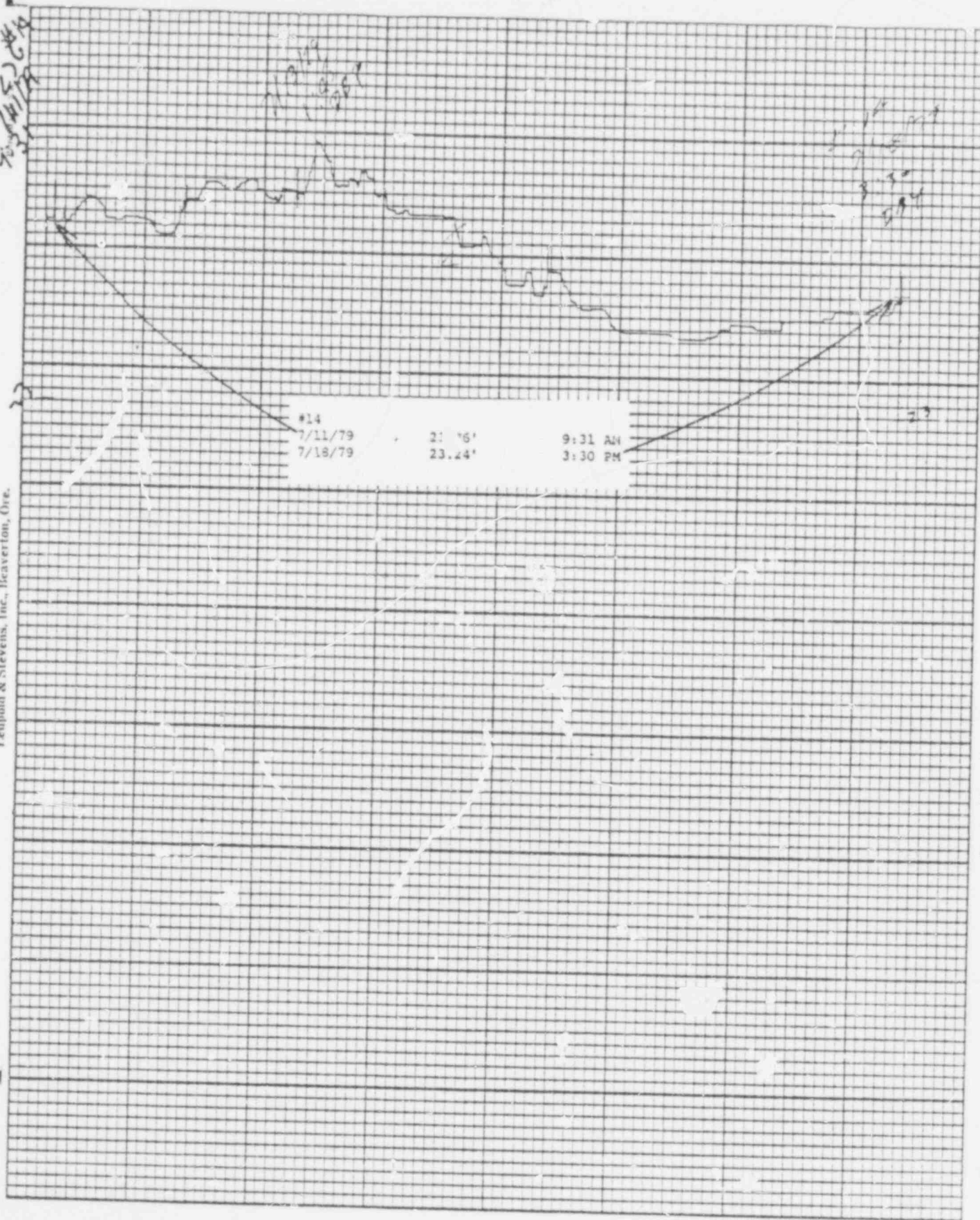
File: Ground Water Observation Monitoring Wells

*DO NOT
DELETE*

32
7908030147.

498 055

937417A



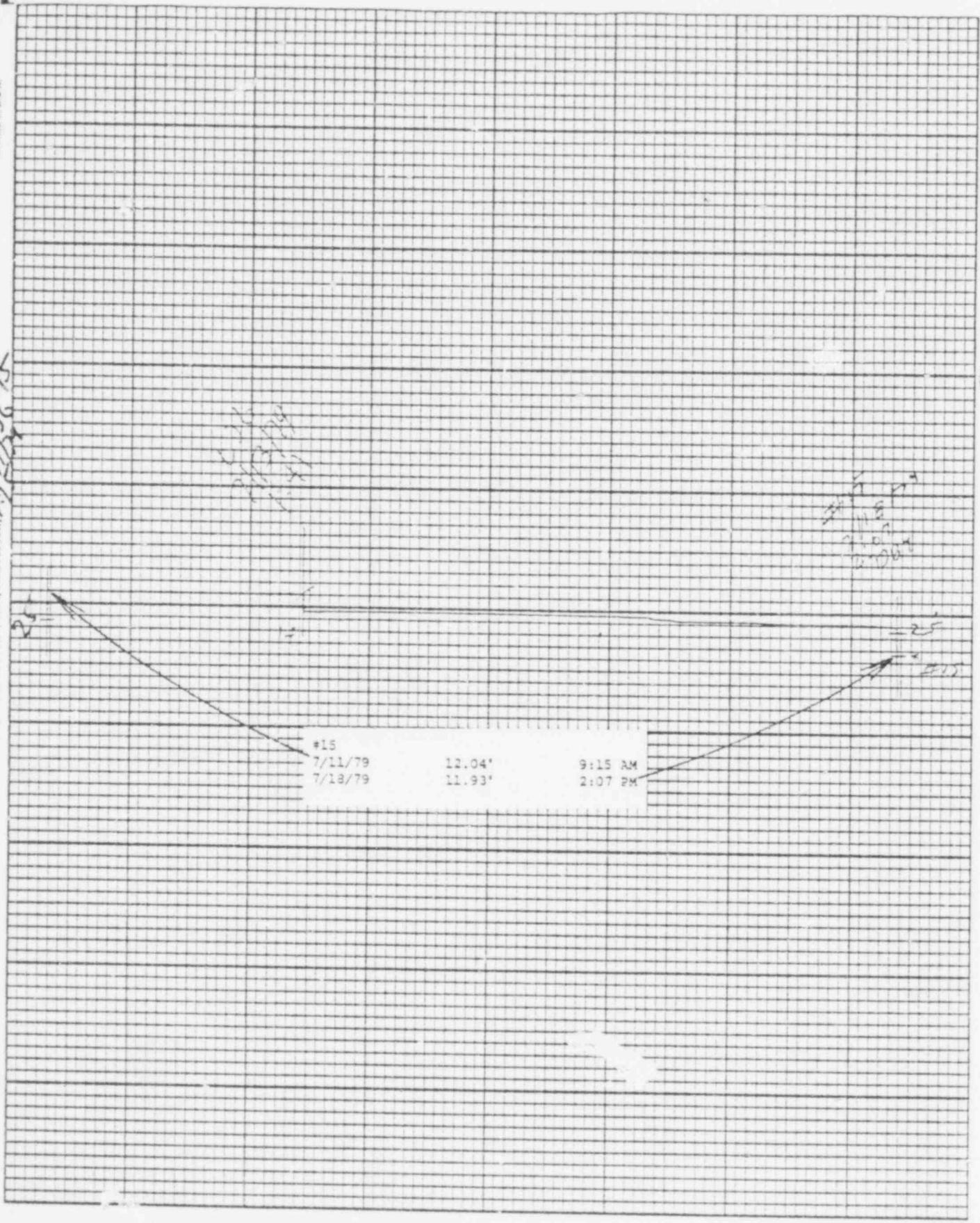
Printed in U.S.A.

Leupold & Stevens, Inc., Beaverlton, Pa. 15005

Chart F-1



Stevens Water Level Recorder — Type F



POOR ORIGINAL

498

057

8/2/79
7/11/79

7/13/79
5:30

7/13/79
5:30

#16
7/11/79
7/13/79

26.40'
26.24'

8:49 AM
2:22 PM

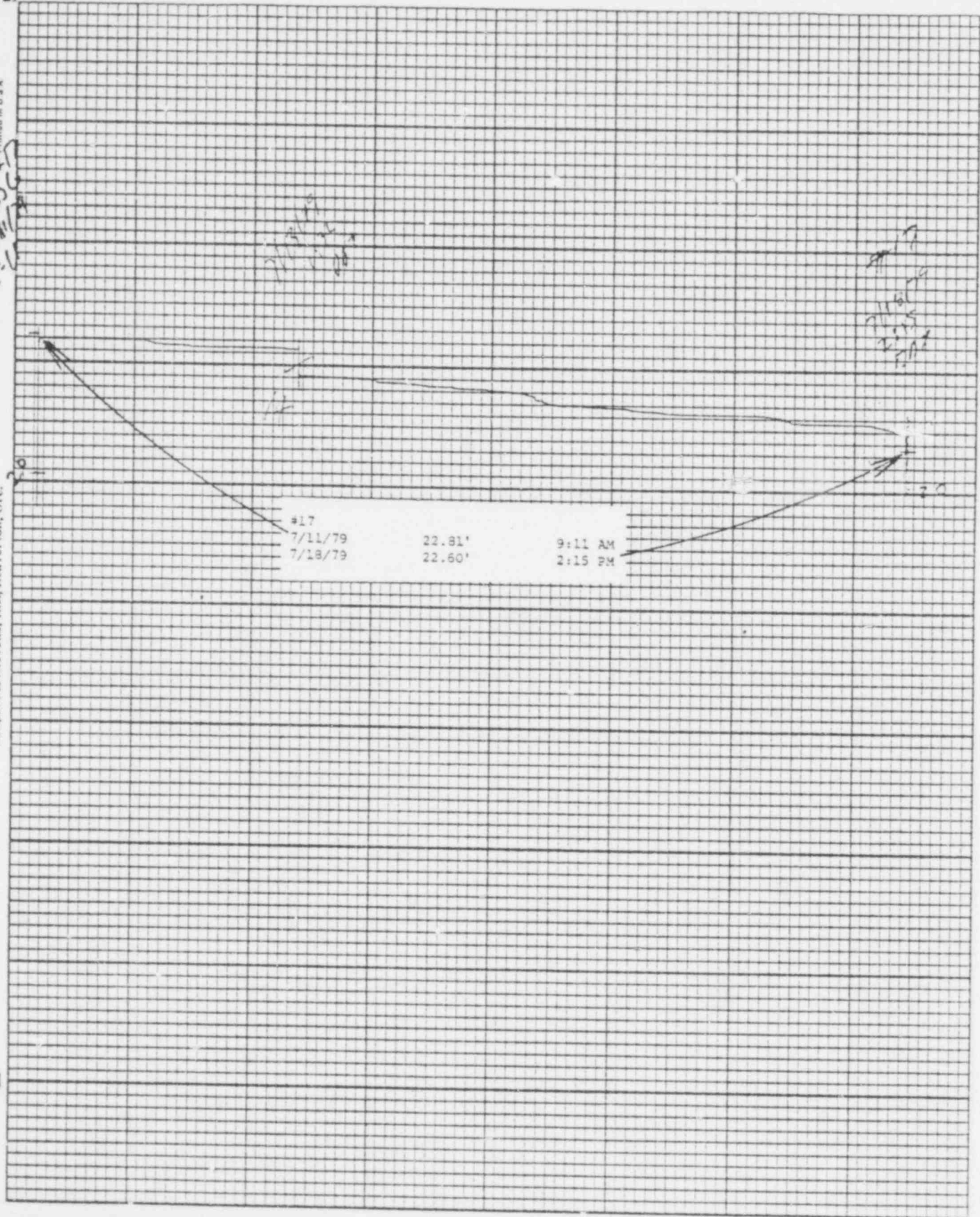
POOR ORIGINAL 498 058

Leupold & Stevens, Inc., Beaverton, Ore.

Printed in U.S.A.

Chart F-1

Stevens Water Level Recorder -- Type F



498 059

POOR ORIGINAL

Printed on U.S.A.

7/11/79
9:00 AM

Leupold & Stevens, Inc., Astoria, Ore.

Chart F-1

(S)

Stevens Water Level Recorder — Type F

#18
7/11/79 25.68' 9:00 AM
7/19/79 25.52' 2:24 PM

498 060
POOR ORIGINAL

Printed in U.S.A.

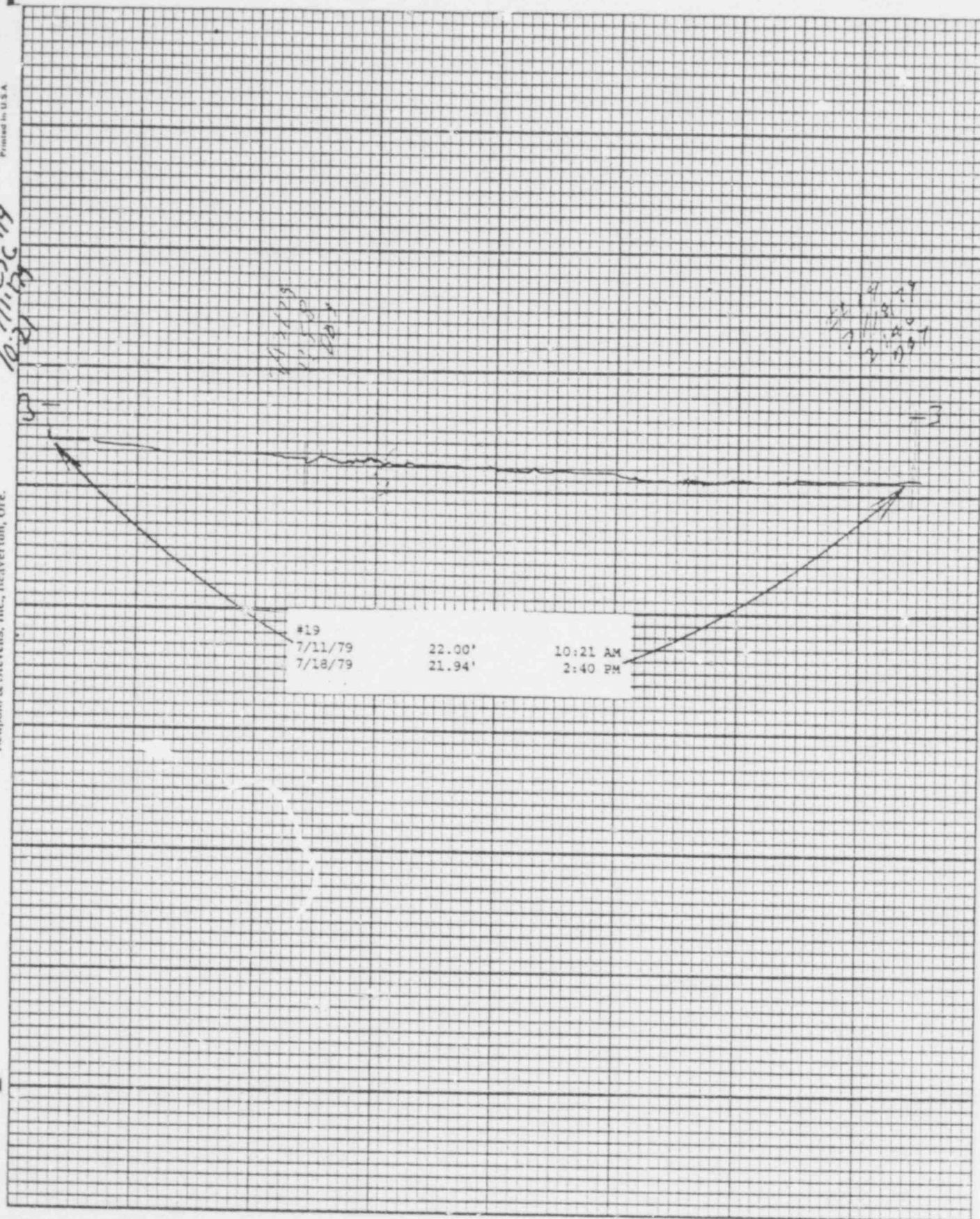
7/11/79
10:21 AM

Leupold & Stevens, Inc., Heaverton, Ore.

Chart F-1



Stevens Water Level Recorder — Type F



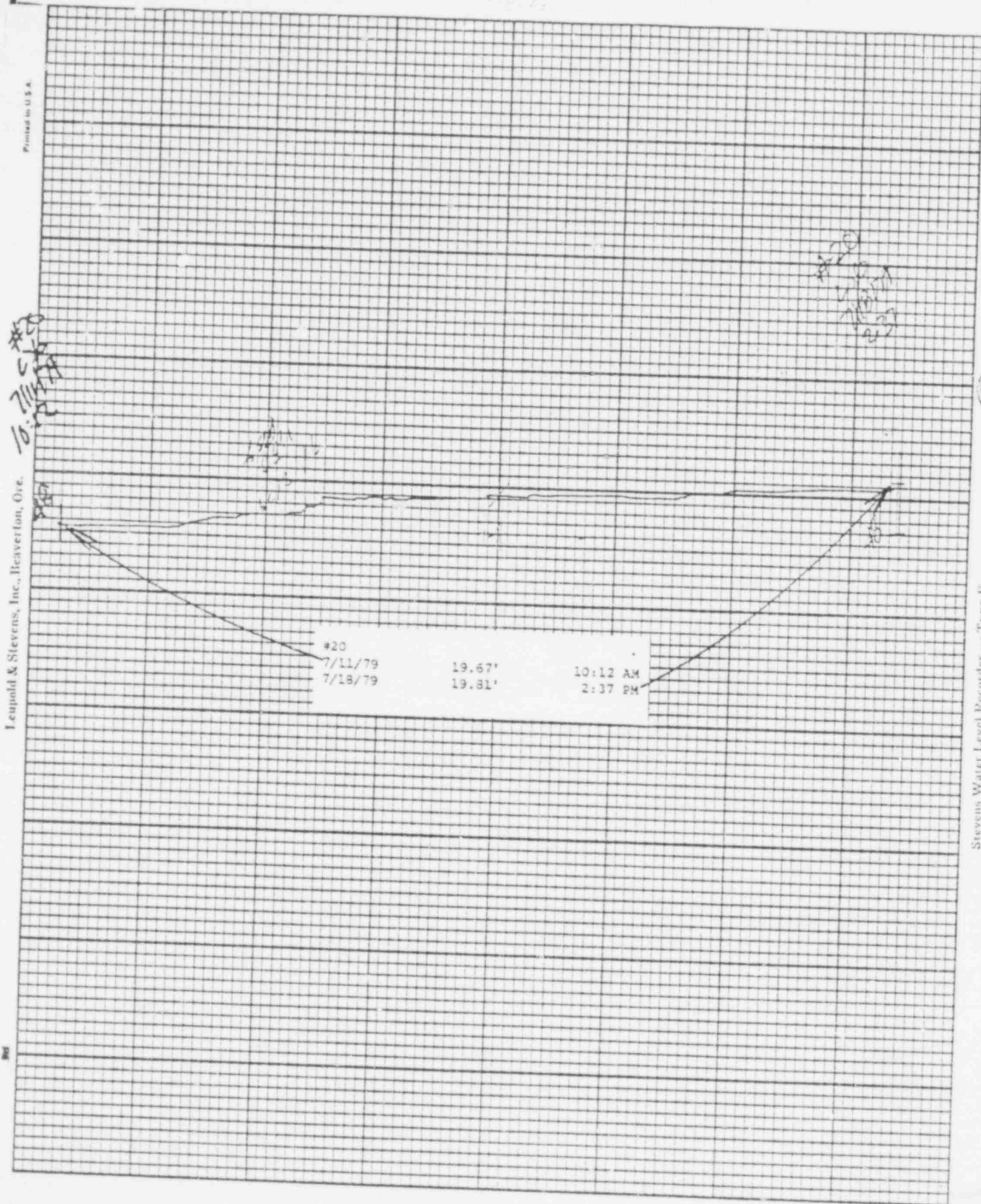
498 061

POOR ORIGINAL

Printed in U.S.A.

Leupold & Stevens, Inc., Heaverton, Ore.

Stevens Water Level Recorder — Type F



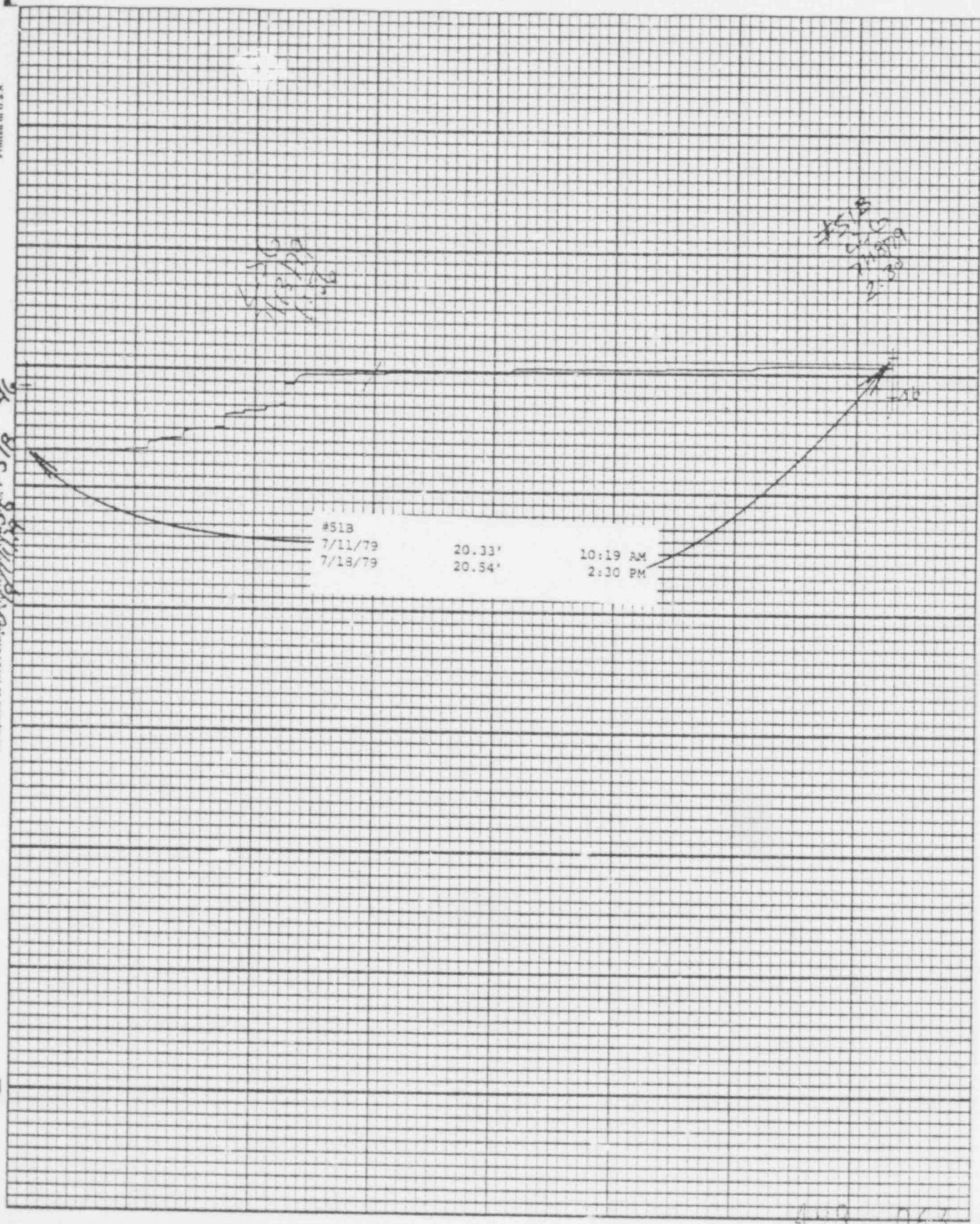
POOR ORIGINAL

498-062

Leupold & Stevens, Inc. No. 71148 518



Stevens Water Level Recorder — Type F



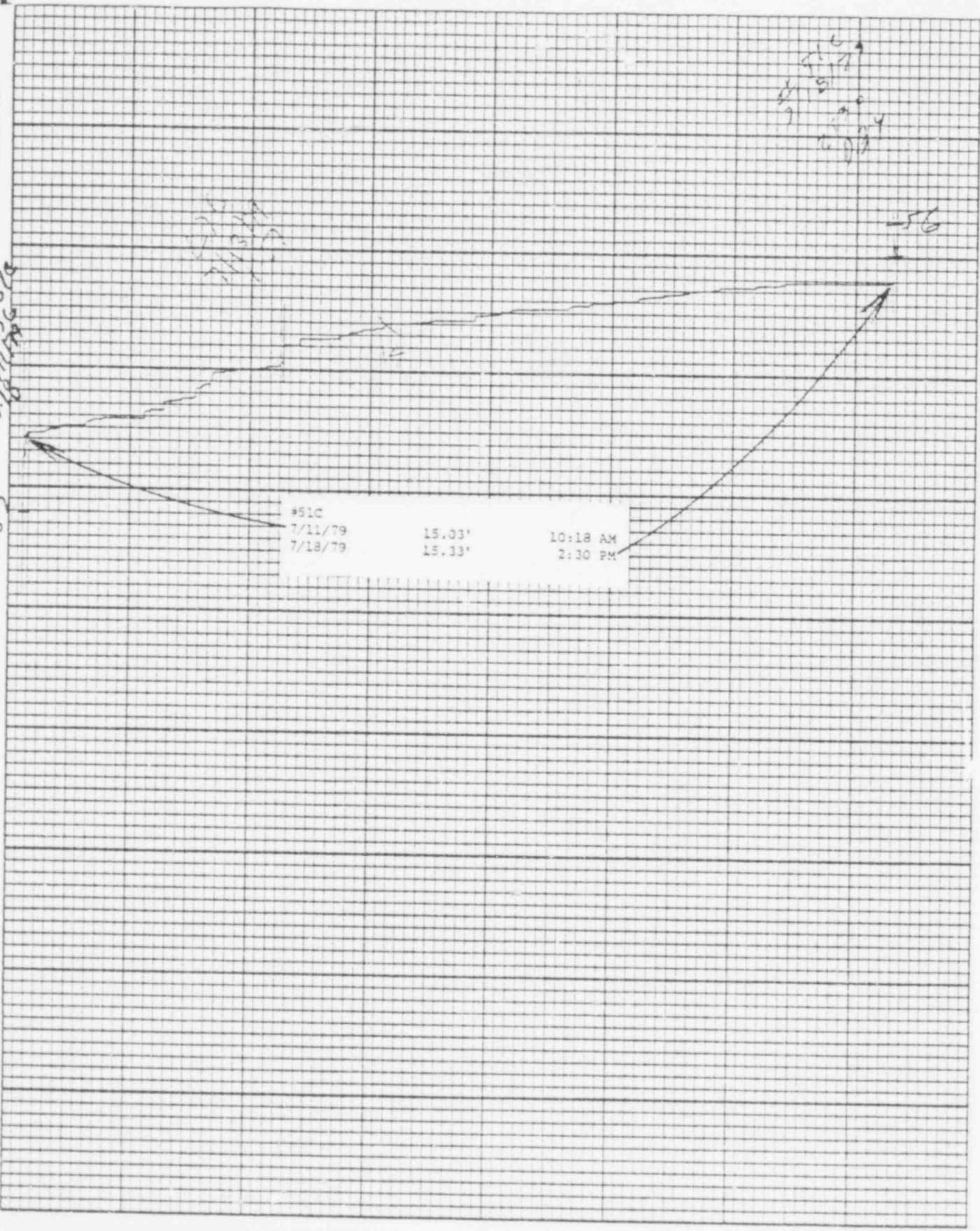
499 063

POOR ORIGINAL

Printed in U.S.A.

Leupold & Stevens, Inc., Heaverfont, Wis.

#57a
7/11/79
10:18 AM



#51C		
7/11/79	15.03'	10:18 AM
7/18/79	15.13'	2:30 PM

Stevens Water Level Recorder — Type F

(S)

Chart F-1

498-064
POOR ORIGINAL

Leupold & Stevens, Inc., Beaverlton, Ore.

Stevens Water Level Recorder — Type F

7/11/79
10:09 AM

#52A
7/11/79
7/18/79

17.93'
18.23'

10:09 AM
2:45 PM

20
22
24
26
28
30
32
34
36
38
40
42
44
46
48
50
52
54
56
58
60
62
64
66
68
70
72
74
76
78
80
82
84
86
88
90
92
94
96
98
100

25

498 066

POOR ORIGINAL

10:10 AM
7/11/79

7/11/79
17.45'

7/11/79
17.45'

53

#52B

7/11/79

17.45'

10:10 AM

7/18/79

17.81'

2:42 PM

498 066
POOR ORIGINAL

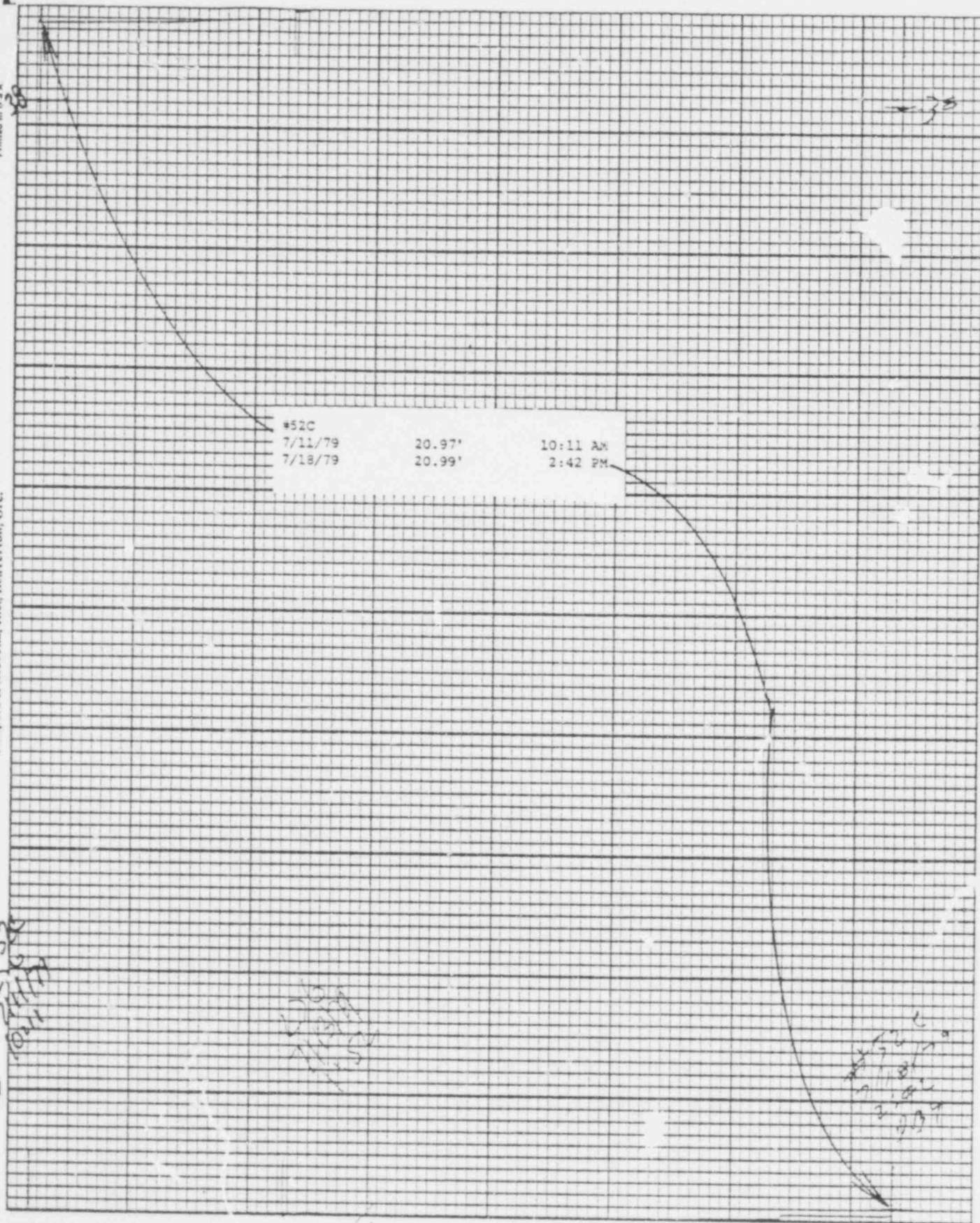
Printed in U.S.A.

Leupold & Stevens, Inc., Heaverton, Ore.

Chart F-1



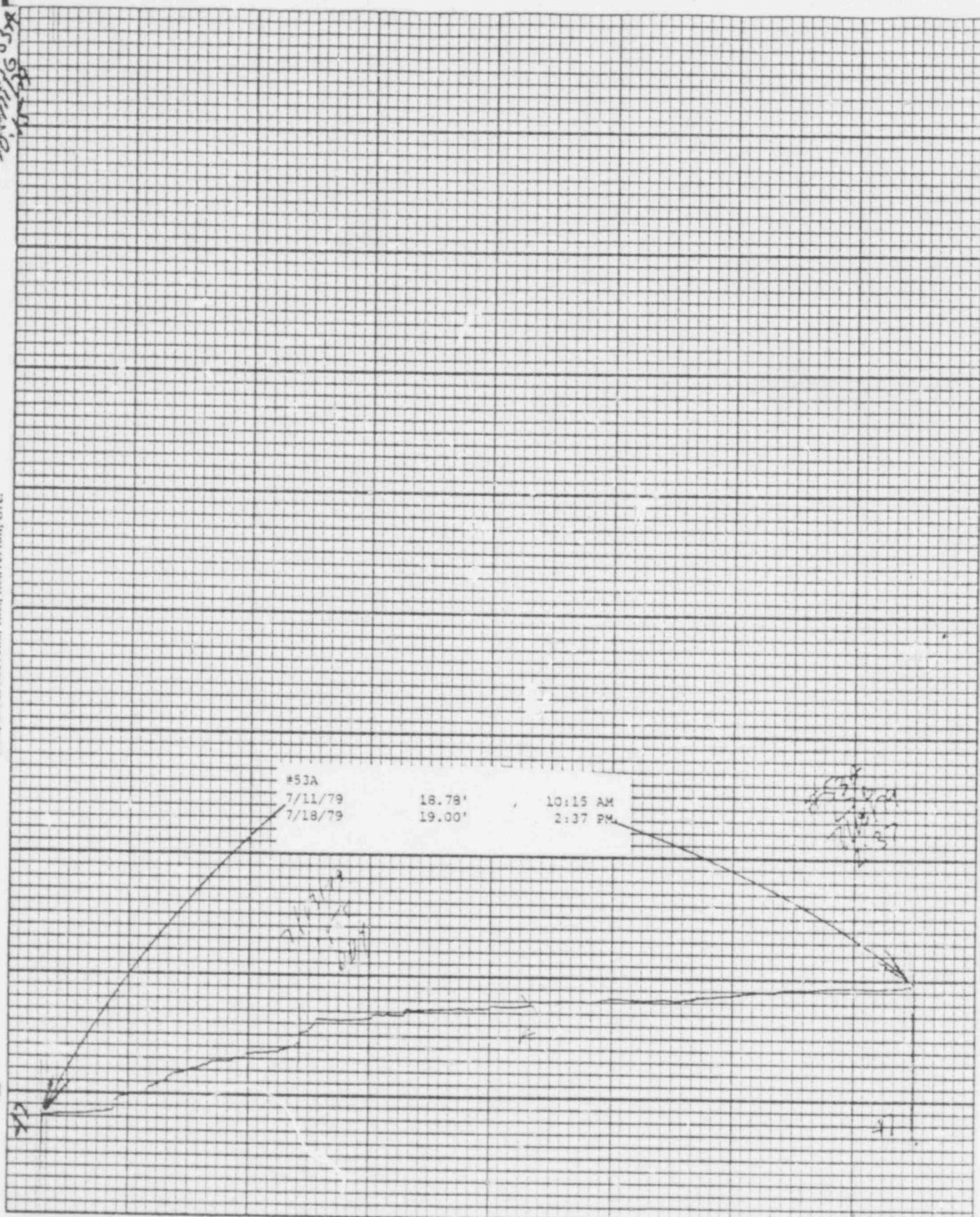
Stevens Water Level Recorder — Type F



498-067

POOR ORIGINAL

10-7-79 #53A
10-7-79



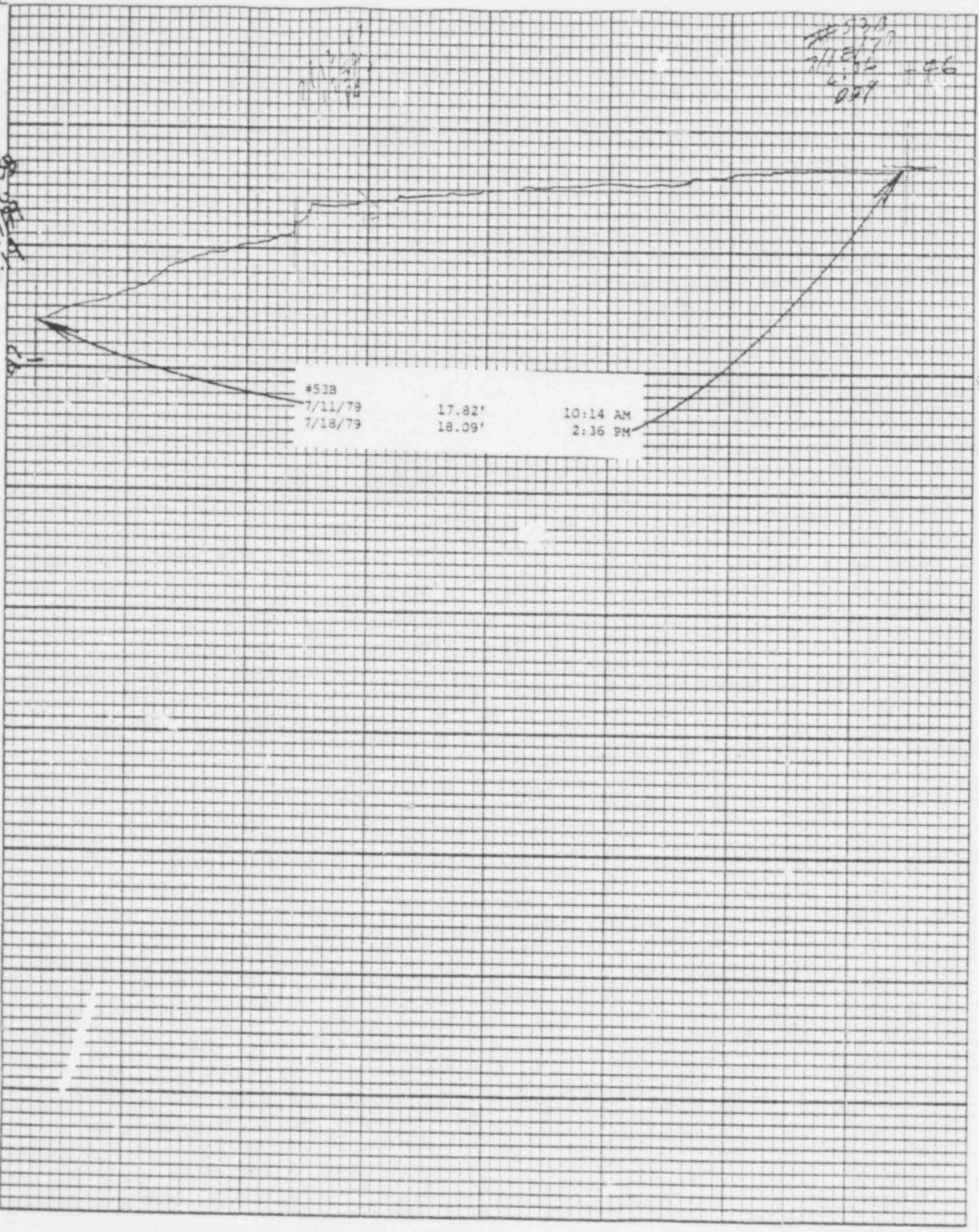
POOR ORIGINAL

Printed in U.S.A.

Leupold & Stevens, Inc., Beaver ton, Ore.

Chart F-1

Stevens Water Level Recorder — Type F



Printed in U.S.A.

Leupold & Stevens, Inc., Beaverlton, Ore.

Chart F-1



Stevens Water Level Recorder — Type F

#53C
7/11/79
10:16 AM

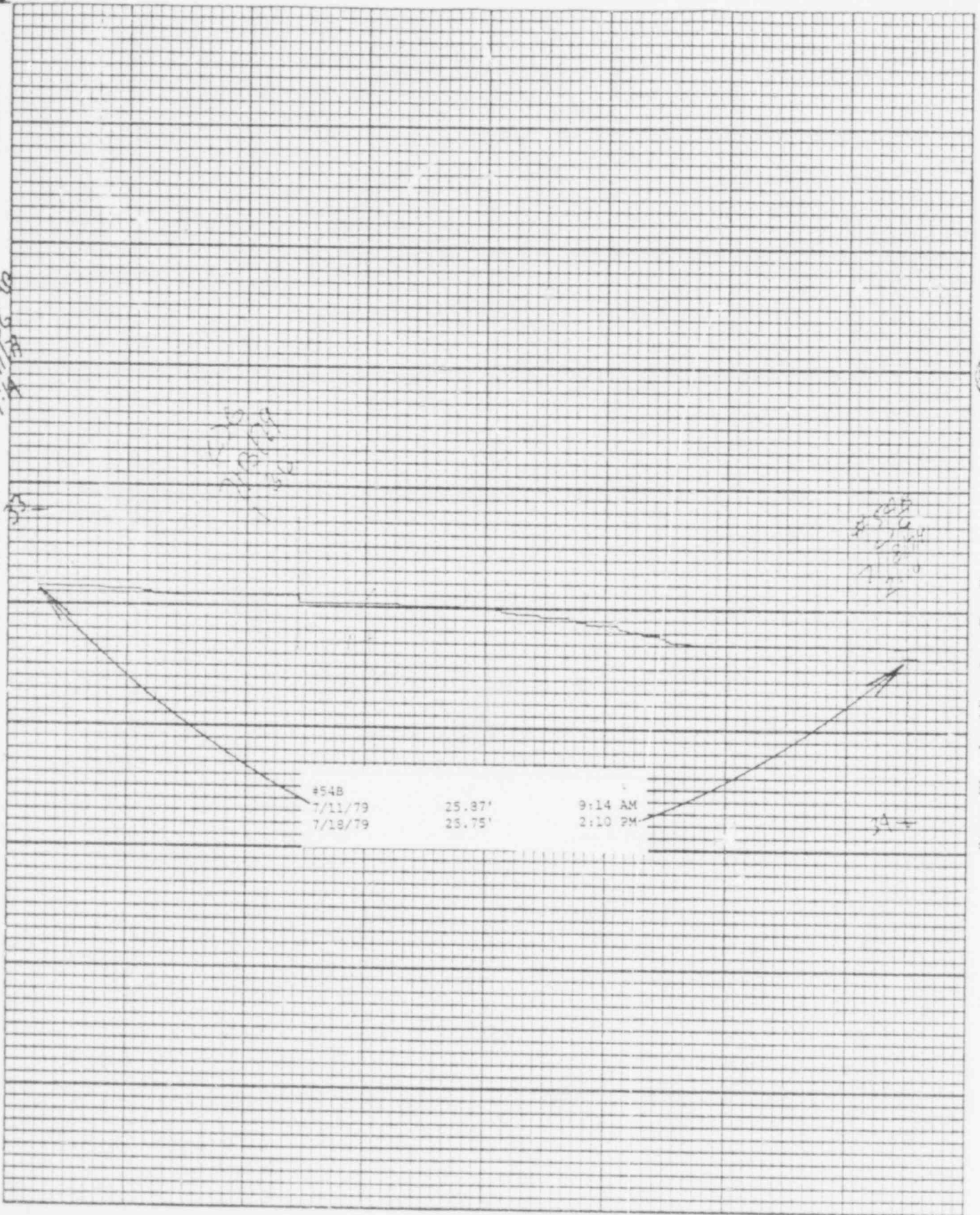
7/18/79
2:36 PM

#53C
7/18/79
2:36 PM

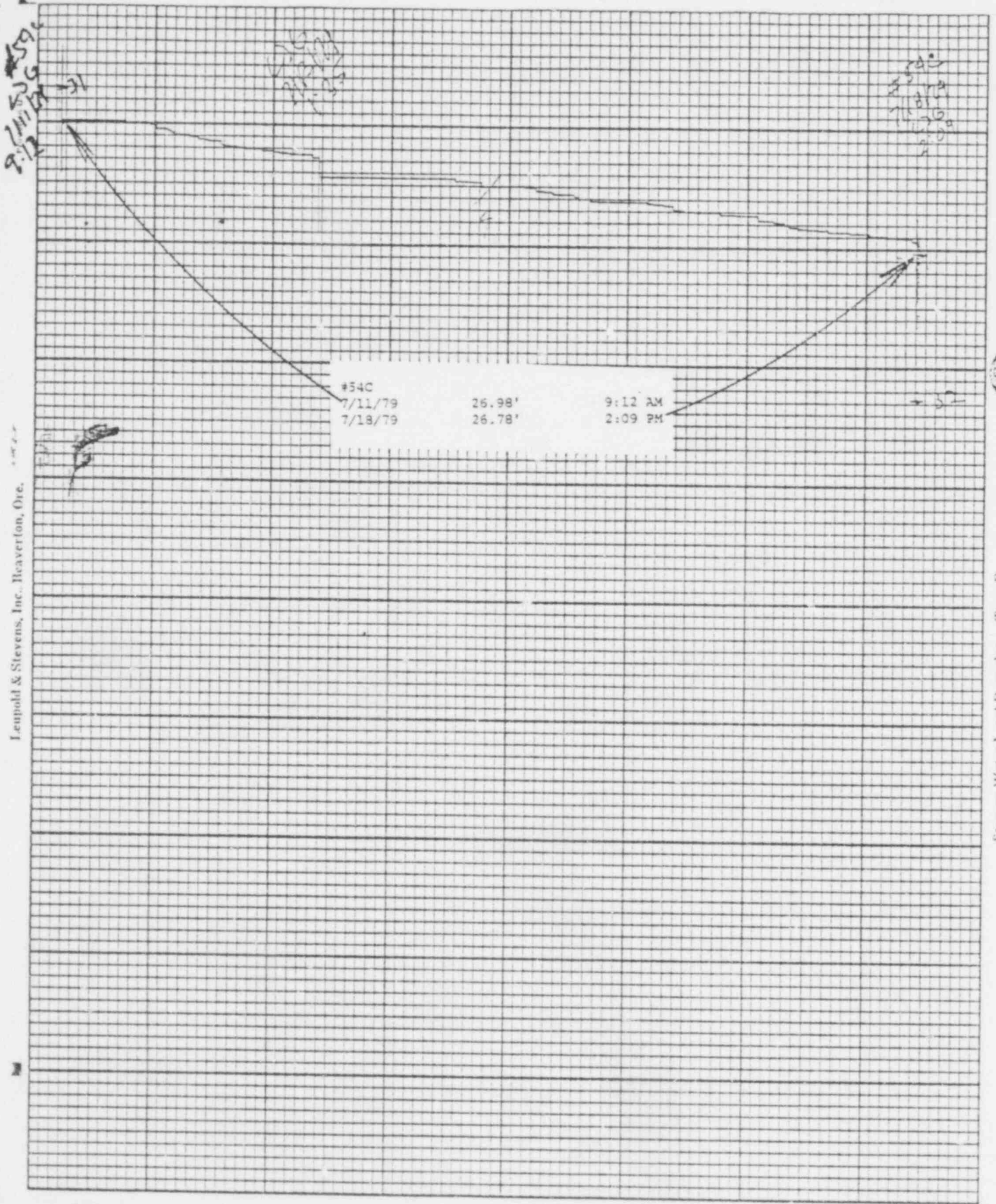
#53C		
7/11/79	18.48'	10:16 AM
7/18/79	19.74'	2:36 PM

POOR ORIGINAL

498 07D



498 071
POOR ORIGINAL



498 078

POOR ORIGINAL

#558
7/11/79
9:34 AM

CS-1
7/13/79
9:50 AM

#558
7/13/79
2:50 PM

#558		
7/11/79	18.42'	9:34 AM
7/13/79	18.58'	2:50 PM

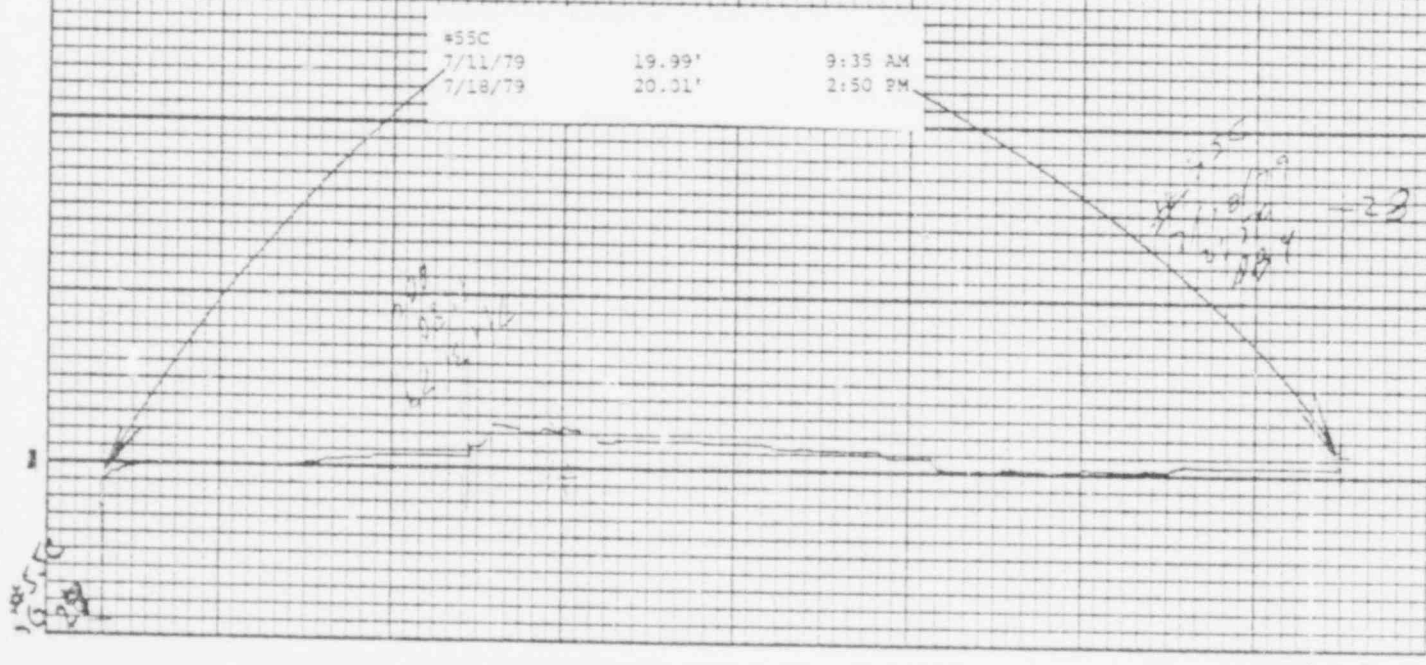
498 073
POOR ORIGINAL

Printed in U.S.A. 7/11/79

Leimold & Stevens, Inc., Beaverton, Ore.

Chart F-1

Stevens Water Level Recorder — Type F



493 074
POOR ORIGINAL

Leupold & Stevens, Inc., Beaverton, Ore.

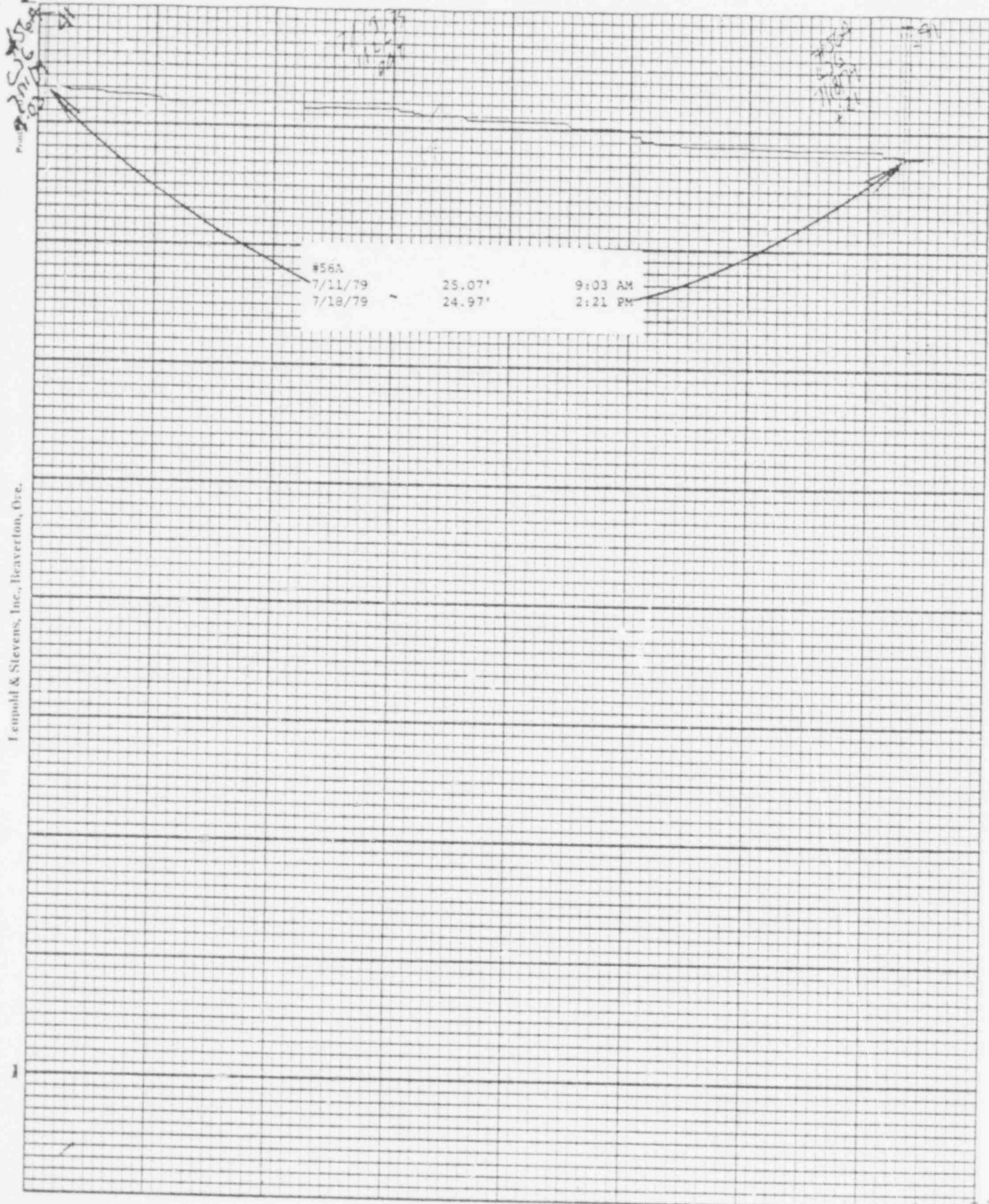


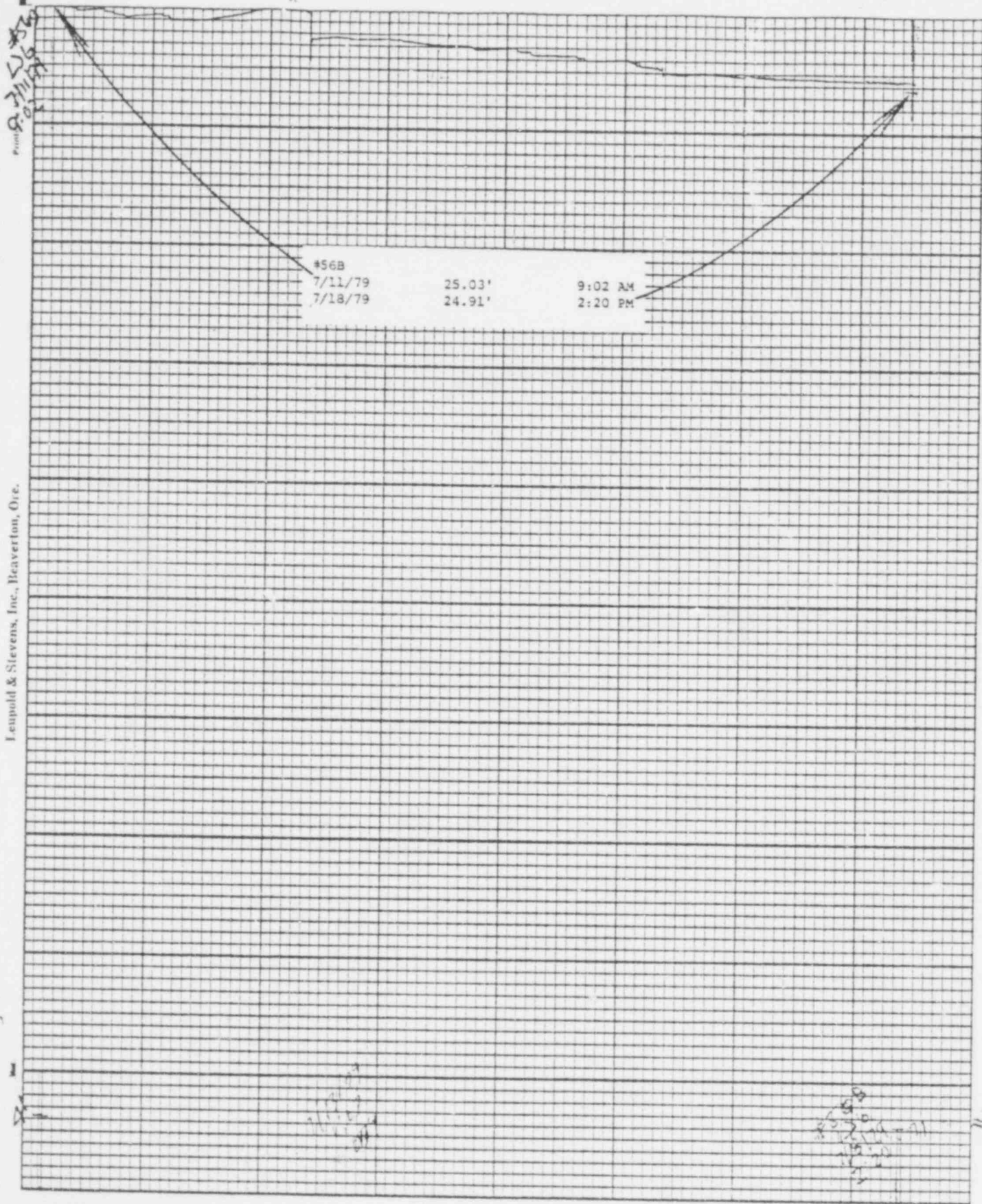
Chart F-1

Stevens Water Level Recorder — Type F

(S)

498 075
POOR ORIGINAL

Leupold & Stevens, Inc., Beaverton, Ore.



Stevens Water Level Recorder — Type F

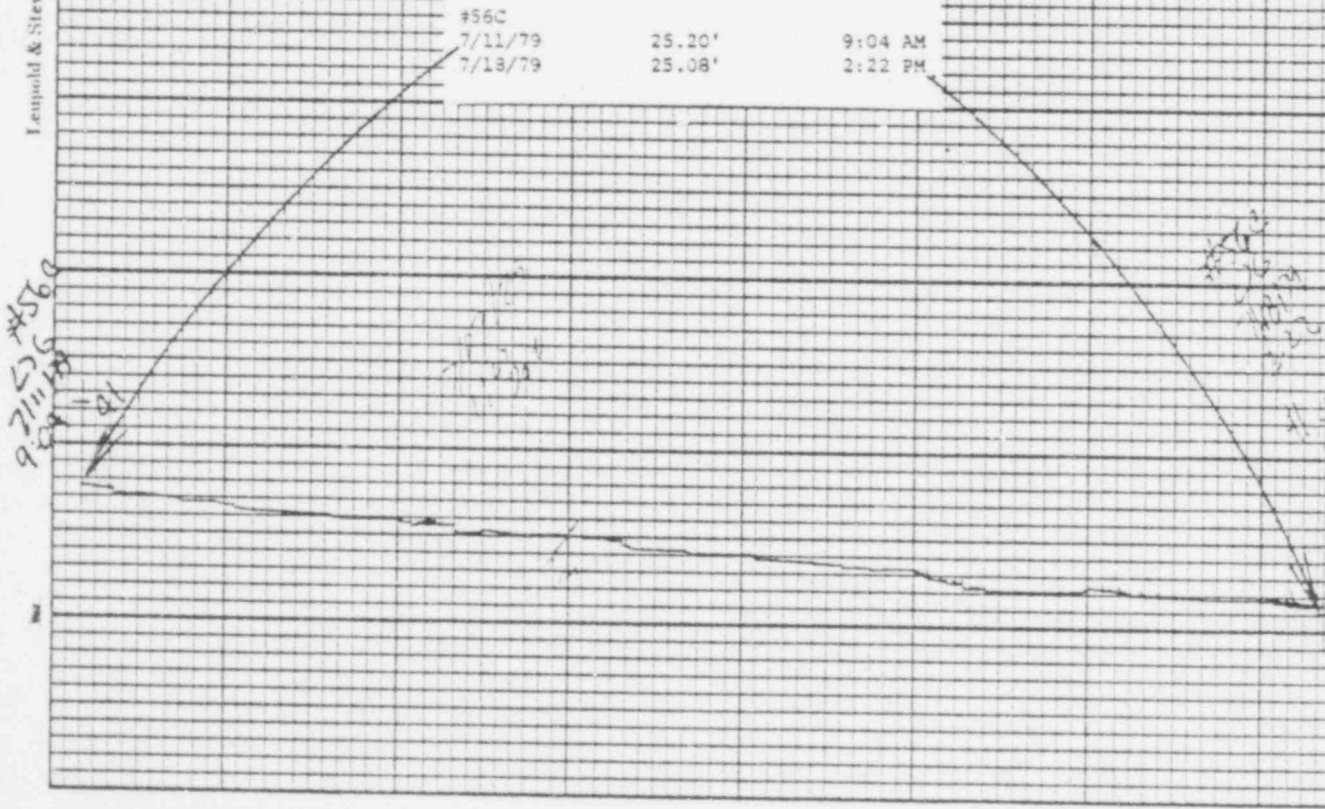
(S)

Chart F-1

POOR ORIGINAL

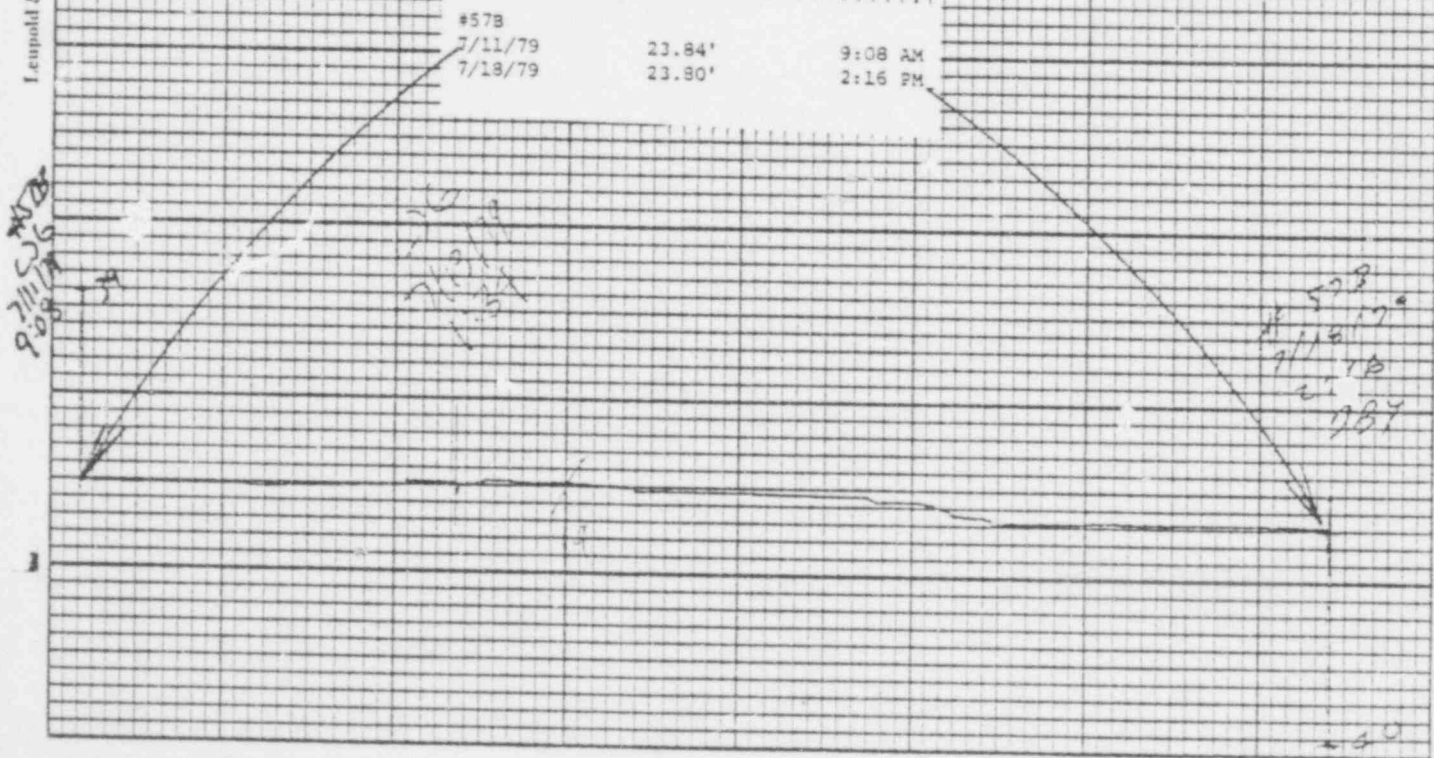
498

076



POOR ORIGINAL

498 078



Leaverton, Ore.

#57C		
7/11/79	20.90'	9:09 AM
7/18/79	20.77'	2:14 PM

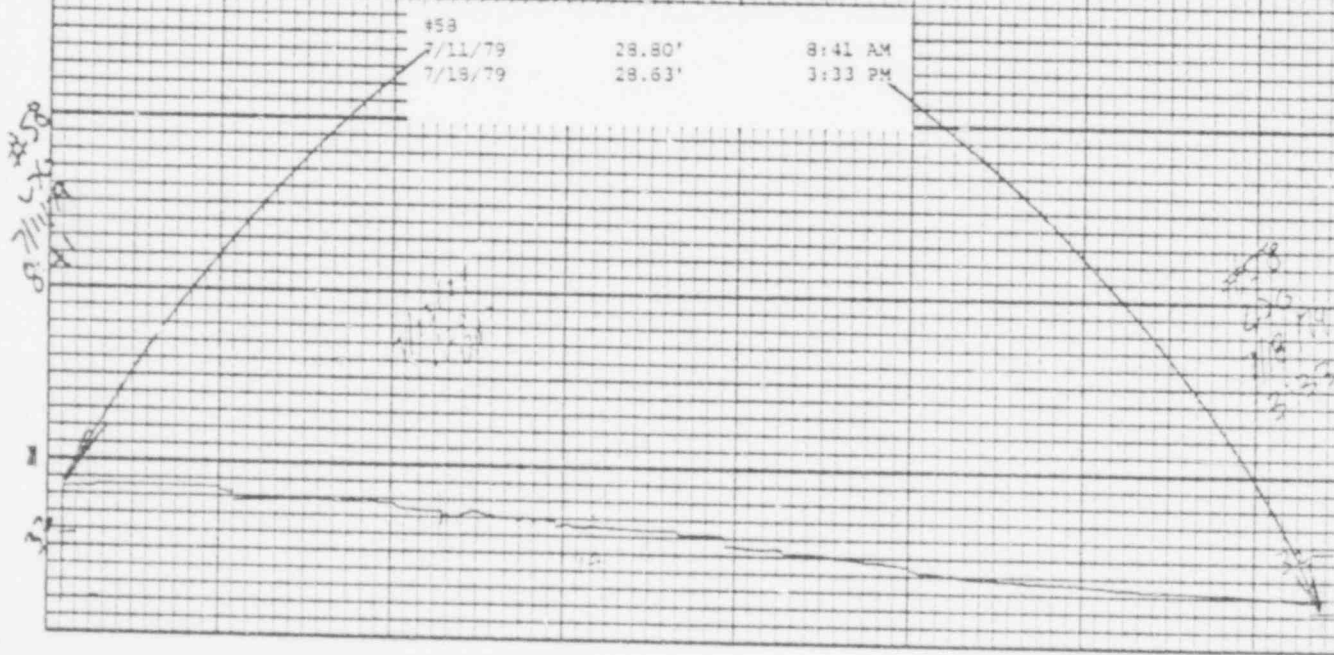
Stevens Water Level Recorder — Type F

POOR ORIGINAL

498

080

079



POOR ORIGINAL
493 080

Leupold & Stevens, Inc., Heaverton, Ore.

Stevens Water Level Recorder - Type F

5598
7/11/79
8:45

#538

7/11/79

24.75'

8:45 AM

7/19/79

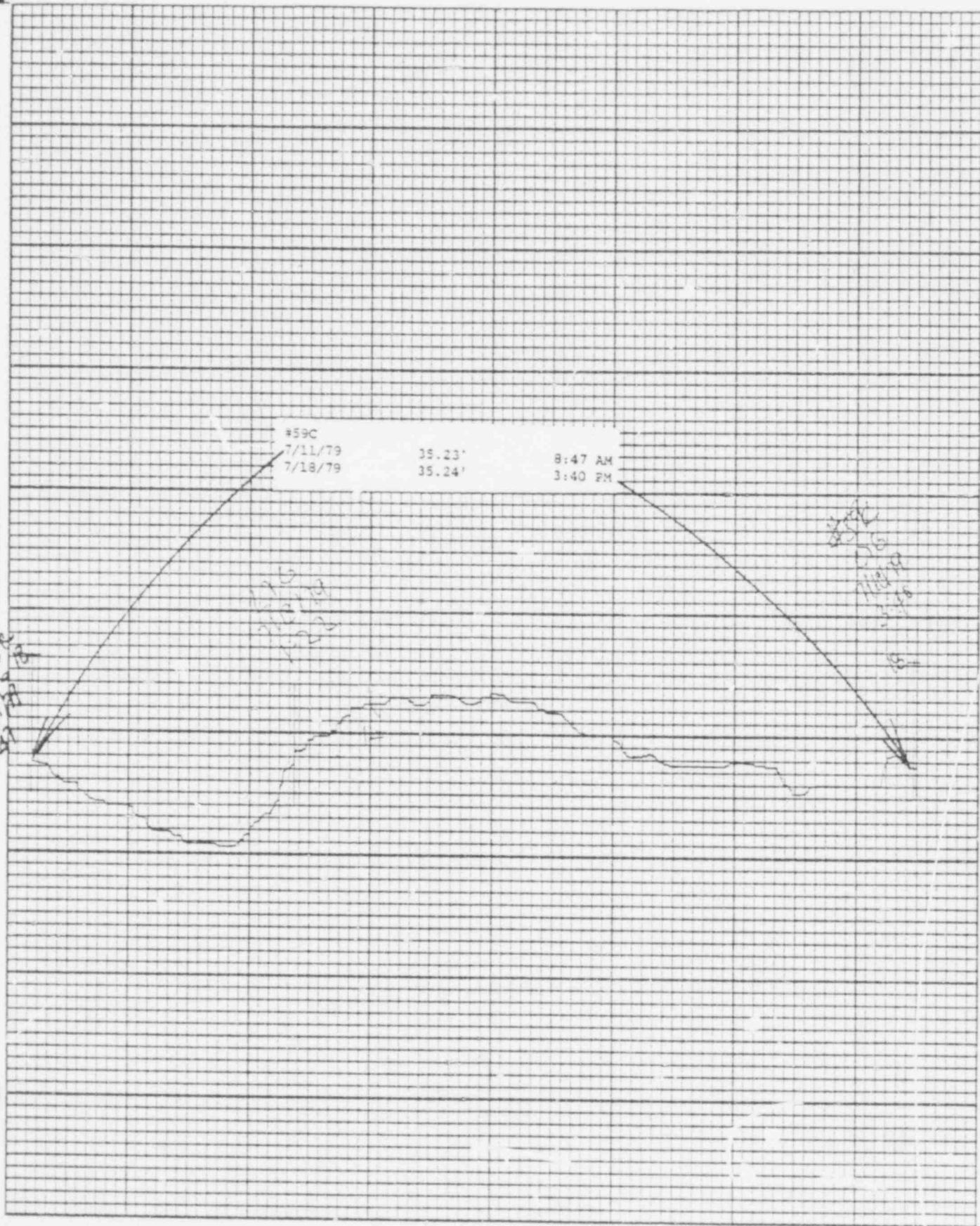
24.65'

3:40 PM

5598
7/11/79
8:45
7/19/79
3:40

493 081
POOR ORIGINAL

Stevens Water Level Recorder, Inc., Beaverton, Ore.



Stevens Water Level Recorder — Type F

498 083
POOR ORIGINAL

BAILLY WELLS WITHOUT RECORDERS

<u>WELL #</u>	<u>WATER ELEVATION IN FEET</u>
62	32.55
65	27.77
67	23.25
72	10.96
73	11.35
74	14.77

DBY:lr
7/20/79

POND LEVELS

<u>POND</u>	<u>7/18/79</u>
1	29.12'
2	30.50'
3	29.21'
4	24.17'
5	23.56'
6	33.35'
7	28.44'
8	DRY
9	28.43'
10	38.45'
11	39.34'
12	38.66'
13	38.30'

DBY:lr
7/20/79

498 084

PNEUMATIC PRESSURE TRANSDUCERS

7/18/79

<u>TRANSDUCER</u>	<u>WATER ELEVATION IN FEET</u>
P-1	11.4
P-2	10.2
P-3	7.8
P-4	14.4
P-5	14.9
P-6	15.3

DBY:lr
7/20/79

498 086

WATER METER READINGS

<u>DATE</u>	<u>TIME</u>	<u>METER READING (GALLONS)</u>	<u>INSTANTANEOUS FLOW RATE (GPM)</u>
-------------	-------------	--	--

Sump Pump Discharge

7/18/79	4:04 PM	280796000	238
---------	---------	-----------	-----

Well Point Discharge

SYSTEM NOT IN USE

DBY:lr
7/20/79