



## Northern Indiana Public Service Company

Nuclear Staff  
RR # 3, Box 501  
Chesterton, IN 46304  
July 20, 1979

BAILLY GENERATING STATION N-1

Mr. Ronald Ballard  
Environmental Projects Branch No.1  
Directorate of Licensing  
U.S. Nuclear Regulatory Commission  
Washington, D.C. 20545

RE: NORTHERN INDIANA PUBLIC SERVICE COMPANY  
BAILLY GENERATING STATION NUCLEAR 1  
DOCKET 50-367

Dear Mr. Ballard:

Enclosed herewith are ten (10) copies of the following:

1. Well Charts for July 5, 1979 - July 11, 1979.
2. Bailly Wells Without Recorders for July 11, 1979.
3. Pond Levels for July 11, 1979.
4. Pneumatic Pressure Transducers for July 11, 1979.
5. Water Meter Readings for July 11, 1979.

Sincerely,

R. J. Bohn  
Manager, Nuclear Staff

*ckp*  
DEY:lu

Enclosures

File: Ground Water Observation Monitoring Wells

*Dock  
ES  
-11*

422 091

32

79072-5245

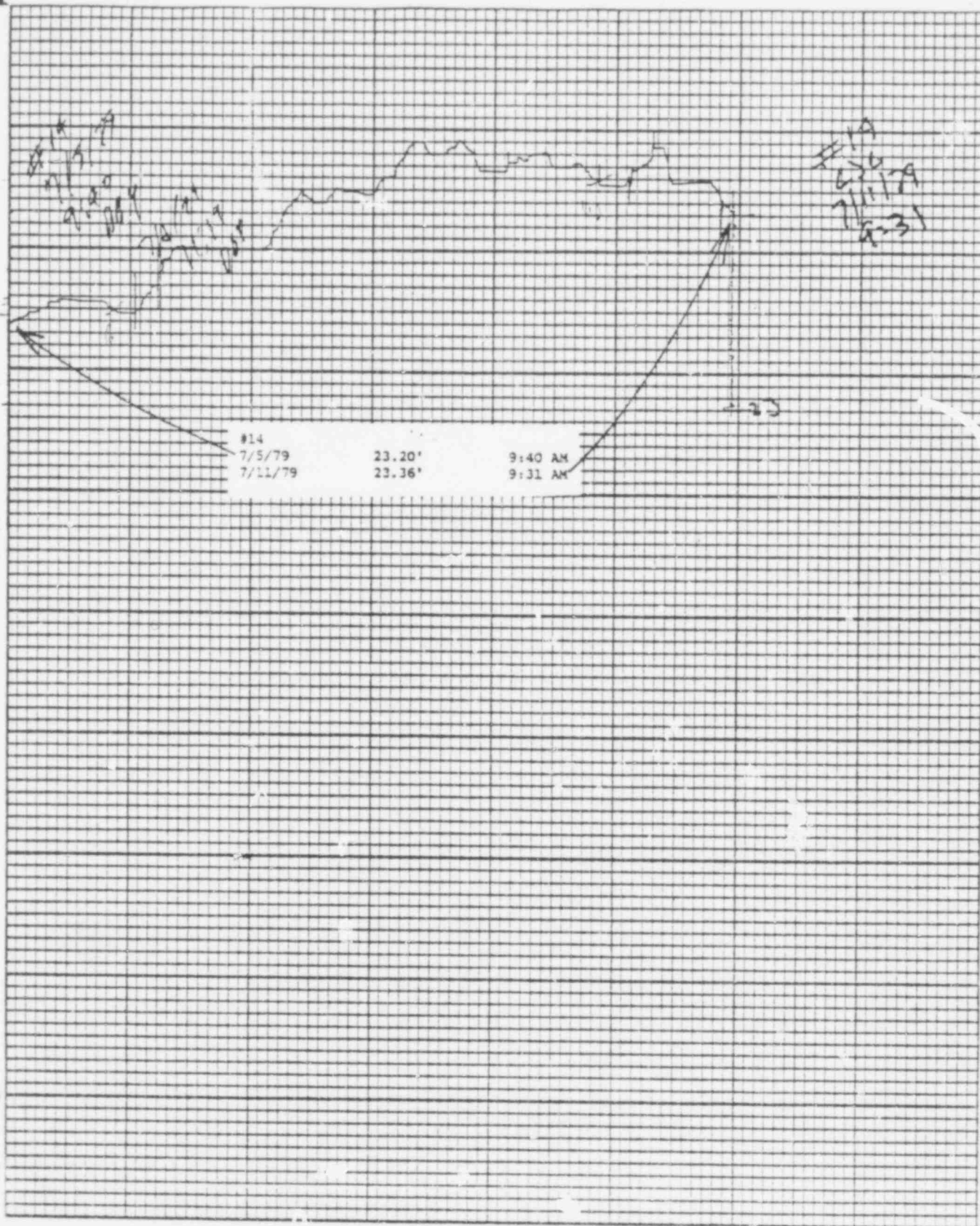
Printed on U.S.A.

Leupold & Stevens, Inc., Beaverlton, Ore.

Chart F-1

Stevens Water Level Recorder — Type F

5



22 092

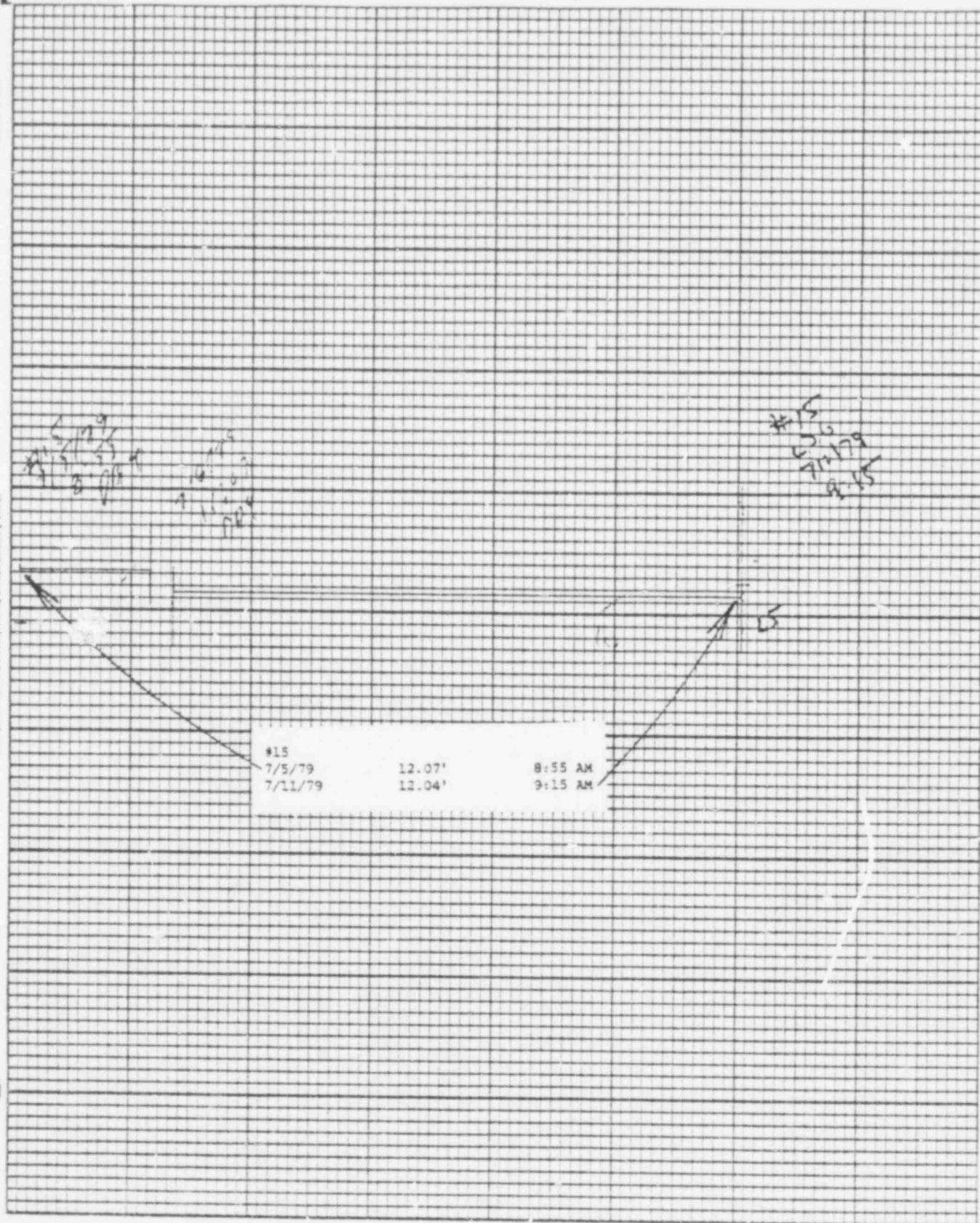
POOR ORIGINAL

Printed in U.S.A.

Chart F-1

Leupold & Stevens, Inc., Heaverston, Ohio

Stevens Water Level Recorder — Type F



422 093

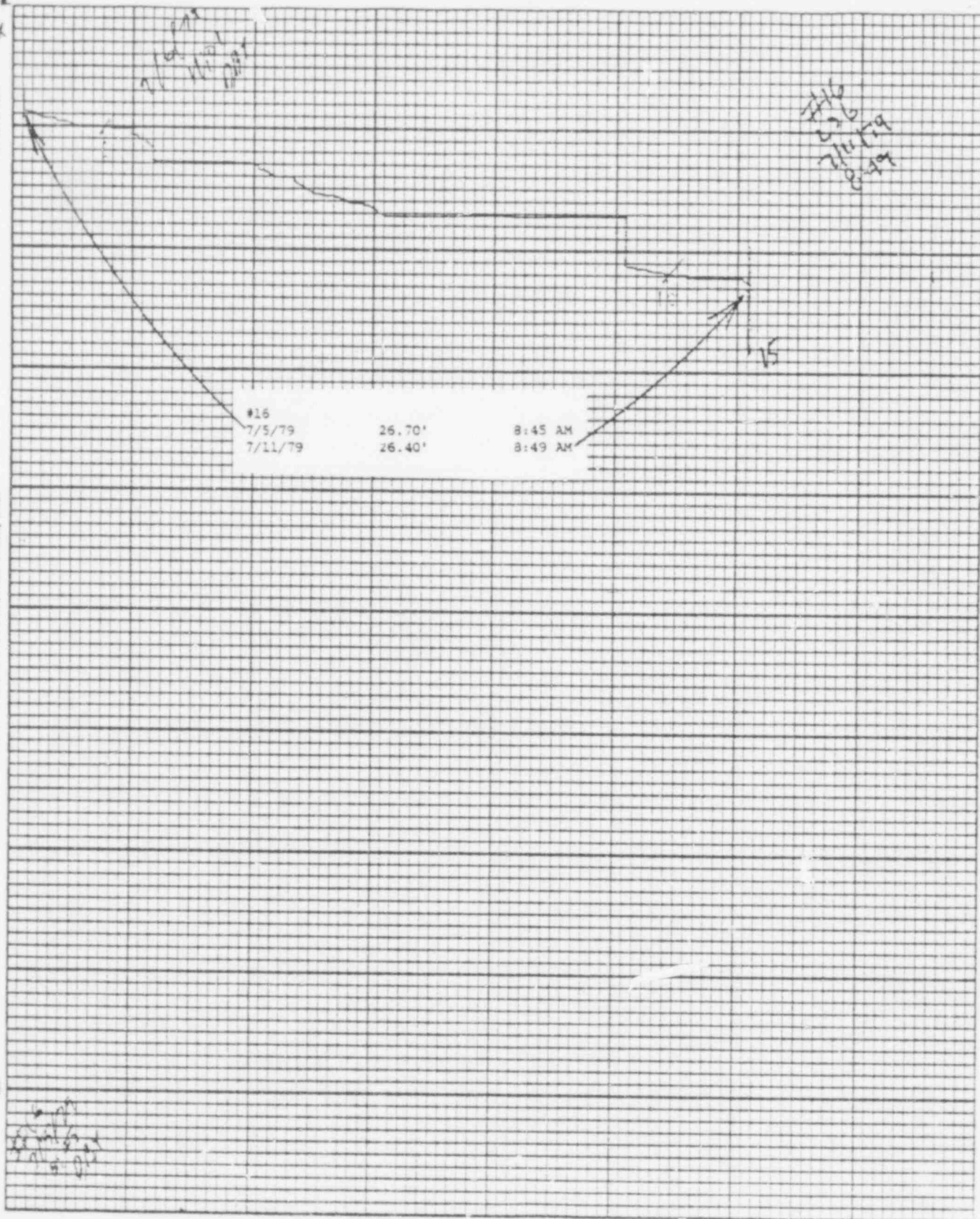
POOR ORIGINAL

Printed in U.S.A.

Leupold & Stevens, Inc., Beaverlton, Ore.

Chart F-1

Stevens Water Level Recorder — Type F



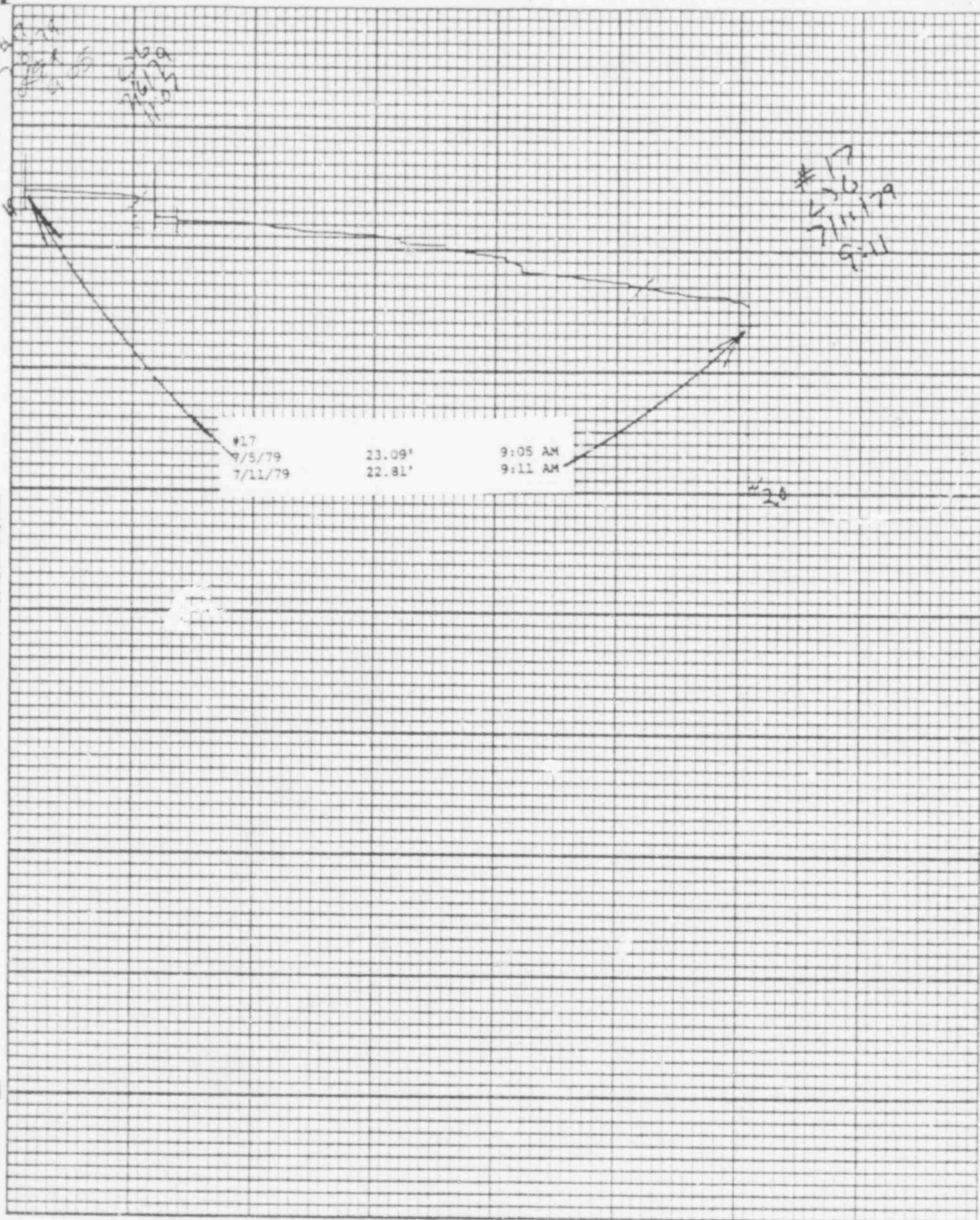
422 094

POOR ORIGINAL



Leupold & Stevens, Inc., Beaverton, Ore.

Printed in U.S.A.



Stevens Water Level Recorder — Type F

Chart F-1

422 095

POOR ORIGINAL

8-15-79

Leupold & Stevens, Inc., Beaverton, Ore.

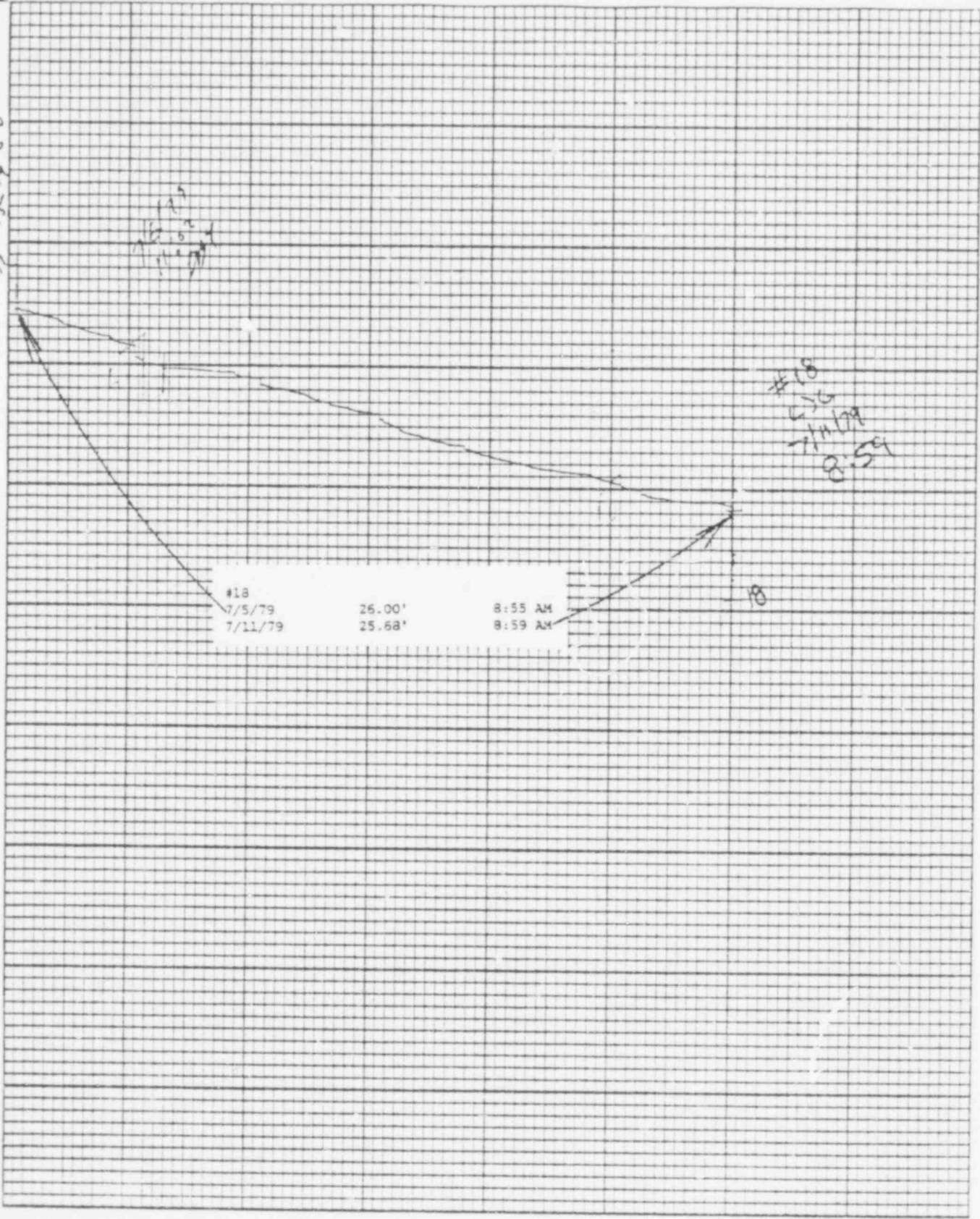


Chart 1

Stevens Water Level Recorder — Type F

422 096

POOR ORIGINAL

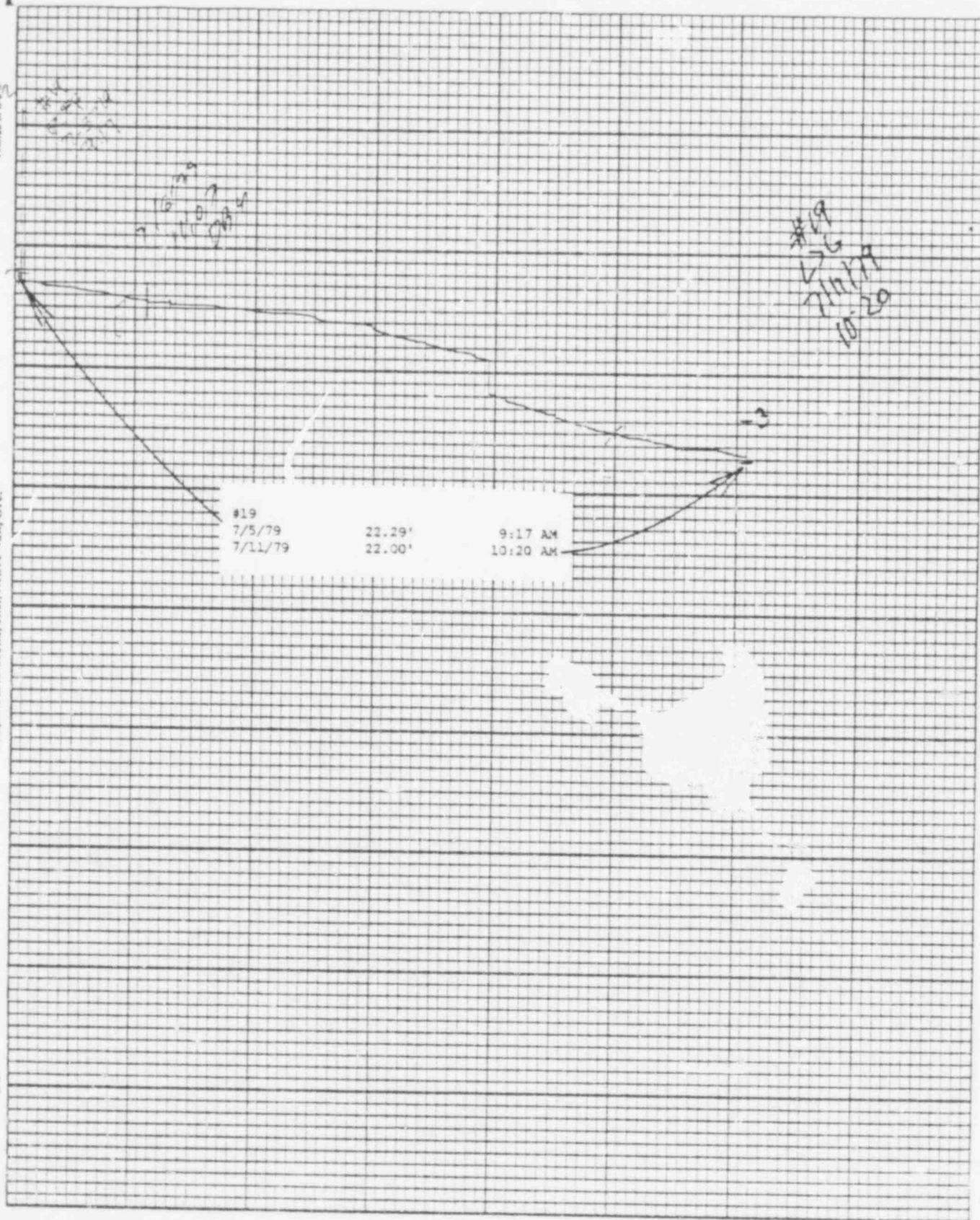
Printed in U.S.A.

Leupold & Stevens, Inc., Peasapton, Ore.

Chart F-1

Stevens Water Level Recorder — Type F

(S)



422 097

POOR ORIGINAL

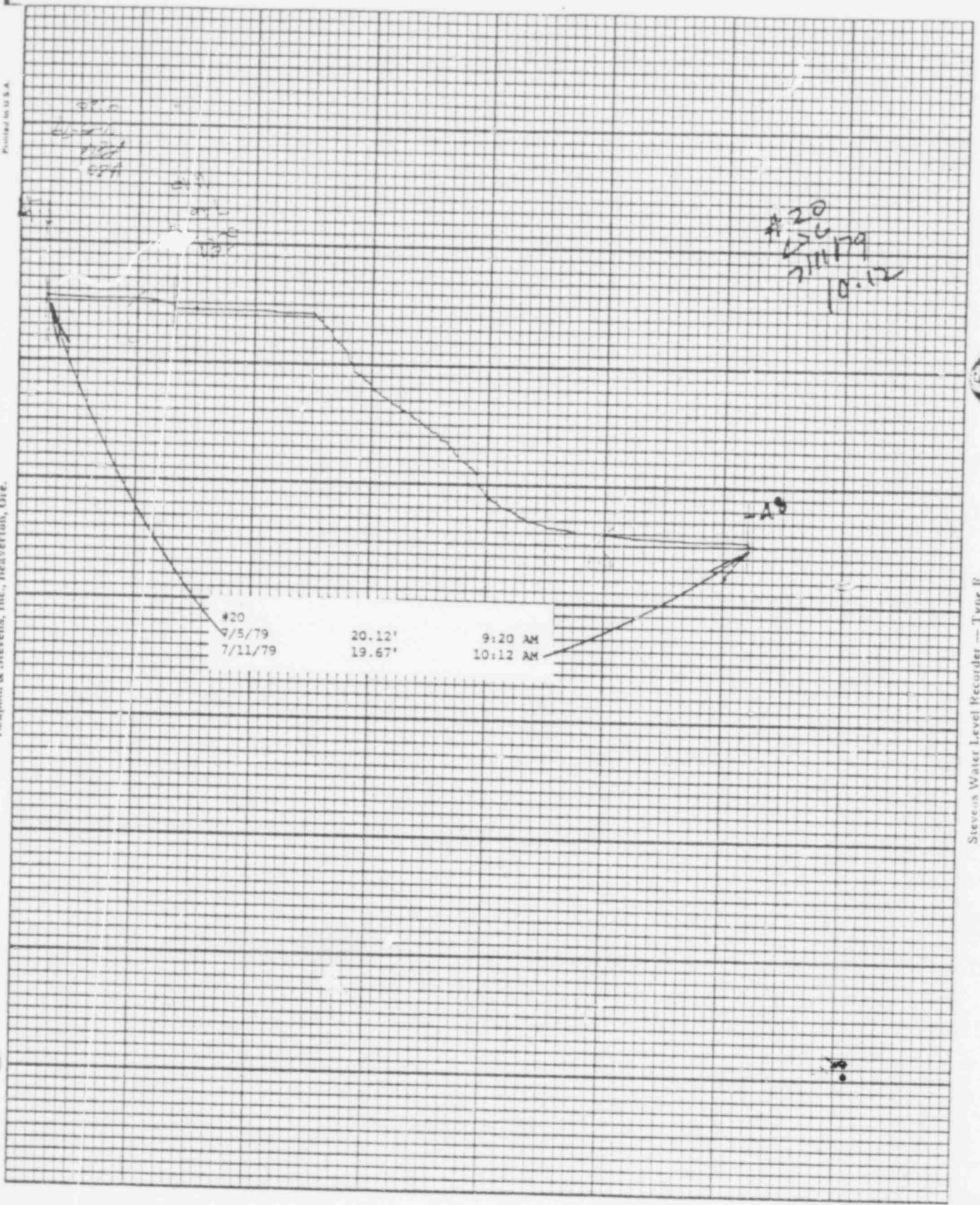


Printed in U.S.A.

Leopold & Stevens, Inc., Heaverton, Ore.

Chart F-1

Stevens Water Level Recorder - Type P



422 098

POOR ORIGINAL



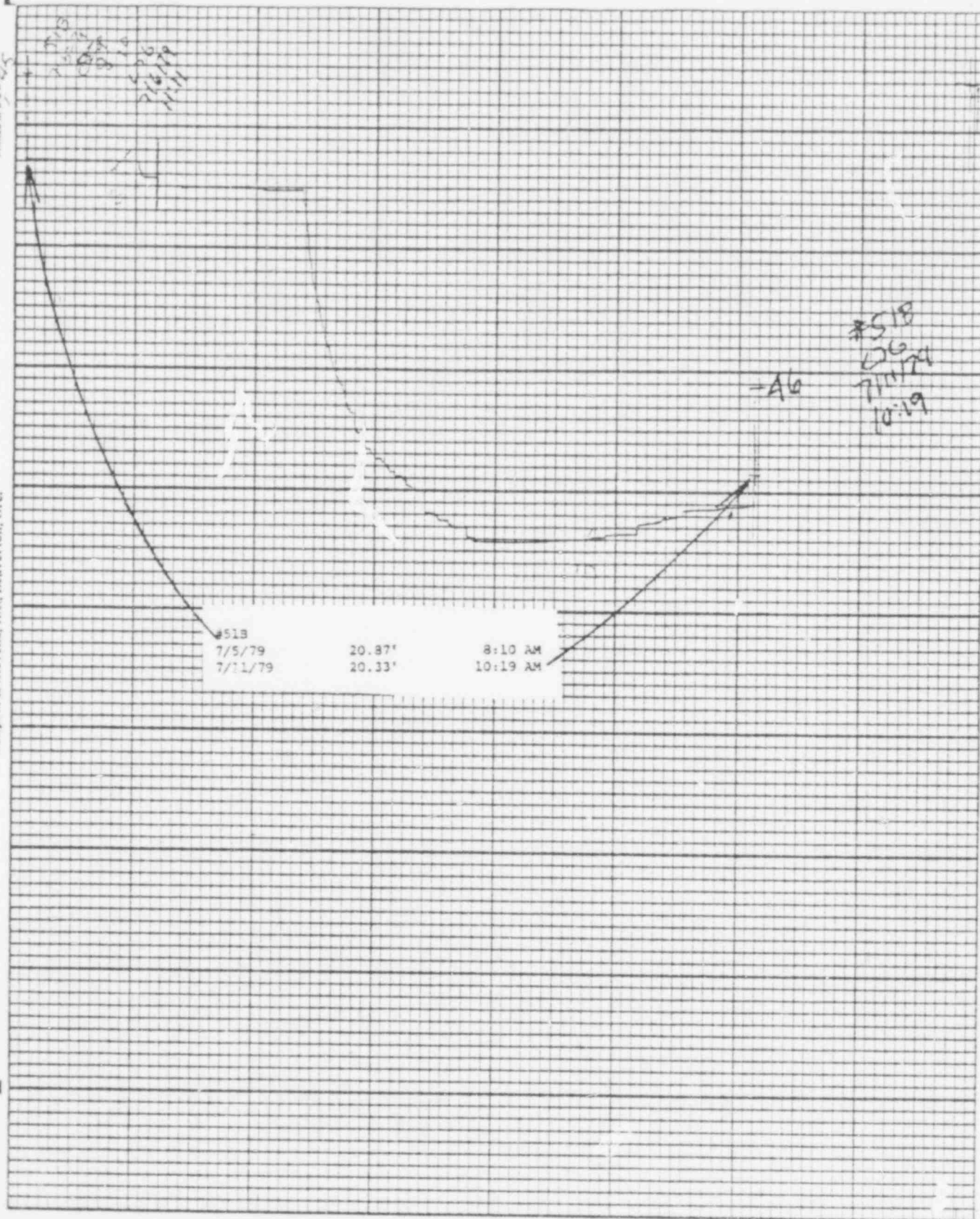
Printed in U.S.A.

Leupold & Stevens, Inc., Beaverlton, Ore.

Chart P-1

S

Stevens Water Level Recorder — Type F



422 099

POOR ORIGINAL

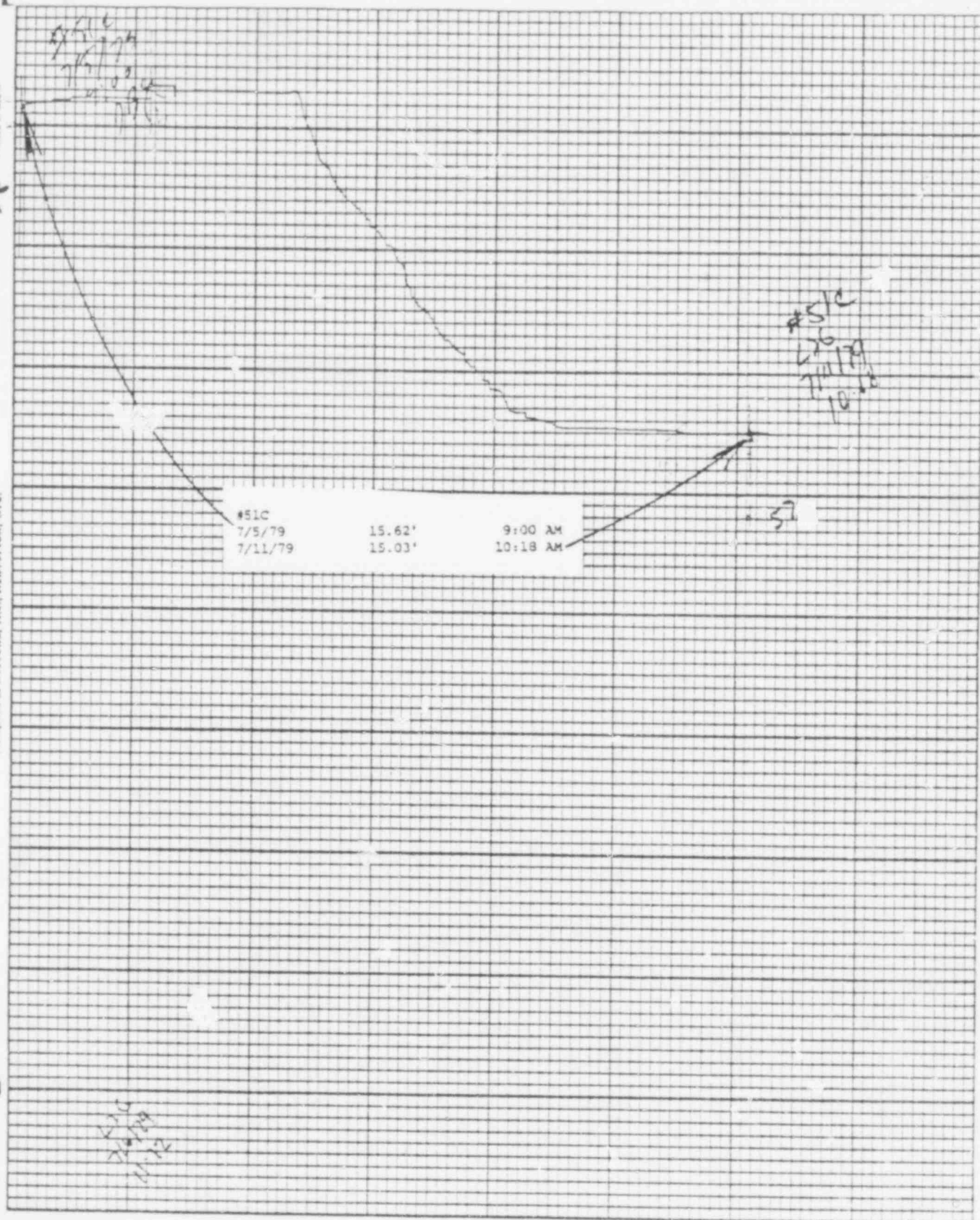
Leupold & Stevens, Inc., Beaverton, Ore.

Printed in U.S.A.

Chart F-1

Stevens Water Level Recorder — Type F

(5)



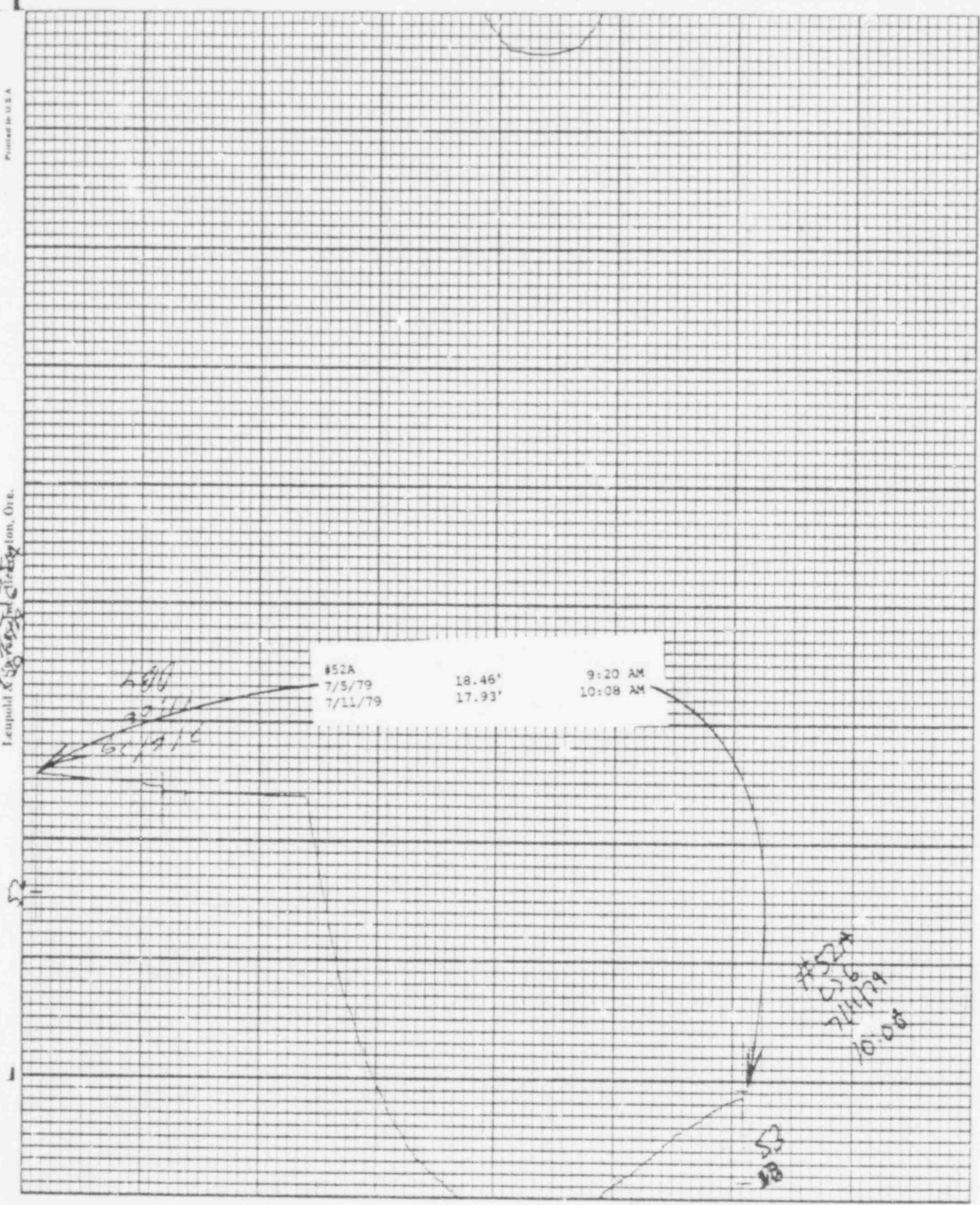
422 100

POOR ORIGINAL

Leupold & Stevens, Inc.

Stevens Water Level Recorder — Type F

(S)



422 101

POOR ORIGINAL



9-7578  
7-18

Leupold & Stevens, Inc., Beaverton, Ore.

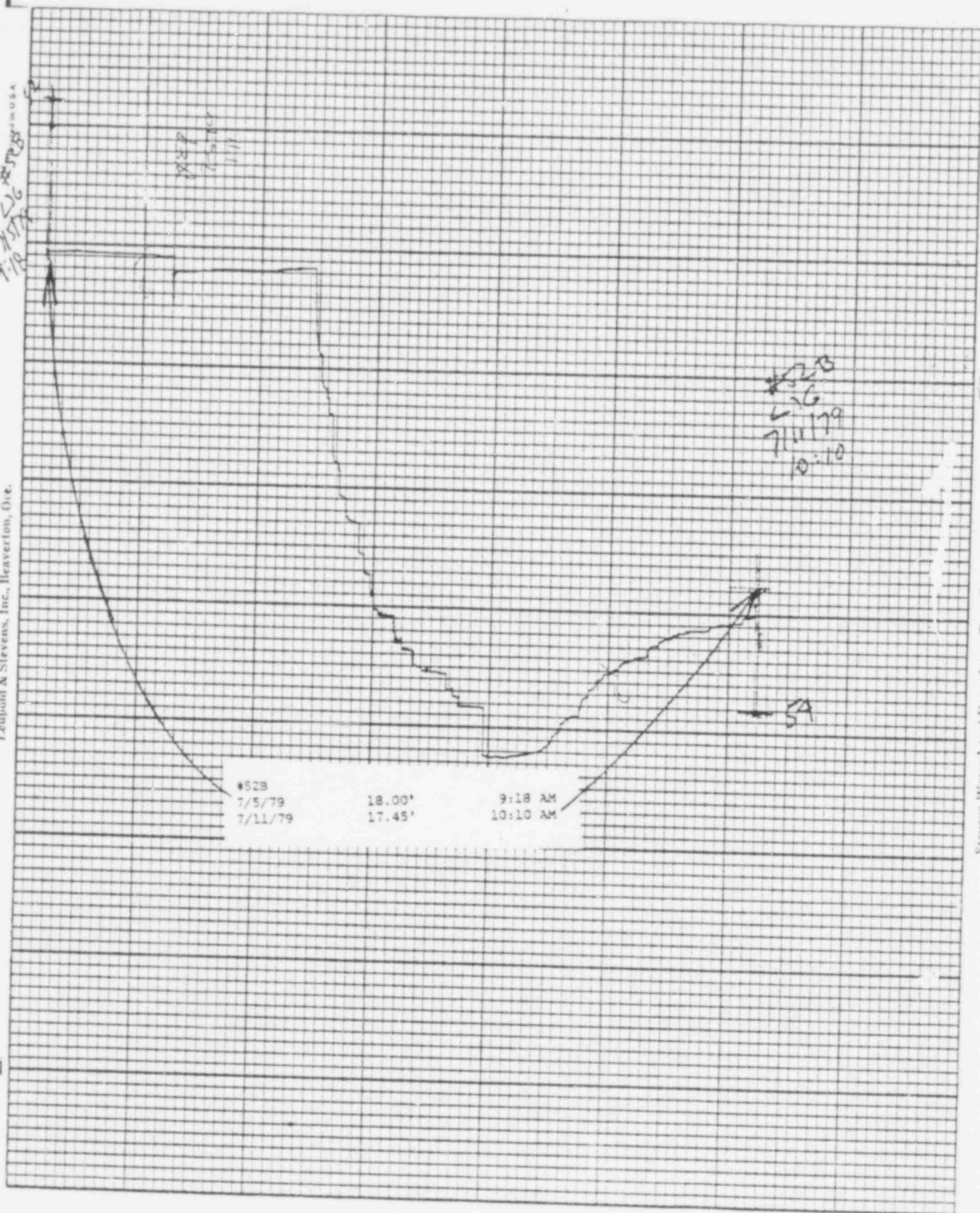


Chart F-1

Stevens Water Level Recorder — Type F

(S)

422 102

POOR ORIGINAL





7/5/79  
9:17 AM

#52C  
7/5/79  
7/11/79

21.27'  
20.97'

9:17 AM  
10:11 AM

#52C  
7/11/79  
10:11 AM

422 103

POOR ORIGINAL

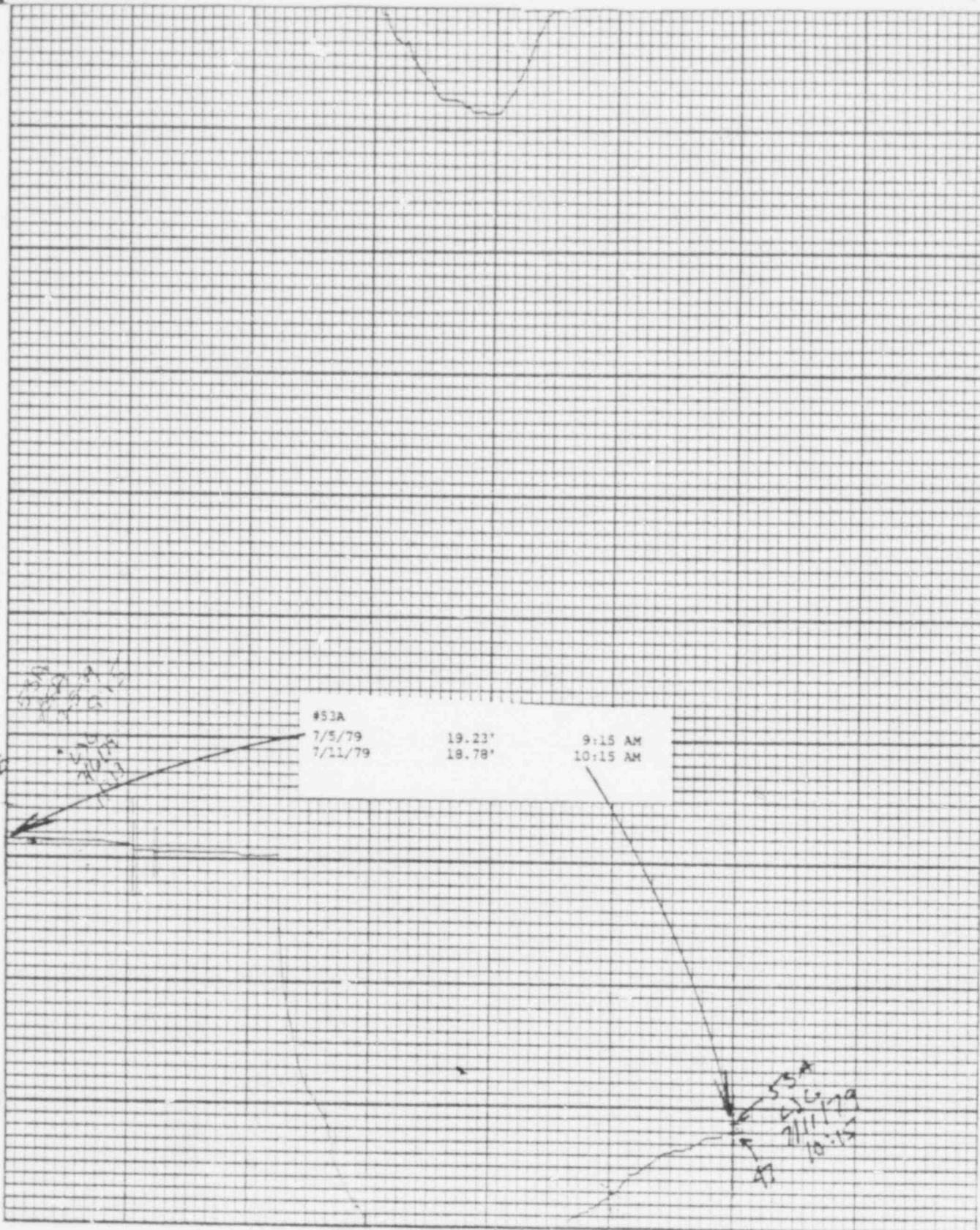
Printed in U.S.A.

Leupold & Stevens, Inc., Beaverton, Ore.

Chart F-1

(S)

Stevens Water Level Recorder — Type F



422 104

POOR ORIGINAL

Leupold & Stevens, Inc., Beaverton, Ore.

Chart P-1



Stevens Water Level Recorder — Type F

9.14  
7/5/79  
#538

#538  
L26  
7/11/79  
10.14

#538  
7/5/79  
7/11/79

18.28'  
17.82'

9:14 AM  
10:14 AM

9.14  
7/5/79  
#538

422 105

POOR ORIGINAL

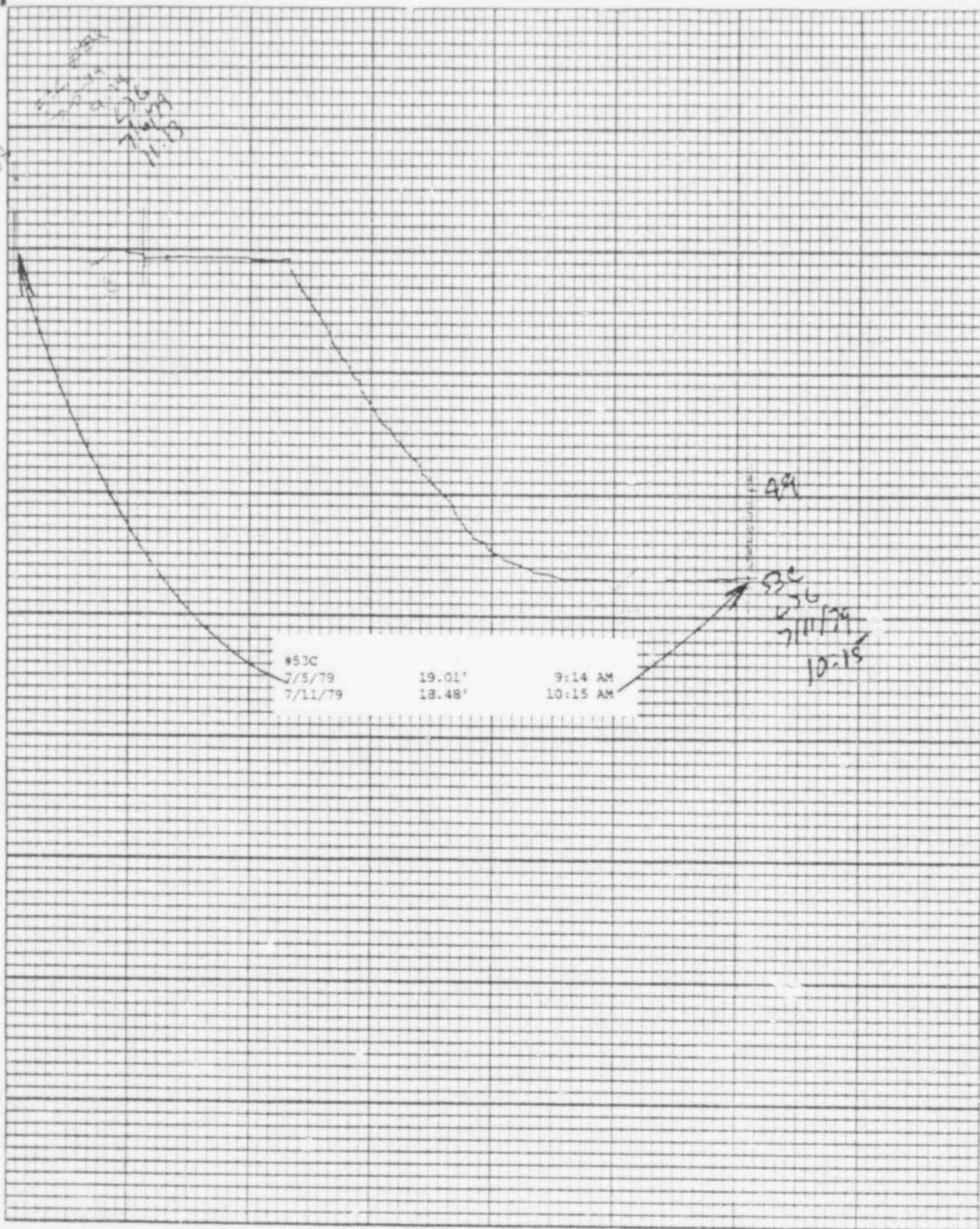


Printed in U.S.A.

Leupold & Stevens, Inc., Beaverton, Ore.

Chart P-1

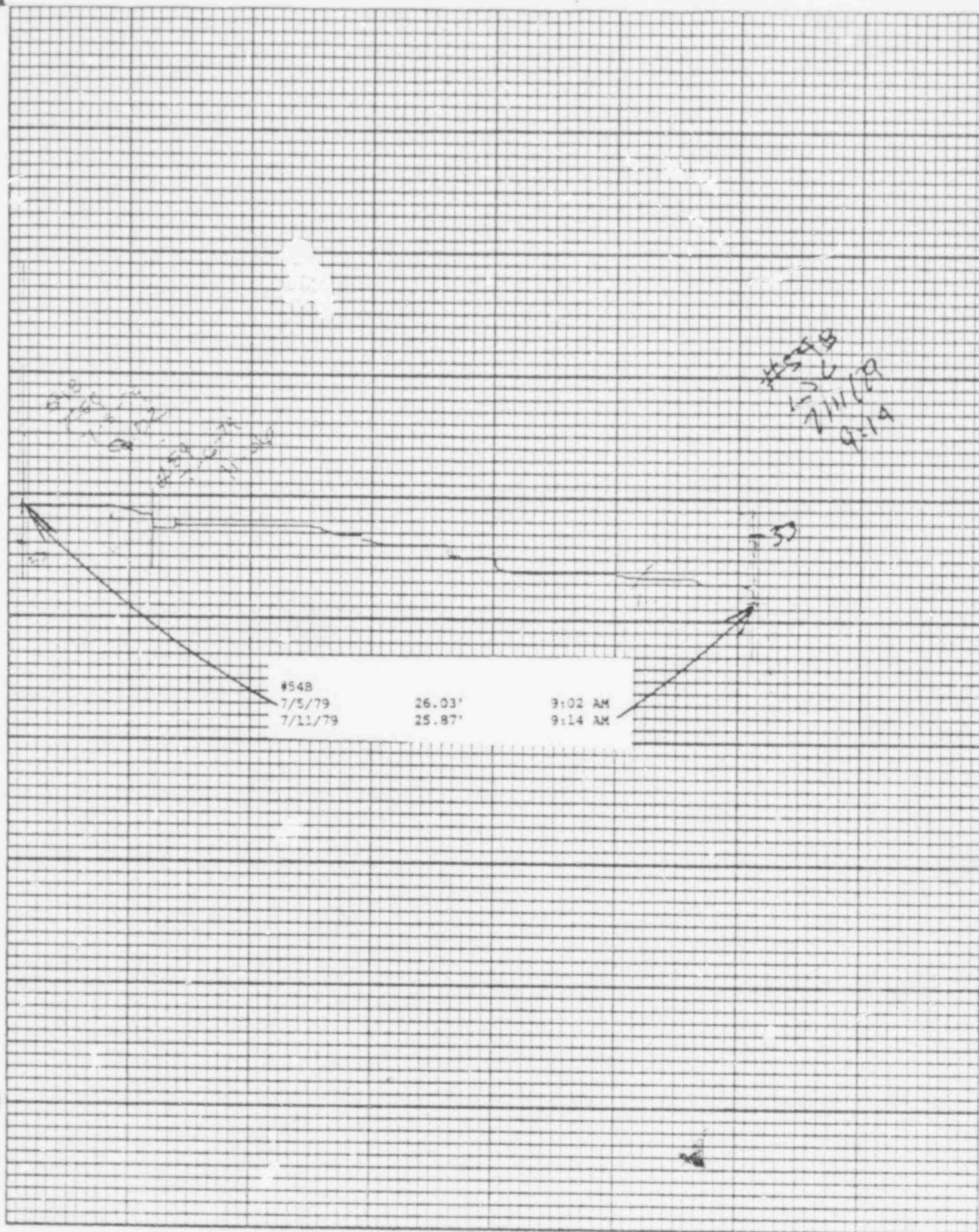
Stevens Water Level Recorder — Type F



422 106

POOR ORIGINAL





422 107

POOR ORIGINAL

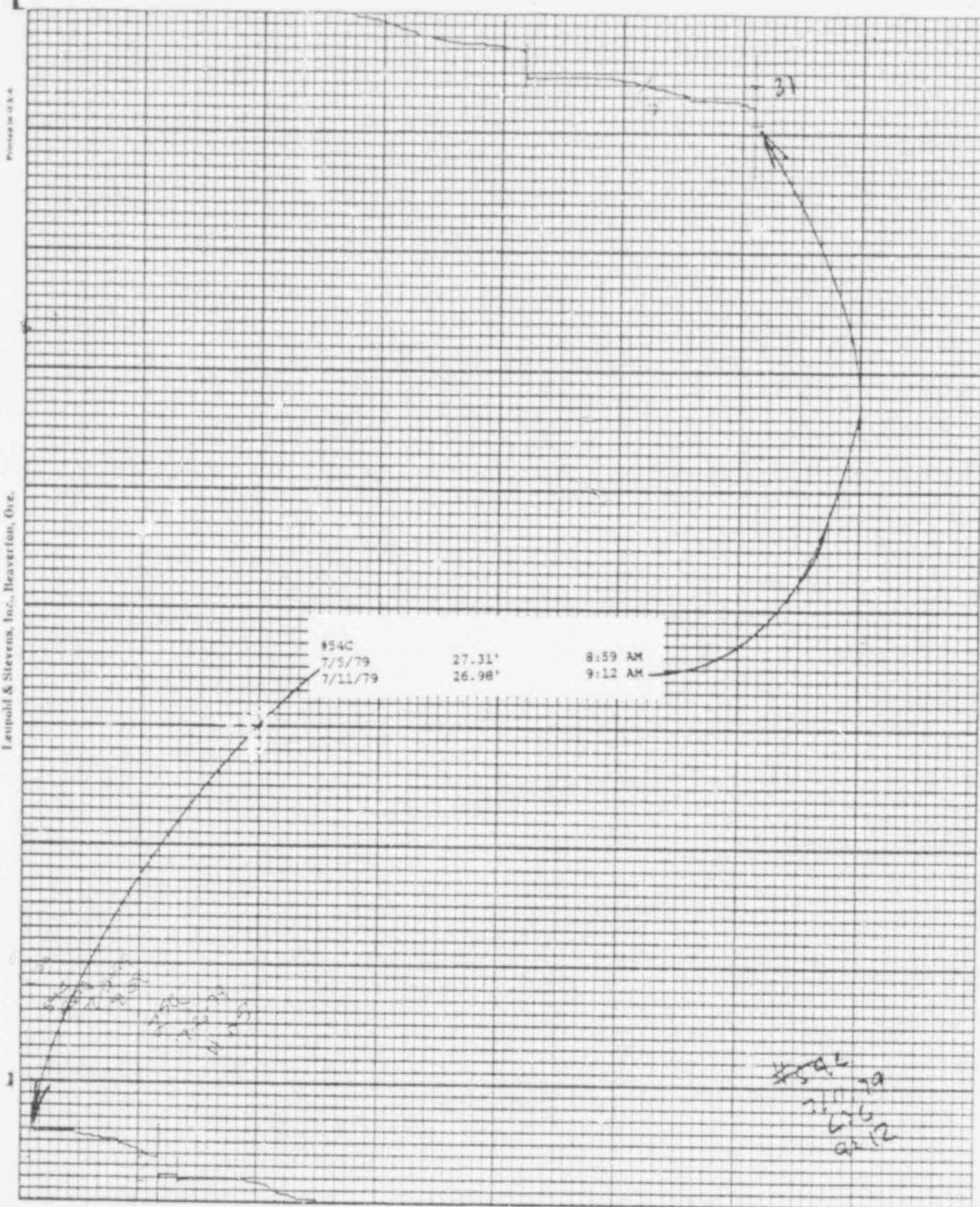
Printed in U.S.A.

Leopold & Stevens, Inc., Heaverton, Ore.

Chart P-1



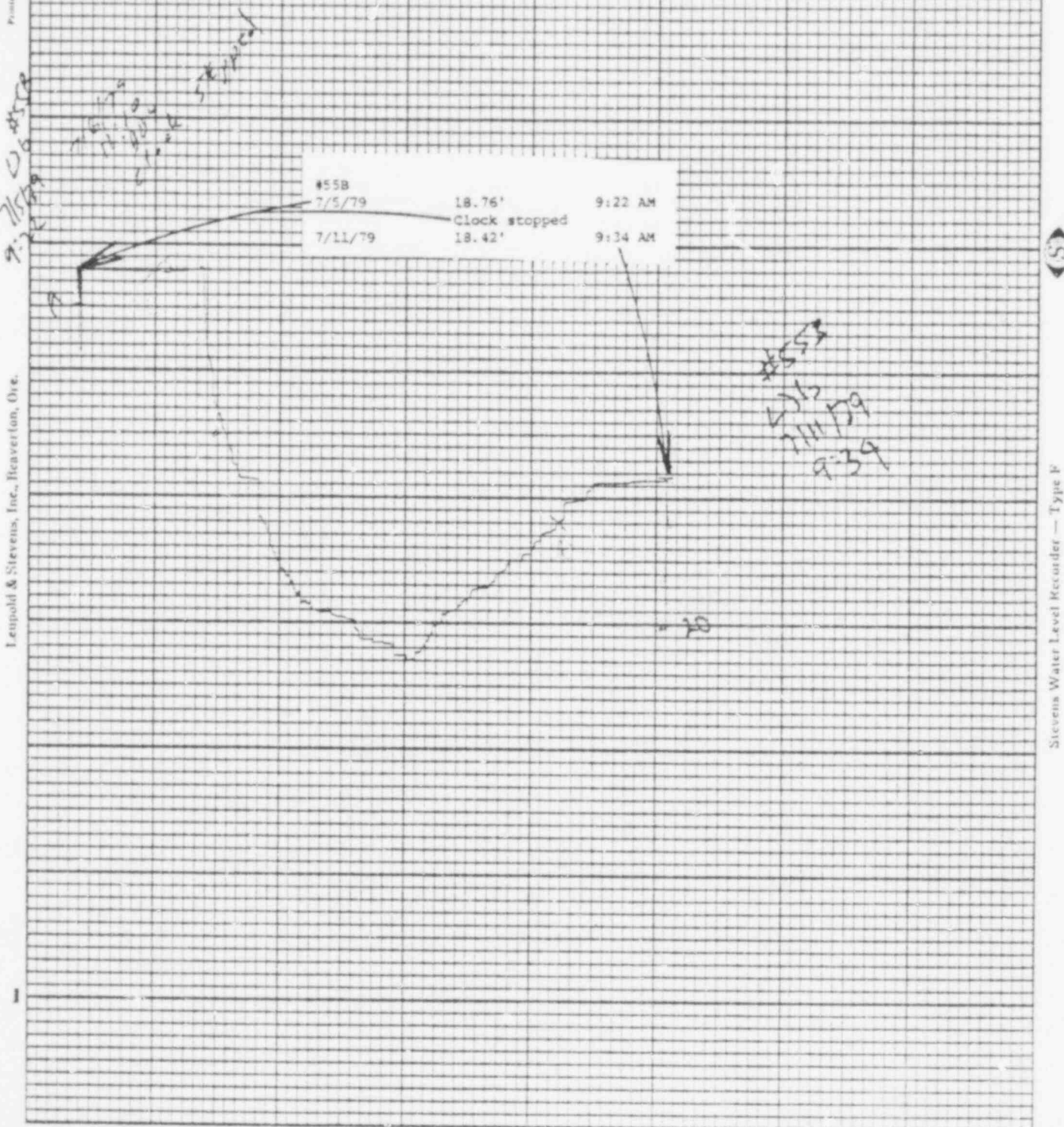
Stevens Water Level Recorder — Type F



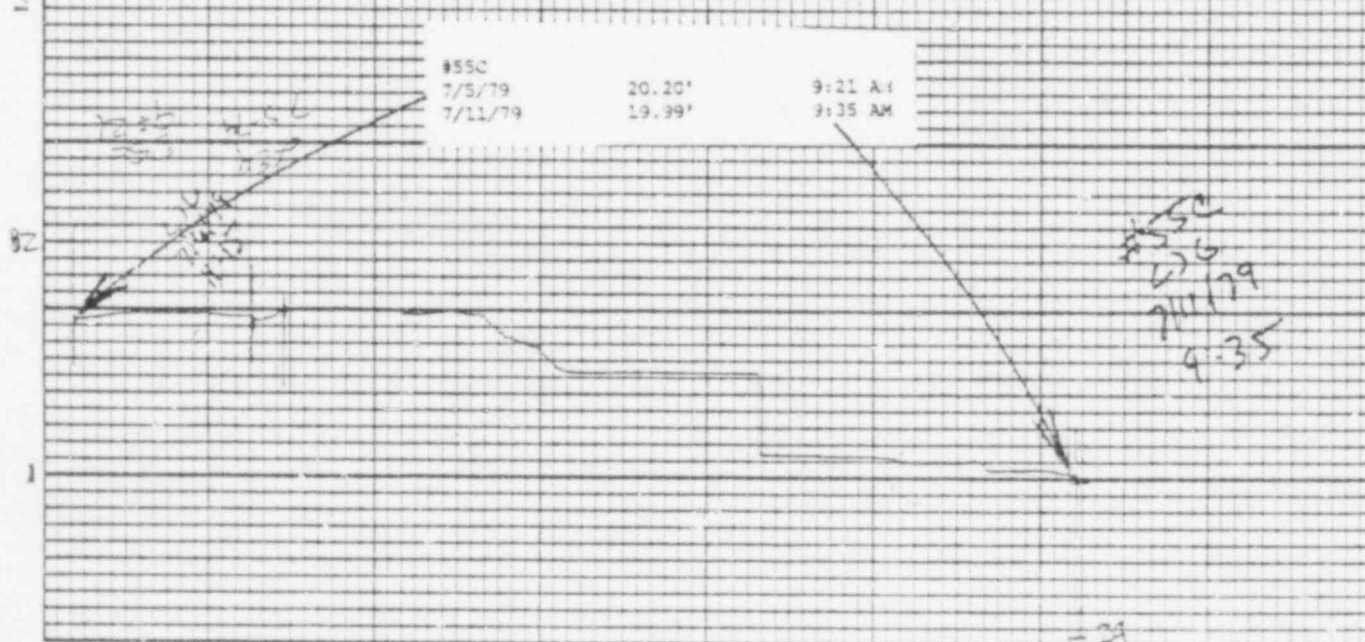
422

108

POOR ORIGINAL









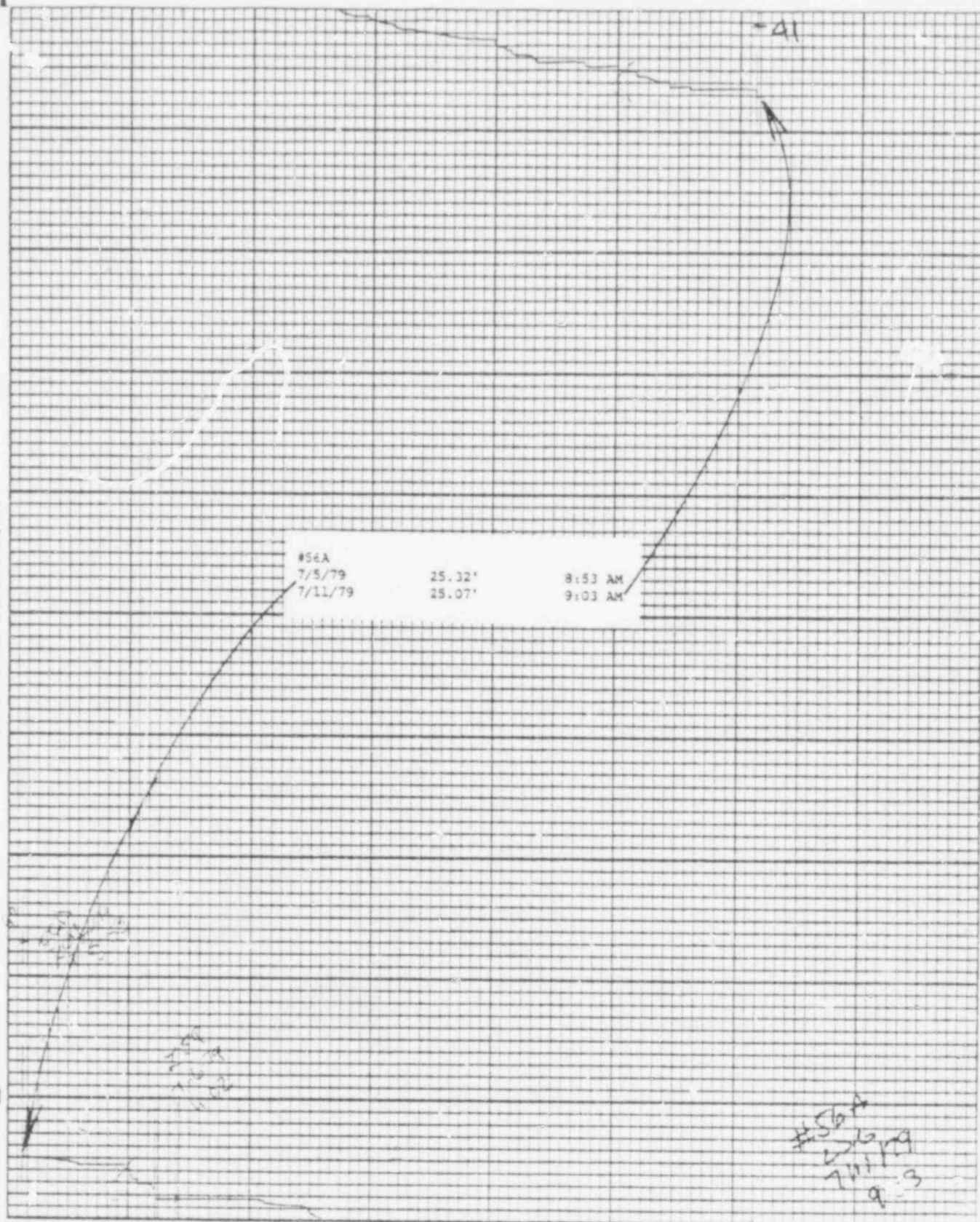
Printed in U.S.A.

Leupold & Stevens, Inc., Heaverton, Ore.

Chart F-1

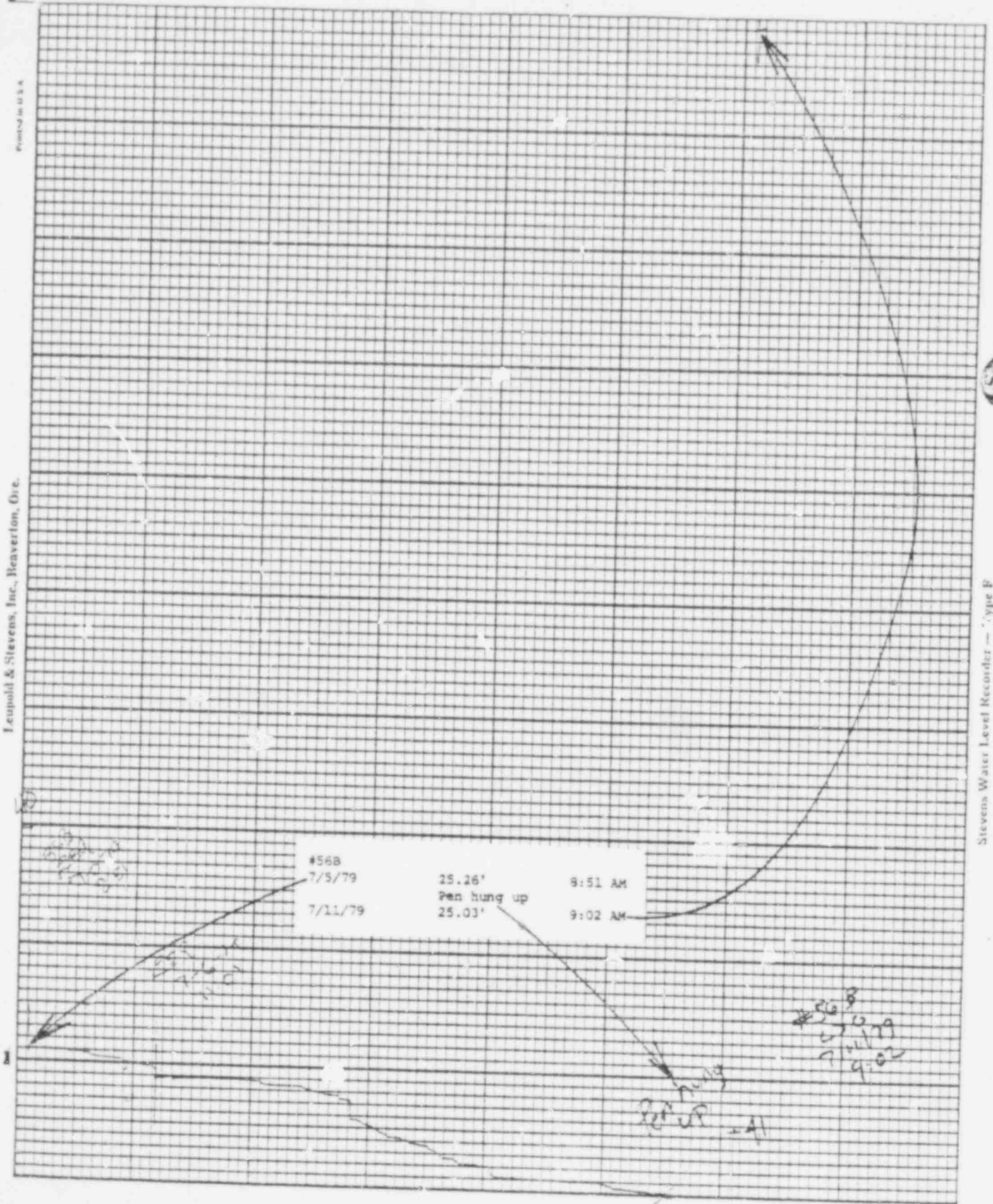
Stevens Water Level Recorder — Type F

5



422 111

POOR ORIGINAL

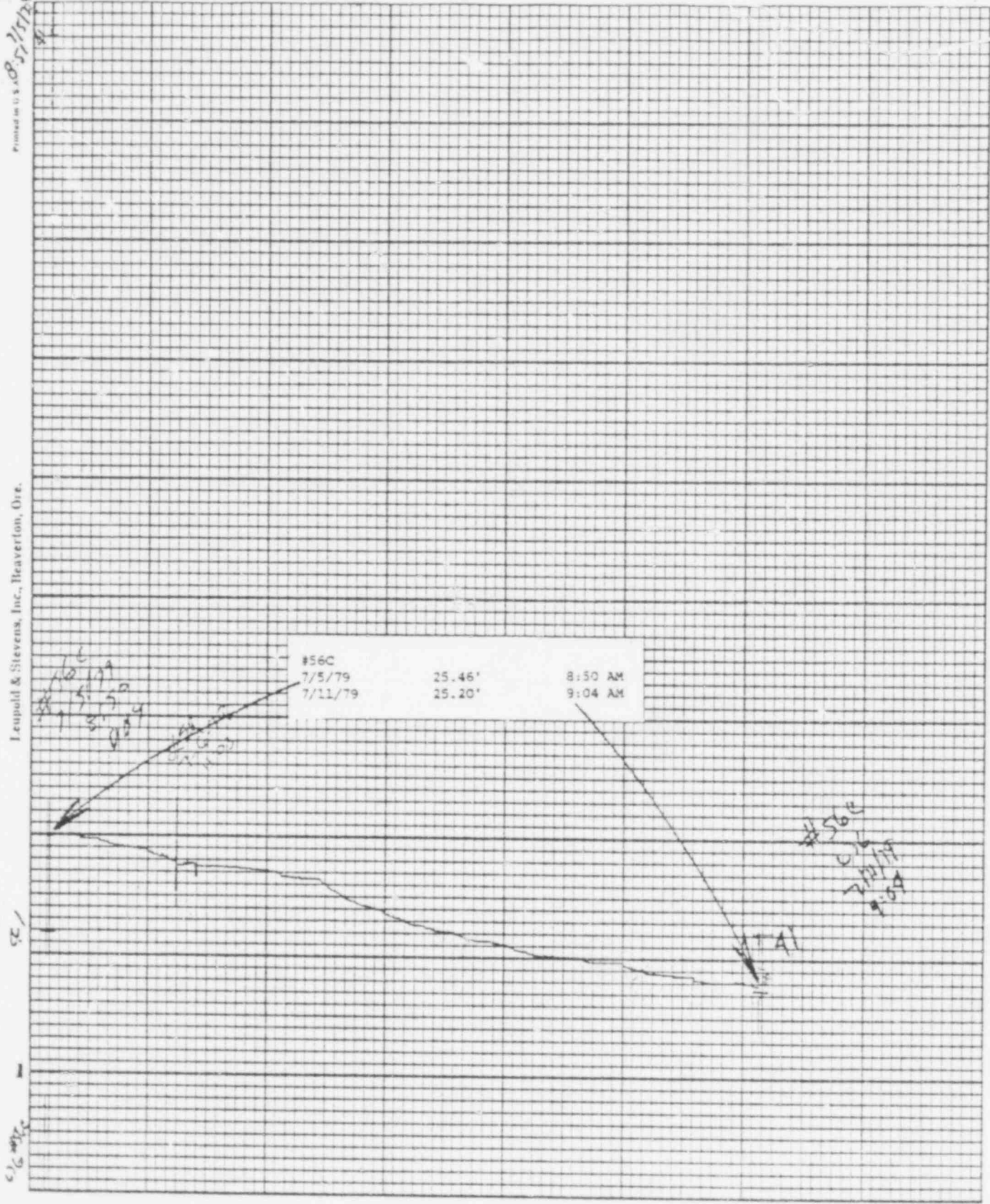


Printed on U.S. 8 1/2 x 11

Leupold & Stevens, Inc., Beaverton, Ore.

Chart F<sub>1</sub>

Stevens Water Level Recorder — Type F



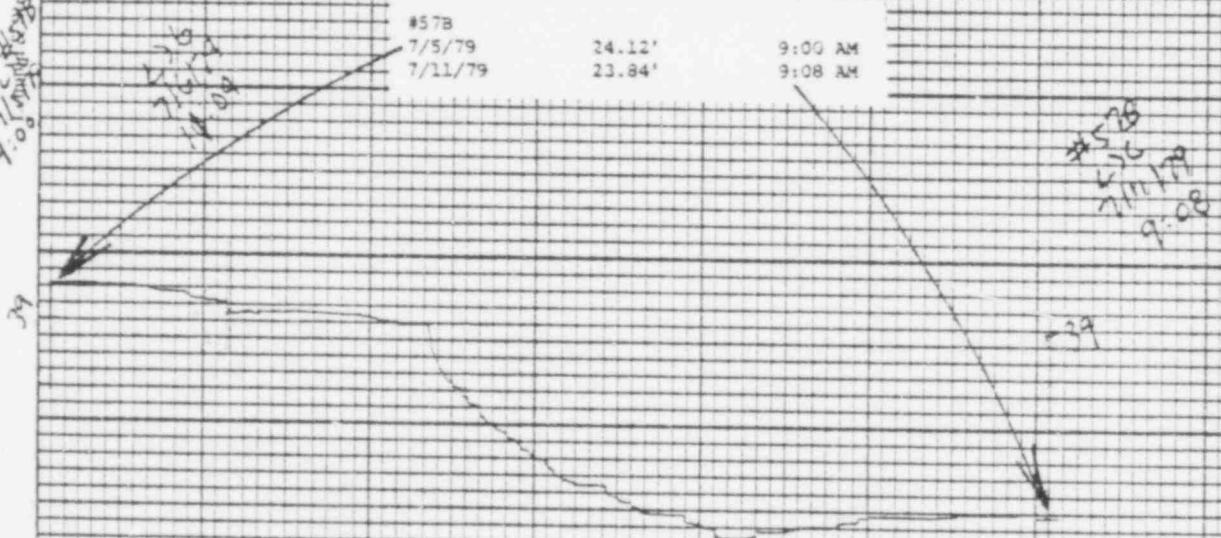
422 113

POOR ORIGINAL





P.O. #578 Stevens, Inc., Beaverton, Ore.

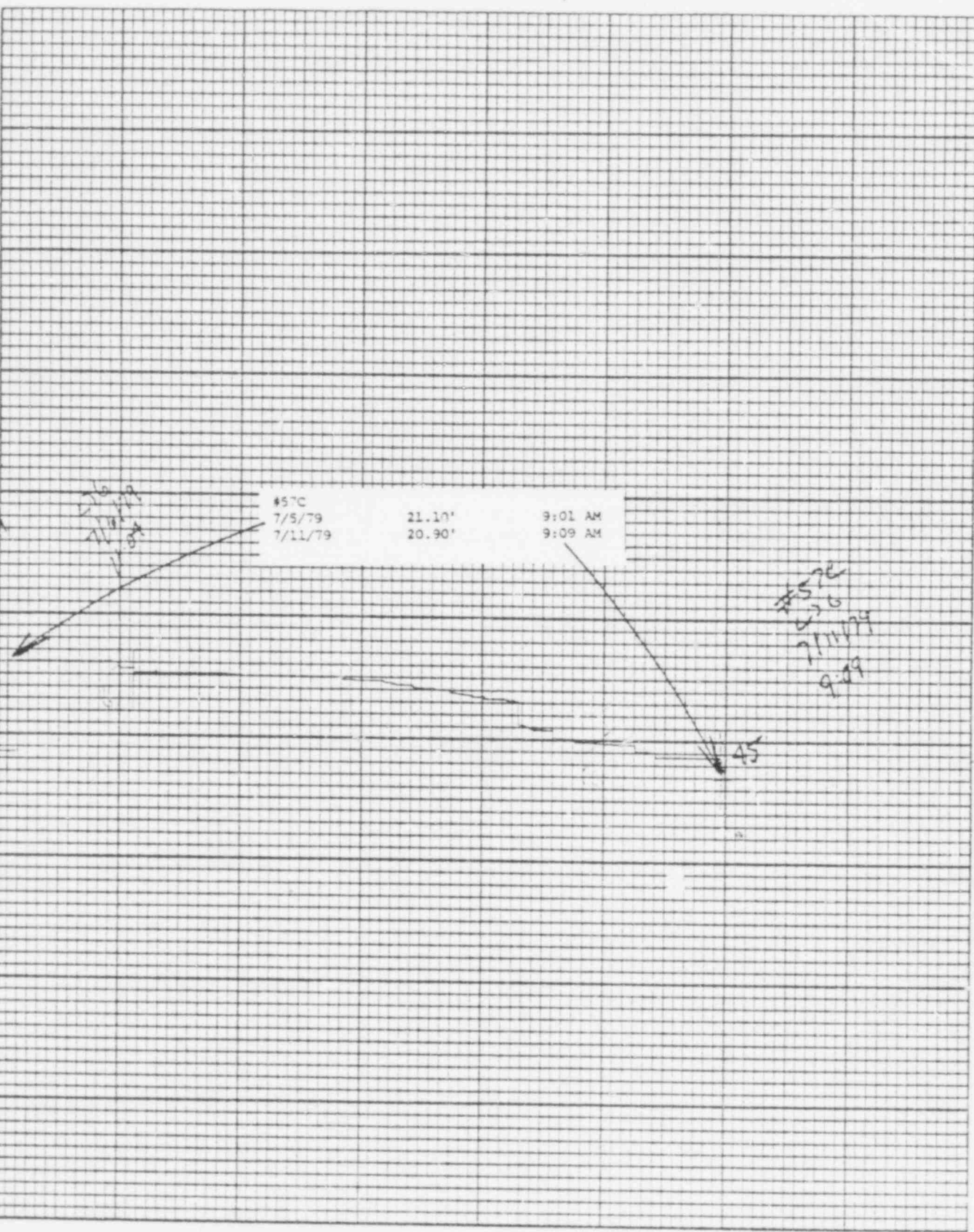


422 114

POOR ORIGINAL

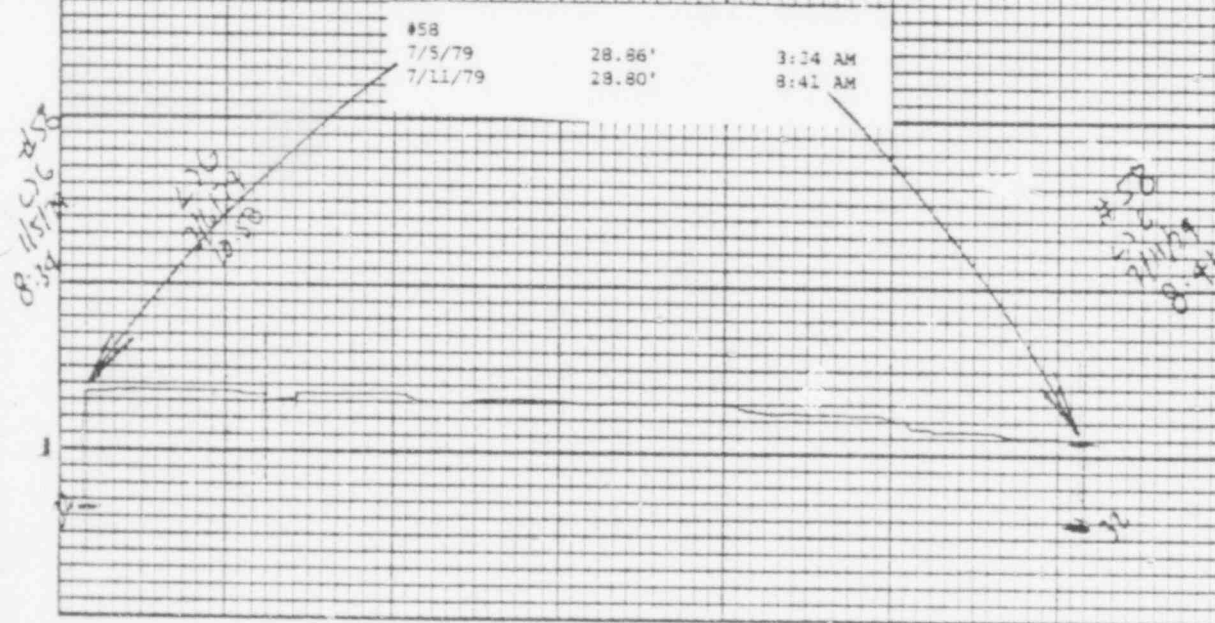


430001 & Stevens, Inc., Inc. 7/5/79 21.10' 20.90' 9:01 AM 9:09 AM



422 115

POOR ORIGINAL



422 116

POOR ORIGINAL



Printed in U.S.A.

Leupold & Stevens, Inc., Heaverfon, Ore.

Chart F-1



Stevens Water Level Recorder — Type F

91

#598

7/5/79

7/11/79

24.59'

24.75'

8:45 AM

8:45 AM

#598

7/5

7/11

91

422 117

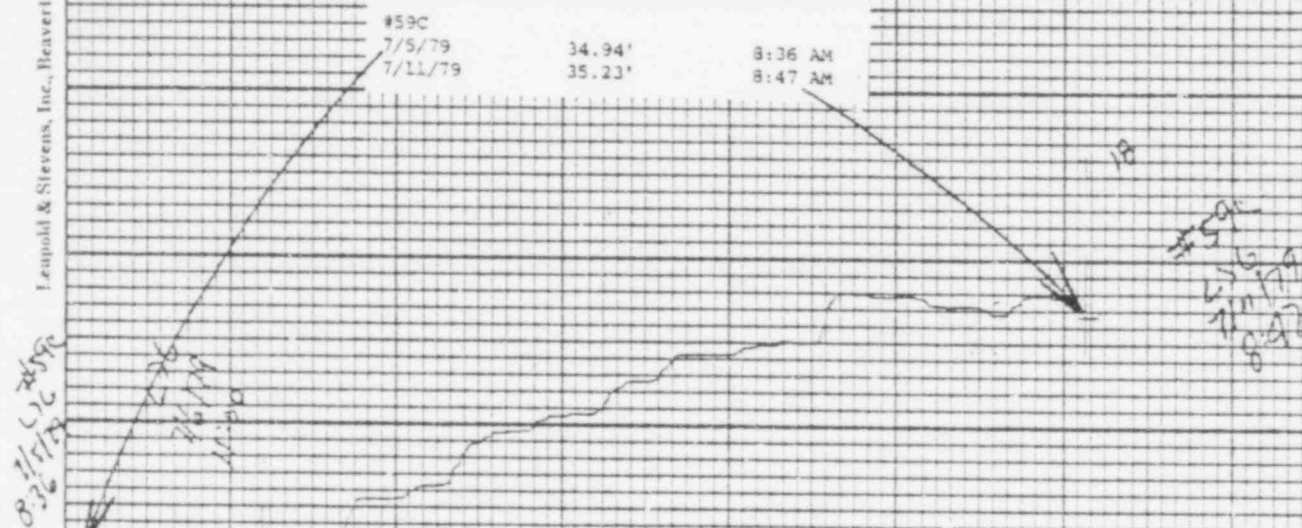
POOR ORIGINAL

Printed in U.S.A.

Leupold & Stevens, Inc., Beaverlton, Ore.

Chart P-1

Stevens Water Level Recorder — Type F



422 118

POOR ORIGINAL

BAILLY WELLS WITHOUT RECORDERS

7/11/79

<u>WELL #</u>	<u>WATER ELEVATION IN FEET</u>
62	33.13
65	27.87
67	23.41
72	11.09
73	11.45
74	14.77

DBY:lr  
7/12/79



POND LEVELS

<u>POND</u>	<u>7/11/79</u>
1	29.33'
2	30.54'
3	29.31'
4	24.29'
5	23.81'
6	33.31'
7	28.64'
8	DRY
9	28.51'
10	40.07'
11	40.15'
12	37.34'
13	37.92'

DBY:lr  
7/12/79

PNEUMATIC PRESSURE TRANSDUCERS

7/11/79

<u>TRANSDUCER</u>	<u>WATER ELEVATION IN FEET</u>
P-1	11.2
P-2	10.4
P-3	7.8
P-4	15.3
P-5	15.6
P-6	16.2

DBY:lr  
7/12/79

WATER METER READINGS

<u>DATE</u>	<u>TIME</u>	<u>METER READING (GALLONS)</u>	<u>INSTANTANECUS FLOW RATE (GPM)</u>
<u>Sump Pump Discharge</u>			
7/11/79	3:38 PM	278386000	234

Well Point Discharge

METER NOT IN SERVICE

WELL POINTS ON 7/7/79 4:00 PM to 7/9/79 8:00 AM

DBY:lr  
7/12/79

422 122