



Northern Indiana Public Service Company

Nuclear Staff
RR #3, Box 501
Chesterton, IN 46304
July 13, 1979

BAILLY GENERATING STATION N-1

Mr. Ronald Ballard
Environmental Projects Branch No. 1
Directorate of Licensing
U.S. Nuclear Regulatory Commission
Washington, D.C. 20545

RE: NORTHERN INDIANA PUBLIC SERVICE COMPANY
BAILLY GENERATING STATION NUCLEAR 1
DOCKET 50-367

Dear Mr. Ballard:

Enclosed herewith are ten (10) copies of the following:

1. Well Charts for June 27, 1979, - July 5, 1979.
2. Bailly Wells Without Recorders for July 5, 1979.
3. Pond Levels for July 5, 1979.
4. Pneumatic Pressure Transducers for July 5, 1979.
5. Water Meter Readings for July 5, 1979.
6. USGS Wells for July 5, 1979.

Sincerely,

R. J. Bohn
Manager, Nuclear Staff

DBY:lu

Enclosures

File: Ground Water Observation Monitoring Wells

359 122

0004
5 1/1

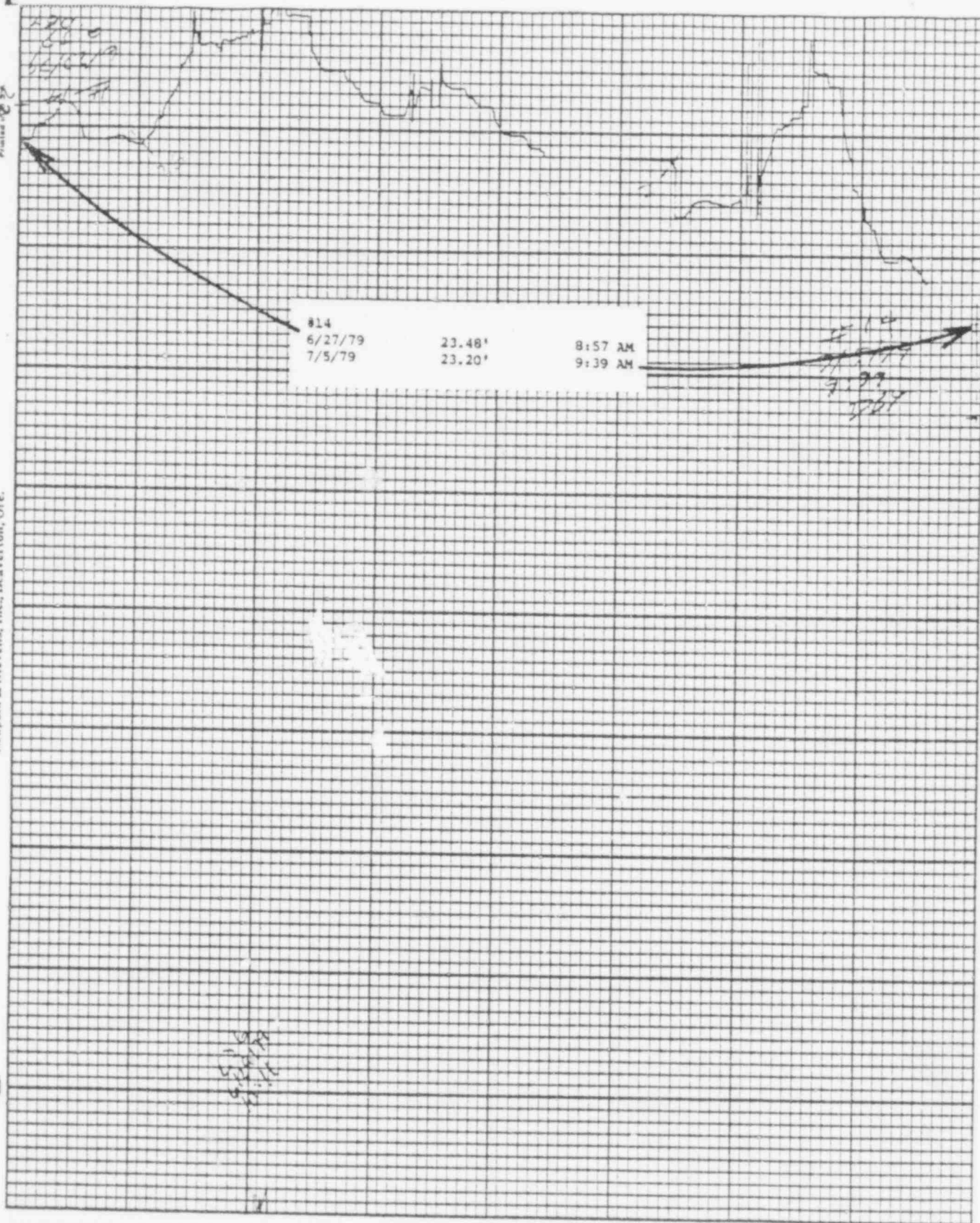
7907230566

Leupold & Stevens, Inc., Beaverton, Ore.

Printed on 3x5

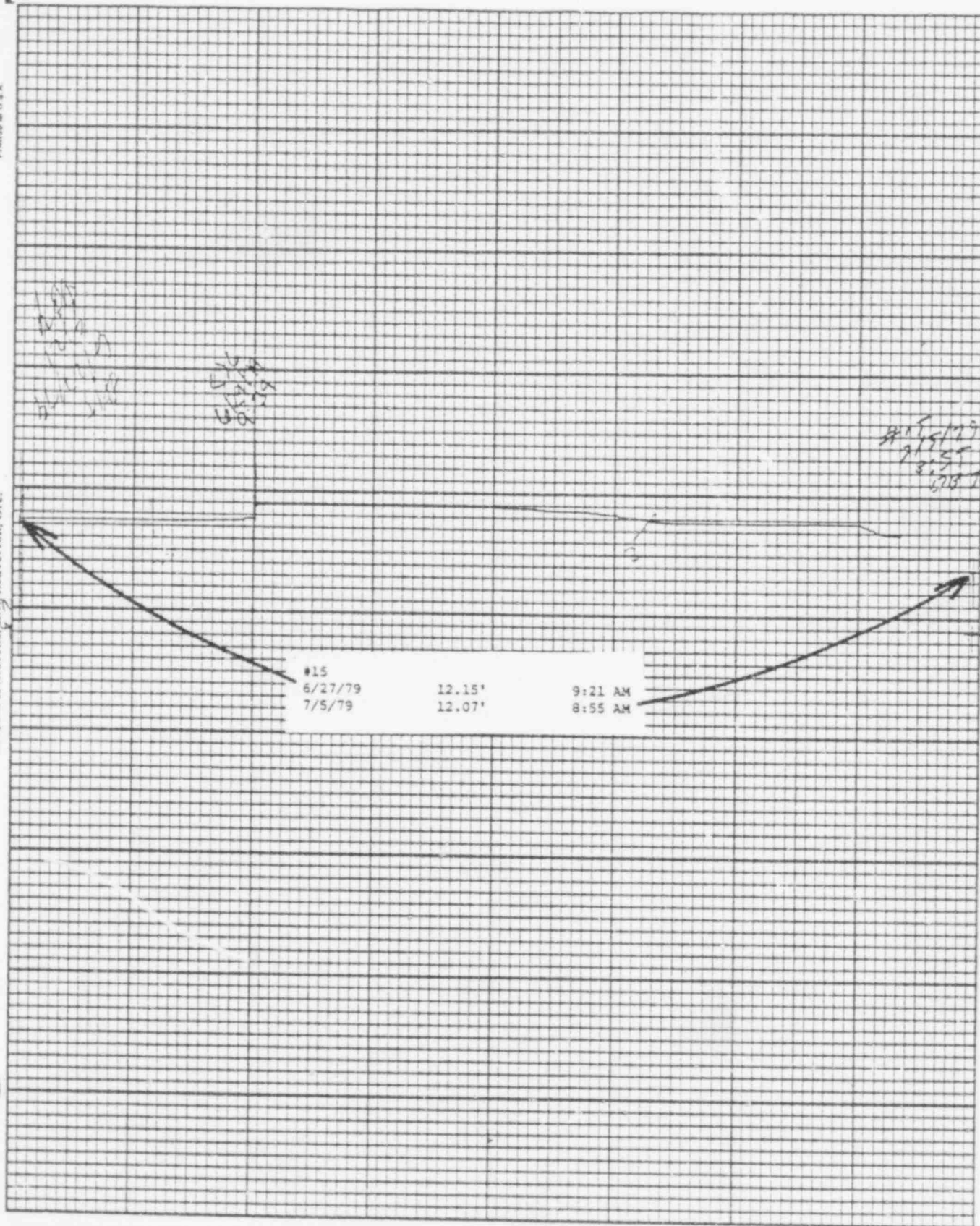
Chart F-1

Stevens Water Level Recorder — Type F



359 12

POOR ORIGINAL



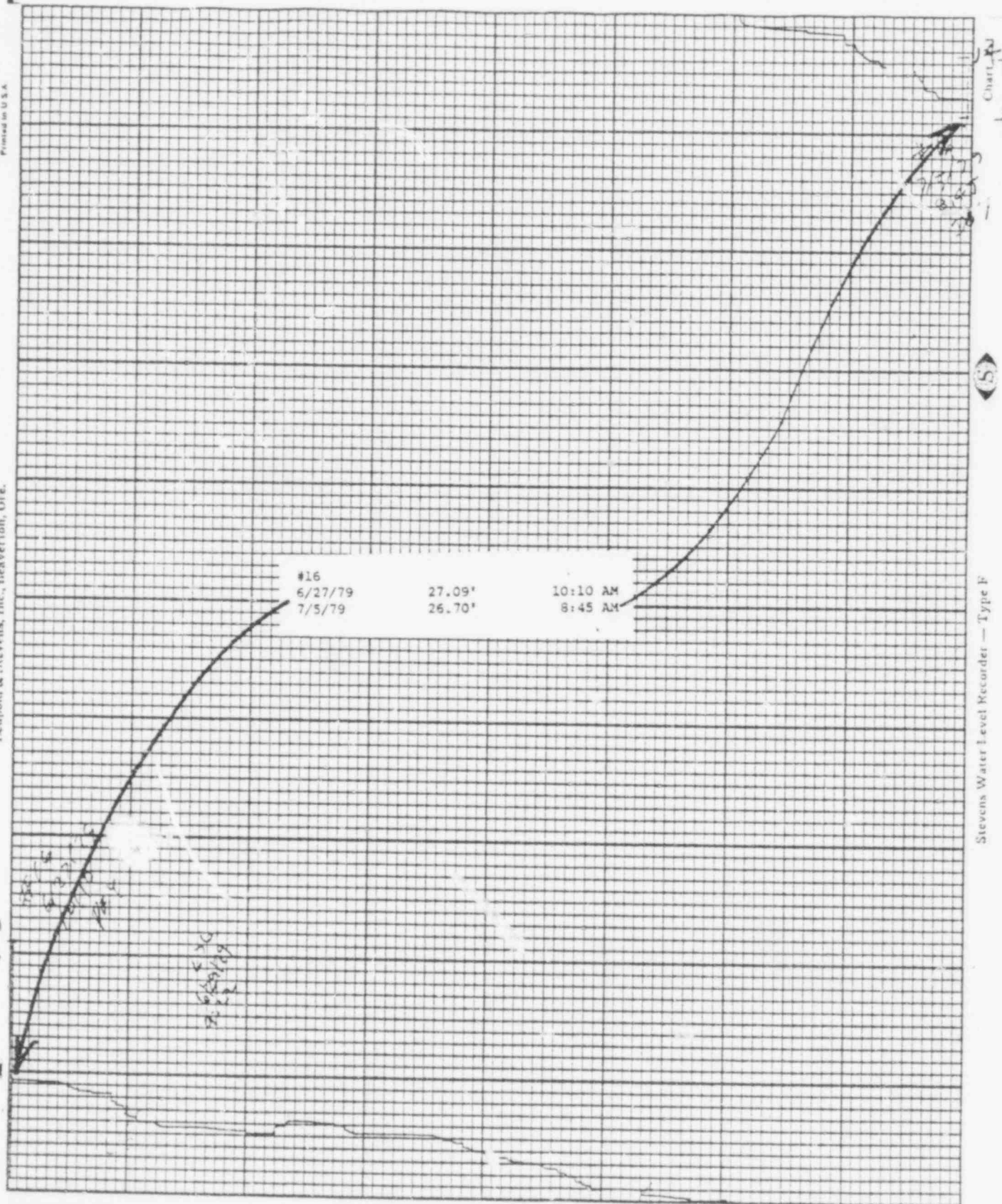
Stevens Water Level Recorder—Type F

~~359 124~~

POOR ORIGINAL

Printed in U.S.A.

Leupold & Stevens, Inc., Beaverlton, Ore.



359 125

POOR ORIGINAL

Printed in U.S.A.

Stevens Water Level Recorder — Type F

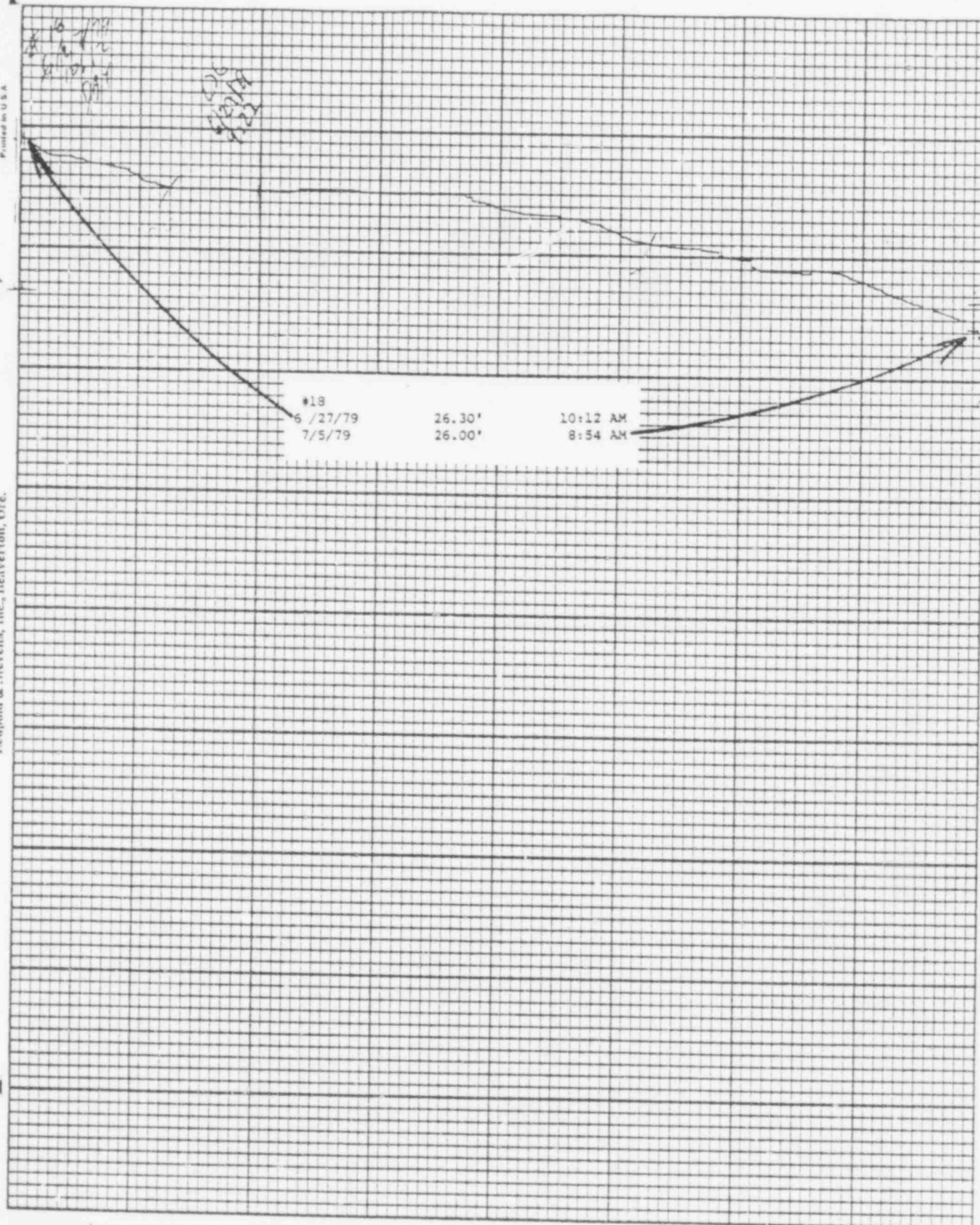


POOR ORIGINAL

Leupold & Stevens, Inc., Heaverton, Ore.

Chart W-1

Stevens Water Level Recorder — Type F



359 127

POOR ORIGINAL

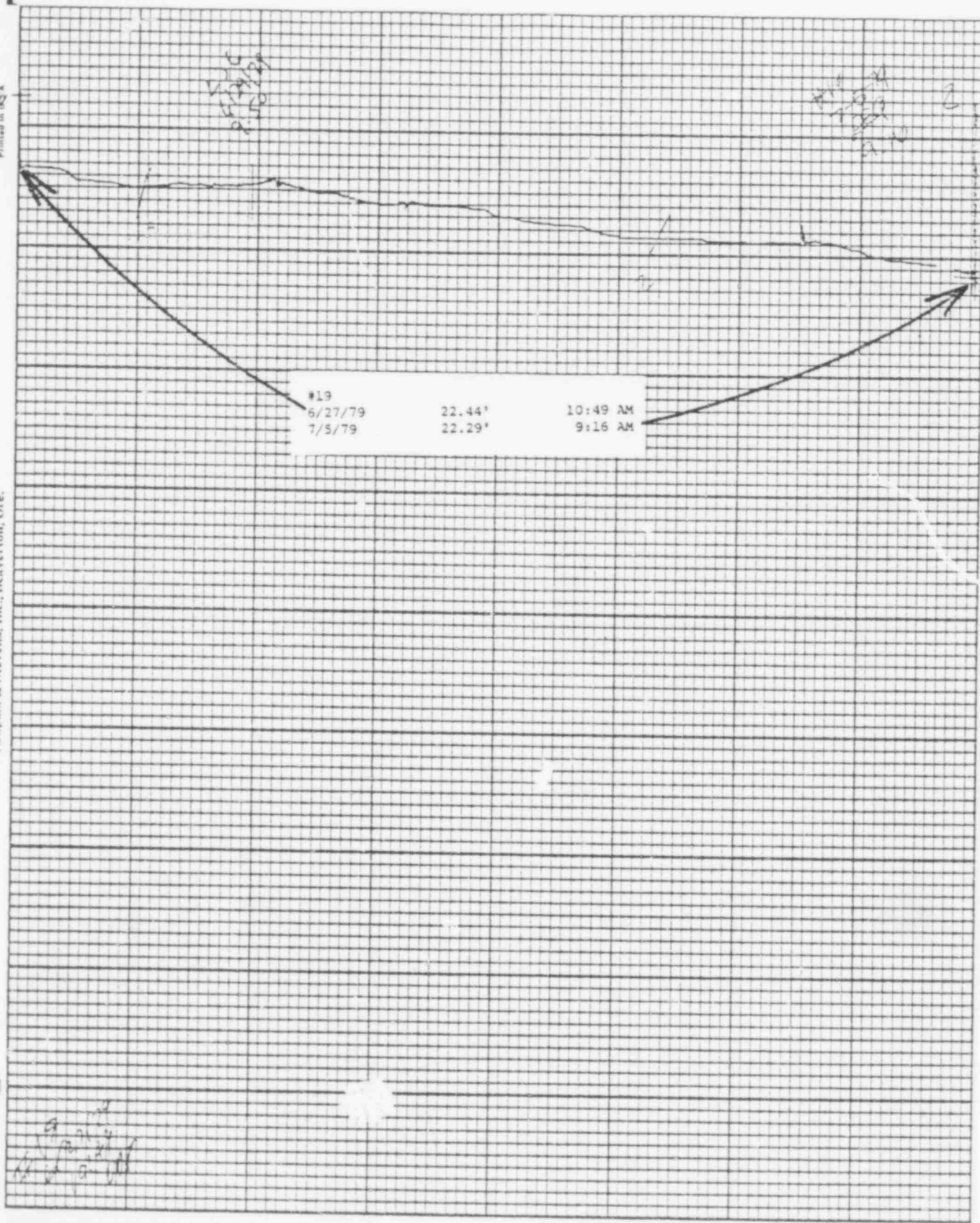
Printed in U.S.A.

Leupold & Stevens, Inc., Heaverton, Ore.

Chart P-1

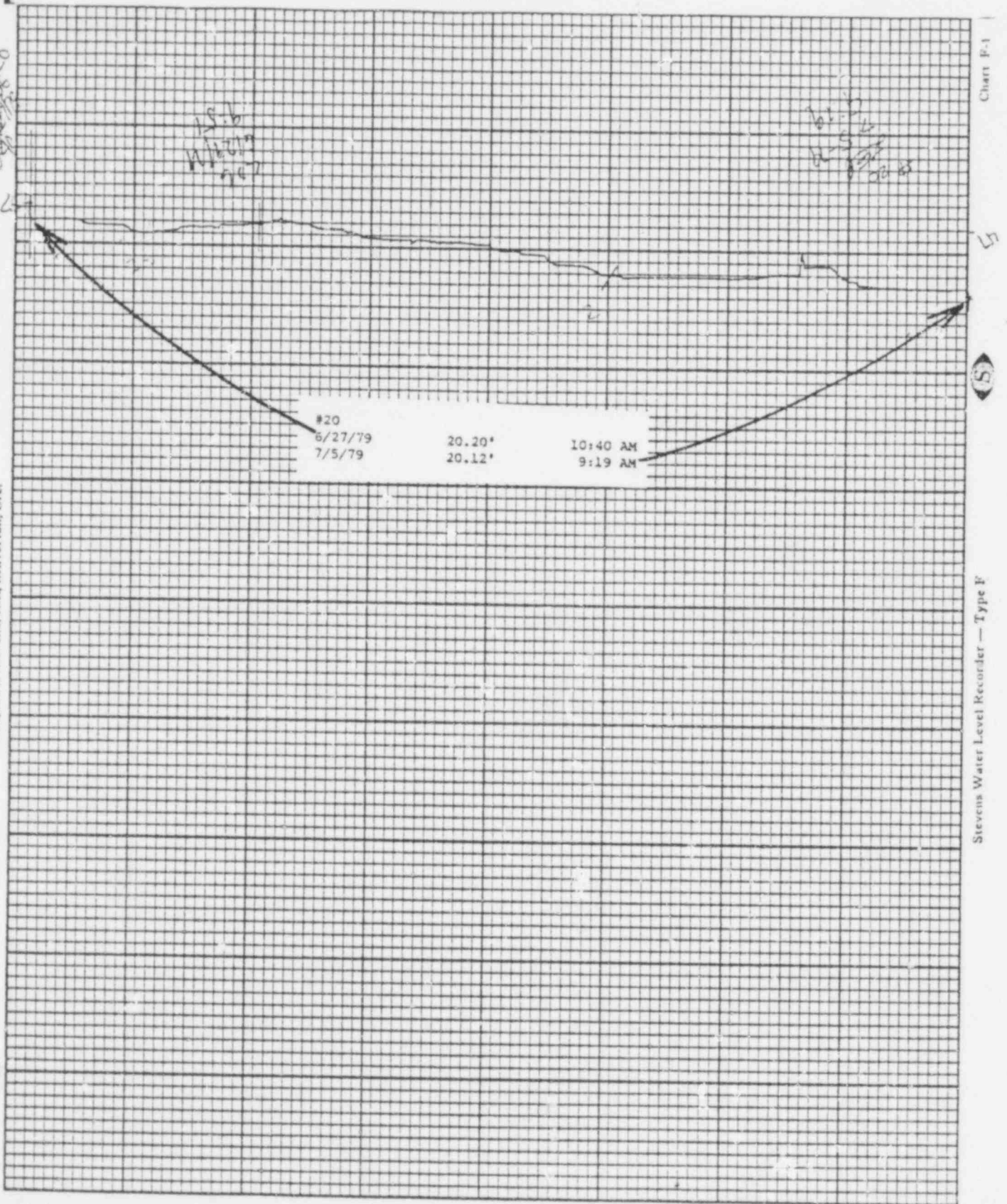
(S)

Stevens Water Level Recorder — Type F



359 128

POOR ORIGINAL



Penfold & Stevens, Inc., Beaverton, Ore.

Penfold & Stevens, Inc.

Chart F-1

Stevens Water Level Recorder — Type F

#518

6/27/79

7/5/79

21.02'

20.87'

10:31 AM

9:08 AM

6/27/79
9:46

359 130

POOR ORIGINAL

Printed in U.S.A.

50

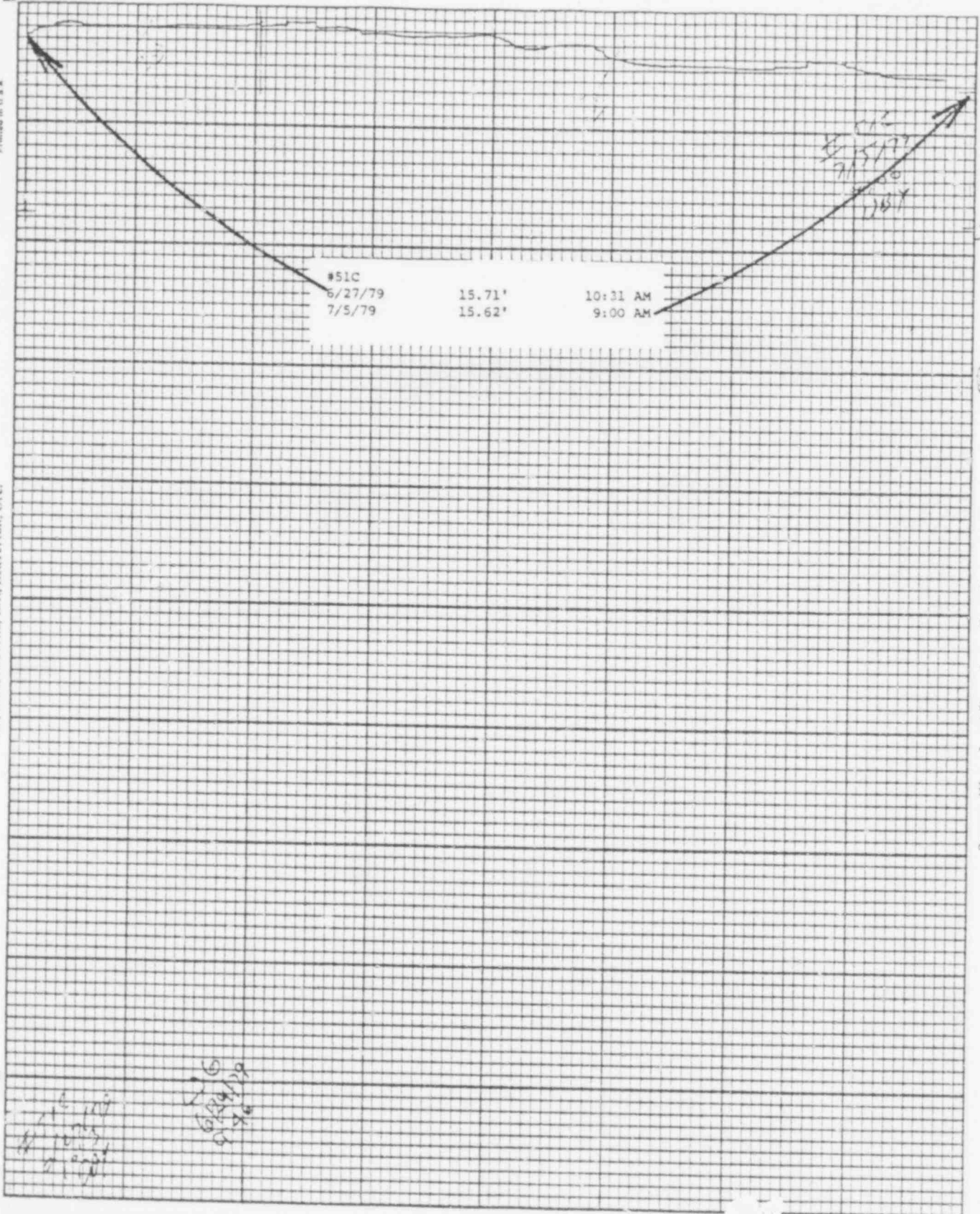
Leupold & Stevens, Inc., Beaverton, Ore.

Chart P-1

56



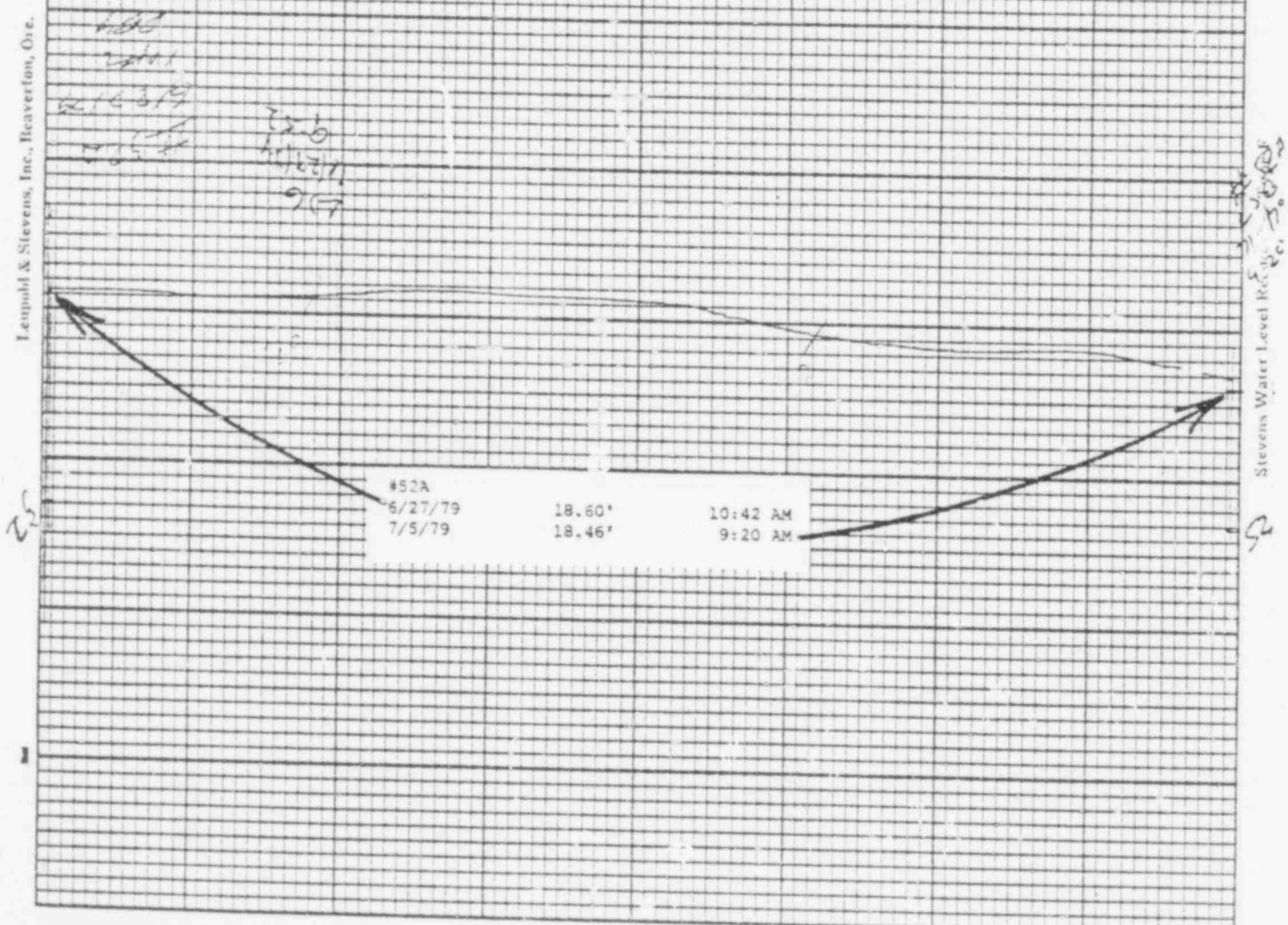
Stevens Water Level Recorder — Type F



359 131
POOR ORIGINAL

Temple & Stevens, Inc., Beaverfont, Ore.

Stevens Water Level Recorder



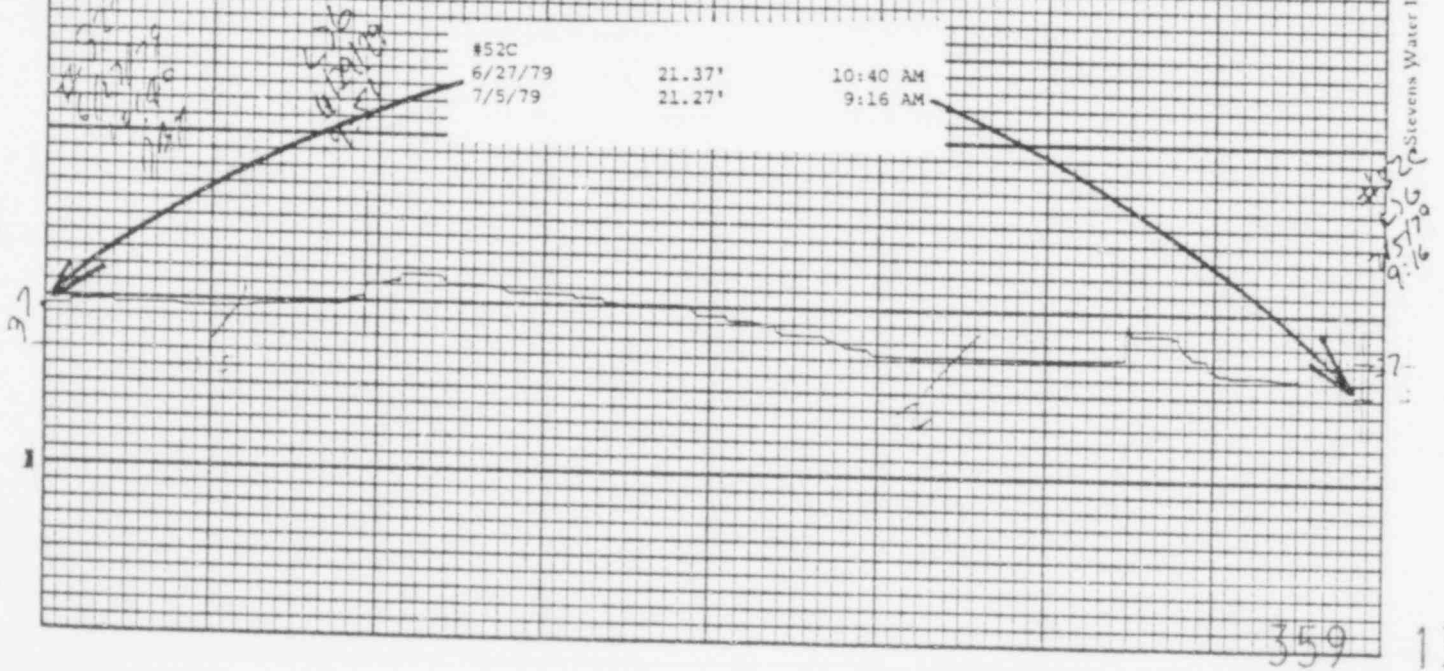
359 132

POOR ORIGINAL

St. John's



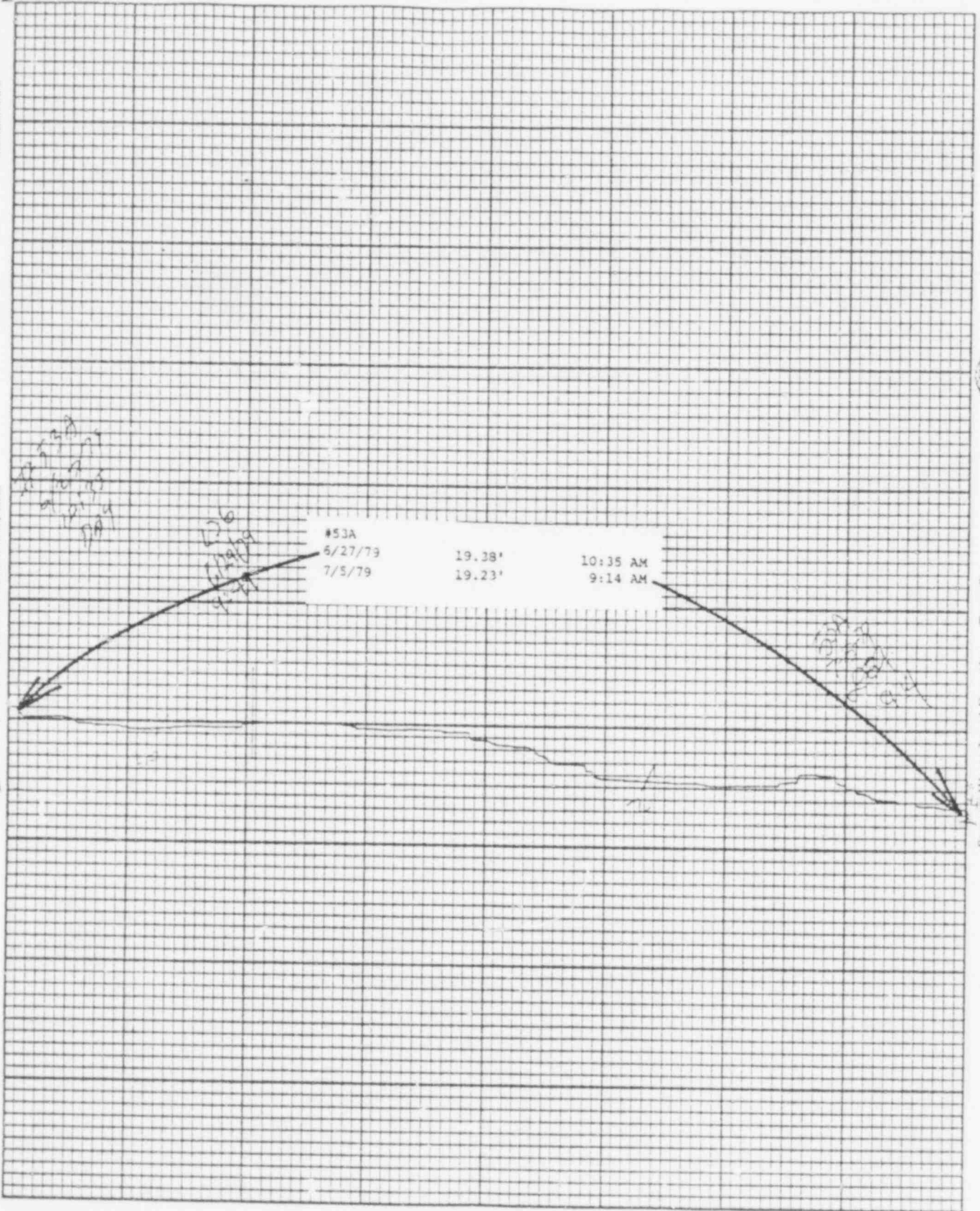
359 133
POOR ORIGINAL



POOR ORIGINAL

Leupold & Stevens, Inc., Beaverton, Ore.

Stevens Water Level Recorder — Type R

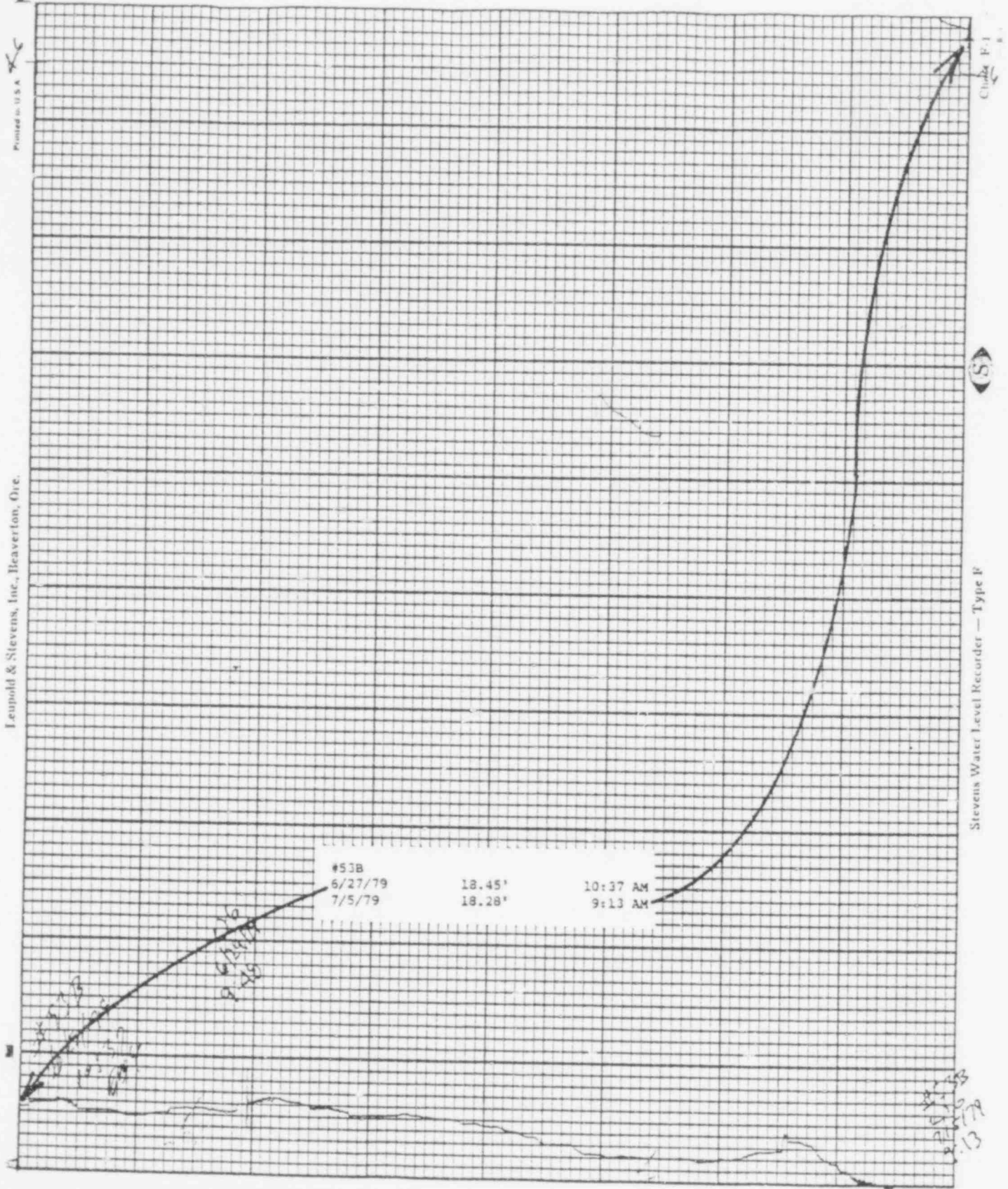


359 135

POOR ORIGINAL

Printed in U.S.A.

Leupold & Stevens, Inc., Beaverton, Ore.



359 136

POOR ORIGINAL

Leupold & Stevens, Inc., Beaverton, Ore.

10/10/79 10:16 AM

10/16
6/13/79
9:07

10/16
10:16 AM
10:16 AM

Chart F.1

#53C		
6/27/79	19.14'	10:36 AM
7/5/79	19.01'	9:12 AM

Stevens Water Level Recorder — Type F

POOR ORIGINAL

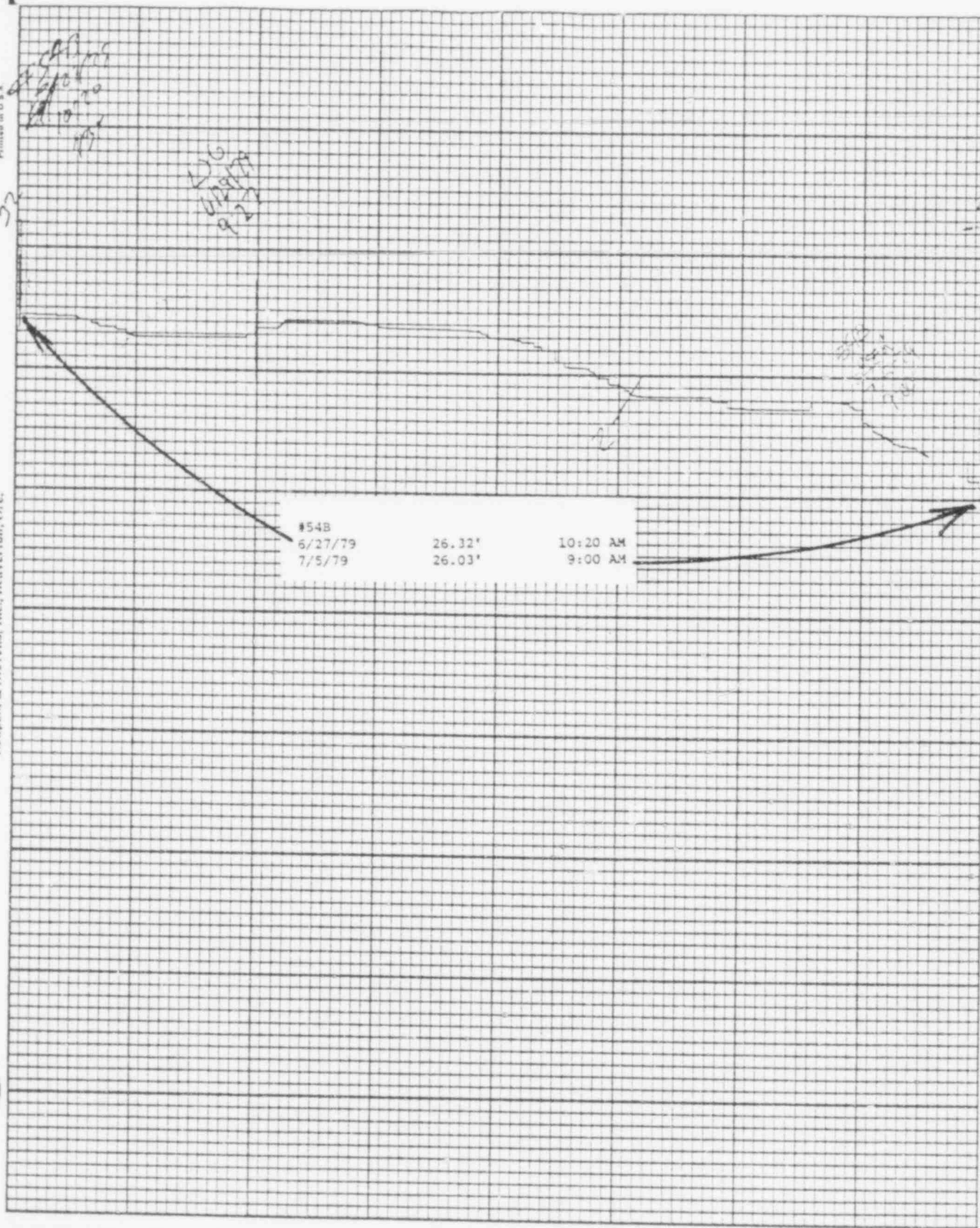
359 137

Printed in U.S.A.

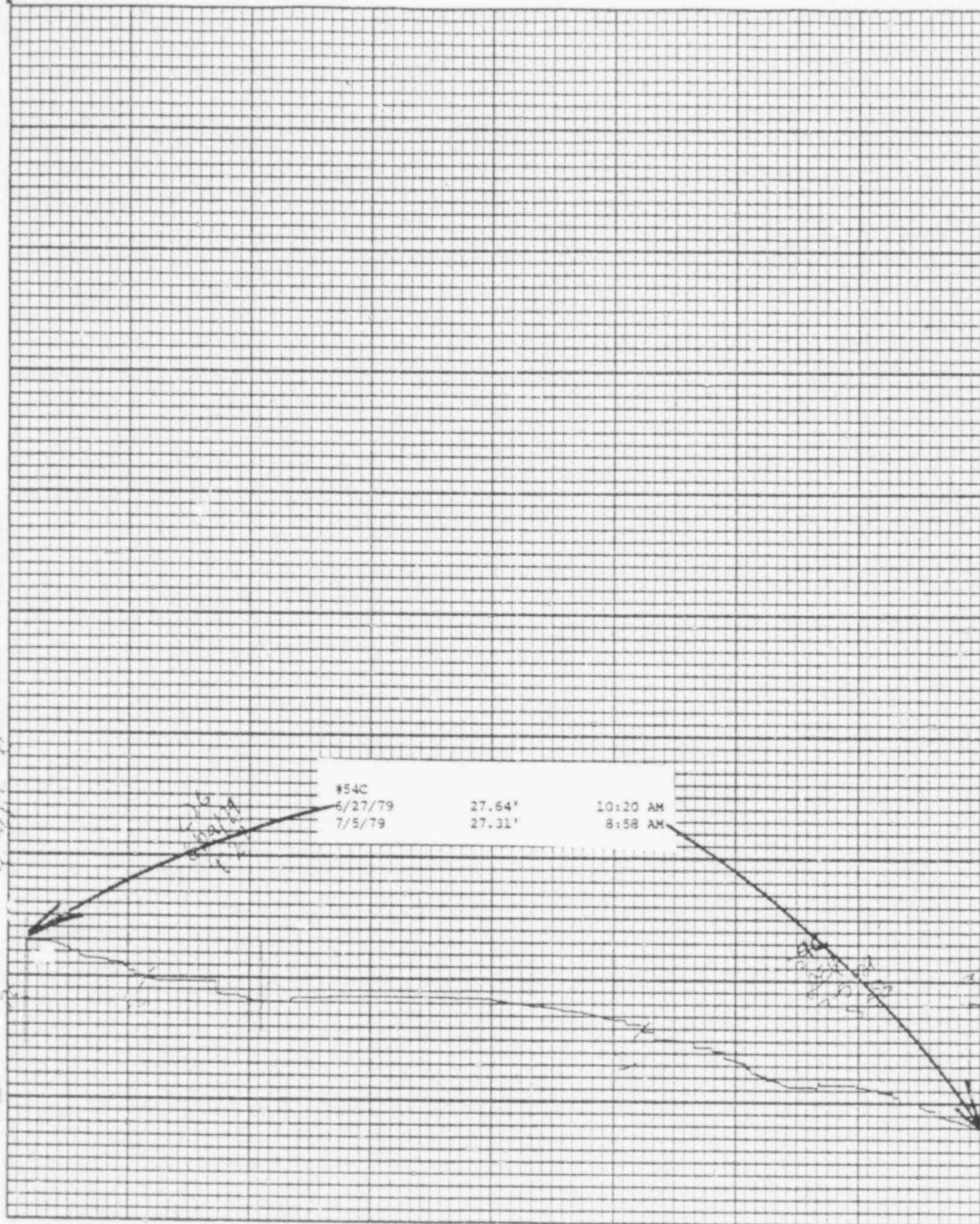
Leupold & Stevens, Inc., Beaverlton, Ore.

Chart F-1

Stevens Water Level Recorder — Type F



POOR ORIGINAL



359 139

POOR ORIGINAL

6/27/79

Leupold & Stevens, Inc., Waverly, Ore.

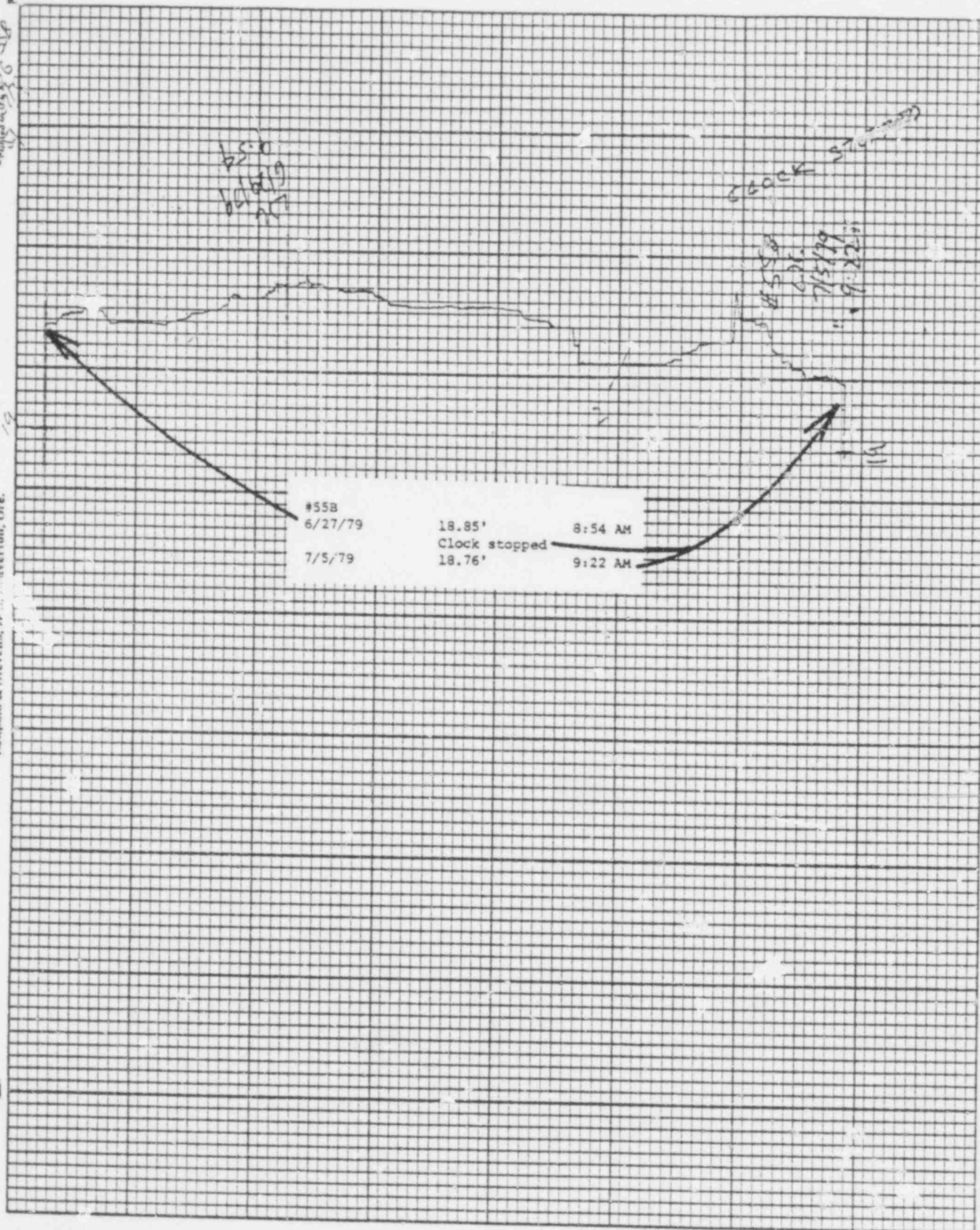
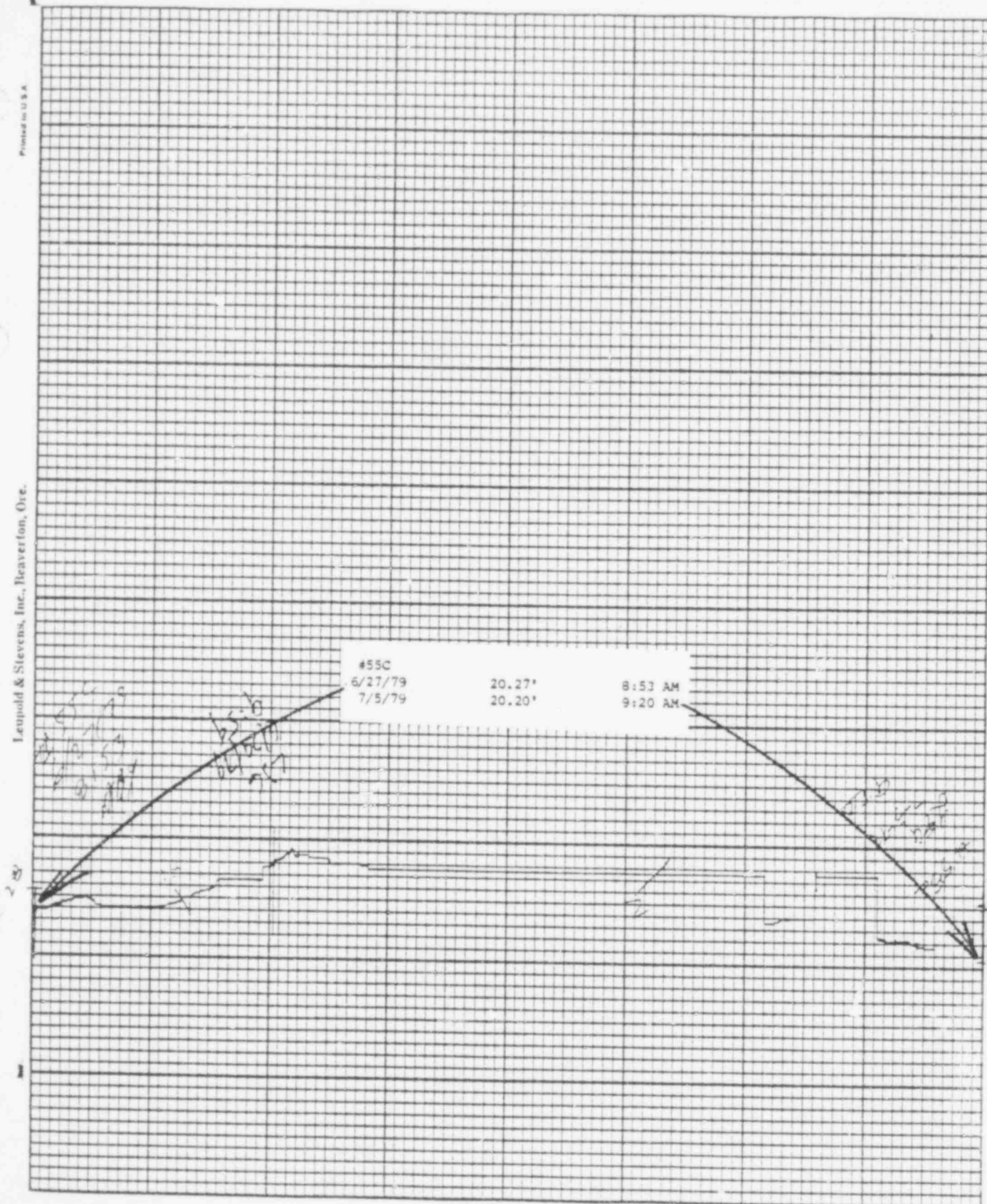


Chart F-1

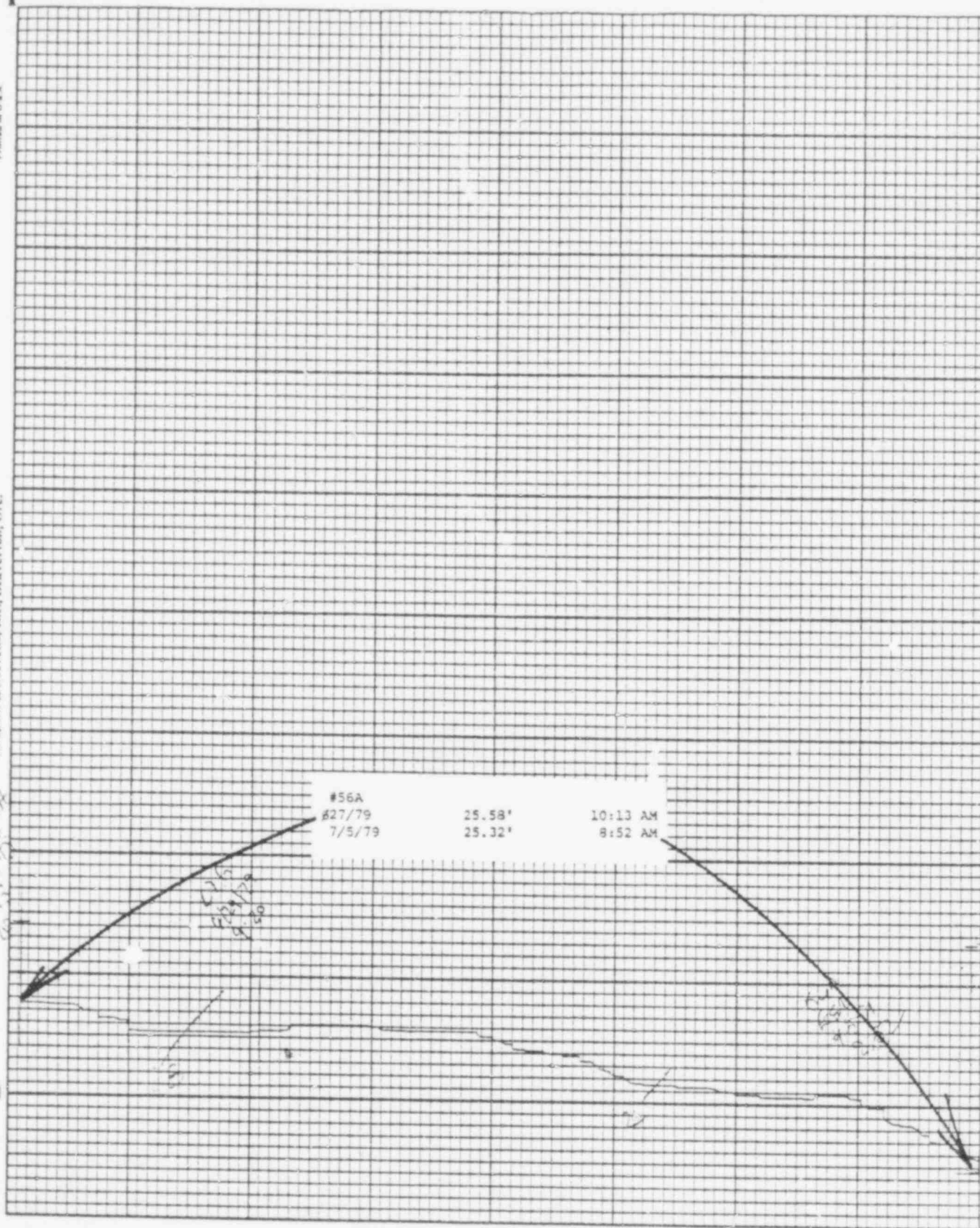
Stevens Water Level Recorder — Type R

359 140

POOR ORIGINAL



359 141
POOR ORIGINAL



-359. 142

POOR ORIGINAL

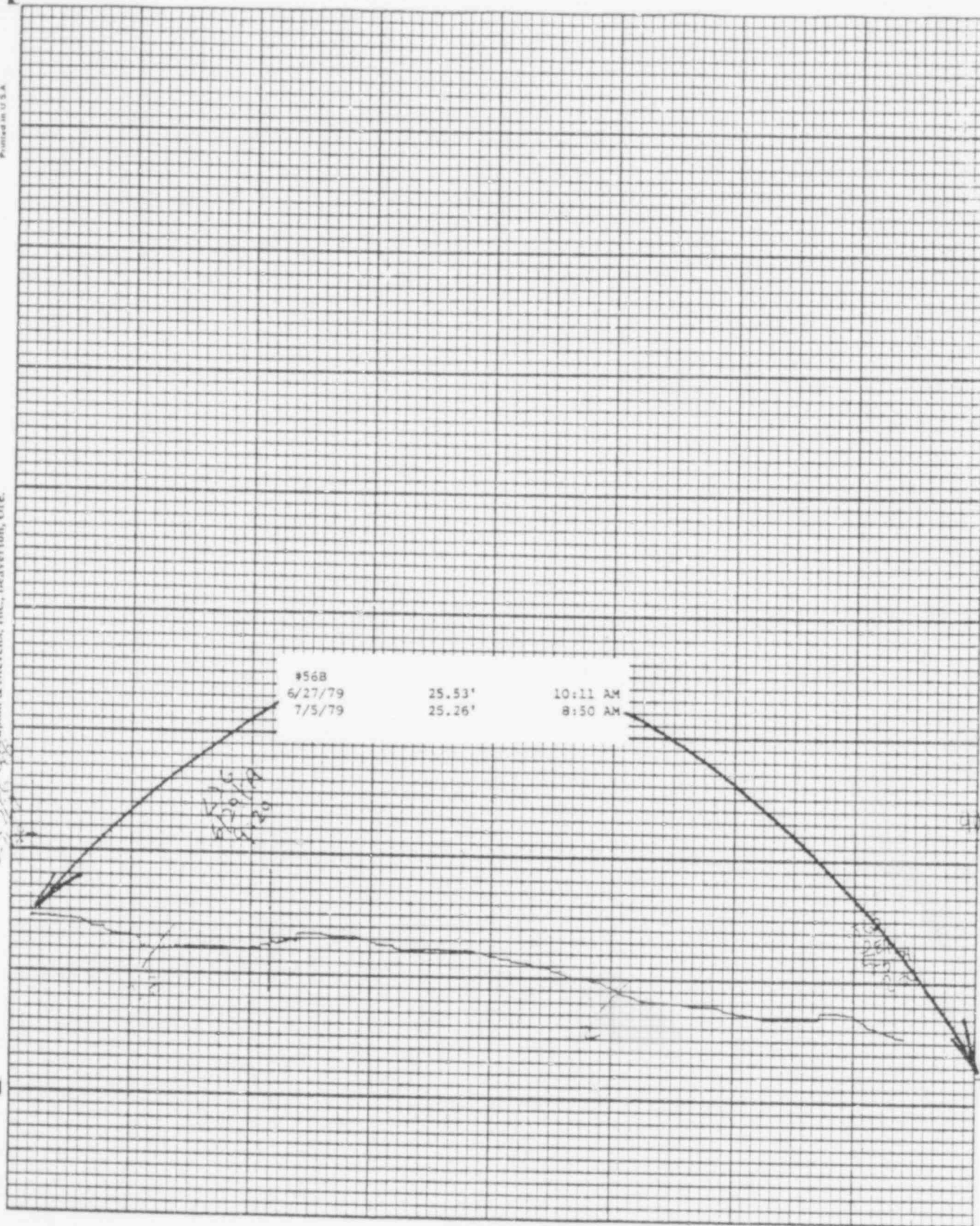
Printed in U.S.A.

Chart F-1



Stevens Water Level Recorder — Type F

Leupold & Stevens, Inc., Beaverlton, Ore.



359 143

POOR ORIGINAL

Printed in U.S.A.

Chart P-1

Leupold & Stevens, Inc., Stevens, Wis.

S

Leupold & Stevens, Inc., Stevens, Wis.

91

#56C		
6/27/79	25.76'	10:14 AM
7/5/79	25.46'	8:50 AM

CLG
6/27/79
7/5/79

359 144
POOR ORIGINAL

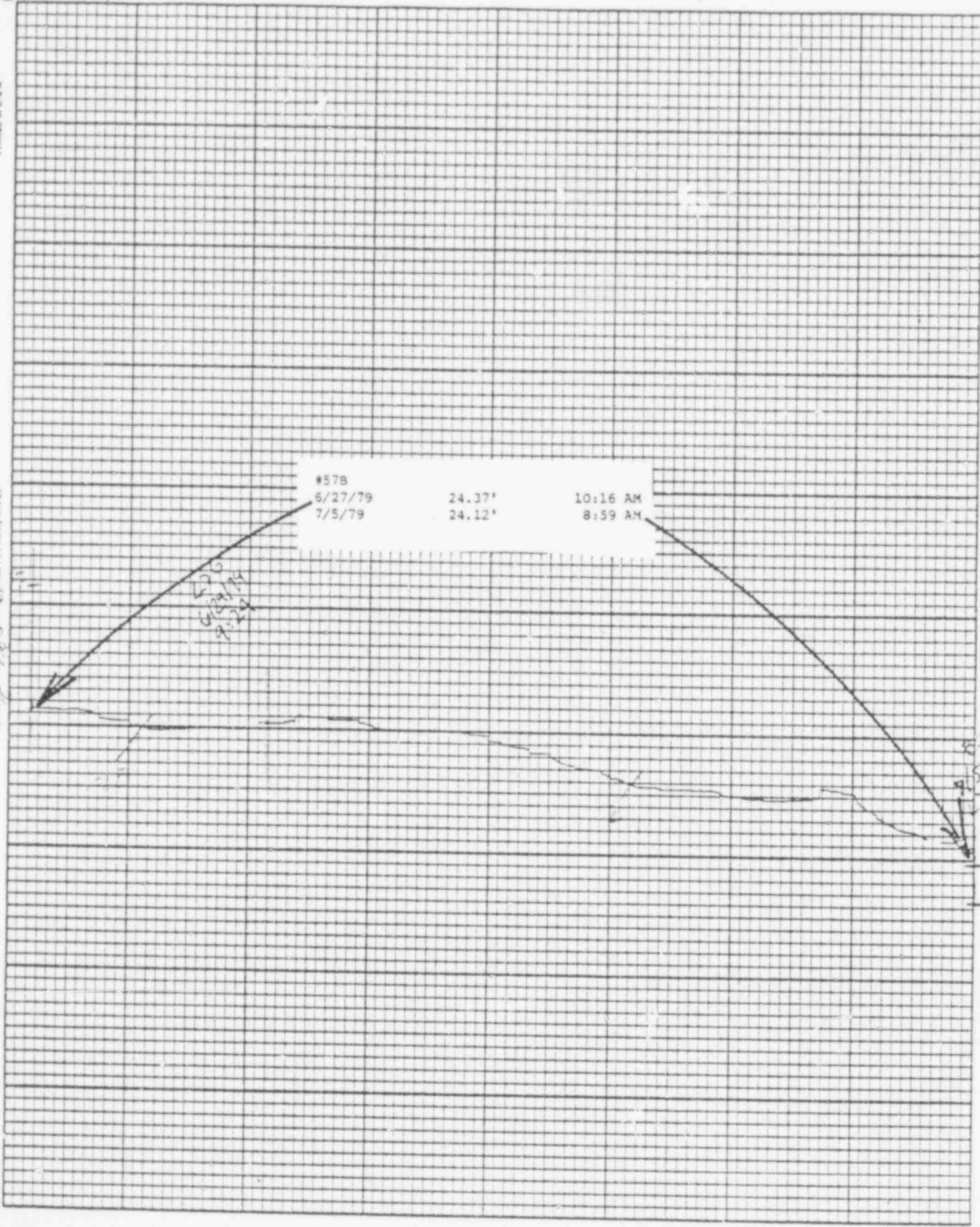
Printed in U.S.A.

Penfold & Sloggy, Inc., Heaverton, O.e.

Chart F-1



Sloggy's Water Level Recorder - Type F



#578		
6/27/79	24.37'	10:16 AM
7/5/79	24.12'	8:59 AM

POOR ORIGINAL

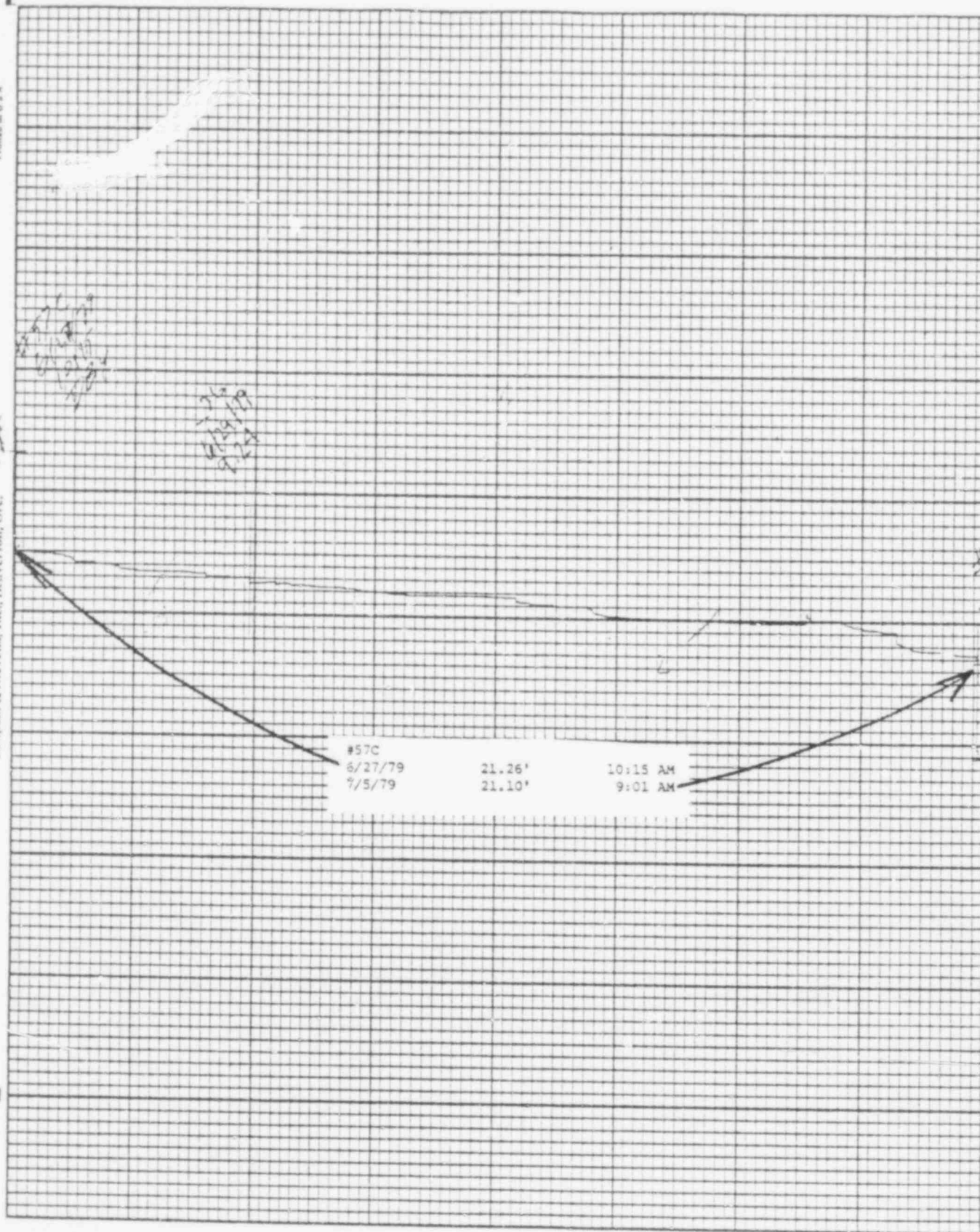
Printed in U.S.A.

Leupold & Stevens, Inc., Beaverlton, Ore.

Chart P-1



Stevens Water Level Recorder - 8101-757



359 146

POOR ORIGINAL

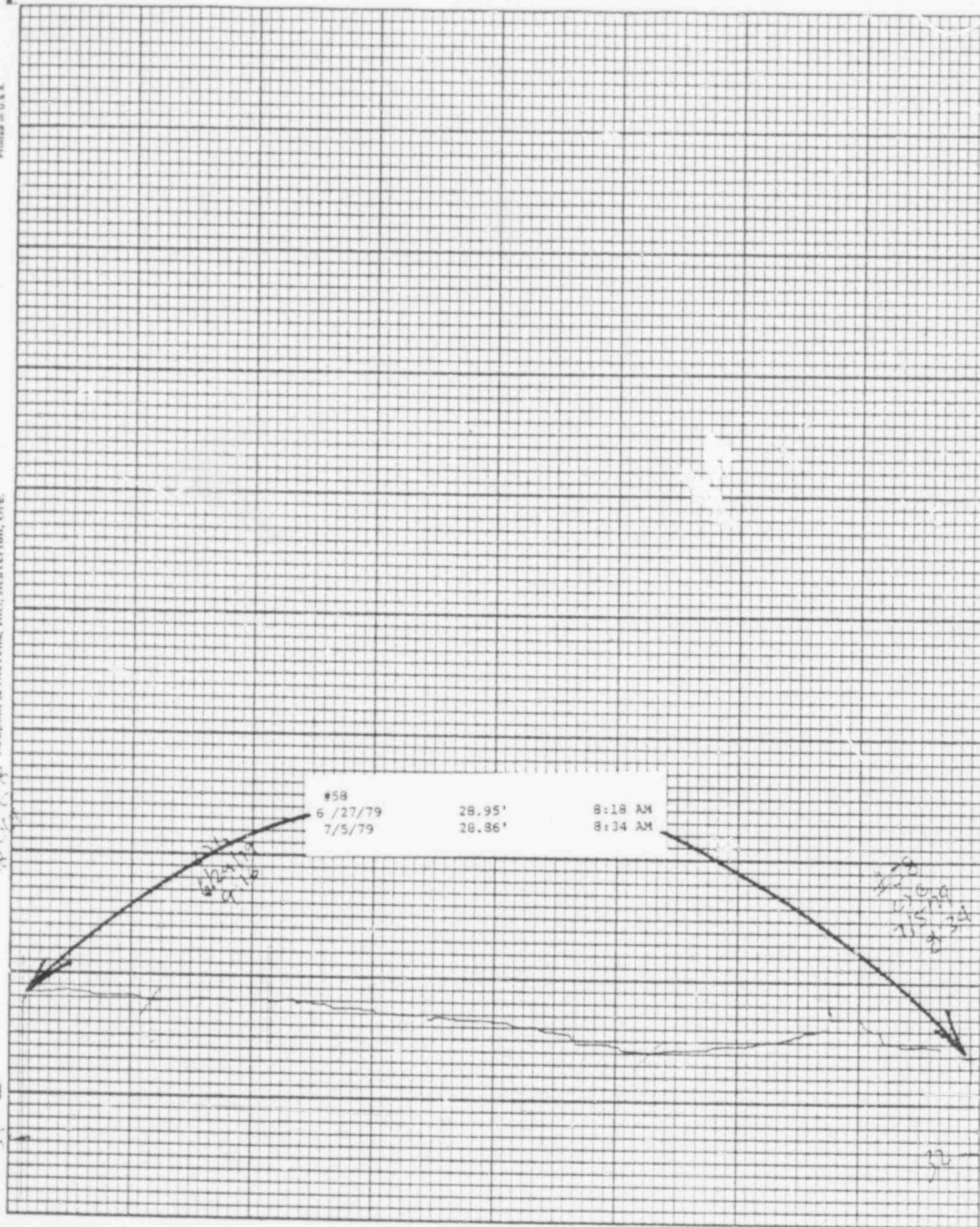
Printed in U.S.A.

Chart F-1



Stevens Water Level Recorder — Type F

Leupold & Stevens, Inc., Beaverlton, Ore.



359 147

POOR ORIGINAL

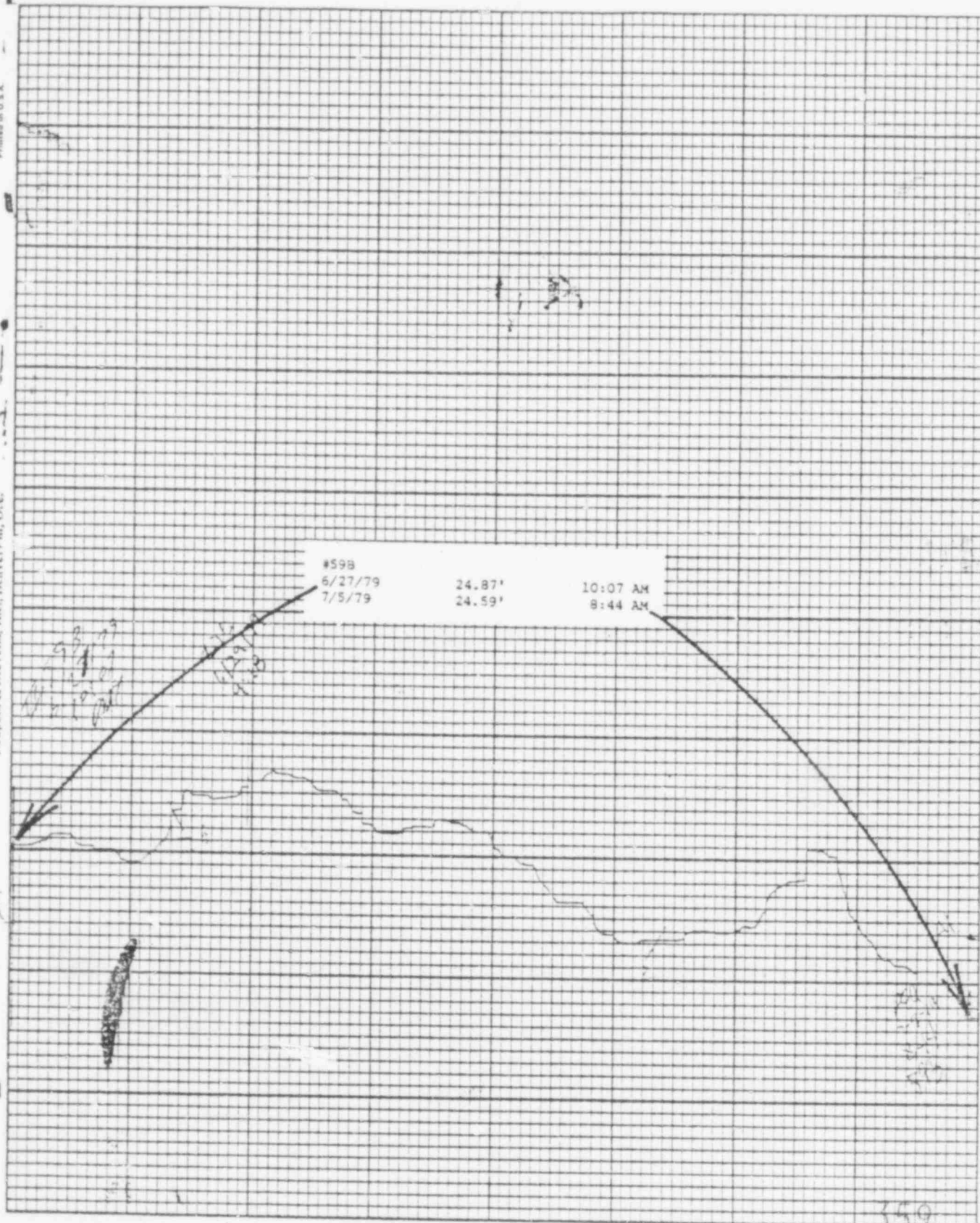
Printed in U.S.A.

Leupold & Stevens, Inc., Beaver Dam, Wis.

Chart P-1



Stevens Water Level Recorder — Type F



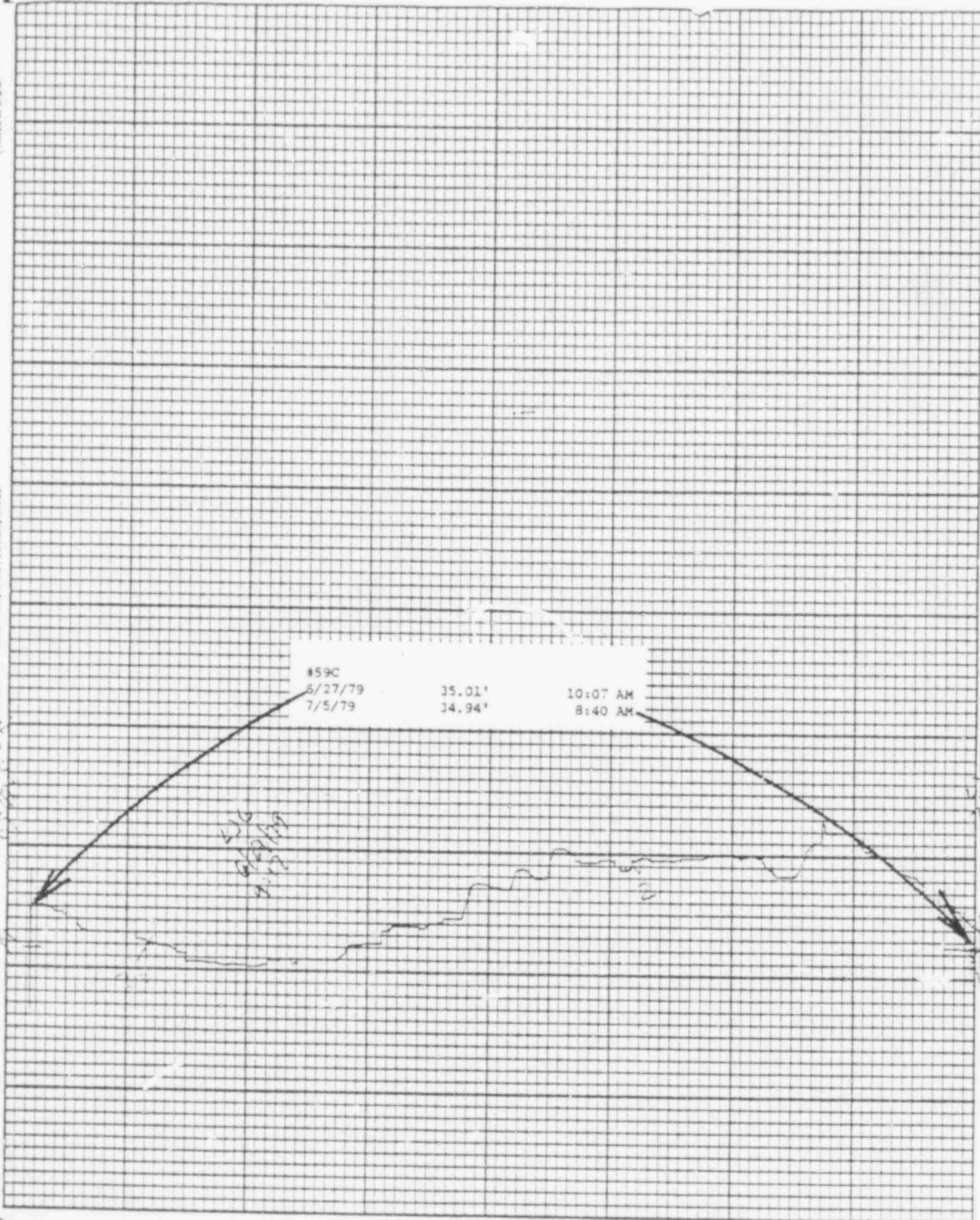
359 148

POOR ORIGINAL

Printed in U.S.A.

Chart P-1

W. H. C. Geygold & Stevens, Inc., Heaverton, Ore.



Level Recorder — Type K

POOR ORIGINAL

359 149

BAILLY WELLS WITHOUT RECORDERS

7/5/79

<u>WELL #</u>	<u>WATER ELEVATION IN FEET</u>
62	33.29
65	28.02
67	23.65
72	11.07
73	11.45
74	14.81

DBY:lr
7/9/79

POND LEVELS

<u>POND</u>	<u>7/5/79</u>
1	29.56
2	30.56
3	29.64
4	24.34
5	23.98
6	33.29
7	28.71
8	DRY
9	28.52
10	39.58
11	38.80
12	36.18
13	37.55

DBY:lr
7/9/79

PNEUMATIC PRESSURE TRANSDUCERS

7/5/79

<u>TRANSDUCER</u>	<u>WATER ELEVATION IN FEET</u>
P-1	11.6
P-2	10.2
P-3	8.3
P-4	14.1
P-5	15.1
P-6	16.0

DBY:lr
7/9/79

WATER METER READINGS

<u>DATE</u>	<u>TIME</u>	<u>METER READING (GALLONS)</u>	<u>INSTANTANEOUS FLOW RATE (GPM)</u>
-------------	-------------	--	--

Sump Pump Discharge

7/5/79	3:39 PM	276369000	242
--------	---------	-----------	-----

Well Point Discharge

SYSTEM NOT IN USE

DBY:lr
7/9/79

USGS WELLS
(ELEVATION IN FEET ABOVE STATION DATUM)

7/5/79

<u>WELL</u>	<u>WATER LEVEL</u>
19	25.16'
20	NOT IN SERVICE
21	30.16'
22	29.93'
23	30.00'
101	23.23'
D-1	27.95'
D-2	24.28'
D-3	30.44'
G-1	36.48'
G-2	33.09'
G-3	28.78'
G-4	31.80'
G-5	33.74'
G-6	31.65'

DBY:lr
7/9/79