



## Northern Indiana Public Service Company

Nuclear Staff  
RR # 3, Box 501  
Chesterton, IN 46304  
August 3, 1979

BAILLY GENERATING STATION N-1

Mr. Ronald Ballard  
Environmental Projects Branch No.1  
Directorate of Licensing  
U.S. Nuclear Regulatory Commission  
Washington, D.C. 20545

RE: NORTHERN INDIANA PUBLIC SERVICE COMPANY  
BAILLY GENERATING STATION NUCLEAR 1  
DOCKET 50-367

Dear Mr. Ballard:

Enclosed herewith are ten (10) copies of the following:

1. Well Charts for July 18, through July 25, 1979
2. Bailly Wells Without Recorders for July 25, 1979
3. Pond Levels for July 25, 1979
4. Pneumatic Pressure Transducers for July 25, 1979
5. Water Meter Readings for July 25, 1979

Sincerely,

R. J. Bohn  
Manager, Nuclear Staff

for RJE

(K) ml  
DBY:lu

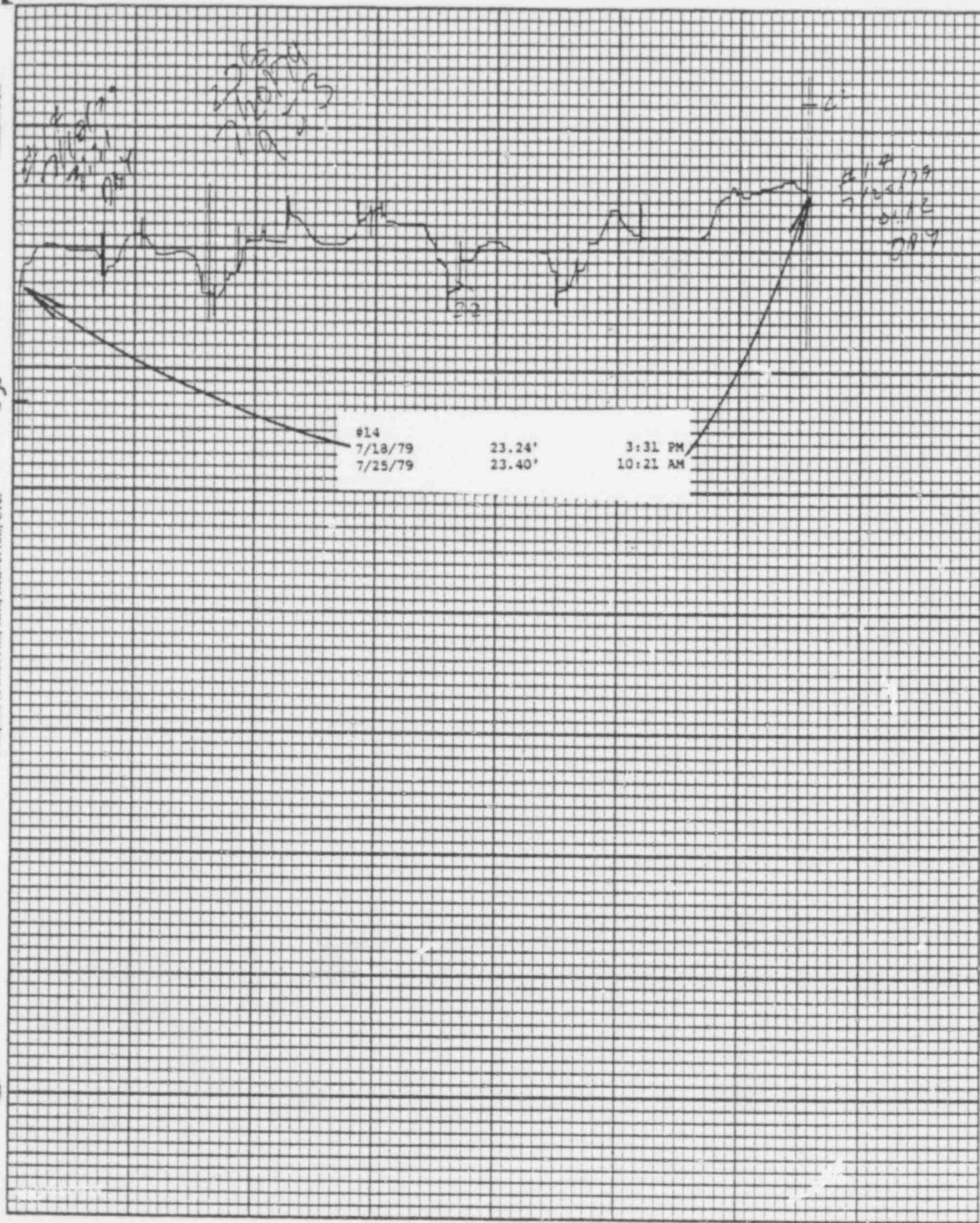
Enclosures

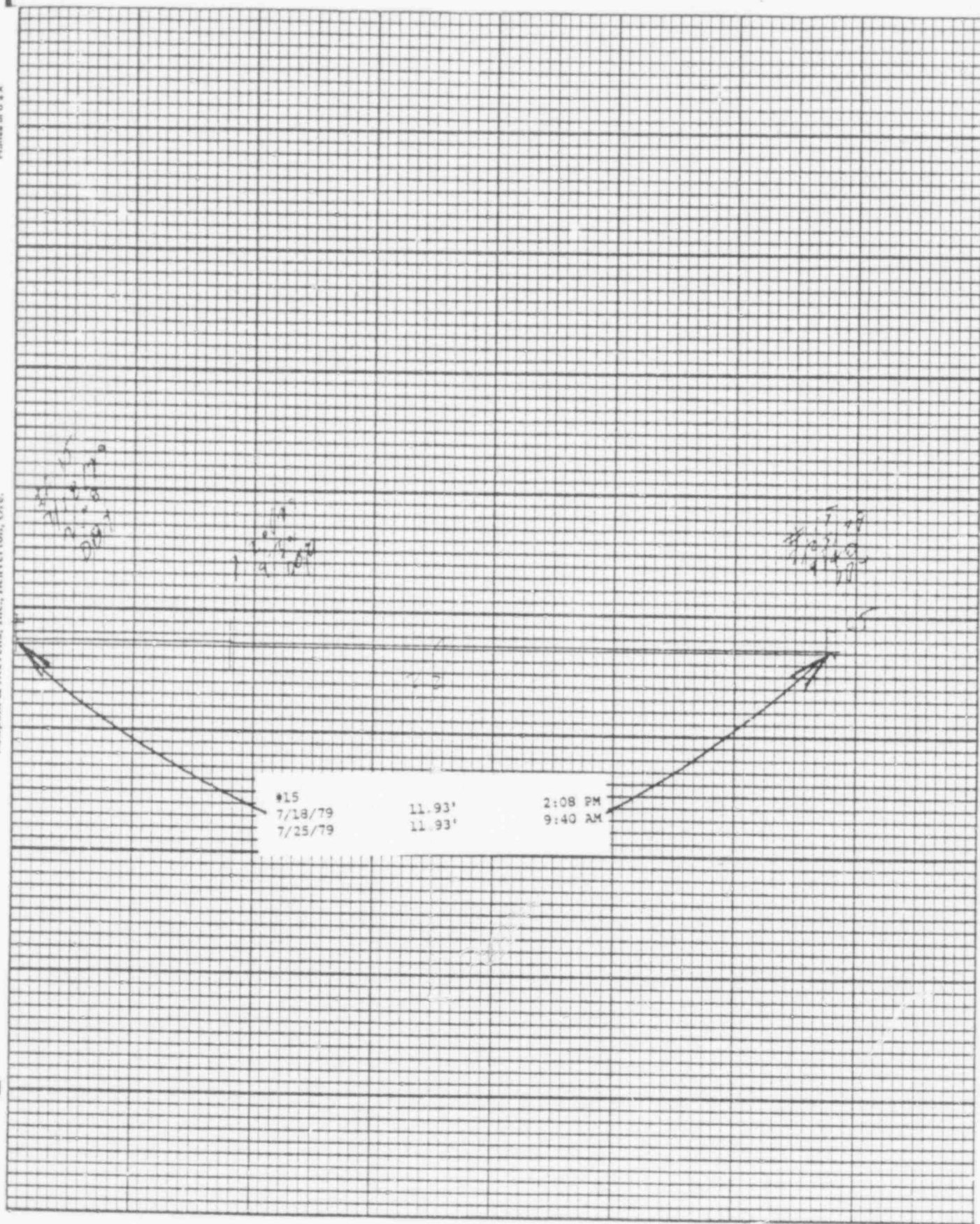
File: Ground Water Observation Monitoring Wells

DOCK  
EST  
11

626 257

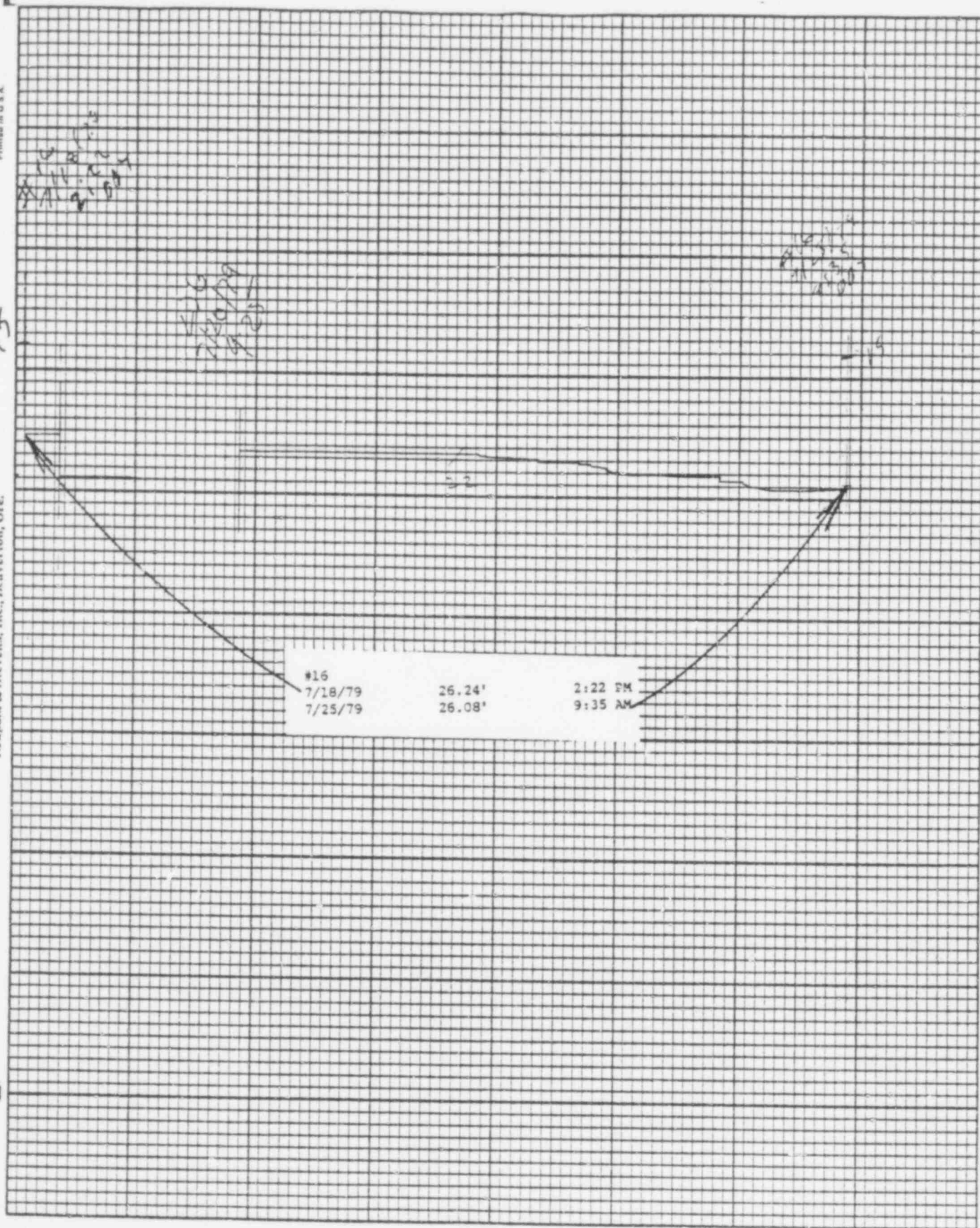
7908140491 4





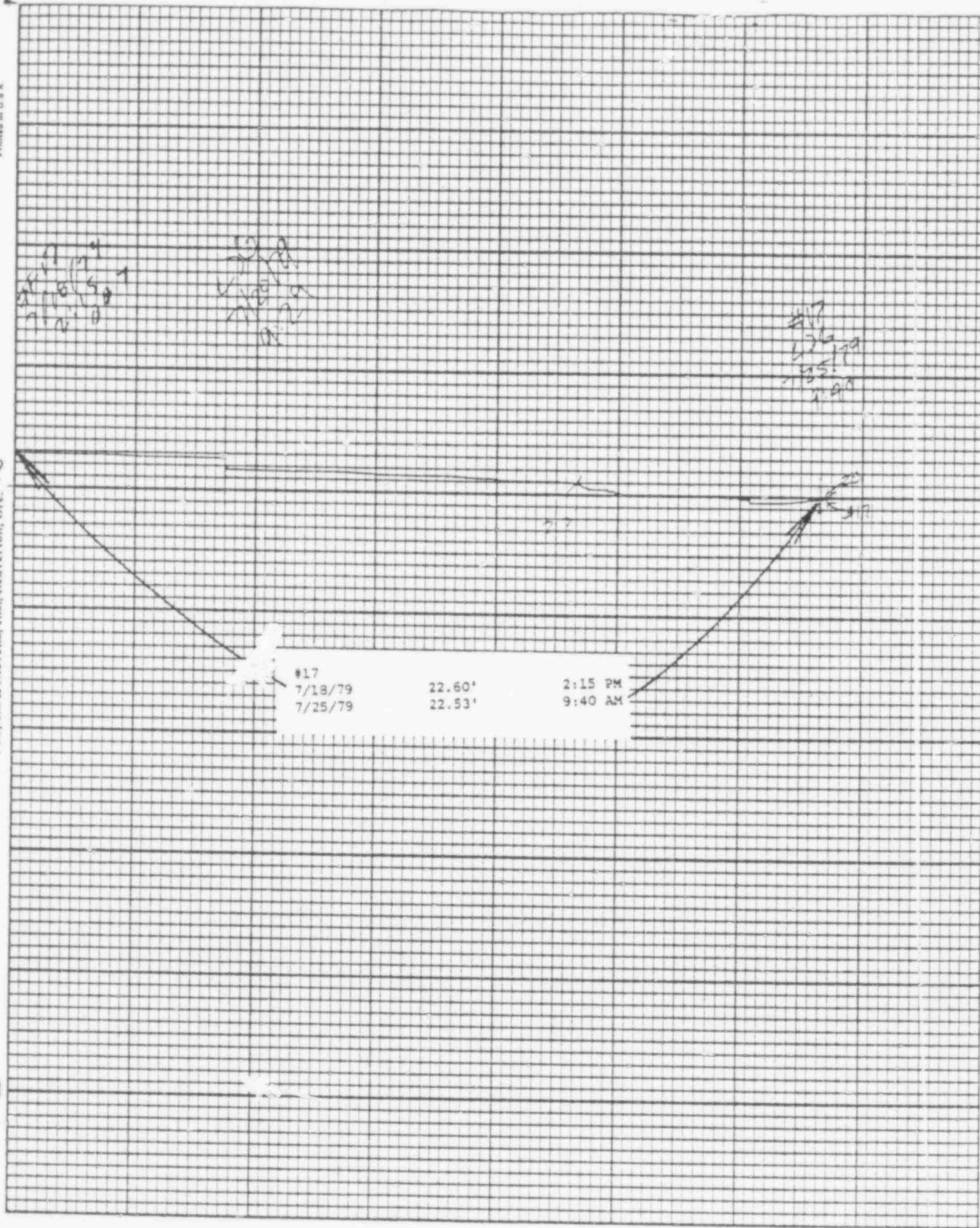
626 259





626 260

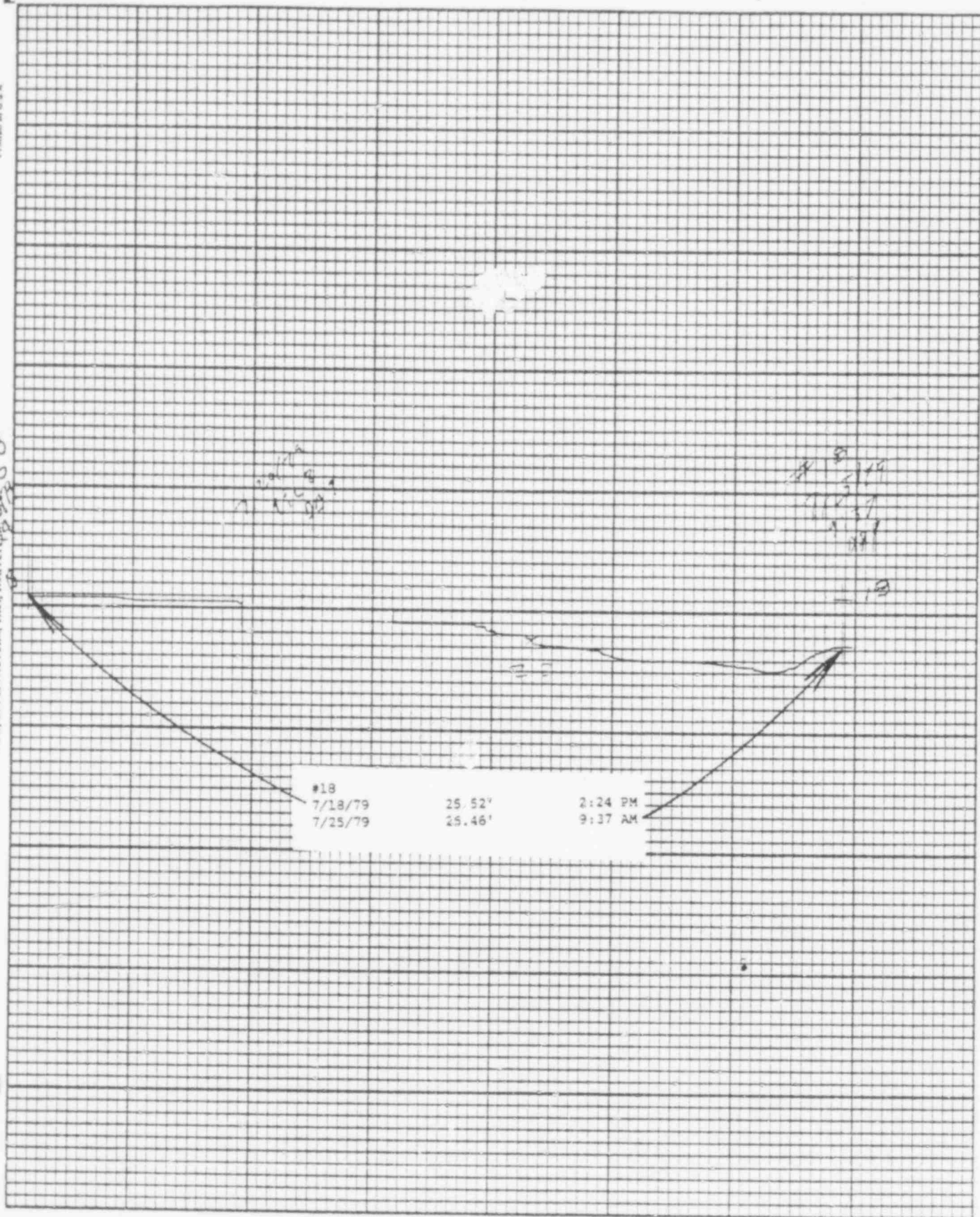




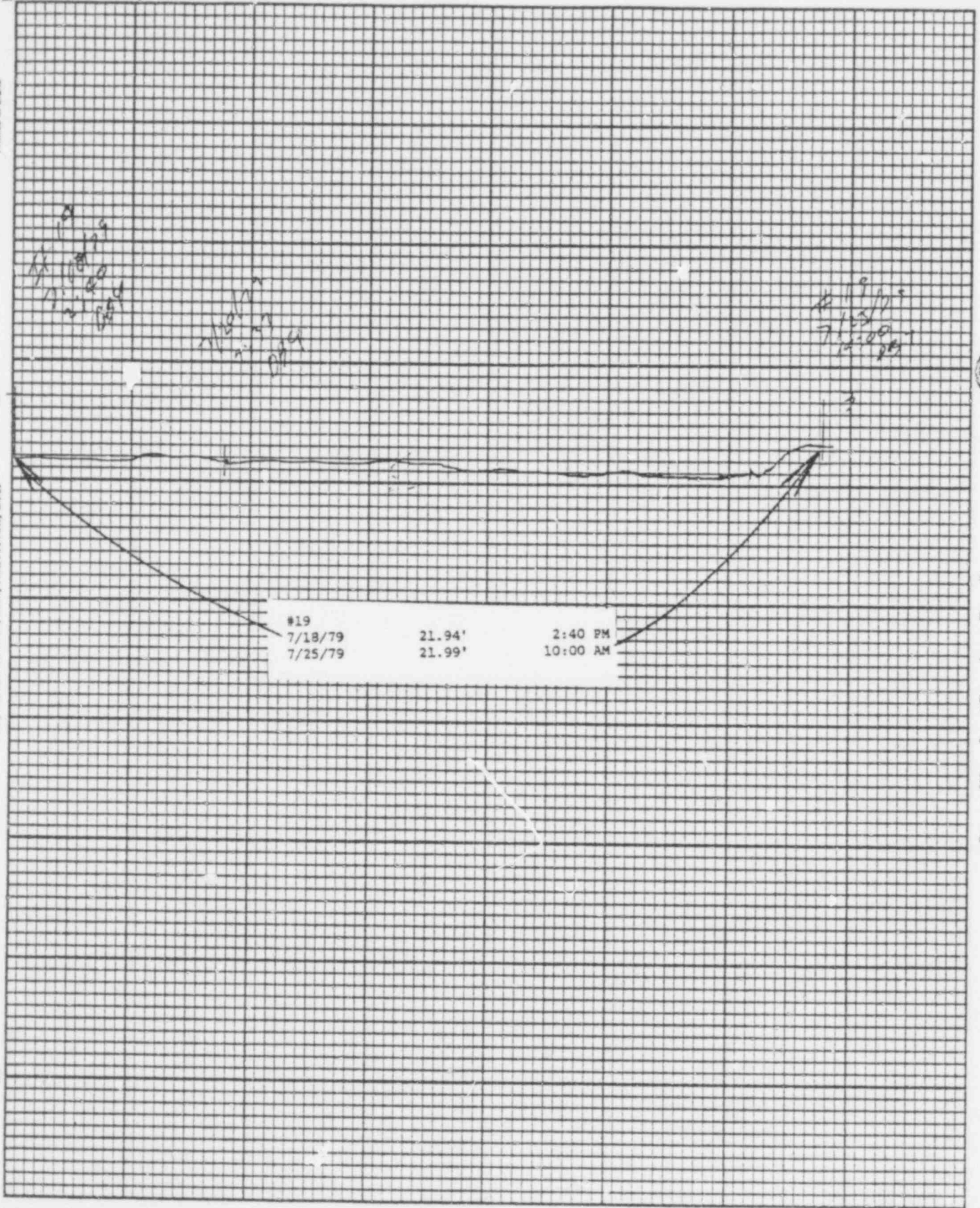
Leupold & Stevens, Inc., Revere, Mass. 01901



Stevens Water Level Recorder — Type R



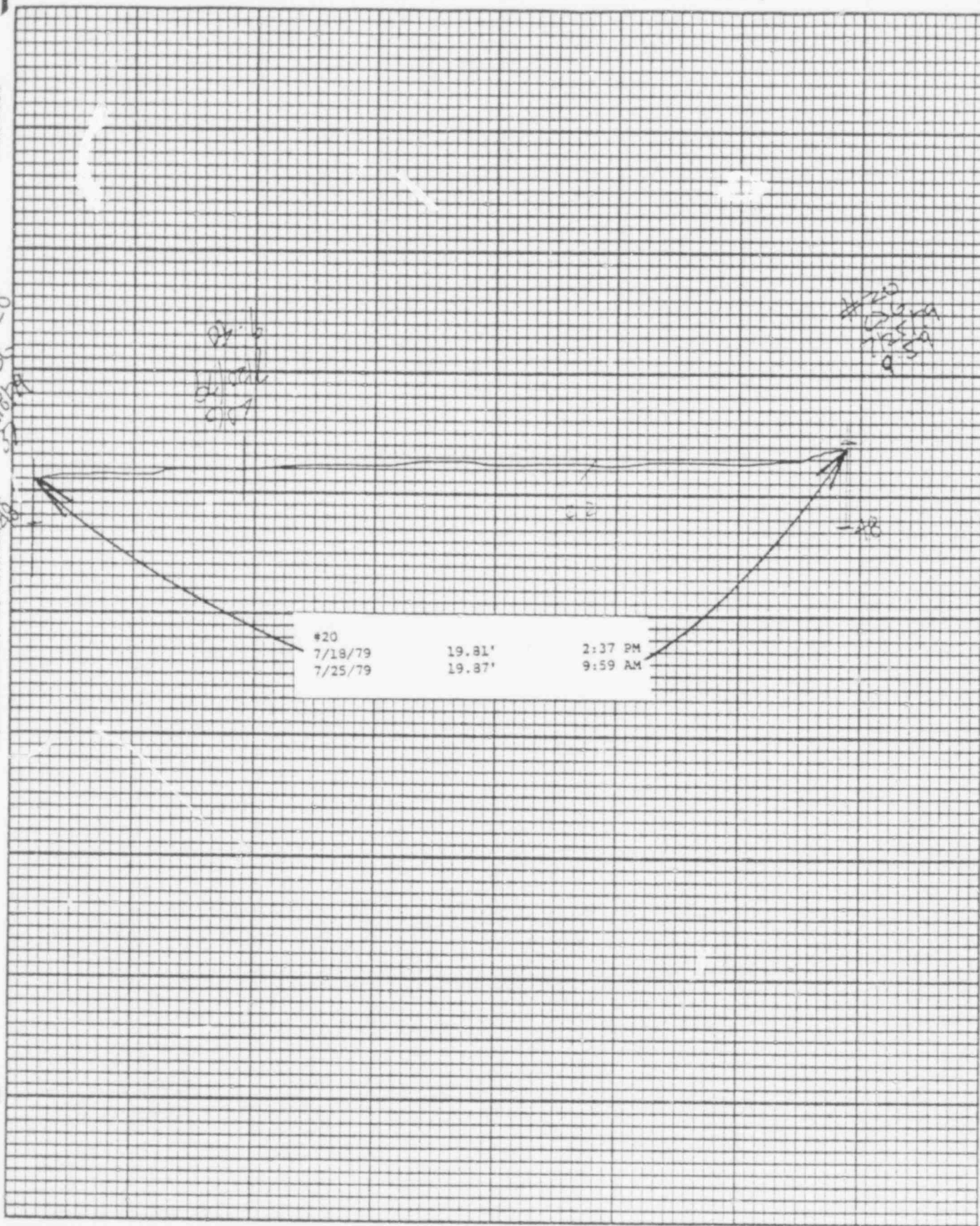
626 262





#20  
2:37 PM

Leupold & Stevens, Inc., Heaverston, Oreg.



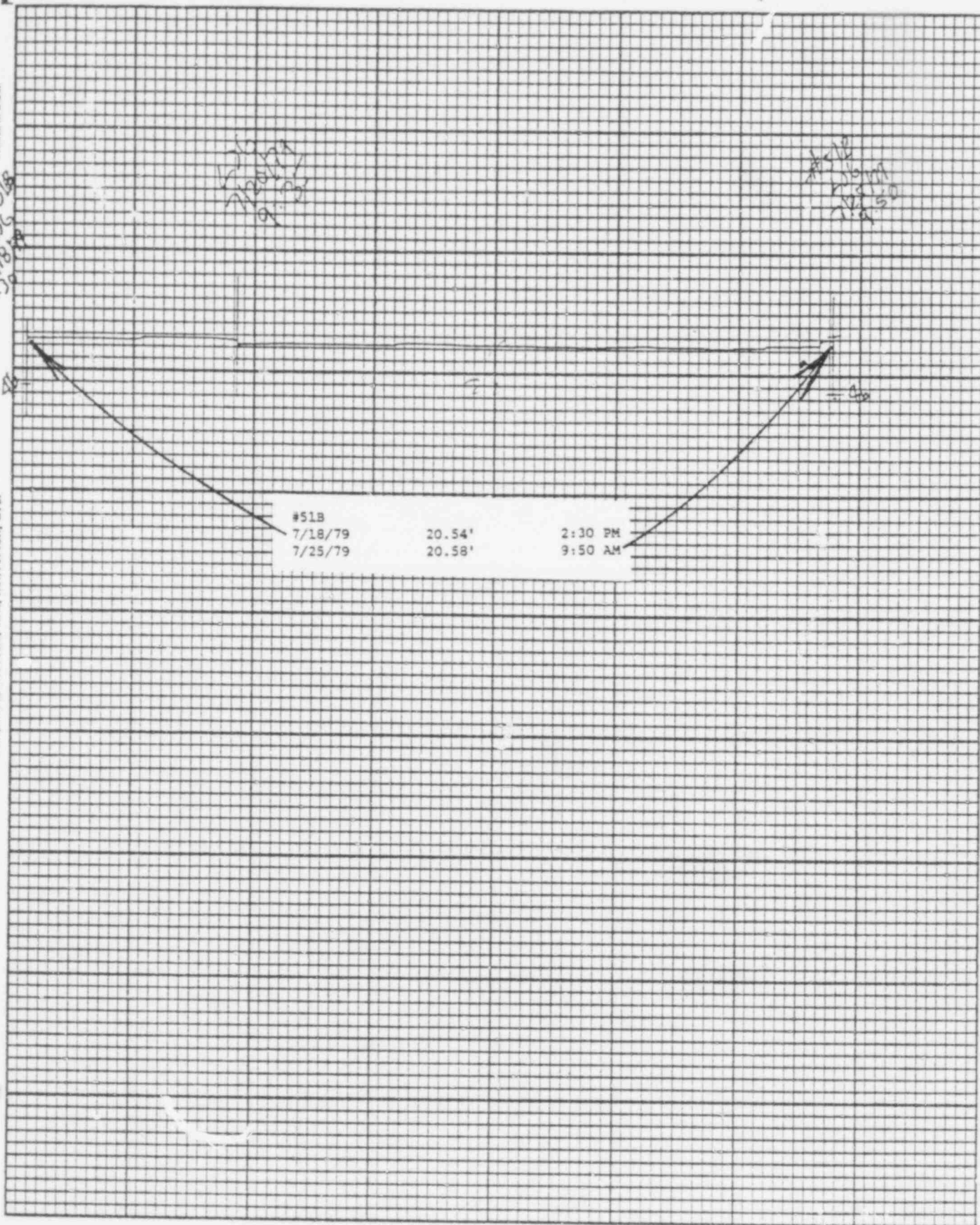
Printed in U.S.A.

Leupold & Stevens, Inc., Beaverlton, Ore.

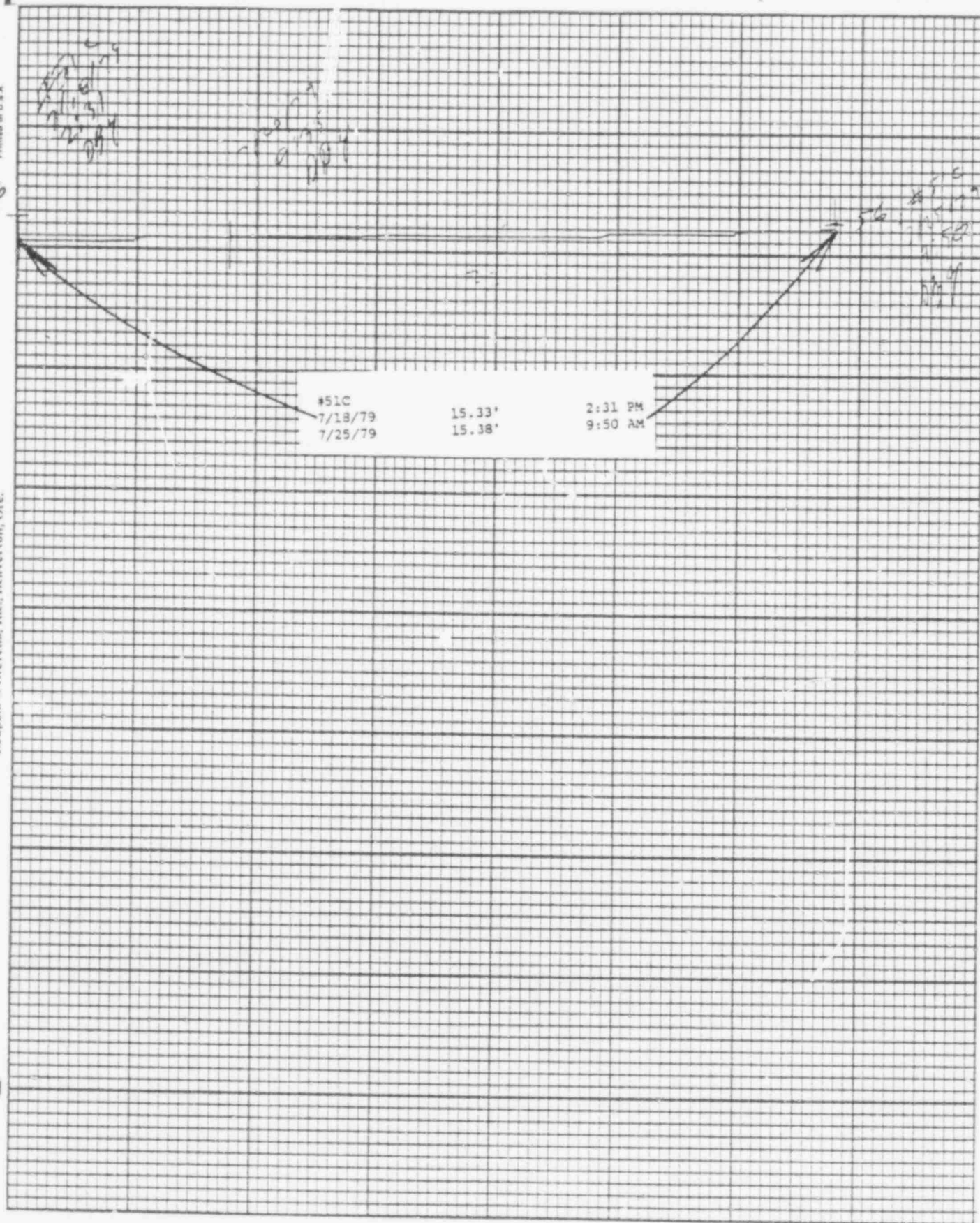
Chart P-1



Stevens Water Level Recorder — Type F



626 265





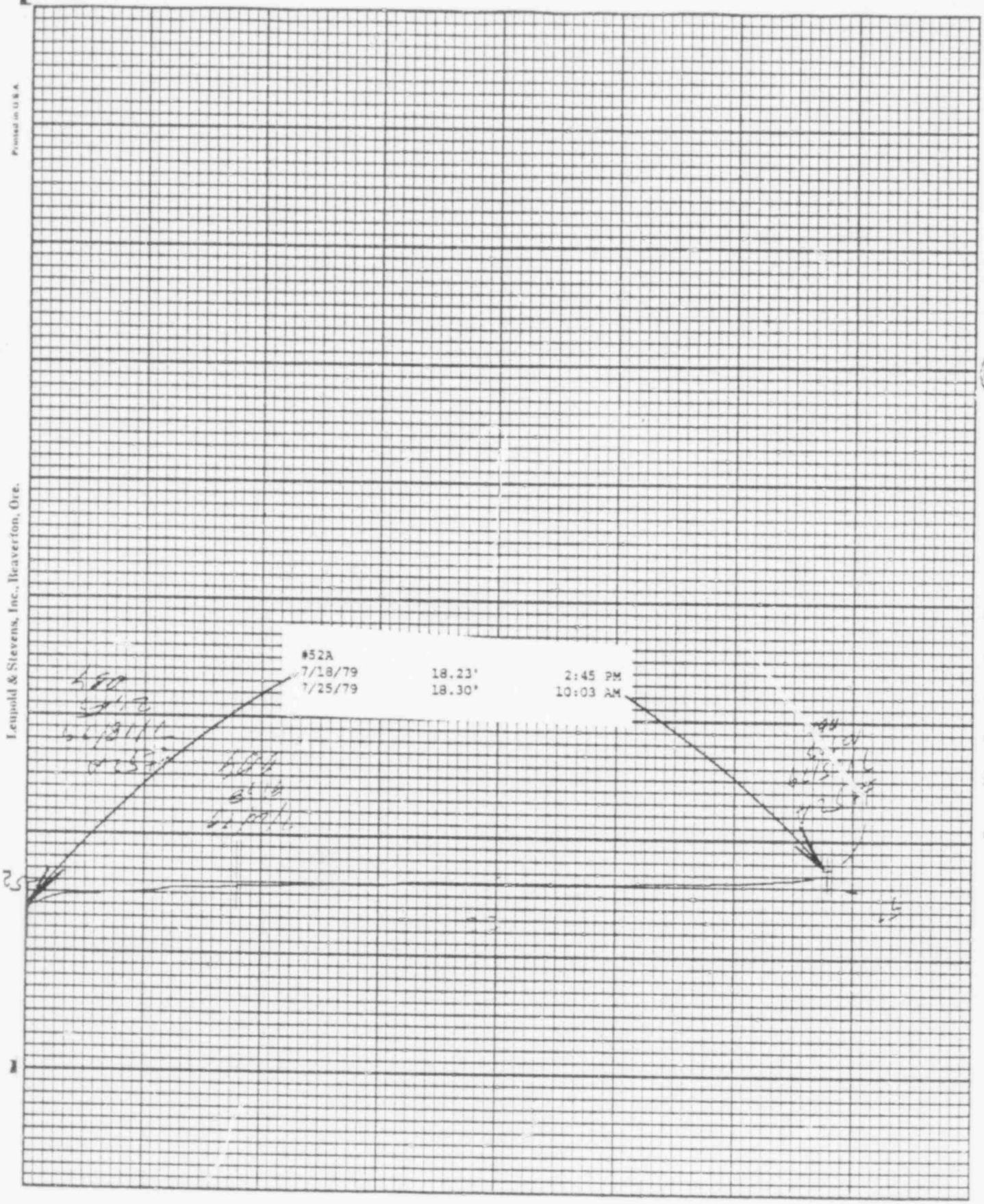
Printed in U.S.A.

Leupold & Stevens, Inc., Beaverton, Ore.

Chart F-1



Stevens Water Level Recorder — Type F



626 267

Printed in U.S.A.

Leupold & Stevens, Inc., Beaverton, Ore.

Chart F-1

Stevens Water Level Recorder — Type F



27/18/79  
27/25/79

17.81'  
17.84'  
10:07 AM

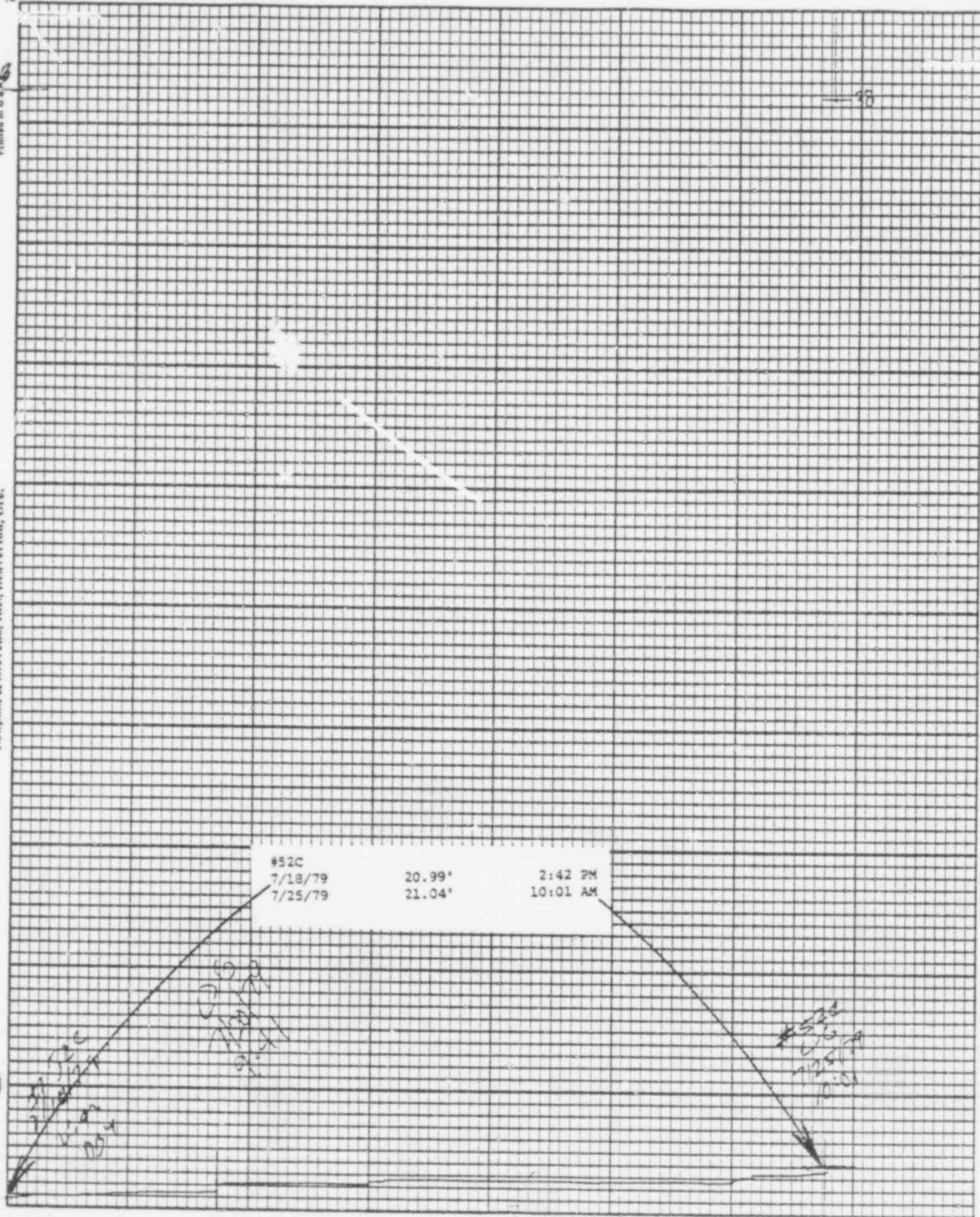
17.81'  
17.84'  
10:07 AM

#52B  
7/18/79  
7/25/79

17.81'  
17.84'

2:43 PM  
10:07 AM

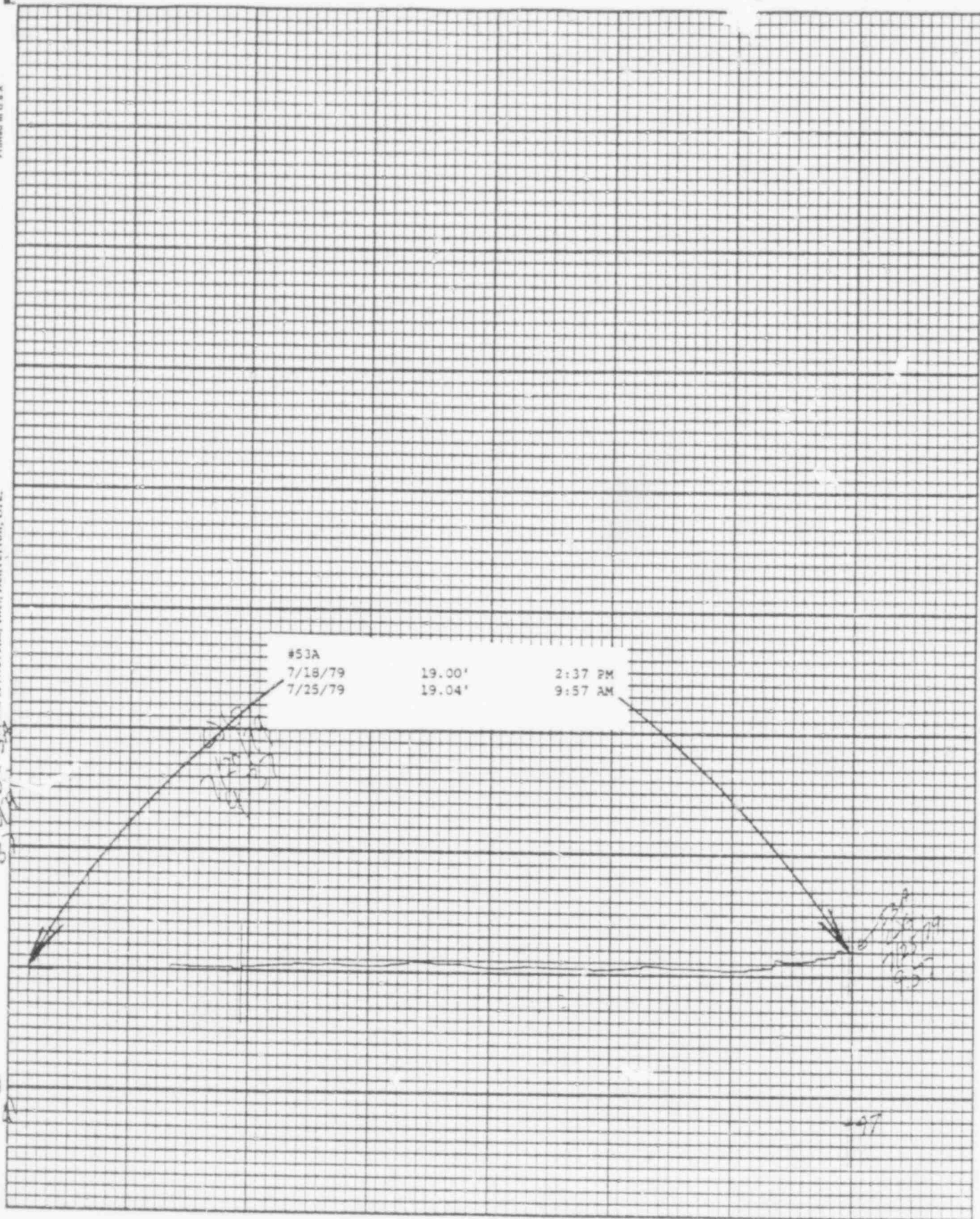
626 268

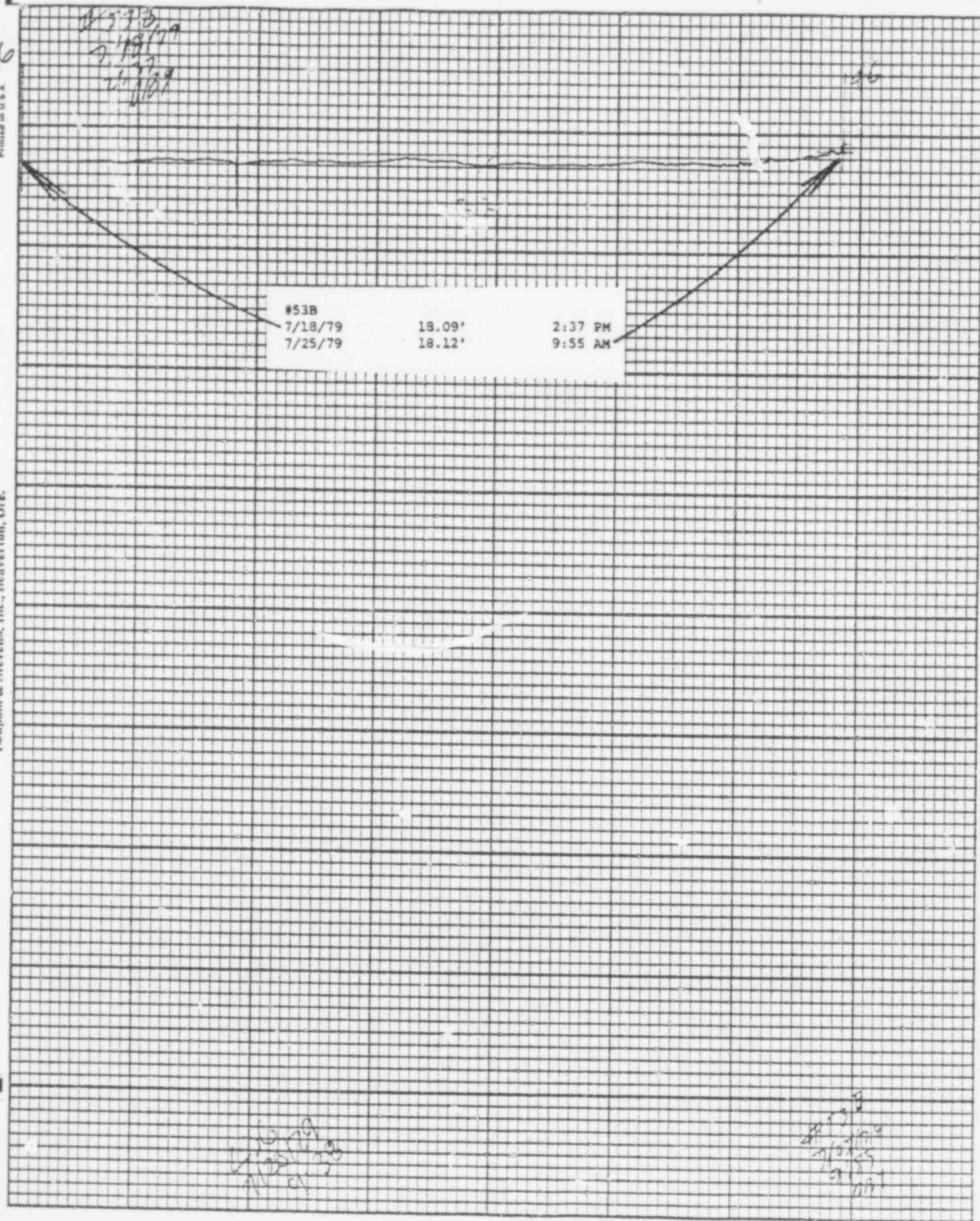


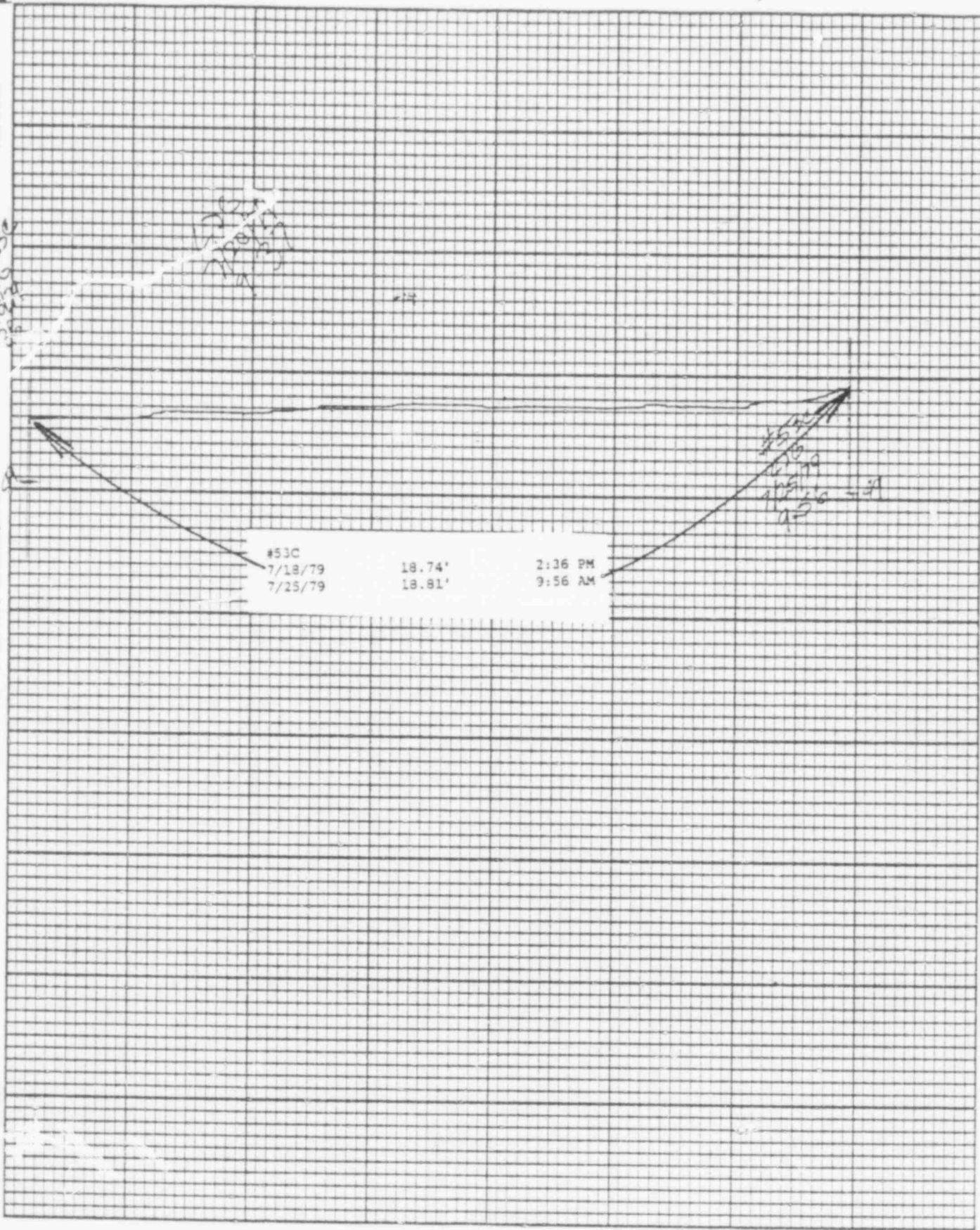


Samuel & Stevens, Inc., Newverton, Ore.

Stevens Water Level Recorder — Type R





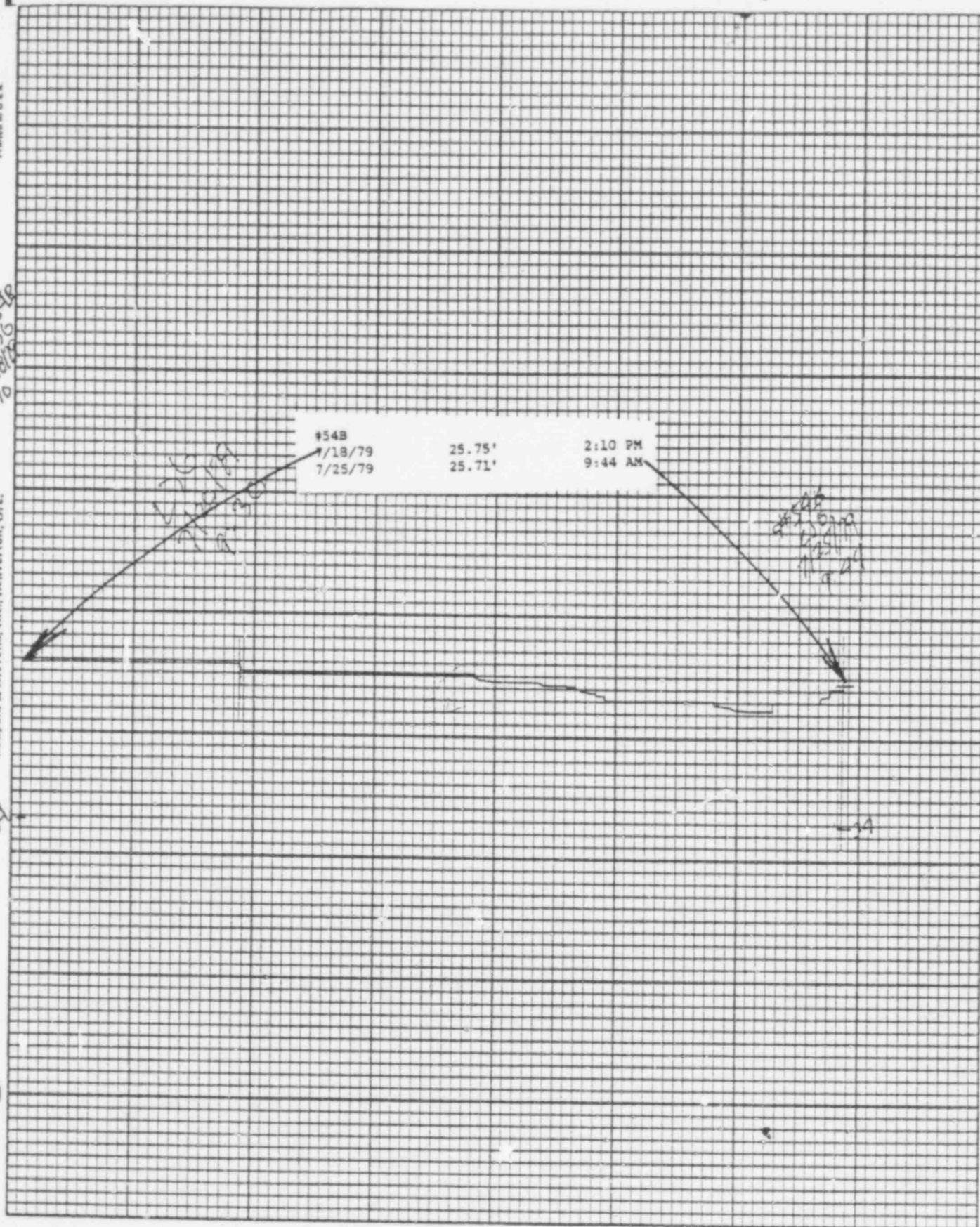




#548  
626  
7/18/79  
2:10

Leupold & Stevens, Inc., Heaverton, Ore.

34



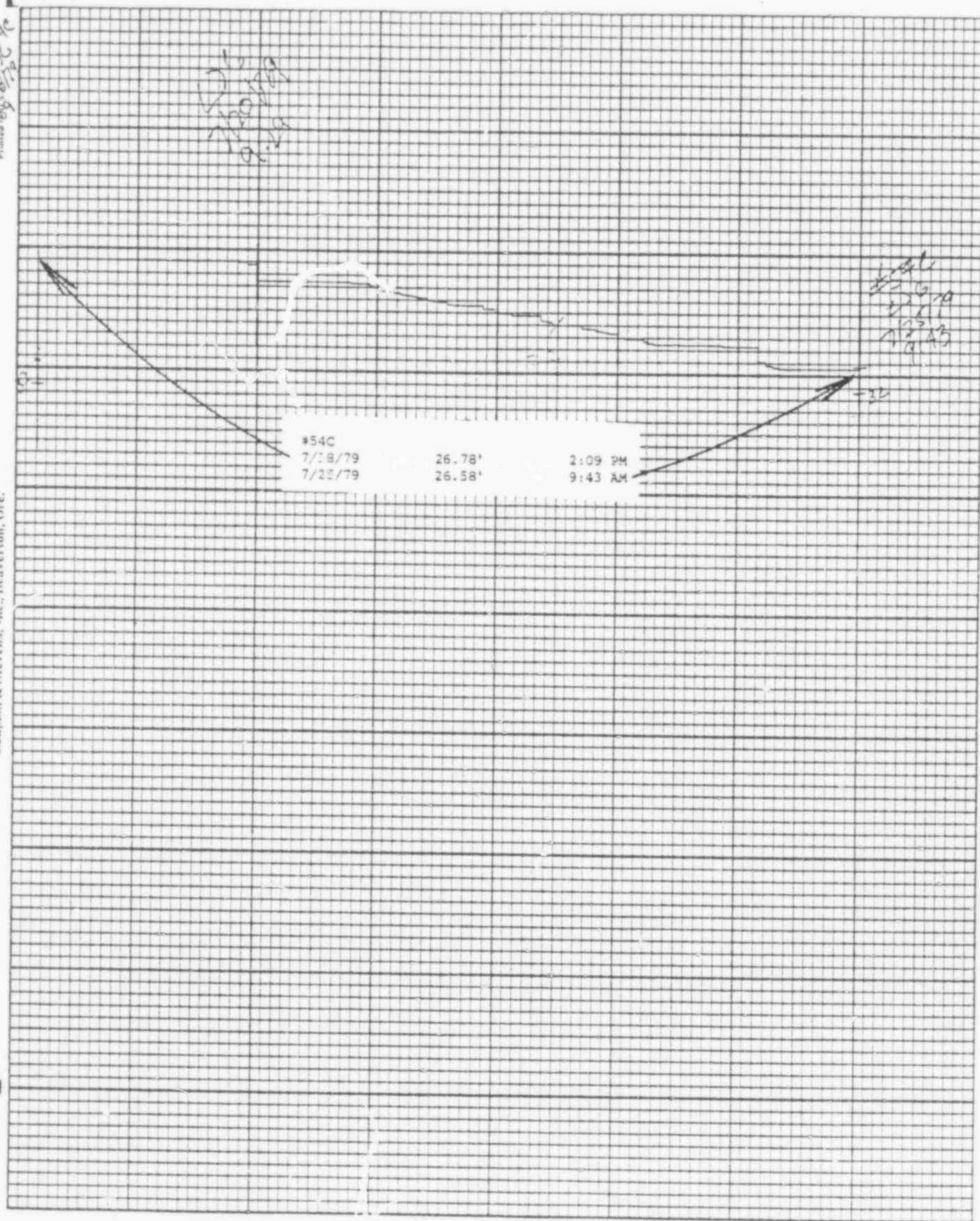
Printed 7/26/79

Leupold & Stevens, Inc., Beaverton, Ore.

Chart F-1

(S)

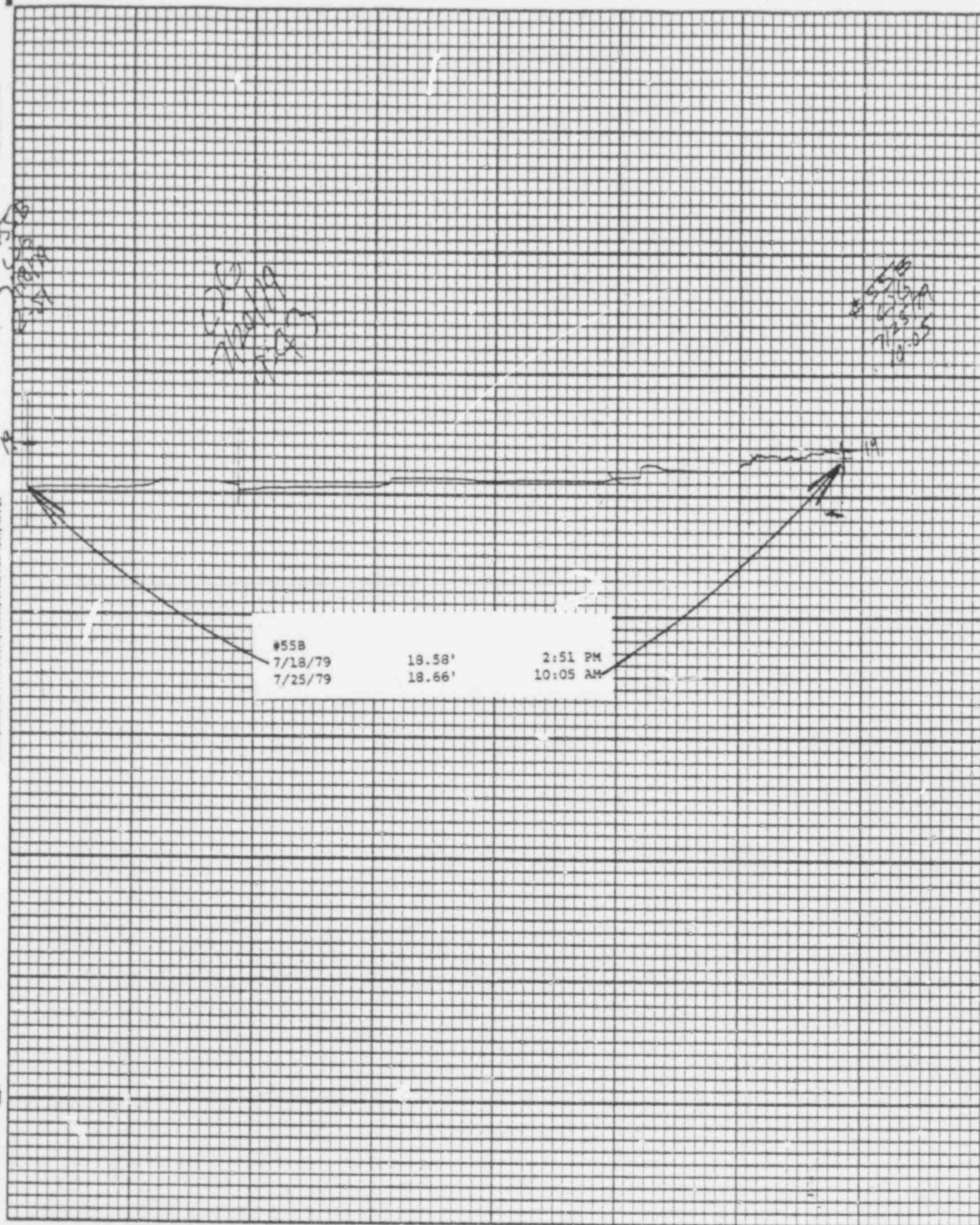
Stevens Water Level Recorder — Type F



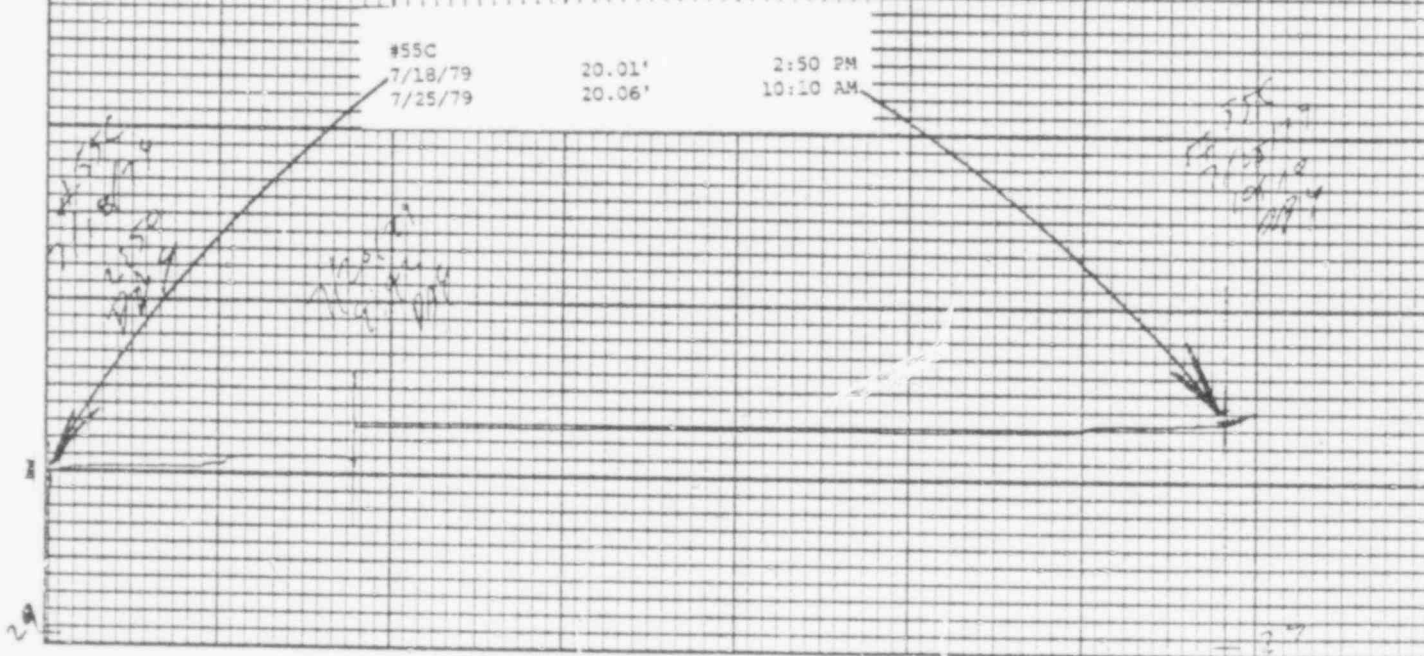
Leupold &amp; Stevens, Inc., Beaverton, Ore.

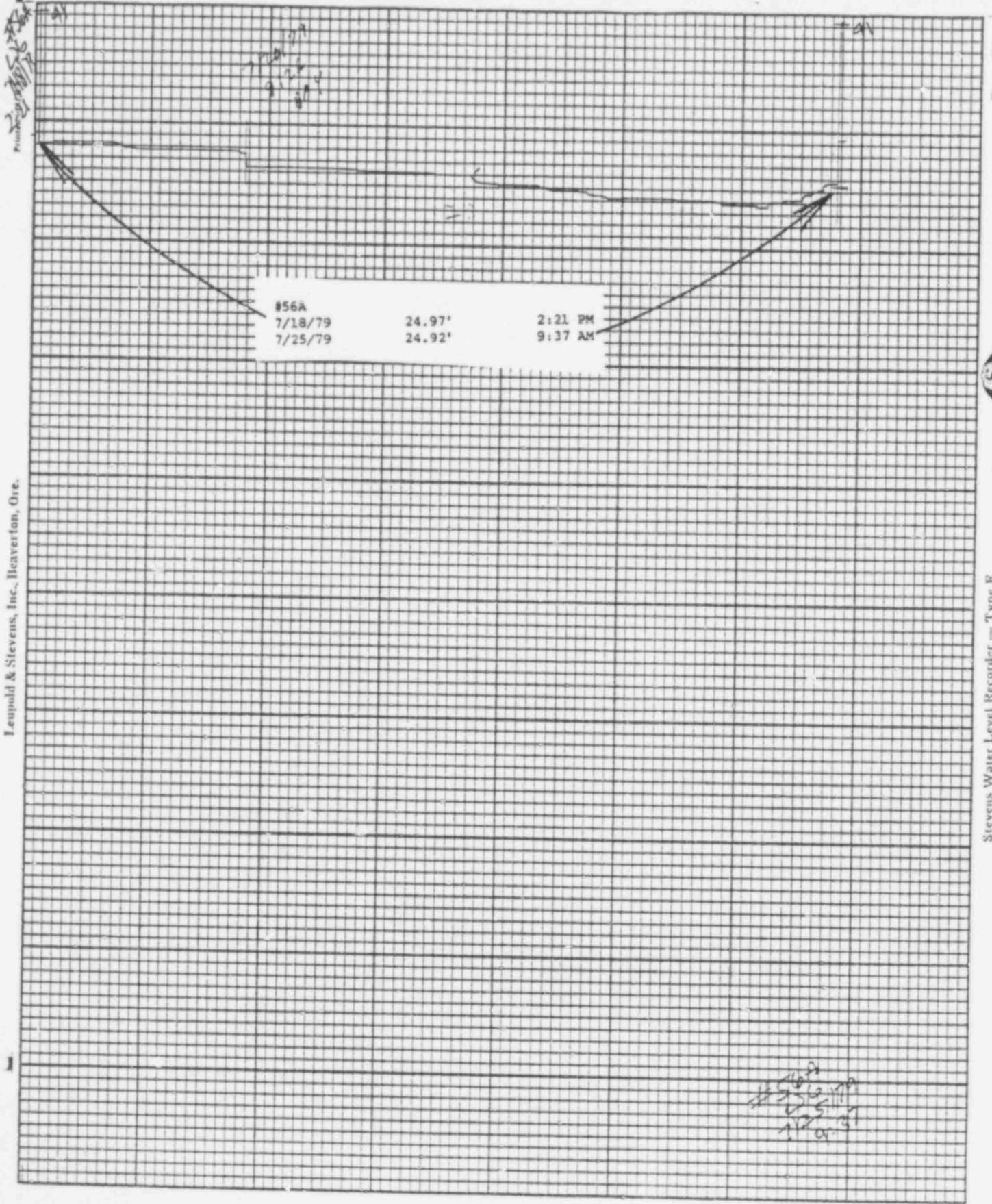
Chart P-1

Stevens Water Level Recorder — Type R





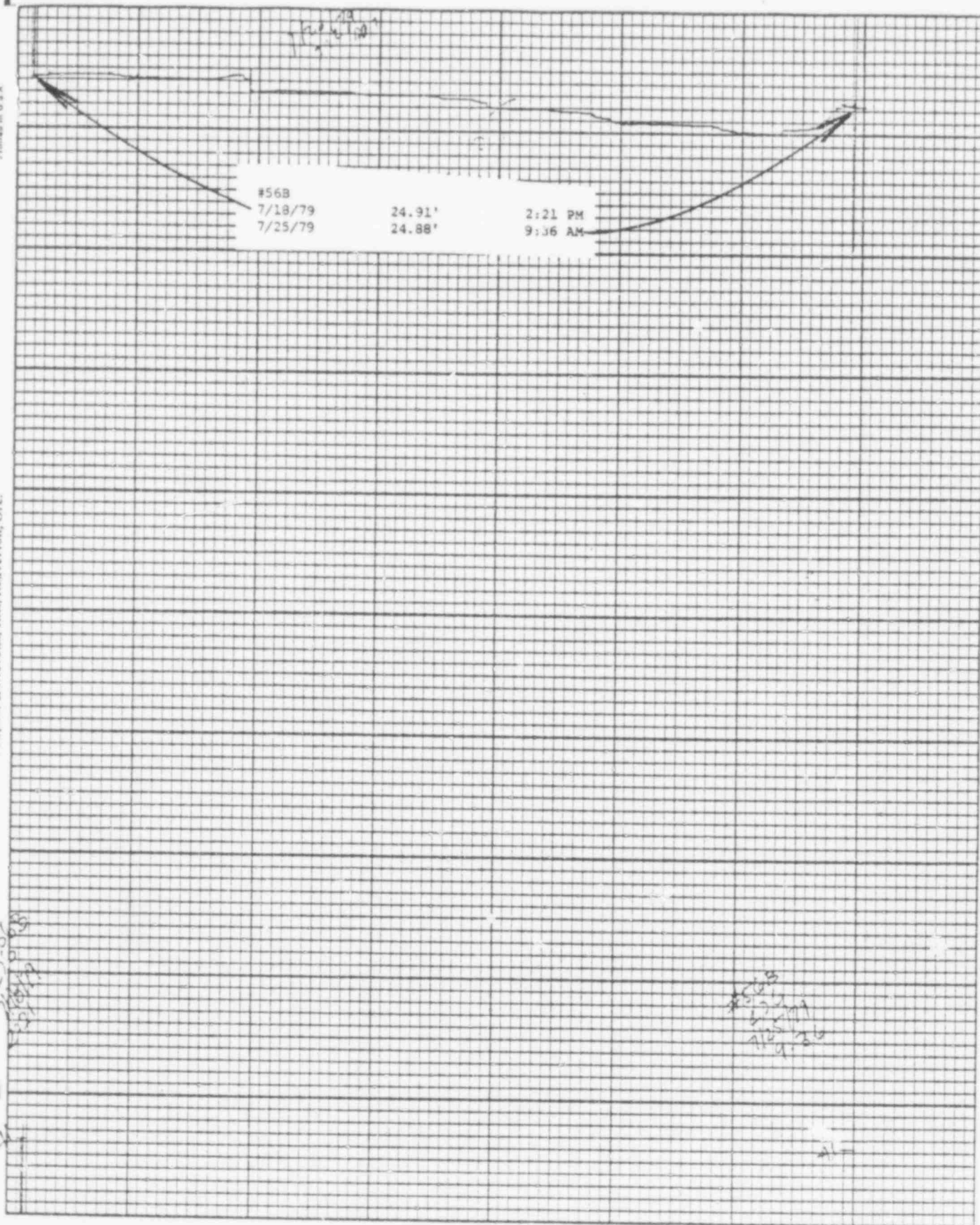




Printed in U.S.A.

Stevens Water Level Recorder — Type F

Chart F-1







#56C  
7/18/79  
2:22 PM

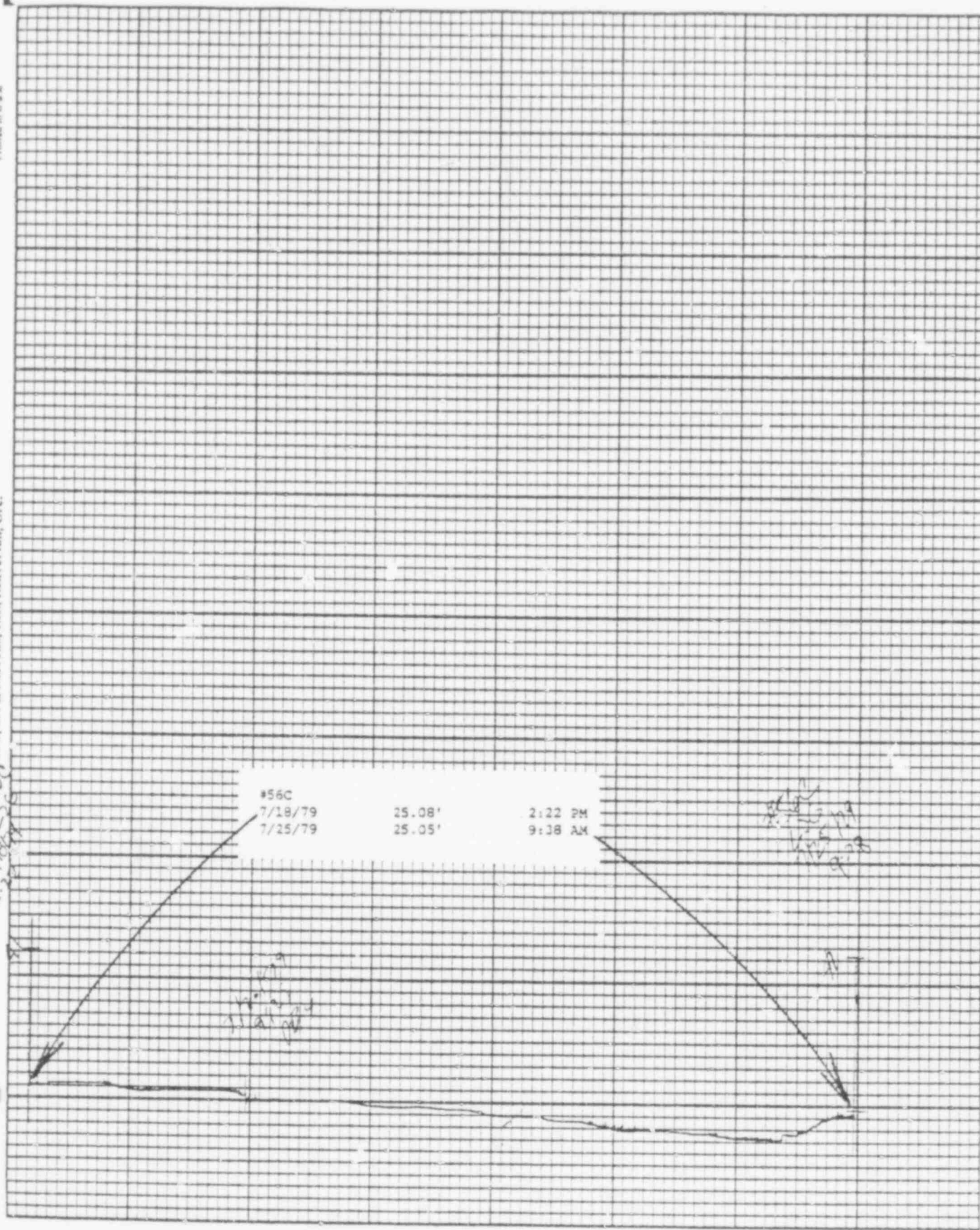
#56C  
7/18/79  
7/25/79

25.08'  
25.05'

2:22 PM  
9:18 AM

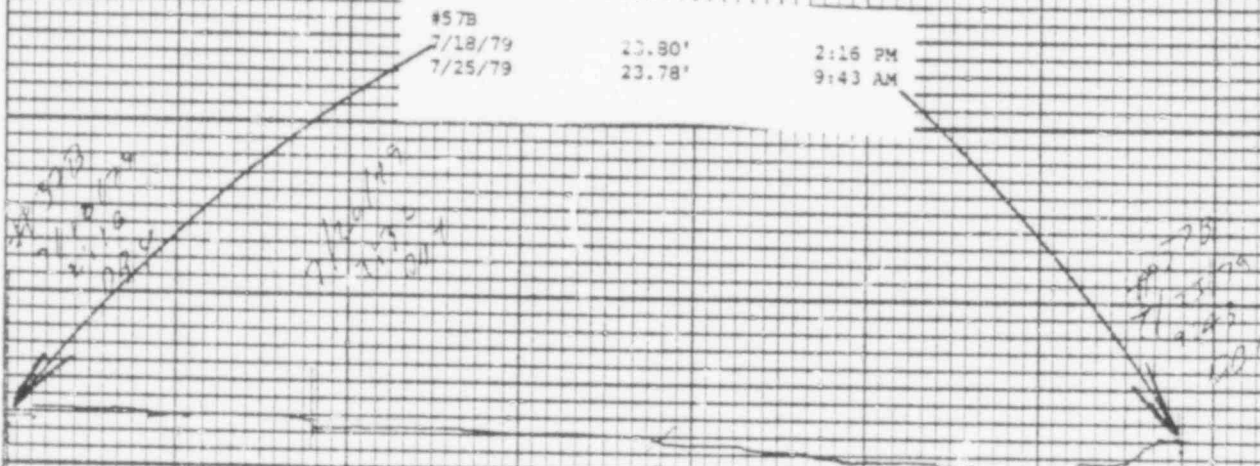
Handwritten notes and scribbles, possibly including "25.08" and "25.05".

Handwritten notes and scribbles, possibly including "25.08" and "25.05".



25.08 25.05

#57B  
 7/18/79 23.80' 2:16 PM  
 7/25/79 23.78' 9:43 AM





2-14  
7/18/79  
7/25/79

#57C  
7/18/79  
7/25/79

20.77'  
20.84'

2:14 PM  
9:46 AM

#57C  
7/18/79  
7/25/79  
10

125 281



3:33 PM  
7/18/79

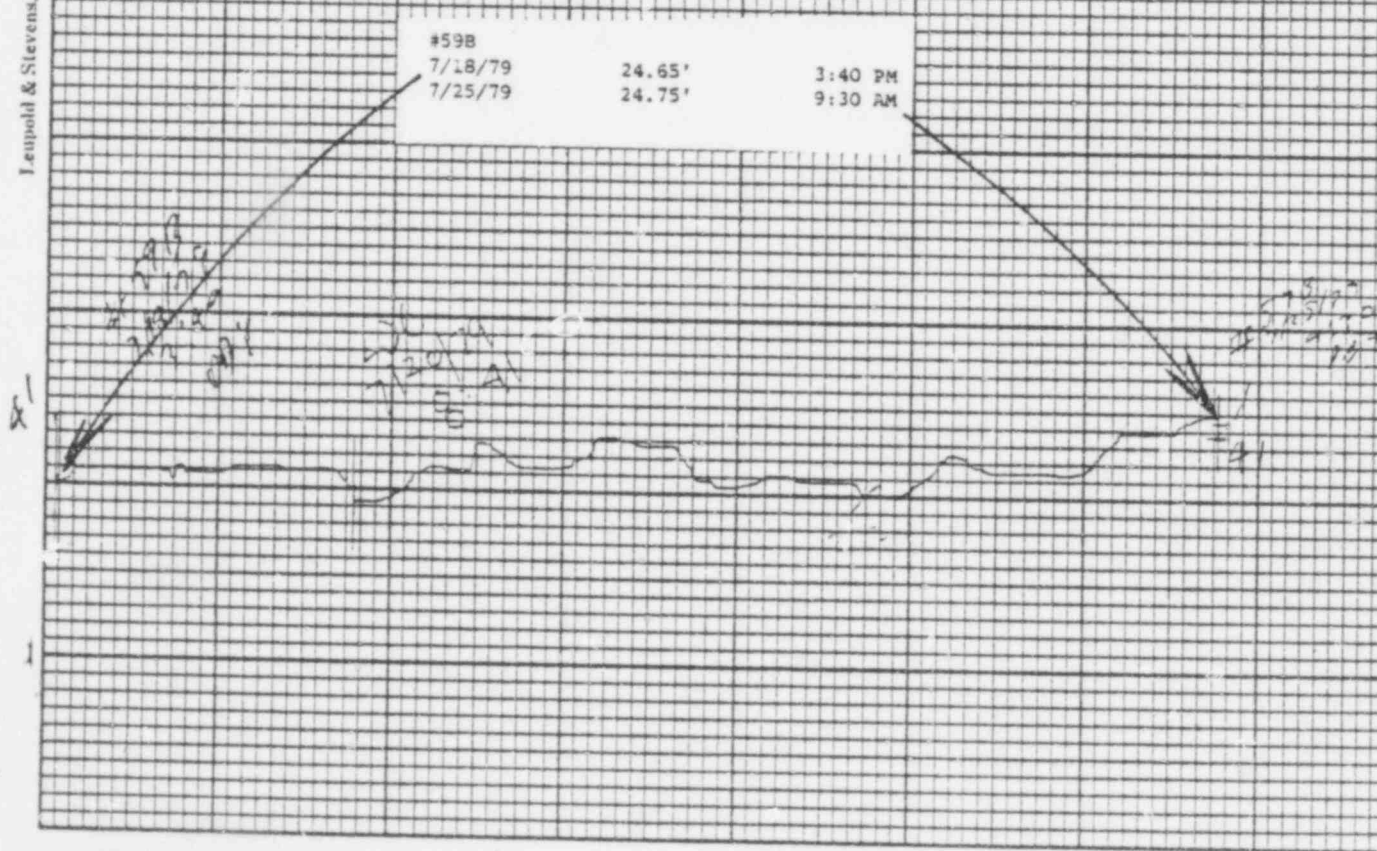
7/25/79  
9:28 AM

7/25/79  
9:28 AM

#58  
7/18/79  
7/25/79

28.63'  
28.55'

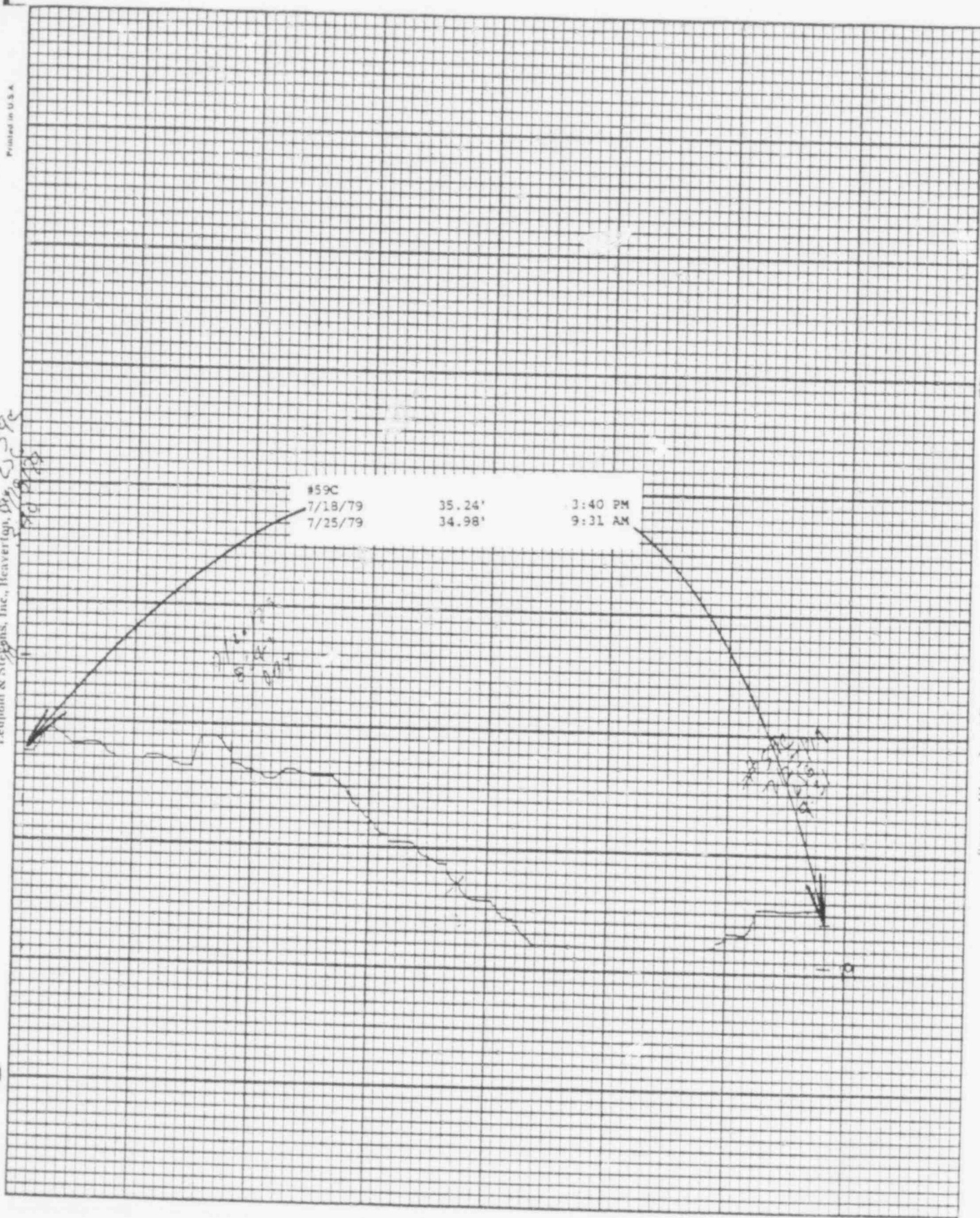
3:33 PM  
9:28 AM



Leupold & Stevens, Inc., Heaverly, Pa. 559C

#59C		
7/18/79	35.24'	3:40 PM
7/25/79	34.98'	9:31 AM

Stevens Water Level Recorder — Type F



626 284



BAILLY WELLS WITHOUT RECORDERS

7/25/79

<u>WELL #</u>	<u>WATER ELEVATION IN FEET</u>
62	32.68
65	27.51
67	23.30
72	10.87
73	11.32
74	14.62

DBY:lr  
7/27/79

526 285

POND LEVELS

<u>POND</u>	<u>7/25/79</u>
1	29.04'
2	30.43'
3	29.05'
4	24.10'
5	23.61'
6	33.60'
7	28.22'
8	DRY
9	28.42'
10	38.82'
11	40.37'
12	37.35'
13	37.95'

DBY:lr  
7/27/79

626 286

PNEUMATIC PRESSURE TRANSDUCERS

7/25/79

TRANSDUCER

WATER ELEVATION IN FEET

P-1	11.6
P-2	10.2
P-3	7.8
P-4	14.4
P-5	14.9
P-6	15.5

DBY:lr  
7/27/79

676 287



WATER METER READINGS

<u>DATE</u>	<u>TIME</u>	<u>METER READING (GALLONS)</u>	<u>INSTANTANEOUS FLOW RATE (GPM)</u>
<u>Sump Pump Discharge</u>			
7/25/79	2:08 PM	283167000	238

Well Point Discharge

SYSTEM NOT IN USE

DBY:lr  
7/27/79

626 288