

NEW YORK STATE ELECTRIC & GAS CORPORATION

BINGHAMTON, NEW YORK 13902

March 21, 1979

NYNRC - E020
File No. T4.2P3

Mr. Don E. Sells
Office of Nuclear Reactor Regulation
U.S. Nuclear Regulatory Commission
Washington, D.C. 20555

SUBJECT: New Haven 1 and 2
Docket No. STN50-596 & STN50-597

Dear Mr. Sells:

Attached are copies of the letters sent to the Town Supervisors at each alternate site as required by recent amendments to 10CFR2.101.

We met with local officials at each location on the dates shown below:

March 1 - Northumberland Town Board

March 12 - Barton Town Board
Gardiner Town Board

March 13 - Montgomery County Board of Supervisors
(including Charleston Town Supervisor)

There were no requests for the ER or any other portions of the application. However, people at each site were interested in receiving copies of our reconnaissance level information report, which we have agreed to send them (see attached letters).

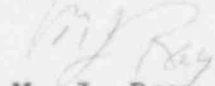
At each meeting, we passed out copies of the letters, copies of our press release (attached), and extra maps of the site location. In our presentation, we discussed the requirements for identifying additional alternate sites and summarized the progress of our studies (siting study, detailed studies at two sites, prime site selection, application) as well as describing how we selected a site in each of the four areas (using siting study information to compare the environmental and economic characteristics to select the most suitable sites). Everyone seemed to follow what we were saying and to generally understand

37 419 318 A
7903260288
Cool ES-11

the process. Most of the questions concerned how we selected the site in each region and how the local area would be involved in the licensing process. There was ample news coverage with several follow-up interviews.

If you would like to know more about the announcements at each site, please call Mr. T. J. Hadwin.

Very truly yours,



M. J. Ray
Manager - Nuclear Projects

MJR/TJH/lh

Attachments

cc: L. L. Staley
T. M. Turner
N. L. Yezzi
A. F. Zallnick
R. Gardner (S&W)
A. F. Kalfopoulos (UE&C)
R. Schutt (HMLF)

419 319

NEW YORK STATE ELECTRIC & GAS CORPORATION

BINGHAMTON, NEW YORK 13902

March 12, 1979

NYMISC - E048
File No. T4.2P4

Edgar M. Dixon
Town Supervisor
317 Chemung Street
Waverly, New York 14892

SUBJECT: New Haven 1 and 2
Docket Nos. STN50-596 and STN50-597
Alternate Site Identification

Dear Mr. Dixon:

On November 22, 1978, New York State Electric & Gas Corporation and Long Island Lighting Company filed applications for permits to construct a 2500-megawatt nuclear power plant in the Town of New Haven. The proposed site is located near Lake Ontario in Oswego County, approximately 9 miles east of the City of Oswego and 30 miles north of Syracuse. The application to the New York State Board on Electric Generation Siting and the Environment identifies a preferred alternate site in the Town of Stuyvesant on the Hudson River, approximately 12 miles south of Albany. In recent proceedings before the Nuclear Regulatory Commission, we have been asked to identify four additional alternate sites for the two-unit nuclear generating station.

I am writing to inform you that a site in the Town of Barton, indicated on the attached map, has been designated as an alternate site in response to the NRC request. A figure generally describing the plant and a detailed map of the site boundary are also included. The three remaining alternate sites are near the Upper Hudson River, the Mohawk River, and the Lower Hudson River.

A copy of the application to the Nuclear Regulatory Commission and the accompanying Environmental Report, and changes to the document which relate to the alternate sites will be provided to you at your request. The NRC's analysis of the alternative sites will be included in their draft Environmental Statement. We would be glad to provide you with a copy of that report, if you wish, when it is completed this fall, or you can obtain a copy directly from the Nuclear Regulatory Commission.

412 320

Representatives from our Company will be meeting with you in the near future to discuss this proceeding and the alternate site in more detail. If at that time you can identify the type of information you would be interested in, we will make sure that you receive the necessary copies. At a later date if you need additional information or have any questions, please contact:

Mr. M. J. Ray, Manager-Nuclear Projects
New York State Electric & Gas Corporation
4500 Vestal Parkway East
Binghamton, New York 13902
Phone: (607) 729-2551, Ext. 421

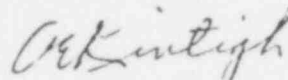
In 1975 and 1976 a statewide survey to identify suitable power plant sites was undertaken. Although the site in your area attracted favorable attention, New Haven and Stuyvesant were announced as the preferred sites in July 1976. A lengthy and detailed study of the environmental, engineering, economic and social characteristics of these two sites was conducted. By April 1978 enough data had been accumulated to decide that New Haven would be the prime and Stuyvesant the alternate site. Upon completion of the studies, the New Haven site was designated as the prime site and Stuyvesant the alternate in our application to the New York State Board on Electric Generation Siting and the Environment for permission to build the plant. An application for a construction permit was made to the NRC for a generating station at the New Haven site.

The NRC has asked for a description of the characteristics of the Barton site and the other three alternate sites, using information taken from published reports, maps and a reconnaissance of the areas. As this information is submitted to the NRC, we will be glad to provide you with data concerning the site in your area, if you are interested.

Should any licensing authority believe that the site identified in your town is obviously superior or preferable to the prime site in the Town of New Haven or the alternate site in the Town of Stuyvesant, it would be necessary to conduct substantial additional studies in the Town of Barton and in all probability new applications would have to be filed with the Nuclear Regulatory Commission and the New York State Board on Electric Generation Siting and the Environment.

If you have any questions, please call us.

Very truly yours,

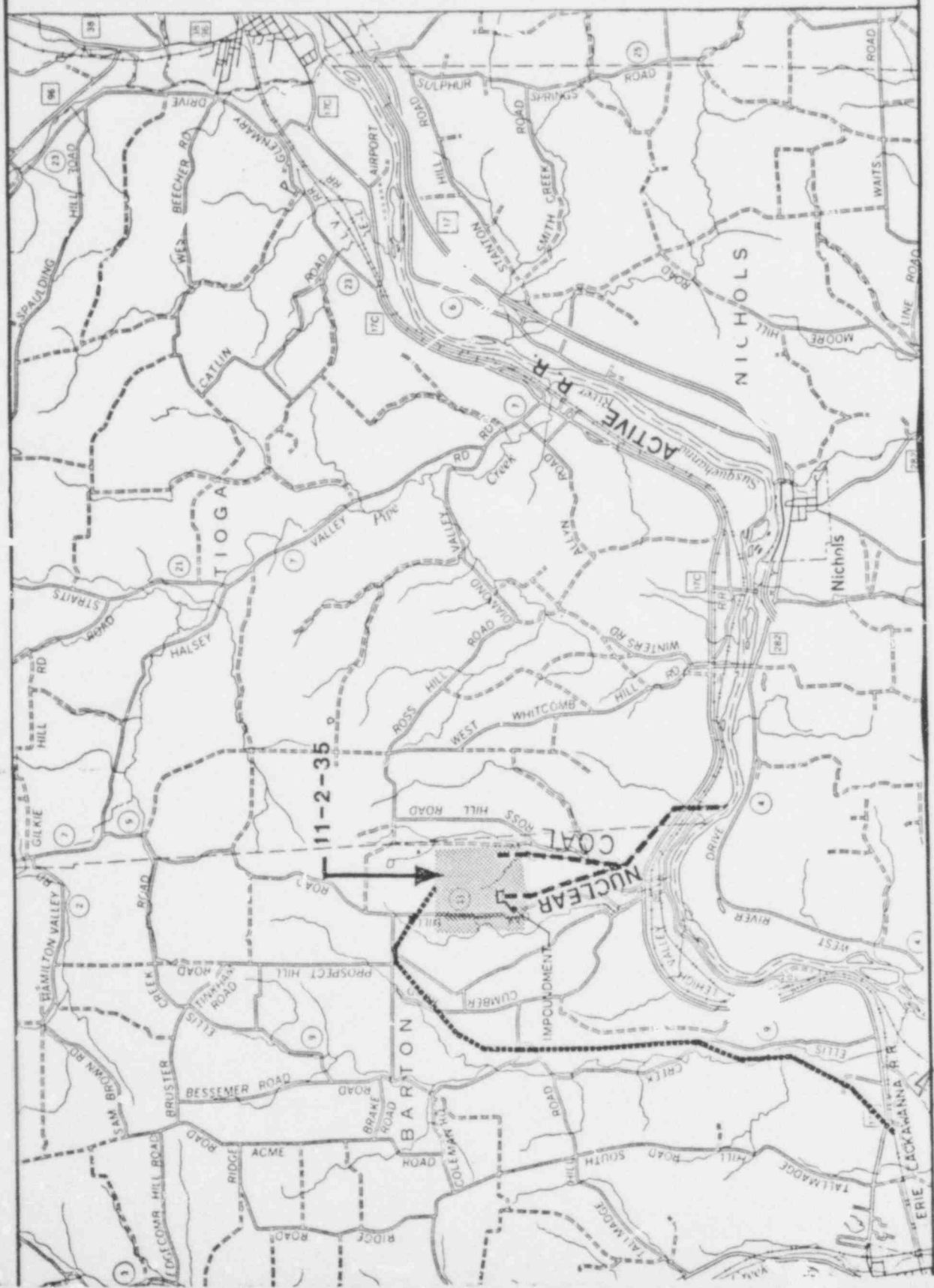


A. E. Kintigh
Vice President - Generation

AEK/TJH/lh

Attachments

419 320



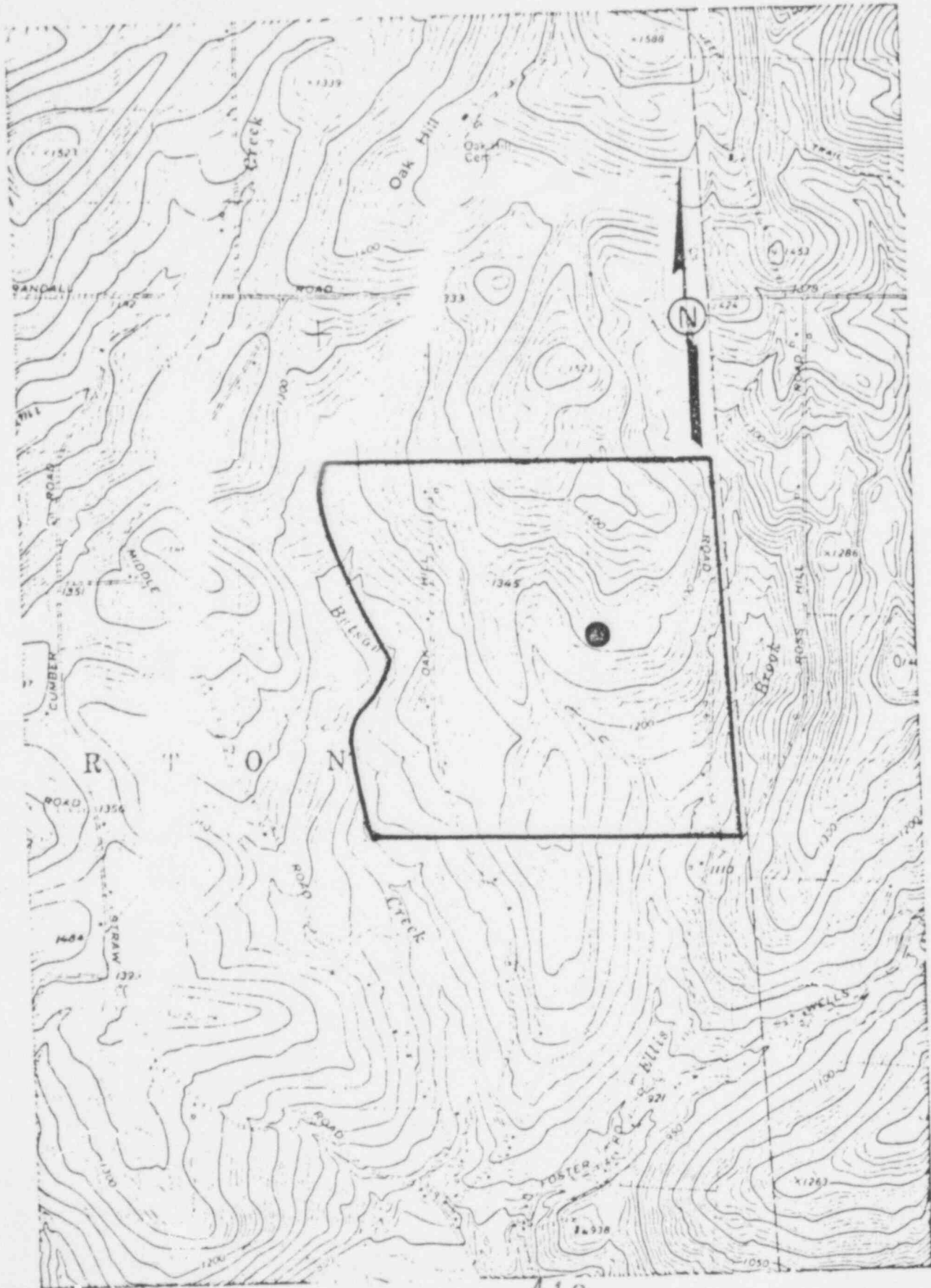
LEGEND
 PIPELINE
 RAILROAD
 1 SQUARE MILE SITE AS EVALUATED

BASE MAP NYS TIOGA COUNTY MAP

NEW YORK STATE ELECTRIC & GAS CORPORATION
 NEW SITE SELECTION STUDY
 RAILROAD & PIPELINE ROUTE
 SITE II-2-35 (SUSQUEHANNA
 NUCLEAR AND COAL PLANT)
 FIGURE

322

617



IV-297 419 323

Barton (1969)

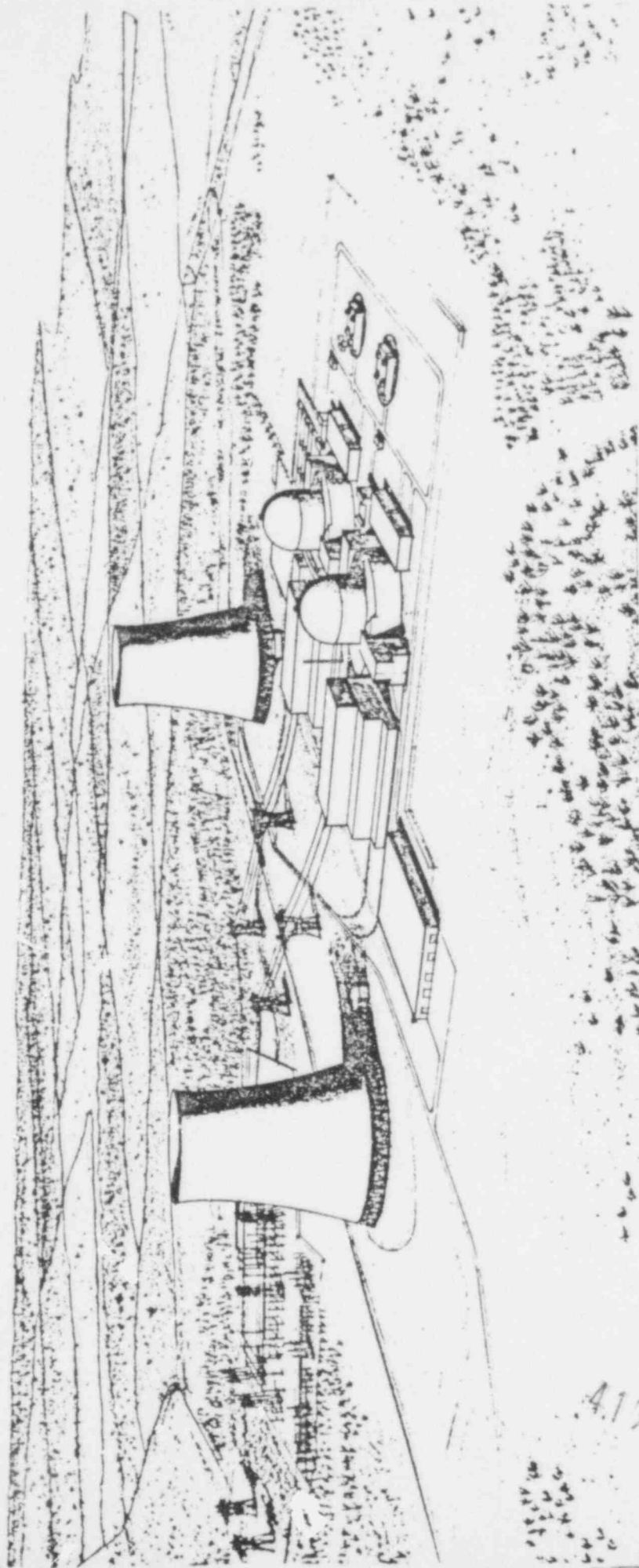


FIGURE 3.1-12 NEW HAVEN SITE
PERSPECTIVE VIEW OF SITE AREA
LOOKING NORTHWEST
NEW YORK STATE ELECTRIC & GAS CORPORATION
ENVIRONMENTAL REPORT

412

324

NEW YORK STATE ELECTRIC & GAS CORPORATION

BINGHAMTON, NEW YORK 13902

March 12 1979

NYMISC - E048
File No. T4.2P4

Calvin Humphrey
Town Supervisor
R.D. #1, Island Road
Esperance, New York 12066

SUBJECT: New Haven 1 and 2
Docket Nos. STN50-596 and STN50-597
Alternate Site Identification

Dear Mr. Humphrey:

On November 22, 1978, New York State Electric & Gas Corporation and Long Island Lighting Company filed applications for permits to construct a 2500-megawatt nuclear power plant in the Town of New Haven. The proposed site is located near Lake Ontario in Oswego County, approximately 9 miles east of the City of Oswego and 30 miles north of Syracuse. The application to the New York State Board on Electric Generation Siting and the Environment identifies a preferred alternate site in the Town of Stuyvesant on the Hudson River, approximately 12 miles south of Albany. In recent proceedings before the Nuclear Regulatory Commission, we have been asked to identify four additional alternate sites for the two-unit nuclear generating station.

I am writing to inform you that a site in the Town of Charleston indicated on the attached map, has been designated as an alternate site in response to the NRC request. A figure generally describing the plant and a detailed map of the site boundary are also included. The three remaining alternate sites are near the Upper Hudson River, the Susquehanna River, and the Lower Hudson River.

A copy of the application to the Nuclear Regulatory Commission and the accompanying Environmental Report, and changes to the document which relate to the alternate sites will be provided to you at your request. The NRC's analysis of the alternative sites will be included in their draft Environmental Statement. We would be glad to provide you with a copy of that report, if you wish, when it is completed this fall, or you can obtain a copy directly from the Nuclear Regulatory Commission.

419 325

Representatives from our Company will be meeting with you in the near future to discuss this proceeding and the alternate site in more detail. If at that time you can identify the type of information you would be interested in, we will make sure that you receive the necessary copies. At a later date if you need additional information or have any questions, please contact:

Mr. M. J. Ray, Manager-Nuclear Projects
New York State Electric & Gas Corporation
4500 Vestal Parkway East
Binghamton, New York 13902
Phone: (607) 729-2551, Ext. 421

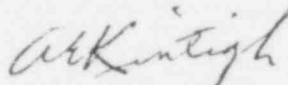
In 1975 and 1976 a statewide survey to identify suitable power plant sites was undertaken. Although the site in your area attracted favorable attention, New Haven and Stuyvesant were announced as the preferred sites in July 1976. A lengthy and detailed study of the environmental, engineering, economic and social characteristics of these two sites was conducted. By April 1978 enough data had been accumulated to decide that New Haven would be the prime and Stuyvesant the alternate site. Upon completion of the studies, the New Haven site was designated as the prime site and Stuyvesant the alternate in our application to the New York State Board on Electric Generation Siting and the Environment for permission to build the plant. An application for a construction permit was made to the NRC for a generating station at the New Haven site.

The NRC has asked for a description of the characteristics of the Charleston site and the other three alternate sites, using information taken from published reports, maps and a reconnaissance of the areas. As this information is submitted to the NRC, we will be glad to provide you with data concerning the site in your area, if you are interested.

Should any licensing authority believe that the site identified in your town is obviously superior or preferable to the prime site in the Town of New Haven or the alternate site in the Town of Stuyvesant, it would be necessary to conduct substantial additional studies in the Town of Charleston and in all probability new applications would have to be filed with the Nuclear Regulatory Commission and the New York State Board on Electric Generation Siting and the Environment.

If you have any questions, please call us.

Very truly yours,

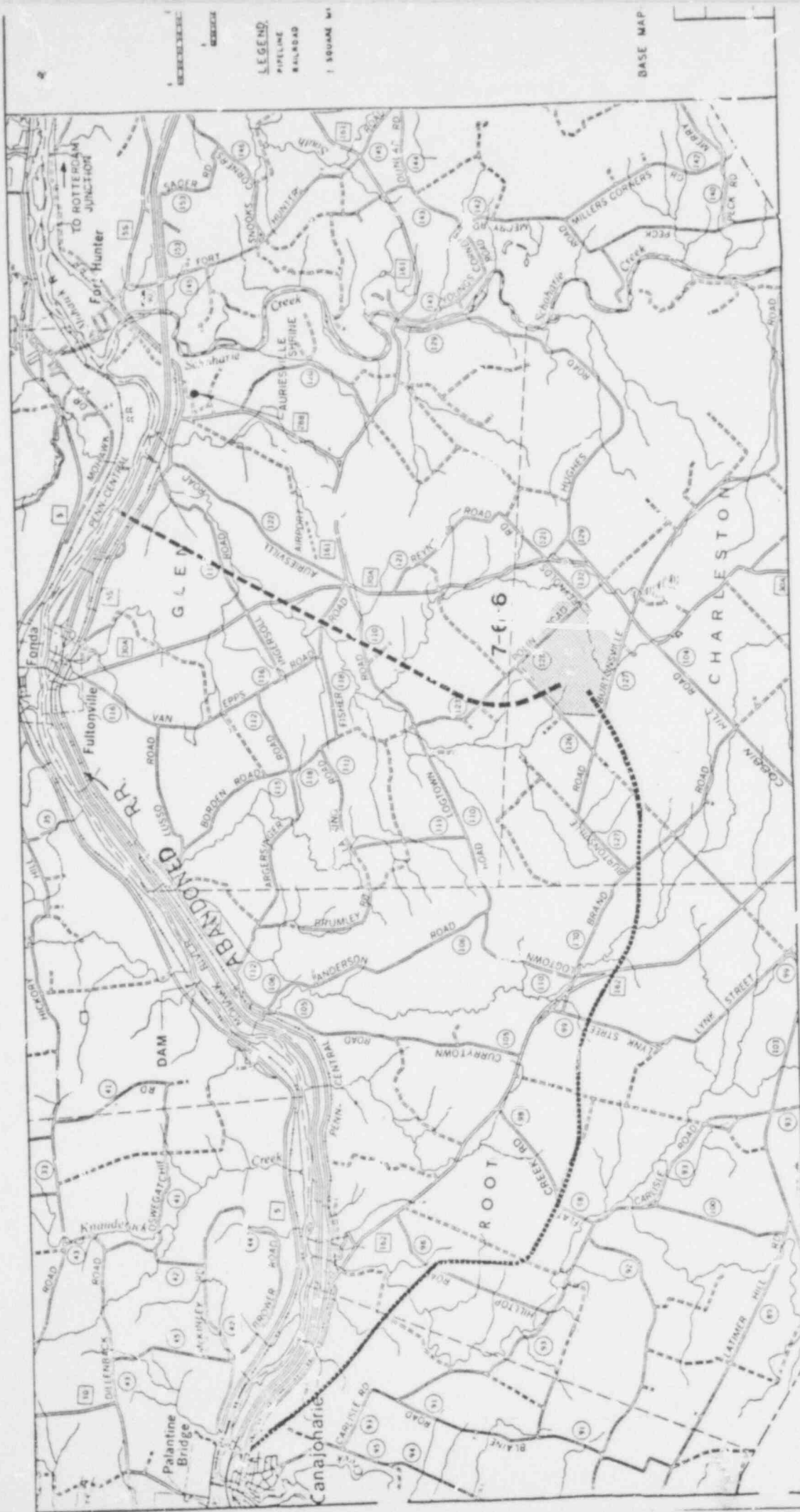


A. E. Kintigh
Vice President - Generation

AEK/TJH/lh

Attachments

419 326



LEGEND
PIPELINE
RAILROAD
1 SQUARE MILE

BASE MAP

419 320



419 328

FIGURE 2.2-1

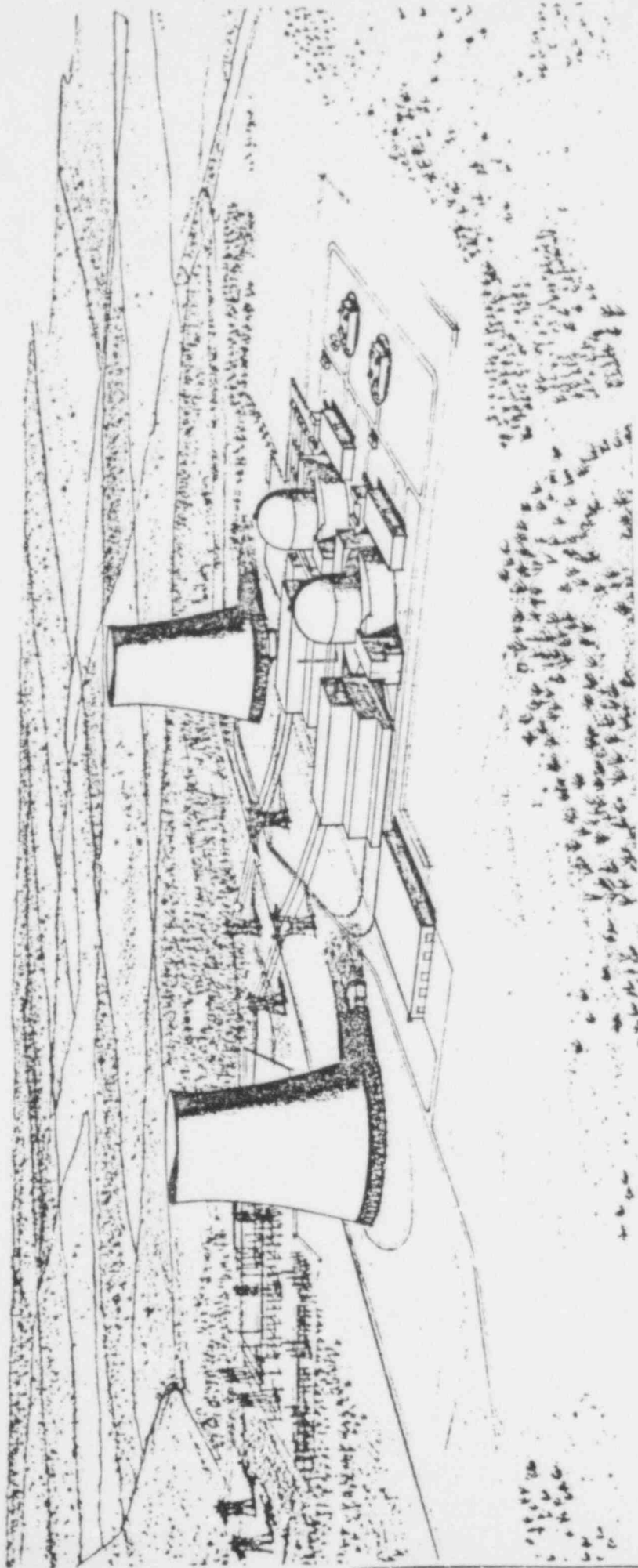


FIGURE 3.1-12 NEW HAVEN SITE
PERSPECTIVE VIEW OF SITE AREA
LOOKING NORTHWEST
NEW YORK STATE ELECTRIC & GAS CORPORATION
ENVIRONMENTAL REPORT

419 328

NEW YORK STATE ELECTRIC & GAS CORPORATION

BINGHAMTON, NEW YORK 13902

March 12, 1979

NYMISC - E048
File No. T4.2P4

William Sherman
Town Supervisor
R.D. #1
Gansevoort, New York 12831

SUBJECT: New Haven 1 and 2
Docket Nos. STN50-596 and STN50-597
Alternate Site Identification

Dear Mr. Sherman:

On November 22, 1978, New York State Electric & Gas Corporation and Long Island Lighting Company filed applications for permits to construct a 2500-megawatt nuclear power plant in the Town of New Haven. The proposed site is located near Lake Ontario in Oswego County, approximately 9 miles east of the City of Oswego and 30 miles north of Syracuse. The application to the New York State Board on Electric Generation Siting and the Environment identifies a preferred alternate site in the Town of Stuyvesant on the Hudson River, approximately 12 miles south of Albany. In recent proceedings before the Nuclear Regulatory Commission, we have been asked to identify four additional alternate sites for the two-unit nuclear generating station.

I am writing to inform you that a site in the Town of Northumberland, indicated on the attached map, has been designated as an alternate site in response to the NRC request. A figure generally describing the plant and a detailed map of the site boundary are also included. The three remaining alternate sites are near the Susquehanna River, the Mohawk River, and the Lower Hudson River.

A copy of the application to the Nuclear Regulatory Commission and the accompanying Environmental Report, and changes to the document which relate to the alternate sites will be provided to you at your request. The NRC's analysis of the alternative sites will be included in their draft Environmental Statement. We would be glad to provide you with a copy of that report, if you wish, when it is completed this fall, or you can obtain a copy directly from the Nuclear Regulatory Commission.

419 320

Representatives from our Company will be meeting with you in the near future to discuss this proceeding and the alternate site in more detail. If at that time you can identify the type of information you would be interested in, we will make sure that you receive the necessary copies. At a later date if you need additional information or have any questions, please contact:

Mr. M. J. Ray, Manager-Nuclear Projects
New York State Electric & Gas Corporation
4500 Vestal Parkway East
Binghamton, New York 13902
Phone: (607) 729-2551, Ext. 421

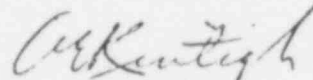
In 1975 and 1976 a statewide survey to identify suitable power plant sites was undertaken. Although the site in your area attracted favorable attention, New Haven and Stuyvesant were announced as the preferred sites in July 1976. A lengthy and detailed study of the environmental, engineering, economic and social characteristics of these two sites was conducted. By April 1978 enough data had been accumulated to decide that New Haven would be the prime and Stuyvesant the alternate site. Upon completion of the studies, the New Haven site was designated as the prime site and Stuyvesant the alternate in our application to the New York State Board on Electric Generation Siting and the Environment for permission to build the plant. An application for a construction permit was made to the NRC for a generating station at the New Haven site.

The NRC has asked for a description of the characteristics of the Northumberland site and the other three alternate sites, using information taken from published reports, maps and a reconnaissance of the areas. As this information is submitted to the NRC, we will be glad to provide you with data concerning the site in your area, if you are interested.

Should any licensing authority believe that the site identified in your town is obviously superior or preferable to the prime site in the Town of New Haven or the alternate site in the Town of Stuyvesant, it would be necessary to conduct substantial additional studies in the Town of Northumberland and in all probability new applications would have to be filed with the Nuclear Regulatory Commission and the New York State Board on Electric Generation Siting and the Environment.

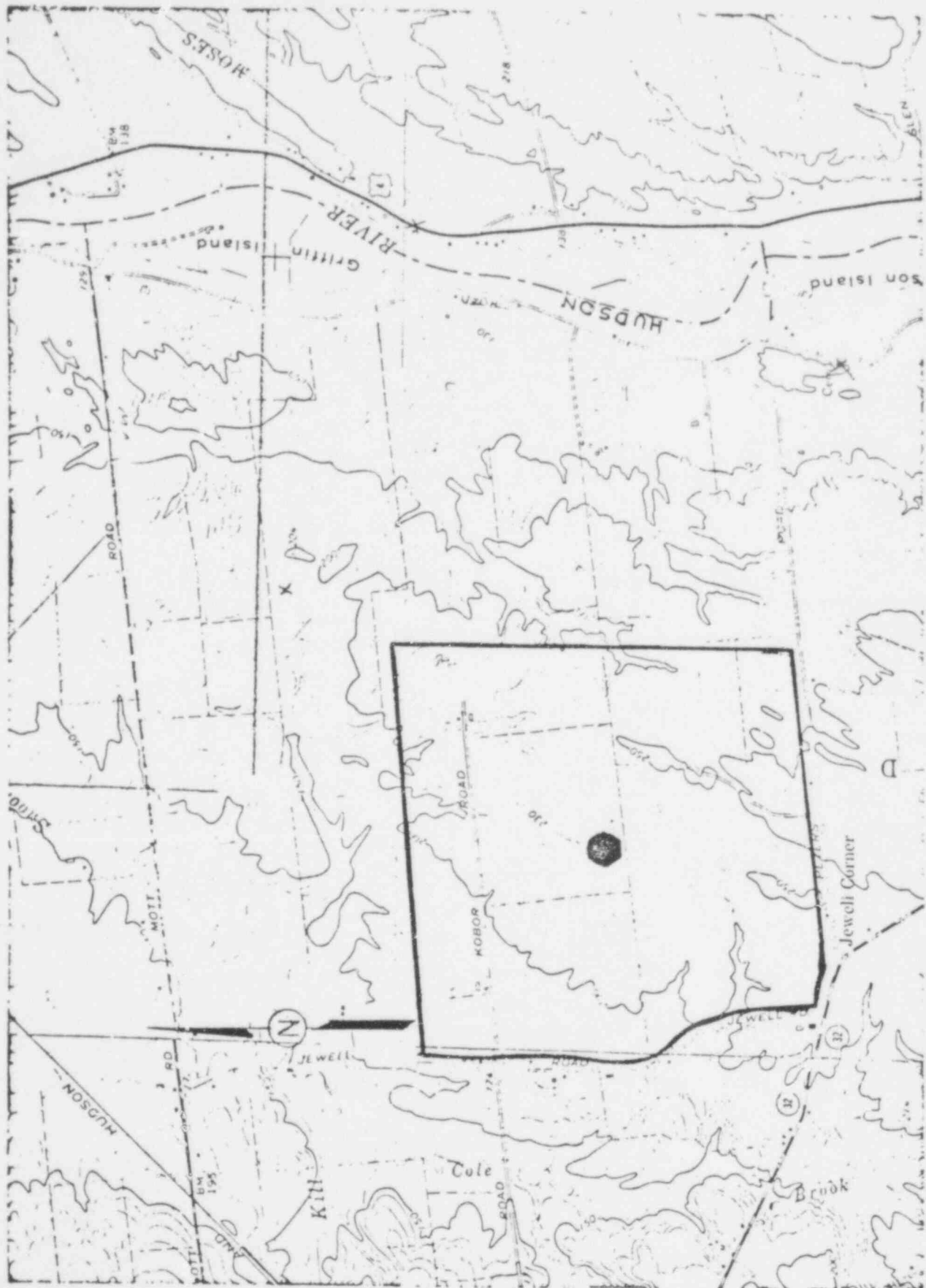
If you have any questions, please call us.

Very truly yours,


A. E. Kintigh
Vice President - Generation

AEK/TJH/lh
Attachments

419 330



419-215 338

Fort Miller (1967)

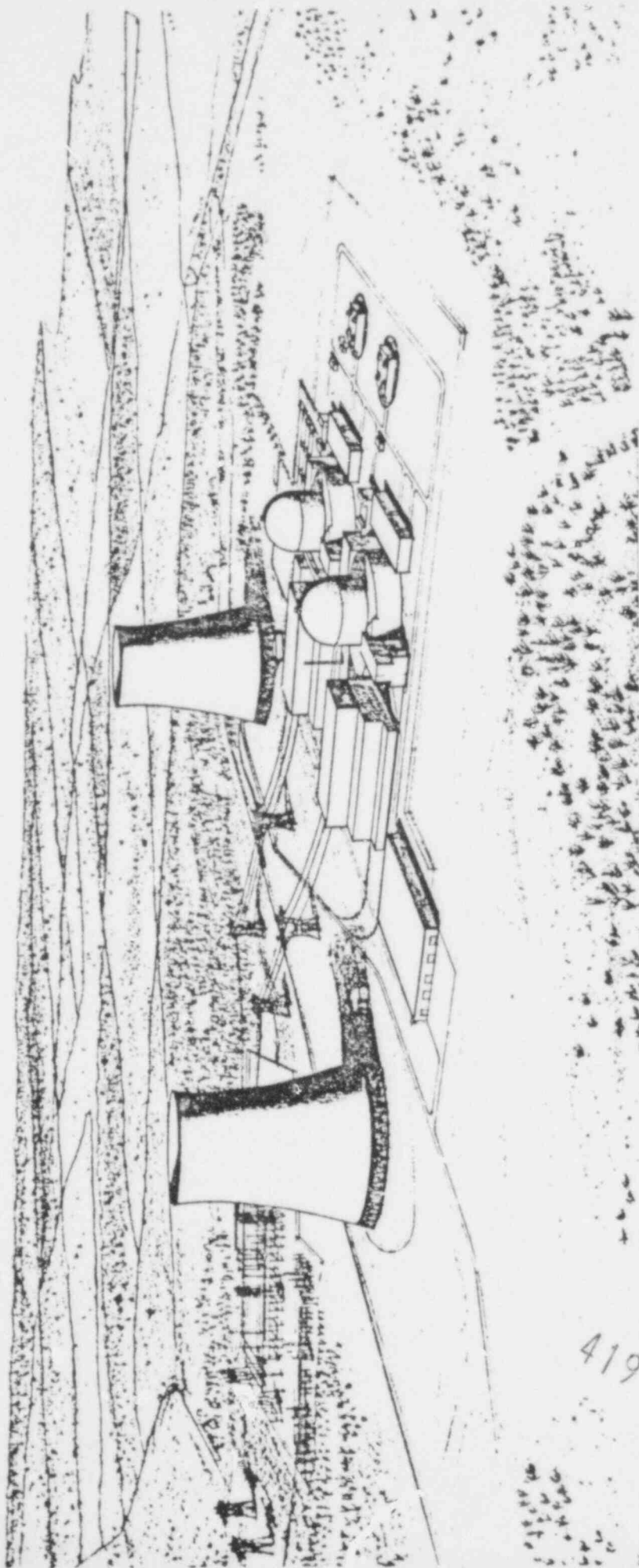


FIGURE 3.1-12 NEW HAVEN SITE

PERSPECTIVE VIEW OF SITE AREA
LOOKING NORTHWEST

NEW YORK STATE ELECTRIC & GAS CORPORATION
ENVIRONMENTAL REPORT

419

339

NEW YORK STATE ELECTRIC & GAS CORPORATION

BINGHAMTON, NEW YORK 13902

March 12, 1979

NYMISC - E048
File No. T4.2P4

William Keeping
Town Supervisor
Minnewaska Trail
Gardiner, New York 12525

SUBJECT: New Haven 1 and 2
Docket Nos. STN50-596 and STN50-597
Alternate Site Identification

Dear Mr. Keeping:

On November 22, 1978, New York State Electric & Gas Corporation and Long Island Lighting Company filed applications for permits to construct a 2500-megawatt nuclear power plant in the Town of New Haven. The proposed site is located near Lake Ontario in Oswego County, approximately 9 miles east of the City of Oswego and 30 miles north of Syracuse. The application to the New York State Board on Electric Generation Siting and the Environment identifies a preferred alternate site in the Town of Stuyvesant on the Hudson River, approximately 12 miles south of Albany. In recent proceedings before the Nuclear Regulatory Commission, we have been asked to identify four additional alternate sites for the two-unit nuclear generating station.

I am writing to inform you that a site in the Town of Gardiner indicated on the attached map has been designated as an alternate site in response to the NRC request. A figure generally describing the plant and a detailed map of the site boundary are also included. The three remaining alternate sites are near the Upper Hudson River, the Susquehanna River, and the Mohawk River.

A copy of the application to the Nuclear Regulatory Commission and the accompanying Environmental Report, and changes to the document which relate to the alternate sites will be provided to you at your request. The NRC's analysis of the alternative sites will be included in their draft Environmental Statement. We would be glad to provide you with a copy of that report, if you wish, when it is completed this fall, or you can obtain a copy directly from the Nuclear Regulatory Commission.

419 335

Representatives from our Company will be meeting with you in the near future to discuss this proceeding and the alternate site in more detail. If at that time you can identify the type of information you would be interested in, we will make sure that you receive the necessary copies. At a later date if you need additional information or have any questions, please contact:

Mr. M. J. Ray, Manager-Nuclear Projects
New York State Electric & Gas Corporation
4500 Vestal Parkway East
Binghamton, New York 13902
Phone: (607) 729-2551, Ext. 421

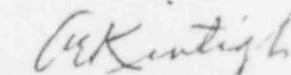
In 1975 and 1976 a statewide survey to identify suitable power plant sites was undertaken. Although the site in your area attracted favorable attention, New Haven and Stuyvesant were announced as the preferred sites in July 1976. A lengthy and detailed study of the environmental, engineering, economic and social characteristics of these two sites was conducted. By April 1978 enough data had been accumulated to decide that New Haven would be the prime and Stuyvesant the alternate site. Upon completion of the studies, the New Haven site was designated as the prime site and Stuyvesant the alternate in our application to the New York State Board on Electric Generation Siting and the Environment for permission to build the plant. An application for a construction permit was made to the NRC for a generating station at the New Haven site.

The NRC has asked for a description of the characteristics of the Gardiner site and the other three alternate sites, using information taken from published reports, maps and a reconnaissance of the areas. As this information is submitted to the NRC, we will be glad to provide you with data concerning the site in your area, if you are interested.

Should any licensing authority believe that the site identified in your town is obviously superior or preferable to the prime site in the Town of New Haven or the alternate site in the Town of Stuyvesant, it would be necessary to conduct substantial additional studies in the Town of Gardiner and in all probability new applications would have to be filed with the Nuclear Regulatory Commission and the New York State Board on Electric Generation Siting and the Environment.

If you have any questions, please call us.

Very truly yours,

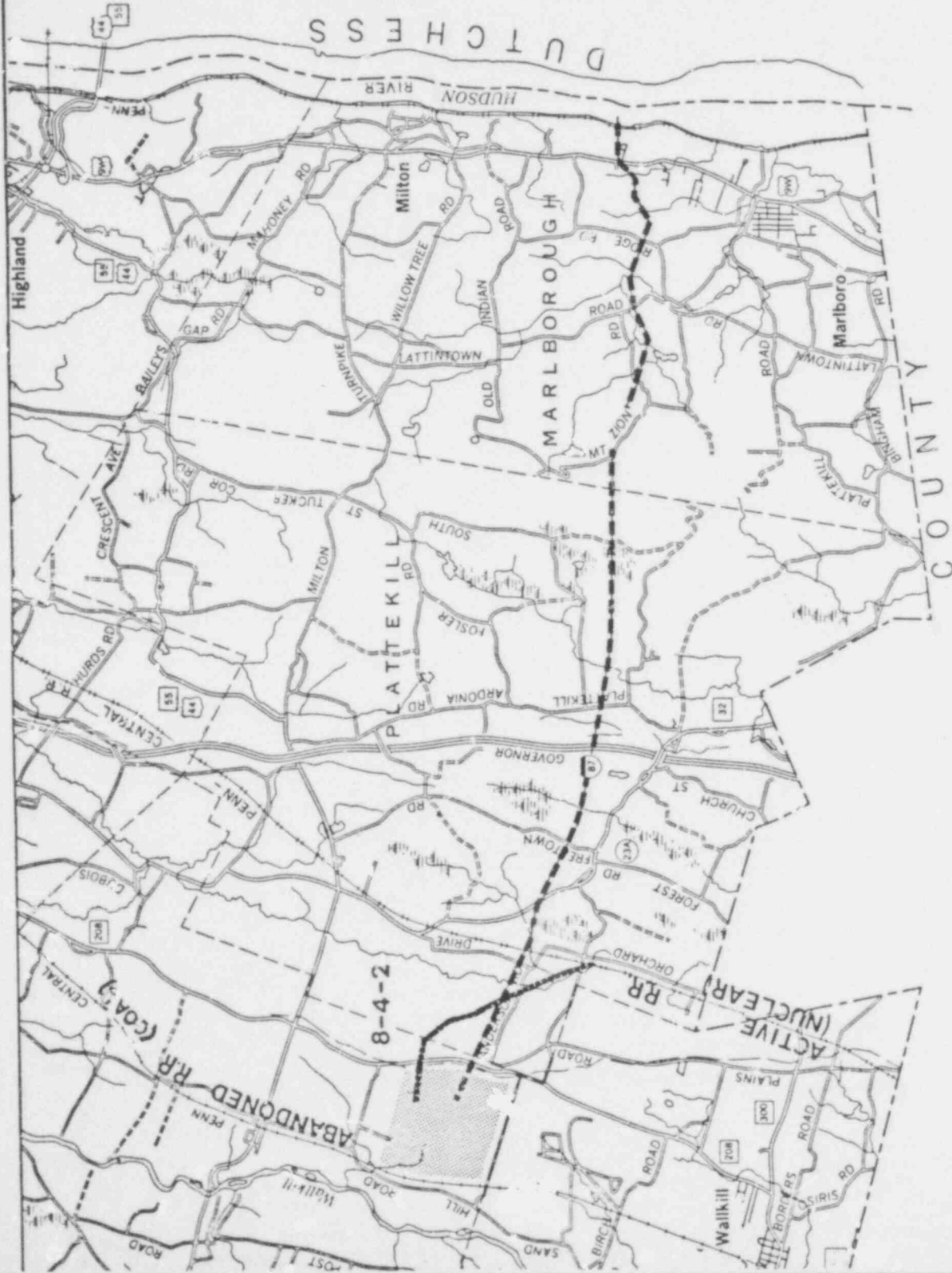


A. E. Kintigh
Vice President - Generation

AEK/TJH/Jh

Attachments

419 336



LEGEND

PIPELINE
RAILROAD

1 SQUARE MILE SITE AS EVALUATED

BASE MAP-NYS ULSTER COUNTY MAP.

NEW YORK STATE ELECTRIC & GAS CORPORATION
NEW SITE SELECTION STUDY

RAILROAD & PIPELINE ROUTING
SITE 8-4-2 (HUDSON RIVER
NUCLEAR AND COAL PLANT

FIGURE V-

619

330



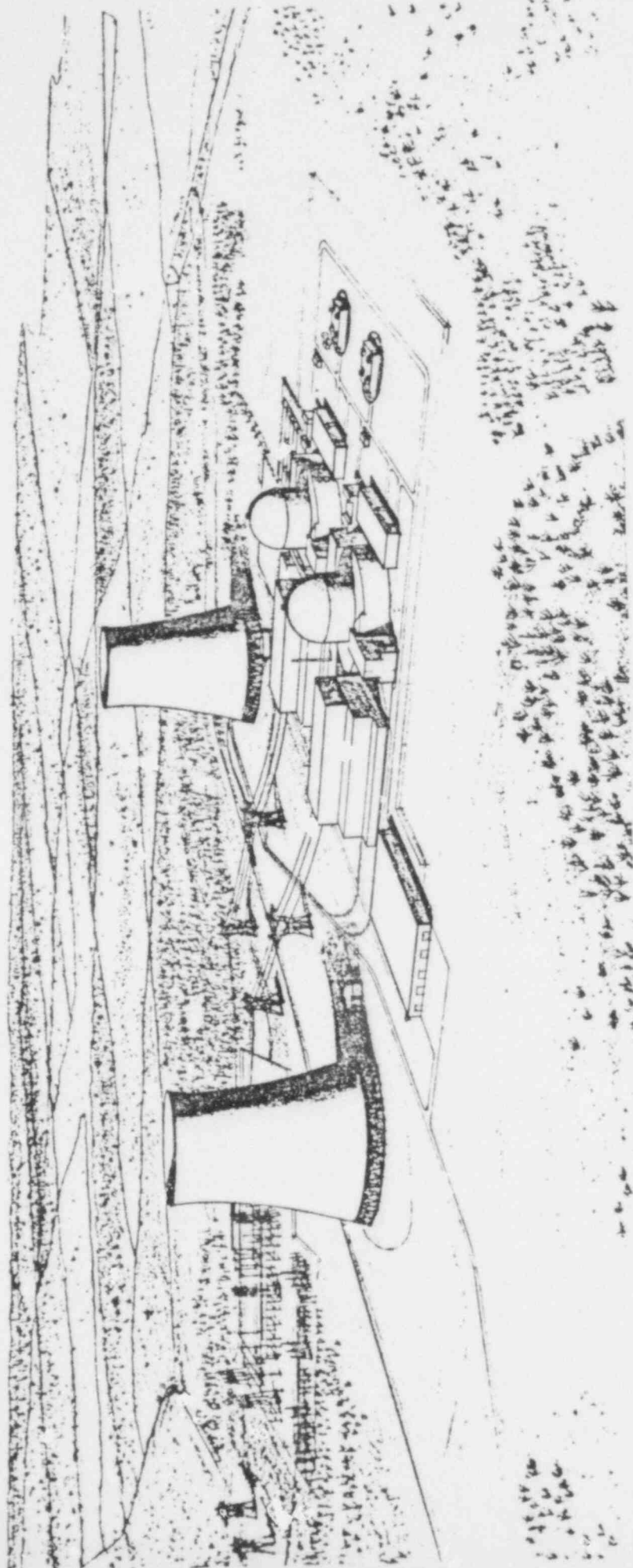


FIGURE 3.1-12 NEW HAVEN SITE
PERSPECTIVE VIEW OF SITE AREA
LOOKING NORTHWEST
NEW YORK STATE ELECTRIC & GAS CORPORATION
ENVIRONMENTAL REPORT

419 338

NEW YORK STATE ELECTRIC & GAS CORPORATION

BINGHAMTON, NEW YORK 13902

March 21, 1979

NYMISC - E064
File No. T4.2P4

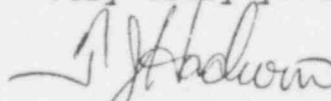
Mr. Edgar M. Dixon
Town Supervisor
317 Chemung Street
Waverly, New York 14892

Dear Mr. Dixon:

Thank you for giving us the opportunity to speak with you and explain why we have identified an alternative power plant site in the Town of Barton. I hope the information we gave you was adequate to answer most of your questions, if not, please call me and I will be glad to answer any additional questions.

In April, we will be sending you a summary description of our site selection process and the reconnaissance level information pertaining to the Barton site. We will continue to notify you of any major events in licensing process which pertain to the Barton site.

Very truly yours,


T. G. Hadwin

TJH/lh

cc: L. L. Staley

419 390

NEW YORK STATE ELECTRIC & GAS CORPORATION

BINGHAMTON, NEW YORK 13902

March 21, 1979

NYMISC - E064
File No. T4.2P4

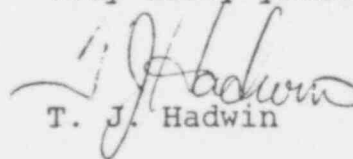
Mr. Calvin Humphrey
Town Supervisor
RD #1, Island Road
Esperance, New York 12066

Dear Mr. Humphrey:

Thank you for giving us the opportunity to speak with you and explain why we have identified an alternative power plant site in the Town of Charleston. I hope the information we gave you was adequate to answer most of your questions, if not, please call me and I will be glad to answer any additional questions.

In April, we will be sending you a summary description of our site selection process and the reconnaissance level information pertaining to the Charleston site. We will continue to notify you of any major events in licensing process which pertain to the Charleston site.

Very truly yours,


T. J. Hadwin

TJH/lh

cc: L. L. Staley

419 340

NEW YORK STATE ELECTRIC & GAS CORPORATION

BINGHAMTON, NEW YORK 17902

March 21, 1979

NYMISC - E063
File No. T4.2P4

Mr. William Sherman
Town Supervisor
RD #1
Gansevoort, New York 12831

Dear Mr. Sherman:

Thank you for giving us the opportunity to speak with you and explain why we have identified an alternative power plant site in the Town of Northumberland. I hope the information we gave you was adequate to answer most of your questions, if not, please call me and I will be glad to answer any additional questions.

In April, we will be sending you a summary description of our site selection process and the reconnaissance level information pertaining to the Northumberland site. We will continue to notify you of any major events in licensing process which pertain to the Northumberland site.

Very truly yours,

L L Staley
L. L. Staley

LLS/TJH/lh

cc: T. J. Hadwin

412 342

NEW YORK STATE ELECTRIC & GAS CORPORATION

BINGHAMTON, NEW YORK 13902

March 21, 1979

NYMISC - E063
File No. T4.2P4

Mr. William Keeping
Town Supervisor
Minnewaska Trail
Gardiner, New York 12525

Dear Mr. Keeping:

Thank you for giving us the opportunity to speak with you and explain why we have identified an alternative power plant site in the Town of Gardiner. I hope the information we gave you was adequate to answer most of your questions, if not, please call me and I will be glad to answer any additional questions.

In April, we will be sending you a summary description of our site selection process and the reconnaissance level information pertaining to the Gardiner site. We will continue to notify you of any major events in licensing process which pertain to the Gardiner site.

Very truly yours,

L L Staley
L. L. Staley ^{TJH}

LLS/TJH/lh

cc: T. J. Hadwin

419

~~342~~
343

NEW YORK STATE ELECTRIC & GAS CORPORATION

BINGHAMTON, NEW YORK 13902

March 21, 1979

NYMISC - E064
File No. T4.2P4

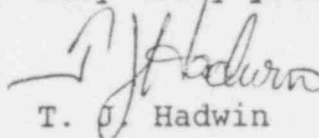
Mr. Devito
County Administrator
Montgomery County
Office Building
Fonda, New York 12068

Dear Mr. DeVito:

Thank you for giving us the opportunity to speak with you and explain why we have identified an alternative power plant site in the Town of Charleston. I hope the information we gave you was adequate to answer most of your questions, if not, please call me and I will be glad to answer any additional questions.

In April, we will be sending you a summary description of our site selection process and the reconnaissance level information pertaining to the Charleston site. We will continue to notify you of any major events in licensing process which pertain to the Charleston site.

Very truly yours,


T. J. Hadwin

TJH/lh

cc: L. L. Staley

419 349

FOR IMMEDIATE RELEASE

New York State Electric & Gas Corporation said today that it has been asked by the Nuclear Regulatory Commission (NRC) to identify four locations which can serve as alternates to the two the utility has already chosen as possible sites for a proposed nuclear generating station.

Allen E. Kintigh, the Company's vice president--generation, said that one of these alternate sites lies in the Town of Barton, Tioga County, which is two miles north of the Susquehanna River and 25 miles west of Binghamton. Mr. Kintigh said he has notified Edgar M. Dixon, Town Supervisor for Barton, that the Barton site is under consideration. The three other alternate sites are near the Hudson and Mohawk rivers.

Mr. Kintigh emphasized that in designating these alternates NYSEG is merely complying with NRC requirements and has no wish to build the plant there. Instead, he said, the Company's firm plan is to locate the 2,500-megawatt nuclear plant in the Town of New Haven near Lake Ontario and nine miles east of Oswego. Its preferred alternate site lies within the Town of Stuyvesant near the Hudson River and north of the City of Hudson.

"New Haven and Stuyvesant are the two sites where we have serious intentions," said Mr. Kintigh. He pointed out that NYSE&G and Long Island Lighting Company, its partner in this project, chose those two after conducting a statewide site search from May 1975 to July 1976. The two companies then performed more than a year of environmental, engineering, economic and social studies at the two sites before making New Haven their first choice and Stuyvesant their second in April 1978. The companies included both sites in their application last November to the New York State Board on Electric Generation Siting and the Environment for permission to build the nuclear plant. They cited New Haven in their application to the NRC last November.

By contrast, said Mr. Kintigh, "no extensive studies have been carried out in Barton or at the other three alternate sites. At present therefore only New Haven or Stuyvesant can be licensed as power plant sites."

However, he explained, these four alternate sites will enable the NRC staff to conduct their own independent site analysis. "We are confident that, after completing their evaluation, the NRC staff will reaffirm our selection of New Haven as a good power plant site," he said.

Anyone wishing to receive more information about the power plant project or the Barton site should contact Michael J. Ray, manager--nuclear projects, NYSE&G, 4500 Vestal Parkway East, Binghamton, New York 13902.

The two utilities hope to start construction of the plant in 1982 and to complete the first 1,250-megawatt generating unit in 1991 and the second 1,250-megawatt unit in 1993.

419 346

FOR IMMEDIATE RELEASE

New York State Electric & Gas Corporation said today that it has been asked by the Nuclear Regulatory Commission (NRC) to identify four locations which can serve as alternates to the two the utility has already chosen as possible sites for a proposed nuclear generating station.

Allen E. Kintigh, the Company's vice president--generation, said that one of these alternate sites lies in the Town of Charleston, Montgomery County, which is seven miles south of the Mohawk River and 13 miles southwest of Amsterdam. Mr. Kintigh said he has notified Calvin Humphrey, Town Supervisor for Charleston, that the Charleston site is under consideration. Two of the three other alternate sites are near the Hudson River and one is near the Susquehanna River.

Mr. Kintigh emphasized that in designating these alternates NYSEG is merely complying with NRC requirements and has no wish to build the plant there. Instead, he said, the Company's firm plan is to locate the 2,500-megawatt nuclear plant in the Town of New Haven near Lake Ontario and nine miles east of Oswego. Its preferred alternate site lies within the Town of Stuyvesant near the Hudson River and north of the City of Hudson. 419 348

"New Haven and Stuyvesant are the two sites where we have serious intentions," said Mr. Kintigh. He pointed out that NYSE&G and Long Island Lighting Company, its partner in this project, chose those two after conducting a statewide site search from May 1975 to July 1976. The two companies then performed more than a year of environmental, engineering, economic and social studies at the two sites before making New Haven their first choice and Stuyvesant their second in April 1978. The companies included both sites in their application last November to the New York State Board on Electric Generation Siting and the Environment for permission to build the nuclear plant. They cited New Haven in their application to the NRC last November.

By contrast, said Mr. Kintigh, "no extensive studies have been carried out in Charleston or at the other three alternate sites. At present therefore only New Haven or Stuyvesant can be licensed as power plant sites."

However, he explained, these four alternate sites will enable the NRC staff to conduct their own independent site analysis. "We are confident that, after completing their evaluation, the NRC staff will reaffirm our selection of New Haven as a good power plant site," he said.

Anyone wishing to receive more information about the power plant project or the Charleston site should contact Michael J. Ray, manager--nuclear projects, NYSE&G, 4500 Vestal Parkway East, Binghamton, New York 13902.

The two utilities hope to start construction of the plant in 1982 and to complete the first 1,250-megawatt generating unit in 1991 and the second 1,250-megawatt unit in 1993.

FOR IMMEDIATE RELEASE

New York State Electric & Gas Corporation said today that it has been asked by the Nuclear Regulatory Commission (NRC) to identify four locations which can serve as alternates to the two the utility has already chosen as possible sites for a proposed nuclear generating station.

A. E. Kintigh, the Company's vice president--generation, said that one of these alternate sites lies in the Town of Northumberland, Saratoga County, which is seven miles south of Glens Falls and one mile west of the Hudson River. Mr. Kintigh said he has notified William Sherman, Town Supervisor for Northumberland, that the Northumberland site is under consideration. The three other alternate sites are near the Mohawk, Susquehanna and lower Hudson rivers.

Mr. Kintigh emphasized that in designating these alternates NYSEG is merely complying with NRC requirements and has no wish to build the plant there. Instead, he said, the Company's firm plan is to locate the 2,500-megawatt nuclear plant in the Town of New Haven near Lake Ontario and nine miles east of Oswego. Its

preferred alternate site lies within the Town of Stuyvesant near the Hudson River and north of the City of Hudson.

"New Haven and Stuyvesant are the two sites where we have serious intention," said Mr. Kintigh. He pointed out that NYSEG and Long Island Lighting Company, its partner in this project, chose those two after conducting a statewide site search from May 1975 to July 1976. The two companies then performed more than a year of environmental, engineering, economic and social studies at the two sites before making New Haven their first choice and Stuyvesant their second in April 1978. The companies included both sites in their application last November to the New York State Board on Electric Generation Siting and the Environment for permission to build the nuclear plant. They cited New Haven in their application to the NRC last November.

By contrast, said Mr. Kintigh, "no extensive studies have been carried out in Northumberland or at the other three alternate sites. At present therefore only New Haven or Stuyvesant can be licensed as power plant sites."

However, he explained, these four alternate sites will enable the NRC staff to conduct their own independent site analysis. "We are confident that, after completing their evaluation, the NRC staff will reaffirm our selection of New Haven as a good power plant site," he said.

Anyone wishing to receive more information about the power plant project or the Northumberland site should contact Michael J. Ray, manager--nuclear projects, NYSEG, 4500 Vestal Parkway East, Binghamton, New York 13902.

419 340

The two utilities hope to start construction of the plant in 1982 and to complete the first 1,250-megawatt generating unit in 1991 and the second 1,250-megawatt unit in 1993.

3/1/79

419 359

FOR IMMEDIATE RELEASE

New York State Electric & Gas Corporation said today that it has been asked by the Nuclear Regulatory Commission (NRC) to identify four locations which can serve as alternates to the two the utility has already chosen as possible sites for a proposed nuclear generating station.

Allen E. Kintigh, the Company's vice president--generation, said that one of these alternate sites lies in the Town of Gardiner, Ulster County, which is 10 miles west of the Hudson River and 11 miles west of Poughkeepsie. Mr. Kintigh said he has notified William Keeping, Town Supervisor for Gardiner, that the Gardiner site is under consideration. The three other alternate sites are near the upper Hudson, Susquehanna and Mohawk rivers.

Mr. Kintigh emphasized that in designating these alternates NYSEG is merely complying with NRC requirements and has no wish to build the plant there. Instead, he said, the Company's firm plan is to locate the 2,500-megawatt nuclear plant in the Town of New Haven near Lake Ontario and nine miles east of Oswego. Its preferred alternate site lies within the Town of Stuyvesant near the Hudson River and north of the City of Hudson.

419 352

-more-

"New Haven and Stuyvesant are the two sites where we have serious intentions," said Mr. Kintigh. He pointed out that NYSE&G and Long Island Lighting Company, its partner in this project, chose those two after conducting a statewide site search from May 1975 to July 1976. The two companies then performed more than a year of environmental, engineering, economic and social studies at the two sites before making New Haven their first choice and Stuyvesant their second in April 1978. The companies included both sites in their application last November to the New York State Board on Electric Generation Siting and the Environment for permission to build the nuclear plant. They cited New Haven in their application to the NRC last November.

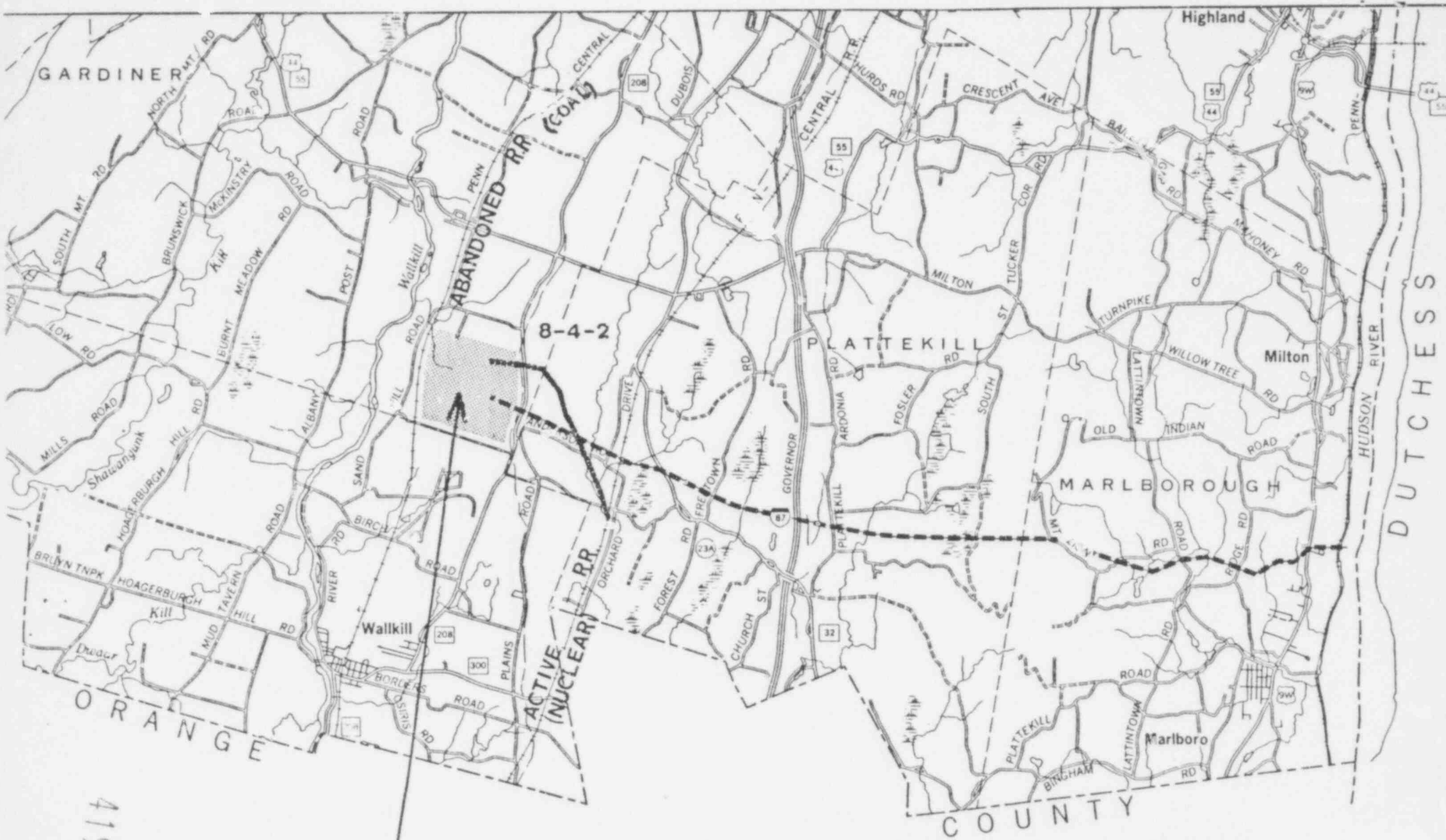
By contrast, said Mr. Kintigh, "no extensive studies have been carried out in Gardiner or at the other three alternate sites. At present therefore only New Haven or Stuyvesant can be licensed as power plant sites."

However, he explained, these four alternate sites will enable the NRC staff to conduct their own independent site analysis. "We are confident that, after completing their evaluation, the NRC staff will reaffirm our selection of New Haven as a good power plant site," he said.

Anyone wishing to receive more information about the power plant project or the Gardiner site should contact Michael J. Ray, manager--nuclear projects, NYSE&G, 4500 Vestal Parkway East, Binghamton, New York 13902.

The two utilities hope to start construction of the plant in 1982 and to complete the first 1,250-megawatt generating unit in 1991 and the second 1,250-megawatt unit in 1993.

3/12/79



Alternate site

Lower Hudson River - Ulster County - Town of Gardiner - #8-4-2

419

354