



## Northern Indiana Public Service Company

Nuclear Staff  
RR # 3, Box 501  
Chesterton, IN 46304  
November 6, 1979

BAILLY GENERATING STATION N-1

Mr. Ronald Ballard  
Environmental Projects Branch No. 1  
Directorate of Licensing  
U.S. Nuclear Regulatory Commission  
Washington, D.C. 20545

RE: NORTHERN INDIANA PUBLIC SERVICE COMPANY  
BAILLY GENERATING STATION NUCLEAR 1  
DOCKET 50-367

Dear Mr. Ballard:

Enclosed herewith are ten (10) copies of the following:

1. Well Charts for 10/16/79 - 10/24/79
2. Bailly Wells Without Recorders for 10/24/79
3. Pond Levels for 10/24/79
4. Pneumatic Pressure Transducers for 10/24/79
5. Water Meter Readings for 10/24/79

Sincerely,

R. J. Bohn  
Manager, Nuclear Staff

*ce:ghk*  
DBY:14

Enclosures

File: Ground Water Observation Monitoring Wells

*Doc  
ES.11*

1354 304

7911190404

POOR ORIGINAL

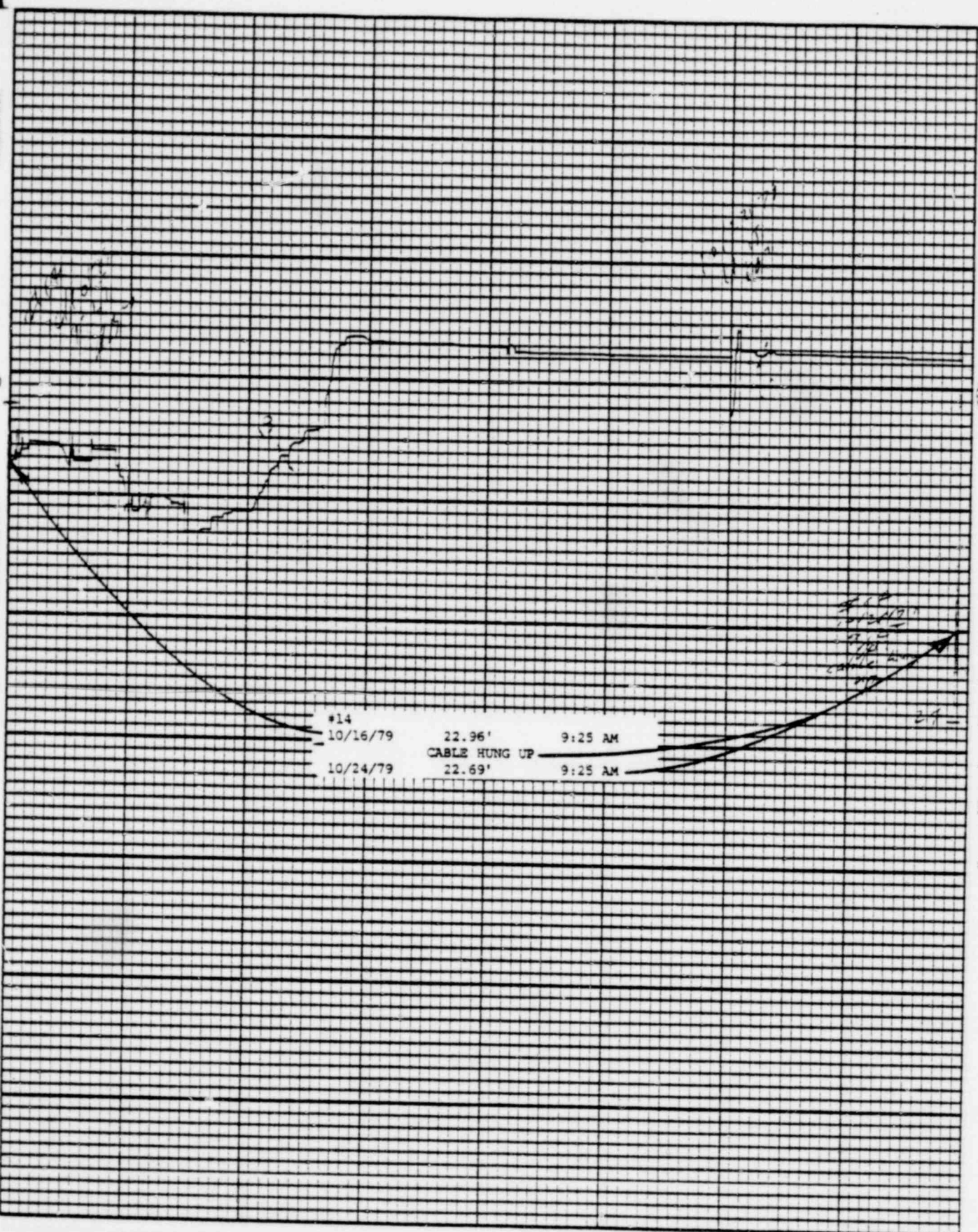
Printed in U.S.A.

Leupold & Stevens, Inc., Beaverlton, Ore.

Chart 8-1

(S)

Stevens Water Level Recorder — Type F



1354 305

POOR ORIGINAL

Printed in U.S.A.

Chart F-1

Leupold & Stevens, Inc., Beaverlton, Ore.



Sievens Water Level Recorder — Type F

26

#15		
10/16/79	11.80'	8:04 AM
10/24/79	11.57'	8:50 AM

10/16/79  
10/24/79  
11.80'  
11.57'

1354 306



POOR ORIGINAL

Printed in U.S.A.

Leupold & Stevens, Inc., Beaverton, Ore.

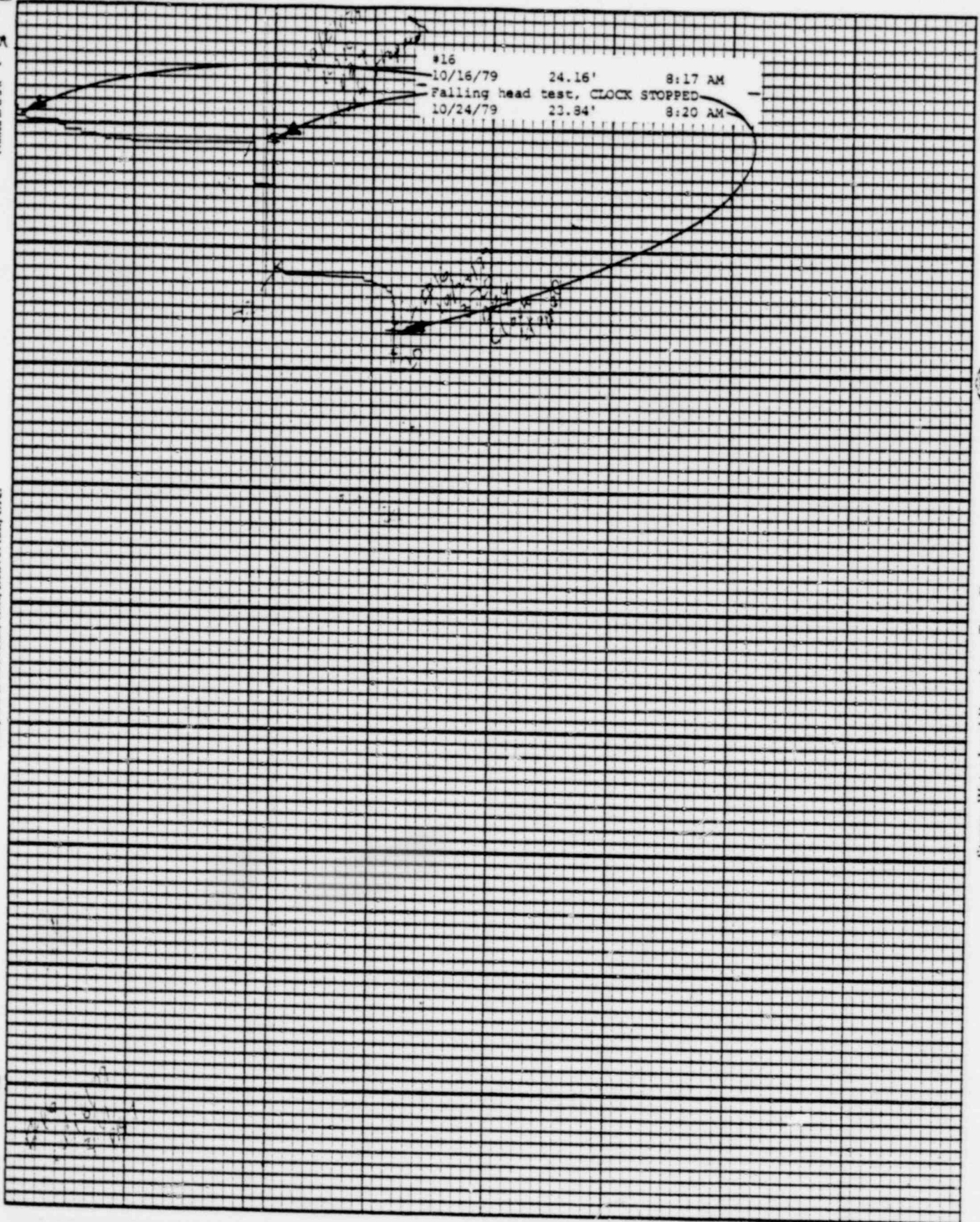


Chart F-1

Stevens Water Level Recorder — Type F

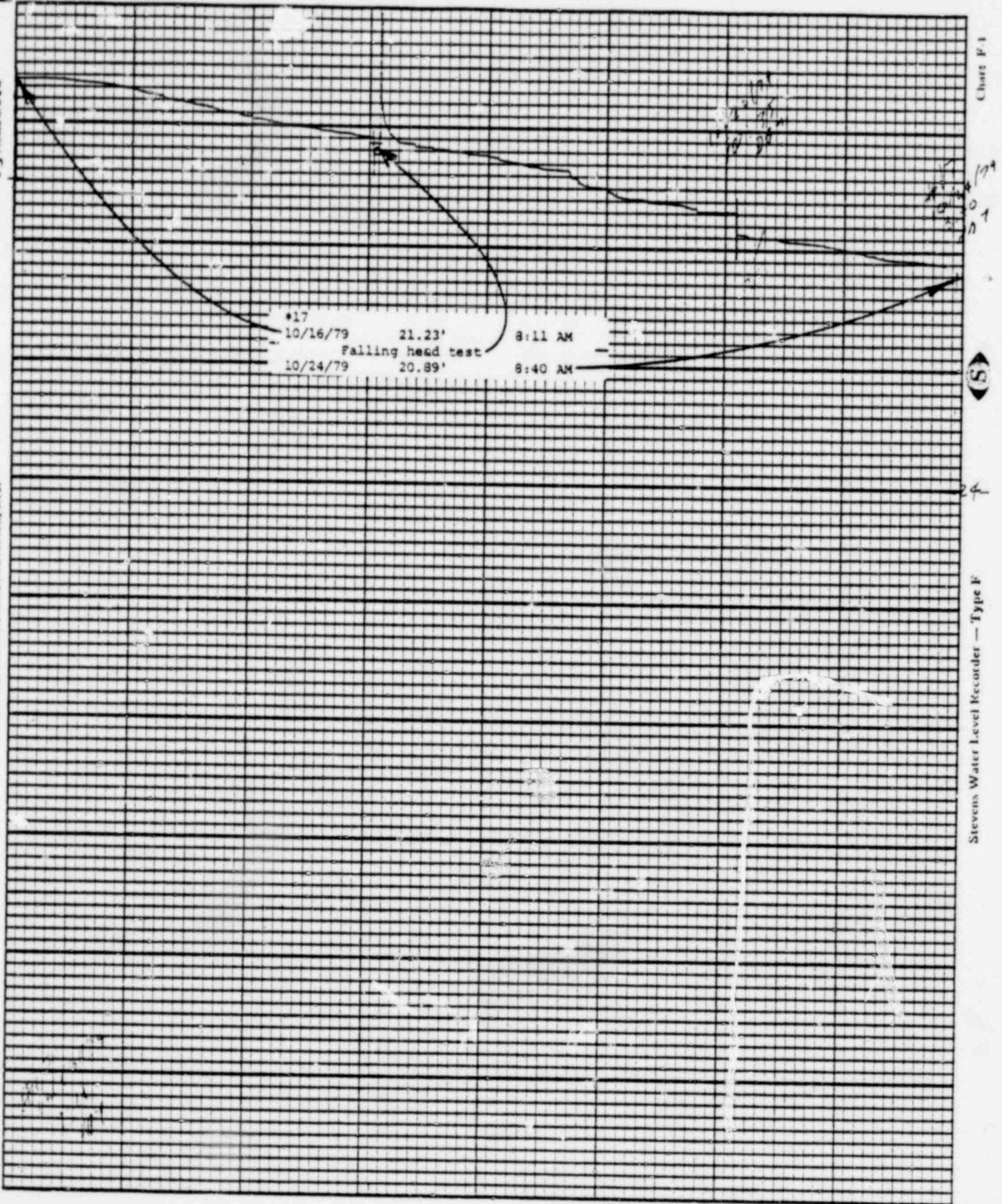
1354 307



POOR ORIGINAL

23 Printed in U.S.A.

Leupold & Stevens, Inc., Beaverlton, Ore.



1354 308

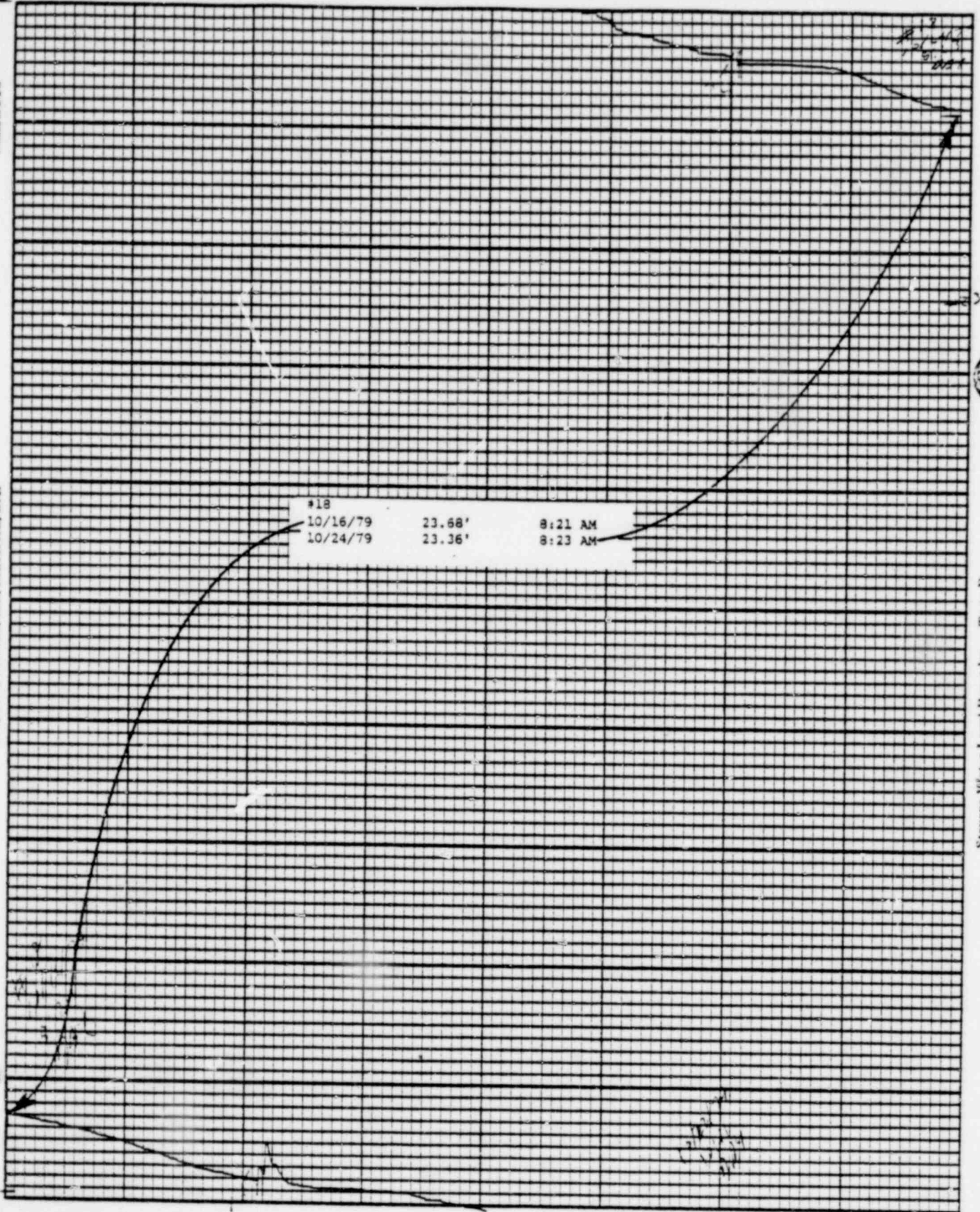
POOR ORIGINAL

Printed in U.S.A.

Leopold & Stevens, Inc., Beaverton, Ore.

Chart F-1

Stevens Water Level Recorder — Type K



1354 309



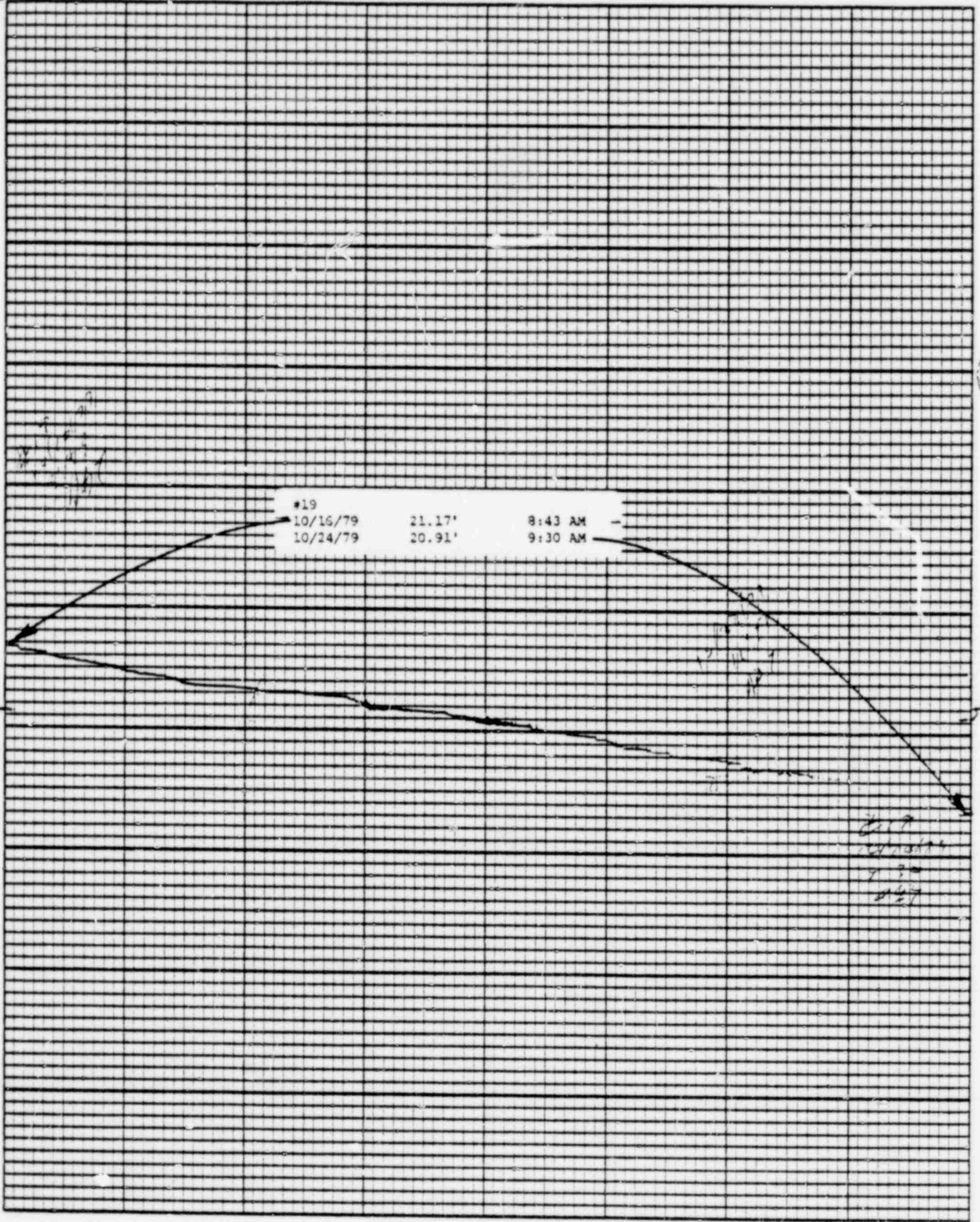
POOR ORIGINAL

Printed on U.S.A.

Leupold & Stevens, Inc., Beaverton, Ore.

Chart P-1

Stevens Water Level Recorder — Type F



1354 310



POOR ORIGINAL

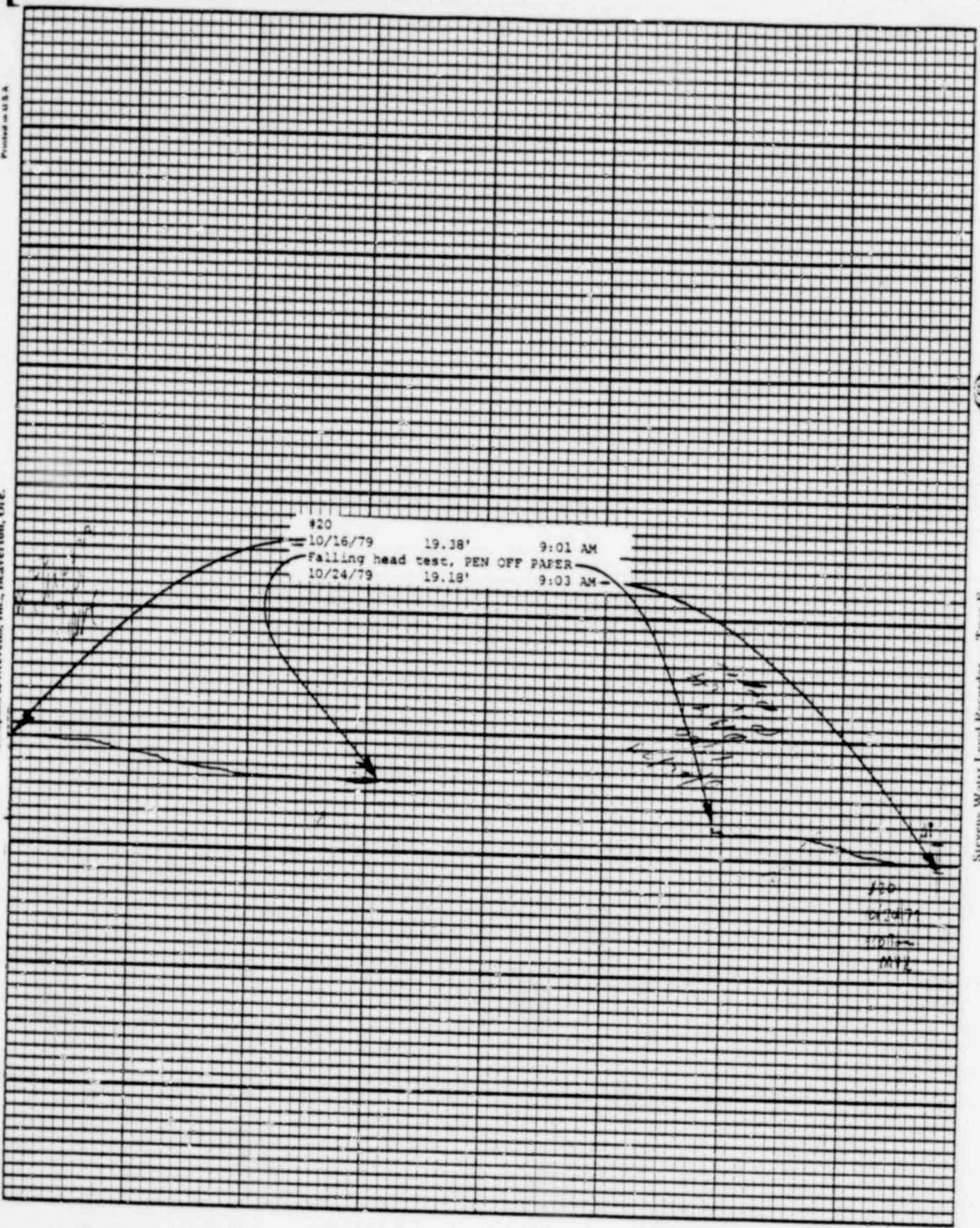
Printed in U.S.A.

Chart F-1

Leupold & Stevens, Inc., Heaverlon, Ore.

(S)

Stevens Water Level Recorder — Type F



POOR ORIGINAL

Printed in U.S.A.

Chart F-1

Leupold & Stevens, Inc., Beaverton, Ore.

Stevens Water Level Recorder — Type F

(5)

#51B  
10/16/79 19.64' 8:55 AM  
Falling head test  
10/24/79 19.52' 8:54 AM

1354 312



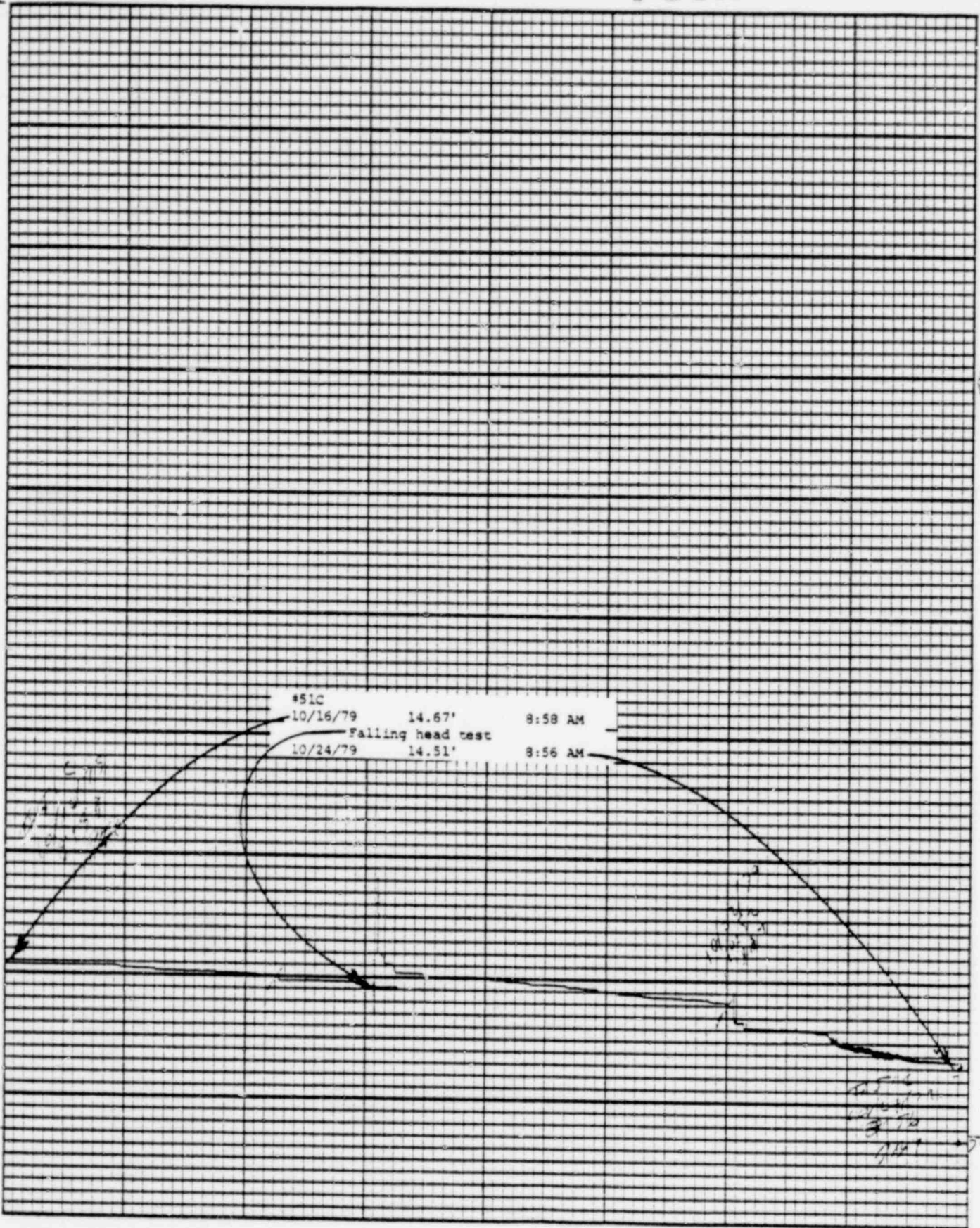
POOR ORIGINAL

Printed in U.S.A.

Leupold & Stevens, Inc., Beaverton, Ore.

Chart P-8

Stevens Water Level Recorder — Type F



1354 313



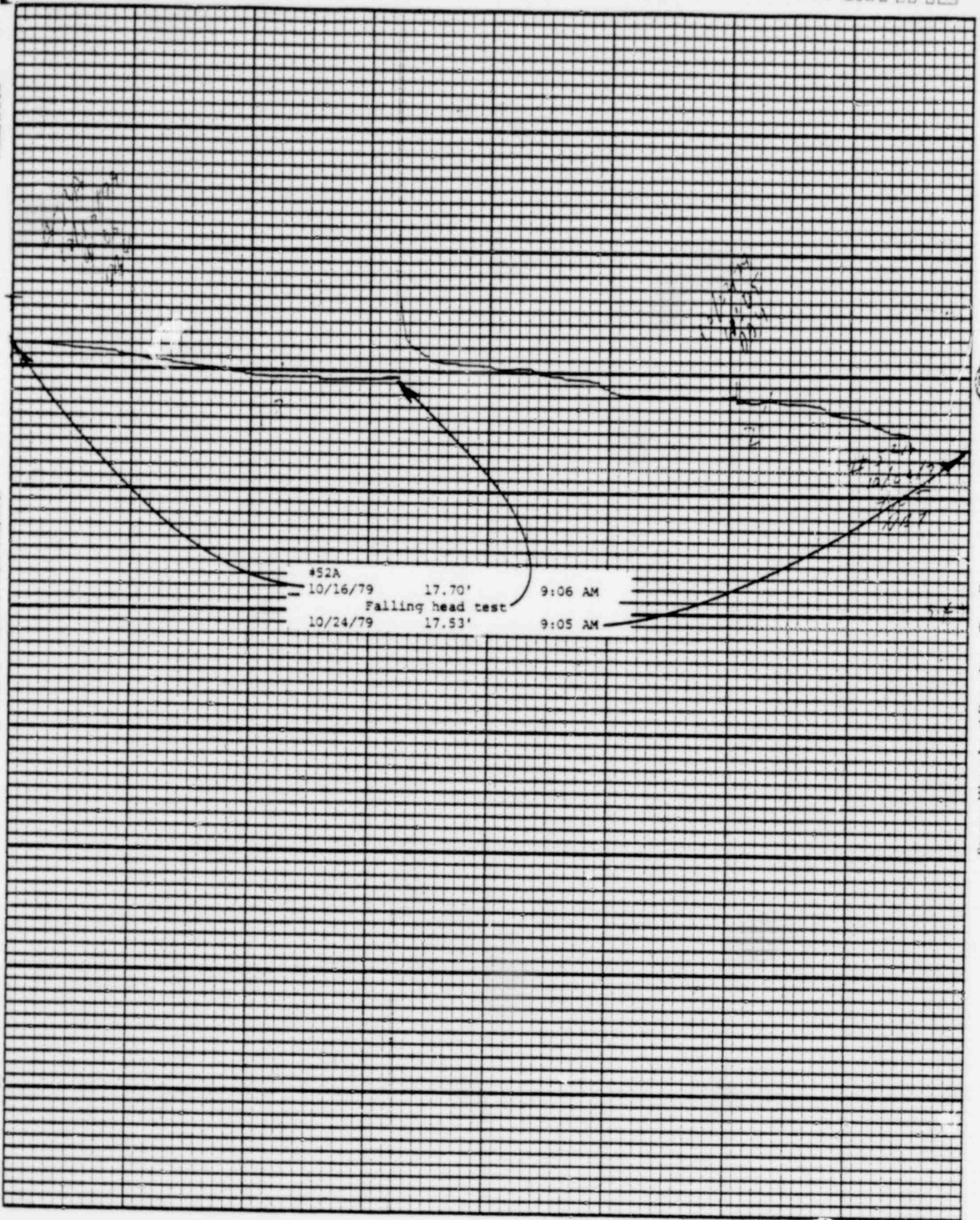
POOR ORIGINAL

Chart P-1

Printed on U.S.A.

Leupold & Stevens, Inc., Beaverton, Ore.

Stevens Water Level Recorder — Type F



1354 314

POOR ORIGINAL

Printed in U.S.A.

Leupold & Stevens, Inc., Beaverton, Ore.

(S)

#52B  
10/16/79 17.23' 9:09 AM  
Falling head test  
10/24/79 17.14' 9:12 AM

Stevens Wire Level Recorder — Type F

#52B  
10/24/79  
17.14'

1354 315



POOR ORIGINAL

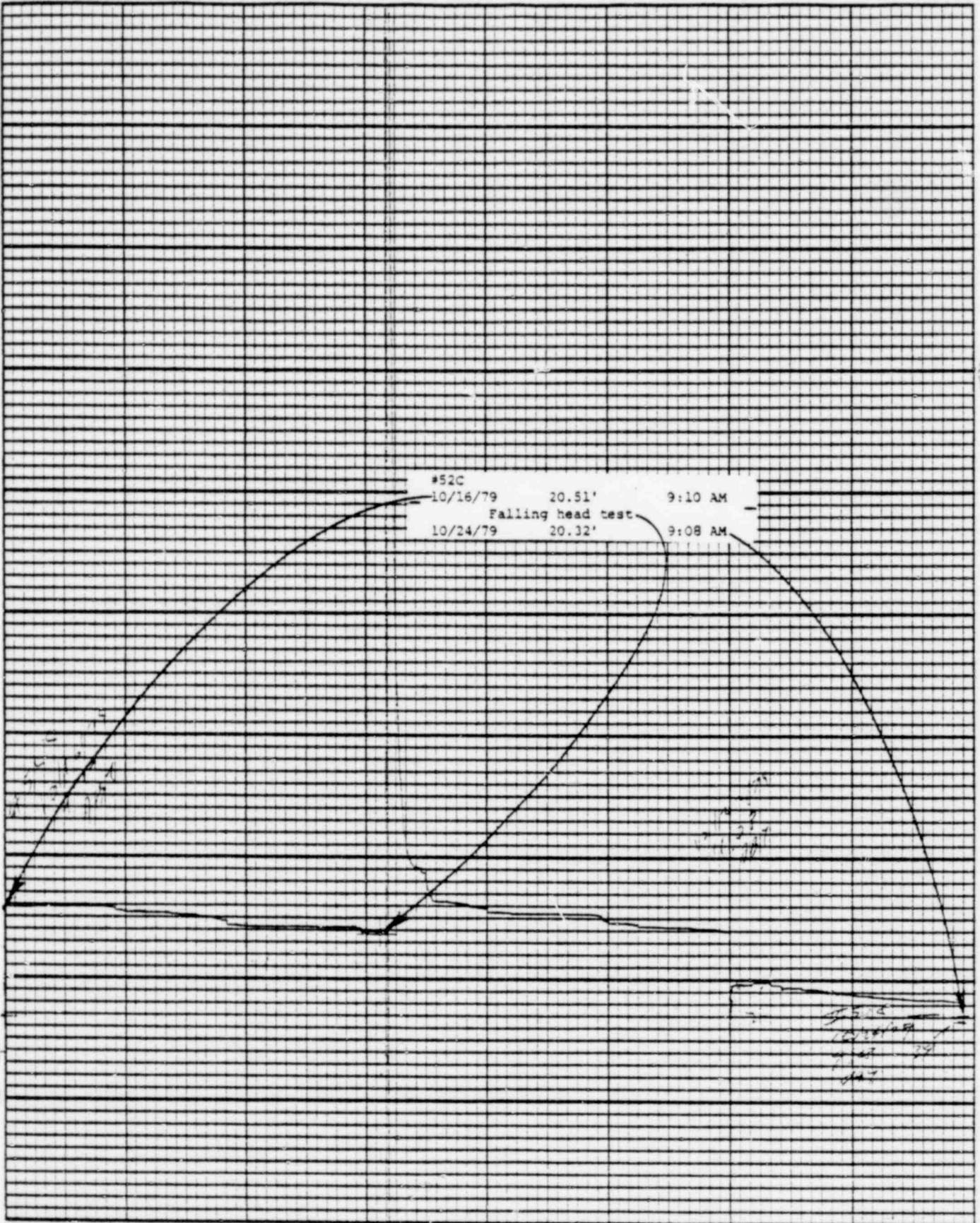
Printed in U.S.A.

Leupold & Stevens, Inc., Beaverlton, Ore.

Chart F-4

(S)

Stevens Water Level Recorder — Type F



1354 316



POOR ORIGINAL

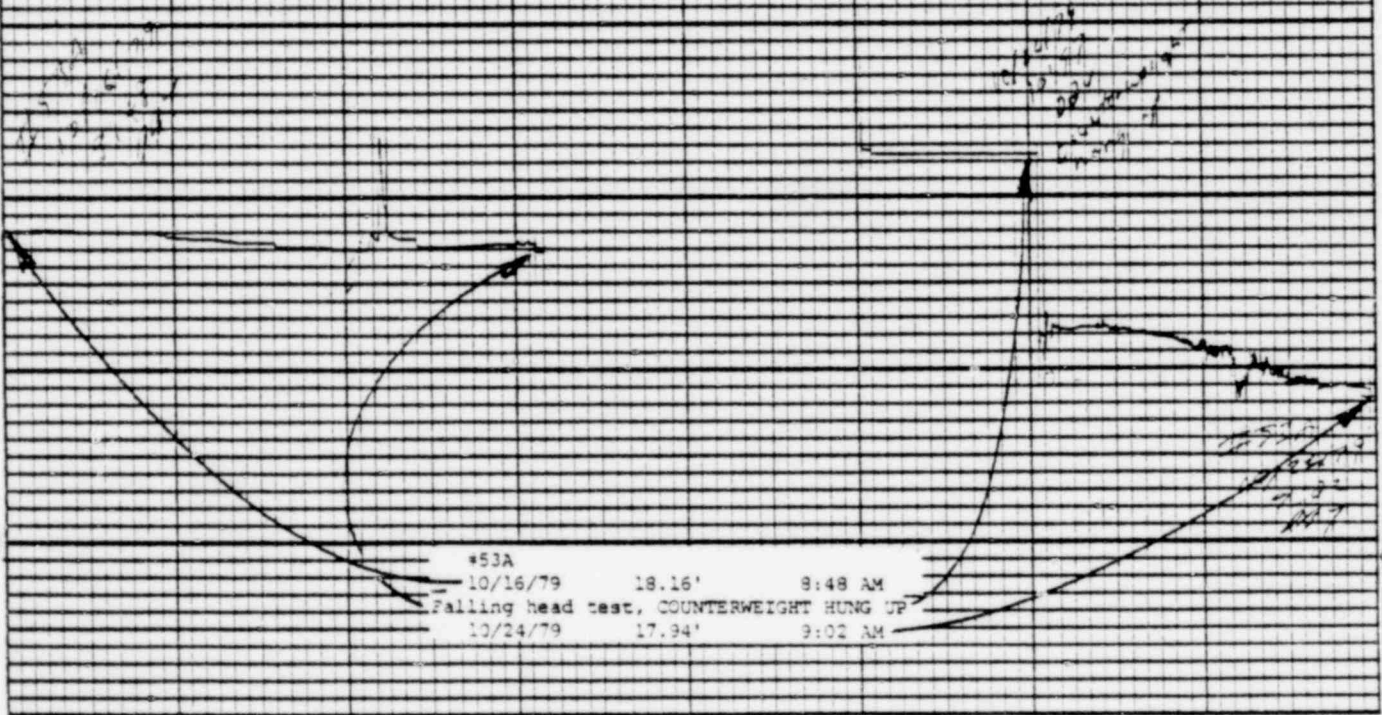
Printed in U.S.A.

Leupold & Stevens, Inc., Beaverlton, Ore.

Chart F-1

(S)

Stevens Water Level Recorder — Type F



1354 317

POOR ORIGINAL

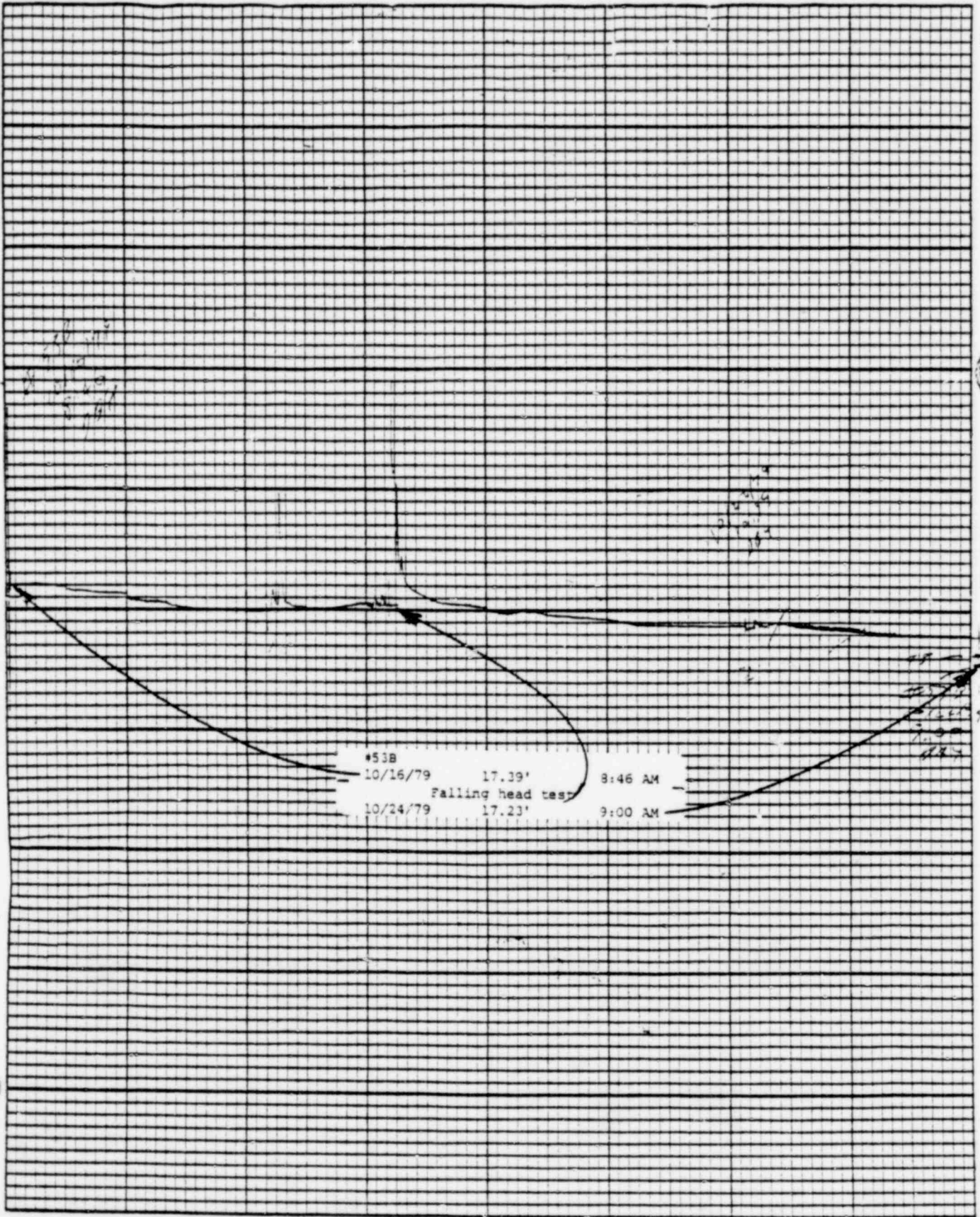
Printed in U.S.A.

Leupold & Stevens, Inc., Heaverton, Ore.

Chart P-1

(S)

Stevens Water Level Recorder - Type F



1354 318



POOR ORIGINAL

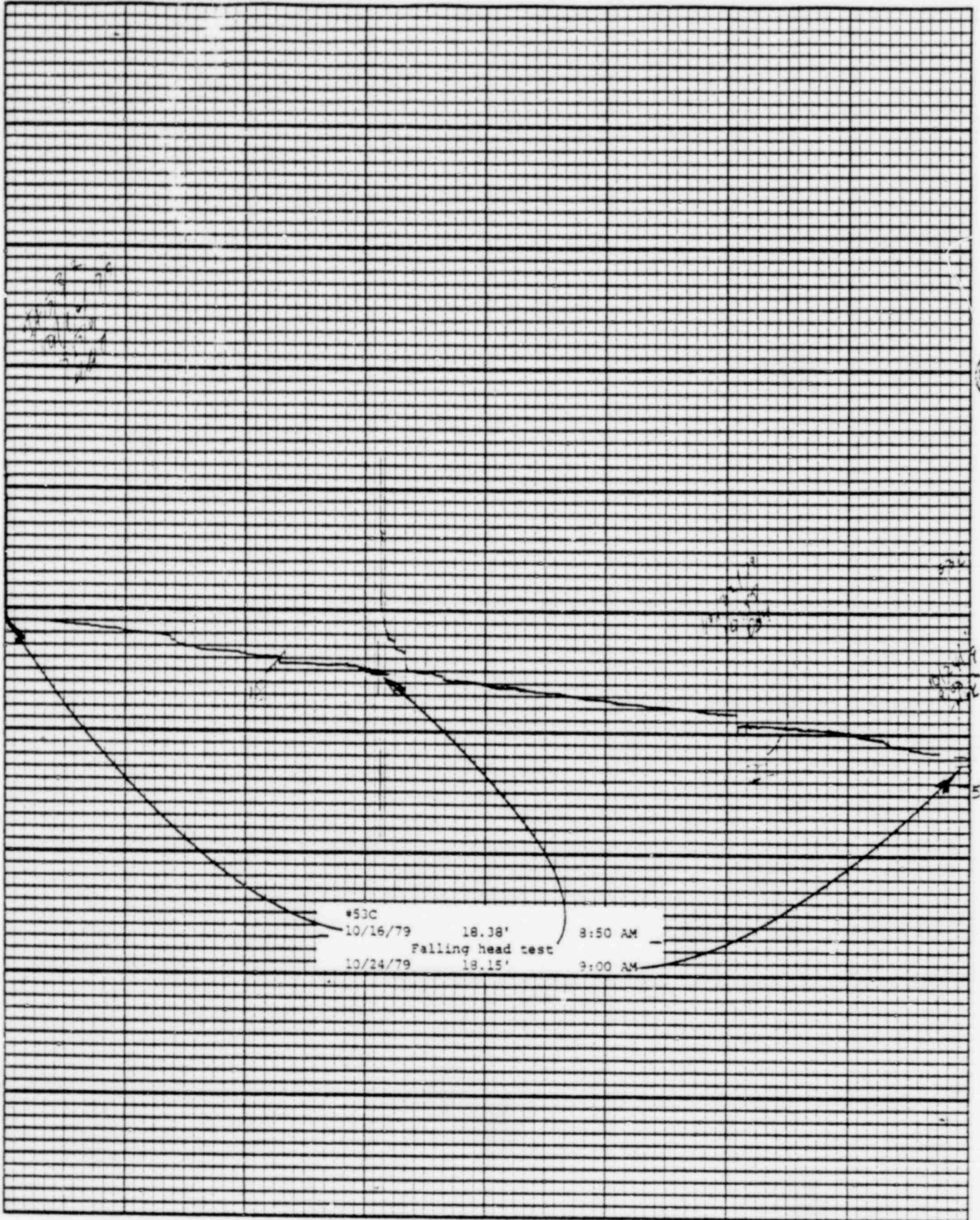
Printed in U.S.A.

Leupold & Stevens, Inc., Beaverton, Ore.

Chart F-1

(S)

Stevens Water Level Recorder — Type F



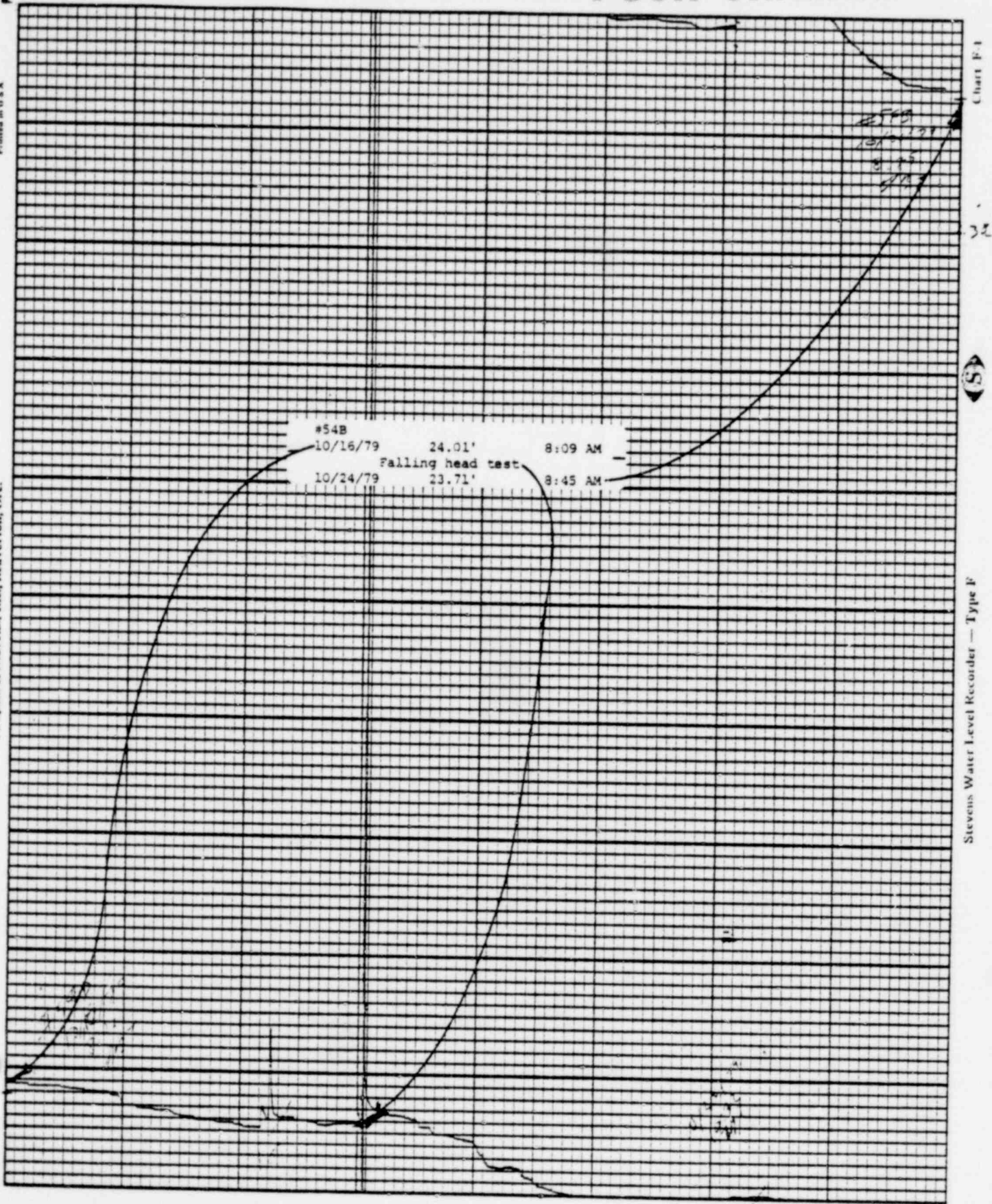
1354 319



POOR ORIGINAL

Printed in U.S.A.

Leupold & Stevens, Inc., Beaverlton, Ohio.

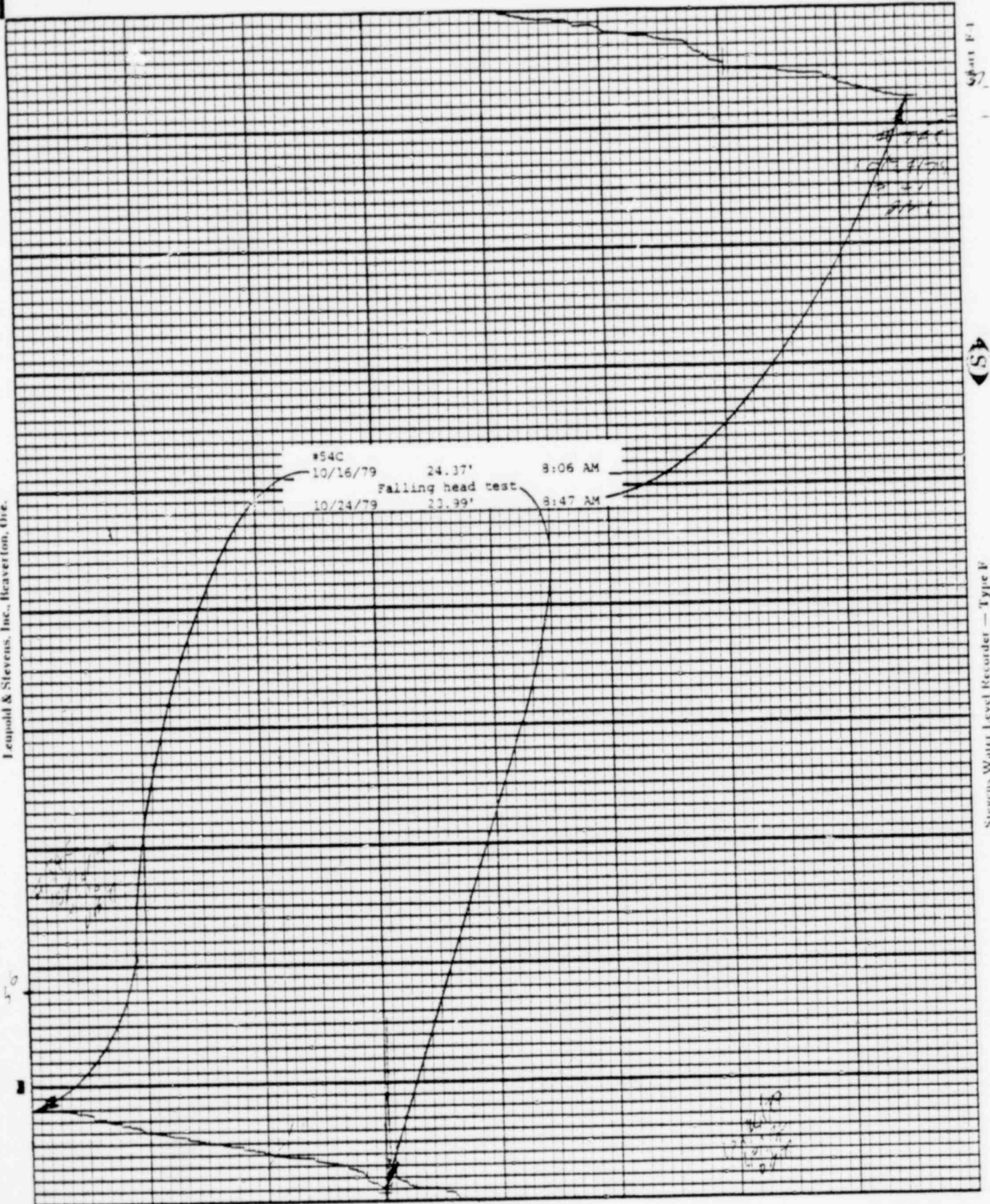


1354 320

POOR ORIGINAL

Printed in U.S.A.

Leupold & Stevens, Inc., Beaver ton, Ore.



Stevens Water Level Recorder — Type F

1354 321

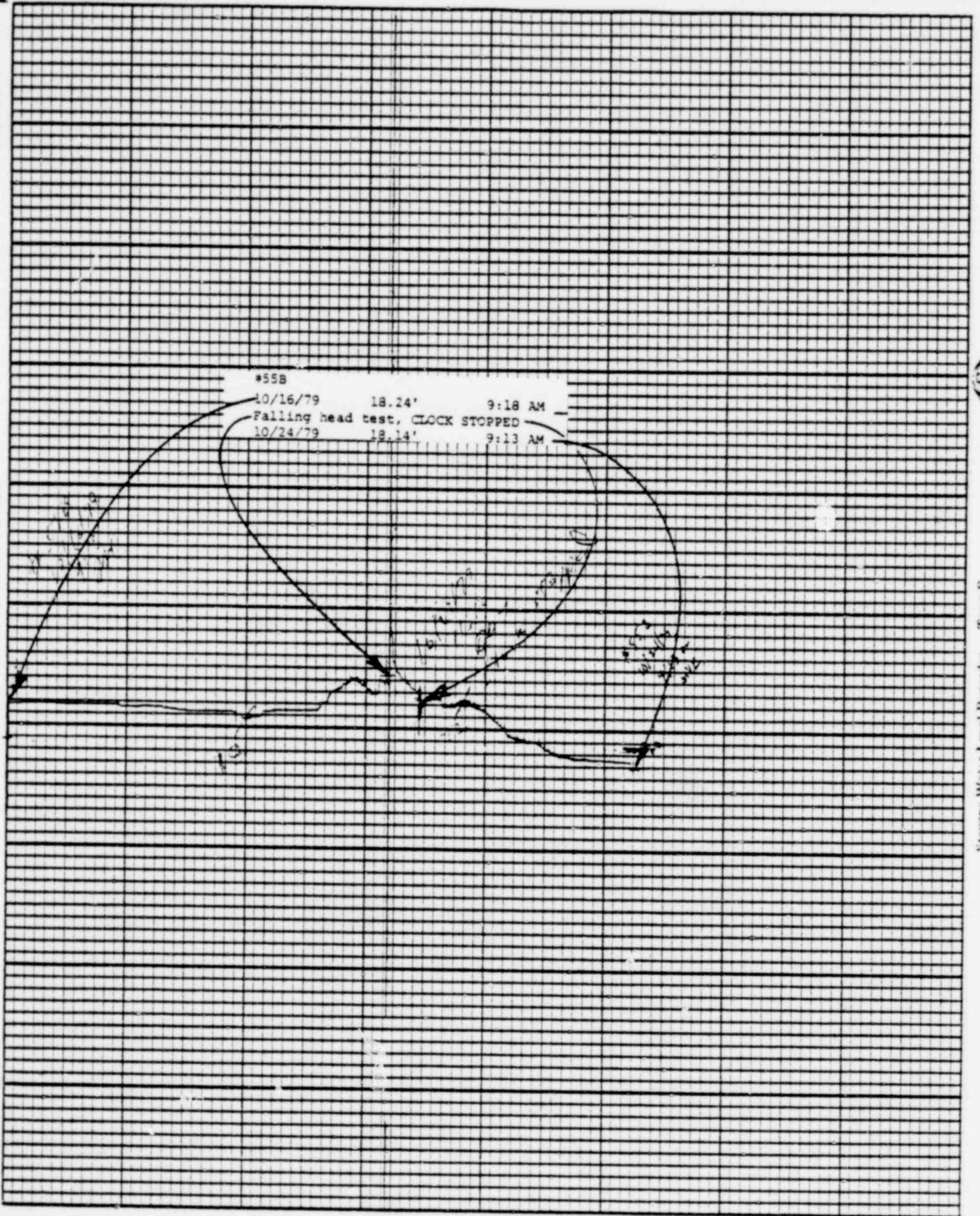


POUR ORIGINAL

Printed in U.S.A.

Chart P-1

2. Leupold & Stevens, Inc., Beaverston, Ore.



Stevens Water Level Recorder — Type F

(S)

1354 322

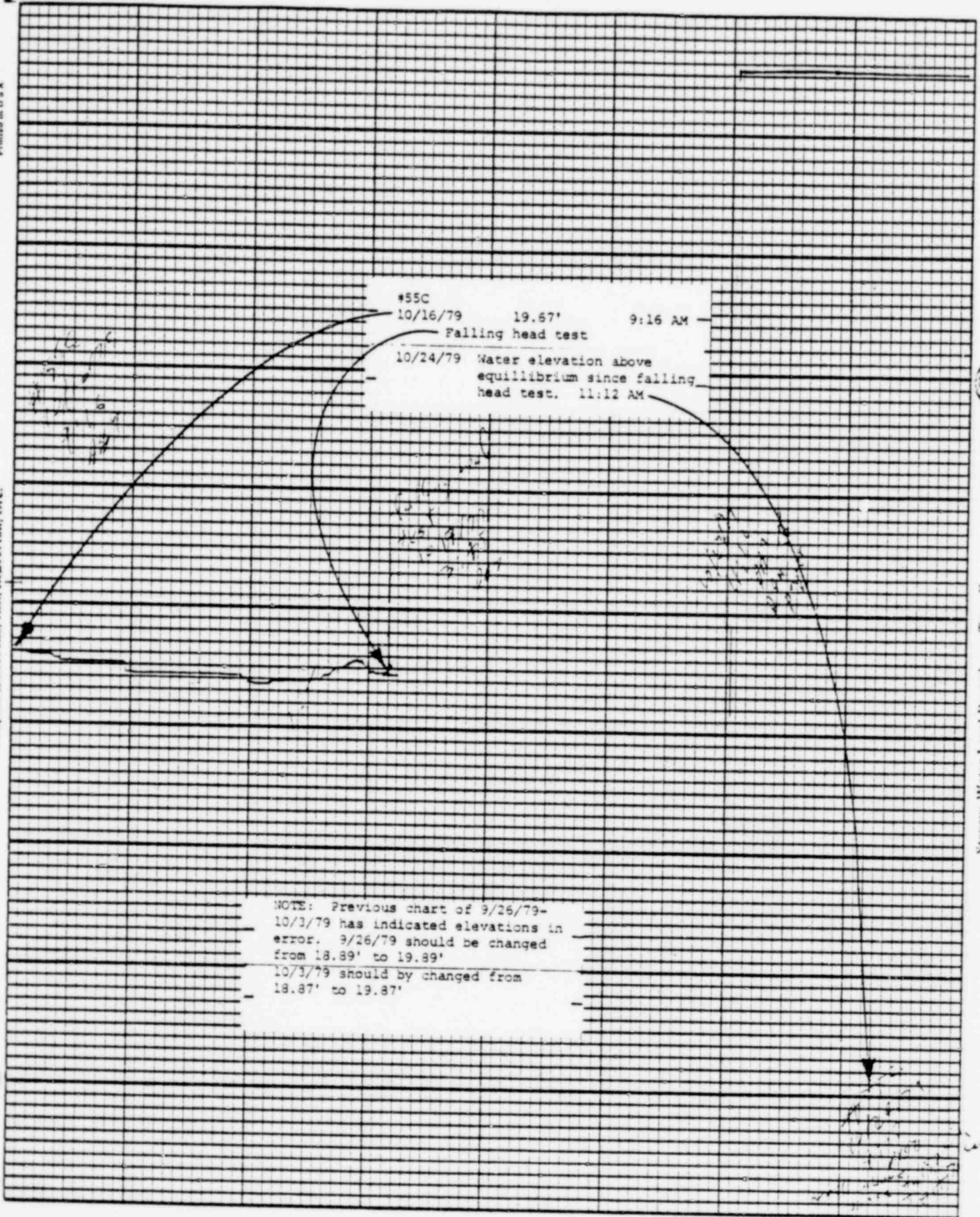
POOR ORIGINAL

Printed in U.S.A.

Leupold & Stevens, Inc., Beaverton, Ore.

Chart F-1

Stevens Water Level Recorder — Type F



1354 323



POOR ORIGINAL

Printed in U.S.A.

Leupold & Stevens, Inc., Beaverton, Ore.

Chart F-1

46



Stevens Water Level Recorder — Type F

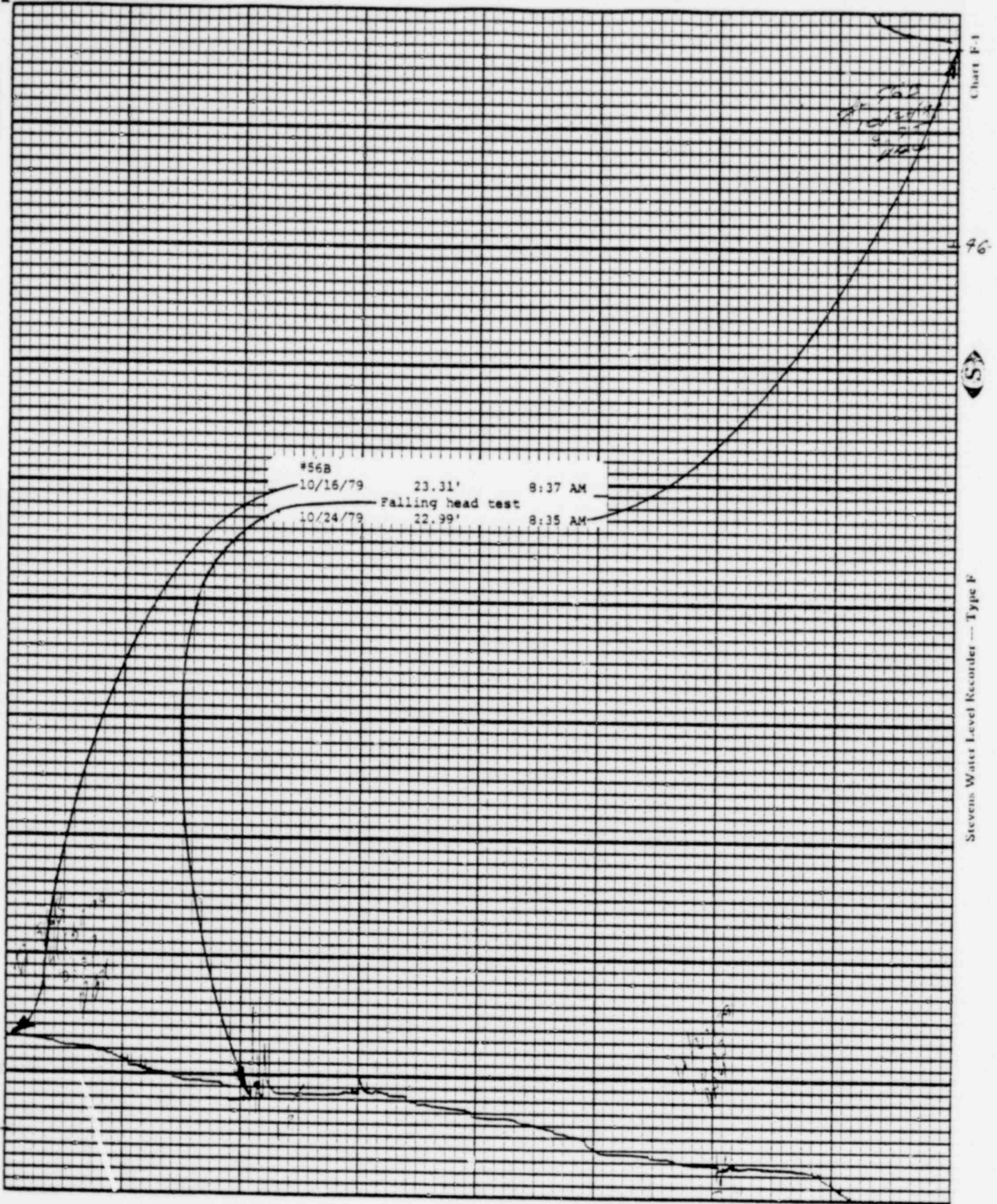
#56A	23.36'	8:30 AM
10/16/79		
Falling head test		
10/24/79	23.09'	8:32 AM

1354 324

POOR ORIGINAL

Printed in U.S.A.

Leupold & Stevens, Inc., Beaverlton, Ore.



Stevens Water Level Recorder - Type F



POOR ORIGINAL

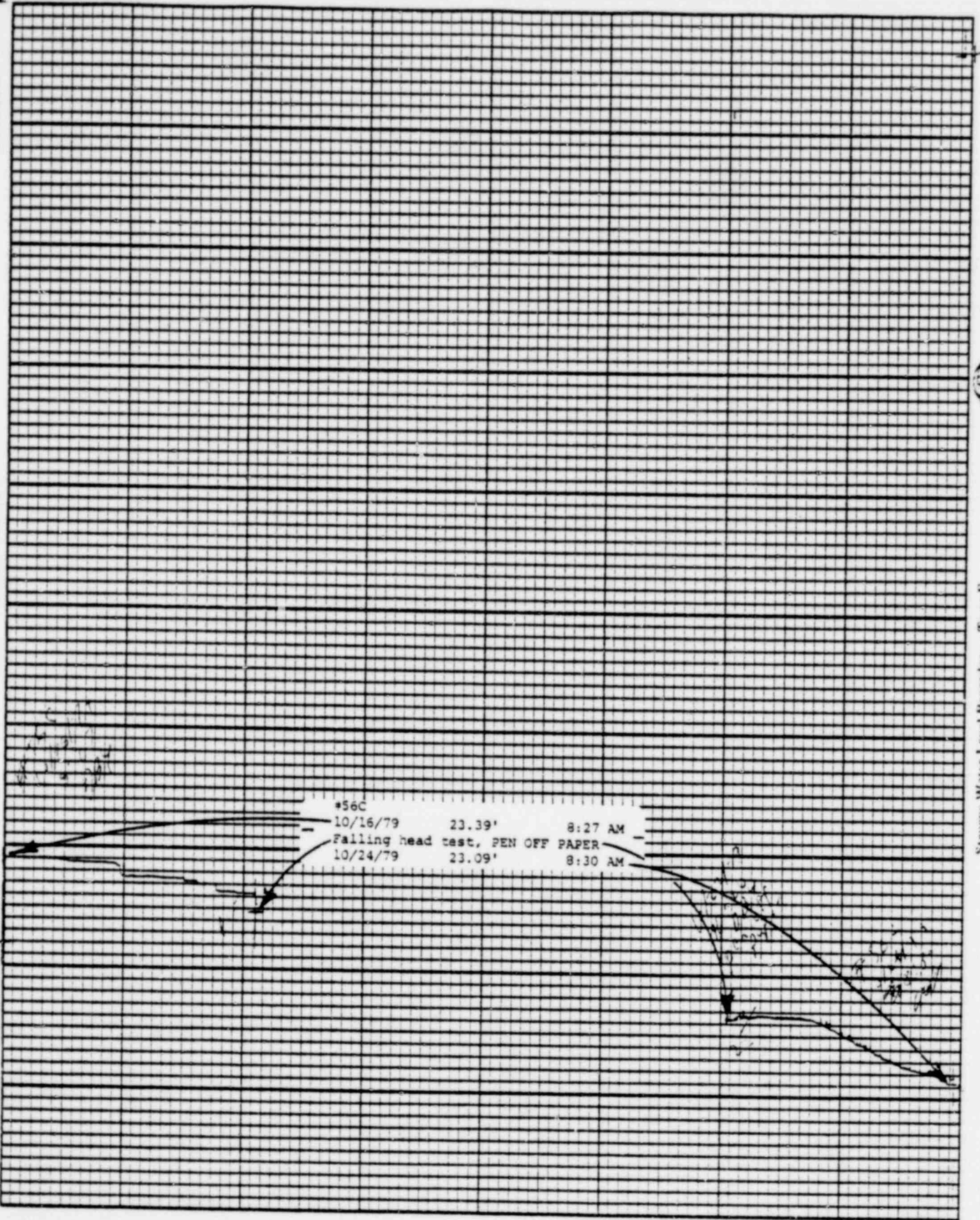
Printed in U.S.A.

Leupold & Stevens, Inc., Heaverion, Ore.

Chart (P-1)

(S)

Stevens Water Level Recorder — Type F



1354 326

POOR ORIGINAL

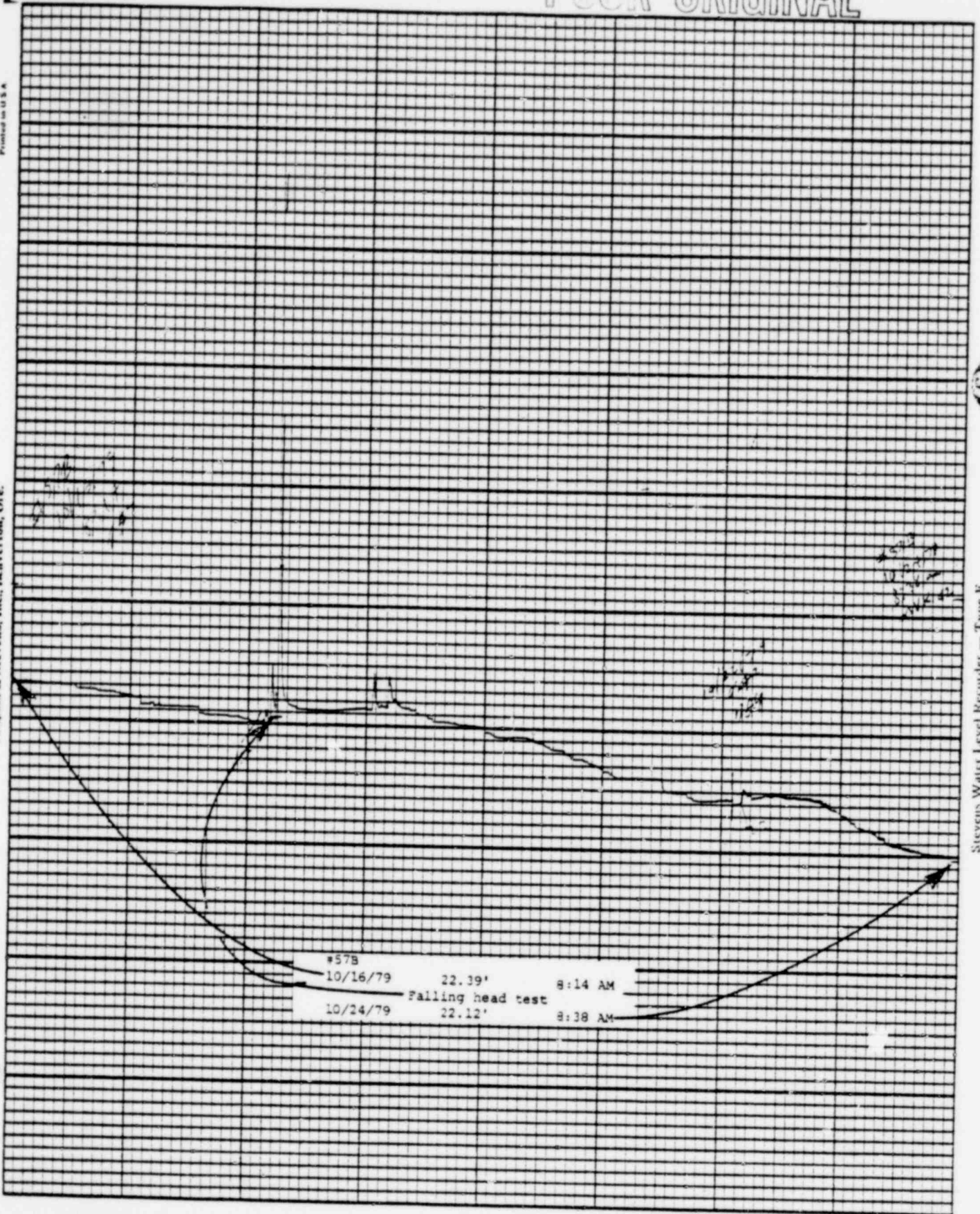
Printed in U.S.A.

Leupold & Stevens, Inc., Beaverton, Ore.

Chart F-1

(S)

Stevens Water Level Recorder — Type F



1354 327

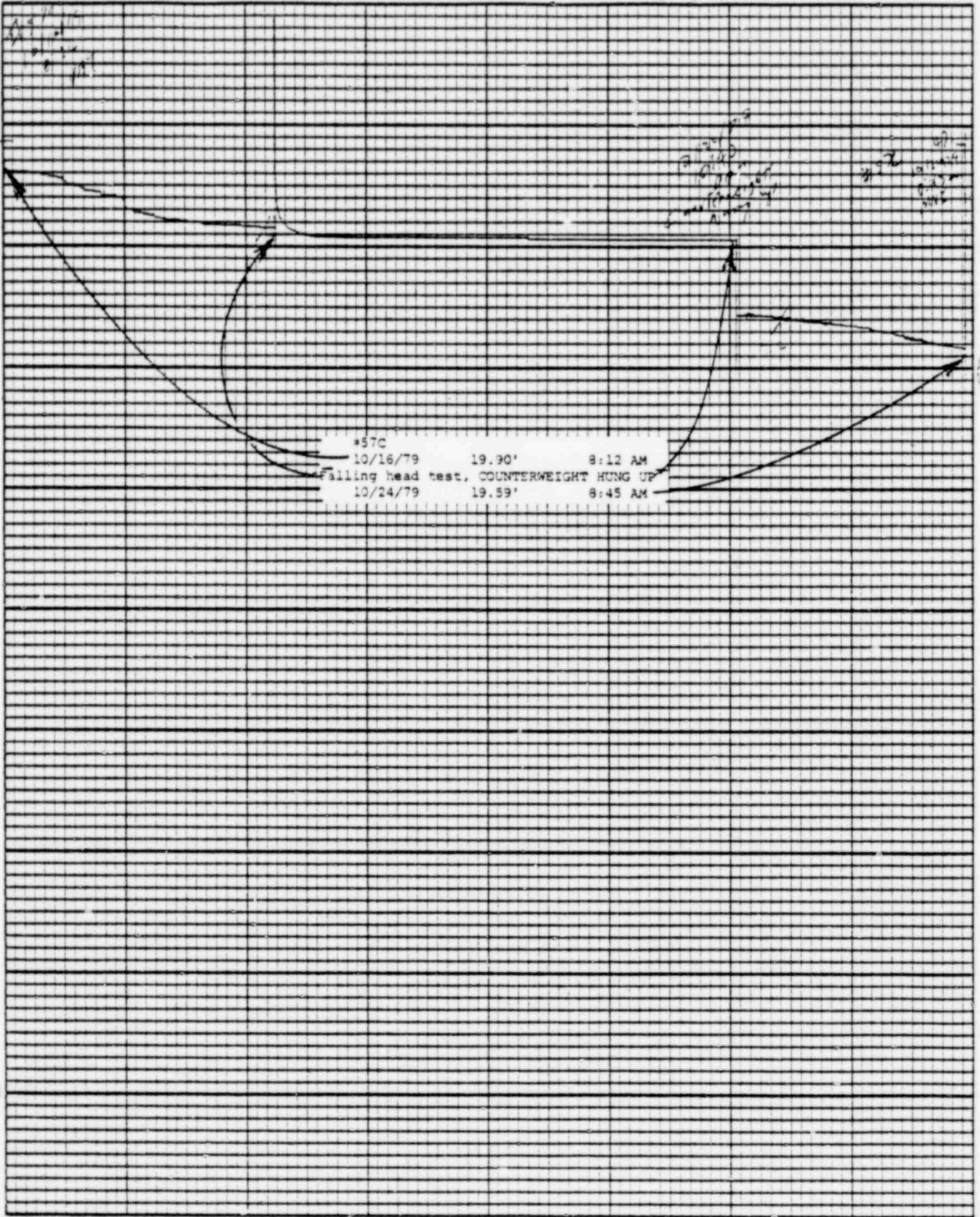


POOR ORIGINAL

Chart F-1

Leupold & Stevens, Inc.

Leupold & Stevens, Inc., Beaverton, Ore.



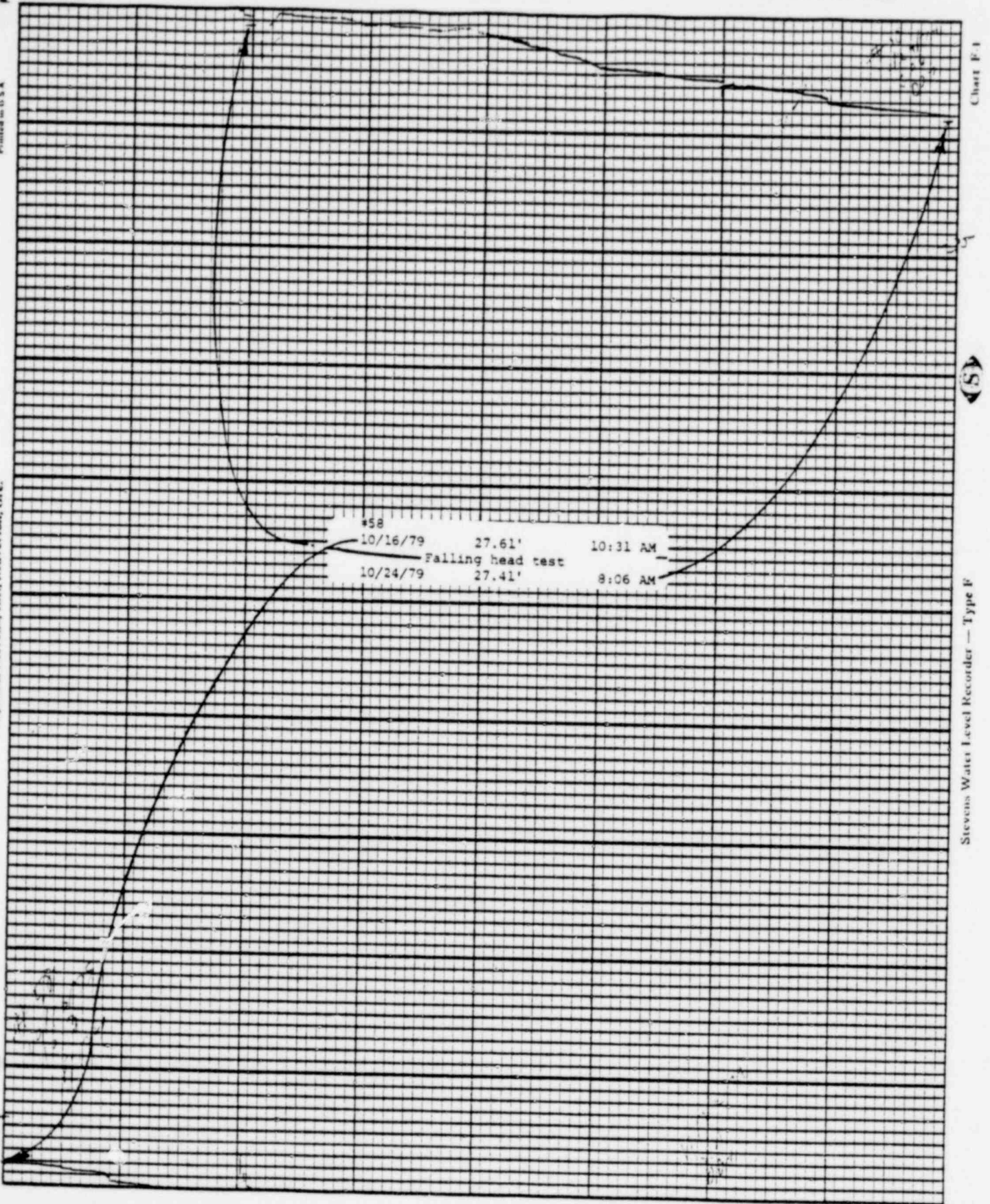
Stevens Water Level Recorder — Type F

1354 328

POOR ORIGINAL

Printed in U.S.A.

Inupold & Stevens, Inc., Beaverlton, Ore.



Stevens Water Level Recorder — Type F

1354 329



POOR ORIGINAL

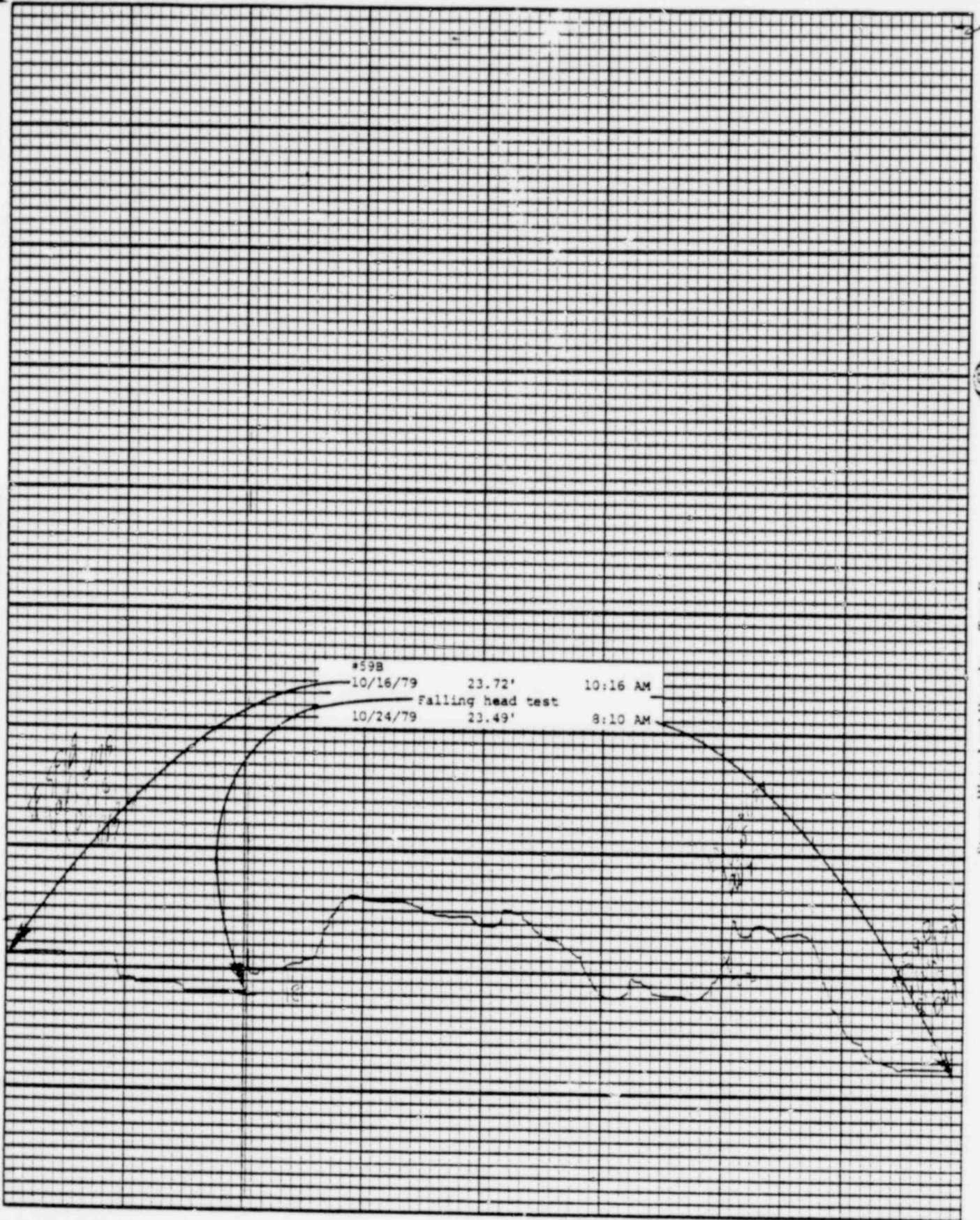
Printed in U.S.A.

Leopold & Stevens, Inc., Beaverton, Ore.

Chart P-1

(S)

Stevens Water Level Recorder — Type F



1354 330

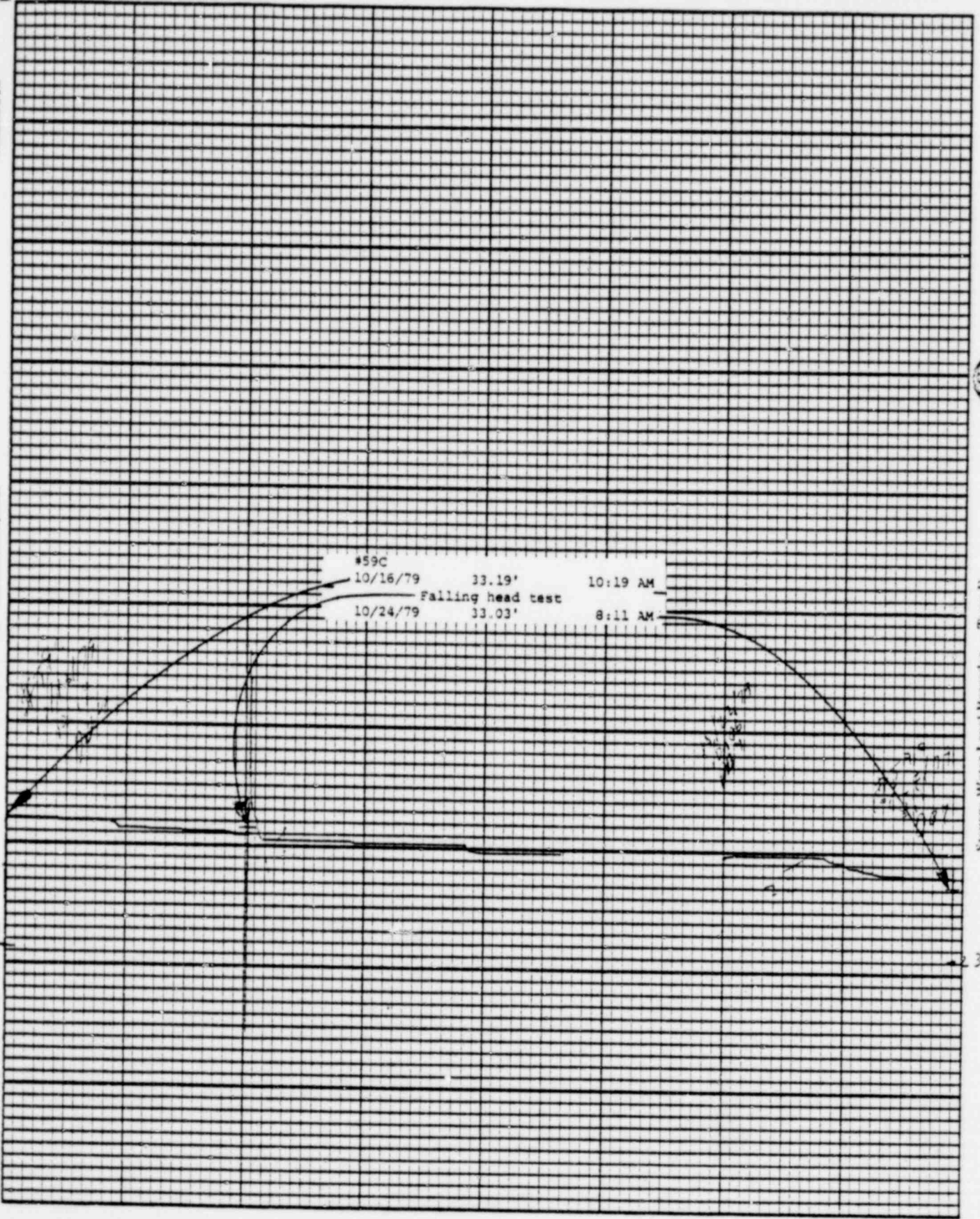
POOR ORIGINAL

Printed in U.S.A.

Chart P-1

Leupold & Stevens, Inc., Beaverlton, Ore.

Stevens Water Level Recorder — Type F



1354 331



BAILLY WELLS WITHOUT RECORDERS

10/24/79

<u>WELL #</u>	<u>WATER ELEVATION IN FEET</u>
62	31.81
65	26.81
67	21.58
72	10.68
73	11.25
74	14.39

DBY:bd

1354 332

POND LEVELS

<u>POND</u>	<u>10/24/79</u>
1	26.90'
2	30.29'
3	27.87'
4	23.16'
5	22.58'
6	32.67'
7	DRY
8	DRY
9	28.58'
10	INACCESSIBLE
11	40.67'
12	36.15'
13	37.55'

DBY:bd

1354 333



PNEUMATIC PRESSURE TRANSDUCERS

10/24/79

TRANSDUCER

WATER ELEVATION IN FEET

P-1	10.3
P-2	10.2
P-3	6.7
P-4	13.9
P-5	14.6
P-6	14.1

DBY:bd

1354 334

WATER METER READINGS

<u>DATE</u>	<u>TIME</u>	<u>METER READING (GALLONS)</u>	<u>INSTANTANEOUS FLOW RATE (GPM)</u>
-------------	-------------	--	--

Sump Pump Discharge

10/24/79	4:15 PM	310,558,000	213
----------	---------	-------------	-----

Well Point Discharge

10/24/79	4:15 PM	9,025,589	NOT IN USE
----------	---------	-----------	------------

DBY:bd

1354 335