



## Northern Indiana Public Service Company

Nuclear Staff  
RR # 3, Box 501  
Chesterton, IN 46304  
October 5, 1979

BAILLY GENERATING STATION N-1

Mr. Ronald Ballard  
Environmental Projects Branch No. 1  
Directorate of Licensing  
U.S. Nuclear Regulatory Commission  
Washington, D.C. 20545

RE: NORTHERN INDIANA PUBLIC SERVICE COMPANY  
BAILLY GENERATING STATION NUCLEAR 1  
DOCKET 50-367

Dear Mr. Ballard:

Enclosed herewith are ten (10) copies of the following:

1. Well Charts for 9/19/79 - 9/26/79
2. Bailly Wells Without Recorders for 9/26/79
3. Pond Levels for 9/26/79
4. Pneumatic Pressure Transducers for 9/26/79
5. Water Meter Readings for 9/26/79

Sincerely,

R. J. Bohn  
Manager, Nuclear Staff

*DBY*  
DBY:lu

Enclosures

File: Ground Water Observation Monitoring Wells

*Doody  
ES  
11*

1143 158

7910120 141

*A*

Leupold &amp; Stevens, Inc., Beaverton, Ore.

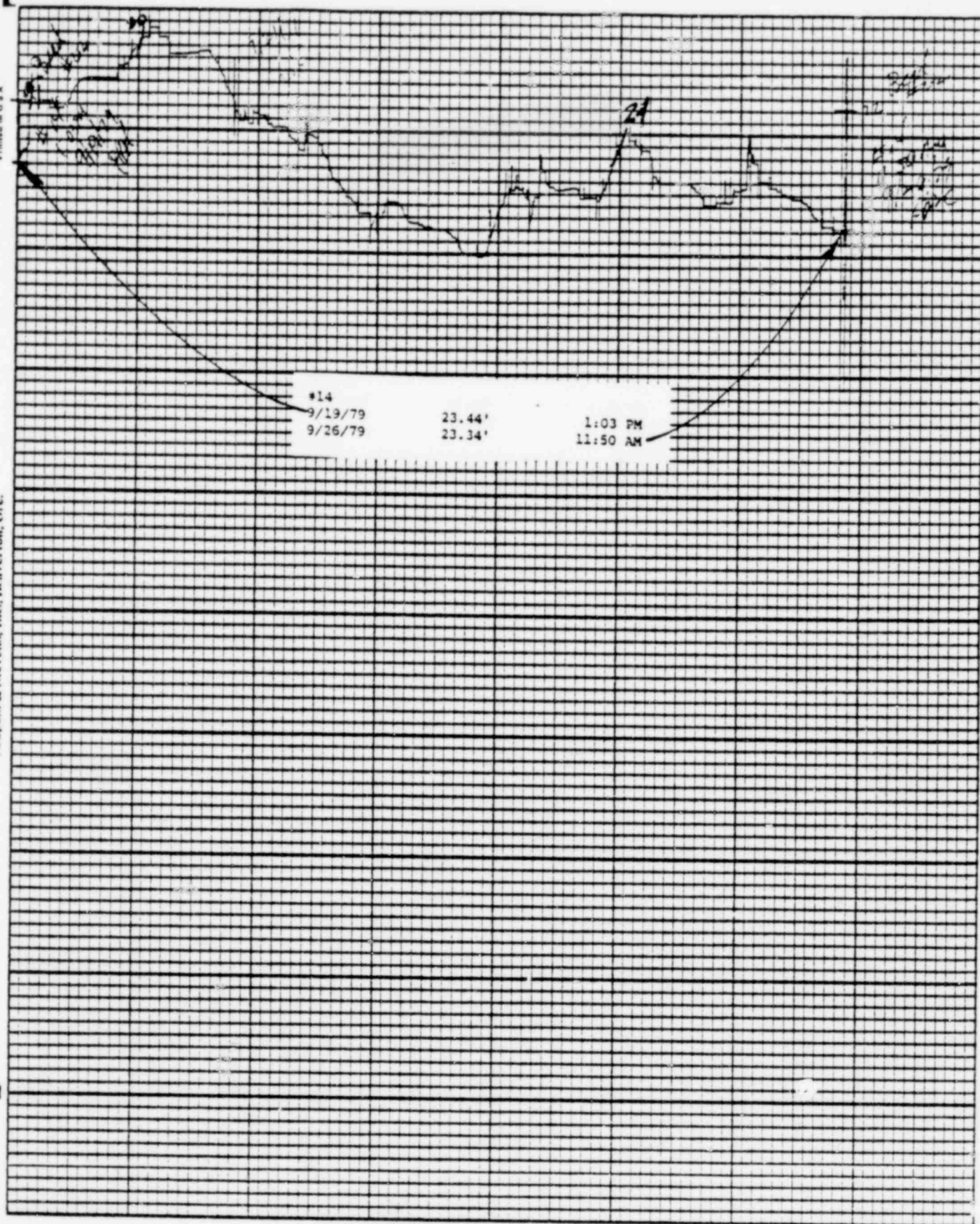


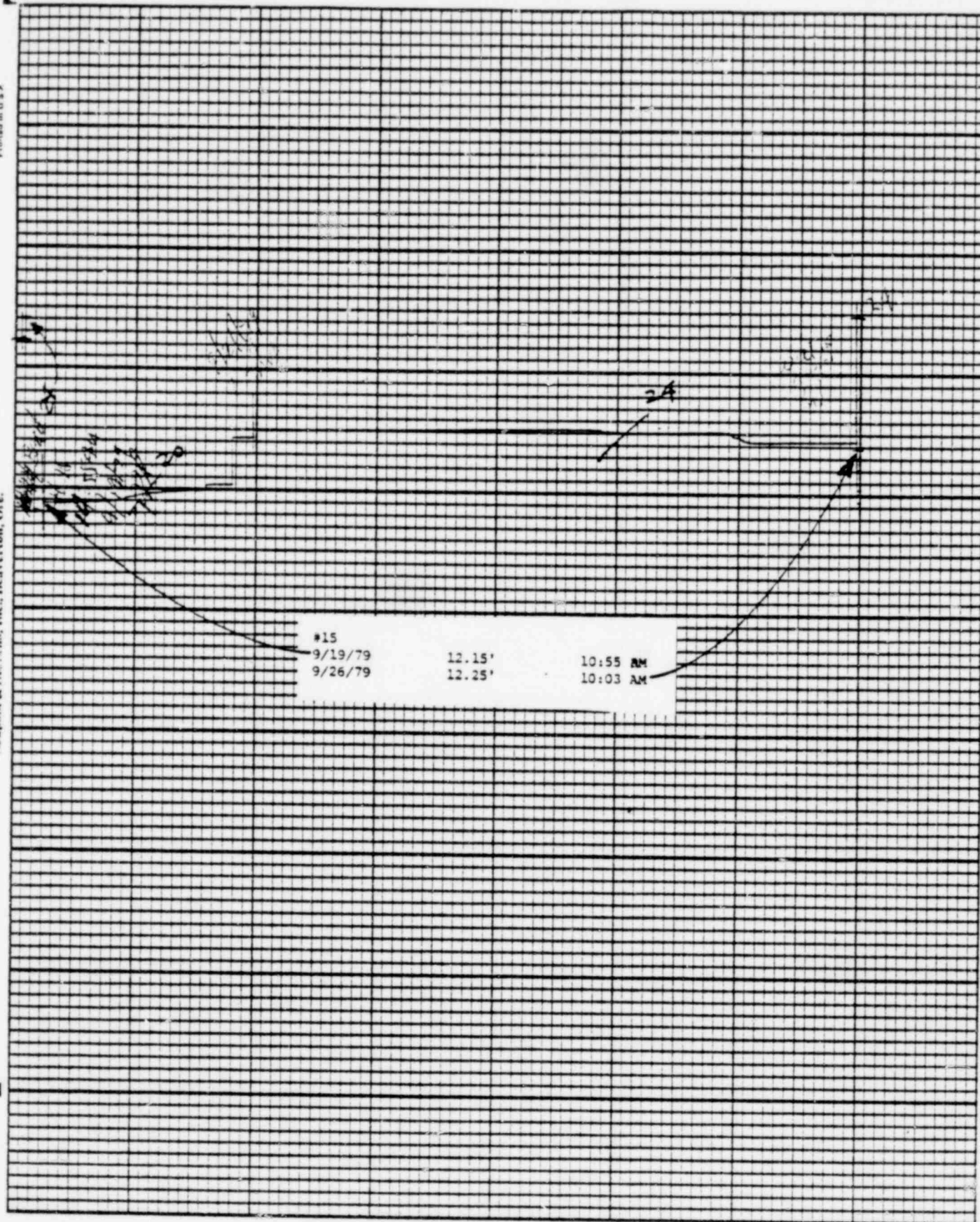
Chart F-4



Stevens Water Level Recorder — Type H

POOR ORIGINAL

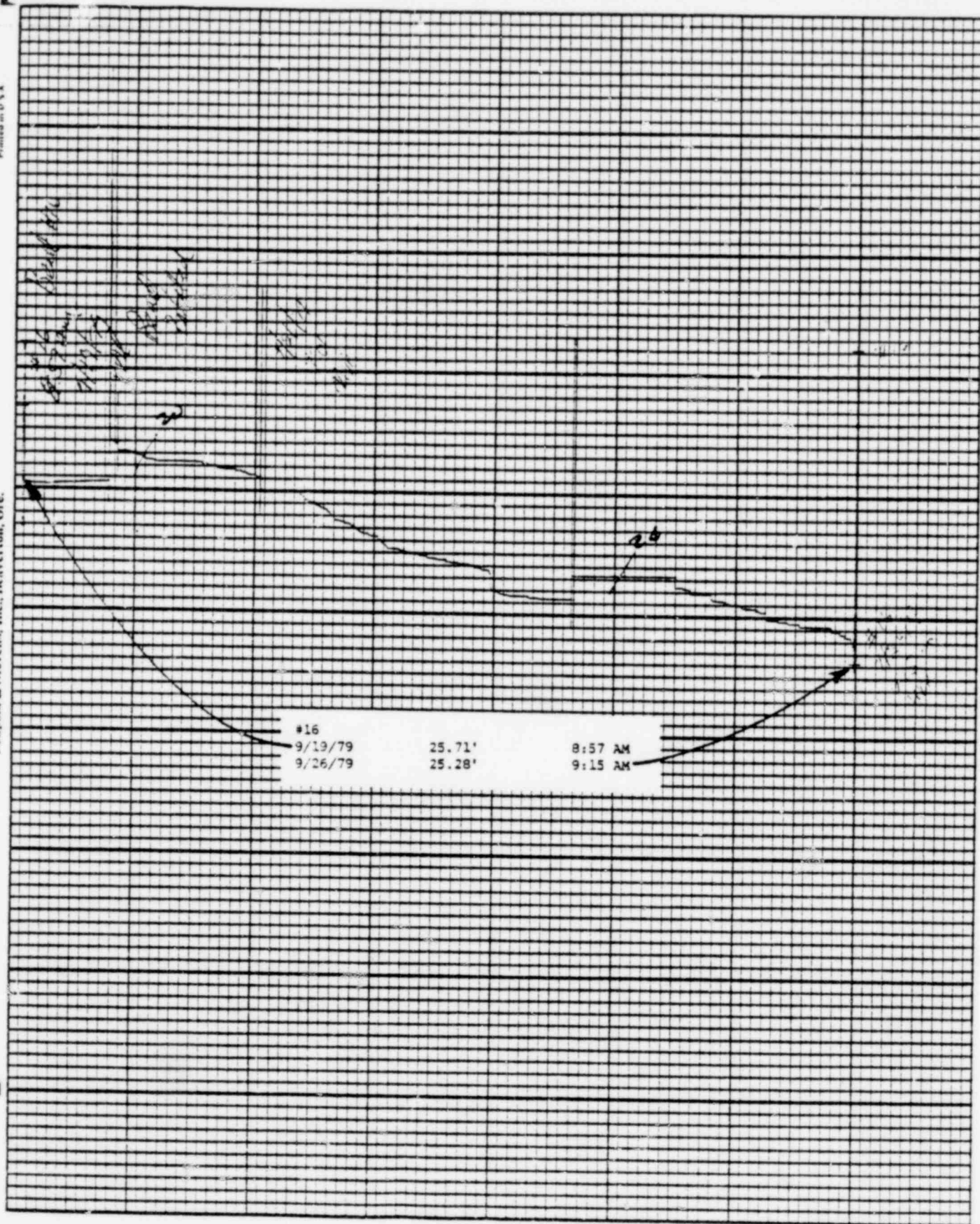
1143 159



POOR ORIGINAL

1143 160





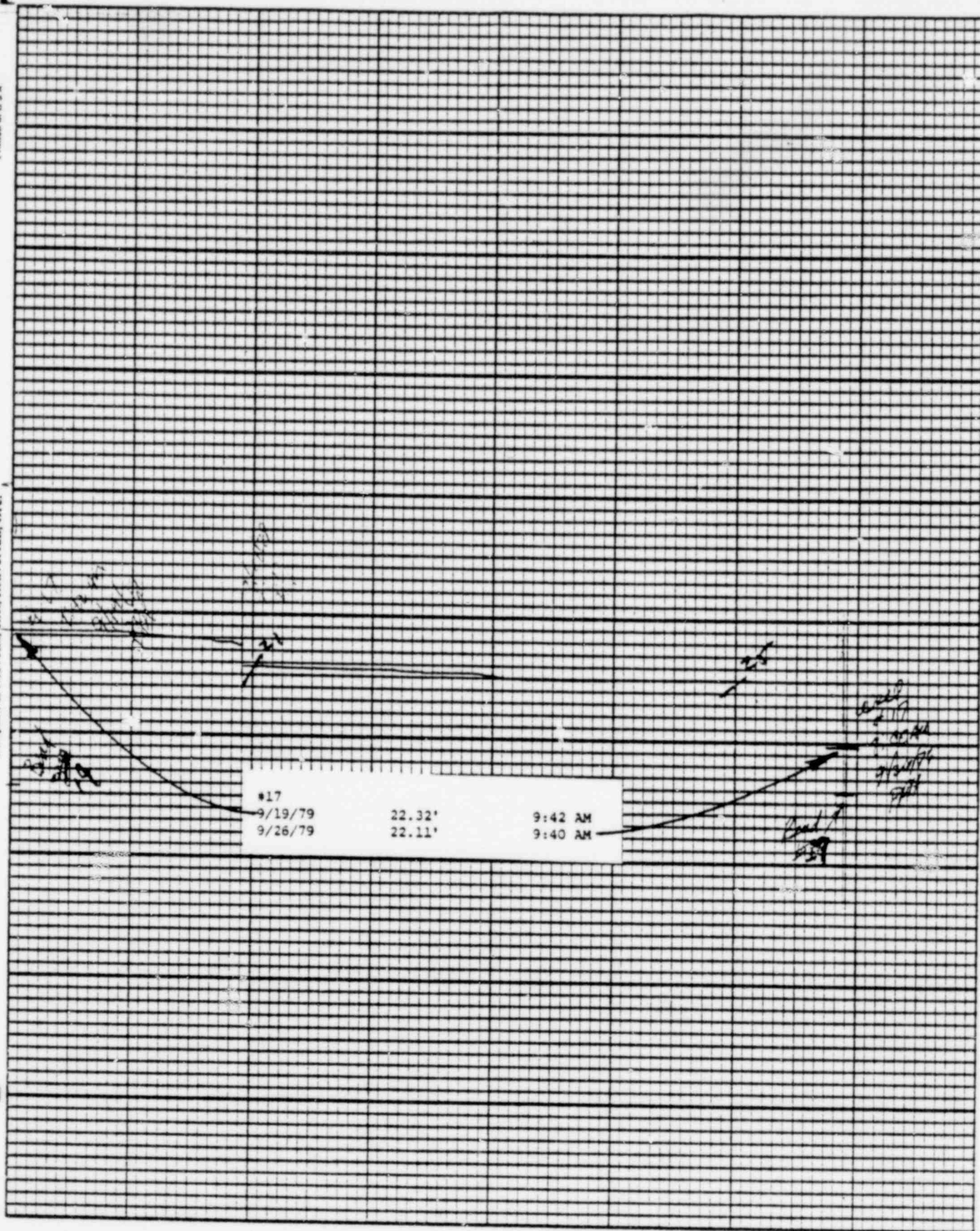
POOR ORIGINAL

1143 161



Leupold & Stevens, Inc., Beaverlton, Ore.

Stevens Water Level Recorder — Type F

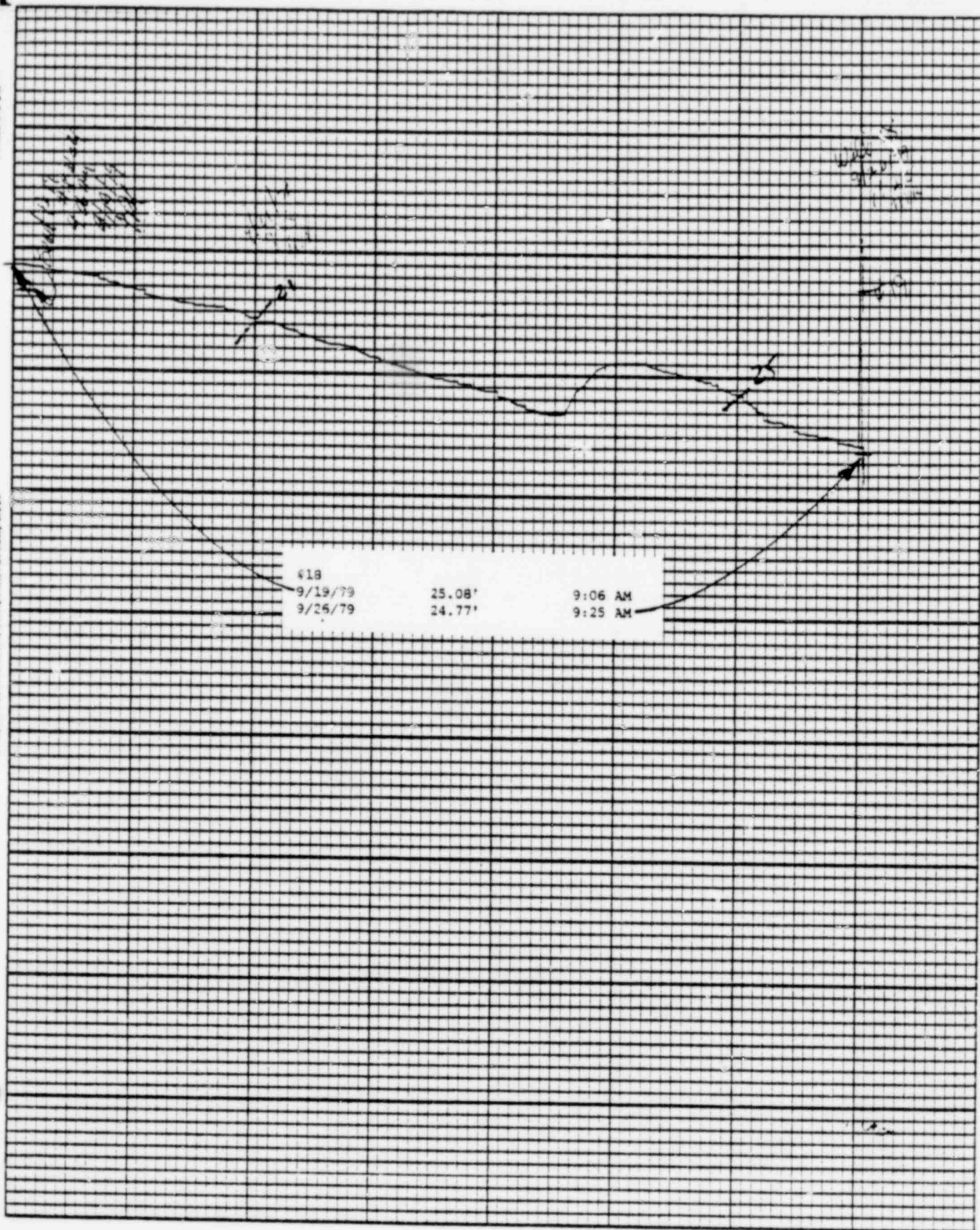


POOR ORIGINAL

1143 162

Leupold &amp; Stevens, Inc., Heaverton, Ore.

Chen P. H.



Stevens Water Level Recorder — Type F

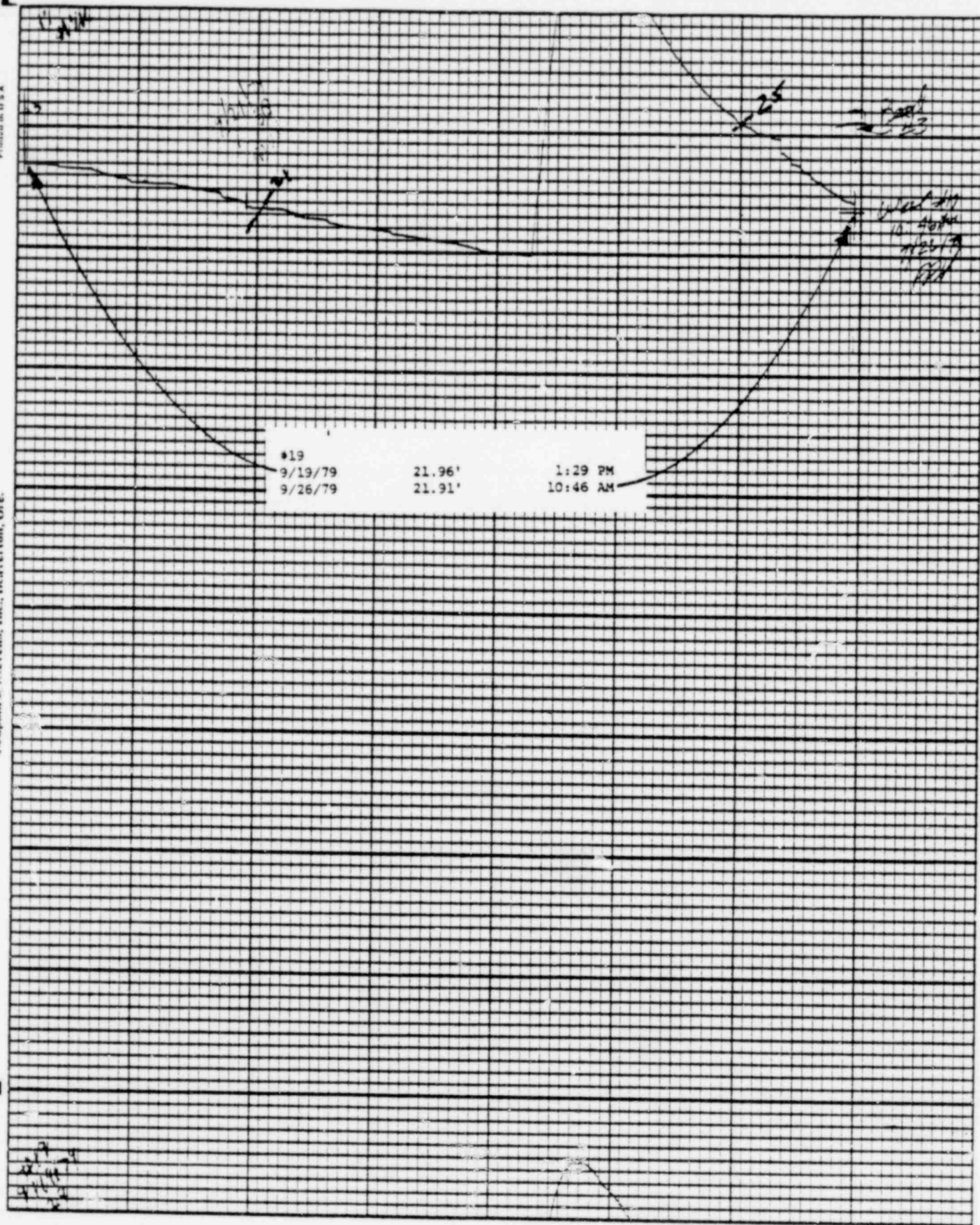
POOR ORIGINAL

1143 163



Leupold & Stevens, Inc., Beaverton, Ore.

Printed in U.S.A.



Stevens Water Level Recorder — Type F

(S)

Chart F-1

POOR ORIGINAL

1143 164



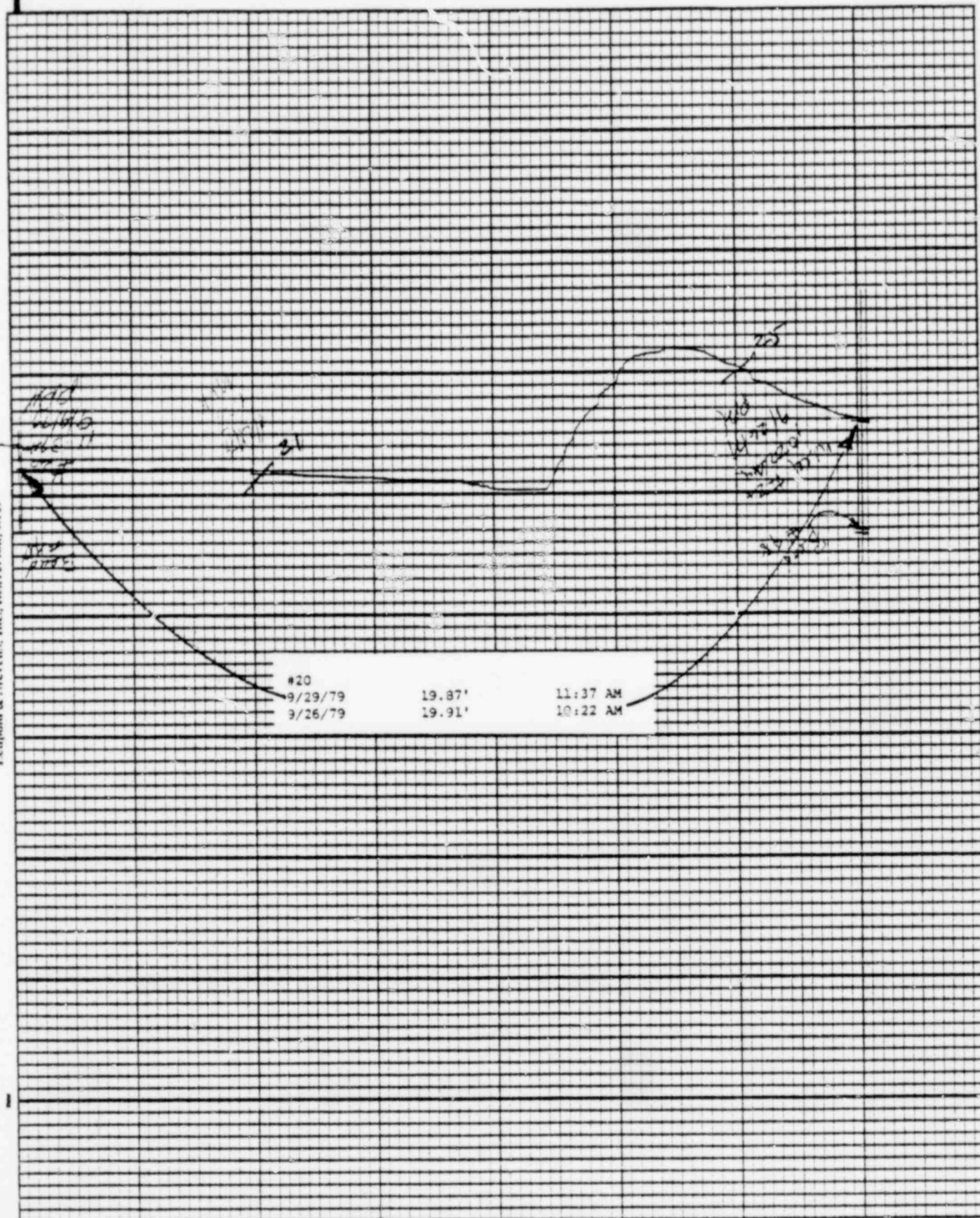
Leupold & Stevens, Inc., Beaverlton, Ore.

Printed on 5

Chart P-4

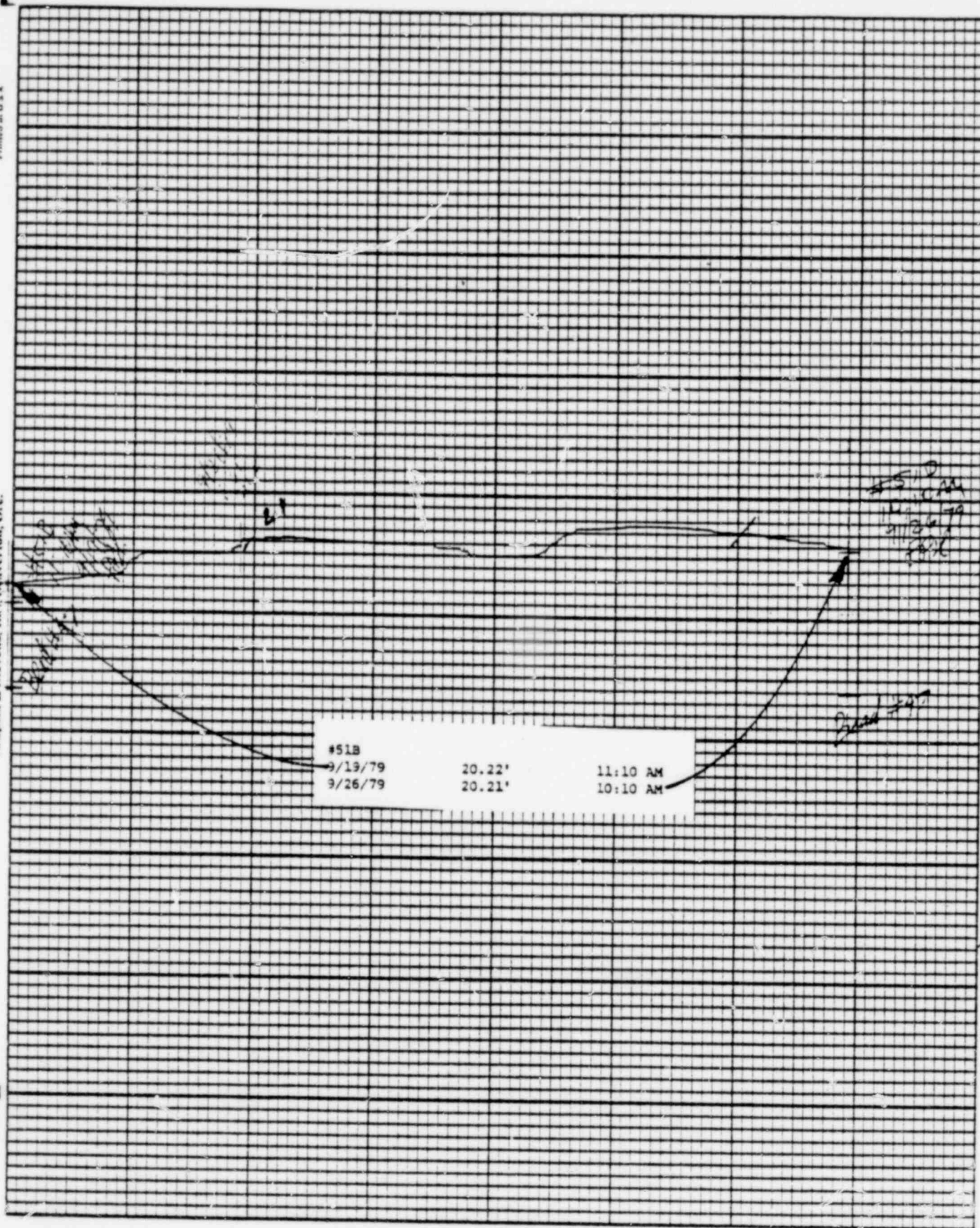
(5)

Stevens Water Level Recorder — Type F



POOR ORIGINAL

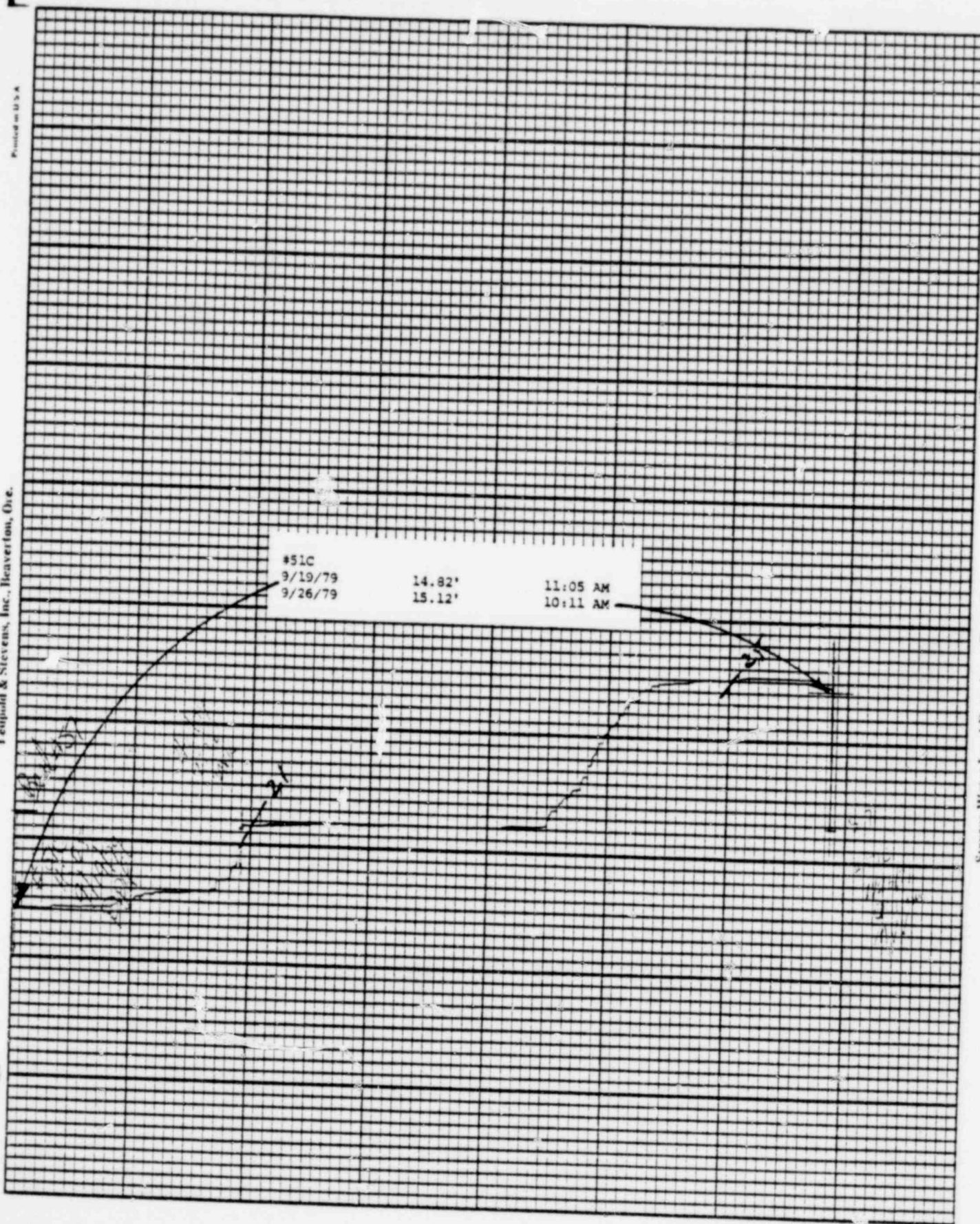
1143 165



POOR ORIGINAL

1143 166

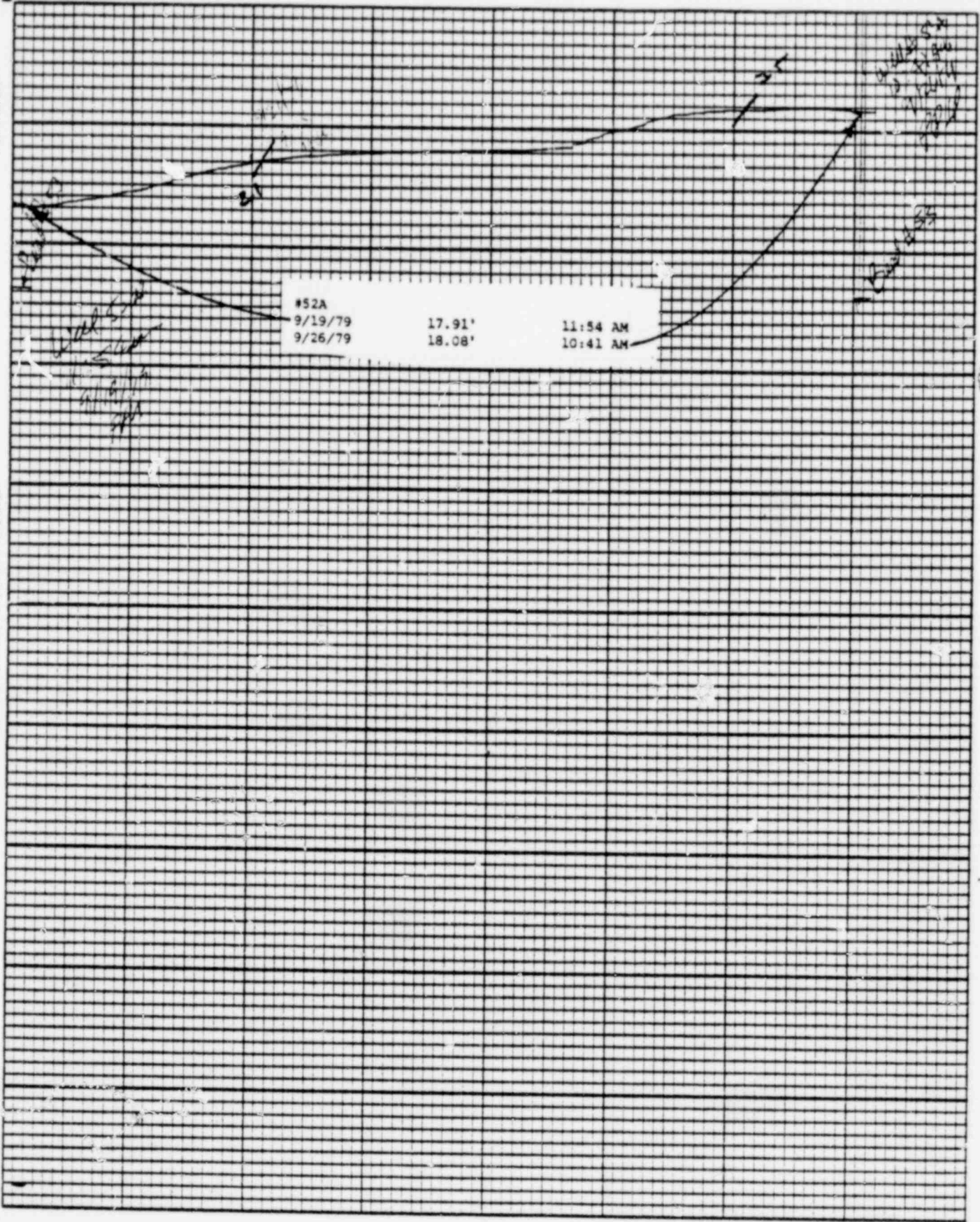




POOR ORIGINAL

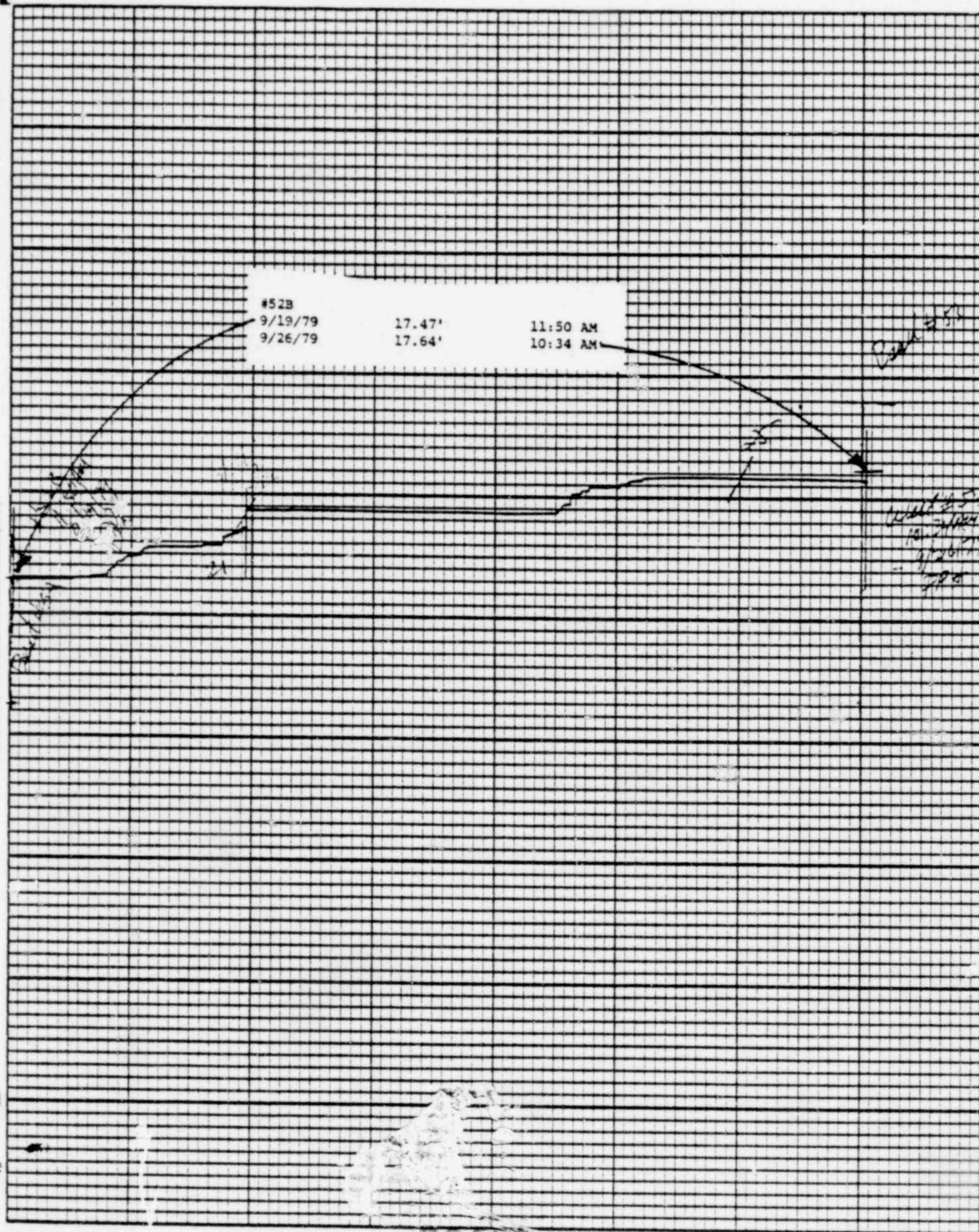
1143 167





POOR ORIGINAL

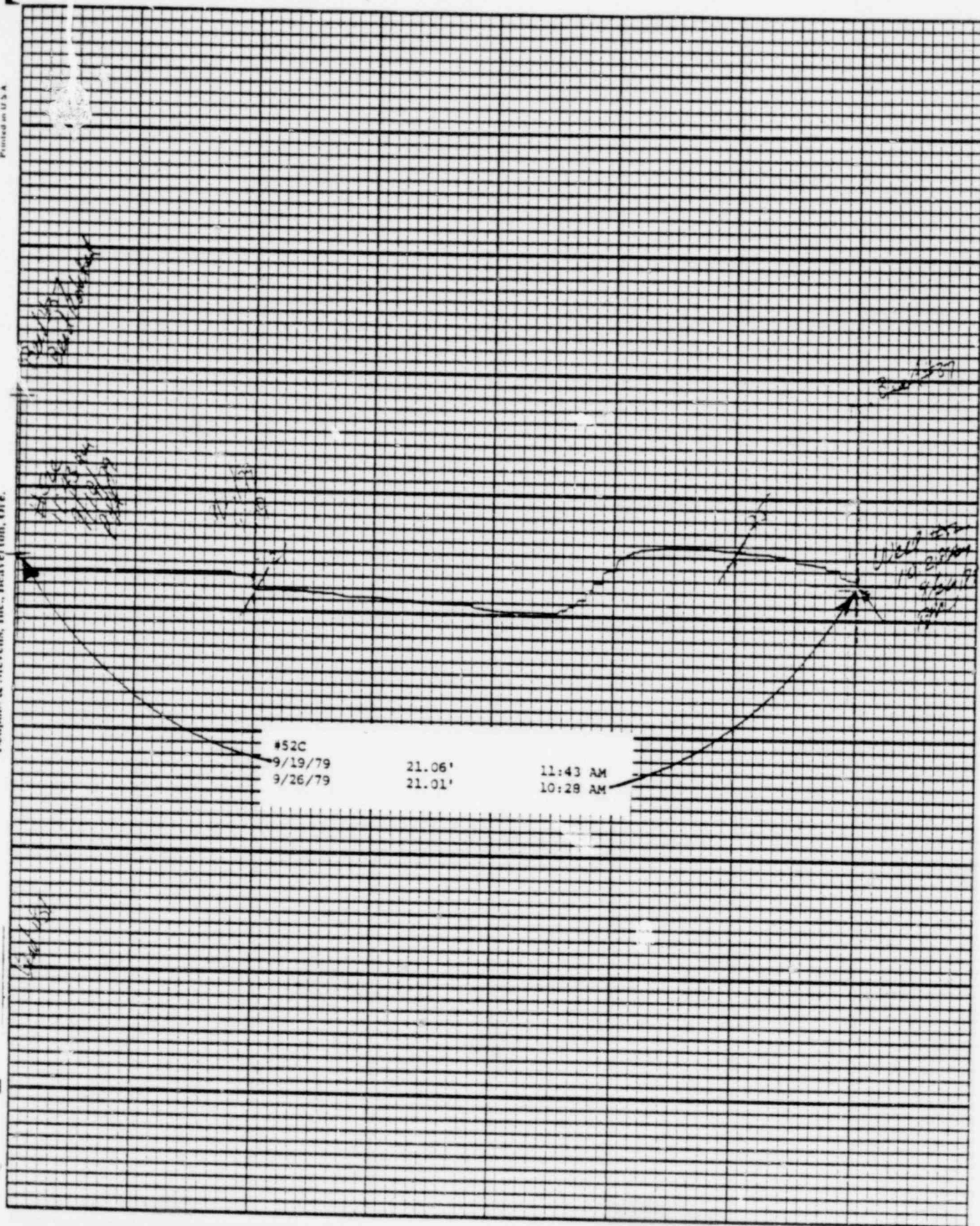
1143 168



POOR ORIGINAL

1143 169

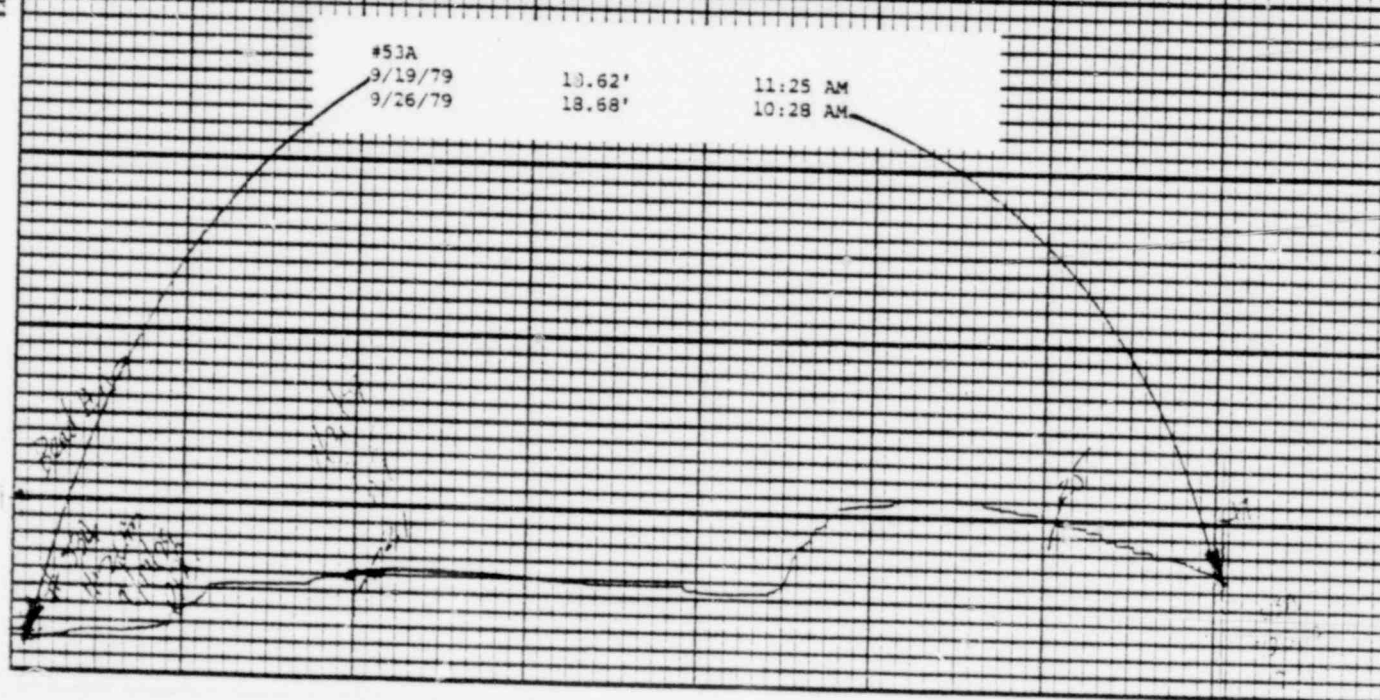




POOR ORIGINAL

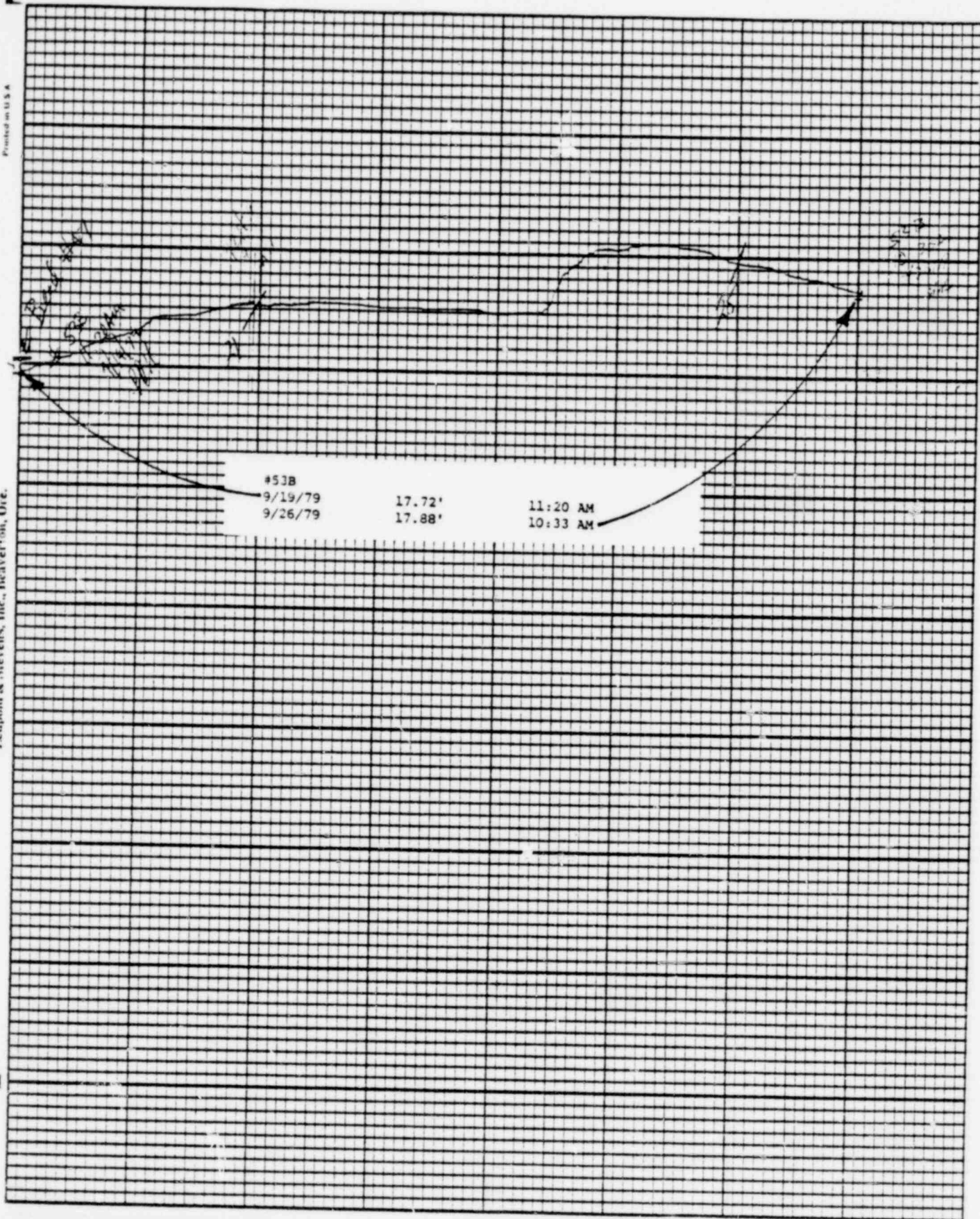
1143 170





POOR ORIGINAL

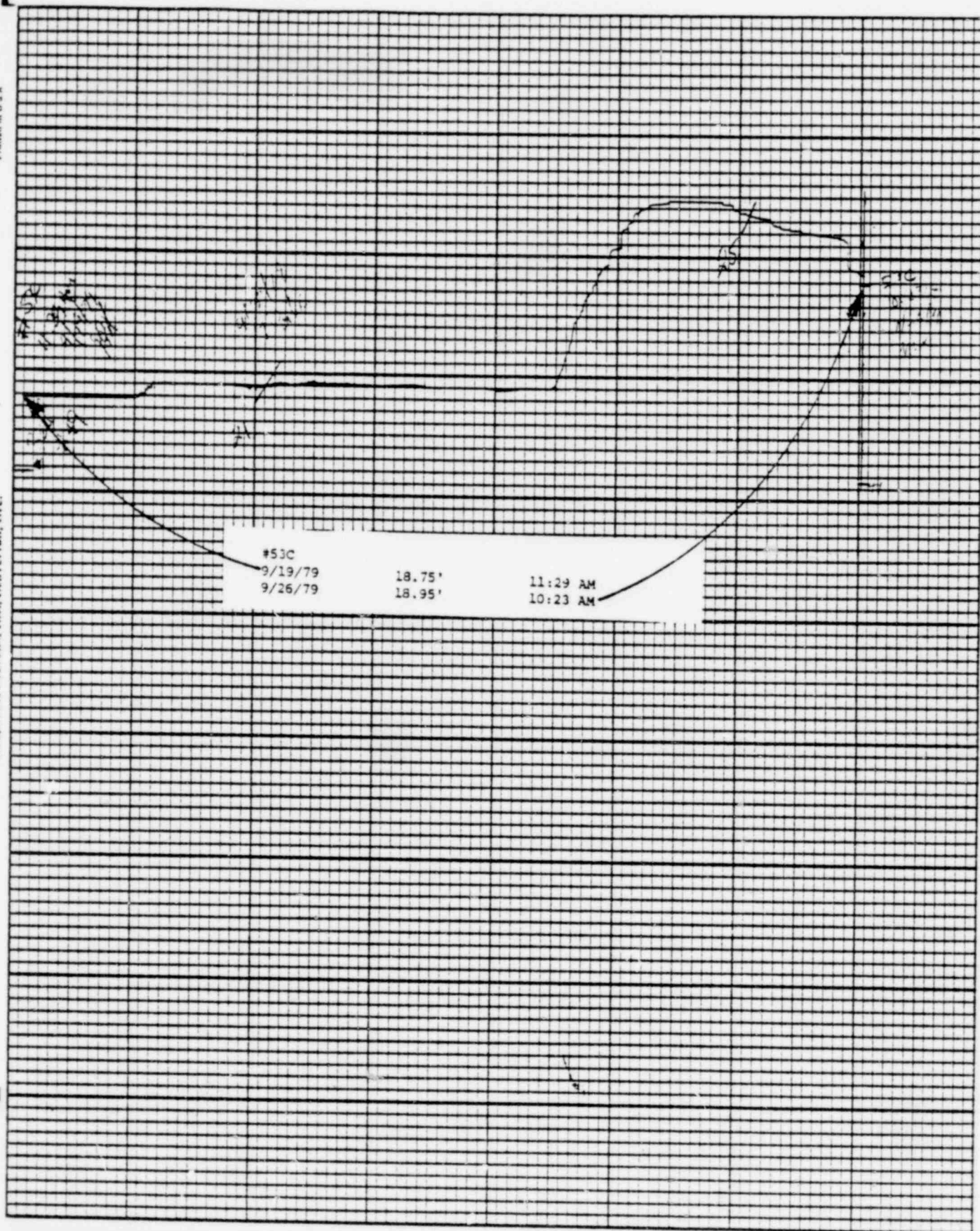
1143 171



POOR ORIGINAL

1143 172

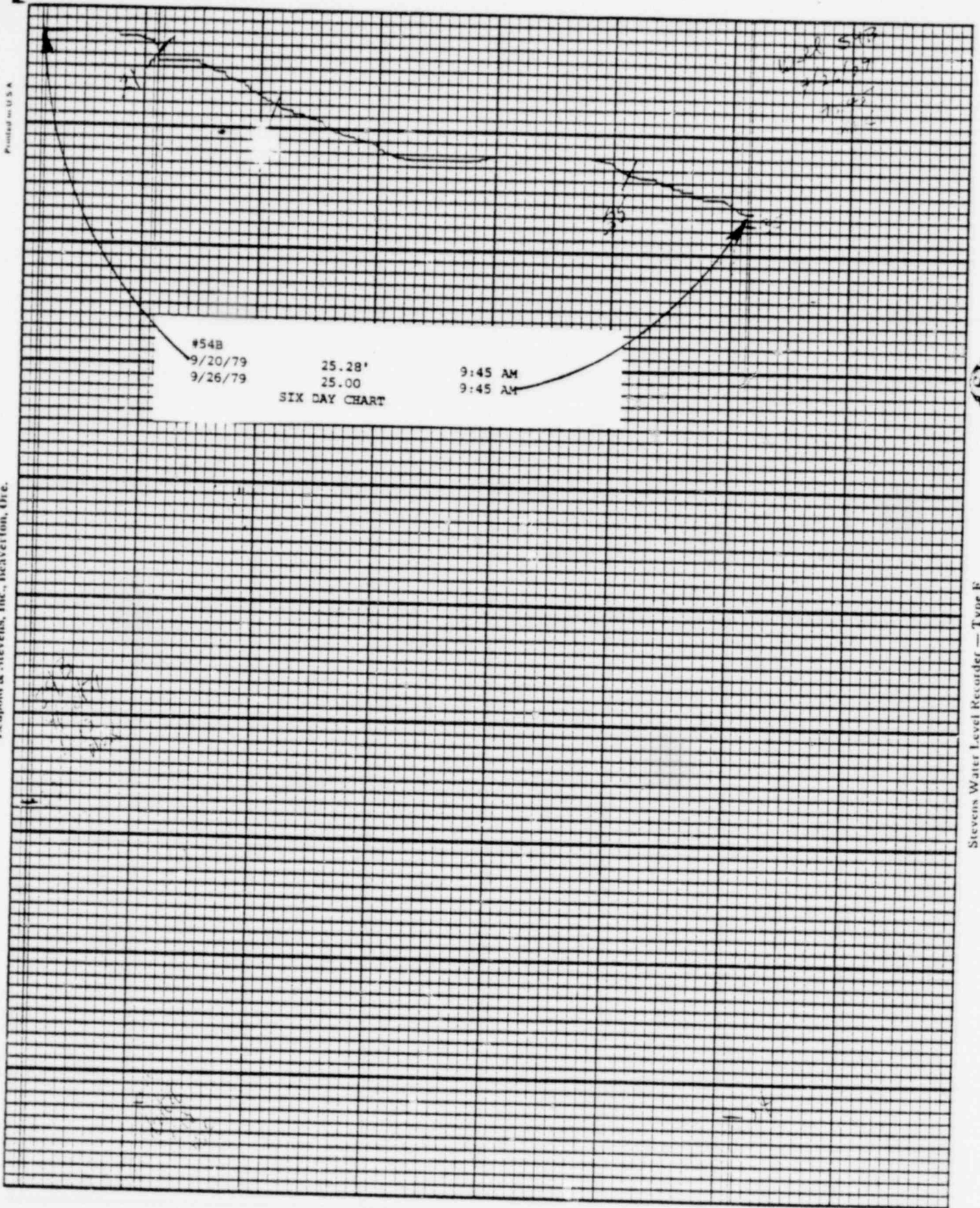




POOR ORIGINAL

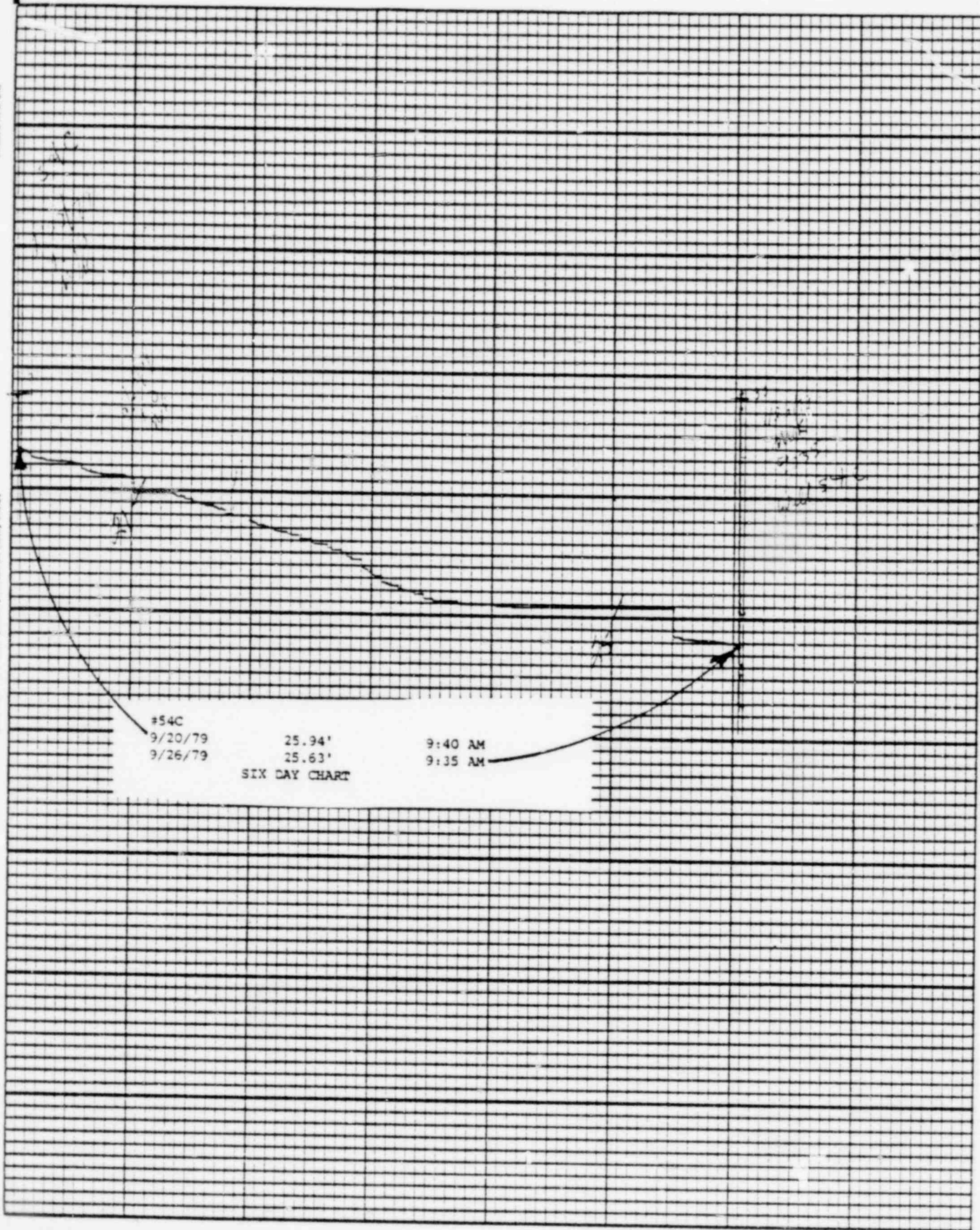
1143 173





POOR ORIGINAL

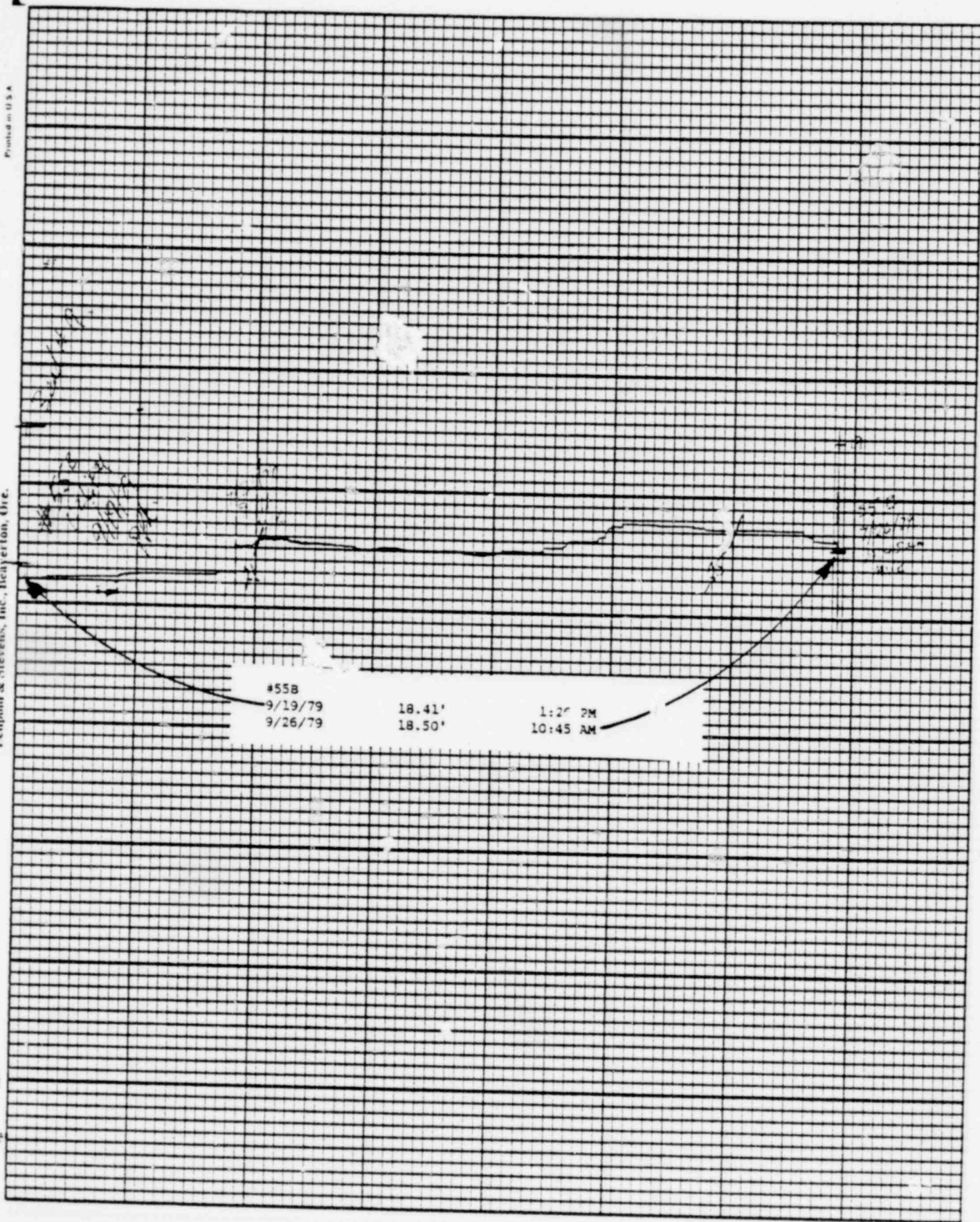
1143 174



POOR ORIGINAL

1145 175

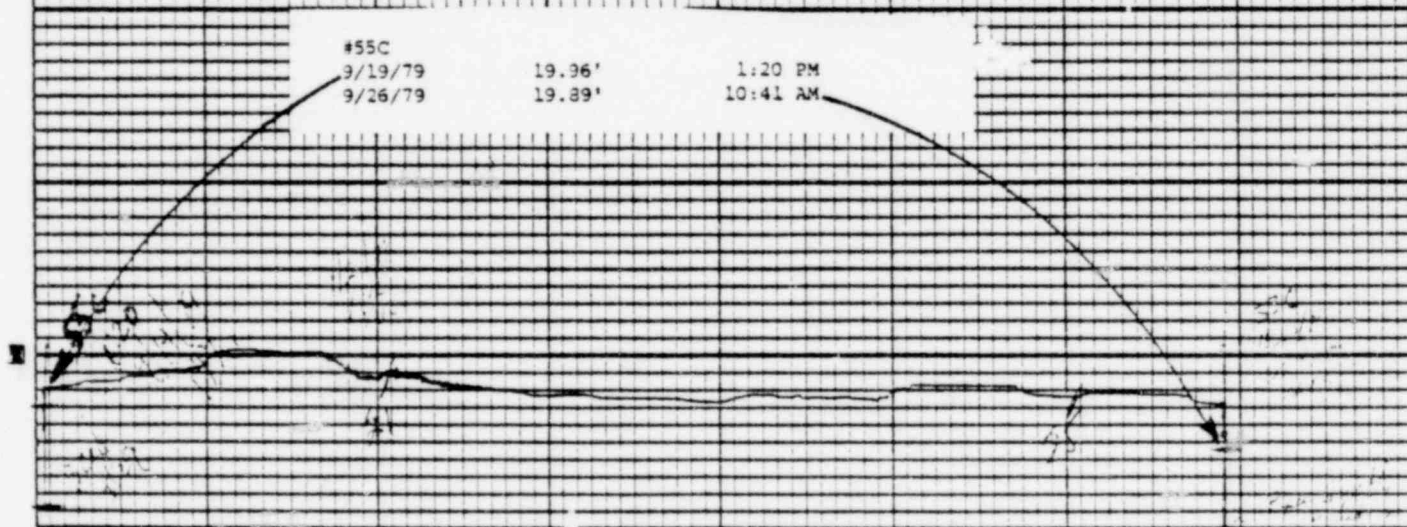




POOR ORIGINAL

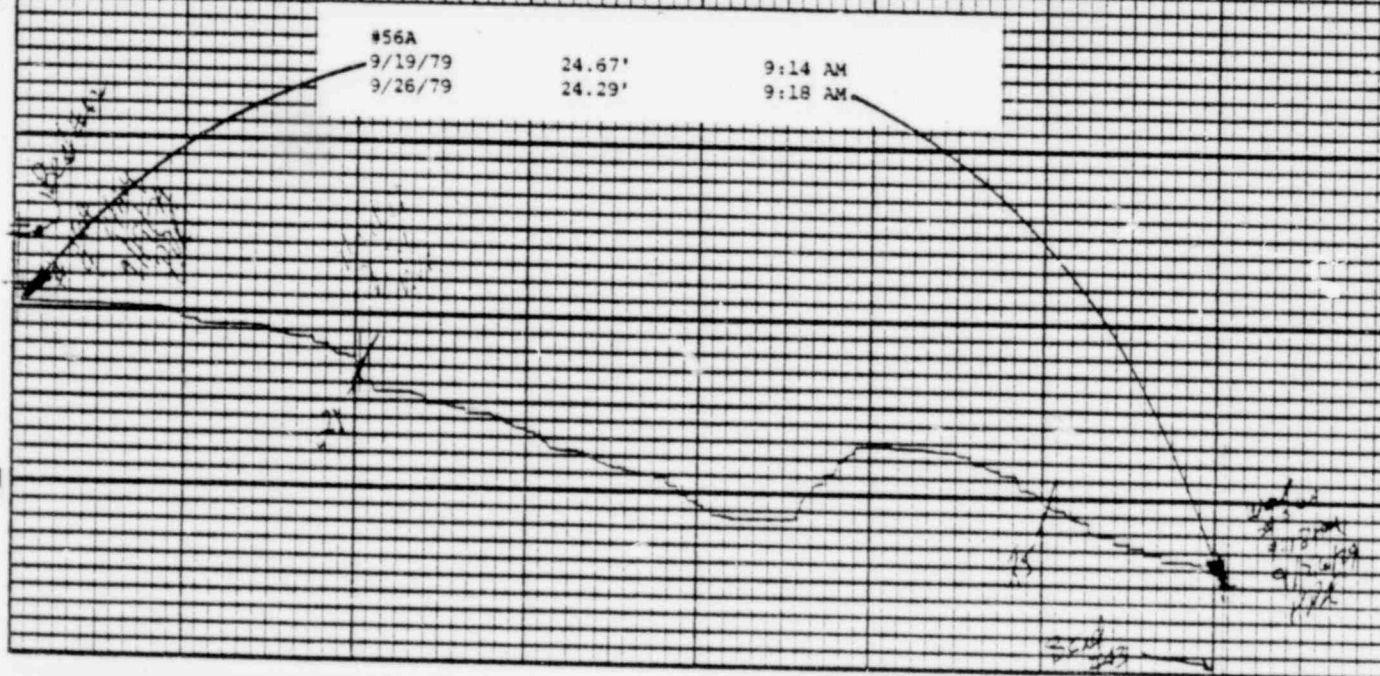
1143 176





POOR ORIGINAL

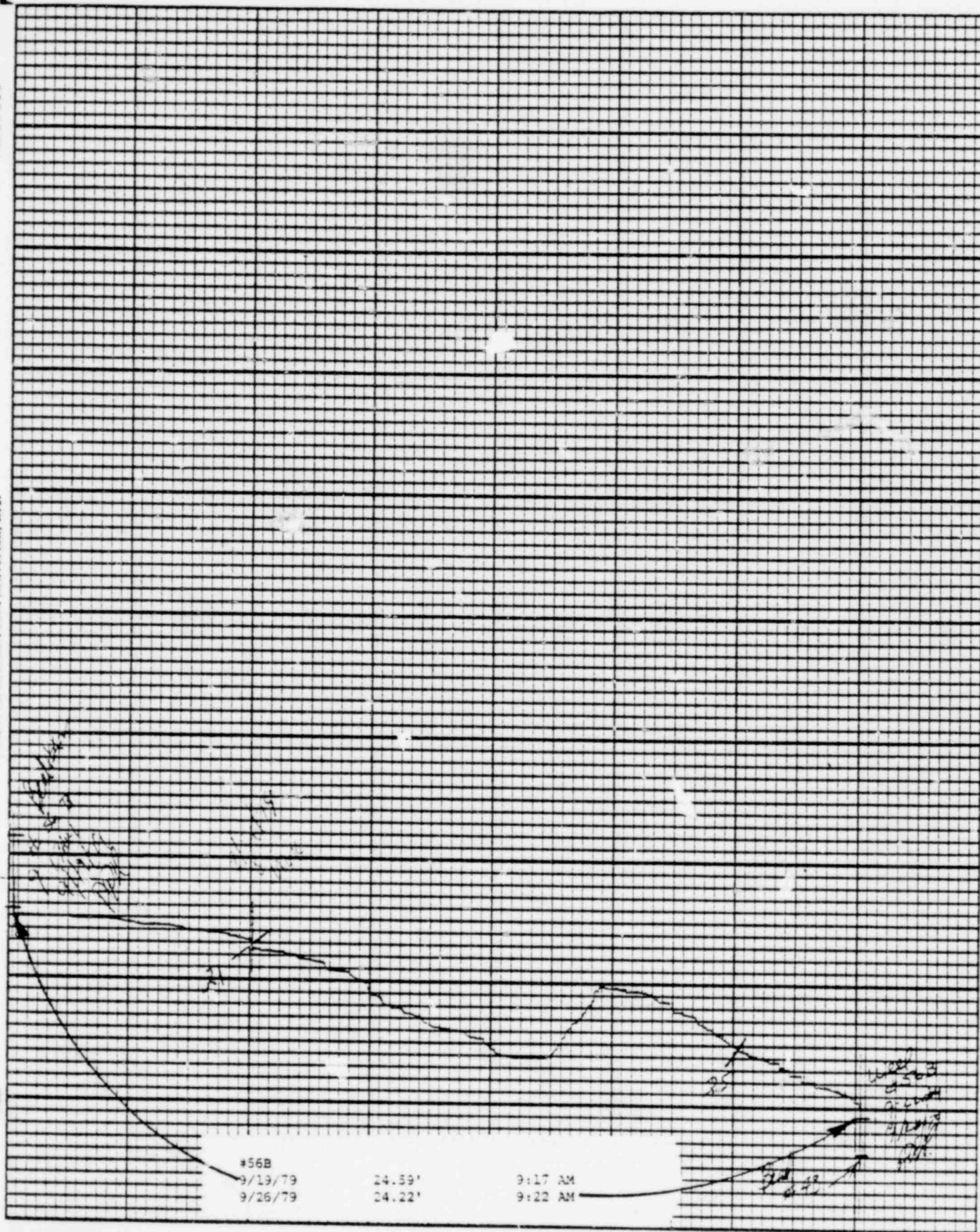
1143 177



POOR ORIGINAL

1143 178



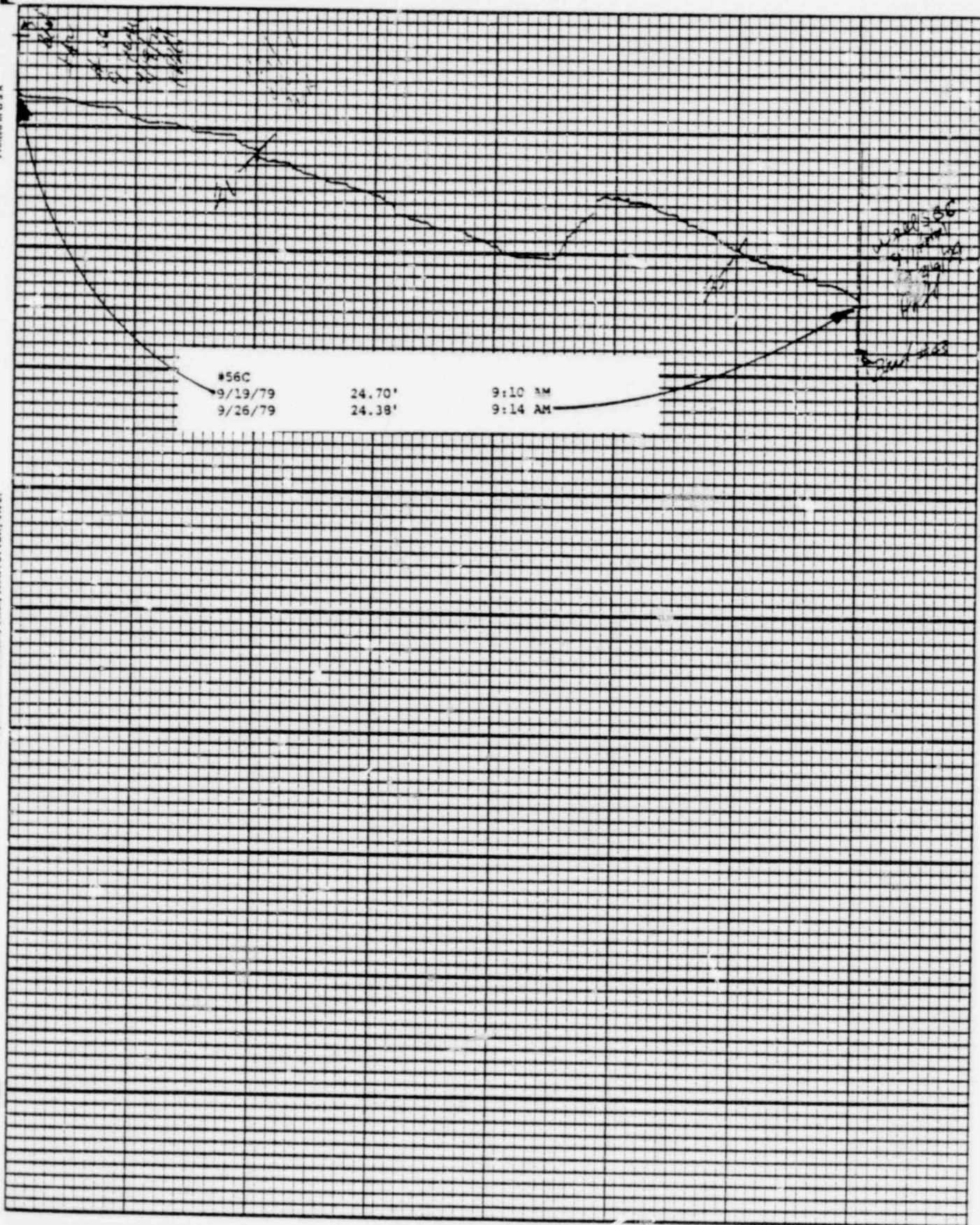


POOR ORIGINAL

1143 179

Printed in U.S.A.

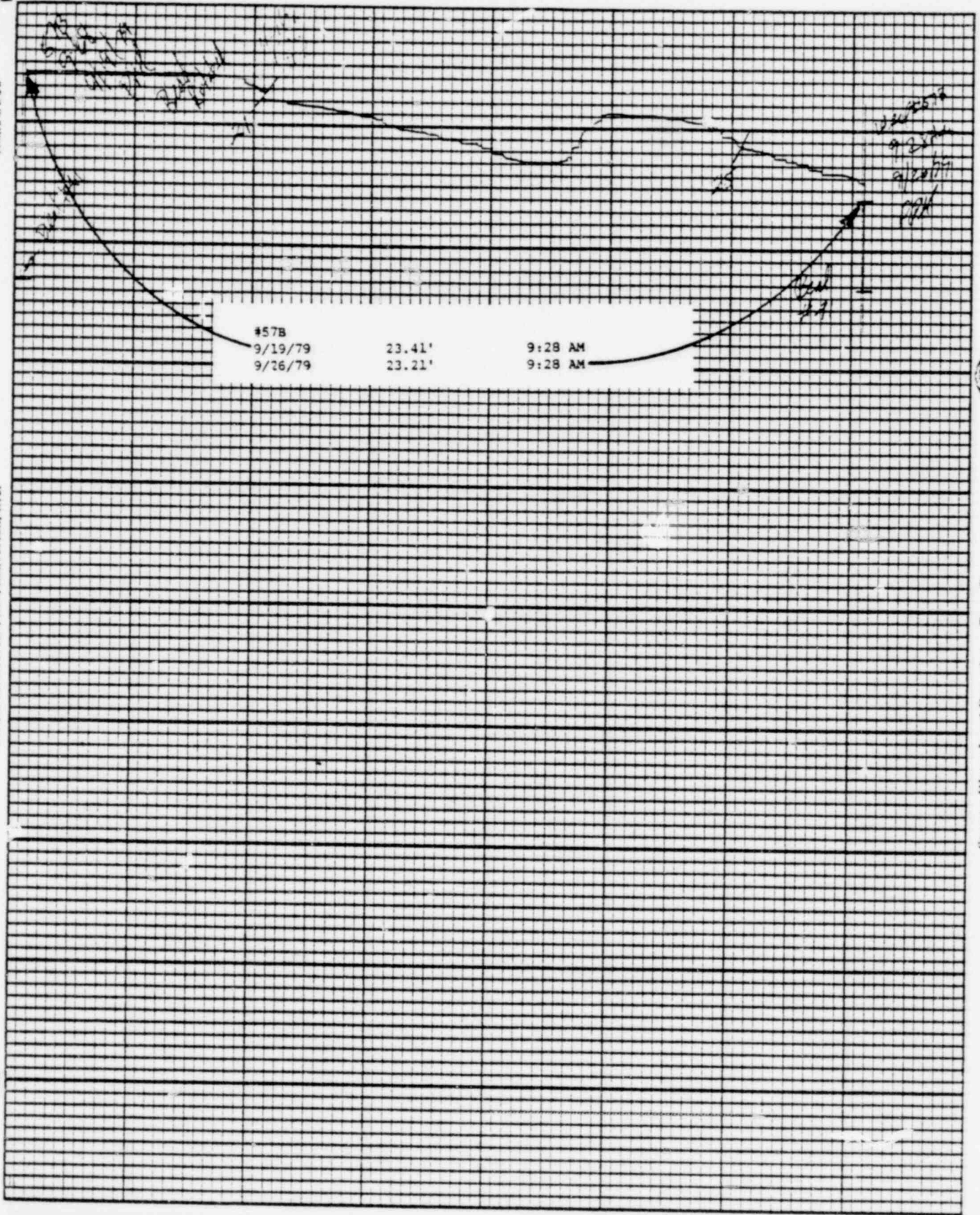
Leupold & Stevens, Inc., Beaverton, Ore.



POOR ORIGINAL

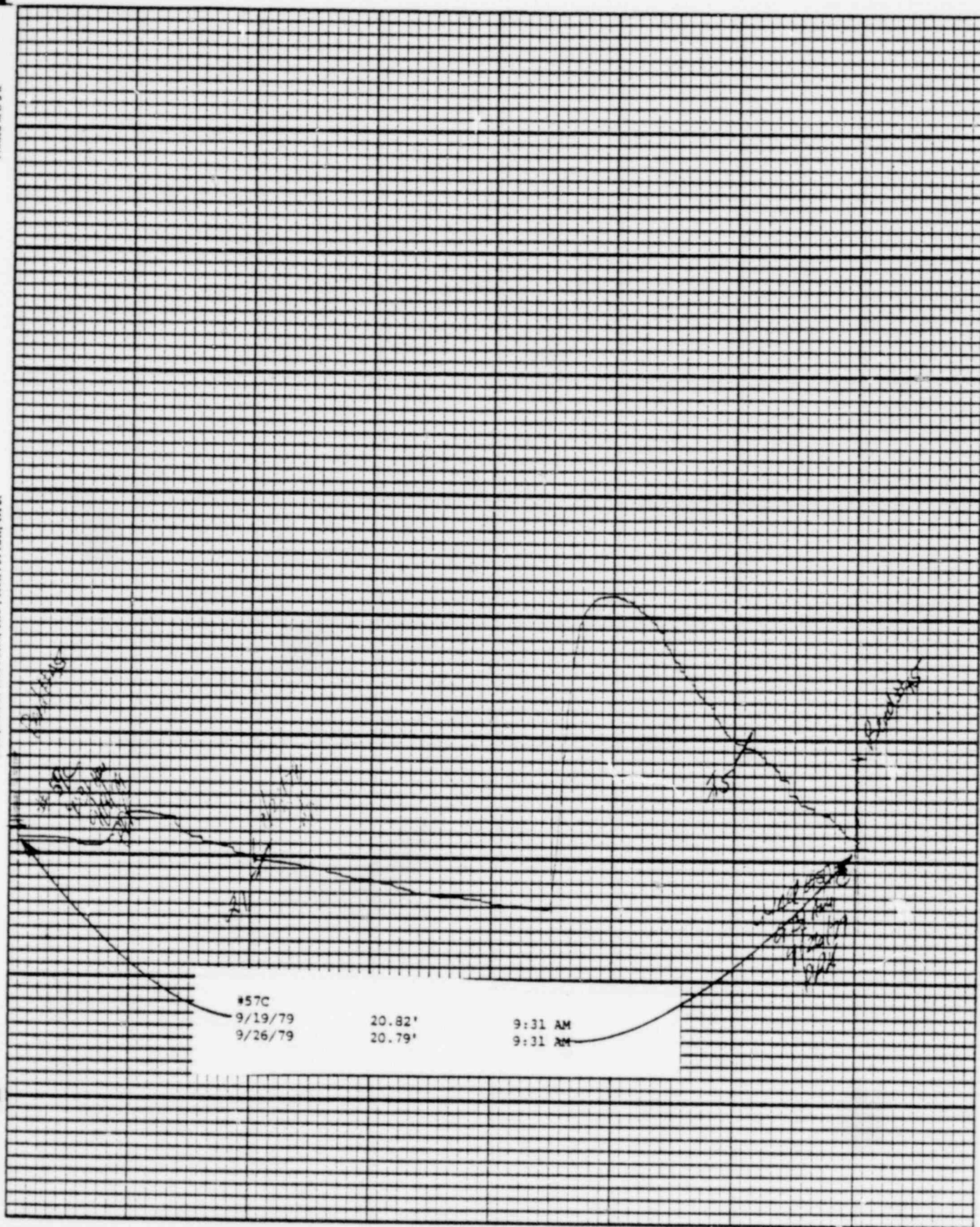
1143 180





POOR ORIGINAL

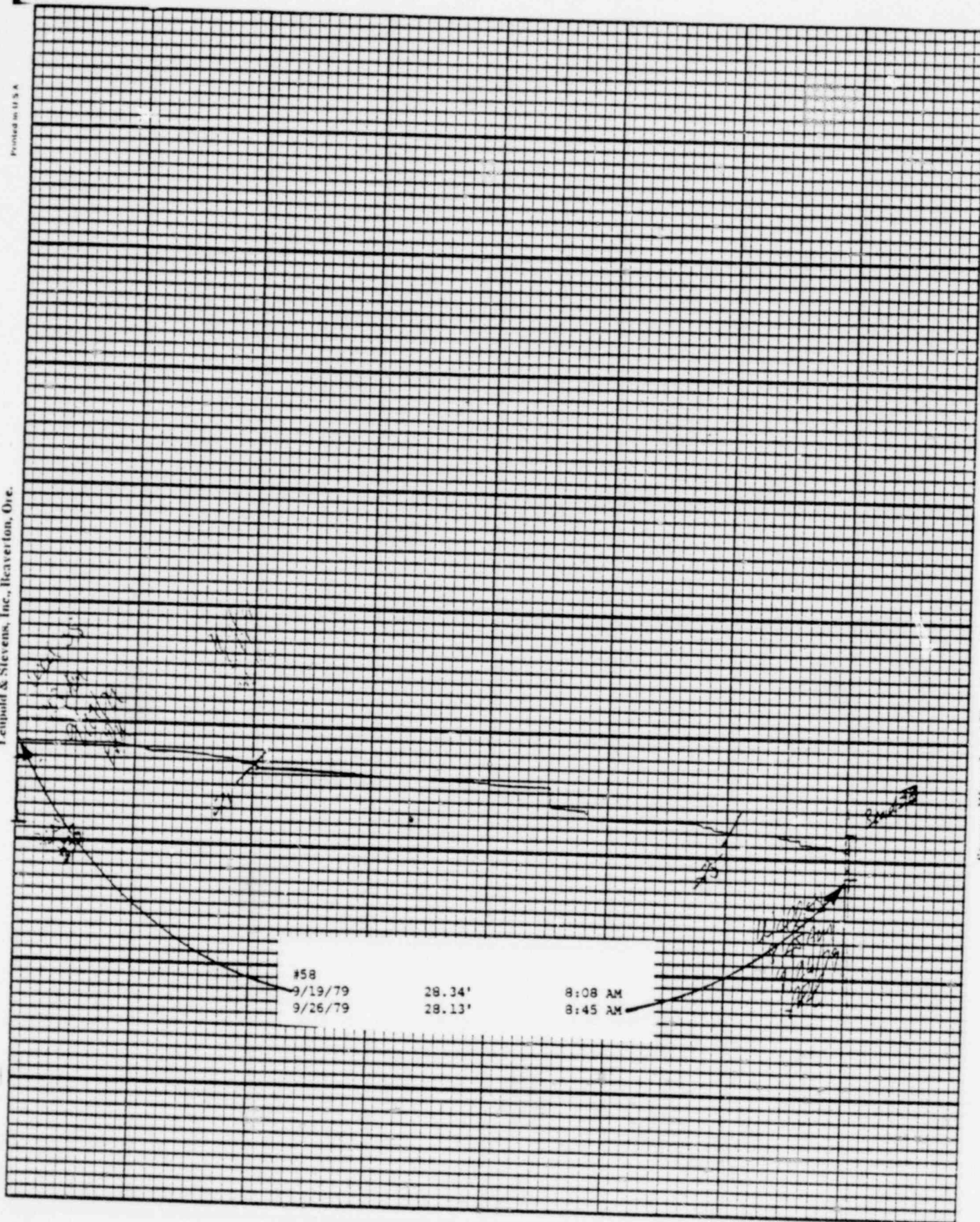
1145 181



POOR ORIGINAL

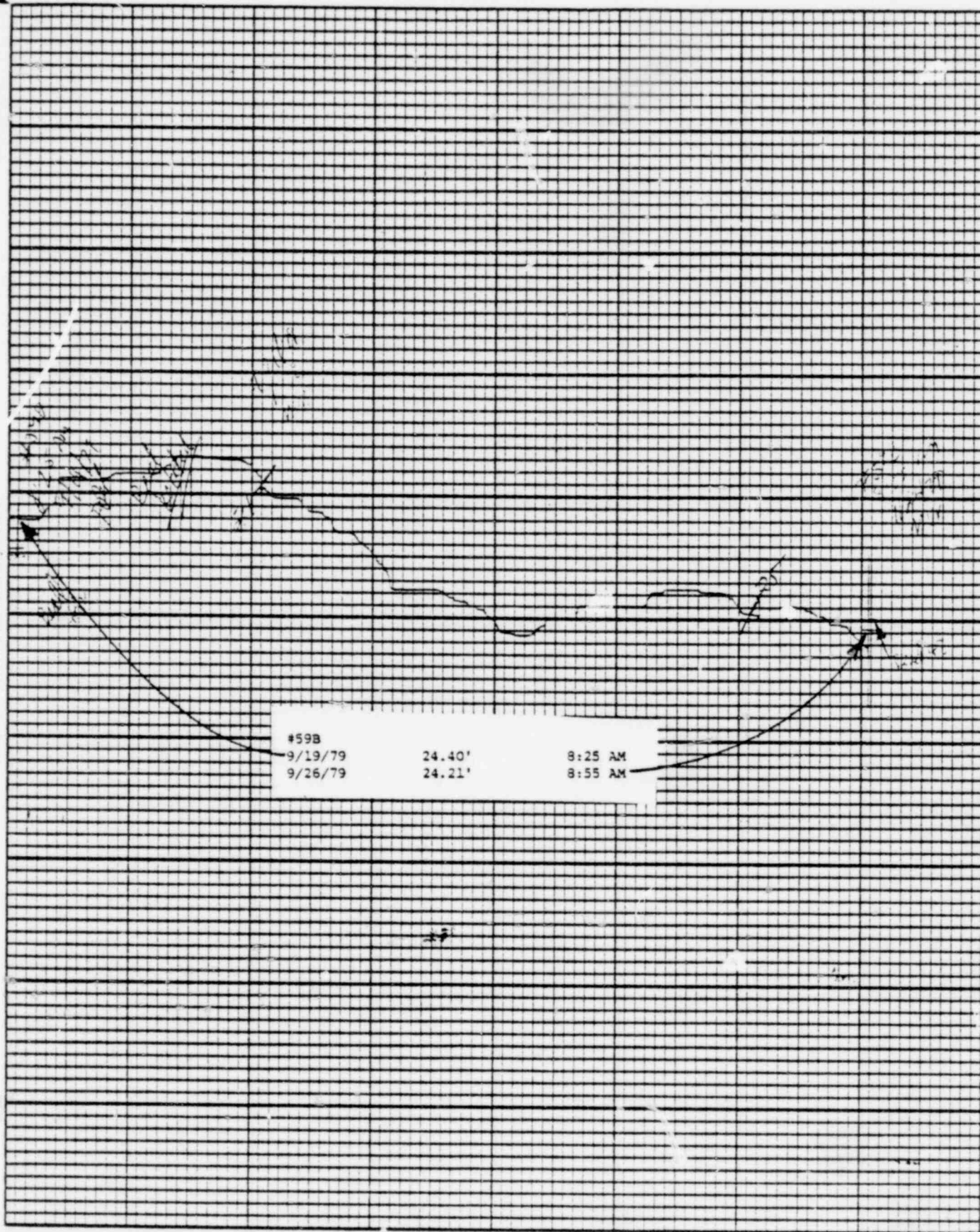
1143 182





POOR ORIGINAL

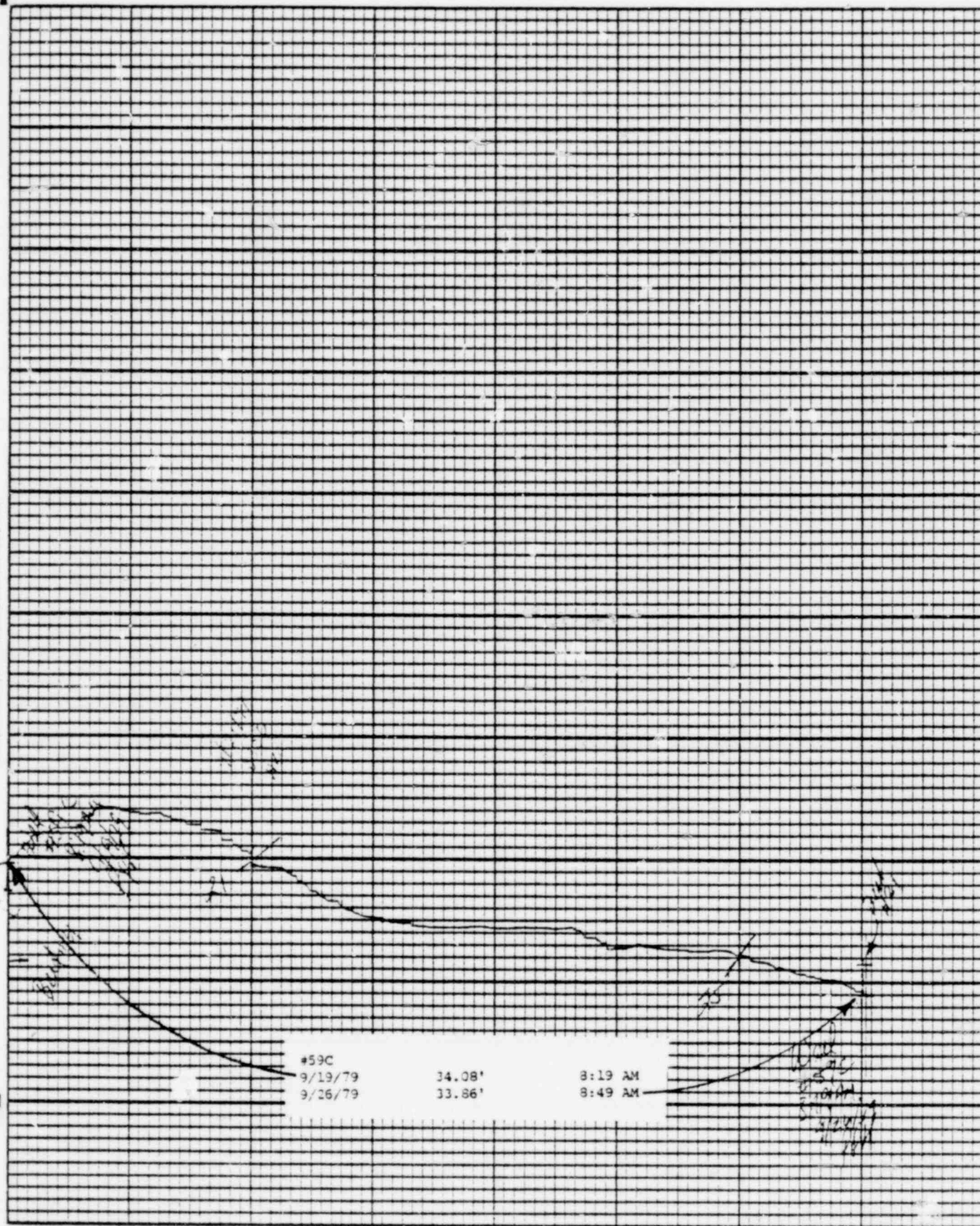
1143 183



POOR ORIGINAL

1143 184





POOR ORIGINAL

1143 185

BAILLY WELLS WITHOUT RECORDERS

9/26/79

<u>WELL #</u>	<u>WATER ELEVATION IN FEET</u>
62	31.93
65	27.25
67	22.94
72	10.85
73	11.41
74	14.53

DBY:bd

1143 186



POND LEVELS

<u>POND</u>	<u>9/26/79</u>
1	28.28
2	30.34
3	28.31
4	23.57
5	23.05
6	33.16
7	DRY
8	DRY
9	28.55
10	39.57
11	39.16
12	36.23
13	38.11

DBY:bd

1143 187

PNEUMATIC PRESSURE TRANSDUCERS

9/26/79

<u>TRANSDUCER</u>	<u>WATER ELEVATION IN FEET</u>
P-1	11.4
P-2	10.2
P-3	7.6
P-4	13.9
P-5	14.6
P-6	14.4

DBY:bd

1143 188



WATER METER READINGS

<u>DATE</u>	<u>TIME</u>	<u>METER READING (GALLONS)</u>	<u>INSTANTANEOUS FLOW RATE (GPM)</u>
-------------	-------------	--	--

Sumo Pump Discharge

9/26/79	11:45 AM	301,656,800	225
---------	----------	-------------	-----

Well Point Discharge

9/26/79	11:15 AM	9,025,589	NOT IN USE
---------	----------	-----------	------------

DBY:bd

POOR ORIGINAL

1143 189