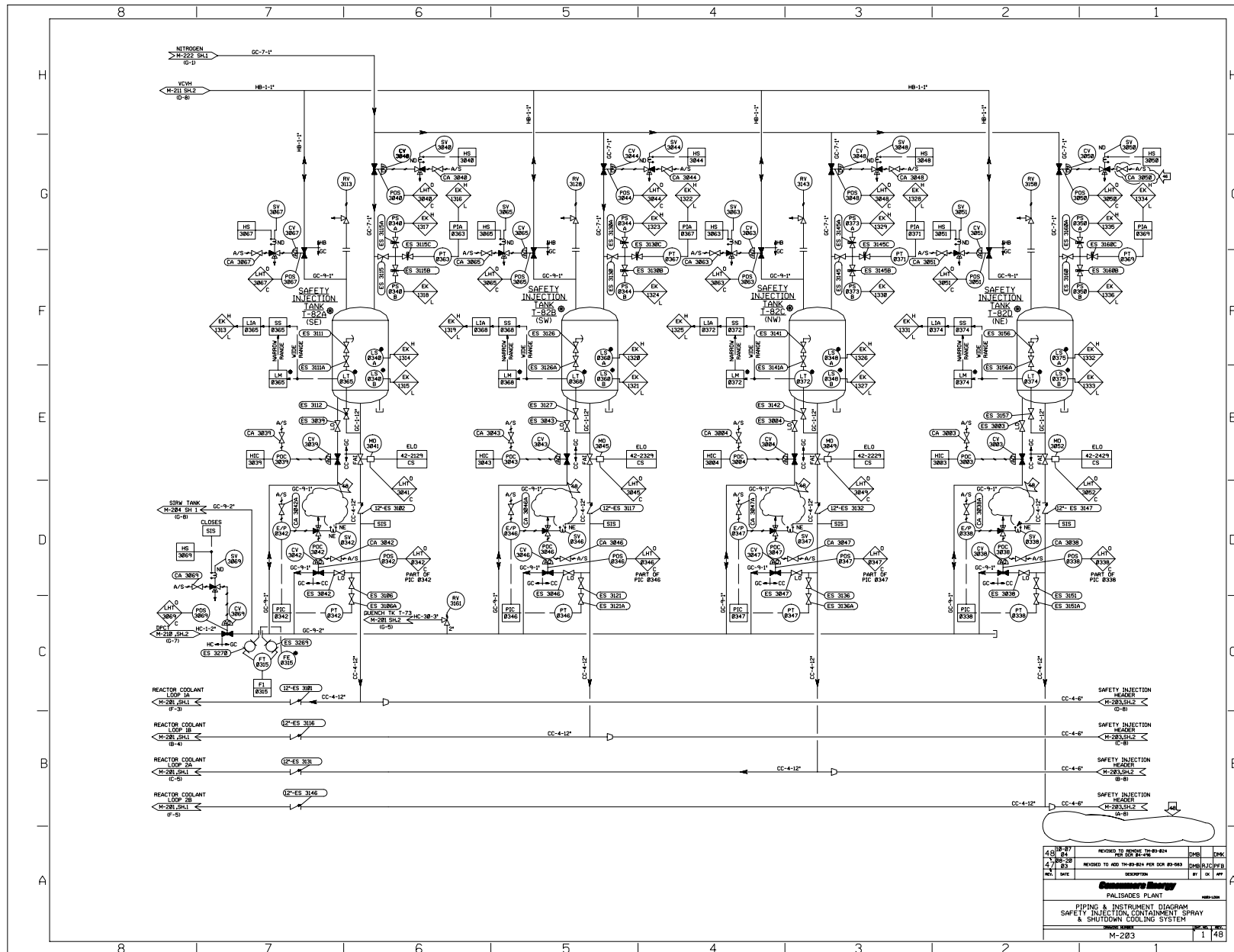
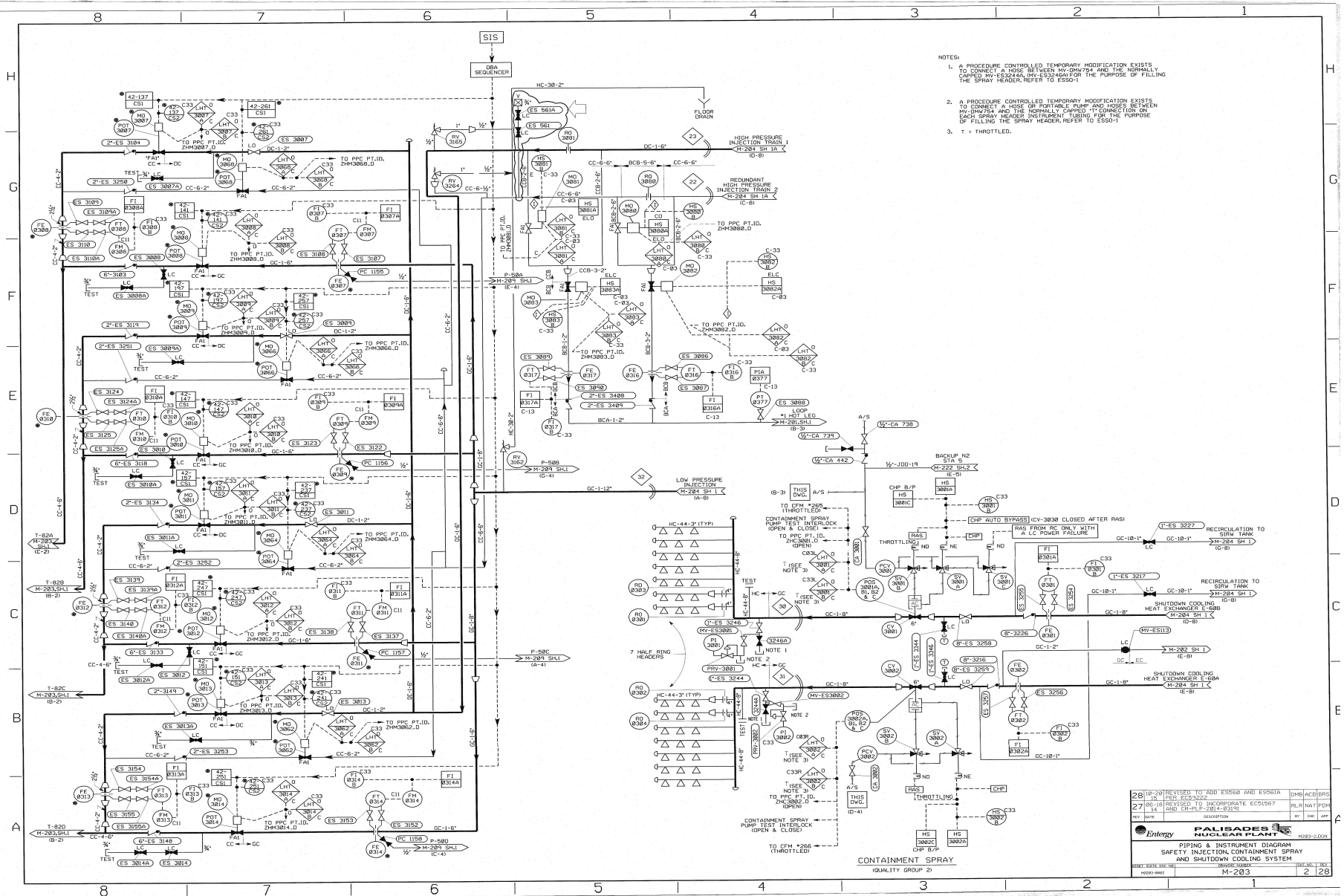


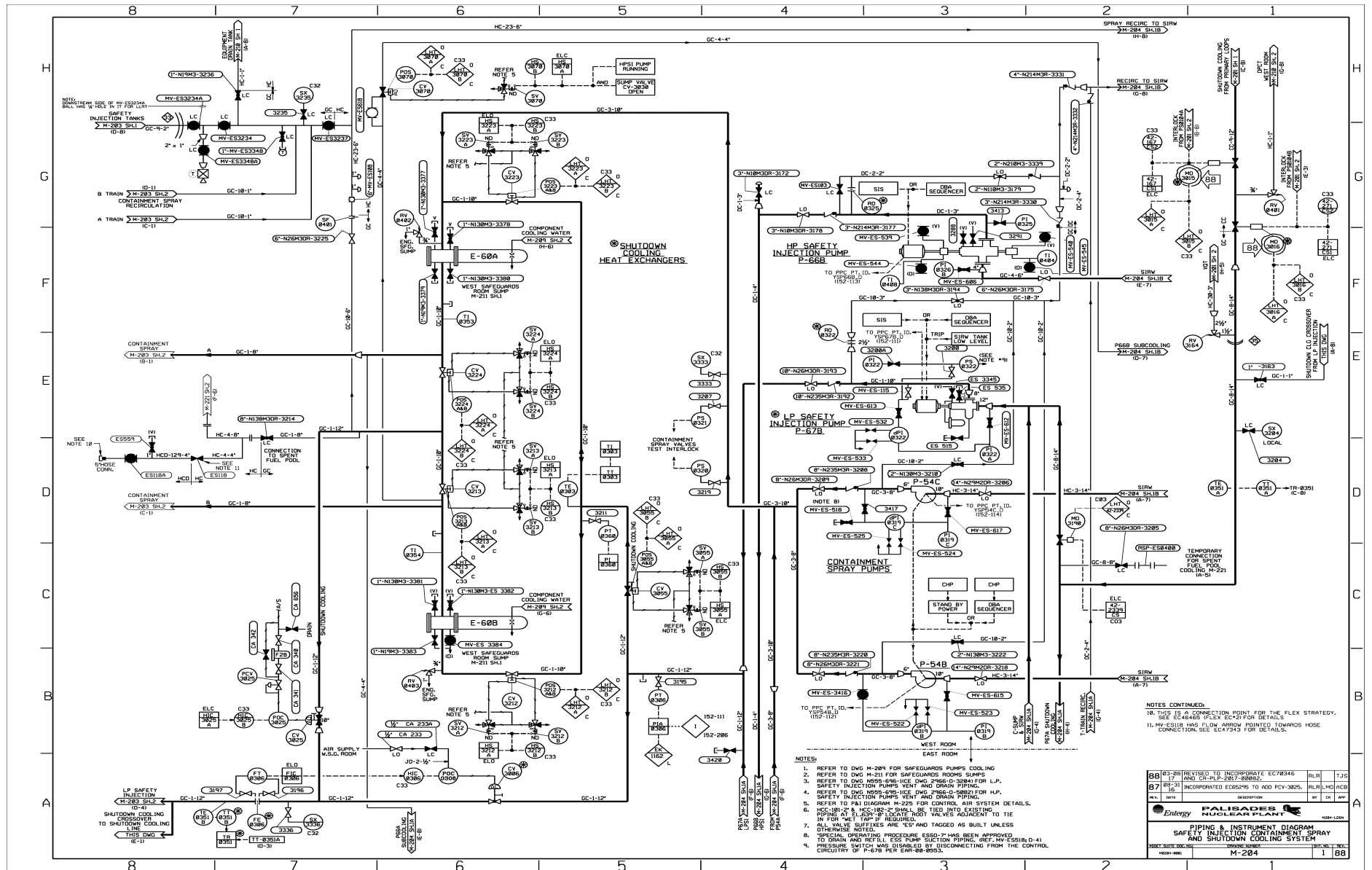
PIPING & INSTRUMENT DIAGRAM
SAFETY INJECTION CONTAINMENT SPRAY AND SHUTDOWN COOLING SYSTEM



PIPING & INSTRUMENT DIAGRAM
SAFETY INJECTION CONTAINMENT SPRAY AND SHUTDOWN COOLING SYSTEM

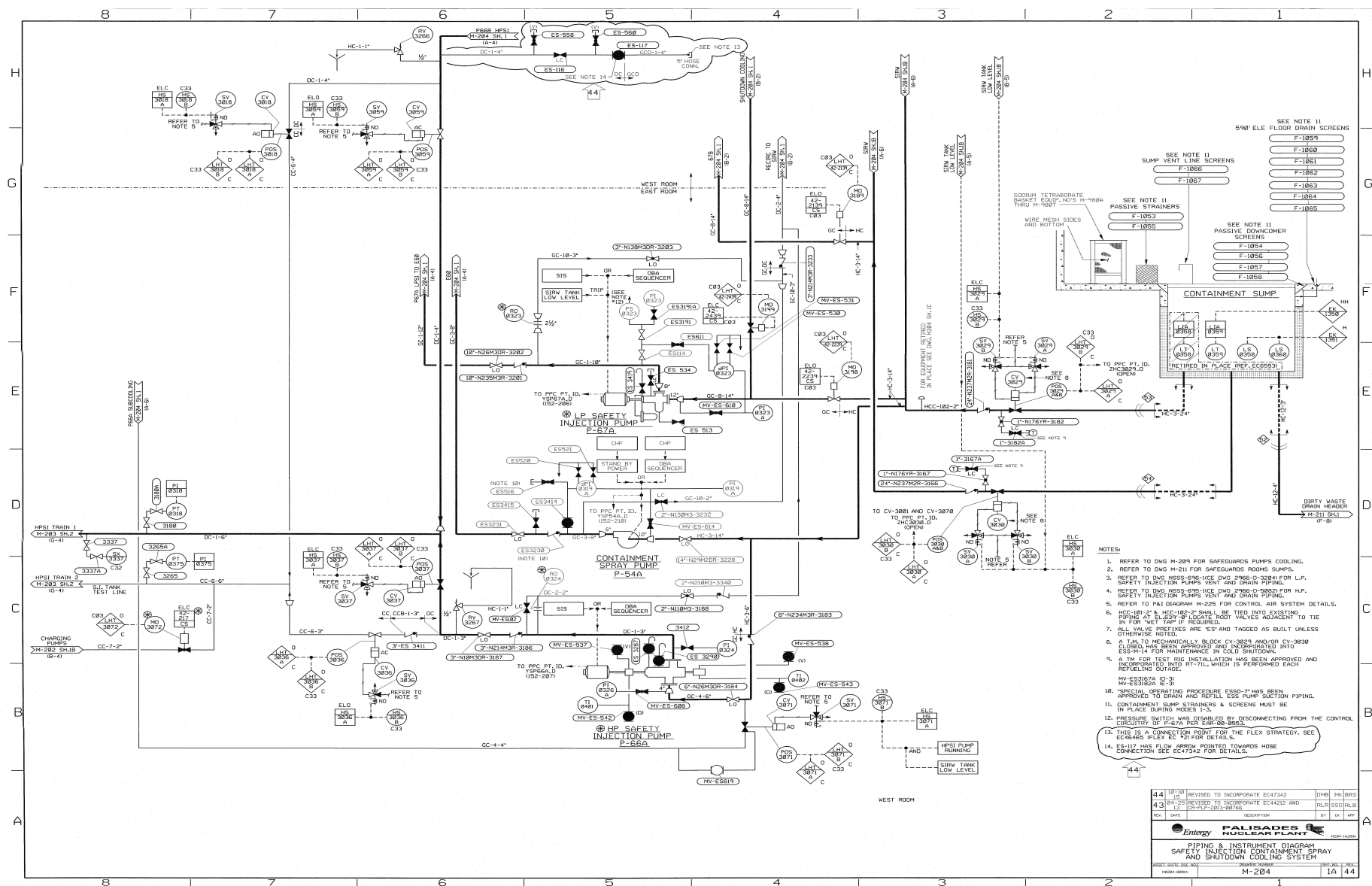


PIPING & INSTRUMENT DIAGRAM SAFETY INJECTION CONTAINMENT SPRAY AND SHUTDOWN COOLING SYSTEM

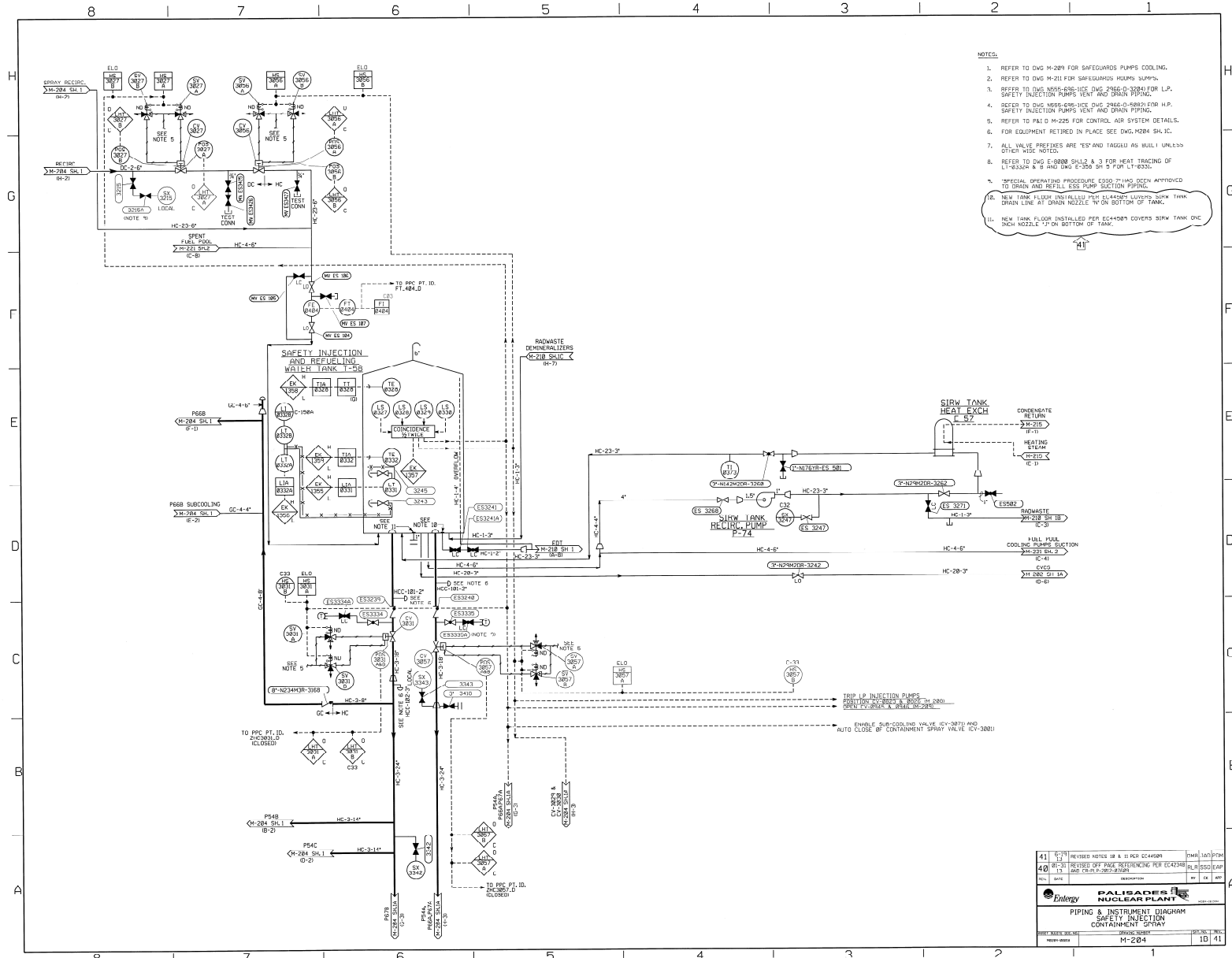


PIPING & INSTRUMENT DIAGRAM

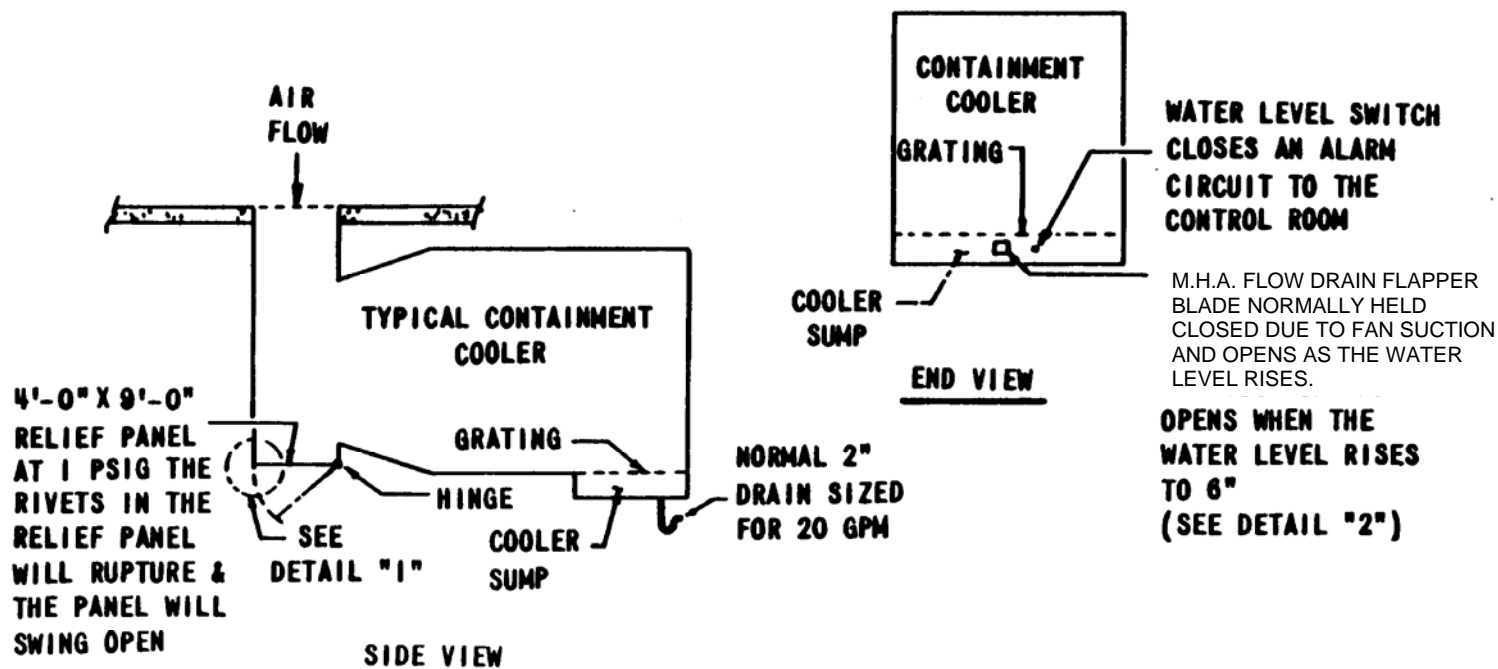
SAFETY INJECTION CONTAINMENT SPRAY AND SHUTDOWN COOLING SYSTEM



PIPING & INSTRUMENT DIAGRAM
SAFETY INJECTION CONTAINMENT SPRAY

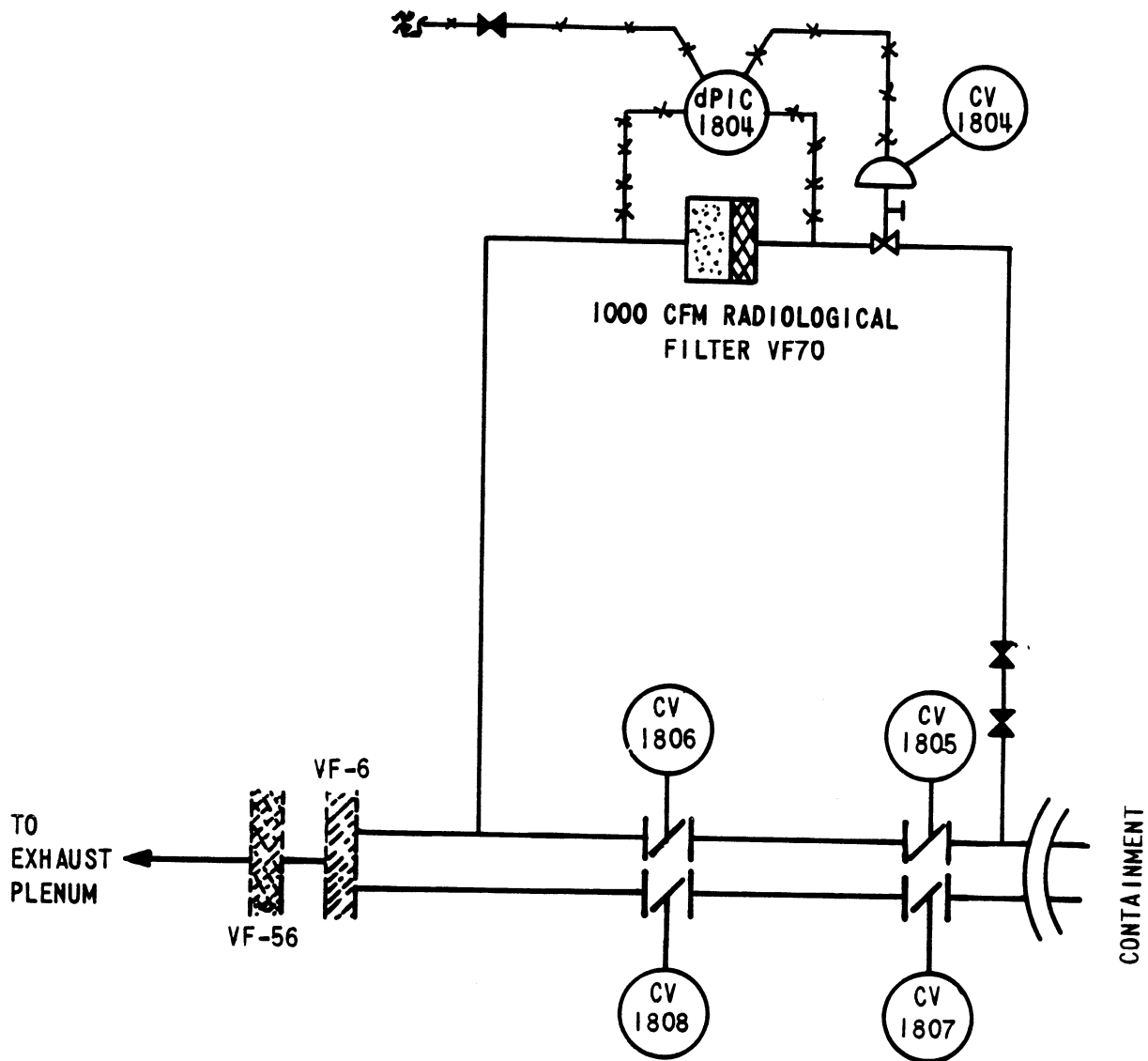


CONTAINMENT AIR COOLERS RELIEF PANEL & CONDENSATE DRAIN

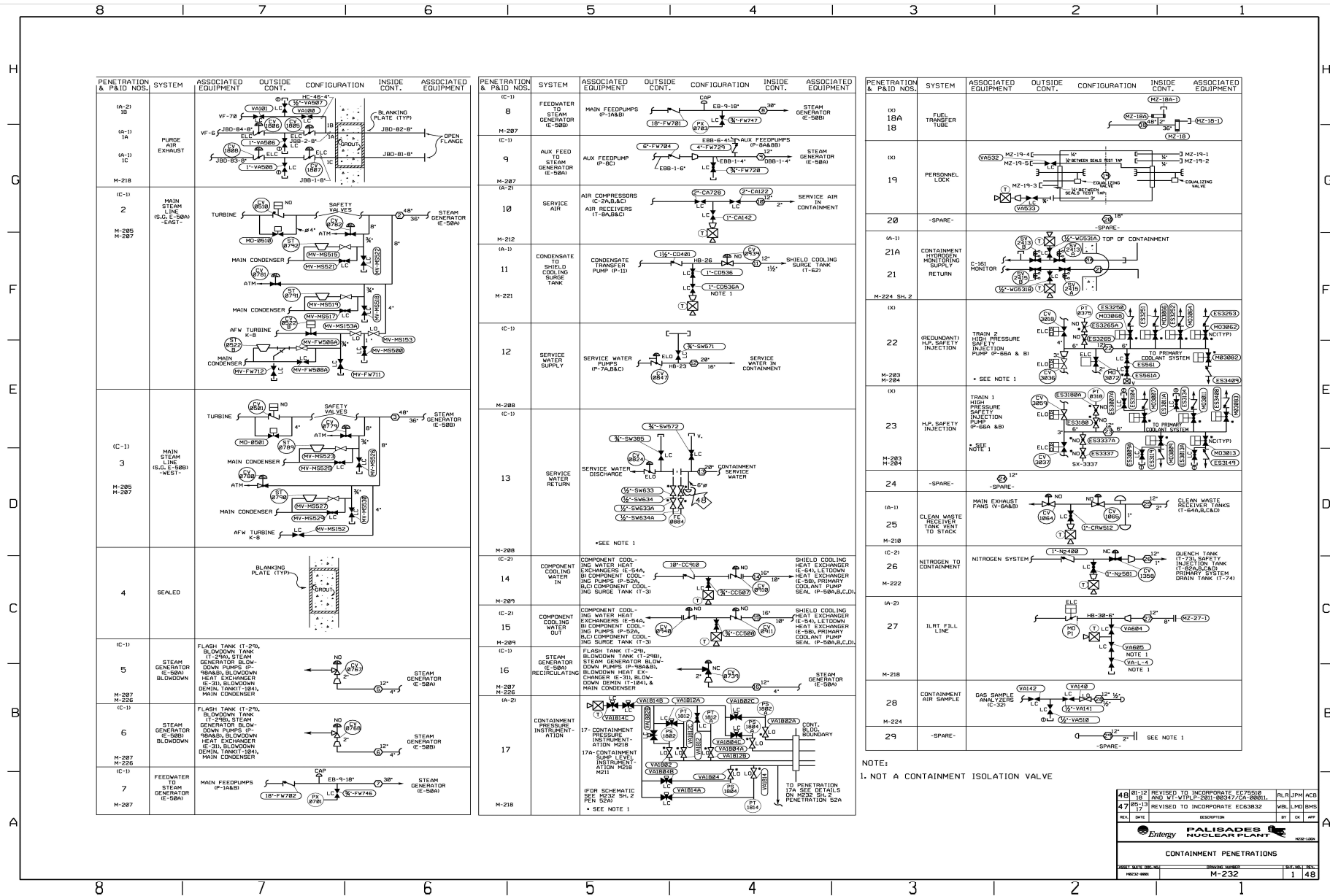


(TYPICAL - SEE PLANT DRAWING M-123 AND M-124 FOR ACTUAL "AS-BUILT" FOR EACH PANEL.)

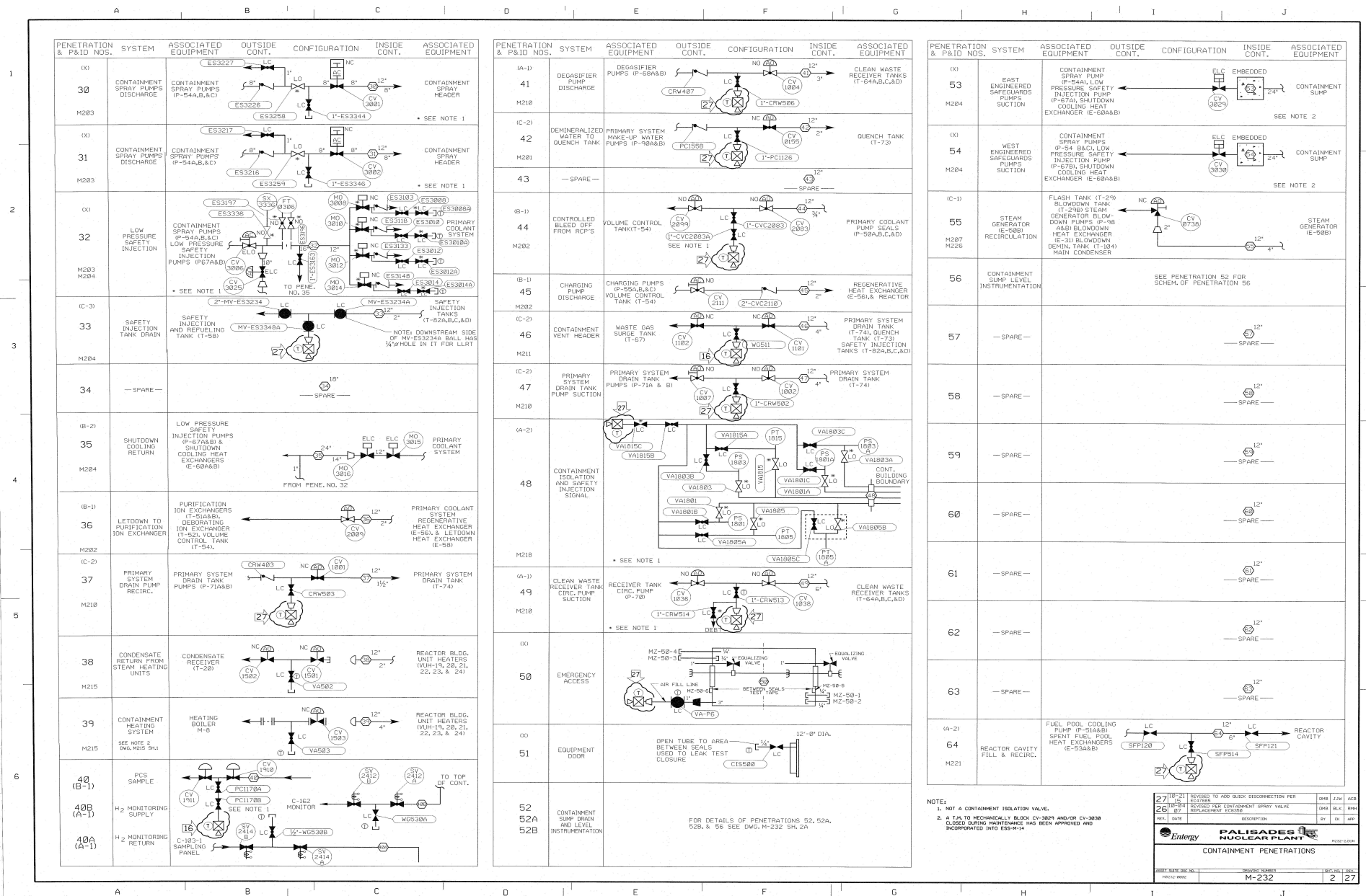
CONTAINMENT VENT FILTER



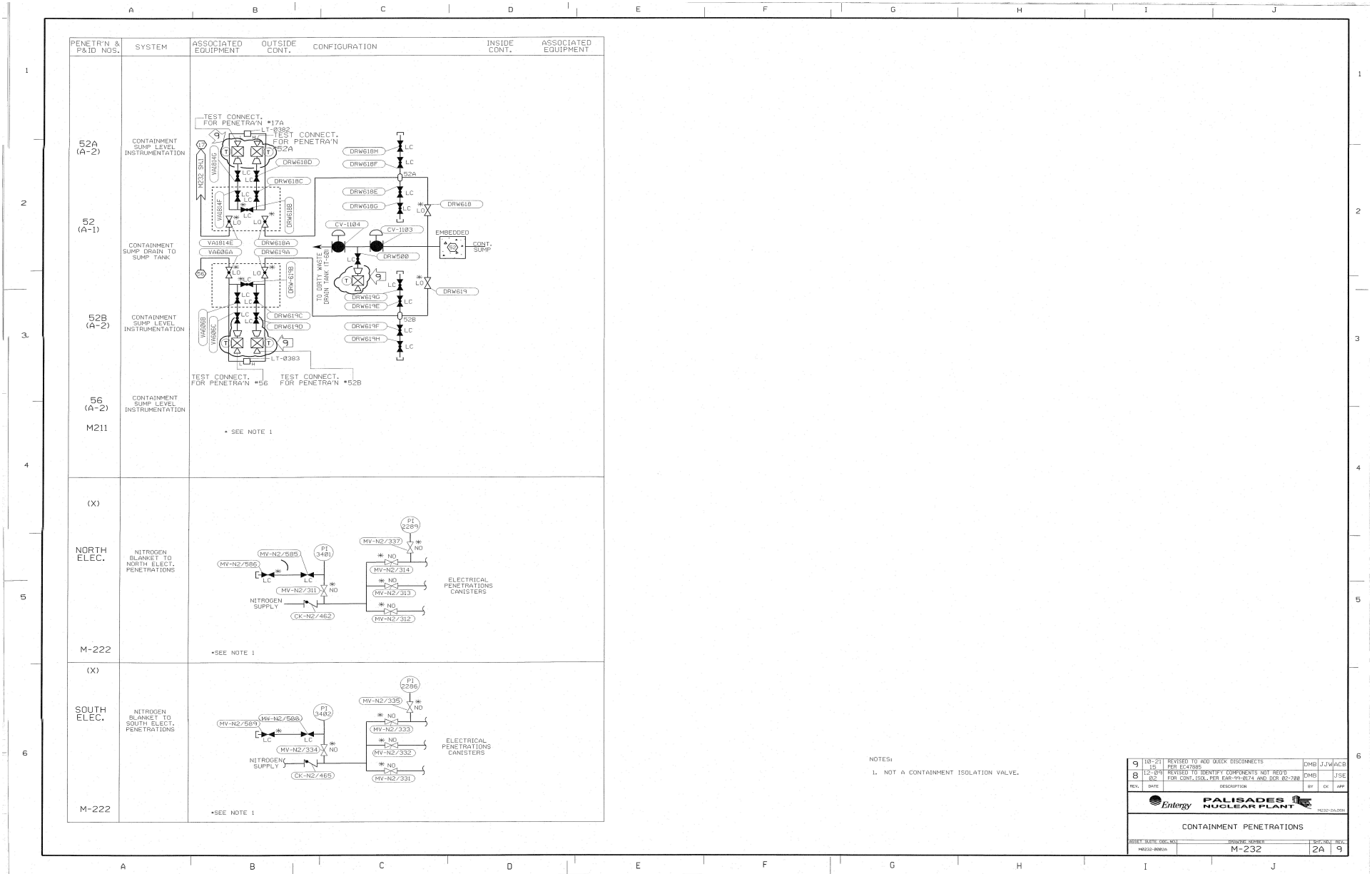
CONTAINMENT PENETRATIONS



CONTAINMENT PENETRATIONS



CONTAINMENT PENETRATIONS



8 7 6 5 4 3 2 1
CONTAINMENT PENETRATIONS
1 2 3 4 5 6 7 8

PENETRATION NO. & P.&ID	SYSTEM	ASSOCIATED EQUIPMENT	OUTSIDE CONT.	CONFIGURATION	INSIDE CONT.	ASSOCIATED EQUIPMENT
(C-2) 65 M-212	INSTRUMENT AIR	AIR DRYER (M-21) AIR RECEIVER TANKS (T-6A,B&C) AIR COMPRESSORS (C-2A,B&C)	2"-263-CA488 3/4"-34-CAB2 3/4"-34-CAB1	12"	VARIOUS INSTRUMENTS	* SEE NOTE 1
(A-2) 66 M-218	ILRT INSTRUMENT LINE	ILRT INSTRUMENTATION	1/2"-VA6B2 1/2"-VA6B1 1/2"-VA6B3	12"	TO CONTAINMENT ATMOSPHERE	
(A-1) 67 M-210	CLEAN WASTE RECEIVER TANK PUMP RECIRC.	RECEIVER TANK CIRC. PUMP (P-203)	CRW488 1/2"-CV-1017 1/2"-CV-1015	12"	CLEAN WASTE RECEIVER TANK (T-6A,B,C&D)	
(A-1) 68 M-218	AIR SUPPLY TO AIR ROOM	AIR SPACE PURGE FAN (V-46)	1/2"-CV-1014 1/2"-CV-1013 1/2"-VA508	12"	OPEN FLUENCE	

PENETRATION NO. & P.&ID	SYSTEM	ASSOCIATED EQUIPMENT	OUTSIDE CONT.	CONFIGURATION	INSIDE CONT.	ASSOCIATED EQUIPMENT
(A-1) 69 M-210	CLEAN WASTE RECEIVER TANK PUMP SUCTION	RECEIVER TANK PUMP (P-69A&B) RADWASTE DEMIN'S (T-55A,B,C&D)	1/2"-CV-1014 1/2"-CV-1013 1/2"-CV-1015	12"	CLEAN WASTE RECEIVER TANK (T-6A,B,C&D)	
70	— SPARE —			12"	SPARE	
71	— SPARE —			12"	SPARE	
(A-2) 72 M-221	REACTOR REFUELING CAVITY DRAIN	FUEL POOL COOLING PUMPS (P-21A&B) SPENT FUEL POOL HEAT EXCHANGERS (E-53A&B)	1/2"-SFP118 1/2"-SFP115 1/2"-SFP117	12"	REACTOR CAVITY	
(C-1) 73	AUX FEED TO STEAM GENERATOR (E-50B)	AUX FEEDPUMP (P-8C) EBB-5-4" 4"-CK-FW5728 5"-CK-FW5703 EBB-2-6"	1/2"-CV-1014 1/2"-CV-1013 1/2"-CV-1015	12"	TO STEAM GENERATOR (E-50B)	

PENETRATION NO. & P.&ID	SYSTEM	ASSOCIATED EQUIPMENT	OUTSIDE CONT.	CONFIGURATION	INSIDE CONT.	ASSOCIATED EQUIPMENT
(X) NORTH ELEC M-222	NITROGEN BLANKET TO NORTH ELEC PENETRATIONS					FOR DETAILS SEE M-232 SH.2A
(X) SOUTH ELEC M-222	NITROGEN BLANKET TO SOUTH ELEC PENETRATIONS					FOR DETAILS SEE M-232 SH.2A

18-21	REVISED TO ADD ORCA DISCONNECTS	DHB	LJV	ACB
15	ADDED TO SPARE PENETRATIONS FOR USE FOR 2000 BARRIS	DHB	BLR	TLO
REV.	DATE	DESCRIPTION	BY	CHK
1	10/1/00	CONTAINMENT PENETRATIONS	3	16

REACTOR CAVITY FLOODING SYSTEM

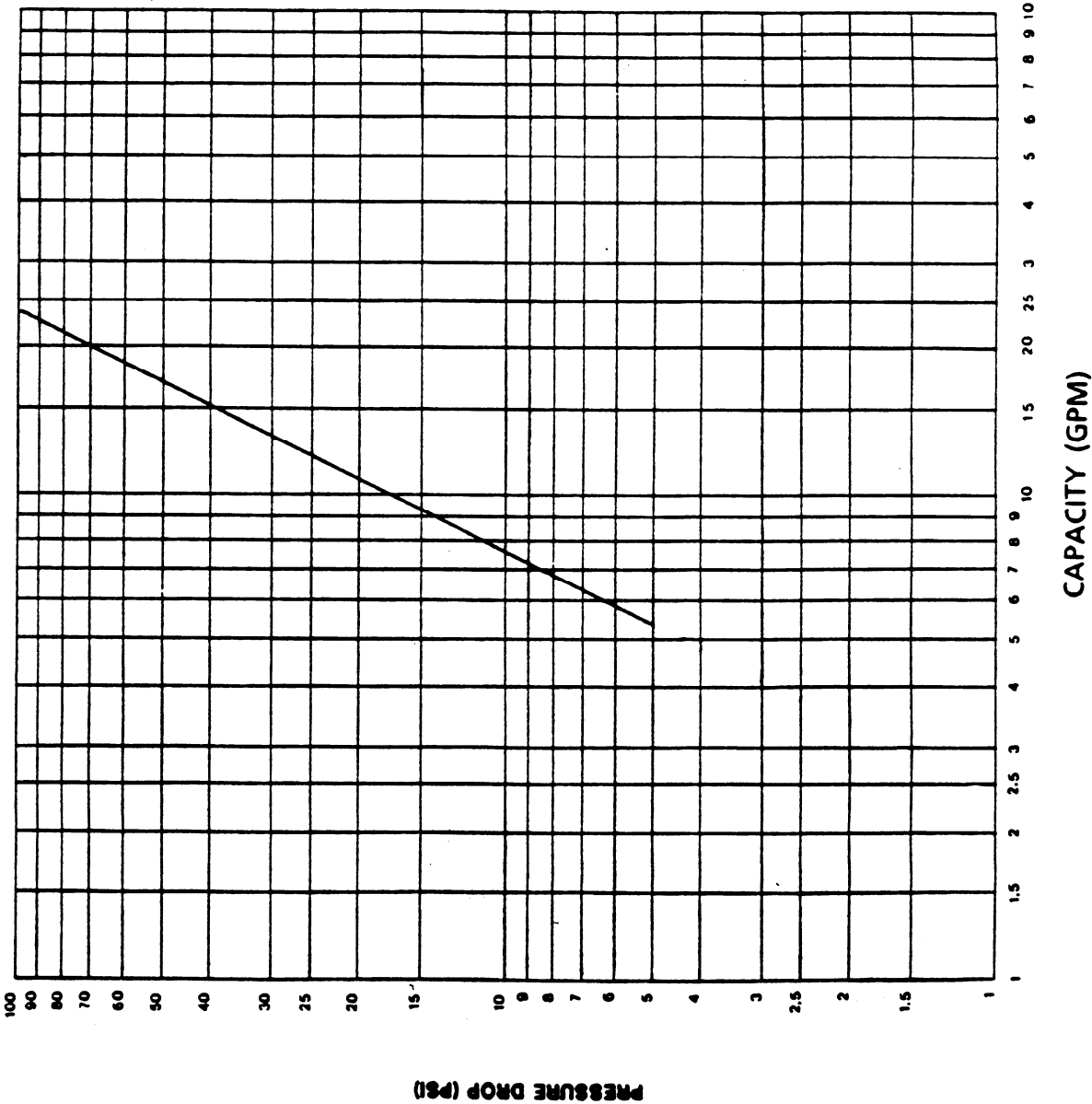
Portions of this page have been
redacted per 10 CFR 2.390(d)(1).

CAPACITY CURVE 1713A NOZZLE

NOTE:
MINIMUM FLOW IS 5.5 (GPM)

FLOW DATA

Pressure Drop (PSI)	Flow (GPM)
10	7.6
20	10.7
30	13.3
40	15.2
50	17.0



R-5334