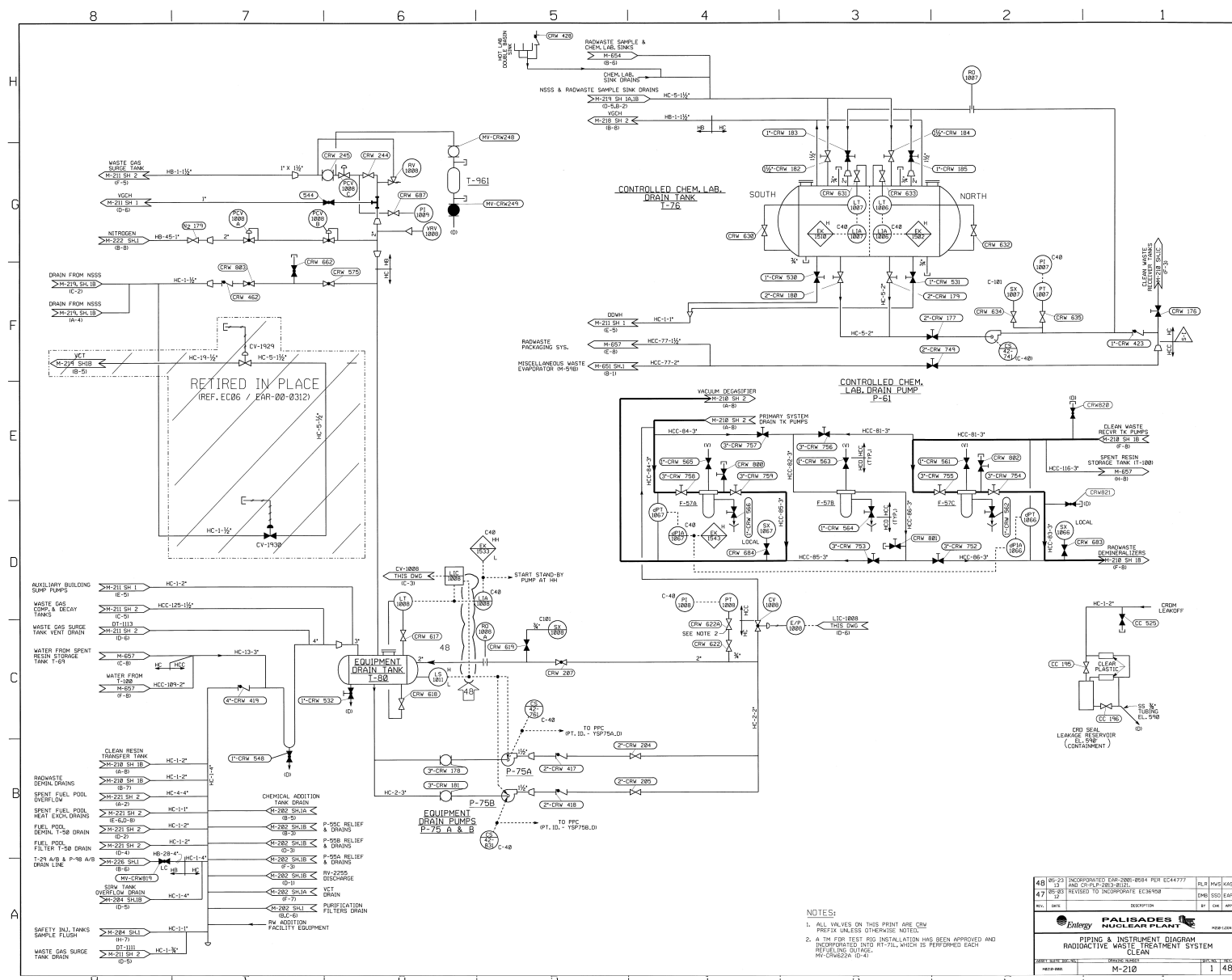


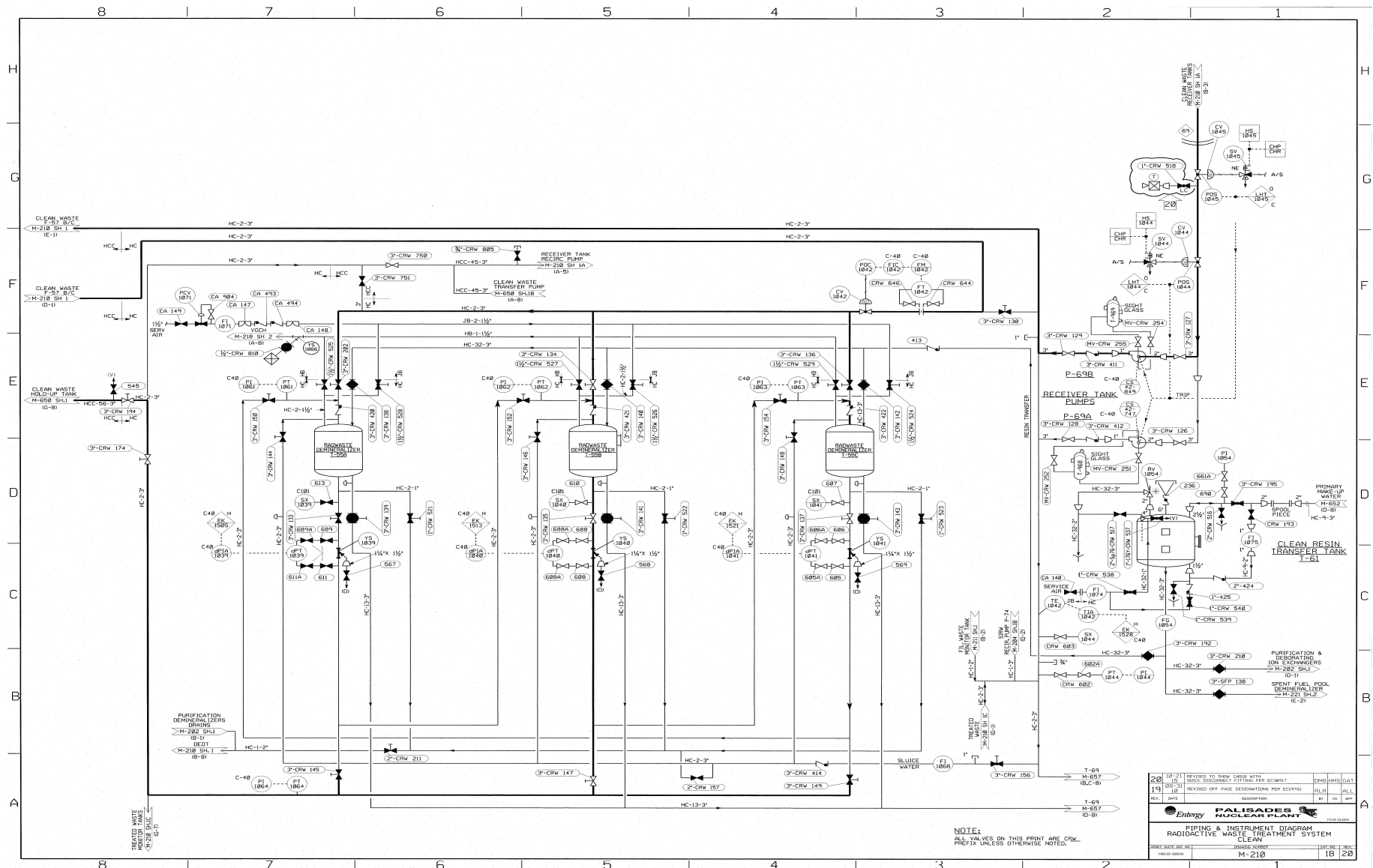
PIPING AND INSTRUMENT DIAGRAM  
RADIOACTIVE WASTE TREATMENT SYSTEM CLEAN



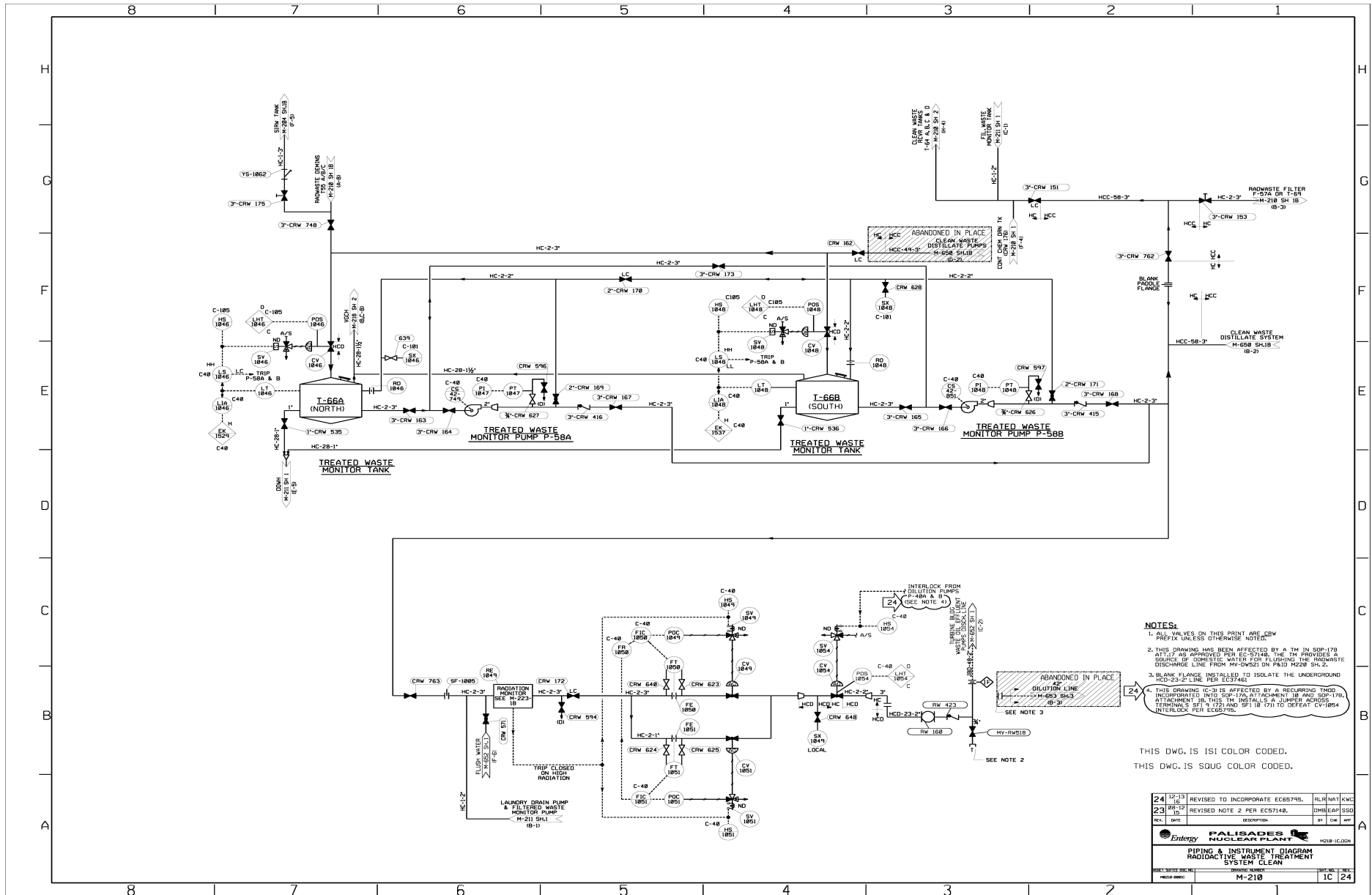




PIPING AND INSTRUMENT DIAGRAM  
RADIOACTIVE WASTE TREATMENT SYSTEM CLEAN

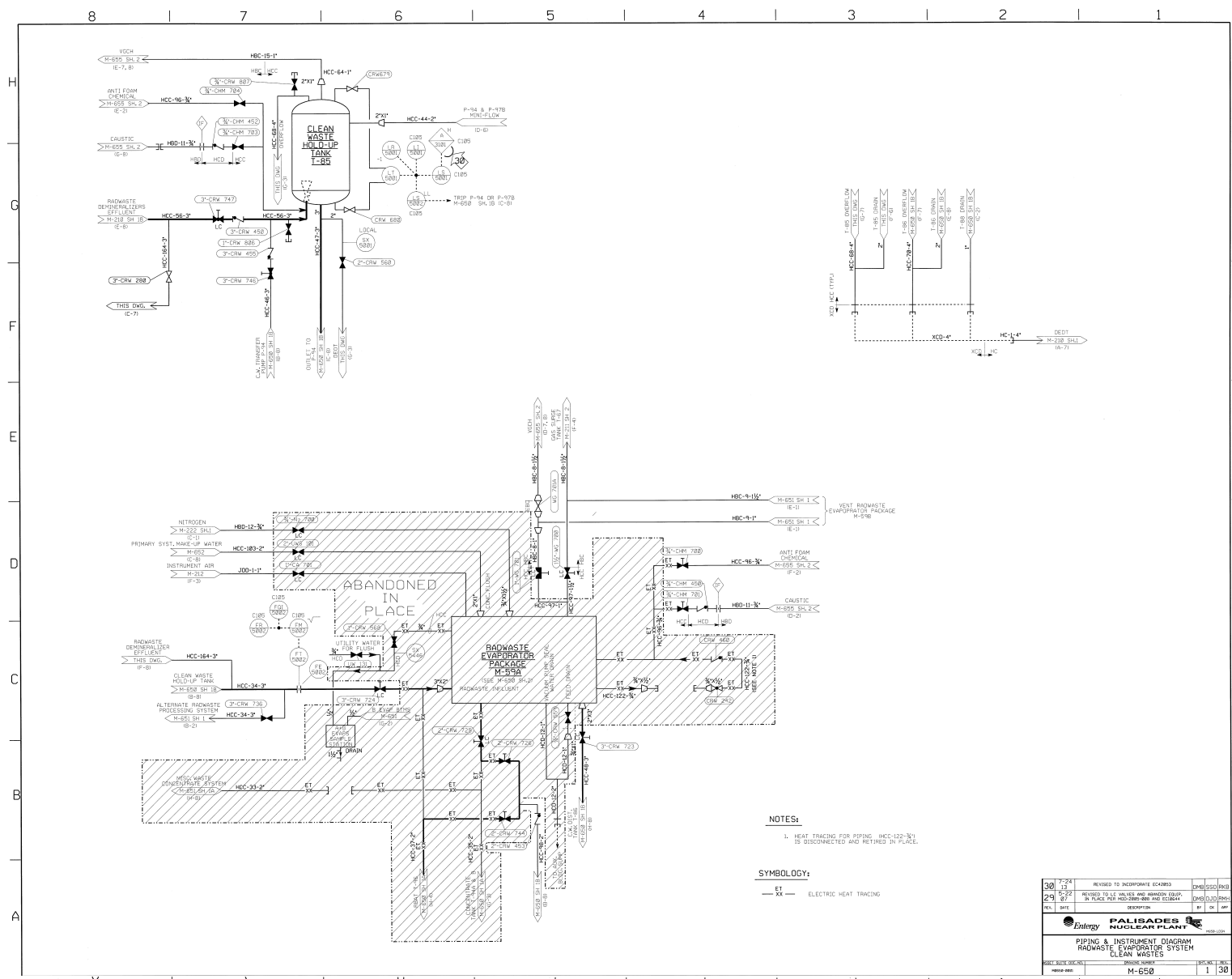


PIPING AND INSTRUMENT DIAGRAM  
RADIOACTIVE WASTE TREATMENT SYSTEM CLEAN

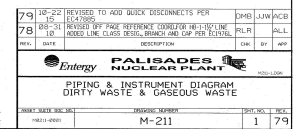


40 18-21 REVISED TO ADD QUICK DISCONNECT DNE/JWW/ACH  
39 18-21 REVISED TO INCORPORATE EC45561 RLP/DJO/JWW  
DATE DESCRIPTION BY CH JWW

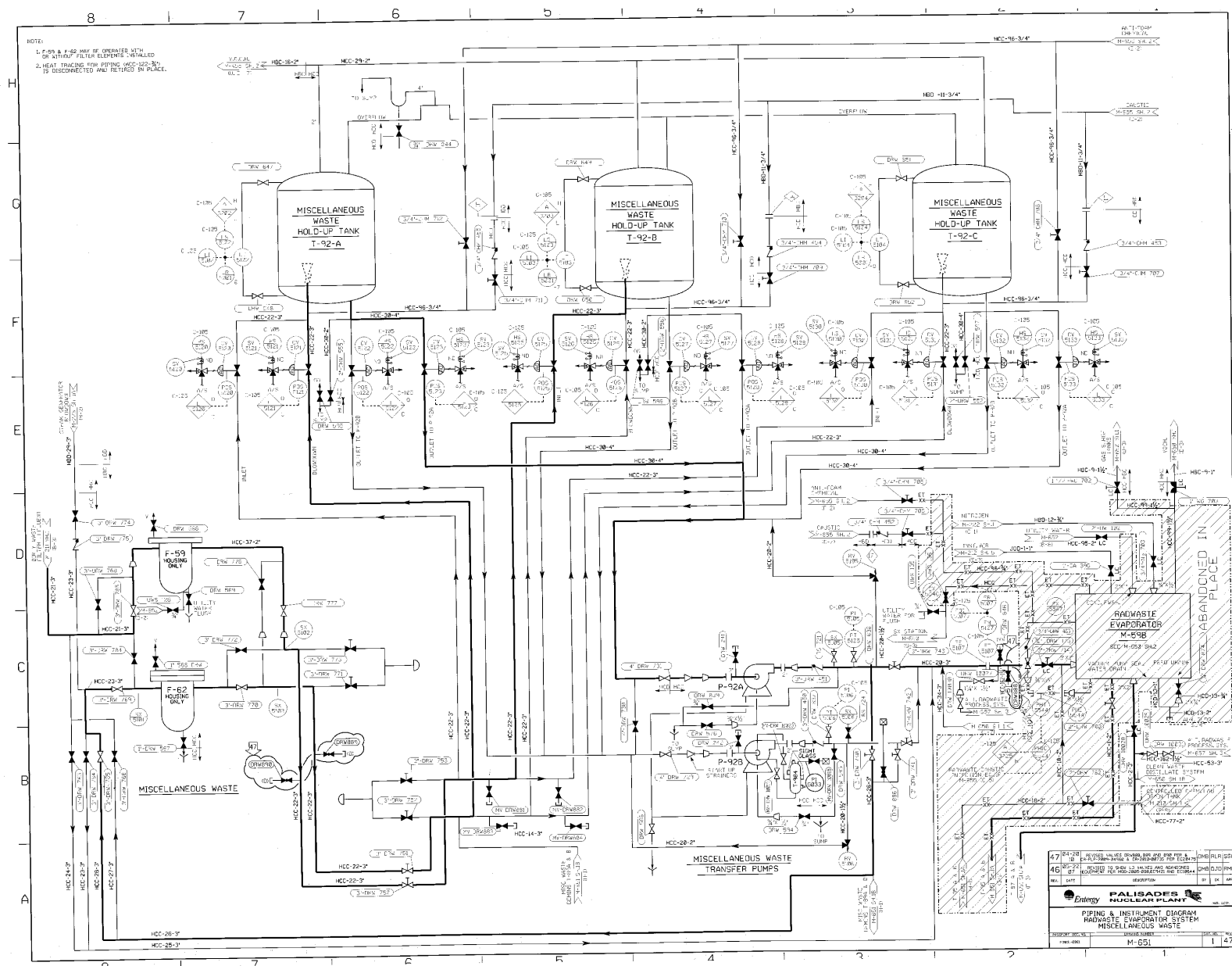
Entergy **PALISADES NUCLEAR PLANT** M-210  
SHEET 0011 OF 0011 PROJECT NUMBER M-210 SHEET 1 OF 1



## \*--RETIRED IN PLACE



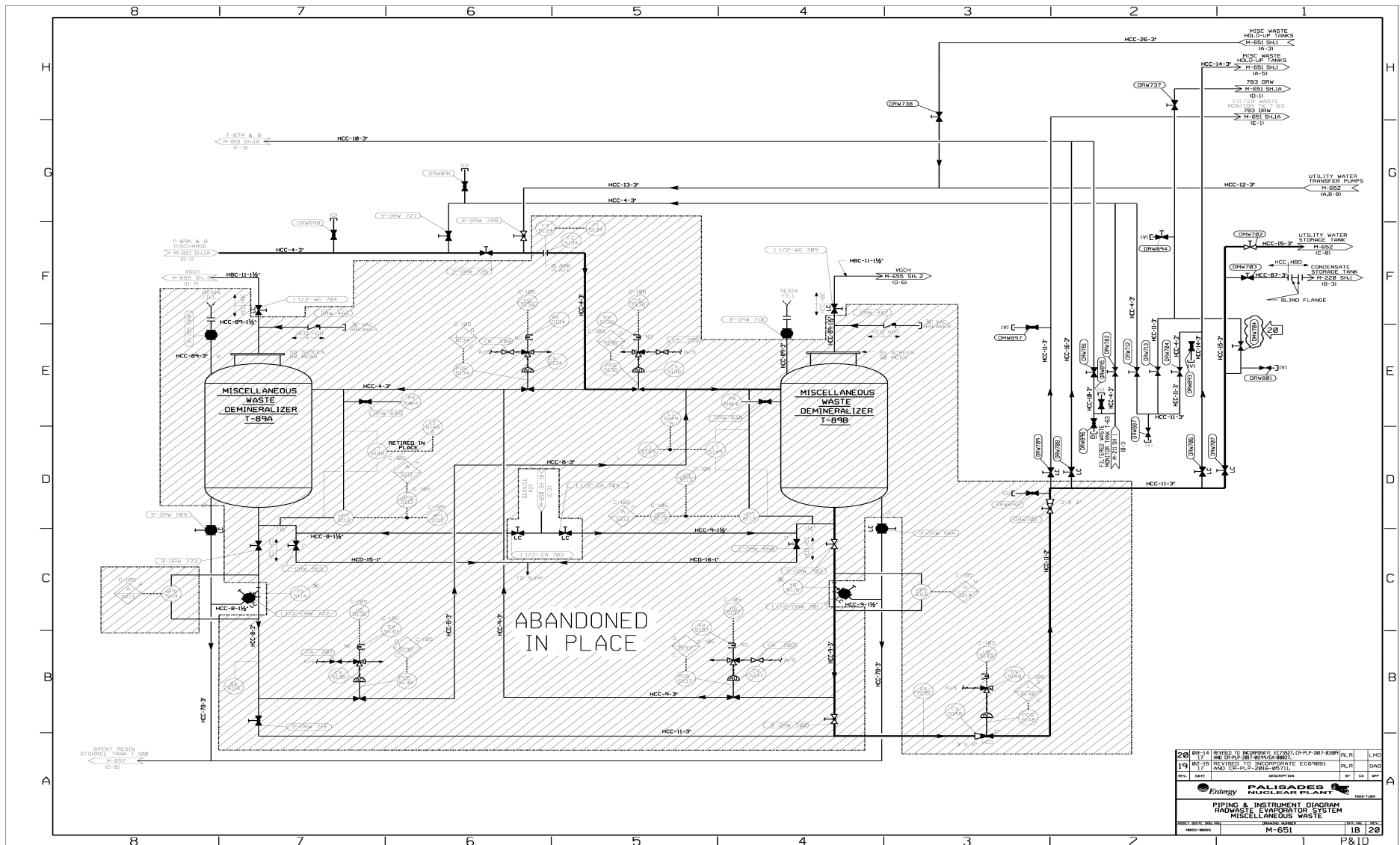
**PIPING AND INSTRUMENT DIAGRAM**  
**RADWASTE EVAPORATOR SYSTEM MICELLANEOUS WASTE**



**Legend:**

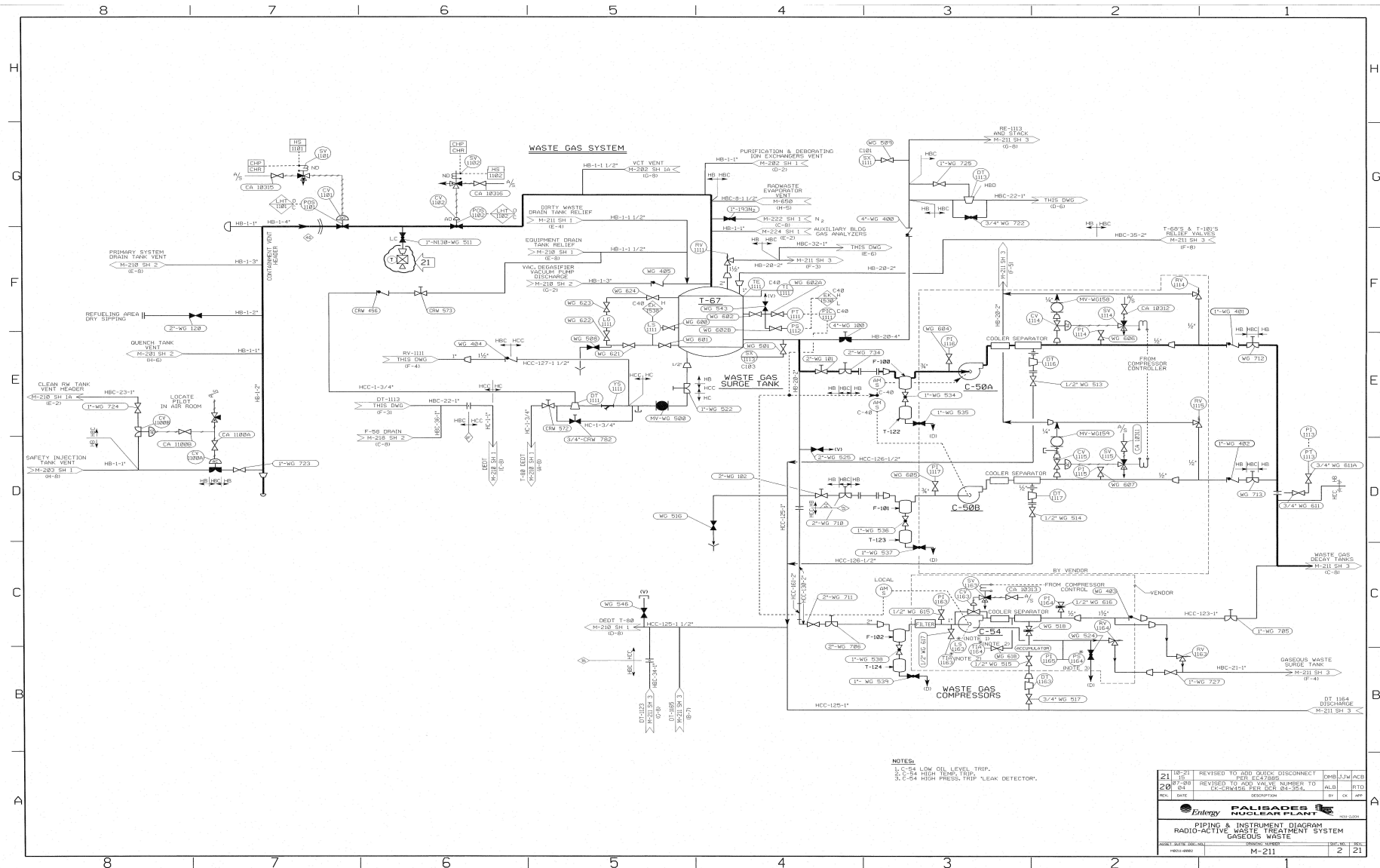
- T-95 EVAPORATOR CONCENTRATE TANK (DIRTY)
- T-87 MISCELLANEOUS WASTE DISTILLATE TANK
- P-95B DE-POWERED EVAPORATOR CONCENTRATE TRANSFER PUMP
- P-89A, P-89B MISCELLANEOUS WASTE DISTILLATE PUMPS
- ET, EX, XX, etc. Instrumentation points
- 3" DRW 750, etc. Pipe specifications
- 3/4" x 1/2" Valve specifications
- 1" x 1/2" Valve specifications
- 1" x 1/4" Valve specifications
- 1" x 1/8" Valve specifications
- 1" x 1/16" Valve specifications
- 1" x 1/32" Valve specifications
- 1" x 1/64" Valve specifications
- 1" x 1/128" Valve specifications
- 1" x 1/256" Valve specifications
- 1" x 1/512" Valve specifications
- 1" x 1/1024" Valve specifications
- 1" x 1/2048" Valve specifications
- 1" x 1/4096" Valve specifications
- 1" x 1/8192" Valve specifications
- 1" x 1/16384" Valve specifications
- 1" x 1/32768" Valve specifications
- 1" x 1/65536" Valve specifications
- 1" x 1/131072" Valve specifications
- 1" x 1/262144" Valve specifications
- 1" x 1/524288" Valve specifications
- 1" x 1/1048576" Valve specifications
- 1" x 1/2097152" Valve specifications
- 1" x 1/4194304" Valve specifications
- 1" x 1/8388608" Valve specifications
- 1" x 1/16777216" Valve specifications
- 1" x 1/33554432" Valve specifications
- 1" x 1/67108864" Valve specifications
- 1" x 1/134217728" Valve specifications
- 1" x 1/268435456" Valve specifications
- 1" x 1/536870912" Valve specifications
- 1" x 1/1073741824" Valve specifications
- 1" x 1/2147483648" Valve specifications
- 1" x 1/4294967296" Valve specifications
- 1" x 1/8589934592" Valve specifications
- 1" x 1/17179869184" Valve specifications
- 1" x 1/34359738368" Valve specifications
- 1" x 1/68719476736" Valve specifications
- 1" x 1/137438953472" Valve specifications
- 1" x 1/274877906944" Valve specifications
- 1" x 1/549755813888" Valve specifications
- 1" x 1/1099511627776" Valve specifications
- 1" x 1/2199023255552" Valve specifications
- 1" x 1/4398046511104" Valve specifications
- 1" x 1/8796093022208" Valve specifications
- 1" x 1/17592186044416" Valve specifications
- 1" x 1/35184372088832" Valve specifications
- 1" x 1/70368744177664" Valve specifications
- 1" x 1/140737488355328" Valve specifications
- 1" x 1/281474976710656" Valve specifications
- 1" x 1/562949953421312" Valve specifications
- 1" x 1/1125899906842624" Valve specifications
- 1" x 1/2251799813685248" Valve specifications
- 1" x 1/4503599627370496" Valve specifications
- 1" x 1/9007199254740992" Valve specifications
- 1" x 1/18014398509481984" Valve specifications
- 1" x 1/36028797018963968" Valve specifications
- 1" x 1/72057594037927936" Valve specifications
- 1" x 1/144115188075855872" Valve specifications
- 1" x 1/288230376151711744" Valve specifications
- 1" x 1/576460752303423488" Valve specifications
- 1" x 1/1152921504606846976" Valve specifications
- 1" x 1/2305843009213693952" Valve specifications
- 1" x 1/4611686018427387904" Valve specifications
- 1" x 1/9223372036854775808" Valve specifications
- 1" x 1/18446744073709551616" Valve specifications
- 1" x 1/36893488147419103232" Valve specifications
- 1" x 1/73786976294838206464" Valve specifications
- 1" x 1/147573952589676412928" Valve specifications
- 1" x 1/295147905179352825856" Valve specifications
- 1" x 1/590295810358705651712" Valve specifications
- 1" x 1/1180591620717411303424" Valve specifications
- 1" x 1/2361183241434822606848" Valve specifications
- 1" x 1/4722366482869645213696" Valve specifications
- 1" x 1/9444732965739290427392" Valve specifications
- 1" x 1/18889465931478580854784" Valve specifications
- 1" x 1/37778931862957161709568" Valve specifications
- 1" x 1/75557863725914323419136" Valve specifications
- 1" x 1/151115727451828646838272" Valve specifications
- 1" x 1/302231454903657293676544" Valve specifications
- 1" x 1/604462909807314587353088" Valve specifications
- 1" x 1/1208925819614629174706176" Valve specifications
- 1" x 1/2417851639229258349412352" Valve specifications
- 1" x 1/4835703278458516698824704" Valve specifications
- 1" x 1/9671406556917033397649408" Valve specifications
- 1" x 1/19342813113834066795298816" Valve specifications
- 1" x 1/38685626227668133590597632" Valve specifications
- 1" x 1/77371252455336267181195264" Valve specifications
- 1" x 1/154742504910672534362390528" Valve specifications
- 1" x 1/309485009821345068724781056" Valve specifications
- 1" x 1/618970019642690137449562112" Valve specifications
- 1" x 1/1237940039285380274899124224" Valve specifications
- 1" x 1/2475880078570760549798248448" Valve specifications
- 1" x 1/4951760157141521099596496896" Valve specifications
- 1" x 1/9903520314283042199192993792" Valve specifications
- 1" x 1/19807040628566084398385987584" Valve specifications
- 1" x 1/39614081257132168796771975168" Valve specifications
- 1" x 1/79228162514264337593543950336" Valve specifications
- 1" x 1/158456325028528675187087900672" Valve specifications
- 1" x 1/316912650057057350374175801344" Valve specifications
- 1" x 1/633825300114114700748351602688" Valve specifications
- 1" x 1/1267650600228229401496703205376" Valve specifications
- 1" x 1/2535301200456458802993406410752" Valve specifications
- 1" x 1/5070602400912917605986812821504" Valve specifications
- 1" x 1/10141204801825835211973625643008" Valve specifications
- 1" x 1/20282409603651670423947251286016" Valve specifications
- 1" x 1/40564819207303340847894502572032" Valve specifications
- 1" x 1/81129638414606681695789005144064" Valve specifications
- 1" x 1/162259276829213363391780010288128" Valve specifications
- 1" x 1/324518553658426726783560020576256" Valve specifications
- 1" x 1/649037107316853453567120041152512" Valve specifications
- 1" x 1/1298074214633706907134240822300224" Valve specifications
- 1" x 1/2596148429267413814268481644600448" Valve specifications
- 1" x 1/5192296858534827628536963289200896" Valve specifications
- 1" x 1/1038459371706965525707392657841792"

PIPING AND INSTRUMENT DIAGRAM  
RADWASTE EVAPORATOR SYSTEM MICELLANEOUS WASTE





PIPING AND INSTRUMENT DIAGRAM  
RADIOACTIVE WASTE TREATMENT SYSTEM GASEOUS WASTE



**WASTE GAS SYSTEM**

**NOTES:**

- 1-TANK T-68A & C HAVE ALL INDOORS 2-INCH PIPING WITH COATING.
- 2-CONNECTIONS SHOWN ON T-101C ARE TYPICAL FOR T-68A & B.
- 3-TWO INCH LINE BEING USED BY A TR INCORPORATED INTO SSP-58A, REL. SWITCHING WILL BE EFFECTED BY PROVIDES FOR NITROGEN PURGE OR DILUTION OF THE WOODS.

REV.	DATE	DESCRIPTION	BY	CHK	APP
23	12-18-82	REVISED TO ADD 1.5 IN. DIA. PIPING FOR T-68A & C	WJ	JH	WJ
22	12-18-82	REVISED TO ADD 1.5 IN. DIA. PIPING FOR T-68A & C	WJ	JH	WJ

**Palisades Energy**

**PITTING & INSTRUMENT DIAGRAM**

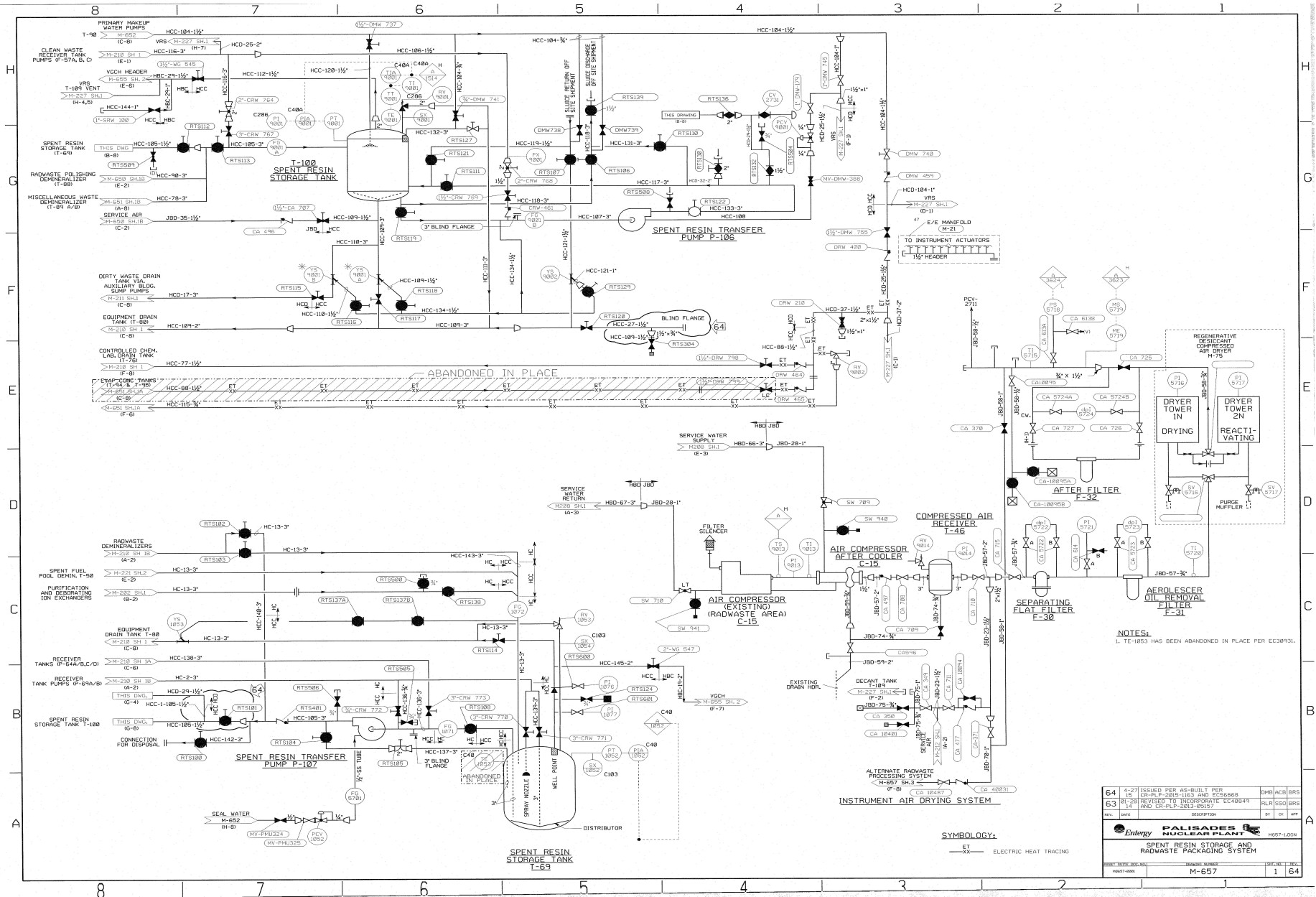
**RADIO-ACTIVE WASTE TREATMENT SYSTEM**

**GASEOUS WASTE**

M-211

3 23

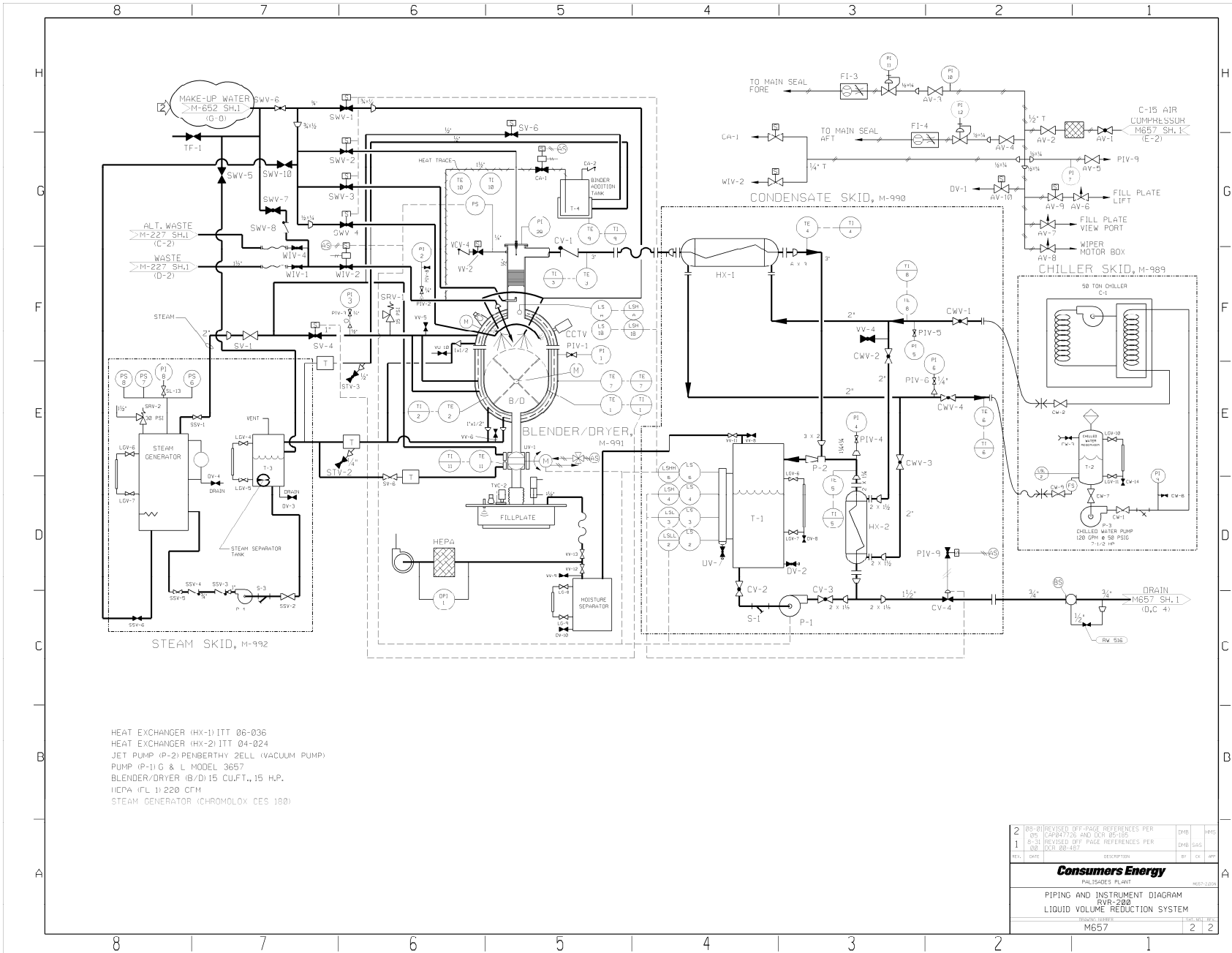
SPENT RESIN STORAGE AND RADWASTE PACKAGING SYSTEM



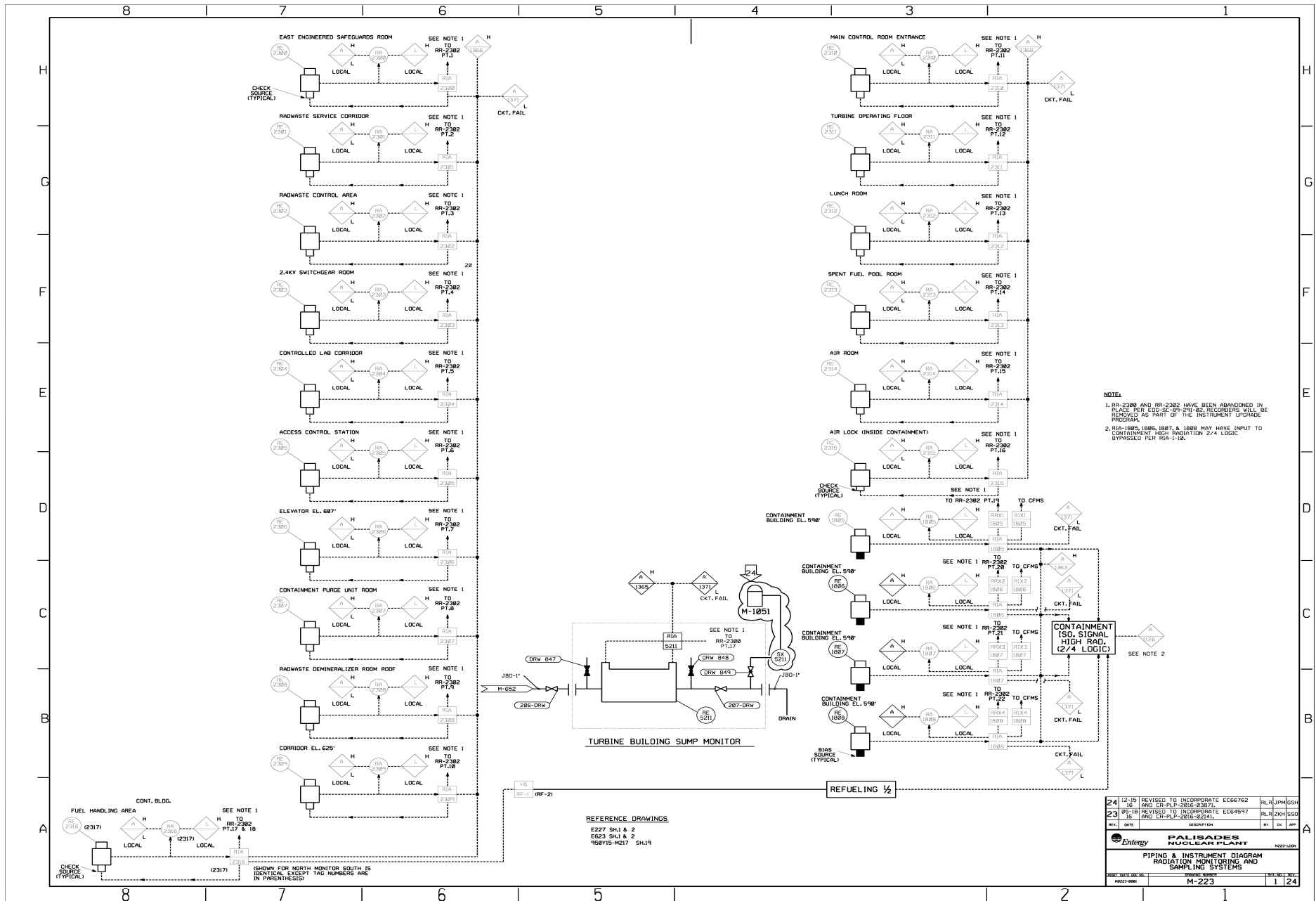
- NOTES:
- 1. THREE-POSITION VALVE, EACH POSITION INDICATED ON PANEL.
  - 2. FEED SYSTEMS SHOWN IN NORMAL OPERATING MODE. HOWEVER, ONLY ONE WASTE FEED SYSTEM IS OPERATING AT ANY ONE TIME.
  - 3. \* - INDICATES RACK MOUNTED DEVICE.
  - 4. MULTI-PEN RECORDER FR-2723/2748
  - 5. \*\* - INDICATES HEAT TRACING PANEL MOUNTED DEVICE
  - 6. SOLENOID VALVES ARE SHOWN IN DEENERGIZED POSITION. ~~NE-O~~ SLENOID IS NORMALLY ENERGIZED DURING PLANT OPERATION
  - 7. HANDHELD REMOVED, PACKING TIGHTENED TO PREVENT COMPLESS LEAKS TO BEAD
  - 8. FAILED CLOSED - CAUSTIC STOPPED TO BEAD
  - 9. RETURNED VES.
  - 10. AIR SUPPLY DISCONNECTED AND PLUGGED AT SV-2731, CV-2731 FAILED CLOSED, SEE VALVE TAG.

[illegible]

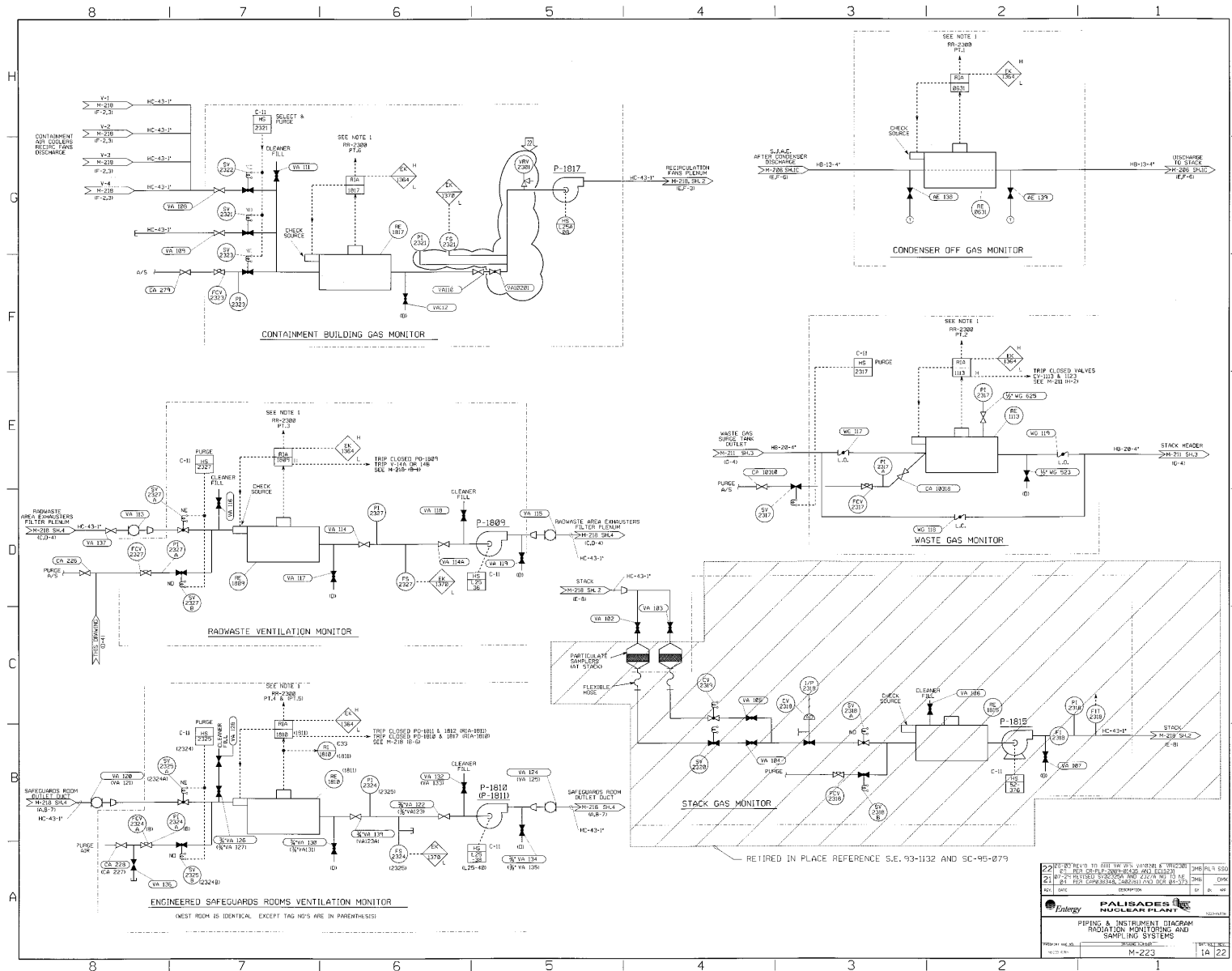
PIPING AND INSTRUMENT DIAGRAM  
 LIQUID VOLUME REDUCTION SYSTEM

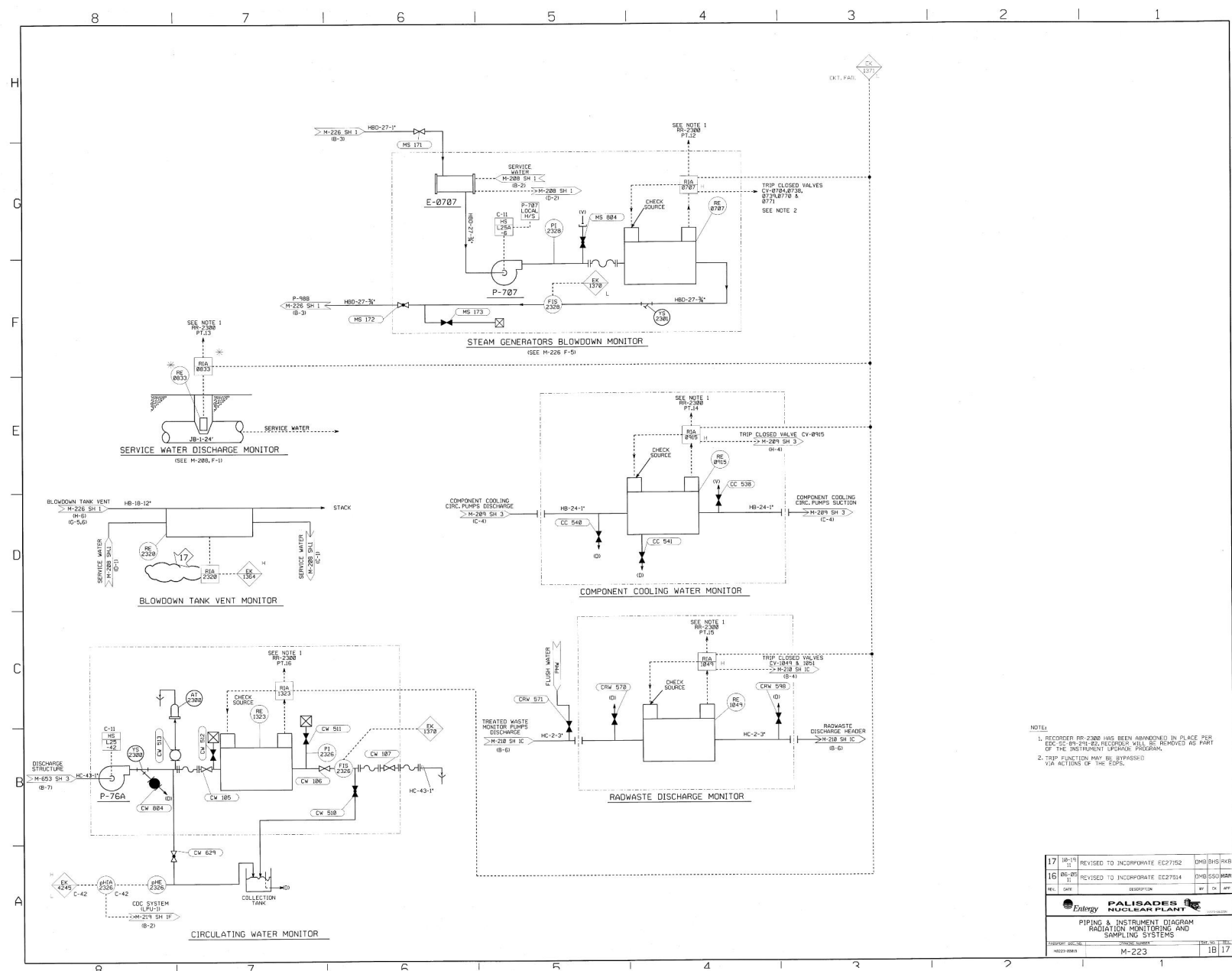


PIPING AND INSTRUMENT DIAGRAM  
RADIATION MONITORING AND SAMPLING SYSTEMS



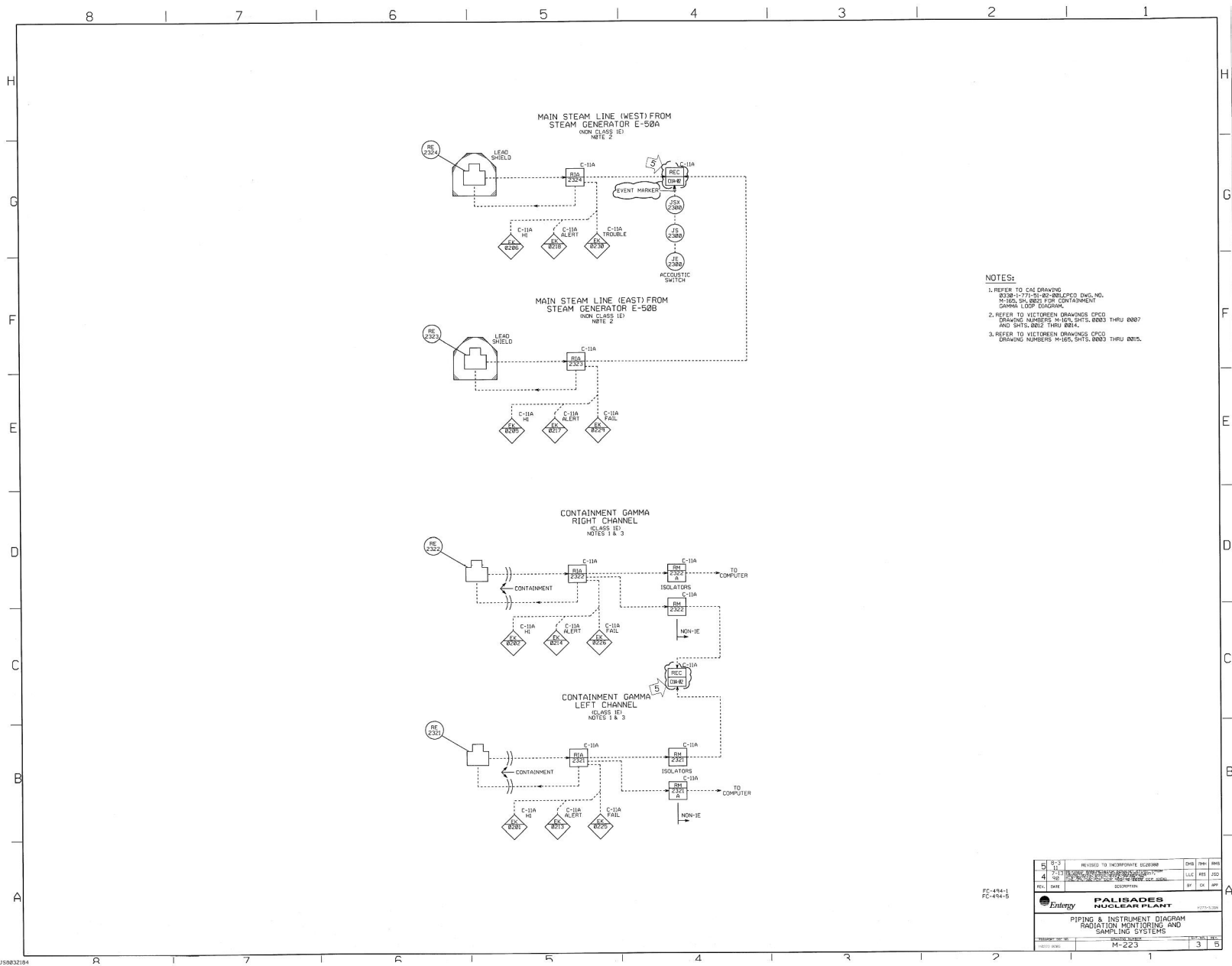
PIPING AND INSTRUMENT DIAGRAM  
RADIATION MONITORING AND SAMPLING SYSTEMS



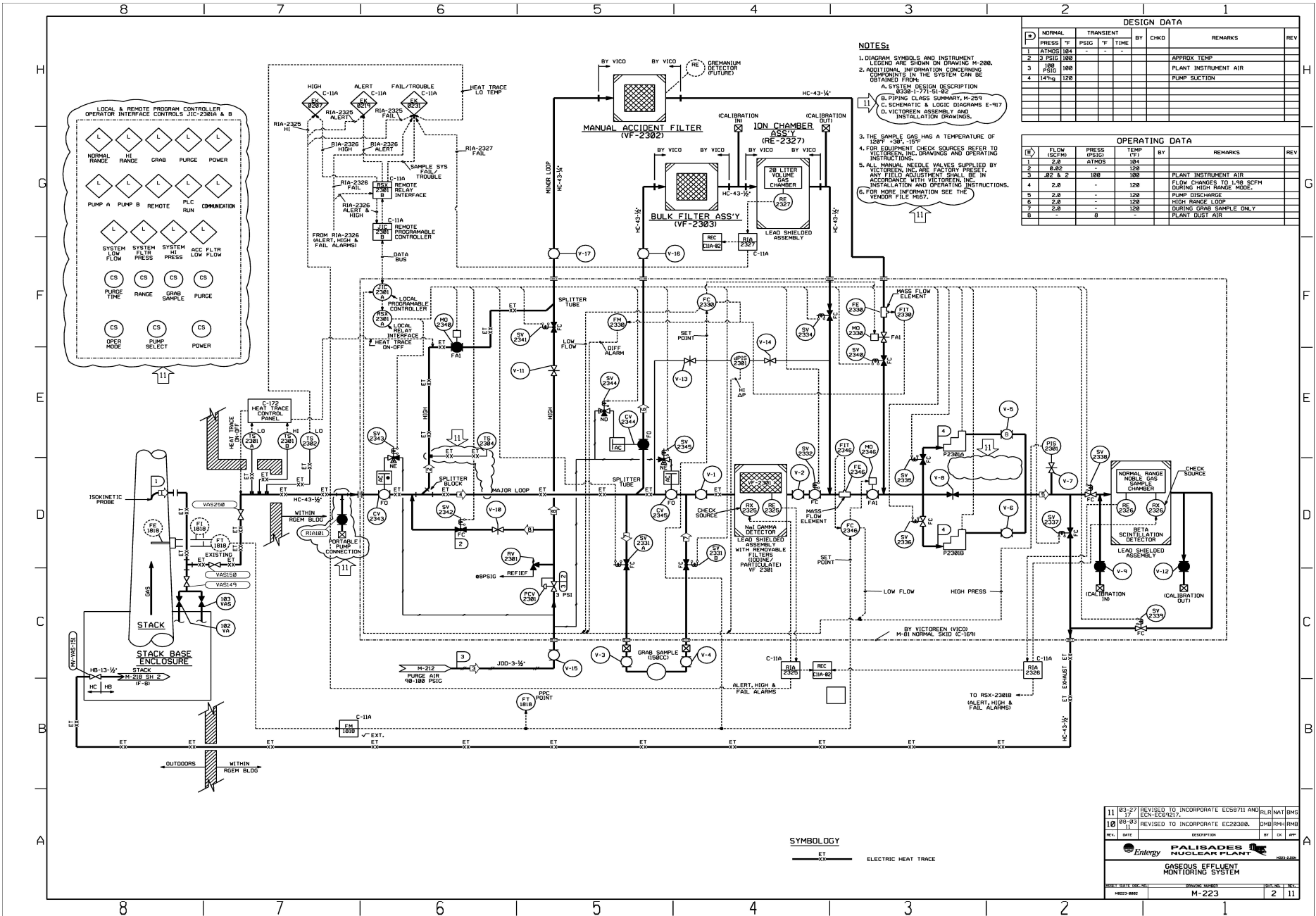




**PIPING AND INSTRUMENT DIAGRAM**  
**RADIATION MONITORING AND SAMPLING SYSTEMS**



GASEOUS EFFLUENT MONITORING SYSTEM



---

**ARCHITECTURAL ACCESS CONTROL AND RADIATION ZONING  
(PLANT IN OPERATION)**

Portions of this page have been  
redacted per 10 CFR 2.390(d)(1).

---

**ARCHITECTURAL ACCESS CONTROL AND RADIATION ZONING  
(PLANT IN OPERATION)**

Portions of this page have been  
redacted per 10 CFR 2.390(d)(1).

---

**ARCHITECTURAL ACCESS CONTROL AND RADIATION ZONING  
(PLANT IN OPERATION)**

Portions of this page have been  
redacted per 10 CFR 2.390(d)(1).