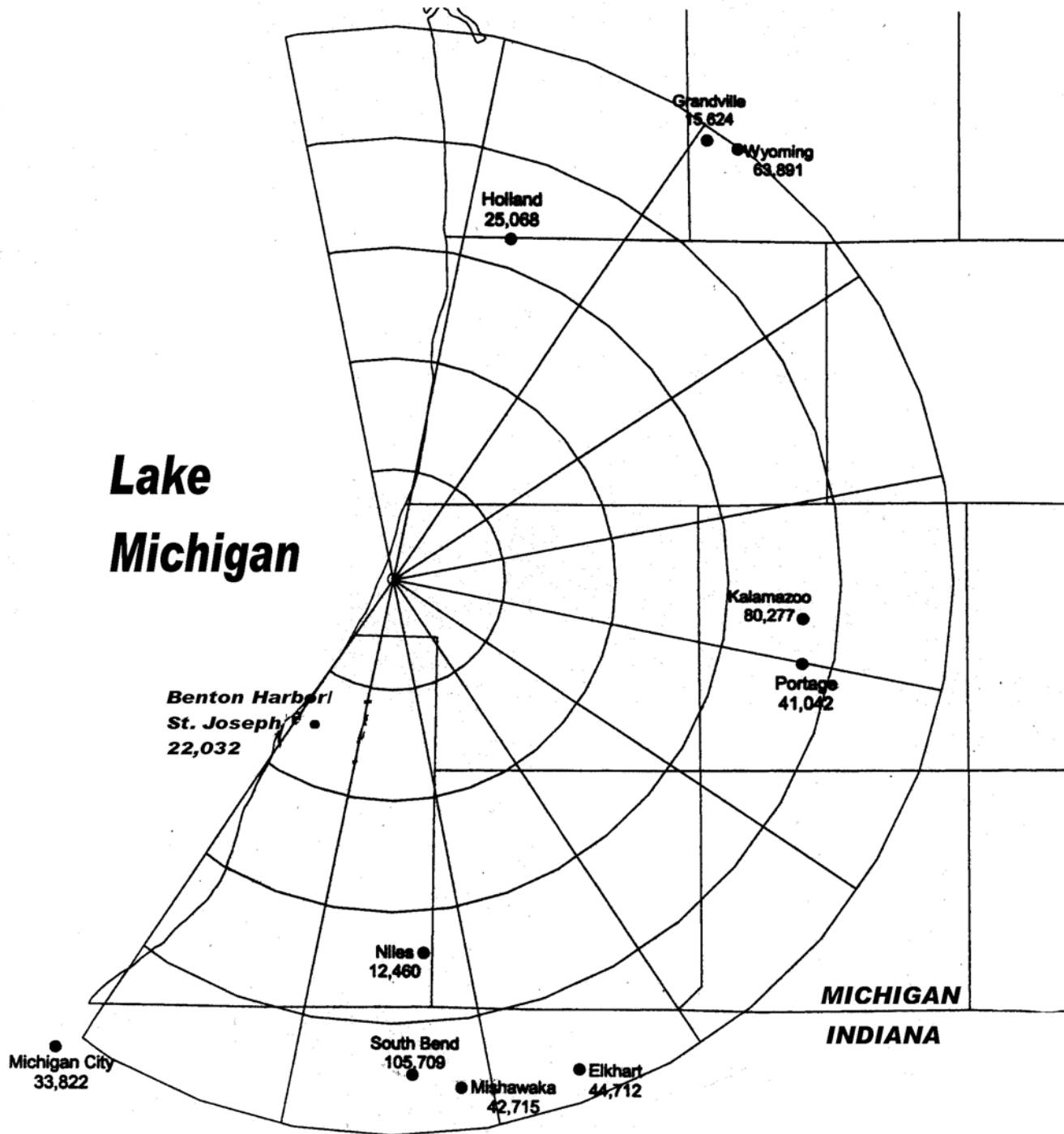


**POPULATION CENTERS
1990 CENSUS OVER 10,000, 0 TO 50 MILES**

NOTE: Population values reported for incorporated cities or villages only.



LEGEND

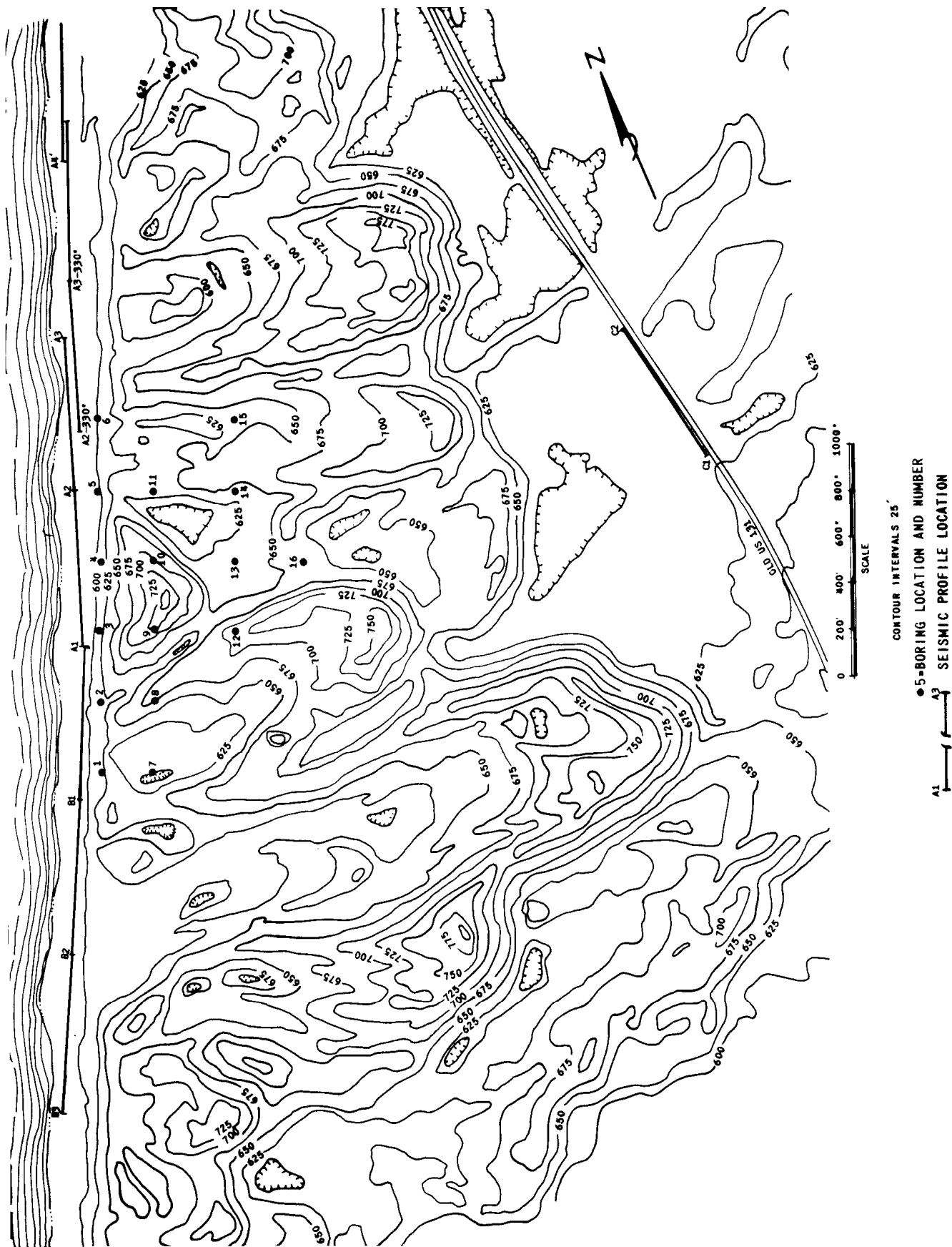
1. SITE PROPERTY BOUNDARY & EXCLUSION AREA
2. POWER BLOCK PLANT
3. CIRCULATING WATER COOLING TOWERS
4. SECURITY OWNER CONTROLLED AREA (SOCA)
5. TURBINE FACILITY
6. 1000 FOOT INTAKE PIPE TO CRIB
7. DISCHARGE STRUCTURE
8. BACKFILL AND DETECTION FENCES
9. SOCA FUEL STORAGE (DIESEL) AREA
10. DCS FABRICATION BLDG.

NOTE:
SWITCHYARD AND TRANSMISSION CORRIDOR CASEMENTS HAVE BEEN GRANTED TO THE TRANSMISSION SYSTEM OWNER.

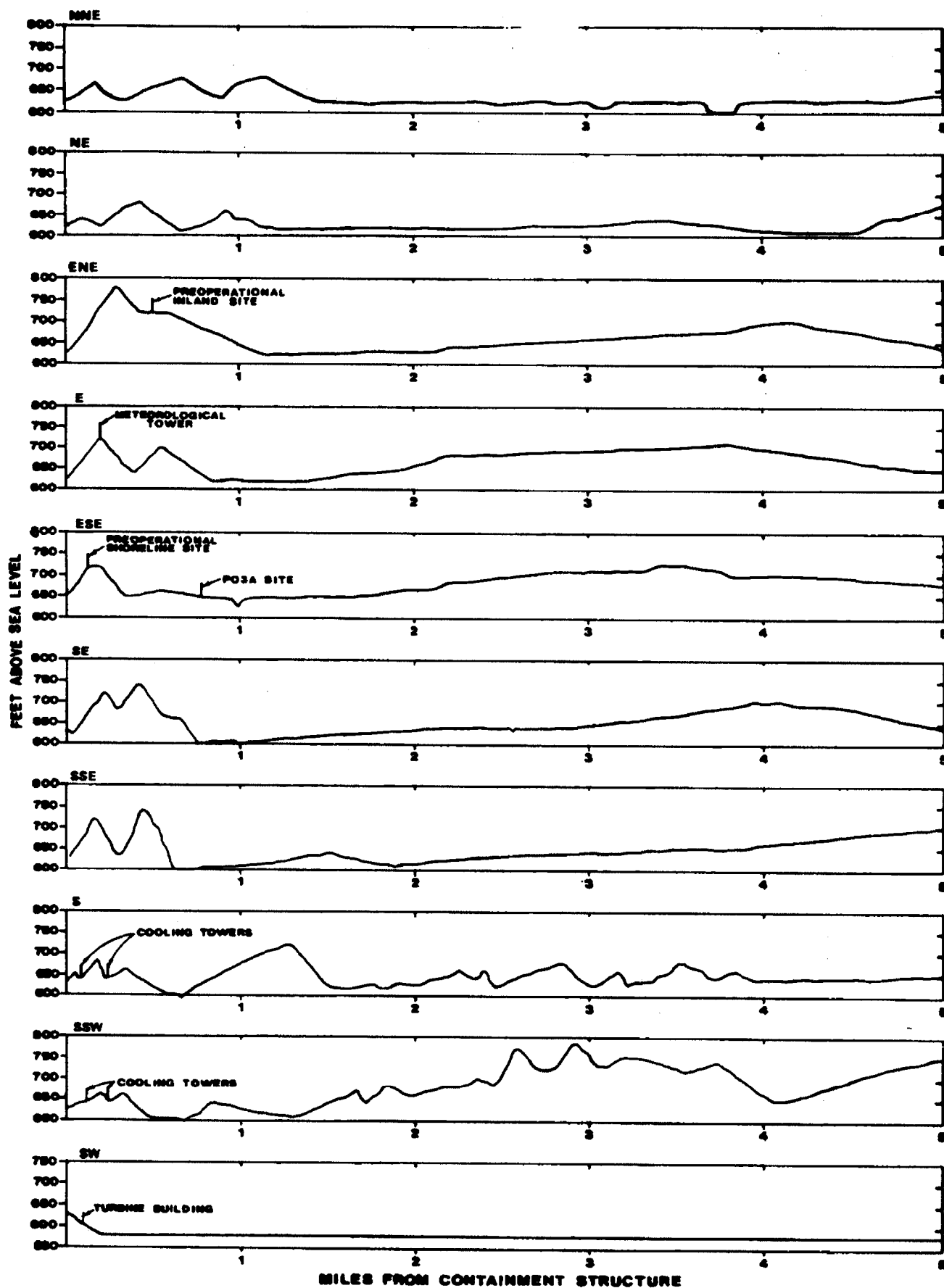
Labels on Map:

- MICHIGAN
- Lake Superior Hwy.
- To Segreto
- TO ARGENTIA
- TO NERGENNES
- ROOSEVELT
- CONVERT
- SWITCH YARD
- ACCESS ROAD
- BOUNDARY POINT TO CONTAINMENT
- 577 METERS DIE-ARREST
- INTAKE
- DISCHARGE
- OLD RAY STATION
- VENTILATOR
- STORAGE BLDG.
- UNIT MOUNTING BUILDING
- LAKE

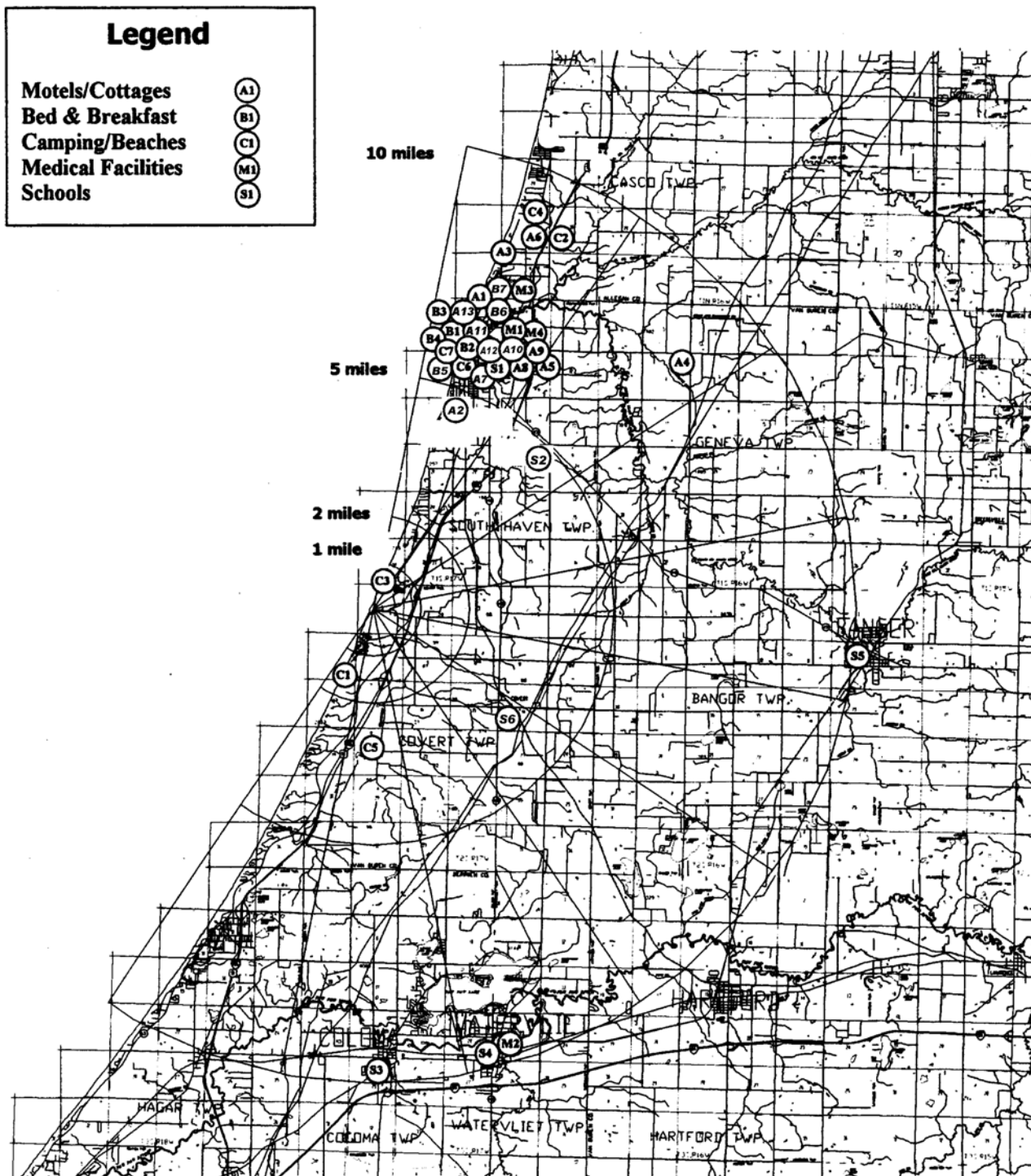
SITE TOPOGRAPHY, BORING LOCATIONS,
AND SEISMIC PROFILES



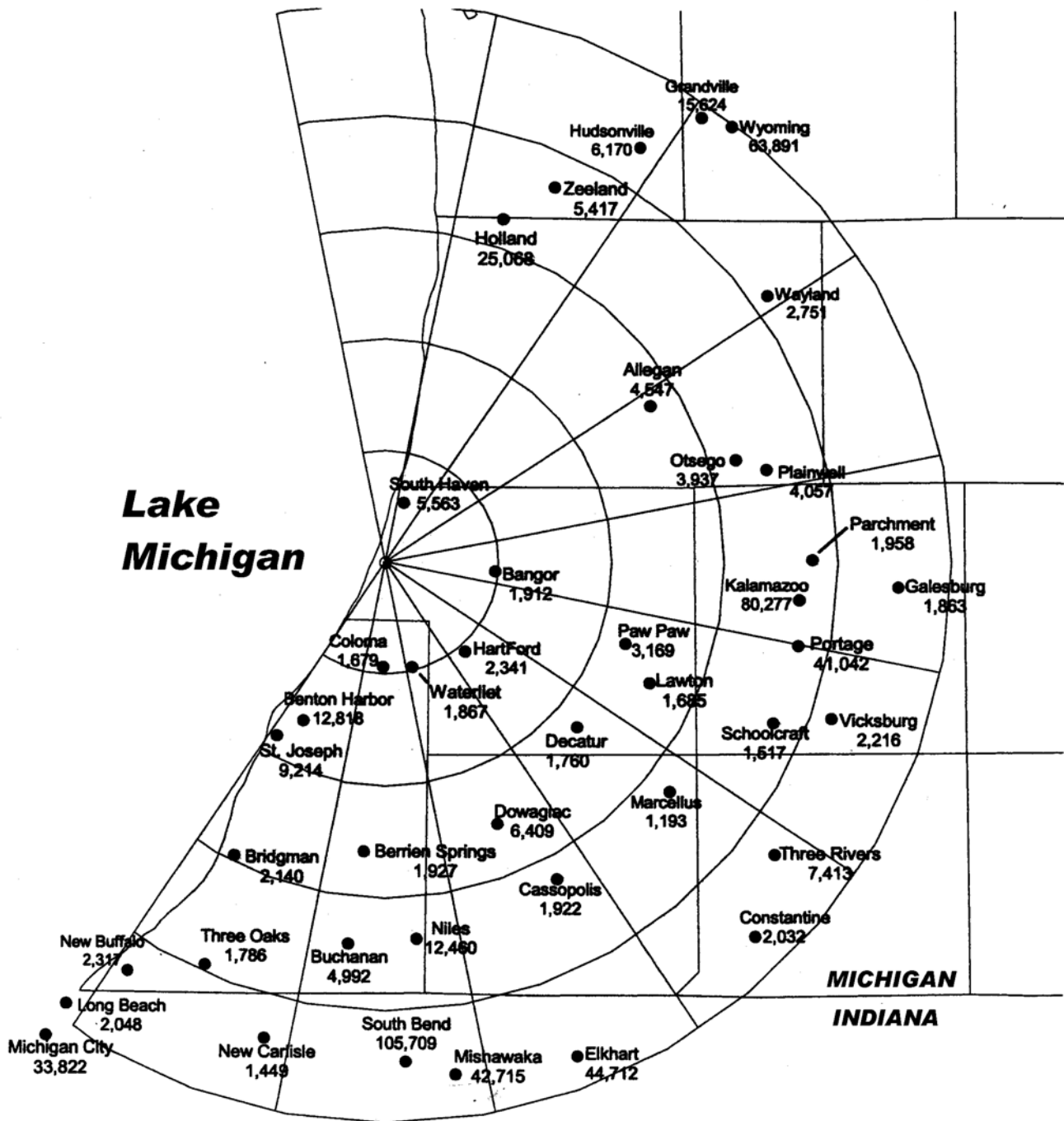
TOPOGRAPHY CROSS SECTIONS



SELECTED LAND USE CATEGORIES

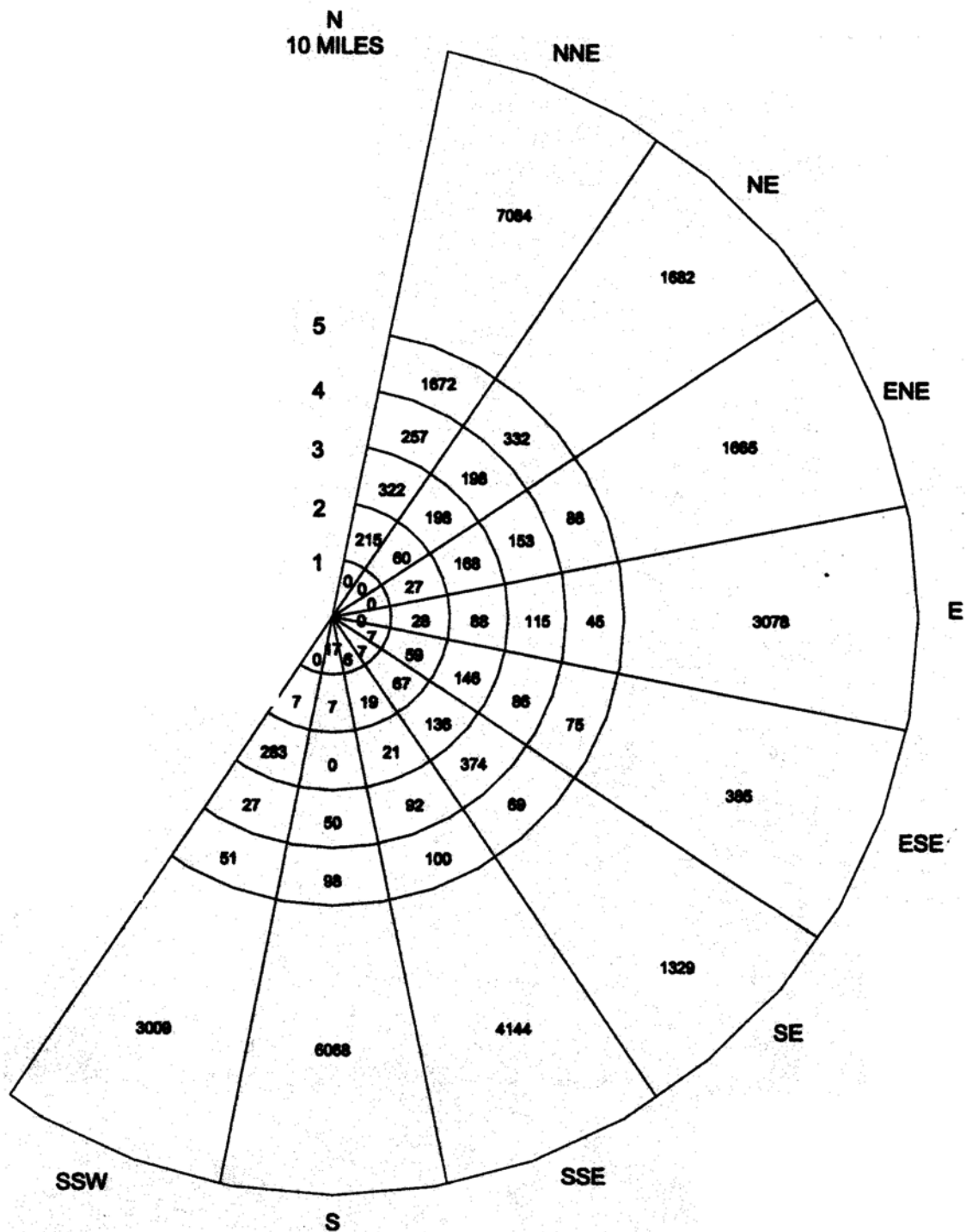


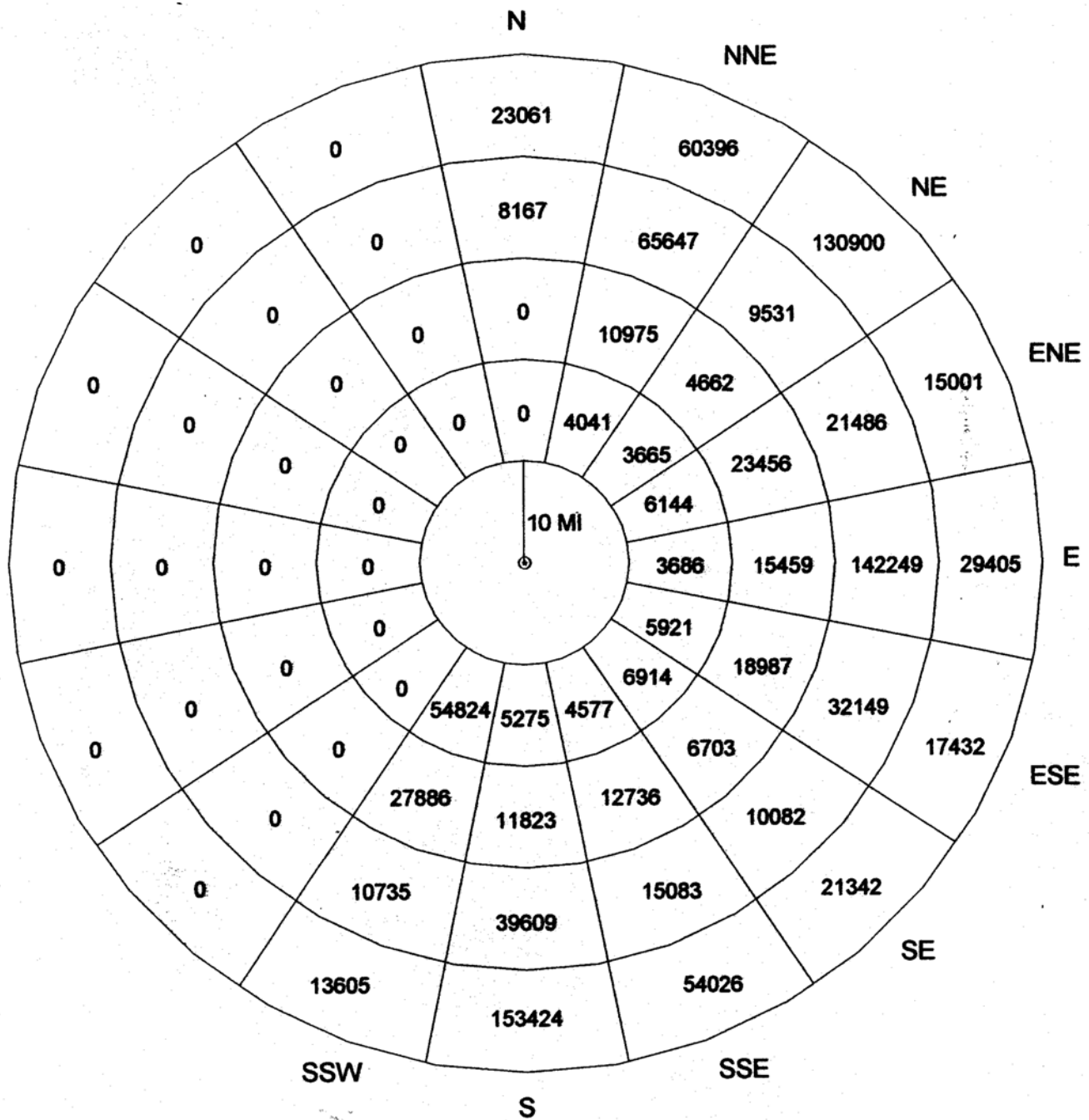
NOTE: Population values reported for incorporated cities or villages only.



PERMANENT RESIDENTIAL POPULATION BREAKDOWN (1990)

NOTE: Lake Michigan occupies part or all of cardinal compass points. SSW through N.



POPULATION DISTRIBUTION (1990)
10 TO 50 MILES

GROUNDWATER ELEVATIONS
AND AREA GRADIENTS

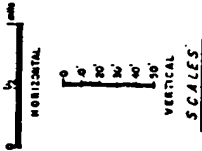
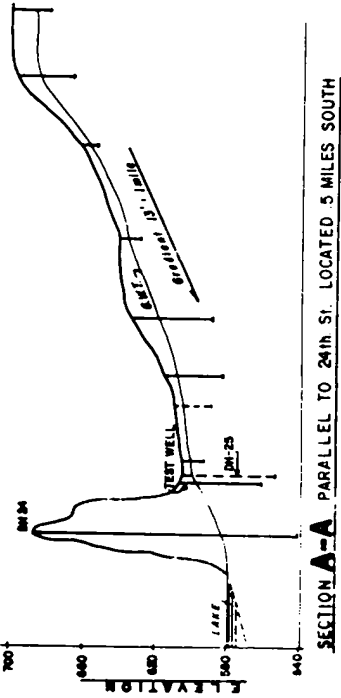
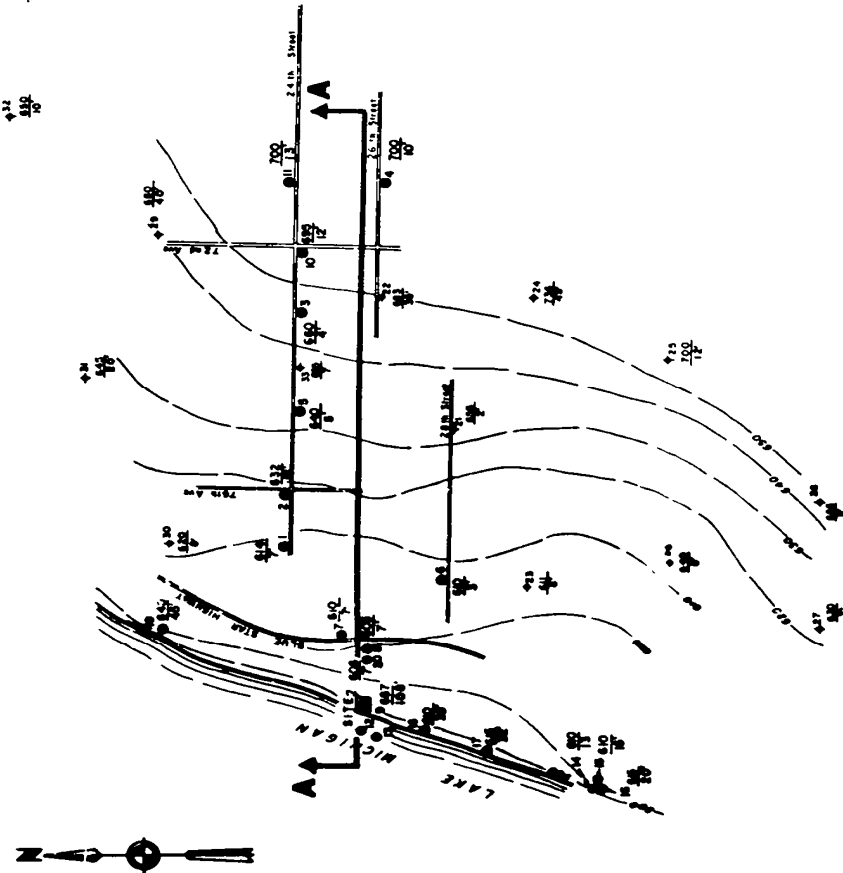
WATER
SAMPLE LOCATION
AND NUMBER

EXPLANATION

510 - ELEVATION OF WELL COLLAR
DEPTH TO WATER

512 - ELEVATION OF COLLAR
DEPTH TO WATER

500 - GROUND WATER CONTOUR



SECTION A-A

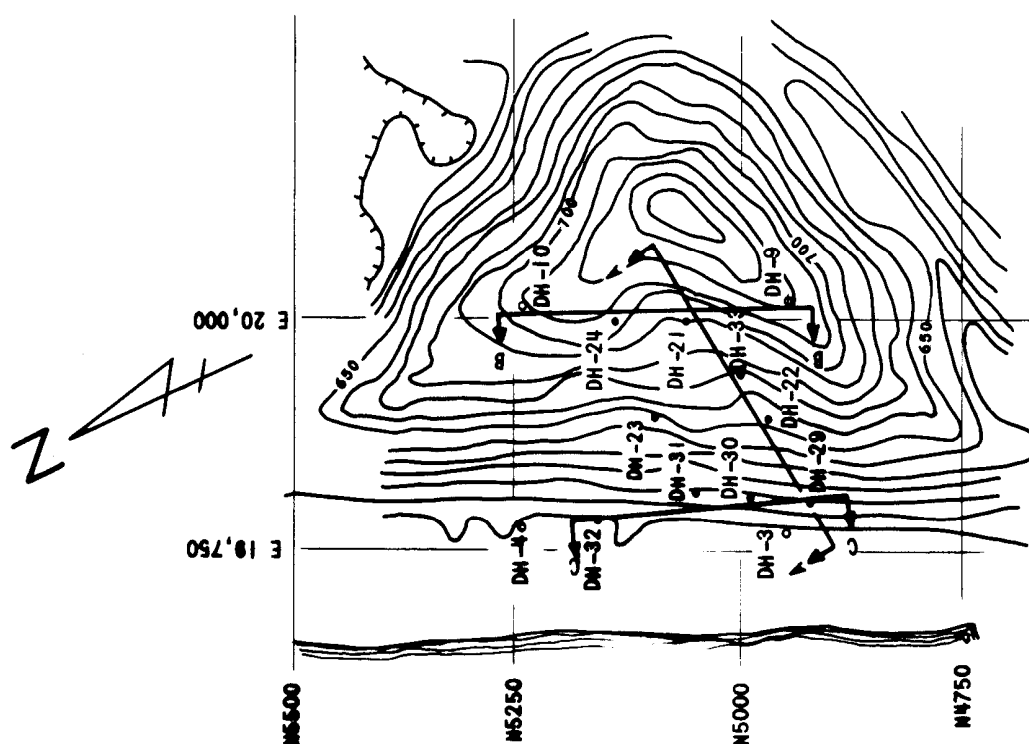
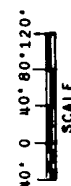
NOTES:
 Area showing approximate contours on bedrock.
 Datum is Mean Sea Level.

LEGEND:
 --- BEDROCK CONTOURS (FROM REFERENCE 4)
 --- BEDROCK CONTOURS (FROM REFERENCE 8)
 Qm - Terminal Moraine
 Qt - Ground Moraine
 Ql - Lake Deposits
 Qd - Dune Areas

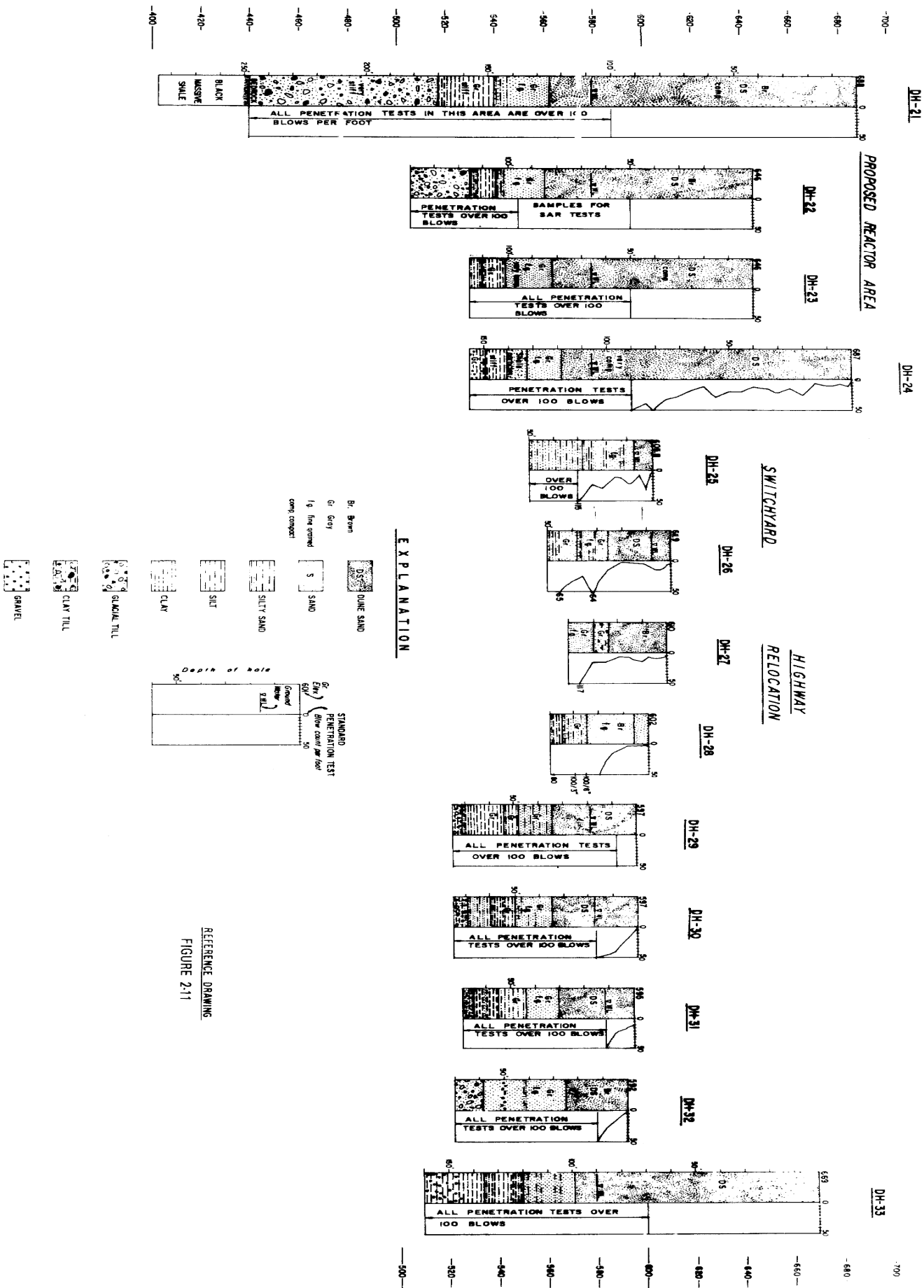
SCALE IN MILES: 0 1 2 3

ELEVATIONS IN FEET MSL: 200 300 400 500 600 700

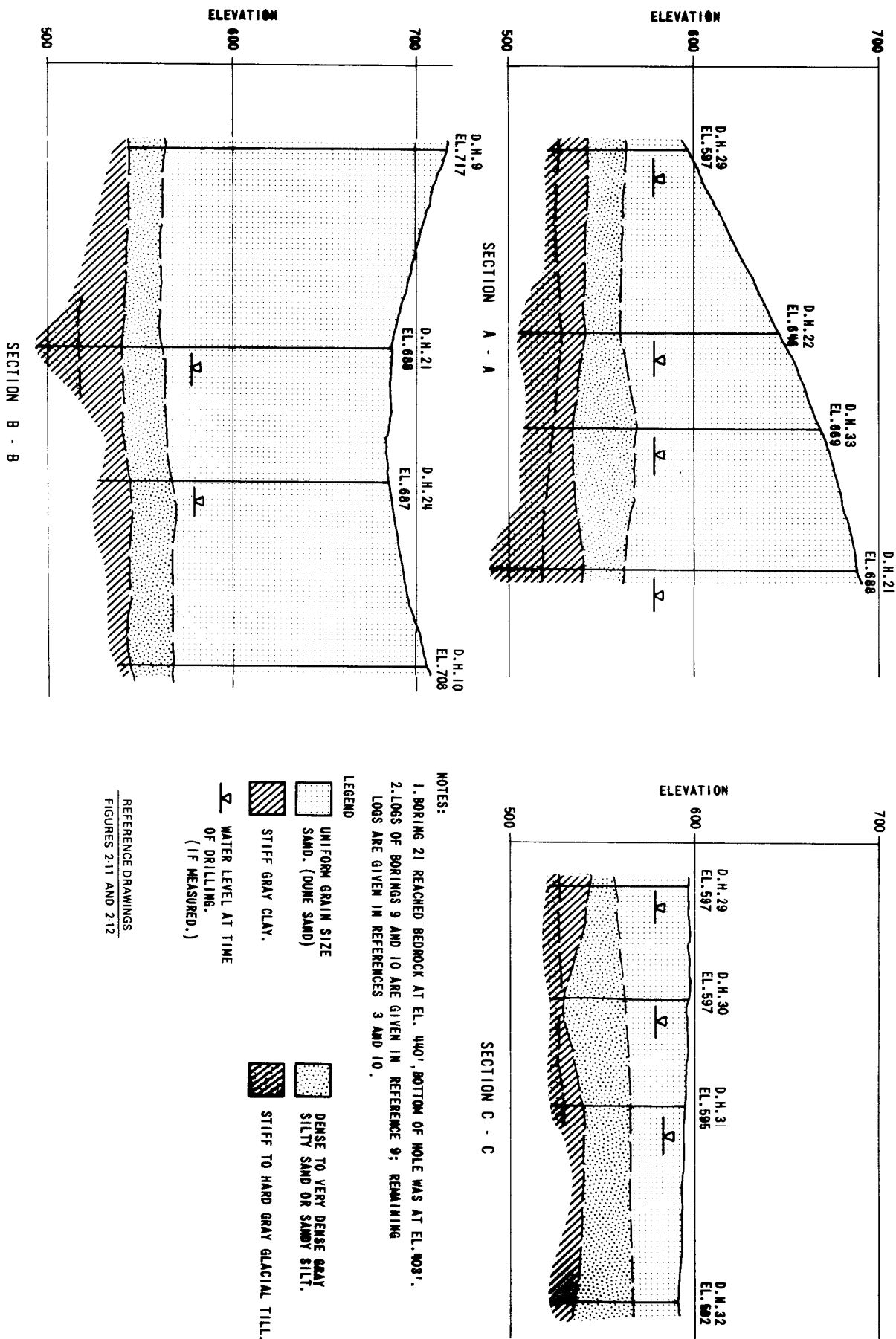
Labels on map: Lake Michigan, South Haven, Toquim, COVERT, A SITE, 18 in., 20 in., 24 in., 28 in., 32 in., 34 in., 36 in., 38 in., 40 in., 42 in., 44 in., 46 in., 48 in., 50 in., 52 in., 54 in., 56 in., 58 in., 60 in., 62 in., 64 in., 66 in., 68 in., 70 in., 72 in., 74 in., 76 in., 78 in., 80 in., 82 in., 84 in., 86 in., 88 in., 90 in., 92 in., 94 in., 96 in., 98 in., 100 in.



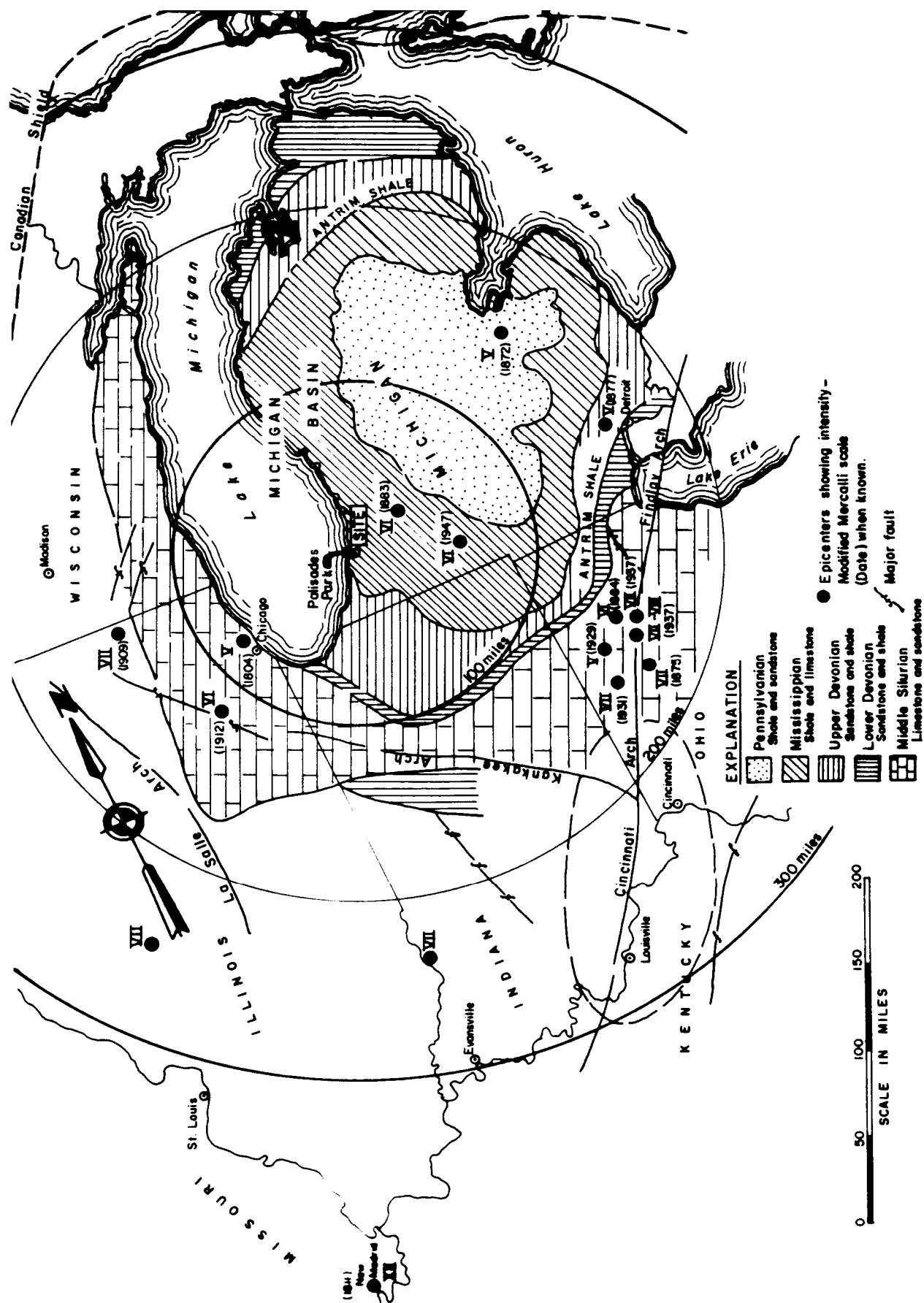
1966 DRILLING PROGRAM
DRILL LOGS AND SOIL PENETRATION TEST RESULTS



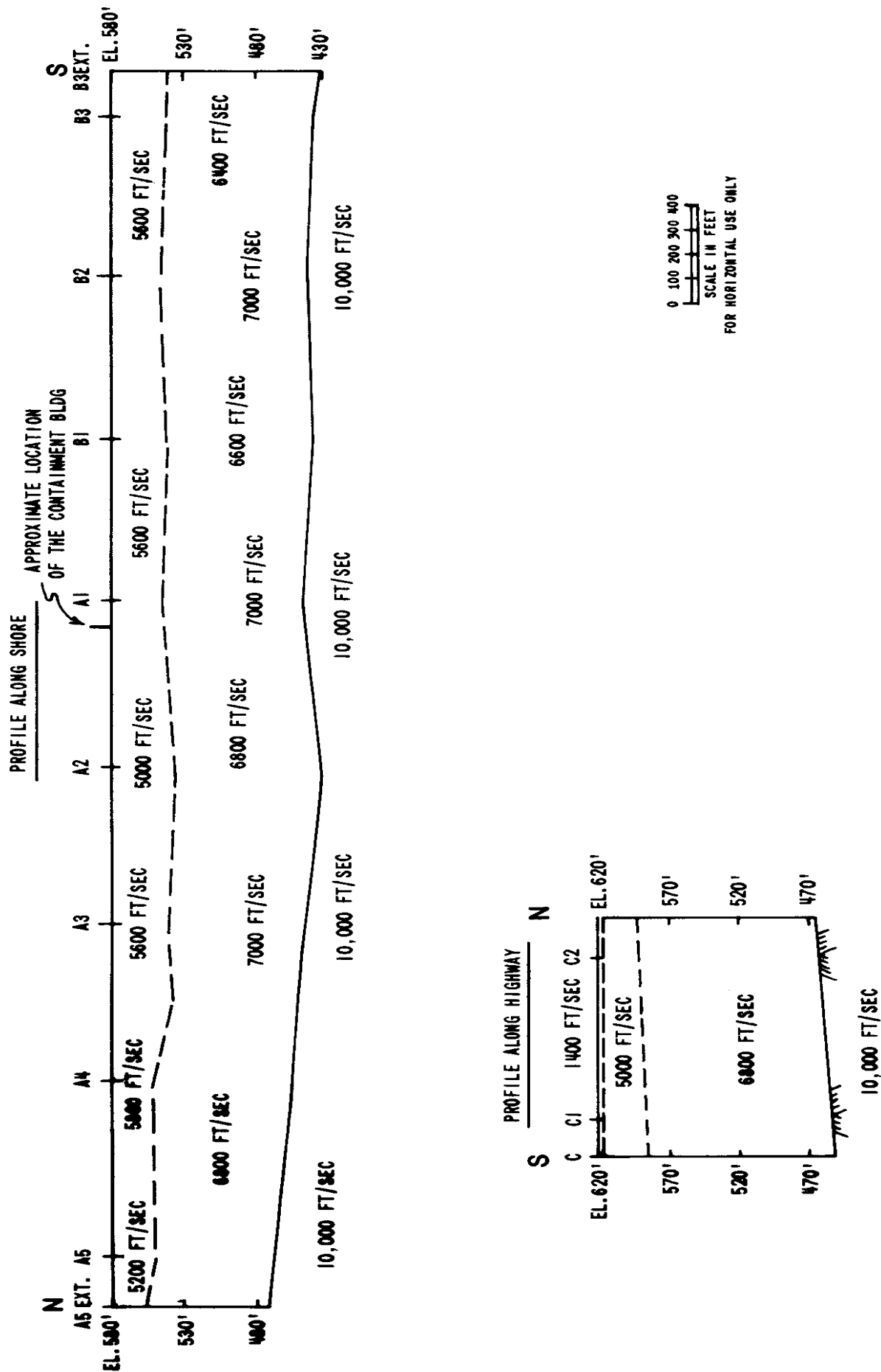
1966 DRILLING PROGRAM
SUBSURFACE SECTIONS



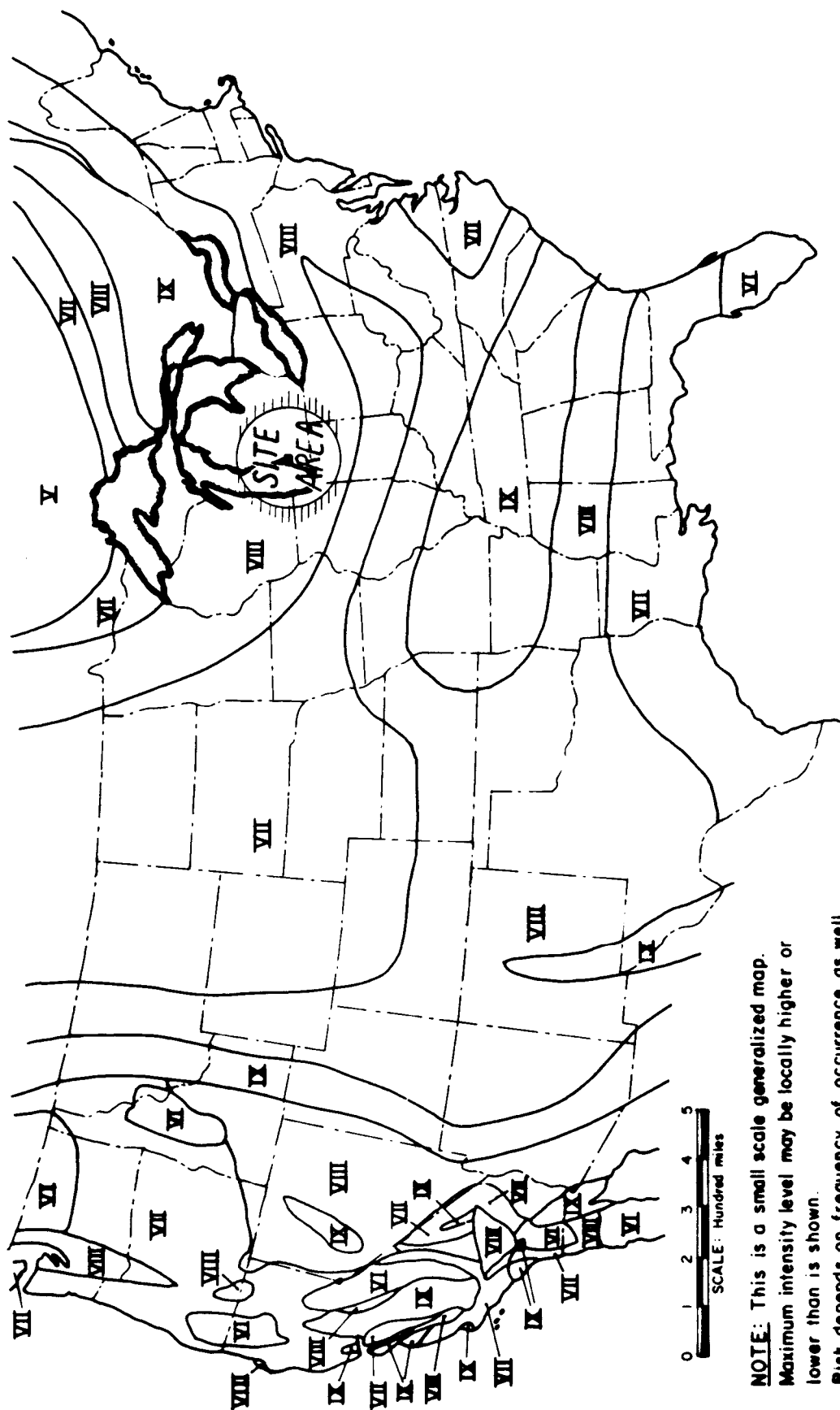
REGIONAL STRUCTURES, BEDROCK GEOLOGY,
MAJOR FAULTING AND EPICENTERS



COMPRESSIONAL (P)WAVE VELOCITIES
FROM SEISMIC SURVEY



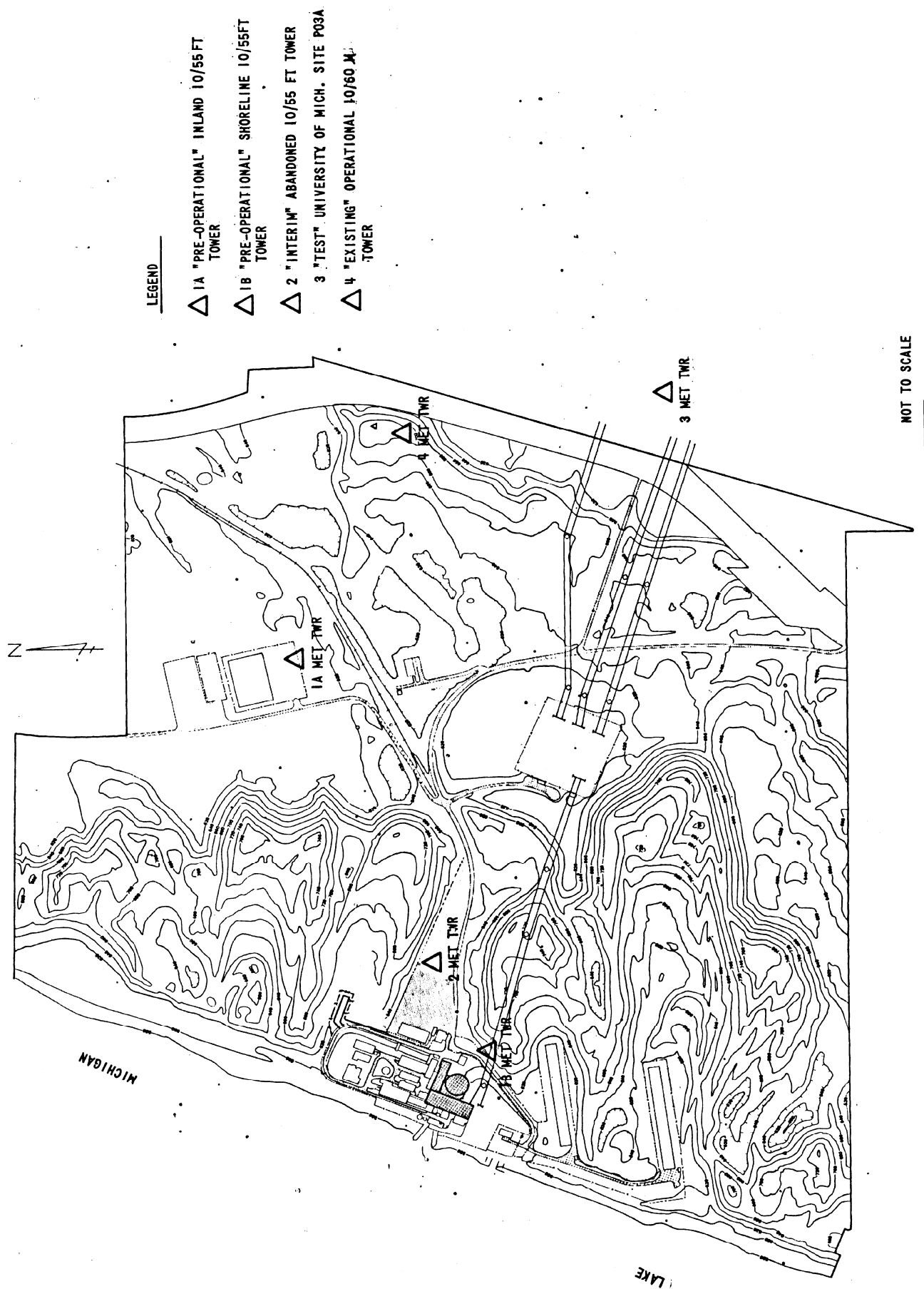
NOTE: DATA TAKEN FROM REFERENCE 8

SEISMIC REGIONALIZATION:
ZONES OF PROBABLE MAXIMUM INTENSITY (MM)

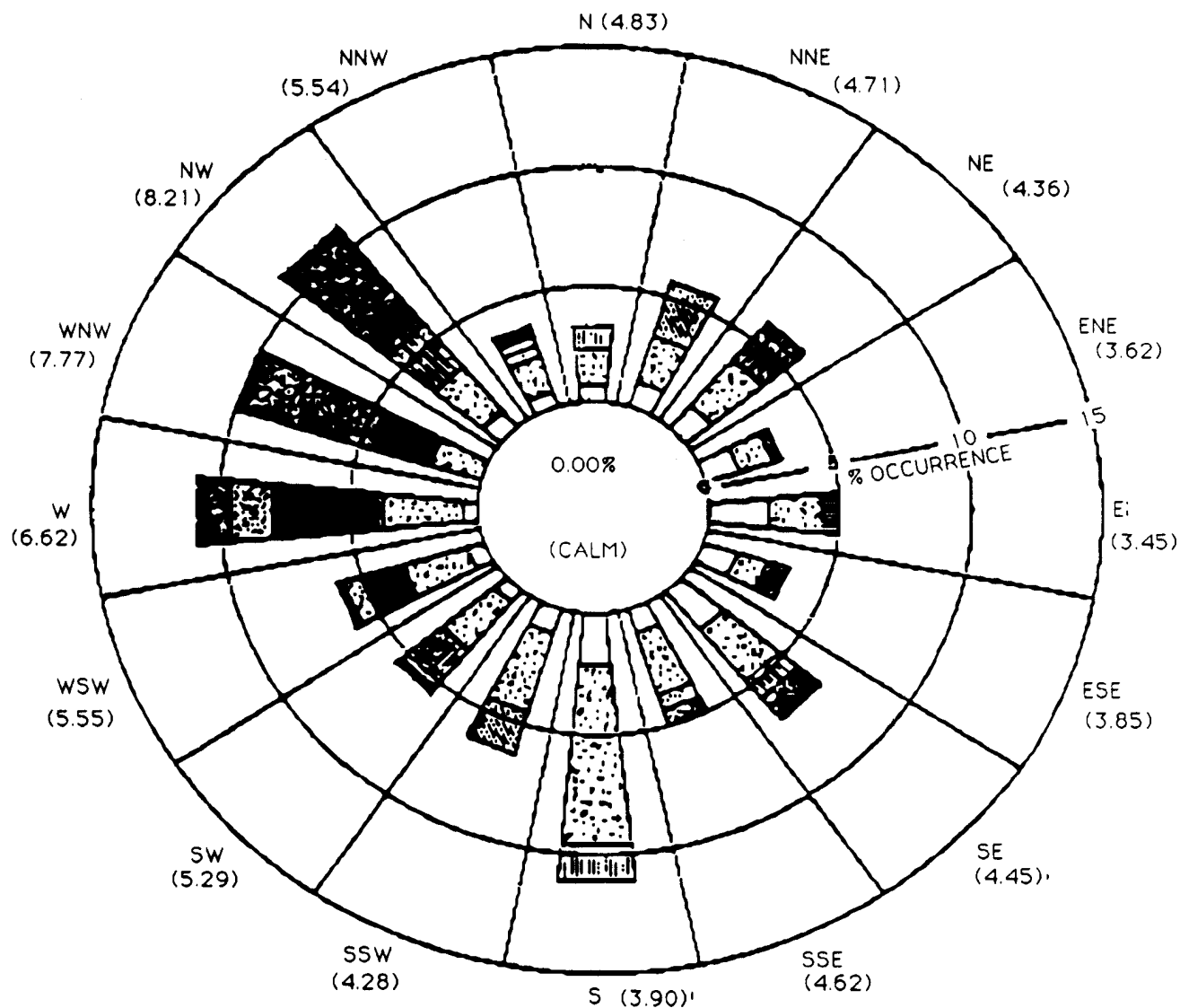
NOTE: This is a small scale generalized map.
Maximum intensity level may be locally higher or lower than is shown.
Risk depends on frequency of occurrence as well as on maximum expected intensity

After C.F. Richter, Bulletin Seismological Society of America, Vol 49, April, 1959.

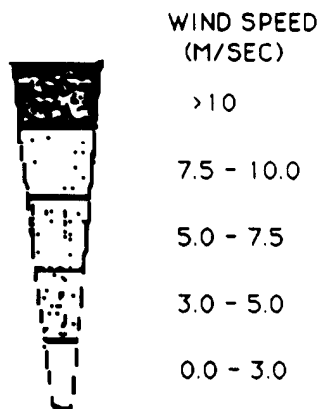
METEOROLOGICAL TOWER LOCATIONS



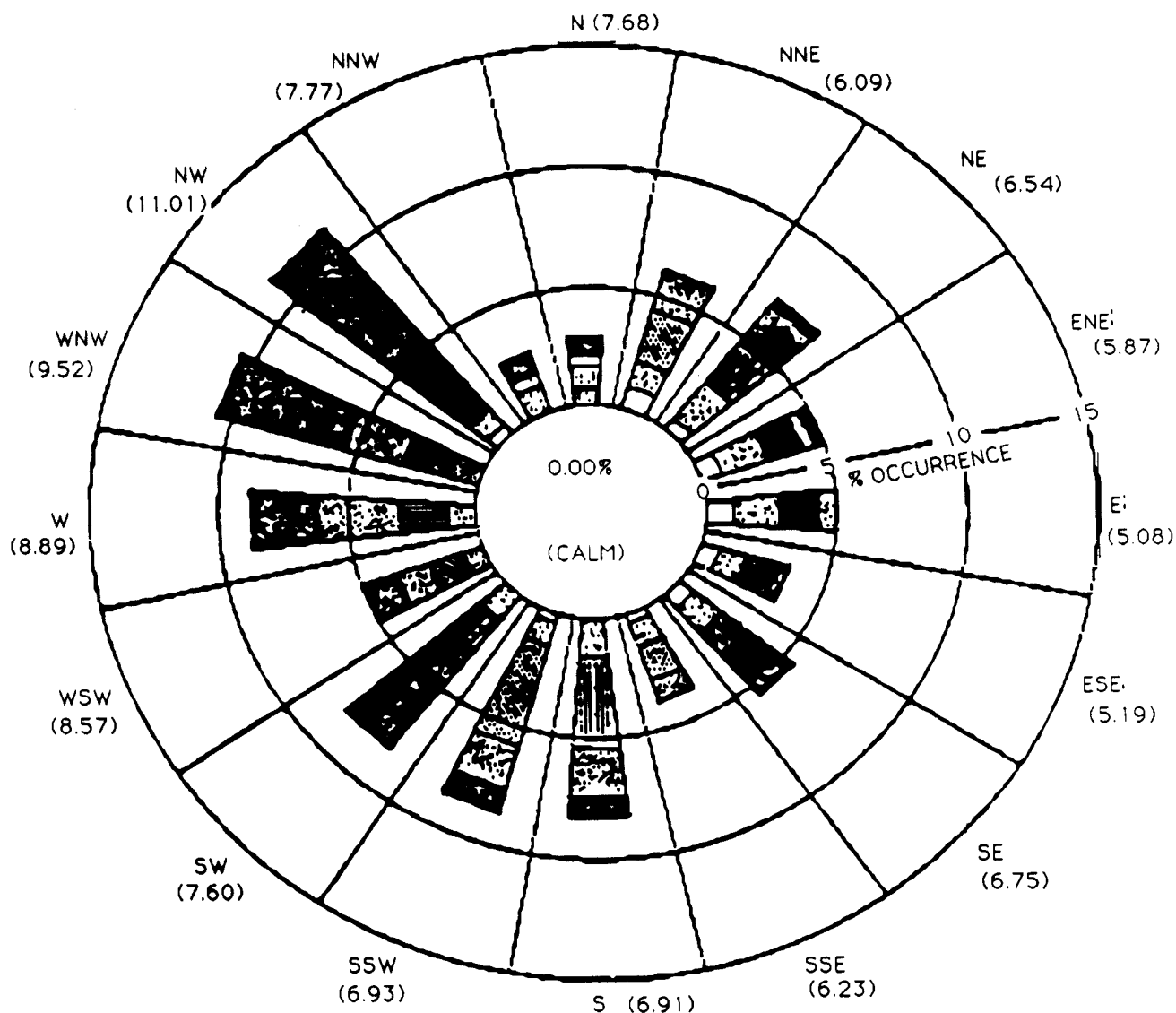
**10 METER WIND FREQUENCY DISTRIBUTION - PALISADES SITE
DECEMBER 1, 1977 THROUGH FEBRUARY 28, 1978**

**LEGEND:**

(X.XX) - MEAN WIND SPEED
(m/sec) FOR SECTOR

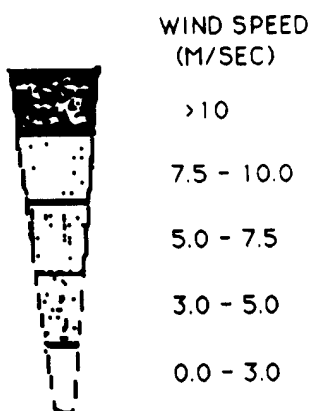


1

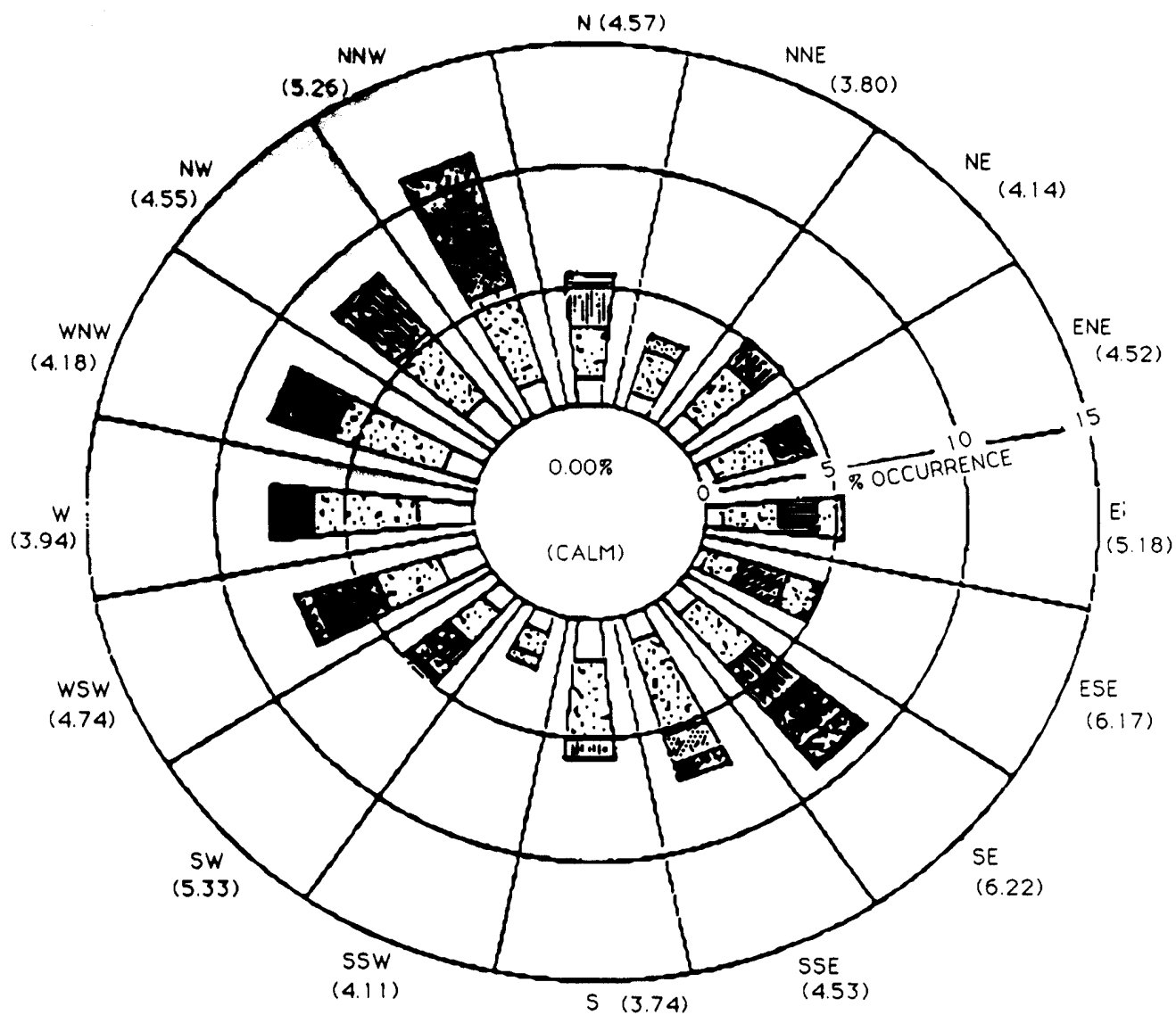


LEGEND:

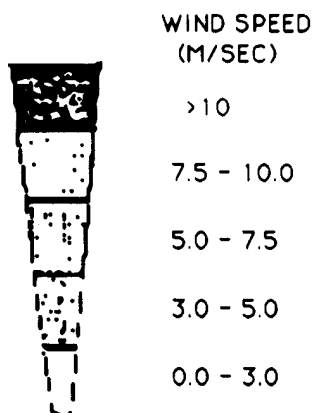
(X.XX) - MEAN WIND SPEED
(m/sec) FOR SECTOR



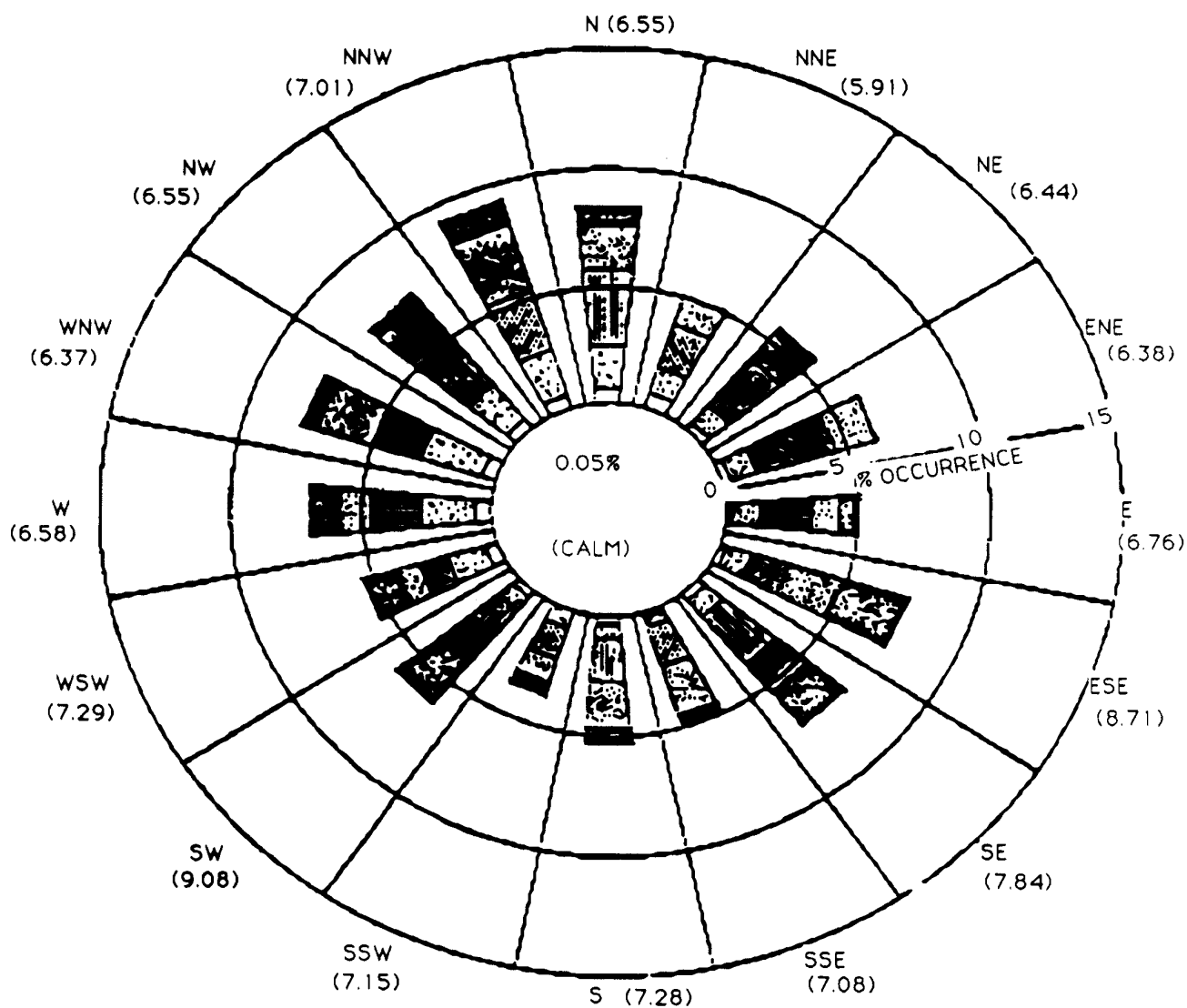
**10 METER WIND FREQUENCY DISTRIBUTION - PALISADES SITE
MARCH 1 THROUGH MAY 31, 1978**

**LEGEND:**

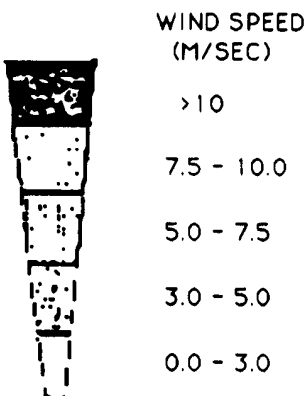
(5.62) - MEAN WIND SPEED
(m/sec) FOR SECTOR



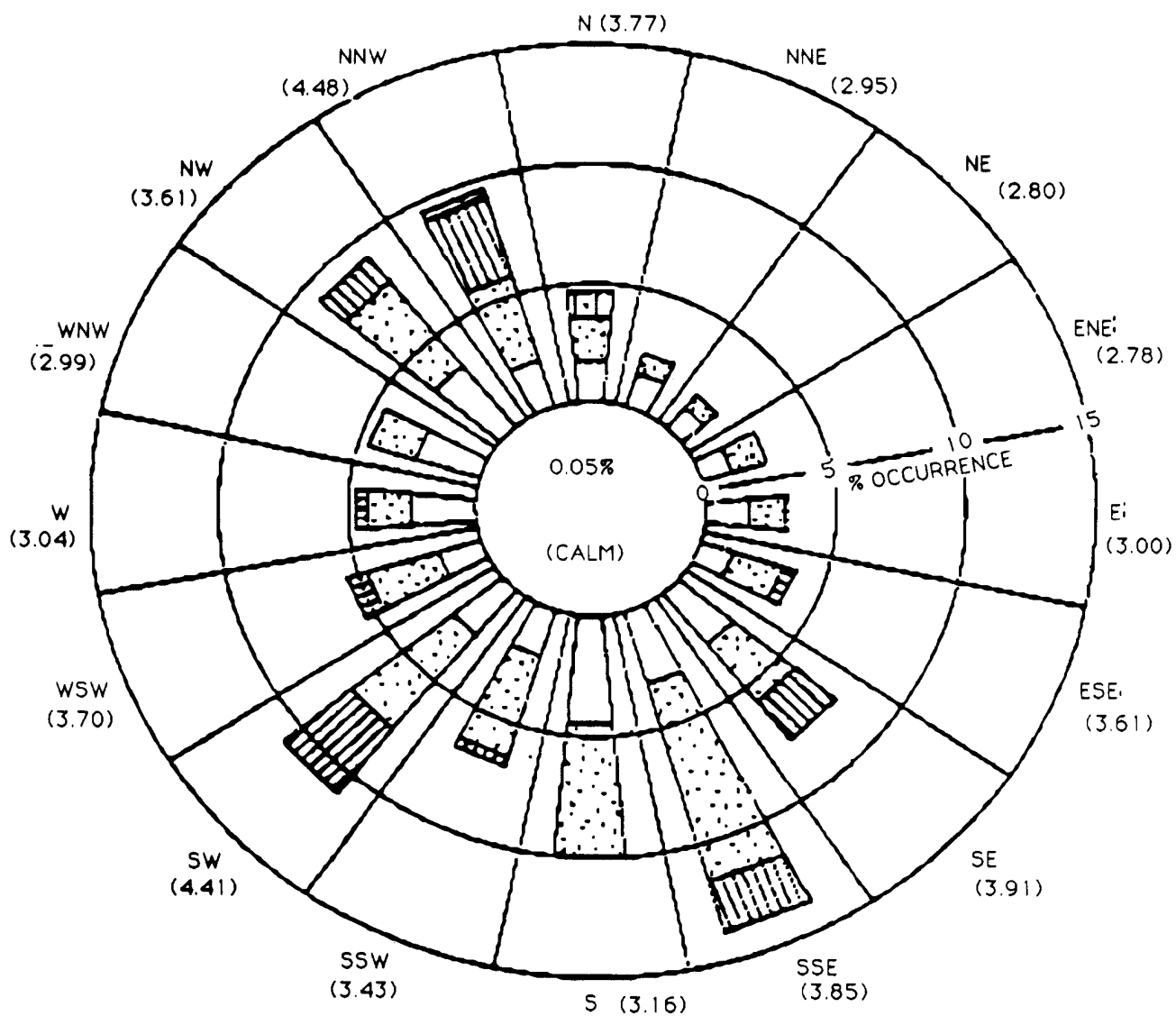
**60 METER WIND FREQUENCY DISTRIBUTION - PALISADES SITE
MARCH 1 THROUGH MAY 31, 1978**

**LEGEND:**

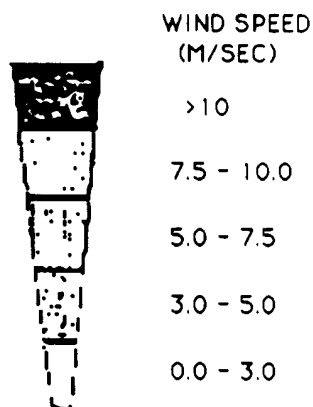
(5.62) - MEAN WIND SPEED
(m/sec) FOR SECTOR



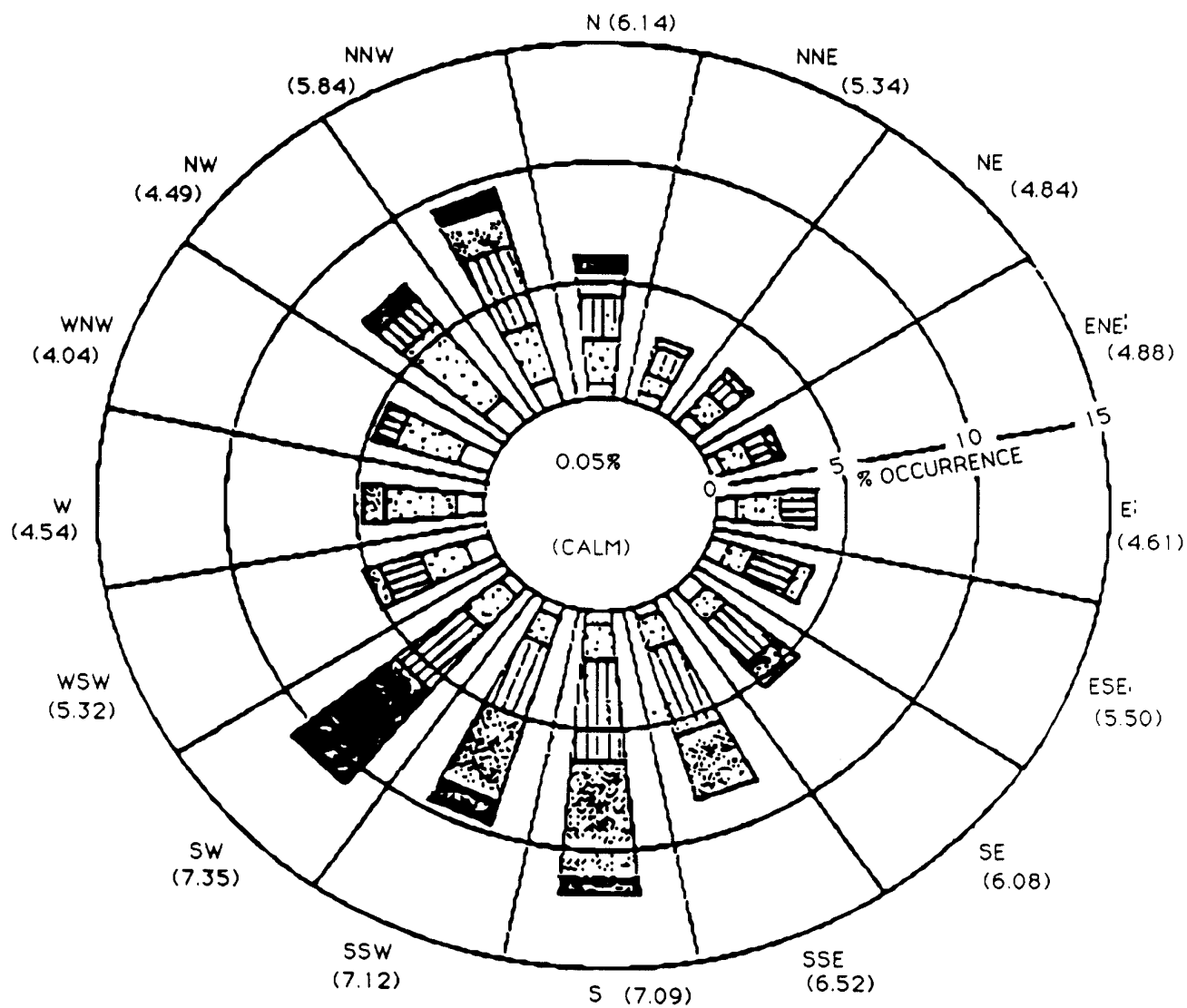
**10 METER WIND FREQUENCY DISTRIBUTION - PALISADES SITE
JUNE 1 THROUGH AUGUST 31, 1978**

**LEGEND:**

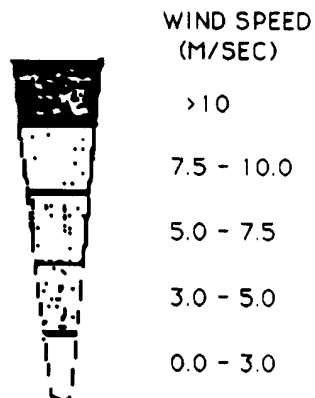
(5.62) - MEAN WIND SPEED
(m/sec) FOR SECTOR



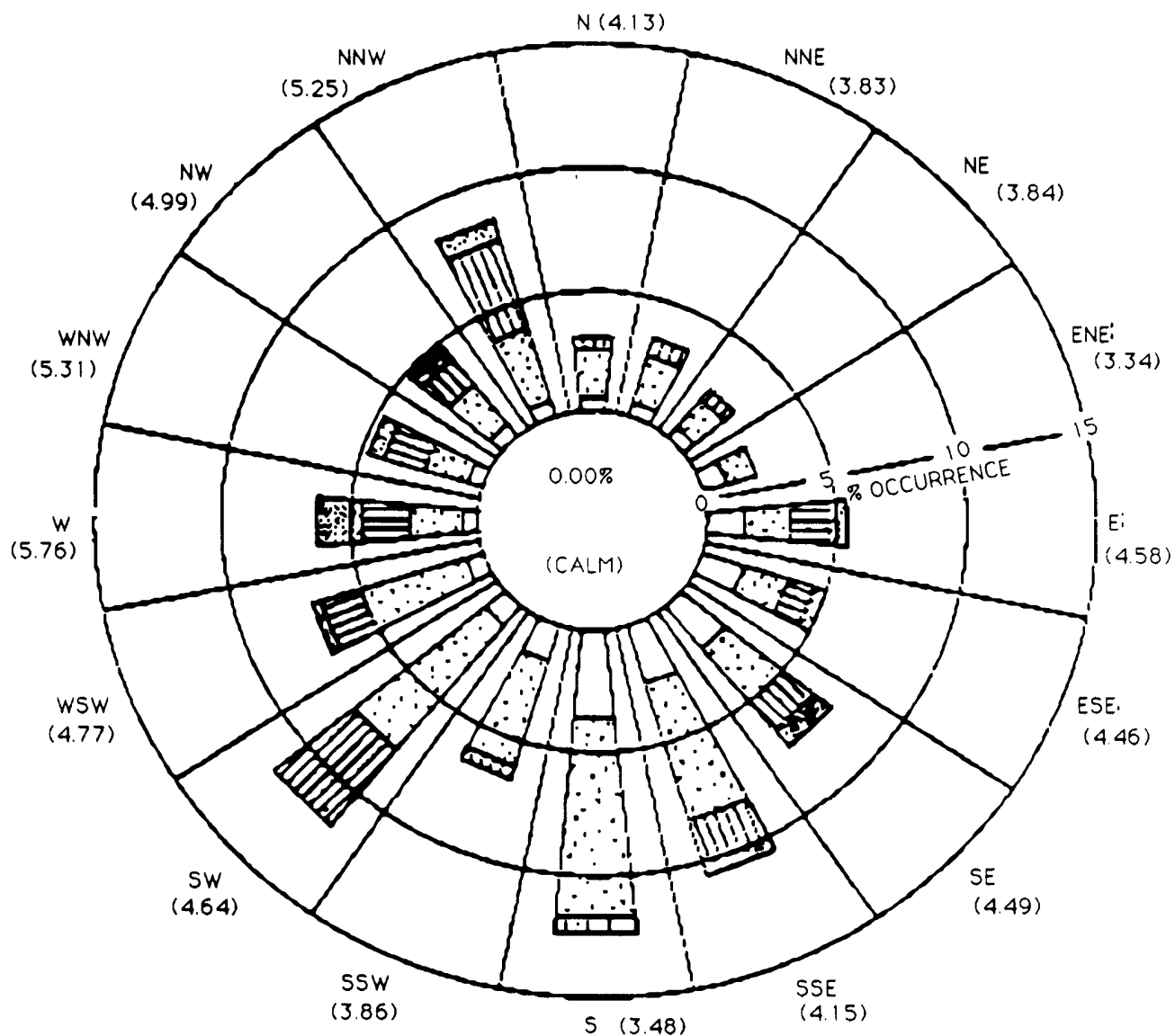
**60 METER WIND FREQUENCY DISTRIBUTION - PALISADES SITE
JUNE 1 THROUGH AUGUST 31, 1978**

**LEGEND:**

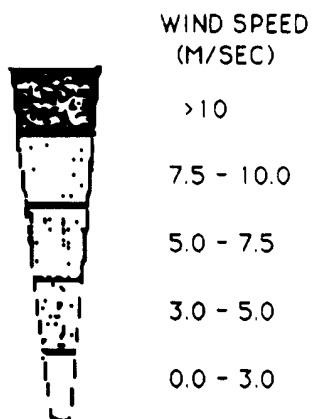
(5.62) - MEAN WIND SPEED
(m/sec) FOR SECTOR



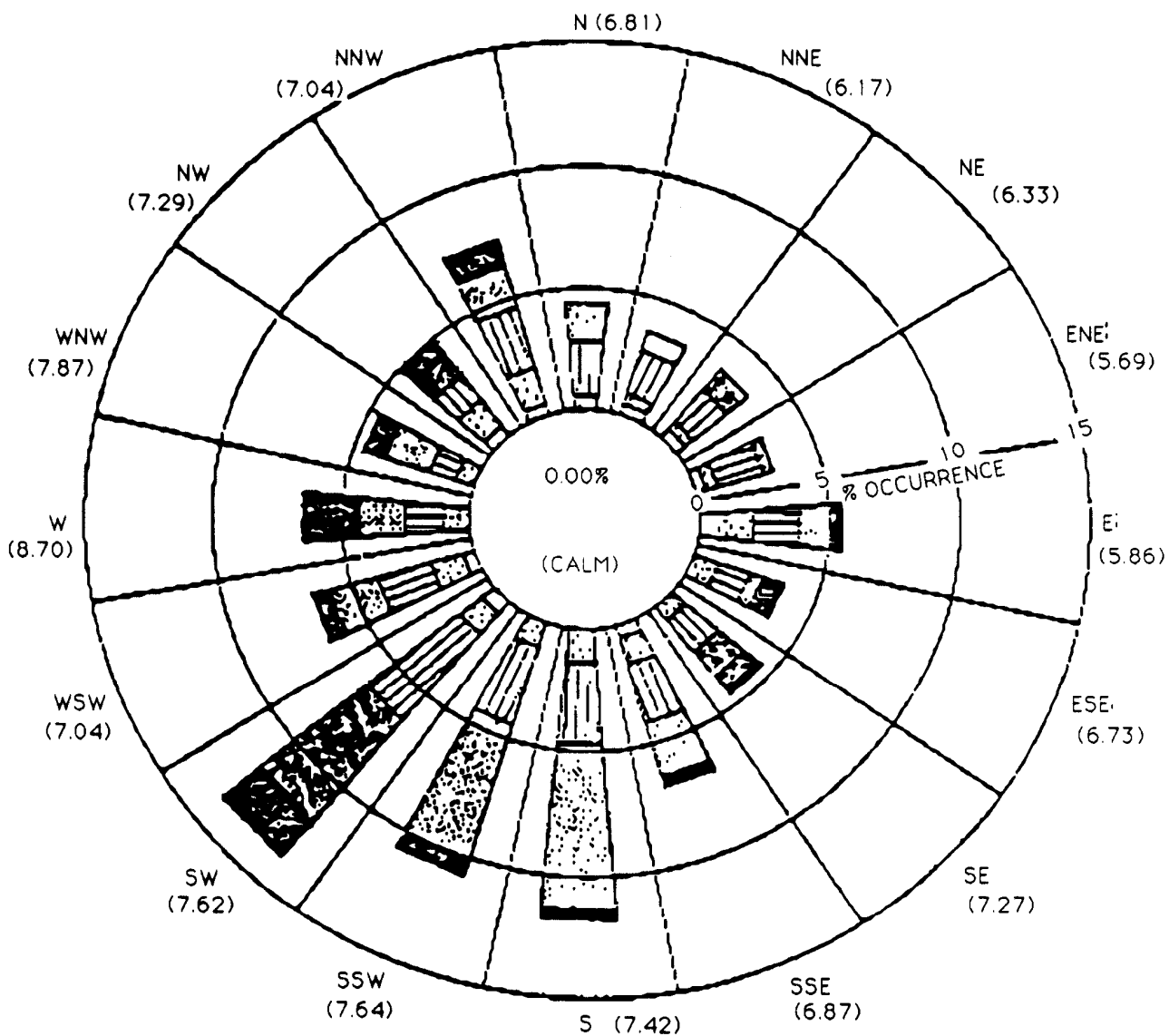
**10 METER WIND FREQUENCY DISTRIBUTION - PALISADES SITE
SEPTEMBER 1 THROUGH NOVEMBER 30, 1978**

**LEGEND:**

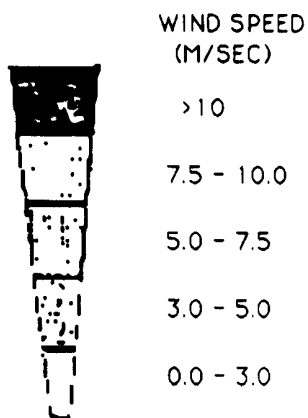
(5.62) - MEAN WIND SPEED
(m/sec) FOR SECTOR



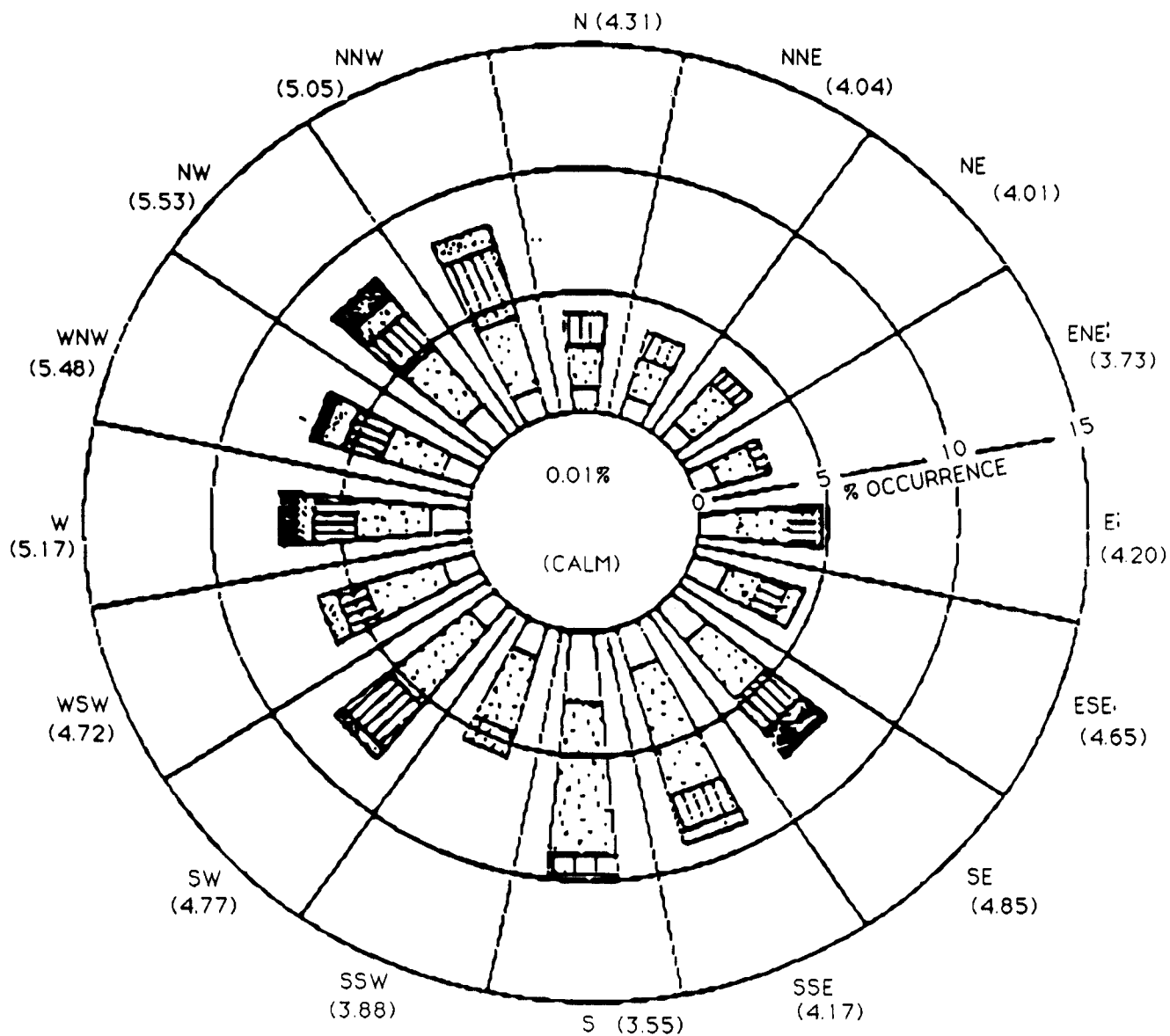
**60 METER WIND FREQUENCY DISTRIBUTION - PALISADES SITE
SEPTEMBER 1 THROUGH NOVEMBER 30, 1978**

**LEGEND:**

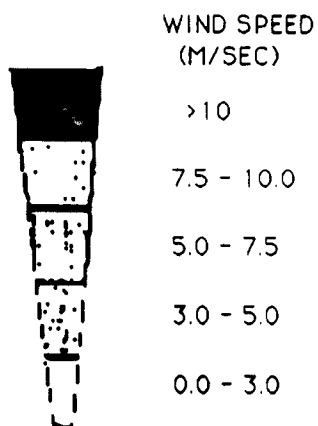
(5.62) - MEAN WIND SPEED
(m/sec) FOR SECTOR



**10 METER WIND FREQUENCY DISTRIBUTION - PALISADES SITE
DECEMBER 1, 1977 THROUGH NOVEMBER 30, 1978**

**LEGEND:**

(5.62) - MEAN WIND SPEED
(m/sec) FOR SECTOR



**60 METER WIND FREQUENCY DISTRIBUTION - PALISADES SITE
DECEMBER 1, 1977 THROUGH NOVEMBER 30, 1978**

