

Figure 11.5-1 Gaseous Radwaste Treatment Systems Effluent Paths and Controls

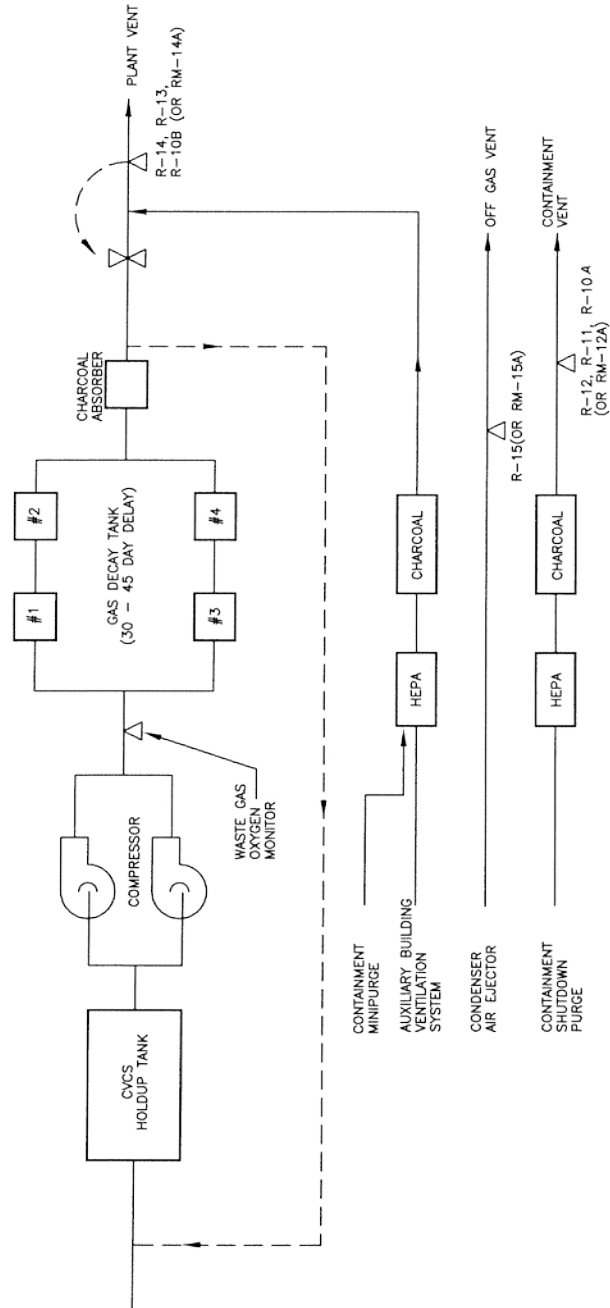
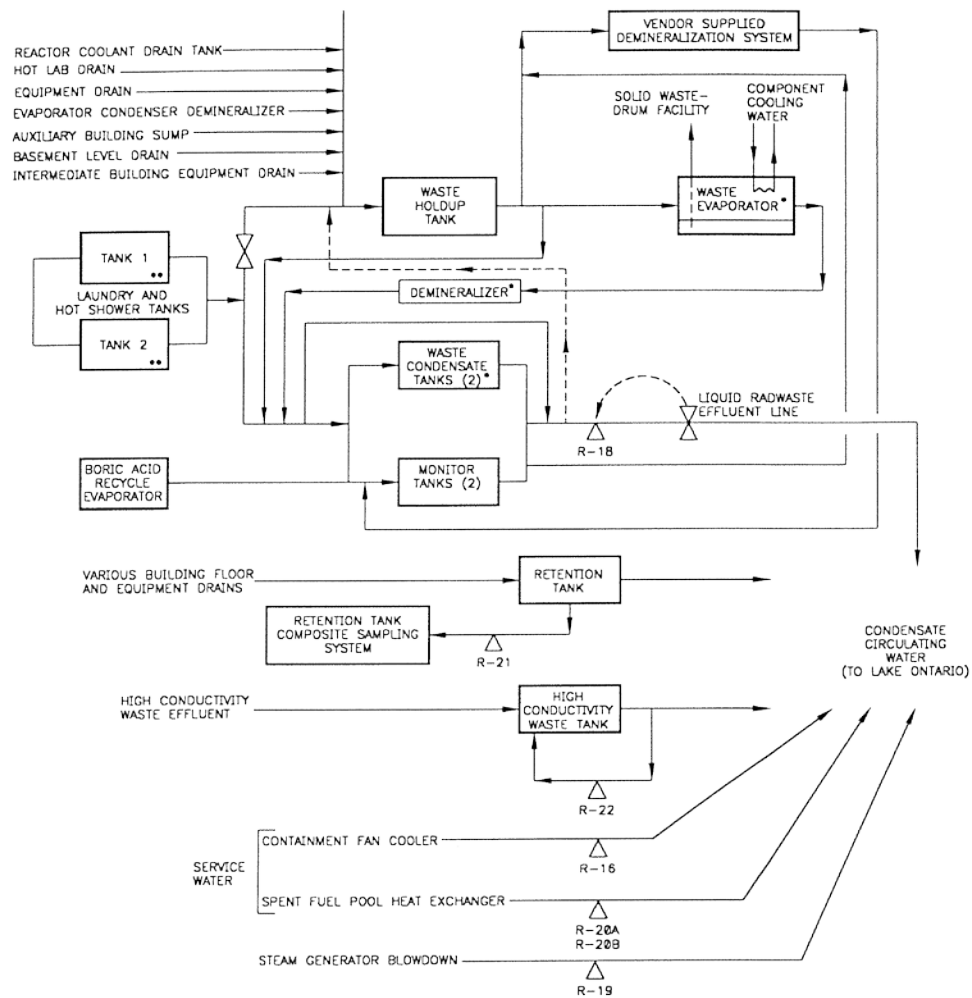


Figure 11.5-2 Liquid Radwaste Treatment Systems Effluent Paths and Controls



- * USE OF THE WASTE EVAPORATOR, DEMINERALIZER, AND WASTE CONDENSATE TANKS WAS DISCONTINUED IN 1990.
- ** USE OF THE LAUNDRY WAS DISCONTINUED IN 1994.

ROCHESTER GAS AND ELECTRIC CORPORATION
R.E. GINNA NUCLEAR POWER PLANT
UPDATED FINAL SAFETY ANALYSIS REPORT

Figure 11.5-2
Liquid Radwaste Treatment Systems
Effluent Paths and Controls

REV. 15 10/89