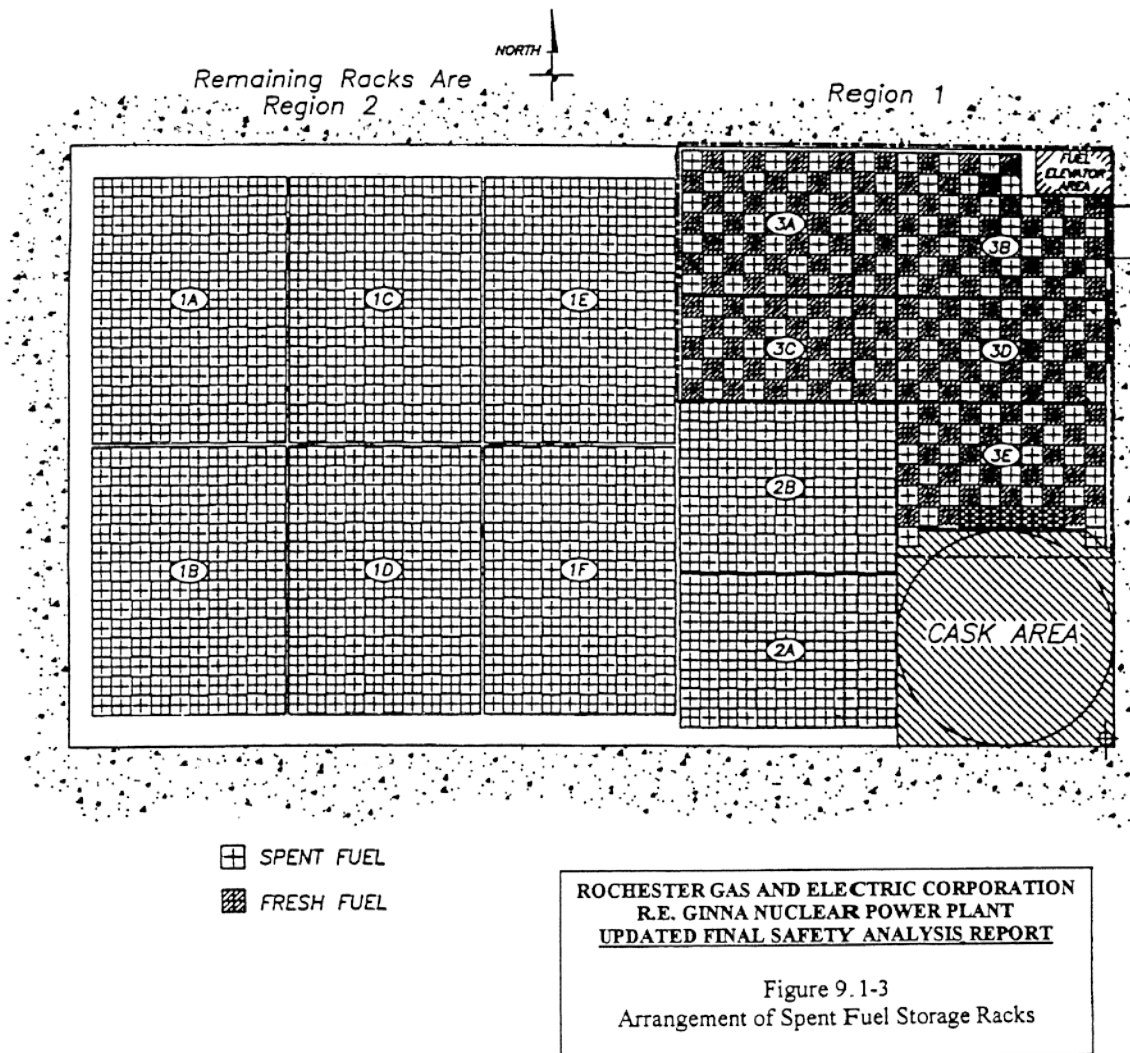


Figure 9.1-2 Figure DELETED

Figure Deleted

Figure 9.1-3 Arrangement of Spent Fuel Storage Racks



REV. 15 10/99

Figure 9.1-4 Figure DELETED

Figure Deleted

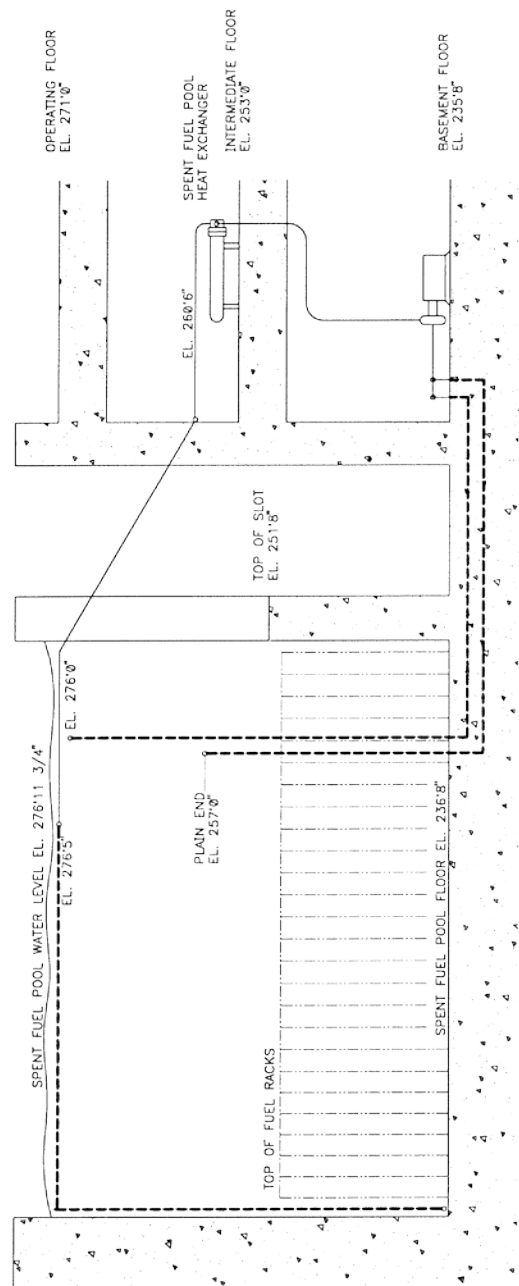
Figure 9.1-5 Figure DELETED

Figure Deleted

Figure 9.1-6 Figure DELETED

Figure Deleted

Figure 9.1-7 Spent Fuel Pool Cooling Cycle



NOTES:
1. DISCHARGE IS TO FLOOR ELEVATION AT WEST END OF POOL.
2. ALL ELEVATIONS ARE REFERENCE DIMENSIONS.

ROCHESTER GAS AND ELECTRIC CORPORATION R.E. GINNA NUCLEAR POWER PLANT UPDATED FINAL SAFETY ANALYSIS REPORT
Figure 9.1-7 Spent Fuel Pool Cooling Cycle

REV. 15 10/99

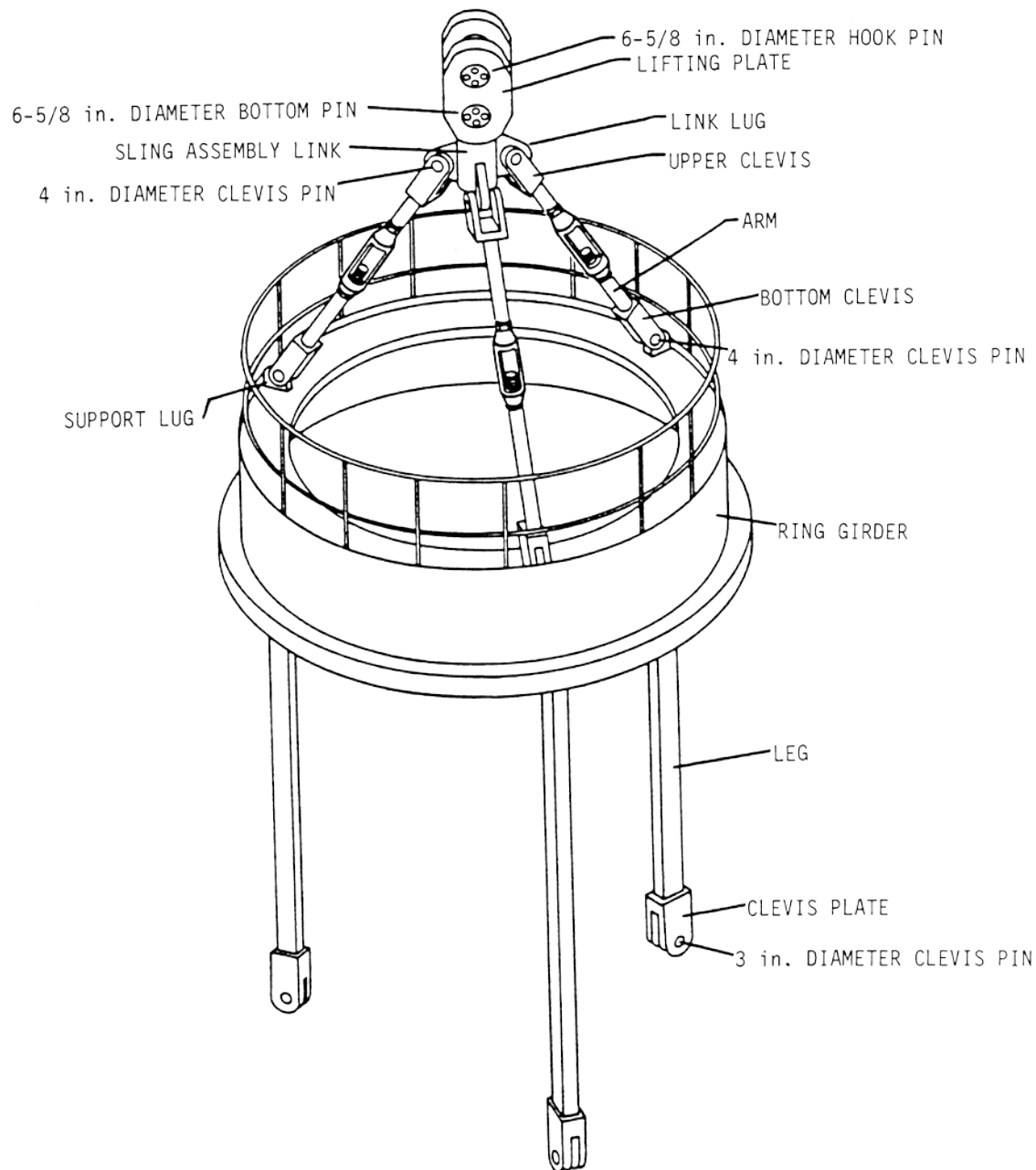
Figure 9.1-8 Figure DELETED

Figure Deleted

Figure 9.1-9 ***Figure DELETED***

Figure Deleted

Figure 9.1-10 Reactor Vessel Head Lifting Device



ROCHESTER GAS AND ELECTRIC CORPORATION R.E. GINNA NUCLEAR POWER PLANT UPDATED FINAL SAFETY ANALYSIS REPORT
<p>Figure 9.1-10 Reactor Vessel Head Lifting Device</p>

Figure 9.1-11 Fuel Handling Devices

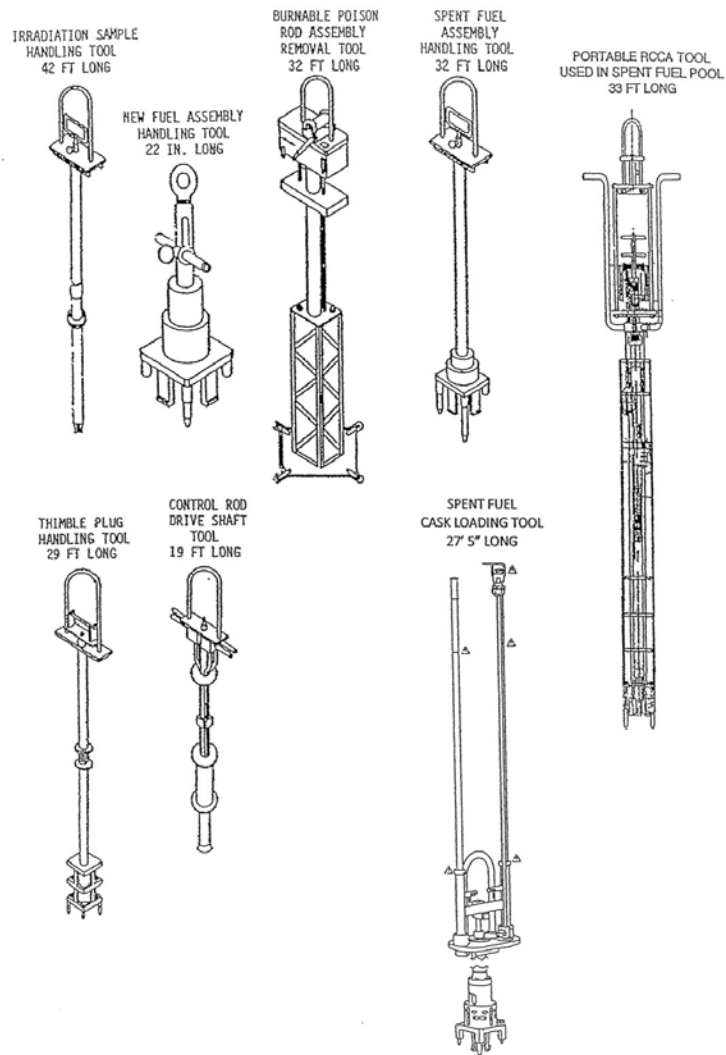


Figure 9.3-1 Maximum Tritium Activity Released to Primary Coolant

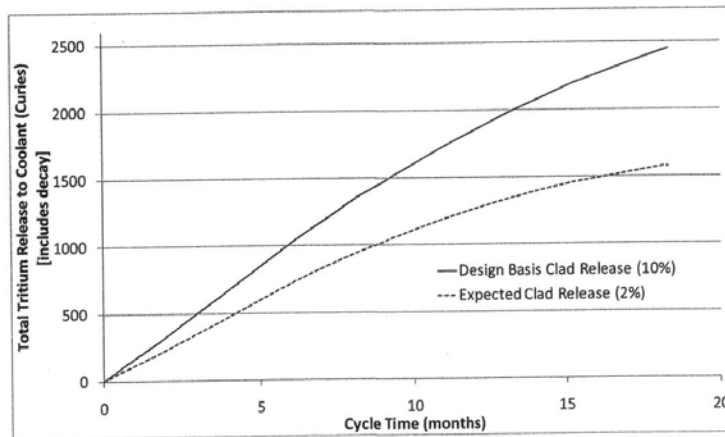


Figure 9.5-1 Figure DELETED

Figure Deleted

Figure 9.5-2 Figure DELETED

Figure Deleted

Figure 9.5-3 Figure DELETED

Figure Deleted

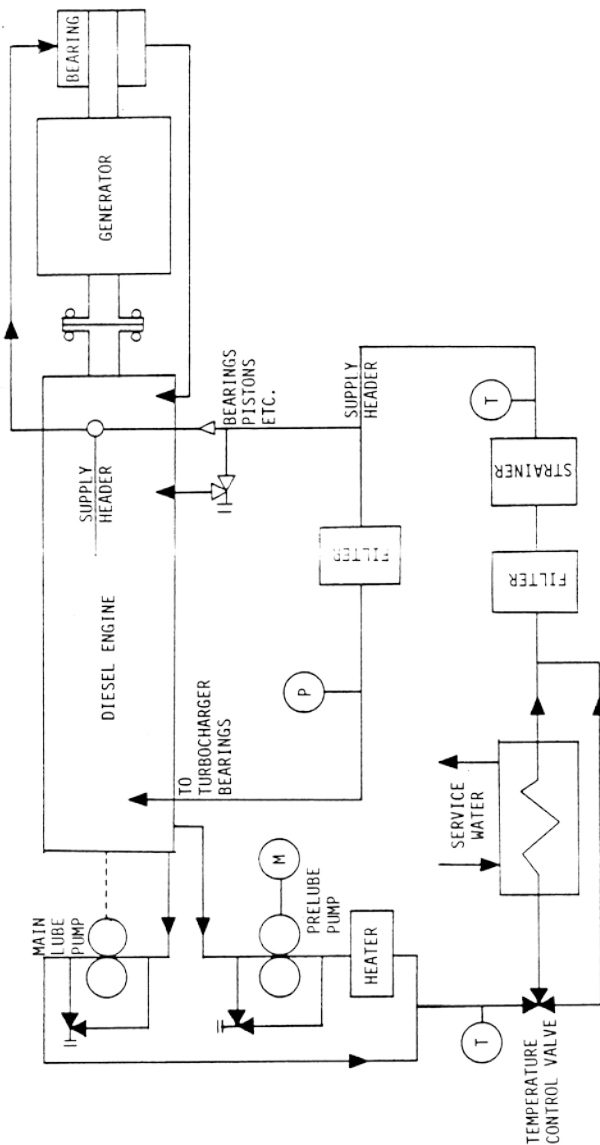
Figure 9.5-4 Figure DELETED

Figure Deleted

Figure 9.5-5 Figure DELETED

Figure Deleted

Figure 9.5-6 Diesel Engine Lubricating Oil Systems (Simplified)



ROCHESTER GAS AND ELECTRIC CORPORATION
R. E. GINNA NUCLEAR POWER PLANT
UPDATED FINAL SAFETY ANALYSIS REPORT

Figure 9.5-6
Diesel Engine Lubricating Oil System
(Simplified)

REV 3 12/87