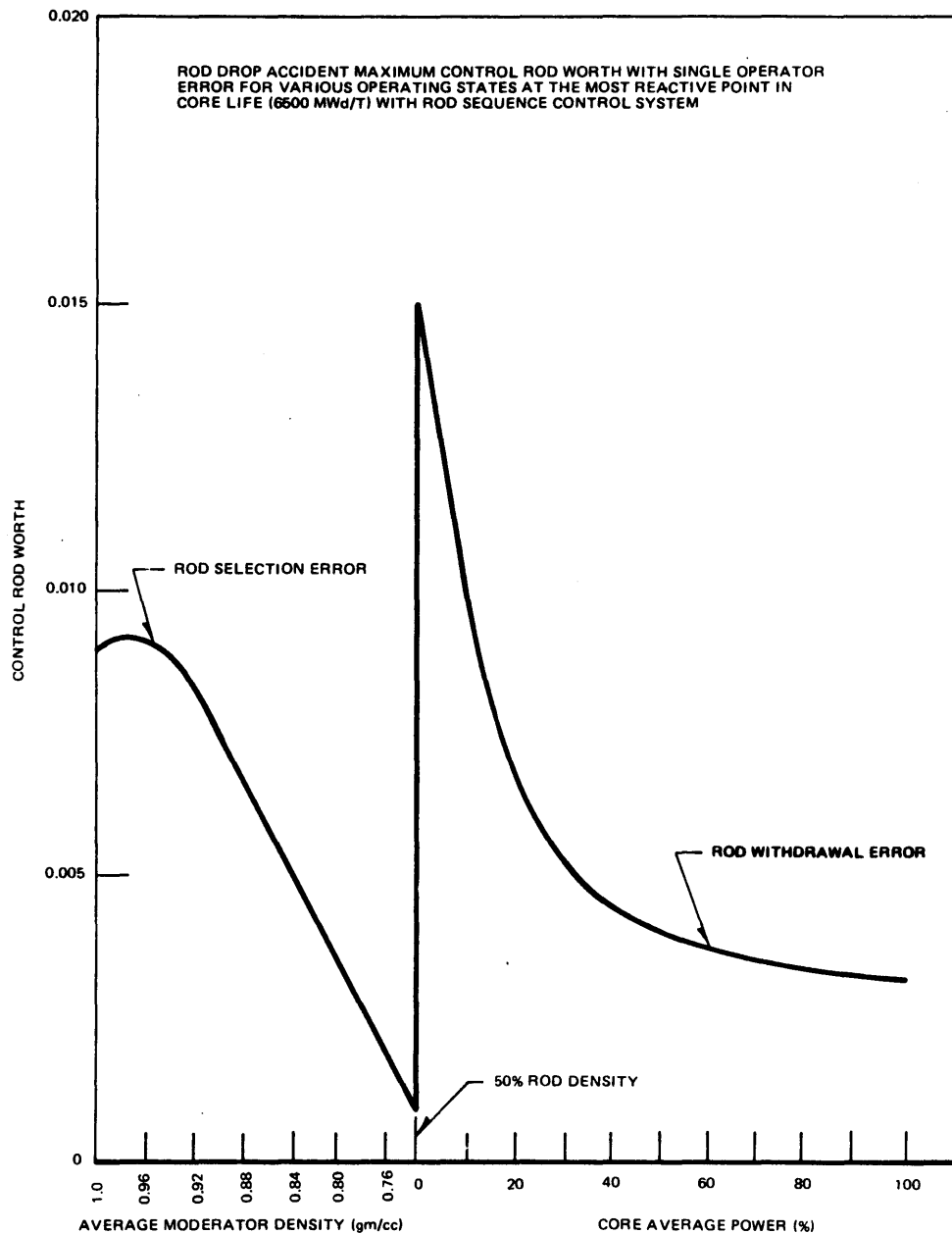


**PHILADELPHIA ELECTRIC COMPANY
PEACH BOTTOM ATOMIC POWER STATION
UNITS 2 AND 3
UPDATED FINAL SAFETY ANALYSIS REPORT**

**ROD DROP ACCIDENT MAXIMUM
CONTROL ROD WORTH WITH SINGLE
OPERATOR ERROR AT BOL WITH RSCS**

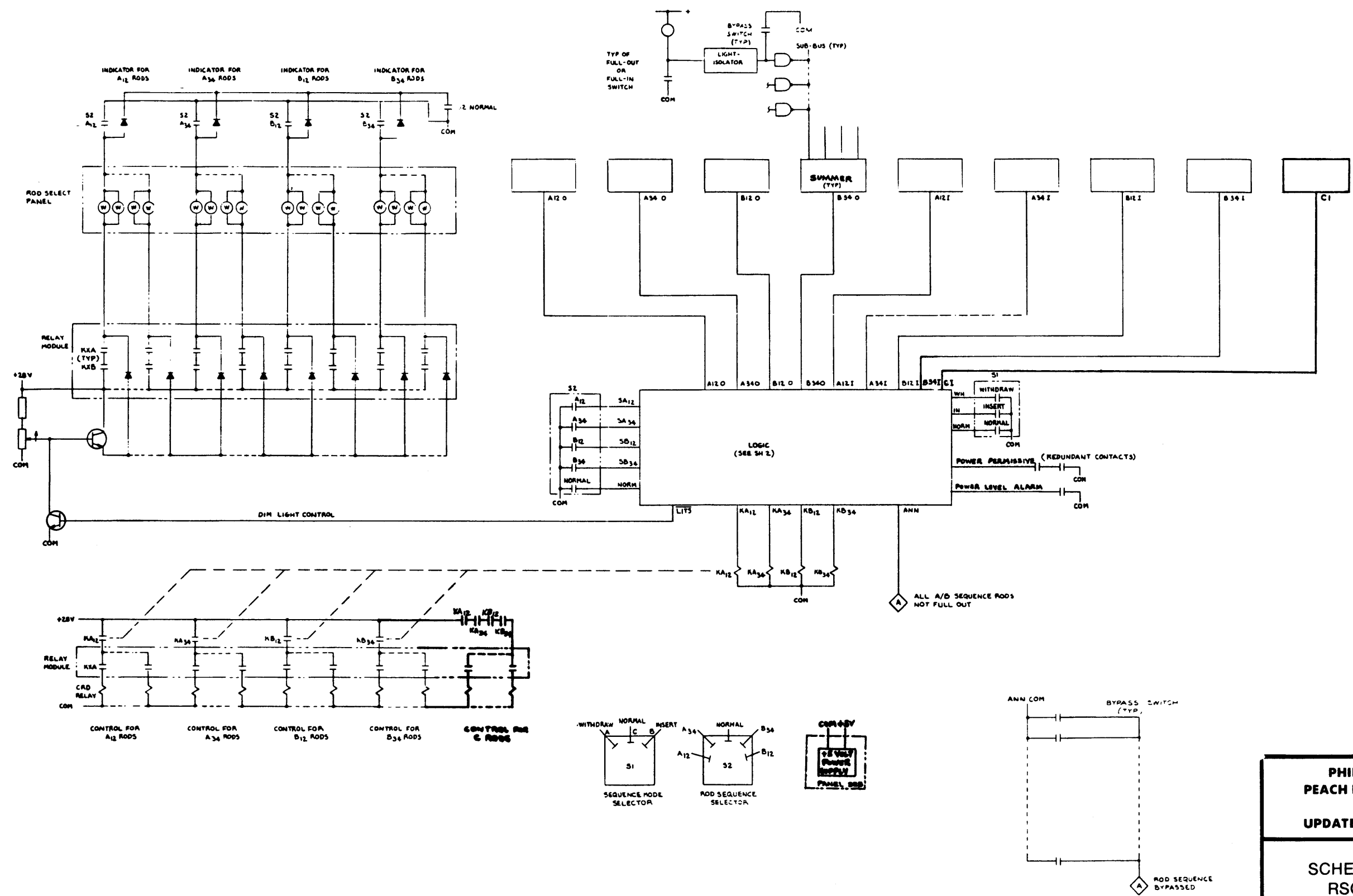
FIGURE J.4.1



**PHILADELPHIA ELECTRIC COMPANY
PEACH BOTTOM ATOMIC POWER STATION
UNITS 2 AND 3
UPDATED FINAL SAFETY ANALYSIS REPORT**

**ROD DROP ACCIDENT MAXIMUM CONTROL
ROD WORTH WITH SINGLE OPERATOR
ERROR AT MOST REACTIVE POINT IN
CORE LIFE (6500 MWd/T) WITH RSCS**

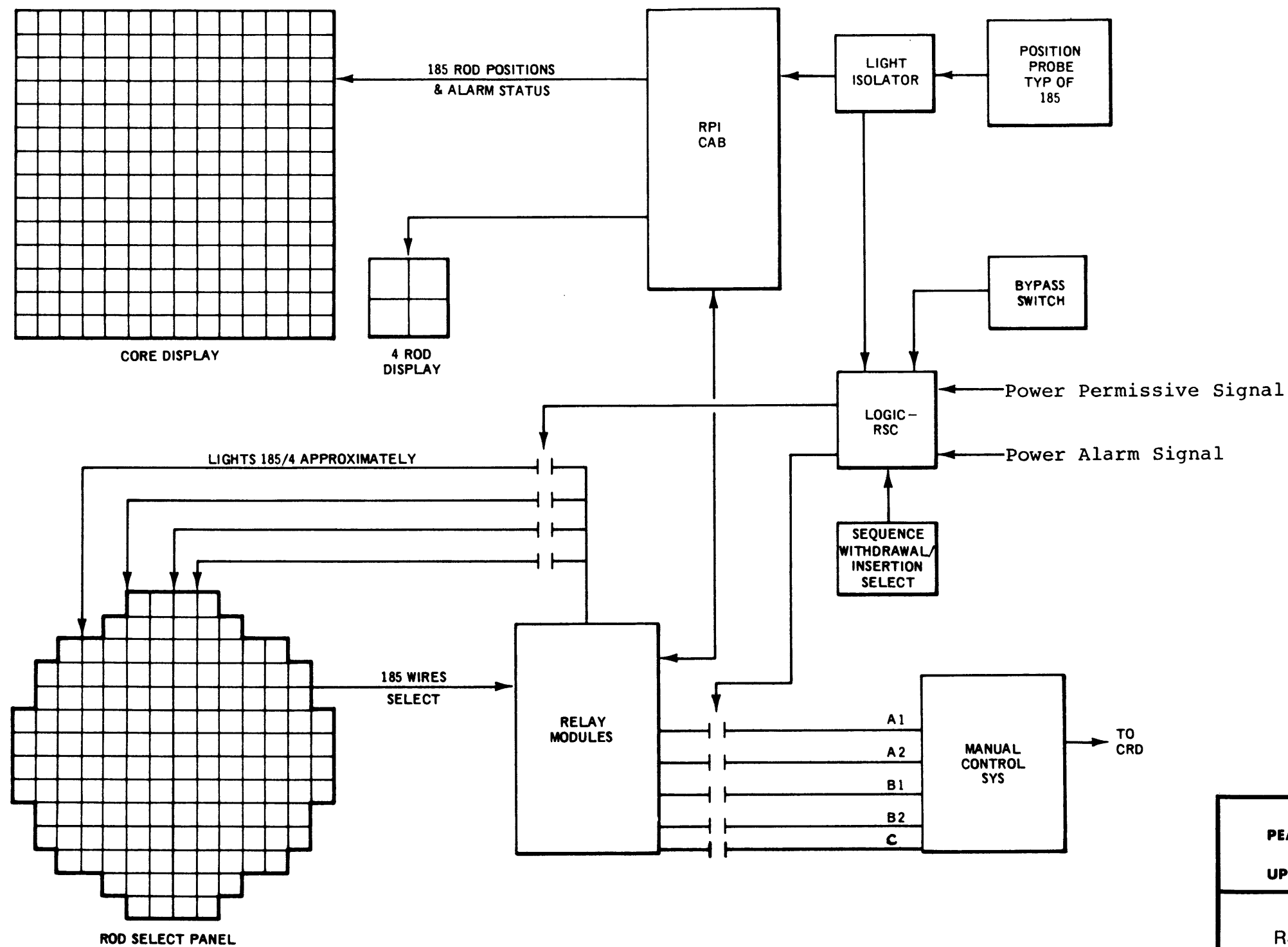
FIGURE J.4.2



PHILADELPHIA ELECTRIC COMPANY
PEACH BOTTOM ATOMIC POWER STATION
UNITS 2 AND 3
UPDATED FINAL SAFETY ANALYSIS REPORT

SCHEMATIC BLOCK DIAGRAM OF
RSCS FOR CORE EXPOSURE
< 6500 MWd/T

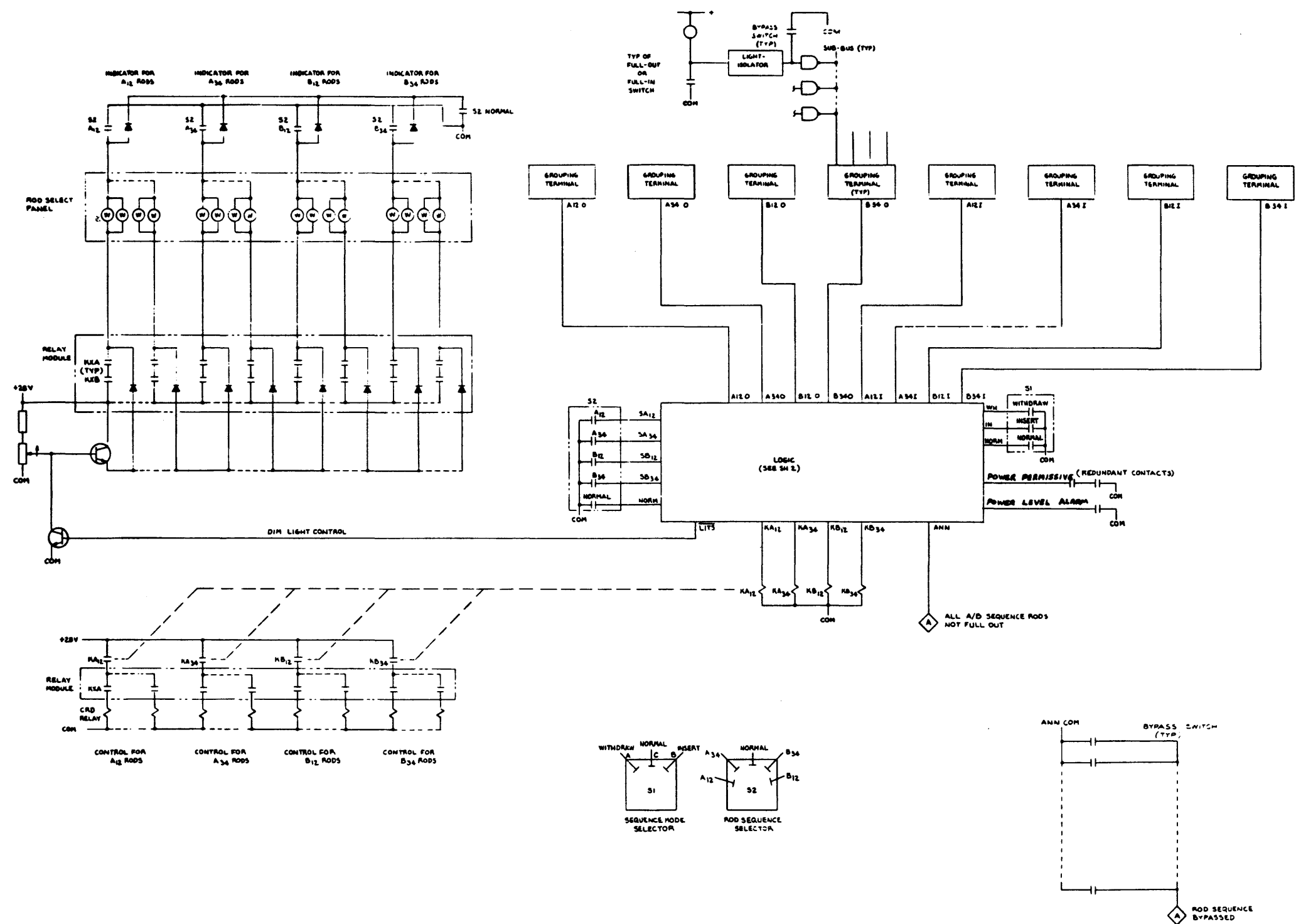
FIGURE J.4.3a



PHILADELPHIA ELECTRIC COMPANY
PEACH BOTTOM ATOMIC POWER STATION
UNITS 2 AND 3
UPDATED FINAL SAFETY ANALYSIS REPORT

RSCS BLOCK DIAGRAM FOR CORE
EXPOSURE < 6500 MWd/T

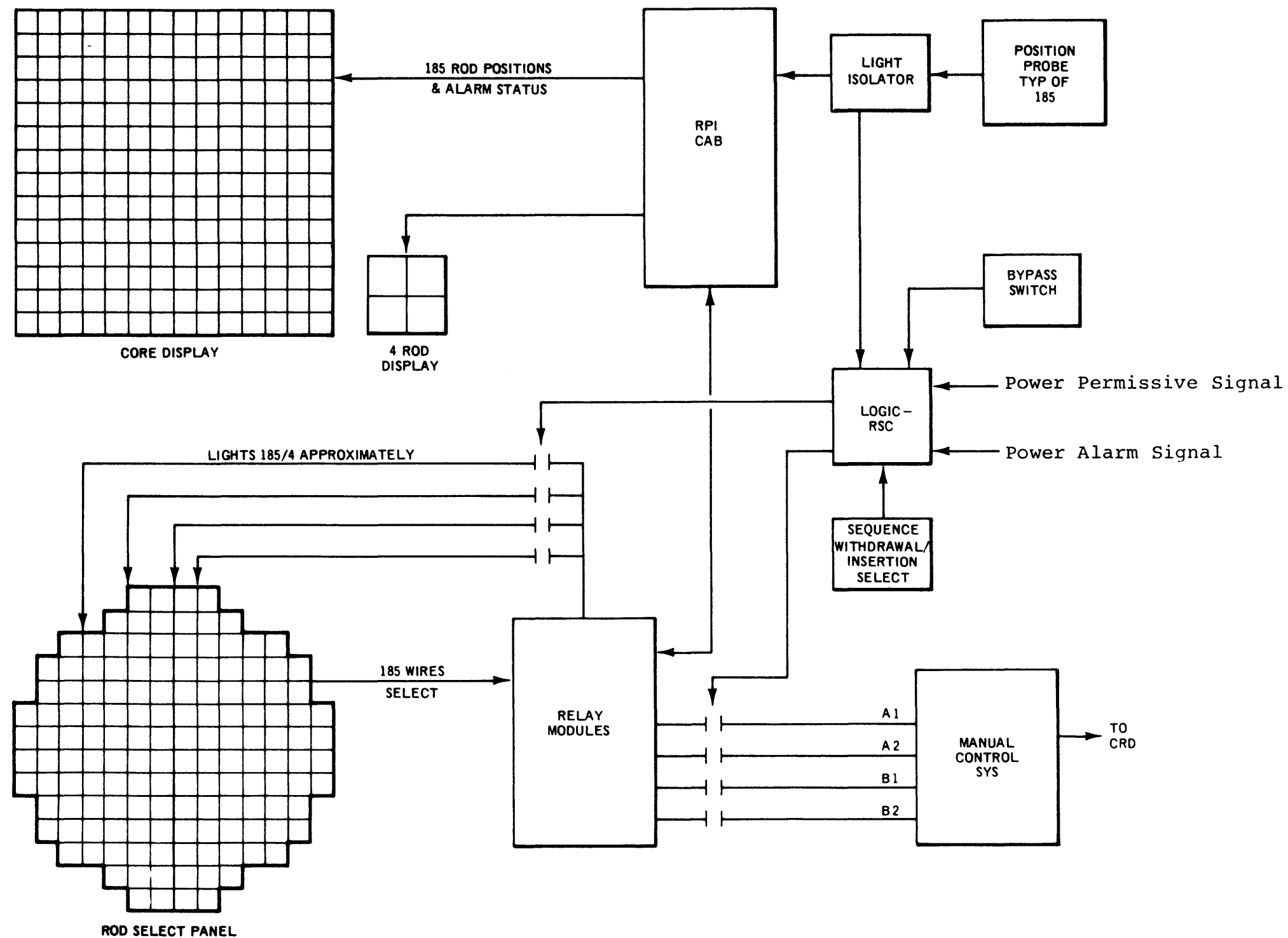
FIGURE J.4.3b



PHILADELPHIA ELECTRIC COMPANY
PEACH BOTTOM ATOMIC POWER STATION
UNITS 2 AND 3
UPDATED FINAL SAFETY ANALYSIS REPORT

SCHEMATIC BLOCK DIAGRAM OF
RSCS FOR CORE EXPOSURE
>6500 MWd/T

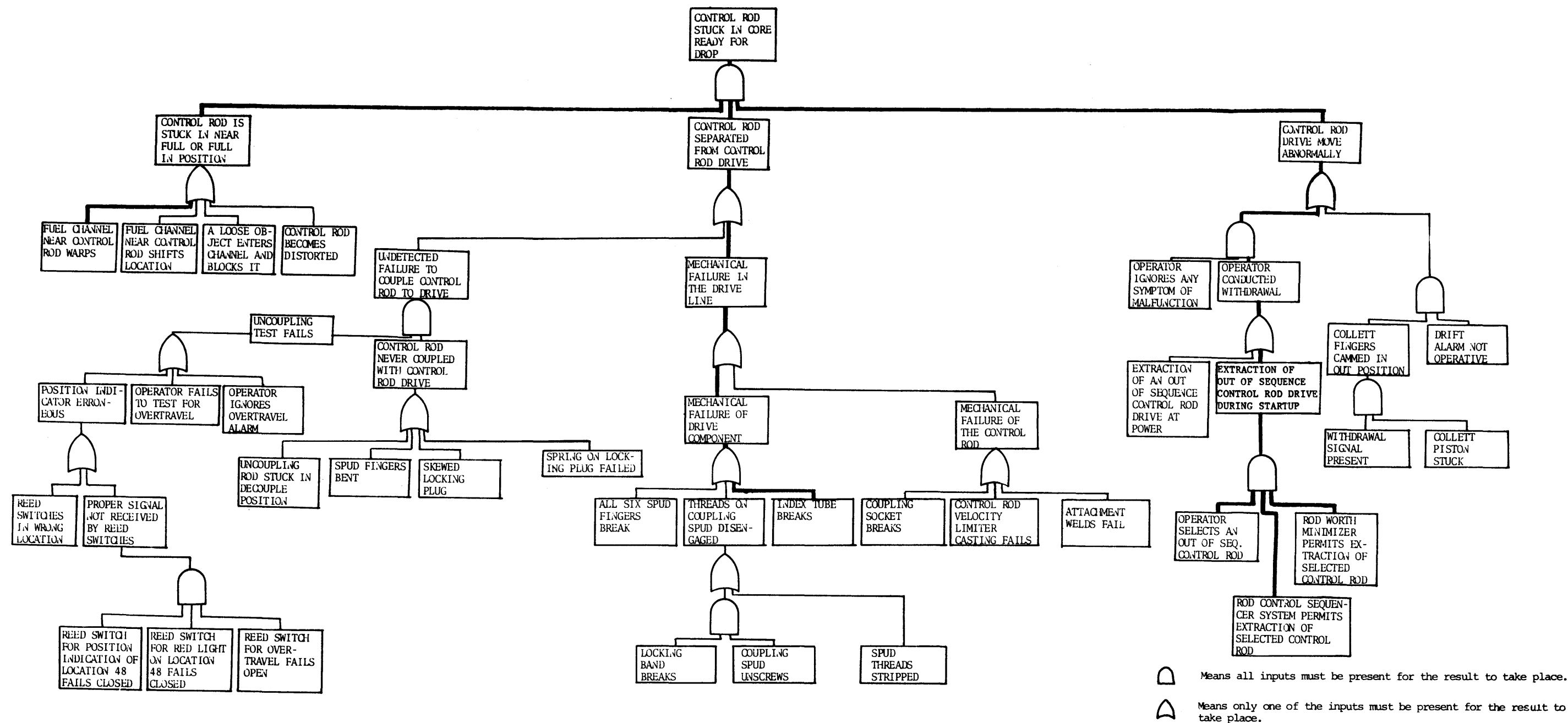
FIGURE J.4.4a



PHILADELPHIA ELECTRIC COMPANY
PEACH BOTTOM ATOMIC POWER STATION
UNITS 2 AND 3
UPDATED FINAL SAFETY ANALYSIS REPORT

RSCS BLOCK DIAGRAM FOR CORE
EXPOSURE >6500 MWd/T

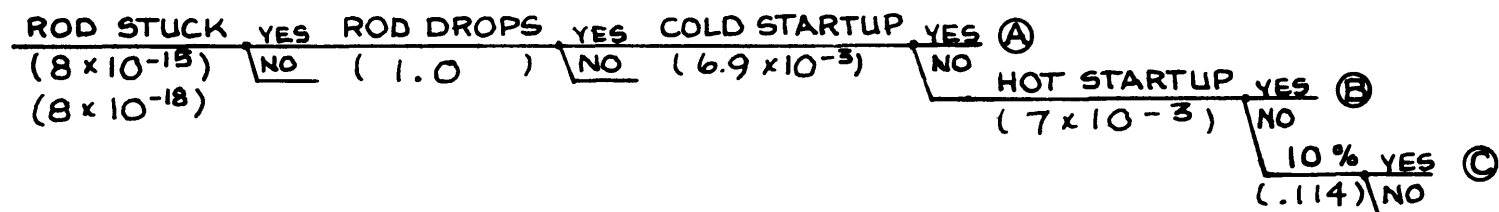
FIGURE J.4.4b



**PHILADELPHIA ELECTRIC COMPANY
PEACH BOTTOM ATOMIC POWER STATION
UNITS 2 AND 3
UPDATED FINAL SAFETY ANALYSIS REPORT**

**FAULT TREE MODEL OF A CONTROL
ROD STUCK IN CORE READY FOR
A DROP**

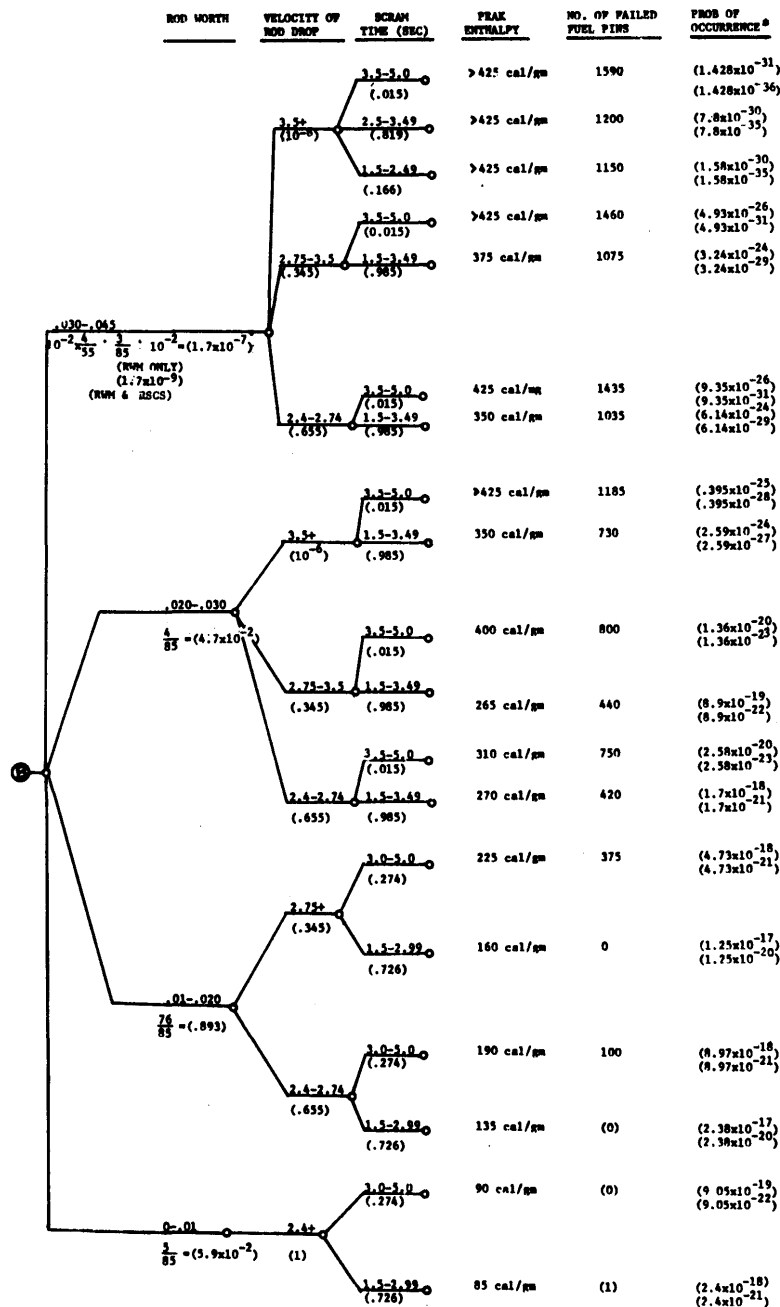
FIGURE J.4.5



PHILADELPHIA ELECTRIC COMPANY
 PEACH BOTTOM ATOMIC POWER STATION
 UNITS 2 AND 3
 UPDATED FINAL SAFETY ANALYSIS REPORT

REACTOR STATES USED IN THE
 ANALYSIS OF THE CONTROL ROD
 DROP ACCIDENT

FIGURE J.4.6

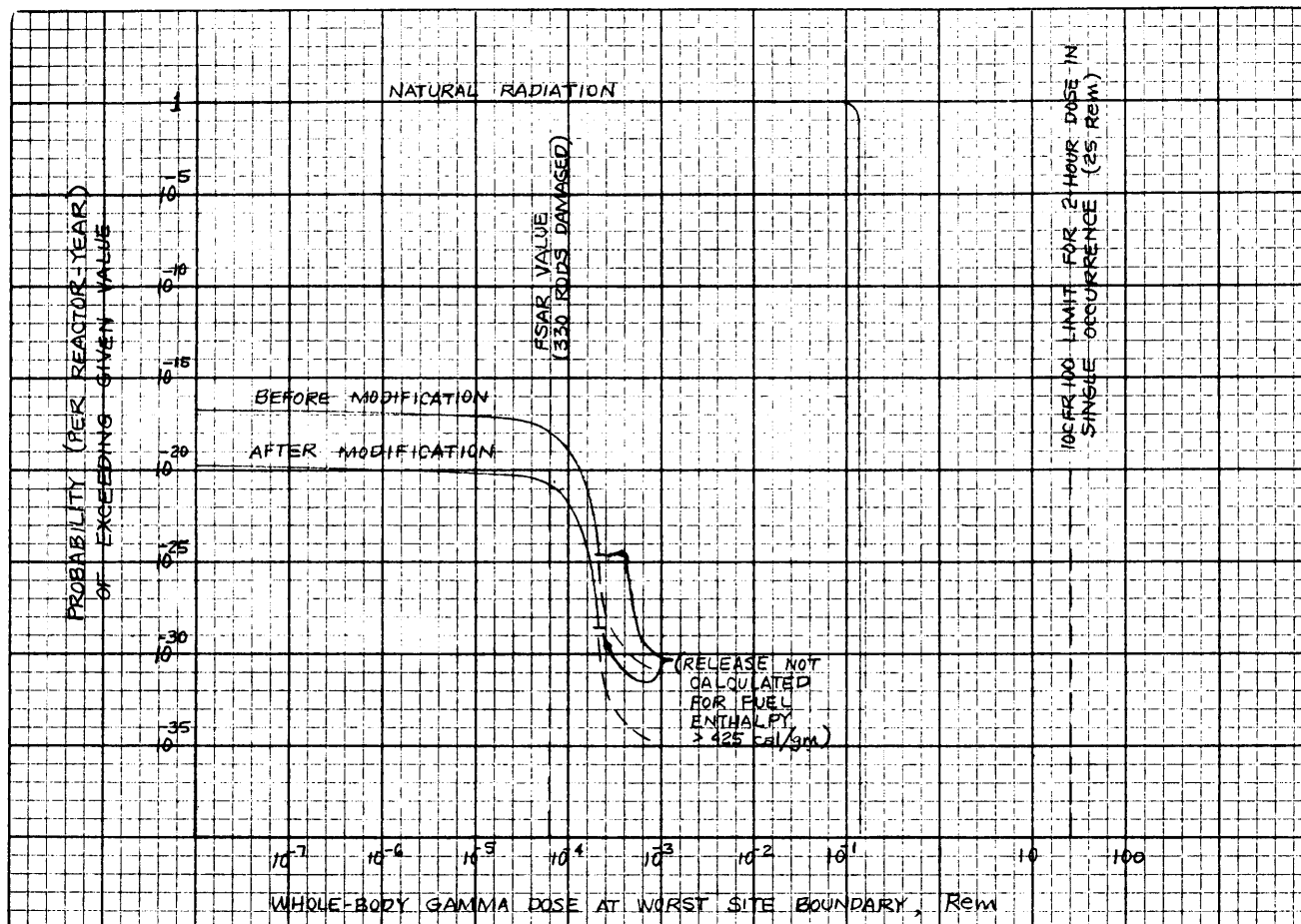


^aUpper Number Refers to Probability with Rod Worth Minimiser Only and Lower Number Refers to Probability with Rod Worth Minimiser and Rod Sequence Control System.

**PHILADELPHIA ELECTRIC COMPANY
PEACH BOTTOM ATOMIC POWER STATION
UNITS 2 AND 3
UPDATED FINAL SAFETY ANALYSIS REPORT**

**PROBABILITY ANALYSIS OF CONTROL
ROD DROP ACCIDENT**

FIGURE J.4.7



**PHILADELPHIA ELECTRIC COMPANY
PEACH BOTTOM ATOMIC POWER STATION
UNITS 2 AND 3
UPDATED FINAL SAFETY ANALYSIS REPORT**

**OFF-SITE EFFECT OF ROD DROP
ACCIDENT**

FIGURE J.4.8