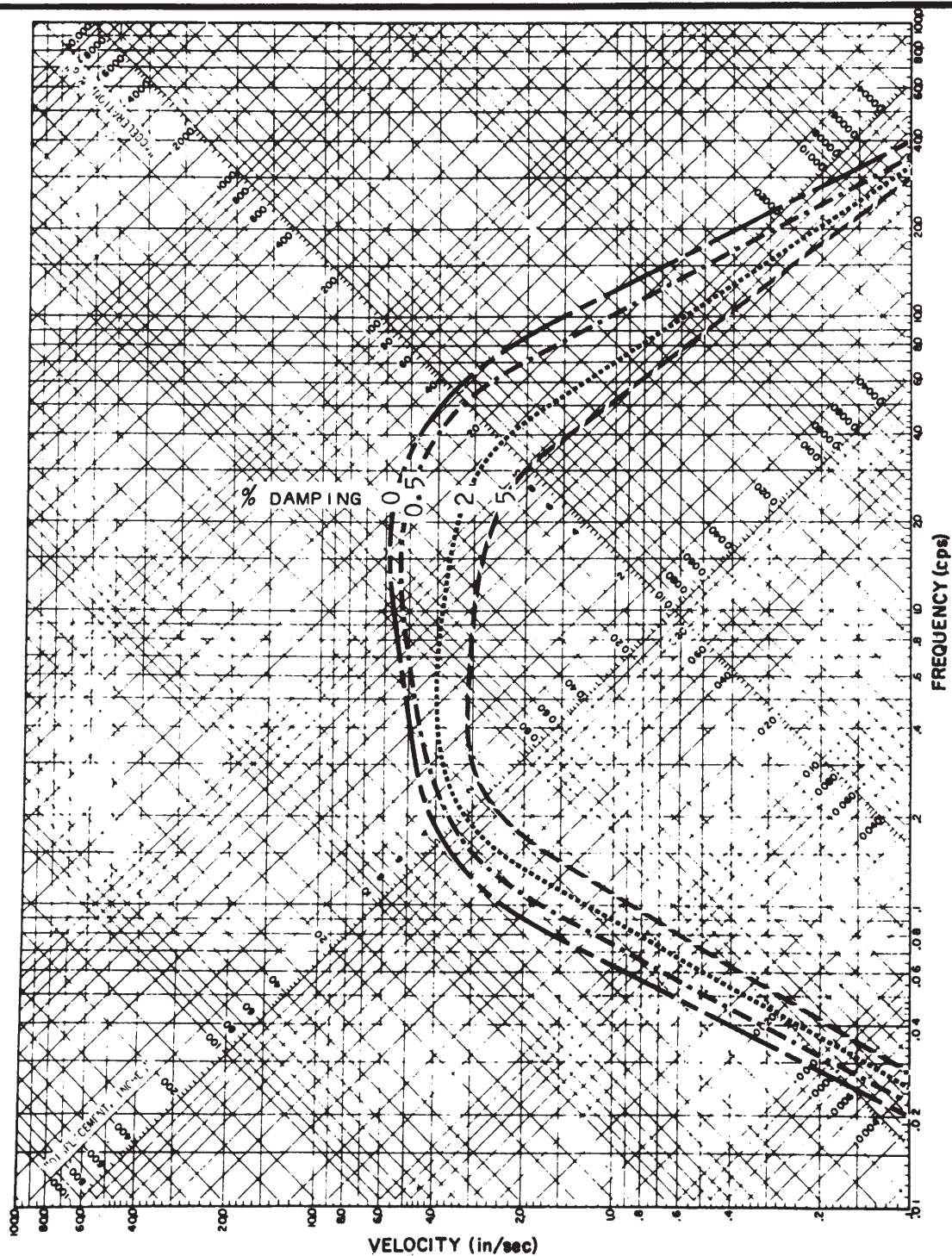


PHILADELPHIA ELECTRIC COMPANY  
PEACH BOTTOM ATOMIC POWER STATION  
UNITS 2 AND 3  
UPDATED FINAL SAFETY ANALYSIS REPORT

EMERGENCY HEAT  
SINK FACILITY

FIGURE C.2.1



**RESPONSE SPECTRA  
(DESIGN EARTHQUAKE)**

**PHILADELPHIA ELECTRIC COMPANY  
PEACH BOTTOM ATOMIC POWER STATION  
UNITS 2 AND 3  
UPDATED FINAL SAFETY ANALYSIS REPORT**

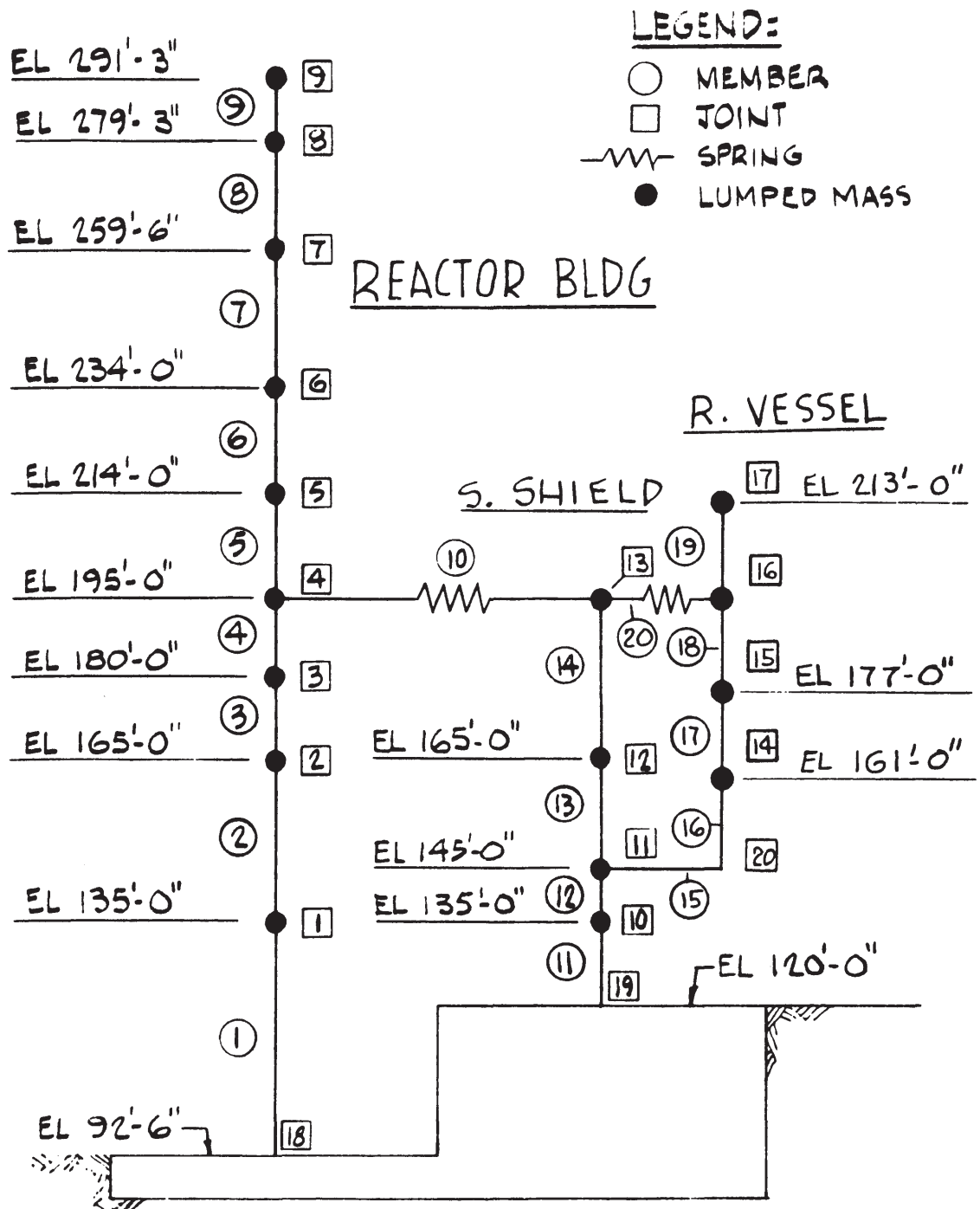
**RESPONSE SPECTRA  
(DESIGN EARTHQUAKE)**

**FIGURE C.3.1**



RESPONSE SPECTRA  
(MAXIMUM CREDIBLE EARTHQUAKE)

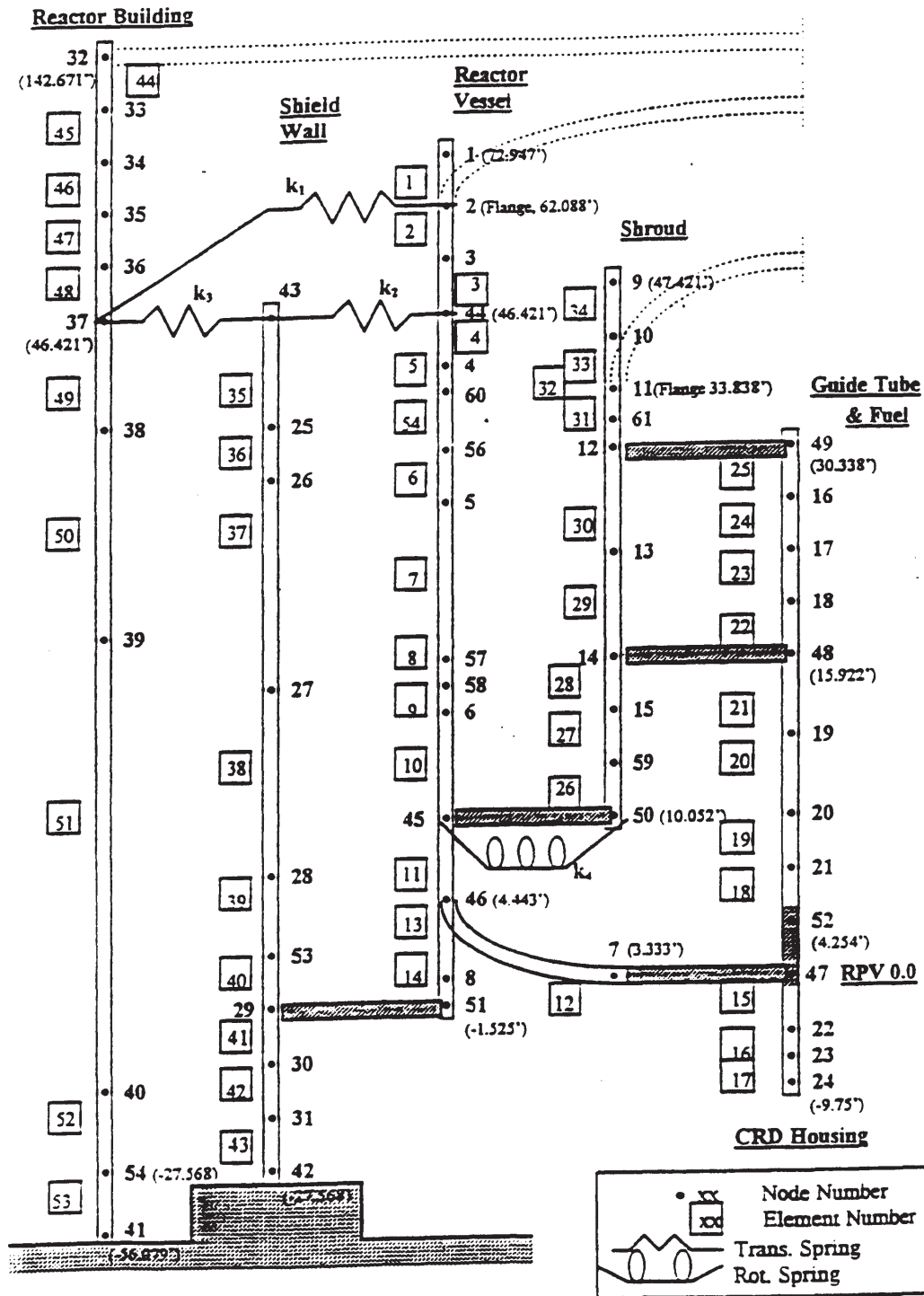
**FIGURE C.3.2**



PHILADELPHIA ELECTRIC COMPANY  
 PEACH BOTTOM ATOMIC POWER STATION  
 UNITS 2 AND 3  
 UPDATED FINAL SAFETY ANALYSIS REPORT

REACTOR BUILDING  
 MATHEMATICAL MODEL

FIGURE C.3.3

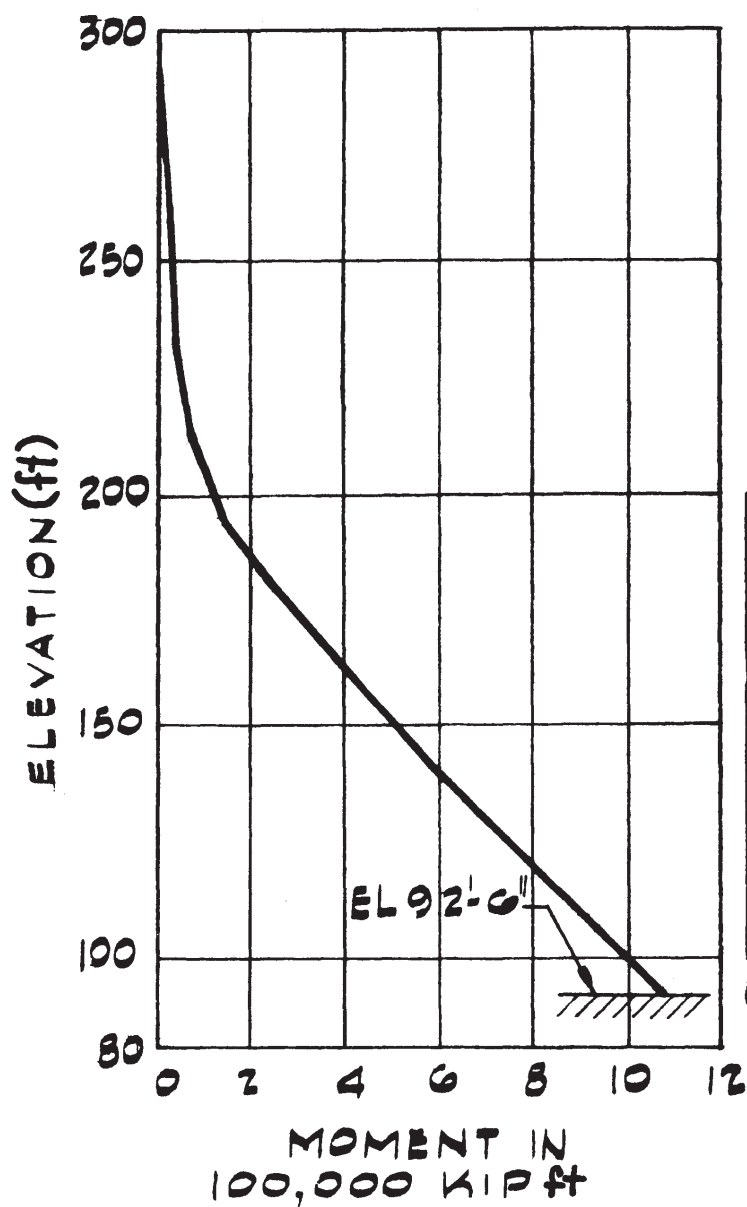


PECO ENERGY COMPANY  
PEACH BOTTOM ATOMIC POWER STATION  
UNITS 2 AND 3  
UPDATED FINAL SAFETY ANALYSIS REPORT

PRIMARY STRUCTURE MODEL FOR 1997 RE-ANALYSIS OF  
RECIRCULATION SYSTEM PIPING, RHR PIPING, & RWC PIPING  
INSIDE PRIMARY CONTAINMENT

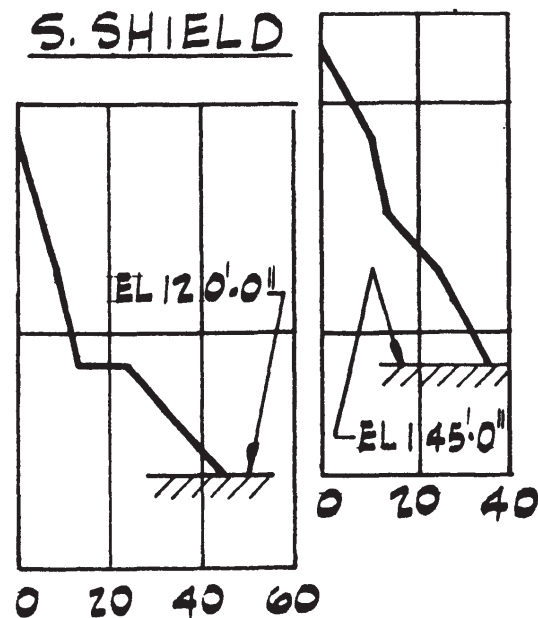
FIGURE C.3.3A

Rev. 17 04/00



**R. VESSEL**

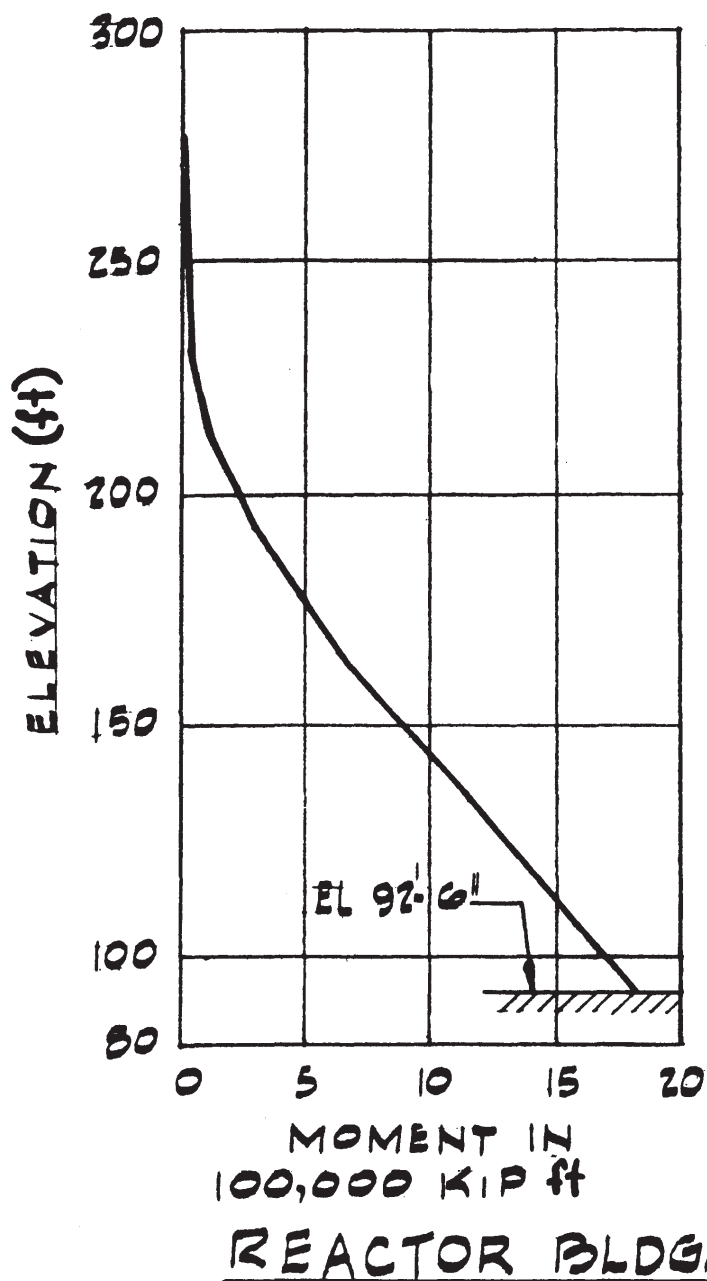
**S. SHIELD**



PHILADELPHIA ELECTRIC COMPANY  
PEACH BOTTOM ATOMIC POWER STATION  
UNITS 2 AND 3  
UPDATED FINAL SAFETY ANALYSIS REPORT

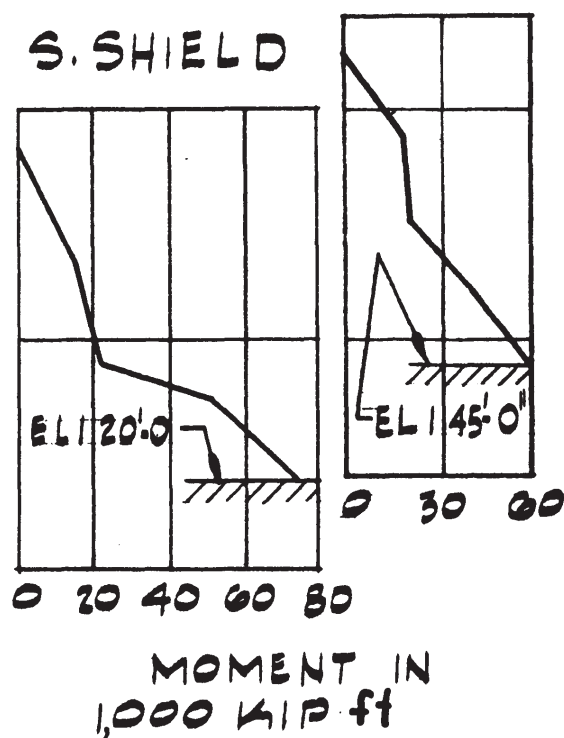
REACTOR BUILDING  
DESIGN EARTHQUAKE  
MAXIMUM MOMENTS

FIGURE C.3.4



**S. SHIELD**

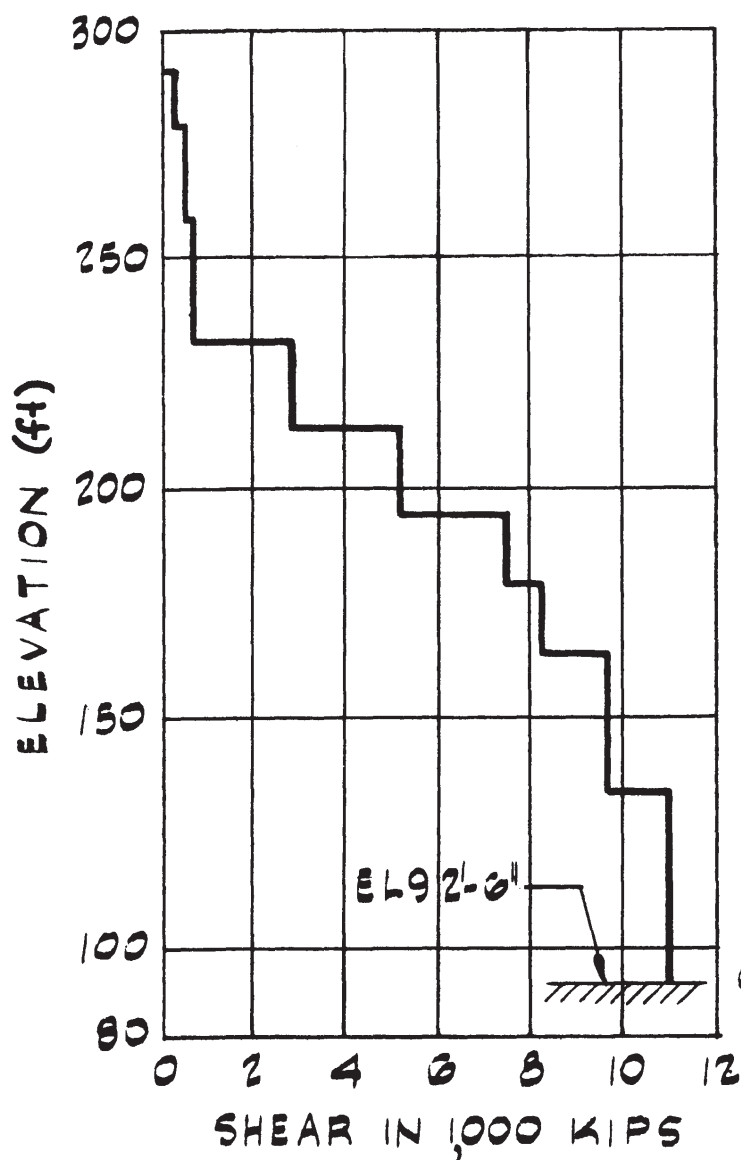
**R. VESSEL**



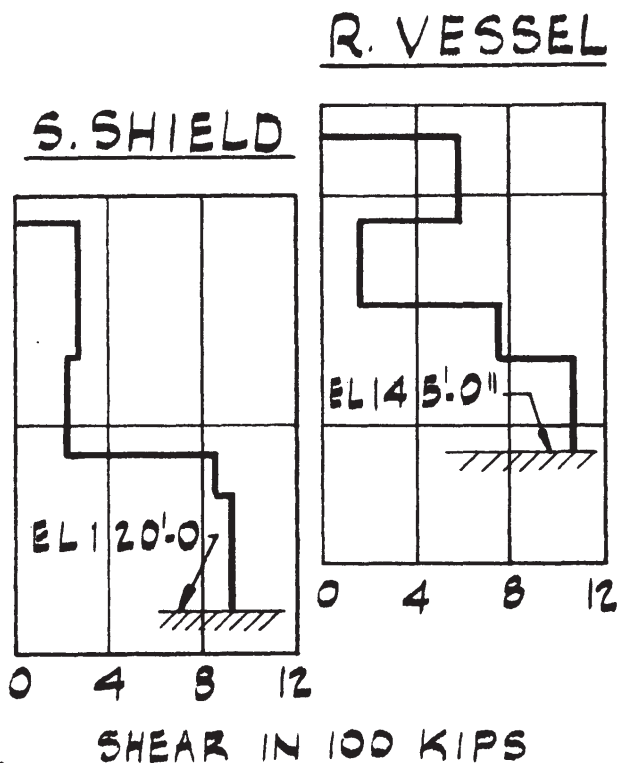
PHILADELPHIA ELECTRIC COMPANY  
PEACH BOTTOM ATOMIC POWER STATION  
UNITS 2 AND 3  
UPDATED FINAL SAFETY ANALYSIS REPORT

REACTOR BUILDING  
MAXIMUM CREDIBLE EARTHQUAKE  
MAXIMUM MOMENTS

FIGURE C.3.5



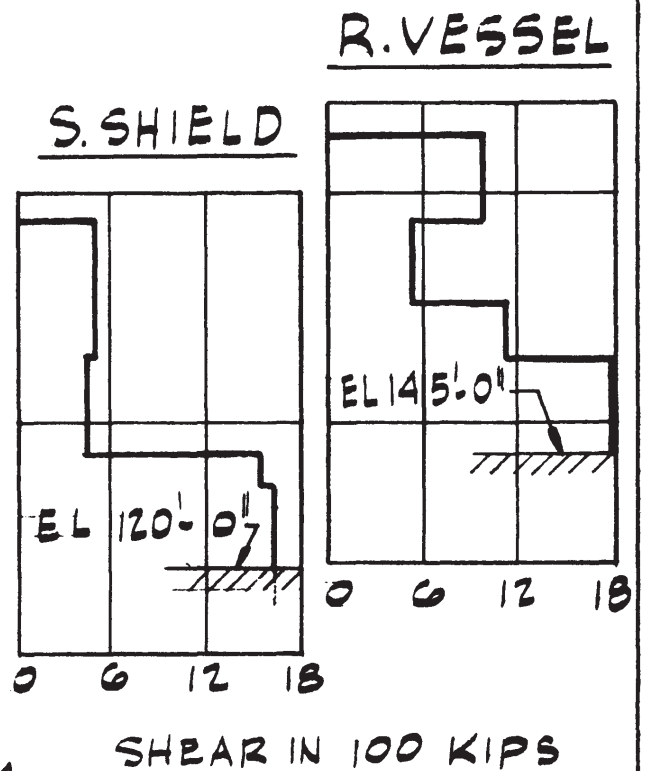
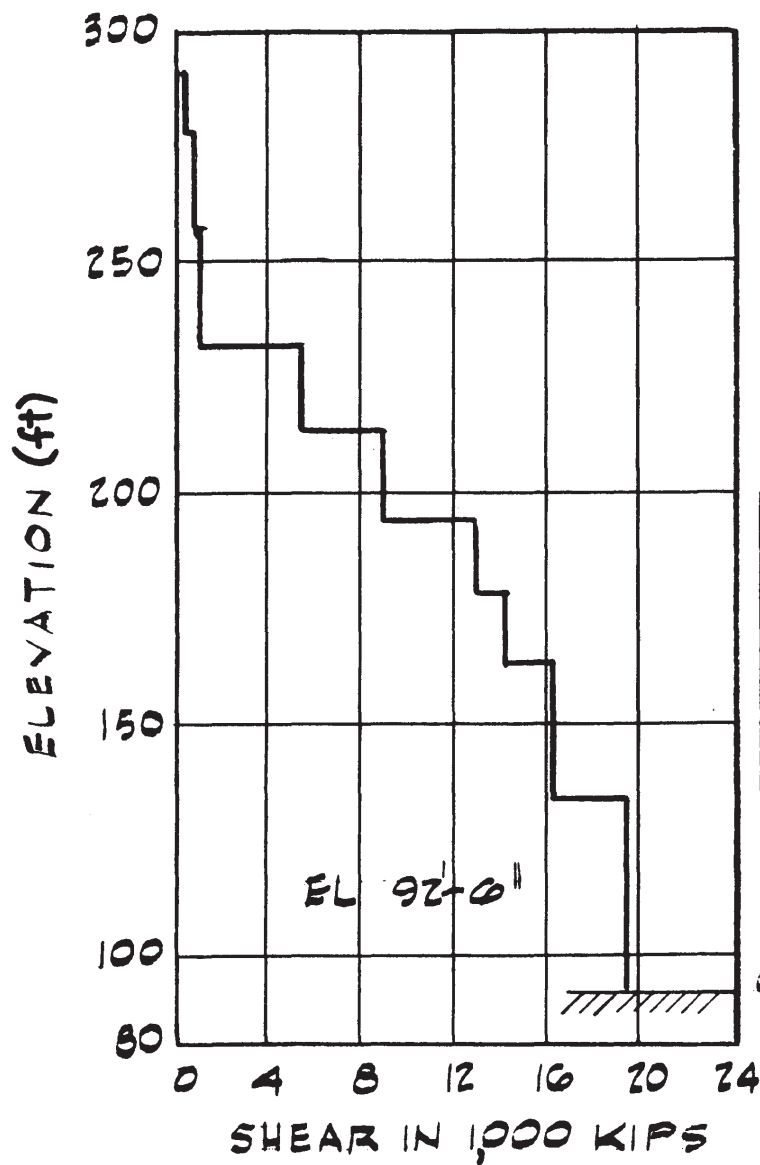
REACTOR BLDG



PHILADELPHIA ELECTRIC COMPANY  
PEACH BOTTOM ATOMIC POWER STATION  
UNITS 2 AND 3  
UPDATED FINAL SAFETY ANALYSIS REPORT

REACTOR BUILDING  
DESIGN EARTHQUAKE  
MAXIMUM SHEAR

FIGURE C.3.6

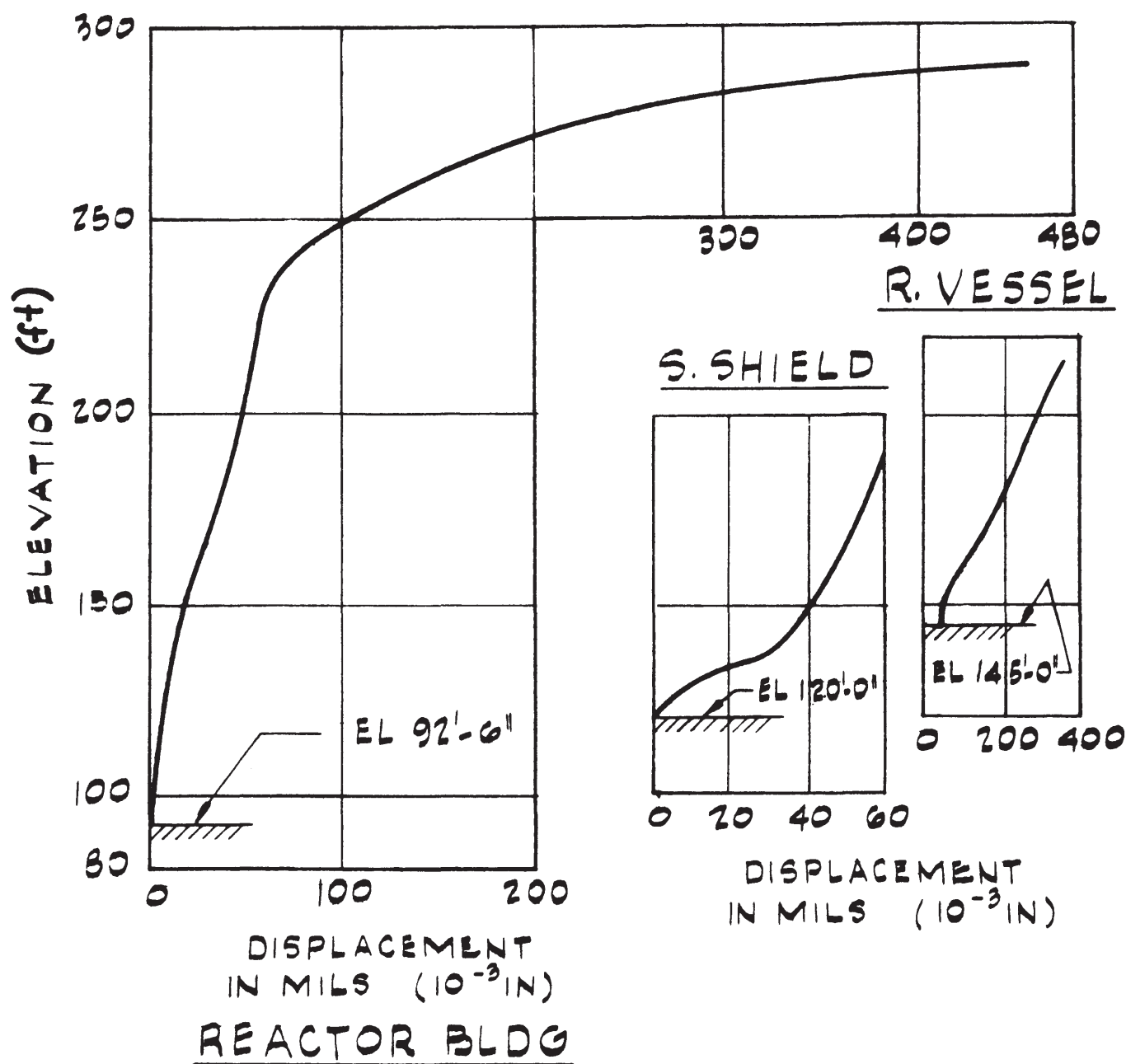


REACTOR BLDG

PHILADELPHIA ELECTRIC COMPANY  
PEACH BOTTOM ATOMIC POWER STATION  
UNITS 2 AND 3  
UPDATED FINAL SAFETY ANALYSIS REPORT

REACTOR BUILDING  
MAXIMUM CREDIBLE EARTHQUAKE  
MAXIMUM SHEAR

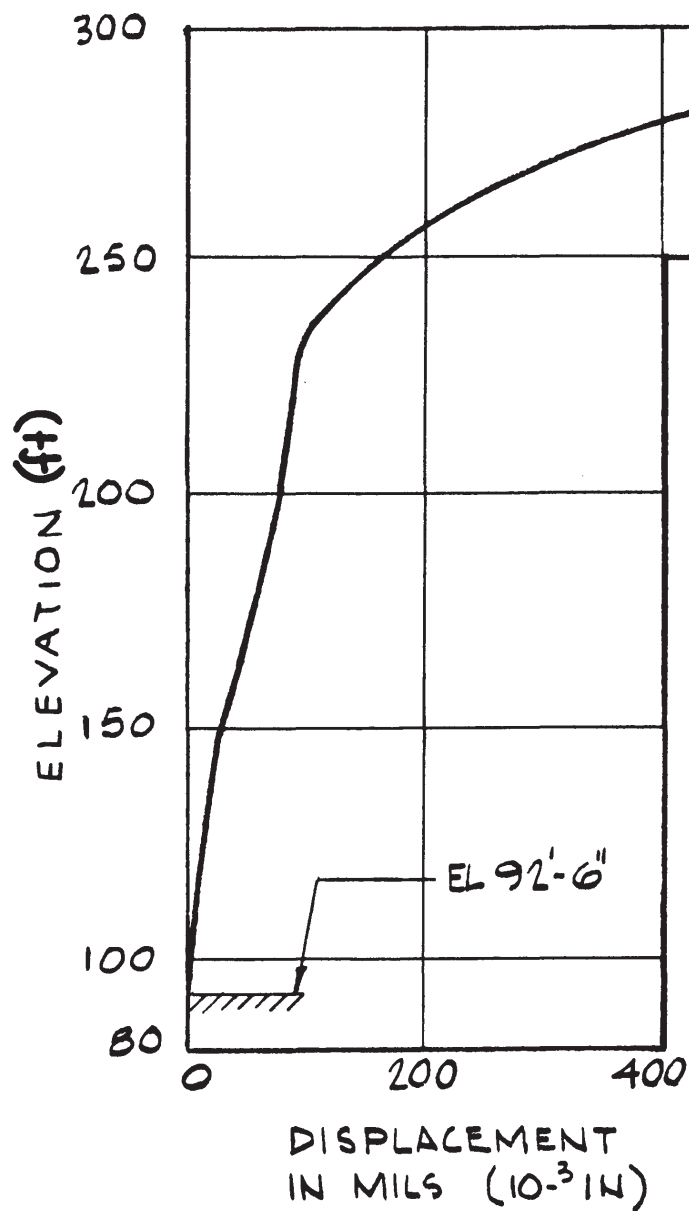
FIGURE C.3.7



PHILADELPHIA ELECTRIC COMPANY  
PEACH BOTTOM ATOMIC POWER STATION  
UNITS 2 AND 3  
UPDATED FINAL SAFETY ANALYSIS REPORT

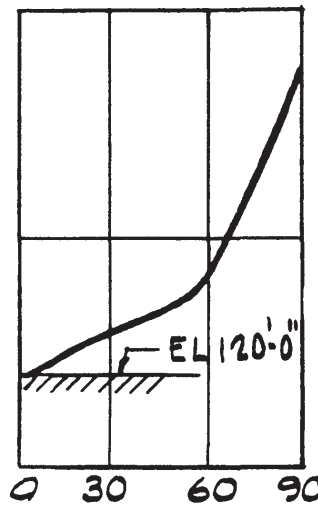
REACTOR BUILDING  
DESIGN EARTHQUAKE  
MAXIMUM DISPLACEMENTS

FIGURE C.3.8

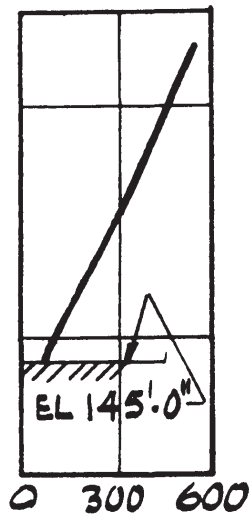


REACTOR BLDG

S. SHIELD



DISPLACEMENT  
IN MILS ( $10^{-3}$  IN)

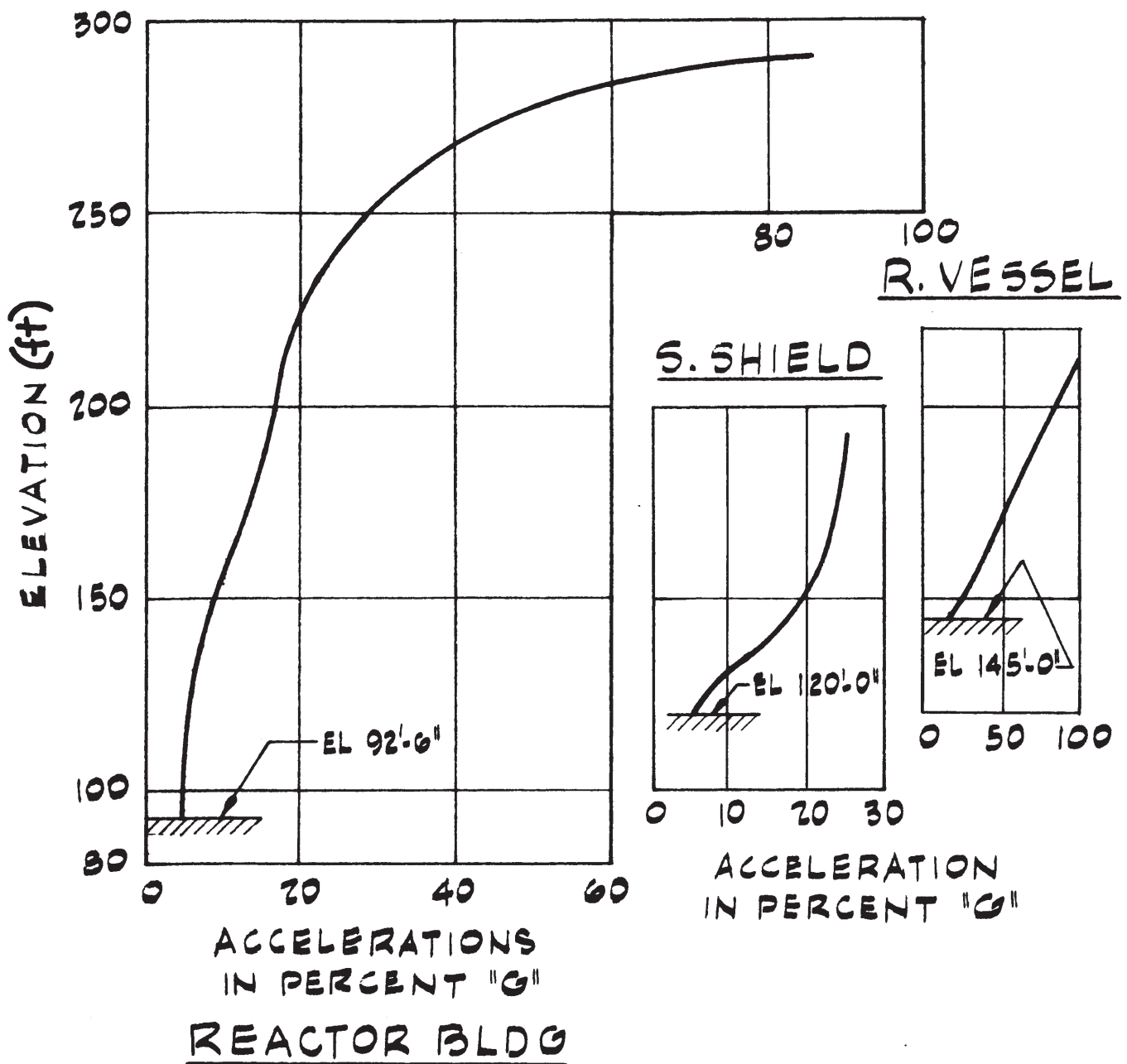


R. VESSEL

PHILADELPHIA ELECTRIC COMPANY  
PEACH BOTTOM ATOMIC POWER STATION  
UNITS 2 AND 3  
UPDATED FINAL SAFETY ANALYSIS REPORT

REACTOR BUILDING  
MAXIMUM CREDIBLE EARTHQUAKE  
MAXIMUM DISPLACEMENTS

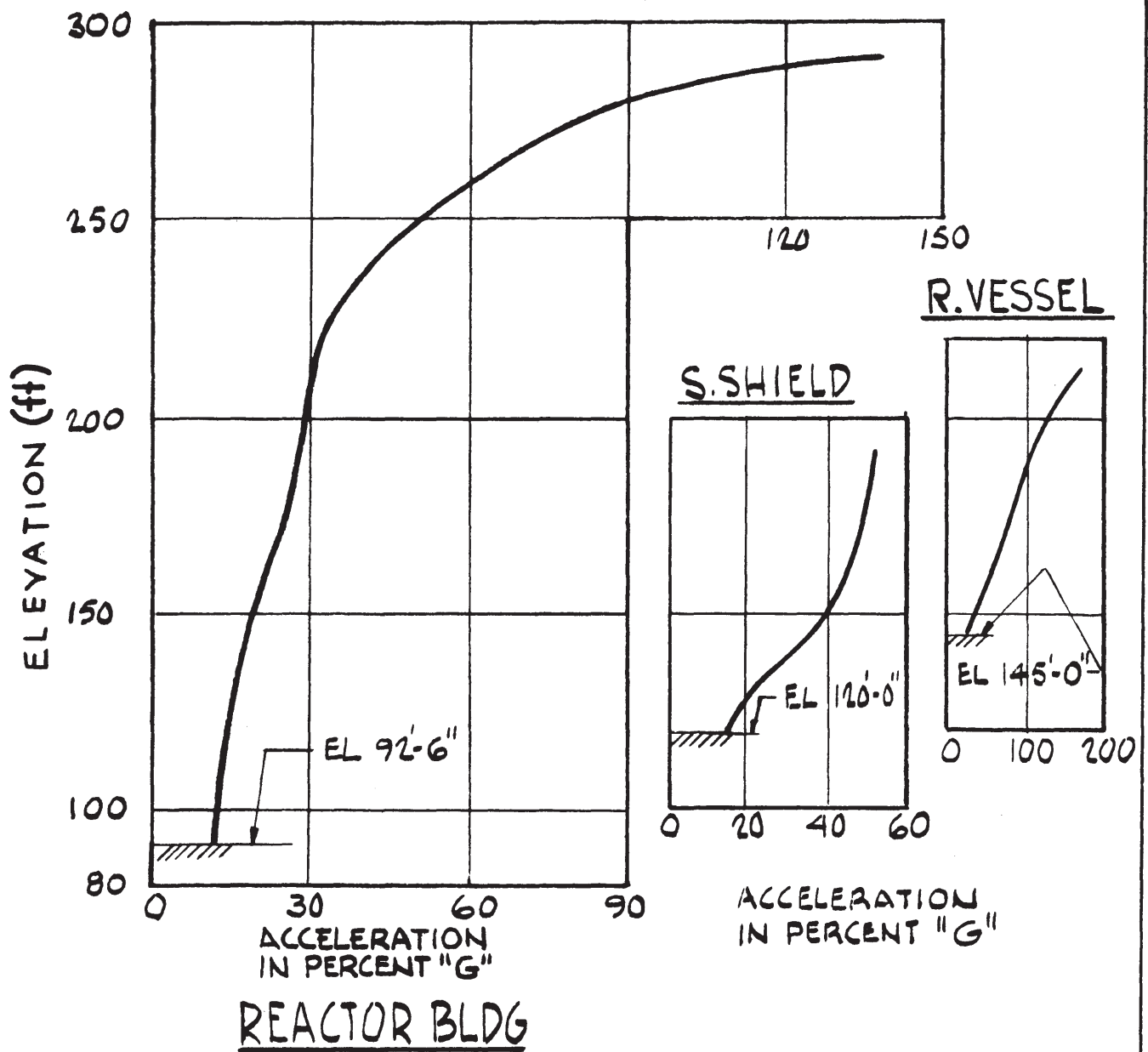
FIGURE C.3.9



PHILADELPHIA ELECTRIC COMPANY  
 PEACH BOTTOM ATOMIC POWER STATION  
 UNITS 2 AND 3  
 UPDATED FINAL SAFETY ANALYSIS REPORT

REACTOR BUILDING  
 DESIGN EARTHQUAKE  
 MAXIMUM ACCELERATIONS

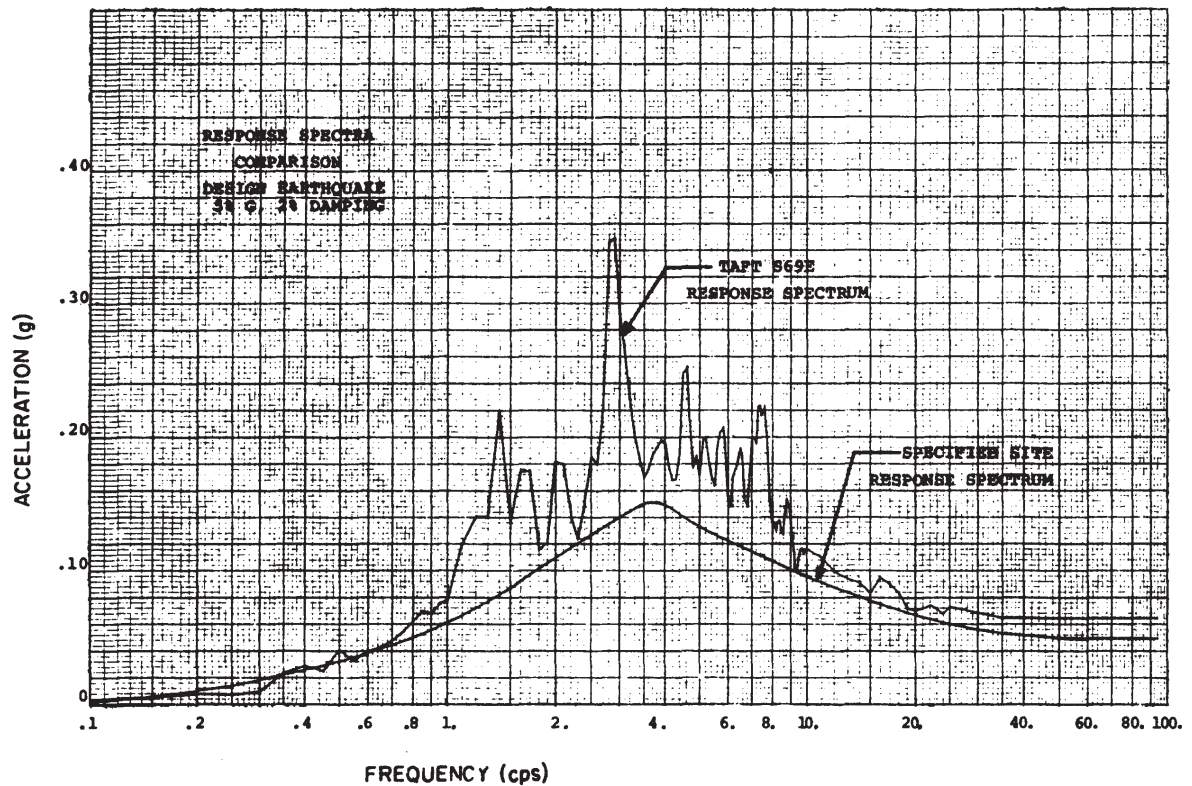
FIGURE C.3.10



PHILADELPHIA ELECTRIC COMPANY  
PEACH BOTTOM ATOMIC POWER STATION  
UNITS 2 AND 3  
UPDATED FINAL SAFETY ANALYSIS REPORT

REACTOR BUILDING  
MAXIMUM CREDIBLE EARTHQUAKE  
MAXIMUM ACCELERATIONS

FIGURE C.3.11



**Note: Figure C.3.12 is not applicable to Main Steam Line Piping Inside Containment.  
For MSL Inside Containment, See Figure C.3.12J, C.3.12K and C.3.12L.**

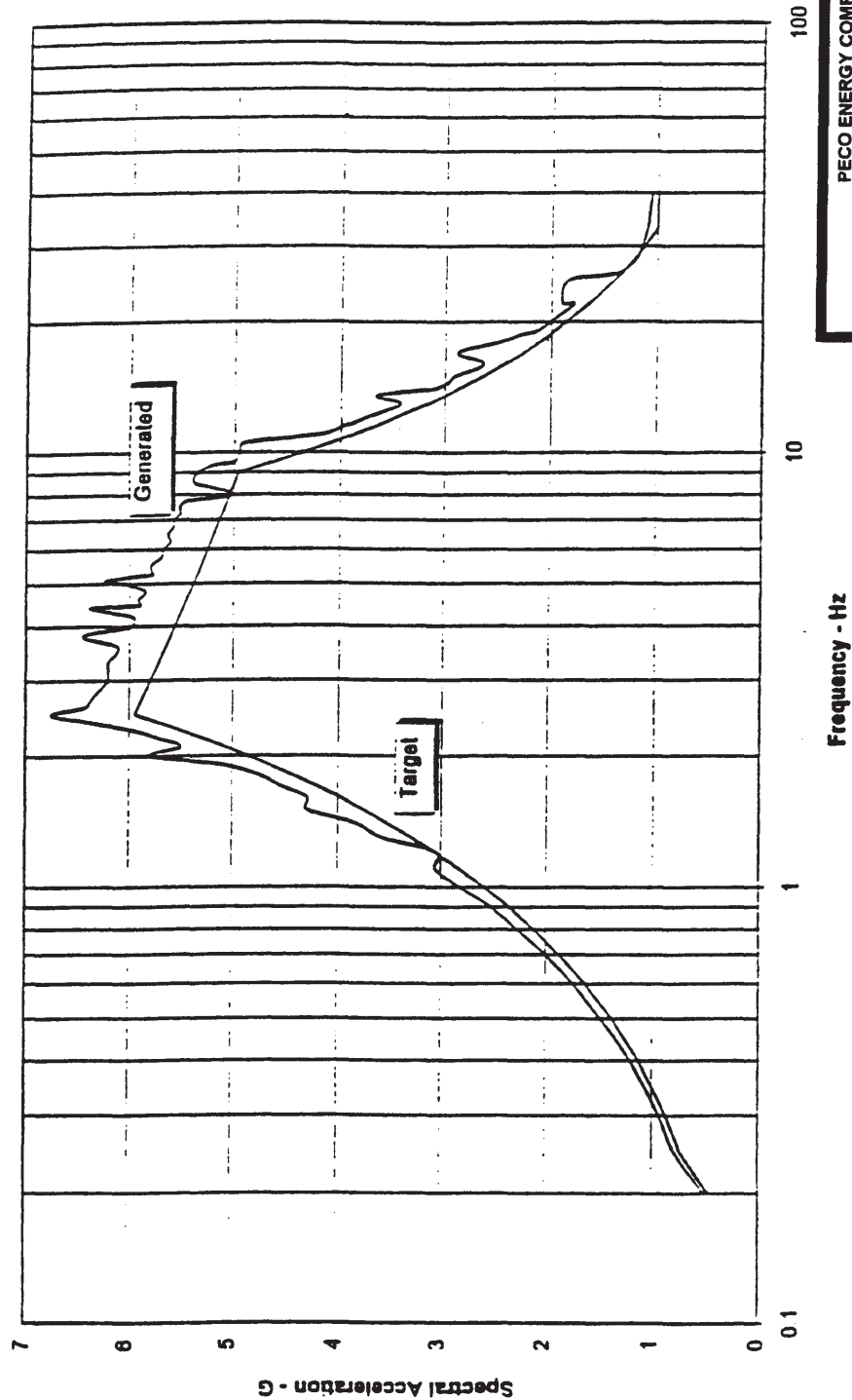
PHILADELPHIA ELECTRIC COMPANY  
PEACH BOTTOM ATOMIC POWER STATION  
UNITS 2 AND 3  
UPDATED FINAL SAFETY ANALYSIS REPORT

RESPONSE SPECTRA  
COMPARISON, DESIGN EARTHQUAKE  
5 % g, 2 % DAMPING

FIGURE C.3.12 REV 25, APRIL 2015

PBAPS  
UFSAR

Peach Bottom - N-S Spectrum at 0.5% Damping

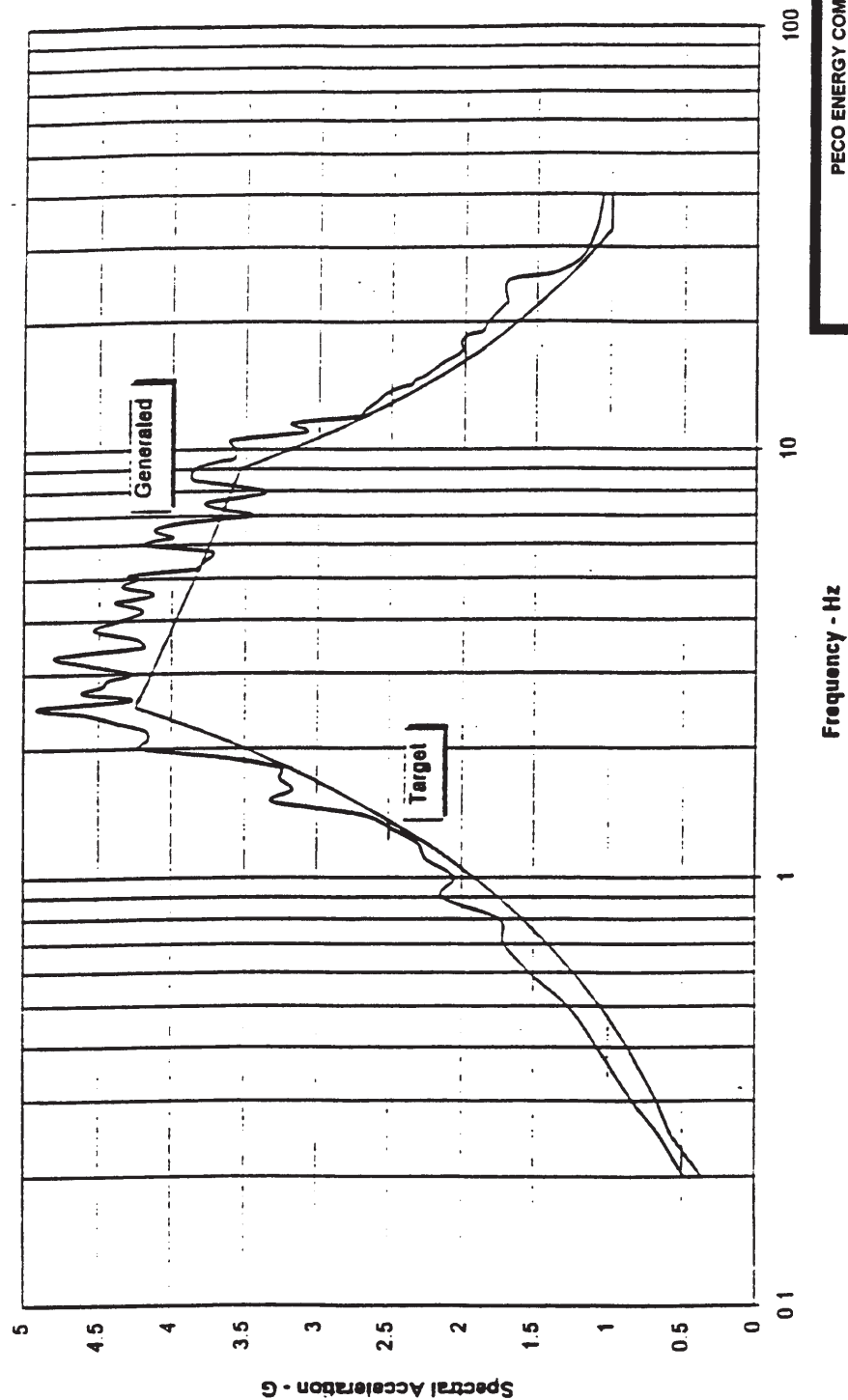


PECO ENERGY COMPANY  
PEACH BOTTOM ATOMIC POWER STATION  
UNITS 2 AND 3  
UPDATED FINAL SAFETY ANALYSIS REPORT

REGULATORY GUIDE 1.60 FREE-FIELD  
RESPONSE SPECTRA FROM SYNTHETIC  
ACCELERATION TIME HISTORY  
- N/S, 0.5% DAMPING, ZPA = 1.0g

PBAPS  
UFSAR

Peach Bottom - N-S Spectrum at 2.0% Damping



Frequency - Hz

PECO ENERGY COMPANY  
PEACH BOTTOM ATOMIC POWER STATION  
UNITS 2 AND 3  
UPDATED FINAL SAFETY ANALYSIS REPORT

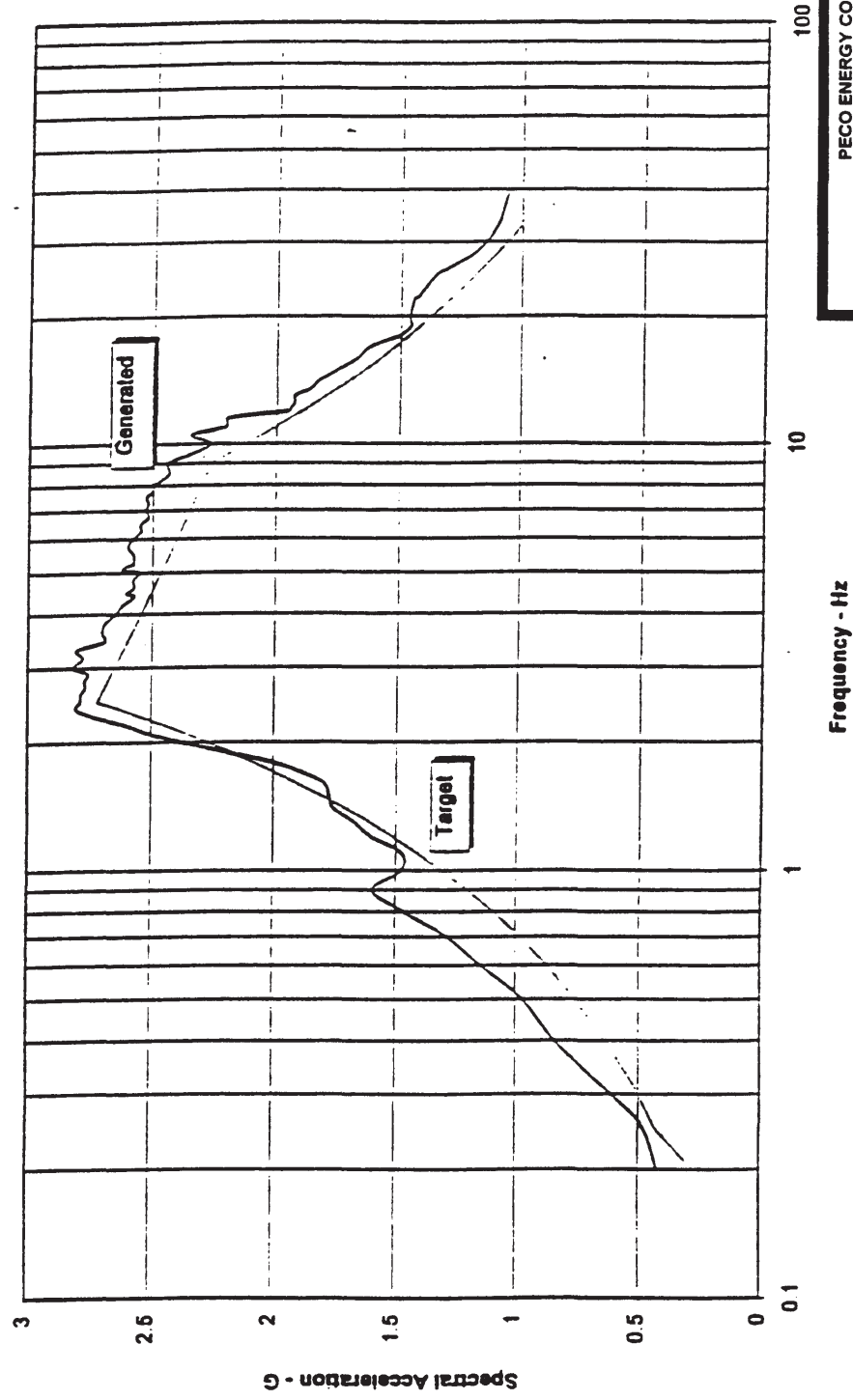
REGULATORY GUIDE 1.60 FREE-FIELD  
RESPONSE SPECTRA FROM SYNTHETIC  
ACCELERATION TIME HISTORY  
- N/S, 2.0% DAMPING, ZPA = 1.0g

FIGURE C.3.12B

Rev. 17 04/00

PBAPS  
UFSAR

Peach Bottom - N-S Spectrum at 7.0% Damping

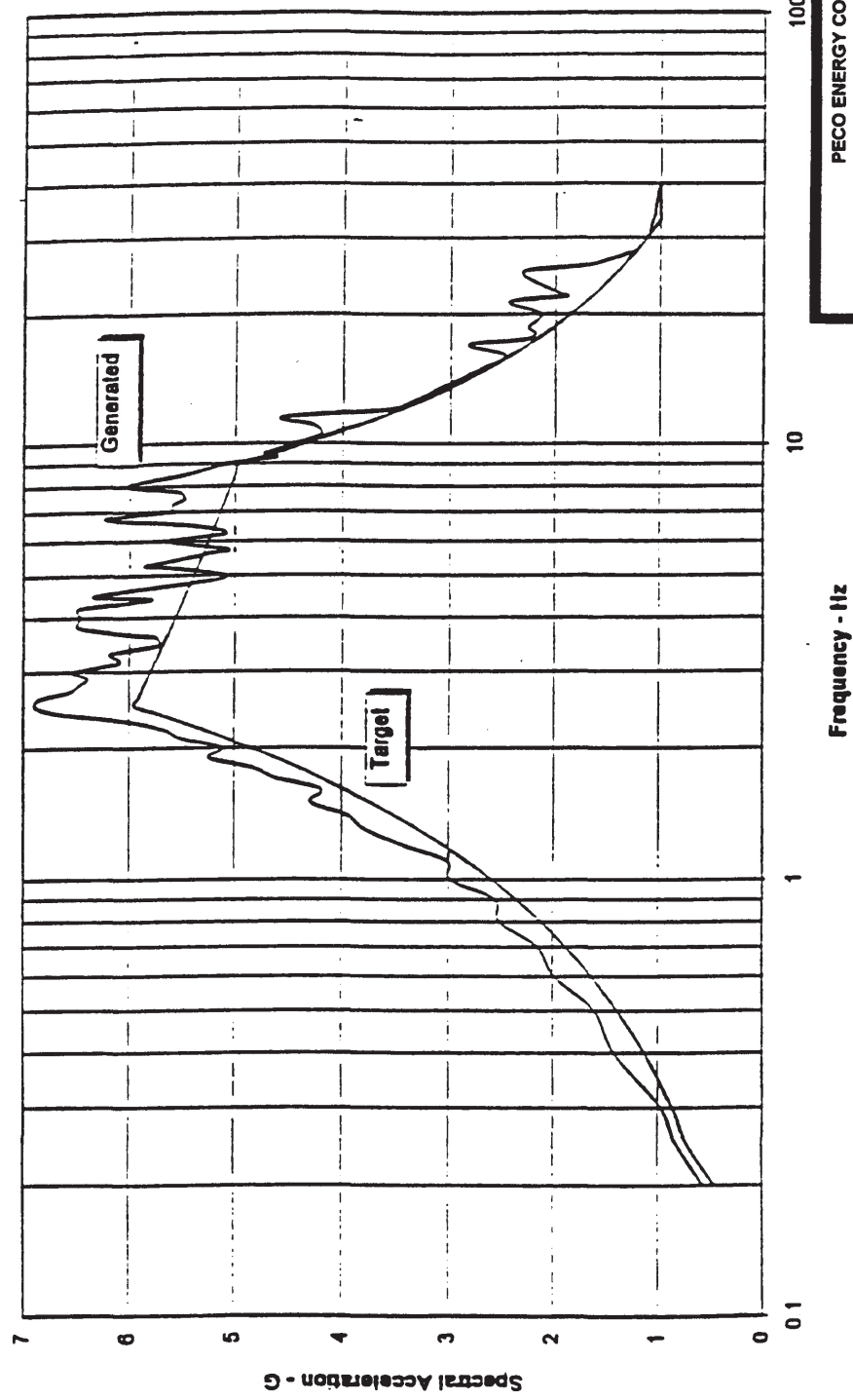


PECO ENERGY COMPANY  
PEACH BOTTOM ATOMIC POWER STATION  
UNITS 2 AND 3  
UPDATED FINAL SAFETY ANALYSIS REPORT

REGULATORY GUIDE 1.60 FREE-FIELD  
RESPONSE SPECTRA FROM SYNTHETIC  
ACCELERATION TIME HISTORY  
- N/S, 7.0% DAMPING, ZPA = 1.0g

PBAPS  
UFSAR

Peach Bottom - E-W Spectrum at 0.5% Damping



PECO ENERGY COMPANY  
PEACH BOTTOM ATOMIC POWER STATION  
UNITS 2 AND 3  
UPDATED FINAL SAFETY ANALYSIS REPORT

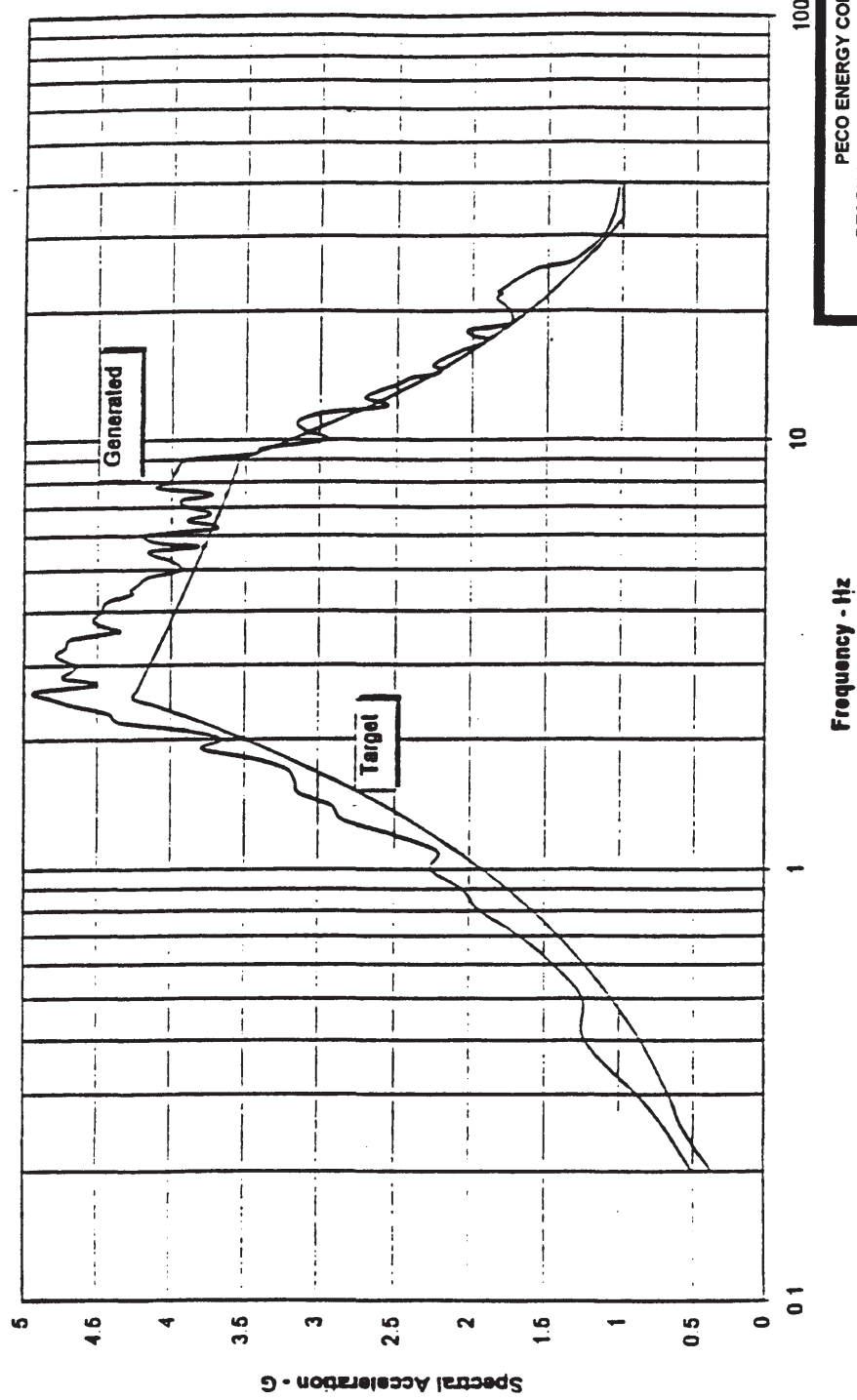
REGULATORY GUIDE 1.60 FREE-FIELD  
RESPONSE SPECTRA FROM SYNTHETIC  
ACCELERATION TIME HISTORY  
- EW, 0.5% DAMPING, ZPA = 1.0g

FIGURE C.3.12D

Rev. 17 04/00

PBAPS  
UFSAR

Peach Bottom - E-W Spectrum at 2.0% Damping



PECO ENERGY COMPANY  
PEACH BOTTOM ATOMIC POWER STATION  
UNITS 2 AND 3  
UPDATED FINAL SAFETY ANALYSIS REPORT

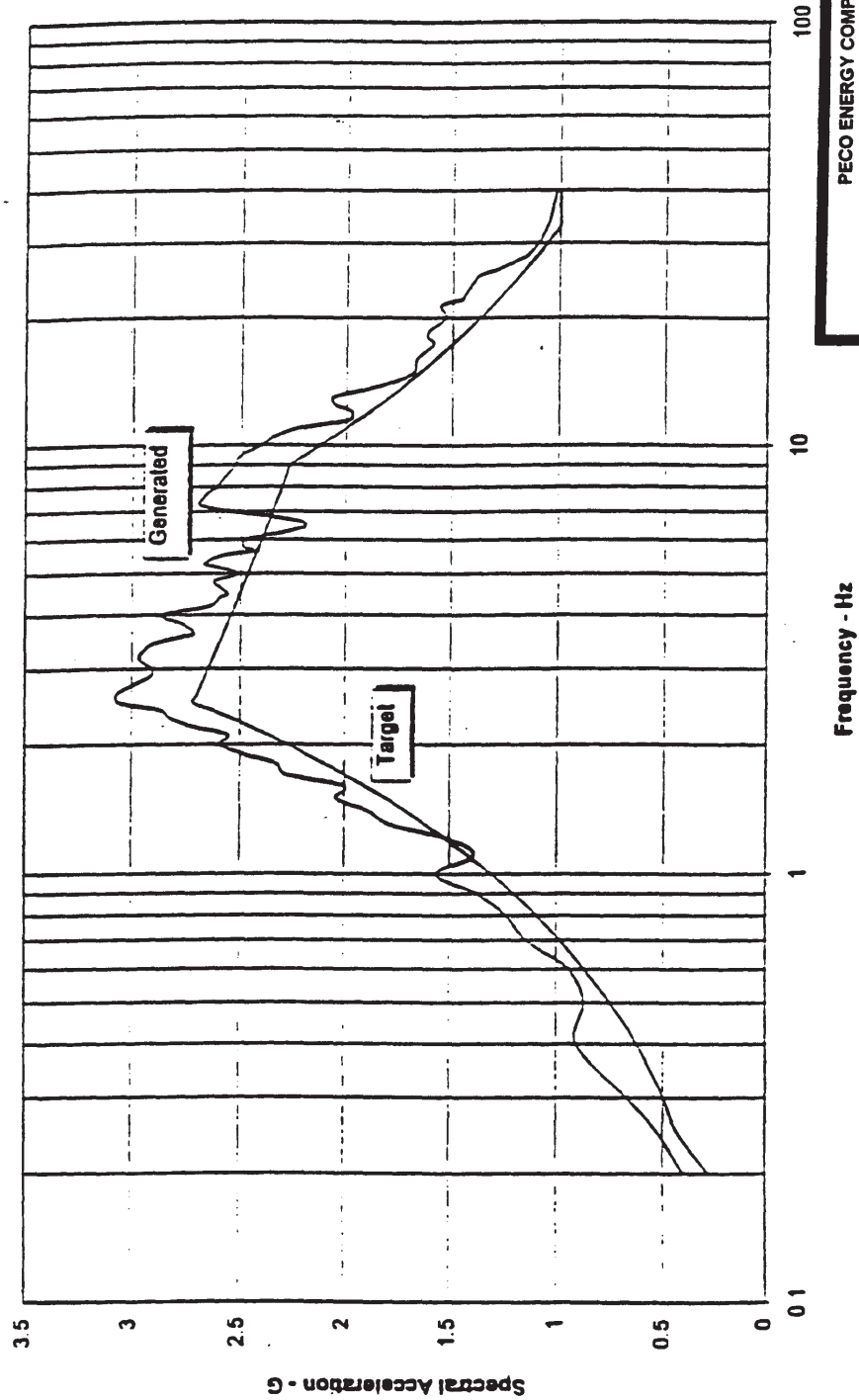
REGULATORY GUIDE 1.60 FREE-FIELD  
RESPONSE SPECTRA FROM SYNTHETIC  
ACCELERATION TIME HISTORY  
- EW, 2.0% DAMPING, ZPA = 1.0g

FIGURE C.3.12E

Rev. 17 04/00

PBAPS  
UFSAR

Peach Bottom - E-W Spectrum at 7.0% Damping



PECO ENERGY COMPANY  
PEACH BOTTOM ATOMIC POWER STATION  
UNITS 2 AND 3  
UPDATED FINAL SAFETY ANALYSIS REPORT

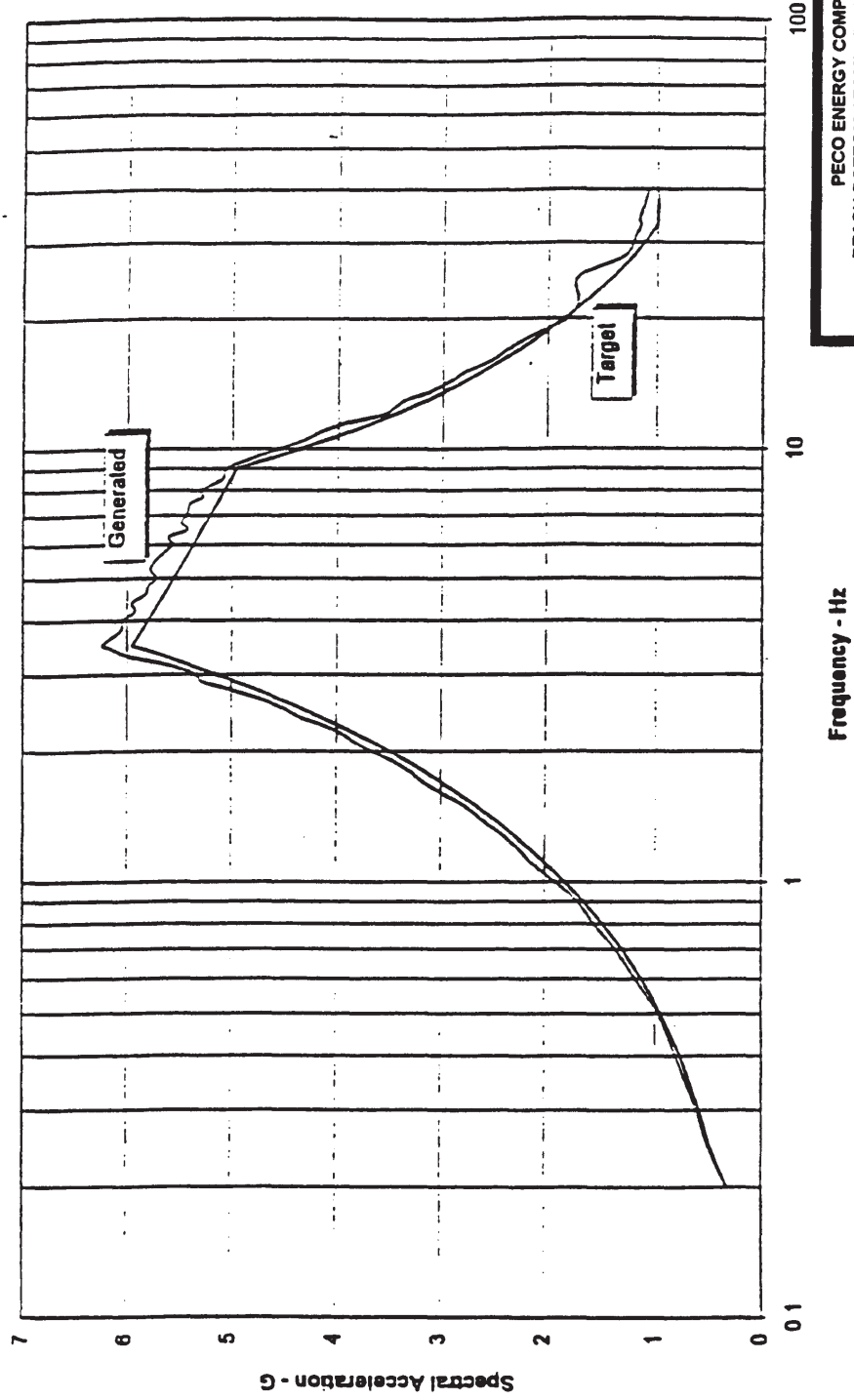
REGULATORY GUIDE 1.60 FREE-FIELD  
RESPONSE SPECTRA FROM SYNTHETIC  
ACCELERATION TIME HISTORY  
- EW, 7.0% DAMPING, ZPA = 1.0g

FIGURE C.3.12F

Rev. 17 04/00

PBAPS  
UFSAR

Peach Bottom - Vertical Spectrum at 0.5% Damping

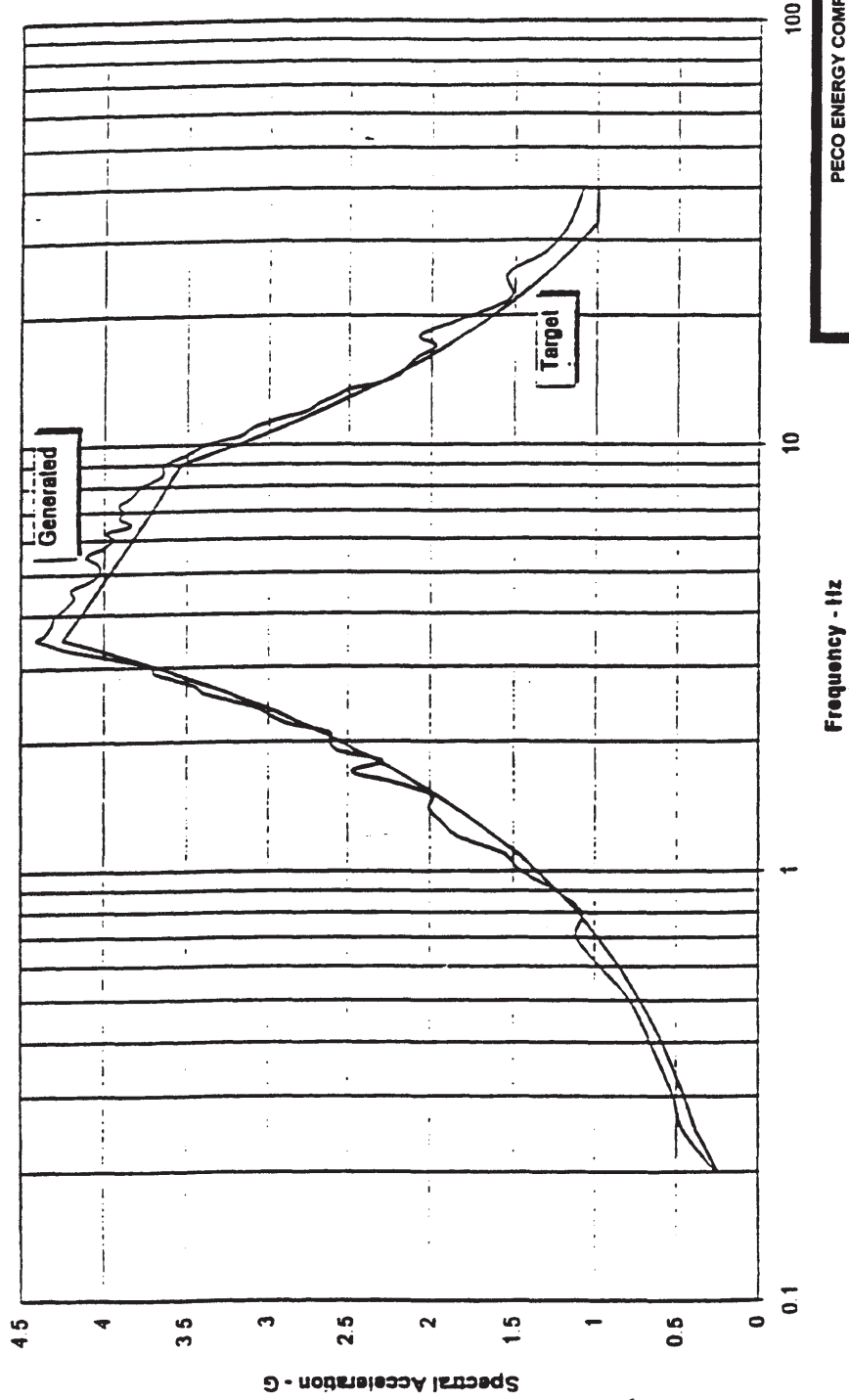


PECO ENERGY COMPANY  
PEACH BOTTOM ATOMIC POWER STATION  
UNITS 2 AND 3  
UPDATED FINAL SAFETY ANALYSIS REPORT

REGULATORY GUIDE 1.60 FREE-FIELD  
RESPONSE SPECTRA FROM SYNTHETIC  
ACCELERATION TIME HISTORY  
- Vert., 0.5% DAMPING, ZPA = 1.0g

PBAPS  
UFSAR

Peach Bottom - Vertical Spectrum at 2.0% Damping



PECO ENERGY COMPANY  
PEACH BOTTOM ATOMIC POWER STATION  
UNITS 2 AND 3  
UPDATED FINAL SAFETY ANALYSIS REPORT

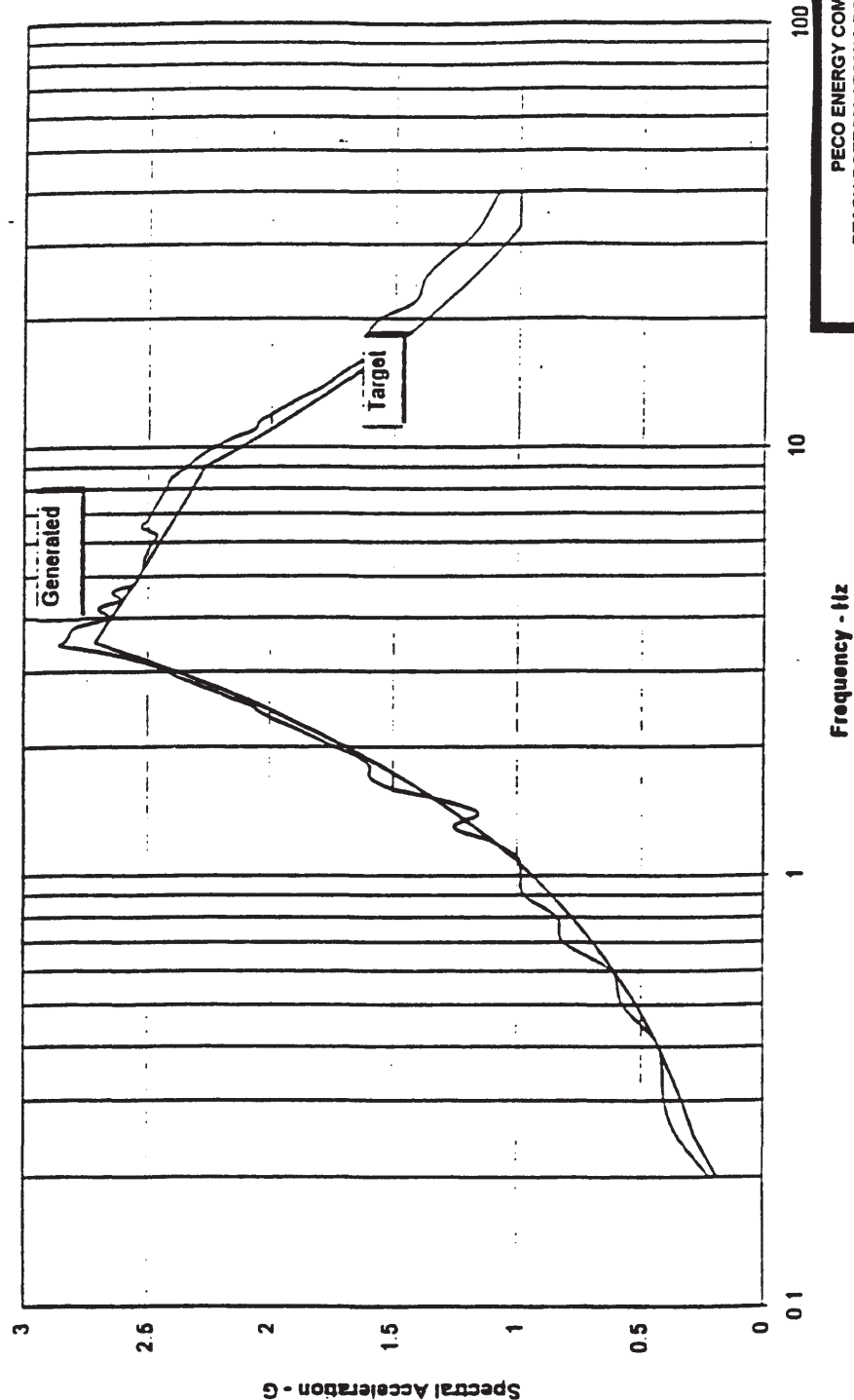
REGULATORY GUIDE 1.60 FREE-FIELD  
RESPONSE SPECTRA FROM SYNTHETIC  
ACCELERATION TIME HISTORY  
- Vert., 2.0% DAMPING, ZPA = 1.0g

FIGURE C.3.12H

Rev. 17 04/00

PBAPS  
UFSAR

Peach Bottom - Vertical Spectrum at 7.0% Damping



PECO ENERGY COMPANY  
PEACH BOTTOM ATOMIC POWER STATION  
UNITS 2 AND 3  
UPDATED FINAL SAFETY ANALYSIS REPORT

REGULATORY GUIDE 1.60 FREE-FIELD  
RESPONSE SPECTRA FROM SYNTHETIC  
ACCELERATION TIME HISTORY  
- Vert., 7.0% DAMPING, ZPA = 1.0g

FIGURE C.3.12I

Rev. 17 04/00

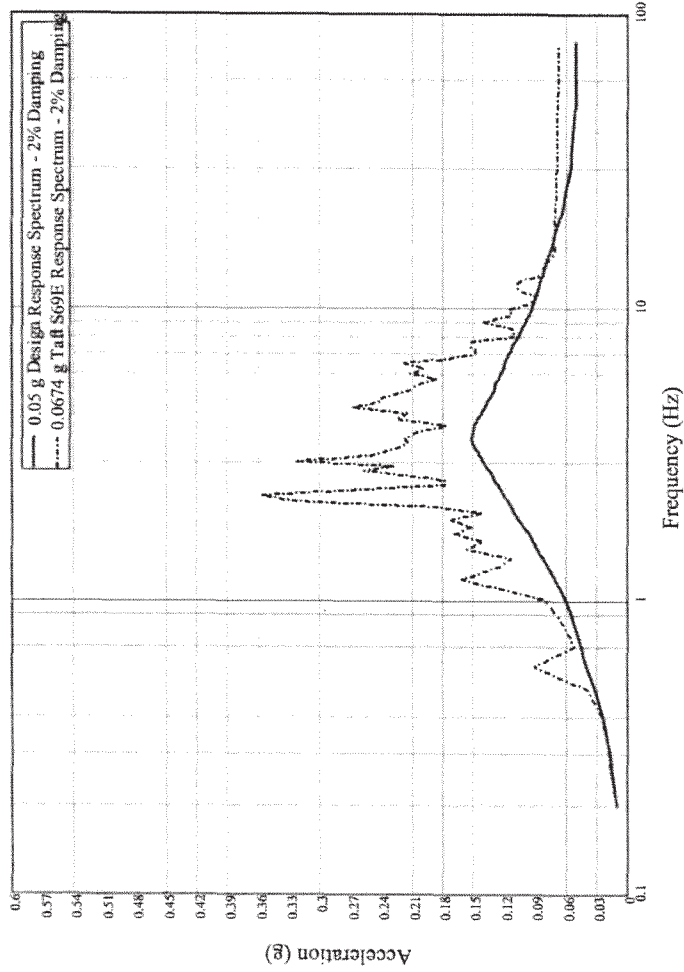


Figure C.3.12J: 2% Damped Spectral Comparison between Target DE Response Spectrum and Spectrum from Taft Time History (After Scaling)

Note: The data provided in Figure C.3.12J is applicable to Main Steam Line Piping Inside Containment analyses only.

PEACH BOTTOM ATOMIC POWER STATION UPDATED FINAL SAFETY ANALYSIS REPORT UNITS 2 AND 3
2% DAMPED SPECTRAL COMPARISON BETWEEN TARGET DE RESPONSE SPECTRUM AND SPECTRUM FROM TAFT TIME HISTORY (AFTER SCALING)
FIGURE C.3.12J      REV. 25   APRIL 2015

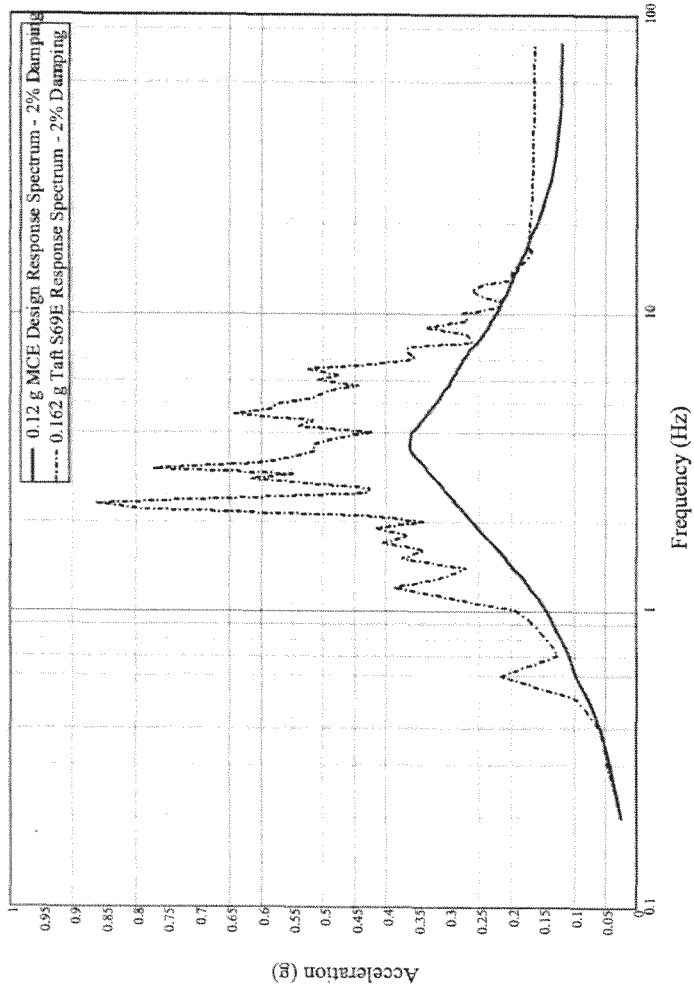


Figure C.3.12K: 2% Damped Spectral Comparison between Target MCE Response Spectrum and Spectrum from Taft Time History (After Scaling)

Note: The data provided in Figure C.3.12K is applicable to Main Steam Line Piping Inside Containment analyses only.

PEACH BOTTOM ATOMIC POWER STATION UPDATED FINAL SAFETY ANALYSIS REPORT UNITS 2 AND 3
2% DAMPED SPECTRAL COMPARISON BETWEEN TARGET MCE RESPONSE SPECTRUM AND SPECTRUM FROM TAFT TIME HISTORY (AFTER SCALING)
FIGURE C.3.12K      REV. 25   APRIL

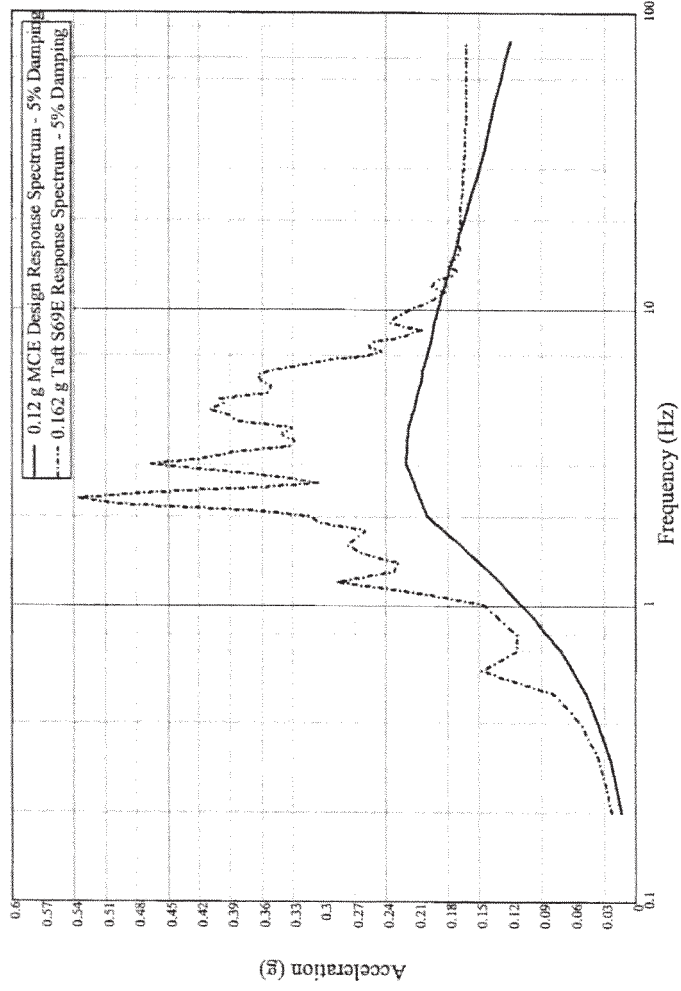


Figure C.3.12L: 5% Damped Spectral Comparison between Target MCE Response Spectrum and Spectrum from Taft Time History (After Scaling)

Note: The data provided in Figure C.3.12L is applicable to Main Steam Line Piping Inside Containment analyses only.

PEACH BOTTOM ATOMIC POWER STATION UPDATED FINAL SAFETY ANALYSIS REPORT UNITS 2 AND 3
5% DAMPED SPECTRAL COMPARISON BETWEEN TARGET MCE RESPONSE SPECTRUM AND SPECTRUM FROM TAFT TIME HISTORY (AFTER SCALING)
FIGURE C.3.12L      REV. 25   APRIL 2015