



Certificate of Calibration

Calibration and Voltage Plateau

Environmental Restoration Group, Inc.
8809 Washington St NE, Suite 150
Albuquerque, NM 87113
(505) 298-4224
www.ERGoffice.com

Meter: Manufacturer: Ludlum Model Number: 2221r Serial Number: 108859
Detector: Manufacturer: Alpha Spectra Model Number: FIDLER Serial Number: 010807B

☒ Mechanical Check ☒ THR/WIN Operation
☒ F/S Response Check ☒ Reset Check
☒ Geotropism ☒ Audio Check
☒ Meter Zeroed ☒ Battery Check (Min 4.4 VDC)

HV Check (+/- 2.5%): ☐ 500 V ☐ 1000 V ☐ 1500 V
Cable Length: ☐ 39-inch ☐ 72-inch ☒ Other: 60"

Source Distance: ☐ Contact ☐ 6 inches ☒ Other: 1/2"
Source Geometry: ☐ Side ☒ Below ☐ Other:

Threshold: 10 mV
Window:

Barometric Pressure: 24.57 inches Hg

Temperature: 77 °F

Relative Humidity: 20 %

Instrument found within tolerance: ☒ Yes ☐ No

Range/Multiplier	Reference Setting	"As Found Reading"	Meter Reading	Integrated 1-Min. Count	Log Scale Count
x 1000	400	400	400	399229	400
x 1000	100	100	100		100
x 100	400	400	400	39923	400
x 100	100	100	100		100
x 10	400	400	400	3994	400
x 10	100	100	100		100
x 1	400	400	400	399	400
x 1	100	100	100		100

High Voltage

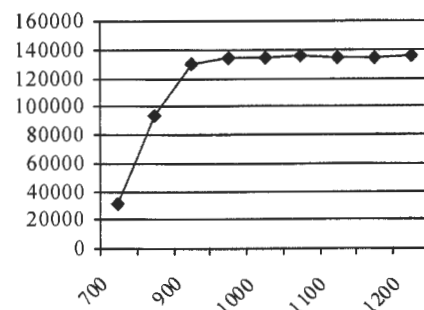
Source Counts

Background

Voltage Plateau

700 30982
800 93547
900 130639
950 134090
1000 134583
1050 135059
1100 134484
1150 134847
1200 134997

4948



Comments: HV Plateau Scaler Count Time = 0.5-min. Recommended HV = 1000

Reference Instruments and/or Sources:

Ludlum pulser serial number: ☐ 97743 ☒ 201932
☐ Alpha Source: Th-230 @ 12,800 dpm (1/4/12) sn: 4098-03
☐ Beta Source: Tc-99 @ 17,700 dpm (1/4/12) sn: 4099-03

Fluke multimeter serial number: ☐ 87490128
☐ Gamma Source: Cs-137 @ 5.2 uCi (1/4/12) sn: 4097-03
☒ Other Source: Am-241 @ 1uCi

Calibrated By:

Calibration Date: 6-8-16

Calibration Due: 6-8-17

Reviewed By:

Date: 6/8/16

ERG Form ITC. 101.A

This calibration conforms to the requirements and acceptable calibration conditions of ANSI N323.A - 1997