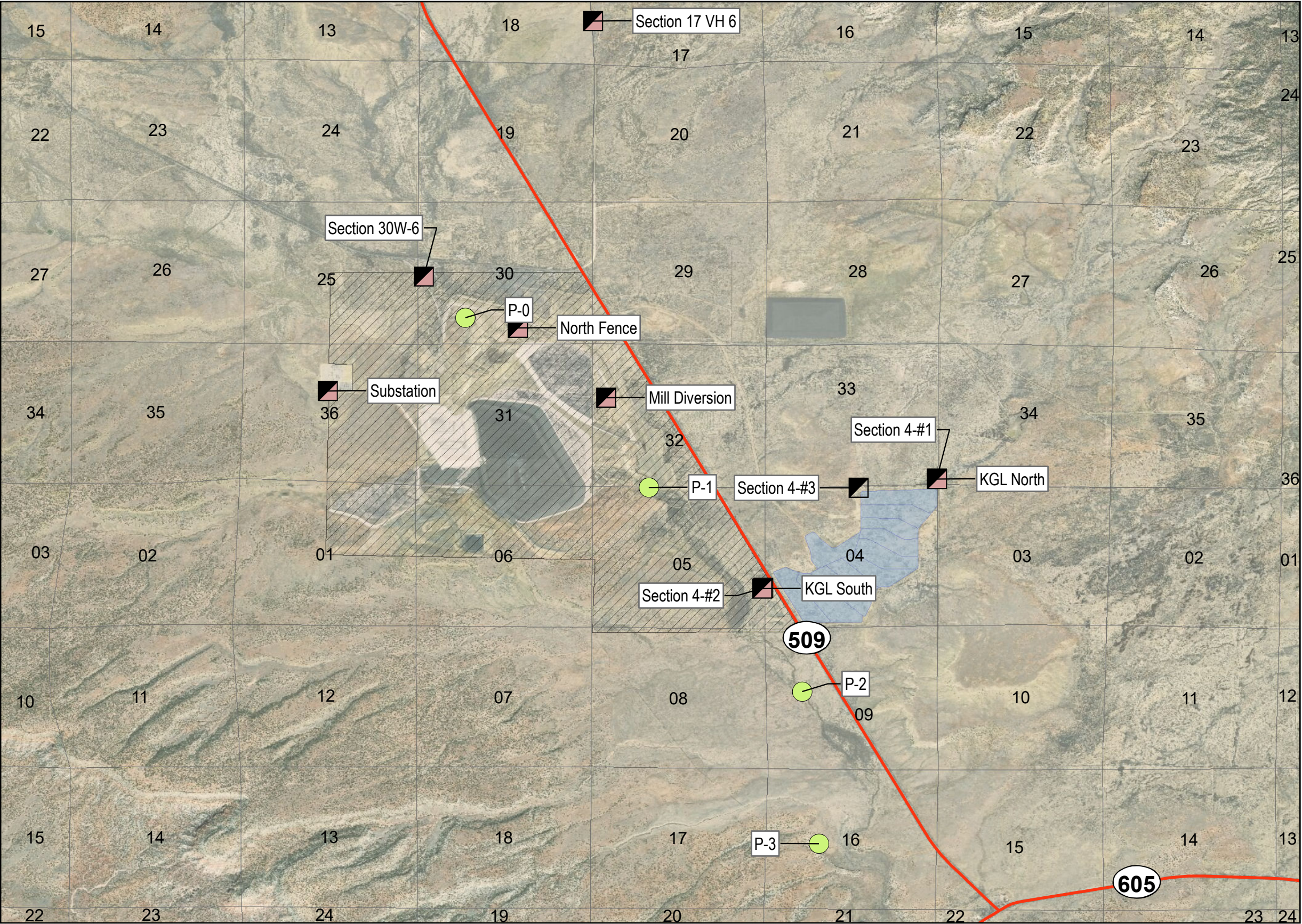


Rio Algom Mining LLC - Environmental Sampling Locations (Former & Current)



Legend

- Direct Gamma Only
- Particulate, Direct Gamma, and Radon
- Sediment
- Former Section 4 Ponds
- Section Lines
- LTSM
- State Highway

Note: The Substation location has been historically used to represent background, while the Section 17 VH 6 location has been used to represent the nearest resident.



January 18, 2019

Service Layer Credits: Source: Esri, DigitalGlobe, GeoEye, Earthstar Geographics, CNES/Airbus DS, USDA, USGS, AeroGRID, IGN, and the GIS User Community