

ENCLOSURE 4

SHINE MEDICAL TECHNOLOGIES, INC.

**MEETING SLIDES FOR THE JANUARY 29 AND 30, 2019 MEETING
BETWEEN SHINE MEDICAL TECHNOLOGIES, INC. AND THE NRC**

**SHINE CONSTRUCTION PLANNING
PUBLIC VERSION**



Construction Planning

Aric Cowne, Construction Manager

Health. Illuminated.™

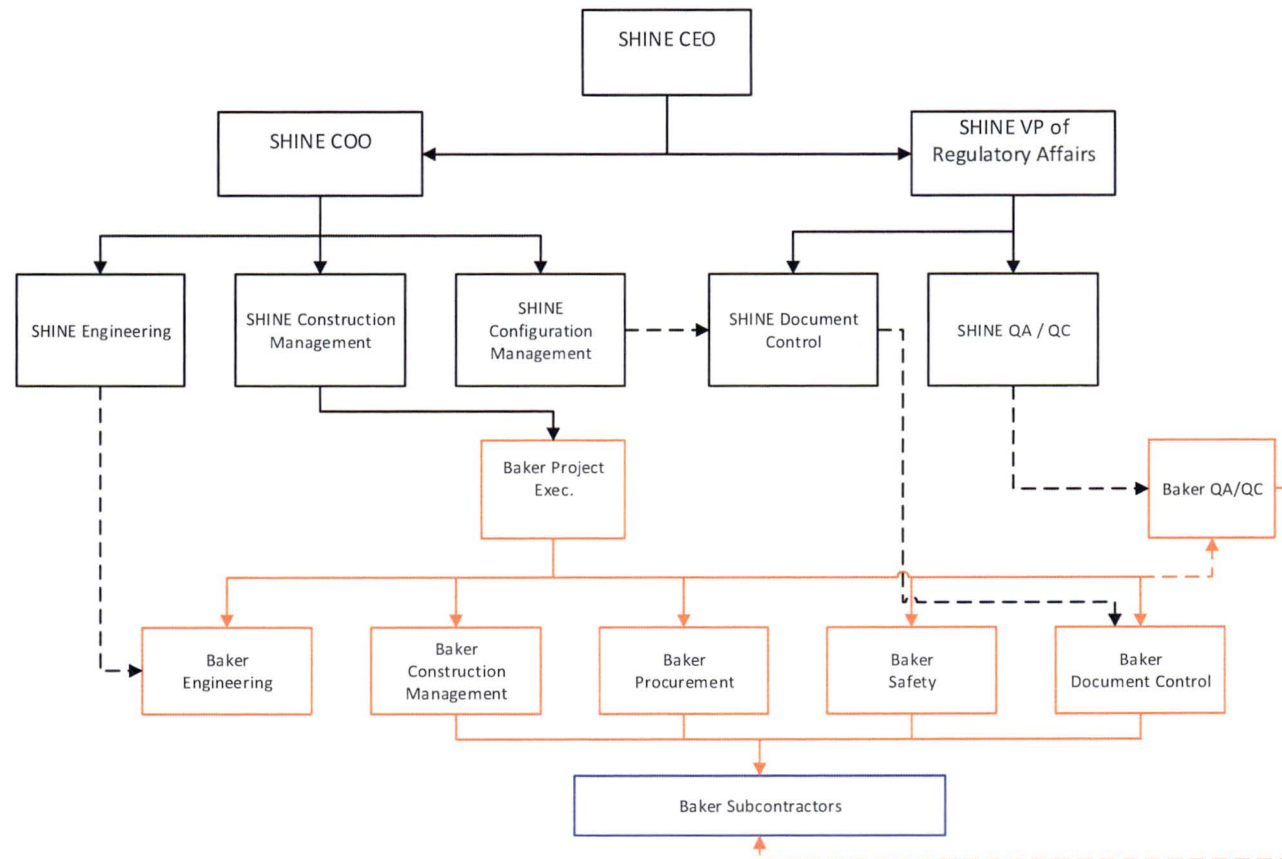


Construction Planning – Introduction

- SHINE is responsible and will provide oversight of Construction activities
- SHINE intends to contract with Baker Concrete Construction as the GC for the project
 - Previous experience working at Part 50 facility (V.C. Summer)
 - Previous experience working with Baker at Urenco USA (Part 70)
 - Baker assisted SHINE with preconstruction efforts (2 years)
- Baker is on SHINE's ASL for QL-1 Procurement and Construction
- Baker will implement their Safety Program to manage Construction work activities
- Baker will work under SHINE's Corrective Action Program
- Baker planning on peak staffing of 250-300; average around 150
- Baker construction schedule is 24 months



Construction Planning – Building & Infrastructure Organization Chart





Construction Planning – Procurement

- SHINE will purchase the majority of plant process equipment
- Baker will purchase: concrete, structural steel, architectural finishes, auxiliary system components (i.e., HVAC, electrical power distribution, etc.) and related infrastructure (i.e., cable trays, pipe supports, etc.)
- SHINE contractually flows down Design requirements to Baker
- Baker will use SHINE's Document Control for Design Input
 - Baker will use internal Document Control for Procurement and Construction documentation
- Concrete and rebar will be Commercial Grade Dedicated
- Structural steel will be purchased QL-1
- SHINE / AE of record review and approve Building shop drawings and submittals



Construction Planning – Construction

- Baker will subcontract with local (regional) specialty contractors:
 - Excavator
 - Concrete
 - Steel Erectors
 - Mechanical
 - Electrical
 - Building Finishes
- Baker will indoctrinate subcontractors under their QL-1 program
 - Through SHINE assessed QL-1 work control program, Baker initiates and controls work package development, implementation, and close-out for all QL-1 Construction activities
 - Baker provides QC oversight of their subcontractors
 - SHINE assesses Baker's QA / QC program



Construction Planning – Construction (cont.)

- Baker responsible for implementing and managing Site Access Control program
- Baker responsible for site Material & Test Equipment (M&TE)
- Baker will contract with 3rd Party Independent Testing agency
 - Soils Testing
 - Concrete Testing
 - Weld Testing
 - Electrical Testing (UPS)



Construction Planning – 2019 Schedule

Proprietary Information

ENCLOSURE 5

SHINE MEDICAL TECHNOLOGIES, INC.

**MEETING SLIDES FOR THE JANUARY 29 AND 30, 2019 MEETING
BETWEEN SHINE MEDICAL TECHNOLOGIES, INC. AND THE NRC**

**SHINE IDENTIFICATION OF SAFETY-RELATED CONTROLS
NON-PUBLIC VERSION**

Enclosures 1 and 5 contain security-related information.
Withhold from public disclosure under 10 CFR 2.390.
Upon removal of Enclosures 1, 3, and 5, this letter is uncontrolled.