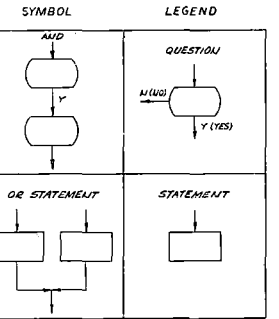


NOTES

1. CONTAINMENT SPRAY PUMPS AUTO START UPON SIS AND CONTAINMENT HIGH PRESSURE.
2. MANUAL BLOCK DURING SHUTDOWN. SIS CLOSURE RESET AUTOMATICALLY WITH RETURN OF NORMAL PRESSURE ON C/A LOGIC.
3. MAIN STEAM ISOLATION BLOCK IS EFFECTED WITH 3/4 LOW PRESSURE LOGIC COMBINED WITH MANUAL BLOCK INITIATION. BLOCK IS AUTOMATICALLY RESET WITH RETURN OF 3/4 NORMAL PRESSURE LOGIC.



4. ON RECEIPT OF SIS, CONT. SPRAY PUMPS GO ON STANDBY, AWAITING CONT. HIGH PRESSURE SIGNAL.

REV	DATE	DESCRIPTION	BY	CHKD	APP'D
1	10/1/77	CHANGED 3/4 LOW PRESSURE LOGIC TO 3/4 LOW PRESSURE LOGIC	W. J. L.	W. J. L.	W. J. L.
2	10/1/77	REVISED 3/4 LOW PRESSURE LOGIC TO 3/4 LOW PRESSURE LOGIC	W. J. L.	W. J. L.	W. J. L.
3	10/1/77	REVISED 3/4 LOW PRESSURE LOGIC TO 3/4 LOW PRESSURE LOGIC	W. J. L.	W. J. L.	W. J. L.
4	10/1/77	REVISED 3/4 LOW PRESSURE LOGIC TO 3/4 LOW PRESSURE LOGIC	W. J. L.	W. J. L.	W. J. L.
5	10/1/77	REVISED 3/4 LOW PRESSURE LOGIC TO 3/4 LOW PRESSURE LOGIC	W. J. L.	W. J. L.	W. J. L.
6	10/1/77	REVISED 3/4 LOW PRESSURE LOGIC TO 3/4 LOW PRESSURE LOGIC	W. J. L.	W. J. L.	W. J. L.
7	10/1/77	REVISED 3/4 LOW PRESSURE LOGIC TO 3/4 LOW PRESSURE LOGIC	W. J. L.	W. J. L.	W. J. L.
8	10/1/77	REVISED 3/4 LOW PRESSURE LOGIC TO 3/4 LOW PRESSURE LOGIC	W. J. L.	W. J. L.	W. J. L.
9	10/1/77	REVISED 3/4 LOW PRESSURE LOGIC TO 3/4 LOW PRESSURE LOGIC	W. J. L.	W. J. L.	W. J. L.
10	10/1/77	REVISED 3/4 LOW PRESSURE LOGIC TO 3/4 LOW PRESSURE LOGIC	W. J. L.	W. J. L.	W. J. L.

BECHTEL COMPANY

PALISADES PLANT  
CONSUMERS POWER COMPANY

LOGIC DIAGRAM  
ENGINEERED SAFEGUARDS

REV	DATE	DESCRIPTION	BY	CHKD	APP'D
1	10/1/77	CHANGED 3/4 LOW PRESSURE LOGIC TO 3/4 LOW PRESSURE LOGIC	W. J. L.	W. J. L.	W. J. L.
2	10/1/77	REVISED 3/4 LOW PRESSURE LOGIC TO 3/4 LOW PRESSURE LOGIC	W. J. L.	W. J. L.	W. J. L.
3	10/1/77	REVISED 3/4 LOW PRESSURE LOGIC TO 3/4 LOW PRESSURE LOGIC	W. J. L.	W. J. L.	W. J. L.
4	10/1/77	REVISED 3/4 LOW PRESSURE LOGIC TO 3/4 LOW PRESSURE LOGIC	W. J. L.	W. J. L.	W. J. L.
5	10/1/77	REVISED 3/4 LOW PRESSURE LOGIC TO 3/4 LOW PRESSURE LOGIC	W. J. L.	W. J. L.	W. J. L.
6	10/1/77	REVISED 3/4 LOW PRESSURE LOGIC TO 3/4 LOW PRESSURE LOGIC	W. J. L.	W. J. L.	W. J. L.
7	10/1/77	REVISED 3/4 LOW PRESSURE LOGIC TO 3/4 LOW PRESSURE LOGIC	W. J. L.	W. J. L.	W. J. L.
8	10/1/77	REVISED 3/4 LOW PRESSURE LOGIC TO 3/4 LOW PRESSURE LOGIC	W. J. L.	W. J. L.	W. J. L.
9	10/1/77	REVISED 3/4 LOW PRESSURE LOGIC TO 3/4 LOW PRESSURE LOGIC	W. J. L.	W. J. L.	W. J. L.
10	10/1/77	REVISED 3/4 LOW PRESSURE LOGIC TO 3/4 LOW PRESSURE LOGIC	W. J. L.	W. J. L.	W. J. L.