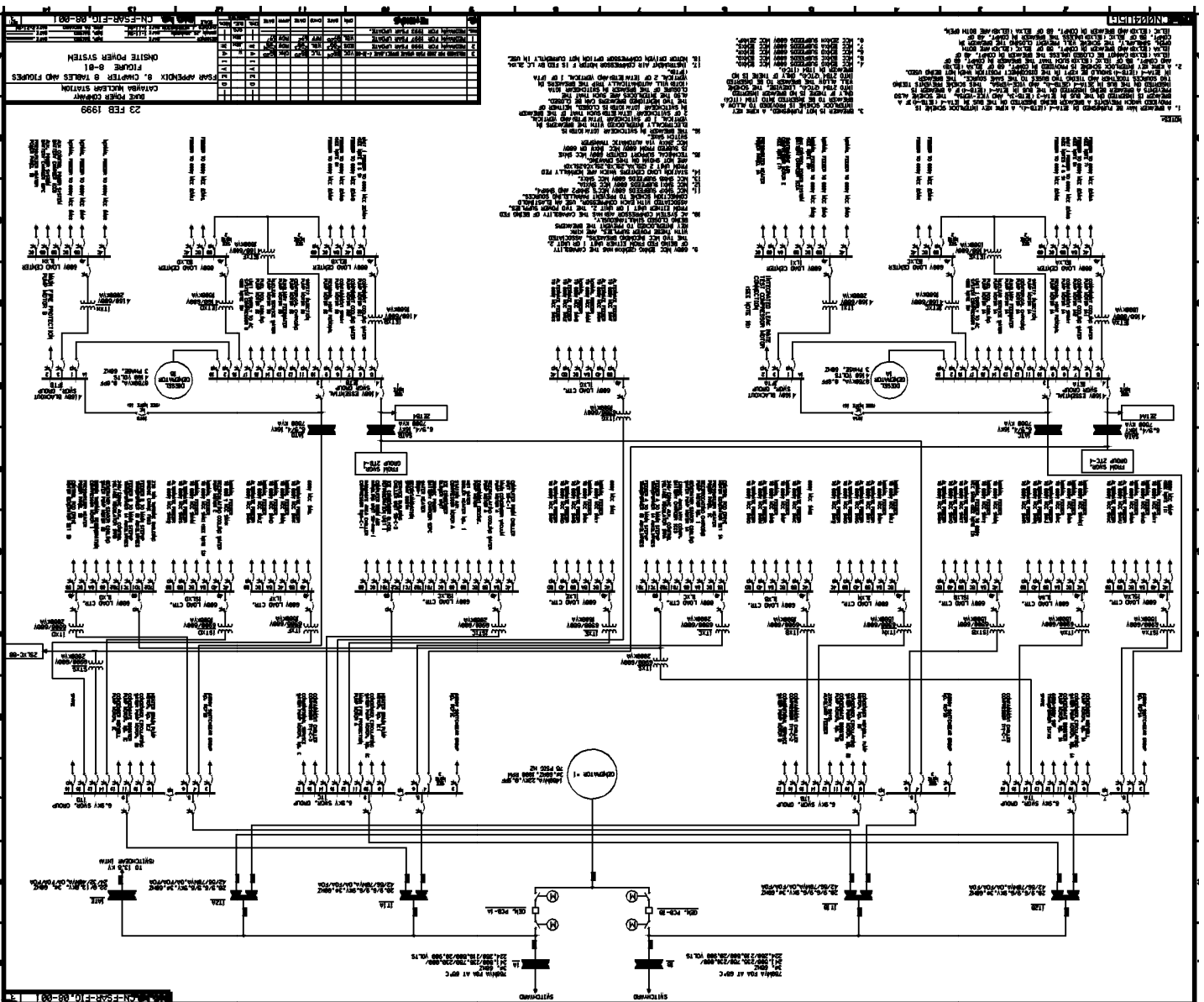
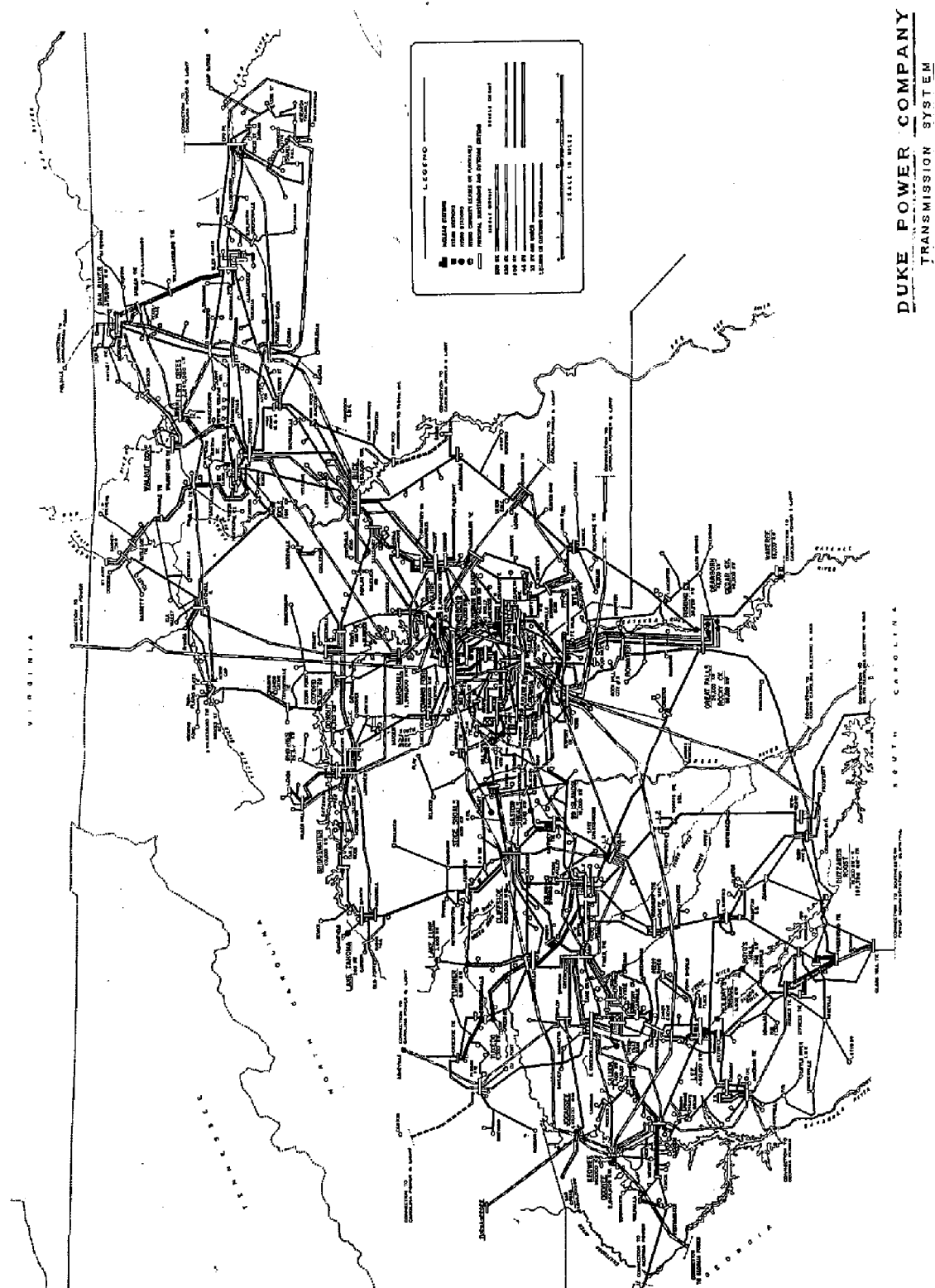


## Appendix 8B. Figures

Figure 8-1. Onsite Power System




### Figure 8-2. Duke Transmission System



**Figure 8-3. Deleted Per 2010 Update**

**Figure 8-4. Site Plan of Transmission Lines**

Security-Related Information, Withhold under 10 CFR 2.390



**Figure 8-5. Newport Transmission Line Plan**

This figure is currently unavailable in an electronic format. It can be located in a hardcopy version of the FSAR.

[illegible]

Map of York County, South Carolina, showing the proposed York County Bypass. The map includes Union, York, and Gaston counties. It features a network of roads, with the proposed bypass highlighted in a thick, dashed line. Key locations like York, SC, and Gaston, NC are labeled. A legend in the bottom left corner defines symbols for cleared area, bridge, and other features. A scale bar and north arrow are also present.

**LEGEND**

CLEARED AREA FOR THE DAY  
 "Y" - BRIDGE UNDER ROAD - 4.4 FEET  
 "W" - BRIDGE " " " " 4.4 " "  
 "L" - BRIDGE " " " " 4.4 " "  
 "V" - BRIDGE ON BRIDGE - 4.4 " "  
 "T" - BRIDGE ON BRIDGE - 4.4 " "  
 TOTAL - 4.4 FEET

**ALIGNED BY LINE**  
 SCALE 1" = 1 MILE

**NOTE: SEE SHEET "A" FOR ALLEN - ALLENS CREEK SECTION**



Figure 8-8. Clay Hill Transmission Line Plan

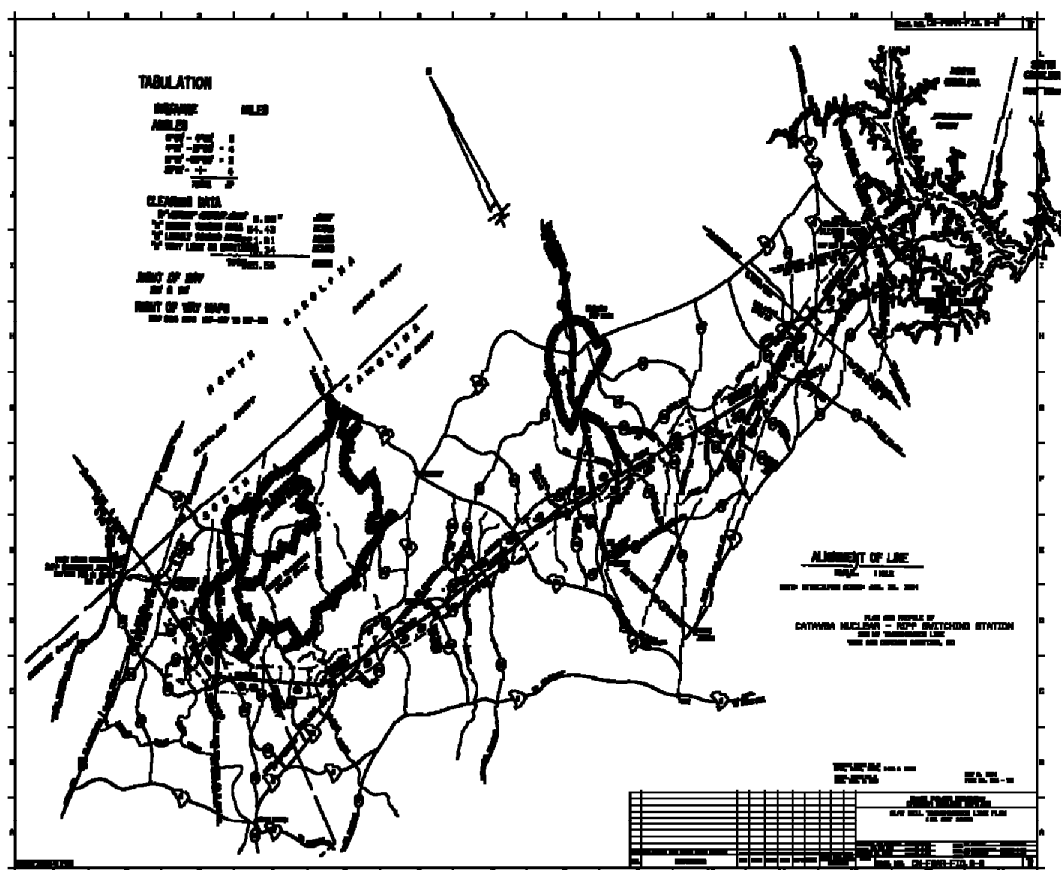
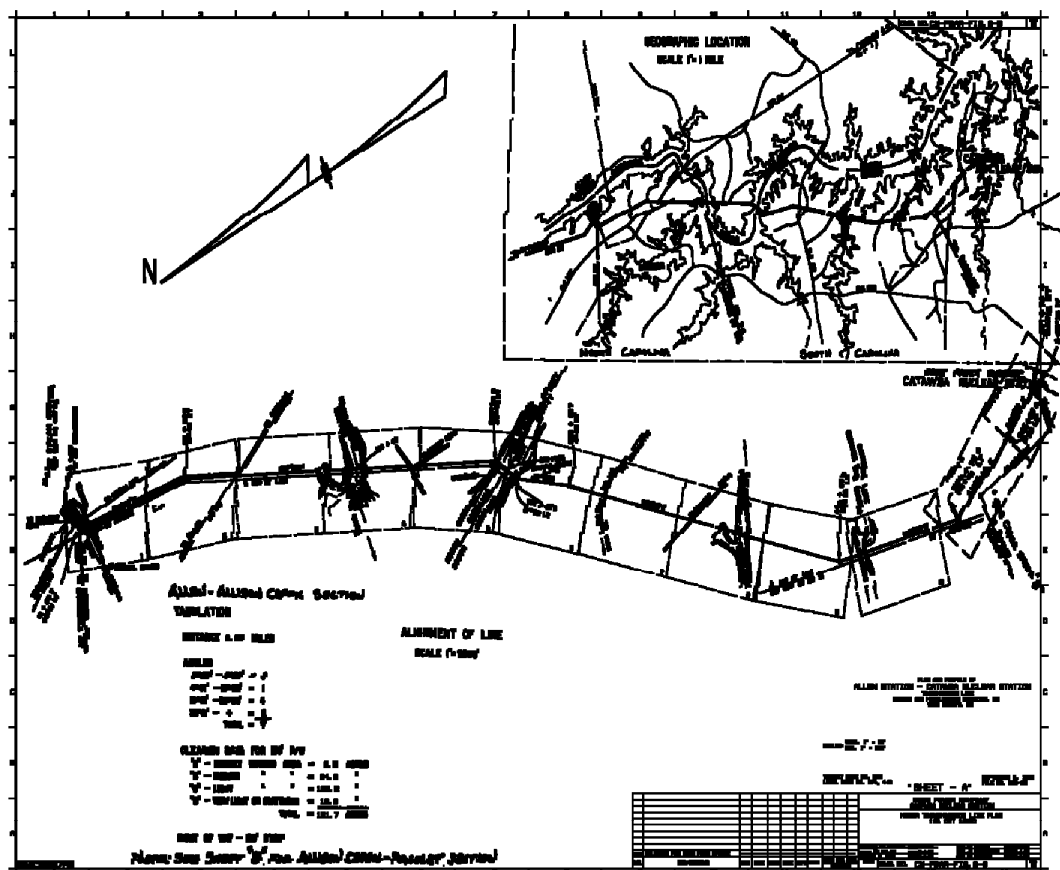


Figure 8-9. Moser Transmission Line Plan



**Figure 8-10. 230KV Switchyard General Arrangement**

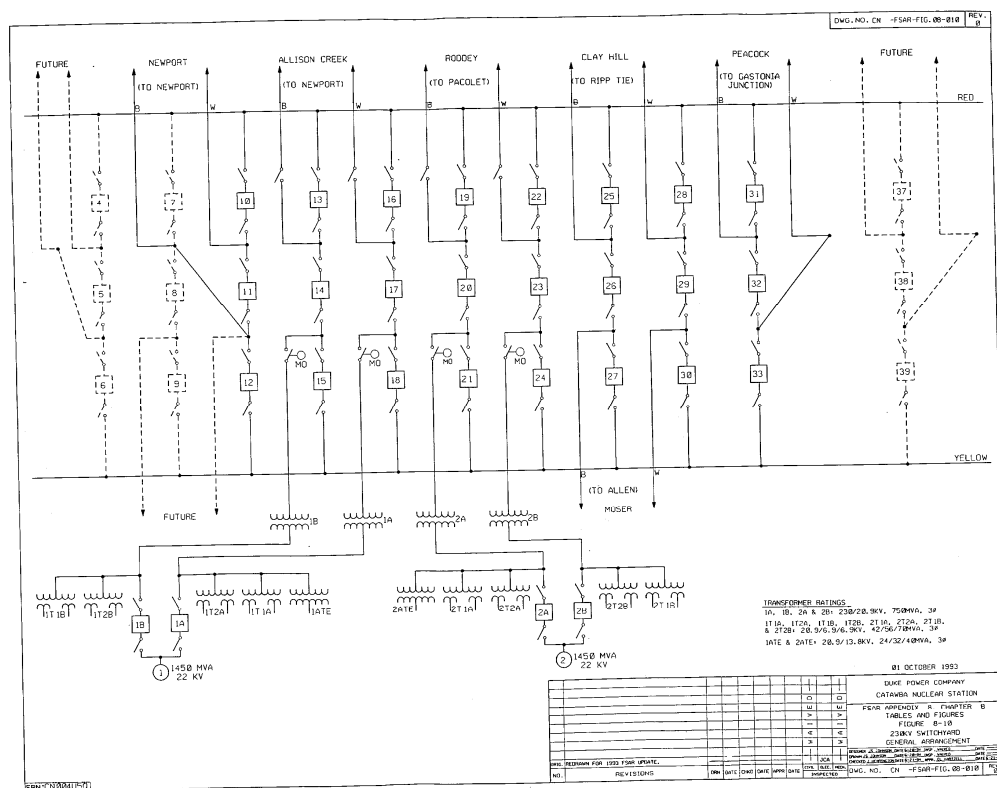


Figure 8-11. 230KV Switchyard 125VDC Auxiliary Power System

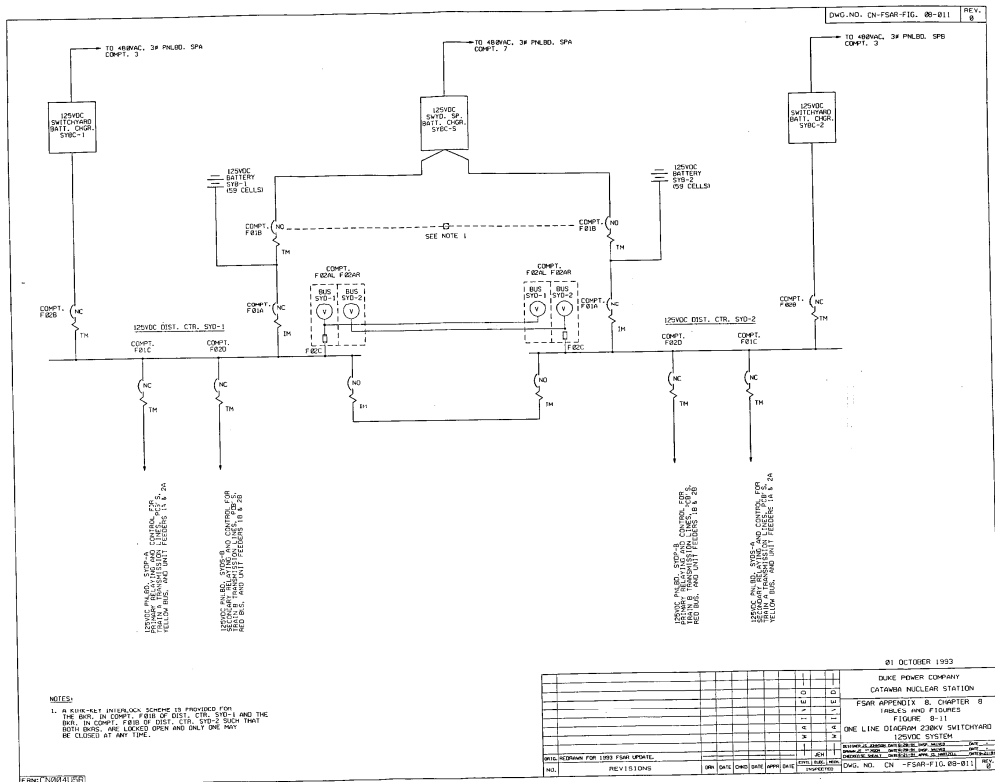


Figure 8-12. 230KV Switchyard and Station Interconnections

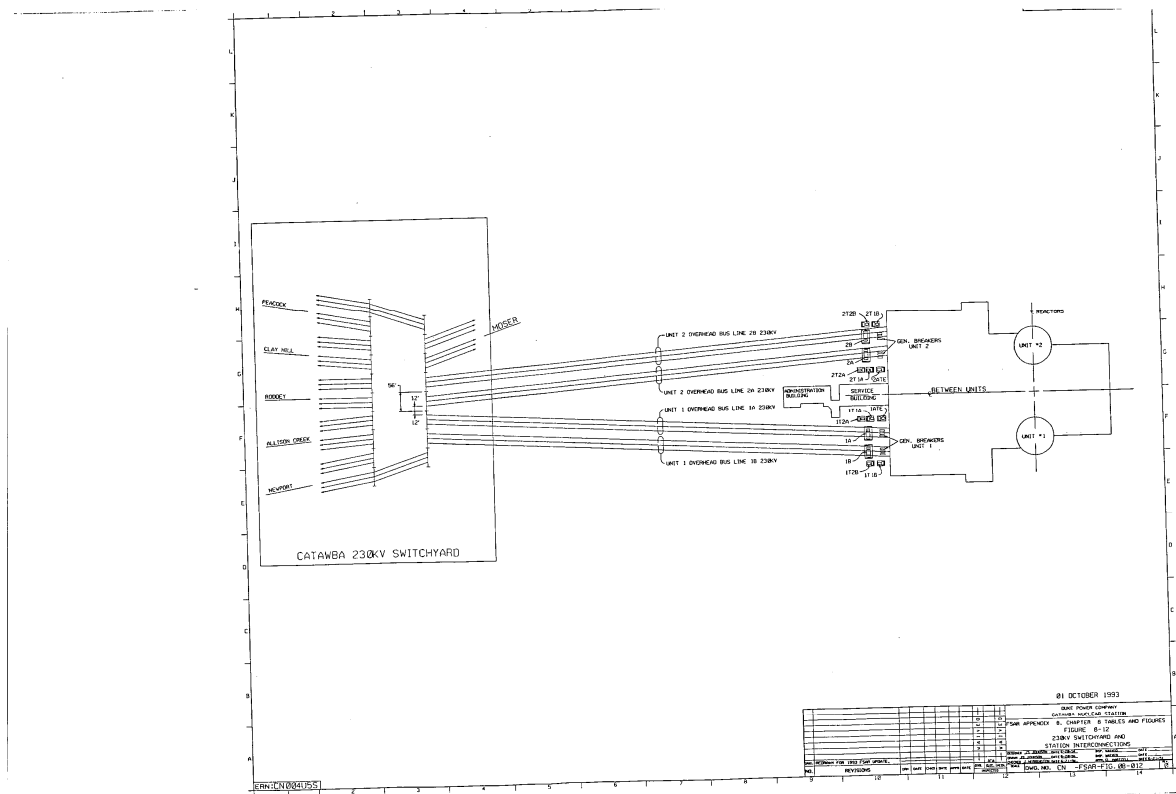
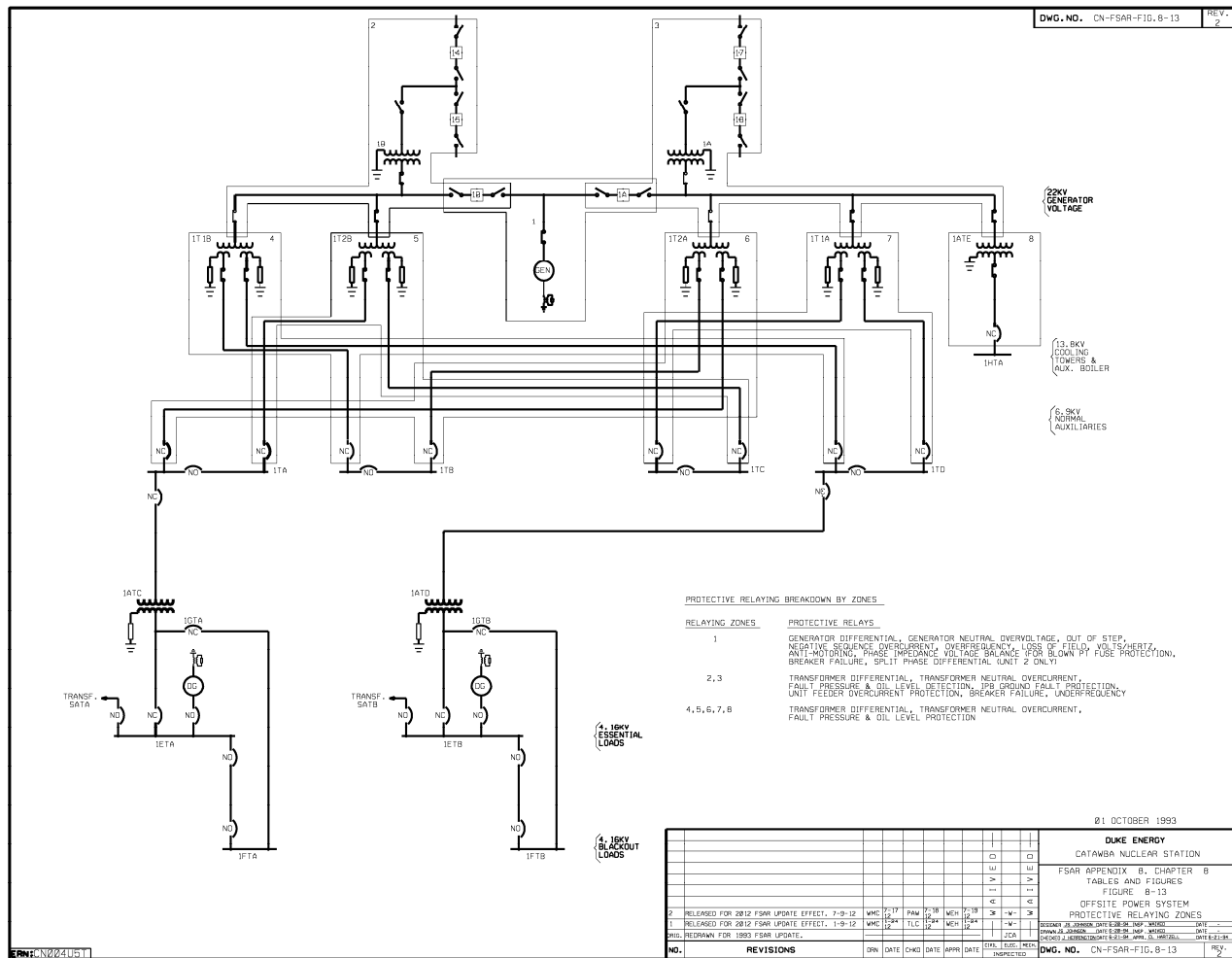


Figure 8-13. Offsite Power System Protective Relaying Zones



[illegible]

**Figure 8-15. Deleted Per 2000 Revision**

**Figure 8-16. Deleted Per 2000 Revision**

**Figure 8-17. Deleted Per 2000 Revision**

**Figure 8-18. Deleted Per 2000 Revision**



### Figure 8-19. Non-Class 1E AC Power Systems

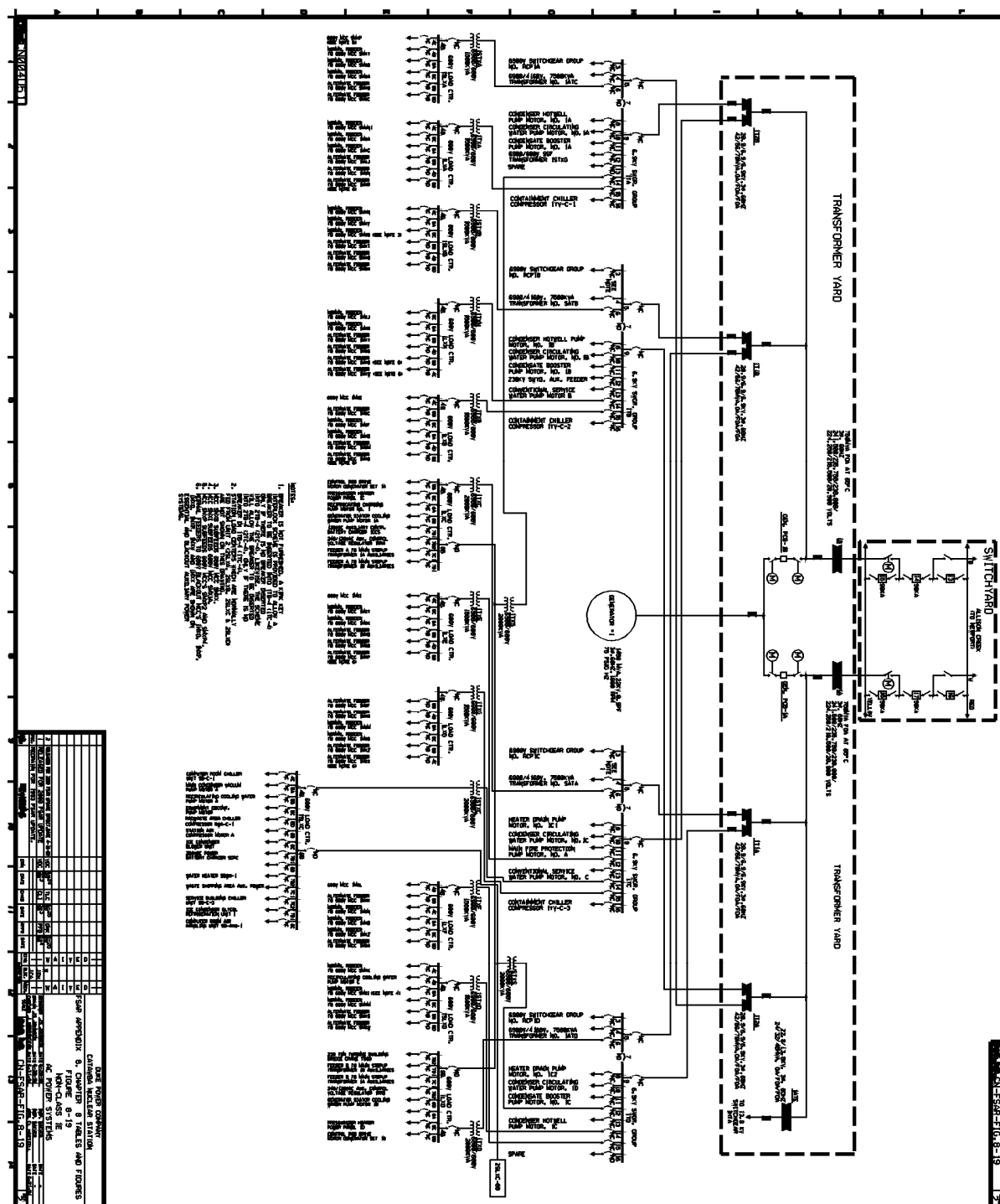


Figure 8-20. 13.8KV Normal Auxiliary Power System and 600 VAC Cooling Tower Auxiliary Power System

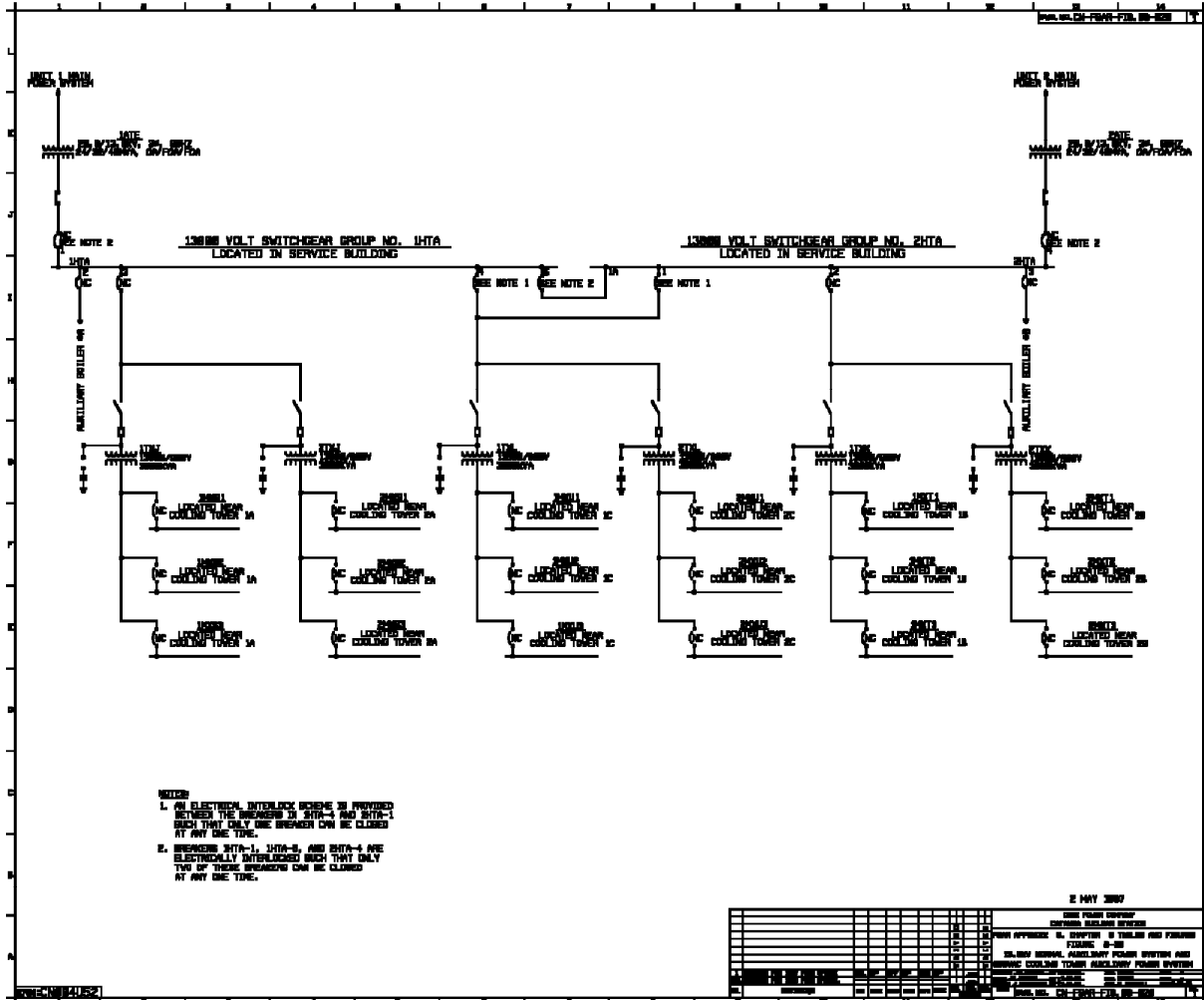
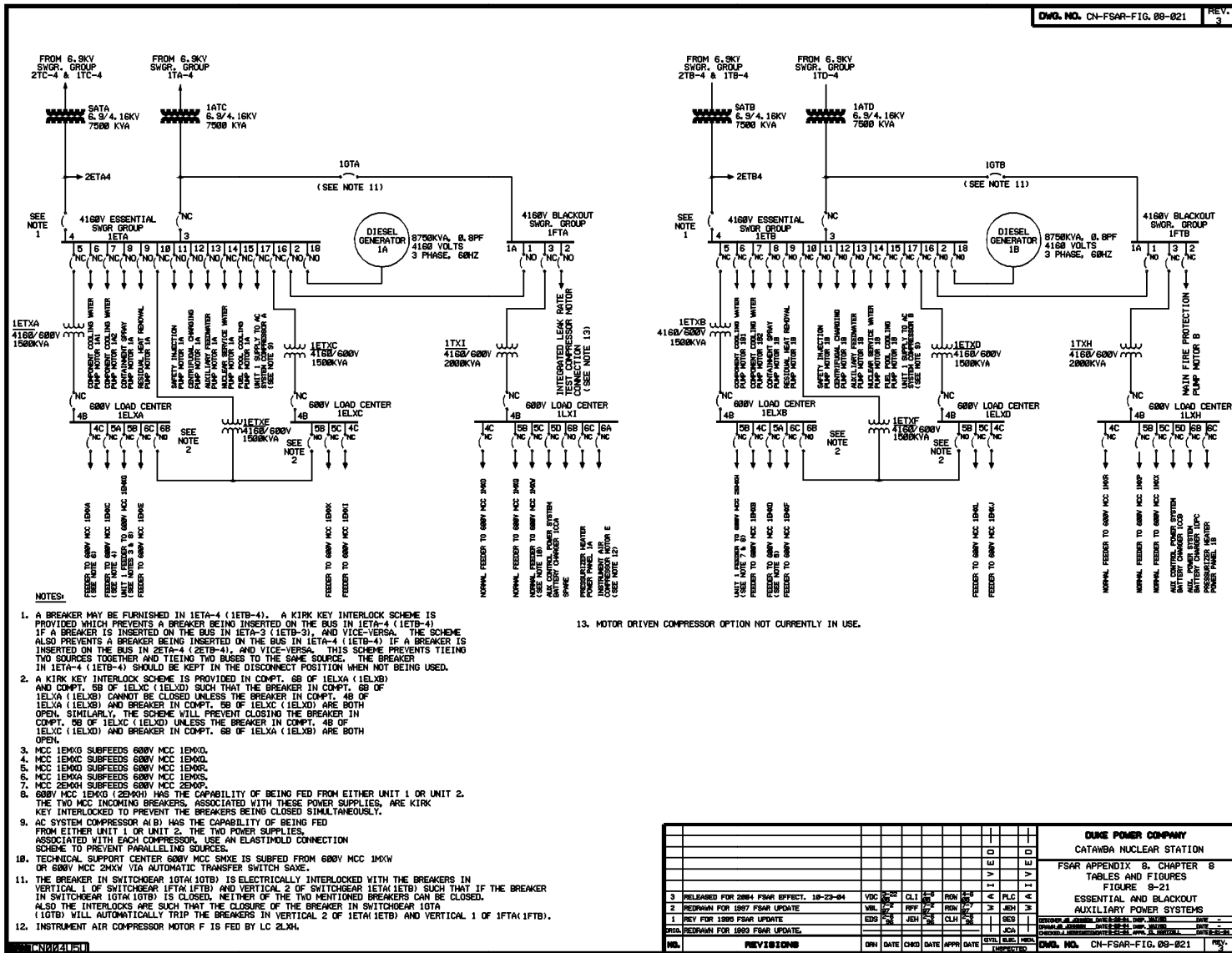


Figure 8-21. Essential and Blackout Auxiliary Power Systems



**(17 OCT 2013)**

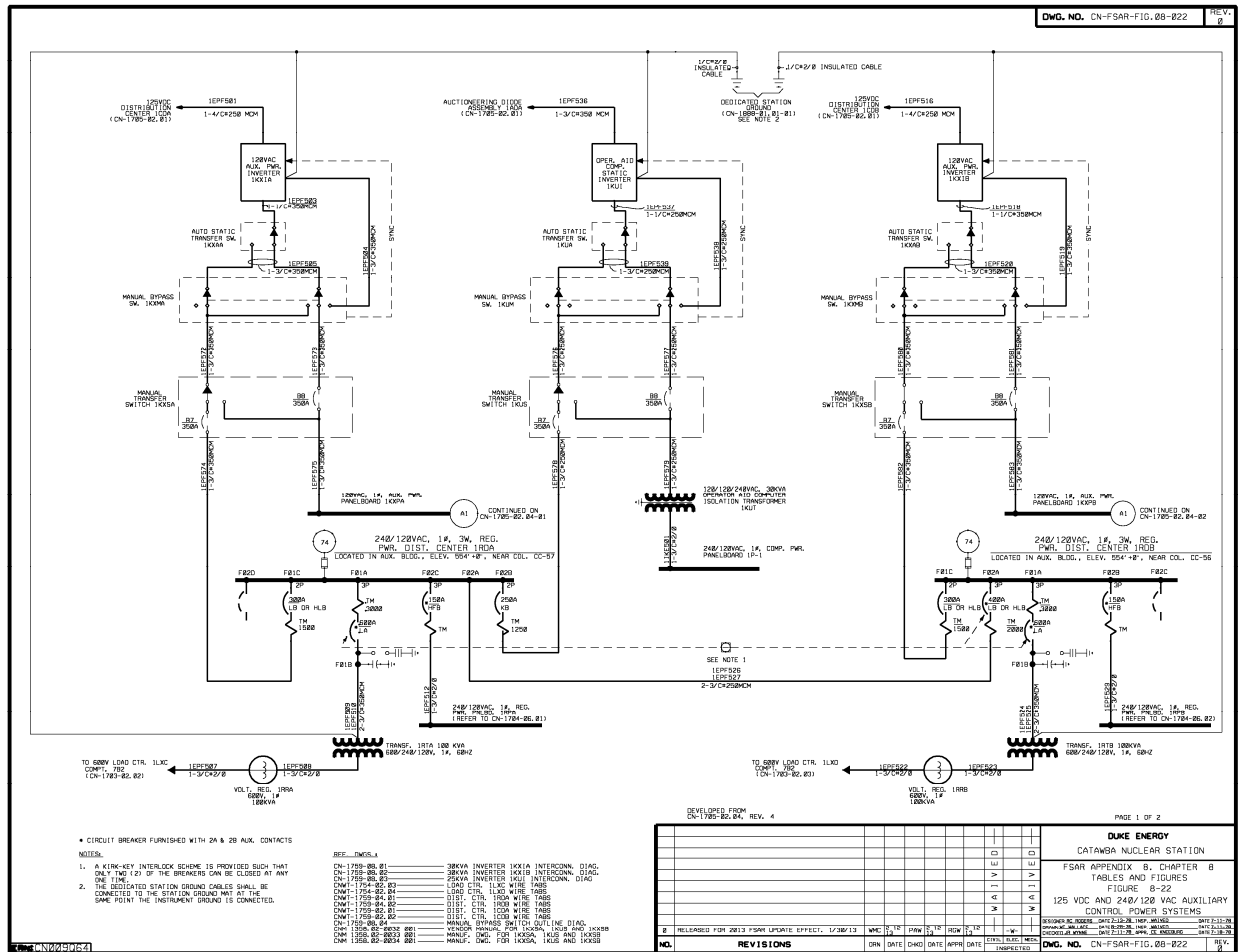




Figure 8-23. 250 VDC Auxiliary Power System

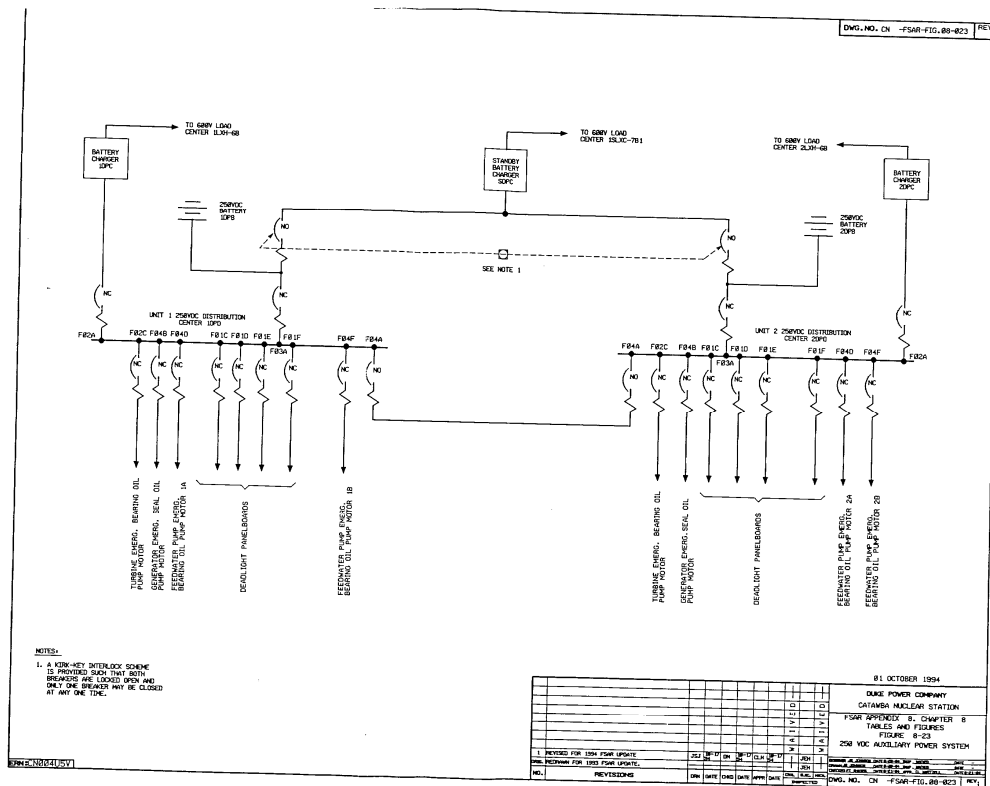


Figure 8-24. 125 VDC and 120 VAC Vital Instrumentation and Control Power System

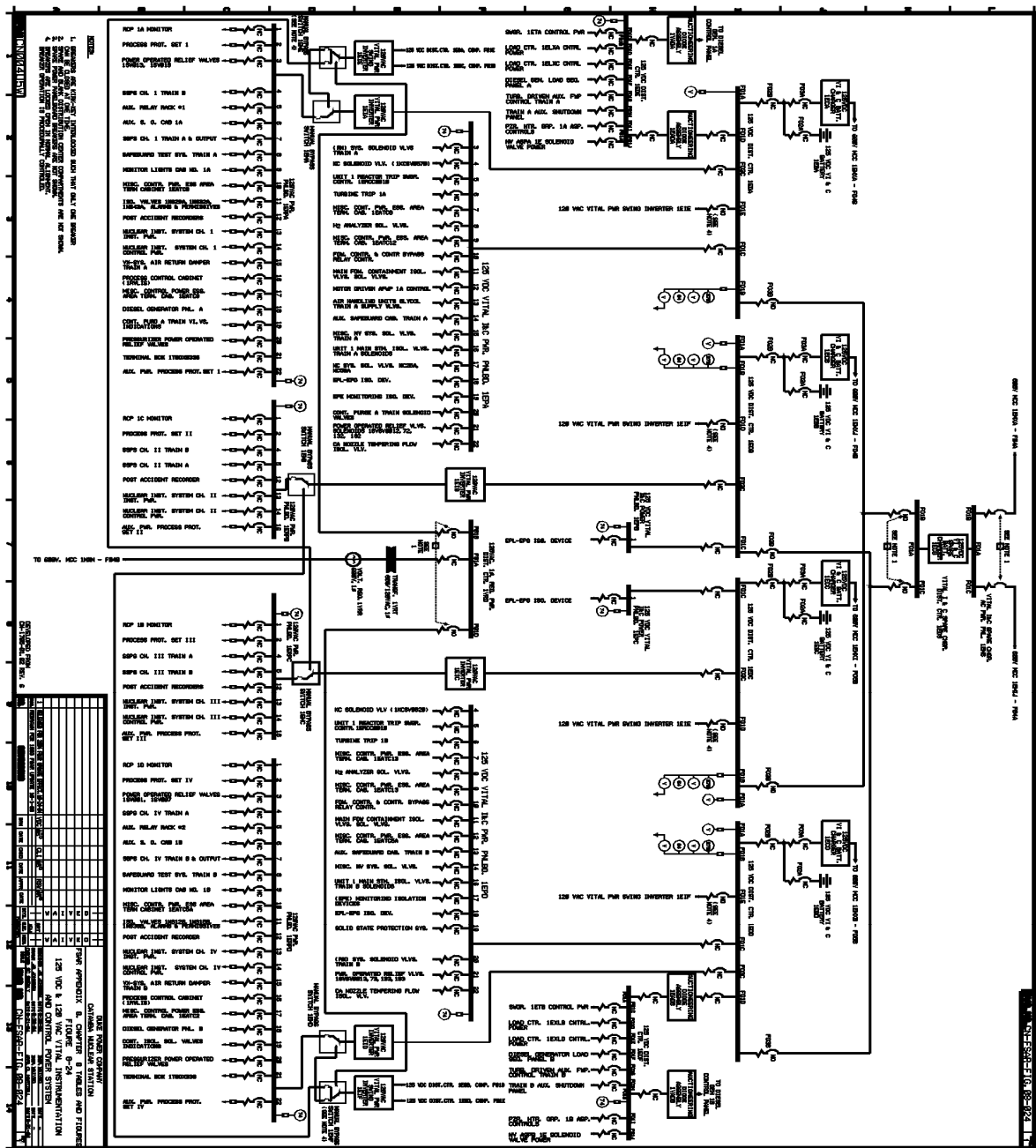
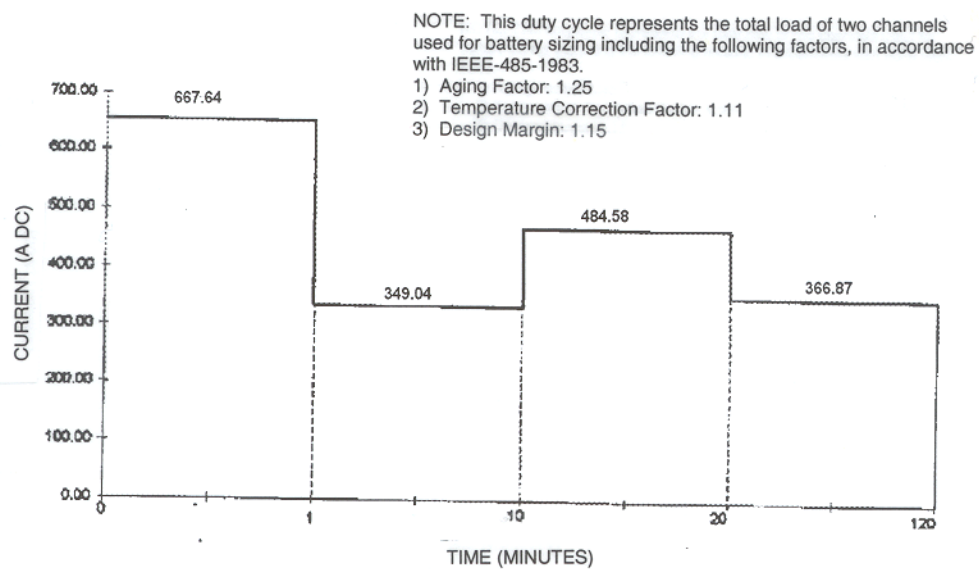


Figure 8-25. 125 VDC Vital Instrumentation and Control Battery Duty Cycle





**Figure 8-26. 125 VDC Diesel Essential Auxiliary Power System**

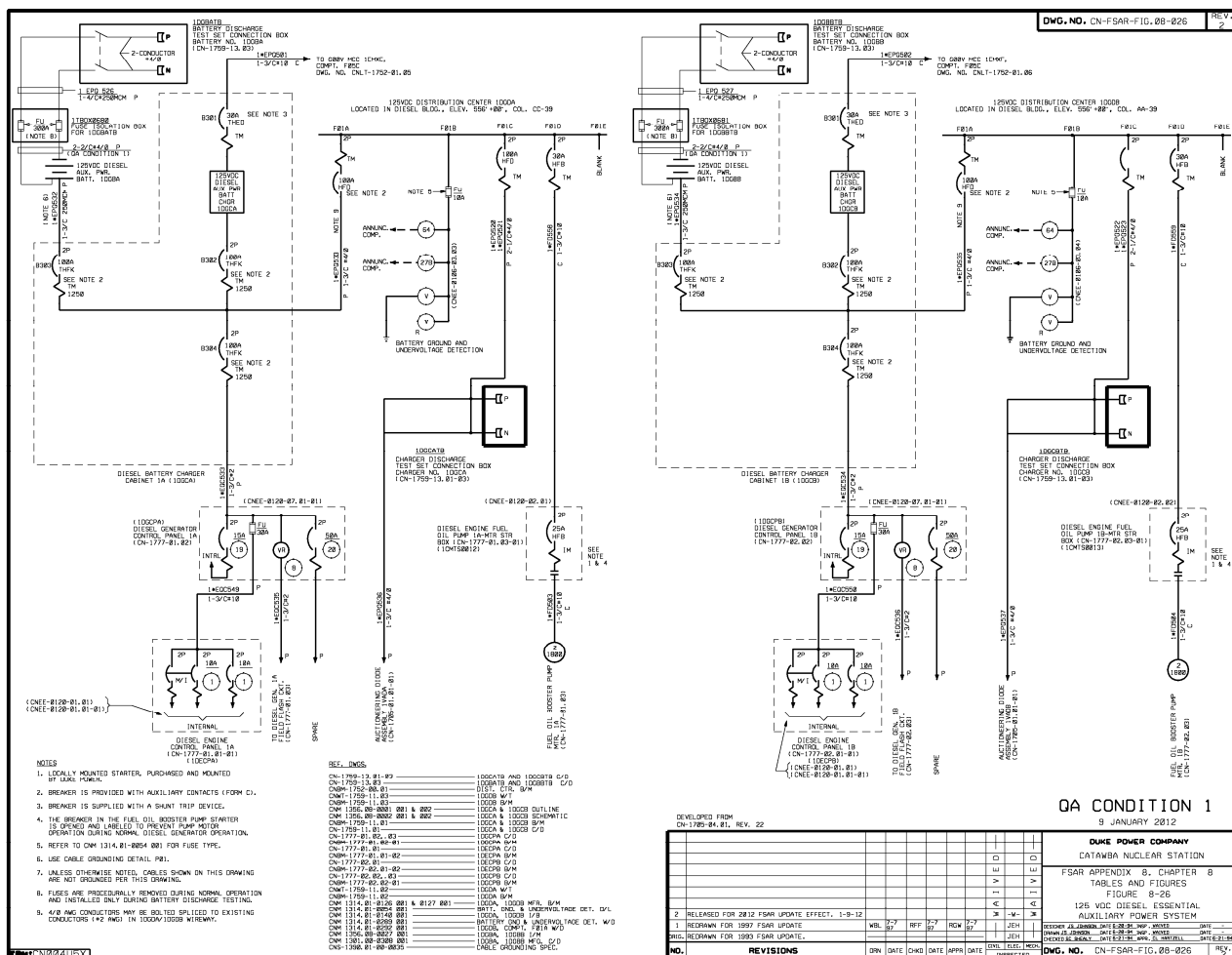
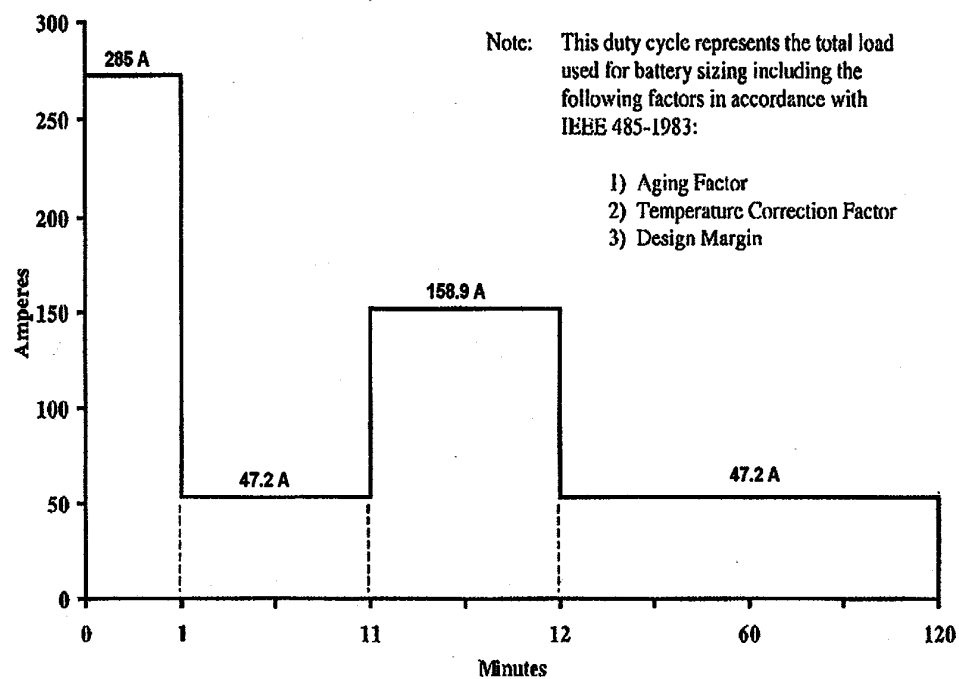


Figure 8-27. 125 VDC Diesel Auxiliary Power Battery Duty Cycle



[illegible]