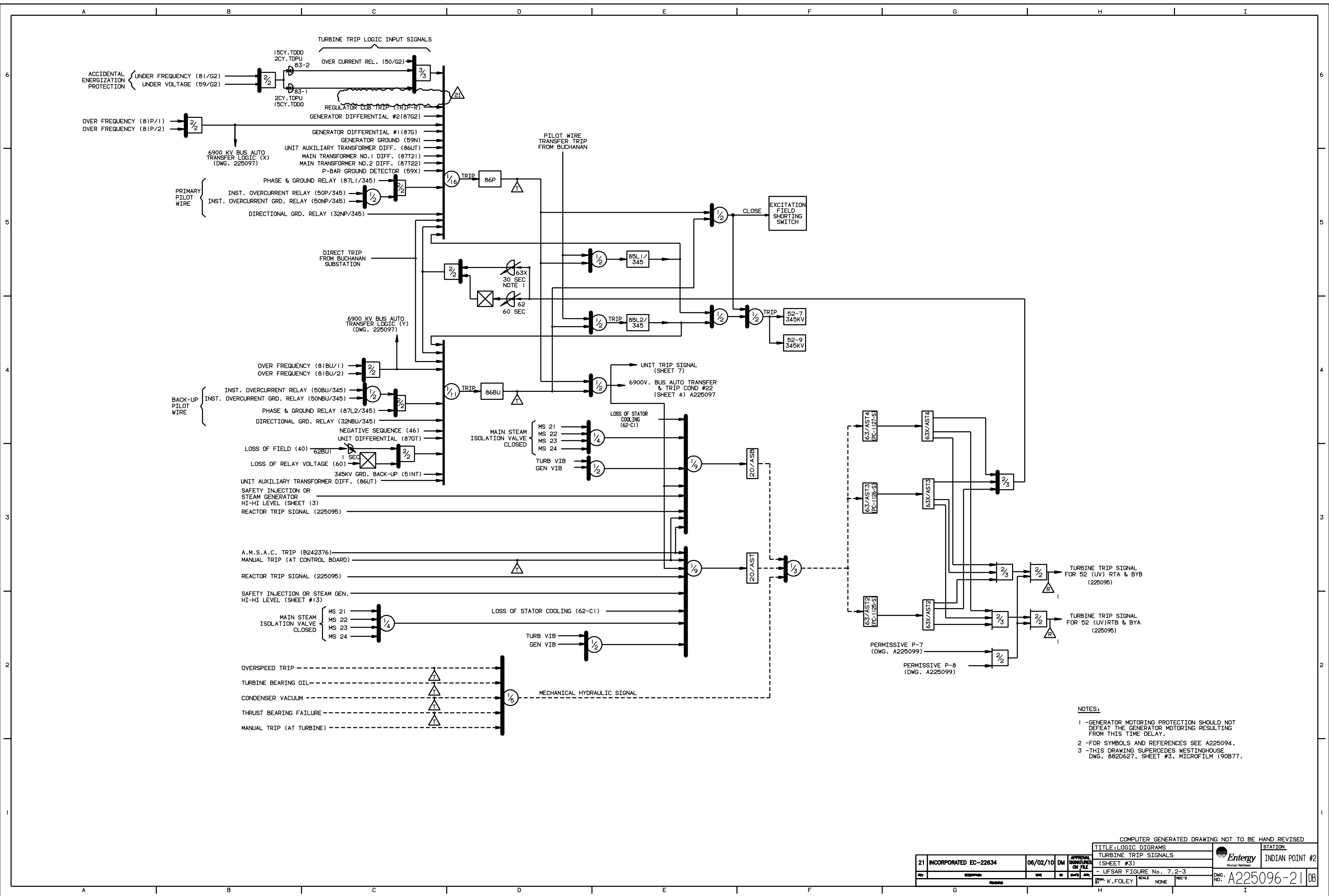




- THIS DRAWING CONTAINS ITEMS WHICH
MUST BE CONTROLLED WITHIN CON EDISON AS:
" CLASS A " ITEMS
PER CI-240-1



NOTES:
1 -GENERATOR MOTORING PROTECTION SHOULD NOT DEFEAT THE GENERATOR MOTORING RESULTING FROM THIS TIME DELAY.
2 -FOR SYMBOLS AND REFERENCES SEE A225094.
3 -THIS DRAWING SUPERCEDES WESTINGHOUSE DWG. 882D627, SHEET #3, MICROFILM 190B77.

COMPUTER GENERATED DRAWING NOT TO BE HAND REVISED

21

INCORPORATED EC-22634

06/02/10

DM

APPROVAL SIGNATURES ON FILE

DATE

BY

CHK'D

APP'D

TITLE: LOGIC DIAGRAMS

TURBINE TRIP SIGNALS

(SHEET #3)

UFSAR FIGURE No. 7.2-3

SCALE NONE

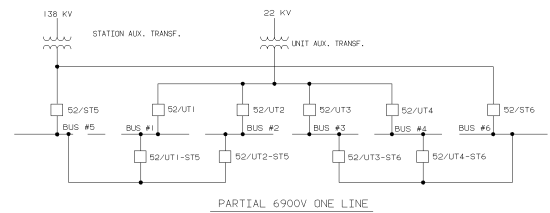
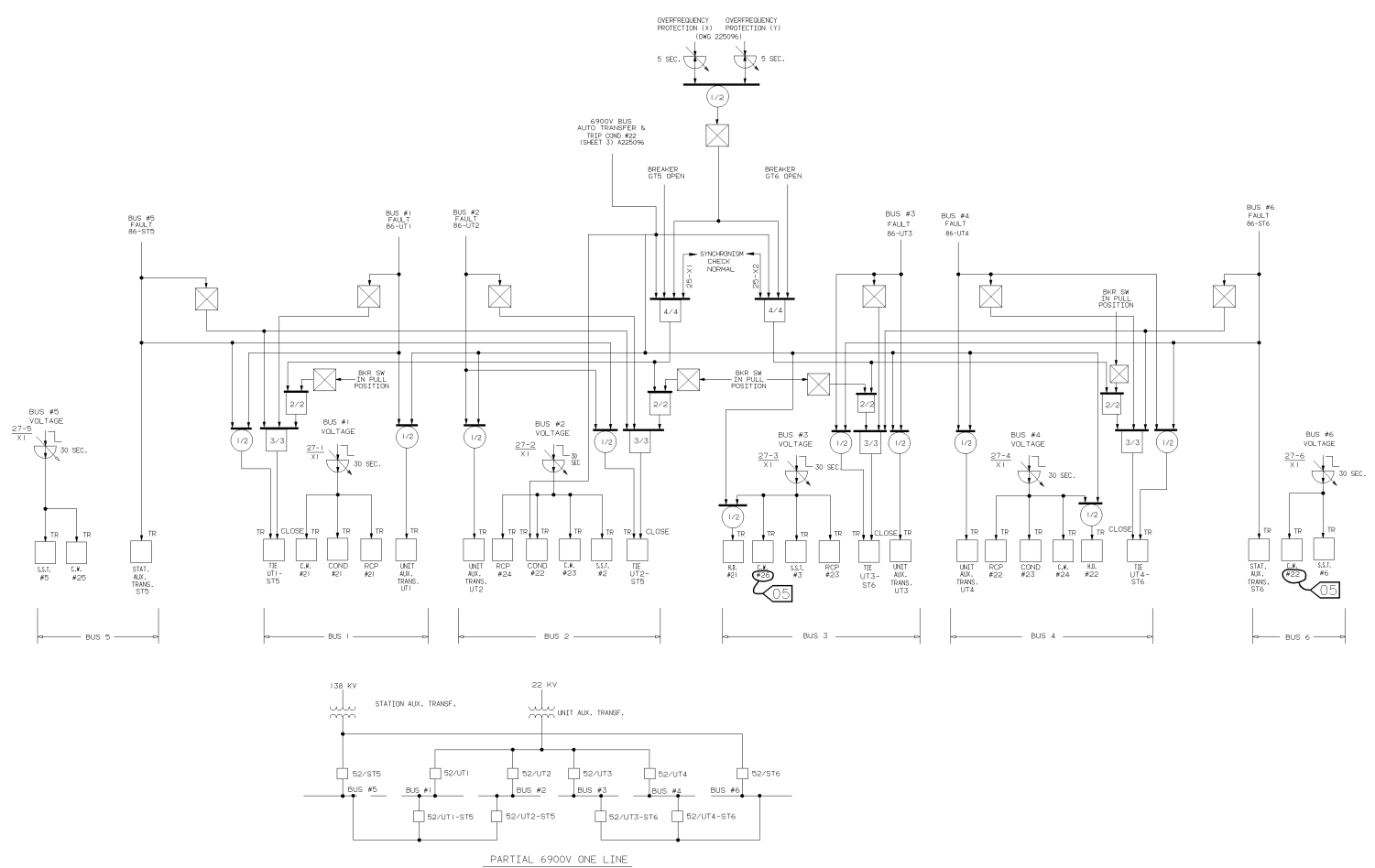
REV'D

STATION

INDIAN POINT #2

DWG. NO. A225096-21

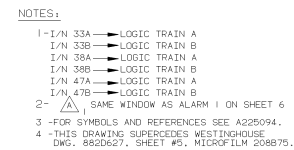
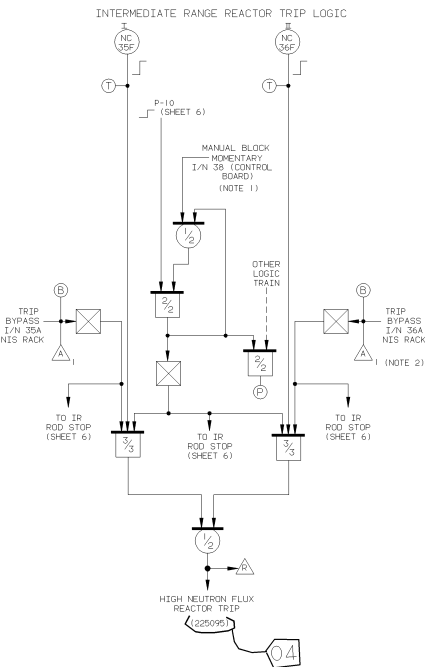
DB



NOTES:
 1 -FOR SYMBOLS AND REFERENCES SEE A225094.
 2 -THIS SUPERCEDES WESTINGHOUSE DWG. 882D627, SHEET #4, MICROFILM 190B78.

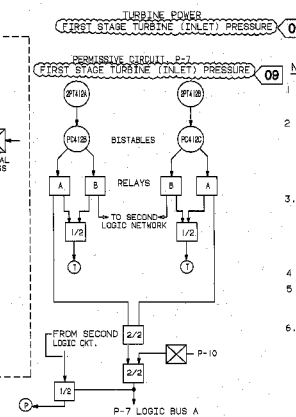
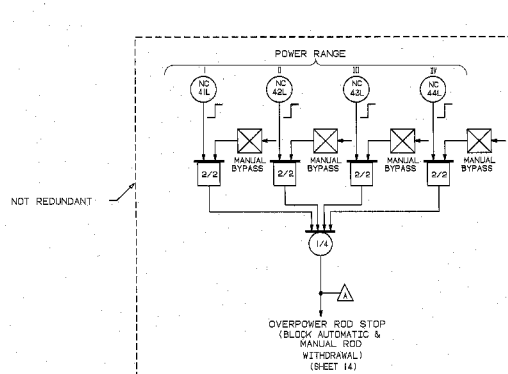
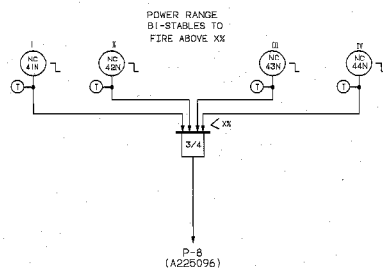
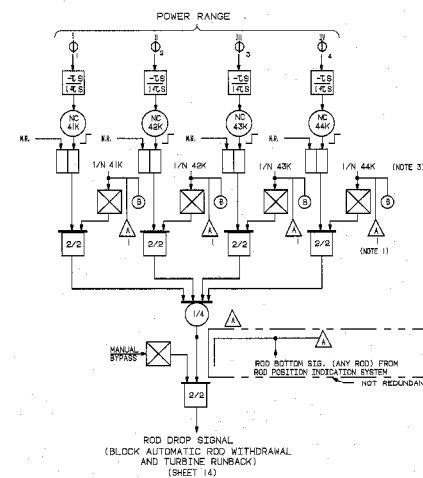
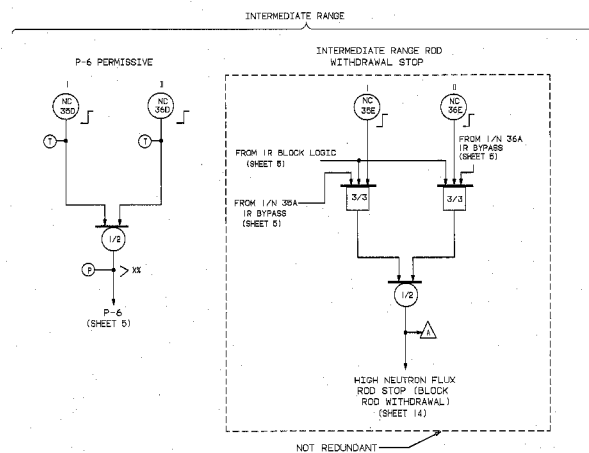
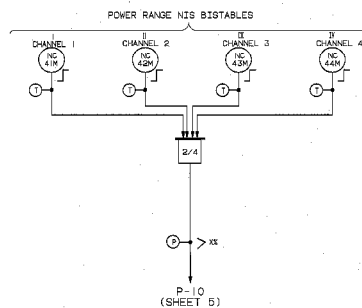
THIS DRAWING CONTAINS ITEMS WHICH
 MUST BE CONTROLLED ACTION ON DESIGN K1
"CLASS A" ITEMS
 PER CI-240-1

COMPUTER GENERATED DRAWING NOT TO BE HAND REVISED																					
REVISIONS	DESIGNED	THIS REVISION IS NON-CLASS PER CI-240-1 UPDATED DWG. PER DES #1999-0000 ISSUED FOR RECORD P/N 69982-CD				JOHN J. LOWNEY				GERARD L. BLEWLE				TITLE: LOGIC DIAGRAM 6900V BUS AUTO TRANSFER (SHEET #4) - UFSAR FIGURE No. 7.2-4				STATION INDIAN POINT #2			
	CHECKED													Edison							
	ENGINEER	REV/TM 05/15/00				DATE				APPROVALS				SCALE NONE				DWG. NO. A225097-05			
		REVIEW																			
	F				G				H				I								



THIS DRAWING CONTAINS ITEMS WHICH
MUST BE CONTROLLED WITHIN COM EDISON AS
"CLASS A" ITEMS
PER CI-240-1

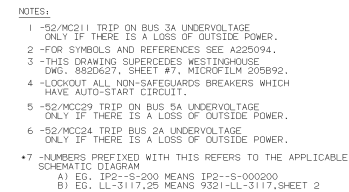
COMPUTER GENERATED DRAWINGS NOT TO BE HAND REVISED														
REV	PMD BY/REV	THIS REV IS NON-CLASS AS PER CL-540 UPDATED DWG PER CRS19990254 & CRS199903752 PMD D-242 RELEASED FOR RECORD P/N 6991-NP	SP	JOHN J LOWMEY				GERARD L BLENNIE				Con Edison INDIAN POINT #2		STATION
				DATE	CHK.	SUPV.	DESIGN ENG	DATE TNG	DATE REV.	DATE	SCALE	NOTE	DATE	NO.
				APPROVALS										
A225098-04 DB														




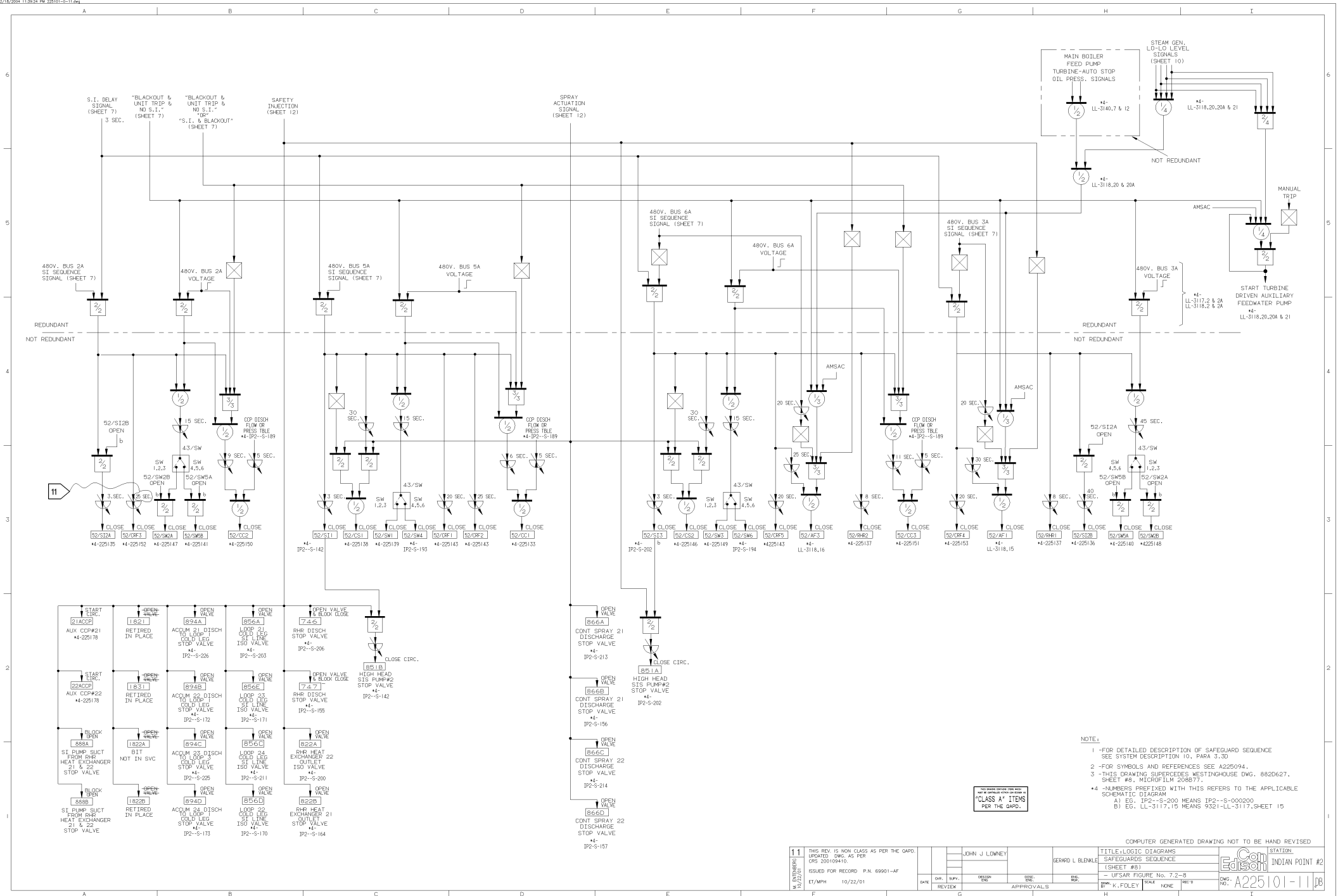
- NOTES:
1. SAME WINDOW AS ALARM 1 ON SHEET 3.
 2. THE BYPASS SIGNALS ARE MADE UP BY MEANS OF TWO THREE-POSITION SWITCHES ON A NIS RACK. SWITCH 1/N 49 A BYPASSES EITHER NC-41L OR NC-42L. SWITCH 1/N 49B BYPASSES EITHER NC-44 OR NC-44L.
 3. 1/N 41K THRU 1/N 44K ARE THREE-POSITION SWITCHES ON NIS RACKS. THE POSITIONS ARE RESET, NORMAL AND BYPASS. RESET OF THE LATCHING BISTABLE ALSO OCCURS IN BYPASS POSITION.
 4. FOR SYMBOLS AND REFERENCES SEE A225094.
 5. THIS DRAWING SUPERCEDES WESTINGHOUSE DWG. 882527, SHEET #6, MICROFILM 208876.
 6. THE AUTOMATIC CONTROL ROD WITHDRAWAL FEATURE IN PLANT OPERATION HAS BEEN PHYSICALLY DISABLED, ALLOWING ONLY THE AUTOMATIC CONTROL ROD INSERTION MODE TO BE IN EFFECT WHEN ROD CONTROL IS IN AUTOMATIC.

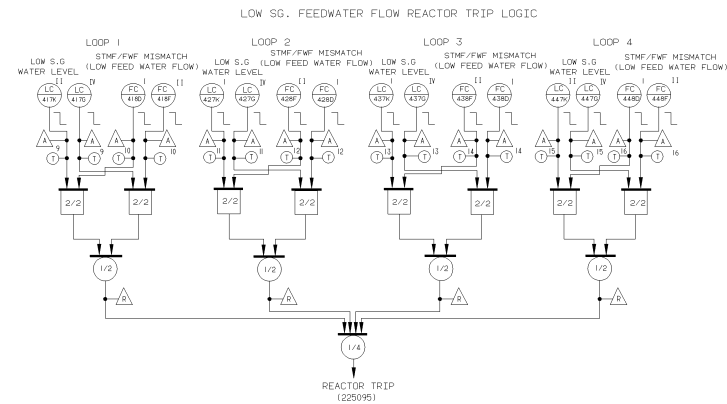
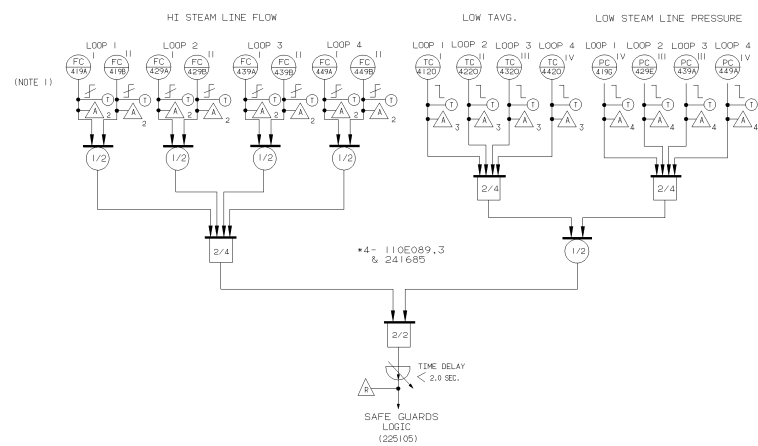
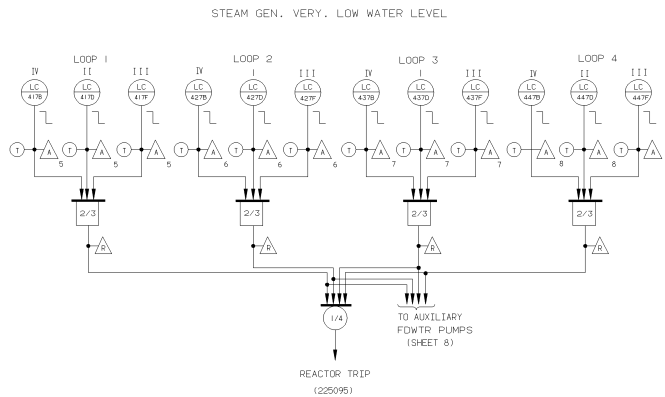
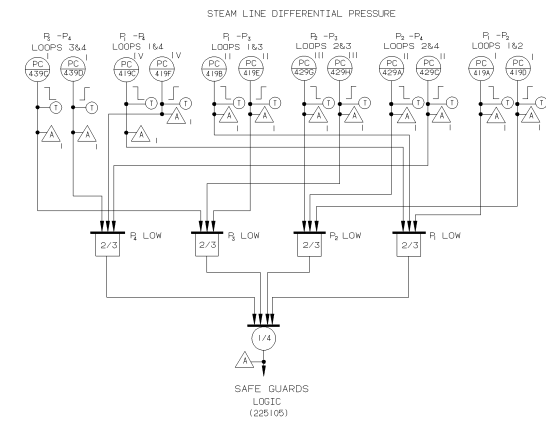
THIS DRAWING CONTAINS ITEMS WHICH MUST BE CONTROLLED WITHIN THE "CLASS A" ITEMS PER THE QAPD

COMPUTER GENERATED DRAWING NOT TO BE HAND REVISED									
TITLE: LOGIC DIAGRAMS NUCLEAR INSTR. PERMISSIVES & BLOCKS (SHEET 6)					STATION:				
— USFAR FIGURE No.7.2-6					INDIAN POINT #2				
9	INCORPORATED DRN-05-05280 EX-#2-05-18059	10/23/85	SM	A-1	1/1	1/1			
10	DRN-05-10050	10/23/85	SM	A-1	1/1	1/1			
DRAWN BY: [Signature] CHECKED BY: [Signature] DESIGNED BY: [Signature]					DWG. NO.: A225099-09 DB				
DATE: 10/23/85					SCALE: NONE				



COMPUTER GENERATED DRAWING NOT TO BE HAND REVISED									
JOHN J. LONNEY		GERARD L. BLENNIE		TITLE: LOGIC DIAGRAM EMERGENCY GENERATOR STARTING (SHEET #7) - USFAR FIGURE NO. 7-2 -		 STATION: INDIAN POINT #2			
DATE	REV.	DESIGN	DATE	DES.	DATE	CHK.	DATE		
APPROVALS		APPROVALS		APPROVALS		APPROVALS			
						DWG. NO. A225100-05			



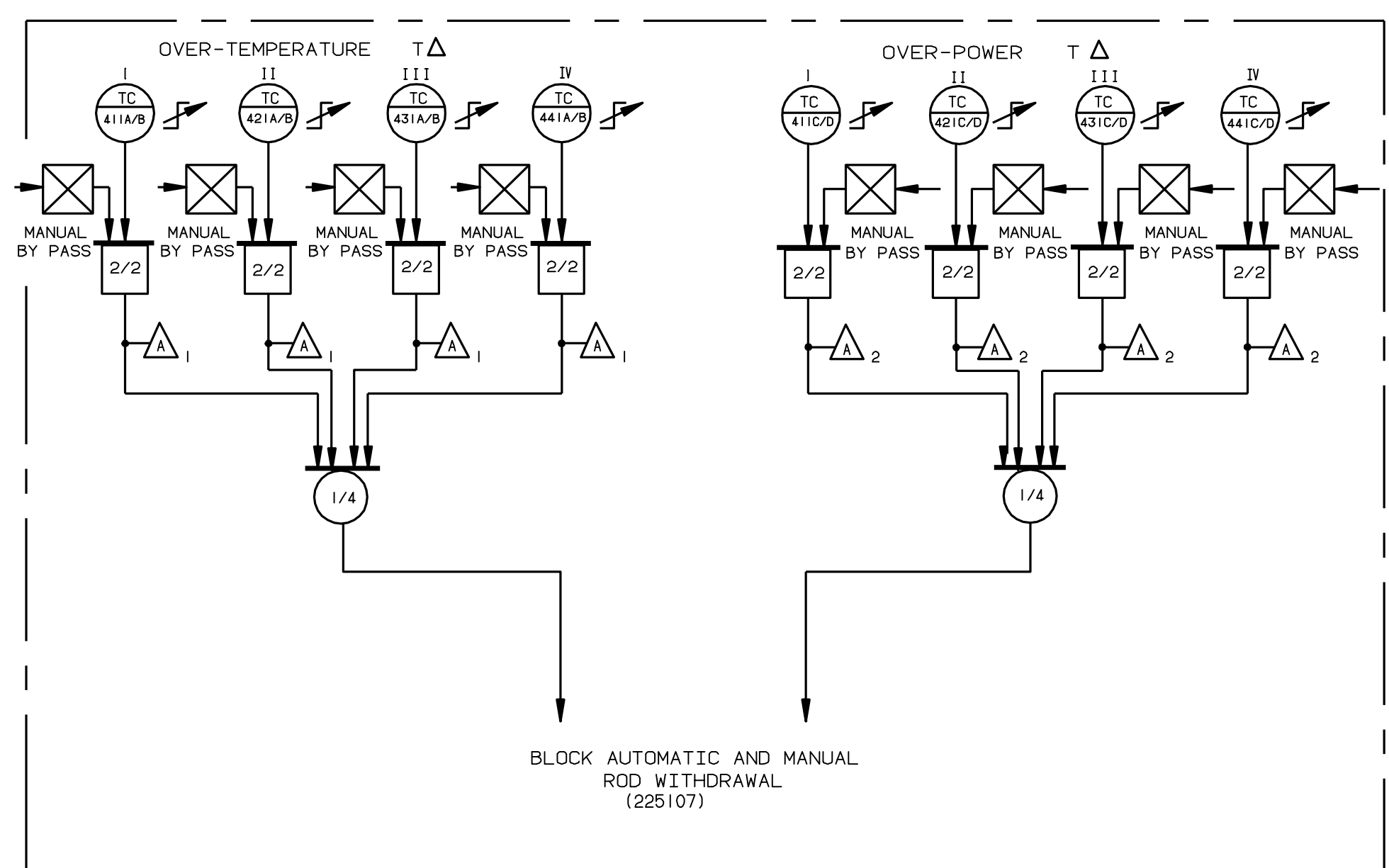
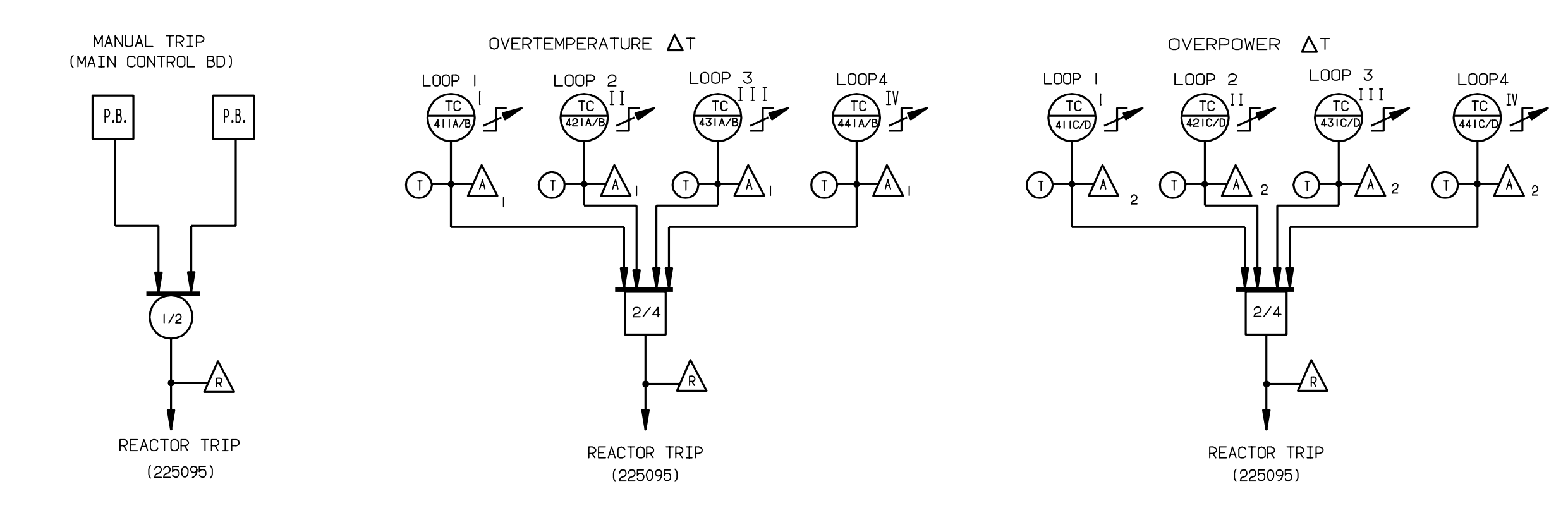


- NOTES:
- 1 - SETPOINTS OF STEAM FLOW BISTABLES ARE ADJUSTABLE AND SET BY TURBINE FIRST STAGE PRESSURE.
 - 2 - FOR SYMBOLS AND REFERENCES SEE A225094.
 - 3 - THIS DRAWING SUPERCEDES WESTINGHOUSE DWG. 8820627, SHEET #10, MICROFILM 205895.
 - 4 - NUMBERS PREFIXED WITH THIS REFERS TO THE APPLICABLE SCHEMATIC DIAGRAM
- A) EG. 110E089.2 REFERS TO THE WH'SE SWD.SHEET #3

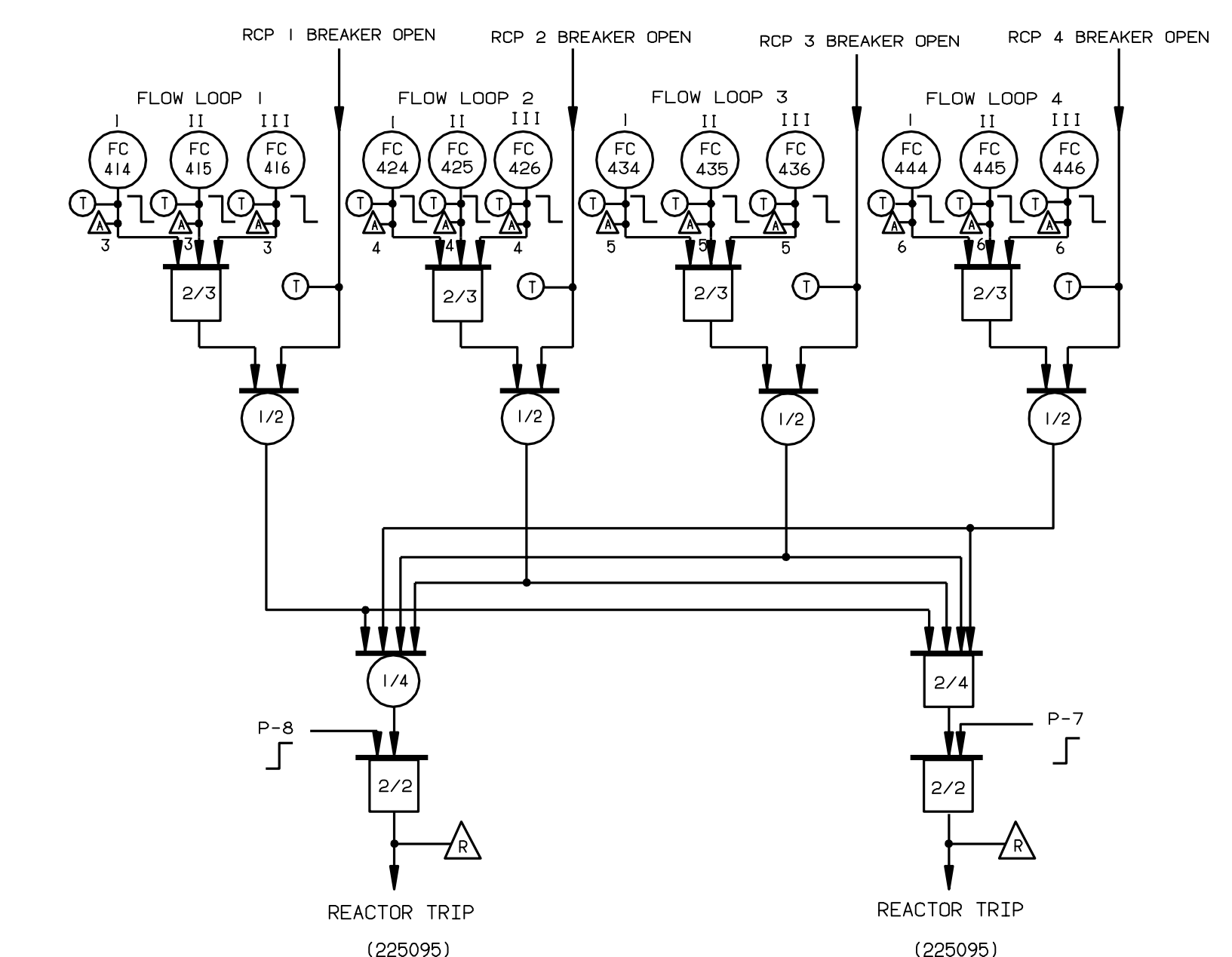
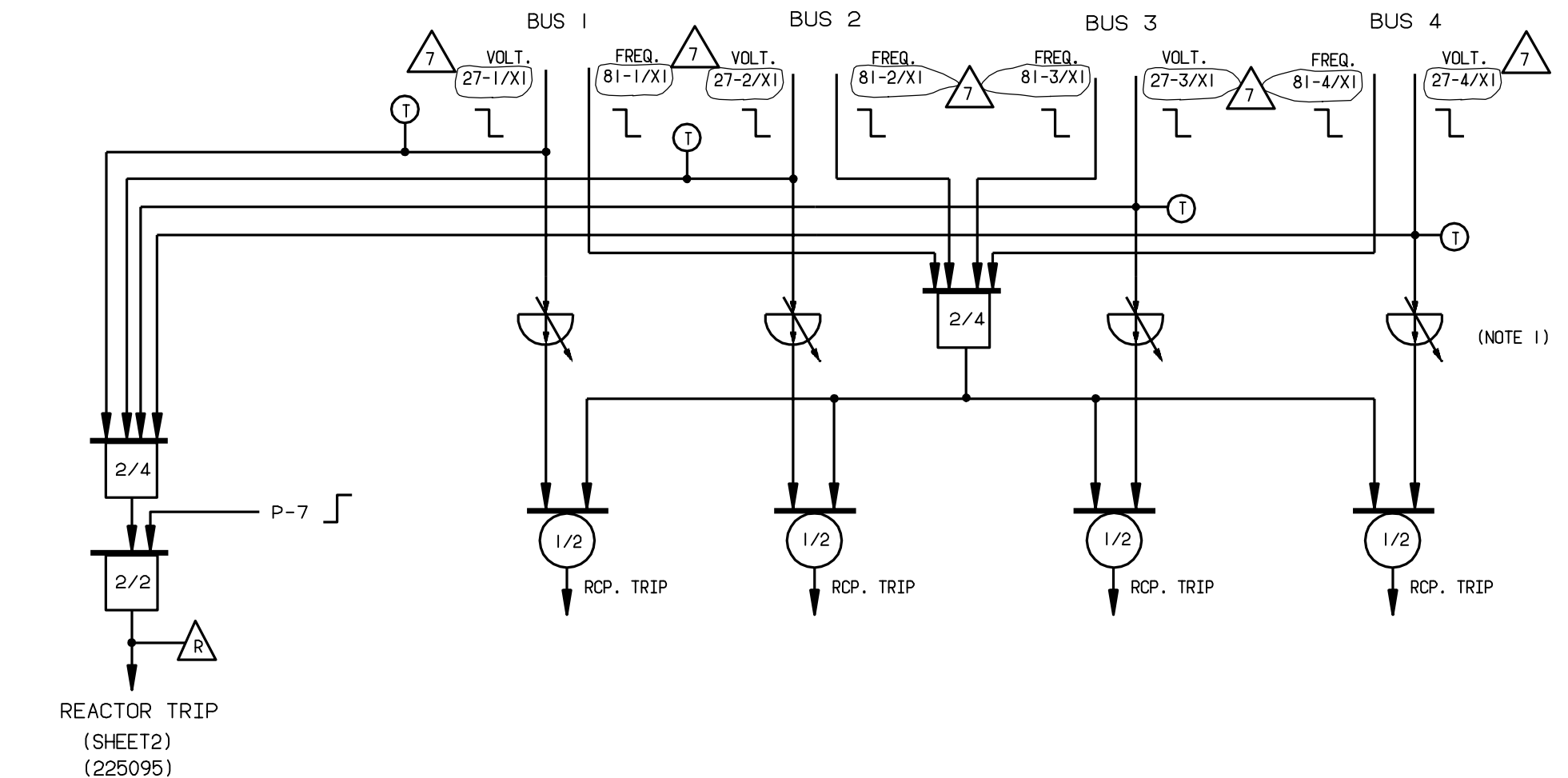
THIS DRAWING CONTAINS STEAM WHICH MUST BE CONTROLLED WITHIN THE DESIGN AS "CLASS A" ITEMS PER CI-240-1

08

TOW 7/14/99		THIS REV. IS NON-CLASS AS PER CI-240-1		GERARD BLENKLE		COMPUTER GENERATED DRAWING NOT TO BE HAND REVISED	
REV. 1		RELEASED FOR RECORD		DATE		TITLE: LOGIC DIAGRAM STEAM	
REV. 2		DT/TT		DESIGN		(GENERATOR) TRIP SIGNALS	
REV. 3				APPROVALS		(SHEET #10)	
REV. 4						USFAR FIGURE No. 7.2-10	
REV. 5						SCALE NONE	
REV. 6						DWG. NO. A225103-08	
REV. 7						INDIAN POINT #2	
REV. 8						08	



NOT REDUNDANT

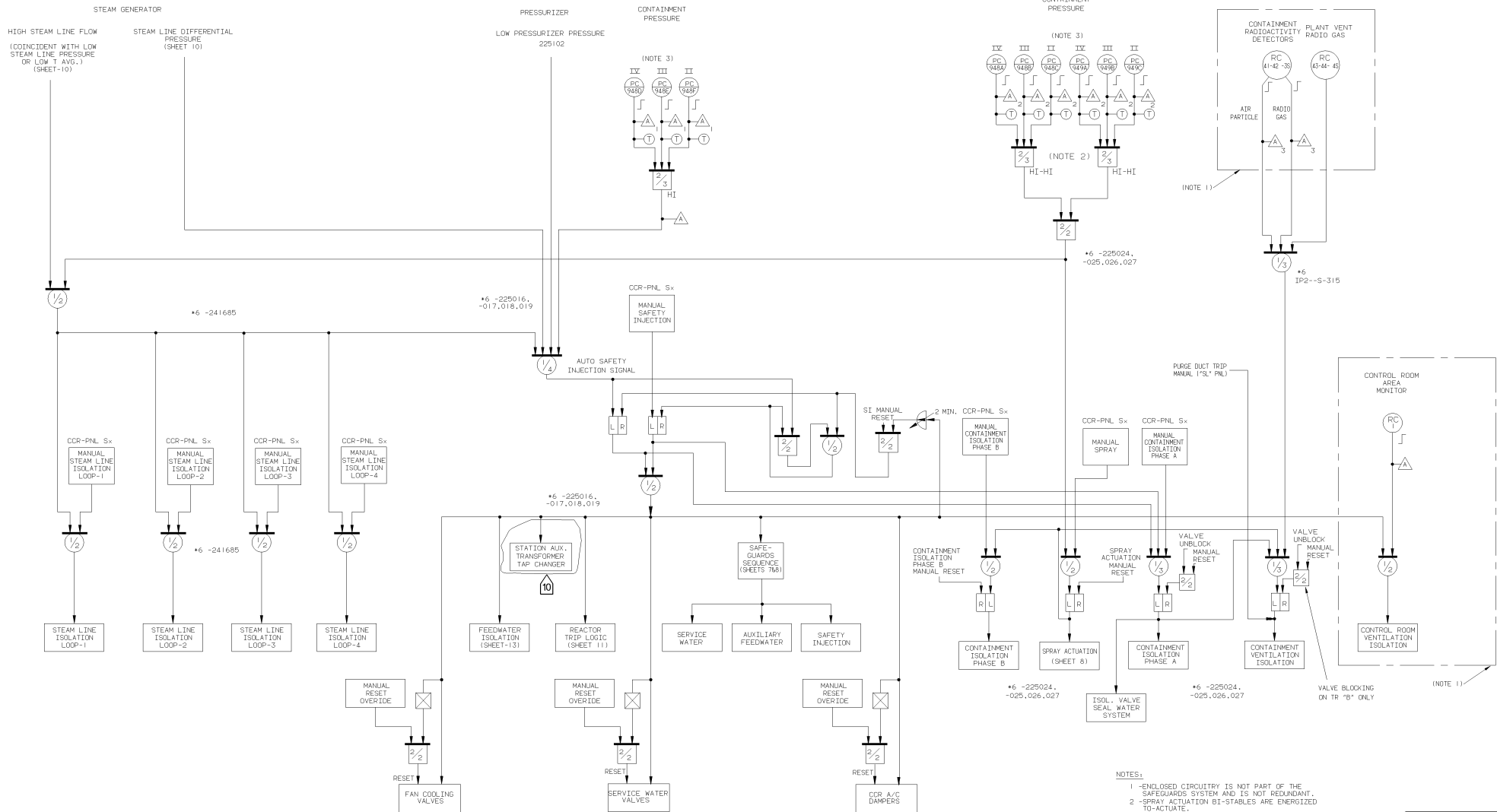


- NOTES:
- 1 -CIRCUITRY FOR RCP TRIP ON UNDERVOLTAGE PERTAINS TO BUS-CLEARING, IS NOT PART OF REACTOR PROTECTION SYSTEM, AND ITS NOT REDUNDANT.
 - 2 -FOR SYMBOLS AND REFERENCES SEE A225094.
 - 3 -THIS DRAWING SUPERCEDES WESTINGHOUSE DWG. 882D627, SHEET #10, MICROFILM 207B97.
 - 4 -FOR REACTOR PROTECTION SCHEMATIC SEE WHSE 110E073
 - 5 -THE AUTOMATIC CONTROL ROD WITHDRAWAL FEATURE IN PLANT OPERATION HAS BEEN PHYSICALLY DISABLED, ALLOWING ONLY THE AUTOMATIC CONTROL ROD INSERTION MODE TO BE IN EFFECT WHEN ROD CONTROL IS IN AUTOMATIC.

THIS DRAWING CONTAINS ITEMS WHICH
MUST BE CONTROLLED WITHIN CON EDISON AS
"CLASS A" ITEMS
PER CI-240-1

INDIAN POINT ENERGY CENTER – UNIT 2		
LOGIC DIAGRAM PRIMARY COOLANT SYSTEM TRIP SIGNALS & MANUAL TRIP (SHEET #11)		
	DWG NO. A225104	REV 7
SCALE	SHEET	

7	INCORPORATED EC 8954	07/24/08	SM	APPROVAL SIGNATURES ON FILE
REV	DESCRIPTION	DATE	BY	CHKD APP.



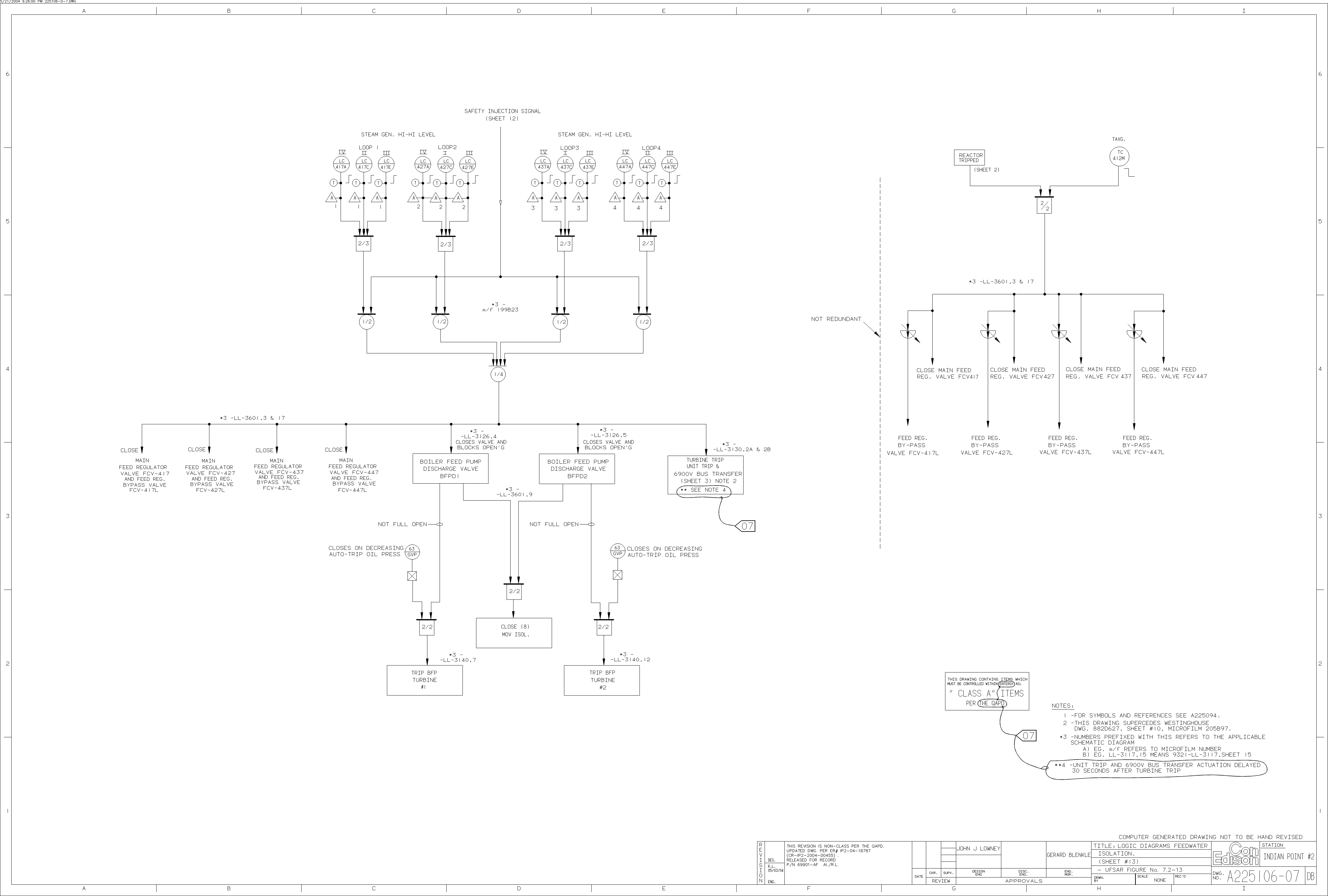
NOTES:

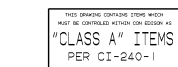
- 1 - ENCLOSED CIRCUITRY IS NOT PART OF THE SAFEGUARDS SYSTEM AND IS NOT REDUNDANT.
- 2 - SPRAY ACTUATION BI-STABLES ARE ENERGIZED TO-ACTUATE.
- 3 - PC-9488, PC-9489 AND PC-9490 ARE FED FROM A SEPARATE INVERTER POWER SUPPLY.
- 4 - FOR SYMBOLS AND REFERENCES SEE A225094.
- 5 - THIS DRAWING SUPERCEDES WESTINGHOUSE DWG. 3820927, SHEET #10, MICROFILM 202896.

*6 - NUMBERS PREFIXED WITH THIS REFERS TO THE APPLICABLE SCHEMATIC DIAGRAM
 A) EG. IP2--S-203 MEANS IP2--S-000200
 B) EG. LL-3117.15 MEANS 9321-LL-3117, SHEET 15

THIS DRAWING CONTAINS ITEMS WHICH MUST BE CONTROLLED WITHIN CON Edison AS "CLASS A" ITEMS PER CI-240-1

COMPUTER GENERATED DRAWING NOT TO BE HAND REVISED				STATION:			
THIS REVISION IS NON-CLASS AS PER THE QAPD. UPDATED DRAWING PER MOD.PROC. DCP-02-2-005. DMD225105-48-01 ISSUED AS CONSTRUCTED. P.N. 2-005-02 MPH				TITLE: LOGIC DIAGRAM SAFEGUARDS ACTUATION SIGNALS (SHEET #12)			
DATE: _____				DESIGN: _____			
REVIEW: _____				SCALE: NONE			
APPROVALS: _____				DWG. NO. A225105-10 DB			





- 09

COMPUTER GENERATED DRAWINGS NOT TO BE HAND REVISED									
THIS REV IS NON-CLASS AS PER THE DAPD UPDATED DOW PER C# 200109050 RELEASED FOR RECORD 12-19-2001		JOHN J LOWMEY		GERARD BLENKLE		TITLE: LOGIC DIAGRAM ROD STOPS & TURBINE LOADS OUTBACK. (Sheet #14) - UPSUR FIGURE NO. 7.2-14 - SCALE NONE		Station INDIAN POINT #2	
PW ENG.		DATE 12-19-2001		DESIGNED REVIEW		DESIGNED APPROVALS		DWG. NO. A225107-09	

REVISIONS

V.I.
4/18/99

02

THIS REVISION
IS NON-CLASS
PER CI-240-1
UPDATED DWG.
TO INCLUDE
UFSAR FIG. NO.
IN TITLE
P/N 69911-NP
RELEASED
FOR RECORD
DLA
4/18/99

STRATUS
ENGINEERING

AL	-	Alarm
Buf	-	Buffer
f	-	Special Function (such as a pressure compensation unit or lead/log compensation)
FC	-	Flow controller (off-on unless output signal is shown)
FI	-	Flow Indicator
FT	-	Flow Transmitter
Hi L	-	High Level
Hi LRT	-	High Level Reactor Trip
Hi PRT	-	High Pressure Reactor Trip
I/I	-	Isolation Current Repeater
ISOL	-	Isolation (other than I/I)
LC	-	Level Controller (off-on unless output signal is shown)
LI	-	Level Indicator
L-Low	-	Low Level
Lo L	-	Low Level
Lo Lo L	-	Low Low Level
Lo LRT	-	Low Level Reactor Trip
Lo Lo LRT	-	Low Low level Reactor Trip
Lo PRT	-	Low Pressure Reactor Trip
L _{ref}	-	Programmed Reference Level
LT	-	Level Transmitter
NC	-	Nuclear Flux Controller
NE	-	Nuclear Detector
NI	-	Nuclear Flux Indicator
NQ	-	Nuclear Power Supply
PC	-	Pressure controller (off-on unless output signal is shown)
PI	-	Pressure Indicator
P _{ref}	-	Programmed Reference Pressure
PS	-	Power Supply
PT	-	Pressure Transmitter
R/I	-	Resistance to Current Converter
S	-	Control channel transfer switch (used to maintain auto channel during test of the protection channel)
SI	-	Safety Injection
T	-	Built-in Test Point
TE	-	Temperature Element
TJ	-	Test Signal Insertion Jack
TP	-	Test Point
ΦU,L	-	Out of core upper or lower ion chamber flux signals

02

NI

STATION- INDIAN POINT 2

UFSAR FIGURE NO. 7.2-28

DRAWN BY REPRO

CHECKED

SCALE NONE

J.O. 32357-00

APPROVALS

CHIEF
DESIGN
ENG.DE
ENG.

ENG.

CONSOLIDATED EDISON CO. OF N.Y., INC.

DWG. NO. E 243311-02

RECORDED

REVISIONS

REV	0
-----	---

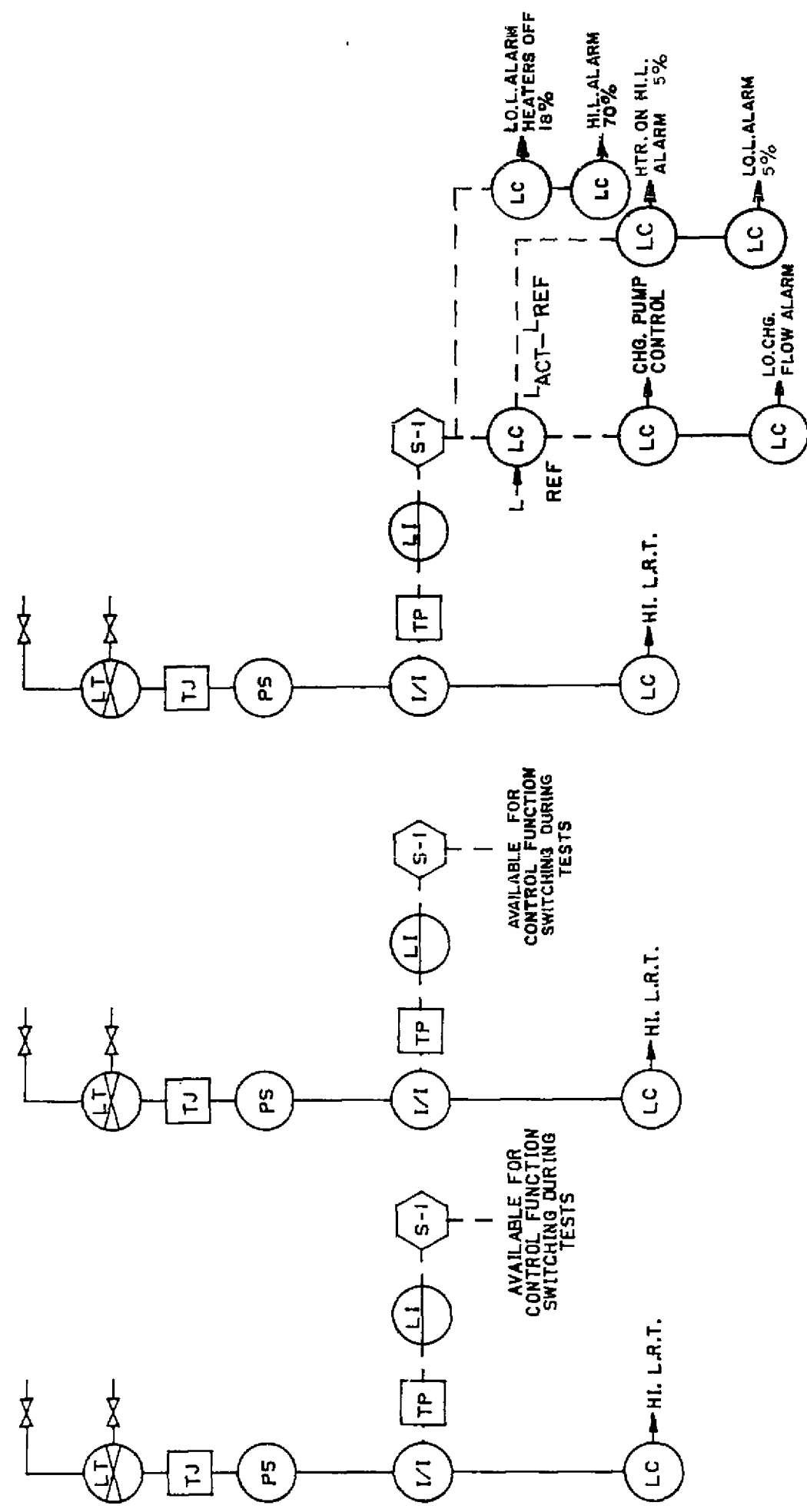
THIS REV.
IS NON-
CLASS
AS PER
CI-240-1
RELEASED
FOR INFO
ONLY
PN 32357
4-24-85

V.I.
4/18/99

01

THIS REVISION
IS NON-CLASS
PER CI-240-1
UPDATED DWG.
TO INCLUDE
UFSAR FIG. NO.
IN TITLE
P/N 69911-NP
RELEASED
FOR RECORD
DLA
4/18/99

STRATUS
ENGINEERING



PRESSURIZER LEVEL CONTROL AND PROTECTION SYSTEM

STATION- INDIAN POINT 2
(UFSAR FIGURE NO. 7.2-20)

DRAWN BY	REPRO	CHECKED
SCALE	NONE	J. O. 32357-00

01

CHIEF DESIGN ENG.
ENG. <i>G. B. R. 7/13/85</i>
ENG. <i>B. J. H. 9/9/85</i>

APPROVALS

CONSOLIDATED EDISON CO. OF N.Y., INC.

DWG. NO. E 243313-01

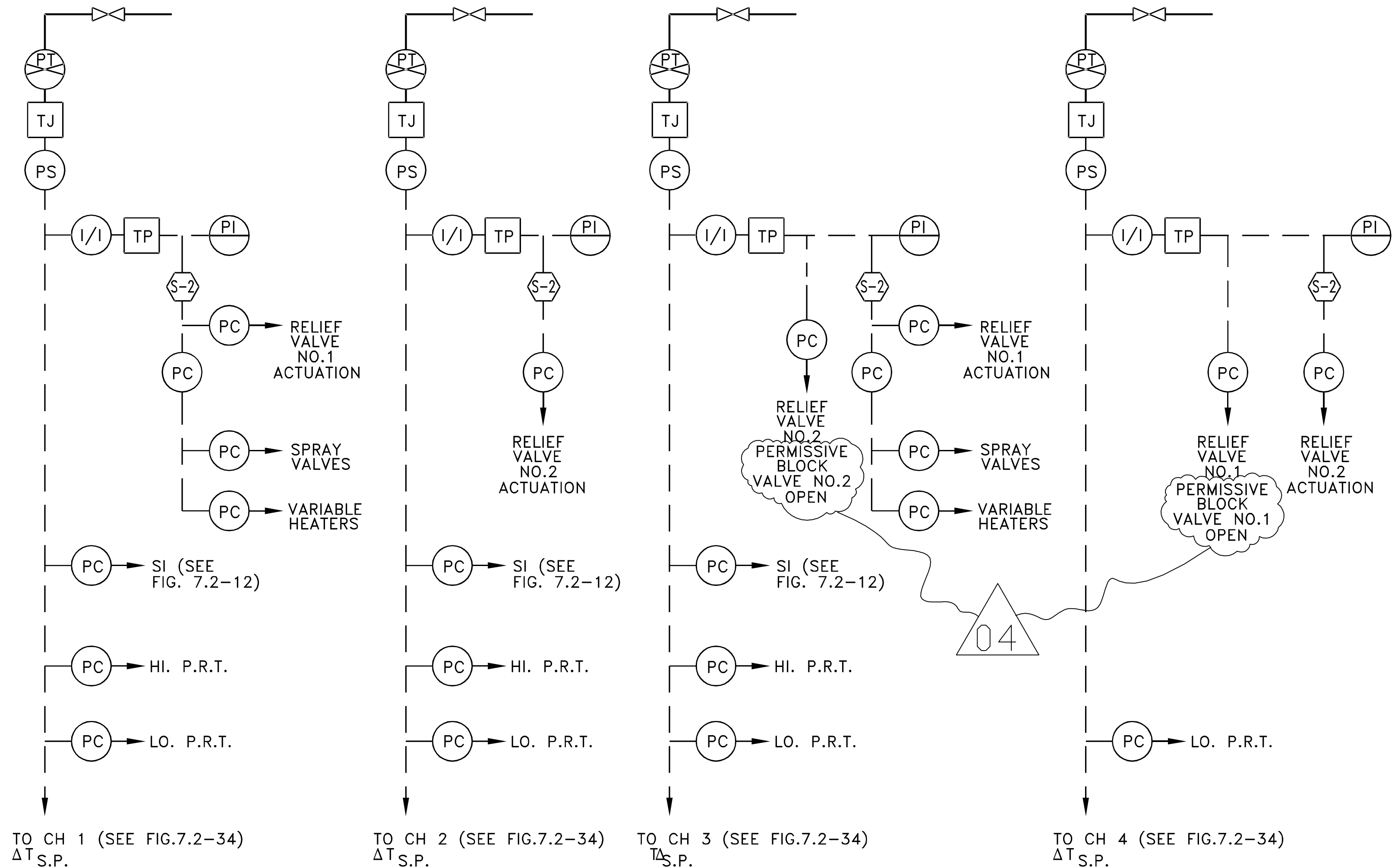
RECORDED

MI

04	INCORPORATED EC-7829	05/18/08	JS	APPROVAL SIGNATURES ON FILE	
REV	DESCRIPTION	DATE	BY	CHK'D	APP.
REVISIONS					

LEGEND

S-2 CHANNEL 1,2,3,4
SELECTOR SWITCH



PRESSURIZER PRESSURE CONTROL AND PROTECTION SYSTEM

STATION- INDIA POINT 2

UFSAR FIGURE NO. 7.2-21

DRAWN BY REROO CHECKED

SCALE NONE J.O. 32357-00

APPROVALS

CHIEF DESIGN ENG.

ENG. 3.11/11/85

CONSOLIDATED EDISON CO. OF N.Y., INC.

DWG. NO. E 243314-04

RECORDED

MI

REVISIONS

0

THIS REV.
IS NON-
CLASS
AS PER
CI-240-1
RELEASED
FOR INFO
ONLY
PN 32357
4-24-85

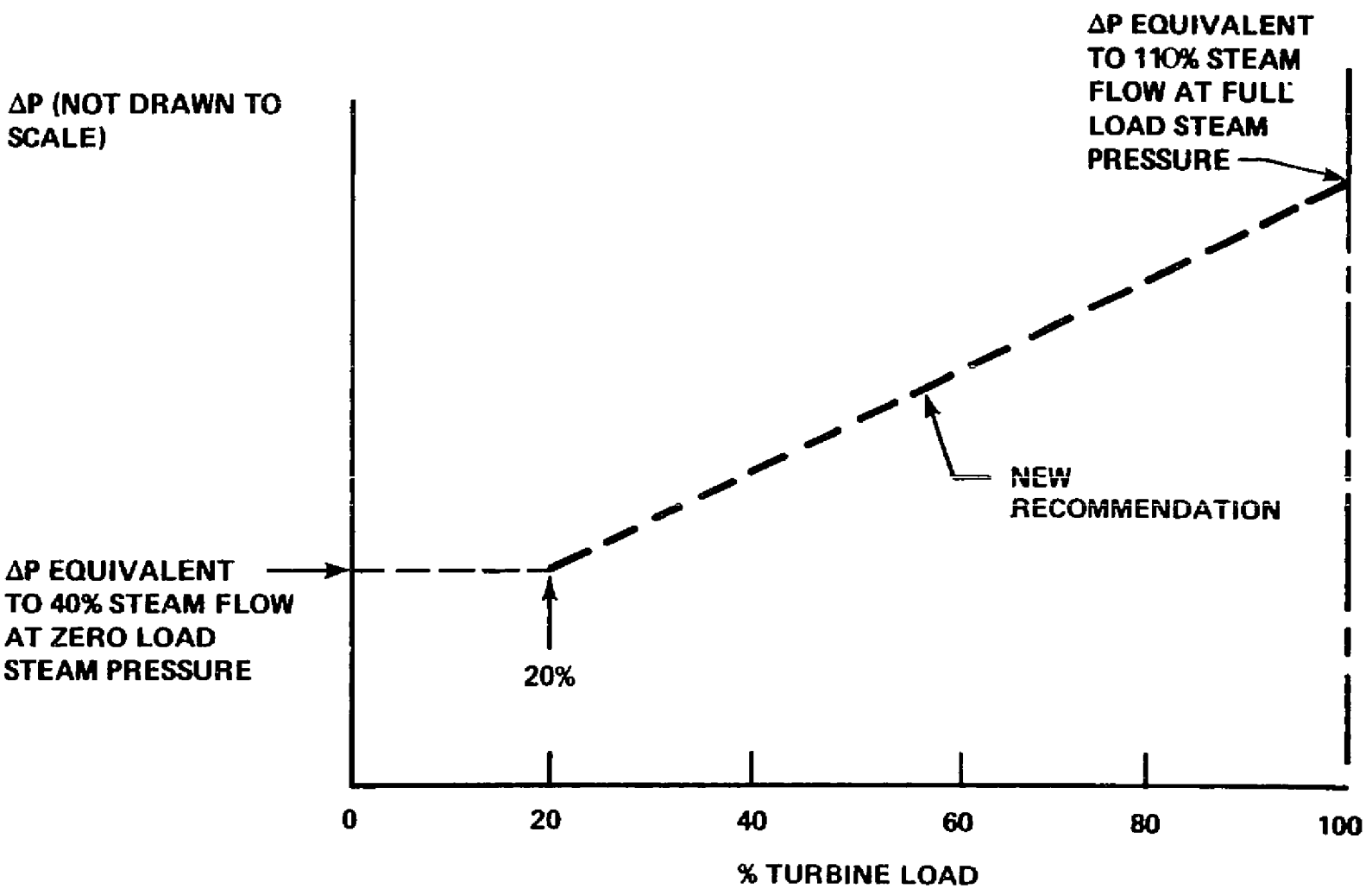
V.I.
4/18/99

01

THIS REVISION
IS NON-CLASS
PER CI-240-1
UPDATED DWG.
TO INCLUDE
UFSAR FIG. NO.
IN TITLE
P/N 69911-NP
RELEASED
FOR RECORD
DLA
4/18/99

STATUS
ENGINEERING

ΔP (NOT DRAWN TO
SCALE)



01

MI

STATION- INDIAN POINT 2
(UFSAR FIGURE NO. 7.2-22)

DRAWN BY REPRO CHECKED
SCALE NONE J.O. 32357-00

APPROVALS

CHIEF
DESIGN
ENG. [Signature] 2/19/89
ENG. [Signature] 3/13/85
DE
ENG. [Signature] 9/9/85

CONSOLIDATED EDISON CO. OF N.Y., INC.
DWG. NO. E 243315-01
RECORDED

REVISIONS

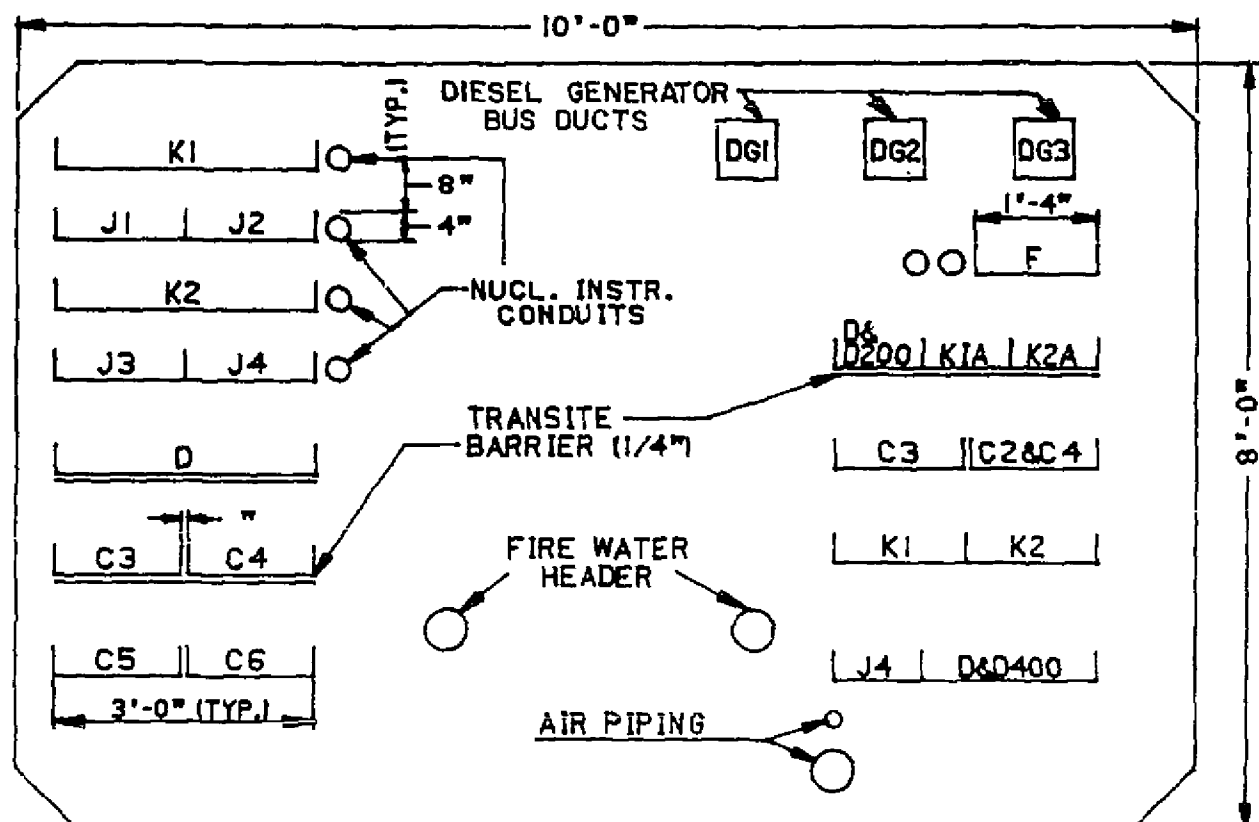
0

THIS REV.
IS NON-
CLASS
AS PER
CI-240-1
RELEASED
FOR INFO
ONLY
PN 32357
4-24-85

V.I.
4/18/99 01

THIS REVISION
IS NON-CLASS
PER CI-240-1
UPDATED DWG.
TO INCLUDE
UFSAR FIG. NO.
IN TITLE
P/N 69911-NP
RELEASED
FOR RECORD
DLA
4/18/99

STRATUS
ENGINEERING



TYPICAL SECTION-CABLE TUNNEL

- K1** CONTROL TRAY ONE CHANNEL (FOR VALVE CONTROL) ETC
J1-J2 2 INSTR TRAYS WITH BARRIERS-2 CHANNELS
K2 CONTROL TRAY ONE CHANNEL (FOR VALVE CONTROL) ETC
J3-J4 2 INSTR TRAYS WITH BARRIERS-2 CHANNELS
D MAX #12 WIRE FOR SMALL POWER & ONE CONTROL CHANNEL
C4 (480 V HEAVY POWER) CONT RECIRC FAN 21 SAF INJ PUMP 21 RECIRC PUMP 21
C3 (480 V HEAVY POWER) CONT RECIRC FAN 25 RES HT REM PUMP 22 SAF INJ PUMP 23 CONT RECIRC FAN 23
C6 (480 V HEAVY POWER) CONT RECIRC FAN 22 SAF INJ PUMP 22
C5 (480 V HEAVY POWER) RECIRC PUMP 22 RES HT REM PUMP 22 CONT RECIRC FAN 24

E (1ST CHANNEL) DC SUPPLY (EMERG) DIESEL GEN CONT PNL 23 LTG & MOTOR FEEDERS
D & D200 - KIA-K2A DIESEL GEN CONTROL 3 CHANNELS
C3 (480V HEAVY POWER) COMP CLG PUMP 23 MCC27 FEEDER MCC 26B FEEDER LTG SWGR TRANSF 22 CHARGING PUMP 22 CHARGING PUMP 23 CONT SPRAY PUMP 22
C2 (480V HEAVY POWER) DC EMER LTG FEEDER
C4 CONT SPRAY PUMP 21 COMP COOLING PUMP 21 COMP COOLING PUMP 22 MCC 26A FEEDER LTG SWGR TRANSF 23 CHARGING PUMP 21

K1-K2 CONTROL, 2 CHANNELS
J4 INSTR 1 CHANNEL
D&D400 MISC SMALL POWER & CONTROL 1 CHANNEL

01

MI

STATION- INDIAN POINT 2
(UFSAR FIGURE NO. 7.2-24)

DRAWN BY *REPRO* CHECKED

SCALE *NONE*

J.O. 32357-00

APPROVALS

CHIEF
DESIGN
ENG.

ENG.

DE
ENG.

CONSOLIDATED EDISON CO. OF N.Y., INC.

DWG. NO. E 243317-01

RECORDED

REVISIONS

613 0

THIS REV.
IS NON-
CLASS
AS PER
CI-240-1
RELEASED
FOR INFO
ONLY
PN 32357
4-24-85

V.JAYARAMAN
07-12-99

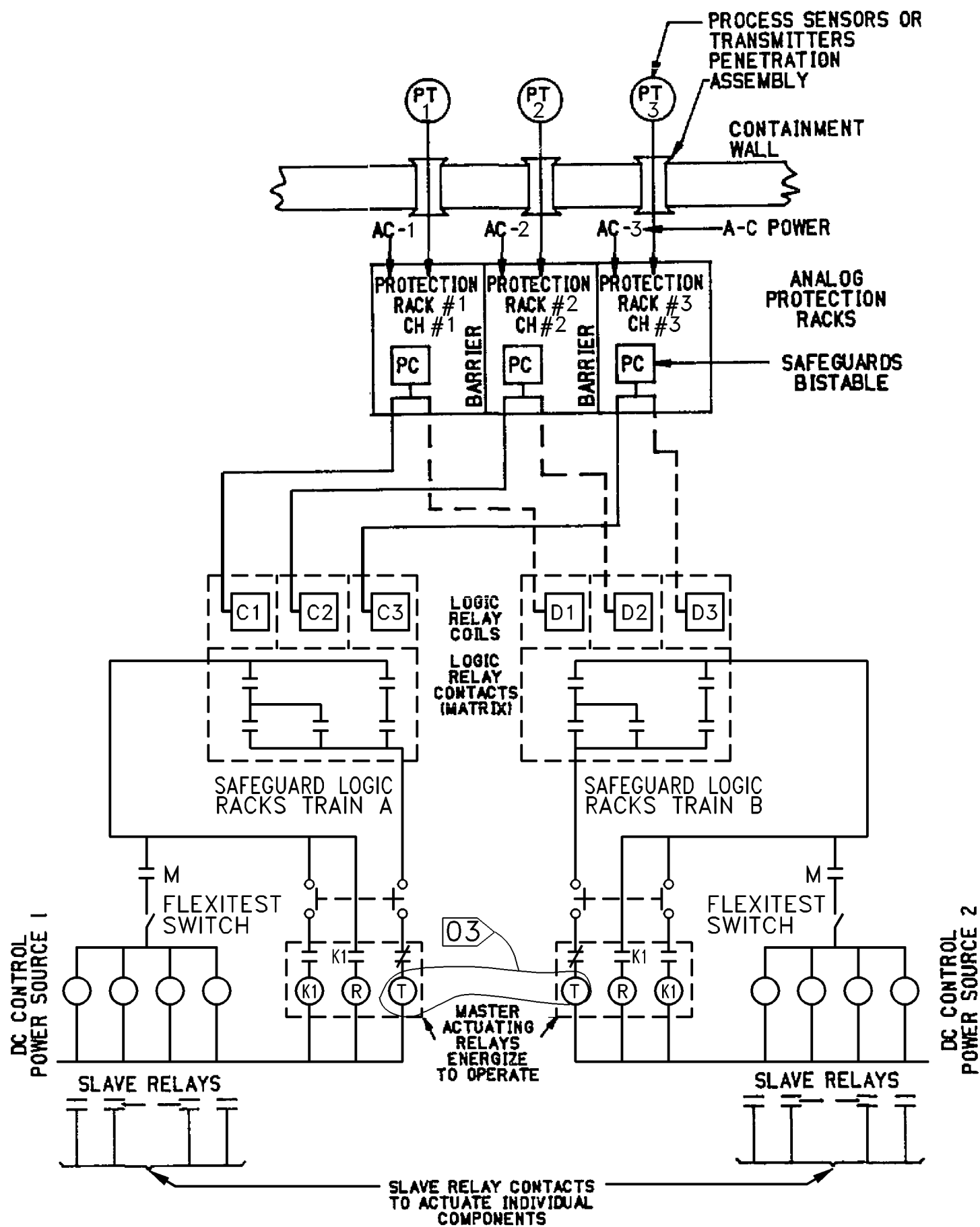
01

THIS REVISION
IS NON-CLASS
PER CI-240-1
UPDATED DWG.
PER CRS
#199806049;
FILE O-2014.
RELEASED
FOR RECORD
P.N.69911-NP
G.To.

V.JAYARAMAN
06/26/00

03

THIS REVISION
IS NON-CLASS
PER CI-240-1
UPDATED DWG.
PER CRS
#199800127
RELEASED
FOR RECORD
P.N.69982-CD
AG/VJ



SAFEGUARD ACTUATION CIRCUITRY
AND HARDWARE CHANNELIZATION

MI

STATION- INDIAN POINT 2
UFSAR FIGURE NO. 7.2-15

DRAWN BY REPRO

CHECKED

SCALE NONE

J. O. 32357-00

APPROVALS

CHIEF
DESIGN
ENG.

ENG.

DE
ENG.

CONSOLIDATED EDISON CO. OF N.Y., INC.

DWG. NO. E 243318-03

RECORDED

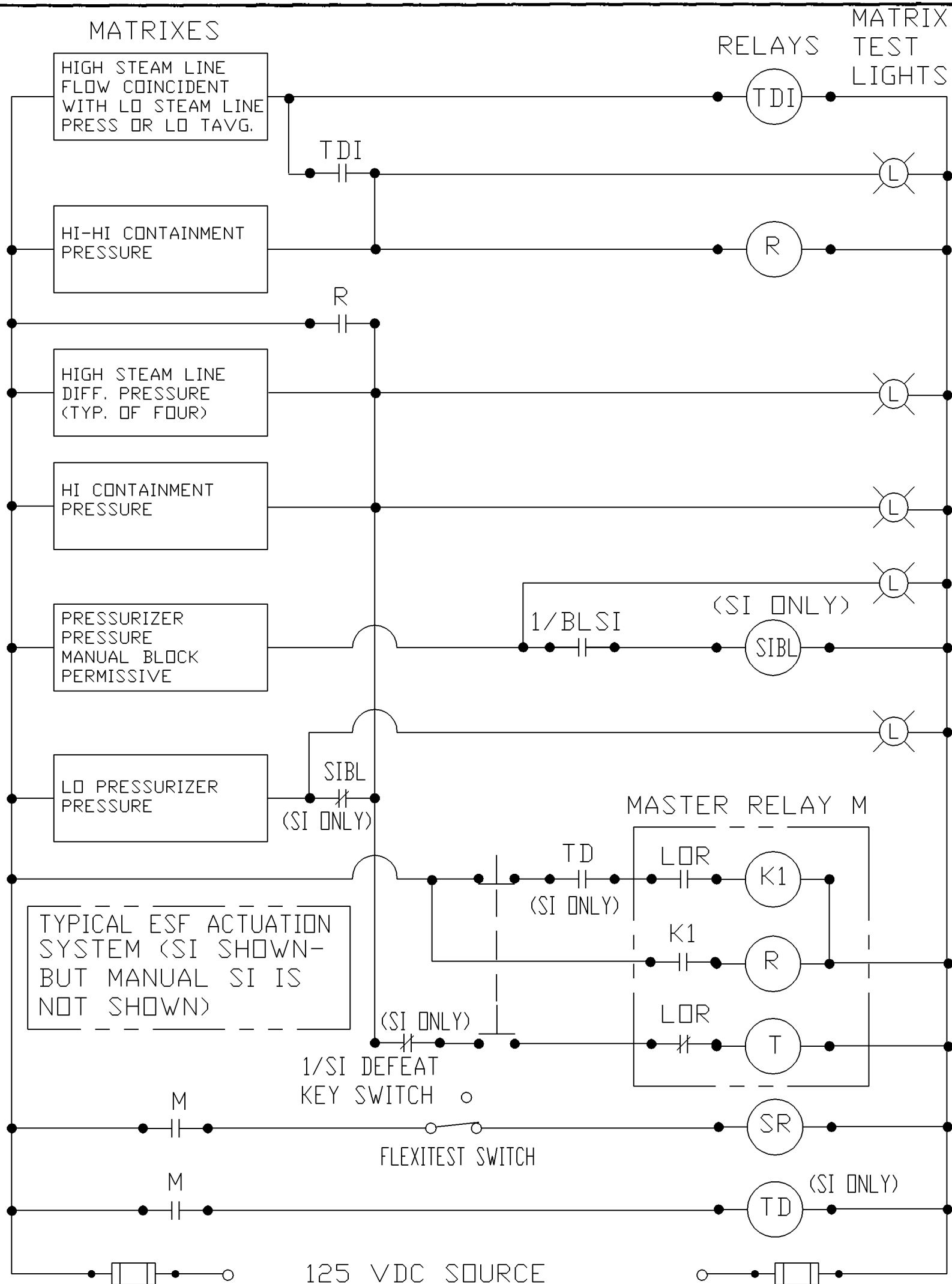
REVISIONS

REV	0
-----	---

THIS REV.
IS NON-
CLASS
AS PER
CI-240-1
RELEASED
FOR INFO
ONLY
PN 32357
4-24-85

V. JAYARAMAN 6/26/00	02
-------------------------	----

THIS REVISION
IS NON-CLASS
PER CI-240-1
UPDATED DWG.
PER CRS
199800127
THE ENTIRE
DWG IS
REDRAWN.
RELEASED
FOR RECORD
P/N 69982-CD
AG/VJ



SIMPLIFIED DIAGRAM FOR OVERALL LOGIC RELAY TEST SCHEME

MI

STATION- INDIAN POINT 2
UFSAR FIGURE NO. 7.2-16

DRAWN BY REPRO

CHECKED

SCALE NONE

J. O. 32357-00

APPROVALS

CHIEF
DESIGN
ENG.

ENG.

v. ENG.

CONSOLIDATED EDISON CO. OF N.Y., INC.

DWG. NO. E 243319-02

RECORDED

REVISIONS

68210
THIS REV.
IS NON-
CLASS
AS PER
CI-240-1
RELEASED
FOR INFO
ONLY
PN 32357
4-24-85

V. JAYARAMAN
08-24-99

1

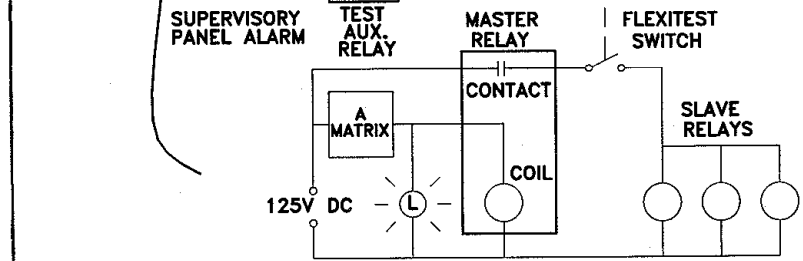
THIS REV IS
NON CLASS AS
PER CI-240-1.
REVISED DWG
PER CRS
#199806043,
FILE 0-2016.
RELEASED FOR
RECORD.
P.N.69911-NP
G.To.

V. INGRAVALLO
11/15/99

02

THIS REVISION
IS NON-CLASS
PER CI-240-1
UPDATED DWG.
TO INCLUDE
UFSAR FIG. NO.
IN TITLE
P/N 69911-NP
RELEASED
FOR RECORD
SW/PP

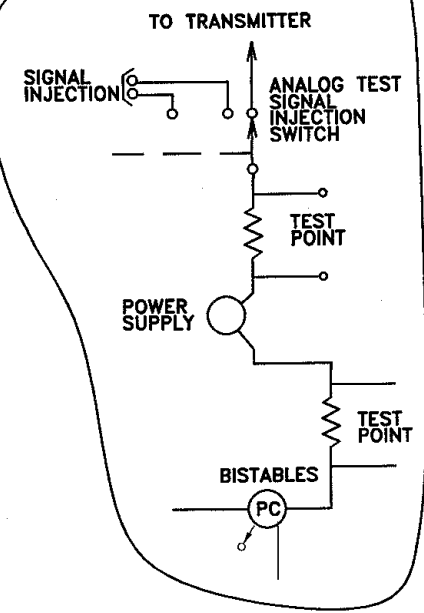
DUPLICATE
FOR
"B" MATRIX



ANALOG AND LOGIC CHANNEL TESTING

3

(ALTERNATE)



3	INCORPORATED DMD243320-AA, ER-04-2-033	4-13-05	DM	AS	VA
REV	DESCRIPTION	DATE	BY	CHKD	APP.

REVISIONS	
1	STATION- INDIAN POINT 2 UFSAR FIGURE NO. 7.2-17
2	DRAWN BY REPRO CHECKED
3	SCALE NONE J. O. 32357-00

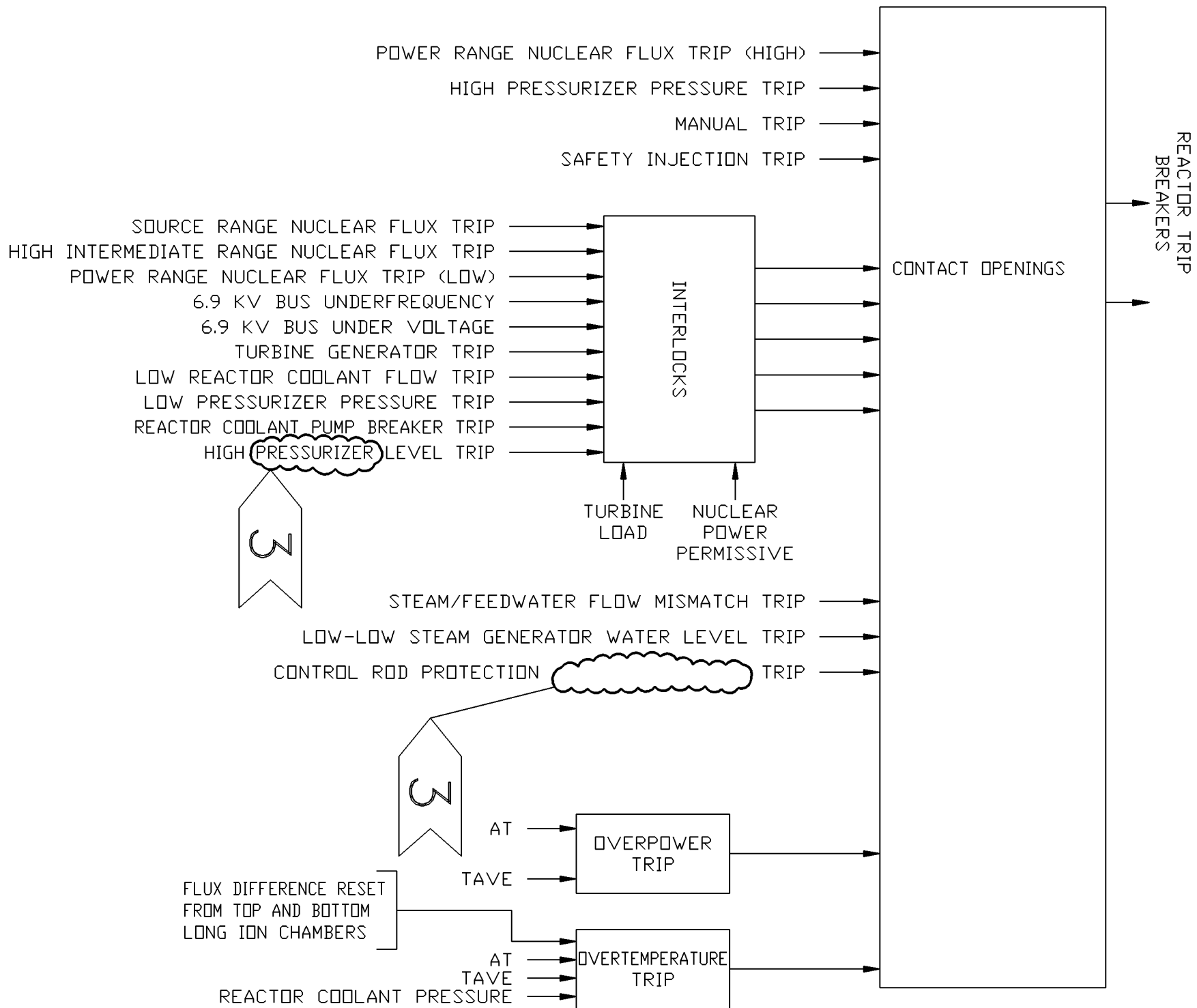
APPROVALS
CHIEF DESIGN ENG.
ENG. <i>[Signature]</i>
DE ENG. <i>[Signature]</i>

CONSOLIDATED EDISON CO. OF N.Y., INC.
DWG. NO. E 243320-3
RECORDED

57952

REVISIONS	
0	12/2/85
THIS REV. IS NON-CLASS AS PER CI-240-1 RELEASED FOR INFO ONLY PN 32357 4-24-85	
2	3/28/00
THIS REVISION IS NON-CLASS PER CI-240-1 UPDATED DWG. PER CRS # 199904040, FILE 0-2814. RELEASED FOR RECORD P/N 69982-CM SG	
3	2/12/01
THIS REVISION IS NON-CLASS PER CI-240-1 UPDATED DWG. TO CORRECT TYPO & REMOVE S.P. VALUE FOR RECORD P/N 69901-AF JH	

BLOCK DIAGRAM -
REACTOR PROTECTION SYSTEMS



STATION- INDIAN POINT 2
UFSAR FIGURE NO. 7.2-18
DRAWN BY REPEO CHECKED
SCALE NONE J.O. 32357-00

APPROVALS

CHIEF DESIGN
ENG. *[Signature]* 8/14/87
D.C. ENG. *[Signature]* 9/19/85

CONSOLIDATED EDISON CO. OF N.Y., INC.
DWG. NO. E 243321-3
RECORDED

MT

REVISIONS

VS

0

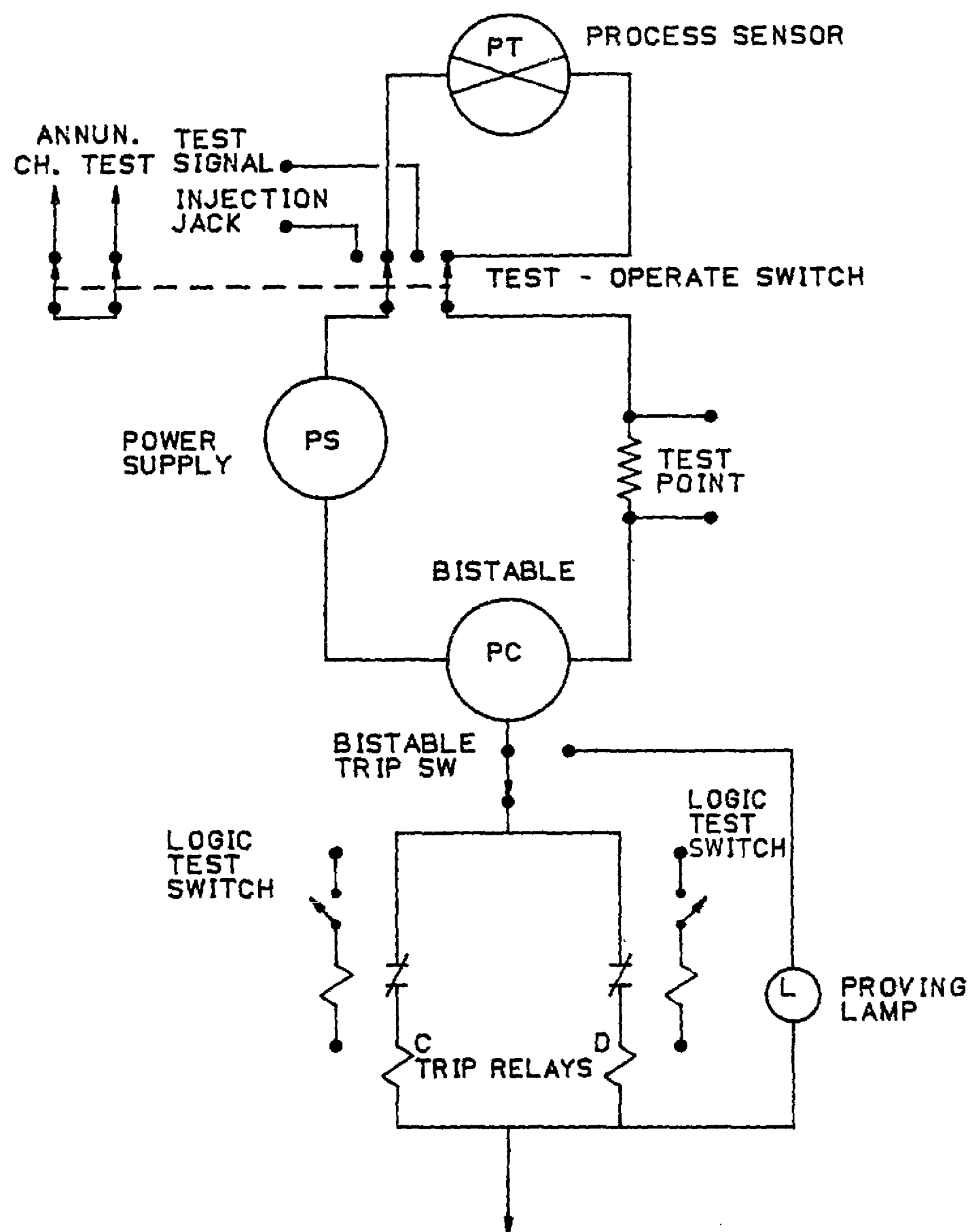
THIS REV.
IS NON-
CLASS
AS PER
CI-240-1
RELEASED
FOR INFO
ONLY
PN 32357
4-24-85

M.R.
05/29/01

01

THIS REVISION
IS NON-CLASS
PER THE QAPD.
UPDATED DWG.
TO INCLUDE
UFSAR FIG. NO.
IN TITLE
P/N 69901-AA
RELEASED
FOR RECORD
JH/T.D.
05/29/01

STRATUS
ENGINEERING



TYPICAL ANALOG CHANNEL TESTING ARRANGEMENT

01

MI

STATION- INDIAN POINT 2
UFSAR FIGURE NO. 7.2-25

DRAWN BY BEPRO CHECKED
SCALE NONE J. O. 32357-00

APPROVALS
CHIEF DESIGN ENG. 6/14/89
ENG. 7/13/85
DE ENG. 9/9/85

CONSOLIDATED EDISON CO. OF N.Y., INC.
DWG. NO. E 243322-01
RECORDED

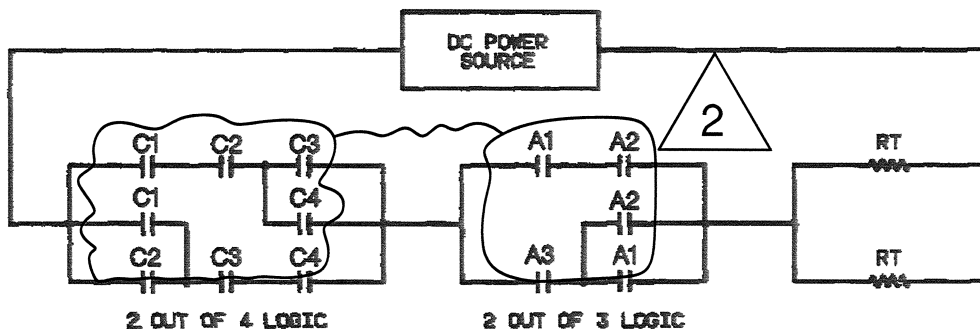
57952

REVISIONS

610 0

THIS REV.
IS NON-
CLASS.
AS PER
CI-240-1
RELEASED
FOR INFO
ONLY
PN32357
4-24-85

REVISION
5/25/88



2 OUT OF 4 LOGIC

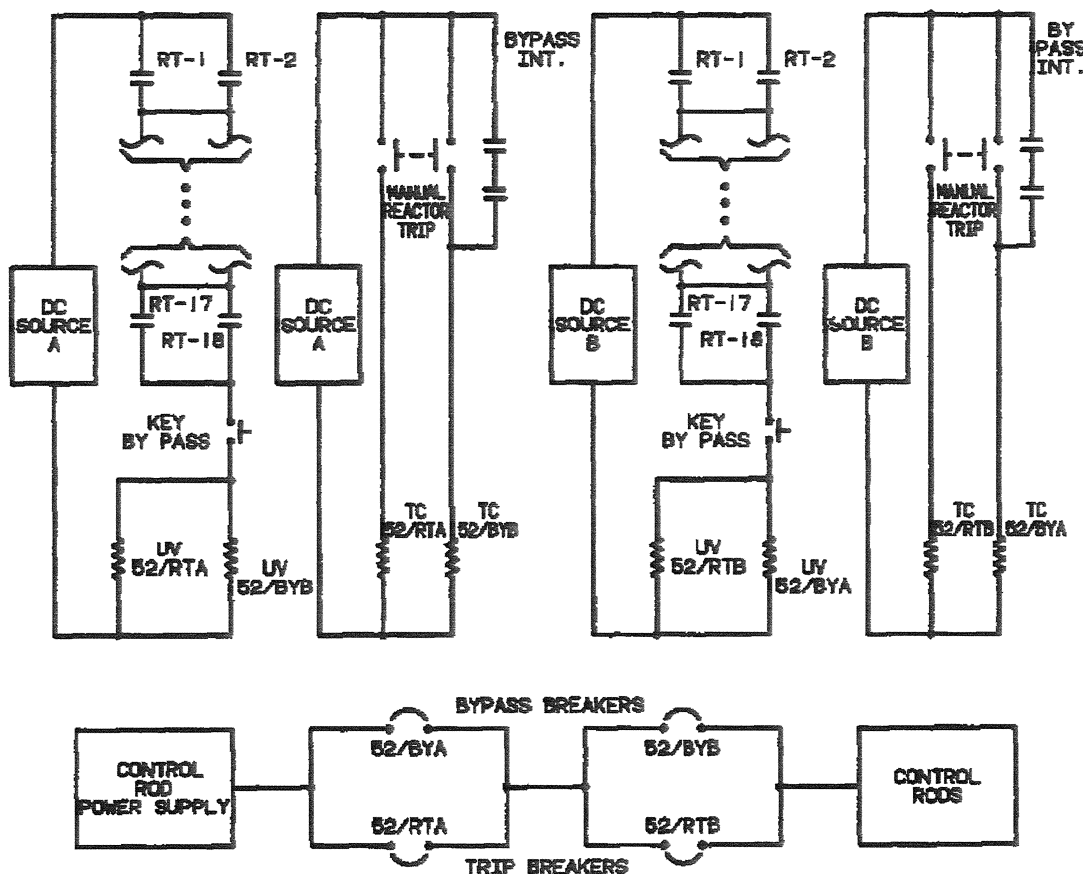
2 OUT OF 3 LOGIC

TYPICAL TRIP LOGIC

V.I.
4/18/99 01

THIS REVISION
IS NON-CLASS
PER CI-240-1
UPDATED DWG.
TO INCLUDE
UFSAR FIG. NO.
IN TITLE
P/N 69911-NP
RELEASED
FOR RECORD
DLA
4/18/99

STRATUS
ENGINEERING



2	INCORPORATED DRN-06-00911, ER-IP2-05-25318	3/14/06	JS	Rev 15/8	
REV	DESCRIPTION	DATE	BY	CHK'D	APP.
REVISIONS					

2

MI

STATION- INDIAN POINT 2

DRAWN BY REPRO CHECKED
SCALE NONE J.O. 32357-00

APPROVALS

CHIEF
DESIGN
ENG.

ENG. 67 3/14/06
DE ENG. J. Helfant 3/14/06

CONSOLIDATED EDISON CO. OF N.Y., INC.

DWG. NO. E 243323-2

RECORDED

REVISIONS

645 0

THIS REV.
IS NON-
CLASS
AS PER
CI-240-1
RELEASED
FOR INFO
ONLY
PN 32357
4-24-85

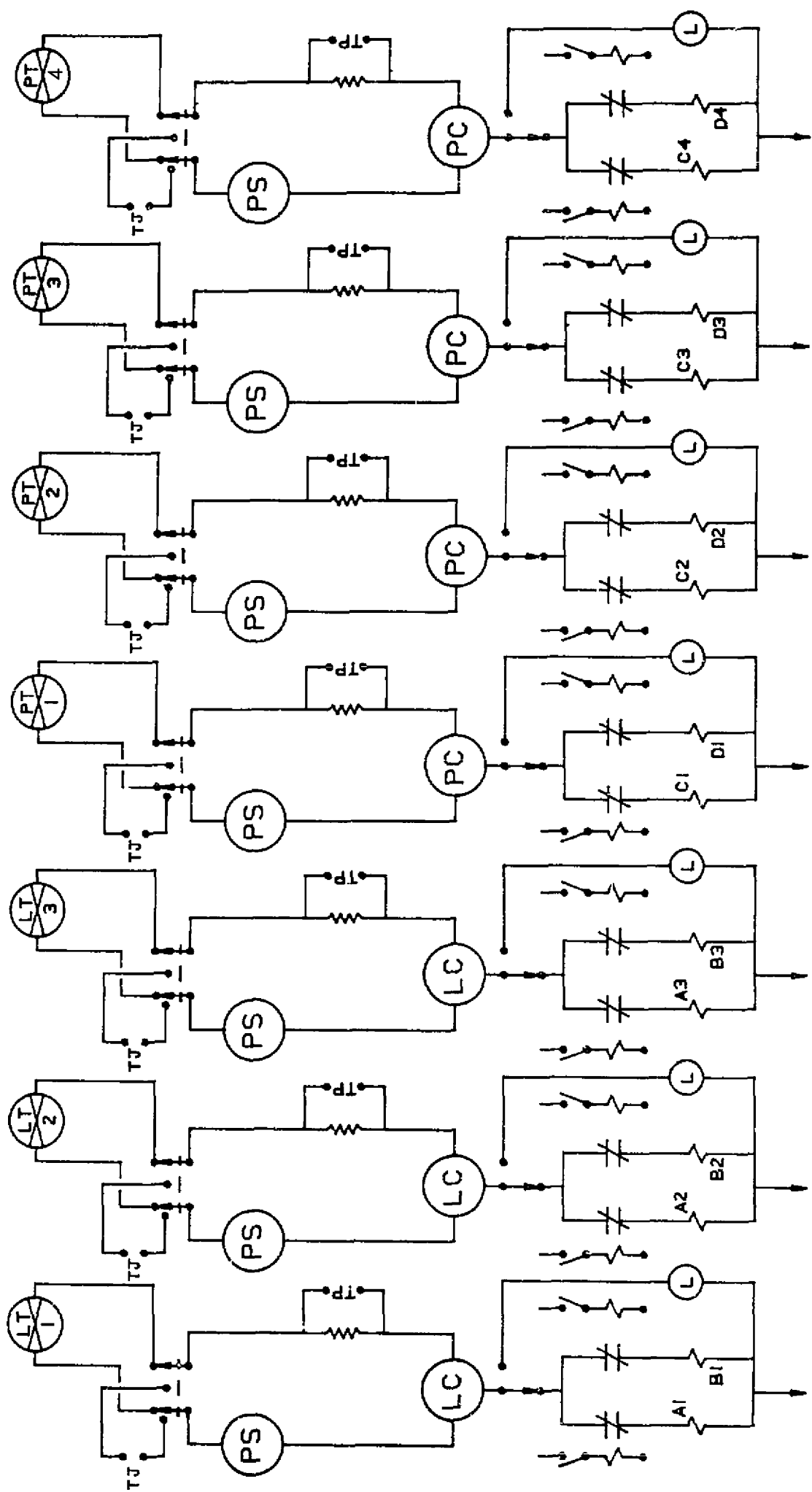
J. SCANDIFFIO
11-24-98 01

THIS REVISION
IS NON CLASS
AS PER CI-240-1.
REVISED DWG.
PER CITRS
#98-E06025,
FILE 0-2010.
RELEASED FOR
INFORMATION.
P.N. 69911-NP.
G.To.

V.I.
4/18/99 02

THIS REVISION
IS NON-CLASS
PER CI-240-1
UPDATED DWG.
TO INCLUDE
UFSAR FIG. NO.
IN TITLE
P/N 69911-NP
RELEASED
FOR RECORD
DLA
4/18/99

STATUS
ENGINEERING



TJ - TEST SIGNAL INSERTION JACK
TP - TEST POINT
NOTE - REDUNDANT CHANNELS
ARE ISOLATED
ANALOG CHANNELS

STATION- INDIAN POINT 2
UFSAR FIGURE NO. 7.2-27

DRAWN BY REPRO CHECKED
SCALE SCALE J. O. 32357-00

APPROVALS

CHIEF DESIGN ENG. [Signature] 2/14/87
ENG. [Signature] 3/12/87
ENG. [Signature] 7/1/85

CONSOLIDATED EDISON CO. OF N.Y., INC.

DWG. NO. E 243324-02

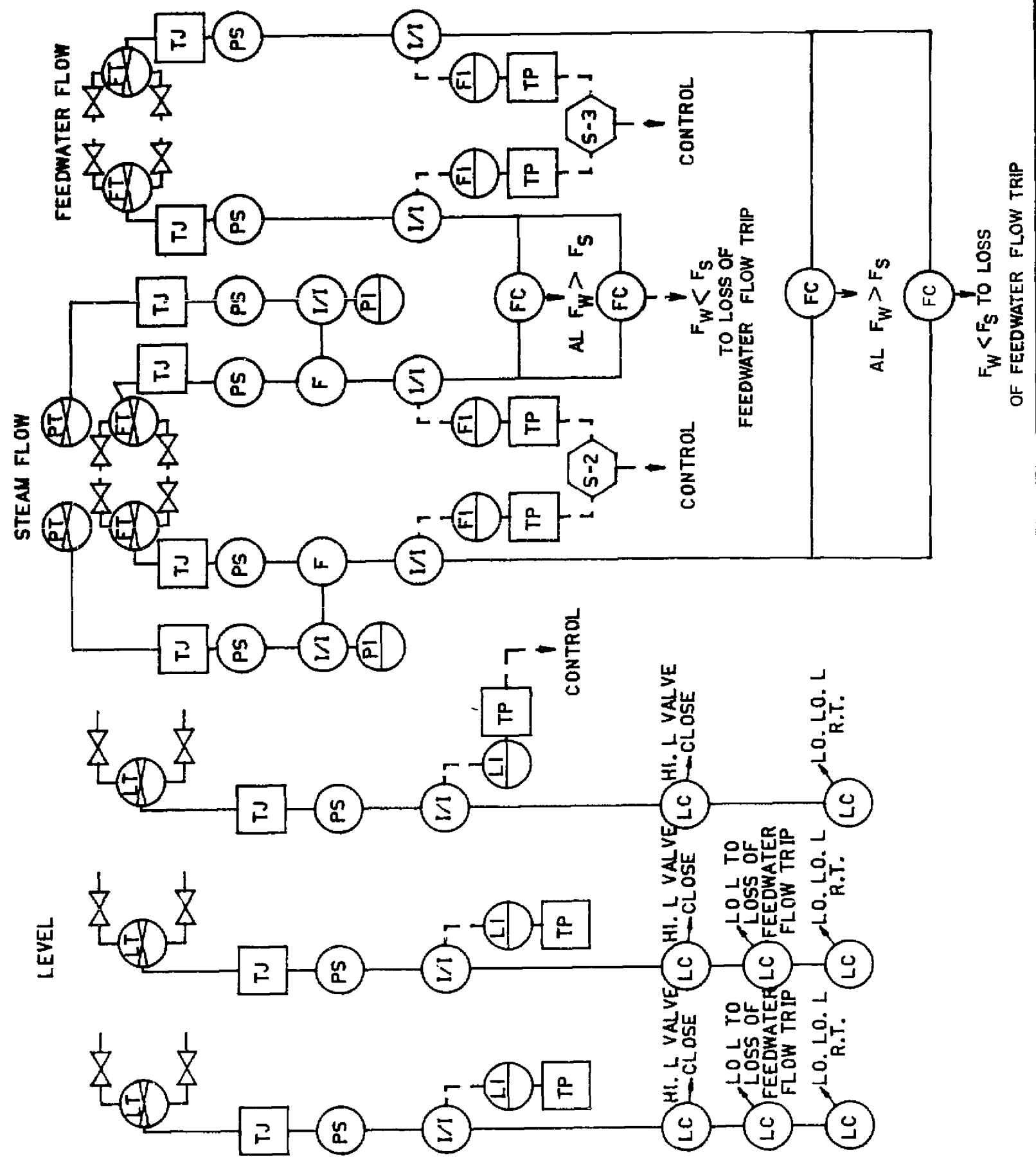
RECORDED

57952

REVISIONS	
19	0

THIS REV.
IS NON-
CLASS
AS PER
CI-240-1
RELEASED
FOR INFO
ONLY
PN 32357
4-24-85

V.I. 4/18/99	01
THIS REVISION IS NON-CLASS PER CI-240-1 UPDATED DWG. TO INCLUDE UFSAR FIG. NO. IN TITLE P/N 69911-NP RELEASED FOR RECORD DLA 4/18/99	
STRATUS ENGINEERING	



STATION- INDIAN POINT 2
UFSAR FIGURE NO. 7.2-32

DRAWN BY *REPRO* CHECKED
SCALE *NONE* J.O. 32357-00

01

APPROVALS

CHIEF DESIGN ENG. *[Signature]*

DESG. ENG. *[Signature]* 9/9/85

ENG. *[Signature]* 7/1/85

CONSOLIDATED EDISON CO. OF N.Y., INC.

DWG. NO. E 243328-01

RECORDED

REVISIONS

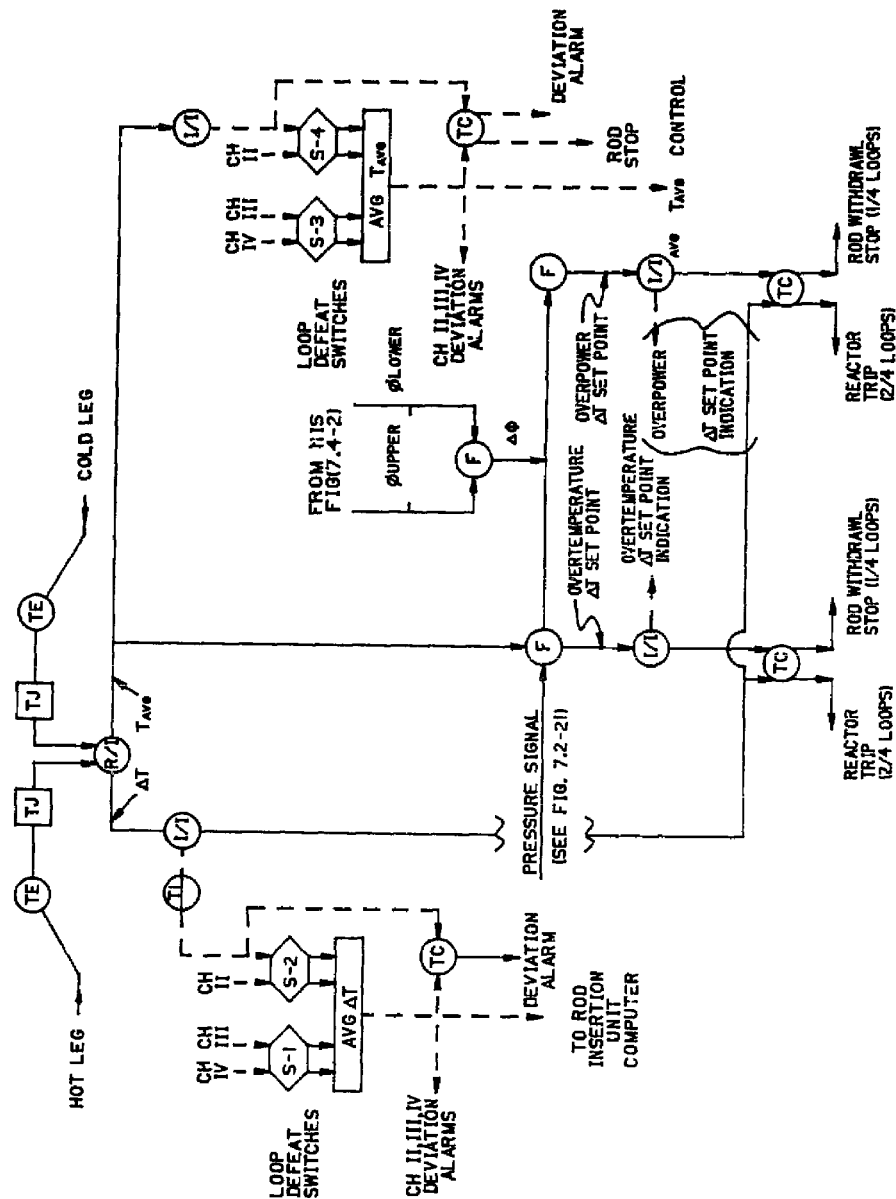
	2	0
--	---	---

THIS REV.
IS NON-
CLASS.
AS PER
CI-240-1
RELEASED
FOR INFO
ONLY
PN 32357
4-24-85

V.l.
4/18/99

0-

THIS REVISION
IS NON-CLASS
PER CI-240-1
UPDATED DWG
TO INCLUDE
UFSAR FIG. NO.
IN TITLE
P/N 69911-NP
RELEASED
FOR RECORD
DLA
4/18/99

STRATUS
ENGINEERING

T_{AVG}/ΔT CONTROL AND PROTECTION SYSTEM
(SINGLE CHANNEL)

STATION- INDIAN POINT 2

UFSAR FIGURE NO. 7.2-34

DRAWN BY *icetpku* CHECKED

SCALE NONE J. O. 32357-00

APPROVALS

CHIEF DESIGN ENG.	3/8	2/14/84
DE ENG.	3/11/84	9/9/84
ENG.	6/1/84	9/10/84

CONSOLIDATED EDISON CO. OF N.Y., INC.

DWG. NO. E 243330-01

RECORDED

57952

929D6 GEN ENG.