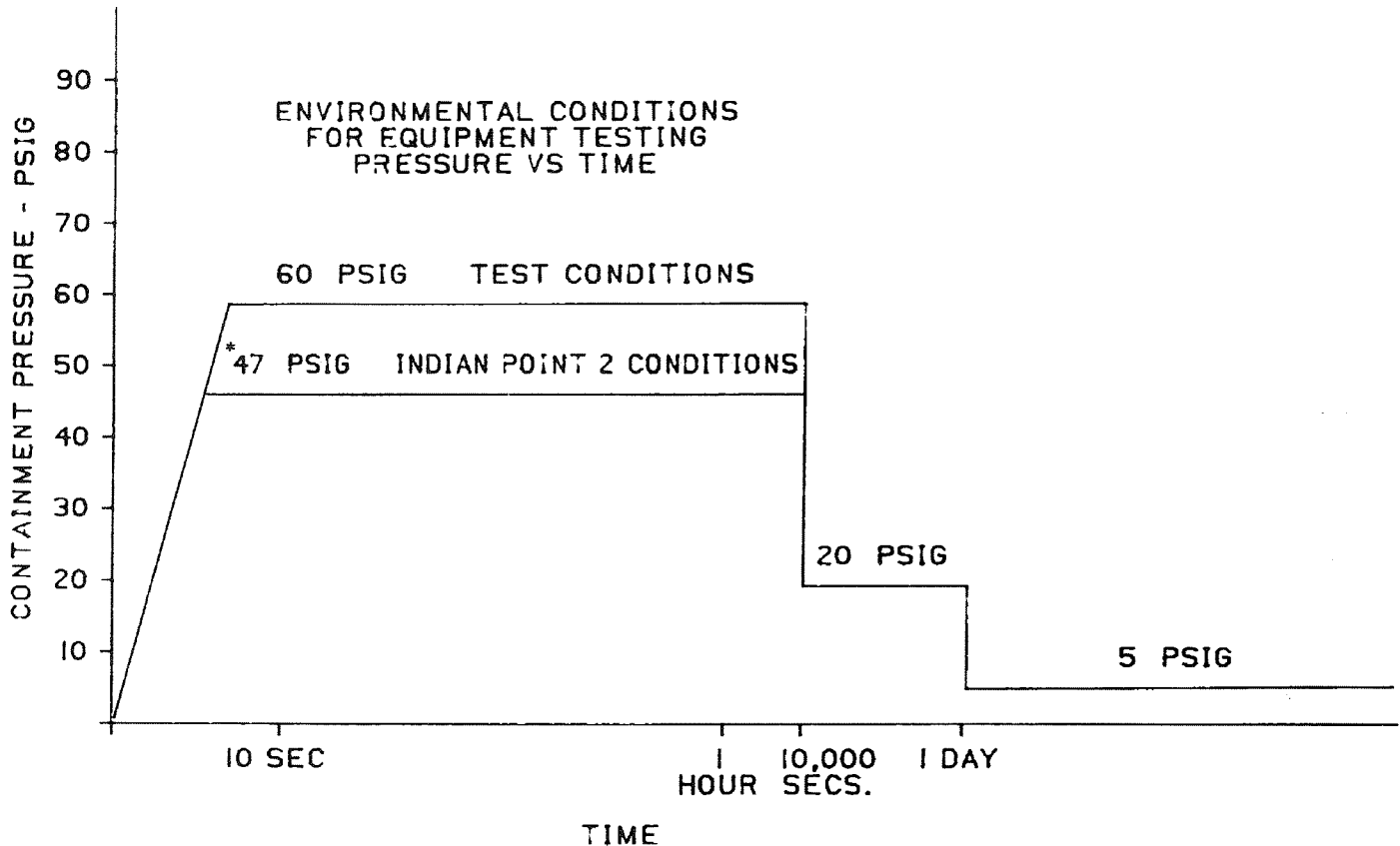


*40.6 PSIG BASED ON MAY 21, 1981 NRC STAFF SER
AND CONSOLIDATED EDISON RESPONSE OF
SEPTEMBER 4, 1981 (REFERENCE 11) TO THAT SER.
47 PSIG REMAINS THE CONTAINMENT DESIGN BASIS
AND PROVIDES ADDITIONAL MARGIN



INDIAN POINT UNIT No. 2

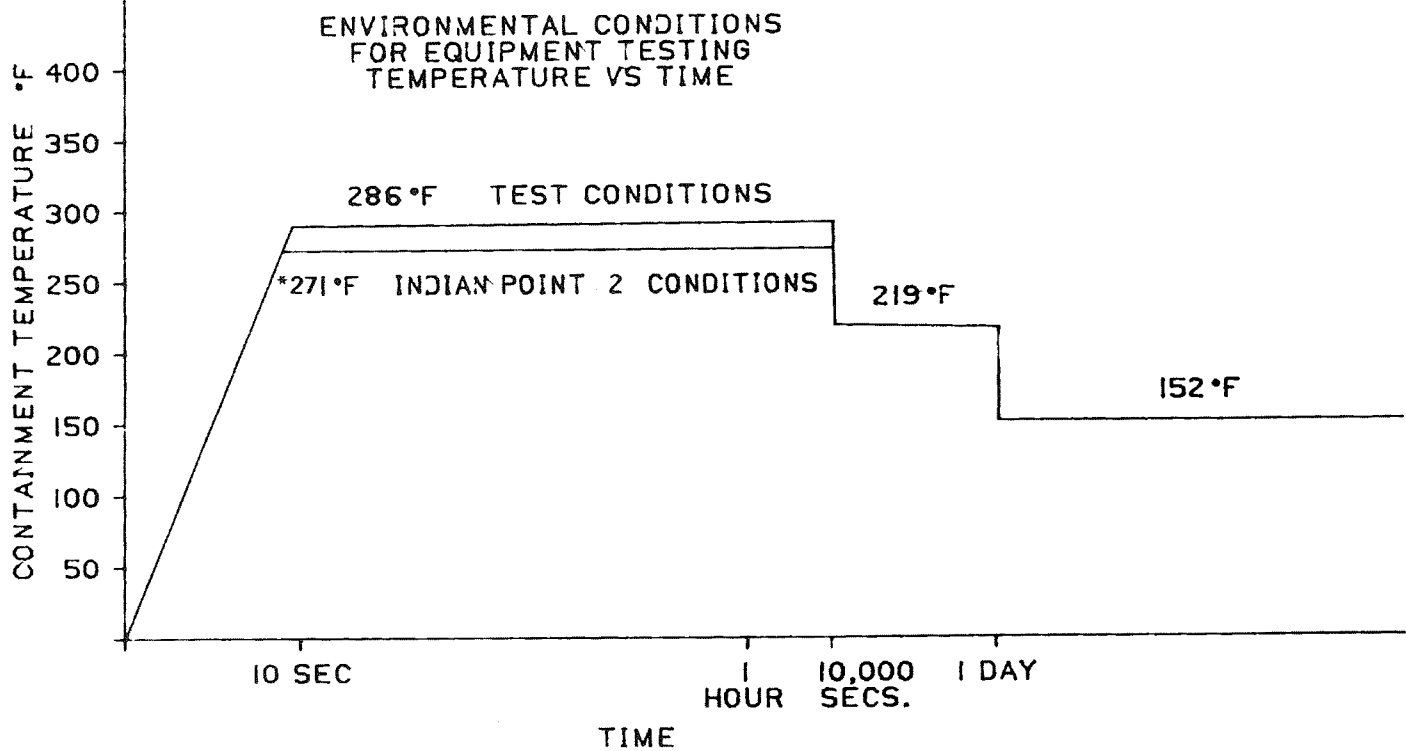
UFSAR FIGURE 7.1-1

ENVIRONMENTAL CONDITIONS FOR
EQUIPMENT TESTING - PRESSURE vs TIME

MIC. No. 1999MC3869

REV. No. 17A

*287°F BASED ON THE MAY 21, 1981 NRC STAFF SER
AND CONSOLIDATED EDISON RESPONSE OF
SEPTEMBER 4, 1981 (REFERENCE 11) TO THAT SER
(BASED ON 40.6 PSIG AND SATURATED CONDITIONS)



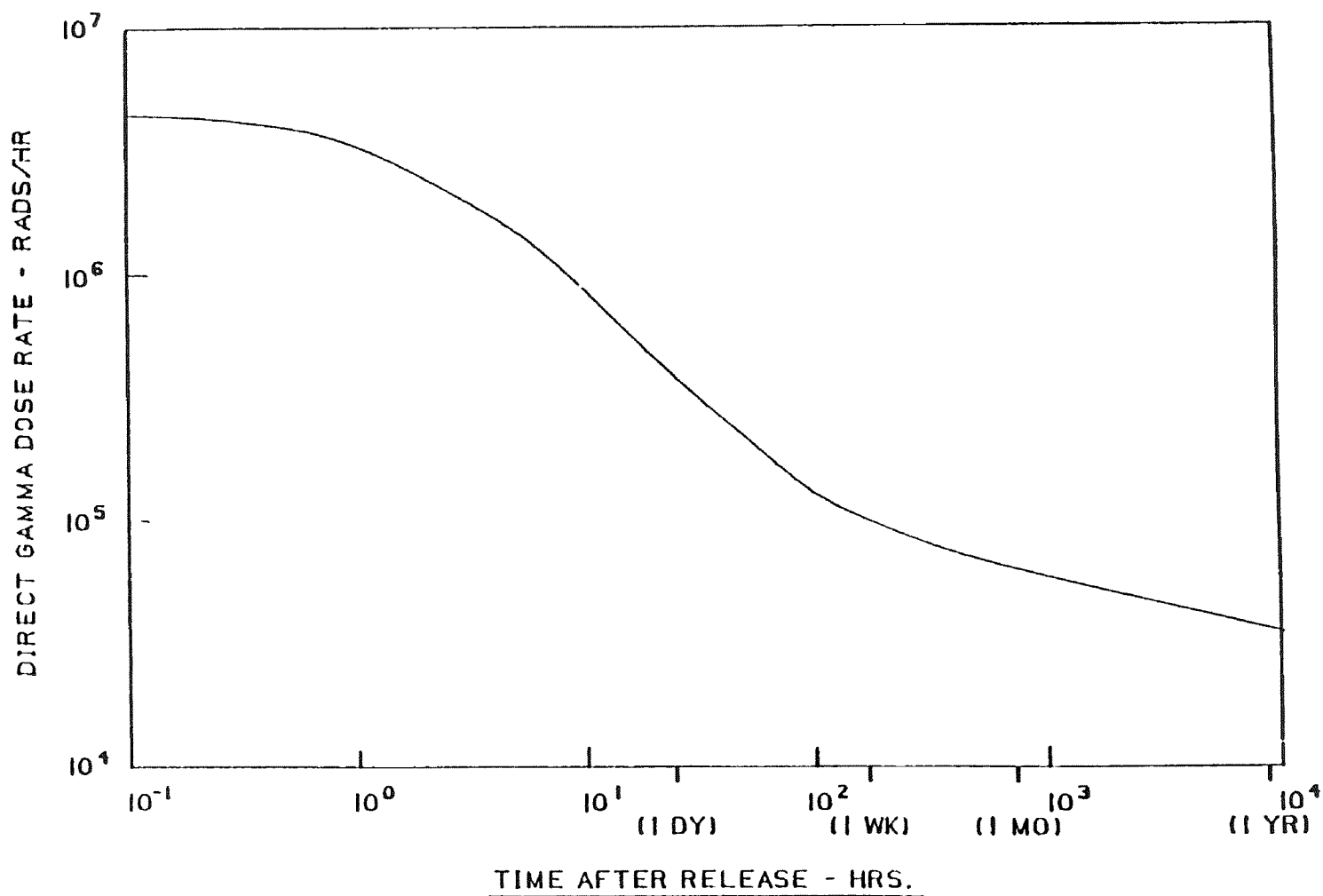
INDIAN POINT UNIT No. 2

UFSAR FIGURE 7.1-2

ENVIRONMENTAL CONDITIONS FOR
EQUIPMENT-TEMPERATURE vs TIME

MIC. No. 1999MC3870

REV. No. 17A

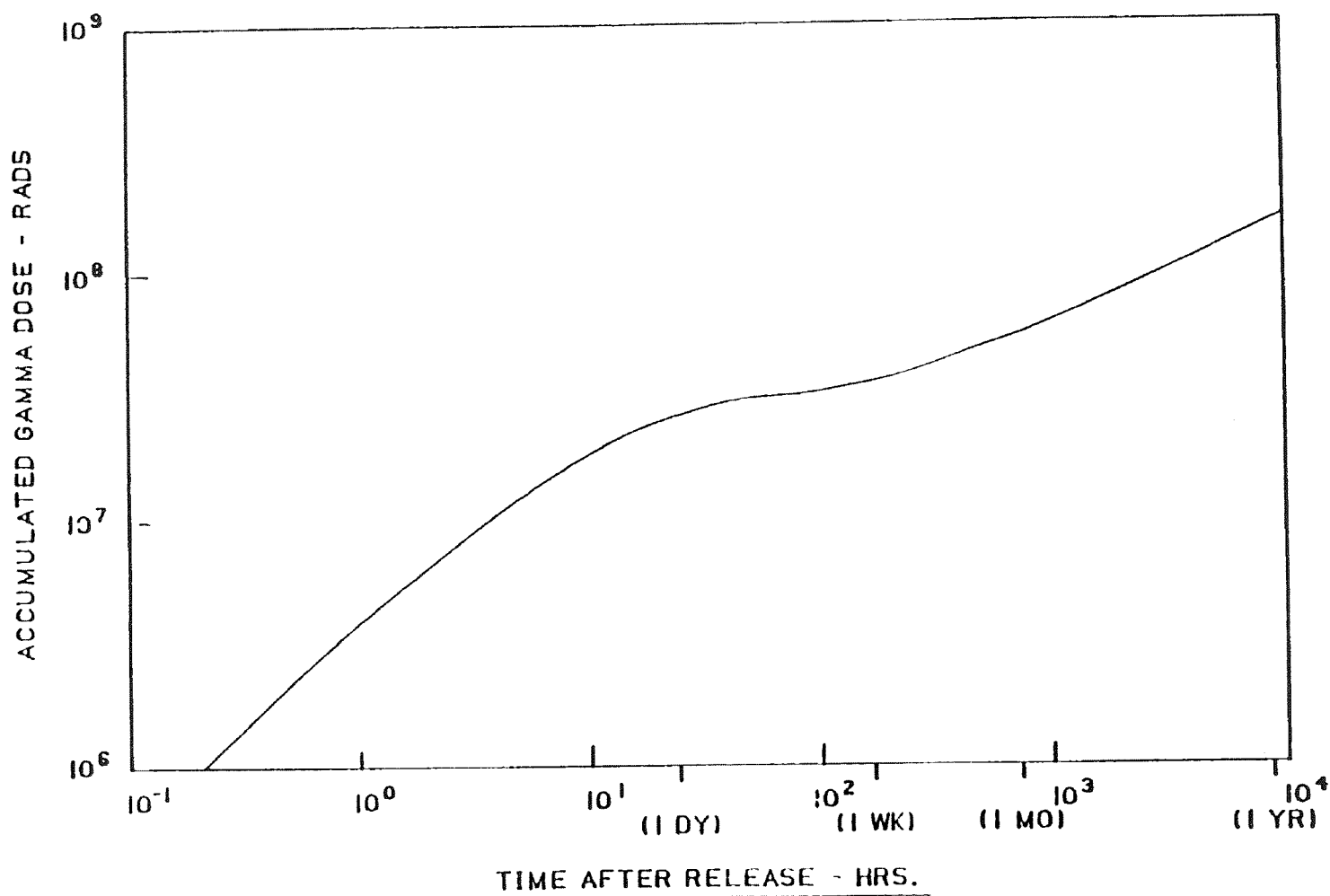


INDIAN POINT UNIT No. 2

UFSAR FIGURE 7.1-3
INSTANTANEOUS GAMMA DOSE RATE
INSIDE THE CONTAINMENT AS A
FUNCTION OF TIME AFTER
RELEASE - TID-14844 MODEL

MIC. No. 1999MC3871

REV. No. 17A

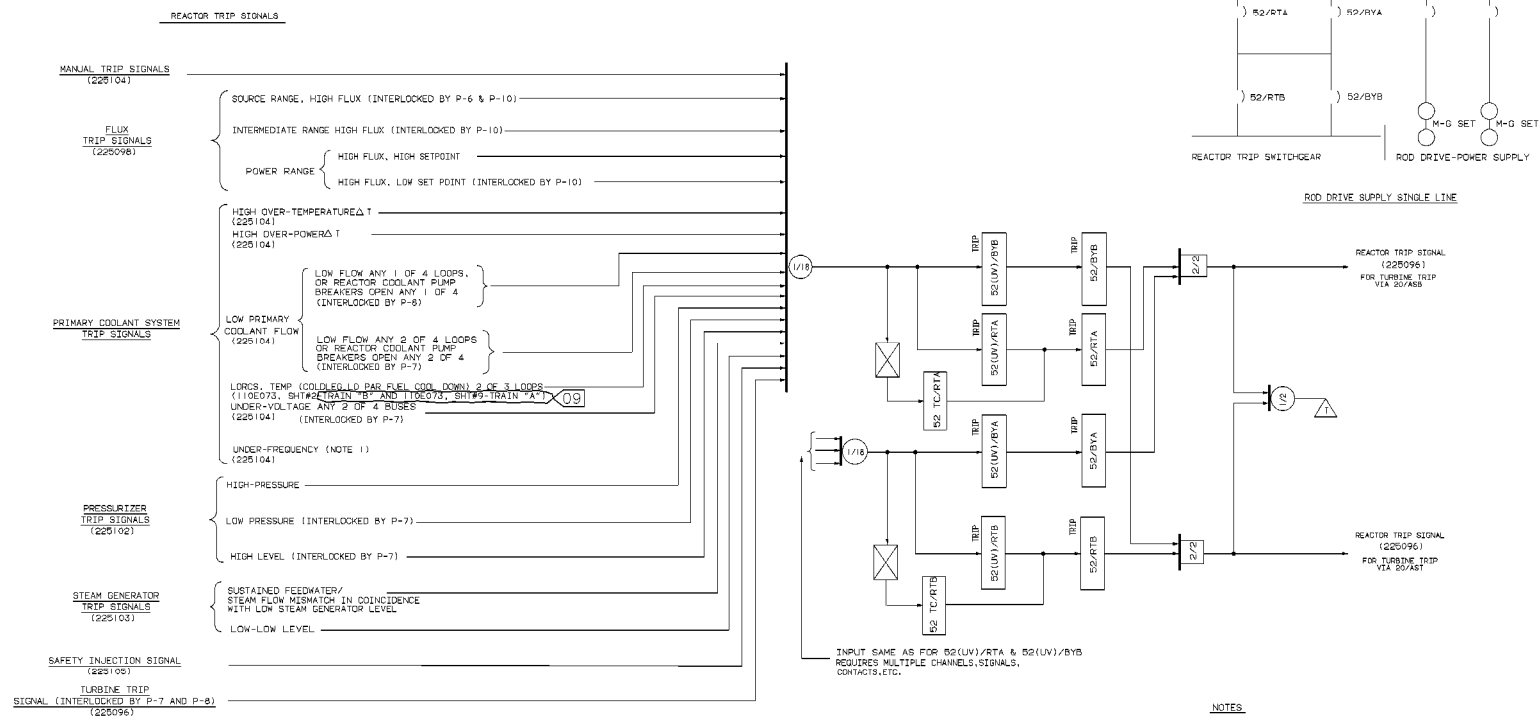


INDIAN POINT UNIT No. 2

UFSAR FIGURE 7.1-4
INTEGRATED GAMMA DOSE RATE
INSIDE THE CONTAINMENT AS A
FUNCTION OF TIME AFTER
RELEASE - TID-14844 MODEL

MIC. No. 1999MC3872

REV. No. 17A

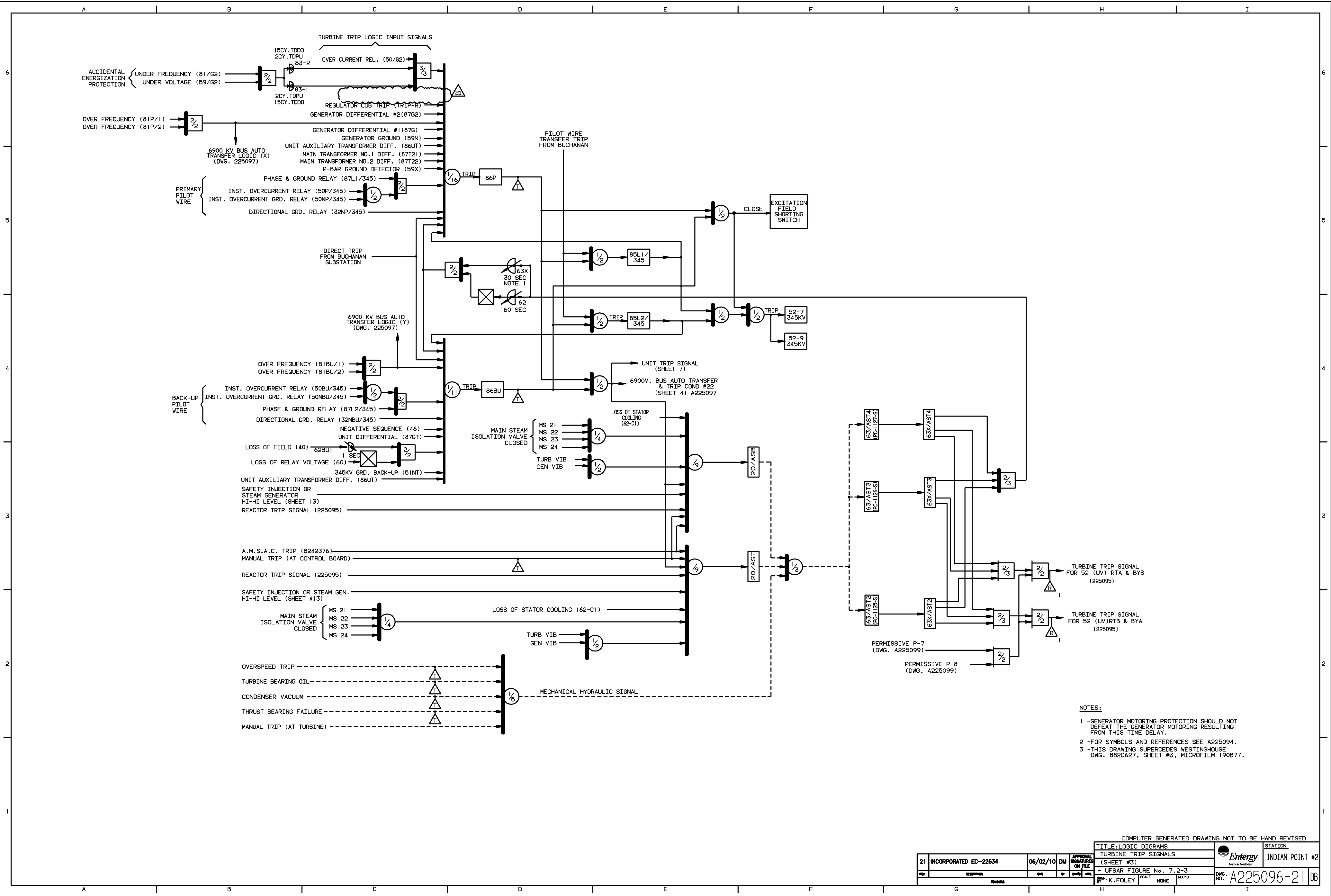


NOTES

- 1- UNDER-FREQUENCY ON ANY 2 OF 4 BUSES WILL OPEN THE BREAKERS OF ALL REACTOR COOLANT PUMPS AND CONSEQUENTLY CAUSE REACTOR TRIP.
- 2- FOR SYMBOLS AND REFERENCES SEE A225094.
- 3- THIS DRAWING SUPERSEDES WESTINGHOUSE DRAWING #W600607 SHEET 2, MICROFILM 190876.
- 4- FOR SCHEMATIC DWGS OF REACTOR PROT RACKS (R2 THRU R6 & P2 THRU P6) SEE WH'9E DWG 110E073, SH1S 1 THRU 11

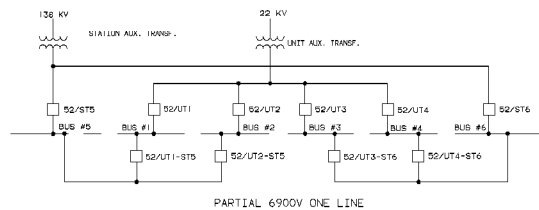
THIS DRAWING CONTAINS ITEMS WHICH ARE SHOWN WITHIN THE BOUNDARY OF "CLASS A" ITEMS PER CI-240-1

COMPUTER GENERATED DRAWING NOT TO BE HAND REVISED									
DATE		BY		CHECKED		APPROVED		STATION	
3/30/01		JOHN J. LOWNEY		BERNARD L. BLEWLE		TITLE: LOGIC DIAGRAMS REACTOR TRIP SIGNALS (SHEET 2)		INDIAN POINT #2	
THIS REVISION IS NON-CLASS AS PER THE GAO/UPDATED DWG. PER CRS 200103361		RELEASED FOR RECORD P/N 69501-AF		VJJ/TD		UFSAR FIGURE No. 7.2-2		DWG. NO. A225095-09	
DATE		REVIEW		APPROVALS		SCALE		DR	
						NONE			




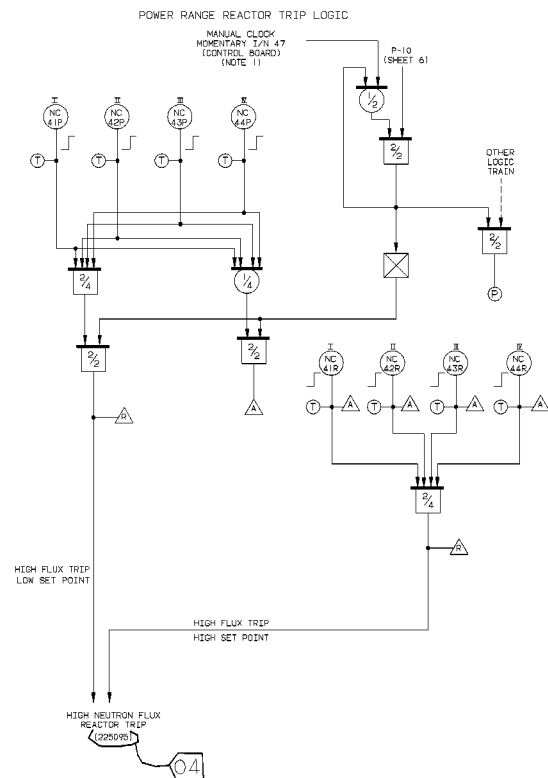
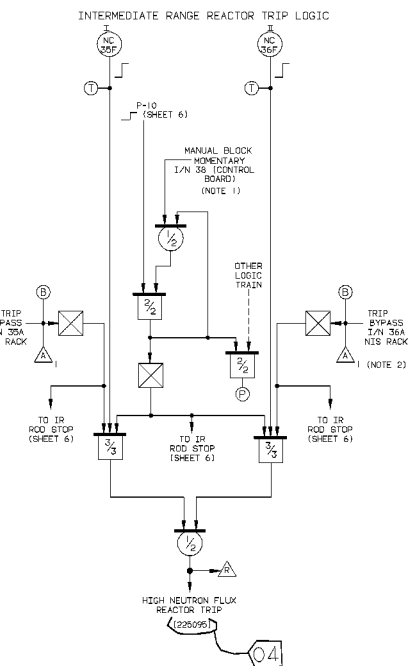
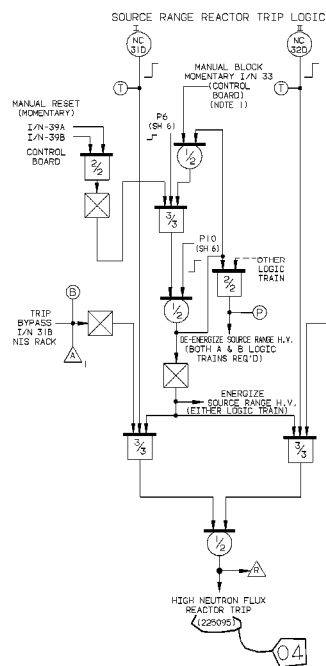
NOTES:
1 -GENERATOR MOTORING PROTECTION SHOULD NOT DEFEAT THE GENERATOR MOTORING RESULTING FROM THIS TIME DELAY.
2 -FOR SYMBOLS AND REFERENCES SEE A225094.
3 -THIS DRAWING SUPERCEDES WESTINGHOUSE DWG. 882D627, SHEET #3, MICROFILM I90B77.

COMPUTER GENERATED DRAWING NOT TO BE HAND REVISED															
21 INCORPORATED EC-22634					06/02/10		DM	APPROVAL SIGNATURES ON FILE		TITLE: LOGIC DIAGRAMS		STATION			
										TURBINE TRIP SIGNALS		INDIAN POINT #2			
REV					DESCRIPTION		DATE	BY	CHK'D BY	APP'D BY	- UFSAR FIGURE No. 7.2-3		DWG. NO. A225096-21		DB
					REVISION						SCALE NONE		REV'D		
G					H					I					



THIS DRAWING CONTAINS ITEMS WHICH
MAY BE CONTROLLED WITHOUT OUR EDITION
"CLASS A" ITEM
PER CI-240-1

COMPUTER GENERATED DRAWING NOT TO BE HAND REVISSED																		
REVISIONS	R	THIS REVISION IS NON-CLASS PER Q-240-1 UPDATED ENG. DES. CODE #1898-00003 ISSUED FOR RECORD P/A 1998Z-C										JOHN J LOWMEY	GERARD L BLEMLE	TITLE/LONG DIAGRAM 6900V BUS AUTO TRANSFER (SHEET #4)	STATION	INDIAN POINT #2		
	DWG																	
	DATE																	
	NO./REV																	
	MD/YR	05/15/00	DATE	ENG.	SUPPL.	DESIGN	CHECKED	APPROVED	DATE									
	DCM		APPROVALS															
										USFAR FIGURE NO. 7-2-4		SCALE		NONE	REF'S	DWG. NO.	A225097-05	DB

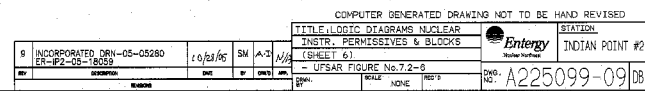


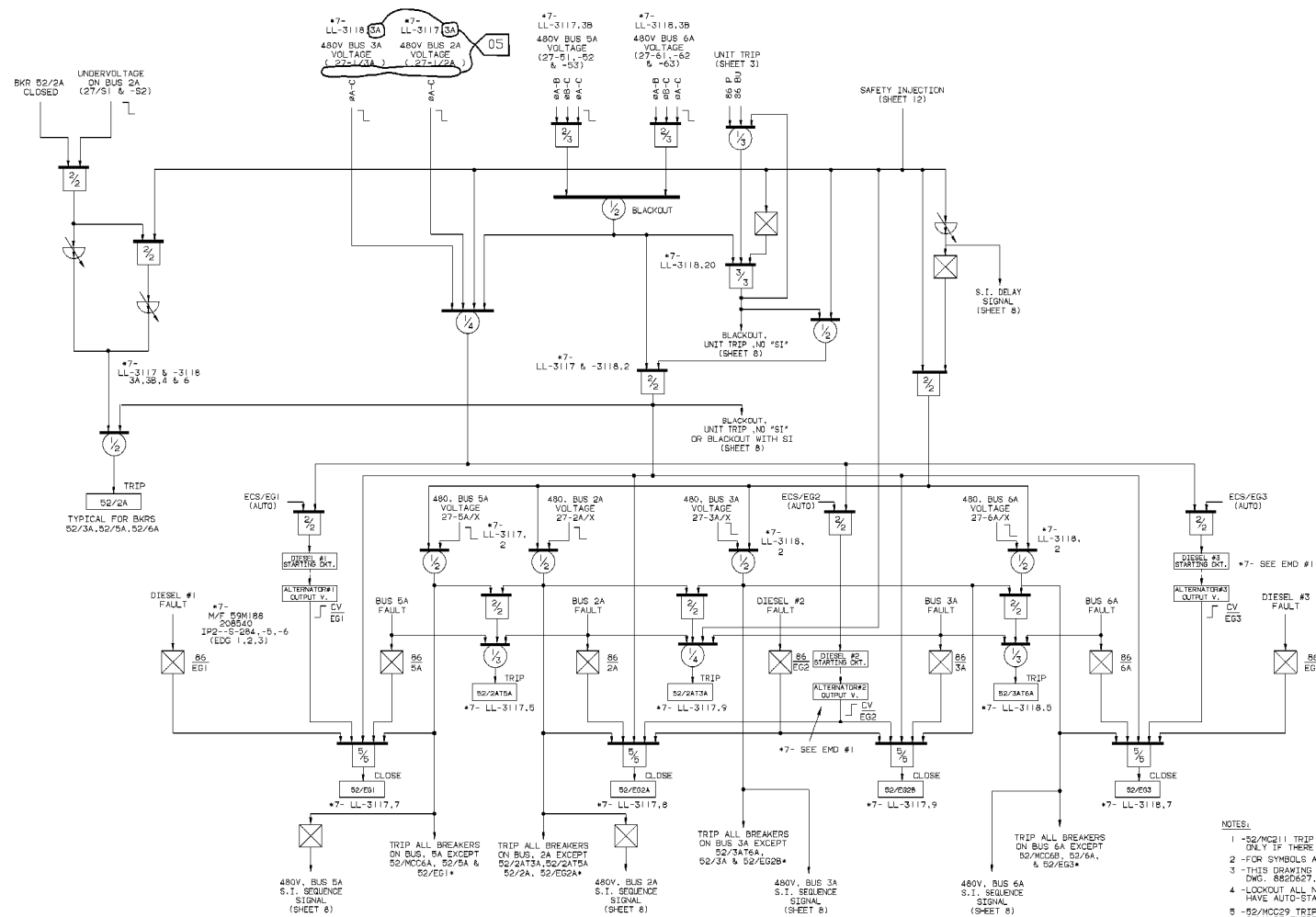
NOTES:

- 1- I/N 33A — LOGIC TRAIN A
- 1/N 33B — LOGIC TRAIN B
- 1/N 38A — LOGIC TRAIN A
- 1/N 38B — LOGIC TRAIN B
- 1/N 47A — LOGIC TRAIN A
- 1/N 47B — LOGIC TRAIN B
- 2- SAME WINDOW AS ALARM 1 ON SHEET 6
- 3- FOR SYMBOLS AND REFERENCES SEE A225094.
- 4- THIS DRAWING SUPERCEDES WESTINGHOUSE Dwg. 8825527, SHEET #5, MICROFILM 238B75.

THIS OFFICE CERTIFIES THAT THIS
 DRAWING IS CONTROLLED BY THE COMPANY
 "CLASS A" ITEMS
 PER CI-240-1

R E V I S I O N	COMPUTER GENERATED DRAWING NOT TO BE HAND REVISED												
	PMD M/J/R		THIS REV IS NON-CLASS AS PER CI-240-1			JOHN J LOWNEY		GERALD L BLEWLE		TITLE: LOGIC DIAGRAM NUCLEAR INSTRUMENTATION TRIP SIGNALS (SHEET #5) - UFSAR FIGURE NO. 7.2-5		GE Edison STATION INDIAN POINT #2	
	UPDATED DWG PER ORSI 9900224 & ORSI 99903752 PKG D-2412 RELEASED FOR RECORD P/N 6391-1P		DATE		REV.		APP.		CHK.		DWG. NO.		
			DATE		REV.		APP.		CHK.		DWG. NO.		
			DATE		REV.		APP.		CHK.		DWG. NO.		
DWG	DATE		REV.		APP.		CHK.		DWG. NO.		DB		

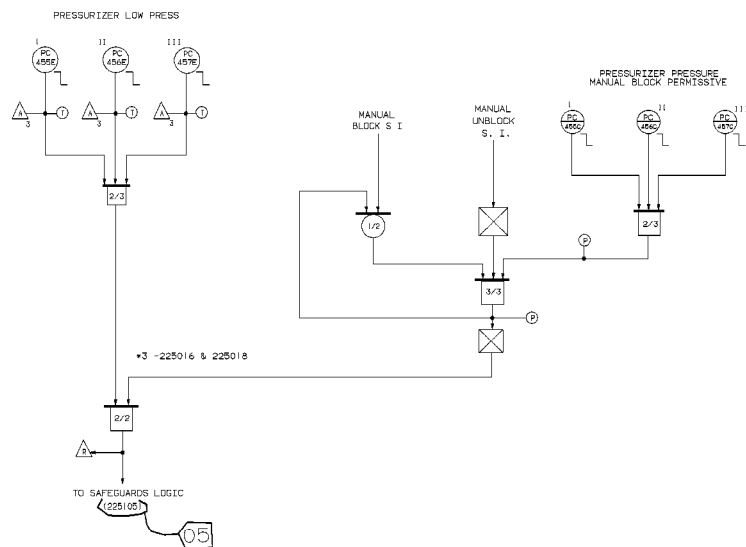
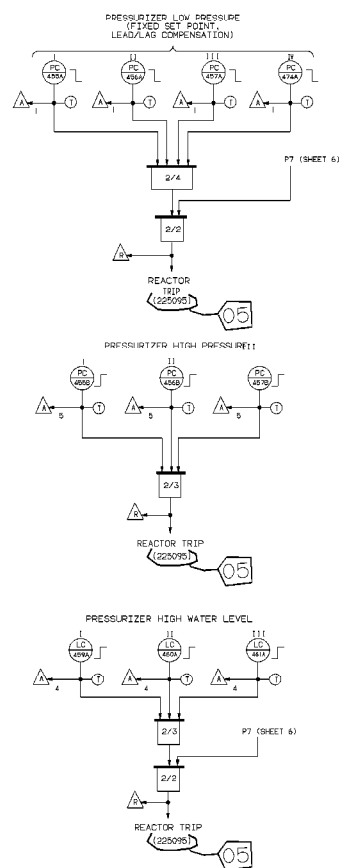




- NOTES:
- 52/MCC11 TRIP ON BUS 3A UNDERVOLTAGE
ONLY IF THERE IS A LOSS OF OUTSIDE POWER.
-FOR SYMBOLS AND REFERENCES SEE A226094.
-THIS DRAWING SUPERSEDES WESTINGHOUSE
DWG. 6820627, SHEET #7, MICROFILM 200892.
 - LOOKUP ALL NON-REARFARLARS BREAKERS WHICH
HAVE AUTO-START CIRCUIT.
 - 52/MCC29 TRIP ON BUS 3A UNDERVOLTAGE
ONLY IF THERE IS A LOSS OF OUTSIDE POWER.
 - 52/MCC24 TRIP BUS 2A UNDERVOLTAGE
ONLY IF THERE IS A LOSS OF OUTSIDE POWER.
 - NUMBERS PREFIXED WITH THIS REFERS TO THE APPLICABLE
SYMBOLIC DIAGRAM
A) EG. 1P2-S-200 MEANS 1P2-1-S-002000
B) EG. LL-3117,25 MEANS 1P32-LL-3117,SHEET 2

THIS DRAWING CONTAINS ITEMS WHICH
MUST BE CONTROLLED STRICTLY FOR EXPORT AS
"CLASS A" ITEMS
PER CI-240-1

[illegible]

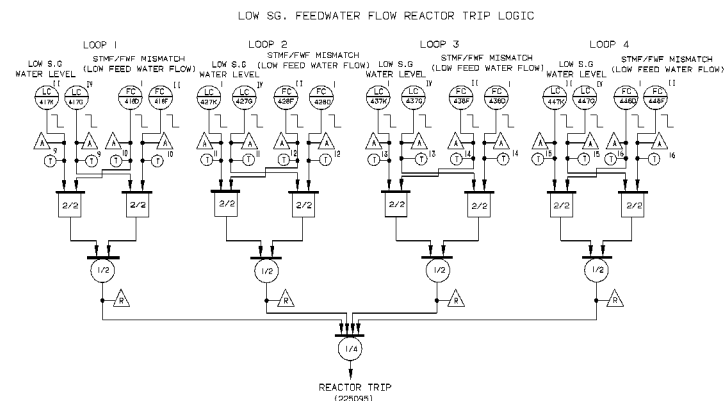


NOTES:

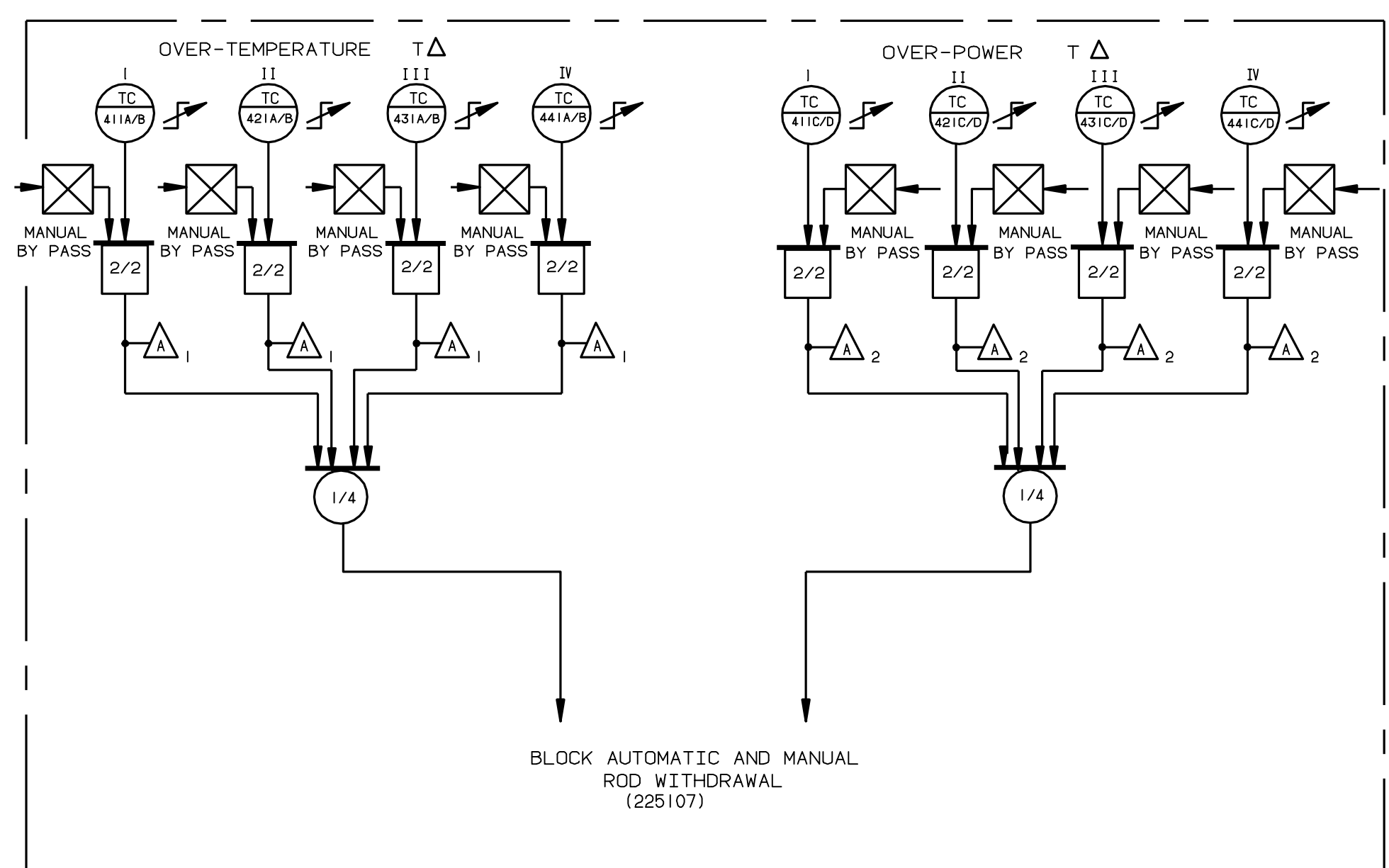
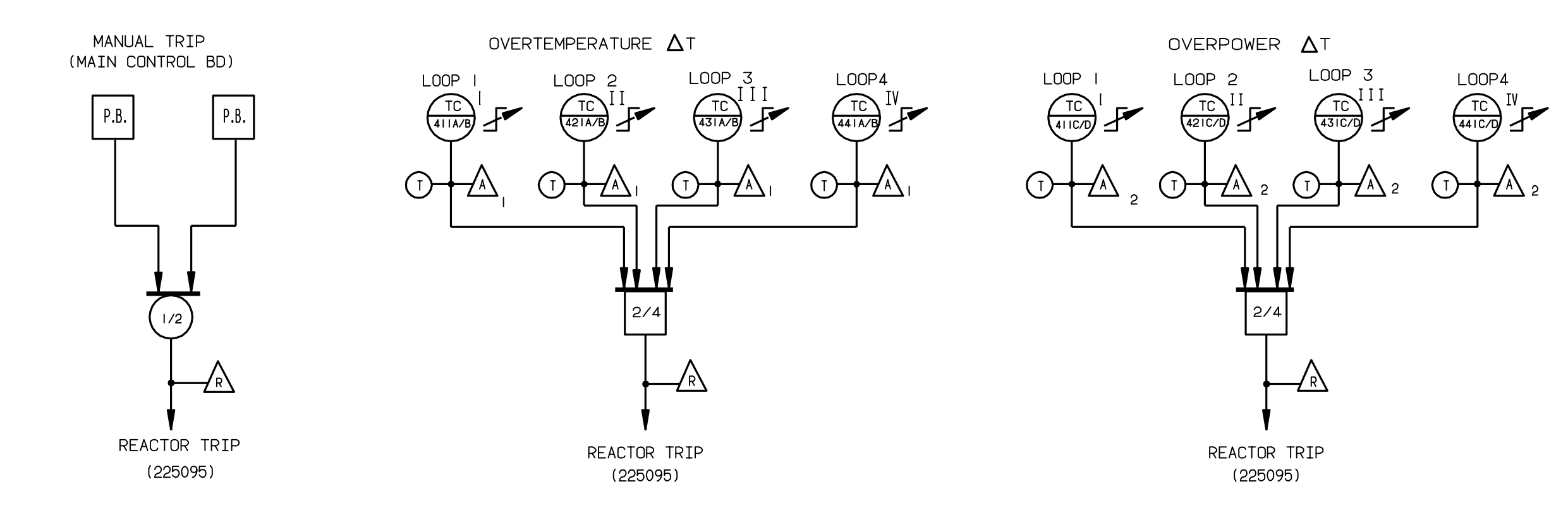
- 1 - FOR SYMBOLS AND REFERENCES SEE A225094.
- 2 - THIS DRAWING SUPERCEDES WESTINGHOUSE DWG. 6820627, SHEET #9, NUCORJLM 276894.
- *3 - NUMBERS PREFIXED WITH THIS REFERS TO THE APPLICABLE SCHEMATIC DIAGRAM

THIS OFFICE CERTIFIES THAT WHEN
PLANT IS OPERATED WITHIN DESIGN
CLASS A ITEMS
PER CI-240-1

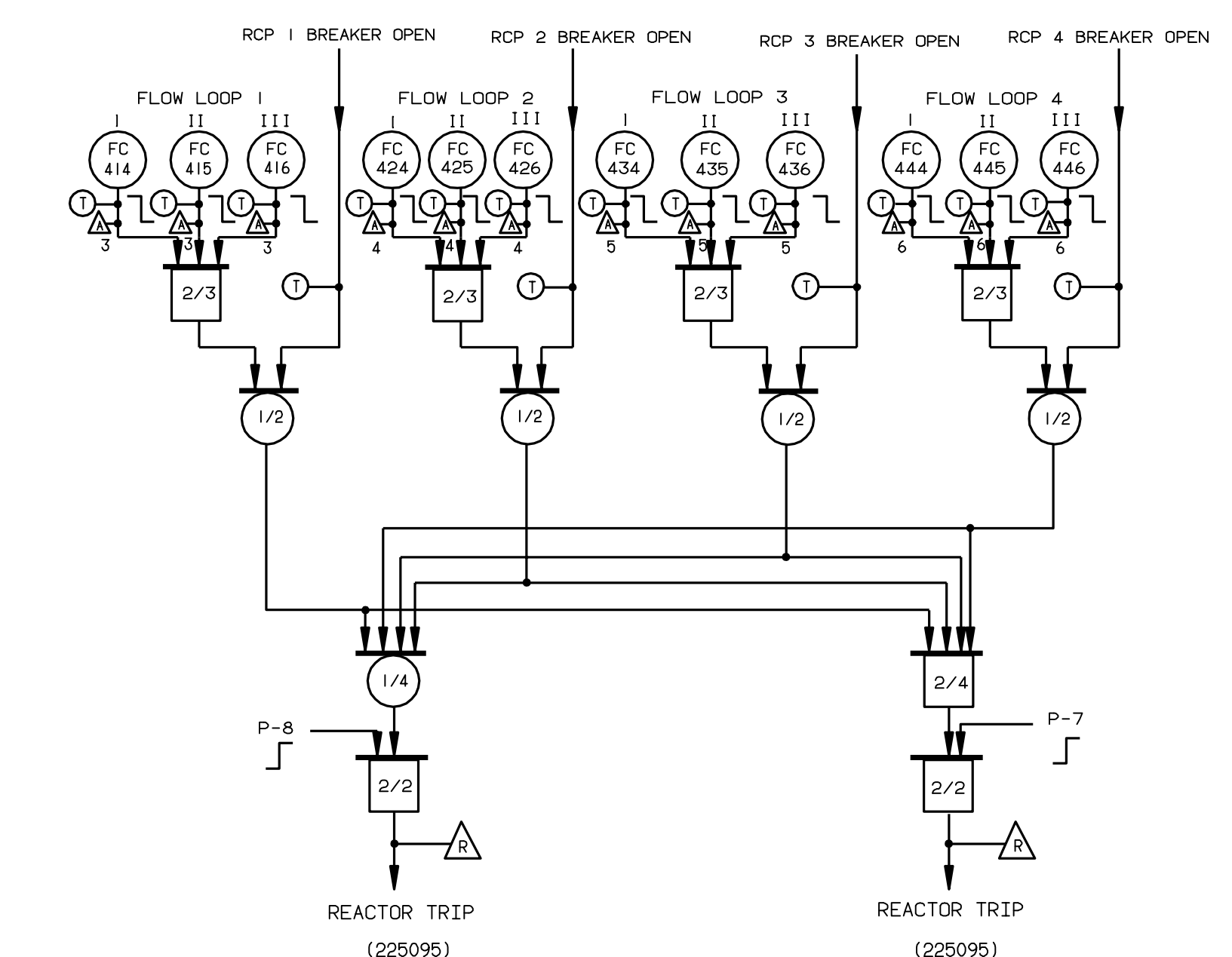
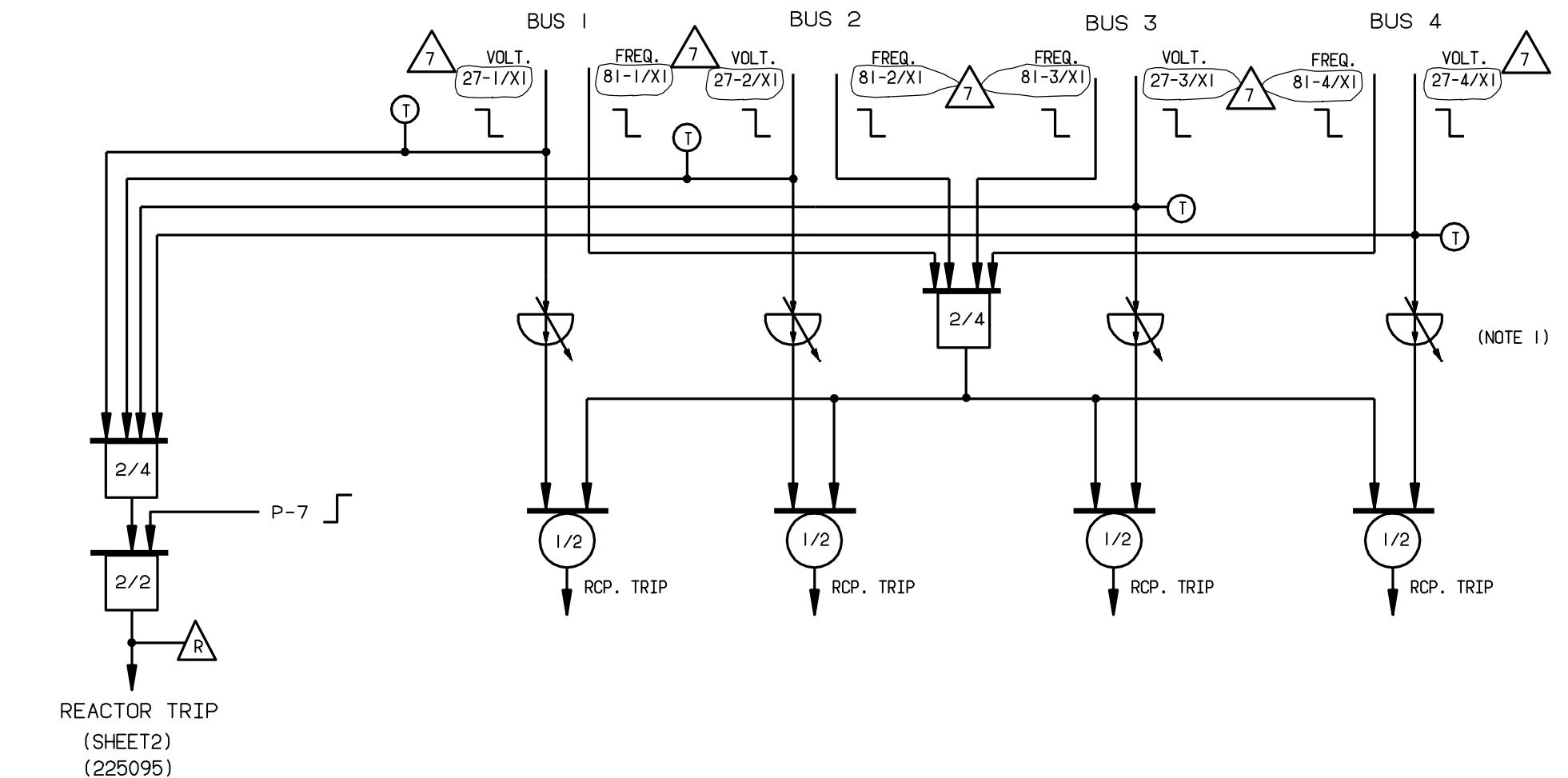
COMPUTER GENERATED DRAWING NOT TO BE HAND REVISED																			
REVISED	NO.	DATE	BY	CHKD.	APP'D.	THIS REV. IS NON-CLASS AS PER CI-240-1 UPDATED DWG PER ORS1990224 & ORS19903752 PKG D-2412 RELEASED FOR RECORD P/N 6351-UP				JOHN J. LOWNEY				GERALD L. BLEMBLE	TITLE: LOGIC DIAGRAMS PRESSURIZER TRIP SIGNALS (SHEET #9) - UFSAR FIGURE No. 7.2-9				STATION INDIAN POINT #2
						DATE				DATE					DATE				
						REVIEW				REVIEW					REVIEW				
						DATE				DATE					DATE				
						DATE				DATE					DATE				
DWG. NO. A225102-05																			



- THIS DRAWING CONTAINS ITEMS WHICH
MAY BE CONTROLLED WITHIN COM EOBH BY AN
"CLASS A" ITEMS
PER CI-240-1



NOT REDUNDANT

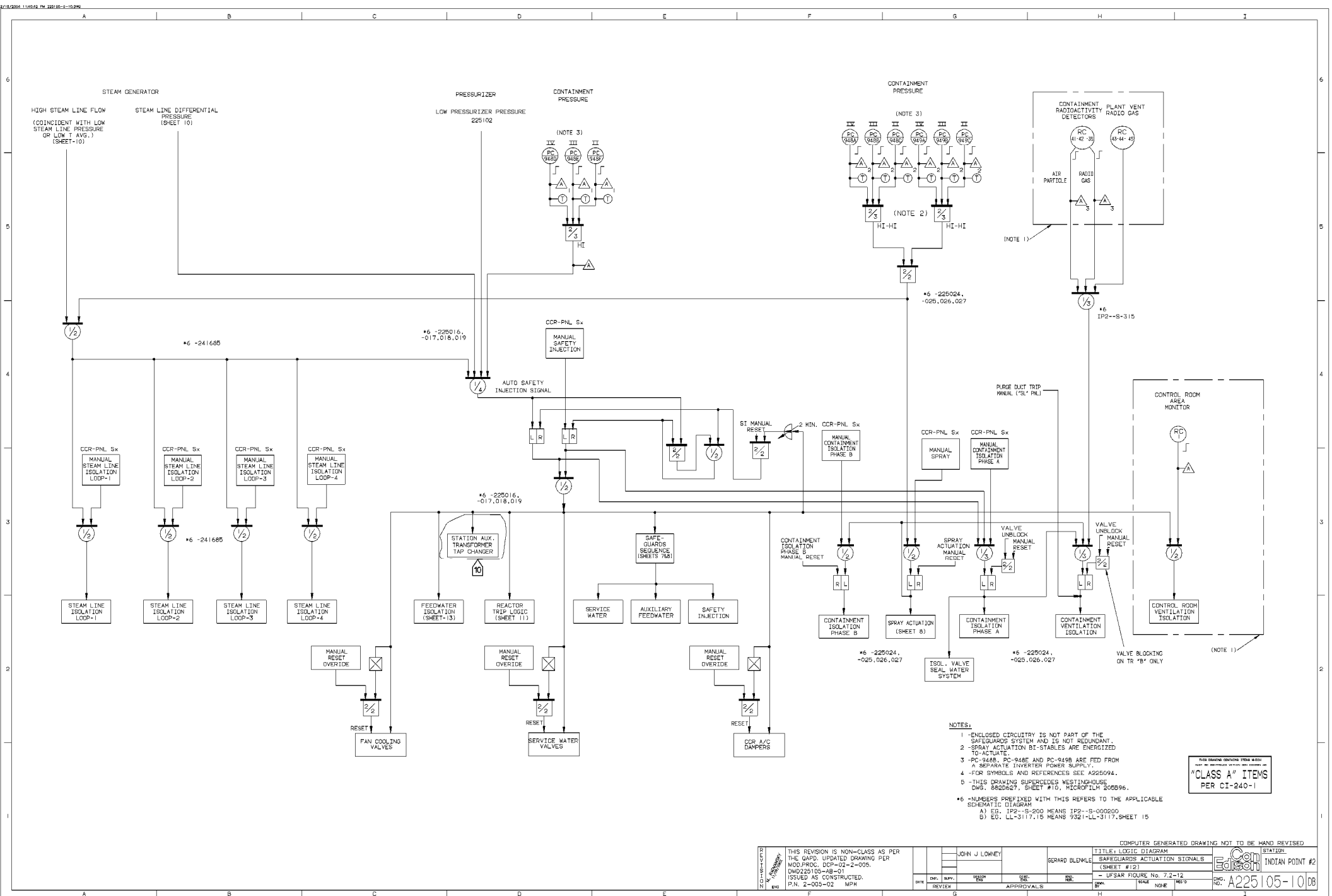


- NOTES:
- 1 -CIRCUITRY FOR RCP TRIP ON UNDERVOLTAGE PERTAINS TO BUS-CLEARING, IS NOT PART OF REACTOR PROTECTION SYSTEM, AND ITS NOT REDUNDANT.
 - 2 -FOR SYMBOLS AND REFERENCES SEE A225094.
 - 3 -THIS DRAWING SUPERCEDES WESTINGHOUSE DWG. 882D627, SHEET #10, MICROFILM 207B97.
 - 4 -FOR REACTOR PROTECTION SCHEMATIC SEE WHSE 110E073
 - 5 -THE AUTOMATIC CONTROL ROD WITHDRAWAL FEATURE IN PLANT OPERATION HAS BEEN PHYSICALLY DISABLED, ALLOWING ONLY THE AUTOMATIC CONTROL ROD INSERTION MODE TO BE IN EFFECT WHEN ROD CONTROL IS IN AUTOMATIC.

THIS DRAWING CONTAINS ITEMS WHICH
MUST BE CONTROLLED WITHIN CON EDISON AS
"CLASS A" ITEMS
PER CI-240-1

INDIAN POINT ENERGY CENTER – UNIT 2		
LOGIC DIAGRAM PRIMARY COOLANT SYSTEM TRIP SIGNALS & MANUAL TRIP (SHEET #11)		
	DWG NO. A225104	REV 7
SCALE	SHEET	

7	INCORPORATED EC 8954	07/24/08	SM	APPROVAL SIGNATURES ON FILE
REV	DESCRIPTION	DATE	BY	CHKD



- 1 -ENCLOSED CIRCUITRY IS NOT PART OF THE SAFEGUARDS SYSTEM AND IS NOT REDUNDANT.
- 2 -SPRAY ACTIVATION BT-STABLES ARE ENERGIZED TO ACTIVATE.
- 3 -PC-948B, PC-948E AND PC-949B ARE FED FROM A SEPARATE INVERTER POWER SUPPLY.
- 4 -FOR SYMBOLS AND REFERENCES SEE 9226094.
- 5 -THIS DRAWING SUPERCEDES WESTINGHOUSE DWS. 8826267, SHEET #10, MICROFILM 200596.
- 6 -NUMBERS PREFIXED WITH THIS REFERS TO THE APPLICABLE SCHEMATIC DIAGRAM.
 - A) EG. IP2-8-200 MEANS IP2-9-002000
 - B) EG. LL-3117.15 MEANS 9321-LL-3117.SHEET 15

THIS DRAWING CONTAINS ITEMS 4-1004
 EXCEPT THE UNCLASSIFIED SIXTEEN (16) EXEMPTIONS AND
 "CLASS A" ITEMS
 PER CI-240-1

REVISION	THIS REVISION IS NON-CLASS AS PER THE QAPD. UPDATED DRAWING PER MOD.PROC. DCP-02-2-005. DMD225105-AB-01 ISSUED AS CONSTRUCTED. P.N. 2-005-02 MPH
----------	---

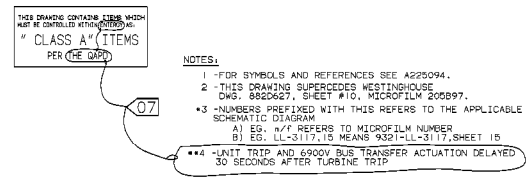
			JOHN J LOWNE
DATE	CHK.	SUPV.	DESIGN ENG.
	REVIEW		

GERARD BLEN

COMPUTER GENERATED DRAWING NOT TO BE HAND REVISED

COMPUTER GENERATED DRAWING			
LENKLE	TITLE: LOGIC DIAGRAM		
	SAFEGUARDS ACTUATION SIGNALS		
	(SHEET #12)		
	- UFSAR FIGURE No. 7.2-12		
DATE: 00	SCALE	NONE	REC'D

		STATION INDIAN POINT #2
DWG. NO.	A225105-10	DE

[illegible]



		COMPUTER GENERATED DRAWING NOT TO BE HAND REVISED					
THIS REV IS NON-CLASS AS PER THE GARD UPATED DWG PER CR# 200108050 RELEASED FOR RECORD P/L# 69807 12-19-2001		CH		DATE		GERARD BLEMLE TITLE: LOGIC DIAGRAM ROD STOPS & TURBINE LOADS OUTBACK. SHEET #141 - USFAR FIGURE NO. 7.2-14 DWG. NO. A225107-09	
PW		DRN	SUPV.	DESIGN	CHECK	APPROVALS	STATION INDIAN POINT #2
ING.							DB

REVISIONS

643	0
-----	---

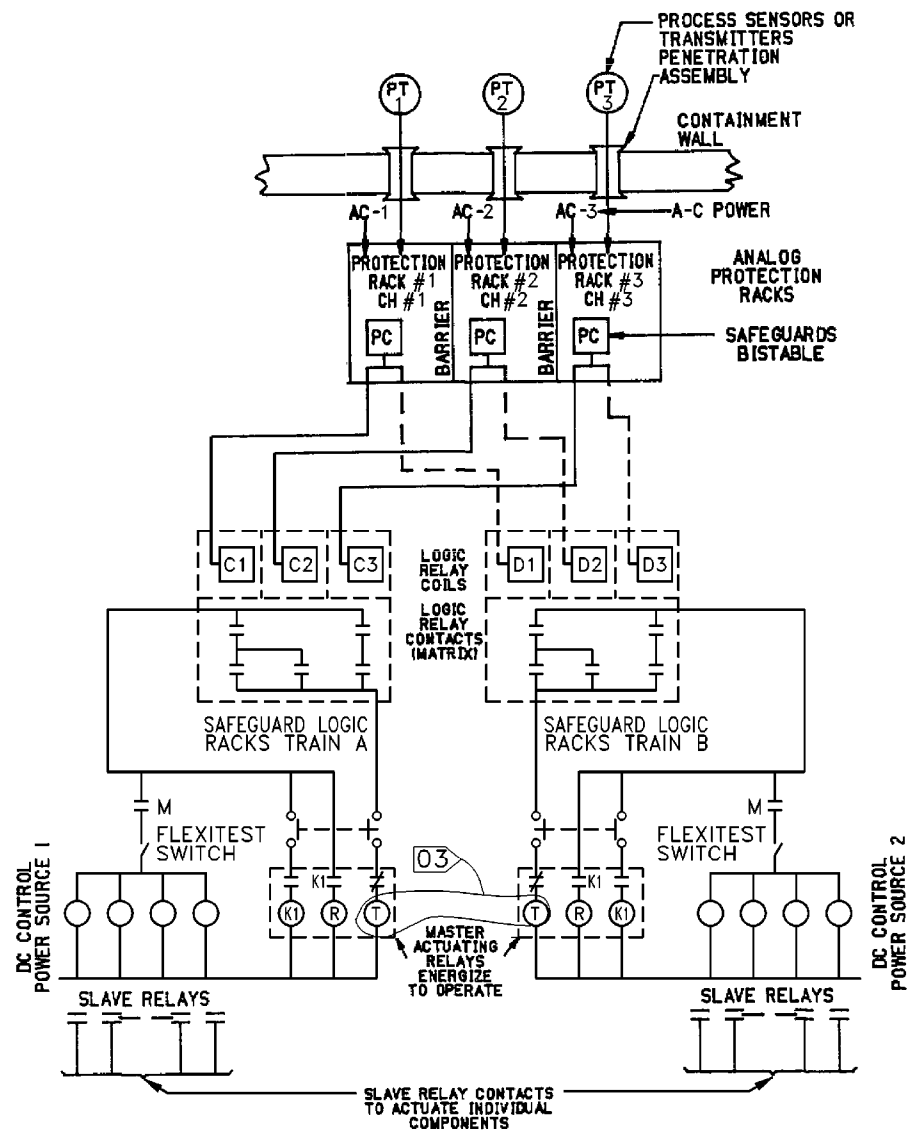
THIS REV.
IS NON-
CLASS
AS PER
CI-240-1
RELEASED
FOR INFO
ONLY
PN 32357
4-24-85

V. JAYARAMAN 07-12-99	01
--------------------------	----

THIS REVISION
IS NON-CLASS
PER CI-240-1
UPDATED DWG.
PER CRS
#199806049;
FILE O-2014.
RELEASED
FOR RECORD
P.N.69911-NP
G.To.

V. JAYARAMAN 06/26/00	03
--------------------------	----

THIS REVISION
IS NON-CLASS
PER CI-240-1
UPDATED DWG.
PER CRS
#199800127
RELEASED
FOR RECORD
P.N.69982-CD
AG/VJ



SAFEGUARD ACTUATION CIRCUITRY
AND HARDWARE CHANNELIZATION

MI

STATION- INDIAN POINT 2
UFSAR FIGURE NO. 7.2-15

DRAWN BY REPRO CHECKED
SCALE NONE J. O. 32357-00

APPROVALS

CHIEF
DESIGN
ENG.

ENG. 6/28/85

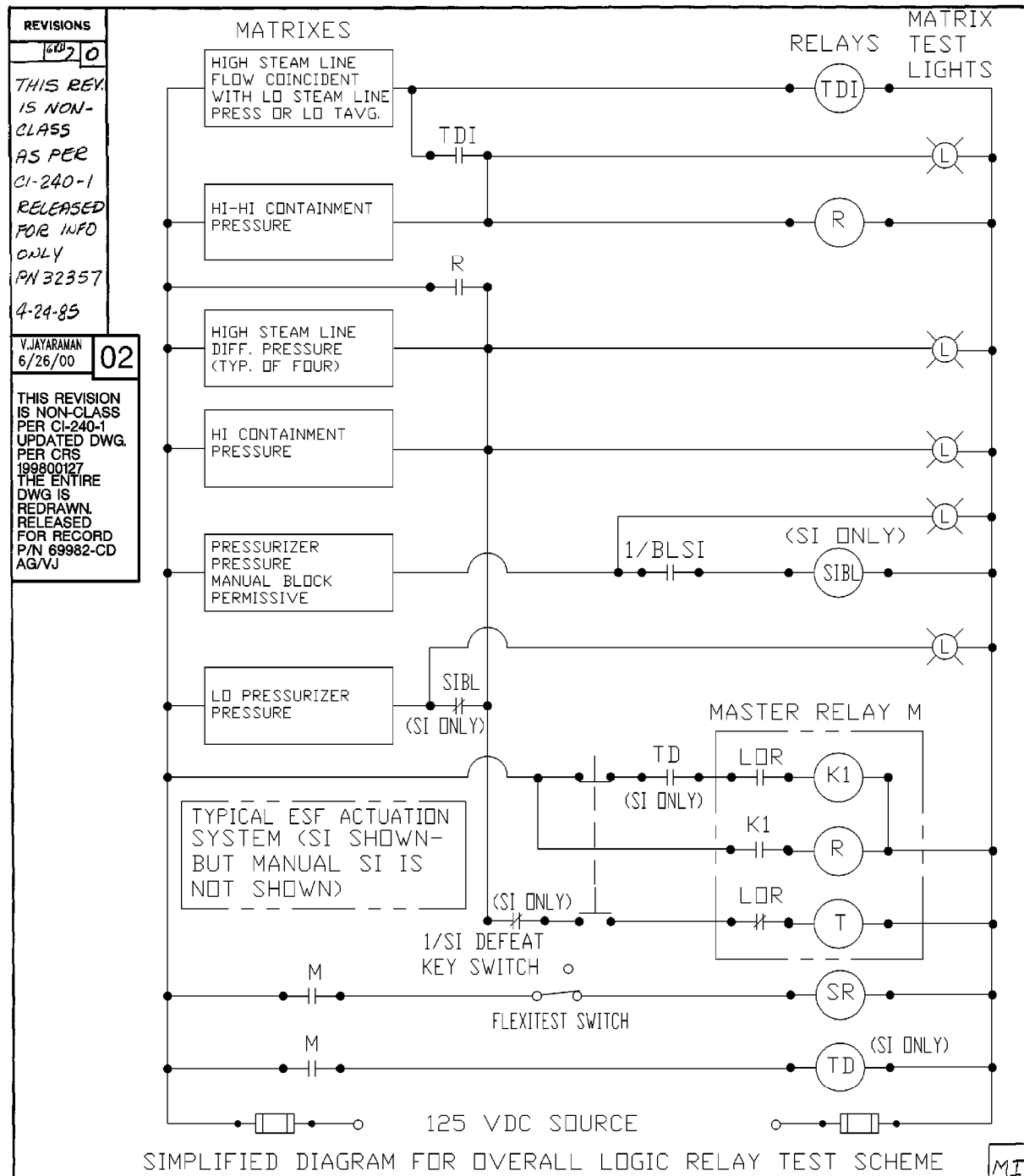
DE 8/1/85

ENG. 8/1/85

CONSOLIDATED EDISON CO. OF N.Y., INC.

DWG. NO. E 243318-03

RECORDED



STATION- INDIAN POINT 2
UFSAR FIGURE NO. 7.2-16

DRAWN BY <i>REPRO</i>	CHECKED
SCALE <i>NONE</i>	J. O. <i>32357-00</i>

APPROVALS

CHIEF
DESIGN
ENG.

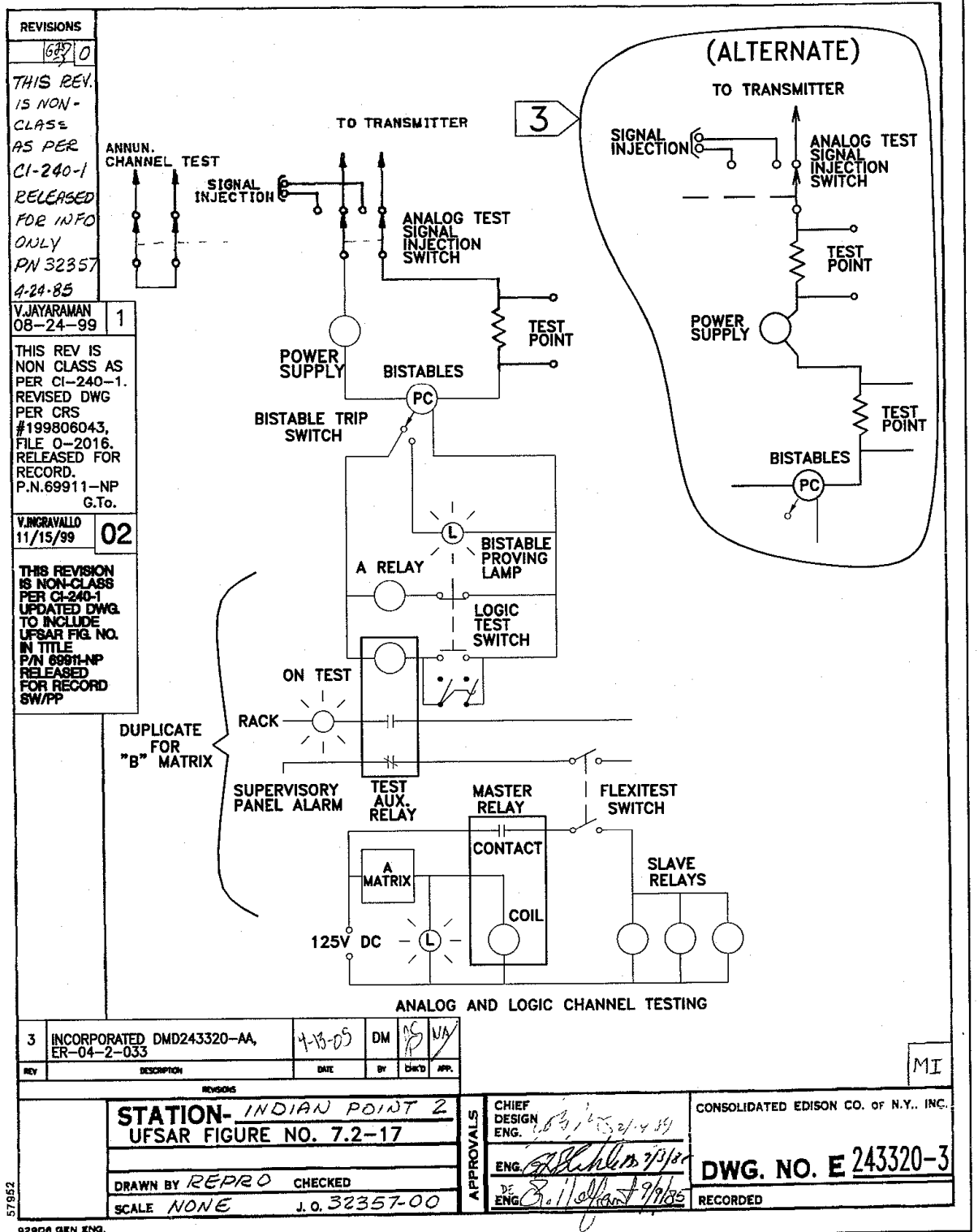
ENG. G. H. Hahley 7/1

ENG 11/11/20

CONSOLIDATED EDISON CO. OF N.Y., INC.

DWG. NO. E 243319-02

RECORDED



57952

REVISIONS

1 0

THIS REV.
IS NON-
CLASS
AS PER
CI-240-1
RELEASED
FOR INFO
ONLY
PN 32357
4-24-85

VJ
3/28/00

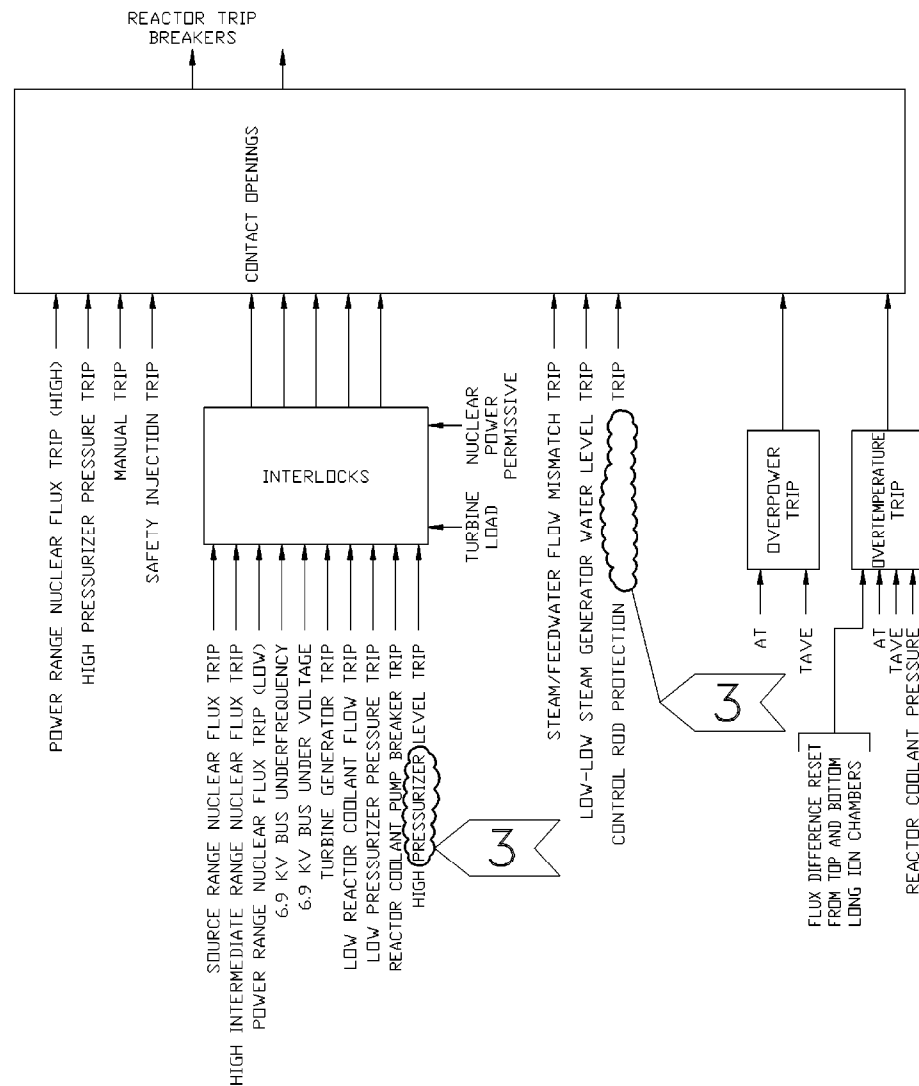
2

THIS REVISION
IS NON-CLASS
PER CI-240-1
UPDATED DWG.
PER CRS #
199904040,
FILE 0-2814.
RELEASED
FOR RECORD
P/N 69982-CM
SG

VJ
2/12/01

3

THIS REVISION
IS NON-CLASS
PER CI-240-1
UPDATED DWG.
TO CORRECT
TYPO & REMOVE
SP. VALUE
FOR RECORD
P/N 69901-AF
JH



BLOCK DIAGRAM -
REACTOR PROTECTION SYSTEMS

STATION- INDIAN POINT 2
UFSAR FIGURE NO. 7.2-18

DRAWN BY *REPRO* CHECKED
SCALE *NONE* J. O. 32357-00

APPROVALS

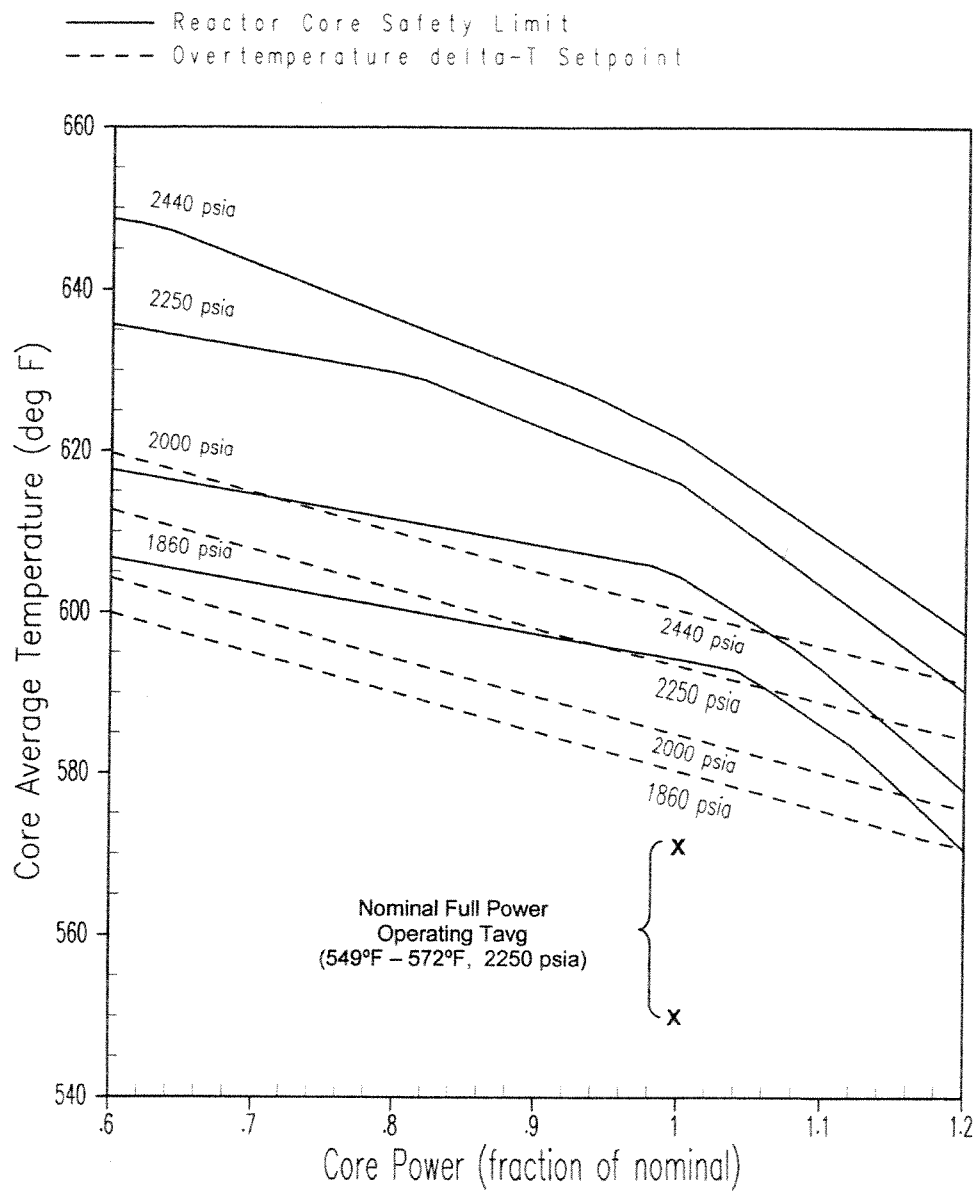
CHIEF DESIGN ENG. *[Signature]*
ENG. *[Signature]* 7/1/85
DE *[Signature]*
ENG. *[Signature]* 9/9/85

CONSOLIDATED EDISON CO. OF N.Y., INC.

DWG. NO. E 243321-3
RECORDED

57952

92906 GEN ENG.



INDIAN POINT UNIT No. 2

CORE AVERAGE TEMPERATURE vs
 FRACTION OF NOMINAL POWER

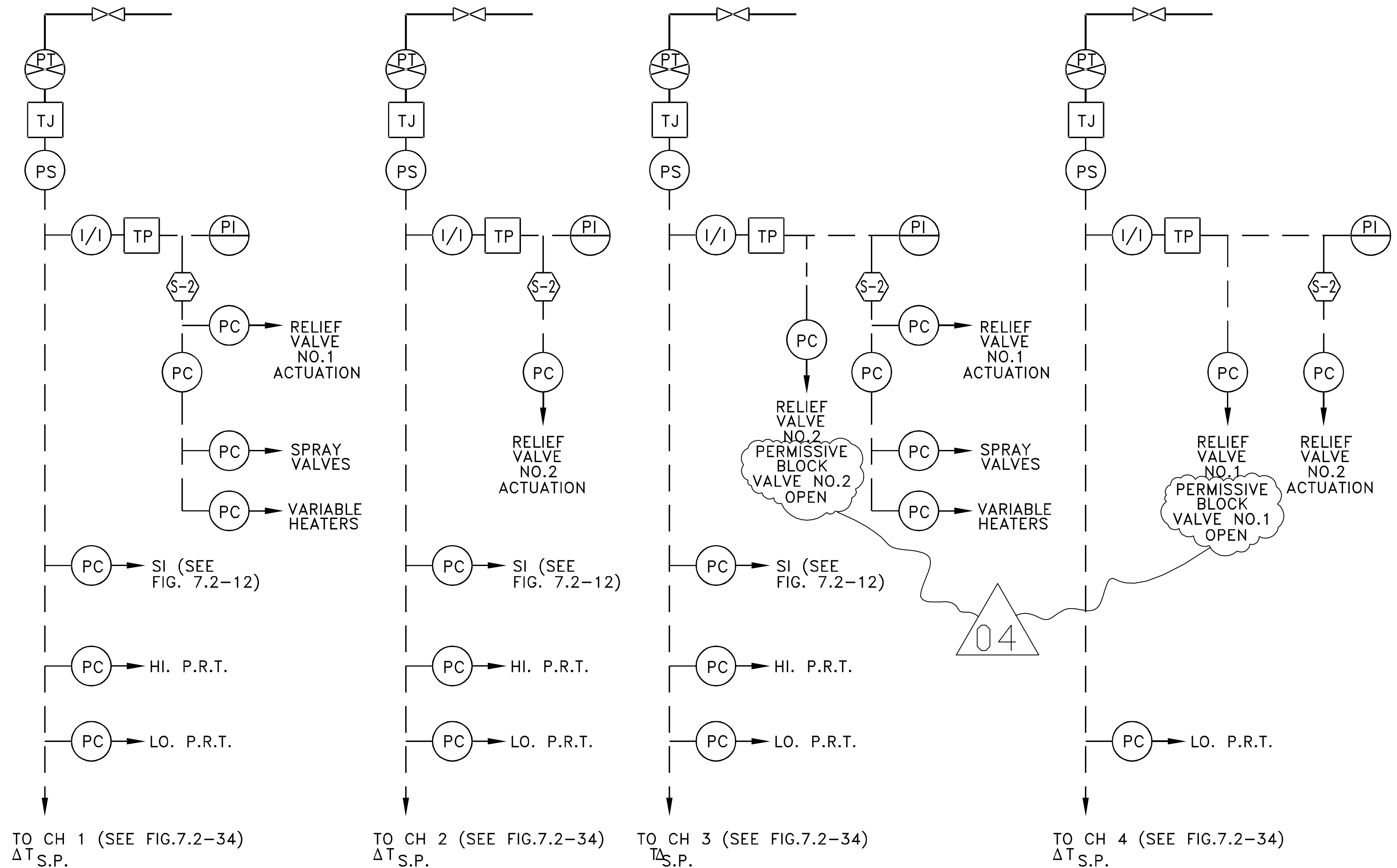
UFSAR FIGURE 7.2-19

REV. No. 19

04	INCORPORATED EC-7829	05/18/08	JS	APPROVAL SIGNATURES ON FILE	
REV	DESCRIPTION	DATE	BY	CHK'D	APP.
REVISIONS					

LEGEND

S-2 CHANNEL 1,2,3,4
SELECTOR SWITCH



PRESSURIZER PRESSURE CONTROL AND PROTECTION SYSTEM

STATION- INDIA POINT 2

UFSAR FIGURE NO. 7.2-21

DRAWN BY REROO CHECKED

SCALE NONE J.O. 32357-00

APPROVALS

CHIEF DESIGN ENG.

ENG. 3.11/11/85

ENG. 3.11/11/85

CONSOLIDATED EDISON CO. OF N.Y., INC.

DWG. NO. E 243314-04

RECORDED

MI

REVISIONS

0

THIS REV.
IS NON-
CLASS
AS PER
CI-240-1
RELEASED
FOR INFO
ONLY
PN 32357
4-24-85

V.I.
4/18/99

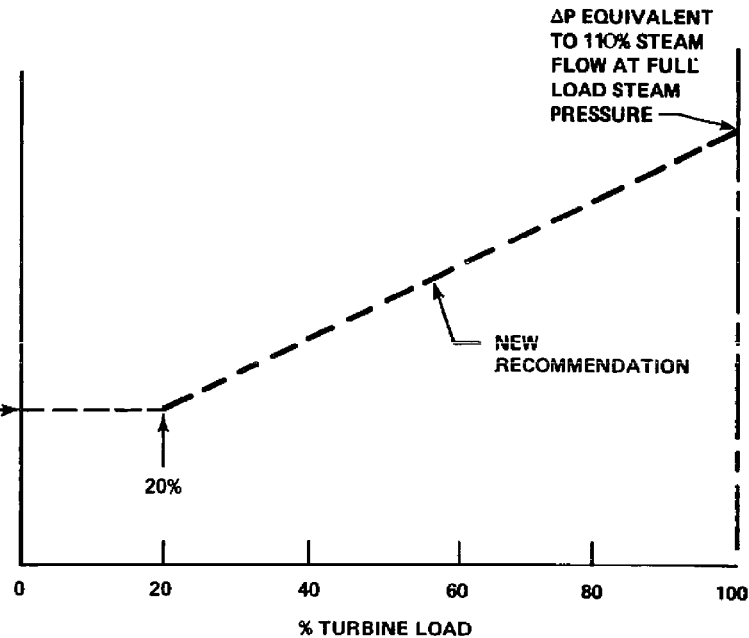
01

THIS REVISION
IS NON-CLASS
PER CI-240-1
UPDATED DWG.
TO INCLUDE
UFSAR FIG. NO.
IN TITLE
P/N 69911-NP
RELEASED
FOR RECORD
DLA
4/18/99

STRATUS
ENGINEERING

ΔP (NOT DRAWN TO
SCALE)

ΔP EQUIVALENT
TO 40% STEAM FLOW
AT ZERO LOAD
STEAM PRESSURE



01

MI

STATION- INDIAN POINT 2
UFSAR FIGURE NO. 7.2-22

DRAWN BY *REPRO* CHECKED
SCALE *NONE* J.O. 32357-00

APPROVALS

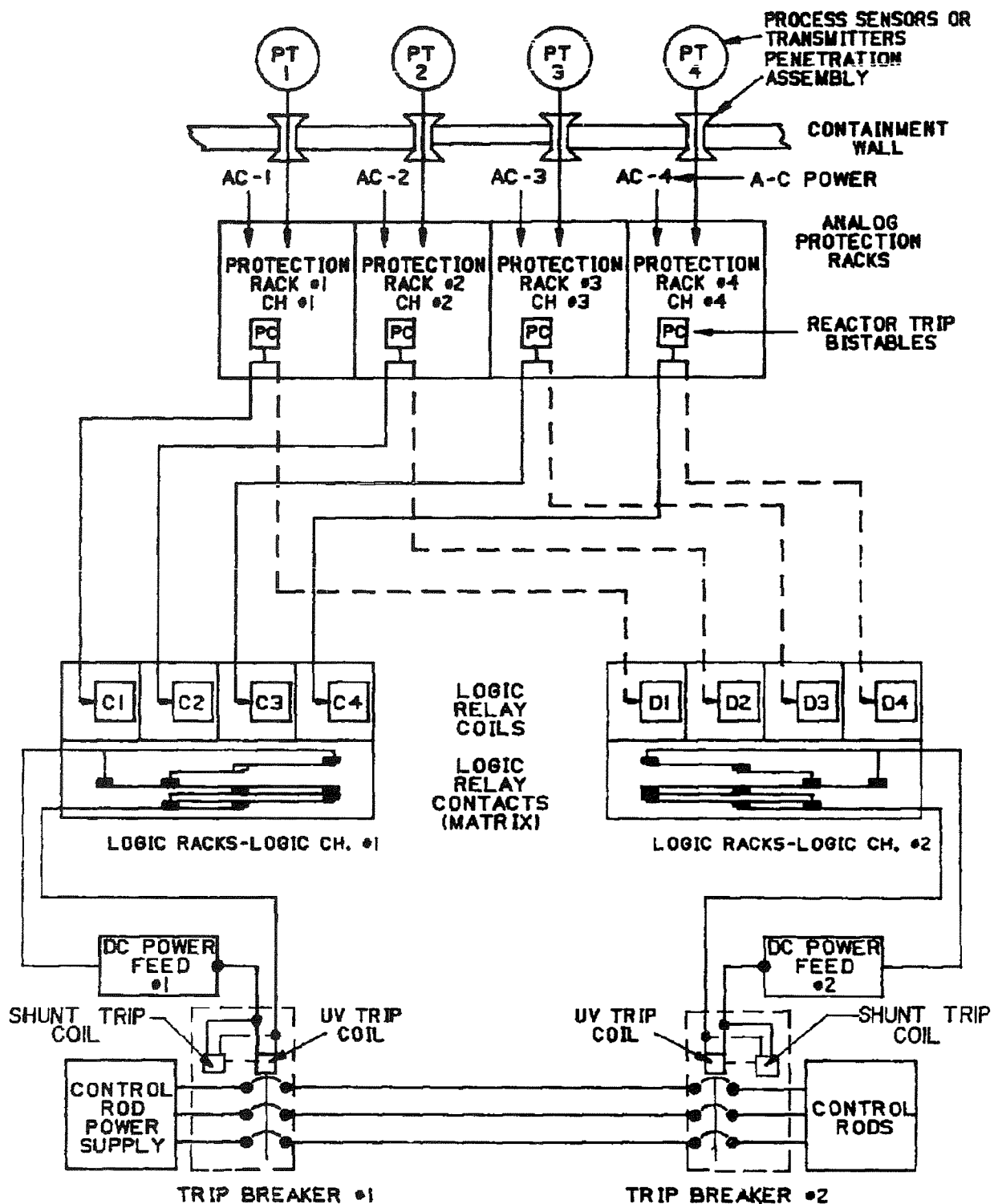
CHIEF
DESIGN
ENG.

ENG.
DE
ENG.

CONSOLIDATED EDISON CO. OF N.Y., INC.

DWG. NO. E 243315-01

RECORDED



INDIAN POINT UNIT No. 2

UFSAR FIGURE 7.2-23

DESIGN PHILOSOPHY TO ACHIEVE
ISOLATION BETWEEN CHANNELS

MIC. No. 1999MC3901

REV. No. 17A

REVISIONS

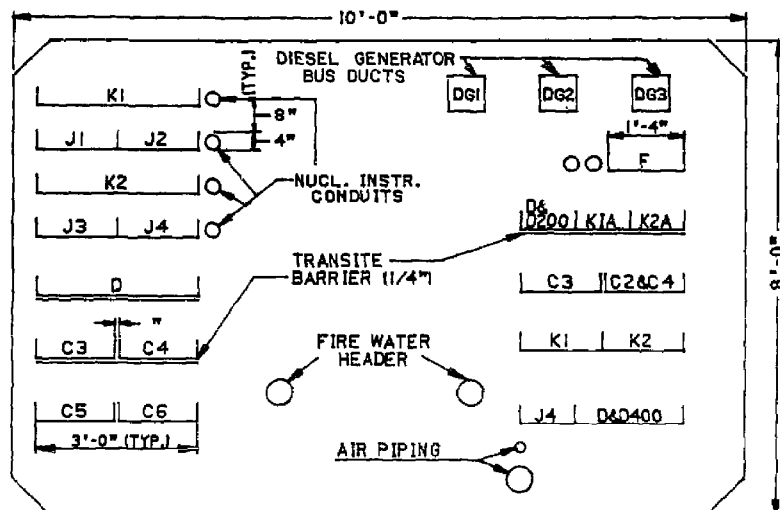
REV	0
-----	---

THIS REV.
IS NON-
CLASS
AS PER
CI-240-1
RELEASED
FOR INFO
ONLY
PN 32357
4-24-85

V.I.	01
4/18/99	

THIS REVISION
IS NON-CLASS
PER CI-240-1
UPDATED DWG.
TO INCLUDE
UFSAR FIG. NO.
IN TITLE
P/N 69911-NP
RELEASED
FOR RECORD
DLA
4/18/99

STRATUS
ENGINEERING



TYPICAL SECTION-CABLE TUNNEL

- K1** CONTROL TRAY ONE CHANNEL (FOR VALVE CONTROL) ETC
J1-J2 2 INSTR TRAYS WITH BARRIERS-2 CHANNELS
K2 CONTROL TRAY ONE CHANNEL (FOR VALVE CONTROL) ETC
J3&J4 2 INSTR TRAYS WITH BARRIERS-2 CHANNELS
D MAX #12 WIRE FOR SMALL POWER & ONE CONTROL CHANNEL
C4 (480 V HEAVY POWER) CONT RECIRC FAN 21 SAF INJ PUMP 21 RECIRC PUMP 21
C3 (480 V HEAVY POWER) CONT RECIRC FAN 25 RES HT REM PUMP 22 SAF INJ PUMP 23 CONT RECIRC FAN 23
C5 (480 V HEAVY POWER) CONT RECIRC FAN 22 SAF INJ PUMP 22
C6 (480 V HEAVY POWER) RECIRC PUMP 22 RES HT REM PUMP 22 CONT RECIRC FAN 24
F (1ST CHANNEL) DC SUPPLY (EMERG) DIESEL GEN CONT PNL 23 LTG & MOTOR FEEDERS
D & D200 - KIA-K2A DIESEL GEN CONTROL 3 CHANNELS
C3 (480V HEAVY POWER) COMP CL8 PUMP 23 MCC27 FEEDER MCC 26B FEEDER LTG SWGR TRANSF 22 CHARGING PUMP 22 CHARGING PUMP 23 CONT SPRAY PUMP 22
C2 (480V HEAVY POWER) DC EMER LTG FEEDER
C4 CONT SPRAY PUMP 21 COMP COOLING PUMP 21 COMP COOLING PUMP 22 MCC 26A FEEDER LTG SWGR TRANSF 23 CHARGING PUMP 21
K1-K2 CONTROL, 2 CHANNELS
J4 INSTR 1 CHANNEL
D&D400 MISC SMALL POWER & CONTROL 1 CHANNEL

01

MI

STATION- INDIAN POINT 2
 UFSAR FIGURE NO. 72-24

DRAWN BY REPRO CHECKED

SCALE NONE J.O. 32357-00

APPROVALS

CHIEF
DESIGN
ENG.

ENG.

DE
ENG.

CONSOLIDATED EDISON CO. OF N.Y., INC.

DWG. NO. E 243317-01

RECORDED

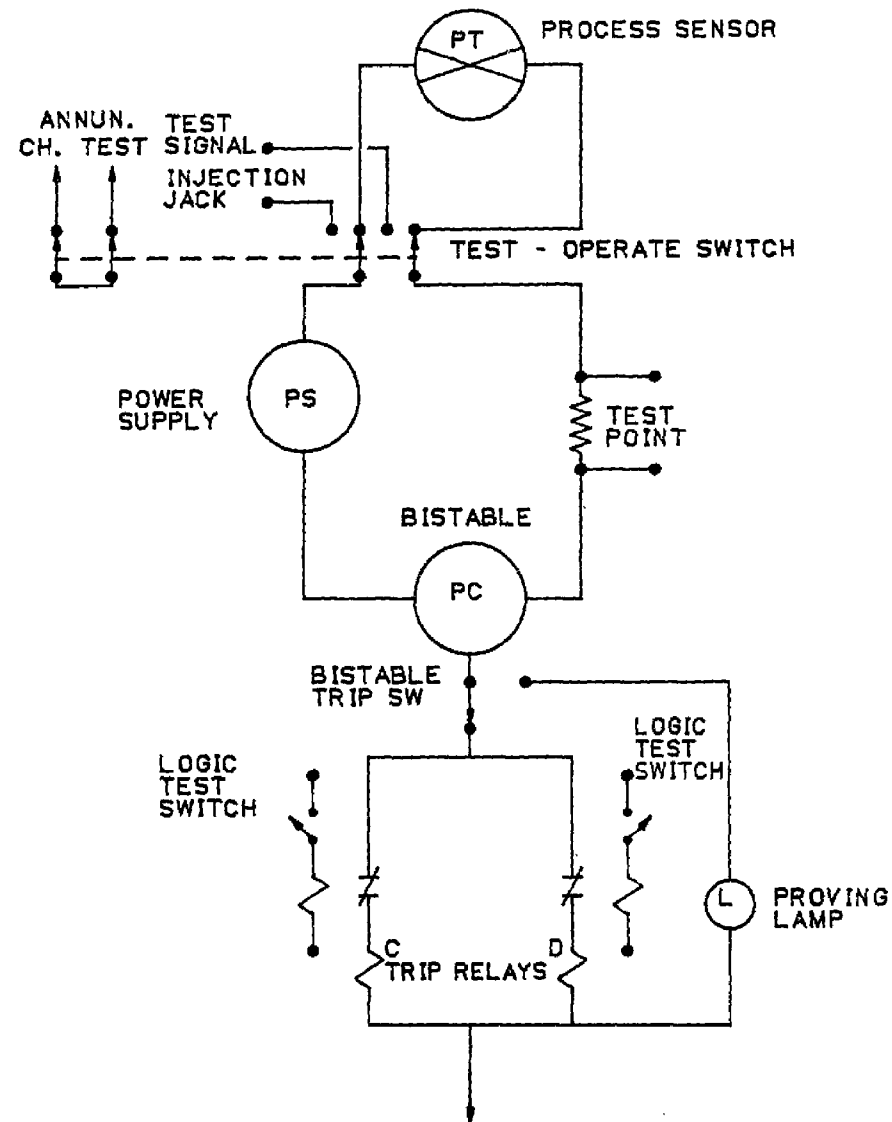
REVISIONS

1/5 0

THIS REV
IS NON-
CLASS
AS PER
CI-240-1
RELEASED
FOR INFO
ONLY
PN 32357
4-24-85

M.R.
05/29/01 01

THIS REVISION
IS NON-CLASS
PER THE QAPD.
UPDATED DWG.
TO INCLUDE
UFSAR FIG. NO.
IN TITLE
P/N 69901-AA
RELEASED
FOR RECORD
JH/T.D.
05/29/01

STRATUS
ENGINEERING

TYPICAL ANALOG CHANNEL TESTING ARRANGEMENT

01

MI

STATION- INDIAN POINT 2
(UFSAR FIGURE NO. 72-25)

DRAWN BY *REPRO* CHECKED
SCALE *NONE* J.O. 32357-00

APPROVALS

CHIEF DESIGN ENG. *[Signature]* 2/14/89
ENG. *[Signature]* 3/13/85
DE ENG. *[Signature]* 7/7/85

CONSOLIDATED EDISON CO. OF N.Y., INC.

DWG. NO. E 243322-01

RECORDED

REVISIONS

615	0
-----	---

THIS REV.
IS NON-
CLASS
AS PER
CI-240-1
RELEASED
FOR INFO
ONLY
PN 32357
4-24-85

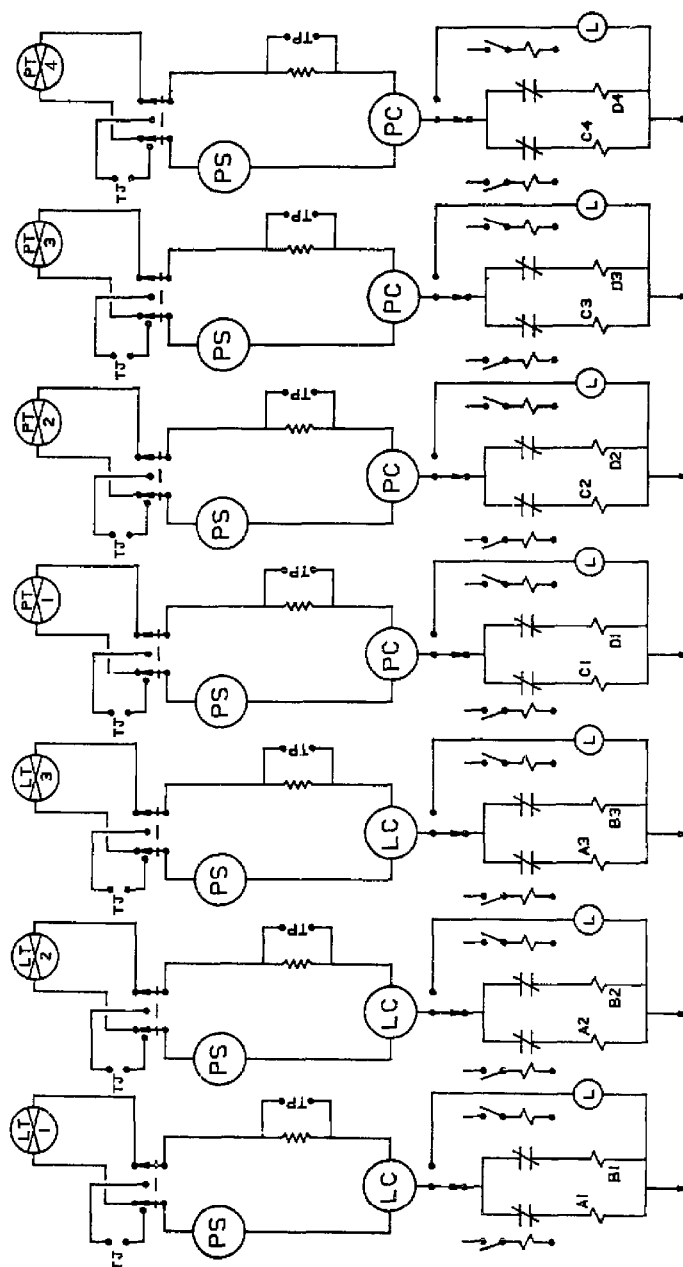
J.SCANIFFIO 11-24-98	01
-------------------------	----

THIS REVISION
IS NON CLASS
AS PER CI-240-1.
REVISED DWG.
PER CITRS
#98-E06025,
FILE 0-2010.
RELEASED FOR
INFORMATION.
P.N.69911-NP.
G.To.

V.I. 4/18/99	02
-----------------	----

THIS REVISION
IS NON-CLASS
PER CI-240-1
UPDATED DWG.
TO INCLUDE
UFSAR FIG. NO.
IN TITLE
P/N 69911-NP
RELEASED
FOR RECORD
DLA
4/18/99

STRATUS
ENGINEERING



TJ- TEST SIGNAL INSERTION JACK
TP - TEST POINT
NOTE - REDUNDANT CHANNELS
ARE ISOLATED
ANALOG CHANNELS

57952

92908 GEN ENG.

STATION- INDIAN POINT 2
UFSAR FIGURE NO. 7.2-27

DRAWN BY REPO	CHECKED
SCALE SCALE	J.O. 32357-00

APPROVALS

CHIEF
DESIGN
ENG.

ENG.
ENG.

CONSOLIDATED EDISON CO. OF N.Y., INC.

DWG. NO. E 243324-02

RECORDED

MI

REVISIONS

V.I.
4/18/99

02

THIS REVISION
IS NON-CLASS
PER CI-240-1
UPDATED DWG.
TO INCLUDE
UFSAR FIG. NO.
IN TITLE
P/N 69911-NP
RELEASED
FOR RECORD
DLA
4/18/99

STRATUS
ENGINEERING

AL - Alarm
Buf - Buffer
f - Special Function (such as a pressure compensation unit or lead/log compensation)
FC - Flow controller (off-on unless output signal is shown)
FI - Flow Indicator
FT - Flow Transmitter
Hi L - High Level
Hi LRT - High Level Reactor Trip
Hi PRT - High Pressure Reactor Trip
I/I - Isolation Current Repeater
ISOL - Isolation (other than I/I)
LC - Level Controller (off-on unless output signal is shown)
LI - Level Indicator
L-Low - Low Level
Lo L - Low Level
Lo Lo L - Low Low Level
Lo LRT - Low Level Reactor Trip
Lo Lo LRT - Low Low level Reactor Trip
Lo PRT - Low Pressure Reactor Trip
L_{ref} - Programmed Reference Level
LT - Level Transmitter
NC - Nuclear Flux Controller
NE - Nuclear Detector
NI - Nuclear Flux Indicator
NQ - Nuclear Power Supply
PC - Pressure controller (off-on unless output signal is shown)
PI - Pressure Indicator
P_{ref} - Programmed Reference Pressure
PS - Power Supply
PT - Pressure Transmitter
R/I - Resistance to Current Converter
S - Control channel transfer switch (used to maintain auto channel during test of the protection channel)
SI - Safety Injection
T - Built-in Test Point
TE - Temperature Element
TJ - Test Signal Insertion Jack
TP - Test Point
ΦU,L - Out of core upper or lower ion chamber flux signals

02

NI

STATION- INDIAN POINT 2

UFSAR FIGURE NO. 72-28

DRAWN BY REPRO CHECKED

SCALE NONE J.O. 32357-00

APPROVALS

CHIEF
DESIGN
ENG.

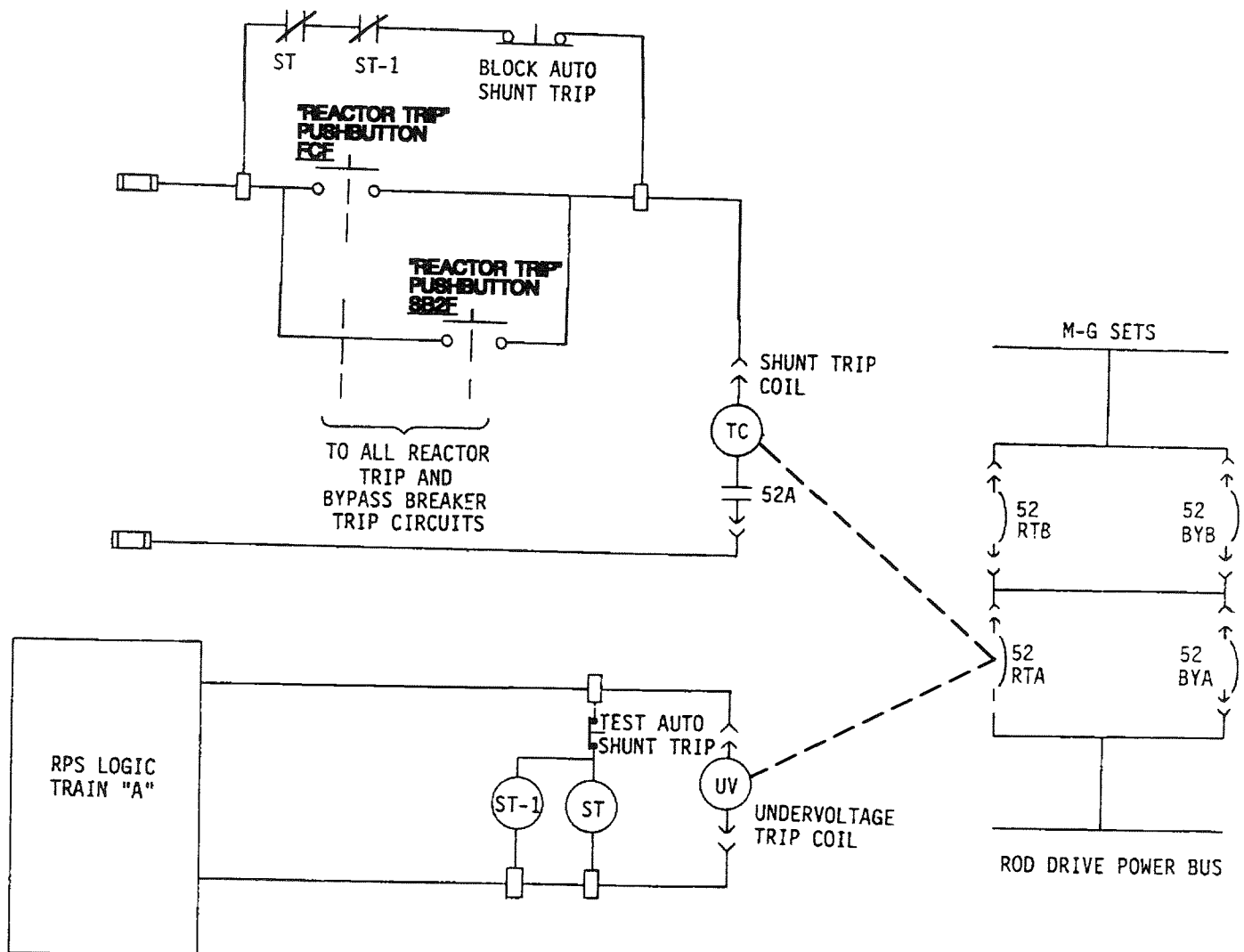
DESIGNED BY J. H. HOFFMAN 9/9/85

ENG. J. H. HOFFMAN

CONSOLIDATED EDISON CO. OF N.Y., INC.

DWG. NO. E 243311-02

RECORDED



INDIAN POINT UNIT No. 2

UFSAR FIGURE 7.2-30

REACTOR TRIP BREAKER
ACTUATION SCHEMATIC

MIC. No. 1999MC3874

REV. No. 17A

REVISIONS

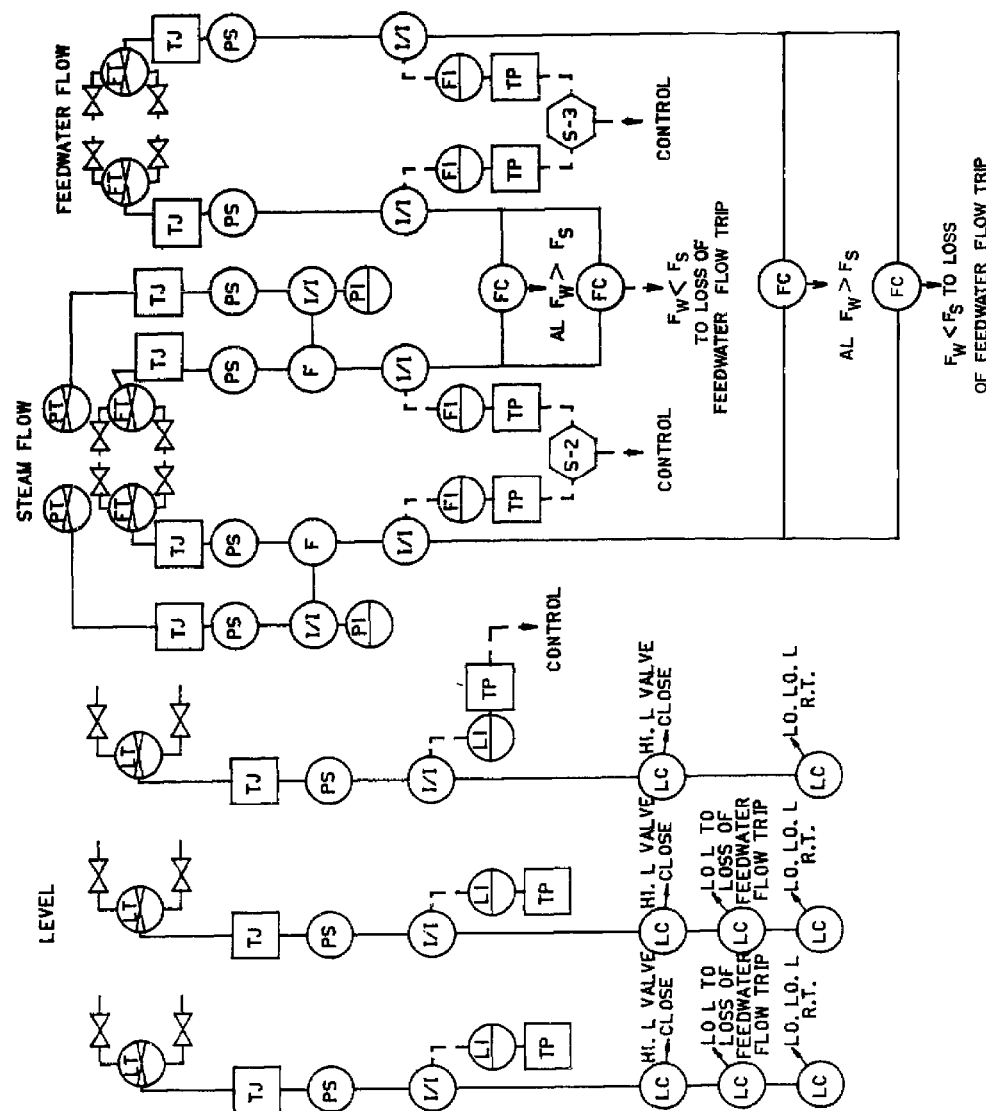
13	0
----	---

THIS REV.
IS NON-
CLASS
AS PER
CI-240-1
RELEASED
FOR INFO
ONLY
PN 32357
4-24-85

V.I. 4/18/99	01
-----------------	----

THIS REVISION
IS NON-CLASS
PER CI-240-1
UPDATED DWG.
TO INCLUDE
UFSAR FIG. NO.
IN TITLE
P/N 69911-NP
RELEASED
FOR RECORD
DLA
4/18/99

STRATUS
ENGINEERING



STATION- INDIAN POINT 2
UFSAR FIGURE NO. 72-32

DRAWN BY *REPRO* CHECKED
SCALE *NONE* J.O. 32357-00

APPROVALS

CHIEF
DESIGN
ENG.

DESIGNED BY *REPRO* 7/9/85

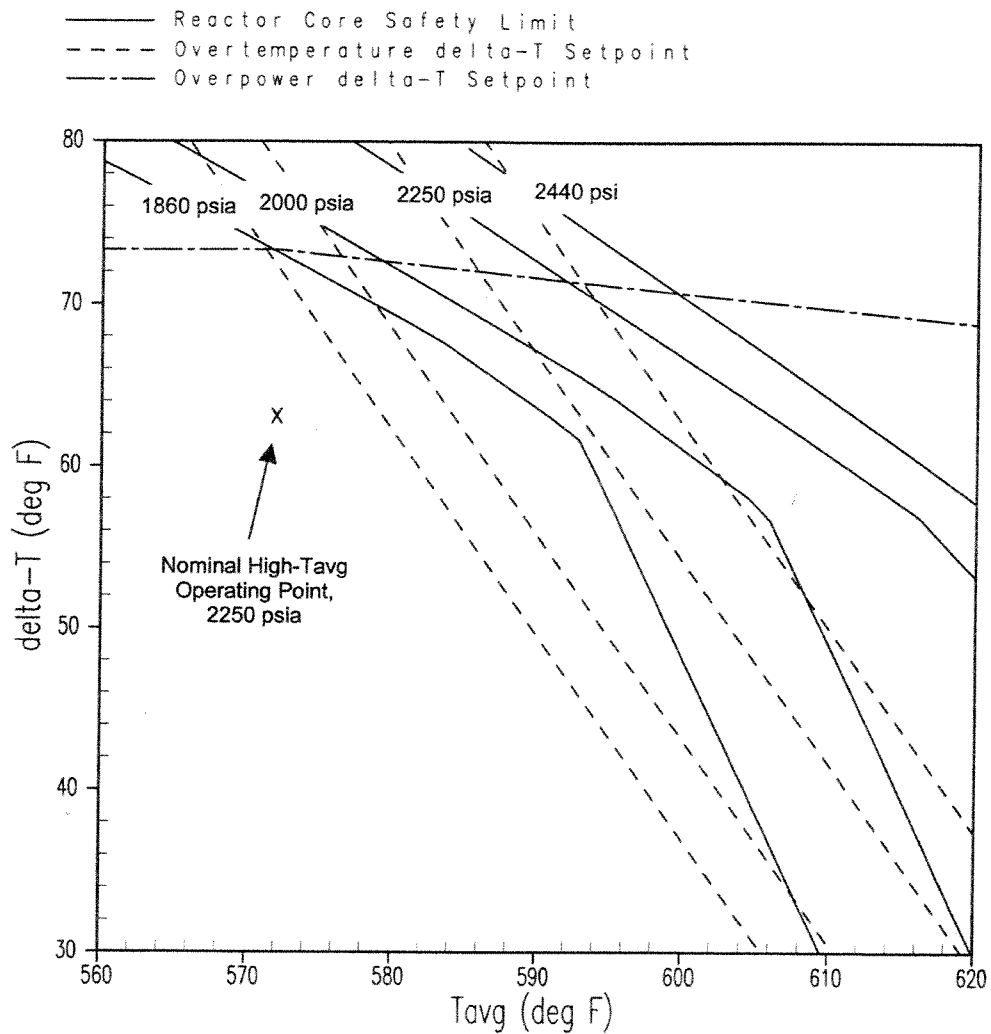
ENG. *REPRO* 7/9/85

CONSOLIDATED EDISON CO. OF N.Y., INC.

DWG. NO. E 243328-01

RECORDED

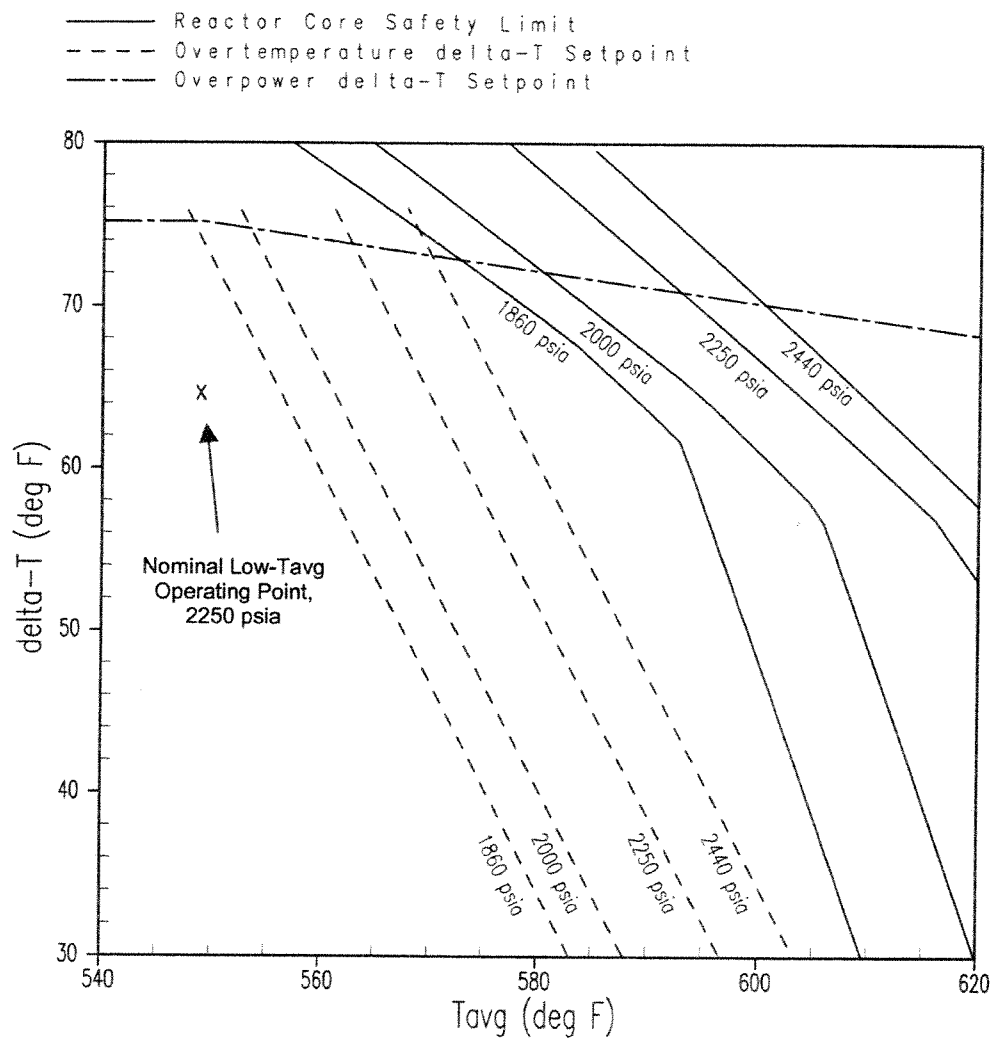
MI



INDIAN POINT UNIT No. 2

ILLUSTRATION OF OVERPOWER and
OVERTEMPERATURE ΔT TRIPS
HIGH TEMPERATURE OPERATION

UFSAR FIGURE 7.2-33,sht.1 REV. No. 19



INDIAN POINT UNIT No. 2

ILLUSTRATION OF OVERPOWER and
OVERTEMPERATURE ΔT TRIPS
LOW TEMPERATURE OPERATION

UFSAR FIGURE 7.2-33, sht. 2 REV. No. 19

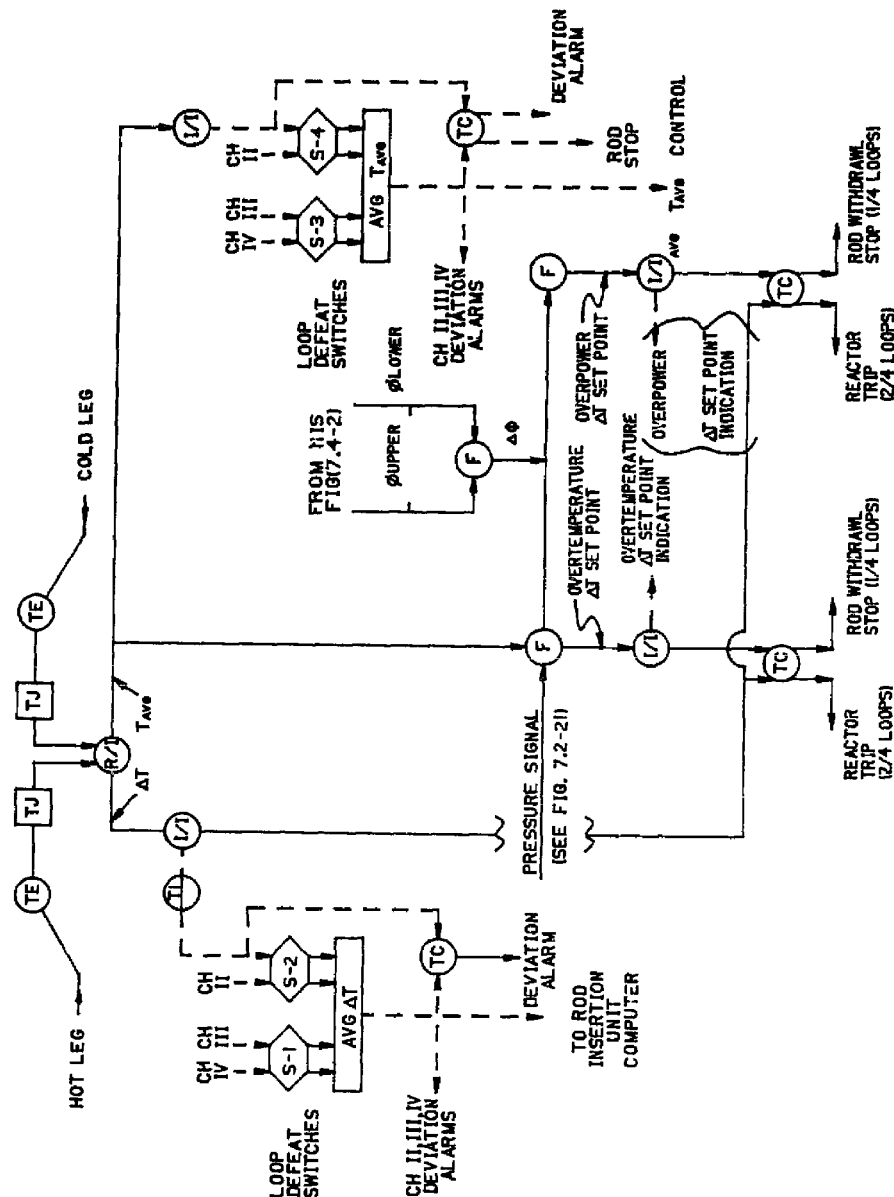
REVISIONS

	2	0
--	---	---

THIS REV.
IS NON-
CLASS.
AS PER
CI-240-1
RELEASED
FOR INFO
ONLY
PN 32357
4-24-85

V.l.	
4/18/99	

THIS REVISION
IS NON-CLASS
PER CI-240-1
UPDATED DWG
TO INCLUDE
UFSAR FIG. NO.
IN TITLE
P/N 69911-NP
RELEASED
FOR RECORD
DLA
4/18/99

STRATUS
ENGINEERING

T_{AVG}/ΔT CONTROL AND PROTECTION SYSTEM
(SINGLE CHANNEL)

STATION- INDIAN POINT 2

UFSAR FIGURE NO. 7.2-34

DRAWN BY *icp/ku* CHECKED

SCALE NONE J. O. 32357-00

APPROVALS

CHIEF DESIGN ENG.	<i>[Signature]</i> 2/14/84
DE ENG.	<i>[Signature]</i> 9/9/84
ENG.	<i>[Signature]</i> 9/10/84

CONSOLIDATED EDISON CO. OF N.Y., INC.

DWG. NO. E 243330-01

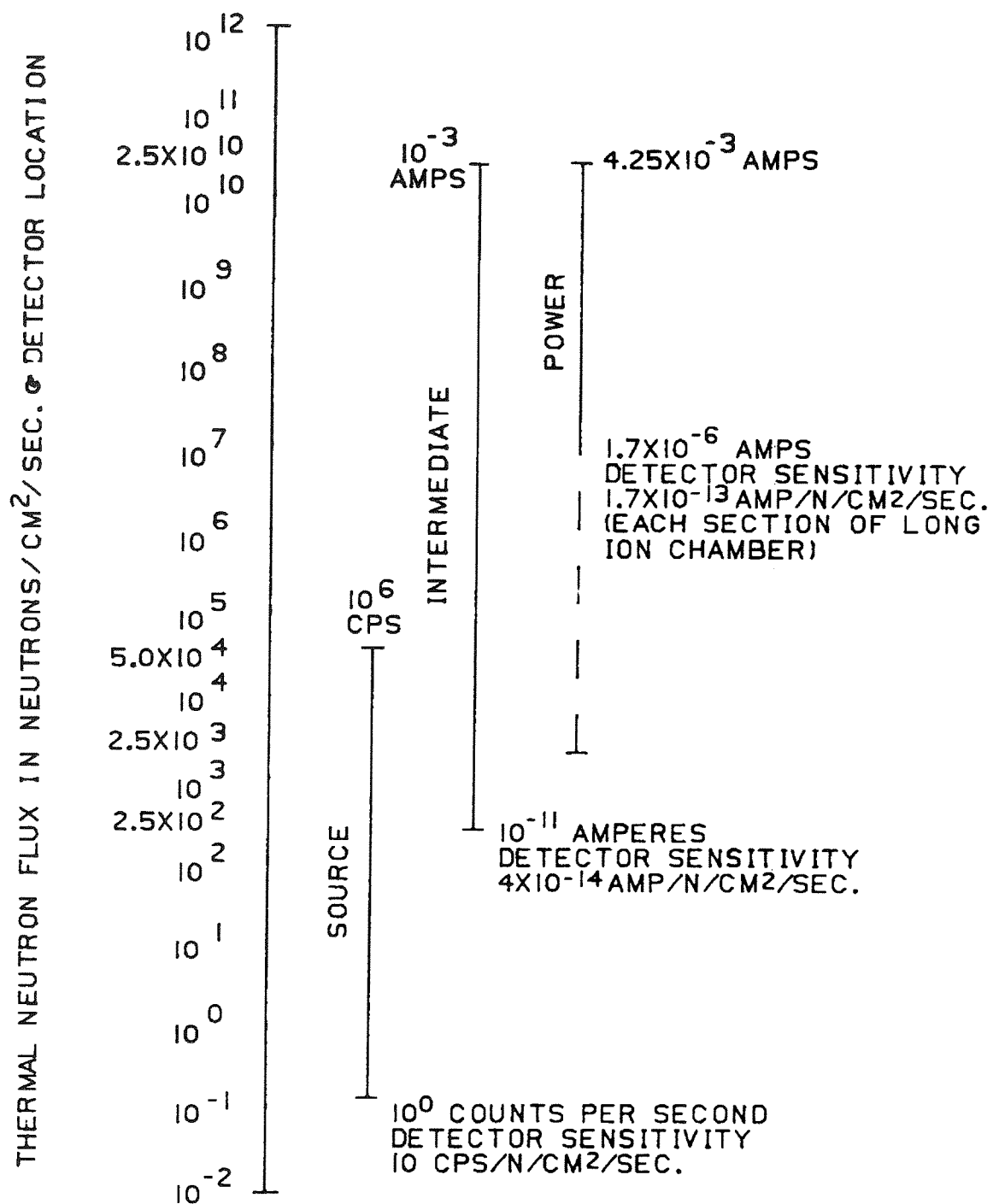
RECORDED

57952

92906 GEN ENG.

1. TEMPERATURES ARE MEASURED AT STEAM GENERATOR'S INLET AND OUTLET.
2. PRESSURE IS MEASURED AT THE PRESSURIZER.





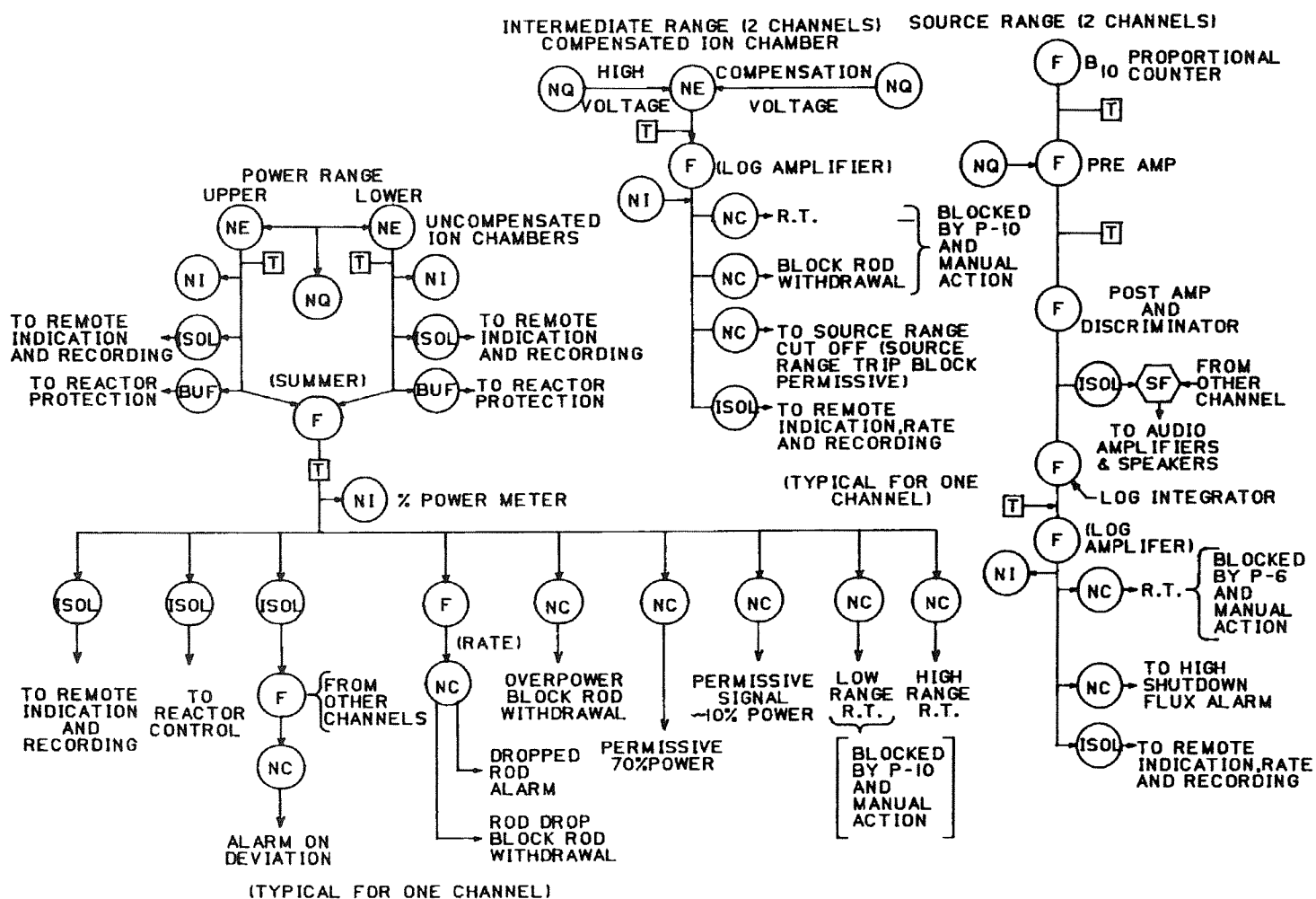
INDIAN POINT UNIT No. 2

UFSAR FIGURE 7.4-1

NEUTRON DETECTORS AND
RANGE OF OPERATION

MIC. No. 1999MC3877

REV. No. 17A



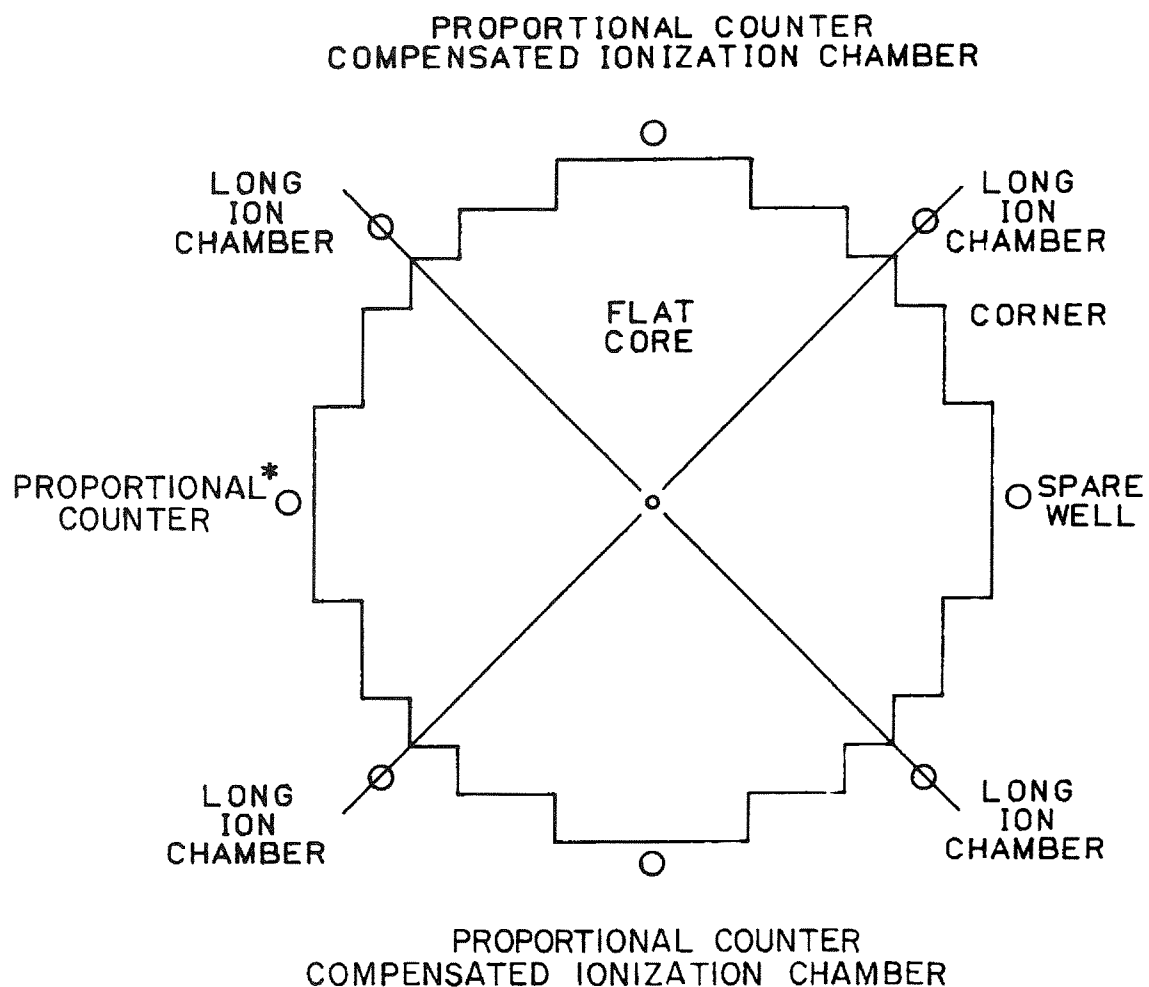
INDIAN POINT UNIT No. 2

UFSAR FIGURE 7.4-2

NUCLEAR INSTRUMENTATION
SYSTEM

MIC. No. 1999MC3878

REV. No. 17A



* PART OF THE ALTERNATE SAFE-SHUTDOWN
SYSTEM INSTRUMENTATION.

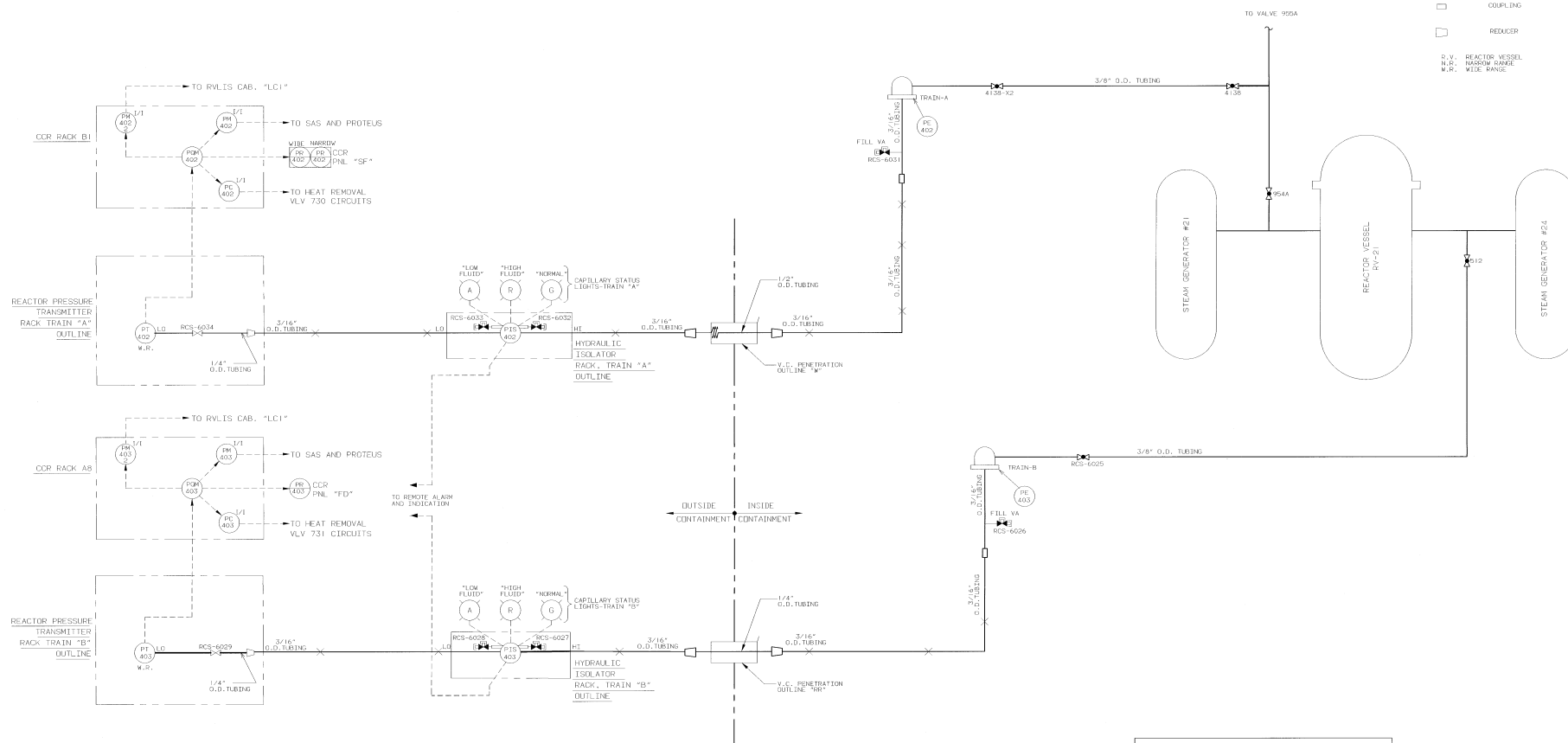
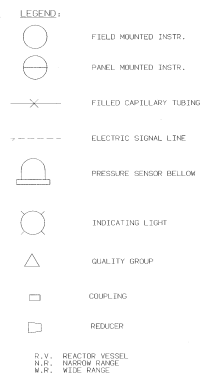
INDIAN POINT UNIT No. 2

UFSAR FIGURE 7.4-3

PLAN VIEW INDICATING DETECTOR
LOCATION RELATIVE TO CORE

MIC. No. 1999MC3879

REV. No. 17A



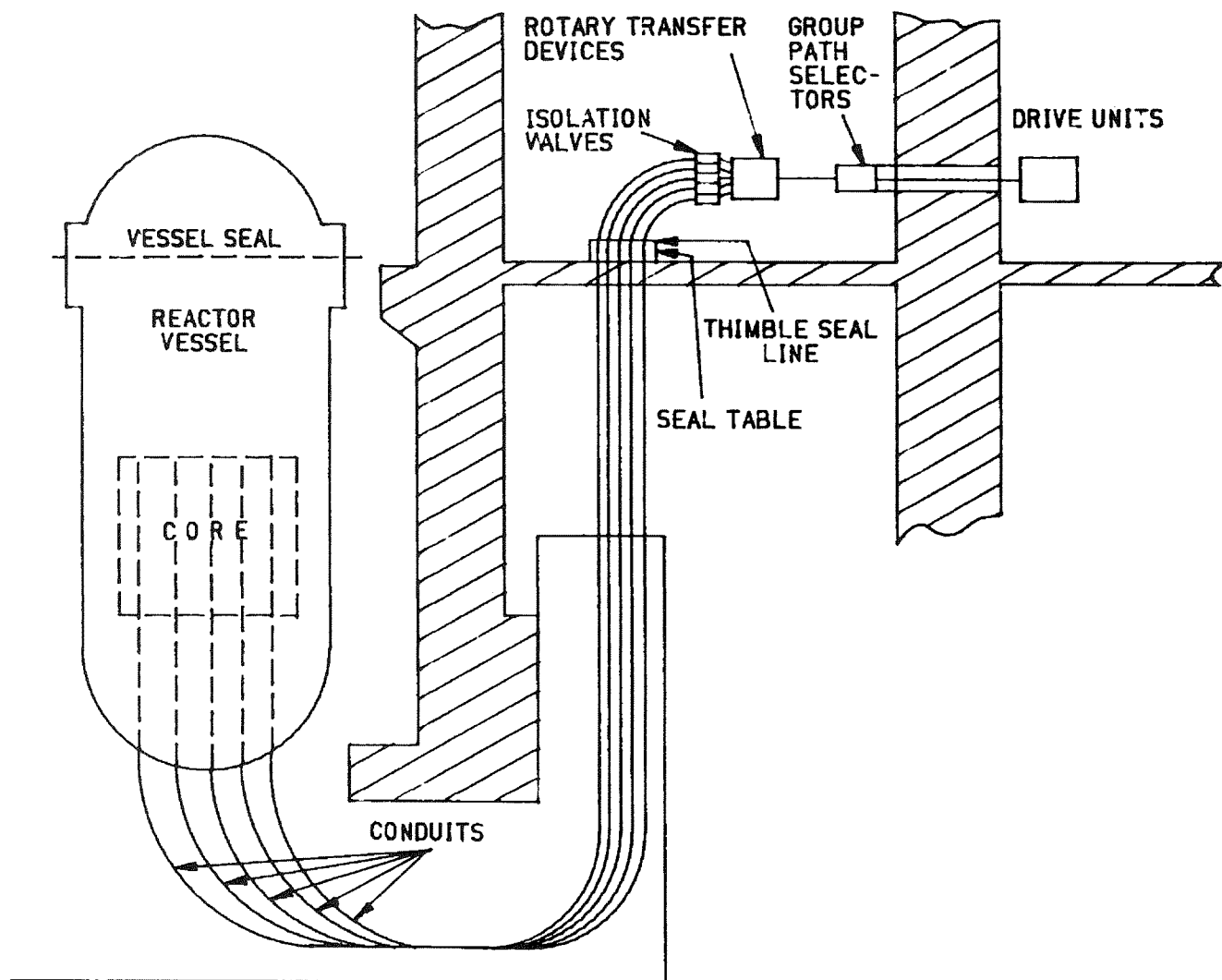
INDIAN POINT UNIT No. 2

UFSAR FIGURE 7.5-1

REACTOR COOLANT WIDE RANGE PRESSURE
INSTRUMENT SYSTEM - FLOW DIAGRAM

MIC. No. 1999MC3543 REV. No. 17A

VALVE POSITIONS ARE NOT CONTROLLED BY THIS FIGURE



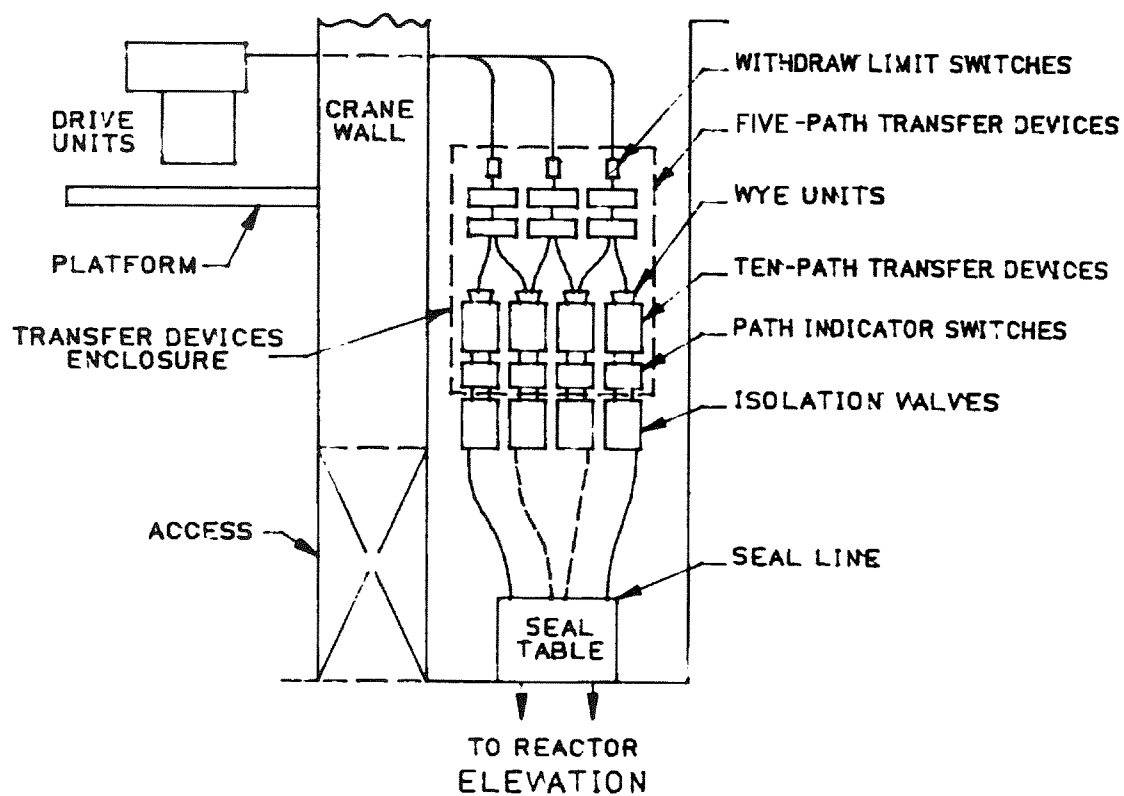
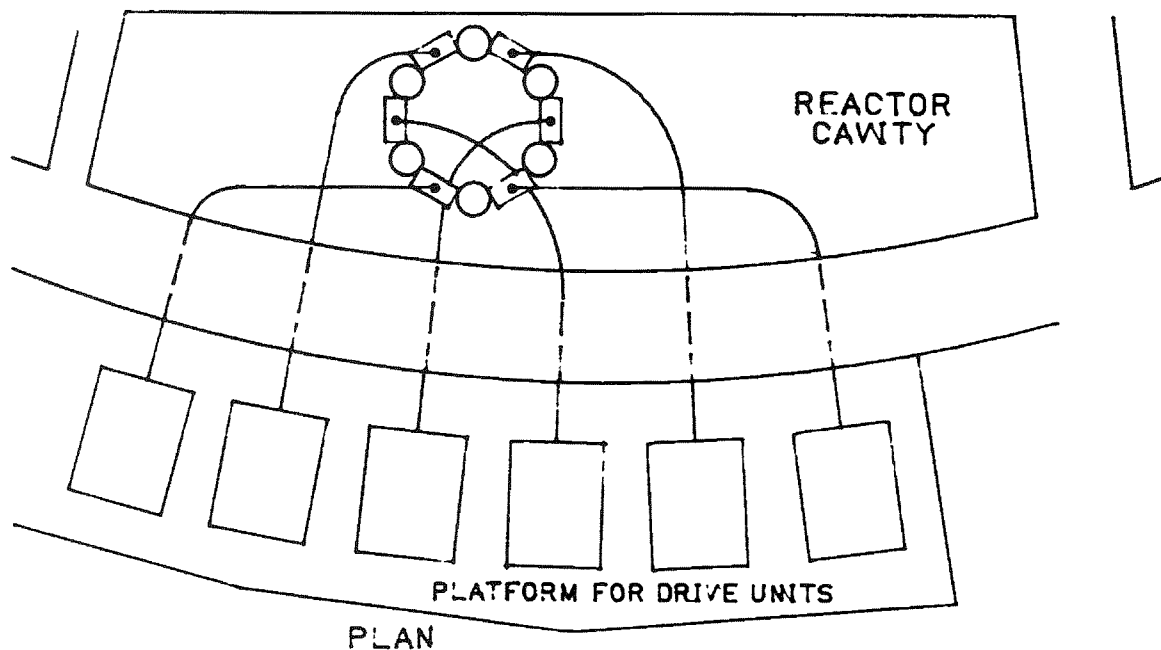
INDIAN POINT UNIT No. 2

UFSAR FIGURE 7.6-1

TYPICAL ARRANGEMENT OF MOVABLE
MINIATURE NEUTRON FLUX DETECTOR
SYSTEM

MIC. No. 1999MC3880

REV. No. 17A



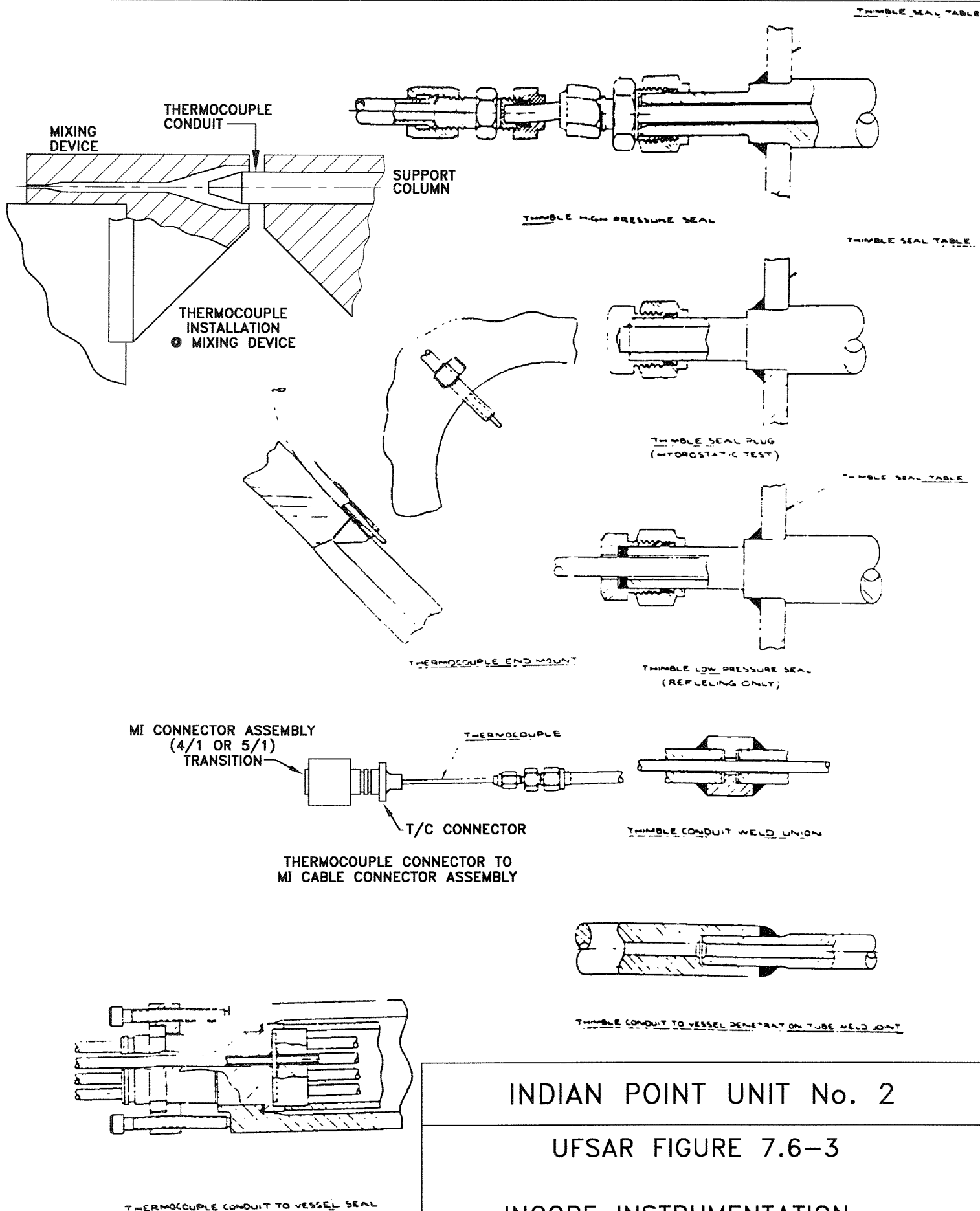
INDIAN POINT UNIT No. 2

UFSAR FIGURE 7.6-2

ARRANGEMENT OF INCORE
FLUX DETECTOR

MIC. No. 1999MC3881

REV. No. 17A



INDIAN POINT UNIT No. 2

UFSAR FIGURE 7.6-3

INCORE INSTRUMENTATION -
DETAILS

MIC. No. 1999MC3882

REV. No. 17A