

9321-F-2735

INSIDE CONTAINMENT BUILDING
FOR CONT SEE DWG A235296

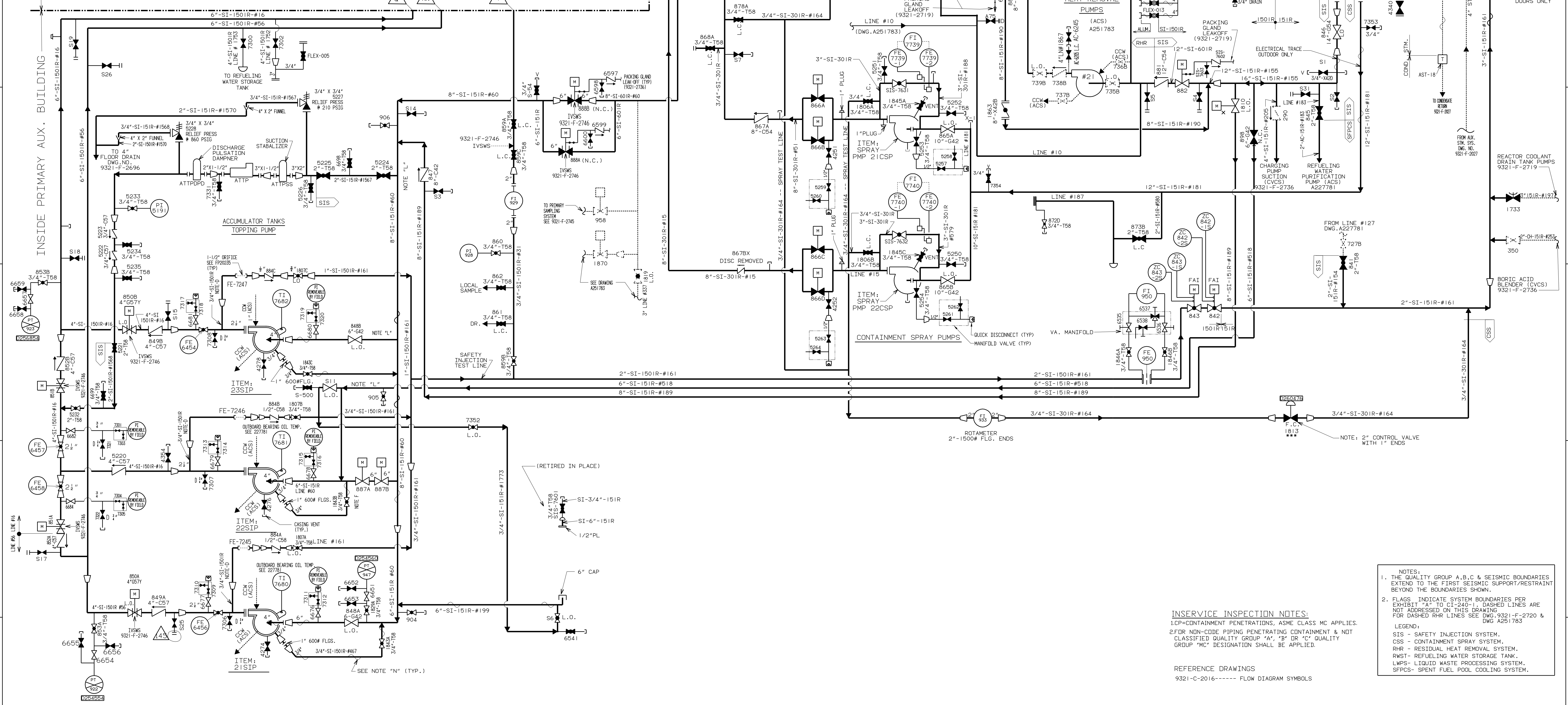
REFERENCE DRAWINGS:
RCS- REACTOR COOLANT SYSTEM
CVSC- CHEMICAL AND VOLUME CONTROL SYSTEM
ACS- AUXILIARY COOLANT SYSTEM
SS- SAMPLING SYSTEM
WDS- WASTE DISPOSAL SYSTEM

U.E. & C. NO.
-----9321-F-2738
SHEET #1. -----9321-F-2736
SHEET #2. -----9321-F-2737
SHEET #3. -----9321-F-2737
-----9321-F-2720
-----9321-F-2745

REFERENCES:
1. PROCESS FLOW DIAGRAM DWG.541-F-154
2. DEFINITION OF SYMBOLS
E. SPEC. G675164 REV. 0
3. INSTALLATION OF INSTRUMENTATION
PROC. SPEC. CAP.-294367 REV.1
4. MATERIAL SPEC. PIPE AND FITTINGS
E. SPEC. G659866 REV. 2 AND
E. SPEC. G676398 REV. 0

NOTES:

- A. PIPING IS SCHEDULE 140
B. LOCATE IN HIGH SIDE OF PIPE IN LOCAL HIGH POINT.
D. DRIFTEE IS SUPPLIED WITH PUMP PACKAGE.
E. MOUNT WITH STEM VERTICAL
F. BALANCE PISTON FLOW LINE FOR S.I. PUMP #22
MUST BE INSIDE VALVES 887A & B.
G. LOCAL NITROGEN BOTTLE STATION - SEE DWG. 9321-F-2723.
H. LOCATE AT LOW POINT OF PIPE WORK.
J. INSTALL VALVES FOR VERTICAL DISCHARGE.
K. FLUSH LINE TO BE INSTALLED AS CLOSE TO VALVE INLET
AS POSSIBLE
L. HEAT TREATING TO CONTINUE APPROXIMATELY
ONE FOOT PAST THE JUNCTURE.
M. *** INDICATES CONTROL VALVE HAS
ADDITIONAL ASSOCIATED CONTROL
EQUIPMENT & IS REPRESENTED ON
CONTROL VALVE HOOD-UP DETAIL
DWG. 9321-F-7056.
N. ALL BORIC ACID HEAT TRACE CIRCUITS HAVE BEEN
DISCONNECTED. RWST FREEZE PROTECTION CIRCUITS
REMAIN ENERGIZED.
O. THE QUALITY GROUP A,B,C AND SEISMIC BOUNDARIES
EXTEND TO THE FIRST SEISMIC SUPPORT/RESTRAINT
BEYOND THE BOUNDARIES SHOWN.




SAFETY INJECTION PUMPS

INSERVICE INSPECTION NOTES:
1. CP=CONTAINMENT PENETRATIONS, ASME CLASS MC APPLIES.
2. FOR NON-CODE PIPING PENETRATING CONTAINMENT & NOT
CLASSIFIED QUALITY GROUP "A", "B" OR "C" QUALITY
GROUP "MC" DESIGNATION SHALL BE APPLIED.

REFERENCE DRAWINGS
9321-C-2016----- FLOW DIAGRAM SYMBOLS

WORK THIS DWG. WITH A235296

THIS DWG. TO BE REVISED ONLY IN AUTOCAD.										THIS REVISION IS NON-CLASS PER THE QAPD. DRAWING UPDATED IN RESPONSE TO CR-IP2-2004-00396 RELEASE FOR RECORD										TITLE: FLOW DIAGRAM SAFETY INJECTION SYSTEM - USFAR FIGURE No. 6.2-1 (SHT. 1)										 STATION INDIAN POINT									
145		INCORPORATED EC-64317				06/28/16		AI		APPROVAL SIGNATURES ON FILE		DES T. CZEEMKE 02/11/04		PN 69901-AF RL/TC		2/12/88		F.A.A. A.G.		W.J. KING 2/12/88								DOWN BY B. JOHN		SCALE NONE		REC'D		DEC. NO. 9321-F-2735-145		MY			
REV		DESCRIPTION				DATE		BY		CHK'D		APP.				DATE		CHK.		SUPV.		DESIGN MGR.		CHIEF DESIGN ENG.		DISC. ENG.		ENG. MGR.											
		REVISIONS														REVIEW						APPROVALS																	

PLAN SCALE 1/8" = 1'-0"

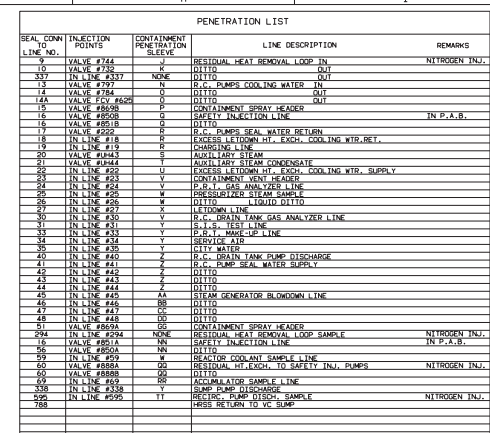
ELEVATION A-A SCALE 1/8" = 1'-0"

ELEVATION AA-AA SCALE 1/8" = 1'-0"

NOTE: THIS REVISION IS CLASS "A" AS PER THE Q.A.P.D. PARTIAL TRANSFERRED DIMENSIONS 4022-44 REV 1 AND DIMENSIONS 4022-44 REV 1 MOD. F.W. 95-1242-M RELEASE AS-BUILT. P.N. 1242-95

WESTINGHOUSE ELECTRIC CORPORATION
CONTAINMENT BUILDING
AIR RECR. FAN - COOLER - FILTER UNIT
PLAN AND SECTION -
UPPER FIGURE NO. 6.4.3

FOR INDIAN POINT GENERATING STATION
UNIT NO. 2
A-201030




1. PROCESS FLOW DIAGRAM----- (M)
2. DEFINITIONS OF SYMBOLS ----- (M) SPEC. G.675176 REV. D.
3. INSTRUMENT & CONTROL STD ----- (M) (M) SYMBOLS & APPLICATIONS FOR INST.
DIAGRAMS SECTION - 1.1, ISSUED AUG.12
1966.
(M) INST. INSTALLATION; SECT.3.0 ISSUE
4. MATERIAL SPEC & FITTINGS ----- (M) SPEC. G.569866 REV.2
(M) SPEC. G.676398 REV. 0

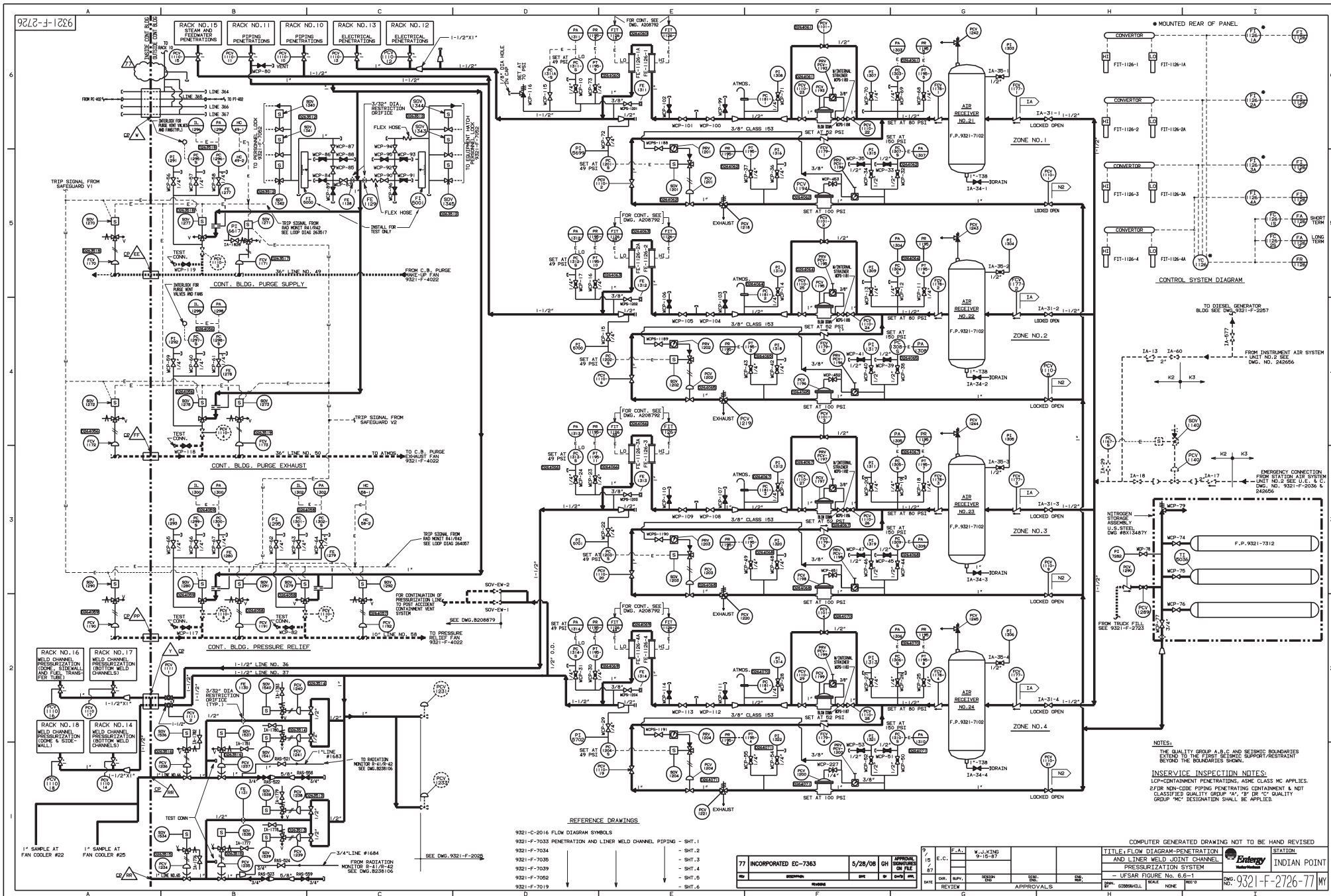
9321-F-2736	REACTOR COOLANT SYSTEM
9321-F-2736	CHEMICAL VOLUME CONTROL SH. 1
9321-F-2737	CHEMICAL VOLUME CONTROL SH. 2
9321-F-2719	CHEMICAL VOLUME CONTROL SH. 3
9321-F-2730	WASTE DISPOSAL SYSTEM SH. 1
9321-F-2730	WASTE DISPOSAL SYSTEM SH. 2
9321-F-2735	SAFETY INJECTION
9321-F-2745	SAMPLE SYSTEM
9321-F-2729	STEAM GEN. BLOWDOWN SYSTEM
9321-F-2720	AUXILIARY COOLANT
9321-F-2724	PRIMARY WATER MAKE-UP SYSTEM
9321-F-2768	ISOLATION SEAL WATER PIPING ARRG.
9321-F-2769	ISOLATION SEAL WATER PIPING ARRG.
9321-F-2016	FLOW DIAGRAM
9321-F-2776	TEST INJECTION LINE TEST CONNECTIONS

1. ALL PIPING TO BE 3/8" S.S. O.D. TUBING (LINE DESIGNATION 7" 1" C/W) EXCEPT AS NOTED.
2. ALL GLOBE VALVES INSTALLED WITH FLOW UNDER SEAT. EXCEPT NO.
3. ALL GLOBE VALVES ARE TYPE 3/8" FOR EXCEPT NO. 1434-1448 (NITROGEN-RESISTANT) AND TYPE 3/8" FOR EXCEPT NO. 1454-1464 AND 1533 TO 1537.
4. ALL CHECK VALVES ARE TYPE 3/8" FOR EXCEPT NO. 1434-1448 AND 1533 TO 1537. 1538 AND TYPE 3/8" FOR EXCEPT NO. 1538 AND 1539.
5. ALL GLOBE & CHECK VALVES ARE WELDED OR EQUIPPED WITH SNAKELOK FITTINGS.
6. ALL PIPING PREPARED FOR NATURAL FLOW UNLESS OTHERWISE SPECIFIED.
7. ADDITIONAL VENTS AND DRAINS MAY BE REQUIRED.
8. ALL INSULATION, SEA WATER LINES AND ALL CONTAINMENT ISOLATION POINTS BY THE LINE NUMBERS INDICATED.
9. ALL 1434-1448 AND 150V-1519 ARE OPENED AUTOMATICALLY BY A PHASE "A" CONTAINMENT ISOLATION SIGNAL.
10. FLANGES AND GASKET DISC.
11. THE QUALITY GROUP A,B,C AND SEISMIC BOUNDARIES EXTEND TO THE FIRST SEISMIC SUPPORT/RESTRAINT BEYOND THE BOUNDARIES SHOWN.

1. CP=CONTAINMENT PENETRATIONS, ASME CLASS MC APPLIES.
2. FOR NON-CODE PIPING PENETRATING CONTAINMENT & NOT
CLASSIFIED QUALITY GROUP "A", "B" OR "C" QUALITY
GROUP "MC" DESIGNATION SHALL BE APPLIED.

PN-----PRIMARY WATER
FC-----FAIL CLOSE
N.C.-----NORMALLY CLOSED
LO-----LOCKED OPEN


TITLE: FLOW DIAGRAM					STATION	
ISOLATION VALVE SEAL					INDIAN POINT	
WATER SYSTEM						
- UFSAR FIGURE No. 6.5-1						
DRAWN BY GIBBSHILL		SCALE NONE	REC'D	DWG. NO. 9321-F-2746		MY



NOTES:
THE QUALITY GROUP A,B,C AND SEISMIC BOUNDARIES
EXTEND TO THE FIRST SEISMIC SUPPORT/RESTRAINT
BEYOND THE BOUNDARIES SHOWN.

INSERVICE INSPECTION NOTES:
LCP=CONTAINMENT PENETRATIONS, ASME CLASS MC APPLICABLE
2FD NON-CODE PIPING PENETRATING CONTAINMENT & NOT
CLASSIFIED QUALITY GROUP 'A', 'B' OR 'C' QUALITY
GROUP 'MC' DESIGNATION SHALL BE APPLIED.

COMPUTER GENERATED DRAWING NOT TO BE HAND REVISED

TITLE: FLOW DIAGRAM-PENETRATION AND LINER WELD JOINT CHANNEL PRESSURIZATION SYSTEM		 Entergy Nuclear Vermont	STATION INDIAN POINT

ON	 Entergy Nuclear-Wind	STATION
EL		INDIAN POINT

PMG-0721 F 2726 77

No. 9521-F-2126-11	MI
--------------------	----



